

Carbon dioxide contrast medium for endovascular treatment of ilio-femoral occlusive disease

Cynthia de Almeida Mendes^{1,II,*} Alexandre de Arruda Martins,^{1,III} Marcelo Passos Teivelis,^I Sergio Kuzniec,^I Andrea Yasbek Monteiro Varella,^I Alexandre Fioranelli,^I Nelson Wolosker^{I,III}

^IHospital Israelita Albert Einstein, Cirurgia Vascular, São Paulo/SP, Brazil. ^{II}Hospital Municipal Dr Moyses Deutsch, Serviço de Cirurgia, São Paulo/SP, Brazil.

^{III}Hospital das Clinicas da Faculdade de Medicina da Universidade de São Paulo, Serviço de Cirurgia Vascular, São Paulo/SP, Brazil.

OBJECTIVES: Compare the use of carbon dioxide contrast medium with iodine contrast medium for the endovascular treatment of ilio-femoral occlusive disease in patients without contraindications to iodine.

MATERIALS AND METHODS: From August 2012 to August 2014, 21 consecutive patients with ilio-femoral occlusive disease who were eligible for endovascular treatment and lacked contraindications to either iodine contrast or carbon dioxide were randomized into the carbon dioxide or iodine groups and subjected to ilio-femoral angioplasty.

We analyzed the feasibility of the procedures, the surgical and clinical outcomes, the procedure lengths, the endovascular material costs, the contrast costs and the quality of the angiographic images in each group.

RESULTS: No conversions to open surgery and no contrast media related complications were noted in either group. A post-operative femoral pulse was present in 88.9% of the iodine group and 80% of the carbon dioxide group. No differences in procedure length, endovascular material cost or renal function variation were noted between the groups. Four patients in the carbon dioxide group required iodine supplementation to complete the procedure. Contrast media expenses were reduced in the carbon dioxide group. Regarding angiographic image quality, 82% of the carbon dioxide images were graded as either good or fair by observers.

CONCLUSIONS: The use of carbon dioxide contrast medium is a good option for ilio-femoral angioplasty in patients without contraindications to iodine and is not characterized by differences in endovascular material costs, procedure duration and surgical outcomes. In addition, carbon dioxide has lower contrast expenses compared with iodine.

KEYWORDS: Contrast Media; Carbon Dioxide; Iliac; Endovascular.

Mendes CA, Martins AA, Teivelis MP, Kuzniec S, Varella AY, Fioranelli A, et al. Carbon dioxide contrast medium for endovascular treatment of ilio-femoral occlusive disease. *Clinics*. 2015;70(10):675-679

Received for publication on February 24, 2015; First review completed on May 18, 2015; Accepted for publication on July 14, 2015

E-mail: cynthiamendes35@hotmail.com

*Corresponding author

INTRODUCTION

Arteriosclerotic occlusive disease of the ilio-femoral arteries is a common cause of ischemic symptoms in the lower limbs. Revascularization is the treatment of choice for patients when either limiting intermittent claudication unresponsive to clinical treatment or critical limb ischemia is present (1-4).

Iodine contrast medium (ICM) is considered the gold standard for endovascular treatments worldwide. An alternative that has been used within the last 15 years is carbon dioxide (CO₂), which is used for patients with renal

impairment or hypersensitivity to iodine because it is non-nephrotoxic and non-allergenic (5). With improvements in both imaging equipment and injection techniques, CO₂ has even been used in patients without contraindications to ICM for the detection of endoleaks (6), femoral-popliteal angioplasty (7,8), cavography for vena cava filter placement (9) and investigation of the biliary tree (10).

To date, no randomized prospective studies have compared the outcomes of CO₂ contrast media and ICM use for endovascular revascularization of the ilio-femoral segment in patients with no contraindications to ICM. Therefore, to determine whether CO₂ is as effective as iodine contrast media for ilio-femoral angioplasties, we performed a randomized prospective study involving patients with ilio-femoral occlusive disease who were eligible for either type of contrast (ICM or CO₂). We analyzed the feasibility of the procedures, the surgical and clinical outcomes, the procedure lengths, the endovascular material costs, the contrast costs and the quality of the angiographic images.

Copyright © 2015 CLINICS – This is an Open Access article distributed under the terms of the Creative Commons License (<http://creativecommons.org/licenses/by/4.0/>) which permits unrestricted use, distribution, and reproduction in any medium or format, provided the original work is properly cited.

No potential conflict of interest was reported.

DOI: 10.6061/clinics/2015(10)03



■ MATERIAL AND METHODS

From August 2012 to August 2014, 21 consecutive patients with ilio-femoral disease (all with atherosclerotic disease) with arterial lesions classified as Trans-Atlantic Inter-Society Consensus Document on Management of Peripheral Arterial Disease (TASC) A, B, C or D (identified via preoperative angiogram) and adequate runoff underwent endovascular ilio-femoral revascularization in a prospective randomized controlled study. This study was approved by the Ethics Committee for Analysis of Research Projects on Human Experimentation of our institution (Clinical Trials Identifier: NCT01861327). None of these patients exhibited severe chronic obstructive pulmonary disease, kidney failure, heart failure, or pregnancy.

The patients were randomized into the following two groups: a CO₂ group and an ICM group, according to the contrast medium selected for the procedure. All patients provided informed consent and agreed to the use of either contrast medium. Randomization was performed using a computer-generated list immediately prior to the beginning of the surgery. Eighteen of the 21 patients had no palpable femoral pulses in the limb that was revascularized. Two patients in the CO₂ group and one patient in the ICM group had weak palpable femoral pulses pre-operatively. Table 1 presents the demographic, clinical and laboratory profiles of the patients in our study sample who were subjected to either ICM or CO₂.

All procedures were performed in an endovascular suite operating room utilizing a Philips Allura Xper FD system (Philips Healthcare, Best, the Netherlands) under general anesthesia with cardiac monitoring, invasive arterial pressure monitoring and bladder catheterization.

The patients underwent ilio-femoral angioplasties by the same surgical team (four surgeons) using the same surgical technique throughout the study in the same hospital (Hospital Israelita Albert Einstein, São Paulo, Brazil). An ipsilateral puncture of the common femoral artery was used for access in 19 of the 21 patients. In one case, an ipsilateral puncture was unsuccessful; therefore, we opted for contralateral femoral access. In another case, a contralateral puncture was the initial choice due to the presence of an atherosclerotic lesion in the external iliac artery.

Standard surgical technique was used in all cases. After an ultrasound guided arterial puncture and the insertion of a

6-French introducer access sheath, systemic heparinization was performed followed by initial angiography with the appropriate contrast medium. The lesion was crossed using catheters and hydrophilic guide wires followed by the selective delivery of a self-expanding stenting and pre- and post-dilatation with an angioplasty balloon. At the end of the procedure, the heparinization was reversed, and local manual compression was performed for 30 minutes after removal of the introducer. All of the endovascular materials were provided by Cook Medical, Inc.[®].

The CO₂ injection was performed manually without a specific pump system. A cylinder with medicinal CO₂, a particle filter (Millex[®] Durapore[®] hydrophilic 0.22 µm pore) and a three-way stopcock were used for CO₂ aspiration, and the entire procedure was performed inside a bowl with saline solution. After capturing the required volume of CO₂, an additional 3 to 5 ml of saline solution was aspirated into the syringe to provide a water seal as the tip was held down. This process allowed for the creation of a physical barrier between the room air and the carbon dioxide, which was independent of the manual compression and safe from air contamination (11). Twenty-milliliter syringes were used for the CO₂ intra-arterial contrast injection, which was performed using either a femoral introducer or a catheter.

The injection of ICM was performed manually using 10-ml syringes with 3 ml of iodinated contrast media and 7 ml of saline solution per injection. The ICM used in all cases was Omnipaque 300 (Iohexol), a nonionic low osmolar contrast agent routinely used by our service.

Immediately after the operation, all patients were referred to the intensive care unit for at least 24 hours in accordance with our institutional research protocol for vascular surgery and received intravenous fluids following a fixed protocol for renal protection, regardless of the contrast medium used. The protocol for renal protection included intravenous fluids pre-procedure with endovenous acetylcysteine and intravenous fluid maintenance for 24 hours. Thereafter, the patient remained hospitalized for the time needed, with daily renal function, blood count and electrolyte monitoring for at least 72 hours.

The endovascular material used in each intervention and the volumes of ICM or CO₂ were precisely recorded for further analysis.

The endovascular material costs included puncture needles, sheaths, angioplasty balloons, catheters, insufflating syringes and stents used during the endovascular procedure. The contrast costs included the total cost of the contrast used during the procedure. It is important to emphasize that because ICM is required for balloon filling during angioplasties, we included the price of one 20-ml flask of ICM for each patient in the CO₂ group (irrespective of ICM supplementation).

Procedure length was measured based on the amount of time elapsed from the arterial puncture until the end of manual compression.

We analyzed creatinine clearance levels between the groups during the pre- and post-operative periods as well as creatinine clearance variations between the post- and pre-operative periods (delta clearance).

All procedures were recorded on DVD and the recorded angiography procedures (of both groups) were analyzed by two observers who did not participate in the intervention and had no experience with the use of CO₂ contrast. The observers assigned a score ranging from 1 to 3 to each image (scoring was only based on the iliac-femoral segment; therefore, 11 CO₂ images were scored, i.e., one image per

Table 1 - Demographic and clinical profiles.

	GROUPS		
	CO ₂ (n=11)	ICM (n=10)	p-value
Age average (IIQ)	48 (43.5-60.0)	69 (60.0-75.0)	0.005 *
Age range (years)	37-73	58-79	
Median BMI (kg/m ²)	21.72	24.17	0.26 *
Diabetes (%)	6 (54.5)	4 (40.0)	0.67 #
Hypertension (%)	7 (63.6)	8 (80.0)	0.63 #
Dyslipidemia (%)	4 (36.4)	4 (40.0)	>0.99 #
Coronary disease (%)	0 (0.0)	1 (10.0)	0.48 #
History of tobacco use (%)	10 (90.9)	7 (70.0)	0.42 #
Intermittent claudication (%)	3 (27.3)	3 (30.0)	>0.99 #
Critical ischemia	8(72.7)	7(70.0)	0,63 #
TASC A lesion (%)	6 (54.5)	2 (20.0)	0.24 #
TASC B lesion (%)	2 (18.2)	2 (20.0)	0.24 #
TASC C lesion (%)	0 (0.0)	3 (30.0)	0.24 #
TASC D lesion (%)	3 (27.3)	3 (30.0)	0.24 #

Fisher's exact test, * Mann-Whitney U test, ICM: Iodine contrast media
CO₂: Carbon dioxide, BMI: Body mass index.



patient). A score of 1 was considered *poor* and was assigned when there was significant loss of definition within the vessels or collateral circulation, which precluded performing the procedure. A score of 2 was considered *fair* and was assigned when there was some loss of definition within the vessels or collateral circulation, which did not preclude the intervention. A score of 3 was considered *good* and was assigned when there was good contrast within the vessels or collateral circulation.

We evaluated the following clinical outcomes in both groups: the feasibility of the procedures, the complications, the surgical outcomes (femoral pulses and ankle brachial index (ABI)), the pre- and post-operative creatinine clearance, the contrast volume, the quality of the angiographic images, the procedure costs and the contrast media costs.

Statistical Analysis

Categorical variables were expressed as absolute frequencies and percentages and compared between groups via Fisher's exact test. Numerical variables were expressed as medians and interquartile ranges and compared via the nonparametric Mann-Whitney U test. The level of significance was 5%.

RESULTS

Endovascular treatment was performed in 21 patients (11 patients in the CO₂ group and 10 patients in the ICM group) with ilio-femoral disease. The percentages of overall technical success in the CO₂ and ICM groups were 90.9% and 90%, respectively, with only one procedure failure per group. These failures were the only patients who did not receive a self-expanding stent. No procedure-related deaths were noted and none of the patients presented with major clinical or surgical complications. Conversion to open surgery was not necessary in any of the cases and no contrast media-related complications were noted in either group (CO₂ or ICM).

The surgical outcomes were satisfactory in both groups. The presence of palpable femoral pulses measured immediately following each procedure indicated that the technical success rate was similar for both groups, as presented in Table 2. (The three patients with weak femoral pulses pre operatively presented with strong palpable femoral pulses post operatively and were considered technical successes.) Variability (difference

Table 2 - Surgical outcomes.

	GROUPS		
	ICM	CO ₂	p-value
Palpable femoral pulse pos n (%)	8 (88.9%)	8 (80%)	> 0.99 #
Median ABI variation	0.40	0.16	0.044 *

Fisher exact test, * Mann-Whitney U test, ICM: Iodine contrast media CO₂: Carbon dioxide, Pos: Immediate post-operative period, ABI: Ankle brachial index.

Table 3 - Comparison of pre- and post-operative creatinine clearance and delta clearance between the groups.

	ICM GROUP n=10	CO ₂ GROUP n=11	p-value#
Median creatinine clearance pre (IIQ)	90.20 (64.04-112.65)	79.40 (74.29-108.74)	0.94
Median creatinine clearance pos (IIQ)	93.05 (75.55-99.16)	88.40 (69.93-131.88)	0.62
Median delta clearance	0 (-16.9-10.28)	2.01 (-7.65-13.54)	0.44

Mann-Whitney U test, IIQ: Interquartile interval, ICM: Iodine contrast media, CO₂: Carbon dioxide, Pre: Before procedure, Pos: Post-operative period, Delta clearance: Creatinine clearance after the procedure minus clearance before the procedure.

between post-operative and pre-operative ABI) was higher for the ICM group (0.40 vs. 0.16, $p=0.044$).

For the ICM group, the median iodine contrast volume was 34.25 ml (range: 9 to 69 ml); for the CO₂ group, the median CO₂ volume was 60 ml (range: 23 to 130 ml). In four (36.4%) CO₂ patients, the use of iodine contrast was necessary to complete the procedure; however, none of these patients required more than 15 ml of iodine (range: 3 to 15 ml). The median iodine contrast volume used for the CO₂ patients who required iodine supplementation was 6.5 ml.

Creatinine clearance during the postoperative period did not differ significantly between the groups and remained stable during the post-operative period in both groups, as presented in Table 3.

The delta clearance (creatinine clearance after the procedure minus clearance before the procedure) was positive for the CO₂ group (2.01) and zero for the ICM group; however, this difference was not statistically significant ($p=0.44$).

Procedure length did not differ significantly between the groups (median length was 75 minutes for the CO₂ group and 70 minutes for the ICM group, $p=0.92$), indicating that CO₂ does not increase procedure duration. We also analyzed the procedure lengths for the different TASC classifications in each group and observed no significant differences.

The costs of the endovascular materials were similar for both groups, indicating that CO₂ does not increase procedure costs. However, the contrast medium costs were significantly increased for the ICM group compared with the CO₂ group (see Table 4).

Regarding angiographic image quality, which is presented in Table 5, 82% of the CO₂ angiography images were graded as either good or fair by both observers, with high inter-observer image quality concordance. All iodine arteriograms were graded as good by both observers. Figure 1 depicts an example of CO₂ angiography.

DISCUSSION

Treating patients with renal impairment or iodine related hypersensitivity remains a challenge when performing both diagnostic and therapeutic endovascular procedures. The use of CO₂ as an alternative contrast medium to ICM has provided a solution for these situations. Given that CO₂ is a good option for these patients, we aimed to investigate the possibility of the more widespread use of CO₂ by treating patients with no contraindications to either CO₂ or ICM.

In this study, we observed that the use of CO₂ did not change surgical outcomes given that the patients in the CO₂ group exhibited no differences in post-operative femoral pulses compared with the patients who received iodine contrast. The variation in ABI between the groups may be explained by differences in distal outflow (i.e., patients presented with different patterns of femoro-popliteal and infra-genicular stenosis/occlusion). In addition, procedure



Table 4 - Endovascular material costs and contrast costs between the CO₂ and iodine contrast media groups.

	GROUPS		p-value #
	CO ₂	ICM	
Endovascular material cost (IIQ)	1527.69 (1527.6 9-1789.23)	2302.69 (1540.19-2984.07)	0.168
Contrast cost (IIQ)	10.12 (10.12-10.12)	25.0 (25.0-25.0)	<0.001

Mann-Whitney U test, IIQ: Interquartile interval, ICM: Iodine contrast media, CO₂: Carbon dioxide, values in American dollars.

Table 5 - Evaluation of CO₂ angiography by observers.

	Ilio-femoral angiography		
	Good	Fair	Poor
Observer 1	7	2	2
Observer 2	5	4	2

length was not extended in the CO₂ group. Pain during the injection of CO₂ was not assessed because the patients were under general anesthesia. However, some of the patients could have received local anesthesia (and this assessment could have been undertaken). Due to the institutional research protocol (which mandated general anesthesia and an overnight stay on ICU for every vascular surgery patient), we were unable to compare discomfort (e.g., pain) during the procedure between the groups.

No significant differences were noted between the patients treated with CO₂ or iodine with respect to renal function during the post-operative period. In the ICM group, we did not observe any changes. The lack of alteration was most likely because of either a small sample size or the administration of a low volume of iodine contrast, as numerous studies have demonstrated the nephrotoxicity of ICM.

Endovascular material costs were similar for both groups, demonstrating that the use of CO₂ does not increase procedure costs. However, the contrast media costs for the ICM group were significantly higher compared with the CO₂ group, even after including the price of one 20-ml flask of ICM for balloon filling for each patient in the CO₂ group.

The evaluation of the angiographic images by the observers indicated that most of the images in the CO₂ group (82%) were evaluated as either good or fair; therefore, it may be possible to perform the procedure with only CO₂ in these cases. It is noteworthy that 63% of images for observer 1 and 45% for observer 2 were considered good with CO₂ and that all images with iodine were rated as good. However, our aim was to assess the feasibility of CO₂ not its superiority to iodine contrast media.

Images were considered poor with CO₂ in patients with long occlusions (2 patients with TASC D lesions for whom the filling of the distal vessels with CO₂ was difficult to assess). Additional poor images were observed at the beginning of our series, at which time we supplemented patients with iodine to verify vessel patency. Although the learning curve of this procedure may be overcome with experience, it is possible that CO₂ may not replace iodine in TASC D lesions. This limitation might be a problem for allergic patients but may also benefit patients with borderline renal function for whom iodine contrast media usage may be significantly reduced.

The CO₂ contrast agent is a gas; therefore, its manipulation requires the use of an unusual technique. Most vascular surgeons are not accustomed to working with a gaseous contrast medium, as its manipulation requires care to prevent air contamination (12). In addition, most surgeons lack the training needed to obtain good quality images.

Some CO₂ injection pumps have been developed (13-15), but they are expensive and difficult to use. We have developed and published a simple homemade delivery

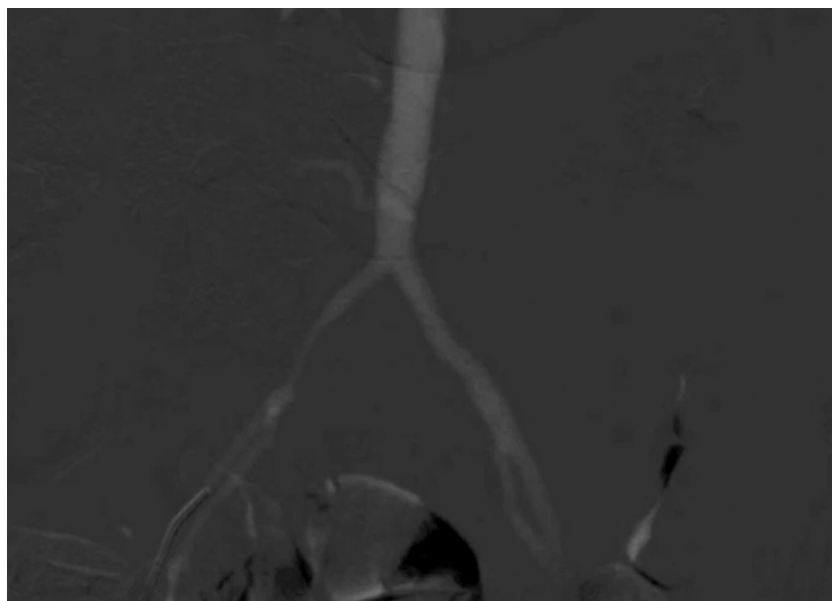


Figure 1 - Carbon dioxide angiography.



system for CO₂ in endovascular procedures, which uses materials that may be found in any hospital and are both cheap and reproducible. We believe that systems such as ours may lead to more widespread use of CO₂ as a contrast agent in endovascular procedures.

When performed by experienced physicians familiar with its use, CO₂ may provide angiographic image quality comparable to that achieved using iodinated contrast media.

We consider CO₂ as effective as ICM within the femoropopliteal territory. We demonstrated that CO₂ is a viable contrast option for ilio-femoral lesion treatment and observed outcomes similar to those noted with iodine contrast. Complications following the use of intra-arterial CO₂ have been reported, including *vapor-lock*, which occurs upon entrapment of CO₂ at the origin of a vessel, thereby impairing flow and potentially resulting in ischemia. This condition may be mild and cause only transient pain or may present as significant bowel ischemia (16,17). However, no adverse events were observed in our series secondary to the use of this particular contrast media. We routinely waited 3 minutes between CO₂ injections to avoid *vapor-lock* and any subsequent complications.

We believe that vascular surgeons should be trained during their residency in vascular surgery to acquire the technical ability to use CO₂. The technique is unusual, but its learning curve is not steep. The technique may be useful for vascular surgeons searching for the best contrast option for each patient, as opposed to being limited to the use of only one type of contrast.

Given this study's small sample size and the absence of a longer follow up period with respect to renal function, additional studies supporting our findings are encouraged.

Our study demonstrated that CO₂ is a good alternative to ICM in the endovascular treatment of ilio-femoral occlusive disease (except in TASC D patients, for whom iodine was often but not always necessary to complete the procedure). CO₂ is characterized by similar endovascular material costs, procedure lengths and surgical outcomes as well as reduced contrast medium costs compared with iodine contrast.

■ ACKNOWLEDGMENTS

This work was supported by the Ministério da Saúde do Brasil.

■ AUTHOR CONTRIBUTIONS

Mendes CA and Wolosker N conceived the study, participated in its design and drafting, collected the data, were responsible for analysis and interpretation of the samples, manuscript writing and statistical analysis. Martins AA, Teivelis MP and Yasbek AM collected the data, wrote the manuscript and helped with the statistical analysis. Kuzniec S and Fioranelli A participated in the analysis, interpretation of the samples and data collection.

■ REFERENCES

1. Wolosker N, Nakano L, Rosoky RA, Munia MA, Netto BM, Puech-Leão P. Endovascular treatment for intermittent claudication in patients who do not improve with clinical treatment. *Clinics*. 2005;60(3):193-200, <http://dx.doi.org/10.1590/S1807-59322005000300003>.
2. Ferrari FB, Wolosker N, Rosoky RA, D'Ippolito G, Wolosker AMB, Puech-Leão P. Natural history of stenosis in the iliac arteries in patients with intermittent claudication undergoing clinical treatment. *Rev Hosp Clin Fac Med Sao Paulo*. 2004;59(6):341-8, <http://dx.doi.org/10.1590/S0041-87812004000600006>.
3. Setacci C, De Donato G, Teraa M, Moll FL, Ricco J-B, Becker F, et al. Chapter IV: Treatment of critical limb ischaemia. *Eur J Vasc Endovasc Surg*. 2011;42 Suppl 2:S43-59.
4. Jongkind V, Akkersdijk GJM, Yeung KK, Wisselink W. A systematic review of endovascular treatment of extensive aortoiliac occlusive disease. *Journal of Vascular Surgery*. 2010;52(5):1376-83, <http://dx.doi.org/10.1016/j.jvs.2010.04.080>.
5. MD IFH, Kyung J Cho MD F, MD JGC. Carbon Dioxide Angiography to Reduce the Risk of Contrast-Induced Nephropathy. *Radiologic Clinics of NA*. Elsevier Ltd; 2009;47(5):813-25.
6. Garvin RP, Ryer EJ, Kendrick JB, Franklin DP. Endoleak visualized with carbon dioxide angiography during endovascular aneurysm repair using the Endurant stent-graft. *J Endovasc Ther [Internet]*. 2014;21(1):172-6. Available from: <http://eutils.ncbi.nlm.nih.gov/entrez/eutils/elink.fcgi?dbfrom=pubmed&id=24502499&retmode=ref&cmd=prlinks>
7. de Almeida Mendes C, de Arruda Martins A, Teivelis MP, Kuzniec S, Nishinari K, Krutman M, et al. Carbon dioxide is a cost-effective contrast medium to guide revascularization of TASC A and TASC B femoropopliteal occlusive disease. *Ann Vasc Surg*. 2014;28(6):1473-8, <http://dx.doi.org/10.1016/j.avsg.2014.03.021>.
8. Mendes C de A, Martins A de A, Teivelis MP, Kuzniec S, Wolosker N. Public private partnership in vascular surgery. *Einstein (Sao Paulo)*. 2014;12(3):342-6.
9. Holtzman RB, Lottenberg L, Bass T, Saridakis A, Bennett VJ, Carrillo EH. Comparison of carbon dioxide and iodinated contrast for cavography prior to inferior vena cava filter placement. *Am J Surg*. 2003;185(4):364-8, [http://dx.doi.org/10.1016/S0002-9610\(02\)01410-1](http://dx.doi.org/10.1016/S0002-9610(02)01410-1).
10. Sugimoto M, Yasuda H, Koda K, Suzuki M, Yamazaki M, Tezuka T, et al. Carbon dioxide-enhanced virtual MDCT cholangiopancreatography. *J Hepatobiliary Pancreat Sci*. 2010;17(5):601-10, <http://dx.doi.org/10.1007/s00534-009-0201-8>.
11. Mendes C de A, Wolosker N, Krutman M. A simple homemade carbon dioxide delivery system for endovascular procedures in the iliofemoral arteries. *Circ J*. 2013;77(3):831, <http://dx.doi.org/10.1253/circj.CJ-12-1310>.
12. Cho DR, Cho KJ, Hawkins IF. Potential air contamination during CO₂ angiography using a hand-held syringe: theoretical considerations and gas chromatography. *Cardiovasc Intervent Radiol*. 2006;29(4):637-41, <http://dx.doi.org/10.1007/s00270-005-0019-y>.
13. Nicolini A, Lovaria A, Meregaglia D, Palatresi S. Carbon dioxide angiography. A new injection system. *Radiol Med*. 2000;99(1-2):51-5.
14. Scalise F, Novelli E, Auguadro C, Casali V, Manfredi M, Zannoli R. Automated carbon dioxide digital angiography for lower-limb arterial disease evaluation: safety assessment and comparison with standard iodinated contrast media angiography. *J Invasive Cardiol*. 2015;27(1):20-6.
15. Giordano A, Messina S, Polimeno M, Corcione N, Ferraro P, Biondi-Zoccai G, et al. Peripheral diagnostic and interventional procedures using an automated injection system for carbon dioxide (CO₂): case series and learning curve. *Heart Lung Vessel*. 2015;7(1):18-26.
16. Johnson PL, Neperud J, Arnold J, Thomas J. Livedo reticularis and bowel ischemia after carbon dioxide arteriography in a patient with CREST syndrome. *J Vasc Interv Radiol*. 2011;22(3):395-9, <http://dx.doi.org/10.1016/j.jvir.2010.11.012>.
17. Prasad A. CO₂ angiography for peripheral arterial imaging: the good, bad, and ugly. *Cathet Cardiovasc Intervent*. 2015;85(5):878-9, <http://dx.doi.org/10.1002/ccd.25882>.