

## Platelet Migration and Bacterial Trapping Assay under Flow

Shuxia Fan<sup>1</sup>, Michael Lorenz<sup>1</sup>, Steffen Massberg<sup>1, 2</sup> and Florian Gaertner<sup>1, 2, 3, \*</sup>

<sup>1</sup>Medizinische Klinik und Poliklinik I, Ludwig-Maximilians-Universität, Munich, Germany; <sup>2</sup>Deutsches Zentrum für Herz-Kreislaufforschung (DZHK), Berlin, Germany; <sup>3</sup>Institute of Science and Technology Austria, Klosterneuburg, Austria

\*For correspondence: [F.Gaertner@med.uni-muenchen.de](mailto:F.Gaertner@med.uni-muenchen.de)

**[Abstract]** Blood platelets are critical for hemostasis and thrombosis, but also play diverse roles during immune responses. We have recently reported that platelets migrate at sites of infection *in vitro* and *in vivo*. Importantly, platelets use their ability to migrate to collect and bundle fibrin (ogen)-bound bacteria accomplishing efficient intravascular bacterial trapping. Here, we describe a method that allows analyzing platelet migration *in vitro*, focusing on their ability to collect bacteria and trap bacteria under flow.

**Keywords:** Platelets, Cell migration, Bacteria, Shear flow, Fibrinogen, *E. coli*

**[Background]** Platelets are small, anucleate cellular fragments released from megakaryocytes that reside within the bone marrow of mammalian organisms (Machlus and Italiano, 2013). Approximately 750 billion platelets circulate in human blood, constantly scanning the vasculature for damage of the endothelial surface. Upon encountering endothelial injury, platelets are immediately recruited in a well-characterized cascade of events including initial platelet tethering and rolling, followed by platelet activation, adhesion and spreading, eventually leading to fibrin (ogen)-dependent aggregation and subsequent thrombus retraction (Jackson, 2007). Platelet plug formation is a major step in physiological hemostasis, but also in pathological thrombosis after atherosclerotic plaque rupture, triggering myocardial infarction or stroke (Jackson, 2011).

In addition to their well-established role in hemostasis and thrombosis, platelets also evolved diverse immunologic functions (Semple *et al.*, 2011). Being among the first cells recruited to sites of inflammation and infection, platelets play an essential role in initiating intravascular immune responses (Wong *et al.*, 2013). Accordingly, platelets coordinate the recruitment of a variety of immune cells and instruct them with their effector programs (Sreeramkumar *et al.*, 2014). Platelets also have the ability to directly fight pathogens by releasing anti-microbial mediators and/or physically trapping and encapsulating invaders, thus preventing dissemination with the blood flow (Yeaman, 2014).

We recently identified platelet migration as an autonomous platelet function and showed that migration of single platelets provides a mechanism of controlling their interaction with pathogenic bacteria within the microcirculation (Gaertner *et al.*, 2017). Once adhering to immobilized fibrin (ogen), activated platelets use  $\alpha IIb\beta 3$  integrins to probe the resistance of their local microenvironment. When actomyosin-dependent traction forces overcome substrate resistance platelets eventually polarize and migrate thereby removing and accumulating platelet-bound ligands. As a prominent example, migrating platelets

collect and bundle fibrin (ogen)-bound bacteria accomplishing efficient intravascular bacterial trapping. In contrast to phagocytes like neutrophils, platelets behave like “covercytes” that do not internalize collected bacteria but rather accumulate them on their surface within invaginations of the plasma membrane (White, 2005). When exposed to shear stress *in vitro* platelets strongly bind to piled-up bacteria.

Here we provide a detailed protocol for the isolation of platelets from human blood and microscopic observation of platelet migration and trapping of *Escherichia coli* (*E. coli*) under flow.

## **Materials and Reagents**

1. Pipette tips 0.1-10  $\mu$ l (Eppendorf, epT.I.P.S.<sup>®</sup> Reloads, catalog number: 022491504)
2. Pipette tips 0.5-20  $\mu$ l (Eppendorf, epT.I.P.S.<sup>®</sup> Reloads, catalog number: 022491521)
3. Pipette tips 2-200  $\mu$ l (Eppendorf, epT.I.P.S.<sup>®</sup> Reloads, catalog number: 022491539)
4. Pipette tips 50-1,000  $\mu$ l (Eppendorf, epT.I.P.S.<sup>®</sup> Reloads, catalog number: 022491555)
5. 15 ml Falcon tube (Corning, catalog number: 352096)
6. Tygon 3350 silicone tube (Saint-Gobain Performance Plastics, catalog number: ABW00002)
7. Safety-Multifly-Needle 21G (SARSTEDT, catalog number: 85.1638.935)
8. Membrane adaptor (SARSTEDT, catalog number: 14.1112)
9. 5 ml syringes (BD, Discardit II<sup>™</sup>, catalog number: 301285)
10. 50 ml syringes (BD, perfusion, catalog number: 300136)
11. Bottomless 6 channel sticky slide (IBIDI, sticky slides VI<sup>0.4</sup>, catalog number: 80608)
12. Glass coverslips 24 mm x 24 mm (SCHOTT, NEXTERION<sup>®</sup>, No. 1.5, catalog number: D263T)
13. Cuvette (Eppendorf, catalog number: 952010069)
14. Human blood (taken from male and female healthy donors with the age of 25-40 years old)
15. Plasmid ptdTomato (Takara Bio, catalog number: 632531)
16. *E. coli* strains (DH12S, Invitrogen)

*E. coli* was transformed with plasmid ptdTomato. TdTomato is encoded within the *lac* operon and transcription is induced in the presence of isopropylthio- $\beta$ -galactoside (IPTG) (IPTG binds to the *lac* repressor and releases *lac* repressor from the *lac* operator). The plasmid carries the *bla*-gene for ampicillin resistance.

*Note: E. coli stock was made in LB with 7% dimethyl sulfoxide (v/v) and kept at -80 °C.*

17. Distilled water (ddH<sub>2</sub>O) (Millipore)
18. Dimethyl sulfoxide (DMSO) (Sigma-Aldrich, catalog number: D2438)
19. Phosphate buffered saline (PBS) (Sigma-Aldrich, catalog number: D8537)
20. Recombinant human albumin (rHSA) (Sigma-Aldrich, catalog number: A9731)

*Note: Dissolve rHSA in ddH<sub>2</sub>O to 8% (w/v) solution and store the aliquots at -20 °C.*

21. Prostaglandin I<sub>2</sub> sodium salt (PGI<sub>2</sub>) (Abcam, catalog number: ab120912)

*Note: Dissolve it in DMSO to 10 mg/ml and store the aliquots at -20 °C.*

22. HEPES solution (Sigma-Aldrich, catalog number: H0887)

23. 20% HNO<sub>3</sub> (Carl Roth, catalog number: 4337.2)
24. Hexamethyldisilazane (HMDS) (Sigma-Aldrich, catalog number: 440191)
25. Fibrinogen from human plasma (Sigma-Aldrich, catalog number: F3879)  
*Note: Dissolve it in 0.9% NaCl to 2 mg/ml and store the aliquots at -20 °C.*
26. Fibrinogen from human plasma, Alexa Fluor 488 conjugate (Thermo Fisher Scientific, Life technology, catalog number: F13191)  
*Note: Dissolve it in 0.1 M NaHCO<sub>3</sub> (pH 8.3) to 1.5 mg/ml and store the aliquots at -20 °C.*
27. U46619 (Enzo Life Sciences, catalog number: BML-PG023-0001)  
*Note: Dissolve it in DMSO to 28.8 mM and store the aliquots at -20 °C.*
28. Adenosine 5'-diphosphate sodium salt (ADP) (Sigma-Aldrich, catalog number: A2754)  
*Note: Dissolve it in PBS to 20 mM and store the aliquots at -20 °C.*
29. Thrombin from bovine plasma (Sigma-Aldrich, catalog number: T4648)  
*Note: Dissolve it in 0.1% (w/v) bovine serum albumin (BSA) to 100 U/ml and store the aliquots at -20 °C.*
30. LB broth (Sigma-Aldrich, catalog number: L3022)  
*Note: 20 g LB powder was dissolved in 1 L ddH<sub>2</sub>O and autoclaved.*
31. Isopropyl β-D-1-thiogalactopyranoside (IPTG) (Sigma-Aldrich, catalog number: I6758)  
*Note: Dissolve IPTG in ddH<sub>2</sub>O to 100 mM and store the aliquots at -20 °C.*
32. Ampicillin sodium salt (Sigma-Aldrich, catalog number: A9518)  
*Note: Dissolve ampicillin in ddH<sub>2</sub>O to 50 mg/ml and store the aliquots at -20 °C.*
33. Sodium citrate tribasic dehydrate (C<sub>6</sub>H<sub>5</sub>Na<sub>3</sub>O<sub>7</sub>·2H<sub>2</sub>O) (Sigma-Aldrich, catalog number: S4641)
34. Citric acid monohydrate(C<sub>6</sub>H<sub>8</sub>O<sub>7</sub>·H<sub>2</sub>O) (Sigma-Aldrich, catalog number: C1909)
35. Glucose (Merck, Calbiochem, catalog number: 346351)
36. Sodium chloride (NaCl) (Carl Roth, catalog number: 3957.3)
37. Sodium bicarbonate (NaHCO<sub>3</sub>) (Merck, catalog number: 106329)
38. Potassium chloride (KCl) (Carl Roth, catalog number: 6781.3)
39. Calcium chloride (CaCl<sub>2</sub>) (Sigma-Aldrich, catalog number: C8106)  
*Note: CaCl<sub>2</sub>·2H<sub>2</sub>O was dissolved in ddH<sub>2</sub>O to make 100 mM stock solution and stored at 4 °C.*
40. Acid-citrate-dextrose (ACD) buffer, pH 4.7 (see Recipes)
41. Modified Tyrode's buffer (see Recipes)
42. Fibrin buffer (see Recipes)

## Equipment

1. Pipette 0.1-2.5 µl (e.g., Eppendorf, Research plus: O18485E)
2. Pipette 0.5-10 µl (e.g., Eppendorf, Research plus: O30964E)
3. Pipette 10-100 µl (e.g., Eppendorf, Research plus: O30379E)
4. Pipette 100-1,000 µl (e.g., Eppendorf, Research plus: O29260E)
5. Orbi-Shaker (e.g., Benchmark)

6. pH meter (e.g., Mettler Toledo)
7. BioPhotometer (e.g., Eppendorf, model: BioPhotometer 6131)
8. Bunsen burner (e.g., Campingaz)
9. Centrifuge (e.g., Eppendorf, model: 5804)
10. Cell culture incubator (e.g., Binder)
11. Hematology counter (e.g., Horiba Medical)
12. KLM spin coater (e.g., Schaefer)
13. Inverted phase contrast and fluorescent microscope (e.g., OLYMPUS, model: IX83)
14. Syringe pump (e.g., KD Scientific, model: KDS 100)

### **Software**

1. Live cell imaging software that was connected to the microscope (e.g., CellSense)
2. Fiji software [National Institutes of Health (NIH)]

### **Procedure**

#### **A. Isolation of washed platelets**

1. Take human blood from cubital vein by safety butterfly-needle on volunteers. Discard the first 1 ml then take another 5 ml into a syringe with 714  $\mu$ l ACD buffer (see Recipe 1) inside.

*Notes:*

- a. *The volunteers should not take any drugs that affect platelets in the last two weeks.*
- b. *Draw blood smoothly to avoid platelets activation.*
2. Mix the blood with an equal volume of modified Tyrode's buffer (pH 6.5) (see Recipe 2) in a 15 ml falcon tube.
3. Centrifuge the mixture in Step A2 at 70 x g for 35 min without brake at room temperature (RT) to obtain platelet-rich plasma (PRP) retrieved from the upper layer.
4. Mingle 3 ml PRP with 7 ml modified Tyrode's buffer (pH 6.5) in the presence of 0.1% rHSA (w/v) and 100 ng/mg PGI<sub>2</sub> in a 15 ml Falcon tube.
5. Centrifuge the diluted PRP in Step A4 at 1,200 x g for 10 min at RT.
6. Discard the supernatant and suspend the pellet carefully in 1 ml Tyrode's buffer with pH 6.5.
7. Measure the platelet concentration on an automated hematology counter.
8. Store the purified platelets at room temperature until use.

*Notes:*

- a. *Platelets cannot be cultured, so they should be prepared daily from freshly drawn blood.*
- b. *The whole process of platelets preparation should be gentle enough to prevent platelets activation.*

## B. Bacteria preparation

1. Inoculate *E. coli* from a frozen stock in LB-broth medium with 100 µg/ml Ampicillin.  
*Note: Conduct E. coli inoculation at the Bunsen burner.*
2. Culture the inoculated *E. coli* at 37 °C with 260 rpm shaking overnight.
3. On the following day, dilute saturated culture of *E. coli* in LB-broth medium with 1 mM IPTG and 100 µg/ml Ampicillin (1:500 in a volume of 5 ml).
4. Culture the diluted *E. coli* in Step B3 at 37 °C with 260 rpm for 2.5 h to allow growth to mid-log phase.
5. Determine the colony forming units (CFU)/ml of cultured *E. coli* at OD<sub>600nm</sub>=1 (1, Determine viability of bacteria as a function of OD<sub>600nm</sub> by plating bacteria and counting colony forming units at various time points with increasing OD<sub>600nm</sub>. 2, Based on obtained growth curves determine CFUs/ml at OD<sub>600nm</sub>=1, we obtained 2.8 x 10<sup>8</sup> CFU/ml at OD<sub>600nm</sub> = 1.0).
6. Measure the *E. coli* concentration by optical density at OD<sub>600nm</sub> (expected OD<sub>600nm</sub> ~0.5-0.6).
7. Adjust the cultured *E. coli* to OD<sub>600nm</sub> equal to 0.25 in LB medium (0.7 x 10<sup>8</sup> CFU/ml; 1 ml), centrifuge at 1,200 x g for 5 min and discard the supernatant.
8. Suspend the bacteria pellet in equal volume of PBS (1 ml) and keep them on ice under light protection until use.

*Note: Perform the bacteria preparation according to the safety regulations of your laboratory.*

## C. Coverslip coating

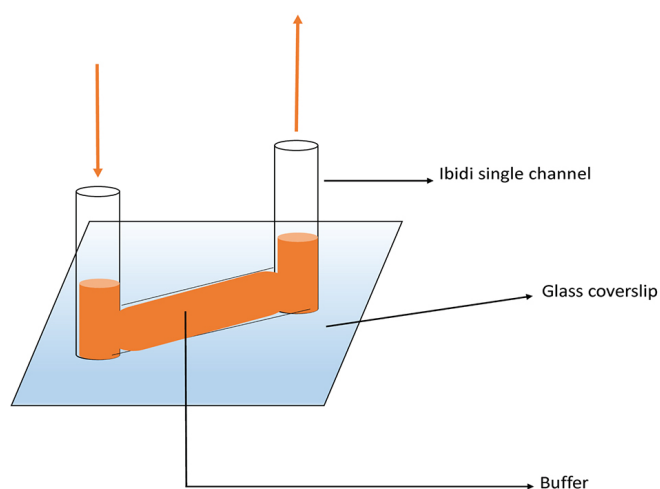
1. Immerse glass coverslips in 20% HNO<sub>3</sub> for 1 h on a shaker with the speed set at 60 rpm, then wash with ddH<sub>2</sub>O four times.
2. Soak acid-washed coverslips in ddH<sub>2</sub>O for another 1 h on the same shaker, and rinse again with ddH<sub>2</sub>O twice.
3. Dry the freshly cleaned coverslips at 90 rps for 10 sec by a KLM spin coater.
4. Silanize air-dried coverslips with HMDS at 80 rps for 30 sec using a spin coater to ensure homogeneous silanization.  
*Note: HMDS is volatile and inflammable, so coat the HMDS in a ventilation hood.*
5. Cut the 6 channel bottomless Ibidi sticky-slide into single channel slides (Figure 1), and mount to the silanized coverslip.

*Note: Mount coverslips and sticky-slide with some pressure until the bottom is sealed, otherwise the buffer in the channel will leak out.*

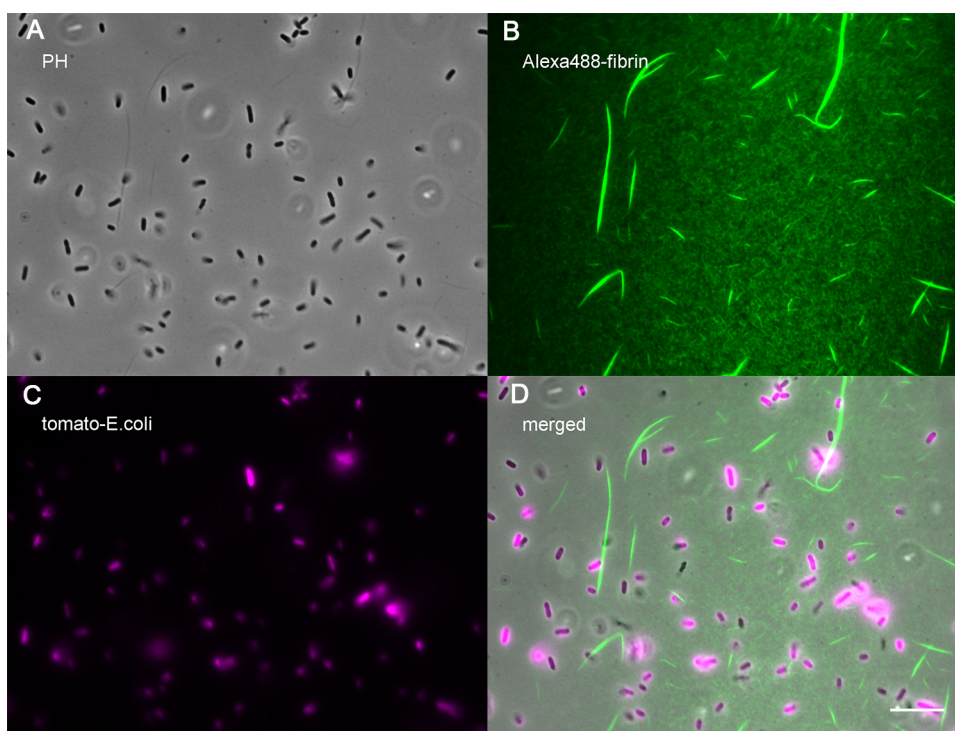


**Figure 1. A photo of Ibidi sticky slides.** The upper is the 6-channel slide; the lower is the 6-cutted single slides.

6. Seed 120  $\mu$ l prepared *E. coli* ( $8.4 \times 10^6$  CFUs) in PBS on silanized coverslip in the Ibidi channel at 37 °C for 30 min.
7. Coat 120  $\mu$ l fibrin (see Recipe 4) on the *E. coli* seeded coverslip for 15 min at RT.
8. Wash the fibrin-coated slides 5 times with modified Tyrode's buffer (pH 7.4; 120  $\mu$ l) (Figures 2 and 3).



**Figure 2. Diagram of the experimental setup.** The single Ibidi sticky slide channel is mounted on a silanized glass coverslip. The buffer is pipetted as indicated by the red arrows.



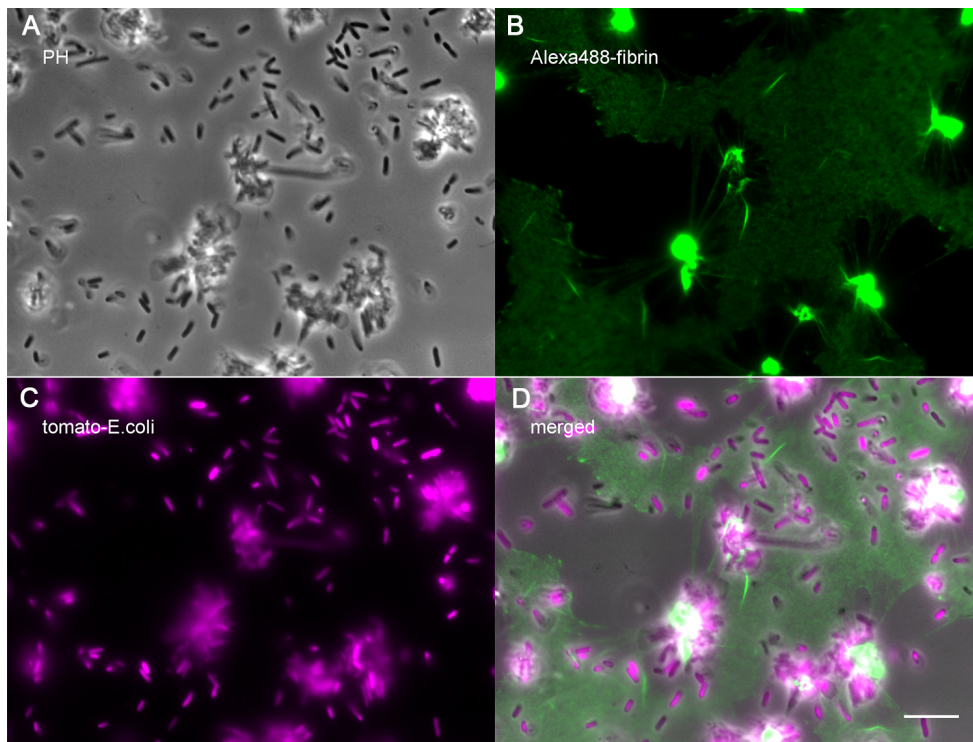
**Figure 3. A representative coverslip coated with fibrin and bacteria.** Freshly cleaned and silanized glass coverslip was seeded with *E. coli* and incubated at 37 °C for 30 min, then coated with fibrin for 15 min at RT, and finally washed with Tyrode's buffer. A. Phase contrast image of the coated channel. B. Fluorescent fibrin coating of the channel. C. Fluorescent *E. coli* bound to the channel. D. Merged channels. Scale bar = 10  $\mu$ m.

D. Microscopic observation of migrating platelets and bacterial capture

1. Supplement modified Tyrode's buffer pH 7.4 in a total volume of 240  $\mu$ l with 10<sup>4</sup>/ $\mu$ l human platelets, 1,000  $\mu$ g/ml rHSA, 200  $\mu$ M CaCl<sub>2</sub>, 2  $\mu$ M U46619 and 4  $\mu$ M ADP and add to above prepared channels coated with fibrin and live *E. coli*.

*Note: ADP, U46619 and CaCl<sub>2</sub> synergistically trigger platelets activation and spreading. Albumin is an anti-adhesive protein that lowers substrate adhesiveness.*

2. Incubate the channel in Step D1 at 37 °C for 1 h and 20 min (Figure 4).



**Figure 4. A representative image of migrating platelets collecting fibrin-bound *E. coli*.** Fibrin and live *E. coli* coated channel was incubated with  $10^4/\mu\text{l}$  human platelets in the presence of 1,000  $\mu\text{g/ml}$  rHSA, 200  $\mu\text{M}$   $\text{CaCl}_2$ , 2  $\mu\text{M}$  U46619 and 4  $\mu\text{M}$  ADP in modified Tyrode's buffer at 37 °C for 1 h and 20 min. Images show phase contrast (A) and epifluorescent micrographs (B and C). The black area in the fibrin image (B) indicates the area cleared by migrating platelets. Scale bar = 10  $\mu\text{m}$ . *E. coli* accumulated on platelets and bacteria density is reduced in areas where platelets migrated (D).

3. Assemble the Ibidi channel with a fluid tube connected to the syringe pump and place it on an inverted microscope with a heated stage.

*Note: Always carefully rule out air bubbles in the syringe and tube before the perfusion.*

4. Perfuse the channel with pre-warmed (37 °C) modified Tyrode's buffer (pH 7.4) at 0.5 dyne/cm<sup>2</sup> for 1 min to remove non-adhering bacteria and take phase contrast and epifluorescent images.

*Note: The flow rate  $\Phi$  (ml/min) of the syringe pump is calculated by the following formulas provided by the instruction of sticky sides from Ibidi:*

$$\tau = \eta \times 97.1 \times \Phi$$

$\tau$ : Shear stress (dyne/cm<sup>2</sup>)

$\eta$ : Dynamical viscosity (dyn s/cm<sup>2</sup>)

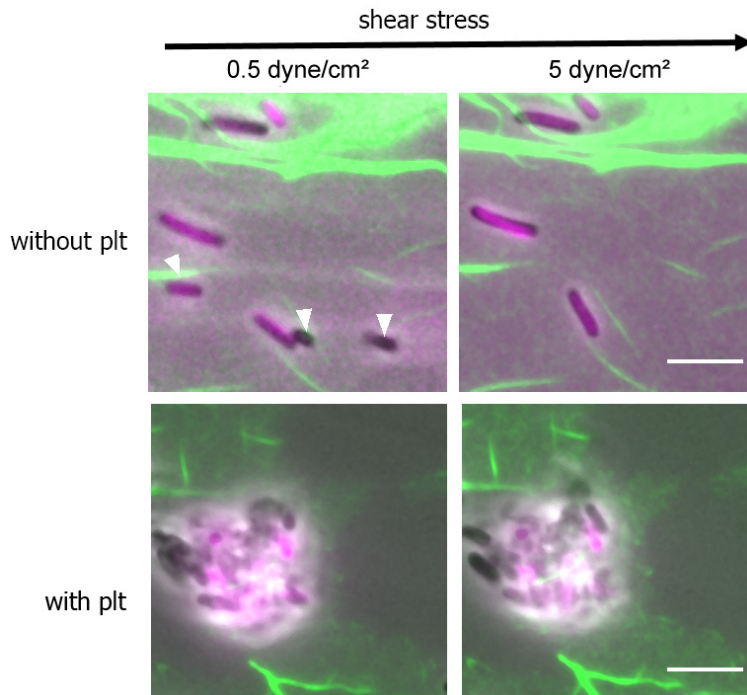
*The dynamical viscosity of cell culture medium at 37 °C is ~0.007.*

5. Perfuse the channel with modified Tyrode's buffer (pH 7.4) at 37 °C at 5 dyne/cm<sup>2</sup> for 5 min and take images (Figure 5).



6. Image acquisition: Filtercubes (Excitation/Emission): fibrin (Alexa 488) (494/528 nm); *E. coli* (tdTomato) (590/617 nm).

*Note: Deal with the waste of the perfusion buffer that contains bacteria properly according to the safety regulations.*



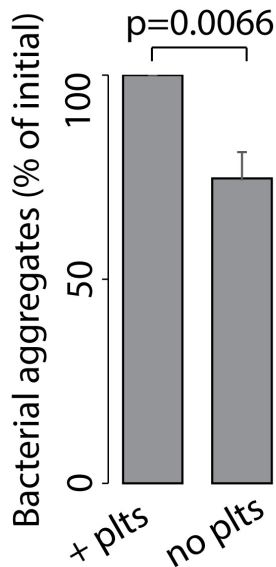
**Figure 5. Representative images of bacteria trapped without platelets and with platelets after 0.5 dyne/cm<sup>2</sup> and 5 dyne/cm<sup>2</sup>.** The micrographs show the merged phase contrast and fluorescent images. Scale bars = 5 µm.

*Note: In the absence of platelets, the number of *E. coli* (magenta) on the fibrin (green) was reduced after perfusion. The white arrows indicate the *E. coli* that were flushed away. In contrast, the bacteria bundle collected by migrating platelets is resistant to shear stress.*

### Data analysis

1. Open the acquired images in FIJI software (Schindelin *et al.*, 2012).
2. Adjust brightness and contrast of each channel separately to clearly identify bacteria and fibrin fibers, respectively.
3. Manually count fibrin-bound bacteria aggregates (in the presence and absence of platelets) before and after perfusion.
4. Calculate the fraction of bacteria resistant to perfusion for each experiment by dividing the number of bacteria aggregates after perfusion by the number of bacteria before perfusion. As an example, the bar plot in Figure 6 shows flow resistance of bacterial aggregates in the presence and absence of platelets.

- Test the statistical significance of your results. In the example shown in Figure 6 we repeated experiments 6 times and performed a Wilcox rank sum test to test for statistical significance (R software [R Development Core Team 2011]).



**Figure 6. Bar plots showing surface-bound bacterial aggregates after perfusion (5 dyne/cm<sup>2</sup>) as fraction of initially bound bacteria (in %).** Bacteria aggregates bound to platelets are more resistant to shear stress than bacteria aggregates bound to fibrin only. n = 6; Mean ± SEM; statistical significance was tested using the Wilcox rank sum test.

### Notes

*E. coli* (DH 12)-strain used in this protocol requires safety level 1 (S1) laboratories.

### Recipes

- ACD buffer, pH 4.7
  - 85 mM Sodium citrate tribasic dehydrate
  - 65 mM citric acid monohydrate
  - 111 mM glucose
- Modified Tyrode's buffer
  - 136.9 mM NaCl
  - 12.1 mM NaHCO<sub>3</sub>
  - 2.6 mM KCl
  - 5.5 mM glucose
  - 10 mM HEPES

*Note: Prepare 10x Tyrode's buffer (1.37 mol NaCl, 121 mM NaHCO<sub>3</sub>, 26 mM KCl) and store at*

4 °C. Dilute the stock Tyrode's buffer with ddH<sub>2</sub>O and add glucose as well as HEPES buffer for daily use. Then adjust the pH to 6.5 for platelets isolation and 7.4 for platelet migration.

### 3. Fibrin buffer

Modified Tyrode's buffer (pH 7.4) was supplemented with 300 µg/ml fibrinogen (1:10 mixed with Alexa488 conjugate fibrinogen), 12 mg/ml rHSA, 2 U/ml thrombin, and 1 mM CaCl<sub>2</sub>

*Note: Prepare the fibrin buffer just before use.*

## **Acknowledgments**

This protocol was adapted from a previously published study (Gaertner *et al.*, 2017). We thank Michael Lorenz for his excellent assistance in bacteria culture. This work was funded by the DFG SFB 914 (S.M. [B02 and Z01]), the DFG SFB 1123 (S.M. [B06]), the DFG FOR 2033 (S.M. and F.G.), the German Centre for Cardiovascular Research (DZHK) (MHA 1.4VD [S.M.]), FP7 program (project 260309, PRESTIGE [S.M.]), FöFoLe project 947 (F.G.), the Friedrich-Baur-Stiftung project 41/16 (F.G.), Marie Skłodowska Curie Individual Fellowship (EU project 747687, LamelliaActin [F.G.]).

## **Competing interests**

The authors declare that there is no conflict of interest or competing interest regarding the publication of this article.

## **References**

1. Gaertner, F., Ahmad, Z., Rosenberger, G., Fan, S., Nicolai, L., Busch, B., Yavuz, G., Luckner, M., Ishikawa-Ankerhold, H., Hennel, R., Benechet, A., Lorenz, M., Chandraratne, S., Schubert, I., Helmer, S., Striednig, B., Stark, K., Janko, M., Böttcher, R. T., Verschoor, A., Leon, C., Gachet, C., Gudermann, T., Mederos, Y. S. M., Pincus, Z., Iannacone, M., Haas, R., Wanner, G., Lauber, K., Sixt, M. and Massberg, S. (2017). [Migrating platelets are mechano-scavengers that collect and bundle bacteria](#). *Cell* 171(6): 1368-1382 e1323.
2. Jackson, S. P. (2007). [The growing complexity of platelet aggregation](#). *Blood* 109(12): 5087-5095.
3. Jackson, S. P. (2011). [Arterial thrombosis--insidious, unpredictable and deadly](#). *Nat Med* 17(11): 1423-1436.
4. Machlus, K. R. and Italiano, J. E., Jr. (2013). [The incredible journey: From megakaryocyte development to platelet formation](#). *J Cell Biol* 201(6): 785-796.
5. R Development Core Team (2011). [R: A Language and Environment for Statistical Computing](#). Vienna, Austria: the R Foundation for Statistical Computing.
6. Schindelin, J., Arganda-Carreras, I., Frise, E., Kaynig, V., Longair, M., Pietzsch, T., Preibisch,

- S., Rueden, C., Saalfeld, S., Schmid, B., Tinevez, J. Y., White, D. J., Hartenstein, V., Eliceiri, K., Tomancak, P. and Cardona, A. (2012). [Fiji: an open-source platform for biological-image analysis](#). *Nat Methods* 9(7): 676-682.
7. Semple, J. W., Italiano, J. E., Jr. and Freedman, J. (2011). [Platelets and the immune continuum](#). *Nat Rev Immunol* 11(4): 264-274.
  8. Sreeramkumar, V., Adrover, J. M., Ballesteros, I., Cuartero, M. I., Rossaint, J., Bilbao, I., Nacher, M., Pitaval, C., Radovanovic, I., Fukui, Y., McEver, R. P., Filippi, M. D., Lizasoain, I., Ruiz-Cabello, J., Zarbock, A., Moro, M. A. and Hidalgo, A. (2014). [Neutrophils scan for activated platelets to initiate inflammation](#). *Science* 346(6214): 1234-1238.
  9. White, J. G. (2005). [Platelets are coverocytes, not phagocytes: uptake of bacteria involves channels of the open canalicular system](#). *Platelets* 16(2): 121-131.
  10. Wong, C. H., Jenne, C. N., Petri, B., Chrobok, N. L. and Kubes, P. (2013). [Nucleation of platelets with blood-borne pathogens on Kupffer cells precedes other innate immunity and contributes to bacterial clearance](#). *Nat Immunol* 14(8): 785-792
  11. Yeaman, M. R. (2014). [Platelets: at the nexus of antimicrobial defence](#). *Nat Rev Microbiol* 12(6): 426-437.