

The Assessment Of Online Degree Programs: Lessons From Recent Alumni

Yoram Neumann, Touro University Worldwide, USA

Edith Neumann, Touro University Worldwide, USA

Shelia Lewis, Touro University Worldwide, USA

ABSTRACT

The main focus of this study was the assessment performed by recent alumni as an important component of online degree program outcomes assessment. A model of components of the online learning environment was developed and tested to predictive various levels of educational outcomes of online degree programs separately for bachelor and master degree programs' alumni. The educational outcomes include direct educational outcomes and attributed educational outcomes. The model was then validated in predicting summative outcomes assessment. The model played an important role in understanding degree program's online educational outcomes and its predictive validity across all outcomes and degree levels is very high. The alum assessment of the quality of the learning model was found to be the most dominant predictor of educational outcomes for all assessment criteria and for all levels of degree programs. Finally, the explanations and implications of these findings were discussed.

Keywords: Online Learning; Learning Model; Educational Outcomes Assessment

INTRODUCTION: THE INCREASING ROLE OF ONLINE LEARNING

Access, success, and affordability of higher education are main topics of discussion among policy makers. The most recent U.S Department of Education data from fall 2014 indicates that 5.8 million students took at least one online course, with 2.85 million of them studying exclusively online. The question remains whether or not online education can play a significant role in leveling the playing field and eventually reducing income inequality. According to the U.S. Department of Education and the Center for Education at Georgetown University, about a third of undergraduate students in U.S. universities and colleges are first-generation learners whose bachelor degree graduation rates within six years from starting their studies are only 25%. About 54% of these first generation students are adult learners (ages older than 24 years). Additionally, 4.5 million undergraduate students are both first generation and low income and their bachelor degree completion rate is only 11%.

Direct Assessment of Online Degree Programs based on Learning Models

Although policy makers are interested in the most visible dimensions of outcome assessment, e.g., retention and graduate rates as well as time-to-degree, many universities have developed much richer assessment programs designed to continuously improve their online degree programs (Rubin et al., 2013; Seiver & Troja, 2014; Johansson & Felten, 2015). One of the key concepts developed in the past twenty years was the learning model. The learning model is routed in the basic belief that successful learning outcomes depend on multiple factors employed together in a holistic approach. Recent newly developed Learning Management Systems (LMS) provided for the complete integration of the online pedagogy, faculty, and learner-centered support services. A successful learning model was built to demonstrate accountability, transparency, and quality assurance while maintaining internal consistency from the University, degree program, and the individual course learning outcomes. Universities developed rich mechanisms to reach these goals including, among others, degree program rubrics, course rubrics, program review, attaining learning competencies, and successfully completing degree qualification (Jankowski & Marshall, 2015).

The Problematic Nature of Course Evaluation as Part of Assessment

While several constituencies were involved in the aforementioned efforts, the focal point remained on faculty internal assessment, experts outside the university, and policy makers. To the extent that graduating students or recent alumni were involved, their involvement was predominantly focused on course evaluations or general student satisfaction surveys. Student evaluations at the end of each course were the most sought upon student input in the assessment process. Furthermore, results of these evaluations were incorporated into various programmatic or even institutional decision making (e.g., faculty retention). Nevertheless, the continuing reliance on course evaluations for the assessment of learning and outcomes as well as for academic decision making remains problematic due to lack of their predictive validity. Sitzmann et al. (2010) conducted a meta analysis of 137 independent studies measuring the relationship between student self-assessment of knowledge in the course and actual cognitive learning in the course. They found the weighted correlation to be only 0.27. In other words, only student self assessment of knowledge explained less than 9 percent of the variation in actual knowledge while 91 percent of student actual learning in a course could not be explained by the popular course evaluation.

Recent Alumni Assessment has a High Level Consequential Validity

Very few universities, in comparison to course evaluations, used recent alumni as a source of assessing learning outcomes although recent alumni and graduates are undoubtedly in a better position to assess the learning outcomes immediately after completing their degree programs. The role of such assessment is salient for universities in general, as this information can influence the alumni relations with their institution in the future with potential ramifications for the institution's attractiveness and reputation. For analyzing learning-model based online degree programs, recent alumni assessment as well as self reporting engagement was found to have a consequential validity (McCormick & McClenney, 2012). This consequential validity served well university faculty, leadership, and policy makers. The consequential validity of a recent graduates exit instrument can provide these groups with the assessment of the various components of the online learning model and various dimensions of policy-relevant program outcomes. Furthermore, qualitative assessment by recent alumni can play an important role in identifying program strengths and weaknesses and thus can be incorporated into the strategic planning process. In sum, alumni assessment by an exit survey of online degree programs fulfills all the needs of consumers of these evaluations including those identified by Thompson & Irele (2007): justification of investment; measuring progress toward program objectives; measuring "quality" and/or effectiveness; providing basis for improvement; and informing institutional strategic planning and decision making.

METHODS

General

The context of this recent alumni assessment of their online degree program was an online learning model similar to the one discussed by Neumann and Neumann (2010). The pedagogy included a completely interactive threaded discussion that allowed students to interact and engage with faculty members as well as each other. For each course, the learning model included problem-based learning through case studies and project-based learning through a signature assignment. Self-reflection was added as part of the course as well through a required essay at the end of the course. Assessment including faculty and outside experts were done separately for each program by using multiple indicators and then aligning institutional learning outcomes, program learning outcomes and course learning outcomes.

In addition to the direct and indirect measures mentioned above, we performed a recent alumni survey. It included, among other indicators, indicators relating to the learning environment, indicators relating to program outcomes, and a qualitative assessment of the degree program and the university as a whole.

Subjects

The population for this study was all alumni who successfully completed their degree program during two semesters. As part of the final degree audit, all alumni participated in required assessment and the completed

questionnaires were submitted anonymously (Several studies used a similar approach, e.g., Spooner et al., 2008; Findlay-Thompson & Mombourquette, 2013). Graduating students were given ample time to thoughtfully complete the questionnaire. The overall population of this study consists of 843 master level recent alumni and 564 bachelor level recent alumni. These recent graduates served as the benchmark for continuing improvements as well as reporting summative assessments and created time-series dashboards to pertinent stakeholders.

Measures

The assessment of Online Learning Environment included three facets: the assessment of learner-centered support services, the assessment of the quality of faculty, and the assessment of the learning model.

Recent alumni assessment of the learner-centered support services provided by the university and the program consisted of six items ranging from 1 to 5 (from "very low" to "very high"). The questions were formulated to assess how responsive to student needs and concerns were each of the following: advisers, administrative personnel, IT services, student support services, the office of the registrar, and financial aid services.

Recent alumni assessment of overall faculty quality included four items on the same five point scale where recent alumni rated the overall quality of the faculty; the faculty dedication to providing a quality of learning experience; the accessibility of the faculty; and faculty responsiveness to issues that the recent alum wished to discuss.

The assessment of the learning model used the same five-point scale where recent alumni rated the following outcomes:

1. the quality of the learning model in comparison with other learning opportunities that alumni experienced;
2. the degree to which the learning model was responsive to the alumni educational needs; and
3. the degree to which the learning model succeeded in fostering and supporting effective learning.

Educational Outcomes of the Degree Program originally consisted of two levels of outcomes: direct learning outcomes and attributed learning outcomes.

Recent assessment of direct learning outcomes used the same five point scale and included four items:

1. alum rating of the overall standards of education that he/she received;
2. alum comparison of the quality of learning that she/he received to that of peers or colleagues;
3. alum rating of acquiring both communication and critical thinking skills; and
4. alum assessment of the overall quality of learning in the degree program.

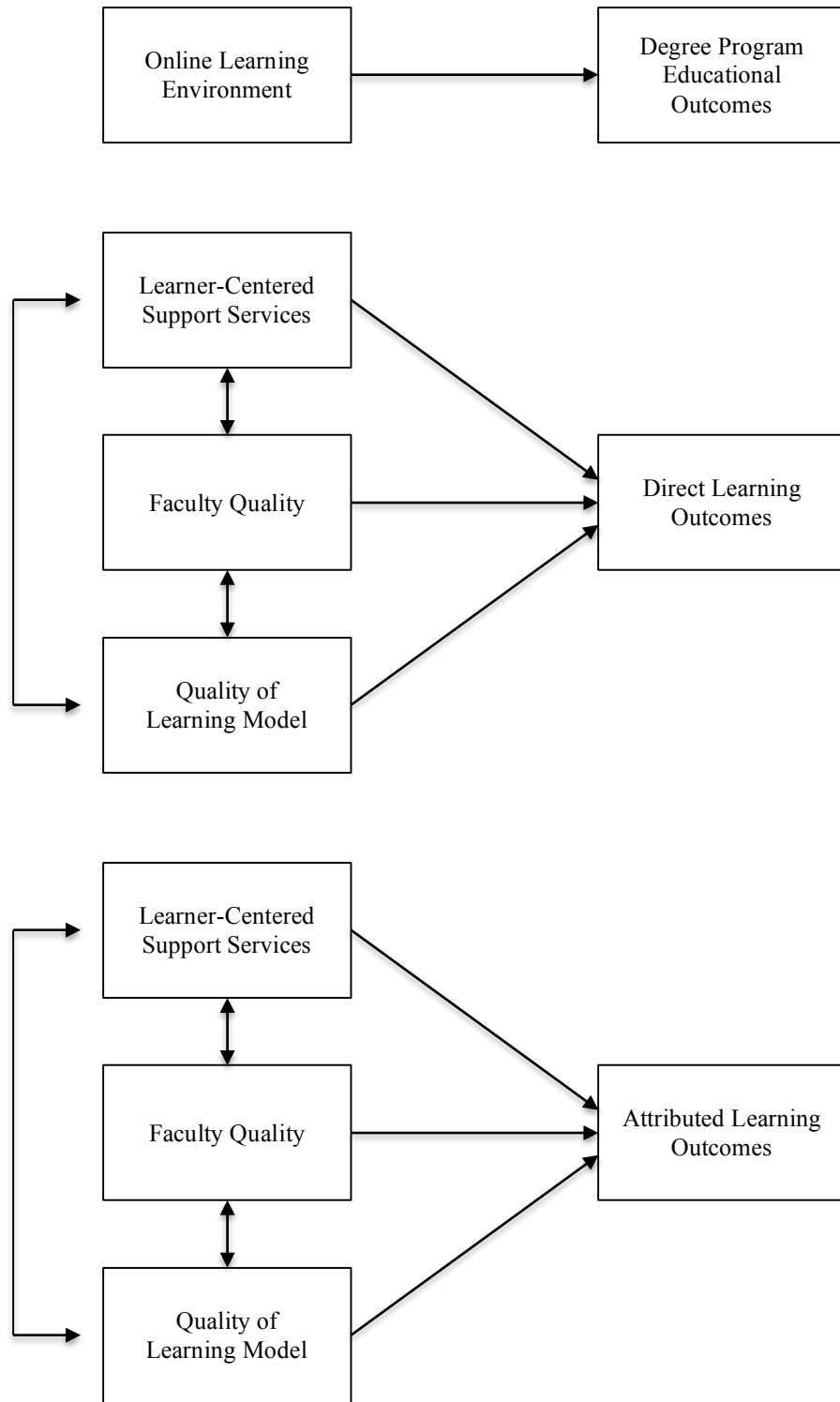
Attributed learning outcomes included five items (five-point scale) assessing to what extent did the degree program learning experience contribute to personal growth; intellectual growth; career preparation and enhancement; and social and cultural awareness.

Analysis

Each concept was measured by a scale consisting of the sum of the items belonging to the domain divided by the number of items. Consequently, all scales were between the range of 1-5 ranging from very low ("1") to very high ("5"). The first step was to assess the norms and reliability of each scale separately for bachelor and master degree programs. The second stage of the analysis included several multiple regression analyses where the three assessments of online environment scales were the predictors (independent variables) of each of the two facets of educational outcomes (dependent variables). These regression models again were performed separately for the bachelor level and for the master level. The relative importance of each predictor was assessed by its standardized regression coefficient (beta). The results of the quantitative model were then validated by adding a summative assessment.

The overall conceptual framework and regression models are presented in Figure 1.

Figure 1. The Conceptual Framework and the Regression Models



RESULTS

Table 1. Means, Standard Deviations and Reliability Coefficients of Components of the Assessed Online Learning Environment and Educational Outcomes

Bachelor Degree Programs					
Scale	No. of Items	Range	Mean	SD	Reliability
Learner-Centered Support Services	6	1-5	4.52	0.54	0.87
Faculty Quality	4	1-5	4.55	0.55	0.86
Quality of Learning Model	3	1-5	4.49	0.55	0.79
Direct Educational Outcomes	4	1-5	4.44	0.56	0.85
Attributed Educational Outcomes	4	1-5	4.47	0.62	0.88
Master Degree Programs					
Learner-Centered Support Services	6	1-5	4.48	0.54	0.86
Faculty Quality	4	1-5	4.47	0.57	0.85
Quality of Learning Model	3	1-5	4.40	0.62	0.81
Direct Educational Outcomes	4	1-5	4.34	0.63	0.88
Attributed Educational Outcomes	4	1-5	4.36	0.67	0.87

Table 1 presents the characteristics of the various scales used in this study. Overall, the mean for all measures was quite high and ranges from 4.44 to 4.55 for recent bachelor degree alumni and from 4.34 to 4.48 for recent master degree graduates. Interestingly, the mean scores for all measures were slightly higher for recent bachelor degree alumni in comparison with recent master degree alumni. The Cronbach's reliability coefficients for all scales were very high ranging from 0.79 to 0.88. Overall, the mean scores of all scales were quite high and to use them as benchmarks to assess continuous improvements would present positive challenges for faculty and leadership.

Table 2. Determinants of Educational Outcomes - Bachelor Degree Programs

A – Dependent Variable – Direct Educational Outcomes		
Independent Variables	b	Beta
Learner-Centered Support Services	.147	.140**
Faculty Quality	.222	.218**
Quality of Learning Model	.576	.565**
R ²	.75**	
B – Dependent Variable – Attributed Educational Outcomes		
Independent Variables	b	Beta
Learner-Centered Support Services	.231	.200**
Faculty Quality	.225	.200**
Quality of Learning Model	.471	.419**
R ²	.58**	

* P < 0.05

** P < 0.01

Table 2 presents for recent bachelor degree graduates, the predictive model of educational outcomes for direct education outcomes and for attributed education outcomes where the three indicators of online learning environment serve as the predictors.

The first analysis presents the direct educational outcomes as the dependent variables. Overall, the three online environment independent variables exhibited a very strong predictive power of the direct educational outcomes (with an R² coefficient of 0.75; p<0.01). Clearly, one predictor was the most influential in explaining direct educational outcomes and it was the quality of the learning mode (beta coefficient of 0.57; p<0.01). This predictor was so strong that by itself it controlled 71 percent of the variation of direct educational outcomes. Quality of faculty was the second important explaining variable while learner-centered support services added very little to the predictive power of the model.

In explaining attributed educational outcomes for recent bachelor alumni, the overall predictability of the assessed online learning environment variable was still quite strong (R^2 is 0.58) but considerably lower than the predictability of the assessment of direct education outcomes (R^2 of 0.75). The assessed quality of the learning model was still the dominant predictor attributed educational outcomes (beta coefficient of 0.42; $p < 0.01$). Again, this predictor was so important for the assessment of recent alumni attributed educational outcomes, which it by itself explained 53 percent of the variation (R^2) of attributed educational outcomes.

Although the overall predictability of each model was high but distinctively different (R^2 coefficients of 0.75 and 0.58 for direct and attributed educational outcomes respectively) the dominant predictor in both cases was the same (the assessed quality of learning model). In both cases, faculty quality and learner-centered support services were positively related to educational outcomes but played relatively minor predictive roles.

Table 3. Determinants of Educational Outcomes -Master Degree Programs

A – Dependent Variable – Direct Educational Outcomes		
Independent Variables	b	Beta
Learner-Centered Support Services	.031	.027
Faculty Quality	.283	.256**
Quality of Learning Model	.646	.634**
R^2	.77**	
B – Dependent Variable – Attributed Educational Outcomes		
Independent Variables	b	Beta
Learner-Centered Support Services	.091	.074*
Faculty Quality	.125	.107*
Quality of Learning Model	.658	.610**
R^2	.57**	

* $P < 0.05$

** $P < 0.01$

Table 3 presents for recent master degree alumni, the predictive model of educational outcomes both for direct education outcomes and for attributed education outcomes. The predictors were the same three indicators of online learning environment. The results for recent master degree alumni were very similar to the results for recent bachelor alumni.

Overall, for recent master degree alumni, the online learning environment played a strong role in predicting direct educational outcomes ($R^2 = 0.77$; $p < 0.01$) and attributed educational outcomes ($R^2 = 0.57$; $p < 0.01$). The most dominant predictor in both cases remained the quality of the learning model (with beta coefficients of 0.63 and 0.61 respectively; $p < 0.01$). Faculty quality played a statistically significant role in predicting direct educational outcomes with a noticeable beta coefficient (0.26) although much smaller than the main predictor. Learner-centered support services, by themselves, were not found to have a meaningful effect.

MODEL VALIDATION THROUGH THE SUMMATIVE OUTCOMES ASSESSMENT

In order to validate the differential roles of online learning environment in predicting recent alumni direct and attributed educational outcomes, we have added a summative outcomes assessment to our survey. The summative outcomes assessment scale consists of two items measuring the extent to which the degree program contributes directly to successful career and the extent to which the degree is worth the financial expense incurred by the recent alum. Both items were rated as the most important goals of education by alumni. Each item was measured on a five point scale from very low ("1") to very high ("5"). The overall summative assessment scale is the mean of the two items.

Table 4. Means, Standard Deviations and Reliabilities of Summative Outcomes Assessment

Overall Summative Assessment					
Scale	No. of Items	Range	Mean	SD	Reliability
Bachelor Degree - Recent Alumni	2	1-5	4.45	0.63	0.75
Master Degree - Recent Alumni	2	1-5	4.36	0.66	0.78

Table 4 presents the characteristics of the two items summative scale. Recent bachelor degree alumni rated this item at 4.45 while recent master graduates rated it at 4.36. The Cronbach's reliability coefficients for this scale were 0.75 and 0.78 respectively.

Table 5. Determinants of Summative Outcomes Assessment

A - Recent Bachelor Degree Alumni		
Independent Variables	b	Beta
Learner-Centered Support Services	-.05	-.04
Faculty Quality	.46	.40**
Quality of Learning Model	.50	.46**
R ²	.61**	
B – Recent Master Degree Alumni		
Independent Variables	b	Beta
Learner-Centered Support Services	.12	.10**
Faculty Quality	.17	.15**
Quality of Learning Model	.61	.57**
R ²	.60**	

* P < 0.05

** P < 0.01

In both bachelor degree and master degree alumni (Table 5), the online learning environment has a strong predictive validity in determining the summative outcomes assessment with R² coefficients of 0.61 and 0.60 respectively. At the bachelor degree level, the quality of learning model was the strongest predictor while the quality of faculty was a close second. Learner-centered support services did not play a meaningful role. At the master degree level, the quality of learning model played the dominant role in predicting summative outcomes assessment. The other predictors played a minor role in explaining summative outcomes assessment.

CONCLUSION

Several important conclusions can be derived from this study. First, recent alumni perceptions of their learning environment were extremely important to understand their assessment of direct, attributed, and summative educational outcomes. The overall assessment online learning environment was measured by highly reliable scales and the same conclusion was valid for scales measuring direct, attributed, and summative learning outcomes. Overall, the mean scores of all scales were quite high and using them as benchmarks to assess continuous improvements would present positive challenges for faculty and leadership. With that in mind, online degree programs can establish those measures as benchmarks against which new improvements and other changes in online degree programs can be assessed.

Second, the major determinant of direct learning outcomes was the assessment of the quality of the learning model. This conclusion was confirmed both for recent graduates of the bachelor and master degree programs. The R² coefficients for this model were the highest (0.75 and 0.77 respectively) indicating that the quality of learning model is the dominant factor in addressing direct educational outcomes. The same conclusion about the relative salience of the quality of learning model holds also for predicting the assessment attributed learning outcomes although the coefficient of determination (R²), while still very strong (0.58 and 0.57 for recent bachelor and master graduates), was somewhat lower than in the prediction of direct learning outcomes.

Third, the summative assessment of educational outcomes which examined how much the degree was worthwhile pursuing both intrinsically and extrinsically further validated the superiority of the quality of learning model as the dominant determinant. The second predictor, faculty quality also played a role (though to a less extent than the quality of the learning model) only for recent bachelor degree graduates.

The lack of strong predictive roles of faculty quality (in some cases) and the learner-centered support services might be because a robust learning model (which was the learning model used in this study) incorporated some or all the elements of these concepts into both the design and implementation.

Our findings clearly indicated that the same reliability and predictive patterns existed for both bachelor degree programs and master degree programs and that one dimension of the online learning environment (the quality of learning model) consistently and dominantly predicted the outcomes of direct learning, attributed learning, and the summative assessment of the degree program.

We lumped together all alumni for master degree on one group and for bachelor degree on another group. We tried to see if running our model for the aggregate bachelor and master groups are consistent with single program results. Thus, we applied the same model for a group of MBA alumni to ascertain whether or not the same pattern would emerge. The results indicated that same pattern was confirmed. In assessing summative educational outcomes the online learning environment predictors accounted for 60 percent of the variation ($R^2=0.60$; $p<0.01$) while beta coefficients for quality of the learning model, faculty quality, and learner-centered support services were 0.63, 0.13, and 0.06 respectively. Again, the quality of learning model was the dominant predictor.

We applied the same model to a small group of recent online doctorate recipients and also received a similar pattern. We used the simple correlation instead of the multivariate regression model due to the small sample size. Although we expected the quality of faculty to be the most important predictor of summative outcomes assessment of recent doctoral alumni, the quality of learning model turned out to have a higher level of predictive validity. That is, there is a correlation of 0.63 between the learning model quality and summative outcomes assessment versus a correlation of 0.55 between faculty quality and summative outcomes assessment.

Finally, given the accuracy of the predictions and the reliability of the various scales, our findings clearly confirmed that there is a distinct and quite important role for recent alumni in a further development of the assessment of online degree programs. This assessment enriches the educational outcomes data and accountability of online education.

AUTHOR BIOGRAPHIES

Yoram Neumann, (PhD Cornell University), is the Chief Executive Officer and University Professor of Business Administration at Touro University Worldwide. He assumed this position in 2012. Previously he was the Founder, President, and CEO of Touro University International (TUI). TUI was later sold and is currently Trident University International. Prior to founding TUI, Dr. Neumann served as the Executive Vice President and Vice President for Academic Affairs and Dean of the College of Business and Public Administration at California State University, Dominguez Hills. Professor Yoram Neumann also served as Research Professor and the Director of the Graduate Program in Technology Strategy and Policy at Boston University and Dean of the Faculty of Humanities and Social Sciences at Ben-Gurion University. Email: yoram.neumann@tuw.edu (contact author).

Edith Neumann, Ph.D. (Boston University) is the Provost and Chief Academic Officer and University Professor of Health Sciences at Touro University Worldwide. She assumed this position in 2012. Dr. Edith Neumann was the Vice President for Academic Affairs and is the founding Dean of the Colleges of Education and Health Sciences at Touro University International (currently Trident University International). Dr. Neumann served as Dean of the School of Health and Director of the Center for Policy Research and Evaluation at California State University, and on the faculty of Boston University and Ben-Gurion University.

Shelia Lewis, Ph.D. (Touro University International) is the Associate Provost, Director of the School of Business Administration, and Professor of Business Administration at Touro University Worldwide. She assumed this position in 2013. Previously, Dr. Lewis served as the Associate Provost and Professor of Business Administration at

United States University. Prior to joining United States University, Dr. Lewis served as the Director of Institutional Research at Touro University International.

REFERENCES

- Findlay-Thompson, S. & Mombourquette, P. (2013). Evaluation of a flipped classroom in an undergraduate business course. *Business Education & Accreditation*, 6(1), 63-71.
- Jankowski, N. A., & Marshall, D. W. (2015). Degree qualifications profile (DQP) and tuning: What are they and why do they matter?. *New Directions for Institutional Research*, 2015(165), 3-13.
- Johansson, C. and Felten, P. (2015) Transforming students: Fulfilling the promise of higher education. Baltimore: John Hopkins University Press.
- McCormick, A. C., & McClenney, K. (2012). Will these trees ever bear fruit? A response to the special issue on student engagement. *Review of Higher Education*, 35(2), 307-333.
- Neumann, Y. & Neumann E.F. (2010). The Robust Learning Model (RLM): A comprehensive approach to a new online university. *Journal of College Teaching and Learning*, 7(1), 27-36. Retrieved from <http://www.cluteinstitute.com/ojs/index.php/TLC/article/view/76/74>.
- Sitzmann, T. M., Ely, K., Brown, K. G., & Bauer, K. N. (2010). Self-assessment of knowledge: A cognitive learning or affective measure? *Academy of Management Learning and Education*, 9(2), 169 –191.
- Rubin, B., Fernandes, R., & Avgerinou, M. D. (2013). The effects of technology on the community of inquiry and satisfaction with online courses. *The Internet and Higher Education*, 17, 48-57.
- Seiver, J. G., & Troja, A. (2014). Satisfaction and success in online learning as a function of the needs for affiliation, autonomy, and mastery. *Distance Education*, 35(1), 90- 105.
- Spooner, M., Flowers, C., Lambert, R., & Algozzine, B. (2008). Is more really better? Examining perceived benefits of an extended student teaching experience. *The Clearing House: A Journal of Educational Strategies, Issues and Ideas*, 81(6), 263-269.
- Thompson, M. M., & Irele, M. E. (2007). Evaluating distance education programs. In M. G. Moore (Ed.), *Handbook of distance education* (2nd ed.). Mahwah, NJ: Lawrence Erlbaum Associates.

NOTES