

1997

Connection, June/July 1997

Eastern Michigan University

Follow this and additional works at: http://commons.emich.edu/alumni_news

Recommended Citation

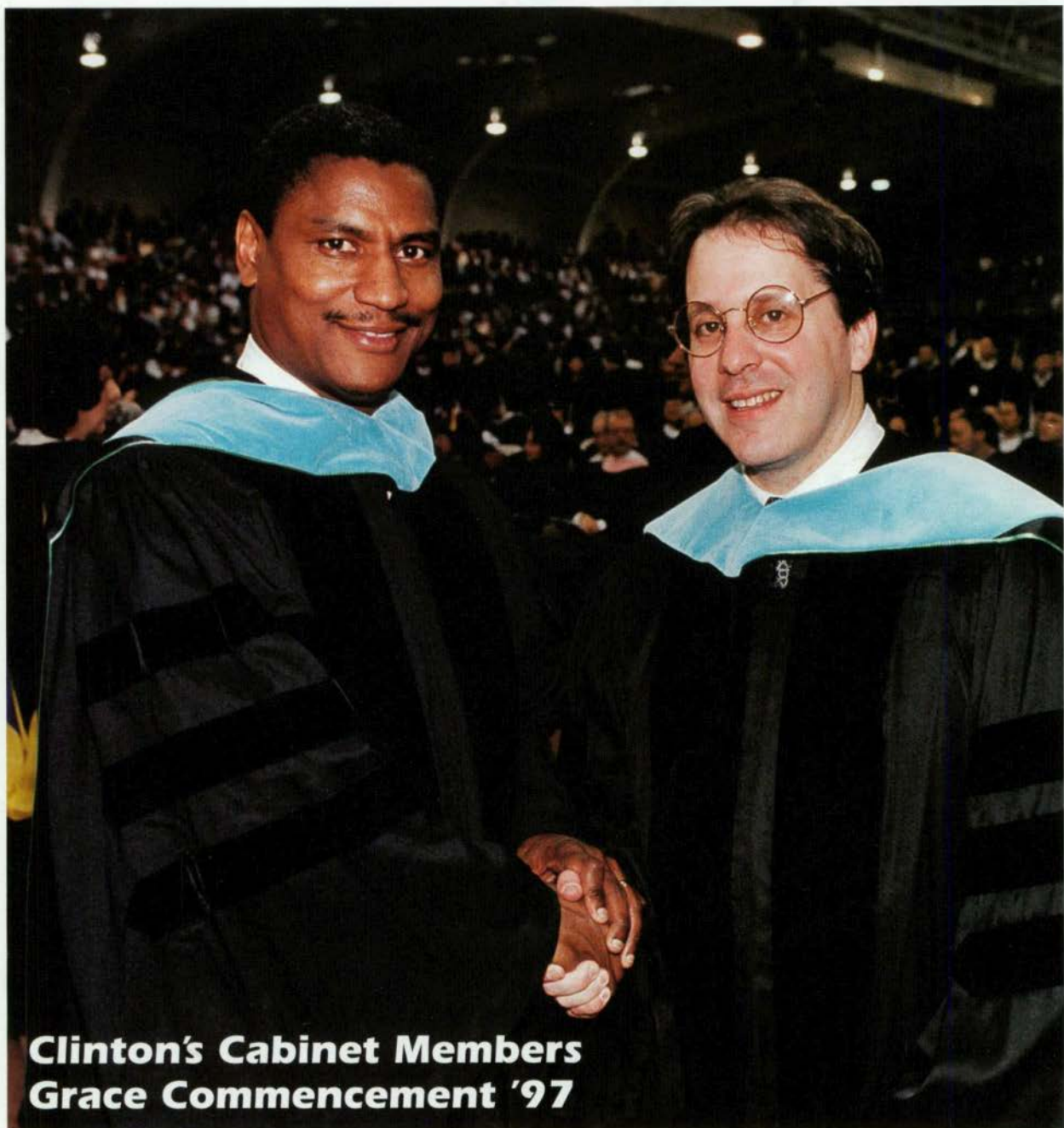
Eastern Michigan University, "Connection, June/July 1997" (1997). *Alumni News*. 112.
http://commons.emich.edu/alumni_news/112

This Article is brought to you for free and open access by the University Archives at DigitalCommons@EMU. It has been accepted for inclusion in Alumni News by an authorized administrator of DigitalCommons@EMU. For more information, please contact lib-ir@emich.edu.

EASTERN MICHIGAN UNIVERSITY **CONNECTION**

June/July 1997

A Magazine for Alumni and Friends



**Clinton's Cabinet Members
Grace Commencement '97**

Contents

Featured Articles

- Alumni Take Home Top Awards 2
- Secretary of State Office Goes Green and White 5
- EMU's Star Faculty Celebrated 7
- Entrepreneurial Bug Snags McClory, Moore 12

Departments

- Commentary 1
- University 5
- Athletics 14
- Reflections 16
- Alumni News 18
- Class Notes 21
- Alumni Events Calendar 24
- Alumni Chapters Inside back cover

On the Cover

EMU alumnus and U.S. Secretary of Transportation Rodney E. Slater (left) introduced Gene B. Sperling, assistant to President Clinton for economic policy and director of the National Economic Council in Washington, D.C., who delivered the commencement address at Bowen Field House. (See pg. 10.)

Cover and inside photos by Dick Schwarze. Sheila Brown, student photographer, also contributed to this issue.

CONNECTION

is produced for alumni and friends of Eastern Michigan University by the Offices of Alumni Relations, Public Information and University Publications

Volume 6, Number 6

The Alumni Association

Board of Directors

Melonic B. Colaianne, '83, '94, president
W. Fred Roberts, '56, '68, president elect
Joan Colladay, '72, past president
David Artley, '72, parliamentarian
Allen T. Sheffield, '88, treasurer
Anson Abraham, student representative
Dennis M. Beagen, '66
John Chambers, '76, '80
Carolyn Embree, '69, '71
Carlos Falcon, '68, '70
Eric Forster, '91
Charles Halash, '84
Sheryl James, '73, '74
Annette Sabo Johnson, '94
Denise Kaercher, '88
William Malcolm, '77
Roy McCalister, '77
Marvin H. McKinney, '65, '67, '68, '77
Robert Oliver, '67, '69
Melissa Oostmeyer, '95
Ralph Pasola, '71, '77, '86
Ralph C. Patterson, '57
Linda Randolph, '83, '89
Cynthia Van Pelt, '78

Catherine M. Canzonetta, '79, director
Vicki Reaume, '91, '96, assistant director
Lisa N. Goodwin, administrative assistant II
Beulah M. Lane, senior secretary

Executive Officers

William E. Shelton, president
Ronald W. Collins, provost and vice president
for academic affairs
Patrick J. Doyle, '92, vice president for business
and finance and treasurer to the board of
regents
Courtney O. McAnuff, vice president for
enrollment services
Juanita M. Reid, '75, vice president for
university relations
Laurence N. Smith, vice president for university
marketing and student affairs

Board of Regents

Philip Incarnati, '76, '82, chair
Gayle P. Thomas, vice chair
Robert A. DeMattia
Rosalind Griffin
Michael G. Morris '69, '73
Carl D. Pursell, '57, '62, Hon. '80
William J. Stephens, '60

Editorial Committee

Dana Aymond
Sharon Collins
Lisa N. Goodwin
Emily Griffin
Mary Motherwell
Lee Reed
Linda Rider
Ina Martin Rexford
Kathleen D. Tinney



Commentary



On behalf of The Alumni Association's Board of Directors, I extend warm greetings.

The Board met in retreat recently for the purpose of evaluating its bylaws and structure. A number of changes were proposed that will help to ensure broader, more diverse representation and provide interested alumni with a greater opportunity to be more actively involved with the University. Watch future issues of *Connection* to learn more about these opportunities.

Please note the "readership survey" in this issue. The Office for Alumni Relations wants to be sure it is providing you, our alumni and friends, with meaningful and timely information, regarding activities at Eastern. I hope you'll take just a few moments to provide us with your thoughts. Your input will help us to better serve the needs and interests of our rapidly growing base of alumni and friends.

This issue of *Connection* has provided a perfect opportunity for Eastern Michigan University to highlight a broad range of individuals receiving recognition for their accomplishments, and we're extremely proud of them all.

Have a wonderful summer!



Melonie B. Colaianne

Melonie B. Colaianne, '83, '94, President
The Alumni Association

P.S. Remember to renew your membership in The Alumni Association. Yearly dues increase from \$25 per year to \$30 per year effective July 1—so renew your membership today!

Alumni Take Home Top Awards

by Linda Rider, public information



Walter G. Brown

It's been said that an education may not totally prepare you for the "real world." Add real life experience to that and the result can equal extraordinary success as this year's alumni award winners exemplify.

They've spent years honing their professional skills and expanding their visions of focused, dedicated work. But, on May 10, seven Eastern Michigan alumni set aside their busy lives to be honored by The Alumni Association at its 36th Annual Alumni Awards Dinner. While each of the select group is unique in his or her expression of excellence and have different fields of expertise, they have one common bond: Eastern Michigan University.

Held at the Eagle Crest Conference Resort, the alumni were welcomed by peers, Alumni Association representatives and University officials. They were lauded with praise for their outstanding accomplishments and dedication to professional achievement, service to the University and involvement in their communities.

The alumni awards went to Dr. Walter G. Brown, director of the Northville Psychiatric Hospital in Northville; brothers Jeffrey L. Dwoskin, vice president of creative, and Jonathan Dwoskin, vice president of sales and marketing, for Online Marketing Company in Southfield; Dr. Elliot B. Glicksman, professor of law at the Thomas M. Cooley Law School in Lansing; Tim McIntyre, vice president of corporate communications for Domino's Pizza, Inc., in Ann Arbor; Dr. John W. Porter, former EMU president and chief executive officer of the Urban Education Alliance, Inc., in Ann Arbor; and Dr. Jaclynn Rogers Tracy, assistant professor in EMU's Department of Leadership and Counseling in the College of Education.

Distinguished Alumni Award

The Distinguished Alumni Awards are given to graduates of 25 years or more who

have achieved extraordinary distinction in their fields, demonstrated community service and shown continued interest in the University.

Walter G. Brown, '60, is director of the Northville Psychiatric Hospital in Northville. In addition, he is a lecturer in EMU's Psychology Department and adjunct professor of Oakland Community College and the University of Michigan School of Nursing. While a student at EMU, Brown was a four-year letter winner and captain of the 1957 football team. He is a member of EMU's Alumni Association and a strong supporter of the University's athletic teams. Brown is chair of the Citizens for Detroit Police Residency project and a member of the New Detroit Human Services Committee, the Metro Youth Advisory Committee and the Detroit Chapter of the NAACP. He served as director of the Michigan Department of Mental Health's Bureau of Mental Health Facilities for Children and Adults and as director of its Mental Health Metropolitan Region. Brown is co-author of *Images, Tensions of Communications*, and *Immediate Outcomes of Substance Abuse Treatment within a State Psychiatric Hospital*. He received his master's degree in education and a doctoral degree from Wayne State University.

Elliot B. Glicksman, '64, is a law professor at Cooley Law School. He has been a guest lecturer at EMU and helps Lansing area alumni attend EMU sports events. He is a resident faculty member of the Michigan Judicial Institute and a visiting resident faculty member to the National Judicial College at the University of Nevada. Included in a staggering list of contributions to the fields of legal and social sciences are visiting resident status with the National Judicial College, research fellow at the University of Birmingham, England, and an array of exceptional lectureships. His professional affiliations include the Michigan Bar



Elliot B. Glicksman

Association; the Federal District Court; the Ingham County Bar Association; the Association of Trial Lawyers of America; and the American Society of International Law. He earned his master's degree in education at Wayne State University and his juris doctorate from the University of Detroit.

Alumni Achievement Award

The Alumni Achievement Award is given to graduates of 10 or more years who have achieved distinction in their fields and shown continued support of the University.

Tim McIntyre, '85, is vice president of corporate communications at Domino's Pizza, Inc. He has been responsible for placing numerous EMU student interns at the company and has facilitated equipment donations and supplies to Eastern Michigan's Student Media program. McIntyre has served on the University Student Media Board since 1989 providing leadership, professional mentoring and teaching. He is involved in a project to formalize a network of alumni who are professional communicators for the University. While a communications major at EMU, he was the first student to serve two full terms as editor of the *Eastern Echo*. Under his leadership, the *Echo* achieved national recognition by being named an All-American newspaper and earning five marks of distinction for four consecutive semesters. McIntyre joined Domino's Pizza in 1985, was promoted to executive editor in 1989, and to national director of communications in 1990. In 1992 his responsibilities were expanded to include public relations when he assumed responsibility for all communications functions for the international, multi-billion dollar corporation.

Jaclynn Rogers Tracy, '74, '78, '79, is an assistant professor in EMU's Department of Leadership and Counseling in the College of Education. She has dedicated her career

to the development of school and community relations and has earned state and national recognition as a result of her efforts. While pursuing her academic degrees, Tracy served as community school coordinator for the Bedford Public Schools and as director of community education for the Chelsea School District. While in Chelsea, she led an effort to bring an adult education program, a senior citizen program and a licensed early childhood education program to the community, which continue to thrive. More recently, she has played an integral role in the development of a distance doctoral program in northern Michigan in educational leadership and continues to work toward bringing educational services to the marketplace. Tracy serves as director of the Center for Community Education and coordinator of graduate advising for on-campus students in Flint and Detroit. She is actively involved in statewide community education and as a part of that effort was involved in developing a leadership academy for community education professionals. She authored and co-authored numerous publications including *Gaining Support for your School: Strategies for Community Involvement*. Tracy earned her doctoral degree in adult and continuing education from Michigan State University in 1989.

Outstanding Young Alumni Award

The Dwoskin brothers, Jeffrey and Jonathan, each received the Outstanding Young Alumni Award given to graduates of less than 10 years who have been honored by their peers or otherwise recognized for excellence in their fields.

They were recognized for their success as entrepreneurs and leaders in the Detroit Metropolitan area. Jeffrey, '92, oversees the creative aspects of client projects, from design to implementation, for Online Marketing Company in Southfield. Jonathan, '95,



Tim McIntyre



Jaclynn Rogers Tracy



Jeffrey Dwoskin

heads up Online's sales force and serves as account manager and strategic planner for the company's clients. Online Marketing is billed as the largest company in Michigan that is purely devoted to the Internet market, specifically in creating, constructing and maintaining Web sites. The company was founded by the Dwoskins and childhood friend, Scott Segal.

Both Jeffrey and Jonathan are founders and members of the Great Lakes Interactive Marketing Association and the Michigan Internet Marketing Association. They are actively involved in the Holocaust Memorial Center, the Motor City Music Awards Foundation, Yes, A Positive Network and serve as members of the board of directors and founders of the Young Adult Congregation of Temple Israel. Jonathan serves on the advisory board for EMU's Bruce T. Halle Library.

Dr. John W. Porter Distinguished Service Award

The Dr. John W. Porter Distinguished Service Award was established in 1987 to recognize individuals who have made outstanding contributions to EMU and its alumni association. The Association deemed it fitting to honor Dr. Porter with the award that bears his name on its tenth anniversary.

Porter, '75H, served as EMU's president from 1979 to 1989. During his tenure, he led the stabilization of enrollment effort, the creation of the College of Technology, the construction of the student recreation center, the establishment of the budget management control system, and the campus maintenance and beautification program. However, the two most important contributions to the continued success of the University were "the establishment of the doctorate in Educational Leadership and the development of the concept of contract

learning," according to Porter. He is the chief executive officer of the Urban Education Alliance, Inc. and serves as senior adviser to the president of the National Board for Professional Teaching Standards. Following his retirement from EMU, he was the interim general superintendent for the Detroit Public Schools. Porter has held national posts by appointment from four U.S. presidents and has published many books and articles relating to education. He has served on several state and national commissions and advisory boards, including the National Commission on Manpower Policy and the National Advisory Council on Social Security. He has received numerous outstanding citizen awards and several honorary doctorates. Porter's recent awards include being elected to the Michigan Education Hall of Fame, the Distinguished Service Award of the Tuskegee Airmen, Inc., the Michigan State Chamber of Commerce Distinguished Service and Leadership Award and the Ypsilanti Area Chamber of Commerce Distinguished Service Award.

Dr. Porter earned his bachelor of arts degree in political science from Albion College in 1953, a master of arts degree in counseling and guidance from Michigan State University (MSU) in 1957, and a Ph.D. degree in higher education administration from MSU in 1962.



Jonathan Dwoskin



John W. Porter

Secretary of State Office Goes Green and White

All around the State of Michigan, Secretary of State offices are beginning to show their colors—college colors, that is, of the nearest public university campus.

The newest Secretary of State office in Ypsilanti on Washtenaw Avenue consolidates the former Ypsilanti office on Michigan Avenue with the former east Ann Arbor office on Carpenter Road.

The new office opened for business April 18 and was dedicated May 12 by Secretary of State Candice S. Miller and EMU President William E. Shelton. University, alumni and community leaders were invited to attend the grand opening ceremonies.

The decor of the new office is definitely Eastern Michigan, from the block "E" in the green carpeting to the "E" flag to the color photos on the walls and the pompoms decorating the counters. There is no doubt you are in Eagle territory.

The Ypsilanti office was the second Secretary of State office in the state to open featuring collegiate colors. The first was in East Lansing, decorated in Michigan State

University's green and white. Other collegiate colors offices will be in Hudsonville and Grand Rapids (Grand Valley State's blue, white and black); west Ann Arbor (The University of Michigan's maize and blue); northeast Pontiac (Oakland University's black and gold); Hancock (Michigan Technological University's gold and silver); Mt. Pleasant (Central Michigan's maroon and gold); and Big Rapids (Ferris State's maroon and gold).

"Previously, all Secretary of State offices had to be red and black," explained R. Dee Woell, assistant public affairs director for the Michigan Department of State, "but Secretary Miller wants the offices to be a part of the community they serve." While the collegiate decorations cannot exceed the state's budget for the renovations, the universities may opt to supplement the budget to achieve the desired decor.



Gary Vandermade, '90, takes care of business at the new Secretary of State office in Ypsilanti. Many EMU photographs decorate the walls including this image of Brian Tolbert during last year's EMU vs. University of Connecticut basketball game at the NCAA tournament.

"We were very pleased to have this opportunity to partner with the State of Michigan in creating the new branch office," said Juanita M. Reid, vice president for University Relations. "I commend the Secretary of State's office for reaching out in a meaningful way to the communities it serves."

The new Ypsilanti office is one of the biggest and presents an entirely new concept for Secretary of State branch offices. It will have a separate area for auto dealers, which will remove them from the primary flow of traffic, offering 24-hour access through a drop box. There will be a new configuration of counters with more computer terminals served by a super-server to achieve greater efficiency. Requests for license tabs and plates can be faxed or dropped off in the drop box with a two-day response anticipated. This summer, it is hoped that a touch-tone telephone ordering system will be piloted.

"We are encouraging people not to come to the branch offices," said Woell, "but when they do come, we want the environment to be inviting. Our concept is to provide all services faster in a more ergonomic, technological setting."



The new Secretary of State office is reaching out to the community it serves by sporting a huge block "E" in the green and white carpet.

Griffin Named to Regent Post

Rosalind Griffin, M.D., a psychiatrist in private practice and medical director for Sinai Hospital's Hearing Impaired Professional Services in Detroit, was appointed to the Eastern Michigan University Board of Regents by Gov. John Engler Feb. 26.

She replaces Anthony Derezinski, of Ann Arbor, for a term expiring Dec. 31, 2004. Derezinski's term expired Dec. 31, 1996.

In a press release issued by the Governor's Office, Engler said, "Eastern Michigan is gaining an exceptional individual in Rosalind. Her knowledge and experience will be a great asset for the Board."

Griffin, of Bloomfield Hills, earned a bachelor of arts degree in English literature in 1972 and a doctor of medicine degree in 1977, from Wayne State University in Detroit. She also has taken course work toward certification in American Sign Language from Madonna University in Livonia.

She serves as a clinical assistant professor at the Wayne State University School of Medicine and is a national examiner for the American Board of Psychiatry and Neurology.

Griffin is a member of the American Psychiatric Association, the American Medical Association, the American Academy of Psychiatry and the Law, the Michigan Psychiatric Society, the Detroit Medical Society, Black Psychiatrists of America and the National Medical Association. In 1994, she was awarded an American Psychiatric Association Fellowship.



WEMU

by Mary Motherwell, marketing and development

News Staff Receive AP Awards

Congratulations to WEMU's news staff who picked up three awards and an honorable mention at the 1996 Associated Press (AP) Broadcast Awards Non-Commercial Division. Reporter Leoneda Inge took first place honors in the "Best Hard News" category for her feature on the Ku Klux Klan rally and counter demonstration which took place in Ann Arbor June 22, 1996. WEMU was also awarded first place for "Best Live Sports" for the broadcast of EMU's NCAA Tournament victory over Duke March 12, 1996, with play-by-play announcer John Fountain and color analyst David Frickman. The station also was honored for being one of the top ten contributors to AP in 1996 and WEMU was awarded an honorable mention in the "Hard News" category for coverage of President Clinton's Oct. 30 speech at Bowen Field House. News Director Clark Smith and reporters Leoneda Inge and David Frickman contributed to the piece.

WEMU Selected as Weather Alert Source

Spring is here at last and that means that the possibility of severe weather increases. Early this year, WEMU was selected to be the primary source for the new Emergency Alert System (EAS) for the Washtenaw/Lenawee County Operational area. The EAS relies on a hierarchy of organizations and broadcast outlets to relay important local emergency and weather-related information to other organizations. WEMU was selected because its signal reaches all other stations in the designated area and operates 24 hours per day. As the area's primary station, WEMU is contacted by the appropriate authority to pass along important information to either or both counties' radio, television, and cable operators. The warnings are computer-generated and automatically interrupt programming when activated. All other stations are then obligated to report the information within 15 minutes.

Summer Festival Schedules

Spring turns into summer and that means WEMU will be packing up equipment and hitting the festival circuit. Look for WEMU at the Ann Arbor Summer Festival June 20-July 13, the Frog Island Festival June 20-21, the Ann Arbor Art Fairs July 16-19, the Ypsilanti Heritage Festival August 15-17, the Montreux Detroit Festival Aug. 29-Sept. 1, and the Ann Arbor Blues and Jazz Festival Sept. 5-7. We'll see you there!



EMU's Star Faculty Celebrated at 20th Annual Event

Four faculty members received the Distinguished Faculty Award, March 19, in the Hoyt Conference Center. Professor George Bird, communication and theatre arts, received the award for service to the University; Dr. Frank Jones, interdisciplinary technology, accepted the scholarly/creative activity award; and Dr. Joanne Caniglia, mathematics, and Dr. Patricia Pokay, teacher education, won teaching awards.

The following are excerpts from Focus EMU, the University's faculty and staff newsletter.

Professor George Bird

In 1955, George Bird decided to accept an invitation to come to Ypsilanti from William Work, EMU's first theatre director.

That invitation turned out to be Bird's flight into more than four decades of commitment to EMU's technical theatre program he now calls "my baby."

"We didn't have much," said Bird. "But the thing that we did have was a group of students who really wanted to work and learn. They were what I liked about this place."

Bird has since designed and helped implement 13 new theatre courses at EMU.

"His contributions in the classroom have had a major impact on many of us going through the program at Eastern Michigan," said former EMU faculty member and alumnus Joe Misiewicz, '70. "Many of us gathered around Professor Bird for direction and advice. He was a wonderful mentor."

Quirk Theatre was based on sketches that Bird provided to EMU President Eugene Elliott in 1957 and Bird's fondest memory became the opening of Quirk in February 1958.



(From left) Award winners Patricia Pokay, Frank Jones, Joanne Caniglia and George Bird

The production of *The Devil's Disciple* in 1996 marked the 56th show Bird directed. He has designed, constructed, provided lights, sound and props, and struck a phenomenal 225 productions during his career.

In addition to keeping "theatre hours" for more than 40 years and doing what assistant technical director John Charles says to be "the work of at least three people," he has served on every major departmental committee.

As for a favorite set or show he has worked on at EMU?

"They're all my favorite," he said. "The most important play I've ever done is the one I'm working on right now."

Dr. Joanne Caniglia

Stand in the doorway of Professor Joanne Caniglia's office and you'll learn a lot about how she teaches.

There are shelves filled with books with titles such as *I Hate Mathematics*, *Two Ways to Count to Ten* and Shel Silverstein's *Where the Sidewalk Ends*.

There is also a bucket in front of her desk that has bottles of soap bubbles.

"My worst fear is to have students not like math and when they close their own classroom doors as teachers, decide to give little time and literal explanations to math," Caniglia said.

Caniglia's goal is to make mathematics meaningful to her students. In fact, she intentionally creates a "disequal librium." In other words, as soon as her students think they truly understand a concept, she changes their perspective and forces them to look at the problem in a different way.

Part of Caniglia's teaching also incorporates children's literature. She said children love to read Shel Silverstein because he looks at the world through children's eyes. She uses hands-on methods, like the bubbles for her geometry class, to show her students methods they can use in their own classrooms.

And she doesn't have to wait to see how her students are doing. Caniglia

not only requires field work and/or service-learning in her classes, but attends the outings herself.

One project her students worked on during the winter semester was problem solving online. Her students put math problems on a Web site for elementary students to look up. The students answered the problems and e-mailed their solutions to the Web site. The students and their "teachers" got together for a cyberpicnic in the real world at the end of the semester. "I love teaching at EMU, especially in this department," Caniglia said.

Dr. Frank Jones

There was a time in the career of Professor Frank N. Jones when "going to the mall" meant a walking tour of the parking lot.

When you're one of the world's foremost specialists in polymers and coatings, what could be more intriguing than looking at paint baking on parked cars?

Those days are gone now, replaced by new opportunities for him as director of EMU's Coatings Research Center. A chemist and author, Jones has 100 publications to his credit but considers his landmark two-book series on coatings, co-authored with Z. W. Wickes and S. P. Pappas, as his most important professional contribution.

Organic Coatings: Science and Technology is a systematic reference book and self-teaching tool that has become the standard in the industry.

"Science is not as intimidating as it seems," Jones said. "People don't go into science to get rich. It offers an intellectual challenge and a pleasant way of life."

Jones, who called his career "a continuum," spent 20 years in the paint

industry before entering teaching.

The National Science Foundation Industry/University Cooperative Research Center in Coatings was established at EMU in 1990. EMU is in partnership with Michigan Molecular Institute, which affiliated in 1991, and North Dakota State University, which joined in 1995.

Jones' activities are a collaborative effort with EMU's Emissions Evaluation Center and EMU's Coatings Research Institute.

"Our information spreads electronically now," Jones explained. "I've got an e-mail right now from Germany requesting a test on something. I have worked with experts in Germany, France, Japan and China recently. My business associates are my e-mail buddies around the world."

Dr. Patricia Pokay

Dr. Patricia Pokay knows that it's easy to get caught up in trying to figure out what professors want in order to get a good grade.

As a professor of education at EMU for the last nine years and an expert at assessment, it didn't take Pokay long to figure out that if she eliminated that guesswork, the field of learning would be more level for her students and they could concentrate on learning.

"Students need to know what your expectations are," said Pokay. "They shouldn't have to guess what will be on a test or how a project will be graded."

Clear expectations is one of four aspects in Pokay's teaching philosophy. Another concerns the need for students to be active in their own learning as well as the need for variety in classroom activities and assessments.

"Different people learn in differ-

ent ways. The more it gets mixed up, the more (students) you're likely to reach," said Pokay. "Besides that, the classroom is more fun when the activities aren't the same day after day."

And the best way to tell if a teacher is reaching the students is by assessment, the final ingredient of Pokay's teaching method.

Assessments give students constructive feedback on their strengths and weaknesses and help them focus on not only what they learn, but how they are learning. Pokay also utilizes assessments when she asks students to give her feedback and suggestions on her own teaching.

Pokay says that when one of her students writes an evaluation and uses the phrase, "She practices what she preaches," it lets her know they are getting the message.

Seeing Double

If you are getting duplicate copies of *Connection*, or other alumni publications, please send the mailing labels to the Office for Alumni Relations, 13 Welch Hall, Eastern Michigan University 48197 or fax copies of the labels to 313/487-7009.

The Best of the Best

Two distinguished faculty members and two outstanding students were honored by the Michigan Association of Governing Boards of State Universities (MAGB) during its 16th Annual Awards Convocation April 8 in Lansing.



Donald Buckeye



Bette Warren

EMU mathematics professors Donald Buckeye and Bette Warren were honored with MAGB's 1997 Distinguished Faculty Awards. Students Nicole Francis and Dean Kramer received the 1997 Outstanding Students Awards during ceremonies at the Kellogg Center at Michigan State University. The awards represent EMU's "best of the best."

Professor Donald Buckeye has been teaching mathematics at EMU for 29 years and was EMU's first professor to introduce computers into the classroom. He was co-author of "Modeling with Technology in the Mathematics Classroom," a proposal which tied for first place in the Provost Technology Competition. As an educator of prospective and in-service elementary and secondary school teachers, Buckeye uses methodologies such as cooperative group work and hands-on experiments with concrete manipulatives to emphasize learning to his students. He received EMU's Distinguished Faculty Award in 1995.

Professor Bette Warren joined EMU's Department of Mathematics in 1984. A long-time member of the Faculty Council, she is the only person to serve three terms as president and two terms as vice president. Under her leadership the council became a more viable organization through initiatives such as: input on above-base budget requests, improved communication, and the implementation of the council's diversity goals. She chairs two of the council's standing committees. Warren has written the mathematics section of the Presidential Scholarship examination since its inception and has served on the Undergraduate Symposium planning committee since 1984. In addition, she is adviser of the actuarial program. Warren received EMU's Distinguished Faculty Award in 1995.

Nicole Francis plans to become an attorney specializing in representing the underclass. She has worked as a congressional intern in the office of Rep. Sherrod Brown, D-Ohio, and is interested in becoming an elected representative in the future. Nicole is a member of the University Honors Program, majoring in political science and Spanish with a grade point average of 3.5. She has distinguished herself for two semesters in an honors undergraduate assistantship researching the role of Medicaid on Michigan. Francis has received numerous scholarships and is a member of the Golden Key National Honor Society. She has served as a student tele-counseling admissions representative, helping high school students with college selection, has been a delegate to the National Black Student Leadership Development conference and a co-chair

of the executive committee of the Young African American Professionals Leadership conference. Francis has served as a member of many student boards.

Dean Kramer hopes to begin teaching in elementary school physical education or in chemistry at the secondary school level following graduation. He has a grade point average of 3.9 with a major in physical education and a minor in chemistry. Kramer has received the EMU Campus Leader Award for the past four years and the Michigan Association for Health, Physical Education, Recreation and Dance has recognized his academic ability with its student honor award. He has received a Regents Scholarship for four years and recently was named Eastern's physical education major of the year. He has been treasurer of the Student Physical Education Organization and is a member of the American Alliance for Health, Physical Education, Recreation and Dance. Kramer coaches youth sports, including soccer and baseball.

Thirty faculty members and students, two from each of Michigan's 15 public universities, were honored during the event. They received MAGB recognition certificates, congratulatory letters from Gov. John Engler and House-Senate tributes from the Michigan Legislature.



Dean Kramer, Nicole Francis

Two Members of Clinton's Cabinet Grace Commencement '97

U.S. Secretary of Transportation Rodney E. Slater joined Gene B. Sperling, President Clinton's top economic adviser, during EMU's commencement ceremonies Sunday, April 27, at Bowen Field House.

Slater, a 1977 graduate of Eastern Michigan University, returned to his alma mater to introduce Sperling during morning commencement ceremonies for 1,200 graduates of the College of Arts and Sciences. Sperling also presented the commencement address for the 1,200 graduates of Eastern Michigan's colleges of business, education, health and human services and technology that afternoon.



Rodney E. Slater, '77, '96H, returned to his alma mater to introduce keynote speaker Gene B. Sperling.

Both Slater and Sperling have ties to the Ypsilanti/Ann Arbor area. Slater, a star tailback for the EMU football team from 1973 to 1976, and a member of University's 1977 national championship forensics team, was presented an honorary doctor of public service degree in 1996. Sperling is a native of Ann Arbor and a 1977 graduate of Ann Arbor's Community High School. He was presented an honorary doctorate of public administration during commencement ceremonies.

Slater was appointed secretary of transportation in February. Prior to becoming

secretary, Slater was the administrator of the Federal Highway Administration, serving as its first African-American administrator and the nineteenth overall chief highway executive in the country's history.

Sperling is assistant to President Clinton for economic policy and director of the National Economic



Keynote speaker Gene B. Sperling presented the commencement address to 2,400 EMU graduates.

Council, a post he was named to in December. As director of the NEC, he coordinates the development of the president's economic agenda. Currently, he is spearheading the president's drive for a balanced budget that protects critical investments for the future in education, training and the environment.



EMU President William E. Shelton presided at commencement ceremonies.



Three generations of the Oxley family have now graduated from EMU. Here to help celebrate Julie Oxley's graduation are her parents Edward Oxley, '70, '76, and Cheryl Oxley, '70, along with Julie's fiance, Jamie Mossburg, '97. Edward's parents, Grace Oxley, '64, and Charles Oxley, '42, are EMU graduates as well.

A Partnership for Success

by Nancy Mida, '72

When the boxes are unpacked in July, it will complete the final phase of a long-term plan designed to enhance opportunities to increase private support for the benefit of Eastern Michigan University.

With Eastern Michigan University Foundation operations consolidated in the Darrell Cooper Building on the western edge of campus, the structure of the Foundation will be complete. The total operation will encompass gifts and records processing, development, asset management, finance and administration.

The process began in 1990 with the approval of the Foundation's Strategic Action Plan, and was formalized in 1995 with a joint operating agreement approved by the EMU Board of Regents and the Foundation Board of Trustees. Under the agreement, the EMU Foundation was given responsibility for stewardship of gifts received, management of the endowment fund, entrepreneurial activities, and increasing private support for the University. Specifics included transferring the endowment fund to the EMU Foundation, a private non-profit 501(c)(3) charitable organization. Also outlined was consolidation of fund-raising operations, to be completed by July 1, 1997.

"This final outcome represents a team effort to optimize private support," said Roy E. Wilbanks, president of the EMU

Foundation. "Now, we are ready to move toward our goal of expanding the endowment fund to \$30 million by the year 1999-2000, the University's Sesquicentennial."

The move coincides with the successful completion of the Campaign for Scholars, the most ambitious fund-raising initiative undertaken to date. At press time, the campaign had surpassed its \$16 million stretch goal, with gifts directed to benefit academic programs at EMU.

The EMU Foundation is governed by an independent Board of Trustees that elects its own officers. The full board meets semi-annually, and has active committees that monitor Foundation investments, marketing, fund-raising and administration. The Foundation solicits private funds; however, annual fund-raising priorities are established by the University's Board of Regents.

"Private support is crucial to the University. Gifts from individuals and corporations will help Eastern

Michigan University continue its fine tradition in higher education," said EMU President William E. Shelton.

Once fund-raising priorities are set, the staff plans its strategy. Fund raising is accomplished in a variety of ways including personal contact, the annual Faculty/Staff Campaign, phonathons and direct mail. In 1995-96, more than half of all gifts came from EMU alumni, with other individuals, corporations, foundations and organizations comprising the balance.

"Directing gifts to the University through the Foundation will ensure comprehensive donor records, and accurate and timely stewardship of gifts," Wilbanks added.

For more information about the EMU Foundation, or about how to direct your gifts, please contact: Roy Wilbanks, president, at 313/484-1322, or Carey Jernigan, executive director, at 313/484-1322.



The EMU Foundation will consolidate operations in July at the Darrell H. Cooper Building, located at 2000 Huron River Drive.

Entrepreneurial Bug Snags McClory, Moore

by Linda Rider, public information

Two west coast-based alumni are turning the computer into their own entrepreneurial adventure.

Equipped with more than a decade and a half of diverse professional experiences, Daniel McClory, '81, '82, and Keith Moore, '82, '84, teamed up in 1995 to create NetWorX New Media, Inc., based in San Juan Capistrano, California. That same year, McClory sold his software manufacturing company in Italy and Moore bid farewell to a thriving computer software publishing company where he was director and CEO. It was a time when both had reached a crossroad in their professional lives—a time the former EMU roommates were both looking for new worlds to conquer.

"Dan and I had both been exposed to a number of different multi-media companies and felt there would be a chance to help others get their technologies to market," said Moore. Using their talents in financial management, operational structuring and marketing, their start-up investment company ushers on-line, interactive companies to a position of profit and growth.

Although there is an overlap in their interaction with the technology, their roles in the company are clear cut with Moore handling the operations and finance and McClory, the marketing and sales.

"In our first year we looked at more than 30 different situations and selected six that had promise and warranted follow up," said McClory. "Now we spend the bulk of our attention on three."

Those include an on-line virtual trade show, using video and audio technologies to hold Webcasts in support of conferences and seminars

(<http://www.vbc.com>); an on-line music magazine that allows the browser to preview songs from CDs and albums and interviews with performers (<http://www.popi.com>); and a company that creates multi-media versions of high school yearbooks (<http://www.cdromyearbook.com>).

Both partners hold ownership positions in the companies. "Our motivation is equity," said McClory.

Although each went his separate way after graduation, they stayed in touch throughout the years. McClory began his career with Ford Motor Company in Los Angeles as a result of a connection he made with a Ford executive during a student-led tour of the EMU campus. When he left Ford in 1985, he had progressed to field sales manager for Ford's top-selling metro Los Angeles zone. McClory spent the next five years as a financial consultant with the CIGNA Corporation where he held licenses in securities, insurance and tax-advantaged investments. From 1990 to 1995, he served as the founder and president of Industrial Technologies Italia, one of Europe's largest independent software manufacturing firms.

In 1984, Moore began his career consulting for Arktronics Corporation, a start-up software company in Ann Arbor. He joined the company as controller and was promoted to vice president of finance. Along with

two other Arktronics principals, he started International Consumer Technologies Corporation (ICT), a contract software development company, where he provided leadership and structure for the organization in the areas of accounting, finance, production, human resources and administration. The Disc Company (TDC) was created to market and distribute ICT's products. He relocated the company's headquarters to Los Angeles and in 1989 spent six months in Paris, France, where he started and staffed TDC's European operations.

Their outstanding careers were recognized by The Alumni Association with Young Alumnus Awards—Moore in 1991 and McClory in 1992.

Working toward common goals is not new to McClory and Moore.



Dan McClory with wife, Lori (former EMU student), and children Pierce, age 9, Shaye, 2, and six-year-old Grant.

While students at EMU, both were dedicated track and cross-country team members. Each were multiple varsity letter winners and each found that running cross-country

had a huge impact on how they conduct their lives.

"Dan and Keith were both solid team members," said Robert Parks, who continues to coach track and

and graduate student in Language and International Trade. He was the recipient of Campus Leader Awards, was a Barton Graduate Scholar, was named to the Dean's

List for five years and was a sports writer for the *Eastern Echo* and the *Ypsilanti Press*. He credits those experiences as the cornerstone of his success today.

"At the core of everything are written and oral communication skills," said McClory. "If you can read, write and talk well, it can get you anywhere. And those pressures of deadlines turned out to be helpful and applicable in the real

came later in life. Through McClory, Moore got to know Smith better and now often turns to him for guidance and direction. "Larry has influenced my decision-making in my professional career and is the only person that I can define as my mentor and close friend. Now that Dan and I are working together, we often bounce ideas off Larry."

Moore, a six-time varsity letter winner in track and cross-country while at EMU, also considers Coach Parks as an important influence in his life. "He is such a dedicated guy. He taught me about focus, discipline and being passionate on a competitive level," he said.

Today, Moore and McClory often start out their day at 6:00 a.m. running together, thinking through their plans for the week and creating new worlds to conquer. They built NetWorX with little experience and involvement with the Web or Internet. Now in the heart of it, guiding others' technologies to the marketplace, they continue to build on their knowledge through experience, research and voracious reading. Their lives continue to be a learning process.

"One of the reasons we keep running is because in distance training you really have to maintain discipline and focus to achieve your goal," said Moore. "Those same issues apply in the corporate world. Business is not a sprint. It's a long haul."

Keith Moore with wife, Roberta, and children three-year-old Emily and Alex, age two.

cross-country at Eastern Michigan. "I use them as examples of success when I recruit."

McClory won eight varsity letters in track and cross-country and became the University's first three-year captain of its NCAA Division I Cross Country Team since 1923—a remarkable feat considering he didn't run cross-country before coming to EMU.

"The programs at EMU have always been national caliber programs," said McClory. "By being plunged into an environment where others on the team were much better than me was an incredible opportunity. Because of Bob Parks and his coaching philosophy, I was able to reach my potential and contribute."

During McClory's years as an undergraduate student in English

world after graduation."

Another real world experience McClory remembers at Eastern Michigan came from what he calls an unforgettable experience in the University Ambassadors Society, created under the leadership of Laurence N. Smith, vice president of university marketing and student affairs, to get student leaders involved in recruitment efforts and marketing.

"Larry Smith has been and continues to be a very influential person in my life," said McClory. "He represented the bridge from the theoretical learning environment to the practical business environment for me. Having that blend of realism was great. It was like working in the real world while in college."

Moore's interaction with Smith

EMU Football Set to Rebound in 1997

Rick Rasnick is looking forward to a healthy 1997 football season.



Head Coach Rick Rasnick

After leading the 1995 EMU football team to a 6-5 overall record that included 43 school records, the injury bug hit the Eagles hard in 1996. The season looked promising with the return of All-Mid-American Conference quarterback Charlie Batch but the record-wrecking signal caller went down in the second game of the year, and did not return. Other injuries forced Rasnick and staff into playing nine "true" freshmen and a host of newcomers and the results were a 3-8 record. Rasnick is now calling on a whopping total of 48 lettermen, including a healthy Batch, to return the EMU football program to its winning ways.

Perhaps the most significant change in '97 will be the fact that the Eagles can call on two experienced quarterbacks to run the

show—Batch and Walt Church. Despite playing just 21 games for the Green and White, Batch is second in several EMU career offensive categories.

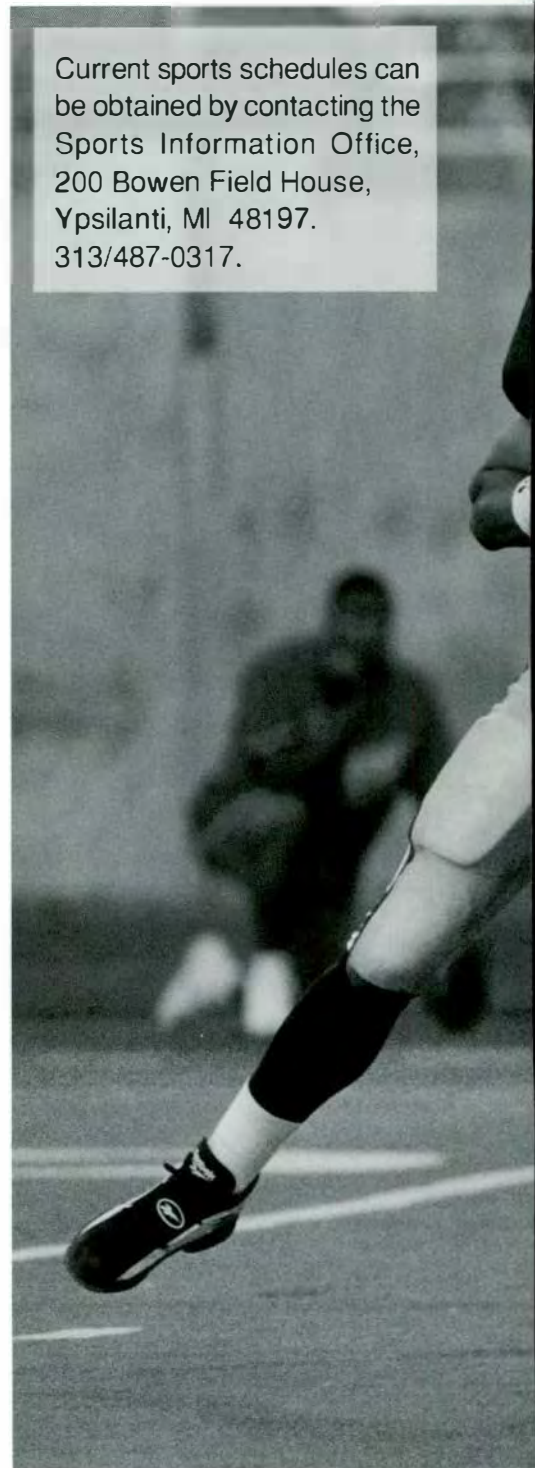
Church stepped in last year when Batch went down and responded with a superb effort. He was up to the task of running the show, starting the last nine games of the season and earning Co-Freshman of the Year honors in the MAC.

The rest of the offense will be in good shape as a total of 28 lettermen return, including eight starters from '96. The offensive backfield will be virtually intact with the return of the top two tailbacks, Mike Scott and Savon Edwards, and fullback Mark Crnkovic. The offensive line returns four starters from last year, including bookend tackles L.J. Shelton and Brian Wilcox. The receiving corps lost top receiver Ontario Pryor but will return tight end Pat Laughlin and wide outs Ta-if Kumasi, Kei Juan Douglas, Kenny Christian and Brandon Campbell.

The place-kicking duties will be in order with the return of two-time letterman Justin Ventura, an honorable mention All-MAC pick in '96.

Defensively, the Eagles will be strong with 20 lettermen returning, including seven starters. First-team All-MAC nose guard Lionel Dalton returns after ranking fifth in the league in tackles for loss. Honorable mention All-MAC outside linebacker Avery Brown has been a dominant player for three full seasons, playing in all 33 games and starting 24 times.

Current sports schedules can be obtained by contacting the Sports Information Office, 200 Bowen Field House, Ypsilanti, MI 48197. 313/487-0317.



1995 All-Mid-American Conference quarterback

EMU and Michigan to Meet on the Gridiron



It has been 67 years since Eastern Michigan and the University of Michigan have met in a football game but that will end in 1998 when the two schools meet on the gridiron.

EMU Director of Athletics Tim Weiser and University of Michigan Director of Athletics Joe Roberson have agreed to a game in the 1998 season either Aug. 28 or Sept. 19.

"We have had a tremendous working relationship with Joe Roberson and the University of Michigan and we are grateful to them for scheduling Eastern Michigan during the 1998 foot-

ball season," EMU's Weiser said of the upcoming football game. "In addition, Mid-American Conference Commissioner Jerry Ippoliti has provided support in reworking our schedule so that we could add a team like Michigan to our schedule."

The EMU and Michigan varsity football teams played twice, in 1930 and 1931, with the Wolverines winning both contests. Michigan won the first meeting 7-0 Sept. 27, 1930, before 78,247 fans in Ann Arbor. The two teams played again in 1931, with Michigan recording a 34-0 victory Oct. 3.

1997 FOOTBALL SCHEDULE

- Sept. 6 at Missouri
- Sept. 13 at Toledo *
- Sept. 20 KENT *
(HALL OF FAME)
- Sept. 27 at Central Michigan *
- Oct. 4 OHIO *
(HOMECOMING/FAMILY DAY)
- Oct. 11 BALL STATE *
(BAND DAY)
- Oct. 18 AKRON *
- Oct. 25 at Marshall *
- Nov. 1 WESTERN MICHIGAN *
- Nov. 8 at Northern Illinois *
- Nov. 15 at Central Florida

*Mid-American Conference Game

Take Note . . .

For the first time in MAC history, the 1997 race will feature two divisions with the addition of Marshall and Northern Illinois into the football race. EMU will compete in a division with Toledo, Western Michigan, Central Michigan, Northern Illinois and Ball State. The other division will consist of Akron, Bowling Green, Kent, Marshall, Miami and Ohio. The division champions will meet in the first-ever MAC playoff game Dec. 5 in Huntington, West Virginia, hosted by Marshall University. The winner of that game will be the MAC representative at the inaugural Motor City Bowl Dec. 26 at the Silverdome in Pontiac.

Earlie Batch will return for the 1997 season.

Reflections

by Sberyl James, '73, '74

I am at an age when I have begun to assess regrets. I am lucky – I have very few. But among them is my relative inactivity as an EMU student.

Well, let's be honest: I wasn't active at all.

I knew there was a student government; I don't remember voting for officers or attending meetings. I knew there was a campus newspaper; I wrote only two articles for it. I am not sure I knew there were clubs and organizations, other than sororities and fraternities. The latter held no interest for me. The former I probably would have bypassed, for no particular reason.

In my recent interactions on campus, I have learned just how many worthwhile organizations exist on campus, how much students can learn about community involvement – and leadership.

That is exactly what motivates the newest chapter of The Alumni Association of Eastern Michigan University.

Members of this unique group call themselves the Leadership Alumni Chapter. Their description and goals are simple – and, for me, a bit humbling.

The chapter "promotes the idea," its bylaws state, "that we should take on a challenge of leadership in our lives. Whether it's done by getting involved in our community, running for office, doing the best we can at our jobs, the raising of children with positive attitudes, or setting a good example for those around us; there are thousands of ways to make the



world and the membership better by promoting communication, cooperation and building excitement."

Members of this chapter include students who have: joined student organizations or clubs, held office, volunteered time, attended meetings, maintained

an above average grade point, won scholarships, belonged to fraternities or sororities, participated in sports or groups supporting athletics.

In short, says Jim Carpenter, chapter president, "people who took on that little extra thing when they were in college, who decided to get involved and make the world a little bit better. Those are the people we're trying to tap into, and have fun doing it."

Carpenter is a good example. A 1994 graduate with a public administration degree, he works now for Ameritech New Media in Livonia as a customer consultant.

As a student, he was student body president, resident hall president, "and lots of other things."

Another member, Ted Maxfield, was chief justice of the student court (I never even knew there was a student court), he was also a student advocate for the new library.

Reva Carpenter, Jim's wife, was a student senator and member of Delta Zeta Sorority.

There are about 20 other members who make up this launch group. One day, Carpenter says, they were sitting around talking about what really bound them as a group.

"We thought and thought," he says. "It wasn't region, we're not out trying to restore logos, it wasn't majors, what is it? What do we all care about in college?"

"We care about making things better."

What makes this chapter especially important, I think, is that most EMU students are like I was and not like Carpenter. Less than three percent of the student body voted in student government elections this past spring. Someone needs to emphasize the idea that the sooner you get involved, the more effective you will be in your career, your community and your personal life.

It took a while to get the chapter off the ground, but the Alumni Board officially accepted it in April. Carpenter says the chapter will have a big meeting in June to elect new officers and plan events.

The Board has been delighted with the concept and the enthusiasm of this group. I don't know how many other colleges have an alumni group dedicated to getting students and recent grads to focus on giving back.

I hope the glue that holds this group together lasts. What may help is that their leadership instincts are only part of what makes them a great new EMU chapter.

The group's other obvious commonality is EMU. "We all love Eastern," Carpenter says. Everyone should stay involved – if not with this chapter, than another, he adds.

"Keep in touch with Eastern. It's a great school."

Well, on that criteria, I'm a shoe-in.

CONNECTION Readership Survey

June/July 1997

Dear Alumni and Friends:

We are interested in hearing your ideas about our alumni publication. Please take a few minutes to complete this short questionnaire. Thank you in advance for your response.

Please check one response for each question.

1. How often do you read the publication?
- | | |
|--------------------------------------|--------------------------------------------|
| <input type="checkbox"/> Every issue | <input type="checkbox"/> Every other issue |
| <input type="checkbox"/> Some issues | <input type="checkbox"/> Rarely read it |
2. The overall appearance of *Connection* is:
- | | |
|------------------------------------|-------------------------------|
| <input type="checkbox"/> Excellent | <input type="checkbox"/> Good |
| <input type="checkbox"/> Fair | <input type="checkbox"/> Poor |
3. I find *Connection*: ☐ Very interesting ☐ Somewhat interesting ☐ Not at all interesting
4. I receive *Connection* during the first week of the publication month:
- | | | | |
|------------------------------------|--------------------------------|---------------------------------|--------------------------------|
| <input type="checkbox"/> Regularly | <input type="checkbox"/> Often | <input type="checkbox"/> Seldom | <input type="checkbox"/> Never |
|------------------------------------|--------------------------------|---------------------------------|--------------------------------|
5. How would you rate *Connection* as an information source about the following?
- | | | | |
|-----------------------------------|----------------------------------------|--------------------------------------------|-----------------------------------|
| Alumni and Alumni Events? | <input type="checkbox"/> Very Valuable | <input type="checkbox"/> Somewhat valuable | <input type="checkbox"/> No value |
| Athletics? | <input type="checkbox"/> Very Valuable | <input type="checkbox"/> Somewhat valuable | <input type="checkbox"/> No value |
| Higher Education Issues? | <input type="checkbox"/> Very Valuable | <input type="checkbox"/> Somewhat valuable | <input type="checkbox"/> No value |
| Information about the University? | <input type="checkbox"/> Very Valuable | <input type="checkbox"/> Somewhat valuable | <input type="checkbox"/> No value |
6. What kinds of articles or sections are you most likely to read?
- _____
- _____
7. What kinds of articles or sections are you least likely to read?
- _____
- _____
8. What would you like to read that is not now available?
- _____
- _____
9. Did you graduate from Eastern Michigan University? ☐ Yes ☐ No
- If yes, please respond to question 10. If not, thank you for participating. Please send your completed survey to the address below.
10. Fill in the following blanks with appropriate information regarding your years at Eastern Michigan University:
- | | | |
|--------------|---------------|------------|
| _____ degree | _____ college | _____ year |
| _____ degree | _____ college | _____ year |

Return survey to:

EMU Office for Alumni Relations, Survey Response,
13 Welch Hall, Ypsilanti, MI 48197 or fax to 313/487-7009

Alumni Office Hits the Road

San Diego, California

Alumni and friends gathered in San Diego, Calif., March 20. It was the first alumni event planned in that area. Local resident Alan Jesiel volunteered to help develop a San Diego Alumni Chapter. If you are interested in more information regarding the chapter, contact Alan at 619/469-8280.



Jeanine (Janing), '51, Bill Bussey and Alan Jesiel discuss plans for the alumni chapter.



Brian Keliber, '84, and Rick Bolton, '74, smile for the camera.

Alan Jesiel, '88, and his wife, Sharon, display their loyalty and pride for EMU.



Marian Bliznik, '71, '76, '90, shares EMU memories with Robert Freeland, '42, and his wife, June.



Some attendees at the Phoenix alumni event gathered for a photograph. Pictured below: Judge R. Gerald Barr, '75, his wife Kay, Kurt Jacobowitz-Cain '75, '81, Eunice Prusak, '76, Curtis Erck and EMU Vice President Juanita M. Reid, '75.



Phoenix, Arizona

Friday, March 21, EMU President William E. Shelton was the guest speaker at an alumni and friends gathering in Phoenix, Ariz. President Shelton spoke about "Ethics in Athletics" and gave a brief update about the wonderful things happening at Eastern Michigan. Robert Rudy, '66, '67, graciously volunteered to help coordinate the development of a Phoenix Alumni Chapter and is looking for help and some creative programming ideas. To get involved in Phoenix and maintain ties with EMU, call Vicki at 313/487-0250.



Pictured (from left) are Mary Beth Smith Toomey, '70, Jim Moors, '74, Rodney Slater, '77, '96H, Beverly Farley and Michael Toomey.

Washington, D.C.

The EMU National Capital Alumni Chapter gathered Sunday, Feb. 23, at the Washington Bullets vs. Detroit Pistons basketball game in Landover, Maryland. After the game, local Washington D.C. area alumni attended a post-game reception featuring guest speaker Juanita M. Reid, EMU Vice President for University Relations. EMU graduate and newly appointed U.S. Secretary of Transportation Rodney Slater made an appearance at the event. To get in touch with other alumni in the greater Washington D.C. area, contact Jim Moors, National Capital Chapter President, at 703/448-5824.



EMU Regent Col. William Stephens, '60, was the founding father of the National Capital Alumni Chapter. Pictured above is Stephens with current president Jim Moors, '74.

Debbie Penrose, '80 (far right) enjoys the event with her friends Carl and Darlene Ackerman.



Mike Beckish, '75, attended the event with his sons Jimmy and Marty.



(From left) Alumni Association Board member Denise Kaercher, '88, traveled to Washington to visit with her college friends, Tracy (Varker) Casleberry, '86, and Mary (Miller) Davis, '87.



Chapter Happenings

Alumni Association Welcomes New Leadership Alumni Chapter

At the April 12 Alumni Association Board of Directors meeting, the Leadership Alumni Chapter was chartered as an official chapter of The Alumni Association of Eastern Michigan University. The energetic group has numerous programming efforts planned, including a new Web page, which is already online (<http://members.aol.com/voyagerjrd/LEADERSHIP.html>). To get involved, contact James Carpenter at 313/699-2901.

FORE-Kensington Valley

The Kensington Valley Alumni Chapter will host its "Best of the Best" Golf Open Saturday, June 7, at 10 a.m. at the Eagle Crest Golf Club. To register, contact Chay Halash at 810/344-0188.

Accounting Alumni Open

The Accounting Alumni Chapter will be hosting its Accounting Alumni Chapter Golf Outing Friday, June 27, at the Eagle Crest Golf Club (formerly known as the Huron Golf Club). A shotgun start is scheduled for 1 p.m. and is limited to the first 72 people who sign up.

"Our first outing was a huge success and we are hoping to increase interest and participation in our chapter," said Barb (Busovicki) Kaufman, chapter president. "This outing is the perfect opportunity to renew friendships and make new friends."

The cost of the golf outing is \$55 per person and includes nine holes of golf, cart, awards and dinner. Contact the Accounting Office at 313/487-3320 to reserve your spot.



Alumni gathered last year for the first Accounting Alumni Chapter golf outing, which attracted more than 15 corporate sponsors. (From left) Professor and accounting department head Tom Cianciolo, Mike Grundman, '93, Doug Kelly, '94, and Wayne Nunez, '94.

Hall of Fame Banquet Set

The 1997 E-Club Hall of Fame Banquet will be held Saturday, Sept. 20, at 1 p.m. in the McKenny Union Ballroom. This year's honorees are: Dr. Walter Brown (football), Ed Engle (football and basketball), Glenn Gulliver (baseball), Earle Higgins (basketball), Duane Root (track), Eugene Thomas (track), and Claudia Wasik (tennis/volleyball). In addition to being inducted at the banquet, the honorees will be honored at halftime of the EMU vs. Kent football game. At press time, the game was scheduled to kick off at 6 p.m. To reserve a seat at the banquet, contact the Alumni Office at 313/487-0250.

Searching for EMU Alumni . . .

Plans for a directory of all Eastern Michigan University alumni are being finalized.

The new directory will include the most up-to-date information currently on file in the Office for Alumni Relations and will be based on whether or not alumni wish to be included in the directory. However, we need your help.

There are several alumni who, for one reason or another, are not in our database. If you know someone who has not been in touch with the University in several years, please take time to call them and encourage them to call the Office for Alumni Relations at 313/487-0250 to ensure that they are in our database.

Soon all alumni with accurate addresses will receive a questionnaire asking that information be verified which will be included in the directory. Alumni will be given the opportunity to indicate that they do not wish to be included in the directory.

Watch for more information and directory details in upcoming issues of *Connection*.

Class Notes

by Maeve K. Sullivan, '98

30s

M. Paula Madigan, '36, and her husband, Charles, recently celebrated their fiftieth wedding anniversary. The Madigans live in Livonia.

40s

Jack E. Hansma, '40, of Waco, Tex., has retired from a teaching career that spanned more than 50 years. Hansma introduced undergraduate and graduate health education programs at the Universities of Northern Colorado, Arizona, Sacramento State, and Baylor University. He served as director of the Denver Crippled Children Society and the Tuberculosis Society, and as an active member or consultant to numerous voluntary, local, and state health departments. Hansma is active in community and political affairs, and continues to speak and write on health topics.

Robert Freeland, '42, of La Mesa, Calif., attended an alumni gathering of Edison Institute and Greenfield Village Schools faculty in Dearborn. Freeland also attended EMU Homecoming '96.

Emma Bartlett, '44, of Mason, was honored with an open house at her church in celebration of her ninetyeth birthday.

Stanley G. Richardson, '46, is the president of Acme Graphics, Inc., in Cedar Rapids, Iowa. Richardson started at the company as sales manager in 1956 and became its owner in 1988.

Richard C. Key, '49, of Fresno, Calif., retired from his 46-year career in education. Key spent more than 40 years serving in school administration.

50s

John V. Koczman, '53, '57, has retired as superintendent of schools, and Barbara A. Koczman, '66, '71, has retired as high school teacher. During their careers in education, the Koczmans worked in schools both in Michigan and in Alabama.

60s

Margaret Porter, '63, '68, '73, was a 1995-96 Fellow with the Council for Excellence in Government, a non-partisan, national organization dedicated to improving the performance of government. Former Presidents Bush, Carter, and Ford serve as honorary co-chairs of the Council. Porter, who is on the staff of the Office of the Secretary, has served the Department of Health and Human Services since 1980. She now leads strategic and performance planning with the Departmental Appeals Board and serves on the Alternative Dispute Resolution Team.

Donald R. Bradley, '65, '70, was named high school and middle school principal in the Gobles Public Schools in Gobles, Mich. Previously, Bradley spent three years as the principal of Milton Junior and Senior High School in Vermont, after which he served as principal of Crestview High School in Indiana. Bradley also has served on committees to develop standards for the certification of Indiana middle school teachers.

Lenora Payne, '65, of Sandusky, recently celebrated her 100th birthday. Payne, who taught fifth and sixth grades in the Carsonville-Port Sanilac district for 26 years, founded the Sanilac Township Library in 1936. She retired in the early 1970s.

Tom Tobias, '66, of Ypsilanti, teaches a combined third/fourth grade class at Estabrook Elementary School in the Ypsilanti Public Schools. A biographical sketch about Tobias will appear in the Marquis publications *Who's Who in America* and *Who's Who in the World*.

70s

Artemis Alex, '70, '76, teaches computerized accounting at Ypsilanti High School.

Joseph A. Blythe, '71, '76, of Battle Creek, was appointed principal of Albion High School.

Ron Callison, '71, '74, was chosen by the Michigan Department of Education to travel to Scotland in the Michigan Teachers Exchange Program during June and July. Callison will be among 20 Michigan teachers who will live and teach with host teachers in various Scottish cities.

Arthur Naranjo, '76, was elected treasurer of the 1997 Illinois Special Olympics Board of Directors. In 1996, Naranjo served on the board's finance and auditing committee. He is manager of corporate finance of Ameritech, vice president and chief financial officer for Ameritech Capital Funding, and treasurer for the Ameritech Foundation. Naranjo also is a member of the U.S. Hispanic Chamber of Commerce.

John C. Gawlas, '77, was appointed marketing services manager for King Engineering Corp. in Ann Arbor. Gawlas joined the company as supervisor of technical services in 1985.



Michael J. Gerou, '79, was elected president of the Canton Chamber of Commerce. Gerou is a self-employed attorney in Plymouth.



80s

Paul D. McGraw, '80, Marine Maj., graduated from the College of Naval Command and Staff at the Naval War College in Newport, R.I. McGraw joined the Marine Corps in 1980.

Christina (Hover) Tabaczka, '81, is a case manager at the HIV/AIDS Resource Center in Ypsilanti. Tabaczka, who also is a certified public accountant, recently completed her master's degree in social work at the University of Michigan.



Duane Denison, '84, of Chicago, is the guitarist for Jesus Lizard, the alternative rock quartet that has toured with such bands as Ministry and Rage Against the Machine. The band has played at recent Lollapalooza festivals.

Douglas R. Kelly, '87, of Novi, has joined the law firm of Howard & Howard at its Bloomfield Hills office. Kelly served as a law clerk to the Honorable Conrad L. Mallett, Jr., of the Michigan Supreme Court and was an adjunct professor at the University of Detroit Mercy School of Law. He is a former executive editor of *The University of Detroit Law Review*. Kelly was admitted to the Michigan bar in 1994 and to the United States District Court, Western District of Michigan, in 1995.



Kevin Behmer, '88, teaches secondary mathematics at Huron High School in Ann Arbor, where he also serves as head coach of women's track and field and as an assistant football coach. Behmer, who is in his ninth year of teaching, has taught at the school for more than six years.

LaRoy Williams, '89, was promoted to manager of Follmer, Rudzewicz and Co, P.C. at its Southfield office. Previously, Williams served as senior accountant for the firm, where he has worked since 1990.



90s

Mary F. Nosbisch, '90, teaches eighth and ninth grade English in Manchester.

Gretchen Rynearson, '90, of Saginaw, teaches seventh grade English and journalism in the Bridgeport-Spaulling Community Schools.

Joan L. Witte, '91, joined the marketing communications and public relations company of Lovio-George Inc. as a senior



account executive. Previously, Witte was vice president of marketing for Pippin Publishing Ltd., and also served as director of public relations for Credit Counseling Centers, Inc. Witte developed and wrote a guide for successful community relations for AT&T Universal Card.

Alicia M. Gibson, '92, accepted a position in the administrative offices of Colonial Pipeline in Atlanta, Ga. Previously, Gibson served for three years on the Atlanta Committee for the Olympic Games.

Kathleen Kryza, '92, is the author of *How to Cook with Your Mate . . . and I Don't Mean in the Kitchen! Recipes for Romancing*. Kryza has been on radio talk shows throughout the country. The book was published in April 1996 and is now in its third printing.

Arthur L. Hampton, III, '93, of Jackson, is employed in the purchasing and production planning department of Tetra Pak Hoyer.

Nancy Wolfe, '94, is an assistant professor of art and design at Adrian College, where she previously served as part-time instructor.

Nickolas Manych, '55, '60, died April 10 at his home. While at Eastern Michigan University, he was a star athlete in basketball, football and baseball. A football All-Conference selection for three years, he also captained the football team during his senior year at EMU and was drafted by the Baltimore Colts after receiving his bachelor of arts degree in 1955. Manych was inducted into the EMU Athletic Hall of Fame in 1993 and the Greater Flint Area Sports Hall of Fame in 1995. He served as director of the Michigan Open Basketball Tournament for 20 years and was also a recent vice president of the EMU E-Club Alumni Chapter. Individuals desiring to make contributions to the Nick Manych Memorial Scholarship Fund at Eastern Michigan University may do so by contacting the EMU Foundation, attn: Steve Quinlan, 11 Welch Hall, Ypsilanti, MI 48197, or call 313/487-0252.



Nicki Esakov, '95, of Megadore, Ohio, was hired as a fourth grade teacher at Green Intermediate School in Uniontown, Ohio.

Monique A. Lake, '95, is a tax assistant in the accounting department of AT&T Capital Corp. in Bloomfield Hills.

Konata Otuome, '95, is a representative at GLS Communications, Inc., in Lathrup Village. Otuome, who is a member of the Black Alumni Chapter, was accepted to Howard University's law class of 1999.

Marriage

Melissa M. Winter, '95, and Frederick Coen

Engagements

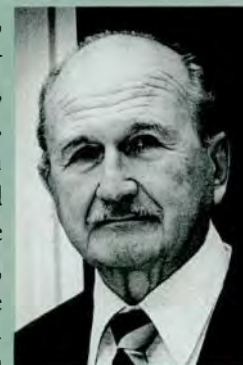
Barry Craig LaRue, '80, and Kimberly Diane Clarke

Anne Marie Nicoll, '87, and Gordon Bradley Turner, '92

In Memoriam

John R. Francis, '27
Eugenia N. Shirtliff, '30
Edward J. Engle, '39
Elihue B. Potts, '44
Douglas Cullin, '47
Richard A. Schaab, '49
William Leo Symons, '49, '75
Gertrude Ann (Merkel) Mennick, '50
Marietta Jean (Lohmiller) Rich, '50
Robert E. Rowland, '55
Lorraine Brandon, '57
William M. Dunavin, '57
Keith Earl Fenton, '58, '66, '69
William Little Green, Jr., '58, '65
Marjorie B. (Hawkins) Wahr, '58
Elizabeth S. Warren, '63
Joan (Ralston) Monte, '64, '72
John Michael Cline, '70
Fonie E. Butler, '71, '78
Richard E. Cross, '73
Emma A. (Allen) Sands, '75
Martin Frank Petelka, '81

Dr. Charles William Cogar, '44, died Aug. 29, 1996, at his home. He completed his pre-med studies at Eastern Michigan University, where his uncle, Jennings Hickman, was his toughest professor. He earned his doctor of medicine degree from Wayne State University in Detroit. Cogar dedicated his life to medicine following his own experience with polio as a small child. As a young doctor, Cogar joined his brothers Bob and Jack during the Korean War. He commanded a MASH-type medical unit for the Strategic Air command, located in Britain. Cogar's storied career was highlighted by his part in establishing the Alexian Brothers Hospital when it opened in 1965.



News About You

Awards, civic activities, promotions, marriages, births and other events that are an important part of your life are also important to us and your fellow alumni. News will be published in *Connection* as soon as space permits. We always appreciate receiving photos to run with the class notes. The best reproduction results are achieved from black and white glossy head shots.

Full Name _____

Address _____

City/State/Zip _____

☐ Check here if new

Phone _____

E-mail address _____

Student I.D. number _____

Degree(s) and year(s) _____

Place of employment and location _____

Position/title _____

Is this a promotion? A new employer? _____

Spouse's name (if alum) _____

Degree(s) and year(s) _____

Significant news about spouse _____

My news (please attach a separate sheet if necessary) _____

Please send address changes or news for *Connection* to:

Office for Alumni Relations
13 Welch Hall
Ypsilanti, MI 48197

For your convenience, you also may e-mail your news to us at:

alumni.relations@emich.edu
or FAX 313/487-7009.

■ Events

June '97

- 7 Kensington Valley Alumni Chapter "Best of the Best" Golf Outing, Eagle Crest Golf Club (see page 20 for details)
- 12 Denver, Colorado—Outreach, Westin Hotel—Tabor Center, 6:30-8:30 p.m.
- 14 Annual Meeting of the Members, The Alumni Association, Hoyt Conference Center, 10 a.m.

August '97

TBA Traverse City, Michigan—Outreach

September '97

- 6 Tailgate—EMU vs. University of Missouri Football, Columbia
- 20 The 1997 E-Club Hall of Fame Banquet/Game

October '97

- 3 James R. Applegate Golf Tournament
- 4 Homecoming/Family Day

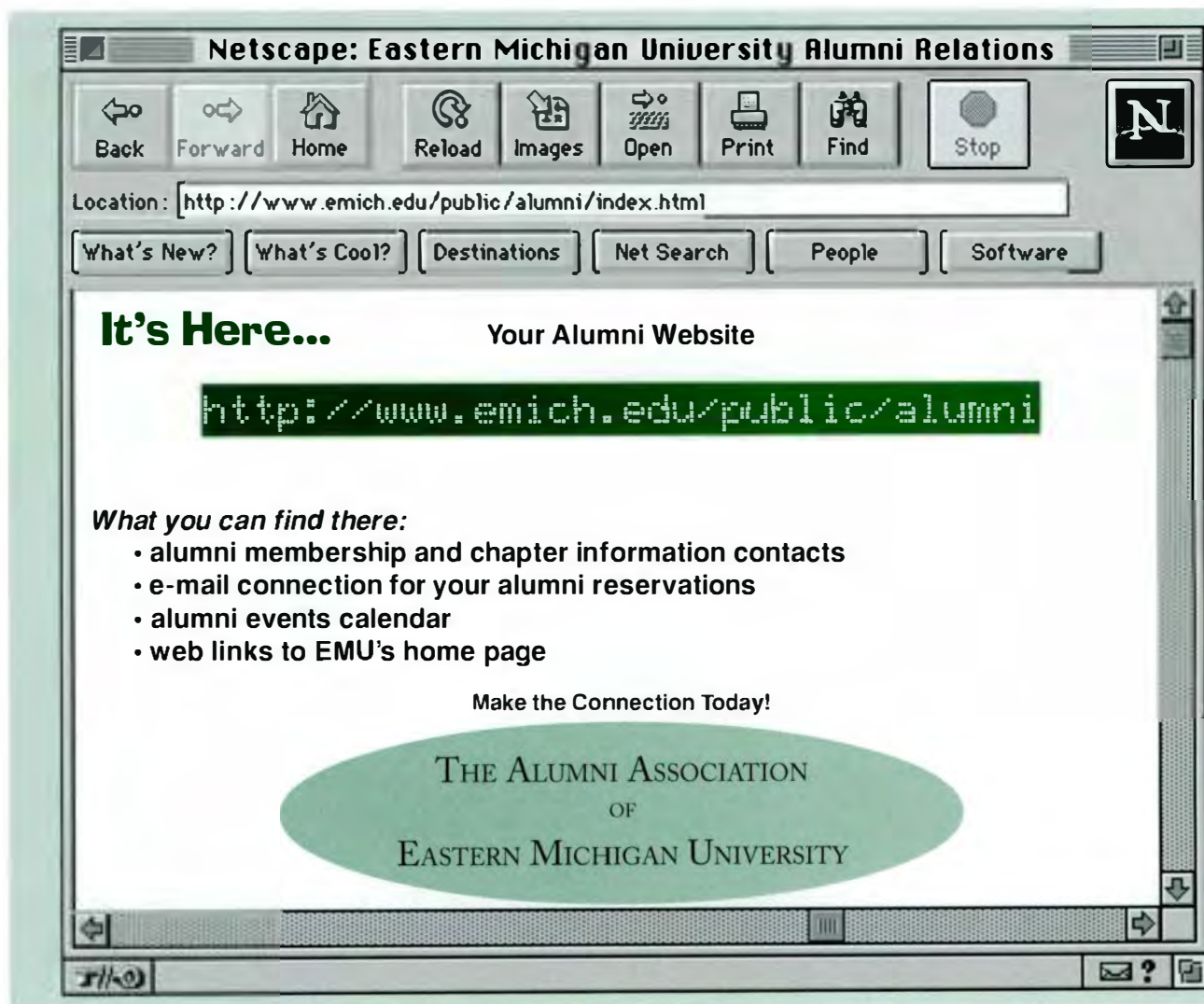
November '97

- 8 Tailgate—EMU vs. Northern Illinois University Football at DeKalb
- 15 Tailgate—EMU vs. University of Central Florida Football at Orlando

January '98

30-31 WinterFest '98/Beaux Arts Ball

For more details on alumni activities, call the Office for Alumni Relations at 313/487-0250 or 800/825-8664, or email: alumni.relations@emich.edu



Alumni Chapters

The Alumni Association of Eastern Michigan University has recognized chapters in-state as well as out-of-state. These chapters hold their own special interest events and activities in addition to those of The Alumni Association. Some also require chapter dues that will not be included in your \$25 annual association dues. If you don't see a group in your area and would like to start your own local chapter, we would be happy to assist you. Please call Vicki Reaume, '91, at the Office for Alumni Relations on our toll free line 800/825-8664, fax 313/487-7009 or e-mail vicki.reaume@emich.edu for further information. Listed below are current chapters that have been chartered by The Alumni Association. Chapter contacts are needed for the following alumni chapters: Flint, ORIS, Boca Raton, Fort Myers and St. Petersburg, Florida. If you are interested in providing leadership for these chapters, please contact the Office for Alumni Relations.

Accounting Alumni Chapter

Barb (Busovicki) Kaufman
109 Penhill
Novi, MI 48377
810/926-9695

Art Alumni Chapter

Anne Rubin
2105 Tuomy Rd.
Ann Arbor, MI 48104
313/665-8236

Black Alumni Chapter

Vanessa McDaniel
20167 Marlowe
Detroit, MI 48235
313/345-3172

Chicago Alumni Chapter

Barbara Racila
627 Citadel Dr.
Westmont, IL 60559
630/789-8890

Dallas/Ft. Worth/Metro Plex Area Alumni Chapter

Ed Chytil
1630 Novel Dr.
Garland, TX 75040
214/278-6768
FAX: 214/528-3098

E-Club Alumni Chapter

Ken Behmer
201 Chauncey Ct.
Marshall, MI 49068
616/781-7562
FAX: 616/965-4133

Huron Restoration Alumni Chapter

Debbie Ridiker Frank
42530 Schoolcraft
Plymouth, MI 48170
313/420-2534

Huron Valley Alumni Chapter

John Chambers
7650 Textile Rd.
Ypsilanti, MI 48198
313/485-7785
FAX: 313/487-7009

Kensington Valley Alumni Chapter

Dennis Flamme
3311 Watersedge Dr.
Brighton, MI 48116
810/229-8263
FAX: 313/483-0206

Leadership Alumni Chapter

James Carpenter
48691 Denton #110
Belleville, MI 48111
313/699-2901

National Capital Alumni Chapter

James A. Moors
8380 Greensboro, #1022
McLean, VA 22102
703/893-2179
FAX: 703/448-5824

Nursing Alumni Chapter

Harold Cooley
9288 Panama Ave.
Ypsilanti, MI 48198
313/483-7471

Orlando Alumni Chapter

Allen D. Fazio
12231 Bronson Way
Orlando, FL 32824
407/240-4963
FAX: 407/363-6279

San Diego Area Alumni Chapter

Alan Jesiel
6317 Lake Apopka Pl.
San Diego, CA 92119
619/469-8280

Renew Your Alumni Membership Today!

Prices will increase from \$25/year to \$30/year on July 1 for individual or joint membership.

Name: _____ Student Number: _____ Class: _____

Joint with: _____ Student Number: _____ Class: _____

Address: _____

Residence Phone: _____ Business Phone: _____

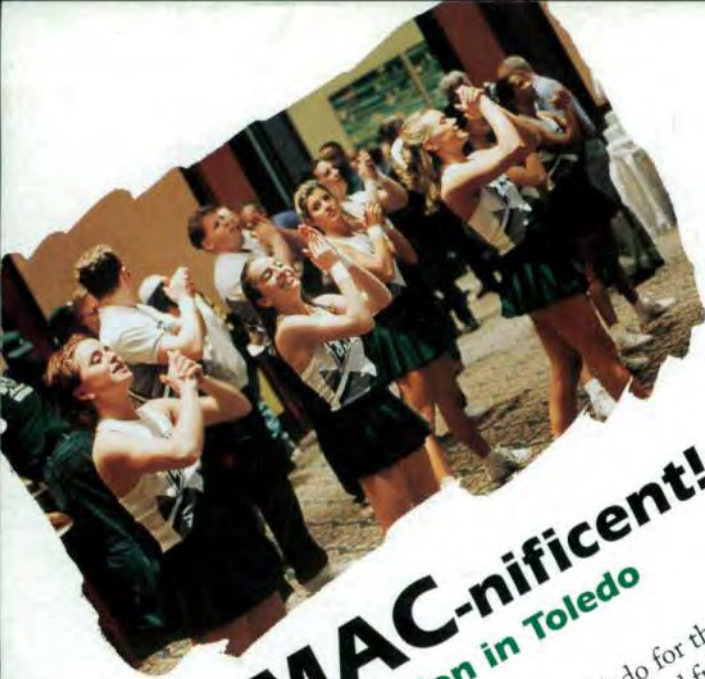
Business Name and Address: _____

Check made payable to EMU Alumni Association enclosed for: \$ _____ or

Circle one: Visa or MasterCard # _____ Exp. Date: _____

Signature as it appears on credit card: _____

Return to: EMU Office for Alumni Relations, 13 Welch Hall, Ypsilanti, MI 48197 or FAX 313/487-7009



It's **MAC-nificent!** **EMU Celebration in Toledo**

Alumni and friends gathered in Toledo for the MAC basketball tournament celebrating the success of the 1996-97 men's basketball season. First year head coach Milton Barnes was on hand to thank the crowd for their tremendous support.



OFFICE FOR ALUMNI RELATIONS
13 WELCH HALL
EASTERN MICHIGAN UNIVERSITY
YPSILANTI, MI 48197

NON-PROFIT ORG
U.S. Postage
PAID
Ann Arbor, MI
Permit No. 9

**Dated Material
Do Not Delay**