

Cover Story



Sept. 21, 2010 issue

United We Swoop: EMU's Homecoming Week packed with events, festivities

By Leah Shutes

Back to Current issue


The air is crisp. Leaves are about to change colors. And Homecoming at Eastern Michigan University is just around the corner. Whether you're alumni, students, faculty or staff, gather your friends, sport your green and white, spread your wings and fly with this year's theme, *United we Swoop."

Homecoming week activities are scheduled Sept. 24 through Oct. 2, beginning with various campus contests and culminating in the Homecoming game against Ohio University. Kick-off is at noon at Rynearson Stadium Saturday, Oct. 2.



TAKING THE FIELD: In its homecoming game, the EMU football team will take the gridiron against Ohio University Oct. 2. The contest is set for noon at Rynearson Stadium, with a number of tailgates taking place two hours prior to kick-off.

"This year's theme, 'United We Swoop,' was chosen because we wanted to emphasize the fans and their needs," said Ted Coutilish, associate vice president for University Marketing. "Taking pride in EMU is critical to our success. It helps with employee morale and school spirit, and makes the students feel better about the institution and about attending class."

Eastern Michigan students and employees are encouraged to place a static EMU decal on their vehicles for the **Brand My Ride Contest**, which began Sept. 13. Participants will be randomly selected to receive great prizes, including a brand-new iPad. Winners' names will be announced during the third quarter of the Homecoming football game and contestants must be present to win. Pick up your EMU decal at one of any of the various main campus locations.

The **Brand My Door Contest**, which begins Sept. 20, encourages those living on campus in the residential halls and apartments to decorate their doors consistent with the 2010 Homecoming theme. Judges will select the best door for prizes. Winners will be announced during the third quarter of the Homecoming football game and must be present to win.



Come one, come all to the **Homecoming Court question-and-answer session** in the Student Center Auditorium Sept. 24, 6 p.m. This is an opportunity to meet and greet the candidates for Homecoming king and queen, and support your favorites. Submit your

I CROWN THEE: Shane Kalminksi waits to receive his crown as Homecoming King 2009 while Homecoming Queen Phylcia Wilford (left) and a member of the court look on. A new king and queen will be crowned this year.

questions online and they will be answered in front of the live audience and panel of judges. Points will be awarded to the candidates, which count toward the selection of the

2010 Homecoming king and queen. In addition, come enjoy great giveaways, free pizza and more.

Head over to the Eagle Nation Station (located in the Student Center) for **Tailgate Tuesday** and get pumped for the Homecoming football game. Hang out with Swoop and your friends, try your luck with the EMU prize wheel, and enjoy T-shirt coupons and free giveaways Tuesday, Sept. 28, 11 a.m. to 1 p.m.

Eastern Michigan President Susan Martin invites all members of the EMU campus community to attend a **campus picnic** Tuesday, Sept. 28, 11:30 a.m. to 1 p.m., at the Student Center north patio.

For a little extra evening entertainment, join Dining Services for the **Commons Homecoming BBQ Dinner** Tuesday, Sept. 28, 4-8 p.m. Enjoy a traditional BBQ meal.

Campus Green and White Day is Wednesday, Sept. 29. Those spotted wearing EMU clothing will be given a prize. Watch out for the "spirit police," who will be on patrol, handing out "tickets" to those wearing non-EMU college paraphernalia. Tickets are discount coupons toward purchase of items at the REC/IM Pro Shop or the Student Center Bookstore.



TRADE YA: During the EMU T-Shirt Exchange, EMU faculty, staff and students can exchange a shirt from another university and receive an EMU shirt. The event takes place Thursday, Sept. 30, 10:30 a.m. to 2:30 p.m., in the Marshall/King mall area.

Join WKQI-FM's Mojo at the **United We Shop Block Party** Wednesday, Sept. 29, 6-8 p.m., at the Student Center Patio. Participants can collect discounts, coupons and free promotional materials. Enter contests, play Spin-to-Win and grab something from one of the giveaways.

Get pumped at the 2010 Homecoming **Pep Rally** at University Park, immediately following the Block Party. Support your team while you watch the EMU Marching Band, grab free swag, win prizes and participate in activities. Finalists for Homecoming king and queen will be announced. This event is rain or shine.



Have a T-shirt with the name of another college or university? Trade it in at the **EMU T-Shirt Exchange** and receive a free EMU shirt at the Marshall/King mall area Thursday, Sept. 30, 10:30 a.m. to 2:30 p.m.

The 10th Annual Staff Alumni Social is scheduled Thursday, Sept. 30, 11:30 a.m. to 1:30

GIVE ME AN "E": Eastern Michigan

University employees who also are alumni enjoy a cheer from EMU cheerleaders at last year's Staff Alumni Social. This year's event is scheduled Thursday, Sept. 30, 11:30 a.m. to 1:30 p.m., Student Center Ballroom.

p.m., Student Center Ballroom. Enjoy a reception with fellow staff who are EMU alumni. Reservations are required. To RSVP or for more information, call the Office

of Alumni Relations at 487-0250.

Eastern Michigan offers a **free shuttle service** to and from the 2010 Homecoming football game. Buses to Rynearson Stadium run 9:30 a.m. to noon. Pick-up locations are Sill Hall at Forest Street, the Student Center circle drive, outside the Eastern Eateries and Peninsular Place. Buses from Rynearson Stadium start running after the third quarter and continue until one hour after the game.

Alumni and friends are invited to join the **EMU Alumni "Go Green" Tailgate** Saturday, Oct. 2, 10 a.m. to noon, located at the west side of Rynearson Stadium. The event includes food, music, cheerleaders, fun activities for children and EMU giveaway items. All proceeds benefit the EMU Alumni Association Scholarship Fund. Plus, don't miss the "Chapter of the Year" announcement. For information, contact the Office for Alumni Relations at 487-0250 or e-mail alumni.relations@emich.edu.



EMU GENERATIONS: Eastern Michigan University alumni, young and old, enjoy last year's "Go Green" Tailgate. This year's party is scheduled Saturday, Oct. 2, 10 a.m. to noon, on the west side of Rynearson Stadium.

Students can visit the **Eagles Landing Fan Zone** Saturday, Oct. 2, 10 a.m. to noon. Hang out with friends and fellow fans, and enjoy activities, food, beverages and live entertainment. A game ticket or valid student ID is required for entry. The Fan Zone is located just outside Rynearson Stadium on the west lawn. Attendees are encouraged to stay for **Tailgate Town**, the pre-game student tailgate.

Watch the pre-game **Parade of Nations**, conducted by EMU's Office of International Students. The campus parade is made up of both American and international students, who carry flags representing more than 100 different countries and cultures.

Come support the Eagles as they take the gridiron against the Ohio University Bobcats at the **2010 Homecoming football game** Saturday, Oct. 2 at noon, Rynearson Stadium.

Don't miss the **Homecoming halftime show**. The homecoming king and queen will be honored, and the alumni band will present a special performance.

"Homecoming is a great opportunity to show your EMU pride, get together with friends, colleagues or fellow students, and have a lot of fun," said Coutilish.

All events are free unless otherwise noted. For a full listing of 2010 United We Swoop Homecoming week events with more details, visit www.emich.edu/homecoming.

Feature

FOCUS EMU
Online

Sept. 21, 2010 issue
**EMU, City of
 Ypsilanti join forces
 to rejuvenate
 College Place**

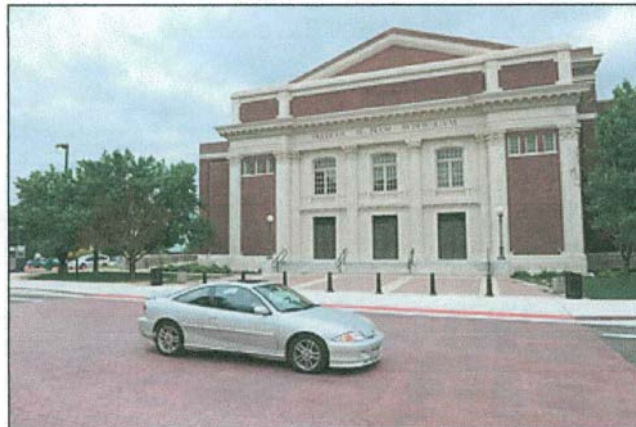
By Ward Mullens

Back to Current Issues
FOCUS EMU
Online

For the past eight years, it has been Dieter Otto's responsibility to patch the potholes on College Place, the small stretch of road in front of Pease Auditorium on the eastern edge of the Eastern Michigan University campus.

"Every year, I would have to send a dump truck over to fill the holes and it still wouldn't be enough," said Otto, director of custodial, grounds, motor pool, and waste management.

Thanks to a collaboration by Eastern Michigan University and the City of Ypsilanti, and help from a federal stimulus grant, Otto won't have to worry about College Place for years to come.



"It was in pretty bad shape," said Otto, who coordinated the project for EMU. "Now you can drive on it and it looks the way it is supposed to."

SMOOTH COMMUTE: College Place, once a ruddy, potholed road was completely rebuilt during the latter half of summer through a collaboration between EMU and the City of Ypsilanti. The road was ready in time for faculty, staff and student vehicles that frequent the thoroughfare during the fall. The road connects Forrest Street to Washtenaw Road.

College Place is the football field length of road that runs in front of Pease Auditorium. It begins where Forrest Street ends at Roosevelt Hall and intersects Cross Street, between the EMU Psychology Clinic and the Tower Inn.

Work on the \$290,000 project began three months ago. The majority of the money for the project (\$204,000) came from a federal stimulus grant. Eastern's financial responsibility amounted to approximately \$70,000, according to Otto.

"The city worked really well with us on this," said Otto.

The result is a pristine stretch of road bordered by wider sidewalks on both sides, with new crosswalks, a bike path on the west side of the street, stamped concrete in front of Pease Auditorium and along the sidewalks, and recessed parking areas on both sides of the street.

The project also includes a larger water main and a new backflow preventer, which keeps the University's water system separated from the city's water system, in case of contamination.

Otto said the toughest part of the project was a decaying water main that broke twice and had to be replaced.

The next part of the project, according to Otto, is to continue the paving down Forrest Street.

Feature

FOCUS^{EMU}
Online

Sept. 21, 2010 issue
**New "way-finding"
 Web site helps EMU
 students navigate
 campus**

By Ward Mullens

Back to Current Issues
FOCUS^{EMU}
Online

Finding your way around a new school can be a daunting task, especially if the campus encompasses more than 800 acres and 120 buildings. Add to that several major construction projects, including the two largest classroom buildings, and even a returning senior can become directionally challenged.

To help new and returning students navigate the campus as school starts, Eastern Michigan University has created a way-finding system that can help locate classrooms, parking lots, and even faculty and staff.

The Web site can be found at <http://www.emich.edu/fall2010/> or accessed directly from www.emich.edu.

"Every year, we've had a Fall Welcome website, which is targeted toward new students and visitors. That site directs them toward locations, resources, information and orientation programs," said Rhonda DeLong, director of Web communication for EMU. "The situation was different this



year. In addition to the unfamiliarity for new students, changes on campus during the summer added dimensions of complexity to way-finding on campus for returning students and faculty as well. The closure of Pray-Harrold and relocation of classrooms and offices was a big part of it, but other changes came into play, too."

GETTING DIRECTIONS: Two EMU students are pointed in the right direction on the first day of classes Sept. 8. In addition to staff helping students find the building they were looking for, a new electronic way-finding system online aids students in locating classrooms and professors on campus.

The Web site includes targeted information for new EMU students and parents, a printable campus map, an interactive campus map, directions to campus, parking solutions and classroom locations.

The site also helps locate specific departments and faculty from the College and Arts and Sciences, which have vacated Pray-Harrold so that renovation work can begin.

The site (<http://livemap.emich.edu/campuslife/>) is easy to use. Go to the link or find the link for "Campus Map: Interactive." Once there, you can use the class, person or parking icons to find what you are looking for quickly. Use the pull-down bars to locate classes or type in the name of the person you are trying to find. If you are looking for a person, you will see a similar icon appear on the map where the person's office is located.

"Making all this information available with one click increased its

accessibility and made the online navigation experience seamless," DeLong said. "The web creative manager put together an appealing Flash animation to draw attention to this information and make it easy to reach via the EMU home page."

Feature

FOCUS EMU
Online

Sept. 21, 2010 issue
**EMU's new spherical
 classroom will bring
 out the stars**

By Ward Mullens

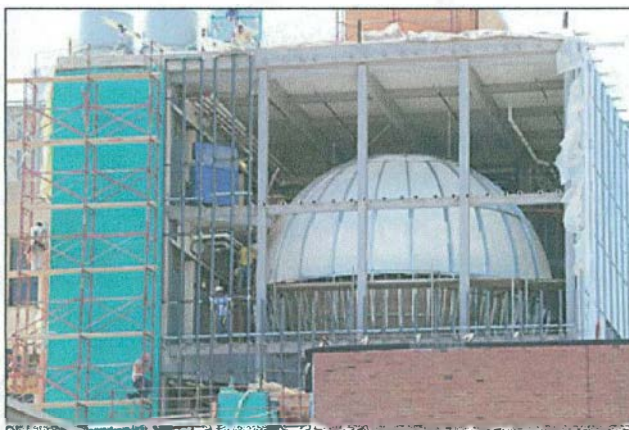
Back to Current Issues
FOCUS EMU
Online

The Eastern Michigan University Department of Astronomy and Physics is preparing to have a ball in a room that will bring out the stars.

The ball is a sphere-shaped classroom in the new science complex that will be used as a planetarium.

"We're getting a lot of questions when people walk by it," said James Carroll, head of the department of physics and astronomy, of the planet-shaped classroom taking shape on the north end of the complex.

"There will be a room inside the sphere," he said. "That room will be a classroom, a planetarium and a science education facility all rolled into one room."



The inside of the sphere will create a dome that is 28 feet in diameter and the room will feature 37 reclining seats, controlled lighting and full 360-

SCIENCE STAR: The star feature of the new \$90 million Science Complex addition is a spherical-shaped classroom that will be used for University classes Monday through Thursday, with community use planned for weekends. Essentially a round theatre, it will allow users to view celestial events and far-away worlds as if they were seeing them in the sky.

degree projection. It also will have a Smartboard, microphones and sound system, according to Carroll.

The unique design will allow audiences to view celestial events and far-away worlds as if they were actually seeing them in the sky.

"This facility is not your daddy's planetarium. There is no fixed star ball at the center," said Norbert Vance, professor of astronomy. "In fact, the term (planetarium) is rather out of favor. The room is essentially a round theatre. The system allows us to travel anywhere the software allows us to go ... the surface of Mars, in orbit around Saturn, even out among the nearby stars looking back towards our solar system."

"Plus, I don't have to concern myself with the weather," Vance said of the facility. "It can be 10 (degrees) below (zero) outside and we'll be cozy in our journeys. There is no limit to what our imaginations can develop for such a device."

The Department has raised \$55,000 so far to purchase the planetarium projector. Carroll said another \$45,000 is needed for the planetarium shows and the lighting and audio system.

"The shows alone cost about \$3,000 each," Carroll said of the pre-

packaged software the planetarium will use.

Eventually, Carroll said that he hopes EMU will produce original shows for the planetarium, partnering with departments in the College of Arts and Sciences on the production of the shows and departments in the College of Business for the marketing of the shows.

"We also want to offer more than just a planetarium to the public," Carroll said. "We want this facility to complement Sherzer Observatory."

Carroll said that few facilities in the area offer an observatory and a planetarium in the same place.

"We can pair it (the planetarium) with Sherzer Observatory and really make the experience worth the trip for school children," Carroll said. "They can learn about astronomy in the planetarium and then go to the observatory to see the real thing."

The facility also will make it worth the trip for EMU students who want to teach astronomy.

"This will give our graduates that added dimension of being prepared to use such a room," said Vance. "Some schools have closed their planetariums simply because they lacked staff with experience in operating one."

The details are still being worked out, but Carroll said that the facility would be used for classes Monday through Thursday and then for public outreach Friday through Sunday.

"It's going to be a very unique setting," Carroll said. "We are excited."

No date has been set for the opening of the EMU planetarium, but the New Science Complex is scheduled for completion this fall.

Feature

FOCUS EMU
Online

Sept. 21, 2010 issue
EMU helps local schools score extra money

By Ward Mullens

Back to Current Issue
FOCUS EMU
 Online

Eastern Michigan University (EMU) athletics is partnering with area elementary schools to create a win-win situation for Eagles football and the community.

The Education First Ticket Stimulus Program provides EMU football tickets to area schools and gives a dollar back to the school for every ticket redeemed at a home game.

"The Education First Ticket Stimulus Program is a collaborative effort designed to give young students the opportunity to experience the excitement of a collegiate environment while, at the same time, supporting the financial needs of school districts in Southeast Michigan," said Derrick Gragg, EMU's athletic director.



MEET SWOOP: Swoop receives a high five from a student at Heritage Elementary School in Saline Sept. 17. Children had the opportunity to meet Swoop in their classroom. The EMU mascot left the nest to visit five schools to help promote the Education First Ticket Stimulus Program. The program provides EMU football tickets to children in 12 school districts to provide them a college football experience. In return for attending an EMU home game, \$1 from each ticket will go to the school of the child who shows up for the game.

Ypsilanti Public Schools Superintendent Dedrick Martin said the EMU ticket stimulus program is a creative way to enjoy an afternoon of collegiate football while supporting local school districts.

"Ypsilanti Public Schools has a longstanding educational partnership with EMU and adding a new twist to the relationship is refreshing," Martin said. "I look forward to taking my family to the game and seeing the Eagles trounce the Chippewas. Go Eagles!"

Scott Schultz, director of athletics marketing at EMU, said that approximately 10,000 tickets had been given away to local schools for the Sept 18 Central Michigan game.

Participating schools include: Willow Run Community Schools, Ypsilanti Public Schools, Lincoln Consolidated Schools, Saline Area Schools, Wyandotte Schools, Romeo Community Schools, Clinton Community Schools, Manchester Community Schools, Plymouth-Canton Schools, Pinckney Community Schools, Adrian Public Schools and Allen Park Public Schools.

The tickets provided to the schools are pre-purchased by corporate sponsors such as the Pepsi Co. Each school district determines how many

tickets they want for each game. When the tickets are redeemed at the game, an electronic scanning system reads the bar code and credits the appropriate school.

Schultz said that the schools would get the money before the end of the football season.

"The idea is to help schools where budgets are tight and to help us put fans in the stands," said Schultz.

The program was not implemented for the first EMU home game against Army because area schools had not yet started classes.

Although the season has started, Schultz said that interested schools can still join the program by calling 487-5642.

Feature

FOCUS EMU
Online

Sept. 21, 2010 issue
Athletics looks for competitive edge through nutrition/training tables

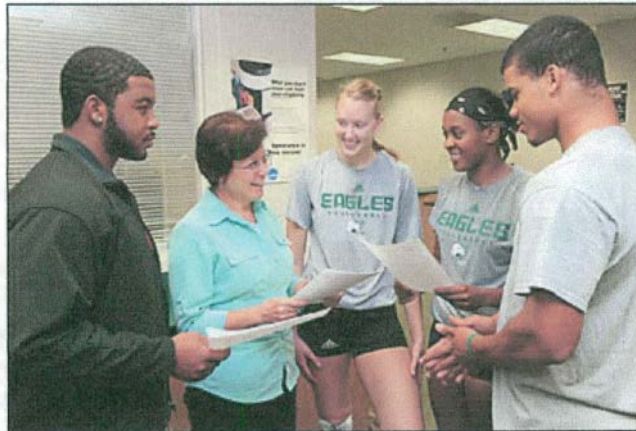
By Amy E. Whitesall

Back to Current Issue
FOCUS EMU
 Online

Left to their own devices, college athletes are prone to eat like, well, college students.

And while ordering from the value menu may get them through the day, that kind of nutrition falls short when they're trying to compete at their best.

"Typically, college kids aren't taught the skills (for maintaining a healthy diet)," said Adam Feit, Eastern Michigan University's head coach, strength and conditioning. "There's no freshman orientation that tells you, 'Here's how you survive in a dorm room.' A lot of times we'll have early or late practices, and they've got to figure out how to manage their time and their budget. ... How they perform is dictated by what they do when they're away from us."



NUTRITION TIPS: Patti Kuberski (second from left), sports dietitian for EMU Athletics, discusses proper nutrition with EMU athletes in the training room at the Convocation Center. (from left) Football player Mike Marrow, a sophomore from Toledo; volleyball players Emily Good, a senior from Ada, and Joi McKenzie, a senior from State College, Pa.; and football player Devin Paris, a sophomore from Columbus, Ind., listen. During the summer, the Board of Regents approved \$100,000 for training and nutrition tables for the football, men's and women's basketball, and women's volleyball teams.

Asked to look at ways to improve performance through nutrition, the EMU Athletics Department came up with a plan - approved by the Board of Regents last summer - to spend \$100,000 of the money generated by football guarantee games (road games against big-name opponents) on a pilot sports nutrition program. The plan includes a football training table and a nutrition station - sports performance measures that will put EMU on par with other schools in the Mid-American Conference, said Associate Athletic Director Doug Dowdy.

"We want to ensure that our student-athletes receive the proper nutrition. And the best way to do that is to provide them with meals and monitor who is eating and what they're eating while they're there," Dowdy said.

The training table provides the football team with nutritionally correct meals based on where the team is in its training. Head Football Coach Ron English said it's helped his players stay strong and maintain their weight throughout fall camp.

"It's just the way it should be if you're a college athlete competing at the Division I level," English said.

Feit works with coaches, a registered dietician and EMU Dining Services to coordinate meals and portions for the training table, which is located in the Wise room at Dining Commons One.

Every day, there are different nutritional needs. The day before a game, for example, players should eat familiar foods that are moderate in protein, high in carbohydrates and low in fat. That means dishes like chicken or steak, pasta with tomato sauce or potatoes (baked or roasted), fresh fruit and vegetables, low-fat desserts and lots of water or Gatorade.

"If you take a football game, for example, where you typically play on Saturday night, you never want your Friday night meal to be pizza, wings and soda pop," Feit said. "We'll look at where we are in our weekly plan and make sure they have the fuel to compete at the highest level."

About \$28,000 of the guarantee money is being used to stock a nutrition station, temporarily located in the Convocation Center weight room while a more permanent station is being built in an adjacent room. It allows athletes to grab chocolate milk, electrolyte replacement drinks, multivitamins, nutrition bars and a variety of fruits, nuts and whole grains immediately after their workout. The nutrition station pilot includes the four sports based at the Convocation Center — football, volleyball and men's and women's basketball. Athletes in other sports will have to pay their own freight, roughly \$9.50 a week, to participate in the tables.

With demanding academic schedules and with practice times that often conflict with typical mealtimes, athletes have ample opportunity to develop bad eating habits. By making healthy options the most convenient options, Feit and his staff are able to work with human nature instead of against it.

"Research says the longer you wait after your workout to recover the energy you've lost, the more sore you'll be," Feit said. "So, we want them to utilize it right after training."

Feit had the sometimes-tricky task of determining which foods to offer at the nutrition station. NCAA rules make it a bit more complicated than running to the grocery store for bananas and Gatorade, even if bananas and Gatorade do turn up on the menu.

NCAA bylaws, for example, dictate that recovery drinks can have no more than 30 percent of their calories from protein. Fruit, nuts and bagels are OK anytime, but trail mix may not be, because it could have bits of unapproved foods such as Chex or pretzels.

"The administration has been really supportive," Feit said. "It's good to initially take the next step toward helping these kids succeed."

Featured Photo

FOCUS EMU
Online

Sept. 21, 2010 issue



AUTOGRAPHED SHIRT: David Coverly (seated), an EMU alumnus and cartoonist of the syndicated comic "Speed Bump" gives EMU student Jana Hughes, a junior from Detroit, an autographed T-shirt. The shirt included Coverly's "Chips are Down" cartoon drawing. The autograph signing was part of "Tailgate Tuesdays" at Eagle Nation Station in the Student Center. "Tailgate Tuesdays" are designed to heighten school spirit for each of the Eagles' Saturday home games at Rynearson Stadium.

Back to
FOCUS EMU
Online

Featured Photo



Sept. 21, 2010 issue



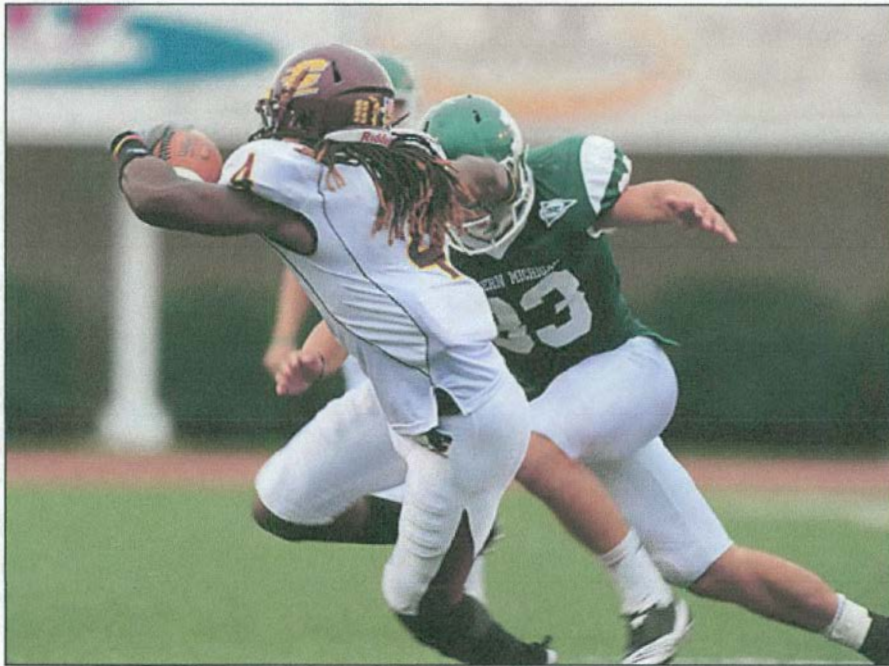
ROCKIN' THE CONVO: Singer-songwriter Jason Mraz rocks the Convocation Center during a concert Sept. 16. The concert drew approximately 3,500 fans. He is best known for his songs "Mr. A-Z," "The Remedy (I Won't Worry)," "You and I Both," "I'm Yours," "Lucky" and "Wordplay."



Featured Photo

FOCUS EMU
Online

Sept. 21, 2010 issue



BIG HIT: Alex Bellfy (No. 33), a sophomore defensive back for Eastern Michigan University, closes in on Central Michigan University tailback Paris Cotton for a big hit. It was one of the few times the Eagles were able to stop Cotton, who racked up 209 yards on 21 carries while scoring three touchdowns. The Chippewas defeated EMU 52-14. The Eagles dropped to 0-2 in Mid-American Conference play and 0-3 overall.

Back to
FOCUS EMU
Online

Featured Photo

FOCUS EMU
Online

Sept. 21, 2010 issue



STRIKE UP THE BAND: (from left) Michelle Shields, an EMU sophomore from Ypsilanti, and her daughter, Izabelle, listen to the EMU Marching Band play the university fight song outside the alumni tent before the Eagles took on Central Michigan University Sept. 18.

Back to
FOCUS EMU
Online

News Briefs



The following are news briefs about important activities and events happening at Eastern Michigan University.

Sept. 21, 2010 issue
News Briefs

By Ron Podell

- Board of Regents to meet Sept. 21
- Academic Success Summit
- MARP Conference
- Pray-Harold power outage
- Campus emergency volunteers needed
- Nikki Giovanni lecture
- Globalizing Curriculums Across Disciplines
- Academic Advising relocated
- Request for grant applications
- Nonprofit Capacity Building Conference



- **Board of Regents to meet Sept. 21:** The Eastern Michigan University Board of Regents is scheduled to meet Tuesday, Sept. 21. The schedule for the meetings is as follows: Athletic Affairs Committee, 12:45-1:30 p.m., room 201, Welch Hall; Faculty Affairs Committee, 12:45-1:30 p.m., room 205, Welch Hall; Student Affairs Committee, 1:45-2:30 p.m., room 201, Welch Hall; Educational Policies Committee, 1:45-2:30 p.m., room 205, Welch Hall; Finance and Audit Committee, 2:45-3:30 p.m., room 201, Welch Hall; and Regular Meeting and Communications Section, 3:45 p.m., room 201, Welch Hall. Times are subject to change. For more information, call Board Secretary Jackie Kurtz at 487-2410.
- **Academic Success Summit:** The Division of Academic Affairs hosts the inaugural Academic Student Success Summit Sept. 24, 9 a.m. to 3 p.m., Student Center. The focus of the summit is on all who teach and/or want to learn more about our undergraduate student population. Come and learn about our students and their perceptions of EMU, as they enter the institution and through graduation, via the National Survey of Student Engagement (NSSE), Cooperative Institutional Research Program (CIRP), and other surveys of EMU students. Faculty, deans, department heads and administrators who work with students are invited to attend. Please register early. Participation is limited to the first 150 registrants. To register, go to <http://www.emich.edu/acadsummit/register.php>. For more information, go to <http://www.emich.edu/acadsummit/>.
- **Michigan Alliance of Reading Professors (MARP) Conference:** The Michigan Alliance of Reading Professors (MARP) presents a conference, "Response to Intervention: Implications for Teacher Educators," Friday, Sept. 24, 9 a.m. to 12:30 p.m., Carillon Room, Halle Library. Karen Wixson, a professor of education at the University of Michigan, will make a presentation. The conference is for post-secondary literacy faculty, special education faculty and doctoral students in literacy. The registration fee is \$10 for non-members and \$5 for doctoral students. The conference is free to current MARP members and those who join MARP on site Sept. 24.
- **Pray-Harold power outage:** The power outage of the Pray-Harold building (originally scheduled for Aug. 20) has been rescheduled for the evening of Friday, Sept. 24, beginning at 6 p.m. and running through 2 a.m. Saturday, Sept. 25. This power outage is needed to fix critical power issues in the data center as part of the Pray-Harold renovation project. This power outage will take the place of the regular weekly IT maintenance schedule conducted every Friday evening. During this power outage, all computer systems in the data center will be unavailable. This includes the Banner system, the my.emich portal, and WebCT/Blackboard. E-mail will be available to off-campus users via the website at <https://mail.emich.edu> (note: this link is always available, in addition to the my.emich icon). All public safety systems (including security cameras and fire alarms) also will remain operational. For more information, contact CIO Carl Powell at 487-1491 or e-mail crpowell@emich.edu.
- **Campus emergency volunteers needed:** Eastern Michigan University's



Wixson

Emergency Management Office will offer training in the EMU Campus Community Emergency Response Team (C-CERT) program, beginning Friday Sept. 24. Students, staff, faculty and community members are encouraged to participate. Using the training learned in the classroom and during exercises, C-CERT members can assist others on campus, in their neighborhood or workplace following an event when professional first responders are not immediately available to help. For more information, visit <http://www.citizen corps.gov/cert/>, call the EMU Emergency Management Office at 487-0799 or e mail emergency.management@emich.edu.



Giovanni

Nikki Giovanni lecture: Nikki Giovanni, a renowned speaker, poet, activist, writer and educator, comes to campus Wednesday, Sept. 29, noon to 1:30 p.m., Student Center Ballroom. She will speak on a variety of topics and share some of her poetry. Giovanni was a guest as part of EMU's former Spectrum Lecture Series in 2002. This event is sponsored by Holman Success Center, the department of African-American Studies, and Diversity and Community Involvement. This event is

open to the public. For more information, call the Holman Success Center at 487-2133.

- **Globalizing Curriculums Across University**

Disciplines: EMU hosts the Midwest Regional Comparative and International Education Society 2010 Conference, entitled "Globalizing Curriculums Across University Disciplines." The conference is scheduled Oct. 29-30, EMU Student Center. Stephen Burwood, EMU's director of international programs, is one of the keynote speakers. The early bird registration deadline is Sept. 26. For more information, go to <http://www.emich.edu/mwcies2010/>.



Burwood

- **Academic Advising relocated:** Academic Advising, formerly located in 301 Pierce, has relocated to 200 McKenny Hall. Students who need to meet with an academic advisor to discuss class schedule changes during this period of open registration need to visit 200 McKenny. Academic Advising is now part of the new University Advising & Career Development Center. For more information, call Adam Meyer at 487-2470 or e-mail ameyer12@emich.edu.



GRANTS AVAILABLE: Women in Philanthropy at EMU seeks applicants for grants up to \$5,000. The application deadline is Oct. 15.

Request for grant applications:

Women in Philanthropy at EMU seeks applications for grants up to \$5,000 for projects that align with the mission and vision of EMU. To be considered, projects must enhance learning opportunities for EMU faculty, staff, alumni and/or students; improve the EMU climate through collaborative efforts; foster creativity and innovation as it relates to EMU; and improve communication among diverse groups within the EMU community. Eastern Michigan faculty, staff, alumni, faculty-

sponsored students and University-registered student organizations are eligible to apply for an award. Grant applications will be accepted until Oct. 15. Awards will be announced in mid-to-late November. For information on grant application requirements and procedures, call the EMU Foundation at (734) 481-2323.

- **Nonprofit Capacity Building Conference:** A Nonprofit Capacity Building Conference, entitled "Reinventing and Increasing Sustainability of Nonprofit Organizations," is scheduled Oct. 14 in the Student Center. The conference will focus on capacity building for small to mid-size nonprofit organizations. It will include a keynote speaker, breakout sessions, lunch and networking opportunities. Organizational leadership staff and board members will benefit by attending. The conference is hosted by EMU's Institute for the Study of Children, Families and Communities. Cost is \$30. To register, go to <http://ep.emich.edu/ISCFC/template.aspx>. For more information, call 486-0327.

Why I teach at Eastern Michigan University

FOCUS EMU
Online

Sept. 21, 2010 issue



"While I teach the same class every semester, it never feels like a repeat."

Karen Dykstra
Linguistics Lecturer
English language and literature

I came to EMU in 1998 as a student, studying for my second master's degree in Teaching English as a Second Language (TESOL). For that degree, I was required to take an English linguistics class and, from that moment on, I was hooked. I immediately changed my degree to linguistics, but I really had no plan for the end result.

After I graduated in 2000, I was asked to fill in for another professor. I agreed and soon became a full-time lecturer. I teach mostly introductory classes for the linguistics program. I also regularly teach the "English Words" class and "Language and Culture" class, and occasionally Language and Gender.

As a linguist, I have quite a few of my own areas of research and interest, mostly focused on the phonology and morphology (the study of sounds and words, respectively) of the English language. I also study Greek linguistics and continue to teach English as a Second Language (ESL) to private clients.

For the summer, I am working on course design and class improvement. I'm also trying to get more and more of my material online, so that my students and I don't have to run back and forth between classes with armloads of papers.

I love the variety at Eastern; it gives me great flexibility in my job. While I teach the same classes each semester, it never feels like a repeat. I love to hear the students' stories. Each one comes from a different place and has had different experiences. The exchange of ideas and stories is very valuable to me.

I've worked at other universities before, but have never had such great experiences, both with the students and fellow faculty. I love to meet new faculty and the move to Hoyt is really a fun opportunity to meet and talk to new and different people. — *Contributed by Leah Shutes*