

Aug. 29, 2006
Volume 54, No. 03

FOCUS EMU

Online

Featured Articles

- New student center will become hub for campus life
- EMU earns designation as "Best Midwestern College" for fourth consecutive year from The Princeton Review
- EMU recognized as one of top 100 campuses for LGBT students
- "Concrete and Classrooms" project designed to spruce up campus
- Downing Hall renovations highlight summer construction
- Academic Affairs undergoes reorganization (Reprinted from Aug. 8 issue)
- Governmental relations director heads administrative changes
- Forty-one new tenure-track faculty start this fall
- Vice president for advancement heads new staff appointments
- Campus Life schedule includes movie lineup, Pirate Week and open mic nights
- Shakespeare, musical pirates headline EMU Theatre season
- Art exhibits will be staged at two venues this year
- Music schedule offers a sound for every crowd
- Fall sports preview/summer athletics roundup

New student center will become hub for campus life

For the past two years, construction progress of the exterior of the new student center has been front and center for all to see. The planned, 181,000-square-foot mecca for student activities and programming is 84 percent complete and is expected to open Nov. 6.

However, it is detailed plans for the inside of the facility that have recently taken shape as blueprints for each floor of the building were unveiled at an Aug. 9 meeting in McKenny Union's Guild Hall.

The \$40.4 million project will include a dining marketplace (dubbed the Marche Food Court), bookstore, retail space, a TCF bank, a ticket office for the Convocation Center, a game room and one meeting room on the first floor.

Follett will run the bookstore, which will be 13,000 square feet. EMU apparel and general merchandise, a large general books area, a lounge with a coffee shop, and the University Computer Store. The square footage also includes support spaces for storage, offices, etc.

Some of the food vendors expected to occupy the building include Subway, Wendy's, Taco Bell, Sbarro and Panda Express. The food court will sit approximately 450 people.

The second floor will include the Admissions Welcome Center, Service EMU, Student Judicial Services, Academic Service-Learning, a 24-hour computer lab, a 650-seat ballroom (that can be divided into two, smaller rooms), a 250-seat auditorium, coffee shop, galleries, lounges, relaxing spaces for students and two meeting rooms.

"The auditorium has a wonderful sound system. We can present films, TV shows, presentations and Web cams," said Carlos Costa, director of the new student center. "There is a lot of flexibility to support your activities."

The third floor will house the Center for Student Involvement, 10 meeting rooms, and offices for Student Government, Diversity Programs, Campus Life, VISION, Event Planning and the building administration. The largest meeting room includes seating for 325 in theater style or 208 for roundtable seating. There also will be a round Kiva room, akin to those used in Native American culture.



WINDOW VIEW: Work continues inside the new student center, which is expected to open Nov. 6. Here, a contractor works on the ceiling near the east side of the 181,000-square-foot building. Photo by Randy Mascharka

- Student Government leaders working for fellow students
- Be in the know
- When's the next FOCUS EMU?
- *Photo:* Women's soccer team wins exhibition game
- Faculty service anniversaries
- *Obits:* Three former EMU employees die
- By the numbers
- Briefs
- Jobsline
- Why I work at Eastern Michigan University

More on this story...



Aug. 29, 2006
Volume 54, No. 03

FOCUS EMU

Online

Featured Articles

New student center will become hub for campus life
 EMU earns designation as "Best Midwestern College" for fourth consecutive year from The Princeton Review
 EMU recognized as one of top 100 campuses for LGBT students
 "Concrete and Classrooms" project designed to spruce up campus
 Downing Hall renovations highlight summer construction
 Academic Affairs undergoes reorganization (Reprinted from Aug. 8 issue)
 Governmental relations director heads administrative changes
 Forty-one new tenure-track faculty start this fall
 Vice president for advancement heads new staff appointments
 Campus Life schedule includes movie lineup, Pirate Week and open mic nights
 Shakespeare, musical pirates headline EMU Theatre season
 Art exhibits will be staged at two venues this year
 Music schedule offers a sound for every crowd
 Fall sports preview/summer athletics roundup

New student center will become hub for campus life

For the past two years, construction progress of the exterior of the new student center has been front and center for all to see. The planned, 181,000-square-foot mecca for student activities and programming is 84 percent complete and is expected to open Nov. 6.

However, it is detailed plans for the inside of the facility that have recently taken shape as blueprints for each floor of the building were unveiled at an Aug. 9 meeting in McKenny Union's Guild Hall.

The \$40.4 million project will include a dining marketplace (dubbed the Marche Food Court), bookstore, retail space, a TCF bank, a ticket office for the Convocation Center, a game room and one meeting room on the first floor.

Follett will run the bookstore, which will be 13,000 square feet. EMU apparel and general merchandise, a large general books area, a lounge with a coffee shop, and the University Computer Store. The square footage also includes support spaces for storage, offices, etc.

Some of the food vendors expected to occupy the building include Subway, Wendy's, Taco Bell, Sbarro and Panda Express. The food court will sit approximately 450 people.

The second floor will include the Admissions Welcome Center, Service EMU, Student Judicial Services, Academic Service-Learning, a 24-hour computer lab, a 650-seat ballroom (that can be divided into two, smaller rooms), a 250-seat auditorium, coffee shop, galleries, lounges, relaxing spaces for students and two meeting rooms.

"The auditorium has a wonderful sound system. We can present films, TV shows, presentations and Web cams," said Carlos Costa, director of the new student center. "There is a lot of flexibility to support your activities."

The third floor will house the Center for Student Involvement, 10 meeting rooms, and offices for Student Government, Diversity Programs, Campus Life, VISION, Event Planning and the building administration. The largest meeting room includes seating for 325 in theater style or 208 for roundtable seating. There also will be a round Kiva room, akin to those used in Native American culture.



WINDOW VIEW: Work continues inside the new student center, which is expected to open Nov. 6. Here, a contractor works on the ceiling near the east side of the 181,000-square-foot building. Photo by Randy Mascharka

August 29, 2006 issue
**New student center will
 become hub for campus life**

By Ron Podell

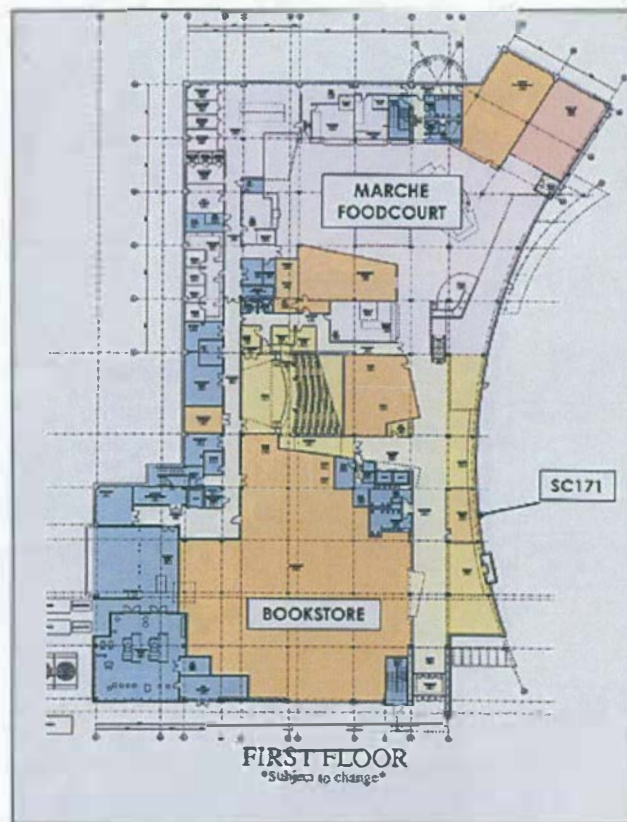
Back to Current Issue
FOCUS EMU
 Online

For the past two years, construction progress of the exterior of the new student center has been front and center for all to see. The planned, 181,000-square-foot mecca for student life and programming is now 84 percent complete and is expected to open Nov. 6.

However, it is the detailed plans for the inside of the facility that have recently taken shape as blueprints for each floor of the building were unveiled at an Aug. 9 meeting in McKenny Union's Guild Hall.

- The \$40.4 million project will include a dining marketplace (dubbed the Marche Food Court), bookstore, retail space, a TCF bank, a ticket office for the Convocation Center, a game room and one meeting room on the first floor.

Follett will run the bookstore, which will be 13,000 square feet. The bookstore space will include areas for textbook sales, EMU apparel and general merchandise, a large general books area, a lounge with a coffee shop, and the University Computer Store. The square footage also includes support spaces for storage, offices, etc.



AN INSIDE LOOK: Blueprints for the new student center's first floor includes a food court, bookstore and meeting room. The new student center is slated to open Nov. 6.

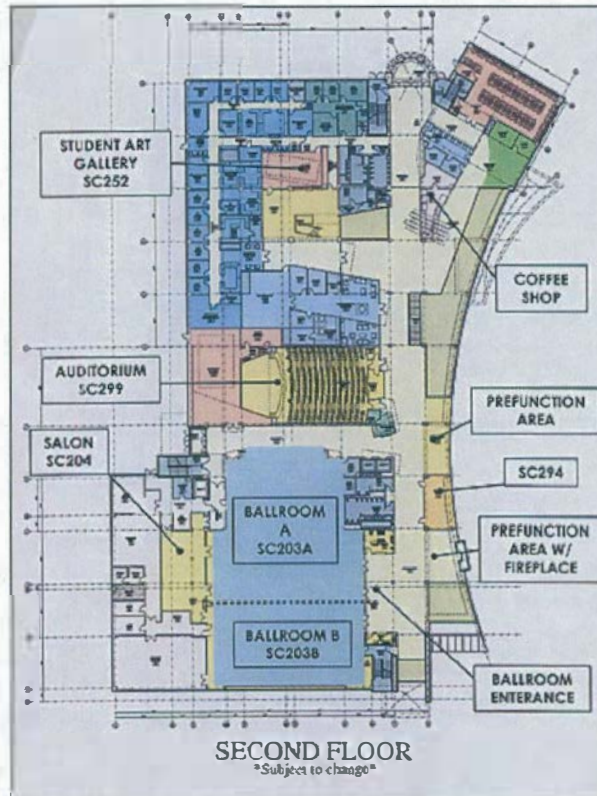
Subway, Wendy's, Taco Bell, Sbarro and Panda Express are some of the food vendors expected to occupy the building. The food court will seat approximately 450 people.

- The second floor will include the Admissions Welcome Center, Service EMU, Student Judicial Services, Academic Service-Learning, a 24-hour computer lab, a 650-seat ballroom (that can be divided into two, smaller rooms), a 250-seat auditorium, coffee shop, a student art gallery, lounges, relaxing spaces for students and two

meeting rooms.

"The auditorium has a wonderful sound system. We can present films, TV shows, presentations and Web cams," said Carlos Costa, director of the new student center. "There is a lot of flexibility to support your activities."

- The third floor will house the Center for Student Involvement, 10 meeting rooms, and offices for Student Government, Diversity Programs, Campus Life, VISION, Event Planning and the building administration. The largest meeting room includes seating for 325 in theater style or 208 for roundtable seating. There also will be a round Kiva room, akin to those used in Native American culture.



SECOND FLOOR VIEW: The second floor of the new student center includes a 650-seat ballroom and a 250-seat auditorium, an art gallery, coffee shop and fireplace.

much as possible and also promote the view of University Park and the Lake House, Costa said. All meeting rooms located along the east side will have a window view. In the winter, students can gather around the fireplaces that will dot the common areas.

Event Planning has announced a brand new catering option plan that is expected to be used extensively. Approximately 660 events — including conferences, meetings and seminars — have been booked for the new student center from November through June 2007 said Glenna Frank Miller, director of McKenny Union and Campus Life, whose title will change to executive director of the new student center. For details about the catering plan, call Event Planning at 487-4108.

Outside, the facility is still being landscaped and 250 parking spaces are available on the west side of the new student center. The parking spaces are expected to be available for student use beginning in September. Traffic walking patterns to the new center will include pathways from the Rec/IM, the Towers, central campus, residence halls, commuter parking

"All meeting rooms have sophisticated lighting systems. You can set different lighting levels," Costa said. "In every room and office area, there will be detectors that turn out the lights on a timer."

Meeting rooms will include several other comfort and convenience features, including: individual box controls for heating, air conditioning and ventilation; built-in floor boxes to plug in extension cords; and closets to store audiovisual equipment, Costa said.

To make the building more inviting during the warmer months, glass-paneled walls on the east side of the building will maximize the natural daylight as

lots and main campus.

"We're going to have a weeklong (Nov. 6-13) series of programs and activities to celebrate our building," Miller said.

A formal dedication of the new student center is planned Nov. 17, Miller said.

"After we occupy the new student center, we will close McKenny Union down for renovation and have it reopened by September 2007," said Larry Ward, director of facility maintenance.

The renovation will cost approximately \$4.6 million, Ward said.

When the building reopens, it will be renamed Charles McKenny Hall. Career Services will be housed in the current bookstore. Human Resources will occupy the lower floor currently being used by McKenny Union and Campus Life. The ballroom will remain intact and continue to be used for various functions.

All current meeting rooms in McKenny Union will remain as such, Miller said. A lobby shop offering pre-made sandwiches, similar to the Paradox Café in Halle Library, will be available, said Larry Gates, director of Dining Services.

Feature

FOCUS EMU
Online

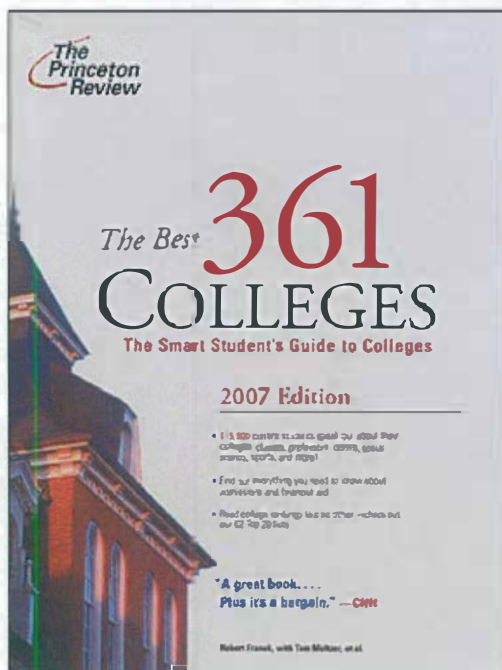
August 29, 2006 issue
EMU earns designation as a "Best Midwestern College" for fourth consecutive year from The Princeton Review

By Ward Mullens

Back to Current Issue
FOCUS EMU
 Online

Eastern Michigan University has been recognized as a "Best Midwestern College" for 2007 by The Princeton Review. It marks the fourth consecutive year that EMU has received the honor, which is part of the book, "The Best 361 Colleges" (Random House/Princeton Review, \$21.95).

"This is one of the best endorsements any university can get because it comes directly from the students," said John Fallon, president of Eastern Michigan University.



BEST IN MIDWEST: For the fourth consecutive year, Eastern Michigan University was named a "Best Midwestern College" by The Princeton Review.

In general, EMU students describe their fellow students as "nice and easy to become friends with."

"Eastern is a melting pot in a way, so there really isn't an atypical student," said another student.

EMU was one of 163 institutions to earn the designation of "Best Midwestern College." The recognition is based solely on a survey of 115,000 students at 361 colleges. The 80-question survey asks students about their school's academics/administration, campus life, student body and themselves.

"We consider these colleges the best in the nation academically," said Robert Franek, author of the book.

"The greatest strength of EMU is its broad diversity!" said one undergraduate student in the survey. "Students come from a wide variety of 'social, economic, political, and cultural backgrounds, and there are a 'large number of international and nontraditional students' on campus," noted the student.

Feature



August 29, 2006 issue
EMU recognized as one of top 100 campuses for LGBT students

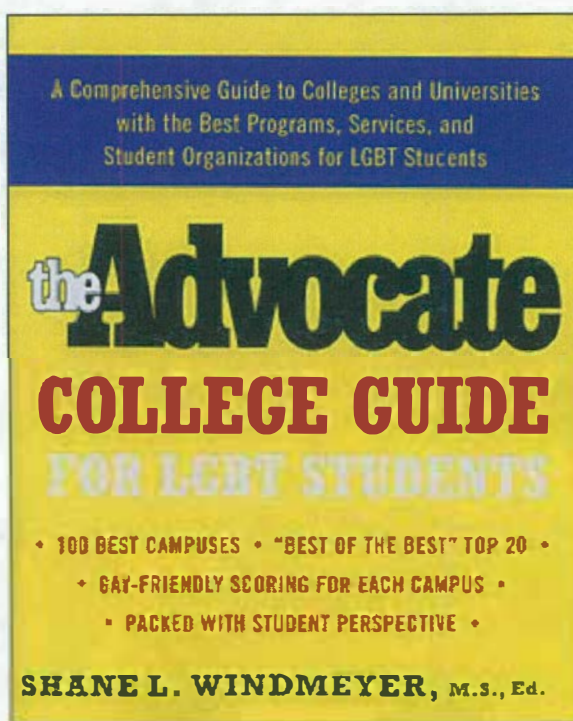
By Ward Mullens

Eastern Michigan University has been recognized as one of the 100 Best Campuses for lesbian, gay, bisexual and transgendered (LGBT) students by The Advocate College Guide for LGBT Students, the first comprehensive campus guide to highlight the 100 most LGBT-friendly campuses in the United States.

"EMU prides itself on its diversity and its efforts to create an inclusive environment," said Jim Vick, vice president for student affairs at EMU. "Being recognized as one of the best universities for LGBT provides some evidence that we are successful in our endeavors and that this success will encourage others to become part of the EMU family."



The book, available from Alyson Books, profiles 100 colleges and universities from across the country that offer resources and create a positive living and learning environment for LGBT students. Campus PrideNet, the leading national organization for LGBT and ally student leaders, with support from a team of expert LGBT professionals from the National Consortium of Directors of LGBT Resources in Higher Education, developed the criteria and a questionnaire for nominations. The purpose of the questionnaire was to gather feedback from current LGBT students, faculty and staff regarding personal experiences and opinions about their campus.



LGBT FRIENDLY: Eastern Michigan University was recently named one of the 100 most LGBT-friendly campuses in the United States by The Advocate College Guide for LGBT Students.

After receiving nominations from 680 campuses and conducting more than 5,500 online interviews, 100 campuses were selected for the book based on institutional policies, commitment and support, academic life, housing, student life, counseling and health services, campus safety, and recruitment and retention efforts. The list of 100 is broken down in multiple indexes such as region, state, type of institution and size. Individual campus profiles include information on size, tuition, admission application deadlines, gay-affirmative policies, events, LGBT student groups and resources, housing for LGBT students and more.

"This award affirms what we know to be true, that EMU is a very diverse

and a welcoming place," said Glenna Frank Miller, director of McKenny Union and Campus Life. "We are proud of our LGBT Resource Center and the staff. They help create such a great environment for all of our students."

"The top 100 colleges and universities profiled in The Advocate College Guide lead the way for the rest of higher education to be LGBT-friendly. These campuses take to heart the value of supporting all students...what better way for a campus to come out as LGBT-friendly," said Shane L. Windmeyere, executive director of Campus PrideNet and the author of the guide.

"Of course, I am thrilled and excited about the EMU Campus receiving this honor. However, I am not surprised," said Kay Woodiel, director of diversity programs and community service. "The Lesbian, Gay, Bisexual, Transgendered Resource Center at EMU recognizes the need for balance between social, educational and political programming. Indeed, the LGBTRC is providing our campus with educationally purposeful diversity and opportunities for learning beyond the classroom. We want to continue our work for the transgendered community and toward a University policy for gender identity and expression."

For additional information about Campus PrideNet or to order a copy of The Advocate College Guide for LGBT Students, visit www.campuspride.net.

Feature

FOCUS EMU
Online

August 29, 2006 issue
"Concrete and Classrooms" project designed to spruce up campus

By Ron Podell



When students return to Eastern Michigan University next week, they will notice their stroll to class will include smoother sidewalks and more and varied trees.

The sprucing up of campus is part of a \$2.6 million "Concrete and Classroom Improvements" project that took place this summer and will continue into the fall.

Part of the sidewalk replacement takes place along the tour route used to show potential students main points of interest on campus.



"We want students to get out of the car, take a look and see a 'wow factor,'" said Steve Holda, interim director of business and finance.

MEN AT WORK: (from left) EMU President John Fallon; Tony Catner, associate vice president, business and finance-facilities; and Steve Holda, interim director of finance, watch as workers from V&J Concrete pour a new section of sidewalk near Rackham Hall. The work is part of a \$2.6 million "Concrete and Classrooms" project on campus. Photo by Ward Mullens

"This project represents a strategic investment in several areas where longstanding needs have been deferred due to a lack of funding," said EMU President John Fallon.

Some of the more visible sidewalk improvements can be seen on the mall area from Welch Hall to the Porter Building. In addition to new sections of concrete along various spots on the mall, all of the grass and tree islands along the mall route (near Welch and Starkweather Hall, past King Hall and to the Marshall building) have been fitted with curbing. The curbing is not only more aesthetically pleasing, but aids in water runoff, Holda said.

New sections or patches of concrete sidewalk also can be seen outside Bowen, McKennan Union, King Hall, Pierce Hall, the Marshall and Porter buildings, Mark Jefferson, Halle Library, Rackham Hall and in the Martin Luther King, Jr. Memorial area.

"We tried to pick the ones in the worst shape. We chose areas where the sidewalk was uneven or had too many cracks," said Larry Ward, director of

facilities maintenance. "We're fixing bad sidewalks, improving ADA aspects with the curb cuts and improving the overall appearance of campus."

The project also includes planting of 135 trees on campus, to replace those lost to ash borer disease. Trees lost were primarily pines. To avoid losing trees in the future, new ones planted will be of diversified species, said Melinda Ostrander, director of grounds, motor pool and custodial services.

Species include striped maple, dogwood, tulip, chestnut oak, white oak, jack pine, witch hazel, hardy rubber tree, dawn redwood, American plum, American cranberry bush, sassafras, blue ash and red mulberry.

"The trees will be planted across the campus, taking into consideration the settings most appropriate for the height, width and density that the full-grown tree will ultimately attain as well as the locations that offer the best chance of survival," she said.

In addition, a number of windows on the north side of Bowen Field House are being replaced.

The classroom portion of the improvements include replacing damaged and non-ergonomic chairs, tools, tables and desks; as well as increasing the level of technology in select classrooms throughout almost all of the University's classroom buildings, Holda said.

"We're making improvements so that the students can see it and feel it," Holda said. "We're trying to build some excitement on campus for students."

Feature



The summer months may serve as down time for much of Eastern Michigan University's student population. However, June, July and August are often prime time for campus construction.

And while the new student center is the most visible construction project on campus, many others that benefit students took place during the summer.

Last summer, Buell Hall underwent extensive renovations in an effort to improve campus housing for students. This summer, Downing Hall was the recipient of some major sprucing up.

Renovation was extensive, taking place in dorm rooms, the bathrooms, the lobby and common areas. In addition, new furniture, new carpet and a new fire alarm and suppression system were installed. Work was completed before students move in this weekend for the fall 2006 semester.

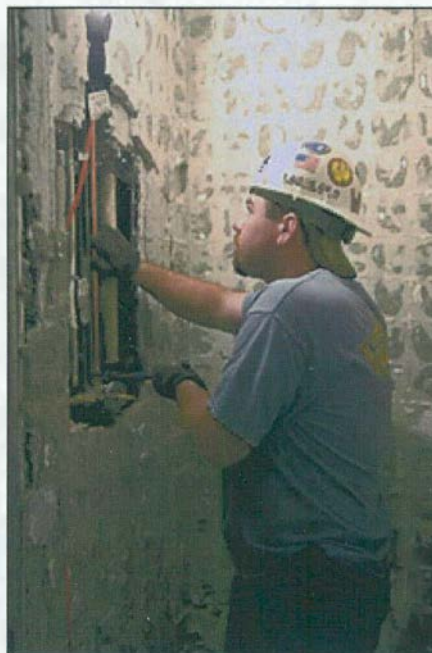
"We removed all of the old wood partitions that divided the living room and bedroom, and replaced that with drywall walls," said Sean Berdan, a coordinator of construction projects for the physical plant. "We gutted the bathrooms and put in completely new showers, toilets, sinks and fixtures."

Downing's lobby area also was overhauled. A new front desk was built and the lobby furniture was replaced. New carpet, light fixtures and finishes were installed and the area also received a fresh coat of paint.

The physical plant did go back to Buell this summer and renovated the lobby area, put in a new front desk and refinished the recreation room. In addition, some common area bathrooms in Buell and Downing were upgraded to become ADA compliant.

Aug. 29, 2006 issue
**Downing Hall
 renovations
 highlight summer
 construction**

By Ron Podell



WET WORK: As part of the Downing Hall renovation this summer, bathrooms in each dorm room were gutted. Here, a plumber installs new temperature controls for the shower. Photo by Randy Mascharka

replaced. New carpet, light fixtures and finishes were installed and the area also received a fresh coat of paint.

The physical plant did go back to Buell this summer and renovated the lobby area, put in a new front desk and refinished the recreation room. In addition, some common area bathrooms in Buell and Downing were upgraded to become ADA compliant.



BUELL LOBBY: The Buell Hall lobby was renovated this summer, with work including a new front desk area. Here, Chris Longerbeam and Sean Berdan, coordinators of construction projects for the physical plant, inspect blueprints for the project. Photo by Randy Masharka

Walls in Phelps, Walton and Putnam halls were repainted. Doors and trim were painted in Sellers Hall. Phelps Hall also received new carpeting in the corridors.

Other housing projects completed this summer include:

The interior walls and ceiling of dorm rooms inside all of the buildings in the Village were re-painted.

Windows and water lines were replaced at the Tri-Sig House, which the University owns. The old plastic water lines were replaced with copper lines, said Larry Ward, director of facility maintenance.

Six deteriorating stairs were repaired or replaced at Cornell Apartments.

Pray-Harrold and Mark Jefferson

For years, there have been discussions about renovating Pray-Harrold and Mark Jefferson, EMU's two largest classroom buildings. It finally appears those discussions are moving closer to reality.

BUELL LOBBY: The Buell Hall lobby was renovated this summer, with work including a new front desk area. Here, Chris Longerbeam and Sean Berdan, coordinators of construction projects for the physical plant, inspect blueprints for the project. Photo by Randy Masharka

painted in Sellers Hall. Phelps Hall also received new carpeting in the corridors.

Other housing projects completed this summer include:

The interior walls and ceiling of dorm rooms inside all of the buildings in the Village were re-painted.

Windows and water lines were replaced at the Tri-Sig House, which the University owns. The old plastic water lines were replaced with copper lines, said Larry Ward, director of facility maintenance.

Six deteriorating stairs were repaired or replaced at Cornell Apartments.

Pray-Harrold and Mark Jefferson

For years, there have been discussions about renovating Pray-Harrold and Mark Jefferson, EMU's two largest classroom buildings. It finally appears those discussions are moving closer to reality.

A final program statement for both of Pray-Harrold's \$10 million and \$55 million renovation projects are complete. Use and Finance statements have been completed for both scenarios, Ward said.



Pray-Harrold

Gov. Jennifer Granholm has included \$52 million for the renovation of Pray-Harrold in her proposed budget. The renovation project has topped EMU's list of capital projects since 1999.

When it opened in 1969, Pray-Harrold was one of the largest classroom buildings in the United States. Built for \$5.6-million, the seven-story structure accommodated 4,500 students each hour in its 75 classrooms and four lecture halls. Fully air-conditioned, the structure provided office space for 407 faculty members.

The exterior and site building conceptual plans for Mark Jefferson are finalized. In addition to planned renovations, a physical connection is planned between Mark Jefferson and Strong Hall, which will create a science complex, Ward said.

A new look

The University is in discussions with the city of Ypsilanti to close and

vacate Forrest Avenue/College Place. University officials want to turn that road into a pedestrian walkway and improve pedestrian safety near Pease Auditorium.

"We want to create a mall and redirect traffic to other parts of the city," Ward said.

Feeling secure

Efforts to improve campus safety that started last year continued during the summer. Security camera installation was completed in Mark Jefferson, Strong Hall and Halle Library. Upgraded recording equipment was installed in Best, Buell, Wise and Downing halls.



FEELING SAFE: Audrey Johnson demonstrates how accessible the alarm is at the emergency assistance station installed at Mark Jefferson this summer. Another station is located in Strong Hall. Photo by Randy Mascharka

traffic patterns "

Emergency assistance stations are complete in Mark Jefferson and Strong Hall. The stations include an alarm and the ability to communicate directly with the Department of Public Safety. From their office at the parking structure, DPS personnel can view video of the emergency assistance station that the person is calling from. A similar station will be installed at the College of Business this fall.

Four new security camera systems were installed in the Porter Building. In addition, a wireless duress system was placed in two labs (including the CATE lab) that have extended operating hours in the building.

"Additional exterior lighting has been added outside Boone and King halls to improve campus security," Ward said. "We've added new light poles outside Hover and Scherzer. This was done to accommodate changes in campus growth and walking

As an ongoing effort to improve emergency response capabilities, the physical plant has installed a standby generator that will allow trade shops and office operations to remain functional during power outages and in times of critical need. This will allow the physical plant to operate as a command post site, Ward said.

Security upgrades are not just mechanical. In conjunction with DPS and the Department of Health and Safety, physical plant employees are being trained to respond to emergency situations as part of the National Incident Management System (NIMS). The Department of Homeland Security introduced this program in March 2004 to improve local response operations through application of standard procedures and preparedness measures.

A conceptual design has been completed for a build-out and renovation of the Department of Public Safety offices at the parking structure.

Light it up

Improving lighting in various campus buildings is designed not only to make things easier on the eyes, but also to improve energy efficiency on campus.

Summer lighting projects included:

- Replacing failing T-12 light fixtures with energy-efficient T-8 fixtures. In-house electricians are performing the ongoing work.

"The T-8s put out the same amount of light, but saves on ballast replacement costs," Ward said.

- A project has been developed to upgrade lights and improve energy conservation in the Alexander Building. The work will include replacement of the majority of the ceiling tiles in the building.

Fresh air

A fresh coat of paint or new lighting can make a building more inviting, but it's what you don't see that can make you just as comfortable. This is especially true of building improvements made to regulate temperature and/or improve air quality.

A number of such improvements took place over the summer. These include:

- The HVAC system was upgraded on the second and third floors of Snow Health Center. The upgrade included the replacement of an air handling unit and 60 obsolete induction controls (for air quality) serving individual rooms were updated.
- Ventilation of the pool filter room in Warner has been improved to comply with current health codes. A new exhaust fan and more than 50 feet of additional duct have been installed.
- Air conditioning has been installed in Pray-Harrold's elevator mechanical room to accommodate the needs of the new elevator controls. The same has been done to Pittman Hall's elevator mechanical room.
- At the College of Business, replacement of parts for three air handling unit fans is complete. The project has improved building ventilation, occupant comfort and has resulted in some energy savings, Ward said.
- Eight new, energy efficient boilers were installed at the Westview apartment complex. The boiler efficiency has been improved 70-80 percent, said Chris Longerbeam, a coordinator of construction projects.

Going up

The joke among students is that you can get on an elevator in Pray-Harrold on a Monday and arrive at your destination the next day. Improving those and other elevators on campus was a summer priority.

Of the four elevator cars in Pray-Harrold, one car is operational while the other three will be repaired, Ward said. An elevator renovation plan for Mark Jefferson is similar. The initial phase will provide for the complete replacement of the three elevator cars, machines and controls. The first car replacement took place in June.

Other elevator projects include:

- A capital outlay plan for elevator renovation in Mark Jefferson has commenced. The first elevator car was replaced in June. Replacement of two other elevator cars, machines and controls with modern, state-of-the-art equipment is underway.
- A project is in progress to replace two elevator cars, machines and control systems with new state-of-the-art equipment in Pittman Hall. This will be completed in September, Ward said.
- The entire elevator car in Snow Health Center was replaced.
- The elevator cab in Walton Hall was replaced.

At the eateries

A number of aesthetic and functional improvements took place or are planned at EMU's various dining establishments this summer.

The student entrance to Dining Commons 1 received a facelift. The flooring was replaced and the entrance repainted.

"We tried to dress up the entrance and throw a little color in there," Longerbeam said.

In addition, 80 percent of the DC1 windows were replaced by mid-August.

The dock area at Dining Commons 2 will be upgraded with the driving surface replaced and the storm sewer repaired.

Work to install an emergency generator at Dining Commons 3 began this summer and will continue into the fall, Ward said. The emergency generator is needed to carry the complex emergency lighting, the fire pump, food freezers and coolers in the event of a DTE power outage.

The heat is on

The heating plant, an old building that rarely receives a second look on campus, is one of its most vital. Much attention was paid to this structure this summer, with the building receiving components to make it more energy efficient as well as a new paint job and some roof repairs.

The heating plant's boiler control system was overhauled. The first boiler received an automated control system, new oxygen sensors and a capacity monitor. The second boiler received new CO and CO2 sensors.

In addition, repairs were made inside the boilers to improve the efficiency of the units and extend the life of the boiler.

"This project will provide improved efficiency of the operation of the boiler," Ward said.

The exterior of the building was painted to match the paint used on the

outside of Halle Library. Approximately 50 percent of the heating plant's old roof was replaced.

Odds and ends

Pierce Hall is in the midst of a data cabling upgrade. The project includes complete replacement of the data cabling system and a new, year-round, air-conditioned data closet with state-of-the-art switching equipment.

"The project will enhance communications and speed of the Pierce system," Ward said.

The physical plant worked with ICT to upgrade data infrastructure at Mark Jefferson. New data cabling and new data switching equipment for the entire building were installed.

The Career Services suite, located on the second floor of the College of Business, was renovated. The entrance and reception area were redone.

Re-roofing of Sill Hall was 60 percent complete this summer, Ward said.

The first phase of window replacement at Quirk Hall was completed. Windows with the most critical need were addressed first. The goal is to improve building occupancy comfort and energy efficiency.

The Cooper Building was recoated, stucco painting applied and lighting upgraded. This was done to accommodate the move of the linguistics department from Pray-Harrold to the Cooper Building.

The roof on Boone Hall was recoated.

Rackham Hall received miscellaneous repairs, including tuck-pointing and masonry repairs, roofing repairs and new replacement windows.

Carpet in the main floor area of Pease Auditorium will be replaced by September.

Portions of Westview Road have failed. Engineering and survey work have been completed, with roadwork scheduled in the fall, Longerbeam said.

Large abandoned or obsolete equipment is being removed from several campus buildings. The project will improve safety, free up valuable floor space and make it easier to access and work on functional equipment.

"For example, we have some old pumps and air-conditioning units in Mark Jefferson that are outdated and need to be removed," Ward said.

Feature

FOCUS EMU
Online

August 29, 2006 issue
**WEMU-FM becomes
first high-definition
public radio station
in state of Michigan**

By Ron Podell



Editor's Note: This article originally appeared in the Aug. 8 issue of FOCUS EMU. It is being run again to provide the information to members of the campus community who may have been away this summer.

To streamline resources and strengthen efficiency and effectiveness in Academic Affairs, a major reorganization of the division was announced July 31.

The reorganization includes consolidating three associate vice president positions to one; renaming the existing senior associate vice president position and redefining the position's duties; renaming the assistant vice president for academic human resources and adding divisional budget management responsibilities; eliminating the associate dean position in the Graduate School and a vacant dean position in Continuing Education; and creating three new functional roles to focus on interdisciplinary programming, diversity and international programming, and a coordinator for research institutes and centers.

This reorganization allows Academic Affairs to reallocate resources to address priorities such as enhancing interdisciplinary programming, strengthening international and global learning opportunities, and enhancing support for scholarly and creative activities.

"These changes are driven by the serious fiscal constraints we face and the desire to organize the division to operate as efficiently and effectively as possible," said Don Loppnow, provost and vice president for academic affairs. "This reorganization affects a number of individuals. The fact that this reorganization profoundly impacts the careers and lives of people who have served the University well has made this decision both difficult and agonizing."



Loppnow

The net result of these changes and other personnel changes within Academic Affairs results in approximately \$840,000 in cost savings, Loppnow said. Of those savings, approximately \$240,000 will be allocated to implement the reorganization and fund several of the new initiatives, he said. The total reorganization package should net approximately \$600,000 in divisional savings, which is necessary to meet the budget target for this fiscal year, Loppnow said.

The realignment was the result of a study conducted by the Divisional Office Realignment Task Force. The task force, created in November 2005, studied the organizational structure and staffing in all Academic Affairs offices except the colleges. The committee was asked to look for ways to streamline the administrative structure, find efficiencies and enhance

effectiveness.

In late May 2006, the task force submitted its report and recommendations to Loppnow. The report recommended several guidelines, including:

- Consolidation of undergraduate and graduate program oversight under one executive level administrator.
- Creation of an Office of Continuous Improvement, with broad responsibilities related to accreditation, assessment, planning and program review.
- Creation of a position for coordination of diversity and international initiatives.
- Consolidation of the administrative oversight of research institutes and centers, coupled with release time for appropriate faculty for focused attention on the scholarly components of the institute's or center's mission.

"In the new structure, I not only incorporated much of the Task Force's thinking but also made several additional changes intended to strengthen the Division's operation," Loppnow said.

The realignment includes the following changes:

- Three existing associate vice president positions (Undergraduate Studies, Graduate Studies and Research, and Extended Programs) will be consolidated into one position, the associate vice president for academic programming. Functionally, many of the administrative units that were previously a part of Undergraduate Studies, Graduate Studies and Research, and Extended Programs will now have different reporting relationships.



Neely

In order to save funds, this new position will be vacant pending the outcome of a search that will be launched in early fall. In the interim, Bob Neely, interim senior associate vice president for academic affairs, will handle the responsibilities of the position.

Bob Holkeboer, associate vice president for graduate studies and research, and Ellene Contis, associate vice president for undergraduate studies, will return to the faculty. Both will take professional development leaves effective in the fall semester.

- The existing senior associate vice president position occupied by Neely has been redefined and re-titled associate provost and associate vice president for research. Neely will serve in this role on an interim basis. A search will be launched to fill this position with a permanent appointment.

"This position includes areas of responsibility that have both institutional and divisional impact, and incorporate the research activities of the

division," Loppnow said. "The net result of the foregoing changes is that we will move from four senior level positions to two."

Two positions — David Costanza, manager, budget and operations; and Sandra Williams, director of institutional assessment — were eliminated as part of the reorganization.

- The existing position of assistant vice president for Academic Human Resources will be renamed assistant vice president for Academic Human Resources and Divisional Budget. This position will assume the major responsibility for divisional budget management. Rhonda Kinney Longworth serves in this position on an interim basis.



**Kinney
Longworth**



deLaski-Smith

The associate dean of the Graduate School position that has been occupied by Deb deLaski-Smith will be eliminated and converted to a position titled dean of the Graduate School. deLaski-Smith will serve as the interim dean and a search will be conducted to appoint a permanent dean. A vacant assistant dean position in Continuing Education will be eliminated and converted to a position entitled dean of Continuing Education. Mary Sue Marz, who has been serving as associate vice president for Extended Programs, will serve as interim dean of Continuing Education. A search for the permanent dean will be launched early this fall, Loppnow said.

- Three new functional areas will be created. These include a leadership role and resources for interdisciplinary programming; a leadership role promoting diversity in the classroom and in scholarly activities, and coordinating and facilitating international programming; and a coordinating office for research institutes and centers that will provide post-award support to faculty who lead research units.

"Several other administrative and staff positions within the existing organizational structure are affected by these changes, including several that are being moved to different administrative units; several new staff positions that are being created; and, regrettably, several positions that are being eliminated," Loppnow said. "All of these changes are precipitated by the need to reduce costs and are intended to ultimately enhance efficiency and effectiveness."

A full organizational chart for the provost's office will be posted once it has been refined in consultation with staff in several of the administrative units, Loppnow said.

Eastern Michigan University's WEMU-FM (89.1) has become the first public radio station in Michigan to broadcast in high-definition (HD) radio. HD is new technology that combines analog signal generation with digital transmission on the same frequency. "AM (radio) sounds like FM and FM

sounds like a CD," said Art Timko, general manager of WEMU, describing the improved station transmission that went into effect April 7. "The sound is crisper, cleaner, and fuller and you can hear the bass and higher frequencies."

In addition to improved sound, listeners with an HD radio receiver in their car will receive data streaming information – an artist's name, song title, weather and traffic reports. The standard car radio will deliver only the station's call letters. Also, the technology will accommodate a service where listeners can record a program and listen to it later. Timko said the station added the new technology because it offers listeners better service and, in the future, the station could provide a secondary radio service on the same frequency. WEMU would maintain its current programming while additional programming, such as classical music, could be added. WEMU used a Corporation for Public Broadcasting grant and other funding sources for equipment changes necessary to transmit this new technology. No listener dollars were used, Timko said. For information, contact WEMU at 487- 2229.

Feature

Aug. 29, 2006 issue
**Governmental
 relations director
 heads
 administrative
 changes**

By Ron Podell



Eastern Michigan University gained a well-known civil and political leader in Freman Hendrix, but lost a longtime vice president and colleague in Courtney McAnuff. These were the key administrative moves that occurred during the summer.

Hendrix, the former deputy mayor of Detroit, is EMU's first-ever chief governmental relations officer. He began his new position Aug. 16.

Hendrix, who reports directly to the president, is responsible for focusing on strengthening relationships with legislators in Lansing and congressmen in Washington, D.C. His Lansing efforts will be focused on the annual appropriations and capital outlay process. In Washington, his efforts on behalf of EMU will focus on the federal earmarking process and other special projects.



Hendrix

"As an alumnus and a person committed to the University, I see this as an opportunity to get more involved at the policy-setting and strategic planning levels," Hendrix said. "At this point in my career, nothing is more important to me than helping move my University forward."

Hendrix, 55, has served in many roles in the public and private sector. He was the assistant Wayne County executive, legislative affairs; chairman, Detroit Public Schools Board of Education; deputy mayor, city of Detroit; and, most recently, president of Advanced Security and Investigative Solutions, Inc.

His numerous awards and honors include: a presidential appointment by former president Clinton to the Commission on National Merit Scholars; "Man of the Year" by the Minority Women's network; the G. Mennen Williams Leadership Award; and the Metropolitan Detroit Leadership for the 21st Century Architects Award.

Hendrix has remained very involved with EMU. He is an active member of EMU's Black Alumni Chapter and was the chairman of the Friends Committee of EMU's first comprehensive capital campaign. He also helped secure a major gift for the restoration of Pease Auditorium, the campus home of the EMU Symphony.

McAnuff, vice president for enrollment services since 1996, will be leaving the University Oct. 1 to take a position as vice president for enrollment

management at Rutgers University, the flagship university of New Jersey.



McAnuff

leaves our campus."

"Courtney will not at all be easy to replace. During his 26 years at EMU, Courtney has presided over significant revisions to the way EMU manages financial aid, admissions, and records and registration services," said EMU President John Fallon. "His tenure has seen consistently strong enrollment, as well as improvements in academic advising and the establishment of new ways to serve students, including the Holman Learning Center and Service EMU. He has supported the EMU and Ypsilanti communities in countless ways, and has become known both on and off campus as a generous and wise colleague. We will all miss Courtney as he

McAnuff first joined EMU in 1980 as director of financial aid and was promoted to director of admissions and financial aid in 1984. He was named dean of admissions and financial aid in 1986, and was promoted to assistant vice president for University Marketing and Student Affairs in 1990. He was named associate vice president for University Marketing and Student Affairs in 1992 before becoming vice president for enrollment services in 1996.

McAnuff received his master's degree from Hofstra University and his bachelor's degree from City College of New York.

Bernice Lindke, associate vice president for enrollment management, will serve as interim vice president for enrollment management. Lindke will have responsibility for admissions, financial aid, records and registration, Service EMU, academic advising, the Holman Learning Center, compliance, and retention initiatives. Lindke received her master's degree in public administration and her bachelor's degree in business administration, both from EMU.



Lindke

Other major changes include:



Kathy Orscheln, associate director of admissions since April 1999, was promoted to interim director of admissions Aug. 11. Orscheln received her master's degree in education counseling and personnel services and her bachelor's degree in political science, both from the University of Missouri-Columbia.

Rhonda DeLong, director of Web Communications, was promoted to interim executive director of University Marketing and Communications May 30.

DeLong

A number of searches for high-level administrative positions are underway or are drawing to a conclusion, said EMU President John Fallon. The searches and their status are as follows:

positions are underway or are drawing to a conclusion, said EMU President John Fallon. The searches and their status are as follows:

- **Chief Information Officer.** This search is nearing its completion. The committee, chaired by Courtney McAnuff, has forwarded the names of three finalists to Don Loppnow, provost and vice president for academic affairs. Arrangements are being made to schedule interviews for the finalists. The position is expected to be filled by late September.
- **Vice President, Business and Finance.** The committee, chaired by Jim Vick, vice president for student affairs, has narrowed the large pool of applicants to approximately 10 and expects to schedule interviews with finalists in early September. Because it is a rolling application process, applications are still being accepted.
- **Director of Diversity and Affirmative Action.** This search is nearing completion. The committee, chaired by Ken McKanders, University legal counsel, has identified five finalists for the position. Campus interviews of the finalists will take place over the next two weeks. The position is expected to be filled by late September.
- **Executive Assistant to the President.** The committee, to be chaired by Darryl Szczepanski, vice president for advancement and executive director of the EMU Foundation, is being organized. Advertisements have been run and a large pool of candidates is being screened for presentation to the committee. The hope is that finalists will visit campus in October and the position will be filled by the end of the fall semester.
- **Executive Director, University Marketing and Communications.** The position has been posted, and the search committee is being formed. Bernice Lindke, interim vice president for enrollment management, will serve as chairperson. The position is expected to be filled by the end of the fall semester.
- **Vice President for Enrollment Management.** This position has been posted, and a search committee will be formed in the coming weeks. Dave Mielke, dean of the College of Business, will serve as chair. The name of the division has been changed from Enrollment Services to Enrollment Management, in recognition of the contemporary structure of strategic management from the first point of individual prospect contact through the student's graduation. At this point, the division will continue to comprise the same departments and units, including admissions, financial aid, records and registration, Service EMU, academic advising, the Holman Learning Center, compliance and the University's retention initiatives.
- **Director of Admissions.** This search will be initiated during the fall semester and will be timed so as to permit EMU's new vice president for enrollment management to participate in the final selection.

College of Arts and Sciences



Foreman

Chris Wood Foreman, professor of communication and theatre arts since 1994, was appointed the new general education director July 1. Foreman assumes the responsibility for administering all aspects of the new general education program that starts in fall 2007.

Dubbed "Education for Participation in the Global Community," the program will focus on:

Preparing students to participate in a global community and become informed world citizens;

- Providing outcomes-based learning. Learning outcomes will be made explicit, helping faculty create learning experiences that help students meet these outcomes;
- Encouraging life-long learning. The new program will help EMU students learn how to learn, which is crucial in an era when it is estimated the average person changes careers up to six times during a lifetime.
- Creating an EMU community. The new program, with a focus on both curricular and co-curricular experiences, will give students much more of a sense of community before, during and after graduation.

"It is through a strong general education foundation that a university provides a learning environment that enhances students' lives, enables them to contribute to multiple communities and better prepares them for the world that awaits them upon graduation," Foreman said.

Since 1994, Foreman had been a professor of communication and theatre arts at EMU. Foreman received her doctorate in organizational communication and her master's degree in communication, both from the University of Kentucky. She received her bachelor's degree in business management from Bowling Green State University.

Jim Knapp, interim director of the Honors College since September 2004, was promoted to permanent director June 1. As interim director, Knapp transitioned the honors program to the Honors College in July 2005. The Honors College is housed on the second floor of Wise Hall. Knapp received his doctorate from the University of Rochester in New York and his master's degree from Temple University.



Knapp

"An important goal of Honors is to help our highest achieving students see opportunities for thought that we can't yet imagine," Knapp said.

communication and her master's degree in communication, both from the University of Kentucky. She received her bachelor's degree in business management from Bowling Green State University.

Jim Knapp, interim director of the Honors College since September 2004, was promoted to permanent director June 1. As interim director, Knapp transitioned the honors program to the Honors College in July 2005. The Honors College is housed on the second floor of Wise Hall. Knapp received his doctorate from the University of Rochester in New York and his master's degree from Temple University.



Knapp

"An important goal of Honors is to help our highest achieving students see opportunities for thought that we can't yet imagine," Knapp said.



George

Laura George, associate dean in the College of Arts and Sciences since August 2004, has been named department head for English language and literature, effective Sept. 1. George replaces **Russell Larson**, who served as department head since October 1999. Russell will return to the faculty, effective Sept. 1.

George was hired as an assistant professor in the English language and literature department in August 1994. She served on and chaired numerous committees, and was the director of the Women's and Gender Studies program.

George received her doctorate and master's degree in English literature, both from Ohio State University. She received her bachelor's degree in Classical Greek language and literature from Bryn Mawr.

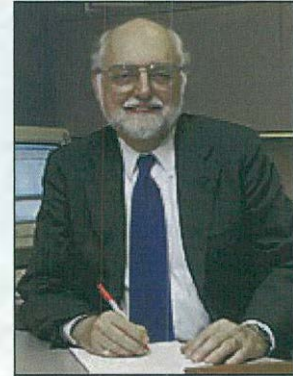
Linda Schott, director of Women's and Gender Studies since July 2003, has been appointed associate dean of the CAS, effective Sept. 1. In addition to her associate dean duties, Schott will serve as interim department head for the department of history and philosophy. Schott received her doctorate and master's degree from Stanford University; and her bachelor's degree from Baylor University.

Diane Winder, professor of music and dance, has been awarded 100-percent faculty release time to join the dean's staff as an assistant to the dean of the college and serve as the college's faculty advising fellow, effective Sept. 1. Winder was hired by EMU in August 1988 to teach cello and theory/literature. Winder received her doctorate of music from Florida State University; her master's degree in music from Converse College in South Carolina; and her bachelor's degree in music from the University of

Pacific.

Heather Holmes returned to the faculty as an associate professor of chemistry, effective May 1. Holmes previously was acting director of EMU's Honors College. Holmes received her doctorate in analytical chemistry from the University of Michigan and her bachelor's degree in chemistry from Eastern Michigan University.

Charles Monsma, associate professor, political science, returned to the faculty April 16. Monsma had served as director for the Institute for Community and Regional Development (ICARD) since 1984. Monsma received his doctorate in political science and his master's degree in public administration, both from the University of Michigan. He received his bachelor's degree in English from Calvin College.



Monsma

College of Education

Shawn Quilter, formerly assistant dean for student academic services, is the new associate dean for academic accountability. He took over his new role July 1. Quilter previously was interim associate dean for academic accountability during May-June 2006. Before that, he was assistant dean for advising from April 2002-May 2006 and a professor of teacher education from August 1996 to April 2002. Quilter received his doctorate in educational research and his master's degree in testing and measurement, both from the University of South Carolina. He received his bachelor's degree in educational psychology from Eastern Michigan University.

Barbara Gorenflo, director of student teaching at EMU since 1999, is the new assistant dean for field experiences. Her appointment was effective July 1. Gorenflo received her doctorate and master's degree in educational leadership, both from Eastern Michigan University; and her bachelor's degree in English from the University of Michigan.

"These two changes are in support of our NCATE accreditation process," said Vernon Polite, dean of the College of Education.

College of Health and Human Services

The College of Health and Human Services underwent a number of administrative changes at the senior leadership level. Some of the moves took place this summer, while others occurred during the spring term.

Marjorie Ziefert, interim director of the School of Social Work since fall

took place this summer, while others occurred during the spring term.

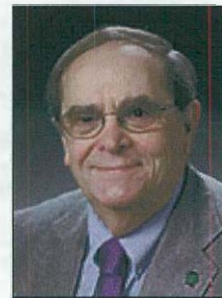
Marjorie Ziefert, interim director of the School of Social Work since fall 2005, was appointed director of the School of Social Work, effective July 1. Ziefert has served as a professor at EMU since 1981. She received her master's degree from Columbia University and her bachelor's degree from New York University.

Murali Nair, interim director of the School of Health Promotion and Human Performance during the 2005-06 academic year, was appointed director of the School of Health Promotion and Human Performance June 1. Nair has been a member of the school's faculty since 1998 and served as graduate coordinator of the school for several years. Nair received his doctorate in motor learning from the University of Virginia. He received his master's degree in physical education and his bachelor's degree in geography, both from the University of Malaya in Kuala Lumpur, Malaysia.

Naomi Ervin was named director of nursing Feb. 1. She replaced **Barbara Scheffer**, who served as interim director from December 2004-February 2006 before returning to the faculty. Before coming to Eastern Michigan, Ervin was assistant dean of Wayne State University's Family, Community and Mental Health Nursing Area from 2001-2006. She also was an associate professor at Wayne State's College of Nursing from 2001-2006. Previously, she was the Decker Chair in Community Health Nursing and associate professor in the Decker School of Nursing at Binghamton University from 1997-2001. Ervin received her doctorate in adult and continuing education/administration, her master's degree in public health nursing and her bachelor's degree in nursing, all from the University of Michigan.

College of Technology

Morell Boone, was named interim dean of the College of Technology, effective May 1. Boone replaced **John Dugger**, who had served as dean since Jan. 1, 2001. Dugger returned to the faculty. Before taking the interim post, Boone had been director of the School of Technology Studies since July 1, 2004. Boone received his doctorate in instructional design, development and evaluation; and his master's degree in library and information studies, both from Syracuse University. He received his bachelor's degree in education from Kutztown State College in Kutztown, Pa.



Boone

John Boyless was named interim director of the School of Technology Studies, effective July 1. Before taking the interim post, Boyless was an associate professor and coordinator of the industrial distribution program since Sept. 1, 1995. Boyless received his master's degree in educational

leadership and his bachelor's degree in elementary education, both from Eastern Michigan University.



Buchanan

Polly Buchanan was named interim associate dean of the College of Technology, effective Sept. 1. Buchanan replaces **Max Kanagy**, the previous interim associate since Jan. 1, 2006. Kanagy will return to the faculty. Buchanan previously was associate professor in the hotel and restaurant management program, a position she was in since Sept. 1, 2005. Buchanan received her doctorate in higher education administration from the University of Michigan; her master's degree in institutional administration from Michigan State University; and her bachelor's degree in food and nutrition from Purdue University.

Feature

Aug. 29, 2006 issue

Forty-one new tenure-track faculty start this fall

By Ron Podell

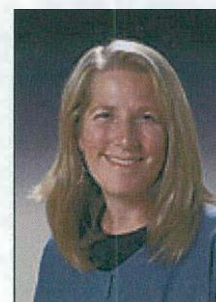


The Eastern Michigan University Board of Regents approved the appointments of 41 new tenure-track faculty at its regular meeting June 20.

Of the 41 appointments, 22 are female (55 percent) and 19 are male (46 percent). Demographics of the group include 30 Caucasian (73 percent), four Hispanic (10 percent), three African American (7.5 percent), three Asian-American (7.5 percent) and one Native American (2 percent). These new tenure-track faculty appointments are effective Aug. 30.

New tenure-track faculty and their departments are:

Anthony Aristar, of Ann Arbor, professor, English language and literature. Prior to coming to EMU, Aristar was at Wayne State University from 1998-2006, most recently serving as head of the LINGUIST Technology Center. Aristar received his doctorate in linguistics from the University of Texas-Austin; his master's degree in linguistics from the University of Chicago; and his bachelor's degree in Middle Eastern Studies and Arabic from the University of Melbourne, Australia.



Booth

Susan Badger Booth, of Maumee, Ohio, assistant professor, communication and theatre arts. Booth was a full-time instructor in the department of theatre and film at Bowling Green State University from 2004-2006. Booth received her master's degree in theatre management from Columbia University and her bachelor's degree in scene design from Boston University.



Barr

Mark Barr, of Nashville, Tenn., assistant professor, English language and literature. Barr previously was an instructor and lecturer in the English department at Vanderbilt University from 1999-2006. Barr received his doctorate in English from Vanderbilt University; his master's degree in English Romantic Studies from Oxford University; and both his Juris Doctorate and bachelor's degree in English and philosophy from the University of Victoria.

Sally Burton-Hoyle, of Brighton, assistant professor, special education. Burton-Hoyle most recently was executive director of the Autism Society of Michigan from 1994-2006. Hoyle received her doctorate in special education from the University of Idaho; her master's degree in special education from the University of Kansas; and her bachelor's degree in elementary education from Avila College.



Burton-Hoyle

Bruce Carroll, of Asheville, N.C., assistant professor, political science. Carroll most recently was an assistant professor of political science at Western Carolina University from 2002-

2005. Carroll received his doctorate of philosophy in political science from the University of Houston; his Juris Doctorate from South Texas College of Law; and his bachelor's degree in history from Saginaw Valley State University.



Joan Cowdery, of Ann Arbor, assistant professor, School of Health Promotion and Human Performance. Before coming to EMU, Cowdery was an assistant professor in the School of Health Professions and Studies at the University of Michigan-Flint from 2001-2006. Cowdery received her doctorate in health education/promotion from the University of Alabama; her master's degree in physical education, health and recreation studies from Purdue University; and her bachelor's degree in health education from Ohio State University.

Cowdery

Stephanie Daza, of Dublin, Ohio, assistant professor, teacher education. Prior to coming to EMU, Daza was a graduate teaching associate at Ohio State University from 2001-2006. Daza received both her doctorate in educational policy and leadership, and her master's degree in cultural studies in education from Ohio State University. She received her bachelor's degree in English from Otterbein College.



Daza

Marisa Ensor, of Ypsilanti, assistant professor, sociology, anthropology and criminology. Ensor has been at Eastern Michigan University since 2004 and had previously taught courses at Rollins College and the University of Florida. Ensor received both her doctorate in anthropology and her master's degree in Latin American Studies from the University of Florida. She received her bachelor's degree in anthropology and sociology from Florida International University.



Amy Flanagan Johnson, of Pembroke, N.C., assistant professor, chemistry. Johnson previously was a lecturer of chemistry courses at the University of North Carolina at Pembroke from 2004-2006. Johnson received both her doctorate in curriculum and instruction (science education) and her master's degree in chemistry from Purdue University. She received her bachelor's degree in chemistry from Knox College in Galesburg, Ill.

Johnson

Derrick Fries, of Clarkston, assistant professor, special education. Fries previously was deputy superintendent at Avondale Schools from 1996-2006. Fries received his doctorate in educational administration from the University of Michigan; his master's degree in special education from Oakland University and his bachelor's degree in teacher education from Michigan State University.

Faison Gibson, of Ann Arbor, assistant professor, computer information systems. Most recently, Gibson was an assistant professor of computer and information systems at the University of Michigan from 1997-2006. He received his doctorate in information systems from Carnegie Mellon University; a master's degree in business administration from the University of Pennsylvania; and a bachelor's degree in linguistics and French from Georgetown University.



Gibson



Suzanne Gray, of Ypsilanti,

was an assistant professor of computer and information systems at the University of Michigan from 1997-2006. He received his doctorate in information systems from Carnegie Mellon University; a master's degree in business administration from the University of Pennsylvania; and a bachelor's degree in linguistics and French from Georgetown University.

Gibson



Suzanne Gray, of Ypsilanti, assistant professor, Halle Library. Prior to EMU, Gray worked at the University of Michigan Library from 1999-2006. Gray received her master's degree in information from the University of Michigan and a bachelor's degree in English from Miami (Ohio) University.

Haque

Rubina Haque, of Orchard Lake Village, assistant professor, School of Health Sciences. Haque previously was a clinical dietitian at Huron Valley Hospital from 2005-06 and a part-time faculty member at Wayne State University. Haque received both a doctorate and

master's degree in nutrition and food science, from Wayne State University.

Benedict Ilozor, of Hampton, Va., associate professor, School of Engineering Technology. Prior to coming to EMU, Ilozor was an associate professor of architecture at Hampton University from 2003-2005. Ilozor received his doctorate in design, architecture and building from the University of Technology in Sydney, Australia. He received both his master's and his bachelor's degree in architecture from the University of Nigeria.

Stephen Jefferson, of Omaha, Neb., assistant professor, psychology. Jefferson most recently was an assistant professor of psychology at Creighton University from 2003-2006. Jefferson received both a doctorate and master's degree in clinical psychology from Michigan State University. He received his bachelor's degree in psychology from Florida A&M University.



Jefferson

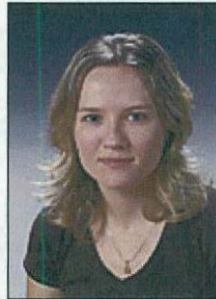


Tsuo-Sui (Annie) Kao, of Ann Arbor, assistant professor, School of Nursing. Before coming to EMU, Kao was a staff nurse at the University of Michigan Medical Center from 1999-2003. Kao received her master's degree in community health nursing from the University of Michigan and her bachelor's degree in nursing from Eastern Michigan University.

Kao

Jennifer Kellman-Fritz, of Huntington Woods, Mich., assistant professor, School of Social Work. Kellman-Fritz has been a lecturer in Eastern Michigan University's School of Social Work since 1999. She has been executive director of the nonprofit Bear Hug Foundation from 2000-2006. She received her doctorate in social work and sociology; separate master's degrees in sociology and social work; and her bachelor's degree in sociology, all from the University of Michigan.

Jeannette Kindred, of Poughkeepsie, N.Y., assistant professor, communication and theatre arts. Kindred most recently was an assistant professor of communication at Marist College from 2000-2006. Kindred received her doctorate in philosophy and communication from Wayne State University; her master's degree in communication from Eastern Michigan University; and her bachelor's from Central Michigan University.



Natasa Kovacevic, of Atlanta, Ga., assistant professor, English language and literature. Prior to coming to EMU, Kovacevic was a literature instructor at the University of Florida from 2002-2006. Kovacevic received her doctorate in English from the University of Florida; her master's degree in English from Miami (Ohio) University; and her bachelor's degree in English language and literature from the University of Kentucky.

Kovacevic

Thomas Kovacs, of Newport News, Va., assistant professor, geography and geology. Before coming to EMU, Kovacs was an assistant research professor at Hampton University from 2000-2006. Kovacs received both his doctorate and master's degree in meteorology from Penn State University. He received his bachelor's degree in meteorology from Northern Illinois University.

William LaGore, of Tallahassee, Fla., assistant professor, accounting and finance. LaGore most recently was an accounting and finance instructor at Florida State University from 2001-2006. LaGore received his master's degree in business administration from the University of Wyoming and a bachelor's degree from Adrian College.



LaGore

Aaron Liepman, of East Lansing, assistant professor, biology. Prior to EMU, Liepman was a student mentor/adviser at Michigan State University from 2002-2006. Liepman received his doctorate, master's and bachelor's degree in biology, all from the University of Michigan.



Diane Parfitt, of Ypsilanti, assistant professor, leadership and counseling. Parfitt most recently was an assistant professor of counseling at Oakland University from 2004-2006. Parfitt received her doctorate in counselor education and supervision from the University of Toledo. She earned separate master's degrees in counseling and special education, and a bachelor's degree in special education, from Eastern Michigan University.

Parfitt

Tamara Penix Sbraga, of Midland, assistant professor, psychology. Prior to EMU, Sbraga was an assistant professor of clinical psychology at Central Michigan University from 2001-2006. Sbraga received her doctorate in clinical psychology from the University of Nevada, Reno; her master's degree in community psychology from New York State University; and her bachelor's degree in psychology

biology. Prior to EMU, Liepman was a student mentor/adviser at Michigan State University from 2002-2006. Liepman received his doctorate, master's and bachelor's degree in biology, all from the University of Michigan.

LaGore



Diane Parfitt, of Ypsilanti, assistant professor, leadership and counseling. Parfitt most recently was an assistant professor of counseling at Oakland University from 2004-2006. Parfitt received her doctorate in counselor education and supervision from the University of Toledo. She earned separate master's degrees in counseling and special education, and a bachelor's degree in special education, from Eastern Michigan University.

Parfitt

Tamara Penix Sbraga, of Midland, assistant professor, psychology. Prior to EMU, Sbraga was an assistant professor of clinical psychology at Central Michigan University from 2001-2006. Sbraga received her doctorate in clinical psychology from the University of Nevada, Reno; her master's degree in community psychology from New York State University; and her bachelor's degree in psychology from Kent State University.

Donald Peurach, of Ann Arbor, assistant professor, leadership and counseling. Peurach was in a number of positions at the University of Michigan from 1994-2006, most recently as a senior research area specialist in the School of Education from 2005-2006. Peurach received both his doctorate in educational foundations and policy; and his master's degree in public policy from the University of Michigan. He received his bachelor's degree in computer science from Wayne State University.



Peurach



Christopher Robbins, of Wyomissing, Pa., assistant professor, teacher education. Before coming to EMU, Robbins was an assistant professor of education at Pennsylvania State University from 2005-2006. Robbins received his doctorate in philosophy; his master's degree in education; and his bachelor's degree in elementary and kindergarten education, all from Pennsylvania State University.

Robbins

Andrew Ross, of Bethlehem, Pa., assistant professor, mathematics. Ross most recently was an assistant professor at LeHigh University from 2002-2006. Ross received both his doctorate in industrial engineering and operations research, and his master's degree in operations research from the University of California-Berkeley. He received his bachelor's degree in mathematics from Harvey Mudd College.

degree in computer science from Wayne State University.

Peurach



Robbins

Christopher Robbins, of Wyomissing, Pa., assistant professor, teacher education. Before coming to EMU, Robbins was an assistant professor of education at Pennsylvania State University from 2005-2006. Robbins received his doctorate in philosophy; his master's degree in education; and his bachelor's degree in elementary and kindergarten education, all from Pennsylvania State University.

Andrew Ross, of Bethlehem, Pa., assistant professor, mathematics. Ross most recently was an assistant professor at LeHigh University from 2002-2006. Ross received both his doctorate in industrial engineering and operations research, and his master's degree in operations research from the University of California-Berkeley. He received his bachelor's degree in mathematics from Harvey Mudd College.

Amy Sacksteder, of Chicago, Ill., assistant professor, art. Prior to coming to EMU, Sacksteder taught "Fundamentals of Design" and "3-D Design" at the Illinois Institute of Art from 2004-2006 and "2-D Design" at EMU in 2006. Sacksteder received her master's of fine art degree in painting from Northern Illinois University and her bachelor's degree from the University of Dayton.



Sacksteder

Sheila Sasser, of Taylor, assistant professor, marketing. Sasser was most recently a senior lecturer in marketing at Wayne State University from 2000-2006. Sasser received her doctorate in interdisciplinary marketing and communication; and her master's and bachelor's degree in business administration, all from Wayne State University.



Shapla

Tanweer Shapla, of Bowling Green, assistant professor, mathematics. Shapla had been a graduate teaching assistant in mathematics and statistics at Bowling Green State University from 2002-2006. Shapla received a doctorate in statistics from Bowling Green and a master's degree in actuarial science from Ball State University. She also received a master's and a bachelor's degree in mathematics, both from Jahangirnagar University.

Tsai-Shan (Sam) Shen, of Tempe, Ariz., assistant professor, English language and literature. Shen most recently was a graduate teaching associate at Arizona State University from 2001-2006. Shen received his doctorate in communication from Arizona State University; his master's degree in communication from the University of Colorado at Denver and his bachelor's degree in psychology from Soochow University, in Taipei, Taiwan.

Phil Simmons, of New York City, assistant professor, communication and theatre arts. Simmons has been a freelance audition coach, a director, actor and a choreographer throughout the country. He was a teaching assistant at the University of Georgia, Langston University and Oklahoma State University. Simmons received a master's of fine arts degree in acting from the University of Georgia and his bachelor's degree in theatre and

English from Oklahoma State University.

Solange Simoes, of Ann Arbor, assistant professor, sociology, anthropology and criminology. Simoes most recently was an adjunct faculty associate at the University of Michigan's Center for Political Studies Institute for Social Research from 1995-2006. Simoes received her doctorate in sociology from the University of London and both a master's in political science and a bachelor's in social sciences from Federal University of Minas Gerais, Brazil.



Simoes



Robert Stevens, of Clawson, assistant professor, University Library. Stevens previously was a lecturer/information services librarian at Eastern Michigan University from 2005-2006. Stevens received a master's degree in library and information science from Wayne State University and a bachelor's degree from Eastern Michigan University.

Stevens

Barbara Walters, of Tucson, Ariz., assistant professor, School of Social Work. Walters most recently was an adjunct faculty member in the School of Social Work at Arizona State University from 2003-2005. Walters received her doctorate in social work from Boston College; her master's degree in social work from the University of Illinois; and her bachelor's degree in communication studies from DePaul University.

Mark Waymire, of Ypsilanti, assistant professor, music and dance. From 2003-2006, Waymire was a full-time lecturer of music at Eastern Michigan University and is the associate director of bands at EMU. Waymire received his master's degree in instrumental conducting and music history from Louisiana State University and his bachelor's degree in music education from Sam Houston State University.

Linda Williams, of Southfield, assistant professor, teacher education. Williams most recently was an eighth grade teacher at the Detroit Waldorf School from 2000-2006. Williams received her doctorate in curriculum teaching and educational policy from Michigan State University; her master's degree in education from the University of Detroit Mercy; and her bachelor's degree from Michigan State University.

Gregg Wilmes, of Bismarck, N.D., assistant professor, chemistry. Before coming to EMU, Wilmes had been a postdoctoral fellow at the University of California-Berkeley's Lawrence Berkeley National Laboratory Material Sciences Division from 2004-2006. Wilmes received his doctorate in organometallic and polymer chemistry from Stanford University and his bachelor's degree from the University of Notre Dame.



Wilmes

Melissa Witkow, of Los Angeles, Calif., assistant professor, psychology. Before coming to EMU, Witkow had been a psychology instructor at UCLA and was a teaching assistant there from 2001-2004. Witkow received her doctorate and master's degree in developmental psychology from UCLA and her bachelor's degree in psychology from Pomona College.

James Zboja, of Tallahassee, assistant professor, marketing. Previously,

Zboja was a graduate teaching assistant at Florida State University from 2003-2006 and a graduate research assistant there from 2002-2006. Zboja received his doctorate in marketing from Florida State University, and both his master's degree in business administration and his bachelor's degree in marketing from Middle Tennessee State University.

Laura Zionts, of Shaker Heights, Ohio, assistant professor, special education. Zionts most recently was an associate professor of special education at Kent State University from 2002-2006. Zionts received her doctorate in philosophy from the University of North Texas; her master's degree in education from San Diego State University; and a bachelor's degree from the University of San Diego.

The Eastern Michigan University Board of Regents approved the appointments of 19 staff at its regular meeting June 20.

Of the 19 appointments, seven (37 percent) are female and 12 (63 percent) are males. The group includes 15 Caucasians (79 percent), three African Americans (16 percent) and one Asian (5 percent).

Those receiving appointments are:

Darryl Sczepanski, of Saginaw, vice president for advancement and executive director, EMU Foundation. Before coming to EMU, Sczepanski was vice president, university advancement at Kettering University from 1998-2006. Prior to that, he was director of advancement in the College of Business Administration at the University of Illinois at Chicago. Sczepanski received his master's degree in public relations/journalism from Ball State University and his bachelor's degree in journalism/business administration from Central Michigan University.



Sczepanski



Derrick Gragg, Jr., of Fayetteville, Ark., athletic director, intercollegiate athletics. Prior to coming to EMU, Gragg was deputy athletic director, senior associate athletic director and associate athletic director at the University of Arkansas from 2000-2006. Before that, he was assistant athletic director at the University of Michigan from 1997-2000. Gragg received his doctorate in education from the University of Arkansas. He received both his master's degree in sports administration and his bachelor's degree in human development from Vanderbilt University.

Gragg

James O'Neil, of Baltimore, Md., assistant football coach, intercollegiate athletics. Before coming to Eastern Michigan, O'Neil was a defensive backs/punt return coach for Towson University from 2005-2006. Prior to that, he was a defensive graduate assistant/assistant defensive backs coach at Northwestern University from 2003-2005. O'Neil received his master's degree in science from the University of Albany and his bachelor's degree in sports management/business administration from Towson University.

Jarvis Adams, of Ypsilanti, assistant football coach, intercollegiate athletics. Previously, Adams was a defensive graduate assistant coach for Eastern Michigan University from 2004-2006. Adams received his bachelor's degree in communication studies from Northwestern University.

Aug. 29, 2006 issue
**New vice president
for advancement
heads 19 new staff
appointments**

By Ron Podell



David Trakul, of Grand Ledge, employee relations director, human resources. Previously, Trakul was a labor relations specialist with the Lansing School District from 2002-2006. Before that, he was a labor relations specialist for the State of Michigan Family Independence Agency from 1985-2002. Trakul received his master's degree in public administration from Wayne State University and his bachelor's degree from the Detroit Institute of Technology.



Sheilah Larnhart, of Newport, administrative secretary, University Marketing. Before coming to EMU, Larnhart was a board member and corresponding secretary to the president of the board of Southeastern Michigan Veterans Stand Down, Inc., from 2003-2006. Prior to that, Larnhart served in a variety of positions, most notably office coordinator/personal secretary to the dean of nursing at Madonna University from 1995-2002. Larnhart received her bachelor's degree in business administration from Siena Heights University.

Trakul

Larnhart

Michael Yauk, of Whitmore Lake, program associate, information assurance platform, Center for Regional and National Security. Previously, Yauk was an instructor and electronic crimes facilitator/network administrator for the Center for Regional and National Security from 2003-2006. Yauk received his bachelor's degree in network and information technology administration from Eastern Michigan University.

Jacqueline Nichols, of Sterling Heights, project coordinator, The Learning Center. Before coming to EMU, Nichols was a student counselor at Oakland University from 2005-2006. Prior to that, she was agency coordinator for Communities in Schools in Detroit from 2001-2005. Nichols received her bachelor's degree in applied psychology from Southwest Texas State University.

William Harris, of Chelsea, Web and technical operations assistant, WEMU. Previously, Harris was a writing tools engineer and technical writer for Apple Computer, Inc., from 1990-2004. Harris received his bachelor's degree in English language and literature from the University of Michigan.

Keith Jason, of Westland, financial aid adviser, financial aid. Previously, Jason was a customer service representative for Chrysler Financial Services from 2005-2006. Prior to that, he was a program coordinator for the Center for Multicultural Affairs at Eastern Michigan University from 2003-2005. Jason received his master's degree in educational leadership and his bachelor's degree in business administration, both from Eastern Michigan University.

Michael Buchholz, of Michigan Center, Web analyst/programmer II, ICT-enterprise applications and integration. Previously, Buchholz was a Web developer for PowerOne Media in East Greenbush, N.Y., during 2005. Before that, he was a Web developer for the University of Florida's Levin College of Law from 2004-2005. Buchholz received his bachelor's degree in liberal arts from Siena Heights University.

Jian Wang, of Ypsilanti, senior technology analyst, Institutional Research

and Information Management. Previously, Wang was a Unix/Window systems administrator for Affiliated Computer Services, Inc., from 2005-2006. Before that, he was a systems/applications administrator at Computer Task Group, Inc., in Southfield, from 2002-2005. Wang received his master's degree and bachelor's degree in computer science, both from Shaanxi Normal University in Xi'an, China. He also has another master's degree in computer science from Eastern Michigan University.

Others receiving appointments are:

Tracy Pytlak, of Redford, payroll practitioner I.

Sharyn Hoard, of Plymouth, secretary II, School of Health Sciences.

Camille Humble, of Milan, postal clerk, administrative support services.

Renee Gauthier, of Ypsilanti, police dispatcher, parking.

James McKee, of Saline, custodian, custodial services.

Robert Dawson, of Adrian, grounds person, grounds, walks and roadways.

Cherie Burkheiser, of Ann Arbor, accountant I, grant accounting.

Feature

FOCUS EMU Online

This year's Campus Life activities schedule focuses on what most college students enjoy: hanging out, watching movies and listening to music.

Aug. 29, 2006 issue
Campus Life
schedule includes
movie lineup, Pirate
Week and open mic
nights

Due in part to the opening of the new student center Nov. 6, Campus Life takes an internal approach to activities this year, giving the many talented speakers and entertainers already on campus a chance to shine. Students can hear advice from a coach, listen to a faculty member sing or watch their fellow students slam at open mic night.

By Leigh Soltis

"Campus Life is operating differently this year. We used to do a large performing arts series with outside speakers and entertainers," said Melissa Ginotti, director of Campus Life. "We're not doing that this year. Budget cuts are one reason, but we also are taking advantage of the opportunities for change associated with the new student center."

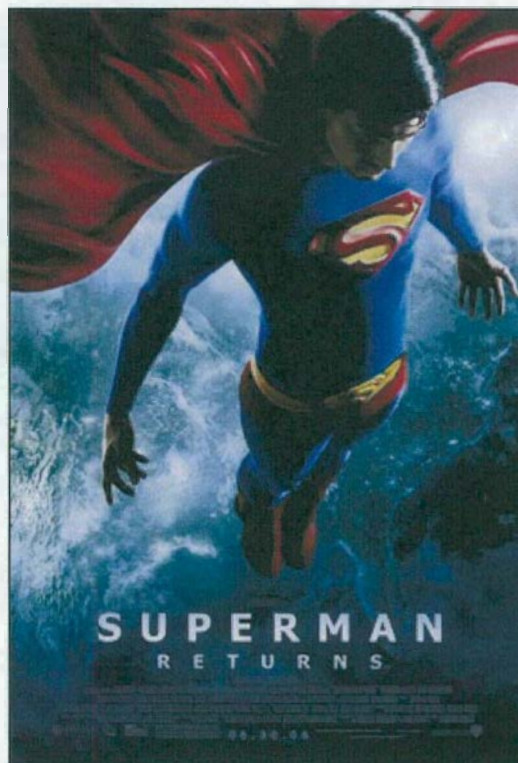
As requested by the University's Retention Task Force, more evening and weekend events are scheduled to keep students involved after the school day has ended.

"We hope to target adult learners, too," said Ginotti. "We want families with young children to find something they can enjoy."

This year's events include:

One new program this year is the **Friday Night & Monday Midday Movie Series**.

Campus audiences can enjoy popular films — every Friday night and Monday during the day — before they're available for home rental. Movies are free and open to all EMU students, faculty, staff and their family and friends. Friday night movies will be shown at 7:30 p.m. at University Park in September; at 7 and 9:30 p.m. in various campus locations during October; and at 7 and 9:30 p.m. in the EMU Student Center Auditorium beginning in November. Monday mid-day movies will be shown 10 a.m., 12:15 p.m., 2:30 p.m. and 5 p.m. in the lower level of McKenny Union in September and October, and in the EMU Student Center Auditorium beginning in November. Movies scheduled include "X-Men: The Last Stand," "Pirates of the Caribbean: Dead Man's



MOVIE MADNESS: Campus Life will be hosting a Friday Night & Monday Midday Movie Series. Films, including



Chest," "Superman Returns," "Over the Hedge," "The DaVinci Code," "The Waterboy," "Saw II," "Tal adega Knights," "Ant Bully" and "You, Me and Dupree."

"Superman Returns," will be viewed at the new student center shortly before they are released on DVD.

The showing of "Pirates of the Caribbean" coincides with Pirate Week, Sept. 18-23.



SHIVER ME TIMBERS: Pirate Week will be celebrated again, with a number of activities scheduled Sept. 18-23.

auditions for volunteer performers are scheduled Monday, Sept. 11, 5-7 p.m.. McKenny Union.

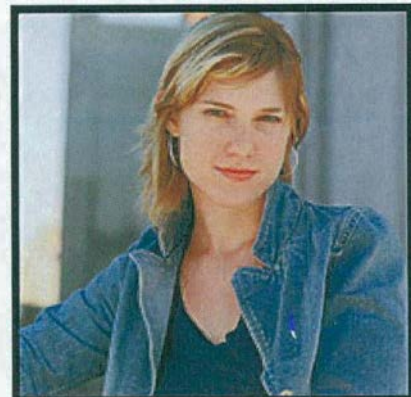
Back by popular demand for its second year, **Pirate Week** is a weeklong celebration of International Talk Like a Pirate Day. Activities include a campus scavenger hunt complete with treasure map and pirate prizes, craft activities including paper bag parrots and decorating an eye patch, pirate poker night, capture the flag, pirate movies, a pirate parade and more. All departments and student organizations are invited to join in the fun. Any department or organization interested in adding an event to the week's schedule should contact Campus Life at 487-3045.

Thursday Evening Tunes

showcases the musical stylings of talented EMU students, faculty and staff as well as local bands and soloists. Performances will take place every Thursday evening from 7-9 p.m., in the dining room of McKenny Union. Thursday Evening Tunes will move to the new student center when that facility opens Nov. 6. Open

EMU's national slam award recipients, the Poetry Society, host the **National Collegiate Poetry Slam** on campus April 4-8. For each month leading up to the big slam, the Poetry Society will "spit" during open mic sessions in the dining room of McKenny Union/EMU Student Center. Open mic nights are scheduled 7 p.m., Sept. 13 and 27; Oct. 11 and 25; and Nov. 8 and Dec. 6.

Anya Kamenetz, 25-year-old "Village Voice" columnist and author of "Generation Debt: Why Now is a Terrible Time to be Young," is scheduled to speak Thursday, Sept. 28, 7 p.m., McKenny Union Ballroom. Kamenez will speak to students about debt management, personal finances and today's economy, and encourage students to take an active role in advocating for their financial futures.

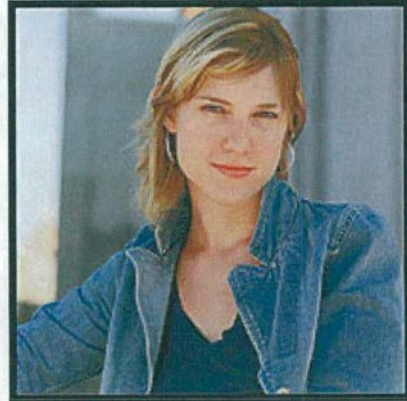


Kamenetz

Eastern Excursions are scheduled again this year, beginning with a trip to the Tigers' final regular season home game against Kansas City Saturday, Sept. 30. Buses depart at 6 p.m. and return at 11 p.m. Cost is \$15 for EMU

EMU's national slam award recipients, the Poetry Society, host the **National Collegiate Poetry Slam** on campus April 4-8. For each month leading up to the big slam, the Poetry Society will "spit" during open mic sessions in the dining room of McKenny Union/EMU Student Center. Open mic nights are scheduled 7 p.m., Sept. 13 and 27; Oct. 11 and 25; and Nov. 8 and Dec. 6.

Anya Kamenetz, 25-year-old "Village Voice" columnist and author of "Generation Debt: Why Now is a Terrible Time to be Young," is scheduled to speak Thursday, Sept. 28, 7 p.m., McKenny Union Ballroom. Kamenetz will speak to students about debt management, personal finances and today's economy, and encourage students to take an active role in advocating for their financial futures.



Kamenetz

Eastern Excursions are scheduled again this year, beginning with a trip to the Tigers' final regular season home game against Kansas City Saturday, Sept. 30. Buses depart at 6 p.m. and return at 11 p.m. Cost is \$15 for EMU students and tickets go on sale Sept. 6. Tickets are \$35 for faculty and staff, and go on sale Sept. 13. The cost includes a game ticket, food voucher and motor coach transportation.

A trip to Cedar Point's **Halloweekends** is scheduled Saturday, Oct. 14. Buses depart at 10 a.m. and return at 12:30 a.m. Tickets are \$35 for EMU students and go on sale Sept. 6. Tickets are \$55 for faculty and staff, and go on sale Sept. 13. The cost includes a ticket to the park, a \$5 food voucher and motor coach transportation.

A whole day of shopping fun, great dining options and entertainment at **Great Lakes Crossing** in Auburn Hills is scheduled Dec. 9. Buses depart at 9:30 a.m. and return at 6 p.m. Cost is \$10 per student and tickets go on sale Sept. 6. Tickets are \$18 for faculty and staff, and go on sale Sept. 13.

A trip to see the **Detroit Pistons** play at The Palace will be scheduled this winter. Details have not yet been announced.

A series of monthly **"Saturday Night Life"** events begins in October, featuring a variety of activities including live bands, DJs, karaoke and board and video gaming. These Saturday night activities are designed to provide a safe, alcohol-free entertainment alternative. **Halloween Harvest Night** kicks off the event series Oct. 14, in McKenny Union,

followed by **Super Hero Night** Nov. 11; and a **Pajama Party** Dec. 9. The events continue in 2007 with a **Hawaiian Beach Night** Jan. 20; a **Spring Fling** Feb. 17; a **St. Patrick's Day** event March 17 and **Greek Town Casino Night** April 14. Events run 10 p.m.-2 a.m.



Mehuron

If you were to give your absolutely last lecture ever, what would you say? The **Last Lecture Series** asks faculty members to share their most important lessons, as if it was their last. Kate Mehuron, from the department of history and philosophy, will speak Oct. 11, 7 p.m. Jeff Bernstein, political science, will present "The Essential Wisdom of Norm Peterson," Nov. 14, 7:30 p.m., and Nov. 16, 11 a.m. Heather Neff, English language and literature, will present "Forbidden Zones" and Ron Woods, African-American studies, also is scheduled to speak.

Learn about leadership, inspiration, motivation and teamwork from EMU athletic team coaches in the **Coaches Leadership Lecture Series**. These lectures are targeted to student organizations and their members, as well as the broad campus community. Head Football Coach Jeff Genyk will speak Oct. 5, 6 p.m., in the team room of the Convocation Center. Kim Berrington, volleyball head coach, presents "Being a Leading Woman," Oct. 17, 7 p.m., in the Stadium Club of the Convocation Center. Athletic Director Derrick Gragg will speak Nov. 7, 7 p.m., in the auditorium of the EMU Student Center.



Genyk



Boggs

Long-time civil rights and social justice activist **Grace Lee Boggs** is the **Martin Luther King, Jr. Day** keynote speaker. Born to Chinese immigrant parents in 1915, Boggs has been an activist in many social movements of this century, including labor, civil rights, black power, Asian American, women's and environmental justice. Boggs and husband, James, an African American labor activist, worked together on grassroots groups and projects in Detroit for more than 40 years. At the President's Luncheon, Boggs will present "This is the Time to Grow our Souls," Monday, Jan. 16, 2007, noon, in the EMU Student Center Grand Ballroom. Her keynote, which will draw on the essay, "Thinking Dialectically Toward Community," will be presented at 3 p.m. in Pease Auditorium.

For more information about events and activities, call Campus Life at 487-3045.

Feature

FOCUS EMU
Online

Aug. 29, 2006 issue

**Shakespeare,
musical pirates
headline EMU
Theatre season**

By Leigh Soltis



Beginning in comedy and ending in drama, with some Shakespeare and musical pirates in between, the upcoming EMU Theatre season runs the gamut of entertainment.

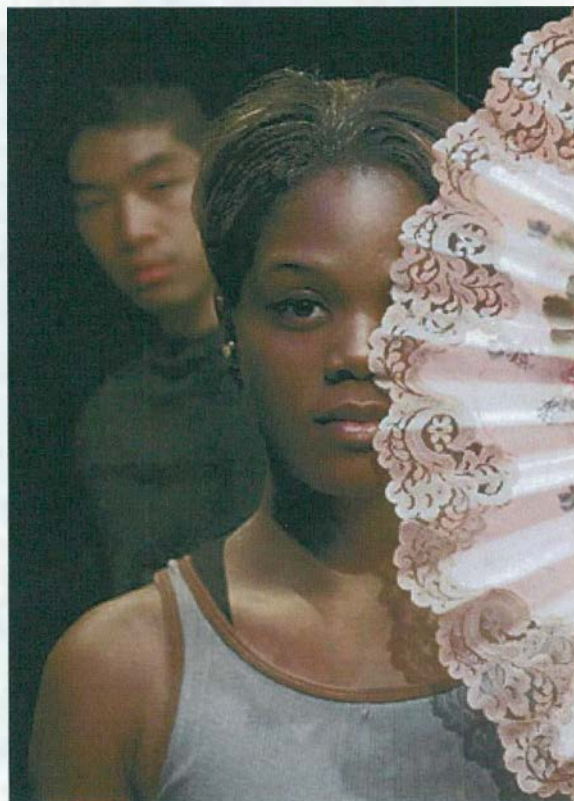
"The 2006-2007 EMU Theatre season allows audiences to choose from a wide variety of theatrical tastes: farce, drama, Shakespeare, slapstick, musicals, plays with music. There's something for everyone to try," said Pam Cardell, head of marketing and promotions for EMU Theatre. "We're also excited to try some new things this year like 'First Friday Previews' and 'Nine at Nite' student bargain shows on the first Saturday of each run."

This season includes:

Audiences take a peek behind the scenes in **"Noises Off,"** a hilarious farce of slamming doors, dropping pants, shocking affairs and quick wit. This play-within-a-play, written by Michael Frayn and directed by John Seibert, is scheduled Oct. 13, 19-21 at 8 p.m.; Oct. 14 at 5 p.m. and 9 p.m.; and Oct. 15 at 2 p.m., at Quirk Theatre.

"When Night Dogs Run" features scenes from the works of William Shakespeare, directed by Gillian Eaton, award-winning actress and past EMU Thelma McAndless Scholar. The production celebrates Shakespeare in action, as EMU Theatre students become the wicked woman, dangerous man, fighter, trickster or joker that the Bard intended them to be. The show is scheduled Nov. 18 at 5 p.m. and 9 p.m.; and Nov. 19 at 2 p.m., in Sponberg Theatre.

"Treasure Island" is a panto-musical based on the story by Robert Louis Stevenson. This slapstick adventure is loaded with pirates and dames, song and dance, and tricks and treasure. Young or old, landlubber or ship's mate, everyone is sure to enjoy this musical, written by Jeff Duncan with music by R. MacKenzie Lewis. Phil Simmons directs. Performance dates are



EXPLORING SHAKESPEARE: Jonathon Kung as Orsino and Afton Williamson as Viola act out a scene from last year's production of "Twelfth Night." EMU Theatre will twice visit the Bard this year, when it acts out scenes from Shakespeare in "When Night Dogs Run" in September and performs "The Tempest" in

Dec. 2 and 9 at 11 a.m. **January 2007.**
and 2 p.m.; Dec. 3 at 2
p.m.; and Dec. 8 at 8 p.m., in Quirk Theatre.

William Shakespeare's **"The Tempest,"** directed by Lee Stille, is scheduled Jan. 25-26 at 8 p.m., and Jan 27 at 5 p.m. and 9 p.m., in Sponberg Theatre. Greed and treachery have taken over and the world is in disarray. The forces of nature are summoned and a tempest rages as wrongs are righted and chaos becomes harmony in this Shakespearean classic.

"A Streetcar Named Desire" captures the desires and despairs of Blanche, Stanley and Stella as they endure oppressive heat, madness and each other until a brutal confrontation shatters their illusion. Tennessee Williams's Pulitzer prize-winning masterpiece, directed by George Bird, is scheduled Feb. 9, 15-17, at 8 p.m.; Feb. 10 at 5 p.m. and 9 p.m.; and Feb. 11 at 2 p.m., in Quirk Theatre.

"The Good Person of Setzuan" features moral dilemma, one person, two faces and a last chance for survival as a soul struggles against the mores of society. This poignant play, written by Bertolt Brecht and adapted by Tony Kushner, is charged with theatricality, humor, song and poetry. The show is directed by Wallace Bridges, and will be presented at Quirk Theatre March 23, 29-31 at 8 p.m.; March 24 at 5 p.m. and 9 p.m.; and March 25 at 2 p.m.

Ticket prices range from \$6-\$14 and can be purchased through the Quirk Box Office and the Convocation Center. For more information, call the EMU Theatre Box Office at 487-1221

Visit www.emich.edu/public/cta/ted or www.myspace.com/emutheatre for further information about EMU Theatre, including new classes, ticket discounts and more.

Feature

FOCUS EMU
Online

Aug. 29, 2006 issue
Art exhibits will be staged at two venues this year

By Leigh Soltis



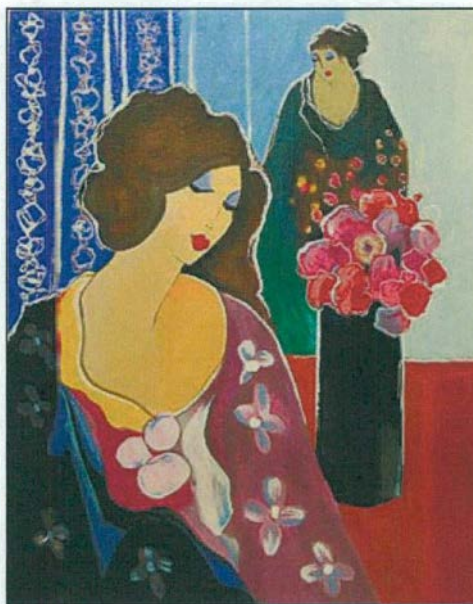
A generous gift, West Coast graphic design, comic art and the opening of a new gallery highlight the art department's fall schedule.

Work from international artists, as well as EMU students, will be showcased in two galleries this year. The new 1,500-square-foot University Art Gallery, located on the main floor of the new Student Center, will host its first exhibit this November. Ford Gallery will remain open in addition to the new gallery.

"The art department's Artists and Exhibitions Committee dedicated the past 15 months to planning and preparing a schedule of gallery-related activities for the 2006-07 academic year," said Larry Newhouse, gallery program director. "The result is a dynamic program, designed to meet the needs of our student body as well as educate and entertain our campus community. I am looking forward to an exciting year of outstanding art in both the Ford Gallery and the new University Gallery."

The fall exhibition schedule includes:

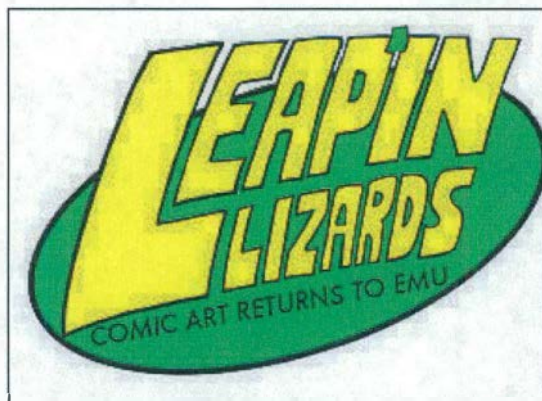
"The Gifts of Art Exhibition" is scheduled Sept. 11-Oct. 13 at Ford Gallery. In April 2006, the Eastern Michigan University Art Department became the recipient of 635 pieces of contemporary artwork. This unique gift was made through the generosity of a Michigan businessman. The collection includes lithographs, silkscreen prints and etchings from internationally renowned artists such as Itzchak Tarkay, Jamie Wyeth, Barbara Wood and Carol Jablonsky. This exhibition of 30 works was selected from the collection to represent the type and quality of artwork that is available to the University community as a result of this gift. A reception is scheduled Monday, Sept. 11, 4-6 p.m., at Ford Gallery.



"Quiet Reflection," a painting by Itzchak Tarkay, will be one of approximately 30 pieces on display at "The Gifts of Art Exhibition" at Ford Gallery Sept. 11-Oct. 13.

"HyperFlux: Work from CalArts 1999-2004" consists of 35 mixed media/silkscreen posters designed by students in the California Institute of Arts graphic design program. The exhibition, scheduled Oct. 17-Nov. 22, includes award winning and internationally exhibited posters that give a snapshot of contemporary West Coast design. Alumni from this cohort of CalArts graduates now work in design firms in New York, Los Angeles, New Orleans, Austin, Frankfurt

and Bremen, Germany; and Bangkok, Thailand. Jennifer McKnight, assistant professor at the University of Missouri, St. Louis, curated the exhibition. A reception is scheduled Tuesday, Oct. 17, 4-6 p.m., at Ford Gallery.



COMIC ART RETURNS: "Leapin' Lizards: Comic Art Returns to EMU," is the inaugural exhibiton of EMU's new University Art Gallery, located in the new student center. The exhibition, which includes editorial cartoons, comic strips, comic books, manga (Japanese comics) and graphic novels, is scheduled Nov. 6-Jan. 12.

manga (Japanese comics) and graphic novels. The exhibition runs Nov. 6-Jan. 12, with a reception Monday, Nov. 6, 4-6 p.m. In addition to the exhibition, a symposium is scheduled Thursday, Nov. 9, 7-9 p.m., in the EMU Student Center Auditorium. The symposium will feature a panel of comics professionals, who will discuss their careers in this field and comment on the "Leapin' Lizards" exhibition.

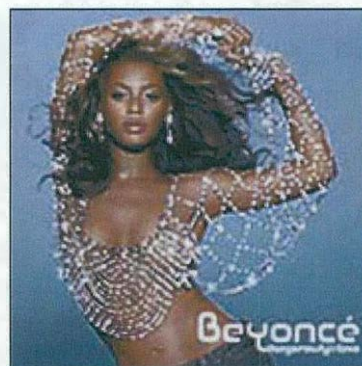
In addition to the exhibitions, three lectures by prominent artists and art historians are scheduled this semester:

Jason Wright, artist, teacher and curator, will present **"Making Art in the Margins: 'Outsider' and 'Self-Taught Artists,'"** Tuesday, Sept. 19, 5 p.m., Halle Library Auditorium. Wright developed Swipple.com, an alternative online exhibit space that features artwork from a wide variety of artists and has sponsored exhibits in New York, Ypsilanti and San Francisco.

Michael Worthington, graphic designer and co-director of the graphic design program at CalArts, will speak Tuesday, Oct. 17, 5 p.m., Ford Gallery. Worthington, a graduate of the CalArts program, has had writing and award-winning visual work published in numerous international and national publications.

Lyneise Williams, art historian, presents **"What About Bling? Considering Hip-Hop Jewelry,"** Tuesday, Oct. 24, 7 p.m., Halle Library Auditorium. Williams is a professor at the University of North Carolina, Chapel Hill, and specializes in

"Leapin' Lizards: Comic Art Returns to EMU" is the inaugural exhibition of EMU's new University Art Gallery. The third in a series of shows at EMU of original comic art, "Leapin' Lizards" celebrates the artistry, vitality and imagination of those who devote their careers to writing and drawing cartoons and comics. Encompassing a vast array of subjects, themes and styles, the exhibition is international in scope and comprised of both historical and contemporary examples. Instead of just experiencing these works in reproduction, visitors to the show will be able to see the actual art of panel and editorial cartoons, comic strips, comic books,



BLING BANTER: Art historian Lyneise Williams

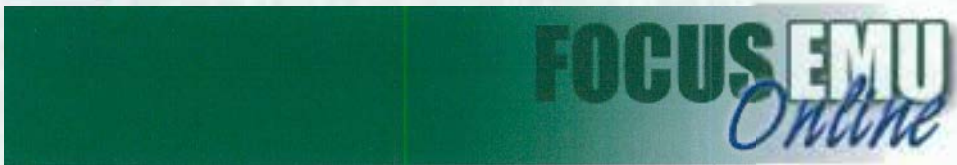
African art, African-American art, Latin American art, art of the African Diaspora and museum studies.

Four graduate thesis exhibitions are scheduled Nov. 27-Dec. 15 in Ford Gallery.

presents a lecture, "What About Bling? Considering Hip-Hop Jewelry," Tuesday, Oct. 24, 7 p.m., in the Halle Library Auditorium.

All exhibits and lectures are free. The Ford Gallery and University Art Gallery hours are Monday and Thursday, 10 a.m.-5 p.m.; Tuesday and Wednesday, 10 a.m.-7 p.m.; and Friday and Saturday, 10 a.m.-2 p.m. For more information about exhibits or lectures, call 487-0465.

Feature



Aug. 29, 2006 issue
Music schedule offers a sound for every crowd

By Leigh Soltis

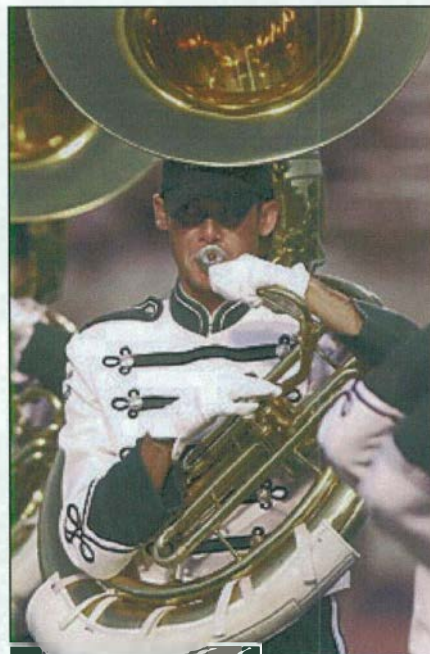


From jazz to marching band to string quartets, a variety of musical styles will be showcased this fall by Eastern Michigan University's Department of Music and Dance. Annual favorites such as the Halloween concert, improvisation symposium and children's dance concert return as part of the 34 scheduled concerts.

Some highlights from this year's lineup include:

More than 30 high school marching bands from across the Midwest entertain and compete for the opportunity to perform in the evening's regional championship competition finals at "Bands of America" Saturday, Oct. 7, all day at Rynearson Stadium. EMU's Marching Band takes the field for a guest performance. General admission for preliminaries or finals competitions is \$14 individually, or \$21 for both competitions. For schedule information and advance tickets, visit www.bands.org. Tickets also are available at the gate.

Kevin Miller directs the EMU Symphony Orchestra in a gala concert celebrating 75 years of orchestra at EMU Sunday, Oct. 8, 3 p.m., in Pease Auditorium. Highlights include a world premiere of "Fiddleback Overture," by Whitney Prince; guest conducting appearances by former EMUSO conductor Russell Reed and alumna Kimcherie Lloyd ('85 and '87), director of orchestras and opera at the University of Louisville; and solo



FORWARD, MARCH: The EMU Marching Band will make a guest appearance at the "Bands of America" regional championship Oct. 7 at Rynearson Stadium.

performances by harp professor Ruth Myers ('77) and two-time concerto winner and flutist Carrie Wiesinger (2000). The concert concludes with a performance by the EMU Alumni Orchestra. Admission is free, but donations will be accepted for music scholarships.



GOING BATTY: Kevin Miller, dressed as Dracula, directs the EMU Symphony at last fall's Halloween concert. The audience favorite returns this year Oct 28, 7:30 p.m., in Pease Auditorium.

Kevin Miller and the EMU Symphony Orchestra present an entertaining evening of surprises and spooky music at their annual Halloween Concert Saturday, Oct. 28, 7:30 p.m., Pease Auditorium. The audience is invited to come in costume. Admission is \$10 for adults, \$8 for seniors and students, and \$6

for children under 12.

Described as "a genius of the piano" and hailed by critics around the world for her recordings, concerts and pedagogical skills, Rebecca Penneys performs music for solo piano Sunday, Nov. 5, 4 p.m., Pease Auditorium. Penneys is professor of piano at Eastman School of Music.

Beloved Lutheran church musician, clinician, composer and performer David Cherwien is the featured guest artist for EMU's 10th Annual Improvisation Symposium Friday, Nov. 10; and Saturday, Nov. 11. The symposium includes a hymn festival Nov. 10, in which Cherwien leads area choirs and organists, 7 p.m., at Christ Our Savior Lutheran Church in Livonia. Cherwien also offers practical improvisation ideas for creative and enticing leadership of congregational song in a workshop Nov. 11, 9:30 a.m.-12:30 p.m., at the Organ Recital Hall at EMU.

This year's Faculty Showcase is scheduled Sunday, Nov. 12, 4 p.m., in Pease Auditorium. It features performances by Nelson Amos, guitar; and

the Alexander Trio, comprised of Daniel Foster, violin; Diane L. Winder, cello; and professor emeritus Joseph Gurt, piano. Additional entries will be posted on the Web site.

Willard Zirk and friends present music written for the horn in the 20th century in "History of the Horn, Part V" Tuesday, Nov. 7, 7:30 p.m., Pease Auditorium. The recital features Benjamin Britten's "Serenade for Horn and Strings," Gordon Jacob's "Concerto for Horn and Strings," and will conclude with the world premiere of Whitney Prince's "Wind Music," for horn, piano, bassoon and percussion. Performers include Garik Pendersen, piano; Paul Herrema, tenor; John Dorsey, percussion; and David Pierce, bassoon.



HEAR THE HORNS: Willard Zirk and friends present "History of the Horn" Nov. 7, 7:30 p.m., Pease Auditorium.

The dance program and EMU Symphony Orchestra, under the direction of Sherry Jerome and Kevin Miller, present Tchaikovsky's "Sleeping Beauty — The Rest of the Story." Two identical, one-hour free programs, especially for youth in grades one through eight, are scheduled Friday, Dec. 1, at 10 a.m. and 12:15 p.m., in Pease Auditorium. Reservations are required for these shows. An evening performance also is scheduled for the public at 8 p.m. Admission is \$10 for adults, \$8 for students and seniors, and \$6 for children under 12.

John Dorsey and the EMU Percussion Ensemble collaborate with the EMU Jazz Ensemble, directed by Donald Babcock, in this annual rhythmic extravaganza Monday, Dec. 4, 8 p.m., in Pease Auditorium.

All concerts are free unless otherwise noted. A full schedule of events is available at the department of music and dance Web site, www.emich.edu/musicdance. Information also can be received via the events hotline, 487-2255.

Fall sports preview

Aug. 29, 2006 issue

**Fall sports
preview/summer
athletics roundup**

By Ron Podell

The fall sports season at Eastern Michigan University could be a strong one, if football can rise to the occasion and meet the recent success of the men's cross country and women's volleyball teams. The latter two are picked to be at or near the top in the Mid-American Conference. The football team will have to win early to make believers out of the naysayers who picked the Eagles to finish last in the MAC West this fall.

Despite that preseason prediction from the MAC Media Association, the football team has garnered some preseason national exposure.



The Sporting News has selected three EMU football seniors to be preseason All-Mid-American Conference players for the 2006 season. Wide receiver **Eric Deslauriers**, defensive lineman **Kevin Howe** and placekicker **Andrew Wellock** were picked for the MAC preseason team. In addition, The Sporting News chose Wellock to the All-American checklist and the senior placekicker also is on the Lou Groza Award Watch List, which includes 30 placekickers nationwide. The Groza Award goes to the best kicker in the nation. Wellock was a finalist in 2004 and made the watch list in 2003 and 2005.



CLUTCH KICKER: Senior placekicker Andrew Wellock is one of three Eagles picked to the All-MAC preseason team.

During his career, he has kicked a school-record 53 field goals and has tied the record for the longest field goal in EMU history with two 52-yarders.

Last year, Deslauriers caught 75 passes for 874 yards and eight touchdowns. He ranked in a tie for 15th in the NCAA with 6.82 catches per game and 39th in receiving yards with 79.45 per game.

Howe, an All-MAC second team selection last year, had 55 tackles, including 10.5 sacks for 69 yards in losses, which tied for sixth in Division I. His 16.5 tackles for a loss of 85 yards tied for 20th in the NCAA.

defensive backfield will be anchored by senior co-captain **Lauren Clyne**, juniors **Lindsey Hill** and **Jill Kehler**, and redshirt freshman **Renee Farrell**.

Student-athletes excel in classroom

Eastern Michigan University athletes recorded the highest cumulative GPA in history at 3.094 for the 2006 winter semester. The previous best was 3.050 during the 2005 winter semester.

"The academic report for the 2006 winter semester reflects the hard work and dedication that is put into the academic experience by our faculty, staff and student-athletes," said EMU Athletics Director Derrick Gragg. "Our success in athletic competition is in direct correlation to our success in the classroom. Our student-athletes, as well as student-athlete support services, devote a lot of time and effort to improving academic performance and they should all be congratulated on the success of the entire University."



Gragg

For the second semester in a row, the women's tennis team (3.792) and the baseball team (3.146) earned the highest team GPA's for the men's and women's programs. During the winter semester, 78.9 percent of the athletic teams posted a 3.0 or higher in both cumulative and semester GPA.

"We obviously have a lot of confidence in our staff and student-athletes working closely to guarantee academic success," said Erin Burdis, assistant director for student athlete support services. "We are very happy with the results from this past semester and we expect that success to continue into the future."

During August, the MAC announced its Institutional Academic Achievement Award. Eastern Michigan's athletes finished second, by the slimmest of margins, with an overall GPA of 3.073. Central Michigan University won the Institutional Academic Achievement Award with an overall GPA of 3.075.

The Eagles host 411 student-athletes in 19 sports while CMU hosts 368 student-athletes in 16 sports.

In August, the women's volleyball team was one of just 54 NCAA Division I programs to receive the American Volleyball Coaches Association (AVCA) Team Academic Award for the 2005-2006 school year. The Eagles posted a 3.342 GPA. The AVCA Team Award is given to college and high school teams that maintained at least a 3.3 cumulative GPA on a 4.0 scale.

"All decisions regarding the volleyball program center on the interests of the student-athletes and academics are a core belief of our volleyball program," said Head Coach Kim Berrington. "We believe the success of our program is based on the development of personal responsibility and the cooperation among teammates, staff and the University."

Track and Field

The men's and women's outdoor track and field teams continued their strong tradition, each finishing second at the MAC meet at the University of Toledo May 11-13. The men's team scored 159.5 points to finish runner-up to Central Michigan, which scored 175.5 points.

In August, the women's volleyball team was one of just 54 NCAA Division I programs to receive the American Volleyball Coaches Association (AVCA) Team Academic Award for the 2005-2006 school year. The Eagles posted a 3.342 GPA. The AVCA Team Award is given to college and high school teams that maintained at least a 3.3 cumulative GPA on a 4.0 scale.

"All decisions regarding the volleyball program center on the interests of the student-athletes and academics are a core belief of our volleyball program," said Head Coach Kim Berrington. "We believe the success of our program is based on the development of personal responsibility and the cooperation among teammates, staff and the University."

Track and Field

The men's and women's outdoor track and field teams continued their strong tradition, each finishing second at the MAC meet at the University of Toledo May 11-13. The men's team scored 159.5 points to finish runner-up to Central Michigan, which scored 175.5 points.



Dave Adamek and Corey Nowitzke were named to the All-MAC First Team. Adamek captured the shot put title, throwing 58 feet, 8 1/2 inches, while Nowitzke took the 1,500-meter crown in a time of 3:53.68. The 4 x 400-meter relay team of **Fred Blackwell, Adrian Simmons, Eric Alejandro and Roy Shavers** ran a 3:14.12 clocking for the win.

Jake DuBois and Shavers made the All-MAC Second Team. DuBois finished second to Nowitzke in the 1,500 with a time of 3:53.81 and Shavers took the runner-up spot in the 400 meters in 48.02.

The women, led by the meet's Most Valuable Performer, **Patrice Beasley**, scored 103 points to finish second to MAC champion Akron, which scored 141. Beasley, a senior, scorched to wins in the 100 meters (:11.68), 200 meters (:23.92) and helped the 4 x 100-meter and 4 x 400-meter relay teams to victories. The 4 x 100-meter relay team, which included **Ashley McCullough, Bria Woods** and

ONE LAPPER: Roy Shavers helped the Eagles' 4 x 400-meter relay team win the event at the MAC meet. Shavers also finished second in the 400 meters at the conference meet.

Lintera Harvin, won in :45.45. The 4 x 400-meter relay team of Beasley, **Chrystal Dooley, LaQuae Jones** and Woods galloped to a winning time of 3:40.85. Both relay squads set track records.

In addition to Beasley, Dooley also made the All-MAC First Team by virtue of her win in the 400-meter hurdles. Her time of :58.51 was a track record. McCullough made the second team with her second-place finish in

the long jump (20 feet, 10 1/2 inches).

The men's team had nine NCAA regional qualifiers. They were Nowitze (3,000-meter steeplechase and 1,500 meters), **Adam Kring** (high jump), Adamek (shot put), **Eric Alejandro** (400-meter hurdles) and **Edouard Joliveau** (long jump). Adamek also qualified in the hammer throw, but did not compete at regionals in this event. **Bob Colville** (100 meters) and the 4 x 400-meter relay team of Blackwell, Simmons, Alejandro and Shavers also qualified, but did not compete due to injuries.

The women produced seven regional qualifiers. Beasley led the charge, qualifying in four events (100 meters, 200 meters, 4 x 100-meter relay and 4 x 400-meter relay). Woods qualified in three events (400 meters and the two relays), as did Dooley (100-meter hurdles, 400-meter hurdles and the 4 x 400-meter relay) and McCullough (long jump, triple jump and the 4 x 100-meter relay). Harvin (4 x 100-meter relay) and Jones (4 x 400-meter relay).



SUPER WOMAN: Senior Patrice Beasley was named the Most Valuable Performer at the MAC meet. She won the 100- and 200-meter races, and helped the 4 x 100 and 4x 400-meter relay teams win.

From those, three men and three women made nationals. At regionals, Adamek finished third in the shot put with a personal best 60 feet, 1 inch. Kring tied for third in the high jump with a leap of 6 feet, 11 inches and Nowitze was fourth (8:49.39) in the steeplechase. Dooley placed fourth in the 400-meter hurdles (:56.75) and McCullough placed fourth in the long jump (20 feet, 10 inches). Beasley advanced to nationals in the 100 meters by virtue of time earlier in the season.

The top five individuals in each event, along with the top three relay teams, qualify for nationals.

At the NCAA Outdoor Championships in Sacramento, Calif., June 7-10, Nowitzke finished 11th in the 3,000-meter steeplechase (8:45.90). He was the seventh American in the race and earned All-American honors. Adamek (15th in shot put) and Kring (28th in high jump) were eliminated in the preliminaries of their events and did not make the finals.

Nowitze and redshirt freshman **David Brent** both participated in the 3,000-meter steeplechase at the U.S.A. Outdoor Track and Field

knocked in 14 runs and scored 12 times.

Strauss was one of only two Eagles to start every game this season. She had 14 multi-hit games, including six contests in which she had at least three hits.

Utility player **Heather Han** was the first Eagle ever named to the All-MAC Freshman Team. Han started multiple games at catcher, third base and right field. For the season, she totaled 21 hits, 14 RBIs, scored 11 runs and drew 13 walks.

Denman, a parks and recreation major (3.73), and sophomore **Heather Giroux**, a criminology major (3.98), were named to the All-MAC Academic Team. Denman is a three-time honoree and is just the 15th student-athlete to receive the honor three times in MAC history.

Baseball

Like the women's softball team, the men's baseball team also had a .500 season, finishing 27-27 and making the MAC Tournament for the first time since 2004. The team was ousted from the double-elimination tournament with a 2-1 loss to Kent State and an 11-2 thumping from Miami (Ohio).

Sophomore pitcher **Jeff Fischer** garnered a few postseason honors. Fischer was named the MAC Pitcher of the Year by virtue of his 9-3 record, which included four complete games, on the mound. He limited opposing hitters to a .223 average, led the league with a 1.95 ERA and was fifth in strikeouts with 98.



DOUBLE PLAY: Second baseman Josh Ivan completes a double play. Ivan was one of three EMU baseball players named to the Academic All-MAC Team.

He was named to the 2006 ABCA and Rawlings NCAA All-Mideast Region First Team, which consists of 13 members. Fischer is the first EMU player to garner the award since Brian Bixler in 2004.

Fischer also was named to the 2006 ESPN The Magazine/CoSIDA (College of Sports Information Directors of America) Academic All-District IV baseball second team. Fischer has a 3.42 GPA in biology.

In addition, Fischer was one of three EMU players named to the Academic All-MAC team, which included 15 players. Shortstop **Jeff Hehr** (an accounting major with a 3.94 GPA) and second baseman **Josh Ivan** (an elementary education major with a 3.62 GPA), both sophomores, also made the team.

Men's Golf

Eastern Michigan University senior **Korey Mahoney** was named to the seven-person Academic All-Mid-American Conference men's golf team. This is the second consecutive season that Mahoney has garnered the honor. He had a 3.29 GPA in economics.



GOLF HONORS: Senior Korey Mahoney was the 2006 MAC Golfer of the Year, a member of the All-MAC First Team and named to the Academic All-MAC Team. He also won a couple of individual postseason honors.

For the second consecutive year, Mahoney was invited to the NCAA Regional Championships, which were played at Sand Ridge Golf Club in Cleveland, Ohio. He received one of the 18 at-large invitations handed out at three NCAA Regional Championships.

Mahoney also was the 2006 MAC Golfer of the Year and a member of the All-MAC First Team. Mahoney had seven, top 10 finishes in the 11 tournaments he competed. He averaged 72.07 strokes per round, the lowest average in the conference.

Postseason honors continued in June for Mahoney, who was named to the PING All-Region Midwest Team released by the Golf Coaches Association of America. Each of the nine PING All-Region teams is comprised of 15 golfers and any player ranked in the top 775 nationally in either Golfstat or the Golfweek/Sagarin rankings. Members of the PING All-Region teams are eligible for PING All-America honors.

In July, the Golf Coaches Association of America (CGAA) All-America Scholars Committee named Mahoney a 2006 Cleveland Golf All-America Scholar. Only juniors and seniors are eligible and must have at least a 3.20 GPA. In addition, golfers must have a stroke average fewer than 76 for nine holes.

Freshman **Chris Ross** was named the MAC Freshman of the Year. Ross played in all 11 of EMU's tournaments. In 36 rounds, he averaged 74.56 strokes per round, the third lowest scoring average on the team.

Sophomore **Graham Hill** was named to the All-MAC Second Team. In July, Hill qualified to play in the 2006 U.S. Amateur Championship Aug. 21-27 at Hazeltine National Golf Club in Chaska, Minn. The U.S. Amateur

GPA. In addition, golfers must have a stroke average fewer than 76 for nine holes.

Freshman **Chris Ross** was named the MAC Freshman of the Year. Ross played in all 11 of EMU's tournaments. In 36 rounds, he averaged 74.56 strokes per round, the third lowest scoring average on the team.

Sophomore **Graham Hill** was named to the All-MAC Second Team. In July, Hill qualified to play in the 2006 U.S. Amateur Championship Aug. 21-27 at Hazeltine National Golf Club in Chaska, Minn. The U.S. Amateur Championship is the most prestigious and oldest U.S. Golf Association amateur championship. More than 4,000 golfers attempted to qualify for the 312 tournament spots.

Women's Golf

The women's golf team finished sixth at the MAC Conference Championships. Four Eagles finished in the top 25 at the event. Freshman **Stephany Fleet** tied for 11th with a 306 while sophomore **Catherine Fortin** finished 15th with a score of 310. Junior **Katie Strawser** placed 17th (311); junior **Kelly Boogaard** finished tied for 24th (316); and sophomore **Paola Sanchez** finished in a tie for 31st (322).



EAGLE EYE: Sophomore Catherine Fortin was named First Team All-MAC.

Fortin earned First Team All-MAC honors. She became just the seventh Eagle to earn All-MAC accolades and the first since 2003.

Women's Tennis



Parfenyuk

The women's tennis team finished the regular season 9-10, with a 4-4 mark in the MAC. The fifth-seeded Eagles handled the University of Toledo, winning 4-1 in the first round of the MAC Tournament. The Eagles fell to top-seeded Western Michigan, 4-0, in the semifinals of the MAC Tournament.

Yana Parfenyuk was named to the Academic All-MAC Team as voted on by league faculty athletic representatives. Parfenyuk, a finance major, has a GPA of 3.85. Parfenyuk finished the regular season with a perfect 8-0 mark in the MAC and a 15-6 overall dual mark at the No. 4 singles positions. She also notched a 4-4 MAC record,

Parfenyuk

Yana Parfenyuk was named to the Academic All-MAC Team as voted on by league faculty athletic representatives. Parfenyuk, a finance major, has a GPA of 3.85. Parfenyuk finished the regular season with a perfect 8-0 mark in the MAC and a 15-6 overall dual mark at the No. 4 singles positions. She also notched a 4-4 MAC record, with an 8-12 overall mark at the No. 1 doubles position, where she was paired with Vanessa Frankowski.

Wrestling

The EMU wrestling team received a coaching overhaul in the past few months.

Derek DelPorto, head wrestling coach at Slippery Rock State University the past two seasons, was named EMU's head wrestling coach March 23. DelPorto took over for **John Lange**, who served as interim head coach during 2005-06.



DelPorto

In its final season before Slippery Rock dropped its wrestling program, DelPorto led his alma mater to a 14-9 dual-meet record and the team championship at the NCAA Division I East Regional Tournament and advanced a tournament-record 10 wrestlers to weight-class championship final bouts. Four of those wrestlers won individual titles, tying a school record for regional competition.

In addition, Slippery Rock sent a school-record five wrestlers to the 2006 NCAA Division I National Championships. For his efforts, DelPorto was named NCAA Division I East Regional Coach of the Year.

His 2004-05 Slippery Rock squad was the NCAA East Regional runner-up, and had three NCAA Division I championship qualifiers and three Academic All-Americans.

He began his coaching career as an assistant coach at Slippery Rock in 1999-2000, before moving to Oklahoma University, where he was an assistant coach from 2000-2002. From 2002-2004, he was an assistant wrestling coach at Cornell University before returning to his alma mater.

During his collegiate career, DelPorto had a 116-38 record, third-best in school history. He earned NCAA All-American honors in 1999 after finishing eighth in the heavyweight division at the NCAA Division I Championships. He was a three-time East Regional champion, winning heavyweight titles in 1998 and 1999, and capturing the 177-pound crown in 1996. He also won the Pennsylvania State Athletic Conference heavyweight title in 1998.



DelPorto was named the head coach of the 2006 National Wrestling Coaches Association All-American Summer Tour team that toured the Ukraine. The tour took place June 1-10, with stops in Odessa and Kiev as part of a goodwill wrestling tour of the Ukraine.

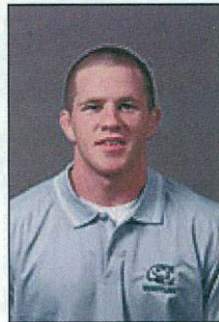
a 14-9 dual-meet record and the team **DelPorto** championship at the NCAA Division I East Regional Tournament and advanced a tournament-record 10 wrestlers to weight-class championship final bouts. Four of those wrestlers won individual titles, tying a school record for regional competition.

In addition, Slippery Rock sent a school-record five wrestlers to the 2006 NCAA Division I National Championships. For his efforts, DelPorto was named NCAA Division I East Regional Coach of the Year.

His 2004-05 Slippery Rock squad was the NCAA East Regional runner-up, and had three NCAA Division I championship qualifiers and three Academic All-Americans.

He began his coaching career as an assistant coach at Slippery Rock in 1999-2000, before moving to Oklahoma University, where he was an assistant coach from 2000-2002. From 2002-2004, he was an assistant wrestling coach at Cornell University before returning to his alma mater.

During his collegiate career, DelPorte had a 116-38 record, third-best in school history. He earned NCAA All-American honors in 1999 after finishing eighth in the heavyweight division at the NCAA Division I Championships. He was a three-time East Regional champion, winning heavyweight titles in 1998 and 1999, and capturing the 177-pound crown in 1996. He also won the Pennsylvania State Athletic Conference heavyweight title in 1998.



Cieski

DelPorto was named the head coach of the 2006 National Wrestling Coaches Association All-American Summer Tour team that toured the Ukraine. The tour took place June 1-10, with stops in Odessa and Kiev as part of a goodwill wrestling tour of the Ukraine.

Brad Cieski, an assistant wrestling coach at Brown University in 2005-06, was named an assistant wrestling coach. Cieski was a four-time NCAA national wrestling championship qualifier while competing at Slippery Rock University for his first three years and at the University of Missouri as a graduate student during his fourth season. He recorded more than 100 wins during his intercollegiate wrestling career and was named to the National Wrestling Coaches Association (NWCA) All-Academic team in 2004-05. Cieski received his bachelor's degree in sociology/criminology from Slipper Rock University.

Swimming

In May, two members of EMU's swimming and diving team were named to the ESPN The Magazine Academic All-District IV University Division Women's Team. **Sarah Chrzanowski** was named to the first team while sophomore **Madeleine Pilchard** was a second-team selection. During June, Chrzanowski was named to the ESPN The Magazine Academic All-America 2006 University Division Women's At-Large Second Team. Chrzanowski carries a perfect 4.0 GPA.

In July, Pilchard and senior **Katie Benedict** added more academic honors when they were named to the 2006 College Swimming Coaches Association of America (CSCAA) Academic All-American Honorable Mention Team. Pilchard has a 3.94 GPA as an elementary education major while Benedict carries a 3.90



GPA as a language and literature major.

MAKING WAVES: Sophomore swimmer Madeleine Pilchard excelled both in the pool and the classroom.

To earn Academic All-American status, student-athletes must earn a minimum 3.5 GPA and qualify for the NCAA, NAIA or NJCAA championships. Student-athletes with a 3.5 GPA who earn NCAA 'B' times are eligible for Academic All-American Honorable Mention status.

Men's basketball

Although the regular season in basketball is still months away, at least one EMU player earned some valuable experience this summer. Redshirt freshman **Kyle Dodd** was selected as one of 12 players on the Under-20 Men's National Team that represented Great Britain at the Federation Internationale de Basketball Amateur (FIBA) European Games, which took place July 21-29 in Lisbon, Portugal. Dodd averaged 5.7 points and 6.0 rebounds in five games.

Personnel Moves



Parks

During the summer months, it is standard for vacant coaching and athletic support positions to be filled at EMU. Perhaps the biggest coaching name coming to EMU is **Sue Parks**.

Parks, a former EMU track great and member of EMU's Athletic Hall of Fame, was named the head women's cross country and track and field coach July 27.

"We are very excited to have someone with the outstanding track background of Sue Parks join our staff," said EMU Athletic Director Derrick Gragg. "Sue has been a champion both as a collegiate runner and as a coach on the track and field, and cross country national level. She has developed top programs at every stage of her coaching career and we are confident that her coaching success will continue here at Eastern Michigan University.

Parks enjoyed tremendous success during her 12 years at Ball State University, winning eight Mid-American Conference titles and finishing as the runner-up 10 times in track and cross country. Parks was named MAC Women's Coach of the Year five times: in indoor track three times, 1996, 1998 and 2001; in outdoor track in 2000; and in cross country in 2003.

She was selected as an NCAA Regional Coach of the Year in indoor and outdoor track in 1998. Her 2002 cross country team became just the third MAC team to ever qualify for the NCAA Championship.

Parks' career includes stops as women's head cross country coach and assistant coach for women's track and field at the University of Michigan from 1984-87; head women's cross country coach and assistant women's track coach at Michigan State University; and an assistant cross country and track coach for both the women's and men's programs at the University of Arizona from 1990-94.

She is currently president of the Women's Cross Country Coaches Association. She is responsible for directing the regional representatives and presiding over the national meeting at the NCAA Championship.

Parks received both her master's and bachelor's degrees from EMU. While an undergraduate, Parks was a MAC cross country invitational champion from 1976-78. In 1978, she also was an Olympic Trials qualifier. Her

father, Bob Parks, was head coach of the men's cross country and track and field teams from 1967-2000.

Brad Holdren, assistant coach of the women's rowing team the past two seasons, was named interim head coach Aug. 10. Holdren replaces Pam Besteman, who resigned this summer.

Holdren previously was the head coach of the men's and women's rowing teams at Mary Washington College in Fredericksburg, Va., from its inception in 1998 to 2003-04. Holdren also has had coaching stints at Clemson University (1997-98), Armstrong Atlantic State University (1996-97), Savannah Country Day School (1995-96) and Grand Valley State University (1992-94).

As a rower, Holdren was the national champion in men's senior lightweight double sculls. In 1994, he finished third in the same event. Holdren received his bachelor's degree in physical education, with a coaching emphasis, from Grand Valley State University.



Young

Del Young was named assistant baseball coach July 20. Young, a second assistant coach the last two years, replaces former assistant coach Chris Hoiles, who resigned after the 2006 season. Young received his master's degree in sports management from Eastern Michigan University and his bachelor's degree in business administration from Northwood University.

Lisa Savoury, an assistant EMU women's basketball coach the past five seasons, was named the director of basketball operations July 12. She received her bachelor's degree from Brigham Young University.

Chip Wilde, former head men's basketball coach at Concordia University in Ann Arbor and an administrative assistant at Eastern Michigan University, was named a full-time assistant men's basketball coach at EMU July 5. He replaced Dusty May, who left to become an assistant basketball coach at Murray State University.



Wilde

Wilde coached at Concordia from 1997-2003. His tenure was highlighted by being named 2001 NCCAA Regional Coach of the Year after leading Concordia to the NCCAA National Tournament. He most recently was coordinator of men's basketball operations at Rutgers University.

Wilde received his master's and bachelor's degrees in physical education, both from Western Illinois University.



Schultz

Scott Schultz was named coordinator of marketing and promotions for the athletic department. Schultz spent 2004-2005 as a marketing intern in EMU's athletic department and was responsible for group ticket sales.

Schultz received his bachelor's degree in management from Michigan State University.

Kelli Stein, an All-American swimmer at the University of Michigan in 2004, was named an assistant coach for the men's and women's swimming and diving team.

Stein received her bachelor's degree in sports management and communication from the University of Michigan.

After graduating, Stein worked as an assistant swimming coach with the Scioto (Ohio) Country Club during summer 2005. She also had been the office manager at Clintonville (Ohio) Servicenter since June 2005. She also served as an assistant swimming coach at Dublin Scioto High School in 2004-05, and as the master's swim coach at Sawmill Athletic Club in 2005.

Feature

FOCUS EMU
Online

Aug. 29, 2006 issue
**Student Government
 leaders working for
 fellow students**

By Leigh Soltis

Back to Current Issue
FOCUS EMU
 Online

Like the Fox 2 News "Problem Solvers," Eastern Michigan University Student Body President Daniel Cicchini and Vice President Emily Vincent have a message for the students: we're working for you.

"We are here and always open to chat about any issue or any concern," said Cicchini. "If we can't find a resolution, we will find someone who can."

Much of student government's time is often occupied with supporting campus construction/reconstruction projects and helping faculty and staff by sitting on search committees. But the new leaders make time to listen to the concerns of the students they represent.



ON YOUR SIDE: Student Body President Daniel Cicchini and Student Body Vice President Emily Vincent pose in front of the new student center. The two student leaders want to hear what issues on campus are important to their fellow students.

Whether it's an individual problem, such as difficulty with a professor, or a concern shared by many students (parking for example), the leaders can't effectively lobby for the students without hearing student input.

"That is a challenge that we try to address every single year," said Cicchini, who served as student body vice president last year. "I've found that one of the best ways is to just approach people walking around campus and ask 'What's on your mind?' It never ceases to amaze me how clear and articulate the concerns are of even the most seemingly non-involved student."

One topic on students' minds is the condition of the Pray-Harrold building. Student leaders have been working with EMU President John Fallon and the University's Political Action Committee (PAC) to acquire the funds necessary to renovate the 37-year-old facility and provide it with adequate, up-to-date learning equipment.

To make it easier for students to address their concerns about the classroom building to the state legislature, student government created a Web site, www.prayharrold.com. The site includes information about Pray-Harrold and why it needs to be remodeled. To help students voice their opinions, the site provides forms, letters, contact information for representatives in Lansing and tips for writing a successful letter to a legislator.

"Eastern has a good reputation with legislators," said Cicchini. "The students are respected and our opinions are taken into consideration."

Cicchini and Vincent continue to work hard on the Pray-Harrold renovation project. However, as seniors, they know they might be long gone by the time of its completion. Projects such as this, as well as the new student center, which was a focal student government issue in previous years, often take longer to complete than a student leader's term in office.

"It's amazing how quickly the year passes, and how slow things move," said Cicchini. "It takes a long time for policies to develop —projects often span several student governments."

"It takes time and persistence to keep up with things," Vincent added. "We start certain projects and trust that they will continue with the next student leaders that come into office."

This year will be one of transition for student government. The group will be housed in offices in the new student center and will operate under the auspices of a new constitution.

Cicchini, Vincent and other student representatives researched how student governments at other schools are organized, and came up with a new model that they think will better serve Eastern's students. The new government consists of the senate, a group of 30 students; and the executive branch, made up of numerous student directors. The result is a more centralized organization.

"[Student government] used to be mirrored after the federal government, but we found it to be ineffective at hearing and addressing student's concerns," said Cicchini.

Recently, Cicchini was invited to a budget meeting with the deans from EMU's five colleges. Since students provide a good deal of the University's funding through tuition and various fees, Cicchini represents his fellow students' ideas about how their money should be best spent.

"It shows progress that a student was invited to participate in this process. It lets us provide student input at a significant level," said Cicchini.

Cicchini and Vincent present ideas that they have heard from students to various University committees. Polling on my.emich is one of the newest ways they have discovered to obtain student input. The effectiveness of Eastern's advising system is a topic where students were recently polled.

"We received hundreds of e-mails about personal experiences with advising," said Vincent. "Comments are very helpful. We want students to know that they (comments) are read and are taken into account when making decisions."

Both political science majors, Cicchini and Vincent hope to attend law school after graduation and continue to represent the people of their communities.

Feature

FOCUS EMU
Online

Aug. 29, 2006 issue
**Be in the know
about EMU**

By Ron Podell



With another school year at Eastern Michigan University starting soon, it's a good idea to know what's going on — the who, what, where and when of campus life. A number of informational avenues are available to you through University Communications.

University Communications offers a wide variety of services, including publication of the faculty/staff newspaper, media relations, public relations, crisis management, photography services, media training seminars, and a daily events calendar distributed campus-wide by e-mail.

Important EMU information also can be found electronically. FOCUS EMU, the weekly faculty-staff newspaper, is published electronically weekly September through April, and monthly from May through August. It can be found at www.emich.edu/focus_emu/



EMU Today, the daily electronic list of news items, campus events, athletic activities, meetings and lectures, and seminars is available at 5 a.m. each weekday.

In addition, University Communications has a link on www.emich.edu, the University's official Web site. The University Communications site, at www.emich.edu/univcomm/, includes news releases, a campus calendar of events, information on the Board of Regents, up-to-date, weather-related school closing information, and online versions of EMU Today and FOCUS EMU.

The EMU Newline can be reached at 487-2460. The newline is a taped service featuring late-breaking news, including weather-related school cancellations.

University Communications periodically conducts media seminars for faculty and staff. The seminars are designed to orient faculty and staff with how to effectively work with the media and to learn how to publicize their stories and events. All faculty and staff are invited to attend. Monitor EMU Today for upcoming media seminar dates.

University Communications can be reached by calling 487-4400. Contacts include: Pamela Young, director; Ward Mullens, associate director; Ron Podell, assistant manager of news services; and the University photographer. The office is located at 18 Welch Hall and is open 8 a.m.-5 p.m. weekdays.

Feature

FOCUS EMU

Online

Aug. 29, 2006 issue
**When's the next
FOCUS EMU?**

By Ron Podell

Back to Current Issue
FOCUS EMU
Online

FOCUS EMU's Web site allows University Communications to provide up-to-date information on campus happenings. Every issue is only a click away at www.emich.edu/focus_emu.

With this issue, FOCUS EMU returns to its regular weekly publication schedule. The publication schedule for fall 2006 is as follows:

Sept. 5, 12, 19, 26;

Oct. 3, 10, 17, 24, 31;

Nov. 7, 14, 28;

Dec. 5, 12

Featured Photo

FOCUS EMU
Online

August 29, 2006 issue



GOOOOAAAL! Eastern Michigan University freshman Maggie Christenson scoots past Oakland University's goalie to score her first collegiate goal. Fellow freshman Ashley Rodrigues scored the other Eagles' goal. The women's soccer team won the exhibition match 2-0 at Scicluna Field Aug. 20.
Photo by Randy Mascharka

Get to
FOCUS EMU
Online

Feature



August 29, 2006 issue
**Seventy-three
 faculty celebrate
 service
 anniversaries this
 month**

By Leigh Soltis

The following Eastern Michigan University faculty are celebrating service anniversaries this month.

40 years

Paul Howard (36 years), professor, mathematics



Duncan

35 years

Jeffrey Duncan, professor, English language and literature

Anthony Iannaccone, professor, music and dance

Charles Monsma, professor, political science

Sheila Most, professor, English language and literature

Fathi Sokkar, professor, computer information systems

Jiu Upshur, professor, history and philosophy

Geoffrey Voght, professor, foreign language and bilingual studies



Stevens

Henry Aldridge (34 years), professor, communication and theatre arts

Pedro Sanchez (34 years), professor, computer information systems

Kenneth Stevens (34 years), professor, communications and theatre arts

Ronald Westrum (34 years), professor, School of Technology Studies

Back to Current Issue
FOCUS EMU
Online

Michael Jones (33 years), professor, history and philosophy

Glenda Kirkland (33 years), professor, music and dance

30 years

James Holoka, professor, foreign language and bilingual studies

Barbara Scheffer, professor, School of Nursing

Glenn Walker, professor, biology

Patricia Williams, professor, fine arts



20 years

Christopher Bocklage, professor, fine arts

Timothy Carroll, professor, mathematics

Shenghui Chu, professor, mathematics

David Clifford, associate professor, School of Health Sciences

Clifford

Daniel Fields, professor, School of Engineering Technology

Sarah Huyvaert, professor, teacher education

Joann McNamara, professor, music and dance

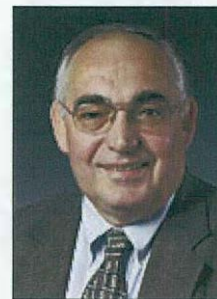
Ross Nord, professor, chemistry

Marlene Rubenfeld, associate professor, School of Nursing

Richard Rubenfeld, professor, fine arts

Alane Starko, professor, teacher education

Joellen Vinyard, professor, history and philosophy



Fields



15 years

Nancy Allen, professor, English language and literature

Helen Aristar-Dry, professor, English language and literature

Catherine Bach, professor, biology

Kathleen Beauvais, professor, teacher education

Aristar-Dry

Anne Bednar, professor, teacher education

James Berry, professor, leadership and counseling

Robert Citino, professor, history and philosophy

Barbara Glover, associate professor, library

Cristina Jose-Kampfner, professor, teacher education

Theodore Ligibel, professor, geography and geology

Kevin Miller, professor, music and dance

Olga Nelson, professor, teacher education

Diana Pancioli, professor, fine arts

Carole Pawloski, professor, fine arts

William Price, professor, leadership and counseling

Mahmud Rahman, professor, accounting and finance

Barbara Richardson, professor, sociology



Citino



Harash Sachdev, professor, marketing

James Sheerin, professor, physics and astronomy

Weidian Shen, professor, physics and astronomy

Theodore Ligibel, professor, geography and geology **Citino**

Kevin Miller, professor, music and dance

Olga Nelson, professor, teacher education

Diana Pancioli, professor, fine arts

Carole Pawloski, professor, fine arts

William Price, professor, leadership and counseling

Mahmud Rahman, professor, accounting and finance

Barbara Richardson, professor, sociology



Harash Sachdev, professor, marketing

James Sheerin, professor, physics and astronomy

Weidian Shen, professor, physics and astronomy

Pamela Speelman, professor, School of Engineering Technology

Shen

James Stein, associate professor, School of Engineering Technology

Sue Stickel, professor, leadership and counseling

James Thornton, professor, economics

Jose Vites, associate professor, chemistry

Thomas Vosteen, professor, foreign language and bilingual studies

10 years

Michael Angell, associate professor, biology

Alphonso Bellamy, professor, School of Technology Studies

Ann Blakeslee, professor, English language and literature

Marcia Bombyk, professor, School of Social Work



Blakeslee



Betty Brown-Chappell, professor, School of Social Work

Kimberly Cole Luevano, associate professor, music and dance

Beverly Goodman, associate professor, English language and literature

Michael Angell, associate professor, biology

Blakeslee

Alphonso Bellamy, professor, School of Technology Studies

Ann Blakeslee, professor, English language and literature

Marcia Bombyk, professor, School of Social Work



Betty Brown-Chappell, professor, School of Social Work

Kimberly Cole Luevano, associate professor, music and dance

Beverly Goodman, associate professor, English language and literature

Robert Hanson, professor, accounting and finance
Brown-Chappell

Giri Jogaratnam, professor, School of Technology Studies

David Kass, professor, biology

Vance Kennedy, professor, chemistry

Linda Lewis-White, professor, teacher education

Hitomi Oketani-Lobbezoo, associate professor, foreign language and bilingual studies

Dennis Patrick, professor, communication and theatre arts

Anita Rich, professor, communication and theatre arts

Pamela Ruiter-Feenstra, professor, music and dance

Patricia Williams-Boyd, professor, teacher education



Rich

Feature

FOCUS EMU
Online

August 29, 2006 issue
**Three former EMU
 employees die**

By Leigh Soltis



Three former Eastern Michigan University employees, including a physics professor, died this month.

Walter L. Gessert, professor of physics at Eastern Michigan University from 1960-1986, died Aug. 19. He was 87.

Gessert attended EMU as an undergraduate and received his bachelor's degree in 1944. He received his master's degree from Wayne State University and his Ph.D. from Michigan State University.



Gessert

After receiving his doctorate, Gessert worked as a physicist for the U.S. Rubber Co. and, later, as group leader in passenger tire design for Uniroyal. While at Uniroyal, Gessert met a co-worker whose baby had a suspected heart defect. This led to his interest in ballistocardiology, a subject he would research for many years.

"That baby's heart, 18 years ago, was found to be not defective," said Gessert, in a 1976 article about his work, "but our research has continued."

While teaching at EMU, Gessert conducted cardiac research in the basement of Harper Hospital in Detroit. His work focused on creating a ballistics bed. Ballistics, in this case, refers to the cardiac movements involved in forcing blood into the arteries and the recoil of the body. A ballistics bed is not a weapon, but a device that can detect potential problems in the heart and arterial system.

In addition to ballistocardiology, Gessert also studied optics and acoustics. He taught courses in pre-medical, non-calculus physics; electrical measurements; and a course, musical acoustics, that he created. The course focused on the physics of sound, exploring the nature of music and its production. It has since evolved to be called "Physical Sciences in the Arts" or PHY101.

"He loved the musical acoustics course and wanted to continue teaching it even after he retired," said Alexandria Oakes, department head of physics and astronomy. "He taught part-time for two to three years after his retirement."

"He truly loved teaching," said John Wooley, emeritus faculty and a former colleague of Gessert's. "You can't say that about everybody."

In 1978, Gessert was elected president of the EMU Faculty Assembly. He also was a member of the Acoustical Society of America, the Optical Society of America, the American Association of Physics Teachers, Sigma Xi, Pi Mu Epsilon and Sigma Pi Sigma. He was granted emeritus status upon his retirement.

In the community, Gessert was active in the Ypsilanti Kiwanis Club and

Emmanuel Lutheran Church, where he served on church counsel and taught Sunday school for 20 years.

Survivors include his wife, Betty; three sons, Gregory, David and John; and nine grandchildren.

A funeral service took place Aug. 23 at Emmanuel Lutheran Church. Contributions in his memory may be made to Emmanuel Lutheran Church or Lutheran Social Services of Michigan.

Beatrice Jenkins, who worked in the home economics department at Eastern Michigan University, died Aug. 13. She was 82.

After leaving EMU in 1969, Jenkins worked at the Ford Motor Plant in Ypsilanti. She retired in 1986, and moved to Georgia in 1998. She was a member of the Nurses' Guild at Second Baptist Church in Ypsilanti and the Christian Missionary Baptist Church in College Park, Ga.

Survivors include one son, Lawrence Jenkins; two daughters, Valerie Taylor and Georgia Berry, all of Jonesboro, Ga.; one sister, Edna Cole; two granddaughters; and three great grandsons.

A funeral service took place Aug. 19 at Second Baptist Church.

Helen Margaret Hill, who worked as a bookkeeper assistant in the audit department at Eastern Michigan University for 18 years, died Aug. 5. She was 84.

Hill graduated valedictorian of her class at Walbridge High School, in Walbridge, Ohio. She married her high school sweetheart, LaMar J. Hill, and the two moved to Ypsilanti after LaMar's discharge from the Navy. She lived in Ypsilanti for 57 years, where she raised three children. She was an active member of the First United Methodist Church of Ypsilanti, United Methodist Women, Church Women United and Begole Study Group.

Survivors include two daughters, Cynthia Low Burch and Melinda Sue Long; one son, Rodney LaMar Hill; and eight grandchildren.

A funeral service took place Aug. 10, at First United Methodist Church. Contributions in her memory may be made to either First United Methodist Church or Arbor Hospice Care.

EMU by the numbers

FOCUS EMU

Online

The new student center is expected to have its grand opening Nov. 6. A key feature of the 181,000-square-foot facility is the breadth of meeting space that will be available for a variety of campus activities, meetings and business conferences. Most of the meeting rooms are located on the third floor (see blueprint below), with large banquet rooms and an auditorium on the second floor. Approximately 660 events have already been booked for the facility from November through June 2007. The following are some key numbers about meeting space in the new student center.

Number of meeting rooms **16**

Available seating **1,946 (theater style)**

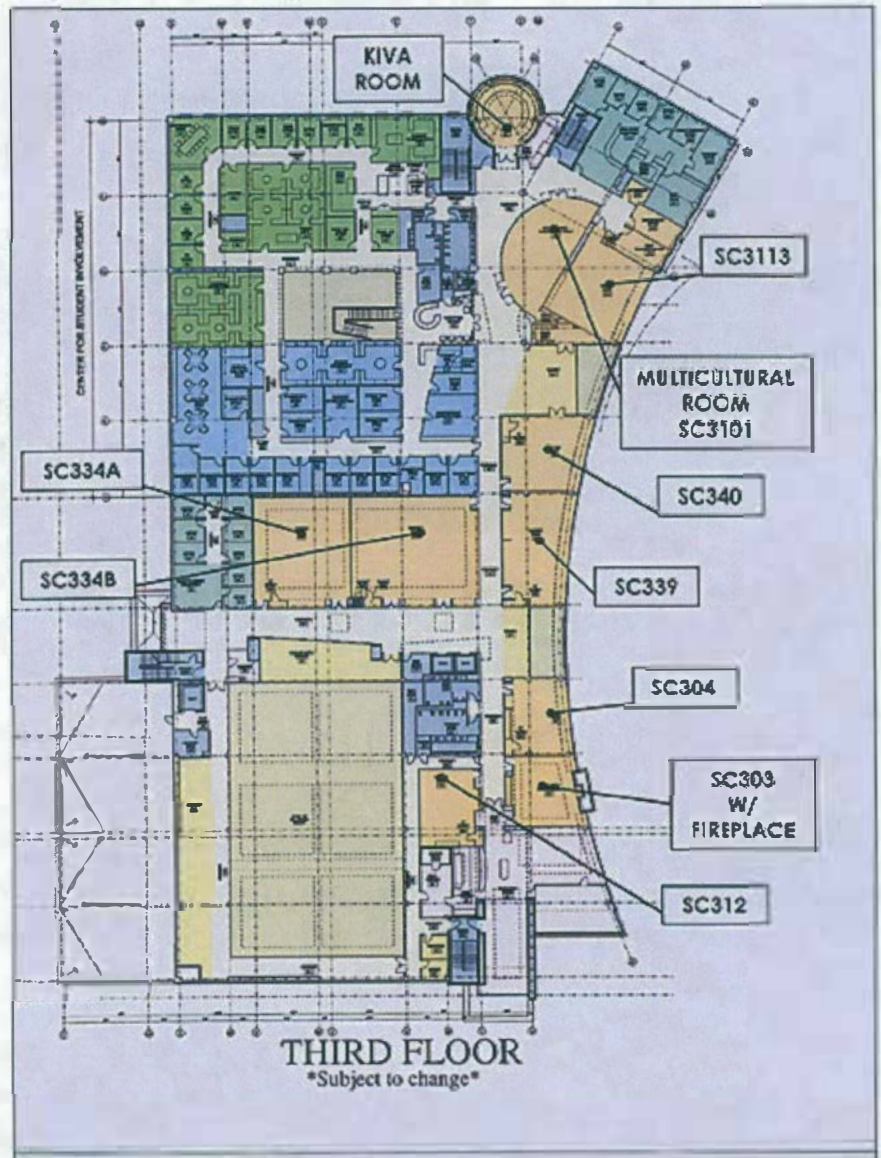
Available seating **1,058 (rounders format)**

Largest meeting room **850 (Grand Banquet Room A and B combined)**

Smallest meeting room **35 (Room 171, first floor)**

Auditorium **250 (second floor)**

Source: Dining Services



News Briefs

FOCUS EMU
Online

The following are news briefs about important activities and events happening at Eastern Michigan University.

Aug. 29, 2006 issue
News Briefs

By Ron Podell

- President Fallon hosts all-campus picnic Sept. 12
- New student orientation takes place Sept. 2-5
- Board of Regents to meet twice during fall
- Colleges schedule fall conferences
- Five tailgates slated for football season
- Meijer Madness event set for students Sept. 7
- EMU to participate in College Tour 2006
- Fall Job Fair scheduled Sept. 12
- Student Organization Job Fair scheduled Sept. 12
- United Way Day of Caring scheduled Sept. 14
- Fall tuition waiver set for Sept. 15
- WEMU named media sponsor at Detroit International Jazz Festival
- New faculty orientation scheduled Aug. 30-31
- Instructional delivery report available

- **President Fallon hosts all-campus picnic Sept. 12:** Eastern Michigan University President John Fallon invites the campus community to join him at an all-campus picnic Tuesday, Sept. 12, 11 a.m.-1:30 p.m., Mark Jefferson Mall, to celebrate the fall semester and welcome newcomers to campus. Bring your friends, colleagues and appetite, and help welcome the newest members to EMU's family. For more information, call Sheila Larnhart, 487-2483.



PICNIC LUNCH: Two Eastern Michigan University students enjoy a hotdog and water during last year's all-campus picnic, hosted by EMU President John Fallon.



LUNCH TIME: Eastern Michigan University students enjoy lunch at Cady's in historic Depot Town as part of YpsiFest. YpsiFest is part of new student orientation and allows students the opportunity to frequent restaurants in Ypsilanti and Depot Town. Students use their "Ypsi Bucks" to enjoy lunch at reduced prices.

New student orientation takes place Sept. 2-5: More than 2,200 new students will be welcomed to EMU Fusion, EMU's new student orientation program, scheduled Saturday, Sept. 2, through Tuesday, Sept. 5. Activities Sept. 2 include: residence hall move-in, commuter session, a family picnic, parent sessions, Eastern Expectations and an opening convocation. Activities Sept. 3 include: campus, library and class schedule tours; the Close-up Theatre Troup; McKenny Extravaganza and Playfair! Activities Sept. 4 include: transfer student orientation, Explore EMU, Places to Go and Fajita Fest. Activities Sept. 5 include: Fit for Fun, a 2-mile fun walk/jog around campus; Community Plunge, a community-service event for new

students; and YpsiFest, where students have the opportunity to frequent restaurants in Ypsilanti and Depot Town. For more information about Fusion, visit www.emufusion.org or call Campus Life, 487-3045.

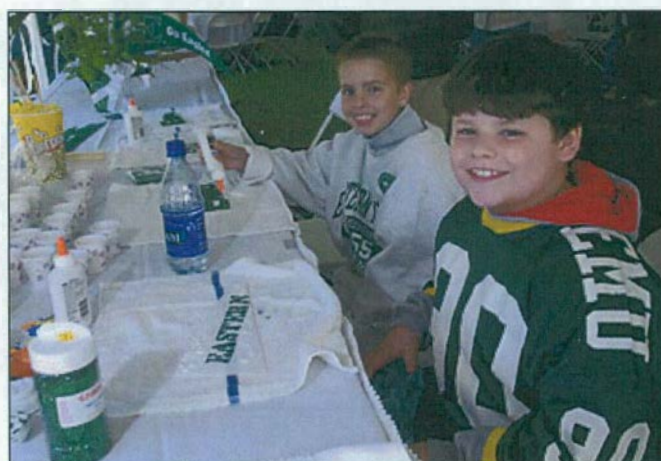
- **Board of Regents to meet twice during fall:** The Eastern Michigan University Board of Regents is scheduled to meet Tuesday, Sept. 19, and Tuesday, Nov. 14, this year. The committee schedule has changed this year. The schedule for the Sept. 19 and Nov. 14 meetings is as follows: Lunch for Board, 11:30 a.m.-12:30 p.m., Room 204; Athletic Affairs Committee, 12:45-1:30 p.m., Room 201; Faculty Affairs Committee, 12:45-1:30 p.m., 205 Welch Hall; Student Affairs Committee, 1:45-2:30 p.m., 201 Welch Hall; Educational Policies Committee, 1:45-2:30 p.m., 205 Welch Hall; and Finance and Audit Committee, 2:30-4 p.m., 201 Welch Hall; Regular meeting, 12:45-1:15 p.m., 201 Welch Hall; Regular Board meeting, 4:15 p.m., 201 Welch Hall; Board dinner, 6 p.m.



Karen Valvo is chair of the EMU Board of Regents.

- **Colleges schedule fall conferences:** The College of Education Fall Conference is scheduled Sept. 5, 8 a.m.-noon, first floor, Porter Building. The College of Health and Human Services has scheduled its annual fall conference Sept. 5, 8:30 a.m.-1 p.m., 108 Marshall. The College of Business has scheduled its fall conference Sept. 8, 9 a.m.-noon, 114 Owen. The College of Technology has set its fall conference Sept. 8, 9-11 a.m., Guild Hall, McKenny Union. The College of Arts and Sciences Fall Faculty Meeting is slated for Sept. 22, 2-3:30 p.m., Sponberg Theatre.
- **Five tailgates slated for football season:** The Office for Alumni Relations calls all EMU alumni and friends to celebrate with fellow fans at upcoming "Go Green" alumni tailgates.

"The Office for Alumni Relations is pleased to sponsor five football tailgates this fall, both at home and on the road," said Vicki Reaume, director for alumni relations. "They are great opportunities to meet fellow EMU supporters, enjoy great food, and get filled with green and white spirit before kickoff."



NEW TO THE NEST: These two young EMU football fans enjoy refreshments at a tailgate outside Rynearson Stadium last season. The Office for Alumni Relations has scheduled five "Go Green" tailgates this football season.

The tailgate schedule is as follows:

EMU vs. Michigan State University, Saturday, Sept. 9, 1:30 p.m. tailgate and 3:30 p.m. kickoff, East Lansing. The tailgate will take place at Demonstration Hall Field, approximately one-third mile northwest of the stadium. Advanced tailgate tickets required. Tickets are \$15 per person, \$5 for 12 and under, and free for children five and under.

EMU vs. Northwestern, Saturday, Sept. 16, 11 a.m. tailgate, 1 p.m. kickoff, Evanston, Ill. The tailgate will take place at Peter Jans Golf Course (1031 Central St.) two blocks east of the stadium. Advanced tailgate tickets required.

Tickets are \$15 per person, \$5 for 12 and under, and free for children five and under.

EMU vs. Central Michigan, Saturday, Sept. 23, 2 p.m. tailgate, 3:30 p.m. kickoff, Rynearson Stadium. Tailgaters will have an opportunity to meet Derrick Gragg, EMU's new athletic director. Donations for the Alumni Scholarship Fund will be collected at the tent.

EMU vs. Toledo (Homecoming), Saturday, Oct. 21, 2 p.m. tailgate, 4 p.m. kickoff. Donations for the Alumni Scholarship Fund will be collected at the tent.

EMU vs. Navy, Saturday, Nov. 11, 11 a.m. tailgate, 1 p.m. kickoff, Ford Field, Detroit. The tailgate will take place at the Rooftop Suite (space is limited). Advanced tailgate tickets are required. Tickets are \$7 per person, \$5 for 12 and under, and free for children five and under.

Tailgates will include food, spirit items and appearances by the EMU cheerleaders and Swoop, the team mascot. For more information or to R.S.V.P., call the Office for Alumni Relations 487-0250.

- **Meijer Madness event set for students Sept. 7:**

Eastern Michigan University students can enjoy free samples and do some back-to-school shopping at Meijer Madness Thursday, Sept. 7, 7-11 p.m., at the Ypsilanti Meijer store on Carpenter Road. The event will include food, giveaways, X-Boxes and more. Free transportation from EMU to the Ypsilanti Meijer will be available from 6:45 p.m.-11 p.m. at the following bus



PERUSING THE AISLES: Two EMU students search the aisles for good deals during last year's Meijer Madness. This year's event is scheduled Sept. 7, 7-11 p.m., at the Ypsilanti Meijer store on Carpenter Road.

stops: Ann Street (near the First-Year Center), Washtenaw Avenue (near McKenny Union) and Oakwood (near the Hill/Hoyt residence halls). Approximately 4,500 students are expected. To participate, you must present EMU identification, such as your current EMU student ID card, driver's license or fall course printout. For questions, or if you would like to volunteer, call 487-2226 or e-mail eric.ward@emich.edu.

- **EMU to participate in College Tour 2006:** As part of College Tour 2006, Eastern Michigan University will receive one three-minute segment informing viewers about what it has to offer and how to receive additional information about EMU. The segment will include information about tuition and scholarship programs, available financing, fields of study, campus life, extra-curricular activities, housing, campus facilities, the application process, testimonials of current students and interviews with faculty and staff.

College Tour 2004 will be broadcast by Channel 7 WXYZ-TV Saturday, Sept. 9, 7:30-8 p.m.; and again Sunday, Sept. 10, 1-1:30 p.m. This program is designed for anyone, regardless of age or degree level, looking to further their education. For more information, go to www.wxyz.com

- **Fall Job Fair scheduled Sept. 12:** A Fall Job Fair, sponsored by the Career Services Center, is scheduled Tuesday, Sept. 12, 11 a.m.-2 p.m., on the mall outside McKenny Union. Campus departments have until

Friday, Sept. 1, to make their reservations. Space will be limited to one table and four chairs for each department. In an effort to offer more part-time job opportunities for EMU students, some local employers have been invited to participate in the fair. To reserve a space, call Mary Jones, 487-1005, or e-mail mary.jones@emich.edu

- **Student Organization Job Fair scheduled Sept. 12:** A Student Organization and Volunteer Job Fair is scheduled 11 a.m.-2 p.m., outside of McKenny Union. The event is free. Registration forms are available at the front desk at Campus Life (11 McKenny Union) or e-mail campuslife@emich.edu. For more information, call Campus Life at 487-3045.



A LITTLE CARE: Jeffrey Nesmith, assistant director of the Department of Public Safety, helps clean up a site during last year's Washtenaw United Way Day of Caring. Approximately 260 EMU employees and students are expected to volunteer at this year's event Sept. 14.

Festival since it began 27 years ago. Renamed the 'Boogie Bayou/Pyramid Stage,' the stage will host several New Orleans-based and themed bands including Buckwheat Zydeco, Marcia Ball, and Beau Soleil with Michael Doucet.

United Way Day of Caring scheduled Sept. 14:

This year's Washtenaw United Way Day of Caring is Thursday, Sept. 14. EMU will be fielding a number of teams. Breakfast will be served from 7:30-8:30 a.m. at Washtenaw Community College. Approximately 260 EMU volunteers will be at various sites from 9 a.m.-3:30 p.m. NOTE: No more teams can sign up at this point. For questions, call Sheilah Larnhart, 487-2483.

Fall tuition waiver deadline set for Sept. 15:

The deadline for fall 2006 tuition waivers and the last day for a 100 percent refund is Friday, Sept. 15. For more information, call the Benefits Office, 487-3195.

WEMU named media sponsor at Detroit International Jazz Festival:

For the second year in a row, 89.1, FM WEMU, has been named the media sponsor of the Pyramid Stage at the 2006 Detroit International Jazz Festival, Sept. 1-4. WEMU has been a sponsor of the

"This is a perfect fit for WEMU," said Marketing and Development Director Mary Motherwell. "Not only does WEMU routinely play all the artists on the stage, but we also have special ties to New Orleans. Last fall, our listeners pledged \$8,000 to support public radio in New Orleans, after Hurricane Katrina and Rita, as part of our pledge drive and we have been actively following developments in the city since and helping any way we can. We're thrilled to showcase these performers on the WEMU Boogie Bayou/Pyramid Stage and hope it reminds festival attendees that there is still a long way to go in New Orleans."

The Detroit International Jazz Festival begins with a special performance featuring the Funk Brothers and the Temptations Revue, starring Dennis Edwards, Friday, Sept. 1, and runs through Monday, Sept. 4, on six stages located in Hart Plaza, on Woodward Avenue, and at Campus Martius Park in downtown Detroit. Headliners include Taj Mahal, Sergio Mendes, Ahmad Jamal, Dr. John and the Lower 911, The Dirty Dozen Brass Band, and Richie Havens. A complete festival schedule is available at www.detroitjazzfest.com

- **New faculty orientation scheduled Aug. 30-31:** An orientation for newly hired, tenure-track faculty is scheduled Aug. 30-31 (both all-day sessions). Speakers include EMU President John Fallon, Provost and Vice President for Academic Affairs Donald Loppnow and EMU-AAUP President Howard Bunsis, professor of accounting and finance.

The Aug. 30 session will include an introduction to EMU and the Ypsilanti community, a workshop on benefits and a resource fair with more than 30 exhibitors from various campus departments. The day will end with a picnic at the Lake House. The Aug. 31 session will include a review of best teaching and learning practices at EMU and conducting research at EMU. The orientation concludes with a performance by Close-Up, a student theatre troupe, in Pease Auditorium.

- **Instructional delivery report available:** The Commission on the Future of Instructional Delivery has issued its final report. The Commission was created in 2004 by former interim EMU President Craig Willis to form recommendations on instruction. The Commission's work resulted in final reports submitted by its five subcommittees, which can be accessed on the Commission's website at <http://www.emich.edu/cfid/>. For more information, contact the Provost's Office at 487-3200.

Why I work at Eastern Michigan University

FOCUS EMU

Online

August 29, 2006 issue



I came to Eastern in the fall of 2003, to become the director of the Women's Studies program. I'm originally from Texas and I had only been to EMU once, for my interview. That interview took place in a heavy snowstorm. Everyone apologized for the weather, but I was thrilled. It had been years since I had seen snow in Texas!

I was attracted to Eastern's Women's Studies program because it was well established and successful. I liked the emphasis on teaching at this school and was eager to participate in a graduate program in Women's Studies.

I really enjoy working with the students at EMU. There are a large number of nontraditional students who have to balance work, family and education. I have a tremendous amount of respect for what they do. As busy as they are, they still try to advance themselves and their understanding of the world.

Last year, the Women's Studies program became Women's and Gender Studies. This opens up opportunities to study masculinity, gender identity and sexuality. We can study these things in the contexts of different cultures and societies.

This is a great campus for Women's and Gender Studies. Support for the program is clear at all levels. Women's and Gender Studies is an interdisciplinary program; we are represented in all five colleges. Though my specialty is women's history, students also can take classes in art, economics, technology, psychology and business...many of the subjects taught here at Eastern.

Though most of our majors are women, about 20 percent of the students in Women's and Gender Studies classes are male. They often finish these classes with a better understanding of the forces that shape women and the challenges they face. It helps them to better understand the significant women in their lives, whether it's a

mother, sister or partner.

The program is, of course, also great for women. It helps them understand why they are the way they are. It's a major that brings about a lot of self-awareness. It makes visible to women patterns that have always been present in their lives, but that they may not have seen nor had the tools to understand. I like being part of a program where students can immediately apply the things they learn in class to their personal lives.

NOTE: Linda Schott will become associate dean of the College of Arts and Sciences, effective Sept. 1.

