

## Historic events mark opening of EMU's 148th year

By Kate Bullach and Pat Mroczek

EMU will open the doors for its 148th academic year when classes begin today. There are a number of items to report about the University, including some historic events planned for 1997-98.

For example, join "The Beaming" Saturday, Sept. 20, when your signature can be part of a time-capsule of sorts in EMU's new convocation center. Become part of EMU history by attending the pre-game ceremony at Rynearson Stadium. Participants will sign a painted, iron beam that will be hoisted in place by a giant crane. The event precedes the 6 p.m. Kent State football game. More details later.

Norm Tyler, associate professor of geography, will

make some history of his own this fall when Eastern offers "Issues of Historic Preservation," continuing the University's move onto the World Wide Web. The class begins Sept. 8 for audit or credit. Information is available at Continuing Education at 487-0407.

Tyler's course is part of EMU's Distance Learning effort, which is slated to be on-line. Sixteen faculty members are creating new Internet course offerings. More than a dozen courses should be ready by winter for students on-line. The Virtual EMU discussion is at <http://www.caucus.emich.edu> or call 487-9046.

There are other important changes, additions and improvements this fall.

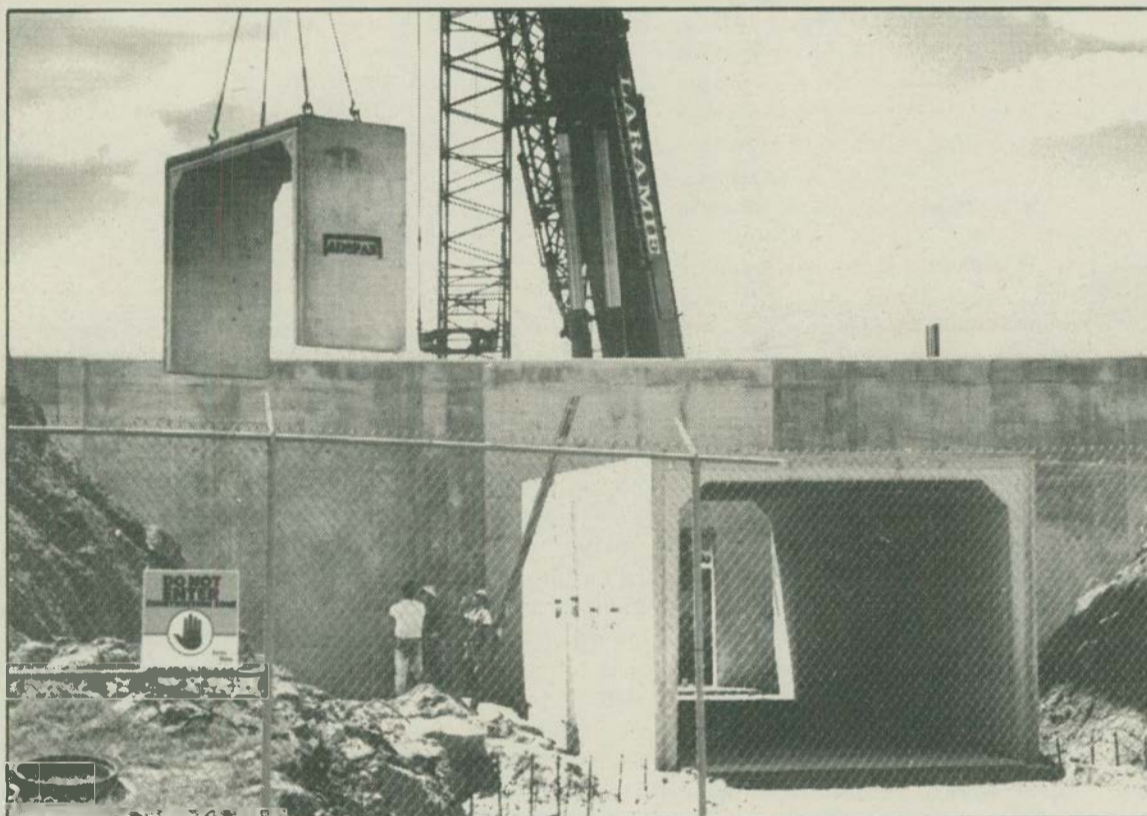
■ Enrollment in entry-level classes in the College

of Business is up by 13 percent, with renewed interest in accounting, information systems, management and marketing, among others.

■ Fall is the first semester for two new degrees: a master's degree in computer science and a bachelor's in women's studies. Arts & Sciences invested in new equipment for computer labs in chemistry, computer science and the social sciences and also improved technology in large classrooms. Several sciences (biology, chemistry and geology) will place greater emphasis on undergraduate research. And Bernie O'Connor's advising offices in Pray-Harold proved

Please see EMU, PAGE 2

### NEW DIGS



**TUNNEL VISION:** Workers place the sections of the tunnel that will connect the new convocation center to Rynearson Stadium.

## Campus Life offers diverse programming

■ Schedules, page 3

Last week's announcement that EMU was one of the most diverse campuses in the country probably didn't surprise Melissa Ginotti, program coordinator for the Campus Life Programs Office.

After all, it's Ginotti's job to build a lecture and performing art schedule every year which will appeal to the many different groups of the Eastern Michigan community.

"We purposely are going for diversity," said Ginotti of this year's lineups for the Spectrum Lecture Series and the Performing Arts and Concerts Series.

"There are a lot of different people who work and go here," Ginotti said. "We want to hit a broad base of the population on campus."

That should not be a problem.

The Spectrum Lecture Series, which is free and open to the public, offers an eclectic group of speakers that includes an inspirational talk show host, the co-founder of the United Farm Workers of America, a debate on UFOs hosted by a cast member of the "X files" television show and a well-known B-movie film director.

"That was one of our goals for the lecture series, to add a wide variety of issues and topics," Ginotti said.

"For the performing arts series our

Please see CAMPUS, PAGE 3

## EMU's on the move with construction, office shuffle

By Ward Mullens

"Under construction" and "We've moved."

They are the signs of the times this fall on the EMU campus.

Construction continues on the new Bruce Halle Library and the new convocation center.

"The library is coming along great," said Dan Klenczar, project manager for the University. "It's 75-80 percent completed. It should be open and on-line in June 1998."

"The construction on the convocation center is going well. It's about 20 percent complete and it's on schedule," Klenczar said.

The convocation center is scheduled to open October 1998, in time for the first basketball game, said Klenczar.

Another construction project that will be taking shape this fall is the new aquatic and terrestrial ecology lab.

The lab will be built behind McKenny Union in the area adjacent to Mark-Jefferson and Briggs Hall.

There has been no date given for

### WHERE ARE THEY NOW

Several University offices moved during the spring and summer. New office locations are:

Graduate Admissions.....401 Pierce  
Graduate Records.....302 Pierce  
Development.....Cooper Building,  
2000 Huron River Drive

the completion of the lab.

While noticeable progress has been made on the two major campus construction projects, what may not be so obvious to some returning faculty, staff and students are the handful of offices which changed locations during the spring and summer.

The "We've moved" sign still hangs on the door of Starkweather Hall, where graduate admissions and graduate records once were housed.

Both graduate offices have moved to Pierce Hall. Graduate Admissions can be found in 401 Pierce and Graduate Records is in 302 Pierce. The Graduate School's Dean's Office is located in Starkweather Hall. The phone numbers

for the offices remain unchanged.

The merger of Graduate Admissions with undergraduate admissions was in response to the desire of students, faculty and staff for a more user-friendly process, said Courtney McAnuff, vice president of the Division of Enrollment Services.

"We are committed to easing the process and removing barriers to graduate enrollment," McAnuff said. "The challenge to students should be academic, not procedural."

Another major move was that of the Development Office from the basement of Welch Hall to the offices of the EMU Foundation in the Cooper Building, 2000 Huron River Drive.

That move was part of a joint operating agreement which transferred Development operations to the Foundation.

Although these moves may not seem like a lot, they are just the first round. More than 20 offices will start to vacate Goodison Hall this fall so that work can begin on the new Health and Human Services Building.

### INSIDE

PAGE 2

■ Regents schedule  
■ Feature on EMU Bookstore manager  
Cindy Marshall

PAGE 3

■ Lecture and concert series schedules

PAGE 4

■ Job openings  
■ Holiday schedule, home football schedule



**BOARD OF REGENTS**

The next Board of Regents meeting is Tuesday, Sept. 16, 1997.



The schedule for the meeting is:

- Student Affairs Committee,**  
8 a.m., 205 Welch
- Faculty Affairs Committee,**  
8 a.m., 201 Welch
- Educational Policies Committee,**  
9:30 a.m., 205 Welch
- Finance Committee,**  
10:30 a.m., 201 Welch
- Regular Meeting,**  
noon, 201 Welch
- Recess for lunch,**  
12:30 p.m.
- Reconvene Board Meeting,**  
1:30 p.m., 201 Welch

For information, call 487-2410.

The members of the EMU Board of Regents are:

- Philip Incarnati (Chair), Dr. Gayle Thomas (Vice Chair), Joseph Antonini, Robert DeMattia, Dr. Rosalind Griffin, Michael Morris, Carl Pursell, and Col. William Stephens.

**TRANSITIONS**

Five faculty members died during the summer.

■ Professor Emeritus Edgar Jones, who was an integral part of Eastern Michigan University's Academic Advising Center and who helped establish the Academic Mentoring Program, died July 26. He was 71.

"Ed Jones virtually created the Academic Advising Center," said Charles Fulford, the current assistant director of the center.

Jones retired from EMU in 1992 after 35 years of service. He spent several years as an instructor and an assistant professor of English Literature, before becoming the director of academic advising in 1964.

From 1975-80 Jones served in two other roles for the University. He was the assistant director of registration and the assistant to the vice president of instruction.

■ Maurice W. Riley, professor emeritus of music, died in July. He was 85.

Riley was a professor of violin and viola at EMU from 1947-1977. Riley and his wife, Leila, established the Riley-Lockie Scholarship Fund to provide financial assistance to talented EMU music students.

■ Professor Emeritus Norman Risk died May 10. He was 79.

Risk, who was at EMU from 1949-1974, was a professor of technology.

Risk earned his bachelor's degree from Michigan State Normal College in 1942.

■ Professor Emeritus Thomas Monahan died in May. Monahan, 76, was a professor of teacher education at EMU from 1953-1983.

■ Dr. Gene E. (Doc) Megivron died in May. Megivron was an associate professor at EMU from 1962-65.

Megivron was a graduate of Michigan State Normal College, earning his bachelor's degree in 1953 and his master's degree in 1959. He was also a past president of the EMU Alumni Board.

**Marshall wants bookstore, new year to start on right foot**

By Linda Rider

Considering the fall semester is just getting started and thousands of students will be pouring through McKenny Union, EMU Bookstore Manager Cindy Marshall is a picture of calm.

While it may be because she is very well organized, has a great staff or that she is a veteran of numerous fall campaigns, it probably has more to do with kickboxing.

"Kickboxing is my release," said Marshall. "I don't compete and probably never will. But, it's very relaxing for me."

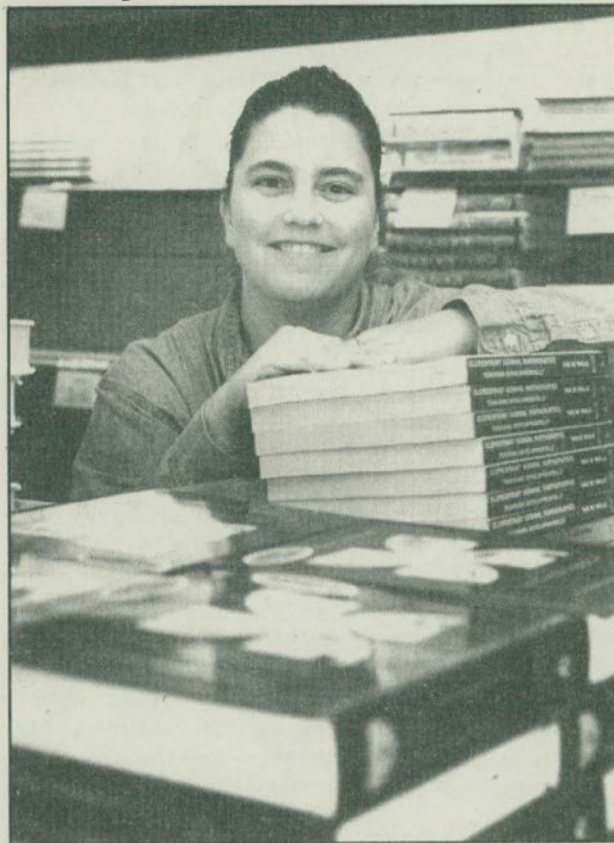
This is Marshall's second fall rush at the EMU Bookstore. So, she already knows about bringing in staff on Saturdays to price books, setting up the front end of the store with back to school specials and bringing in nearly a dozen extra cash registers to accommodate student purchases.

"We will begin running the 12 registers Aug. 30, when the freshmen move in and start cutting back on that number as the days move on," said Marshall. "We'll keep the one register separate for requisitions for faculty and staff as well as the refund/buy-back registers, which are in a separate location in the store."

Marshall admits that avoiding long lines during those first few days will be a real challenge for everyone. "We try to keep the lines moving, but those first few days are crazy," she said. "A lot of faculty and staff are coming by early to get office supplies for the fall term."

In March 1996, she was promoted to manager of the EMU Bookstore after a year as assistant manager at Wayne State University's bookstore, also owned by Barnes and Noble College Bookstores Inc. Marshall started with the company as a cashier at their Rockford (Ill.) College store while a student, worked up through shipping and receiving, bookkeeping, and

**Buy the book**



**COVER TO COVER:** EMU Bookstore Manager Cindy Marshall is ready to begin the next chapter of the school year.

**BOOKSTORE HOURS**

**EMU Bookstore Hours for September:**

3, 4.....	8:30 am - 8 pm
5.....	8:30 am - 6 pm
6.....	10 am - 5 pm
7.....	CLOSED
8, 9.....	9 am - 8 pm
10, 11.....	9 am - 7 pm
12.....	9 am - 5 pm
13.....	11 am - 3 pm
14.....	CLOSED

The bookstore returns to its regular store hours the week of Sept. 15. The hours are:

Monday/Tuesday	9 am - 7 pm
Wednesday/Thursday	9 am - 6 pm
Friday	9 am - 4 pm
Saturday	11 am - 3 pm

finally assistant manager at Rockford. She jumped at the opportunity to become assistant manager at Wayne State, a much larger store, and finally at EMU, a larger store yet.

"Cindy has added strength and stability to the bookstore," said Don DiVirgilio, Barnes & Noble regional manager. "She and Assistant Manager Maggie Fulton have done a wonderful job working with staff and with the EMU faculty."

Of course, keeping the customer happy has something to do with Marshall's success.

This fall, Marshall is offering

students "price-matching plus," a program that matches prices on textbooks. If students find that the same book at another store is cheaper, she will match that price, plus give the student a dollar and a 10 percent coupon toward the purchase of clothing (within one month.)

Marshall manages six full-time and salaried staff members, including retired music professor Harry Bowen. The number of part-time employees varies with the term and the time of year. "The staff members are fantastic," said Marshall. "They are the core of this operation and are those who make it work."

**EMU, from page 1**

successful and are back for the year.

■ A new plan now deals with information technology disasters such as floods, power outages or hardware failures. The Business Continuity Plan was the brainstorm of University Computing and Business and Finance. The plan focuses on early identification of risks and taking appropriate low-cost actions to reduce them. Call 487-1491.

■ The Children's Institute debuted a full-day kindergarten. From 9 a.m. to 4 p.m. Sept. 2 through June 26, a kindergarten will be provided for \$5,400 for children of enrolled EMU students and \$5,600 for others. Call 487-1126.

■ Students Jenna Merritt of Belleville and Ty James of Clifford have formed "People Work," a social change and community service group looking for volunteers to do random acts of kindness.

■ Housing and Dining Services reports a full house, even with six floors of Pittman Hall reopened for upperclass single and double rooms. About 3,600 students are living on campus this fall. They'll enjoy computer connectivity in several residence halls, cable TV, call waiting, closed-circuit security cameras in entrances and a 10 p.m. check-in for improved crime prevention. Students in Eastern Towers (Hill, Hoyt and Pittman) will continue to savor an expanded room service dining option.

■ Eastern became a Designated Fingerprinting Service for the U.S. Immigration and Naturalization Service in August. The free service, available at Public Safety for staff and students only, allows inter-

national students and faculty to be served locally instead of visiting INS offices in Detroit or elsewhere. Employment applicant fingerprint cards also are available at Public Safety. Call 487-1222.

■ Also in August, Eastern's commitment to diversity gained national attention in U.S. News' America's Best Colleges guidebook. One reason for the recognition was hosted yesterday when the Second Annual Students of Color Orientation welcomed new students to campus. Other celebrations planned for the fall semester include Hispanic Heritage Month in September and October, Investing in Abilities Week and National Coming Out Week also in October, Native American Heritage Month and Women's Studies Month in November and HIV/AIDS Awareness Week in December.

Future University events include:

Colorful sights and historic sounds will come to Bowen Field House during the Sixth Annual Pow Wow Oct. 4-5. Sponsored by Eastern's Center for Multicultural Affairs and the Native American Student Association, Native American dancing and singing will be performed with fine arts and crafts on sale. Call 487-2377.

Also on Oct. 4, plan to attend "A Family Fair" during EMU's ever popular Family Day. The noon to 4 p.m. event offers about 100 fun, learning activities. Call 487-1333. And save your money for the Silent Auction, 11 a.m. to 2 p.m., Oct. 4, in McKenny Union Ballroom. More than 200 items will be available to start your holiday shopping, with proceeds going to scholarships for out-of-classroom experiences.



## Cont. Ed. reorganization tops summer news

While summer usually means a slower pace for most faculty, staff and students, the news didn't seem to notice the break. Here are the top news stories of the summer, just to bring everyone up to speed.

Perhaps the biggest news of the spring and summer was the May 20 announcement of the reorganization of Continuing Education.

"The reorganization fully supports the mission of Extended Programs and will allow us to expand the geographic reach of credit and non-credit programs, develop and use new instructional technologies, provide students with innovative learning opportunities and build new partnerships with EMU faculty and administration," said Continuing Education Interim Dean Dennis Beagen.

As part of the reorganization, Continuing Education was separated into two branches, credit and non-credit.

Administration changes within Continuing Education include: Donna Santo, director of outreach and external programs, is now the assistant dean of credit programs and operations; Walter DiMantova, director of Centers for Corporate Training, is assistant dean (one-half time) of non-credit programs and technical services; Carole Booms, marketing and operations; and Kim Elliot, coordinator of

credit and non-credit programs, is director of credit programs.

Another important news item from Continuing Education was the July 15 announcement that it would extend its credit programming by re-assigning the resources of Depot Town Center. The center closed June 30 and the Elderwise program is now in EMU's gerontology program in the College of Health and Human Services.

Other important news included:

- The May 20 appointment of Joseph Antonini to the Board of Regents. Antonini, the former head of K mart, replaced Mara Letica. His term expires Dec. 31, 1998.

- June, President Shelton announced a University-wide initiative for employee performance development. All EMU supervisors will maintain regular communication with their employees regarding job performance and skill development. Supervisors are to complete written evaluations of agreed-upon goals annually. They will discuss progress toward goals with the employee during the year.

- In July, EMU celebrated the

success of its first comprehensive fund-raising campaign. The Campaign For Scholars raised a record \$17.4 million, topping its base goal by \$5.4 million in just two years.

- At the end of July, President Shelton announced the institutional goals for the 1997-98 academic year. They are:

Enrollment-To maintain an enrollment of 24,500 students and generate 540,000 student credit hours.

Barriers to Learning-To organize and structure University programs, services and activities to minimize and remove, where possible, barriers to student learning.

University Image-To create a positive institutional image with internal and external University constituencies (people and organizations).

Communication-To create communication channels and processes within the University that support an informed body; promote responsible sharing of information; and enhance understanding of the University environment.

- Also in July, the 350 members of the International Union, United Automobile, Aerospace and Agricultural Implement Workers of America, Local 1975, approved a new three-year contract with a three percent pay increase.

-Compiled by Kate Bullach



Antonini

## CAMPUS CAPSULES

### World Wide Web class

EMU will offer a new World Wide Web course this fall. The course, "Issues of Historic Preservation," begins Monday, Sept. 8, and is available for undergraduate and graduate credit. The course can also be audited by those who do not wish to receive academic credit. Call 487-0407.

### Hangers on

Fall hangtags are available at the Parking Office until Sept. 9. Office hours are 8 a.m.-4:30 p.m., Monday, Thursday and Friday; and 8 a.m.-7 p.m., Tuesday and Wednesday. To order, call 487-6560.

### Total recall

The Health and Safety Office has been notified of a recall of rotors for Compac and Force Series microcentrifuges. The microcentrifuges could fail for a number of reasons. If you have these microcentrifuges, call 487-0794 for instructions and replacement.

### Time for a change

The library resumes its fall schedule, 7:45 a.m.-midnight, starting today. Call 487-3316.

### McKenny Union hours

The fall semester hours will be Monday-Thursday, 7 a.m.-11 p.m.; Friday, 7 a.m.-12 a.m.; Saturday, 8 a.m.-12 a.m.; and Sunday, 11 a.m.-11 p.m. Call 487-4108.

### Waiver deadline

The deadline for submission of Tuition Waiver applications for the Fall 1997 semester for employees and spouse/dependents is Friday, Sept. 19. The applications are available in the Benefits Office, 317 King Hall. A completed application must be turned in to the Benefits Office before the deadline. Call 487-3195.

### The write stuff

Advisers and instructors of international graduate students: ESLN 512 is designed to improve international students' academic writing ability for research papers, project papers, critical reviews, essays and comprehensive exam writing skills. Call Betsy Morgan 487-0338.

### COB Career Conference

Career services, the College of Business and ANR Pipeline will sponsor the Seventh Annual College of Business Career Conference Wednesday, Sept. 17, from 8 a.m.-4 p.m. Area employers, along with faculty and staff, will present workshops and various job search strategies. All business students are welcome. Keynote speakers are James Pawlak, syndicated columnist for the *Detroit Free Press* and Richard Robinson, entrepreneur and motivational speaker. Call 487-4099.

### School supplies

The University has awarded the office product contract to Office Depot. The contract goes into effect Sept. 15. There will be informational meetings Monday, Sept. 8 (10-11:30 a.m. and 1-2 p.m.), Wednesday, Sept. 10 (9-10:30 a.m. and 2:30-4 p.m.) and Friday, Sept. 12 (10-11:30 a.m.). Call Rick Paffenroth at 487-1024 to make reservations.

### Take a walk

The entire EMU community is invited to join in the Juvenile Diabetes Foundation 10K Walk to Cure Diabetes Sunday, Sept. 21, at Gallup Park. Call 487-2420. Registration deadline is Monday, Sept. 15.

### Plant sale at McKenny

McKenny Union will host a plant sale through Sept. 5 in conjunction with the Botany Department. The sale will be in McKenny mall from 9 a.m.-7 p.m. Call 487-4108.

### Paging all bookworms

The Ann Arbor Branch of the American Association of University Women is having its 45th annual booksale Friday, Sept. 12-Sunday, Sept. 14, at Concordia College, 4090 Geddes Road. Proceeds from the sale will be used to fund undergraduate scholarships for women at area universities and for graduate fellowships and grants awarded by AAUW's national education foundation.

*If you have an item of interest to the faculty and staff of Eastern Michigan University, please send it to Focus EMU, 18 Welch Hall, or call 487-4400.*

## CAMPUS, from page 1

goal is to expose as many people on campus to the cultural and aesthetic experience," said Ginotti.

The Performing Arts and Concert Series schedule includes a wide variety of entertainment, from bluegrass and country music, to salsa, ballet and Broadway show tunes.

The theme of this year's Performing Arts and Concert Series is "Step into the Circle."

Ginotti said the theme has two meanings. Stepping into the circle can mean stepping into the spotlight. Ginotti said Campus Life Programs was also trying to capture the overall experience of the audience's special relationship with live performers.

"It's kind of an intangible feeling that you get at a live performance," she said.

"We're inviting them to become part of the experience," she said.

For ticket information, call Campus Life Programs at 487-3045 or the EMU Box Office, beginning Sept. 8, at 487-1221.

## SPECTRUM LECTURE SERIES

**Bertice Berry**, syndicated talk show host and inspirational speaker, **Sept. 15, 7 p.m.**, McKenny Ballroom

**Delores Huerta**, co-founder, United Farm Workers of America, **Sept. 30, 7 p.m.**, McKenny Ballroom

**William B. Davis with John Mack and Gentry Lee**, UFO Debate, **Oct. 21, 7 p.m.**, Pease Aud.

**Benjamin Carson, M.D.**, Gifted Hands (MLK Day Keynote), **Jan. 19, 3 p.m.**, Pease Auditorium

**Carol Gilligan**, In A Different Voice: 16 Years Later, **March 5, 7:30 p.m.**, Pease Auditorium

**John Waters**, An Evening with Film Director John Waters, **April 13, 7 p.m.**, Pease Auditorium



**THE CANCER MAN COMETH: William B. Davis, who portrays the cigarette smoking man on the "X files," will host a lecture on UFOs Oct. 21.**

## PERFORMING ARTS/ CONCERT SERIES

**Stellar Brass**, U.S. Air Force Academy, **Sept. 12, 8 p.m.**, Pease Auditorium

**The Drifters, The Coasters & The Platters**, music concert, **Oct. 3, 8 p.m.**, Pease Auditorium

**Alison Krauss and Union Station**, bluegrass and country music, **Oct. 11, 8 p.m.**, Pease Auditorium

**Chenille Sisters Kids Show**, entertainment for children, **Oct. 12, 4 p.m.**, Pease Auditorium

**Broadway & Beyond: J. Mark McVey**, showtunes, **Oct. 17, 8 p.m.**, Pease Auditorium

**Y La Orquesta Tradicion Latina**, hot salsa big band, **Oct. 25, 8 p.m.** Pease Auditorium

**River North Dance Company**, jazz dance, **Feb. 14, 8 p.m.** Pease Auditorium

**Alvin Ailey Repertory Dance Company**, **March 7, 8 p.m.**, Pease Auditorium

## EASTERN EXCURSIONS

Detroit Tigers vs. New York Yankees, Sept. 28,

Stratford Festival, Nov. 8-9, Stratford, Ontario

Holiday Shopping Trip, Nov. 22, Birch Run

African American History Tour, Jan. 24, Detroit.



# Despite larger MAC, Eagles ready to shine

By Ward Mullens

The EMU football team may not believe in astrology, but if they did, they would know that their stars seem to be lining up for something big in the 1997-98 season.

Consider this:

**First star** - EMU quarterback Charlie Batch is granted a sixth season of eligibility by the NCAA after he was injured in the second game of the 1996 season. The last time Batch played a full season for coach Rick Rasnick he personally rewrote the EMU record books by breaking 12 EMU offensive marks, including: completions (244), attempts (421), passing yards (3,177) and touchdown passes (21).

**Second star** - The Mid American Conference has adopted a new format this season. The MAC has added two new teams to the conference and divided it into two divisions. The winner of each division will meet in the MAC Championship, Dec. 5, at Marshall College in Huntington, W. Va. The MAC Champion then goes on to the newly created Motor City Bowl, Dec. 26 in Pontiac.

Eastern Michigan will compete in the West Division with Ball State, Central Michigan, Northern Illinois, Toledo and Western Michigan. The East Division will be comprised of Akron, Bowling Green, Kent, Marshall, Miami and Ohio.

Each team will play its divisional opponents and three opposite division MAC teams.

The advantage for EMU, and every one else in the MAC, is that now a team

## EMU FOOTBALL SCHEDULE

Sept. 6.....at Missouri.....	6:30 p.m.
Sept. 13.....at Toledo.....	7 p.m.
Sept. 20.....KENT.....	6 p.m.
Sept. 27.....at CMU.....	3:30 p.m.
Oct. 4.....OHIO (Homecoming/Family Day).....	6 p.m.
Oct. 11.....BALL STATE.....	6 p.m.
Oct. 18.....AKRON.....	6 p.m.
Oct. 25.....at Marshall.....	7 p.m.
Nov. 1.....WESTERN MICHIGAN.....	1 p.m.
Nov. 8.....at Northern Illinois.....	1:05 p.m.
Nov. 15.....at Central Florida.....	4 p.m.



For ticket information, call 313-487-2282

only needs to be better than five teams in a division, not 10 teams in the conference. If EMU can stay competitive in the East Division, the Eagles could find themselves in Huntington Dec. 5

**Third star** - Depth of roster. Rasnick, whose two-year record at EMU is 9-13, will have 48 letterwinners back on the team and all are eligible to play. Batch holds the key on offense, while linebackers Avery Brown, Jerome Brooks and Clifton Robinson are the keys to the Eagle defense.

**Fourth star** - The buzz. The buzz is what everyone else is saying about the EMU football team and the buzz is good. At least one local sportswriter has picked EMU to be in Pontiac in December!

**ATHLETIC SHORTS:** There were several coaching changes during the summer. Todd Lickliter replaced Bryan Miller as an assistant basketball coach.

Debbie Norman is the new women's assistant basketball coach. She takes over for Dana Joubert. Brian Letscher is the new tight ends coach for the EMU football team and Jake Boss will be the new assistant baseball coach for the Eagles.

**OPENING DAY:** Here are the home openers for each of the winter sports: men's basketball, Nov. 11 (exhibition); women's basketball, Nov. 7 (exhibition against the Ohio All Stars); men's swimming, Nov. 16 (Ball State); women's swimming, Nov. 16 (Ball State); wrestling, Dec. 4 (Northern Illinois); women's indoor track, Jan. 10 (EMU Open); men's indoor track, Jan. 10 (EMU Open); women's gymnastics, Jan. 4 (Green & White Meet); men's winter tennis, Jan. 31 (Ill.-Chicago) and women's winter tennis, Jan. 30 (N. Illinois).

## RESEARCH

www.emich.edu/public/ord

### It was a very good fiscal year

The Office of Research Development, known also by its acronym ORD, proudly congratulates faculty and staff for securing \$11,709,607 in grants and contracts during the academic year 1996-97. The highest amount on record for such activity at our institution, this figure represents an increase of \$1,607,964 over the previous year.

ORD is dedicated to enhancing learning, research and service for the Eastern Michigan community. The office provides a wide range of services to help staff and faculty develop proposals and secure external support for their projects. Grant writing workshops are offered regularly on such important aspects of grant getting as identifying appropriate external funders, making best use of internal funds, writing and polishing the proposal and developing the budget. These workshops and other significant events and opportunities are announced each month in the ORD calendar. ORD Starwatch, featuring recent faculty and staff externally funded projects, appears quarterly.

ORD staff provide expert assistance with budget preparation, funding guidelines and forms and agency, University and governmental policies and compliance regulations. A professional writer offers proposal-writing and editing help.

Easy access to the ORD home page affords staff and faculty a direct line to the latest in funding opportunities. ORD's new SPIN/SMARTS service brings specific funding opportunities to individual faculty and staff. Each account is customized to locate specific funding opportunities to match each researcher's interests and needs.

ORD is committed to providing service of the highest quality to the entire University community. EMU faculty and staff have proven themselves to be highly competitive. EMU's record of success establishes us in the grant-getting big leagues.

Do you have an idea for a proposal? Call ORD at 487-309Q or visit our website <http://www.emich.edu/public/ord>. We're ready and eager to help you with every step you take along the funding path!

## EASTERN MICHIGAN UNIVERSITY

*The Learning Edge*

FOCUS EMU is published weekly from September to April and biweekly from May to August for Eastern Michigan University faculty and staff. The deadline to submit copy for consideration is 5 p.m. Tuesdays for the following week's issue. Please send all submissions to: Editor, Focus EMU, Office of Public Information, 18 Welch Hall. Please direct any questions to (313) 487-4400. Submissions may be faxed to (313) 483-2077.

### Office of Public Information

Pamela Young, director  
Pat Mroczek, manager of news services,  
Ward Mullens, Focus EMU editor  
Dick Schwarze, university photographer  
Linda Rider, editorial services  
Sherry Miller, senior secretary  
Monica Wroblewski, graduate assistant  
Kate Bullach, student intern  
Stephen Boyce, photographer  
Kelli Horne, student writer

Printed on recycled paper by the Tecumseh Herald, Tecumseh, Mich.

## HAPPY HOLIDAYS

Whether you are planning your next vacation or just need help remembering when the next three-day weekend is, this list of official University holidays can help. Clip and save!

**Thanksgiving Break**  
Thursday, Nov. 27 and  
Friday, Nov. 28

**Christmas Break**  
Wednesday, Dec. 24 and  
Thursday, Dec. 25

**Seasonal Days and Designated Days**  
Friday, Dec. 26  
Monday, Dec. 29  
Tuesday, Dec. 30

**New Year's Day**  
Wednesday, Dec. 31  
Thursday, Jan. 1

## OPENINGS [www.emich.edu/public/hr/employ.htm](http://www.emich.edu/public/hr/employ.htm)

To be considered for vacant positions, all Promotional Openings Application Forms MUST BE SUBMITTED directly to the Compensation/Employment Services Office and received no later than 4:45 p.m., Tuesday, Sept. 9. NOTE: LATE OR INCOMPLETE FORMS WILL NOT BE ACCEPTED.

Vacancy information may also be obtained by calling our 24-hour Jobs Line at 487-0016.

**REGIONAL DEVELOPMENT (ICARD).** Note: Some flexibility in schedule to meet department's training program needs may be required.  
CSEN9801 CS-05 \$838.86 Senior Secretary, Financial Aid.  
CSBF9805 CS-06 \$914.84 Account Specialist, Senior Student Accounting. Note: Schedule requires working Tuesday and Wednesday until 7 p.m. once a month.

**PROFESSIONAL/TECHNICAL** (Minimum Bi-Weekly Salary)

PTSA9806 PT-05 \$779.37 Custodial Foreperson, Housing (Cust. Prorate). Hours: Tuesday through Saturday, 6:30 a.m. to 3 p.m.  
CSUR9801 CS-05 \$838.86 Senior Secretary, Institute for Community and

**ADMINISTRATIVE/PROFESSIONAL** (Min Semi-Weekly Salary)  
APUR9802 AP-11 \$1825.71 Director, Alumni Relations, University Relations.

**FACULTY**  
F9815 Assistant Professor, Physical/Analytical Chemistry, Chemistry Department. Academic Year.  
F9816 Assistant Professor, Physical/Analytical Chemistry, Chemistry Department. Academic Year.

F9821 Assistant Professor, Computer Science. Academic Year.

F9817 Assistant Professor, Emotional Impairment, Special Education. Academic Year.

F9818 Assistant Professor, Speech Language Pathology, Special Education. Academic Year.

F9819 Assistant Professor, Earth Science/Geography Teacher Education, Geography and Geology. Academic Year.

F9820 Assistant Professor, Criminology, (Sociology, Anthropology and Criminology). Academic Year.

F9822 Assistant Professor, Occupational Therapy, Associate Health Professions. Academic Year.

The pay rates stated above reflect the probationary minimum rate for a newly hired EMU employee.

EASTERN MICHIGAN UNIVERSITY  
*The Learning Edge*

An Affirmative Action/Equal Opportunity Employer

## Get Published!

If you are a member of the EMU faculty and staff and have a recent accomplishment you would like mentioned in FOCUS EMU, we would like to hear from you.

Send information to Public Information, 18 Welch Hall.

EMU  
Newsline:  
Call 487-  
2460

Look for EMU TODAY on the EMU Web site: [www.emich.edu](http://www.emich.edu)