

Lehigh Valley Health Network LVHN Scholarly Works

USF-LVHN SELECT

LVHN Reflux Treatment Program: A Pilot Study Evaluating the value of two novel procedural techniques in treating GERD vs standard medical therapy. A multidisciplinary approach

Karim Hussein MSIV

USF MCOM- LVHN Campus, Karim.Hussein@lvhn.org

Follow this and additional works at: <https://scholarlyworks.lvhn.org/select-program>

Part of the [Medical Education Commons](#)

Published In/Presented At

Hussein, K. (2019, March). *LVHN Reflux Treatment Program: A Pilot Study Evaluating the value of two novel procedural techniques in treating GERD vs standard medical therapy. A multidisciplinary approach*. Poster Presented at: 2019 SELECT Capstone Posters and Presentations Day. Kasych Family Pavilion, Lehigh Valley Health Network, Allentown, PA.

This Poster is brought to you for free and open access by LVHN Scholarly Works. It has been accepted for inclusion in LVHN Scholarly Works by an authorized administrator. For more information, please contact LibraryServices@lvhn.org.

LVHN Reflux Treatment Program: A Pilot Study

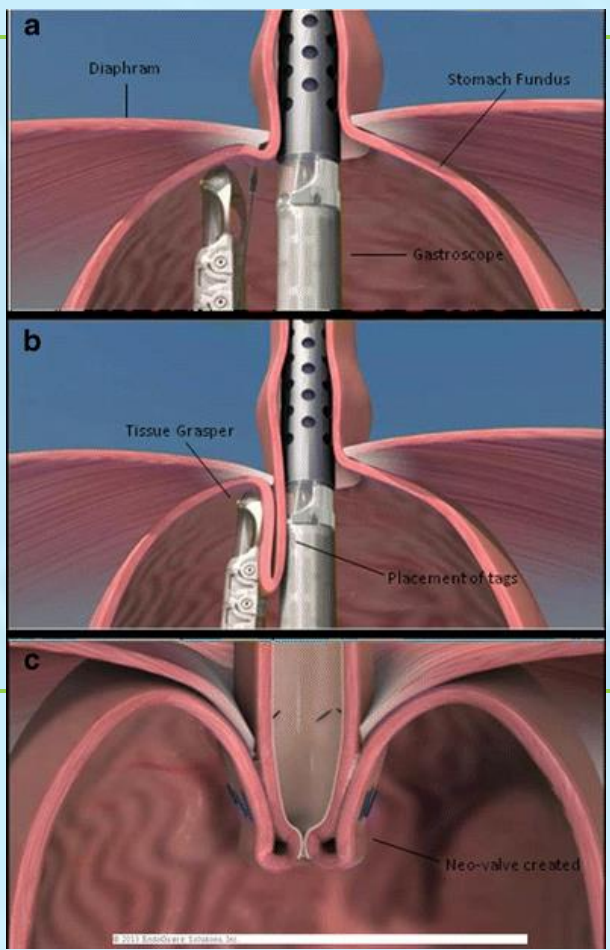
Evaluating the value of two novel procedural techniques in treating GERD vs standard medical therapy. A multidisciplinary approach

Karim Hussein, MSIV under the mentorship of Dr. Scott Beman, MD

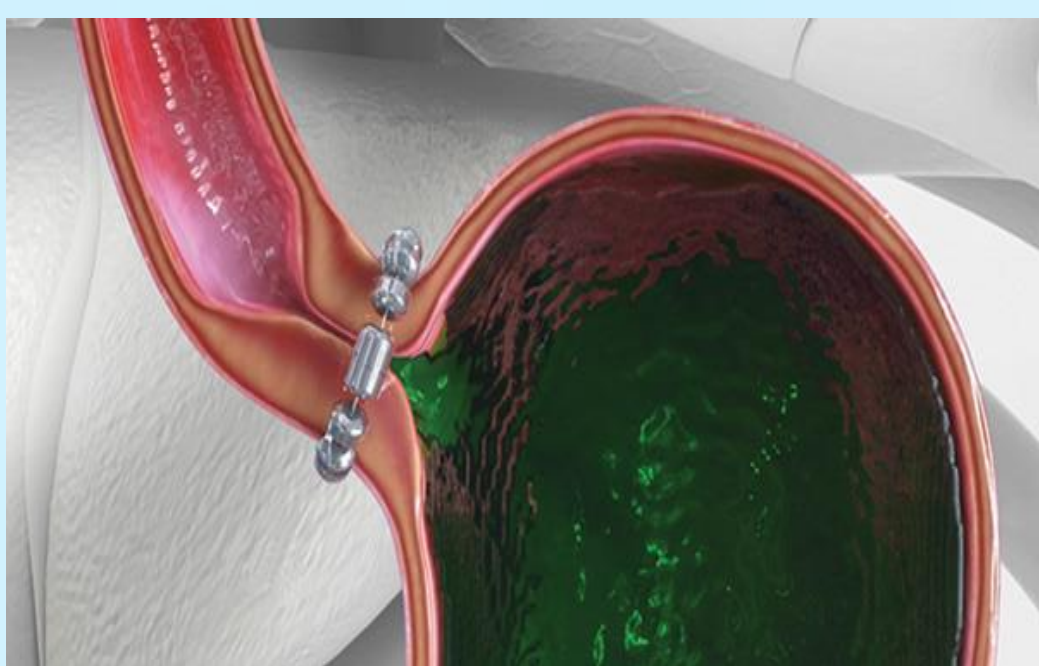
Lehigh Valley Health Network, Allentown, Pennsylvania

Background

- Normal swallowing involves passage of food from mouth through esophagus to stomach
- GERD is symptomatic regurgitation from stomach to esophagus
- Prevalence of 19.8% in the US¹
- Treatment w/ PPI is mainstay of medical therapy
- Nissen Fundoplication is the “gold standard” for surgical intervention
- **Transoral Incisionless Fundoplication**
- Utilizes Esophyx device to suture fundus of stomach to distal esophagus
- FDA approved in 2009
- Meta-analysis demonstrated a cessation of PPI use in 89% of patients in 5 year follow-up²



- **LINX magnetic core band**
- Titanium beads wrapped around the LES
- FDA Approved in 2012
- Significant reduction in PPI use and increased QoL at 5-year follow-up³

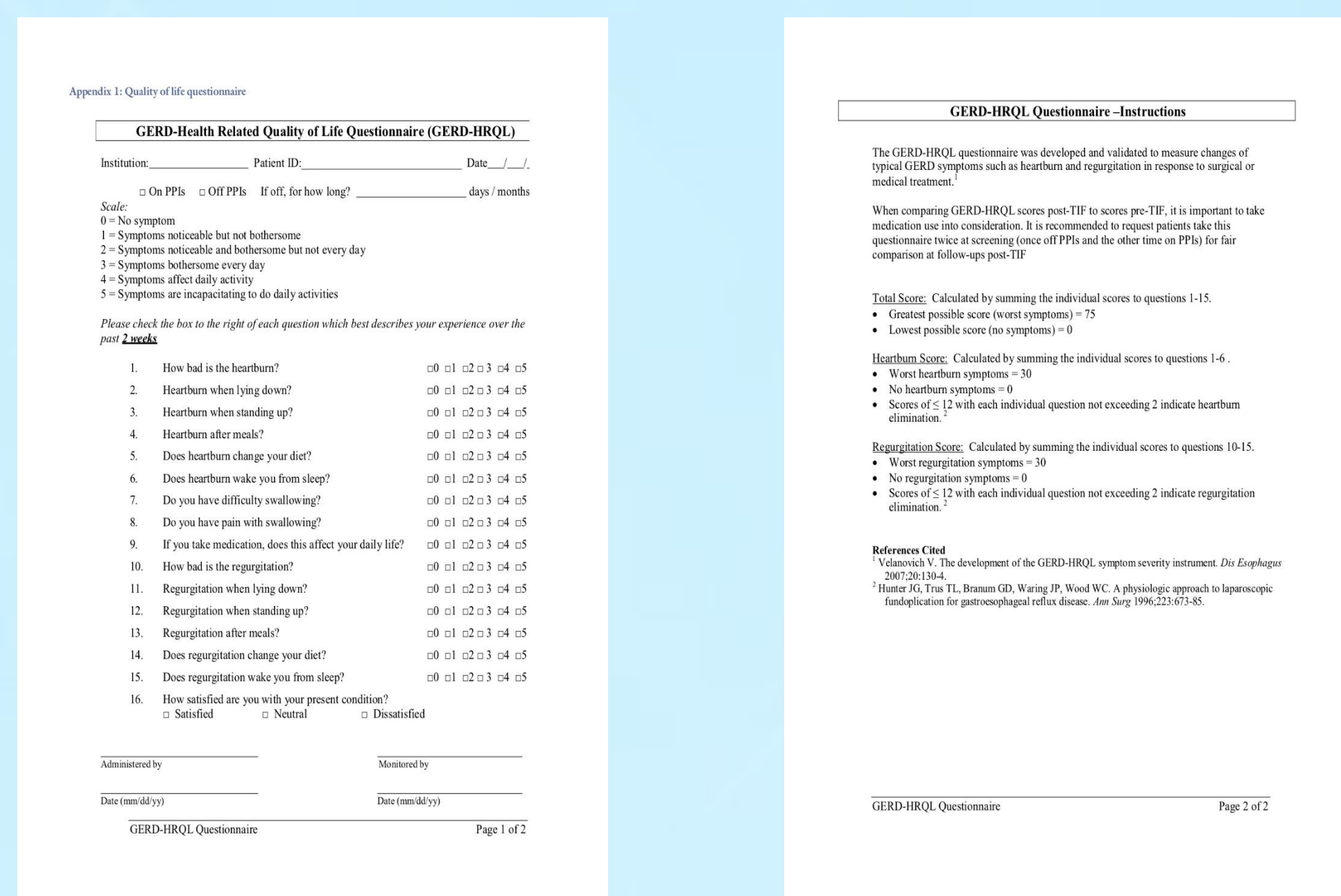


Problem Statement

Pilot project assessing the TIF and LINX procedures' effect on patient QoL at 6-month follow-up using the GERD-HRQL

Methods

- Prospective study of participants > 18yo w/ GERD and PPI use > 1 month
- Symptoms occurring \geq 2-3 days/week w/ no to minimal improvement on PPI
- No hx of Barrett's esophagus, esophageal stricture, systemic sclerosis, esophageal adenocarcinoma
- Patients undergo PPI trial, EGD, pH monitoring, and esophageal manometry
- Patients' QoL is assessed via GERD-HRQL
- Undergo either TIF or LINX after discussion with care team
- Stop PPI use 2 weeks post-op
- Reassess w/ GERD-HRQL at 6-month follow-up



GERD-HRQL⁴

Results

	Procedure	GERD-HRQL initial total score	GERD-HRQL total score 6-month follow-up
Patient 1	TIF	24	0
Patient 2	TIF	32	0
Patient 3	LINX	30	0
Average		28.67	0

Discussion

- Patient GERD-HRQL average score at initial encounter of ~29
- Decreased significantly to 0 at 6-month follow-up
- Limited patient pool but positive results in patient symptoms without PPI use at 6 months
- Can reduce patient medication burden and increase QoL
- Values Based Patient Centered Care
- Multidisciplinary team approach to care

Conclusions

- Gastroesophageal reflux is a widely prevalent disease
- Long-term PPI use has adverse effects on patient
- TIF and LINX procedures provide
 - Improved GERD related QoL
 - Decreased medication burden on patient

REFERENCES

1. El-Serag HB, Sweet S, Winchester CC, Dent J. Update on the epidemiology of gastroesophageal reflux disease: a systematic review. *Gut*. 2014;63(6):871-80
2. Mccarty, T., Itidiare, M., Njei, B., & Rustagi, T. (2018). Efficacy of transoral incisionless fundoplication for refractory gastroesophageal reflux disease: A systematic review and meta-analysis. *Endoscopy*,50(07), 708-725. doi:10.1055/a-0576-6589
3. Ganz, R. A., Edmundowicz, S. A., Taiganides, P. A., Lipham, J. C., & Dunn, D. (2016). Long-term Outcomes of Patients Receiving a Magnetic Sphincter Augmentation Device for Gastroesophageal Reflux. *Clinical Gastroenterology and Hepatology*,14(5), 671-677. doi:10.1016/j.cgh.2015.05.028
4. Velanovich, V. (2007). The development of the GERD-HRQL symptom severity instrument. *Diseases of the Esophagus*,20(2), 130-134. doi:10.1111/j.1442-2050.2007.00658.x

© 2018 Lehigh Valley Health Network