

Community Cancer Services, Clinical Trials, and Quality Initiatives—Year 1 NCCCP at Lehigh Valley Health Network

Gregory R. Harper MD, PhD
Lehigh Valley Health Network, Gregory.Harper@lvhn.org

Ada M. Rivera BA
Lehigh Valley Health Network, Ada.Rivera@lvhn.org


Eliot L. Friedman MD
Lehigh Valley Health Network, Eliot_L.Friedman@lvhn.org

Kathleen A. Leies RN, OCN
Lehigh Valley Health Network, Kathleen_A.Leies@lvhn.org

Nadesda Mack RN, BSN, MBA, OCN
Lehigh Valley Health Network, Nadesda.Mack@lvhn.org

See next page for additional authors

Follow this and additional works at: <http://scholarlyworks.lvhn.org/medicine>

 Part of the [Clinical Epidemiology Commons](#), [Community Health and Preventive Medicine Commons](#), [Health and Medical Administration Commons](#), [Medical Genetics Commons](#), and the [Oncology Commons](#)

Published In/Presented At

Harper, G., Rivera, A., Friedman, E., Leies, K., Mack, N., McGonigle, L., Nair, S., Namey, T., Salas-Lopez, D., & Swinfard, R. (2011, May). *Community cancer services, clinical trials, and quality initiatives- year 1 ncccp at lehigh valley health network*. Poster presented at: The 2011 Annual Meeting, Falls Church, VA.

This Poster is brought to you for free and open access by LVHN Scholarly Works. It has been accepted for inclusion in LVHN Scholarly Works by an authorized administrator. For more information, please contact LibraryServices@lvhn.org.

Authors

Gregory R. Harper MD, PhD; Ada M. Rivera BA; Eliot L. Friedman MD; Kathleen A. Leies RN, OCN;
Nadesda Mack RN, BSN, MBA, OCN; Lenore McGonigle Med; Suresh G. Nair MD; Tara Namey MS, CGC;
Debbie Salas-Lopez MD, MPH, FACP; and Ronald W. Swinfard MD, FACP

Community Cancer Services, Clinical Trials, and Quality Initiatives— Year 1 NCCCP at Lehigh Valley Health Network

Gregory R. Harper, MD, PhD, Ada M. Rivera, BA, Eliot L. Friedman, MD, Kathleen A. Leies, RN, OCN, Nadesda Mack, RN, BSN, MBA, OCN, Lenore McGonigle, MEd, Suresh G. Nair, MD, Tara Namey, MS, CGC, Debbie Salas-Lopez, MD, MPH, FACP, and Ronald W. Swinfard, MD, FACP, Lehigh Valley Health Network, Allentown, Pennsylvania

Community Cancer Services

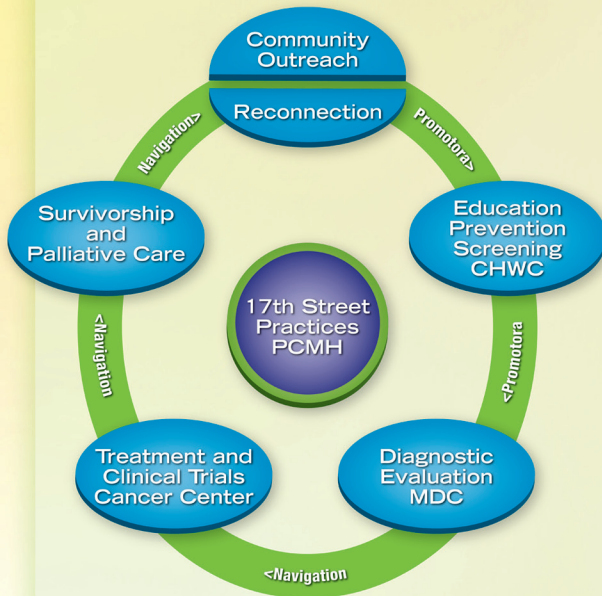
Outreach: Promotoras identify patients due for screening and in need of primary care.

Community Health and Wellness Center (CHWC):

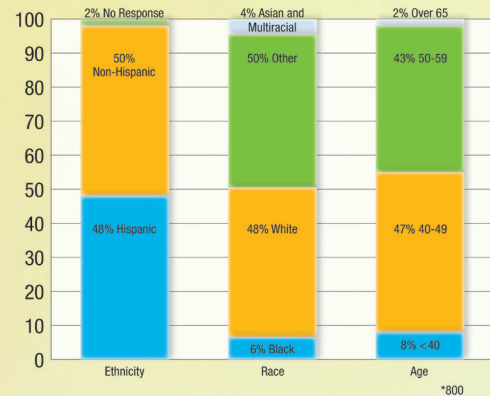
- Education—Promotoras educate patients on the importance of cancer screening and prevention.
- Screening—Free screenings for patients referred by Promotoras
- Prevention Trials—screen for enrollment in Smoking Cessation, Colon Polyp trials

Multidisciplinary Care (MDC): Telemedicine at the CHWC facilitates patient access to other members of multidisciplinary team.

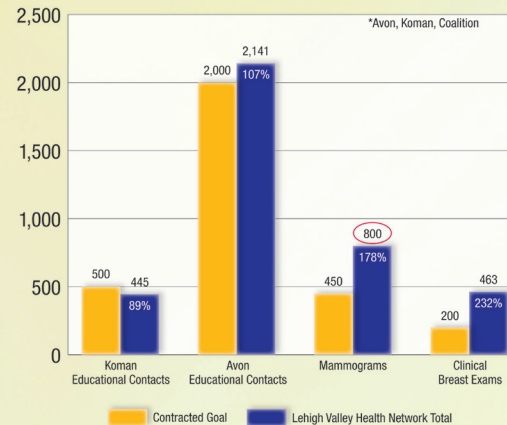
Navigation (Patient Centered Medical Home, PCMH): Coordination of care across the continuum for patients receiving cancer treatment, ensuring re-connection to primary care (patient centered medical homes).



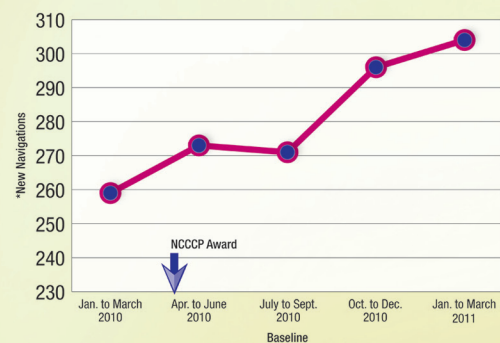
Underserved Mammograms* (2010)



Underserved Outreach* Outcomes (2010)



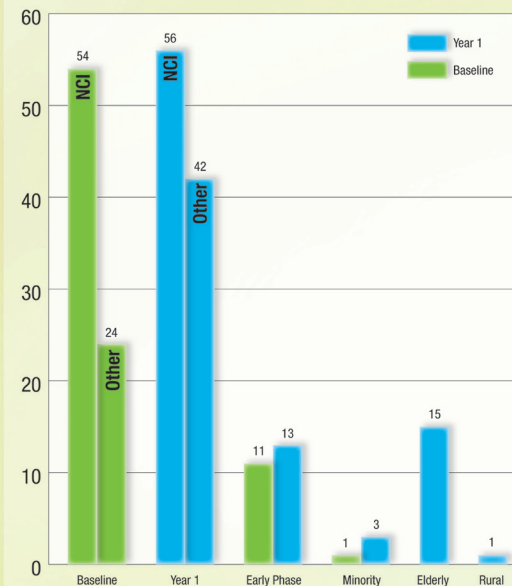
Women Navigated* with Abnormal Mammogram (BIRADS 4 & 5) from BHS



Clinical Trials Accrual Summary

- Total LVHN Accrual
 - Baseline 78; Year 1 NCCCP 98 (26% increase)
- NCI Trial Accrual
 - Baseline 54; Year 1 NCCCP 56
- Minority Accrual to NCI trials
 - Baseline 1; Year 1 NCCCP 3
- Elderly, Rural (RUGA 4-10) tracked
- NCCCP Portfolio Trials—12 open
- Moffitt Cancer Research Network (MCRN) agreement signed

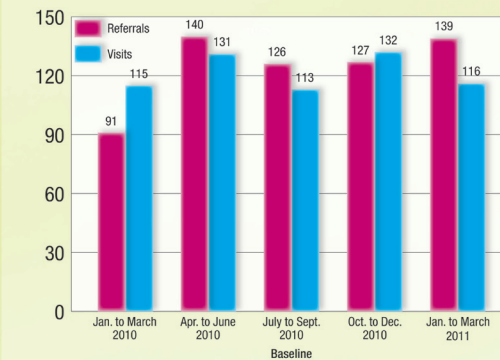
LVHN Clinical Trials Accruals



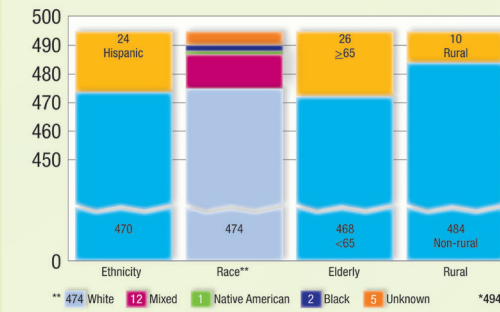
Quality Initiatives

- Cancer Risk and Genetic Assessment
 - Referrals
 - Ethnicity, race, elderly, rural tracking
 - Genetics Matrix
- Multidisciplinary Clinics (MDC)
 - MDC Privileges (“COP”)
 - Thoracic MDC

Referrals and Visits to Genetics Program



Cancer Risk and Genetic Counseling Ethnicity, Race, Elderly, Rural for Year 1*



Genetic Counseling Assessment Matrix

Assessment Area	Level 1	Level 2	Level 3	Level 4	Level 5
Patient Identification (Breast)	Achieved	Achieved	Achieved	Achieved	Achieved
Physician Referrals	Achieved	To Be Achieved	To Be Achieved	To Be Achieved	To Be Achieved
Services Provided	Achieved	To Be Achieved	To Be Achieved	To Be Achieved	To Be Achieved
Pre-Test Counseling	Achieved	Achieved	Achieved	Achieved	Achieved
Post-Test Counseling	Achieved	Achieved	Achieved	Achieved	Achieved
Documentation of Cancer Genetics Consult in Medical Record	Achieved	Achieved	Achieved	Achieved	Achieved
Financial	Achieved	Achieved	Achieved	Achieved	Achieved

MDC Privileges (Conditions of Participation)



Thoracic MDC Matrix Status—May 2011

Assessment Area	Level 1	Level 2	Level 3	Level 4	Level 5
Case Planning	Achieved	Achieved	To Be Achieved	To Be Achieved	To Be Achieved
Physician Engagement	Achieved	Achieved	To Be Achieved	To Be Achieved	To Be Achieved
Treatment Team Integration	Achieved	Achieved	To Be Achieved	To Be Achieved	To Be Achieved
Integration of Care Coordinators	Achieved	Achieved	To Be Achieved	To Be Achieved	To Be Achieved
Infrastructure	Achieved	Achieved	To Be Achieved	To Be Achieved	To Be Achieved
Financial	Achieved	Achieved	To Be Achieved	To Be Achieved	To Be Achieved
Clinical Trials	Achieved	Achieved	To Be Achieved	To Be Achieved	To Be Achieved
Quality Improvement	Achieved	Achieved	To Be Achieved	To Be Achieved	To Be Achieved
Medical Records	Achieved	Achieved	To Be Achieved	To Be Achieved	To Be Achieved

QOPI

- Qualified for certification
- Site visit being scheduled