

University of Montana

## ScholarWorks at University of Montana

---

Forestry Kaimin, 1915-2015

University of Montana Publications

---

1-1-1957

### Forestry Kaimin, 1956-1957

Forestry Student Association

Follow this and additional works at: <https://scholarworks.umt.edu/forestrykaimin>

**Let us know how access to this document benefits you.**

---

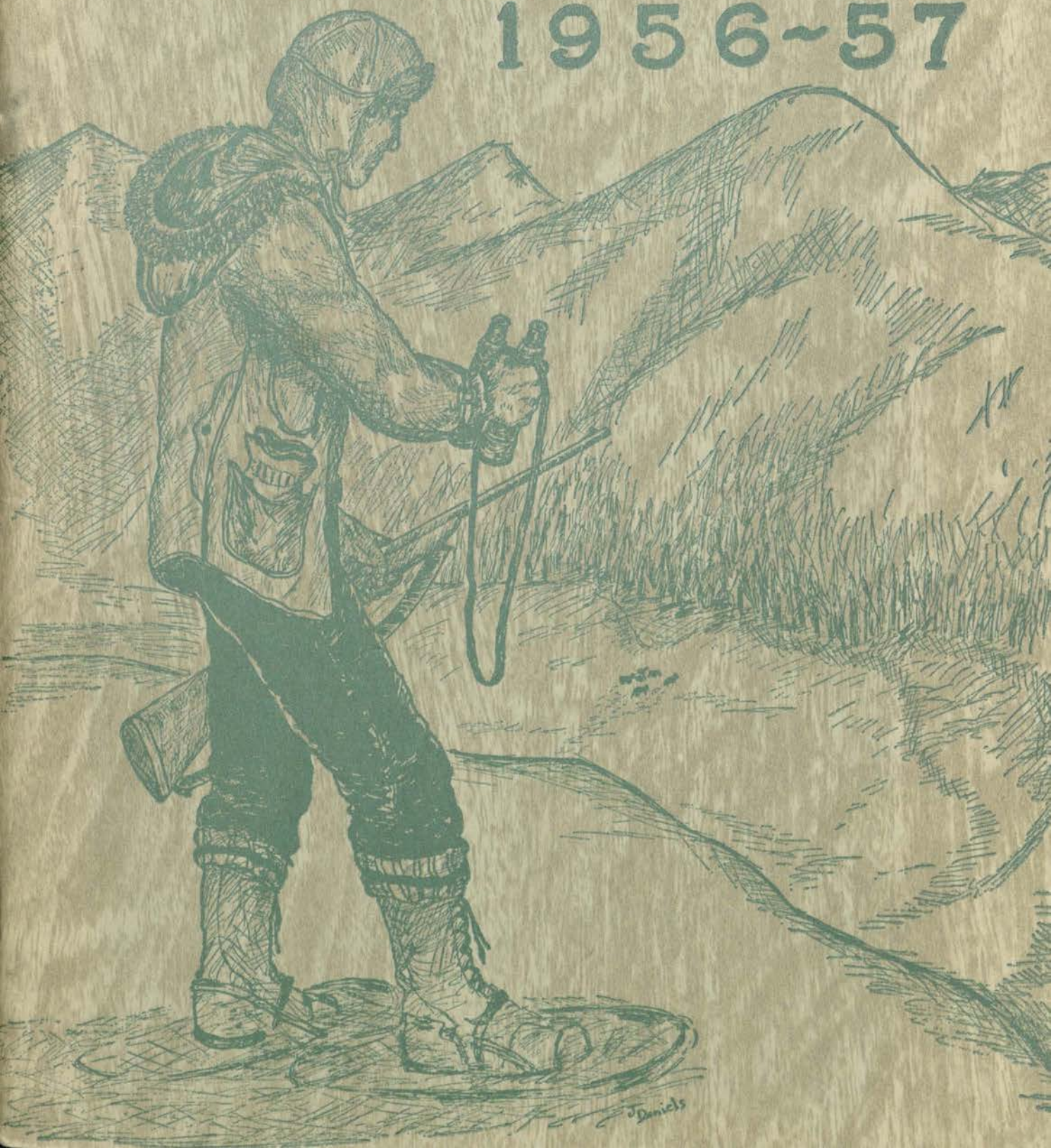
#### Recommended Citation

Forestry Student Association, "Forestry Kaimin, 1956-1957" (1957). *Forestry Kaimin, 1915-2015*. 35.  
<https://scholarworks.umt.edu/forestrykaimin/35>

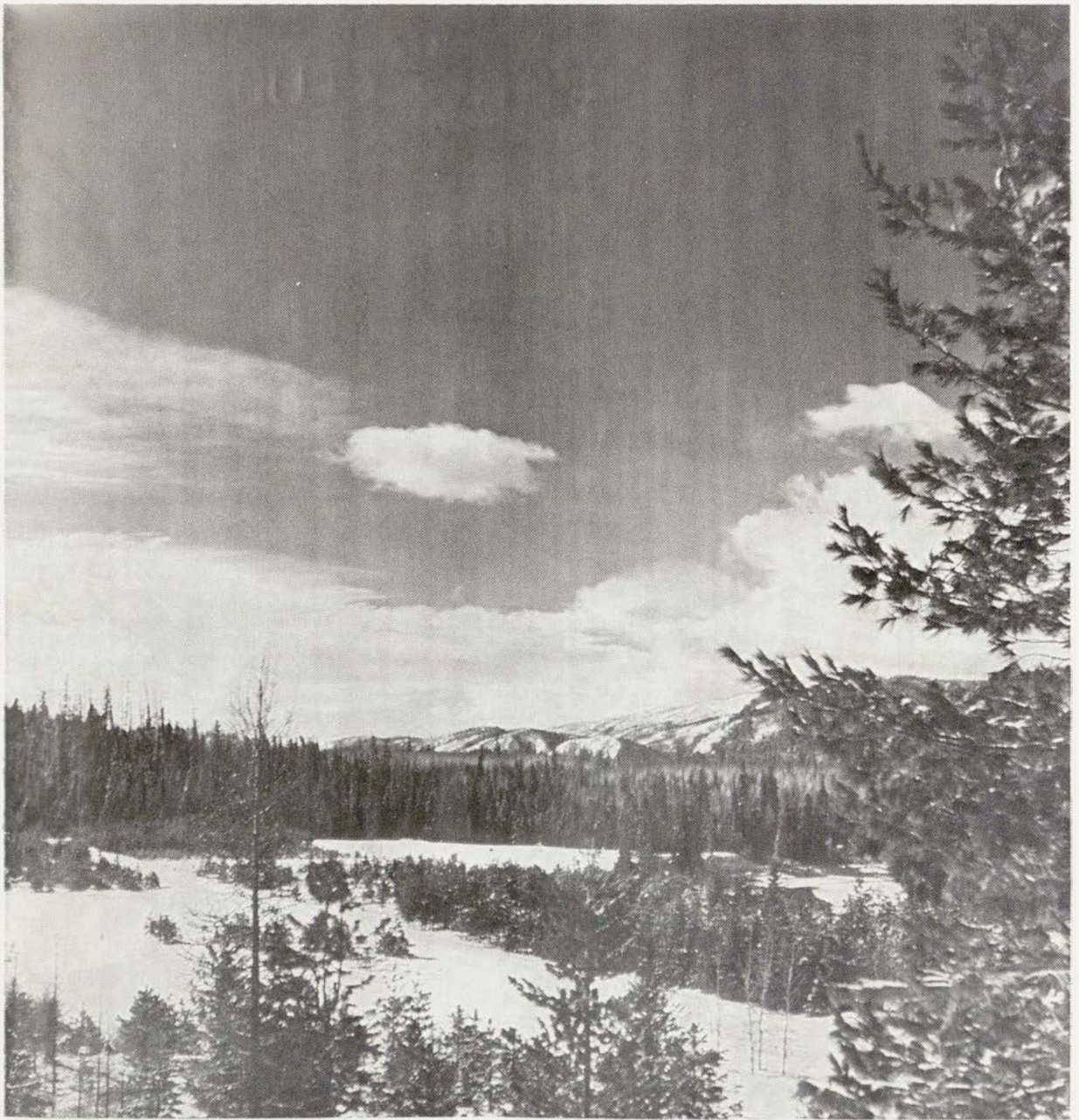
This Yearbook is brought to you for free and open access by the University of Montana Publications at ScholarWorks at University of Montana. It has been accepted for inclusion in Forestry Kaimin, 1915-2015 by an authorized administrator of ScholarWorks at University of Montana. For more information, please contact [scholarworks@mso.umt.edu](mailto:scholarworks@mso.umt.edu).

# FORESTRY KAIMIN

1956~57







## "TREES"

I think that I shall never see  
A poem lovely as a tree.  
A tree whose hungry mouth is pressed  
Against the earth's sweet flowering breast;  
A tree that looks at God all day  
And lifts her leafy arms to pray  
A tree that may in summer wear  
A nest of robins in her hair;  
Upon whose bosom snow has lain  
Who intimately lives with rain  
Poems are made by fools like me,  
But only God can make a tree.

JOYCE KILMER



# THE FORESTRY CLUB

Presents



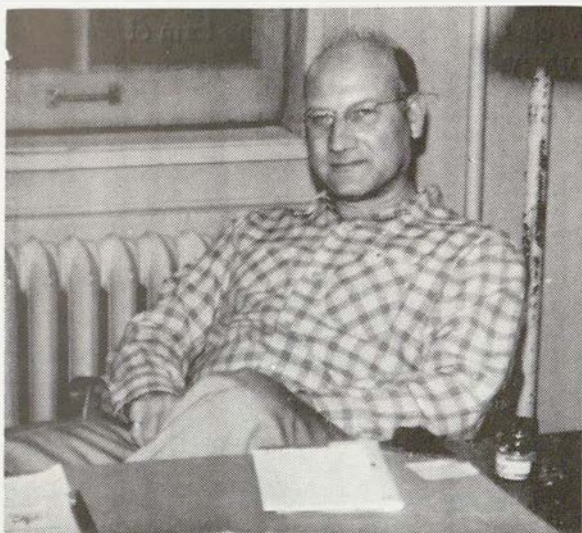
BERTHA'S DIARY

THE 1956-57 FORESTRY KAIMIN



## DEDICATION

The Forestry Kaimin staff takes great honor in dedicating this year's Kaimin to two great men in the field of Forestry. We hereby dedicate the 1956-57 Forestry Kaimin to Professor Melvin Morris and Doctor Charles Waters.



MELVIN MORRIS

"Mel" Morris came to our forestry school in 1936 from Colorado A. & M. College. He has been here since, with the exception of one year, when in 1945-46 he went to Syracuse, New York, as a special lecturer on Range Management. Unknown to many people, Mel was the instrumental character in organizing the only known elk pens in the world. These pens are now located on the old Boyd Ranch about 45 miles from Missoula. Currently Mel is program chairman of the American Society of Range Management.



CHARLES WATERS

"Doc" Waters has been closely connected with the forestry school for the past 30 years. He spent 17 years in the forestry school and now is in the botany department. In 1934-35 "Doc" worked on the blister rust control at Spokane, Washington. All through his career he has been active in scientific botany work. At the present time "Doc" is working on the Ely-Troderma blight of ponderosa pine, and dwarf mistletoe of larch and lodgepole pine.



## FORWARD

These have been two exciting years for Bertha and in the following pages you shall see and read about them. Bertha said that she wished she could still be hanging over the fireplace where once again she could supervise all of the forester's plans, but due to the circumstances beyond her control she knew it wasn't feasible. She did say however, that the "ole" club was sure tops in campus activities and that even with it's ups and downs it always proved it's worth.

The Kaimin staff takes great pride in presenting to you and for your pleasure, a review of the club's activities and events of 1956-57 as told in the form of BERTHA'S DIARY.



M.S.U. FORESTRY SCHOOL



# KAIMIN STAFF



Editor  
HARRY HOFFMAN



Photographer  
CHUCK JANDA



Business Manager  
JOE BEDNORZ



Associate Editor  
KEN KEEFFE



Advertising Manager  
DICK KABICA

## SPECIAL THANKS:

Jess Daniels, cover; Dick Behan, senior write ups; John McMahon, roster; George Knapp, Utilization Club, and to all those who donated pictures to the Kaimin, and to Mr. Claude Lord, Mr. Darrell Taylor and Dick Harris, for their guidance.

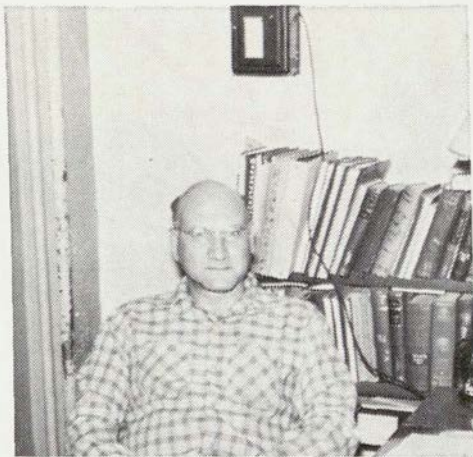
HOFF



# M.S.U FORESTRY SCHOOL FACULTY



DEAN ROSS WILLIAMS  
B.S.F., Montana State Univ. 1921  
M.F., Yale University, 1923



MELVIN MORRIS  
B.S., Colorado A. & M. College 1930  
M.S., Colorado A. & M. College 1932



JOHN KRIER  
B.S. and M.S., Univ. of Idaho 1947-48  
Ph.D., Yale University 1951



GENE COX  
B.S., M.F., Ph.D., Duke University  
1947-1948-1953



WILLIAM PIERCE  
B.S.F., Univ. of Washington 1940  
M.F., Yale University 1947





ARNOLD BOLLE

B.A., Northwestern College 1934  
B.S.F., Montana State Univ. 1937  
M.P.A., Harvard 1955



ROBERT STEELE

B.S.F., Colorado A. & M. 1942  
M.S., Univ. of Michigan 1949



O. B. HOWELL

B.S. and M.S., Michigan State Univ.  
1931-1932



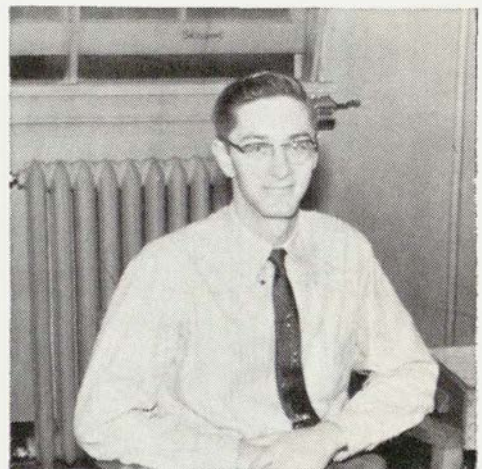
JAMES WALLIS

B.S., Univ. of New Brunswick 1950  
M.S., Oregon State 1954



FRED GERLACH

B.S., Montana State Univ. 1952



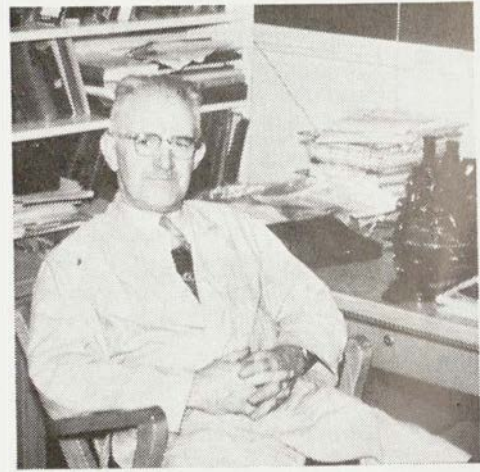
WILLIAM COVEY

B.S., Montana State Univ. 1953





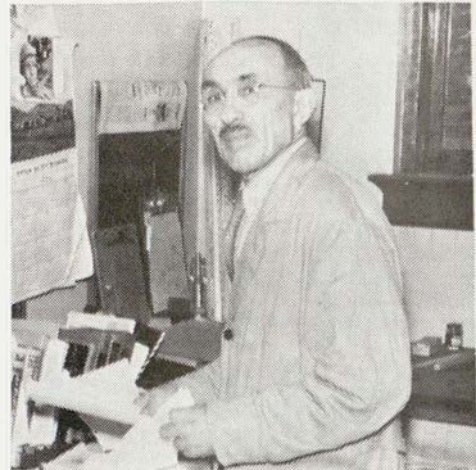
RICHARD TABER  
 A.B., Univ. of California 1942  
 M.S., Univ. of Wisconsin 1949  
 Ph.D., Univ. of California 1951



CHARLES WATERS  
 B.S. and B.L., Berea College 1919  
 M.A., Ohio State University 1921  
 Ph.D., University of Michigan 1927



REUBEN DIERTERT  
 B.A., DePauw University 1925  
 M.S., Michigan State Univ. 1927  
 Ph.D., Iowa State Univ. 1937



JOSEPH KRAMMER  
 B.S., M.A., Ph.D., Univ. of Nebraska  
 1921-1923-1936



Secretaries

ILLMA SCOTT

DORA RATZBURG

# EVENTS FROM SCHOOL YEAR 1956



ONE HIGHLIGHT OF THE SPRING TRIP



## SENIORS OF 1956



**Eugene E. Addor**

"Gene" is a forest protection major and comes to us from Ukiah, California. He attended Santa Rosa J.C. before coming here. Gene is a member of Phi Sigma Kappa and is a plant physiology lab. assistant. He has worked for the Forest Service each summer since 1945 except for a "hitch" in the army. Gene has been tank truck operator, station fireman, and this past year worked at the Inland Empire Research Center.



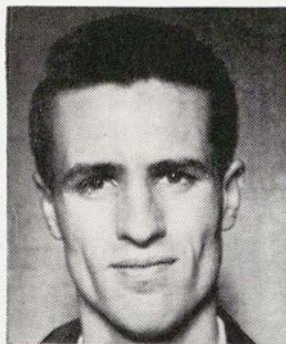
**Art Belcher**

Art is a forest management major from Missoula. He is a member of the Forestry Club and has served as senior delegate to the executive board. In 1954 and 1955, Art worked on the Lubrecht Experimental Forest.



**Elvin T. Choong**

Elvin "What's deese?" Choong comes to us all the way from Djakarta, Java, Indonesia and is a wood utilization major. He spent 1½ years at North Dakota School of Forestry before coming here. Elvin has been quite active here at M.S.U. He is a member of the Forestry Club and has worked on the Forester's Ball. He is a member of Phi Kappa Phi and the "M" Club. Besides these, he is a student assistant for the biological lab., snow survey data, and mapping. Elvin is a member of the varsity swimming team and has played on the Forestry IM swimming team. In 1953, he worked on the Nez Perce N.F. In 1954, he worked on the Flathead N.F. and in 1955, he again worked on the Nez Perce N.F.



**Peter D. Christman**

"Dale" is a wood utilization major, from Butte, Montana. He attended Stanford University before coming here. He has worked on the Avery District, St. Joe Forest, in the summers of 1948, '49, '50, and '51.



**E. Allen Crozer**

"Omar" hails from Trenton, New Jersey and is a forest engineering major. He attended Trenton J.C. before coming here. Omar has been very active here at M.S.U. In addition to being property manager for the Forestry Club, he has served as business manager for the Kaimin, Forester's Ball tree cutting chairman and advisor, and junior class representative to the Executive Board. He is also a member of the M.S.U. Ski Club, Flying Club, Budget and Finance Committee, the New Student Union Committee and the Driuds. He is a student librarian and also a member of the IM swimming, bowling, volleyball, football, and basketball teams. In 1953, he worked for the New Jersey Highway Dept. In 1954, he worked at the Kelly Creek R.S. on the Clearwater N.F. In 1955, he worked for the B.L.M. in Portland, Oregon.





**Eugene Duhamel**

Gene is a timber management major hailing from East Providence, Rhode Island. He attended the University of Rhode Island before coming here. Gene has played IM basketball, softball, and volleyball. The summer of '52 saw him working in B.R.C. on the Kaniksu N.F. in 1954, he was scaling and marking timber at Tally Lake, Montana. 1955 saw him with the B.L.M. as a student trainee in Roseburg, Oregon.



**Glenn W. Freeman, Jr.**

Glenn is a range management major from Dillon, Montana. Glenn has been photo editor for the Kaimin and is a member of Scabbard and Blade. In 1954 and 1955, he worked on the Fort Howes R.D. on the Custer N.F.



**Joanne L. Golden**

Joanne is a forest protection major from Missoula. She is very active in the Forestry Club and she has served as ticket committee chairman and art committee co-chairman for the Forester's Ball. She has also worked on the Kaimin. Joanna is a member of Delta Gamma sorority and the Student Union Art Committee. In 1953, she worked at the Savenac nursery. In 1954, she worked at the Red Ives R.S. on the St. Joe. 1955 saw her working in B.R.C. at Clarkia, Idaho.



**Harlan L. Hayes**

Harlan is a timber management major from Missoula. He is in the Forestry Club and has worked on the Forester's Ball. Harlan has also been Homecoming Float Committee Chairman and is the rifle team V.P. In 1951, he worked at the Powell R.S. In 1952 and 1953, he worked as a smokejumper. In 1954, he again worked at Powell R.S. and in 1955, he worked for the B.L.M. in Missoula.



**Dallard V. Johnson**

Another forest protection major, Dal hails from Milwaukee, Wisconsin, where he attended the Milwaukee Ext. of the Univ. of Wisconsin before coming here. Dal has been property manager for the Forestry Club and exhibition committee chairman for the Forester's Ball. He is also a member of the Druids. He has played in varsity swimming, football and track, IM swimming and track. 1953 saw him working as a lookout-fireman at Plains, Montana. In 1954, he worked on the pole blight study at the No. Rocky Mtn. Exp. Sta. in Missoula. In 1955, he was a smokejumper.





**Richard F. Johnson**

Dick is a timber management major from Chicago, Illinois. Before coming here, he attended Wright Jr. College in Chicago and he was also rum runner for the W.C.T.U. on the route from Chicago to Peoria. Dick has been quite active here. He has been sophomore delegate to the Executive Board, senior representative to the Honor Council. He is a member of the Druids and has served as a group's treasurer. He has spent considerable time working on the Forester's Ball. He worked on the sound system, tree cutting committee, gym decorations committee, co-chairman of music committee, and publicity committee. He has also worked on the Kaimin, serving as advisor and editor in 1955. Dick received the Silas R. Thompson Award in 1955. He is a very talented member of the Royaleers, serving as V.P. and publicity chairman for the group and he also belongs to the Independents and is senior member of the Elrod Hall, 3rd East Social Club. Dick has been IM manager for the club and has played IM touch football, basketball, volleyball, bowling, softball, and tennis. In March, 1956, Dick received the "Highest Award," ever given by the Foresters, for his loyal support given the team. In 1953 and 1954, he worked on the Lincoln Dist. of the Helena N.F. as a lookout and in trail crew work. In 1955, he was dispatcher on the Lincoln R.D.



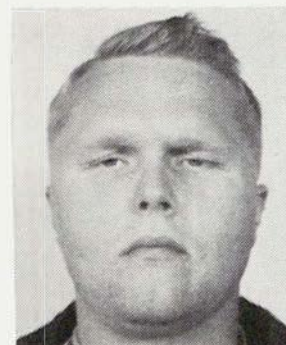
**Ralph H. Olson**

Another forest management major, Ralph is from Bigfork, Montana. He is a member of the Forestry Club, has worked on the special effects committee of the Forester's Ball, and has been an ad-chaser for the Kaimin. Ralph is the chairman for the Spaulding Memorial Fountain Committee. He is president of the Lutheran Students Association and was V.P. for the Montana region of L.S.A. in 1951-52. He was a member of the varsity swimming team. Ralph has worked for the U.S.F.S. in road location, tree scaling, and spruce beetle tree marking. Also, he has worked for the Ohio Match Co. in scaling and road location work.



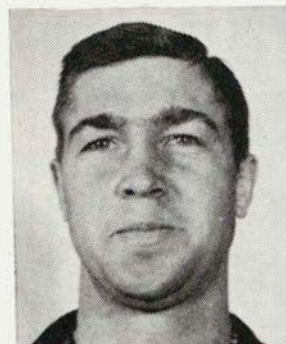
**Richard Edward Ortengren**

Dick is a forest utilization major from Marinette, Wisconsin. He attended the Univ. of Wisconsin before coming here. He is a member of the Forestry Club and has worked on the Forester's Ball. Dick is a member of the Society of American Foresters and the Forest Products Research Society. He has played IM football, basketball and softball. In 1953, Dick worked for the Scott Paper Co. in Marinette, Wisc. In 1954, he worked at the Coram R.S. in timber sales work. In 1955, he worked at the Intermountain Forest and Range Experiment Station.



**Tom Patterson**

Tom "Boss Man" Patterson is a timber management major from Minoqua, Wisconsin. He attended Ripon College before coming here. He is a member of the Forestry Club and has been doorway committee chairman and advisor for the Forester's Ball. He has also been A.W.F.C. vice-president and advisor. Tom has played IM football, baseball, and track. He has worked in Minoqua, Wisc.



**Robert B. Poole**

Bob is a forest management major from Missoula. He attended the Univ. of New Mexico before coming here. He is a member of the Forestry Club and has worked on the Forester's Ball. In 1949-51, he worked in Region 3, U.S.F.S. as a cartographic aide and engineering aide. In 1952-54, he worked as lookout, forestry side, and strawboss (respectively each year) on the Brush Cr. Dist. of the Medicine Bow N.F. In 1955, he was acting assistant ranger on the Bow River Dist. of the Medicine Bow N.F.





### **John Rounds**

John comes from Lafayette, California, and is a forest engineering major. He is a member of the Forestry Club and has worked on the Forester's Ball. John was a member of Bear Paws, was ATO house manager, and was on the varsity swimming team. During his summers, he has been a trim saw operator, "trained ape"; and during the summers of 1953-54-55, he worked on the Flathead N.F.



### **Charles E. Rouse**

"Chuck" is a forest engineering major from Lakeview, Oregon. He attended Oregon State College before coming here. He is a member of the Forestry Club, has helped on the Forester's Ball, and belongs to the Independents Club and the Royaleers. In 1951, he worked on the Fremont N.F. and in 1952 on the Ochoco N.F. He was on the Lolo Forest crew in 1953. 1954 saw him with the B.L.M. in Roseburg, Oregon.



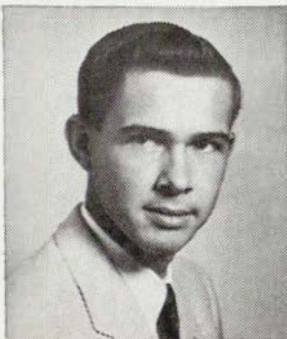
### **Arnold G. Royce**

Arnie is a range management major who hails from Belfry, Montana. He is a member of the Forestry Club and has been chairman and advisor for the gym decorations committee of the Forester's Ball. Arnie is a member of the Druids, having served as V.P. in 1955. He has also been Craig Hall president. He belongs to Gamma Delta and L.S.A. Arnie has played freshman varsity football. He was Forestry athletic manager in 1954. He has played IM touch football, basketball, softball, and volleyball. 1953 and 1954 saw him working on the Flathead N.F. in general forestry work. In 1955, he was grazing guard on the Beaverhead N.F.



### **Ralph Frank Rundle**

Ralph comes to us as a forest management major from Chicago, Illinois. He has been secretary, bull cook, and chief cook for the Forestry Club and chairman and advisor of the wood butchers of the Forester's Ball. He was a member of the Bear Paw, was V.P. for Theta Chi, and is a member of the Druids. Ralph is a member of Activities Board and was treasurer of Interfraternity Council. In 1955, he won the annual Alumni Scholarship Award. He has played IM bowling, basketball, football, baseball, volleyball, track, ping pong, and horseshoes. In 1953 and 1954, he was in Troy, Montana, cruising, marking and scaling timber. In 1955, he worked for the U.S.F.S. in Missoula in timber management research.



### **Richard J. Sandman**

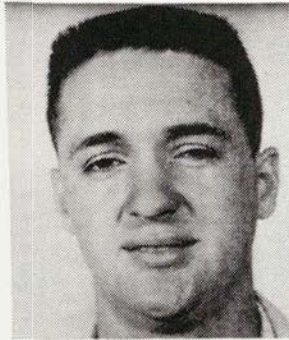
Dick comes from Rapid City, South Dakota, and is a timber management major. Dick is a member of the Forestry Club and has been bull cook and chief cook. He has been on the doorawy committee and publicity committee of the Forester's Ball. He is the M.S.U. Sentinel photographer. Dick has played IM football, basketball, and softball. In 1953 and 1954, he was employed by the U.S.F.S. as a fire control aide and in 1955, he worked in tree surgery in Rapid City, South Dakota.





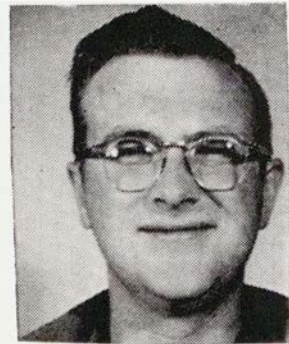
**Peter C. Stofle**

Pete is a forest protection major coming all the way from Honolulu, Hawaii. He attended John Muir College in Pasadena, Calif., before coming here. Pete is a member of the Forestry Club and has been bull cook and chief cook for the group. He has worked on the Forester's Ball and was chairman of the wood butchers in 1955. Pete has been ad-chaser, senior write-up man, and advertising manager for the Kaimin. He is an honorary member of Aquamaids and is a member of Royaleers, serving as editor of the Royaleers yearbook. Pete has also been telephone operator at the University switchboard. He is a member of the Society of American Foresters, the American Forestry Association, Delta Psi Omega, and the Argonauts. In 1951 and 1952, he worked on the Angeles N.F., Saugus R.D., as a fire control aide. In 1953, he was tank truck operator on the Angeles N.F., Saugus R.D. 1954 and 1955 saw him working on the Kootenai N.F., Fisher River R.D. as district fire prevention guard.



**Alan Thayer**

Alan is a timber management major from Riverside, Rhode Island. He attended the University of Rhode Island before coming here. Alan is a member of the Forestry Club and has worked on the Foresters Ball. He is a member of Sigma Alpha Epsilon, Arnold Air Society, and the Newman Club. He has played IM football, golf, and bowling. In 1952, he worked at the Sullivan Lake R.S. in Washington. In 1954, he worked at the Tally Lake R.S. In 1955, he worked at the Forest Insect Laboratory in Missoula.



**Daniel K. Tyler**

"Pete" hails from Missoula and is a wildlife management major. He attended St. Thomas College in St. Paul, Minnesota, before coming here. In 1951, he worked for J. Neils Lumber Co. In 1953 and 1954, he worked in Phillips, Wisconsin, in a trout hatchery and mink farm.

## NOT PICTURED

### **William J. Hankins**

Bill is a forest management major from Billings, Montana. He has played IM softball. In 1953, he worked at the Condon R.S.

### **James Davies McLean**

Jim comes to us from San Luis Obispo, California. He attended Calif. Poly and Ft. Lewis A & M before coming here. He is a member of the Forestry Club and has been doorway chairman for the Forester's Ball. Jim is also a member of the Druids. He has played IM football, basketball, and softball. 1954 and 1955 saw him working on the Lubrecht Experimental Forest.

### **John R. Phelps**

Jack is a forest management major hailing from Winnetka, Illinois. He is a member of the Forestry Club and has worked on the Forester's Ball. Jack is a member of Sigma Nu and is active in IM sports. In 1953, he worked in Choteau as a smokechaser. In 1954 and 1955, he worked as a smokejumper.

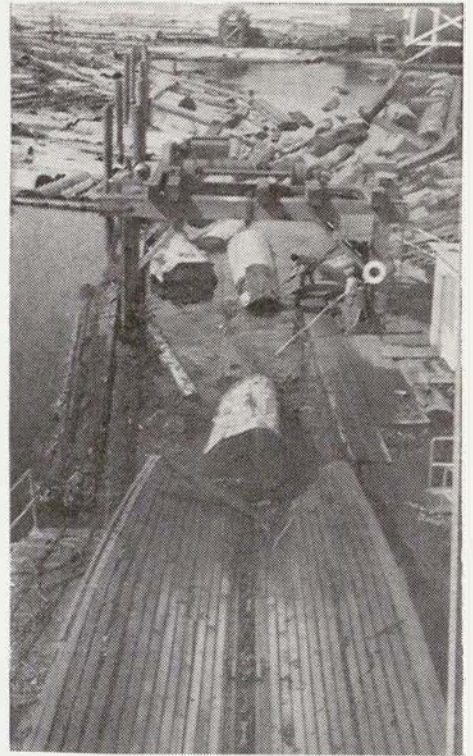
### **Earl Salmonson**

Earl is a forest management major from Otis Orchards, Washington. In 1947, he worked in B.R.C. at Priest Lake. In 1953, he worked as a cruiser for J. Neils Lumber Co. in Libby. In 1954 and 1955, he worked in Missoula.





The winning float — Bertha



Big ones—huh?



Says Krier — "Glad to see you"



Seashells by the seaside

H  
I  
G  
H  
L  
I  
G  
H  
T  
S

of

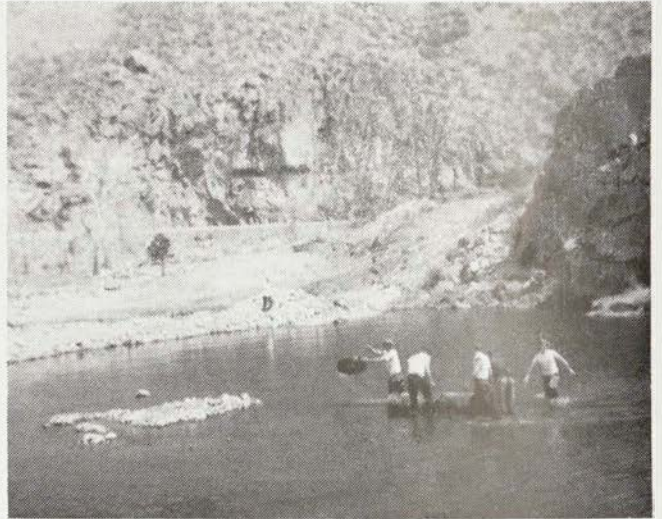
'56



# THE "56" CONCLAVE



Saw her—Art!



What a life saver.



Who won—Guess!



"Roll 'er over"



Timber



"No not my finger—Bob"



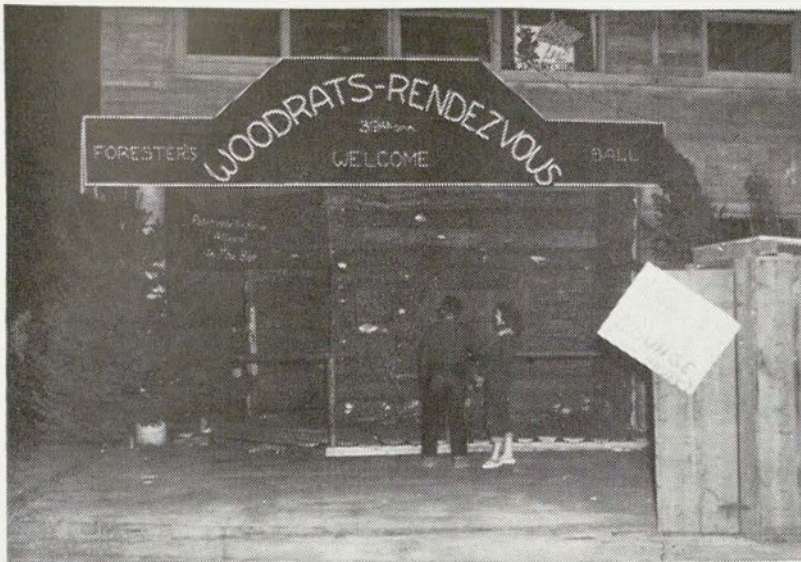
# 39th ANNUAL BALL



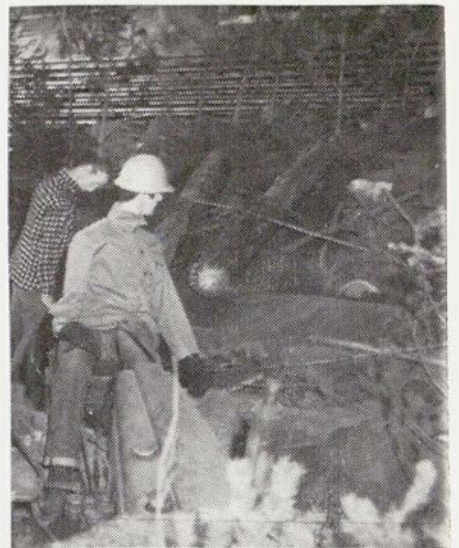
Started early



Famed convo group



"No you can't take your horse inside"



"My, what a slope"



The Bearded Gang



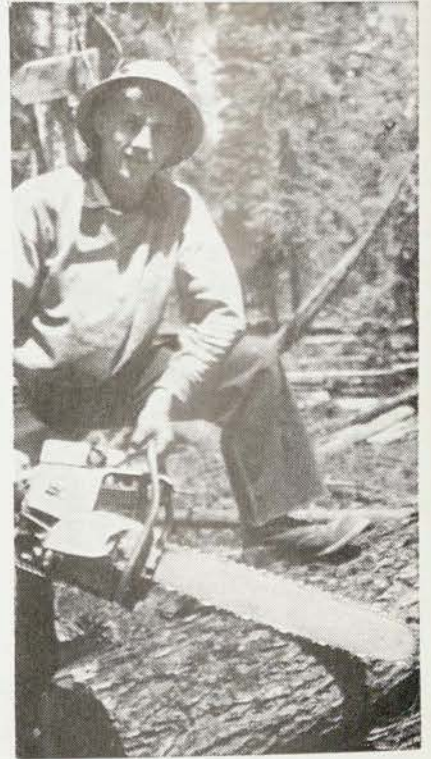
"The Winners"



# SUMMER WORK OF 1956



Soft Work??



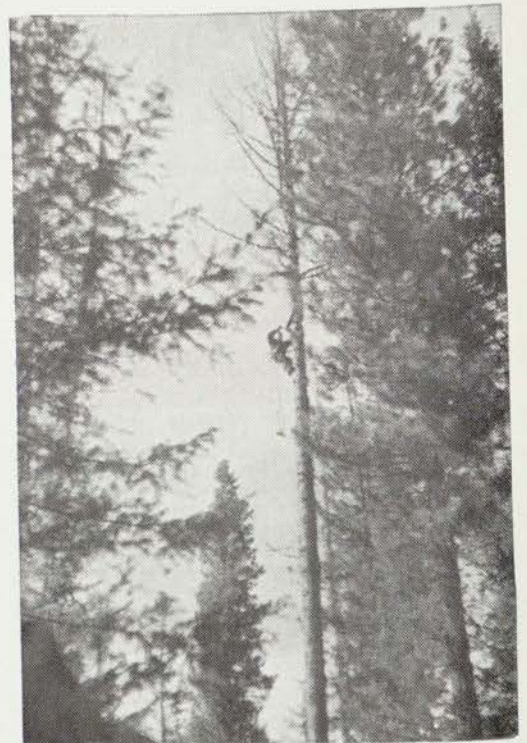
"Oh Charlie"



Geronimo



The fire is one mile to the east, Ken



"Mighty clear up here"



THE BEGINNING OF A NEW YEAR  
FALL 1956



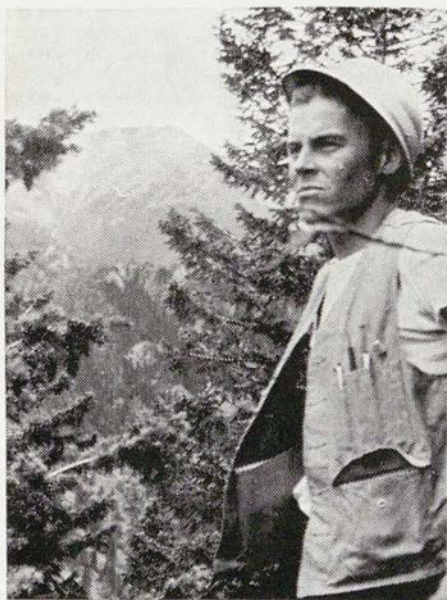


## GRADUATING SENIORS 1957



**Gerald D. Anderson**

Jerry, a wildlife management major from Eleva, Wisconsin, transferred to MSU in 1954. Since then, he's been active in club activities and has put in his share of work on the Ball. The summer of 1956 saw Jerry on a range survey out of Salmon, Idaho. The previous summer he worked with the BLM in Vale, Oregon, and he's worked part-time on the browse-cutting crew.



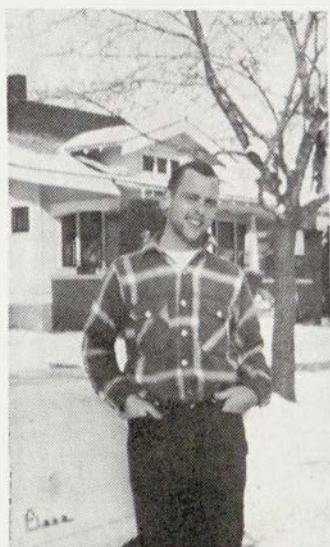
**Richard W. Behan**

Dick comes to Montana from Butler University in Indianapolis, Indiana. He is a silviculture and soils major, and has had two summers with the smokejumpers. In 1954 he manned a lookout for the Flathead National Forest. He was president of the Association of Western Forestry Clubs in 1956, worked on the special effects committee, and is a member of the Druids. Won the Western Forester and Conservation essay contest for 1956, awarded at Victoria, B.C., and published in the March issue of American Forest.



**Robert V. Carruthers**

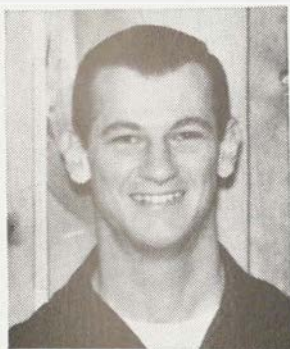
Bob put in some time at the University of Akron before coming to Montana. He spent a summer on a lookout in the Lolo National Forest and got in some cruising the following summer. Bob is a silviculture and soils major.



**Robert T. Dale**

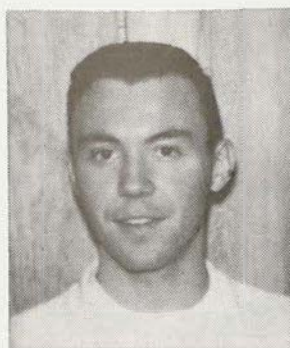
"R.T." hails from Long Beach, California, but prefers Forest Management to surfing. He served as the Senior Representative, kept busy with club goings-on, and worked on the Cloak Room Committee for the Ball. R.T. put in two summers with the Forest Service on the Lolo N.F. before his 1956 job with the BLM at Eugene, Oregon. He was a member of the Montana Druids.





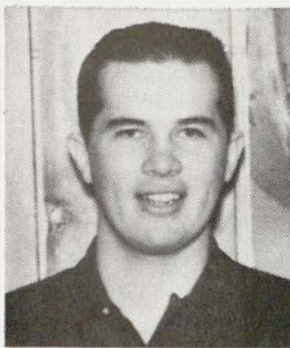
**Jess D. Daniels**

"Jase" has been mighty busy since he came to MSU from Texas A & M in 1954. A Druid, Jess has served as Trail Talk editor for the Association of Western Forestry Clubs, he's been the president of the Honor Council, Vice President of the Forestry Club, treasurer of the Druids, and has spent a lot of time with the Special Effects and Art Committees of the Forester's Ball. In 1954 and '55, Jess worked his way from the trail crew to a Headquarters Guard job, and in '56 worked for the timber management section of ACM. He comes from Houston, Texas, and majored in Forest Management.



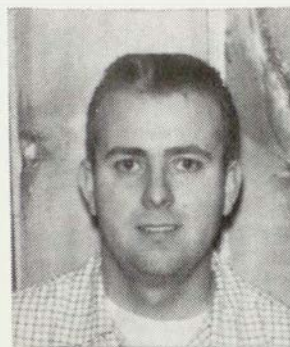
**Joe E. Duft**

Joe, from Morris, Minnesota, is a wildlife major who has managed to occupy himself with club activities. He served as treasurer of the Association of Western Forestry Clubs in '56, and designed the Ford Trimotor for the Special Effects of the '56 Ball. In 1957, Joe was the Special Effects chairman. Joe switched from a lookout job with the Forest Service to a cruising job for the BLM in the summers of 1955 and '56.



**Kenneth W. Dupuis**

Ken—"Dupe"—is an engineering major from Dixon, Montana, and kept busy with club and Ball functions. The summer of '55 saw him scaling for the American Timber Company, and in '56 he worked for Diamond Match Company.



**James W. Eakland**

A Forest Management major from Burbank, California, Jim came to Montana from John Muir College. Aside from interest in the club and Forester's Ball, Jim has filled his summers working at Yosemite National Park, as a foreman for the blister rust control program.





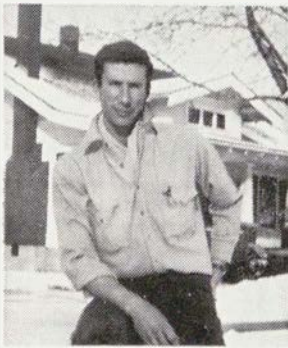
### **Gordon R. DeBruine**

Gordie served as president of the Forestry Club in 1956-57, and was also president of Executive Board. He put in a lot of time on the Ball, and is a member of the Druids. In 1951 and '52, he worked for the BRC program, and in '56 for the Tower Hubbard Lumber Company. He is a utilization major.



### **Robert D. Gallup**

Bob is an engineering major from Fayette, Ohio, and transferred from Ohio State University in 1954. He was a delegate to the Association of Western Forestry Clubs Conclave in 1955, and was banquet chairman when the Conclave was held in Missoula in 1956. He's been active in club functions, and worked on the Doorway Committee for the Ball. Bob has worked on Blister Rust work for the Kaniksu NF, spent a summer on the Kootenai NF, and two summers as a smokejumper. In 1956 he worked in Alaska, surveying and inspecting road construction.



### **John M. Johnson**

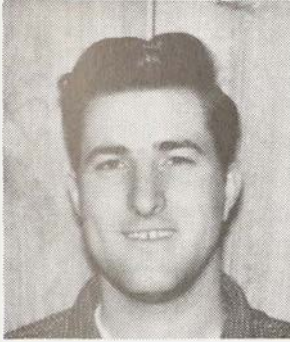
"Big John" is a Missoula native, majoring in Range Management. In 1949 and '50, John worked for the St. Joe National Forest, but switched to the BLM in '55 and '56, working at Baker, Oregon, and Boise these years. He received the Silas Thompson award in 1956, the same year he headed the Gym Decorations Committee for the Ball. John has had intense interest in the Forestry Club, its intramural program, and other activities. He is a Druid, and a member of Executive Board.



### **Arthur Jukkala**

"Spook" is a Forest Engineering man from Lead, South Dakota. His club activities include a lot of work on the Doorway Committee for the Ball. In '53 and '54, Art worked for the Spearfish District of the Black Hills NF. He was a headquarters fireman on the Kootenai in '55, and took up smokejumping in 1956.





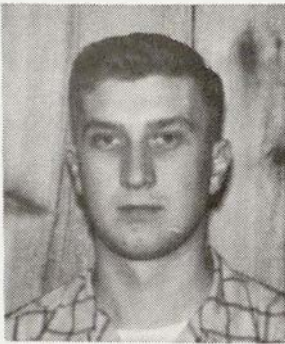
**Alfred W. Laber**

Al hails from Newport, New Hampshire, and majored in Forest Management. He worked on the Lighting Committee for the Ball. Starting as a lookout in 1951, Al was a fire control foreman in 1955, and worked for the Montana State Forestry Dept. in '56.



**James W. Laux**

A utilization major from Milwaukee, Wisconsin, Jim has the distinction of making a profit on a Club Dance, when he arranged a beer concession. He's been busy with club and Ball work, and is a member of the Druids. In 1954, Jim manned a lookout on the Beaverhead N.F. and in 1956 worked in Timber Survey for the Regional Office.



**Ronald J. Rundle**

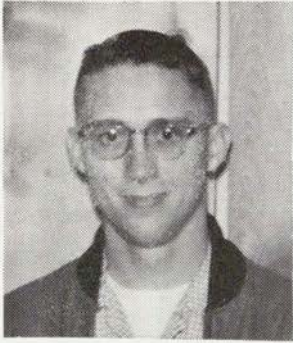
Ron kept busy with club activities, worked on the Ball, and was president of his fraternity, Theta Chi. He is a utilization major from Chicago, and spent the summer of 1954 marking timber on the Troy District, Kootenai NF. In 1956, Ron worked for the Missoula White Pine Sash Company. He played varsity baseball for the Grizzlies.



**Robert G. Symes**

Bob, from Oakland, California, transferred from Utah State in 1954. He put in a lot of time with the Special Effects and Lighting Committees around his pursuit of a wildlife degree. Bob was a smoke-jumper on the Boise NF, and a timber cruiser for J. Neils in 1955. The summer of 1956 he spent working for the Pacific Coast Company in Willet, California.





**Gary K. Seitz**

Gary, from Roundup, Montana, is a Range Management major. Active in club and Forester's Ball work, Gary filled his summers working as a lookout in 1953, a station guard on the Lewis and Clark NF in 1954, and surveying for the BLM out of Miles City in 1956.



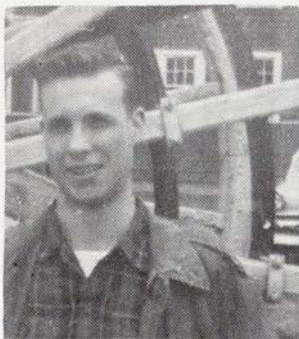
**Richard M. Venable**

Dick has been mighty busy with club activities while engaged in his Forest Economics major. He was president of the Druids, Publicity Chairman for the Ball, and has kept busy with club functions. He comes from Miles City, Montana, and has worked several summers for the Regional Office as a cartographic draftsman and surveying crew chief.



**Paul D. Weingart**

Paul is a Forest Management major from Kendallville, Indiana. In 1954, he surveyed for the Lolo NF, and was a crew chief in 1955. The following summer he worked at Powell Ranger Station, combining his engineering ability with work in timber management. Paul was the Chief Push for the '57 Forester's Ball, topping his interest in Forestry Club activities. He is a member of the Druids.



**Donald C. Fischer**

Don came out to Montana from the University of Illinois in 1954 and went right to work for the club, helping with the Special Effects Committee. He spent the summer of 1955 with the BLM at Medford, Oregon, as a timber cruiser, and then in '56 worked on a range survey out of Boise, Idaho. He is a Forest Management major.

EDITOR'S NOTE: Due to the printing deadline we are sorry that all pictures of the graduating seniors were not included in this book.



## GRADUATING SENIORS NOT PICTURED



**Hubert R. Humes**

Hubie, from Wadsworth, Ohio, left the University of Akron to come to MSU. Active in the club, he worked on the Chow Committee for the Forester's Ball. Hubie manned Sliderock Lookout in 1955 and the next summer was dispatcher at Bonita Ranger Station on the Lolo NF. He is a Range Management major.

**Glen D. Paul**

"Gimp" is a Silviculture and Soils major from Edmonton, Alberta. Active in school and club functions, Glen spent his summers working for the Department of Lands and Forests, Alberta Provincial Government.

**Harvey C. Kom**

Harv transferred from the North Dakota School of Forestry in 1954, the year he manned a Sky-fire Lookout on the Coram district of the Flat-head NF. The next summer saw him as dispatcher at Bonita Ranger Station, and in 1956 he worked for the Protection Division in Yellowstone National Park. A solid club member, Harv spent much time arranging things for the Ball Chow Committee. He is a wildlife major.

**Lewis K. Smith**

Kelsey, a Forest Management major, found time to be Forestry Club president and a member of Honor Council. He also worked on the Dining Room, Gym Decorations, and Publicity Committees for the Ball. He is a member of the Druids, and worked on Traditions Board for the University. Starting in 1945 as a "ribes picker", Kels worked as a crew leader, strawboss, and finally camp supervisor for the BRC program on the Clearwater National Forest. He comes from Helena, Montana.

**John S. Davis**

John, a wildlife major, transferred from the University of Kansas in 1954, and has found time to participate in club and Forester's Ball activities since his arrival here. In 1954 he worked on the school forest helping in a soil survey, continued this work in '55, and in 1956 John worked for the BLM in Billings, Montana. He hails from Larkin, Kansas.

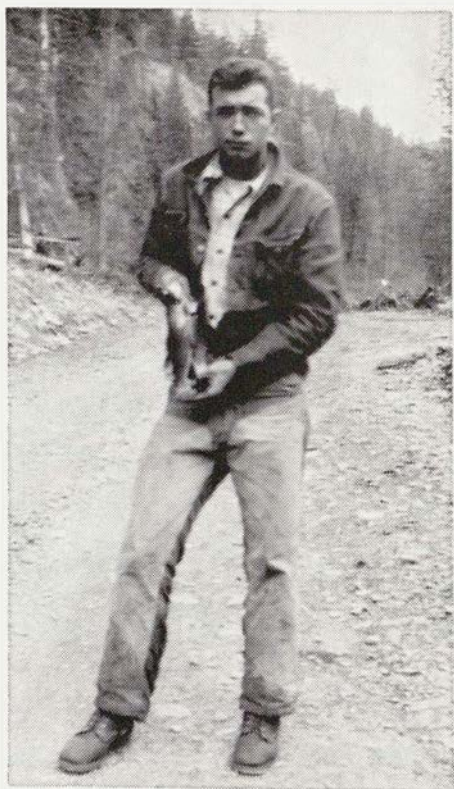
**Robert F. Wambach**

Bob transferred to MSU in 1955 from the University of Michigan. He's taken a terrific interest in club activities, cut lots of trees for the Ball, and is a member of the Druids. In 1957, Bob won a Fulbright Scholarship to study the pulp industry in Finland. In 1949, Bob was a Blister Rust crew leader on the Clearwater National Forest, and repeated the job in 1950. He cruised timber for the BLM in 1956, and is an engineering major.

**Hal M. Westover**

Hal is from Pierre, South Dakota, and is majoring in Forest Engineering. He's worked on the Cloak Room Committee and has maintained an interest in the Forestry Club. In 1951, Hal worked for BRC before his stint in the service. In 1955, he cruised timber for the BLM at Medford, Oregon, and returned to BLM work the next summer, at Eugene, Oregon.





CHARLES BILLHEIMER  
Graduated Winter Quarter 1957

Joe Yao, originally from Formosa, came to M.S.U. in October of 1955 to obtain his masters degree in the field of forest utilization. Joe received his B.S. in forestry from Taiwan Provincial College of Agriculture in 1954. Last summer found Joe working for the B.L.M. in Idaho on a timber cruise. Joe is now experimenting on composition board for his masters degree and will write his thesis on it. This summer Joe will be working for the Pack River Lumber Company, a wafer board factory, located at Sandpoint, Idaho.





# THE FORESTRY CLUB



Executive Board



Sing it Boys



Somebody had a tie on!





Outgoing Prexy—DeBruin



Incoming Prexy, Nelson

Don Nelson  
 Winner  
 of the  
 \$135.00  
 Silas  
 Thompson  
 Award

CONGRATULATIONS



## FRESHMAN CLUB MEMBERS

Boe, Rice, Nussbaum, Stafford,  
 Davey, Quinn, Grietel, Zaroff,  
 Moorehouse, Keefe, Emerson.  
 Ramsey, McMahon, Kobzeff,  
 Johnson, Notars.



## SOPHOMORE CLUB MEMBERS

Scott, Poncin, Smith, Kepper,  
 Stinson.

DeVries, Houlihan, Bull.

Brown, Miles, Ebel.





## JUNIOR CLUB MEMBERS

Stoleson, Walker, Moehring,  
Egerman, Muraro.

Mutch, Uphill, Kabica, Simpson.  
Gibson, Schmidt, Knapp, Galea.



Egerman, Hoffman, Kovalicky,  
Schroedel, Bloedel, Nelson,  
Johnston.

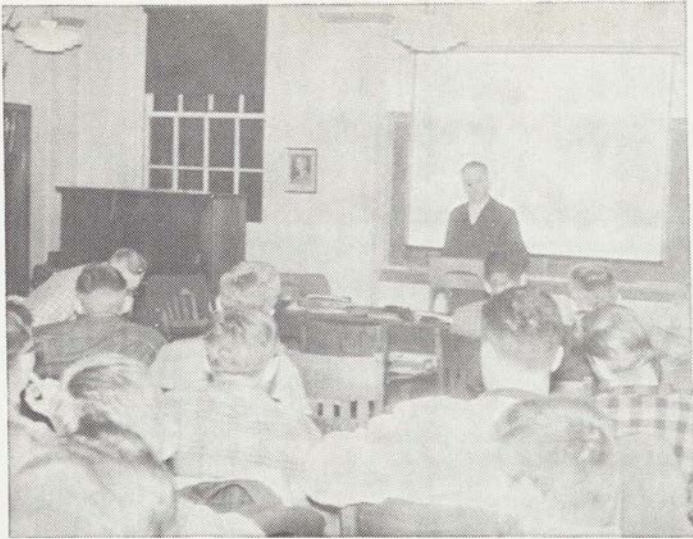
McLaughlin, Peterson, Penny,  
Johnson, Kalkoski, Stone.  
Pittman, Anderson, Cates,  
Bakan



## SENIOR CLUB MEMBERS

Wakefield, Dale, Weingart,  
Daniels, Billheimer.  
Laux, Bond, Duff, DeBruin, Paul.





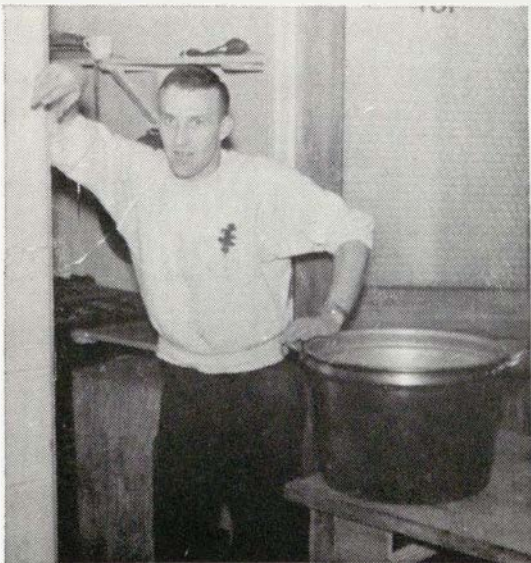
One of many speakers



A voting session



Freshman Tug-of-war



Bull Cook—Gene



Hungry?





## BOWLING TEAM

Left: Stone, Ford, Coster, Bloedel.

Johnston, (Capt.) Kovalicky.



## GUESS WHO??





# SUMMER WORK OF 1956



Don't drop it!



"Look Mom, Here I am"



Some guys have it easy



"Must be at least 200' high"



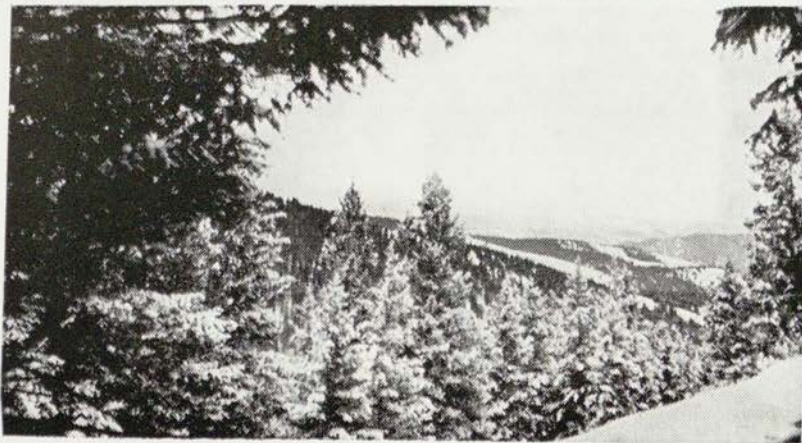
Don't look at me, I'm innocent



What's the joke, the forest is burning up?



WINTER QUARTER '57



Priest lake trip





What'ca looking at?



The chain gang



"Is that right"



Oh—what fun



What a crew

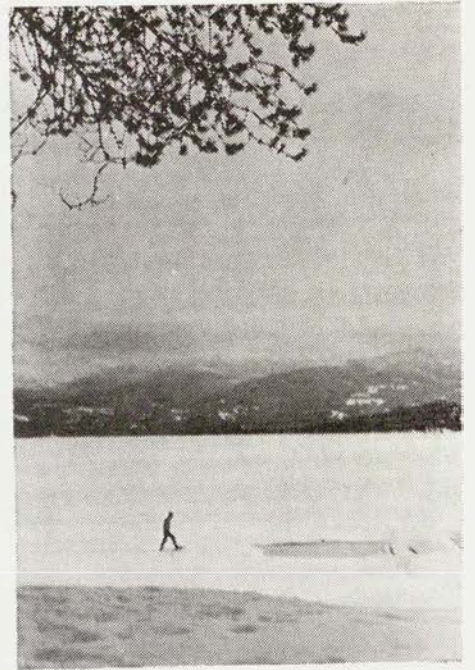


The snowy trail





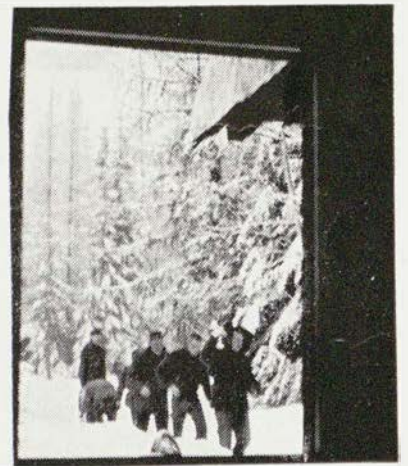
Little cars got stuck



A lost soul



Big cars got stuck—too



"Hi"



"Next move please?"



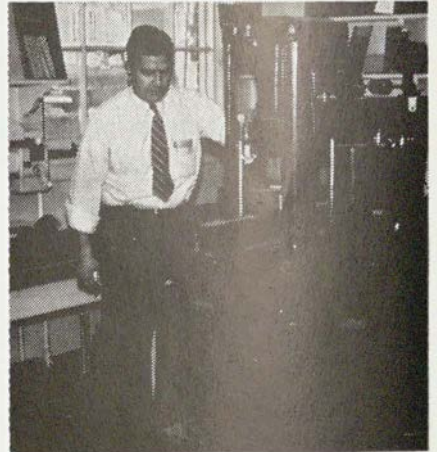
Yep—field trip, huh?



## M.S.U. UTILIZATION CLUB



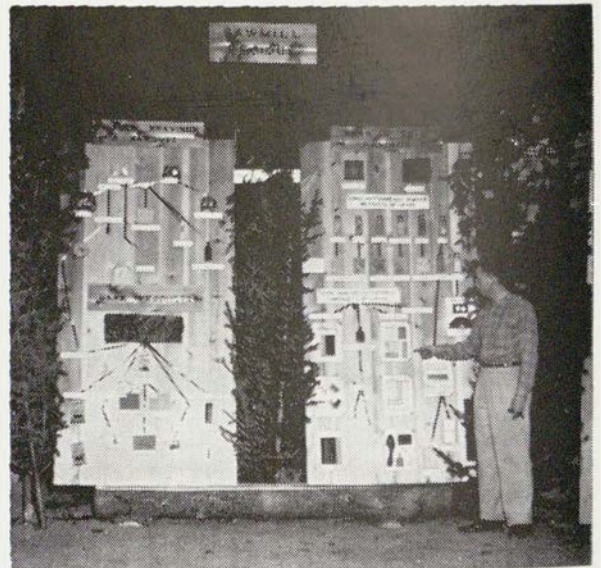
The crew



The boss



Top row: Lundell, Ochs, Kaimin, Rabone, Saxton.  
Bottom row: Krier, Pacquin, Hoffman, Yao, Visminas.



New panels

This year the M.S.U. Forestry School, for the first time in its history, was represented by a wood utilization club. Known officially as the Montana State University chapter of the Inland Empire section of the Forest Products Research Society, this club is the first student organization to become associated with the society. Its origin is the result of the efforts of M.S.U. wood utilization students who felt the need of practical training extending beyond the normal curriculum.

Under the guidance of Prof. John Krier, the first organizational meeting was held Jan. 25, 1957. At this meeting the charter and by-laws were drawn up and it was decided that the club would become affiliated with the F.P.R.S. Election of officers was held and Bill Kaimin was selected president and George Knapp executive secretary.

Through lectures by prominent men in the utilization field, by dissemination of current information on forest products, and by taking part in other activities of the club, the members hope to get a better scope of their field. Individual improvement in speech, letter and report writing, and familiarization with equipment and techniques of the field will also be a goal of the members. Through this program, the members aim to be better equipped to promote and encourage the more efficient use of wood and other forest products.



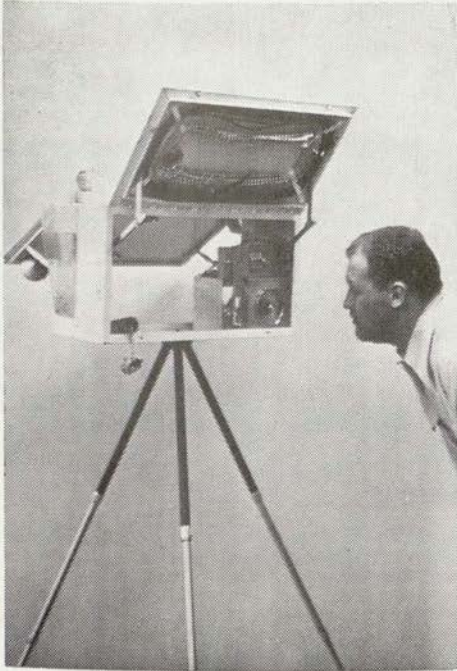
# REMEMBER THIS?



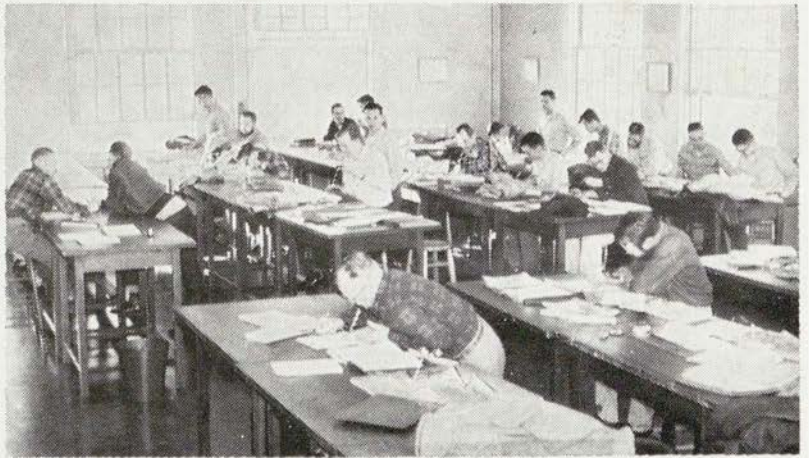
"Now her is dat ting, children"



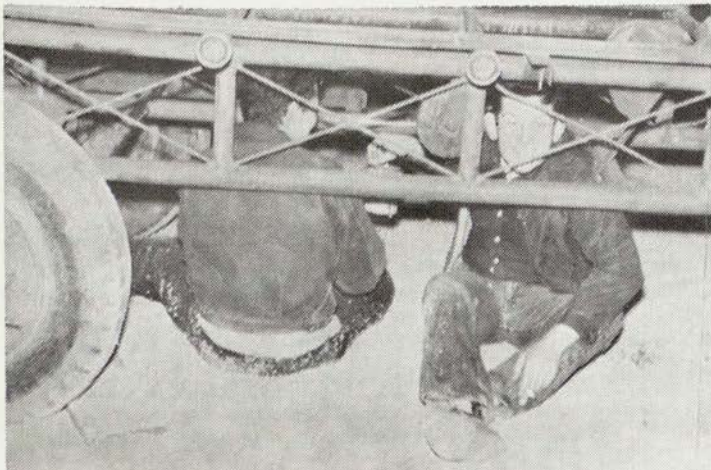
Wake up Eb



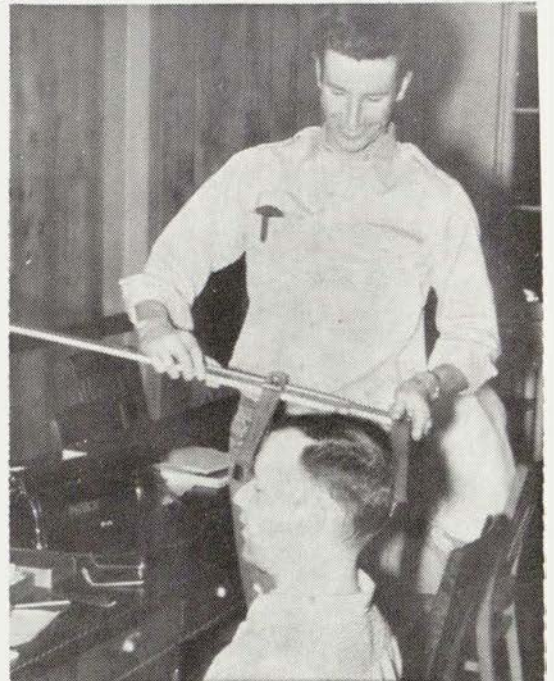
A new fangled camera?



Look busy—Don't they



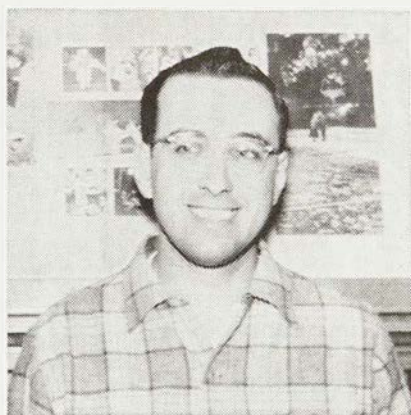
Behind bars again



"My oh my"



# 40th



# Annual

Chief Push—Paul Weingart



COMMITTEE CHAIRMAN  
Left to right: Smith, Duff, Bull,  
Weingart, Hoffman, Knapp,  
Pacquin.



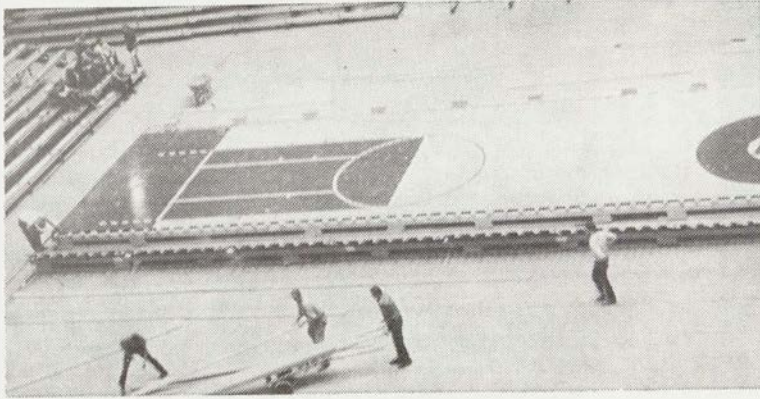
Pacquin, Humes, Gibson, Kar-  
bica, Paul, Bloedel, Venable,  
Bednorz, Nelson, Johnston.



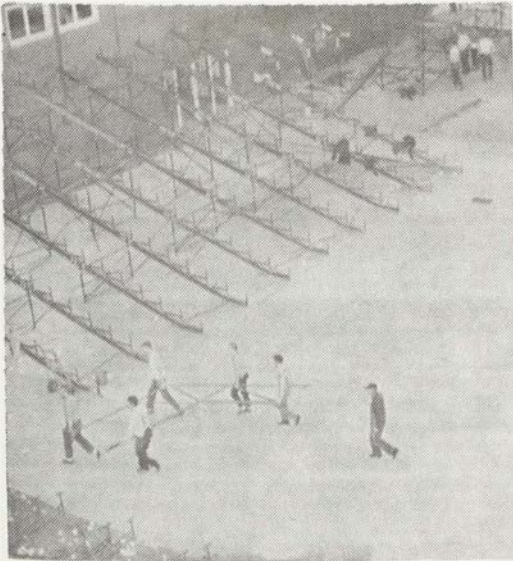
COMMITTEE MEETING  
Quinn, Penny, Hoffman, Foster,  
Nussbaum, McMahon.



# Forester's Ball



Tearing down to set up



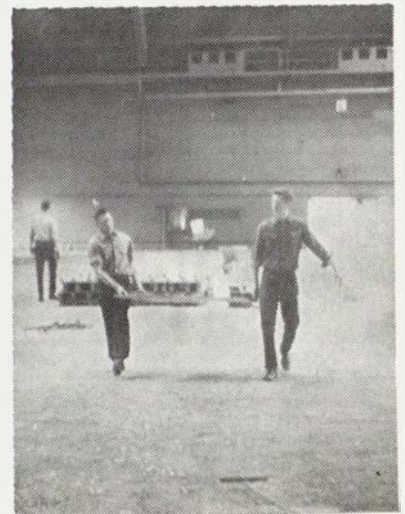
Heavy?



Coffee break



"Tell me another"



Last one



# CONVO



"Now folks"



"Oh no, a live one"



The whole damn gang



Jig or jug?



How did he get in there?



Um pa, um pa



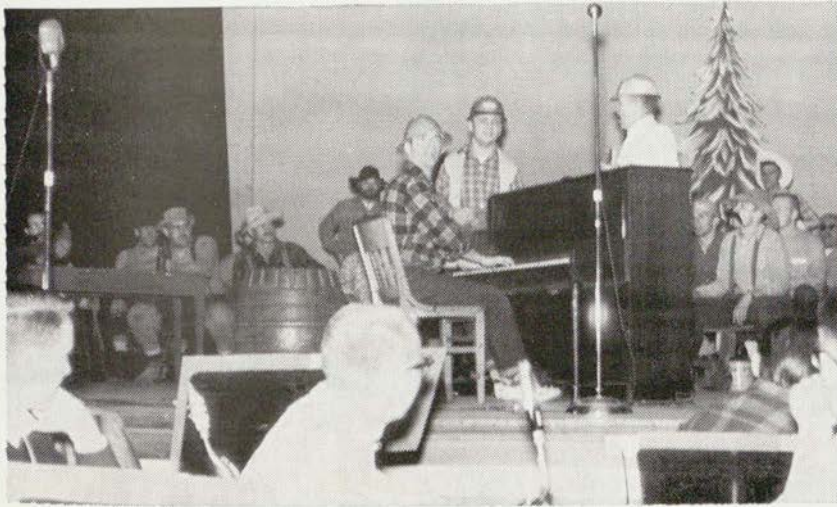


Sing me another

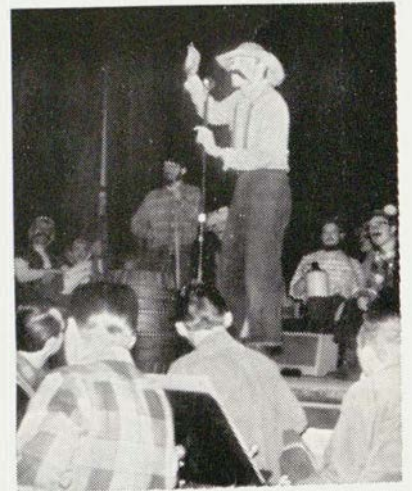
The Convo this year again was a huge success. Rich Gibson leading the way and doing a fine job—with a midnite rehearsal.

Last one??

Hope not.



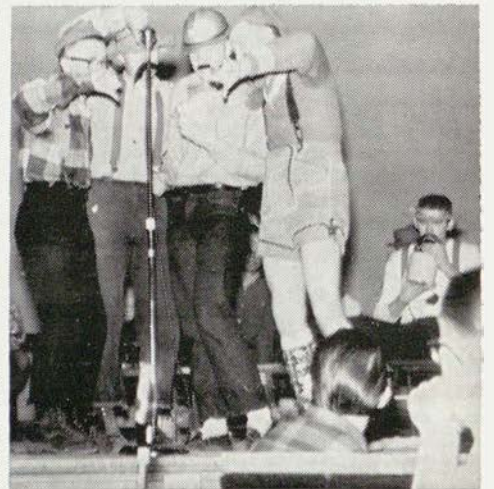
Riddle's gang



Thomas Pasqually Uphill



Mop up



Forester's Quartet



# BEARD CONTEST



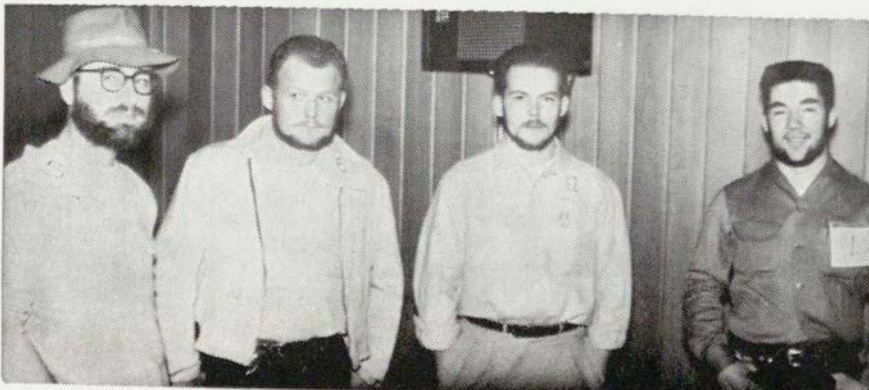
Big  
Paul  
Bunyan



Winners



Little  
Paul  
Bunyan

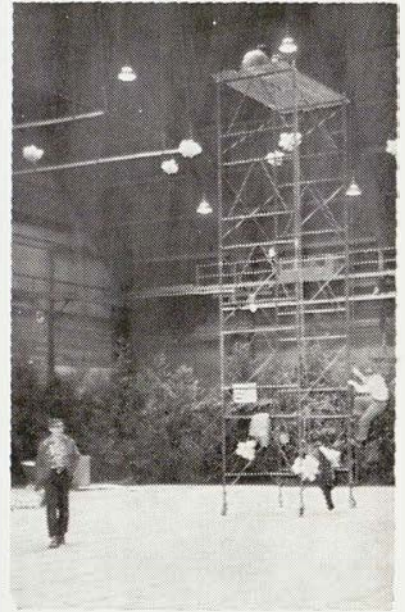


Winners





The ticket tying contest



Setting the balloons



The sawmill

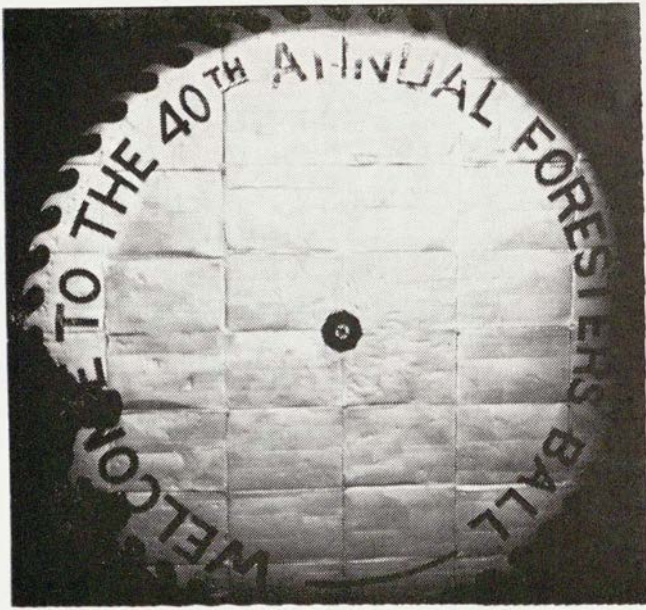


Wednesday nite—tree time



"Put it there, Rog"





Front door



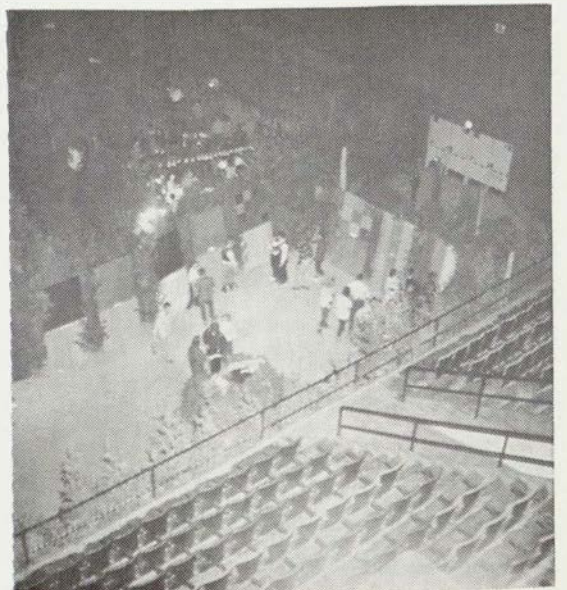
Bar



Keefe



Intermission



Exhibition room





Calbaum



What a sorry bunch



Bowlegged Hess



"The operation"



All the time he did this



Well I'll be doggoned!





Winners of costume contest



Wow



Danforth



Korb & "Ole"



Chow hall



And the balloons fell



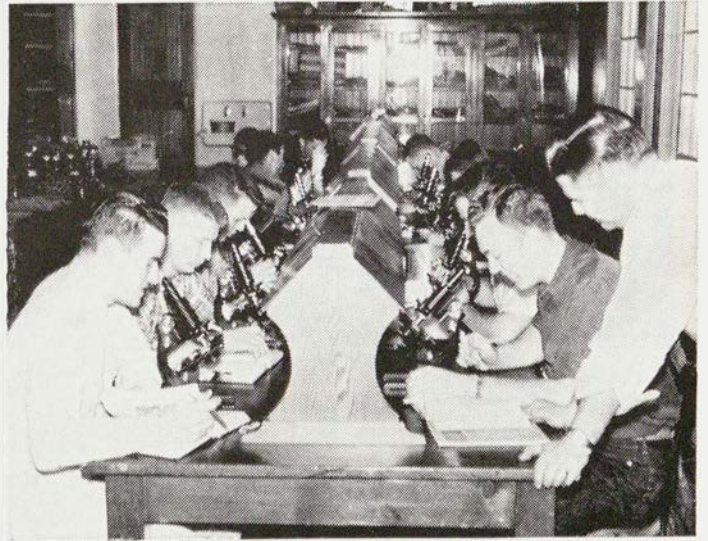
Clean up



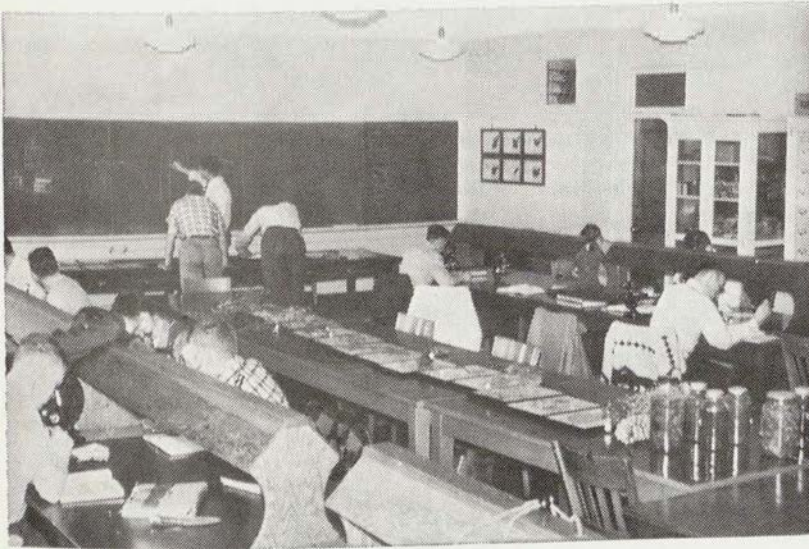
# REMEMBER THIS



A forester pointing the way



Is that right



He'll never learn—John



Go get um—Tiger



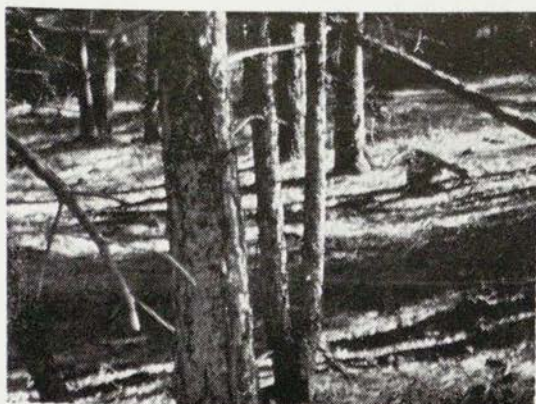
Shhh—studious



Look at those muscles



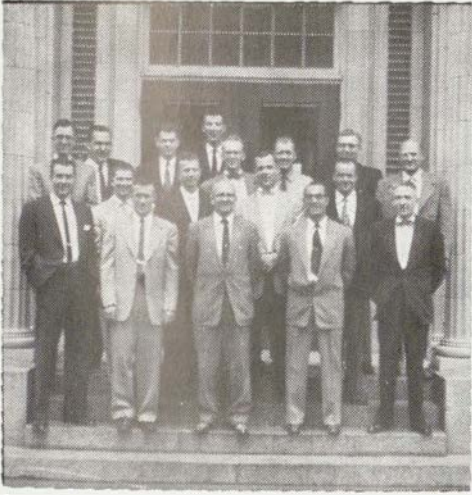
THE BEGINNING OF THE END — SPRING 1957



Lubrecht forest



## MONTANA DRUIDS

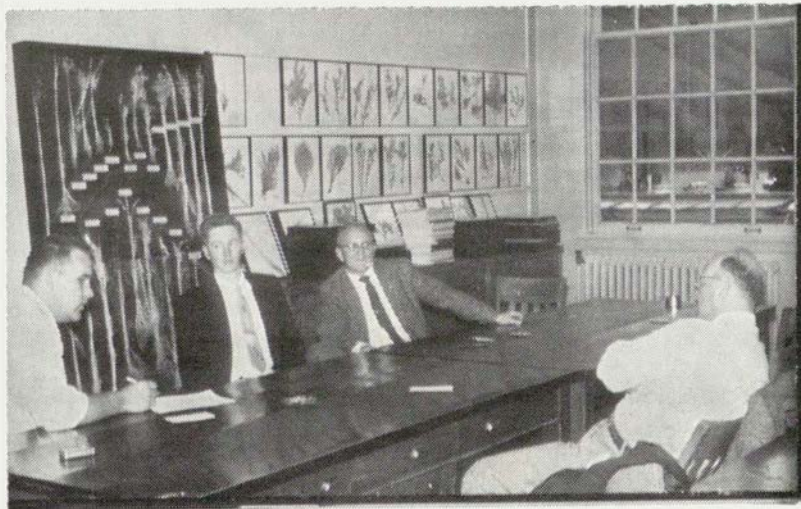


First row: Bloedel, Kalkoski, Lovell, Galea, Gerlach. Second row: Cox, Moehring, Grenen, Hoffman, Dale, Steele, Morris. Third row: Nelson, Johnson, Veneable, Eggerman, Bolle.

The Montana Druids is an honor society whose primary function is service. Its objectives are to foster better relationship and understandings between the students and faculty, the school and the Forestry Club and the Alumni. The membership is composed of forestry upperclassmen who have proven their ability and desire to promote these interests.



Committees meeting.



Committees meetings.



## M.S.U. SCHOOL OF FORESTRY HONOR CODE

THE HONOR CODE IN THE SCHOOL OF FORESTRY AT MONTANA STATE UNIVERSITY WILL ENBRACE ALL THE ATTRIBUTES OF GOOD CITIZENSHIP AND PROPER PROFESSIONAL CONDUCT DEMANDED OF ALL PROFESSIONAL MEN.

The Honor Council will act as an incentive to further the attributes of good citizenship and proper professional conduct. To help, aid, and assist students toward that objective, will be the primary goal of the Council.

The Honor Code will be enforced by an Honor Council consisting of five (5) student members and one (1) faculty advisor. Two (2) members each from the Junior and Sophomore classes and one (1) member from the Freshman class will be elected to the Honor Council by the members of the School of Forestry.

The Montana Druids, Forestry Honorary Fraternity, will nominate (2) candidates for each position on the Honor Council to be filled. The faculty advisor will serve one full year, being elected by the Council members during early fall quarter.

### AUTHORITY OF THE HONOR COUNCIL

The Honor Council, elected by the students of the School of Forestry, will rule on all infractions of the Honor Code as it applies to academic work in the School of Forestry, and on all breaches of obligations which ordinarily are thought of as belonging to good citizens of a professional school, in so far as disciplinary action is rightfully a responsibility of the School of Forestry and its members.

### PROCEDURE FOR HANDLING REPORTED VIOLATION OF HONOR CODE

(This procedure will be followed by the Council. It may be replaced or revised by the Council at any time, with the approval of the Students and Faculty of the Forestry School.)

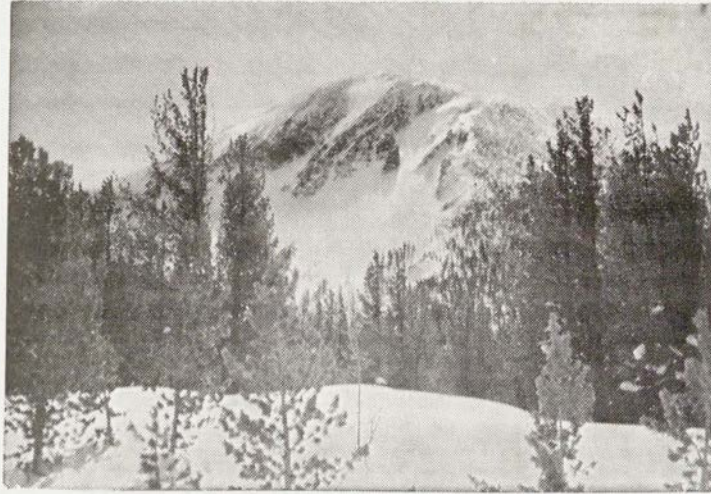
1. Any violation of the Code will be reported to the Council Faculty Advisor, or any Member of the Honor Council.
2. The Council Chairman will call a meeting of the Members at the earliest practicable time following a reported violation. At this meeting, the man reporting the violation will present all facts concerning the suspected violation.
3. The Council will then investigate the case further, if necessary.
4. The Chairman will then appoint a Member of the Council to contact the Accused and ask him to attend a meeting of the Council.
5. When the Defendant appears before the Council, he will be informed of the occasion for which he has been suspected of violating the Honor Code. The Council will inform him of all facts pertinent to the case. He will then be allowed to present his defense.
6. If the Defendant pleads not guilty, he will be asked to leave the meeting until the Council reaches a decision. To find the accused guilty, the vote must be unanimous.
7. If the Defendant is found guilty of violating the Honor Code, the Council will inform the Dean of the School of Forestry, in writing, of recommended action. The recommended action is subject to the approval of the Dean and Faculty Member concerned. If the recommended action is for dismissal, such action will be subject to the approval of the Dean and Faculty of the Forestry School.
8. In the event of recommended action, the entire case shall be type-written in triplicate. The original copy will be placed in the Council file, the duplicate copy will be sent to the Dean of the School of Forestry to be placed in the student's personnel folder; and the triplicate will be given to the accused.
9. In all cases, the Dean will inform the Honor Council, in writing, of final action taken in the case.
10. If the Dean and Faculty Member, or Dean and Faculty, as the case may be, do not concur with recommendations made by the Honor Council, the Dean and Faculty Member, or Dean and Faculty, will meet with the Council to reach agreement regarding the disposition of the case.

### MEMBERS OF THE HONOR COUNCIL

Ken Egerman  
Charles Bull  
Dave Moehring  
Ken Keefe  
Craig Smith, Members  
Faculty Adviser, Gene Cox



# A TRIP TO MOUNT LOLO



Pleasant looking isn't she?



Almost on top



Snow ball fight anyone?



The old holdout



Let's go home



# ENROLLMENT OF THE SCHOOL FOR FORESTRY

Abbot, Raymond W.	22 Fergus Street, Missoula, Montana
Anderson, Richard A.	3 Fergus Street, Missoula, Montana
Anderson, Richard J.	Box 223, Palisades, Idaho
Anderson, Gerald D.	Box F, Eleva, Wisconsin
Autrey, Bryan H.	2526 Terry Ave., Billings, Montana
Babich, Ronald G.	2707 Walnut Street, Butte, Montana
Backlin, Harvey L.	Corvallis, Montana
Bailey, Edward D.	114 State Street, Hamburg, Pennsylvania
Barney, Richard J.	1120 Gerald St., Missoula, Montana
Beckman, Glenn M.	Gallatin Gateway, Montana
Bednorz, Joseph C. Jr.	537½ Hill St., Missoula, Montana
Behan, Richard W.	8201 Englewood Rd., Indianapolis, Indiana
Belau, Lee R.	941 Shasta, Dunsmuir, California
Bergland, Robert T.	1700 5th Ave. N., Great Falls, Montana
Bertlesen, Allan V.	Box 65, Ovando, Montana
Betts, Marion R.	Box 117, Silverton, Idaho
Billheimer, Charles S.	909½ E. Beckwith, Missoula, Montana
Blake, Clifton G.	241 So. 5th E., Missoula, Montana
Blake, Clyde D. Jr.	310 Woodworth, Missoula, Montana
Blakely, Aylmer D. Jr.	Magnolia, Arkansas
Bloedel, Edmund E.	1026 Jerome, Janesville, Wisconsin
Blunn, Thomas C.	St. Regis, Montana
Boe, Deen E.	Box 55, Hays, Montana
Boe, Lynn R.	Wibaux, Montana
Bond, Douglas S.	2209 Fairview, Missoula, Montana
Brigham, Dwayne T.	Custer, South Dakota
Brown, Gary G.	296 E. Front St., Missoula, Montana
Buck, Ronald R.	Glendive, Montana
Bull, Charles J.	Box 158, R.F.D. No. 4, Annapolis, Maryland
Calbaum, Gerald H.	5544 N. 26th St., Milwaukee, Wisconsin
Capps, Craig H.	1105 North Ave., Beloit, Wisconsin
Carruthers, Robert V.	8 Cascade, Missoula, Montana
Carty, David M.	2907 W. McDonald, Billings, Montana
Cates, Robert G.	104 Inez, Weed, California
Cauvin, Dennis M.	1602 4th St. N.W., Calgary, Alberta, Canada
Challinor, Howard C.	R.R. No. 1, Libby, Montana
Chehock, Clyde R.	18 Lake, Missoula, Montana
Colgan, Daniel L.	Box 308, Moses Lake, Washington
Coster, Jack E.	54 Ravalli, Missoula, Montana
Croft, Denis D.	Lance Creek, Wyoming
Dale, Robert T.	Long Beach, California
Danforth, Richard T.	1705 HiWay C, Independence, Missouri
Daniels, Jess D.	800 Harrison, Missoula, Montana
Daniels, R. L.	Helmville, Montana
Davey, Charles H.	2517 2nd Ave., Scottsbluff, Nebraska
Davis, J. S.	4 Lake, Missoula, Montana
Davis, R. T.	1030 E. Burlington, Iowa City, Iowa
Day, Allan C.	6739 Floyd, Overland Park, Kansas
DeBruin, Eugene H.	Kaukauna, Wisconsin
DeBruin, Gordon R.	2126 So. 68th St., West Allis, Wisconsin
Deschamps, Charles C.	317 S. 5th E., Missoula, Montana
Denecke, Richard S.	512 W. Harrison, Bozeman, Montana
DeVries, Richard J.	Conrad, Montana
Dillingham, Richard A.	2101 Crestview, Lafayette, Indiana
Duft, Joseph F.	Morris, Minnesota
Duke, John P.	212 East Main, East Helena, Montana
Dupuis, Ken W.	Dixon, Montana
Dupuis, Raymond L.	Box 385, Polson, Montana
Dyson, Peter J.	14 Lake, Missoula, Montana
Eakland, James W.	
Ebel, Fred W.	Prior Lake, Minnesota
Ebelt, Gerald E.	C. B. Route, Glendive, Montana
Eberle, Donald R.	31 Orton Road, West Caldwell, New Jersey
Edwards, Harold O. Jr.	Yellowstone Park, Wyoming
Eichhorn, Larry C.	Box 382, Forsyth, Montana
Egerman, Kenneth J.	8 Fergus, Missoula, Montana
Embry, Robert S. Jr.	907 California, Libby, Montana
Emerson, Richard Y.	150 E. 4th St., Corning, New York
Faurot, Richard A.	St. Croix Falls, Wisconsin
Fischer, Donald C.	Box 130, RR No. 9, Harmony Way, Evansville, Indiana
Flohr, Donald L.	Box 193, Hamilton, Montana
Fogarty, William R.	3987 Warner Avenue, Mogadore, Ohio
Ford, Robert L.	Box 724, Thompson Falls, Montana



Foster, John R. .... RR No. 6, Springfield, Ohio  
 Fouts, William W. .... Box 349, Livingston, Montana  
 Fregren, Donald H. .... Box 66, Devon, Alberta, Canada  
 Galea, John ..... Bend Farm, Rt. No. 1, Missoula, Montana  
 Gallup, Robert D. .... Fayette, Ohio  
 Gibson, Richard L. .... 12814 S. Maple, Blue Island, Illinois  
 Gorsh, Joe W. .... Butte, Montana  
 Gragg, James F. .... 210 S. Nevada, Oceanside, California  
 Gray, Robert F. .... Gallatin Gateway, Montana  
 Greenough, Robert K. .... 1900 Texas Avenue, Butte, Montana  
 Greitt, Henry E. .... Box 573, Buffalo, Wyoming  
 Guay, Julian W. .... 11339-95A Street, Edmonton, Alberta, Canada  
 Gustafson, Robert D. .... 1132 Vine, Missoula, Montana  
 Haiges, Manfred L. .... 442 Clifton, Sharon Hill, Pennsylvania  
 Harkin, Donald W. .... Glendive, Montana  
 Harrison, Wallace K. .... 2520 Bowser, Ft. Wayne, Indiana  
 Helwig, Laurence L. .... Waubay, South Dakota  
 Hendzel, Leonard ..... Pulaski, Wisconsin  
 Hershberger, Ralph E. .... Box 331, Woostea, Ohio  
 Hoffman, Harry W. .... 713 Robert, Ft. Atkinson, Wisconsin  
 Hoffman, John O. .... 723 St. James, Rapid City, South Dakota  
 Hollowell, Arthur J. .... Drummond, Montana  
 Holmes, John R. B. .... Mirror, Alberta, Canada  
 Hornocker, Maurice G. .... Allerton, Iowa  
 Hossack, John F. .... Remount Depot, Huson, Montana  
 Houlihan, John C. .... Susquehanna, Pennsylvania  
 Howell, Harold H. .... 810 E. Broadway, Missoula, Montana  
 Hudson, Leslie N. .... Shields Route, Livingston, Montana  
 Humes, Hubert R. .... 435 E. Central Ave., Missoula, Montana  
 Hutchinson, James M. .... 6402 16th St. N., Arlington, Virginia  
 Janda, Charles V. .... 4707 Chevy Chase Dr., Chevy Chase, Maryland  
 Jeffrey, Lewis P. .... 39 Carbon, Missoula, Montana  
 Jernigan, Frank P. .... 8 Choteau, Missoula, Montana  
 Johnson, James E. .... 400 E. 3rd Ave., Mitchell, South Dakota  
 Johnson, John M. .... 538 S. 3rd W., Missoula, Montana  
 Johnson, Paul S. .... Box 867, Washburn, Wisconsin  
 Johnson, Robert G. .... Savage, Montana  
 Johnson, Robert W. .... Harlowton, Montana  
 Johnston, Dempsey T. .... Route No. 1A, Columbia Falls, Montana  
 Jones, Carl A. .... 521 Ivy, Missoula, Montana  
 Jones, Philip J. .... 902 Zarelda St., Butte, Montana  
 Jordan, William T. .... Box 72, Trout Creek, Montana  
 Jukkala, Arthur H. .... 410 Grandvies, Lead, South Dakota  
 Kabica, Richard A. .... 3624 West 68th St., Chicago, Illinois  
 Kalkoske, Gene A. .... 215 W. Forest, Neenah, Wisconsin  
 Kamin, William F. .... Forestry School Nursery, Rt. No. 1, Missoula, Montana  
 Keefe, Kenneth W. .... 631 So. Park Street, Paxton, Illinois  
 Keppner, Alfred P. Jr. .... 1536 Morgan, LaGrange Park, Illinois  
 Klies, Forrest L. .... 2744 Nettie St., Butte, Montana  
 Knapp, George ..... 720 Sullivan St., Elmira, New York  
 Kobzeff, John N. .... 4448 E. 55th St., Maywood, California  
 Kohl, Arlan H. .... Lidgerwood, North Dakota  
 Korb, John W. .... 5 Sayer St., Brookeville, Pennsylvania  
 Kovalicky, Thomas J. .... Box 344, Wisdom, Montana  
 Krall, Gary E. .... Ruthton, Minnesota  
 Kramer, Jay S. .... Long Ave., Orwigsburg, Pennsylvania  
 Laber, Alfred W. .... RFD No. 1, Newport, New Hampshire  
 Laux, James W. .... 444 So. 5th St. W., Missoula, Montana  
 Laws, Louis W. .... Box 17, Adams, Oregon  
 Lee, Oliver M. .... 317 McLeod, Missoula, Montana  
 Legner, Francis H. .... 563 E. Conarroe, Philadelphia, Pennsylvania  
 Levering, Thomas T. .... 940 Palmer Rd., Columbus, Ohio  
 Lichlyter, Robert R. .... 62 Ravalli, Missoula, Montana  
 Lix, Robert S. .... 43 Carbon, Missoula, Montana  
 Long, Clinton L. .... 239 Whipple St., Pittsburg, Pennsylvania  
 Loscar, Donald D. .... 1152 W. 4th St., Mesa, Arizona  
 Lovell, John V. .... Rt. No. 3, Shamrock Motel, Missoula, Montana  
 Lukes, Richard F. .... Lisbon, North Dakota  
 Lund, Roger C. .... 58 Ravalli, Missoula, Montana  
 Lundell, Bryce E. .... 236 E. Spruce, Missoula, Montana  
 Mazanec, Richard J. .... 210 W. Lead St., Bessemer, Michigan  
 McCullough, William G. .... 655 Evans Ave., Missoula, Montana  
 McLaughlin, William D. .... Augusta, Montana  
 McMahon, John P. .... 54 Harding Ave., Newington, Connecticut  
 Magee, David W. .... 5217½ Carson, Long Beach, California  
 Mendel, William L. .... Winifred, Montana  
 Meyer, Homer G. .... RR No. 1, Clay Center, Kansas  
 Miles, Edward J. .... Browning, Montana  
 Millar, M. C. .... 440 22nd St. E., Prince Albert, Saskatchewan, Canada  
 Mills, Gordon R. .... Augusta, Montana



Mistrick, Alfred C.	1812 Cooper St., Missoula, Montana
Mitchell, Jere L.	1712 N. 48th St., Lincoln, Nebraska
Mohler, Jerry L.	1404 No. 40th, Lincoln, Nebraska
Moehring, David M.	230 Belmont, Sidney, Ohio
Moorhouse, James	366 W. Pine, Canton, Illinois
Morgan, Harold L.	801 N. 3rd, Miles City, Montana
Muraro, Sylvester J.	Box 819, Kimberly, C., Canada
Mutch, Robert W.	Rt. No. 2, Mulberry Rd., Chardon, Ohio
Nace, Walter T.	29 Lake, Missoula, Montana
Nelson, Donald W. Jr.	216 So. 10th, Livingston, Montana
Newgard, Bruce W.	112 Agnes, Missoula, Montana
Notars, Michael C. Jr.	5647 E. Outer Dr., Detroit, Michigan
Novak, Richard A.	12 Yellowstone, Missoula, Montana
Nussbaum, Walter H.	915 So. 8th, Wausau, Wisconsin
Ochs, Donald E.	2456 N. 57th, Milwaukee, Wisconsin
Olson, Herbert K.	Box 331, Barnesville, Minnesota
Paquin, Robert H.	52 Ravalli, Missoula, Montana
Parker, Gerald V.	432 So. Taylor, Pierre, South Dakota
Parker, Melvin G.	1805 1th Ave. N., Lethbridge, Alberta, Canada
Pasiczyk, Walter L.	4 Silver Bow, Missoula, Montana
Patterson, James B.	509 Kentucky, Dillon, Montana
Paul, Glen D.	11924-925 St., Edmonton, Alberta, Canada
Pennington, Andrew M. Jr.	Box 44, McLean, Virginia
Peterson, Neil D.	Choteau, Montana
Pinney, Jay W.	4301 Leach Ave., Oakland, California
Pittman, Douglas D.	629 5th St., Ann Arbor, Michigan
Poncin, David E.	2311 Mt. Vernon Rd. S.E., Cedar Rapids, Iowa
Price, James	214 S. 1st W., Missoula, Montana
Quinn, George H.	Rt. No. 1, Trenton, New Jersey
Rabone, Howard M.	Franklin Ave., Leonardo, New Jersey
Rahn, James H.	420 2nd St. S.W., Staples, Minnesota
Ramberg, Richard G.	704 Orange, Missoula, Montana
Ramsey, William D.	911 3rd Ave. N., Great Falls, Montana
Remington, Harley R.	Rt. No. 1, Kalispell, Montana
Raugett, Raymond L.	702 5th Ave. W., Moberge, South Dakota
Rice, Dan T.	1234 Harrison, Missoula, Montana
Riley, Dale W.	RFD No. 1, Milford, New Hampshire
Risse, Edward M.	Box 164, West Glacier, Montana
Roda, Richard H.	2526 Terry, Billings, Montana
Ross, Kenneth R.	Rt. No. 2, Hamilton, Montana
Rost, Maynard T.	Bigfork, Montana
Ruff, David D.	Vale, South Dakota
Ruff, Philip H.	18 Gallatin, Missoula, Montana
Rundle, Ron J.	1217 Dakota, Libby, Montana
Sandvig, Frank A.	1915 N. E., Morgan, Oregon
Sartz, Calvert L.	RR No. 2, Beach, North Dakota
Savage, Roger L.	1305 East 9rd St., Whitefish, Montana
Saxton, Leroy F.	Box 61, Ovando, Montana
Saylor, Rolland J.	Manilla, Iowa
Schlueter, Henry L.	533 W. Euclid, Spokane, Washington
Schmidt, Wyman C.	Ocheyedan, Iowa
Schroedel, Daniel J.	720 California, Libby, Montana
Scott, David O. Jr.	422 Daly, Missoula, Montana
Seitz, Gary K.	Roundup, Montana
Shipe, Tilford C.	1812 Cooper St., Missoula, Montana
Simpson, Bernard F.	1828 23 Ave. N. W., Calgary, Alberta, Canada
Skillman, Edward F.	Hoffman Route, Livingston, Montana
Sladish, Paul E.	724 Cliff St., Ithica, New York
Slajer, Charles E.	8815 So. Wall, Los Angeles, California
Smith, Graig E.	18 N. James St., Plano, Illinois
Smith, Lewis K.	935 Jackson, Missoula, Montana
Smith, Richard H.	2417 3rd Ave. N., Great Falls, Montana
Smith, Donald L.	638 Sheridan, Sq., Evanston, Illinois
Squire, Thomas G.	10 Beaverhead, Missoula, Montana
Sorensen, Frank C.	Ashland, Nebraska
Stafford, Charles B.	216 Paddington Rd., Baltimore, Maryland
Stark, Eugene G.	13 Ravalli, Missoula, Montana
Stevens, Mervin E. Jr.	176 Boxbury, Stamford, Connecticut
Stevenson, Donald G.	East Glacier, Montana
Stinson, Donald S.	10821 73rd Ave., Edmonton, Alberta, Canada
Stoleson, Roland M.	528 21st St., Rock Island, Illinois
Stone, Chester O.	River Rd. Trailer Park, Missoula, Montana
Stoops, Ronald R.	1154 W. Luenta St., Covina, California
Sundstrom, Charles	4226 "O" St., Philadelphia, Pennsylvania
Swensson, Ronald W.	1753 14th Ave., Moline, Illinois
Swift, Robert W.	2 Beaverhead St., Missoula, Montana
Symes, Robert G.	5803 Clover Drive, Oakland, California
Talbot, Bruce B.	805 W. Diamond, Butte, Montana
Taylor, Alan R.	10 Gallatin, Missoula, Montana
Tennyhill, Robert D.	Box 76, Othello, Washington



Threlkeld, Duane L. ....	218 18th St. S.W., Great Falls, Montana
Thullen, Robert J. ....	11521 Wallace St., Chicago, Illinois
Tribe, Charles B. ....	603½ S. 3rd W., Missoula, Montana
Turner, Richard W. ....	11 Yellowstone, Missoula, Montana
Uphill, Thomas R. ....	Box 694, Fernie, B.C., Canada
VanderPoel, Denton R. ....	238 N. Mary, Lancaster, Pennsylvania
Venable, Richard M. ....	61 Lake St., Missoula, Montana
Visminas, Casimir K. ....	3 Custer, Missoula, Montana
Wakefield, Sam B. ....	1600 11th St. W., Missoula, Montana
Wales, Kenneth S. ....	Pattee Canyon, Missoula, Montana
Walker, J. E. ....	218 S. Center, Casper, Wyoming
Wambach, Robert F. ....	16 Beaverhead, Missoula, Montana
Weeden, Dean J. ....	St. Regis, Montana
Weingart, Paul D. ....	515 Rollins, Missoula, Montana
Weisbeck, Leonard J. ....	103 N. 2nd, Hamilton, Montana
Westover, Hal M. ....	510 W. Pleasant St., Pierre, South Dakota
Whelan, Laurence J. ....	2415 Argyle, Butte, Montana
Wiant, Richard B. ....	100 Van Buren, Missoula, Montana
Wineholt, Ellwood F. ....	8 5th Avenue, Brunswick, Maryland
Wolfe, Franklin J. ....	9 Gallatin, Missoula, Montana
Wolfer, Richard H. ....	Star Route No. 2, Port Townsend, Washington
Wordal, John E. ....	609 E. Beckwith, Missoula, Montana
Wright, Charles E. ....	4916 Central Ave., Western Springs, Illinois
Yao, Joe ....	10 Chun-teh Lane, Ta-tung Road, Taichung, Formosa
Zaroff, Thomas M. ....	8315 Virgil, Dearborn, Michigan
Zieg, Philip W. ....	Route No. 1, Missoula, Montana
Zinne, Wayne W. ....	Bridger, Montana

Remember Be Careful!  
 Don't Let This Happen to  
 YOU!?







Croft receiving his prize



Foster receiving his prize



Here is your prize foresters!



# *Congratulations!*

THE  
**"BIG 7 FOR '57"**

*Salutes the 1957*

MONTANA STATE UNIVERSITY  
**FORESTRY KAIMIN**

McCulloch, the world's largest builder of chain saws, announces . . . "THE BIG 7 FOR '57" McCulloch's complete new line of 1957 Chain Saws. Seven brand-new saws, with even greater power and dependability than ever before!

McCulloch means quality in every detail . . . quality that is more than paint deep! It goes into every working part — into the important

engineering features you can't see on the surface.

These add up to the longer life and better performance factors you find in every McCulloch Chain Saw. See and operate The Big 7 for '57 today!



**McCULLOCH EQUIPMENT  
COMPANY**

**SPOKANE, WASHINGTON**



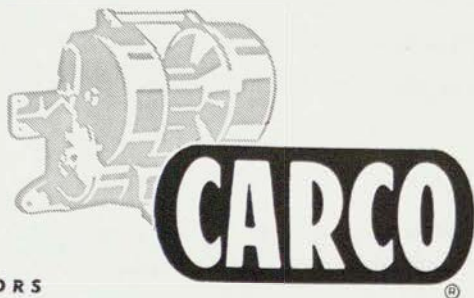


## CARCO EQUIPMENT FITS SUSTAINED YIELD LOGGING...

**F**ORESTERS have found a Carco winch with Carco crawler or rubber-tired arch and tractor the most versatile rig in the woods for harvesting and conserving timber. That's true on tree farms or elsewhere, whether you're clear cutting or selective logging. Because of its great maneuverability, this smooth-working tractor equipment operates with minimum damage to standing trees and minimum expense for access roads. It efficiently and economically bunches and yards large or small timber. It reaches out for isolated logs and winches them in from inaccessible spots.

Wherever you may practice forestry, you'll find Carco winches and arches used by leading loggers and sold and serviced by prominent tractor dealers. You'll find, too, that Carco logging equipment is rugged and dependable with unusual staying power.

PACIFIC CAR AND FOUNDRY COMPANY, Renton, Washington, and Franklin Park, Illinois.



**WINCHES** FOR ALL  
INDUSTRIAL TRACTORS



A Swell Job Well Done by the M.S.U. Foresters

## **THE HUB**

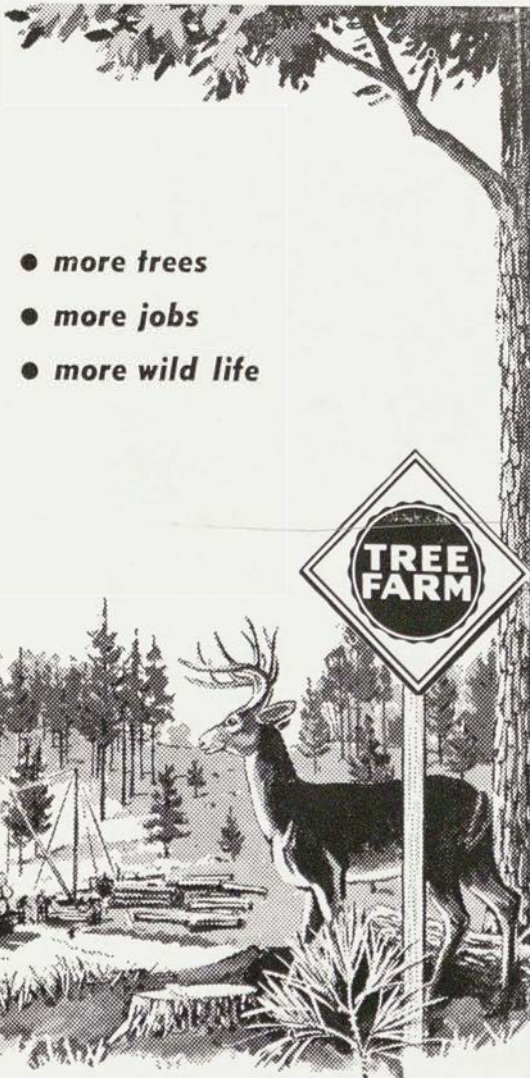
Missoula, Montana

Please  
Support  
these  
Sponsors  
and  
Advertisers

*--Kaimin Staff*



# TIMBER AND GAME— TWIN CROPS



- *more trees*
- *more jobs*
- *more wild life*

**PREVENT  
FOREST FIRES**  
KEEP OUR  
STATE GREEN

**TREE FARMING IS GOOD FOR GAME**

## **WESTERNERS, Inc.**

MISSOULA, MONTANA

# MISSOULA HOTEL



FREE TV-RADIO ON CABLE IN ROOMS  
FAMILY PLAN (Children FREE)  
PRIVATE PARTIES—OFF SALE LIQUOR



## FOR YOUR PLEASURE...

Downtown is Missoula's finest Restaurant, THE MONTMARTRE, the food is prepared with the best foodstuffs that can be had.

For your relaxation, you will also find the Cocktail Lounge complete with music for your dancing enjoyment.

We hope you will enjoy your stay



**HOTEL**

JOE SNEAD, Mgr.

# BIG STUFF...

OR LITTLE STUFF...

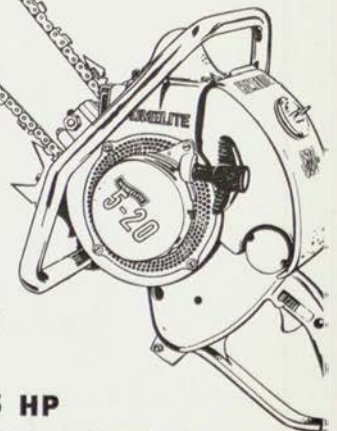
Woodcutting's Easy



with the  
**NEW  
HOMELITE**



**5 HP  
20 POUNDS**





# HIS JOB AND YOURS

The lookout is an important cog in defense against forest fires.

But every citizen, too, has a responsibility.

Our community depends, to a great extent, on forests for our prosperity.

Let's protect our forests from fire.



**J. NEILS LUMBER CO.**

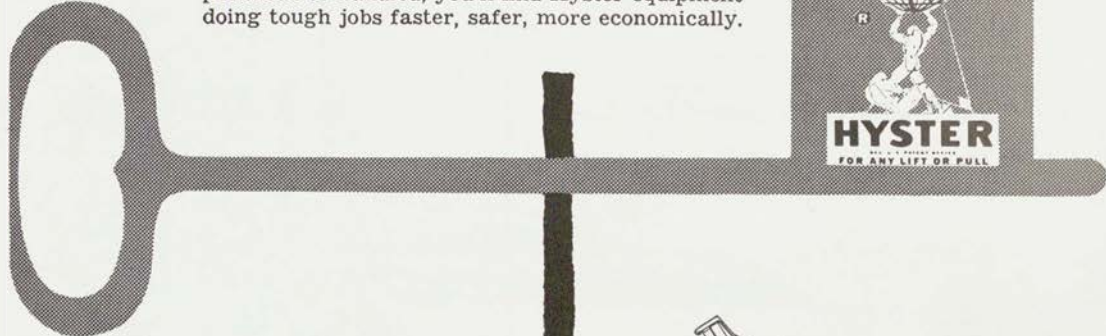
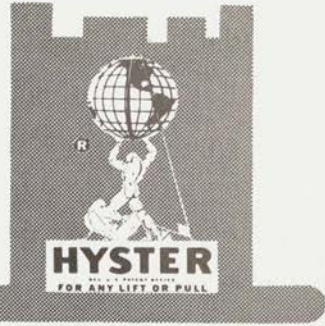
Libby, Montana





# 4 keys to efficiency in the lumber industry

Setting higher standards of efficiency in one of the world's toughest industries for over a quarter century, Hyster machines are your keys to more profitable logging operations. Wherever lumber is produced or handled, you'll find Hyster equipment doing tough jobs faster, safer, more economically.



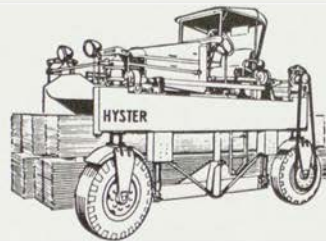
**HYSTER LIFT TRUCKS** (1,000 to 20,000 lb. capacity) speed lumber handling—in and out of yard and shed storage, loading and unloading trucks and railroad cars. Stacking with Hyster Lift Trucks increases your storage capacity.



**HYSTER WINCHES, DONKEYS, YARDERS, LOGGING ARCHES** help provide maximum production efficiency on any logging operation—cable yarding, arch logging, loading and skidding.



**HYSTER GRID ROLLER** builds better log haul roads at less cost. Hyster "Grid" roller crushes pit-run rock right on the road bed to develop long wearing surface that will stand up under pounding of heavy truck loads and reduce hauling costs.



**HYSTER STRADDLE TRUCKS** (20,000 and 30,000 lb. capacity) move large lumber loads with no loading or unloading time, and often make short-haul deliveries right to building site.

Today there are over 700 dealers throughout the world who sell and service Hyster Tractor Equipment and Industrial Trucks.



## HYSTER COMPANY

Hyster, Grid, Donkey and Straddle Truck are registered trademarks of Hyster Company

2902 N. E. CLACKAMAS ST., PORTLAND 8, OREGON  
1003 MYERS STREET.....DANVILLE, ILLINOIS  
HYSTER N.V. ....NIJMEGEN, THE NETHERLANDS

**FACTORIES:** Portland, Oregon;  
Danville, Illinois; Peoria, Illinois; Nijmegen, The Netherlands



**We Are Proud of  
YOU, Foresters**



**JOHN R. DAILY, Inc.**

MAKERS

of

**Daily's Tender Meats**

MISSOULA

MONTANA

**The Home of Good Food**

THE

**CHIMNEY CORNER**

**Guns, Ammunition,  
Fishing Tackles  
Jewelry at its Finest**

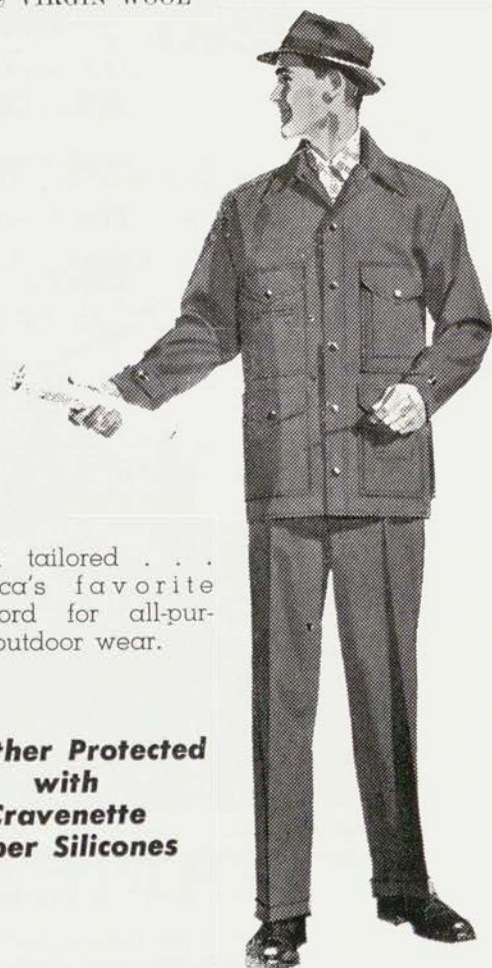


Outdoors . . . everybody  
. . . but EVERYBODY  
wears

**DAY'S**

**RANGER  
WHIPCORDS**

100% VIRGIN WOOL



Action tailored . . .  
America's favorite  
whipcord for all-pur-  
pose outdoor wear.

**Weather Protected  
with  
Cravenette  
Super Silicones**

**Yandt's**  
MEN'S WEAR

321 No. Higgins

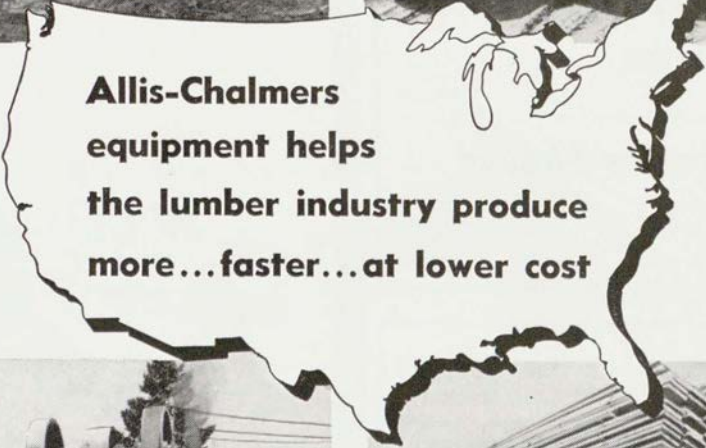
Missoula, Montana



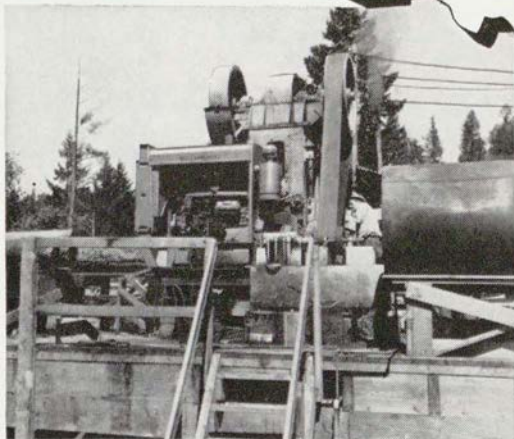
# on the job **COAST TO COAST**

Tractors for yarding and skidding logs, building roads, clearing landings, cutting fire lanes.

Motor graders for building and maintaining truck haul roads, maintaining fire lanes, leveling camp sites.



**Allis-Chalmers  
equipment helps  
the lumber industry produce  
more...faster...at lower cost**



Power units for operating saw and planing mills and other operations requiring stationary power.



Tractor shovels with lift fork or lift tong attachments for loading and handling logs and finished lumber, handling maintenance jobs in the woods or at the mill.

Allis-Chalmers offers a complete line of crawler tractors and tractor shovels from 45 to 204 hp, motor graders from 50 to 120 hp, diesel power units from 12 to 197 hp, gasoline power units from 28.4 to 50 hp — plus matched logging equipment.

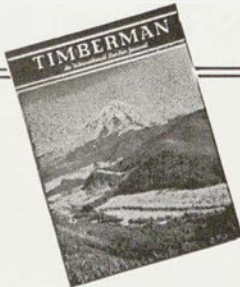
ALLIS-CHALMERS, CONSTRUCTION MACHINERY DIVISION, MILWAUKEE 1, WISCONSIN

## **ALLIS-CHALMERS**





the continuing story of  
progress and development  
in the vast forest industry  
throughout the world!



**What lumber was . . .  
what lumber is . . .  
what lumber will be**

. . . authentically chronicled in THE TIMBERMAN each issue, revealing the many fascinating facets that combine to form one of the greatest of all industrial efforts.

Your economic growth in your chosen field of endeavor can be materially assisted through constant contact with every phase of the giant forest industry . . . and you can best keep pace with its continuing story by reading THE TIMBERMAN regularly.

Use it as your blueprint  
in building a better future

*The* **TIMBERMAN**

EDGAR P. HOENER  
publisher



. . . leading timber industry journal,  
faithfully serving its field since 1899

519 S. W. Park Avenue • PORTLAND 5, OREGON



# D. B. SMITH & COMPANY

Smith Building—Main Street

Utica 2, New York



Leaders Since 1888

of the

## Smith Indian Fire Pump

## HATS OFF!

To the many hundreds of young men devoting their lives to the preservation and promulgation of our natural forests and resources.

Yours is a worthy task —

Keep up the good work

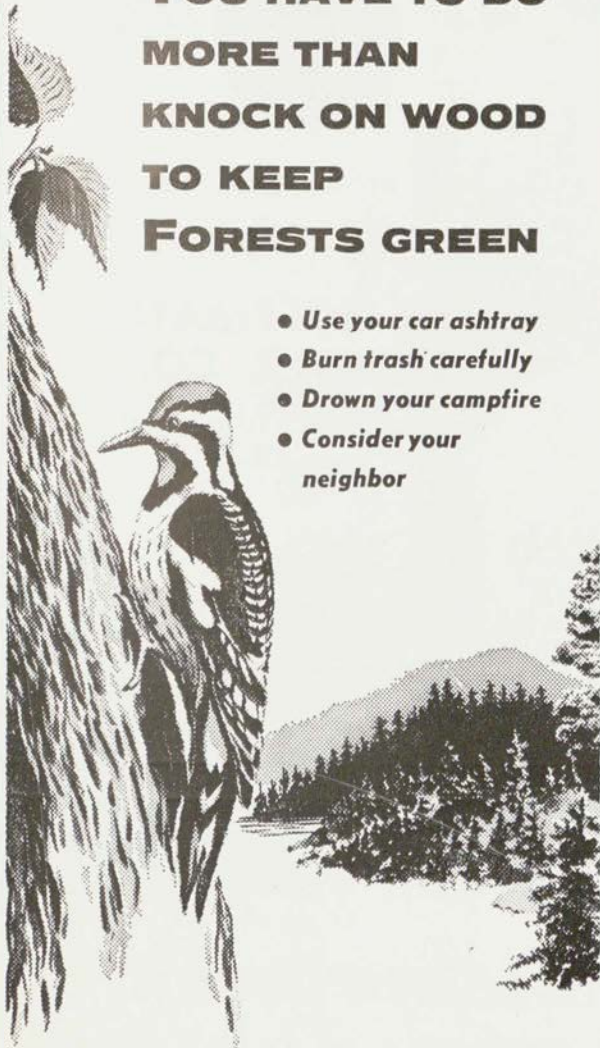
*The Mercantile*

Western Montana's Family Shopping Center



**YOU HAVE TO DO  
MORE THAN  
KNOCK ON WOOD  
TO KEEP  
FORESTS GREEN**

- *Use your car ashtray*
- *Burn trash carefully*
- *Drown your campfire*
- *Consider your neighbor*



**PREVENT  
FOREST FIRES  
KEEP OUR  
STATE GREEN**

**ASSOCIATED  
STUDENTS  
STORE**

ON THE CAMPUS

**THE TURF**

in

Missoula, Montana

with

**REILEY'S CAFE**

OPEN ALL NIGHT

**Shop the NEW**

**PENNEY'S**  
ALWAYS FIRST QUALITY!

Always First Quality

**HANSEN'S FAMOUS  
ICE CREAM**

519 S. Higgins

Missoula, Montana

RALPH HANSEN, Prop.

**I LOVE YOU!**

Only words until said with a  
gorgeous engagement ring from

**B & H JEWELRY**

Missoula, Montana



We Salute You  
Foresters

**THE  
ANACONDA  
COMPANY**

Lumber Division  
Bonner, Montana



Keep up the good work  
Foresters!

**THE HOFFMAN  
LUMBER CO.**

Fort Atkinson, Wisconsin  
Since 1888



**The All-Purpose Boot**



**CARRIN-GREEN  
SHOE MFG. CO.**

Bring You Business to

**THE  
MISSOULA DRUG  
COMPANY**

Missoula, Montana



# The new TL-6 TRAKLOADER®



One of the first of the new TL-6 Washington Trakloaders loads medium sized logs for S. C. Crowell near Sultan, Washington.

## Latest model Washington TRAKLOADER® proves itself equal to toughest loading and yarding jobs

- FASTER TRAVEL SPEED** 4 mph travel speed is more than twice that of ordinary crawler-mounted loaders
- GREATER MOBILITY** Moves quickly in forward or reverse, steers while in motion on steep or crooked roads
- GREATER STABILITY** Designed with large turntable, hook rollers and counterweight to load without guylines
- MORE WORKING POWER** Up to 200 hp diesel power available, driving through torque converter direct to hoist
- SMOOTHER OPERATION** Torque converter and air controls mean easier, faster, smoother operation, less maintenance

For complete specifications on the new TL-6 or any of the other Trakloader models, contact your Washington dealer or write to Washington Iron Works, 1500 Sixth Ave. South, Seattle 4, Wash.



# The Washington TRAKLOADER®



**A GOOD  
INVESTMENT  
FOR A  
COLLEGE  
EDUCATION**

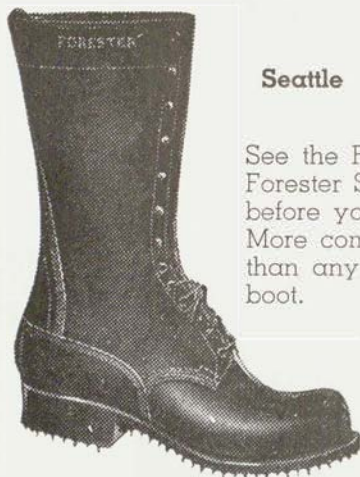


Because forests grow and replenish themselves, a well-managed woodland will provide a steady income.

**FIRST NATIONAL BANK  
WESTERN MONTANA  
BANK**

MISSOULA, MONTANA

**FORESTER  
Hand-made Boot**



Seattle

See the Famous Forester Stitchdown Logger before you buy. More comfortable than any other boot.

Sold Exclusively  
by

*Yandt's*  
MEN'S WEAR

**IDAHO POLE  
COMPANY**

Sandpoint, Idaho  
Bozeman, Montana

POLES  
POSTS  
PILING

Buyers—Producers—Preservers

Lodgepole Pine

Western Larch

Western Red Cedar



THIRSTY?

There's nothing better than an ice cold

**COKE**

*Coca-Cola Bottling Co.*

Missoula, Montana

THE HOME OF

Fine Cigars, Fishing Tackles, Guns,

Ammunition and Licenses

**CHARLIE'S UPTOWN**

122 West Main

Missoula, Montana

CAFE IN CONNECTION

A Welcome Awaits You

*Your home  
stays  
clean with...*



**Pres-to-logs**  
*Stoker Fuel*

The housewife gets a break when you burn Pres-to-logs stoker fuel. It's so clean — no black dust to mess up the basement and filter through the house; no soot to smudge woodwork, walls and draperies; no clinkers; no odor; practically no smoke.

Pres-to-logs stoker fuel is convenient, too. Compactly stored,

easy to handle. You remove ashes only two or three times a year.

**Economical** — Among the lowest price of all automatic fuels.

**Long Burning** — with steady, even heat.

Place your order now for a load of this ideal automatic stoker fuel, and learn the true meaning of real home comfort.

**Missoula Pres-to-Log Co.**

Missoula, Montana

Congratulations Foresters!

**BON TON BAKERY**

Missoula, Montana

A Home Away from Home

is the

**PRIESS HOTEL**

Missoula, Montana





# CONGRATULATIONS SENIORS

We congratulate you upon your attainments and high ambitions.

Wood-using industries and Tree Farms have played a part in your past. We hope they will be still more important in the future.



**KEEP  
GREEN**

**TREE  
FARM**

## DRAGSTEDT'S

Everything Men Wear

on

CIRCLE SQUARE