

2-29-1952

## The Montana Kaimin, February 29, 1952

Associated Students of Montana State University

Let us know how access to this document benefits you.

Follow this and additional works at: <https://scholarworks.umt.edu/studentnewspaper>

---

### Recommended Citation

Associated Students of Montana State University, "The Montana Kaimin, February 29, 1952" (1952). *Montana Kaimin, 1898-present*. 2780.

<https://scholarworks.umt.edu/studentnewspaper/2780>

This Newspaper is brought to you for free and open access by the Associated Students of the University of Montana (ASUM) at ScholarWorks at University of Montana. It has been accepted for inclusion in Montana Kaimin, 1898-present by an authorized administrator of ScholarWorks at University of Montana. For more information, please contact [scholarworks@mso.umt.edu](mailto:scholarworks@mso.umt.edu).

# Orchestra Will Present Classics Sunday Evening

The Montana State University symphony orchestra concert Sunday evening will feature five sections of a classical nature. The first is the "Finale from Symphony No. 4 in G Major, Op. 88" by Antonin Dvorak. Like much of Dvorak's music, the melodies and rhythms of this piece are suggestive of folk tunes, but the plastic and dynamic qualities of the composition are essentially a personal, romantic expression.

The second number, "Concerto Grosso in G Minor, Op. 3, No. 2" by Francesco Geniniana, consists of a set of contrasting movements with the dominant characteristic of an interplay between a small group of solo instruments and the main body of the orchestra.

The "Scherzo in F," third on the program, is an original composition composed and conducted by Robert Sutton, assistant professor of music. Justin Gray, guest clarinetist, will play "Concertino for Clarinet and Orchestra" by Carl M. von Weber.

The final number on the program will be a "Western Suite" by Elie Siegmeister. The selection is composed of two parts, "Night Herding" and "Riding Home." This is music inspired by native American range tunes. Some of the tunes used by Siegmeister are "Goodbye Old Paint," "Doney Girl," "Night-Herding Song," and "Trail to Mexico."

The concert will be under the direction of Eugene Andrie, assistant professor of music. Mr. Andrie made his debut as a violinist at the age of 15 with the Grand Rapids Symphony orchestra. His academic work was done at Western Michigan college, the University of Michigan, and the University of Washington. For 12 years he was first violinist with the Grand Rapids and Kalamazoo symphony orchestras. For three years prior to his coming to MSU Mr. Andrie was instructor of instrumental music in Western Michigan college training schools.

The program will be held at 8:15 Sunday evening in the Student Union auditorium.



Jewel Beck, Joy East, and Betty Smith are shown above administering the "leap year treatment" to befuddled Jim Purcell. Purcell is one of many MSU males who have been contemplating the hazards and luxuries of this "day of all days." Women students have been asked to abide by the rules in handling the male population for the remainder of the year, being careful not to cause any injuries in fighting over the men, as the shortage will undoubtedly grow more acute as the year progresses.



Leap Year Edition



THE MONTANA CUB

## KAIMIN

Volume LIII Z400 Montana State University, Missoula, Montana Friday, Feb. 29, 1952 No. 72

### Grizzlies Win, 63 to 59; Make It Four Straight

Albuquerque, N. M., Feb. 28—(AP)—The Montana Grizzlies caught up with New Mexico in the last three minutes of their basketball game tonight and defeated the Lobos, 63-59, to make it four games in a row for the MSU club.

New Mexico held a 20-10 first period lead, but lagged behind Montana 30-31 at halftime. The Lobos were leading with slightly over two minutes to play when Hal Sherbeck hit a layup to put the Grizzlies ahead 61-59.

Montana stalled out the last 30 seconds and Sherbeck scored once more on a sleeper.

The loss ended New Mexico's Skyline conference season. Tomorrow night the Grizzlies play the Pioneers in Denver.

### Arnold Olsen Is Guest Speaker

Arnold Olsen, attorney general of Montana, was the guest speaker before MSU members of Phi Alpha Delta, national legal honorary at a luncheon in the Florence hotel.

Mr. Olsen in his address stressed the need for good leadership in order to have good government. He said that good government starts on the local level, and that there is a need for people to learn to respect the law. He told the members, "It is your responsibility to answer this need for inspiration among the American people to preserve their moral decency in their respect of law."

### Military Ball Is Tonight At Florence

Nine o'clock tonight the music starts for the thirteenth annual Military ball at the Governor's and Mayfair rooms of the Hotel Florence with the 10-piece Moon Moods, professional campus dance band, furnishing the music. Dancing will continue until 12 p.m. Tickets are on sale through this afternoon at the Student Union at \$2 per couple.

Capt. John Forbes, faculty sponsor, says a good crowd is expected, judging by advance ticket sales to date.

Chairman of the ball is Dave Kreitzer, Dayton, Ohio, president of Scabbard and Blade; military honorary, which is sponsoring the ball with the assistance of the Cadet Sponsor corps.

Intermission entertainment will include a Pershing Rifles silent drill team giving a demonstration of the silent manual of arms, songs by the Ink Blots, a trio composed of Betty Rae Wolfe, Billings; Rosemary Anderson, Billings; and Mary Maurer, Libby; and a dance number entitled "Balling the Jack" done by Nancy Dahl and Marjorie Rutherford, both of Butte. Also, Cadet Col. Joyce Frigaard of the Cadet Sponsor corps will be formally presented at this time.

### Clothing Drive Closes Saturday

Today and Saturday are the final days of the World Student Service Fund's clothing drive on campus, according to Tom Lindeman, Billings, co-publicity chairman for the WSSF.

All students living in dormitories, fraternities, or sororities are supposed to be contacted by representatives in those groups. Any other students who have clothing to contribute to the drive are asked to call 9-1321 or take the clothing to the School of Religion home, 510 McLeod avenue.

Kurt Frey of WSSF in Germany is here to spark the drive.

## Knowledge of the Ages This Leap Year Rules

"Today is the day!" cries Suzybell Zilch, darling of Prof. E. B. Dugan's freshman journalism class. "Gather round, all women who would take advantage of this day of opportunity. In line with current policies, we shall use the subtle touch during our 'open season on men.' Apply the rules gathered from the knowledge of the ages to make this Leap Year successful."

1. All women should walk on the outside of the walk to protect the men from mud splashing.
2. All women should open doors for men, and not one may curse silently, or not so silently, when a door is slammed in her face as she tries to go through in pursuit of a man.
3. No woman may occupy a

chair in the coke store until she is certain that all males are comfortably seated.

4. During lecture courses all women shall take careful notes which the man may copy at his leisure.

5. If the situation appears drastic, all women should stay awake and at attention in all unmarried professors' classes.

6. All women should escort their dates home tonight. They should be careful to observe the curfew, and not to linger on the steps of Jumbo, South, Corbin, or any fraternities after the housemother blinks the lights.

Suzybell's last bit of advice is, "If you've already tried these rules and find they don't work, make a few of your own. And remember—if you don't succeed today, there are 306 Leap Year days left."

### Applications For Kaimin Due Tuesday

Application for associate editors for the Kaimin will be considered next Tuesday at the Publications board meeting, Juanita Kugler, chairman, announced yesterday. All applications must be in the ASMSU office by 4 p.m. Tuesday.

Four associate editors will be chosen. Applicants for the position must fulfill these requirements as stated in the ASMSU handbook: "They shall have served on the Kaimin staff or have had one year's practical newspaper experience, and have attended MSU at least two quarters, including the one in which they are selected."

### Red Cross Starts Drive

That everyone make a contribution to the Red Cross is the goal of this year's drive on campus. Every year in the past, most of the contributions have been larger ones by a few people. This year, according to Naomi Bach, Sidney, chairman of the drive, everyone is asked to contribute, even if it is only a few cents.

Most of the campaign will be carried on in the living groups on campus with the campus Red Cross representative collecting the money. The strip houses will also be canvassed. This year's total goal, including faculty, is \$1,250. The goal for the students on campus is \$500. Proceeds from the APO Ugly Man contest and the Spurbear Paw variety show will go to the Red Cross.

### Loran to Get Cancer Check At Convo

Dr. Muriel R. Loran, assistant professor of pharmacy, is to receive an \$11,300 check from the Damon Runyan Memorial Fund for Cancer Research, incorporated, at today's convocation. The check will be presented by representatives of the Montana Fraternal Order of Eagles.

The remainder of the convocation will be devoted to a music program by the University Symphony orchestra conducted by Asst. Prof. Eugene Andrie. Among the selections to be played are "Finale from Symphony No. 4 in G Major, Op. 88" by Antonin Dvorak, "Concerto Prossio in G Minor, Op. 3 No. 2" by Francesco Geminiani, "Concertino for Clarinet and Orchestra" by Carl M. Von Weber, featuring Justin Gray as soloist.

This will be the second Damon Runyan grant given Dr. Loran this month. She received \$5,000 earlier. The grant, first reported to the University by Walter Winchell, treasurer of the foundation, will be used for research work conducted at the University. Dr. Loran is investigating animal tumors and part of the money will be used for the purpose of an apparatus employed in analysis of complex mixtures.

### FAITH COMMISSION MEETS

The Christian Faith commission of the Student Christian association will continue its discussion of the applications of Jesus' teachings Monday at 4:10 in the Makeup room. The discussion lasts one hour.

### Royaleers Make TV Debut . . .



MSU's own square dancing organization is shown above cutting capers for the television camera Tuesday night at the American Legion building. The demonstration, which began Sunday night and makes its last showing tomorrow night, has been made possible by radio station KXLL of Missoula.

# Open Letter Suggests Theaters Reconsider

Dear Sirs:

Rather than threaten violence or some other drastic action, the Freshman Kaimin, in taking its stand against your recent action to hike student prices, appeals to your good nature in asking you a bit of advice. How would you remedy a situation drastically in need of revision? Picket lines or rotten tomatoes?

Before you made your move you undoubtedly took into consideration the fact that a price hike couldn't hurt your business for long, as American movies play too large a part in the American way of life, providing good wholesome entertainment away from the academic schedule. We think that's why you chose to take it out on the students.

We assume that when you see good crowds in your theaters, you like to see them enjoy themselves. It stems from a certain amount of pride that is born in every red-blooded American.

It is a bit difficult to find the deep-rooted reason for your actions. We assume that you have acted just as thousands of other industries have been forced to act. Everyone hollered when pop went up to a dime, but few seemed to notice that the "handy paper cup" it was served in was half full of ice. That doubled the price again. One wonders where it will all end.

Well, nuffs s'nuff I guess, but as a final suggestion, how about a second thought in this matter? We want to see it rectified, and we know you want to be fair about it. One solution for us if you persist in your present attitude is Simpkins theater here on the campus, which offers choice movies on Sunday evenings at a flat fifty cents—without a fifty-cent theater card.

Play fair with the group that gives you the best support.  
—T.R.N.

## Letters . . .

### BOYCOTT COMMODITIES

Dear Editor:

I agree that the boycott against Missoula theaters does show this generation's ability to organize and also, to some extent, belies the theory that we are an apathetic generation.

However, it seems to me that the dormitories and living groups could choose a business that sells a commodity rather than one which deals in a luxury to vent its wrath upon. Missoula is one of the most high priced communities in the country (statistics of the Bureau of Labor Standards). It seems that those groups could

do the people of Missoula more concrete service if they concentrated their organizations on lowering the price of food, clothing, and shelter rather than on entertainment. Just an idea, of course.

Bill Pate

P.S. Wasn't there a beer price raise recently?

### CANTERBURY TO MEET

Canterbury club will meet at 5:15 Sunday afternoon in the Episcopal rectory. A general discussion will be conducted on the topic, "Marriage and Divorce." Supper will be served.

Each member is requested to bring an interested friend.

## Little Man on Campus

by Bibler



"But Flossie, this is our fourth date."

## The Montana KAIMIN

Established 1898

The name Kaimin (pronounced Ki-meen) is derived from the original Selish Indian word and means "something written" or a "message."

Published every Tuesday, Wednesday, Thursday, and Friday of the college year by the Associated Students of Montana State University. Represented for national advertising by National Advertising Service, New York, Chicago, Boston, Los Angeles, San Francisco. Entered as second-class matter at Missoula, Montana, under Act of Congress, March 3, 1879. Subscription rate \$3.00 per year.

Member,  
Montana State Press Association  
Member, Rocky Mountain  
Intercollegiate Press Association

Editor, Tom Needham; City Editor, Bob Gilluly; Sports Editor, Bob Newlin; Head copyreader, Ray Moholt; Wire Editor, John Dorsett.

Copyreaders: Shirley DeForth, Murlene Herman, Verna Johns, Joan Mogan, and Roxey Ward.

Sports writers: Glenn Chaffin, Jim Graff, Buzz Jones, Art Mathison, Erling Madsen.

Reporters: Rick Beck, Paul Beckstrom, Edward Benz, Murdo Campbell, John Dorsett, Roy Doupe, Marian Geil, Mary Gennara, Jean Gowin, Bennett Guild, Joan Harbolt, Bill Heints, Lynn Jelinek, Rose Kirkpatrick, John Kruse, Dick Lillie, Betty McClure, Delbert Mulkey, Pat O'Hare, Dave Penwell, Gayle Sweedland, Ann Thompson, Ed Trippet, Jim Tutwiler, Carla Wetzsteon, Hazel Williams, and Nancy Wilson.

Printed by the University Press

Jumbo, I won't have any place to keep my beer cold." A less erratic slant is given by Jim Musgrave, Cleveland. "Hooray, no more boxers, cocker spaniels, and other unnamed breeds of dogs running up and down the wings. Peace and quiet." Finally Lew Penwell, Billings, came up with, "If they have a place to store my skis, I'm for it."

## LSA MEETS SUNDAY

The Lutheran Student association will hold its regular weekly meeting at St. Paul's Lutheran church this Sunday. New officers will be elected and they will take over their respective duties at the beginning of spring quarter. A social hour and devotional period will also be included in the program, according to publicity chairman Fred Woeppel.



## USED CARS

FOR BIGGER VALUES

- '50 Chevrolet Dlx. 4-Dr.
- '49 Chevrolet Dlx. 2-Dr.
- '48 Chevrolet Dlx. 2-Dr.
- '47 Chevrolet Dlx. 2-Dr.
- All with Radio and Heater

### OTHERS—

- '40 Chevrolet SD 2-Dr.
- '41 Pontiac SD 2-Dr.
- '40 Studebaker SD 2-Dr.
- '42 Studebaker Com. 4-Dr.

## KRAABEL

## CHEVROLET CO.

301 W. Broadway Ph. 8681

"The Best Deal in Town"

Bring Home a . . .

## Lobo Hide

. . . A Grizzly victory is what everybody likes. Just as they like a cool glass of refreshing Garden City milk.



## GARDEN CITY DAIRIES

Phone 4108 for Doorstep Delivery

**Twinburgers with fries and sauce . . . . . 55¢**  
**One-half Chicken in a Basket . . . . . \$1.15**

WITH TRIMMINGS

SANDWICHES      FAIRWAY      LUNCHES  
BEER              DRIVE IN      FOUNTAIN

Home of the Basketburger—On Highway 93 South

**Don't Drive By — Drive In!**

## How About Brick Instead of Paper?

BY DAVE PENWELL

In conjunction with the proposed plan to build a new "Jumbo hall," this one made out of brick instead of paper, this reporter asked a few of the Jumbo residents their opinion of the new dorm in contrast with their present quarters.

D. W. Foster of Brooks, whose room is pictured above, says, "The only thing I will miss is the morning rush and line to the washroom, Hah!" Bill Jones of Miles City, prominent Jumbo resident, has this to say, "The nostalgic sentimentality enshrouded in these cardboard caves will never find a sequel in concrete penthouses."

Doug DeAndre, Kellogg, Ida., presents the freshman viewpoint by saying, "After they tear down

CALL 6664



DELUXE CABS

# MEAT MEAT MEAT

You'll Find Our Products Are

So Tender, So Good

Bywords for John R. Daily meats and meat products. Thrifty Western Montana housewives have found that experience counts in shopping for delicious, nutritious products, a sure find at Daily's.

JOHN R. DAILY, Inc.

Phone 5645



## Tramps!

So light . . . so casual, Flexible "TRAMPS," the new sensational shoe for spring, styled by Freeman.

A lightweight, handsome shoe that you'll hardly know you're wearing, with spring crepe soles that are new, tough, and flexible. The perfect shoe for your all-spring wear.

Blue or Brown cloth top . . . . . \$6.95

Tan Glove Soft Leather . . . . . \$8.95

—RALPH DICKSON

THE MEN'S SHOP

In the Florence Hotel

# Military Ball, Prohibition Days Are Top Social Events

The thirteenth annual Military ball to be held tonight in the Mayfair and Governor's rooms of the Hotel Florence is the top social event of the week end. The ball is sponsored by Scabbard and Blade, assisted by members of the Cadet Sponsor corps.

The ATO's will hold their winter quarter function, based on a prohibition days theme, Saturday night in the chapter house. Sigma Chi's are planning a fireside the same evening.

The Kappa Kappa Gamma winter function, a buffet dinner at the house, will be held Saturday. Alpha Chi Omega will have a reside Saturday that will carry it a Bohemian theme.

### Sigma Chi

Sigma Chi entertained faculty members and alumni at the annual faculty-alumni smoker Wednesday night.

Theta's joined the Sigma Chi's for a jam session last Saturday.

The Rev. Charles Adams, Great Falls, led the memorial service at the dedication of the Pat Blinn memorial room Sunday evening. The study room was recently completed under the direction of Dick Ladoan, Billings. Mr. and Mrs.

Mike Blinn, Butte, parents of Pat Blinn, ex-'51, killed in Korea, were guests.

### Theta Chi

Hal Harvey, Great Falls, visited the chapter house this week.

### North Hall

Betty Esther Strong, Anaconda, was the week-end guest of Marian Geil, Anaconda.

Monday the SAE's serenaded Margie Rutherford, Butte, Theta, who is wearing the pin of Bob Doherty, Butte, who attends the University of Idaho.

### Phi Delta Theta

Donna Sitazman, Billings, is now wearing the Phi Delta pin of Jim Reid, Billings.

Bev Marrick, Great Falls, received a pin from Tom Campbell, Great Falls.

Barry Trent, Butte, was a house guest last Friday evening.

Doris Anderson, Kalispell, was a dinner guest Sunday.

The pledges are completing

preparations for the annual pledge-active party to be held at the Florentine Gardens, Friday, March 7.

Bonnie Pierce, Billings, received an engagement ring from Jack Yurko, Great Falls.

### Sigma Kappa

Helen Lambros, ex-'54, Bozeman, will marry Pete Kolokotronis, Bozeman, at St. John's Episcopal church in Bozeman, March 2.

Mary Jordan, ex-'54, Butte, married Roger Stover, also of Butte, in January.

Bettyan Halleck, ex-'53, Warm Springs, married Charles H. Hargrave, Colorado Springs, Colo., in San Antonio, Texas, Feb. 3.

Mr. and Mrs. Struckman, Mr. and Mrs. Smith, Mr. and Mrs. Swackhammer, Mr. and Mrs. Coleman, Patty Walker, and Rosalie Space were dinner guests Sunday.

### Alpha Chi Omega

Alpha Chi's had an exchange dinner with Synadelphic Wednesday evening.

Pledges gave a surprise pajama party Sunday. They were dinner guests Sunday and presented the chapter with a record cabinet which they had made.

Mrs. John Lester spoke to the house Monday evening on the subject of graceful movement.

### Alpha Phi

Luanne Birch, ex-'54, Kalispell, received a diamond from Ralph Ripke, Missoula, Sigma Nu. Luanne was a visitor at the house over the week end.

Pat Payne '51, now of Seattle, was a visitor in Missoula last week end.

### Alpha Tau Omega

ATO's had a dinner and smoker Wednesday evening in honor of John W. Vann, worthy grand chief of Alpha Tau Omega. Mr. Vann spent Wednesday in Missoula as part of a regional tour of chapters in the Northwest, which also included the installation of a new chapter at Linfield college in Oregon.

### Delta Delta Delta

Lenore Slaughter, executive director of the Miss America pageant, was a dinner guest Wednesday evening.

An exchange dinner was held with the Sigma Kappas Wednesday evening.

### Delta Gamma

Jacqueline Loisselle, Missoula, is wearing the Sigma Nu pin of Jack Walker, Great Falls.

### Kappa Alpha Theta

Barbara Dickinson, Helena, is wearing the pin of Bill Chase, Helena. He is a Sigma Chi at Bozeman.

Shirley Mashino, Fishtail, received the Sigma Chi pin of Bob Miller, Livingston. Shirley transferred this quarter to Bozeman and both are attending school there.

### Kappa Kappa Gamma

Pledge Patricia Thompson, Havre, spent the week end at the house.

A cider and doughnut party was held by the actives Saturday for

the pledges after their successful sneak.

The house won the Mardi Gras contest and cup sponsored by the Newman club.

The sophomores pulled a successful sneak Wednesday night but the juniors were caught on their Thursday.

### Phi Sigma Kappa

Jack Belland, Dale Forbes, and T. C. Spaulding, house adviser, recently went to a regional convocate at Pullman, Wash.

Clarence Rowley, Ekalaka, has pinned Jane Grogan of Missoula.

Guests and chaperones at the Coffee Dan's Feb. 16 were Dr. and Mrs. Albert Helbing, Dr. and Mrs. J. E. Miller, Dr. and Mrs. M. C. Wren, and Mr. and Mrs. Kenneth E. Moore.

Pledges will hold a house cleaning party this week end in honor of the founders of Phi Sigma Kappa.

## SCA Plans to Visit Crippled Children

The Community Service group will visit a crippled children's school soon and anyone who would like to go should contact Patty Walker at North hall, second west, before 5 p.m. Tuesday, and indicate a favorable time at which they could attend.

"Does the end justify the means in international relations?" will be the topic at the world affairs group meeting Friday at 4:10.



Now . . .

RATES: 20c a line for first insertion; 10c line each consecutive insertion thereafter. Five words to a line. Phone your class ad in today—Kaimin Business Office, J-School.

FOR SALE: '50 Chev. Bel-Air coupe. Fully equipped. Phone 9-1669. 703 Plymouth. 72c

FOR SALE: '63" Northland skis with bindings. Good base wax, steel edges, fine shape. \$20. Call 9-1235. 72c

FOR SALE: Two-wheeled utility trailer. Call 9-1477. 116 S. Ave. E. 72c

**Convenient Place To Tank Up**  
For That Skiing Trip  
**East Side Conoco**  
Just Across Van Buren Bridge

**Collegiate Choice—**  
"AROUND THE CORNER"  
"HEAVEN DROPS  
HER CURTAIN"  
By Jo Stafford  
**HEFTE'S MUSIC SHOP**

You Are Always  
Welcome at the  
**Western Montana  
National Bank**  
Missoula, Montana  
FRIENDLY SERVICE  
SINCE 1889

Tops for Radio and  
Electrical Repairs  
**Walford Electric**  
513 S. Higgins—Ph. 3566



## The Early Bird Calls for Spring Cleaning

Furniture Polish  
Window Shades  
Stair Treads  
Floor Wax

## J. M. Lucy and Sons

Home Furnishings Since 1889

## Don't Wait!

Have Your Car Greased  
Before It's Too Late

FREE PICKUP AND DELIVERY

At

## TROLINGER'S CARTER SERVICE

330 West Broadway

Phone 7335

## YOUR NEW PENNEY'S

Invites You to

## Missoula's Newest Department Store

Where Smart Colorful Fashions  
Are Sold at Saving Prices

DROP IN

See the Latest Spring Styles

at



## Bring Your Best Girl Down Here

— For —

## Sunday Dinner

Delicious Chinese  
or American  
Dinners

## GOLDEN PHEASANT CAFE

318 North Higgins

# POP-U-LAR

## Making Week-End Plans?

Include the

# CHICKEN INN

● Dining ● Dancing

1 Mile East of Missoula on Highway 10

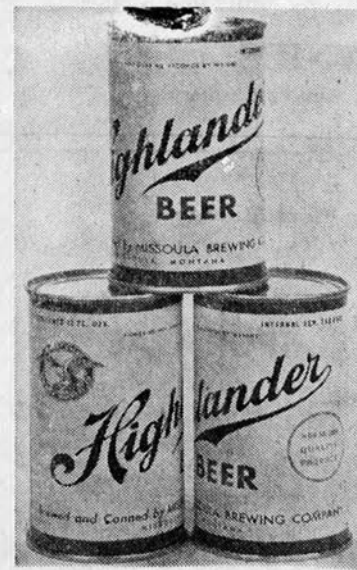
It's Your Comparison We Want . . .

## COMPARE HIGHLANDER

## With Any Fine Beer . . .

We Believe You'll Agree, It's

A BEER BREWED TO PERFECTION



- ★ Sparking  
More  
Refreshing
- ★ Richer  
More  
Mellow

Brewed for Your  
Enjoyment

By

MISSOULA  
BREWING CO.



ROTC Rifle team is pictured above as it displays Betsy Rotey, the traveling trophy which they won by defeating Montana State college and Montana School of Mines last Saturday at Bozeman. The trophy is patterned after an 1824 model of the Minie rifle, a 58 caliber muzzle loaded weapon used during the Civil war. Back row, left to right, are Delos Dutton, Missoula; Ronny Howe, Buycrus, N. D.; Francis Power, Plentywood; Bill Rife, Miles City, and Cecil Gillmore, Lewistown. First Sgt. Milton C. Hansen, team coach, and M Sgt. John M. Burns, who accompanied the team, are pictured in front holding the trophy.

### Bradley TKO'd In Third Match

Chuck Bradley was TKO'd and therefore eliminated from the Chicago Golden Gloves tourney in the second round of his quarter final bout with George Beckstol of Great Lakes Naval Training Center, Ill. Beckstol gained a slight edge in the first round and then floored Bradley early in the second. The referee stopped the fight after Bradley rose at the count of two.

The Fort Benton heavyweight, who won his first two matches, was the last of the Montana fighters to lose.

### Track Coach Expects Large Turnout

About forty men are expected to turn out for the MSU track team this spring, according to Coach Harry Adams. Although outside practice sessions will not start until the weather permits, several of the thinly clad hopefuls have been exercising regularly in the gym during the winter quarter.

All the big individual scorers from last year's track team will be returning to action. This includes Mike Fleming, half-miler; Bill Rife, one- and two-miler; and Bob Ripke on the discus, who were un-

defeated in conference meets. Grizzly fans can also expect points from John Badgley on the high and low hurdles and the broad jump; Jack Luckman with the shot put and broad jump; and Joe Luckman in the sprints and pole vault.

Coach Adams has high regard for this veteran team. Virtually the same athletes placed second in the conference tourney in '51, only behind Utah. Besides returning lettermen and numeral winners from last season, freshmen will also be eligible to compete in conference engagements. Tri-captains elected for the year are Mike Fleming, John Badgley, and Joe Luckman.

The Grizzly trackmen will open their 1952 season April 19 at BYU. April 26, MSU is host to the Montana Intercollegiate track and field meet; May 3, they tangle with Utah State at Logan; May 10, with Utah at Missoula; and May 17, in the Salt Lake City western divisional. May 23 and 24 is the conference tourney, and on June 13 and 14, eligible lettermen will compete in the National Collegiate meet at Berkeley, Calif.

### Today's I-M Sked

Saturday's intramural basketball games start with Mel's Rejects vs. Sigma Phi Epsilon at 9; Wesley vs. Kappa Psi at 10:45; Sooners vs. Corbin hall at 1; Phi Sigma Kappa vs. Rodeo club at 2:45; and the Deacons vs. Sigma Chi at 4.

The Alpha Tau Omega and Ski club game, previously scheduled for 10:45, was postponed.

### Jayvee Hoopsters Wind Up Successful '51-'52 Season

The Montana junior varsity hoopsters wound up their '51-52 basketball season by edging the Sooners, 73-70, thus chalking up their thirteenth victory against a lone defeat.

The jayvees competed against teams from the two intramural leagues, and also met the Flathead Braves twice. The Little Grizzlies stopped the Braves 69-66 at the University gym, but succumbed to a blistering Flathead attack on the Kalispell floor and wound up on the short end of a 61-73 count.

Big George Samuelson, former Glendive Red Devil kingpin, emerged as the Cubs' top scorer as he pumped in 55 field goals and 46 free throws for a total of 156 points. He also scored the most points in an individual contest, netting 22 points in the first Kalispell encounter.

Other key figures in the jayvee

attack were Larry Anderson, former class A all-stater from Helena; Don Chaney, former spearhead of the Livingston Rangers; Hal Snippen, a sparkplug of last year's Great Falls "Cinderella" team; and Billy Kann, a star in class C hoop circles while performing for Thompson Falls.

The **Kay-Wye Fountain**  
 For the Best in SANDWICHES, SOFT DRINKS, PASTRIES  
 814 SOUTH HIGGINS — OPEN —  
 7 A.M. TO 11:30 P.M.  
 Monday Through Saturday

*Call* For Fine Cleaning  
 Clean clothes make a difference. Let us make that difference. Send your dry cleaning to us today.  
**2472**  
 "You Will Be More Than Pleased"  
**Paramount Cleaners**  
 1410 Brooks—  
 South on Highway 93

THIS WEEK END . . .  
**Meet the Gang . . .**  
 At **THE PENNANT**  
 125 WEST SPRUCE  
 RELAX AND ENJOY  
 Missoula's Most Modern  
 Billiard Parlor  
 LUNCH COUNTER

**DRESS UP YOUR GLASSES WITH A NEW FRAME**  
 We Have Dozens To Select From  
**BARNETT OPTICAL**  
 129 East Broadway

For a Treat That Can't Be Beat!  
**BROWNIES In'n Out**  
 Hamburgers, Cheeseburgers, Malts and Shakes  
**BROWNIES**  
 Across from the Mtn-Vu Theater

**GAS For Less**  
 Buy More Mileage With Your Money  
 BUY DEPENDABLE **SPUR GAS**  
 Regular . . . . . 28¢  
 Ethyl . . . . . 30¢  
 WHERE QUALITY COSTS LESS  
**SPUR GAS**  
 500 East Spruce

It's **Hansen's Fountain**  
 for ICE CREAM, SANDWICHES, CHILI, and SOFT DRINKS  
 Open Every Night Including Sunday Until 10 p.m.  
**519 S. Higgins**

For a Treat of Unsurpassed Quality Serve  
  
**Community Creamery Brand ICE CREAM**  
 Made By **COMMUNITY CREAMERY**

. . . you'll look better!  
 In An Arrow White **SHIRT**  
 Better check your winter-wear shirt wardrobe for that extra-fine white shirt . . . select now—be ready for the spring social whirl. And there's only one thing better than a shave and a haircut to make you feel and look like a million dollars . . . that's the crisp, white Arrow shirt in your choice of collar style, your exact size.  
 MEN'S WEAR . . . Street Floor  
**The Mercantile**

# Tennis Stars To Play BYU

Grizzly tennis stars will officially open their 1952 season at BYU April 11, according to the Skyline light conference schedule. Net matches will follow at Utah, April 17; at Utah State, April 18; at BYU, April 25; at Utah State, May 9; and at BYU, May 23 and 24 for the conference meet.

With conference contests a little more than a month off, tennis coach Jack Moody has the team working indoors while awaiting

conditions favorable to outdoor play. Those working indoors are letterman captain Pete Densmore and his brother, Park, Los Angeles, Calif.; Bob Nogler, Stevensville; returning squadman Bill Black, Butte; Bob Mooney, Monrovia, Calif.; Dick Lucas, Ringling; Dirk Larsen, Coleville, Wash.; newcomers Dick Fletcher, Billings; and Dick Solberg, Missoula.

From these prospects, plus letterman Bob Sparks, after the basketball season, and some freshman help, Moody hopes to weld an outfit that will improve upon Montana's fourth place showing in the conference meet at Salt Lake City last year. But Coach Moody sounds a word of warning: "According to advance reports, all other conference teams are stronger too."

From last year's squad which compiled a mediocre two-won, four-lost record, only lettermen Bob Kramer and Pete Crawford have been lost by graduation.

## Begin Hoop Tournaments

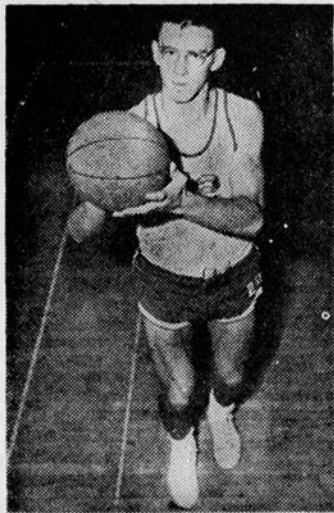
The time for basketball tournament is here, with the class B tourney at Polson in its second day, and the class C tournament being played at the university gym in its third day.

Drummond, top team of the district, showed well this year with only one conference loss. Team standings in conference play are: Drummond, ten wins and one loss; Stevensville, ten wins and five losses; Victor, no wins and eleven losses; Darby, ten wins and five losses; Florence, three wins and eight losses; Corvallis, eleven wins and three losses; and Philipsburg, one win and eleven losses.

According to the season's record, Drummond should be playing the championship game Saturday night, but if the tournament is similar to last year's tournament, it will be hard to say which team will be in the finals.

## Nickel, Trinastich Are Stars To Be

Maybe the 1951-52 Grizzly basketball quint hasn't been the best that MSU has presented, but it is far from the worst. Partly responsible for the team's success are



FRANK NICKEL

two up-and-coming freshmen, Dick Trinastich and Frank Nickel, appearing frequently in Coach Jiggs Dahlberg's lineup.

Frank Nickel, all-state in basketball and football for the Billings Broncs last season, is playing on an athletic scholarship. Both boys ultimately will figure prominently in Coach Dahlberg's plans for the future.

Trinastich, 6' 4" Great Falls product, played center for the Bisons during the 1949-50 season. Grizzly scouts were impressed with Dick's work on the Log Cabin independents last year and consequently he has an athletic scholarship also.

## Grizzly Guff ..

BY BOB NEWLIN

Maxine Hightower, Alpha Phi, is high scorer in girls intramural basketball this year with 132 points in seven games for a 19.8 point average. So far in the elimination tournament she has a 20-point average and high single game honors with 26 points. Last year's high scoring ace, Jary Nelson, is showing well in the elimination tournament with 67 points in three games for a 22-point average.

Big Chuck Darling, who is setting all the records in Big Ten basketball this year, was an all-stater for the Helena Bengals during his sophomore year back in 1946. So far this season Darling has set the record in total points for one season, the most field goals in one season and the largest number of points in three years of varsity basketball. He is almost certain to set two more Big Ten records, with two more conference games to play.

Ed Kalafat has been named by Look magazine as one of the up and coming basketball players to watch in future years. Ed is playing first five for the University of Minnesota this year as a sophomore. He played for Anaconda during his high school years.

The Jayvees have an outstanding record of points scored per game this year with a 61.6 average while their opponents had a 45.5 average. They converted 183 of 389 free throws for a 47.0 percentage. Don Chaney dropped 23 gift tosses out of 39 for a high individual percentage of .590.

## Grizzlies Meet Pioneers Tomorrow At Denver

Montana's ambitious Grizzlies fly into Pioneer camp today after playing New Mexico last night, and will play a return game with Denver Saturday night in the Colorado capital. The Grizzlies, who decided the hustling southerners 66-53 last week end at Missoula, will find a tough squad of hustlers eager for revenge awaiting the Montanans. Denver's outstanding floor game, which was quite effective against the Silver-tips last week, is bound to give the Dahlberg men trouble, especially on the Denver floor. Officiating in the southern Skyline also has tended to allow more block-

ing and personal contact than Montana officials have allowed. In addition to having Tom Rhone, a high scoring forward, the Pioneers can put two deadly set-shot artists, Fred Howell and Joe Hughes, on the floor. Howell scored 11 points against the Grizzlies, and Hughes dumped two quick longies before gathering four personals.

Hey, Get Rid of That Shaggy Dog Look Trail Barber Shop

Enjoy Spring Weather In One of Our DEPENDABLE USED CARS Many Styles to Choose from — Your Oldsmobile Dealer — Turmell Motor Co.

CALL US TO RENT A TYPEWRITER The Office Supply Company 115-119 West Broadway

SALE Buys You Can't Afford to Miss A & T "Alta" Model laminated skis with new racing top, hand rubbed gray one finish, complete with offset A & T lock edges. Finest seasoned hickory, ten piece lamination, factory registered and guaranteed against breakage for one year. Were \$48.50— Now \$35.00 7-Laminations Steel Edged Hickory Skis Were \$22.50— Now \$16.00 100-Nylon Parkas Were \$13.95— Now \$10.00 Gab. Ski Pants Boys' and Girls', All Colors \$9.00 Aluminum Ski Poles - - \$3.50 PLENTY OF GOOD SKIING LEFT! THE SPORTSMAN 123 West Spruce

Murrill's For Your Favorite Drink Murrill's For a Pleasant Atmosphere Murrill's For a Friendly Get-together M U R R I L L ' S A Fine Place To Relax

YELLOW CAB CALL 6644 Florence Hotel Building

Stop in and Try a Delicious FITCHER'S CONEY ISLAND PALLAS CANDY CO. NEXT TO THE WILMA

When good fellows get together they wear Sportshirts by Manhattan Shirts, Sportshirts, Neckwear, Underwear, Pajamas, Beachwear, Handkerchiefs

### Brunhilde Passes To Her Reward

Brunhilde, beloved mascot of Phi Sigma Kappa fraternity, has passed to her reward. The canine mascot of the Phi Sigs passed away at the home of Dick Merritt of Helena, who had taken over the care of the dog after spring quarter last year. Brunhilde had shown signs of old age at that time and the PSK's decided to put their mascot out to pasture. The St. Bernard, a familiar sight to students on the campus for many years, reportedly died from the complications of old age.



Don Foster, Brooks, and Loy Robinson of Drummond, demonstrate the homey atmosphere at Jumbo. Typical "wallpaper" is posted on the walls and both men communicate an air of relaxation which prevails in the paper palace.

#### PAINTER TO SPEAK AT BUTTE ROTARY CLUB

Maj. Don W. Painter of the air ROTC instructional staff travels to Butte May 6 to address a luncheon meeting of the Butte Rotary club. The topic of his speech will be "Guided Missiles."



Seamless Sam, the Silk Stocking man, is pictured above as he assumed a natural pose for the Kaimin photographer. Sam is the first to enter APO's contest to determine the ugliest man on the campus. Don't look now, but it appears there is a run in Sam's gam cover!

#### MEDITATIONS TO BE HELD

A series of Lenten meditations will be held from 12:50 to 1 p.m. in the Makeup room every week day during Lent, according to Tom Lindeman, Christian Faith chairman of the Student Christian association.

The meditations will include

AFTER THE SHOW  
ENJOY A TREAT  
At The  
**93 Stop and Go**  
On Highway 93

short readings and silent prayer periods and will be led by various students.

#### WE SPECIALIZE IN . . .

- ☆ TUNEUPS
- ☆ CARBURETORS
- ☆ BRAKES
- ☆ GENERATORS, STARTERS
- ☆ MOTOR OVERHAUL

Free Pickup in City Limits

**Eli Wood**  
**Auto Repair**

303 1/2 E. Front — Ph. 4200

**We Rent and Repair**



**TYPEWRITERS**

**Typewriter Service & Supply**

314 North Higgins

Shop at

**K and W Grocers, Inc.**

For the best in Fresh and Smoked Meats,  
Staple and Fancy Groceries

PHONE 2164

541 SOUTH HIGGINS

**NORTHERN BAR and LOUNGE**

"Longest Bar in the Northwest"

Dancing

In the Rose Room

**This Week Your College Counselor**

Is Showing Cecil's Spring Dresses

Peggy will show you pastel or print dresses in cotton, rayon, and shantung, reasonably priced from \$7.95 to \$18.95.

See them in a variety of styles designed for the young sophisticate by "Carol King" and "Shirley Lee."

"Shirley Lee" dresses are designed especially for the junior petite figure.



Peggy Lawson of Billings, counselor for this week, is a sophomore home ec major. She is interested in music and sings in a cappella and with the Jubileers. Peggy belongs to Alpha Phi sorority.

*Cecil's*

HAMMOND ARCADE BUILDING

### Home Ec Tea Will Feature Speaker

The Home Arts club is giving an informal tea Monday afternoon at 4 o'clock. Spring fashions are to be discussed by a speaker from the ready-to-wear department of the Missoula Mercantile.

The tea Monday will be the first in a series of four informal parties given by Home Economics majors and minors throughout the remainder of the year. The purpose of the parties is to create an atmosphere of friendliness and a medium for the girls to get to know each other outside of class. The parties, given each time by one of the four classes and sponsored by one of the four faculty members, will last an hour and a half. They will feature outside speakers, entertainment, and demonstrations.



**Electricity— Still Your Biggest Bargain**

In the area served by The Montana Power Company, there's plenty of electric power, still available at rates 10 1/2 per cent below the U. S. average. You can run your home on just a few cents a day with electricity.

**The Montana Power Company**

Go You Grizzlies . . .

**Dump the Lobos**

**Banquets**  
"Our Specialty"

**STEAKS  
PRAWNS  
CHICKEN  
SPAGHETTI**

— REGULAR HOURS —

Saturday 6-2

Sunday 2-11

**HAPPY BUNGALOW**

10 Miles East on Highway No. 10

Phone 8285

THE STORE FOR MEN



Check this smart Jarman as a must buy! Its design is simple and restrained and it gives you the expensive look you like—a terrific value that pays dividends and then some. Buy friendliness of fit today.

1385

**THE HUB**

GEORGE T. HOWARD