

University of Montana  
**ScholarWorks at University of Montana**

---

Syllabi

Course Syllabi

---

Fall 9-1-2003

## LS 151L.02: Introduction to the Humanities

K. M. Wiering

*University of Montana - Missoula*

Let us know how access to this document benefits you.

Follow this and additional works at: <https://scholarworks.umt.edu/syllabi>

---

### Recommended Citation

Wiering, K. M., "LS 151L.02: Introduction to the Humanities" (2003). *Syllabi*. 9555.  
<https://scholarworks.umt.edu/syllabi/9555>

This Syllabus is brought to you for free and open access by the Course Syllabi at ScholarWorks at University of Montana. It has been accepted for inclusion in Syllabi by an authorized administrator of ScholarWorks at University of Montana. For more information, please contact [scholarworks@mso.umt.edu](mailto:scholarworks@mso.umt.edu).

University of Montana  
Department of Foreign Languages and Literatures  
Classics

---

## Introduction to the Humanities

**LS 151L (4 cr) FALL  
2003**

MWF 9:10 - 10:00; LA  
338

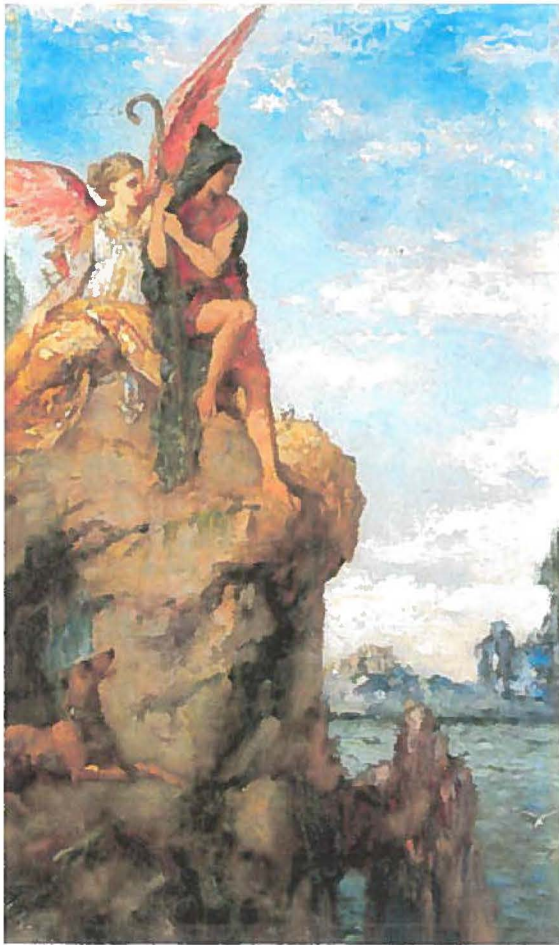
General Lecture on  
Thursdays:  
11:10 - 12:00 ULH or

7:10 - 8:00 pm SS  
352

**K. Wiering**

[kwiering@selway.umt.edu](mailto:kwiering@selway.umt.edu)

LA 332; 243-5791



The Muse inspires Hesiod on a precipice.  
View this and other paintings by Moreau at [artrenewal.org](http://artrenewal.org)

### *Class Schedule*

### **DESCRIPTION**

This course is an introduction to the humanities through literature, in particular through works that best represent the ancient period. We have culled a good selection of texts that traditionally forms the subject matter of the classics, a subject spanning nearly ten centuries of ancient literature written in Greek and Latin. Insofar as the Judaic tradition has influenced this, selections from the Old and New Testaments are included in our readings. Each of these diverse texts address the fundamental aspects of our human condition: questions about our place in the world, perspectives on civilization, its progress (or regress), the gods and divine agency, reactions to determinism and human freedom, contests with fate, the struggle for life against death, violence, and the enigma of love.

*This course fulfills the Lower Division Writing Requirement.*

*Course Texts*  
*Requirements*  
*View Other Courses*

University of Montana  
Department of Foreign Languages and Literatures  
Classics

---

*To Class Schedule*

**LS 151**  
Fall 2003  
MWF 9:10 - 10:00

**K. Wiering**  
[kwiering@selway.umt.edu](mailto:kwiering@selway.umt.edu)  
LA 332; 243-5791

***REQUIREMENTS***

(a) **readings** The schedule of readings follows the plenary lecture schedule. The readings the focus of the lecture and discussions and students are required to have the designated portion read before class and to be prepared for discussion of the text.

(b) **class participation** Participation will earn 25% of your grade. Participation includes timely submission of assignments, preparation of the assigned reading material, readiness for in-class questions and discussion, and attendance.

(c) **writing** To fulfill the [writing component](#), select questions that arise from class discussion or lectures will be used as topics for a weekly 1-2 page essay. This activity is a developmental exercise, and intended to help you in the practice of thinking through writing. Revisions are encouraged and no grade is final until the semester's end. Details and guidelines are given in class.

(d) **examinations** Three exams are scheduled (see [schedule](#)). Exams will follow the character of the course, testing your general knowledge with true/false, fill-in-the blank, matching, and short answer. Your ability to handle the pertinent issues behind the facts will be demonstrated with an extended essay. Questions in the exams may involve information from any of our readings during the semester.

***GRADING***

		90 - 100	A
Class participation,		80 - 89	B
writing assignments	25%	70 - 79	C
Exam #1	25%	60 - 69	D
Exam #2	25%	0 - 59	F
Final Exam	25%		

***OFFICE HOURS***

I will be [available](#) (LA 332) for questions or difficulties of any kind before class or by scheduled appointment. Send questions via [e-mail](#) if you get stuck while doing homework.

University of Montana  
Department of Foreign Languages and Literatures  
Classics

---

## Introduction to the Humanities

**WEEK ONE Sep. 3 - 5**

WED 3

THU 4

[Plenary Lecture: "Genesis"](#)

FRI 5

Read: Genesis 1-22

**WEEK TWO Sep. 8 - 12**

MON 8

WED 10

THU 11

[Plenary Lecture: "Law and the Prophets"](#)

FRI 12

**WEEK THREE Sep. 15 - 19**

MON 15

WED 17

THU 18

[Plenary Lecture: "Job and Wisdom"](#)

FRI 19

**WEEK FOUR Sep. 22 - 26**

MON 22

WED 24

THU 25

[Plenary Lecture: "Greek Civilization and the \*Odyssey\*"](#)

FRI 26

**WEEK FIVE Sep. 29 - Oct 3**

MON 29

WED 1

THU 2

[Plenary Lecture: "Hero and Antihero in Homer"](#)

FRI 3

**WEEK SIX Oct. 6 - 8**

MON 6

WED 8

THU 9

[Plenary Lecture: "Greek Lyric"](#)

FRI 10

**WEEK SEVEN Oct. 13 - 17**

MON 13

WED 15

THU 16

[Plenary Lecture: "Greek Drama"](#)

FRI 17

**WEEK EIGHT Oct. 20 - 24**

MON 20  
 TUE 21  
 WED 22  
 THU 23 [Plenary Lecture: "Plato and Greek Philosophy"](#)  
 FRI 24  
**WEEK NINE Oct. 27 - 31**  
 MON 27  
 WED 29  
 THU 30 [Plenary Lecture: "The Hellenistic Era"](#)  
 FRI 31  
**WEEK TEN Nov. 3 - 7**  
 MON 3  
 WED 5  
 THU 6 [Plenary Lecture: "Roman History Overview"](#)  
 FRI 7  
**WEEK ELEVEN Nov. 10 - 14**  
 MON 10  
 WED 12  
 THU 13 [Plenary Lecture: "The Gospels"](#)  
 FRI 14  
**WEEK TWELVE Nov. 17 - 21**  
 MON 17  
 WED 19  
 THU 20 [Plenary Lecture: "The Letters of Paul \(Romans\)"](#)  
 FRI 21  
**WEEK THIRTEEN Nov. 24 - 28**  
 MON 24  
 WED 26 Thanksgiving Holiday  
 THU 27 Thanksgiving Holiday  
 FRI 28 Thanksgiving Holiday  
**WEEK FOURTEEN Dec. 1 - 5**  
 MON 1  
 WED 3  
 THU 4 [Plenary Lecture: "Augustine's Confessions"](#)  
 FRI 5  
**WEEK FIFTEEN Dec. 8 - 12**  
 MON 8  
 WED 10  
 THU 11 [Plenary Lecture: "Roman and Early Christian Art"](#)  
 FRI 12  
**FINALS WEEK Dec. 15 - 19**  
  
 FINAL EXAM, Dec. 16, 1:10 - 3:10