

University of Montana

## ScholarWorks at University of Montana

---

University of Montana Conference on Undergraduate Research (UMCUR)

---

Apr 28th, 11:40 AM - 12:00 PM

### Fostering Global Citizens: Using Technology to Improve Intercultural Competence Among Study Abroad Students

Hanna Ziegler

*University of Montana, Missoula, hanna.ziegler@umontana.edu*

Nicole Musci

*University of Montana, Missoula, nicole.musci@umontana.edu*

Megan Allen

*University of Montana, Missoula, megan1.allen@umontana.edu*

Megan Giddings

*University of Montana, Missoula, megan.giddings@umontana.edu*

Tessa Feemster

*University of Montana, Missoula, tessa.feemster@umontana.edu*

*See next page for additional authors*

Follow this and additional works at: <https://scholarworks.umt.edu/umcur>

## Let us know how access to this document benefits you.

---

Ziegler, Hanna; Musci, Nicole; Allen, Megan; Giddings, Megan; Feemster, Tessa; Smithgall, Max; and Kamplain, Annalea, "Fostering Global Citizens: Using Technology to Improve Intercultural Competence Among Study Abroad Students" (2017). *University of Montana Conference on Undergraduate Research (UMCUR)*. 4.

<https://scholarworks.umt.edu/umcur/2017/gli/4>

This Presentation is brought to you for free and open access by ScholarWorks at University of Montana. It has been accepted for inclusion in University of Montana Conference on Undergraduate Research (UMCUR) by an authorized administrator of ScholarWorks at University of Montana. For more information, please contact [scholarworks@mso.umt.edu](mailto:scholarworks@mso.umt.edu).

---

## Presenter Information

Hanna Ziegler, Nicole Musci, Megan Allen, Megan Giddings, Tessa Feemster, Max Smithgall, and Annalea Kamplain



# Fostering Global Citizens

Using Technology to Improve Intercultural  
Competence Among Study Abroad Students

UMCUR April 28, 2017



How **IMPROVE**  
can we  
**intercultural**  
**competence**  
in UM students?



# Creating the Survey

## Food

Is tipping customary at restaurants/bars? If so, what percentage?

Your answer \_\_\_\_\_

In general, how do prices of food (in grocery stores, at restaurants) compare to prices in the U.S.?

- Food is generally more expensive than in the US
- Food is generally less expensive than in the US
- Food costs about the same
- Other: \_\_\_\_\_

## Transportation

What forms of public transportation are available? Check all that apply.

- Bus
- Train
- Subway
- Taxi
- Bicycles
- Other: \_\_\_\_\_

How much money would you recommend budgeting for transportation?

Your answer \_\_\_\_\_

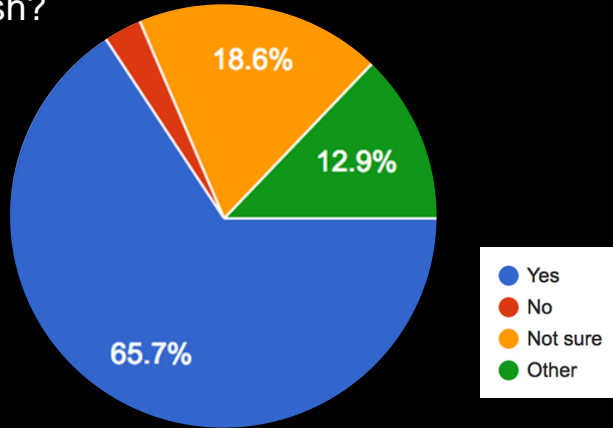
## Academics

What differences did you encounter in the academic structure between the foreign school and schools in the U.S.? (i.e. exams, homework assignments, grading scale, teaching style, etc.)

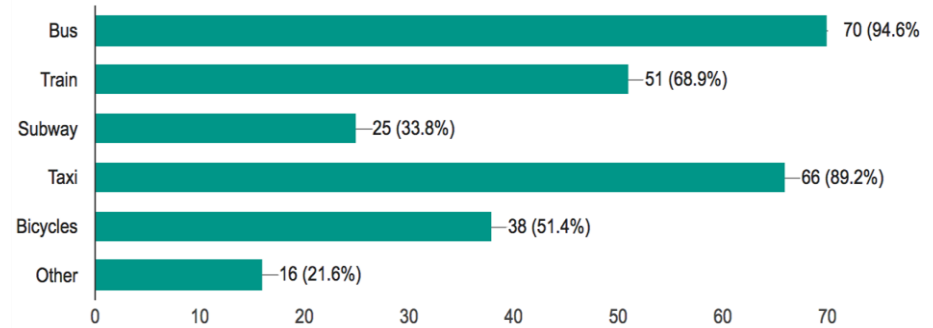
Your answer \_\_\_\_\_

# Survey Responses:

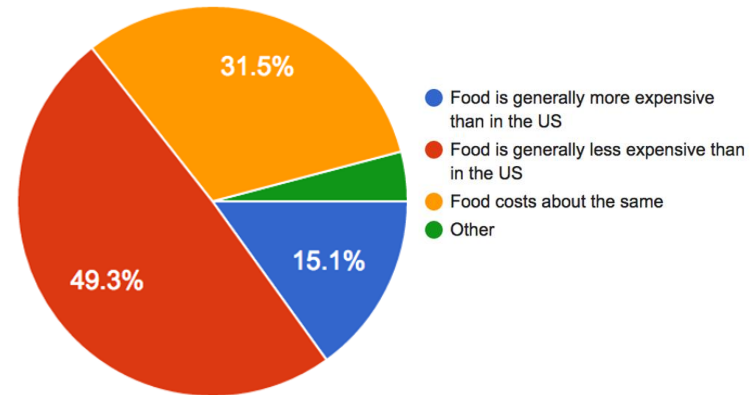
Does this university offer classes in English?



What forms of public transportation are available?  
Check all that apply.



In general, how do prices of food (in grocery stores, at restaurants) compare to prices in the U.S.?





*Q: Are there certain areas of town that you would recommend to live in? What is the overall quality of housing?*

**A:** “I would definitely recommend living in the city center. Look for a flat in or around “el centro historico.” This area is full of shops, restaurants, clubs, and is close to the beach! The main university campus is located in Teatinos, which is slightly out of town, but I would **avoid living in the dorms** or flats located there because it can be very isolated and there is not a lot to do. The buses go from the city center to Teatinos, so it is easy to access campus from the city center!”



*Q: What differences did you encounter in the academic structure between the foreign school and schools in the U.S.? (exams, homework assignments, grading scale, teaching style, etc.)*

A: “... Don't get too caught up about the differences and the challenges they pose. If you just accept the way the system is, you'll be able to enjoy your time better and not stress about school as much.

**Talk to your professors early on** to make sure you and they know what you need to do to earn 6ECTS points (3 credits for a class here).

**Establishing this early on will make everything easier.”**



Real Student Experiences  
+ Accessible Technology  
= UM Study Abroad App



Add Widget

Reset Dashboard

## History

- Mobile - Study Abroad:default
- Mobile - Study Abroad:content/spain
- Mobile - Study Abroad:content/argentina
- Mobile - Study Abroad:content
- Mobile - Study
- Abroad:content/spain/default
- Mobile - Study Abroad:content/spain
- Mobile - Study
- Abroad:content/spain/default
- Mobile - Study Abroad:...niversidad de Malaga
- Mobile - Study Abroad:...iversidad de Granada
- Mobile - Study Abroad:...niversidad de Malaga

[View entire history](#)

## New Content

- No **Starting Page** is configured for your user in the global area.
- No default **Content Wizards** are available for your user in the global area.

## Content to Review

## Needs Review In next 14 days

No assets with review dates.

- Past Due (0)
- Upcoming (0)
- Scheduled (0)

## Stale Content

## Last Updated 60 or more days ago

No assets with modified dates.

- Stale (0)
- Fresh (0)

## Messages

- Publish of Page 'Mobile - Study Abroad:content/spain/menu-item' completed (0 issue(s))**
- Publish of Page 'Mobile - Study Abroad:default' completed (0 issue(s))**
- Publish of Folder 'Mobile - Study Abroad:content/spain' completed (0 issue(s))**
- Un-publish of Folder 'Mobile - Study Abroad:content/spain 1' completed (0 issue(s))**

[View all 14 messages](#)

## Drafts

You have no drafts

## Locked Assets

You have no locked assets

## Workflows

You have no active workflows



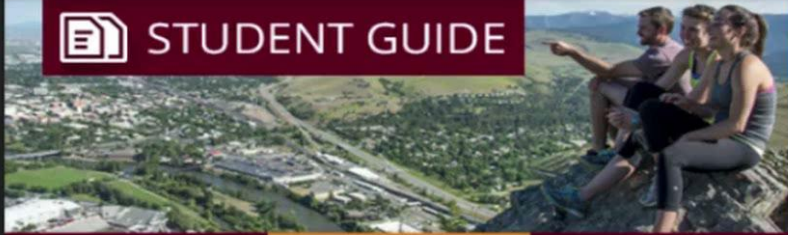
Who has access?



UMontana



STUDENT GUIDE



MOODLE



EVENTS



CANDIDATE PROFILES



MAP



FOOD ZOO



EMPLOYEE DIRECTORY



Find your advisor



SETUP EMAIL



UDASH TRANSIT



HEALTH PORTAL



STUDY ABROAD



FINAL GRADES



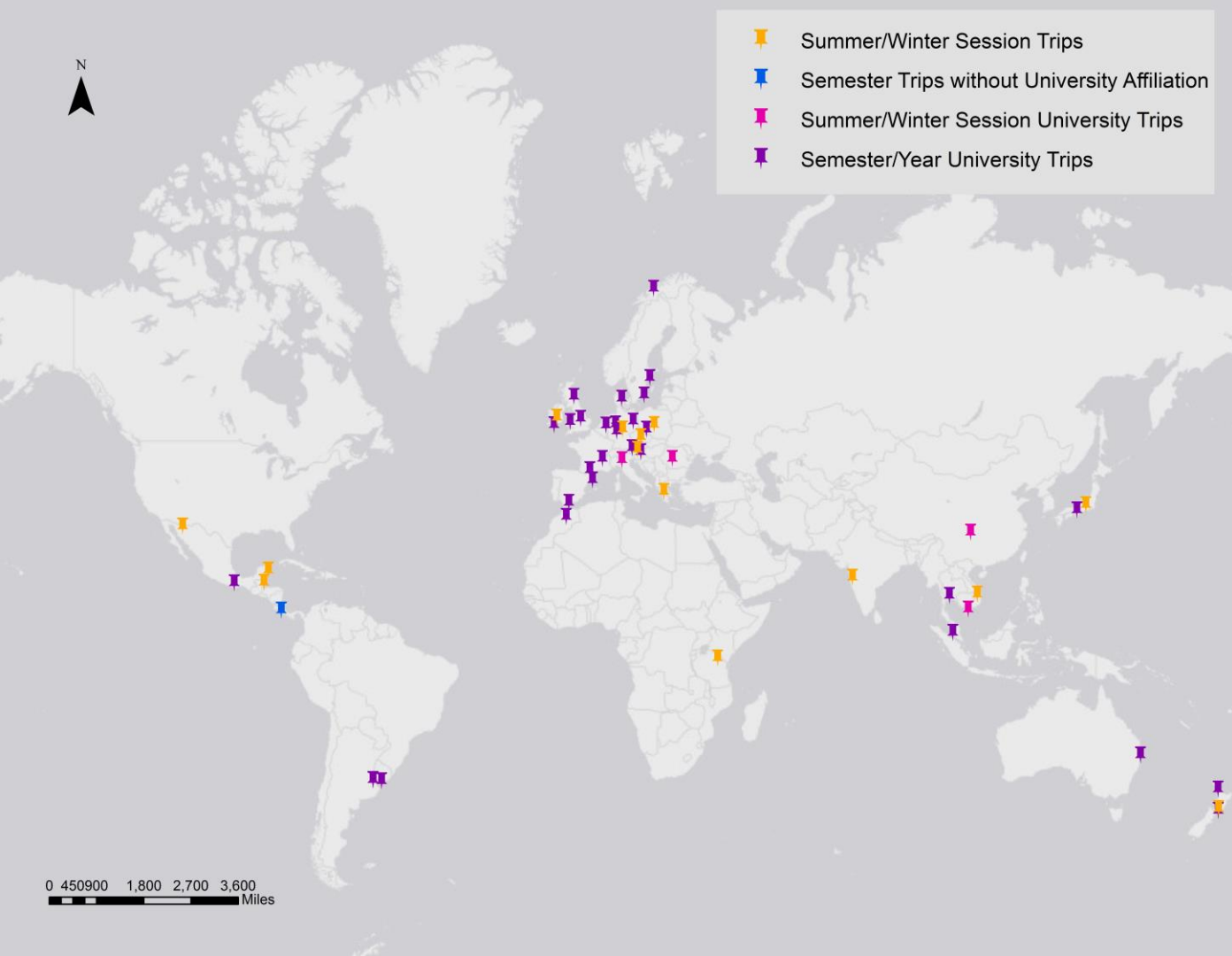
STUDENT

# Implications for the University of Montana





- Summer/Winter Session Trips
- Semester Trips without University Affiliation
- Summer/Winter Session University Trips
- Semester/Year University Trips



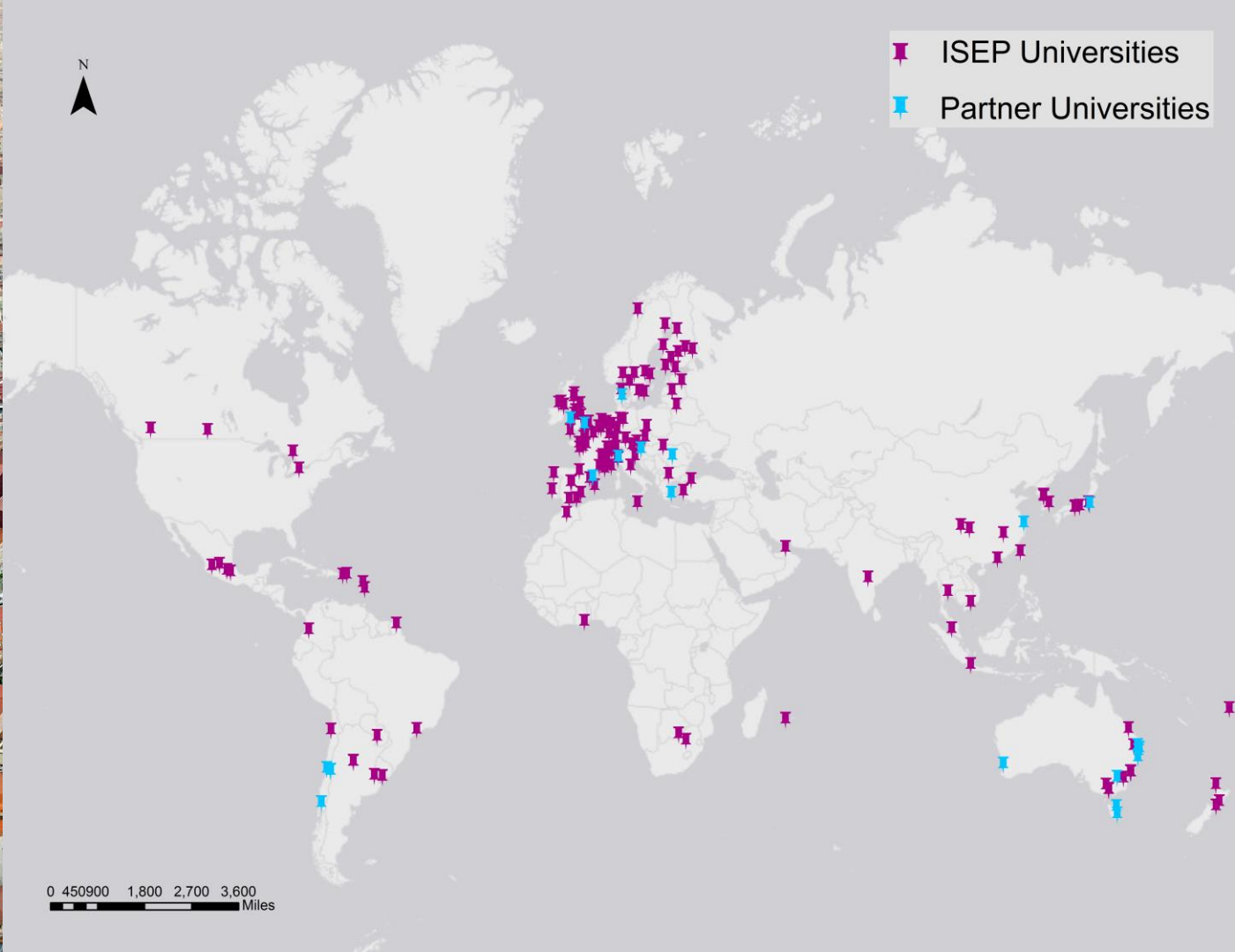
0 450900 1,800 2,700 3,600 Miles



# SURVEY RESULTS



# Partner & ISEP UNIVERSITIES

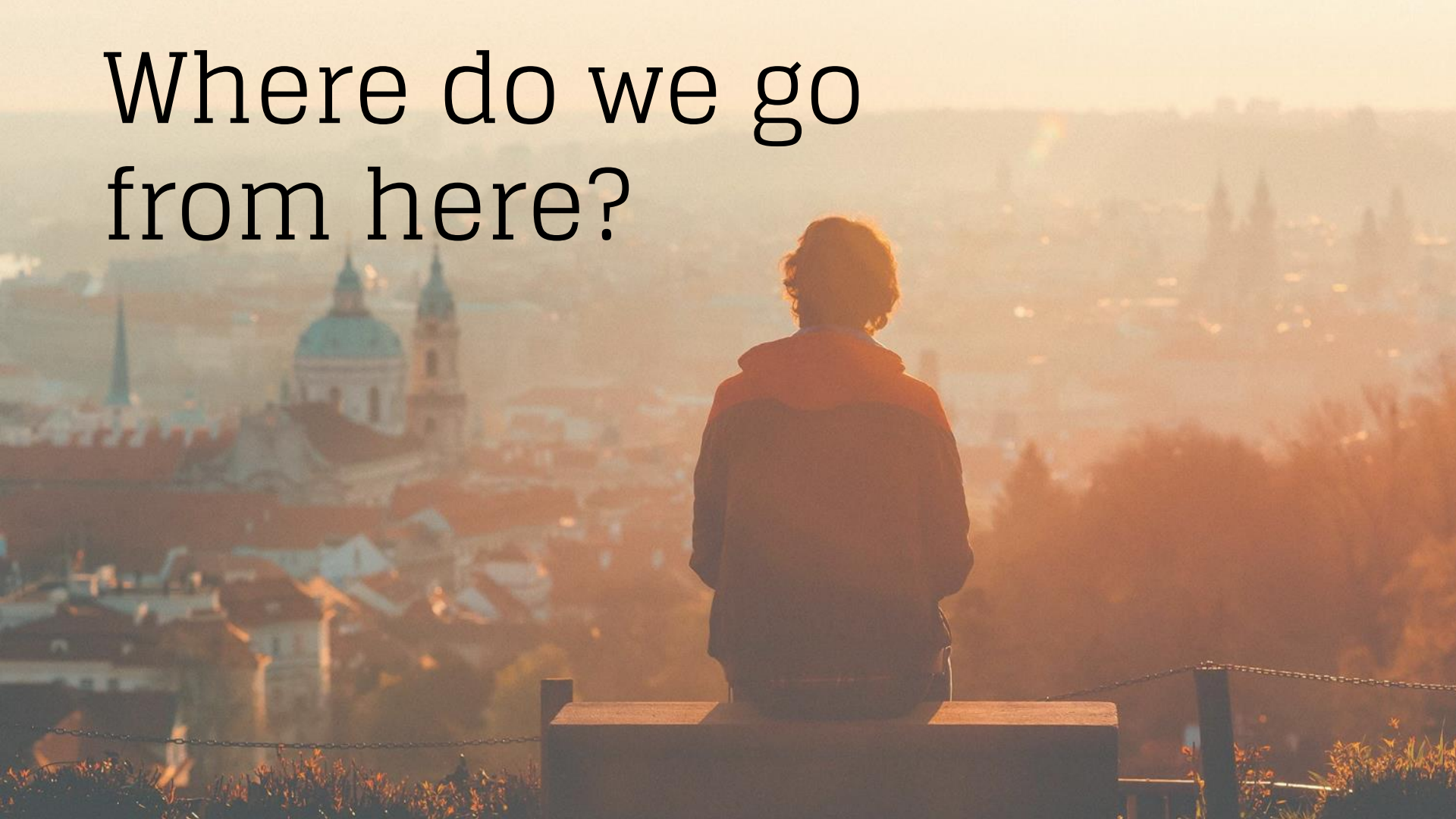


- ISEP Universities
- Partner Universities

0 450 900 1,800 2,700 3,600 Miles



Where do we go  
from here?



An aerial photograph of a vast mountain range with snow-capped peaks and deep valleys. In the foreground, the white wing and red tail of an airplane are visible, flying over the landscape. The sky is a clear, pale blue.

# THANK YOU

We appreciate the support and the dedication of the following:

**Franke Global Leadership Initiative**

**Johan Eriksson, Faculty Mentor**

**Nick Shontz, Web Technology Services Manager**

**Bodhi Murphy, Education Abroad Coordinator**

**Paul Gladen, Blackstone LaunchPad**

**Simona Stan, Marketing Research Professor**

**Survey Participants**