

University of Montana

ScholarWorks at University of Montana

Numerical Terradynamic Simulation Group
Publications

Numerical Terradynamic Simulation Group

5-2013

Future humidity trends over the western United States in the CMIP5 global climate models and variable infiltration capacity hydrological modeling system

D. W. Pierce

A. L. Westerling

Jared Wesley Oyler

The University of Montana

Follow this and additional works at: https://scholarworks.umt.edu/ntsg_pubs

Let us know how access to this document benefits you.

Recommended Citation

Pierce, D. W., Westerling, A. L., and Oyler, J.: Future humidity trends over the western United States in the CMIP5 global climate models and variable infiltration capacity hydrological modeling system, *Hydrol. Earth Syst. Sci.*, 17, 1833-1850, doi:10.5194/hess-17-1833-2013, 2013.

This Article is brought to you for free and open access by the Numerical Terradynamic Simulation Group at ScholarWorks at University of Montana. It has been accepted for inclusion in Numerical Terradynamic Simulation Group Publications by an authorized administrator of ScholarWorks at University of Montana. For more information, please contact scholarworks@mso.umt.edu.



Future humidity trends over the western United States in the CMIP5 global climate models and variable infiltration capacity hydrological modeling system

D. W. Pierce¹, A. L. Westerling², and J. Oyster³

¹Division of Climate, Atmospheric Science, and Physical Oceanography, Scripps Institution of Oceanography, La Jolla, CA, USA

²Sierra Nevada Research Institute, University of California, Merced, USA

³Numerical Terradynamic Simulation Group, University of Montana, Montana, USA

Correspondence to: D. W. Pierce (dpierce@ucsd.edu)

Received: 16 November 2012 – Published in Hydrol. Earth Syst. Sci. Discuss.: 12 December 2012

Revised: 29 March 2013 – Accepted: 19 April 2013 – Published: 14 May 2013

Abstract. Global climate models predict relative humidity (RH) in the western US will decrease at a rate of about 0.1–0.6 percentage points per decade, albeit with seasonal differences (most drying in spring and summer), geographical variability (greater declines in the interior), stronger reductions for greater anthropogenic radiative forcing, and notable spread among the models. Although atmospheric moisture content increases, this is more than compensated for by higher air temperatures, leading to declining RH. Fine-scale hydrological simulations driven by the global model results should reproduce these trends. It is shown that the MT-CLIM meteorological algorithms used by the Variable Infiltration Capacity (VIC) hydrological model, when driven by daily T_{\min} , T_{\max} , and precipitation (a configuration used in numerous published studies), do not preserve the original global model's humidity trends. Trends are biased positive in the interior western US, so that strong RH decreases are changed to weak decreases, and weak decreases are changed to increases. This happens because the MT-CLIM algorithms VIC incorporates infer an overly large positive trend in atmospheric moisture content in this region, likely due to an underestimate of the effect of increasing aridity on RH. The result could downplay the effects of decreasing RH on plants and wildfire. RH trends along the coast have a weak negative bias due to neglect of the ocean's moderating influence. A numerical experiment where the values of T_{dew} are altered to compensate for the RH error suggests that eliminating the atmospheric moisture bias could, in and of itself, decrease

runoff up to 14 % in high-altitude regions east of the Sierra Nevada and Cascades, and reduce estimated Colorado River runoff at Lees Ferry up to 4 % by the end of the century. It could also increase the probability of large fires in the northern and central US Rocky Mountains by 13 to 60 %.

1 Introduction

The Earth's climate is warming due to the accumulation of human-produced greenhouse gases in the atmosphere (IPCC, 2007). Over the oceans, warmer surface temperatures will likely lead to increased evaporation and therefore greater specific humidity, but an approximately constant relative humidity (RH); the greater concentration of water vapor will in turn warm the surface further, since water vapor is a potent greenhouse gas (GHG) (e.g., IPCC, 2007; Dessler and Sherwood, 2009). This feedback mechanism depends on warmer planetary temperatures leading to increased atmospheric water vapor concentrations, which has already been identified in satellite observations (Santer et al., 2007) and surface humidity measurements (Willett et al., 2007).

It seems unlikely that RH will remain constant in locations far from large open bodies of water and where annual evaporative demand considerably exceeds annual precipitation, such as the arid regions of the western US. In such areas, warmer surface temperatures, along with limited moisture availability, may lead to lower relative humidities in the

future than are experienced today. This could have an effect on hydrological and ecological processes that are sensitive to humidity, such as evapotranspiration (Friend, 1995), runoff, wildfire (Brown et al., 2004), and plant growth (Leuschner, 2002). Irrigation can increase surface relative humidity locally (Kueppers et al., 2007), but we do not include the effects of irrigation in this work.

A large number of studies have examined changes in the hydrology of the western US and related processes using the Variable Infiltration Capacity (VIC) hydrological model (Liang et al., 1994). Hydrological processes are strongly influenced by topography, so VIC is often run with a resolution of $1/8 \times 1/8^\circ$ (longitude by latitude) or finer. Even with the increasing resolution of global climate models, which can approach $1/2$ by $1/2^\circ$, VIC runs are likely to be used for hydrological applications for a considerable time yet. VIC can also easily be run over a limited area, increasing efficiency further.

VIC is a well-regarded model (Liang et al., 1994) has been cited nearly 600 times according to the Thomson Reuters Web of Knowledge) that does a good job of simulating historical changes in streamflow when driven with historical meteorology (e.g. Abdulla and Lettenmaier, 1997; Hamlet and Lettenmaier, 1999b; Arnell, 1999; Nijssen et al., 2001b; Wang et al., 2008; Niu and Chen, 2009), and has been used extensively both in the region and globally. For example, Hamlet and Lettenmaier (1999a) used VIC for forecasting Columbia River streamflow based on the patterns of climate variability; Nijssen et al. (2001a) examined the sensitivity of global river flow to climate change; and VanRheenen et al. (2004) used VIC and downscaled global climate model simulations to study changes in flow in the Sacramento and San Joaquin basins. Christensen et al. (2004) and Christensen and Lettenmaier (2007) did similar analyses for the Colorado River basin, while Hayhoe et al. (2004) examined future changes in California water resources. Westerling et al. (2006), Westerling and Bryant (2008), and Westerling et al. (2011) used VIC simulations to help understand historical trends and future projections in wildfire activity, and Hamlet and Lettenmaier (2007) did a similar analysis for runoff, evapotranspiration, and soil moisture. Maurer (2007) examined runoff over the Sierra Nevada; Barnett et al. (2008) and Pierce et al. (2008) used VIC to study changes in runoff, streamflow, and snowpack over the western US; and Adam et al. (2009) examined impacts on snowpack globally. VIC has been used for a wide variety of purposes in many locations.

The studies enumerated above are driven by daily minimum temperature, maximum temperature, and precipitation (T_{\min} , T_{\max} , and P). Often, these fields are derived from monthly global climate model output that has been resampled to a daily timescale using a statistical downscaling technique (Wood et al., 2004), although statistically downscaled daily global model data has been used as well (Hidalgo et al., 2008). Wind speed is another required input field, and is sometimes specified using climatological values (e.g.,

from Maurer (2002)), since statistical downscaling procedures have typically not yet been tested with wind speed.

The hydrological simulation needs additional meteorological variables, such as humidity and incoming shortwave radiation. Since these are relatively sparsely observed, VIC incorporates algorithms taken from the MT-CLIM version 4.2 package (Hungerford et al., 1989; Thornton and Running, 1999; Thornton et al., 2000; see also Maurer, 2002) to calculate these fields from T_{\min} , T_{\max} , and P . A global evaluation of the MT-CLIM algorithms can be found in Bohn et al. (2013). Henceforth we will call this combination of the VIC hydrological model and the MT-CLIM meteorological algorithms the VIC modeling system (VMS). We introduce this terminology to emphasize the distinction between VIC (the hydrological component of the system) and the entire modeling package that enables hydrological simulations to be computed from a given set of meteorological fields. Note, however, that the references given above do not draw this distinction, and commonly identify hydrologic simulations derived using the MT-CLIM algorithms and VIC as “VIC” simulations.

Checking VMS’s ability to simulate humidity changes is important given the large number of published climate change studies that have analyzed streamflow or runoff using this approach. Results from VIC have informed our understanding of the effects of climate change on runoff, streamflow, wildfire, and snowpack in the western US and around the world, and could potentially influence key resource, policy, or adaptation decisions.

VIC uses humidity when calculating the incident solar radiation (along with solar angle, elevation, slope, etc.) and evaporation from bare soil. Additionally, when the relative humidity drops, modeled stomatal resistance to transpiration in plants increases; this effect is observed in nature and included in VIC’s parameterizations. Under high relative humidity conditions the model includes the possibility of condensation and dew formation on the ground, which increases the soil moisture, but this is a small term and in most places represents a negligible contribution to the soil moisture budget.

The MT-CLIM meteorological algorithms as incorporated in VMS assume that the dew point temperature, T_{dew} , is closely related to nighttime minimum temperature. Although T_{dew} is not an ideal proxy for atmospheric moisture content because it depends in part on atmospheric pressure (and thus elevation) and is nonlinearly related to moisture content, it nevertheless is a good moisture indicator and has the advantage that it is more commonly observed at stations than other humidity variables (Robinson, 1998; Brown and DeGaetano, 2009). In coming decades T_{\min} will increase at least partly due to greater concentrations of CO_2 and other non-water vapor GHGs, yet VMS equates an increase in T_{\min} with an increase in humidity. There is a danger that VMS may over-predict T_{dew} increases as a result.

In humid regions the assumption that T_{\min} equals T_{dew} is supported by observations, especially in clear and calm conditions (Brown and DeGaetano, 2009). However in arid regions (such as much of the western US), the dew point is often lower than T_{\min} . Accordingly, the meteorological algorithms in VMS incorporate a correction to the T_{dew} calculation suggested by Kimball et al. (1997) (Kimball-97 hereafter), which takes into account the local aridity. The Kimball-97 T_{dew} correction is empirical in nature, being based on a polynomial fit to observations. It might therefore become a progressively worse approximation as anthropogenically produced greenhouse gases alter the radiation balance of the planet.

A number of recent studies have focused on current and future humidity trends. Much of this work has explored the dynamics and thermodynamics of humidity changes in the atmosphere (e.g., Sherwood et al., 2010; Schneider et al., 2010; Seager et al., 2010; Wright et al., 2010). Other, observationally based work has examined changes in surface relative humidity. Gaffen and Ross (1999) found that relative humidity increased in the northern interior US from 1961–1995, but slightly (non-significantly) decreased during summer and autumn in the southwest. Dai (2006) analyzed global weather reports from 1976 to 2004 and found RH increases in the northern part of the western US on into Canada, and decreases in the southern part, similar to Gaffen and Ross (1999). On the other hand, Willett et al. (2007) found RH declines in this entire region over the period 1973–2003, although the trends were small and statistical significance was not indicated. Vincent et al. (2007), analyzing station data over the period 1953–2005, found generally negative but not statistically significant RH changes in the interior western part of Canada, roughly in accord with Willett et al. (2007). Robinson (2000) found more complicated patterns in T_{dew} trends that depended on season and time of day.

The purpose of this work is to show projections of future humidity changes over the western US from the new CMIP5 (Taylor et al., 2012) set of global climate models, how the trends are misestimated by VMS, and the implications this has for future runoff changes. We start with a description and evaluation of the performance of VMS's humidity simulation given historical observations of T_{\min} , T_{\max} , and P (Sect. 2). We then show future changes in surface RH over the western US projected by global climate models (Sect. 3.1), and evaluate how well these changes are captured by VMS when it is driven by T_{\min} , T_{\max} , and P from the global model simulations (Sect. 3.2). Global climate model fields are often bias corrected and/or downscaled before being used to drive a hydrological model, so we examine the effect of those processes on the RH trends as well. We additionally run a test simulation with VMS to see what effect the humidity errors might have on runoff (Sect. 4). A summary discussion and conclusions are given in Sect. 5.

2 Estimating humidity from temperature and precipitation

Our primary interest is in future RH trends, which are determined by both air temperature and atmospheric moisture content trends. VMS is supplied with air temperatures, but must estimate atmospheric moisture content, so any errors in the RH field that can be attributed to VMS must arise from errors in atmospheric moisture content. VMS' atmospheric moisture content algorithms estimate T_{dew} , and T_{dew} is available from meteorological stations, so it is a natural choice for comparing to observations.

The following terminology will be used to describe the T_{dew} calculation. The *input variables* that the meteorological algorithms in VMS use are daily T_{\min} , T_{\max} , and P , which need to be supplied from an external source such as observations or a global climate model. The Kimball-97 algorithm is a function of three *parameters*, which are EF , DTR, and T_{\min} . In Kimball-97's original formulation, EF is the non-dimensional ratio of daily potential evapotranspiration (PET) to annual precipitation, and so is a measure of aridity (higher values mean greater aridity). DTR is the diurnal temperature range, $T_{\max} - T_{\min}$. Finally, T_{\min} is both an input variable and a parameter.

VMS converts the three input variables into the three parameters required by Kimball-97 using the MT-CLIM algorithms (Hungerford et al., 1989; Thornton and Running, 1999; Thornton et al., 2000). The conversion of T_{\min} and T_{\max} into DTR is trivial, and of course T_{\min} is used without conversion. EF is computed by first estimating PET using the Priestley–Taylor equation (Priestley and Taylor, 1972), then dividing by annual P . Of course, the Priestley–Taylor PET estimates themselves use the simplified radiation estimates derived from T_{\min} and T_{\max} , so estimated PET likely has errors that subsequently contribute to errors in EF . The version of the MT-CLIM algorithms used in VMS employ a modified version of Kimball-97's T_{dew} correction that computes EF using the annualized precipitation over the past N days rather than the annual precipitation (i.e., using $[P$ summed over the last N days] \times [days per year/ N]). Additionally, the annualized precipitation is not allowed to drop below a minimum value, P_{\min} . This introduces two new parameters: N (default: 90 days) and P_{\min} (default: 8 cm). Below it will be shown that this modification has a detrimental effect on the simulation of T_{dew} in Mediterranean coastal locations such as central and southern California. The VMS input files allow one to specify each grid cell's annual average P , but this specified value is not used in the humidity calculation in versions of VMS released since late 2004 (we do not have access to earlier versions).

2.1 Kimball et al.'s T_{dew} parameterization

The Kimball-97 empirical T_{dew} parameterization is an important part of the VMS humidity calculation. Following their

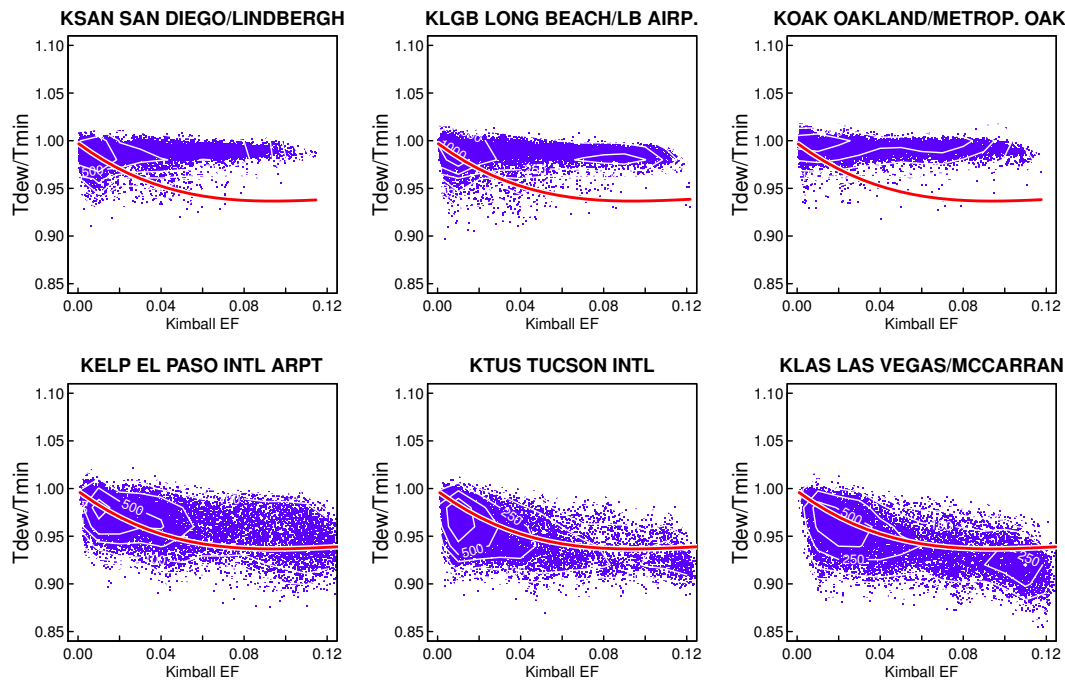


Fig. 1. Dots: observed ratio of $T_{\text{dew}}/T_{\text{min}} - 0.0006 \text{ DTR}$ (in $^{\circ}\text{K}$, where DTR is the diurnal temperature range) as a function of the EF aridity parameter from Kimball et al. (1997). The red line shows the correction suggested in that work. White contours show the density of blue dots in each 0.01×0.02 gridbox; contours are drawn at 10, 25, 50, 100, 250, and 500.

Eq. (4):

$$\frac{T_{\text{dew}}}{T_{\text{min}}} - 0.0006 \text{ DTR} = -0.127 + 1.121 \left(1.003 - 1.444 EF + 12.312 EF^2 - 32.766 EF^3 \right) \quad (1)$$

where temperatures are in Kelvin, DTR is that day's diurnal temperature range and EF is the dimensionless ratio of that day's potential evapotranspiration to annual precipitation (in VMS, to 90-day annualized precipitation subject to a minimum of 8 cm). Figure 1 shows observed daily values of the left-hand side of Eq. (1) (dots) as a function of EF for 6 selected stations, 3 along the west coast and 3 in the arid continental interior. Also shown (line) is the right hand side of Eq. (1), i.e., the Kimball-97 suggested correction to T_{dew} as a function of aridity. The detrimental nature of the suggested correction in locations influenced by the marine environment is obvious. In places such as San Diego, Long Beach, and Oakland, even during days of high evaporative demand (large EF), the essentially infinite moisture source of the ocean keeps $T_{\text{dew}}/T_{\text{min}}$ near 1. This is expected, but not captured in the correction. MT-CLIM exhibits errors in downward shortwave radiation in the coastal environment as well (Bohn et al., 2013).

Perhaps more surprising is that even in the dry interior, the suggested correction, which is cubic in EF , is inferior to a simpler linear fit. The r^2 values for the Kimball-97 fits in Fig. 1 are 0.04, 0.01, and 0.18 for El Paso, Tucson, and

Las Vegas, respectively, while the r^2 values for a linear fit are 0.24, 0.30, and 0.40. This is seen at many locations, not just those shown in Fig. 1. Also, Kimball-97's parameterization consistently overestimates T_{dew} at $EF=0$, which may arise from a requirement that T_{dew} equals T_{min} when EF equals 0. Such a requirement is not supported by the data shown in Fig. 1, or more generally in data from the other western US stations used here. However, it should be noted that data from humid east coast locations was not examined, and could display different characteristics.

Figure 1 suggests that the T_{dew} correction could be improved straightforwardly. The correction could be recast to a linear fit in EF . The endpoint at $EF=0$ could be allowed to take on a value other than exactly 1.0, consistent with the observations. And instead of the cubic coefficient, which is not required if a linear correction is used instead, a new parameter could be introduced that would reflect whether or not the location was influenced by the marine environment. For example, the distance to the oceans, or even a simple binary flag for coastal vs. continental environment. Such improvements in the algorithm would be particularly valuable when using VMS in coastal regions.

2.2 Performance of the humidity algorithm in the western US

In this section the ability of VMS to estimate humidity (specifically, T_{dew}) across the western US will be evaluated

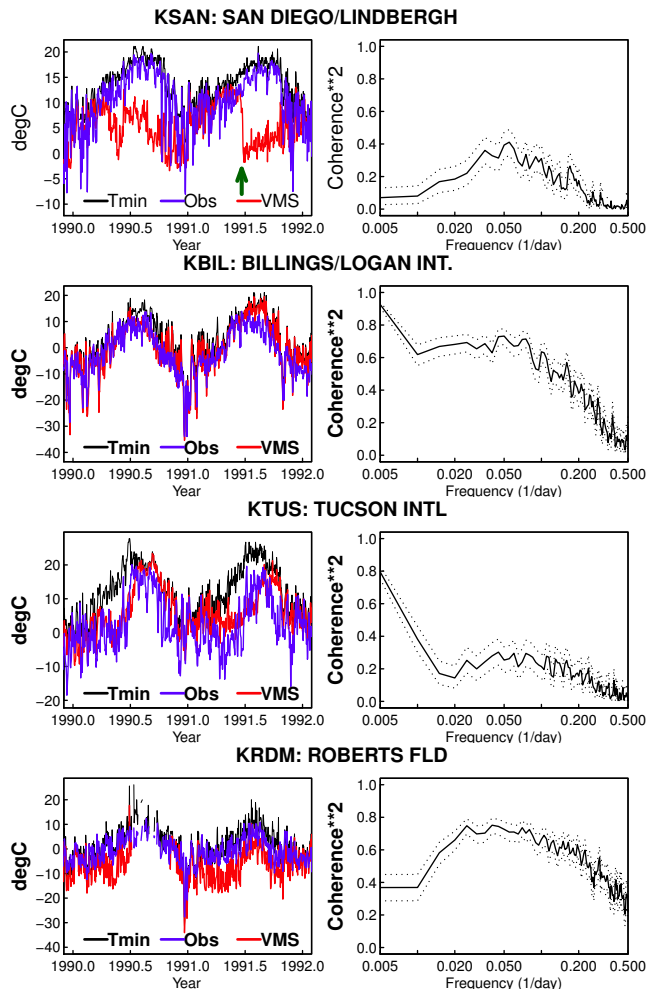


Fig. 3. For a selection of 4 stations: left column shows T_{dew} from observations (blue) over the period 1990–1991, T_{dew} calculated by VMS (red), and T_{min} for comparison (black). The green arrow shows where there has been little precipitation for the last 90 days at KSAN, triggering a change in the humidity calculation; see text for details. Right column shows the squared coherence between the observed and modeled T_{dew} as a function of frequency (per day), along with the 95 % confidence interval (dotted lines).

estimation algorithm at any frequency, and at the longer time scales (> 50 days), less than 20 % of the variance is captured. Only in Billings does the explained variance both generally exceed 50 % and reach a peak at the lowest frequencies. This illustrates some of the timescale-dependent deficiencies in the T_{dew} calculation.

The mean bias in the estimation of T_{dew} is shown in Fig. 4, and the RMS error in Fig. 5. In summer and autumn the errors are largest along the western coast and smaller in the interior, a geographical distinction also found in the T_{dew} cluster analysis of Robinson (1998). Both the bias and RMSE are largest in the southwestern part of the domain, roughly in the Mediterranean climate regimes of California. The bias is

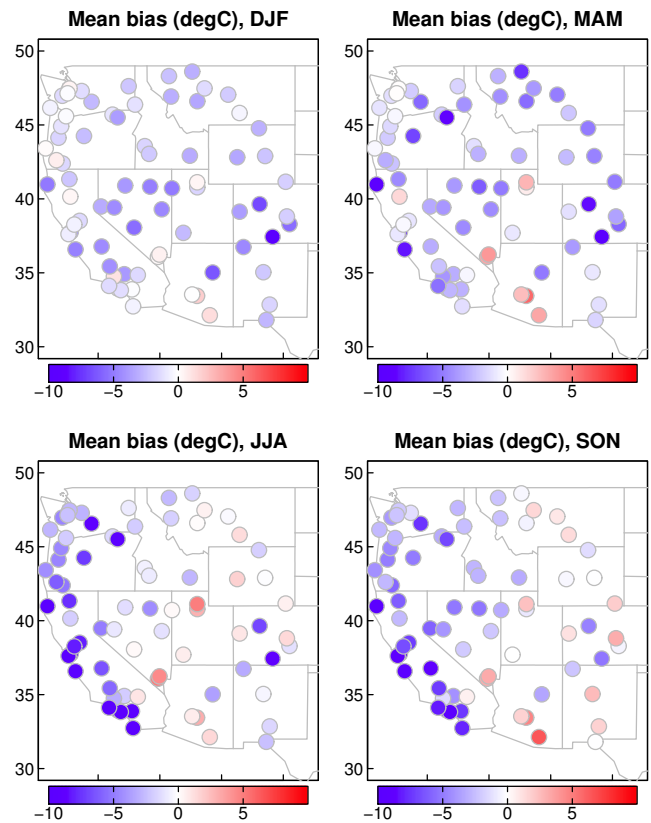


Fig. 4. Mean value of T_{dew} estimated by VMS minus T_{dew} from observations ($^{\circ}\text{C}$) at the meteorological stations, by season. The period covered is 1975–2009.

overwhelmingly negative, i.e., VMS tends to estimate a lower dew point (drier atmospheric conditions) than observed, typically by about 2–10 $^{\circ}\text{C}$, and particularly in the western part of the domain. Although many locations in central and southern California have mean biases $\leq -10^{\circ}\text{C}$, no location has a mean bias of $> +5^{\circ}\text{C}$. The largest RMS errors are also concentrated in California, along with a few stations in Oregon and Washington, and are largest in summer and autumn, which include part of the growing season and the bulk of the wildfire season.

At San Diego (KSAN) and other Mediterranean climates across California, the poor T_{dew} estimation arises partly due to the way VMS uses a modified version of the Kimball-97 algorithm that implements a 90-day window when computing annualized P . In these locations it is not unusual to have little to no rain for 90 days in the spring and summer, with the result that the VMS-modified algorithm drops the annualized P value to the arbitrary value of 8 cm. Such a low P value results in a far too negative T_{dew} correction during the dry period. The upper left panel of Fig. 3 illustrates this phenomenon. By late June of 1991 (small green arrow on the figure), there had been little precipitation at the station for 90 days, and the corrected T_{dew} (red) discontinuously jumps

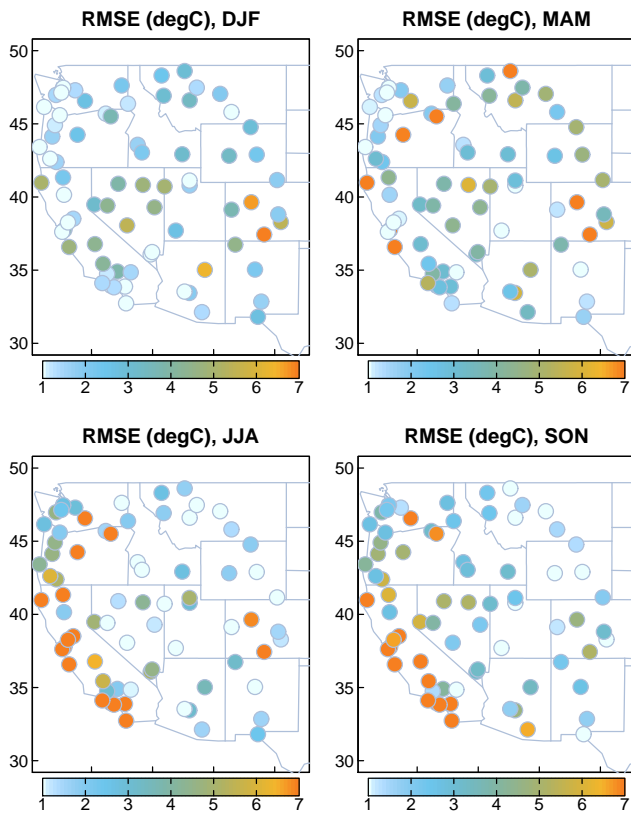


Fig. 5. As in Fig. 3, but for the RMS error ($^{\circ}\text{C}$).

to a much lower value once the 90-day averaging window advances to cover only the dry period.

Averaged across all 74 stations examined here, in March–April–May (MAM) the mean T_{dew} bias (VMS minus observations) for the original Kimball-97 algorithm is 3% larger than for the VMS modified algorithm. However in the other three seasons, the mean bias is 20–150% larger using VMS’s modified algorithm than found when using the original Kimball-97 algorithm. The simulated values are worse primarily in the Mediterranean coastal climates of central and southern California, locations where Figs. 4 and 5 showed the T_{dew} estimate was especially biased. The biggest effect is in September–October–November (mean error of -2.88°C for VMS, vs. -1.13°C for the original algorithm with actual long-term average P), at the end of the long summer dry period in coastal southern California. Diurnal variation in RH in that season can be very large on the coast, with nighttime moisture recovery with the onshore breeze.

2.3 Simulating humidity in warm vs. cold years

Our primary purpose is to understand how VMS might simulate humidity in the future, as the Earth becomes increasingly warmer due to the accumulation of anthropogenic GHGs in the atmosphere. This is distinct from the problems VMS

and the Kimball-97 parameterization exhibited in the previous sections, simulating observed historic humidity in western US and coastal Mediterranean climates. There is no way to evaluate future behavior based on historical data alone, but observed data can be used to evaluate whether the VMS humidity algorithm generates systematically different biases depending on the temperature. Ideally, even if the algorithm is biased (Fig. 4), it should have the same bias in warm and cold years. Otherwise, a systematic change in temperatures over time might generate a systematic change in humidity bias over time, which would mimic a humidity trend. This trend could either add to or offset a real-world humidity trend, depending on its sign.

Figure 6 shows the mean bias in T_{dew} in the five warmest years at each station, minus the T_{dew} bias in the five coldest years at that station. Water years (October to September) were used in this calculation rather than calendar years since we are most interested in hydrological applications. The entire period used is water years 1976–2009 (34 yr), so this is approximately the difference between the warmest 15% and coldest 15% of years. Results are given for the entire water year (left panel), or just the cold (middle panel) and warm (right panel) seasons; the warmest and coldest years are calculated separately for each season. The number of stations with positive and negative differences in bias between the warm and cold years is noted in the lower left corner of each panel in Fig. 6. The results show that during the cold season, the T_{dew} bias is less negative in warm years ($p < 0.01$). Although the warm season result is in the same sense, it is not significant, and the year-round result shows little difference in the number of stations.

While less bias is desirable, the drawback is that as temperatures increase over time this changing bias could mimic a positive T_{dew} trend. In the cold season, the difference in T_{dew} bias between the five warmest and five coldest years is on the order of 1°C (Fig. 6). The air temperature difference between the warm and cold years is about 3°C . So if the western US warms $\sim 3^{\circ}\text{C}$ in the cold season as a result of climate change, this may produce a trend of $\sim 1^{\circ}\text{C}$ in the simulated T_{dew} . However in the warm season, and especially in the yearly average, this does not seem to be an issue.

3 Model projected changes in humidity over the western US

3.1 CMIP5 global climate model humidity changes

We calculated the annual and seasonal (DJF, MAM, JJA, SON) surface relative humidity (RH) trends in 13 global climate models from the Coupled Model Intercomparison Project, version 5 (CMIP5) data archive (Taylor et al., 2012). The models are listed in Table 1, and include all those with the necessary surface daily humidity, temperature, and precipitation data at the time this work was undertaken. We used

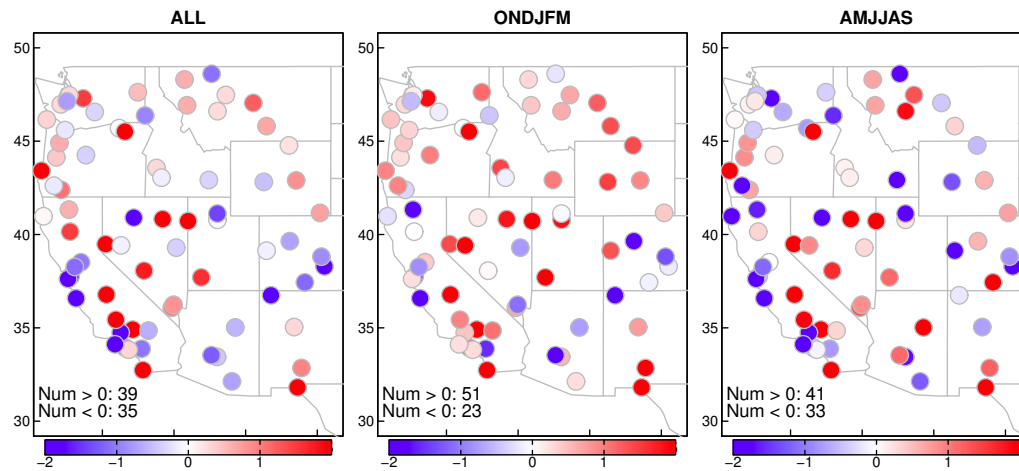


Fig. 6. Mean T_{dew} bias ($^{\circ}\text{C}$) in the five warmest years in the 1975–2009 record minus the mean bias in the five coldest years. Stratified by season (ONDJFM = October through March; AMJJAS = April through September; ALL = all months).

Table 1. Global climate models used in this analysis, taken from the Couple Model Intercomparison Project, Version 5 (CMIP5) archive.

Model	Originating institution
CanESM2	Canadian Centre for Climate Modelling and Analysis
CCSM4	National Center for Atmospheric Research, USA
CNRM-CM5	Centre National de Recherches Meteorologiques, France
CSIRO-Mk3.6.0	CSIRO Atmospheric Research, Australia
GFDL-CM3	NOAA Geophysical Fluid Dynamics Laboratory, USA
GFDL-ESM2G	NOAA Geophysical Fluid Dynamics Laboratory, USA
GISS-E2-R	NASA Goddard Institute for Space Studies, USA
HadGEM2-ES	Met Office Hadley Centre for Climate Prediction and Research, UK
INM-CM4	Institute for Numerical Mathematics, Russia
IPSL-CM5A-LR	Institut Pierre-Simon Laplace, France
MIROC5	The University of Tokyo and National Institute for Environmental Studies, Japan
MRI-CGCM3	Meteorological Research Institute, Japan
NorESM1-M	Norwegian Climate Center

two representative concentration pathways (RCPs): RCP 4.5 and RCP 8.5 (van Vuuren et al., 2011), roughly corresponding to medium and high anthropogenic greenhouse gas emissions scenarios, respectively. The RCP numbers indicate the approximate anthropogenic forcing each scenario experiences, in Watts m^{-2} , at the end of the century. The period included is 2010–2099. Because of the large number of models and seasons, in this work we show multi-model ensemble averages (MMEAs), which in many measures produces superior results to an individual model, even in a regional context (Pierce et al., 2009).

Figure 7 shows the seasonal and annual RH trends for the MMEA, along with the number of models that have a negative trend (decreasing RH) in each grid cell. On an annual basis, 9–12 of the 13 models have predominantly negative trends over most of the western US, particularly in the northern part of the domain. RH declines are generally stronger away from the coast. The average trend in spring and sum-

mer reaches -0.2 percentage points per decade in RCP 4.5, and -0.8 points per decade in RCP 8.5, with typically 80 % or more of the models agreeing on the sign of the trend. All the models show increasing RH offshore of California in the extreme southwest part of the domain, though the values are small. Several models show increasing summer RH over western Arizona and southern California in RCP 4.5, apparently a monsoonal response, although this trend is not statistically significant in the ensemble average and is reversed in the more strongly forced RCP 8.5 scenario.

3.2 VMS-simulated humidity changes

To evaluate VMS's simulation of RH trends, the daily temperature and precipitation data from the 13 global models was bilinearly interpolated to a common $2 \times 2^{\circ}$ grid over the western US, applied to VMS, and the difference between the VMS-estimated RH trend and global model RH trend was calculated. VMS's algorithms calculate dew point

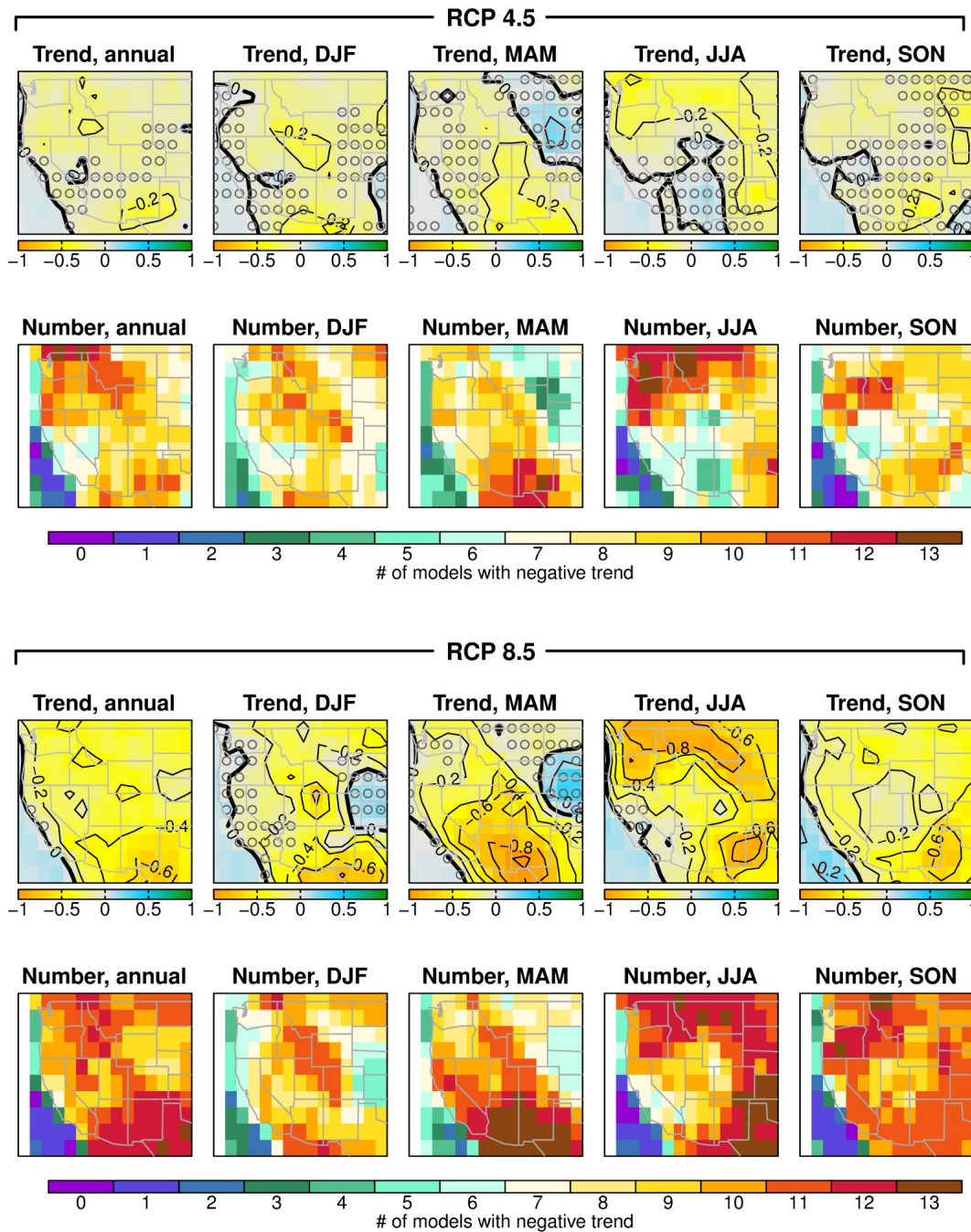


Fig. 7. Mean RH trends (percentage points per decade), and number of models with a negative RH trend, found in a set of 12 CMIP5 simulations with the rcp 4.5 (upper panel) and rcp 8.5 (lower panel) concentration pathways. Contour interval: 0.2. Grey circles indicate trends that are not significant at the 0.05 level.

temperature, which is then converted to vapor pressure. To calculate RH, the variable of interest here, requires an air temperature. It is assumed that RH is calculated with respect to the daily average temperature, T_{avg} . Further, T_{avg} was taken as $(T_{min} + T_{max})/2$. This is not exactly true for VMS, which internally calculates temperatures at each hour and

then averages them to produce T_{avg} , but is nonetheless a close approximation.

Results are shown in Fig. 8. It is clear that VMS tends to systematically bias the RH trend towards more positive values. Errors are largest (VMS simulating an overly positive RH trend) in the interior western US, roughly over Colorado, Idaho, Montana, and Wyoming, and are about twice

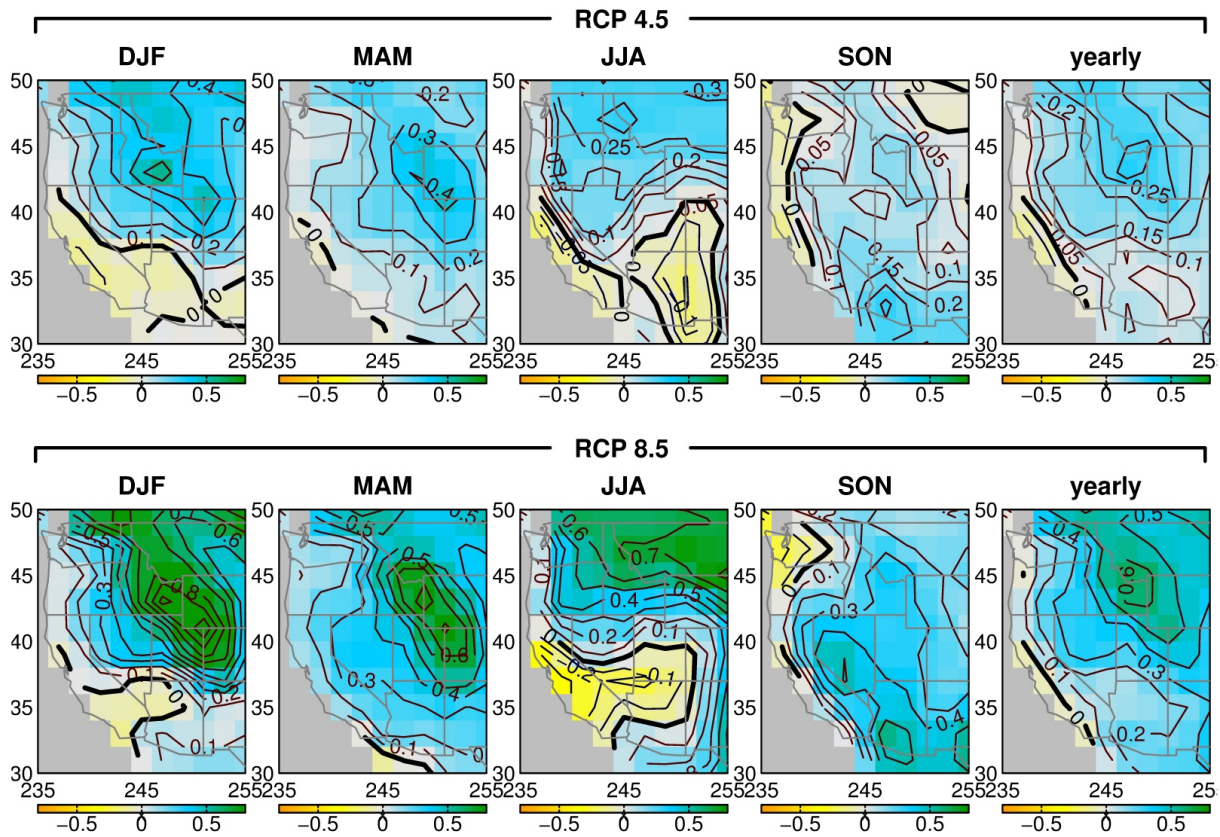


Fig. 8. Model mean error in the VMS-simulated relative humidity trend field (percentage points per decade), with respect to the trend in the original global model. Contour interval is 0.05 (upper panels), 0.1 (lower panels).

as large for the RCP 8.5 forcing scenario as for the RCP 4.5 scenario, which is consistent with the anthropogenic forcing being considerably larger in the latter. The sign of the error is reversed near the coast in many of the models, although coastal errors are generally much smaller than errors in the interior. Errors are weakest in the autumn, and generally stronger and approximately equal in the other three seasons. Along the coast the location of greatest error moves north as the year progresses, peaking in spring in Southern California, summer in Central/Northern California, and autumn in the Pacific Northwest.

These errors can be made more quantitative by computing the histogram of differences between the RH trends at each grid cell, pooled over all the models (Fig. 9). The left-hand column shows the VMS-estimated RH trend minus the original global model trend, i.e., the change in RH trend due to VMS. In addition to imposing notable spread, VMS's humidity algorithms systematically bias the simulated RH trends, with mean biases across the domain and different models of 0.12 percentage points per decade for RCP 4.5 and 0.32 percentage points per decade for RCP 8.5. The stronger the applied GHG forcing, the bigger the positive RH trend bias VMS tends to develop. Considering that the ensemble median RH trend from the full set of CMIP5 global models

is on the order of -0.2 to -0.8 percentage points per decade (Fig. 7), these biases are easily large enough to be significant to the simulation's results.

In regional modeling it is common to bias correct and downscale global model data, so the middle column of Fig. 9 shows the effect that bias correcting of the original global model data has on the simulated VMS RH trend (the bias correction method used is described in Pierce et al., 2012). The right column shows the change in trend due to bias correction with constructed analogue (BCCA) downscaling (Hidalgo et al., 2008; Maurer et al., 2010). For constructing this last quantity, VMS RH trends were simply interpolated to the finer downscaled grid before the grid cell-by-grid cell difference was computed. Neither bias correction nor downscaling contributes appreciably to the error in the RH trend.

3.3 Components of the relative humidity trend

Decreasing RH can arise from increasing temperatures or decreasing atmospheric water content. Both T_{avg} and T_{dew} increase in the model runs analyzed here, but T_{avg} always warms more than T_{dew} , typically by about 50%. So the decrease in RH is accomplished by ambient air temperatures

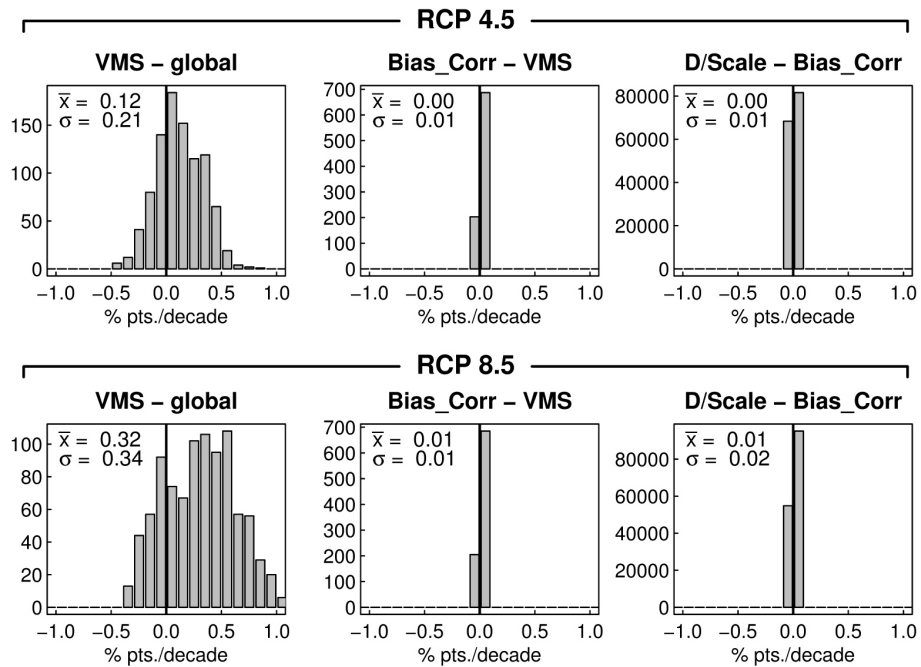


Fig. 9. Histograms of changes (shifts) in the estimated RH trend (percentage points per decade) at all gridpoints in the western US, accumulated across all models. Left column: RH trend in VMS minus that found in the global model. Center column: trend after bias correction minus trend before bias correction. Right column: trend after downscaling minus that found before downscaling. Y-axis is number of grid cells. The mean (\bar{x}) and standard deviation (σ) of the distribution are also indicated.

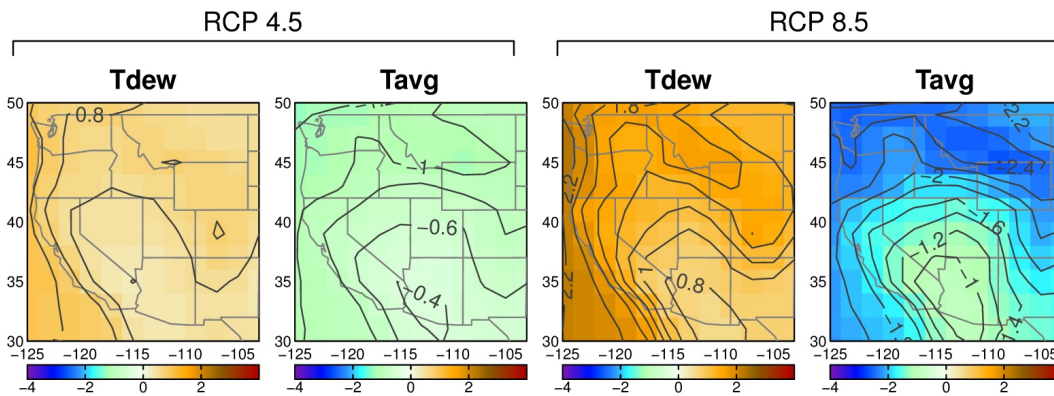


Fig. 10. Contribution (percentage points per decade) to global model relative humidity trend arising from global model trends in T_{dew} and T_{avg} , as noted in the panel titles. Contour interval is 0.2.

warming faster than the increasing moisture content of the atmosphere, but both increase.

Equal trends in T_{dew} and T_{avg} do not contribute equally to a trend in RH because of nonlinearities in the relationship between temperature and humidity. $RH = \text{svp}(T_{dew})/\text{svp}(T_{avg})$, where $\text{svp}(T)$ is the saturation vapor pressure at temperature T ; since both T_{dew} and T_{avg} have trends, the relative humidity trend dRH/dt can be expanded using the standard formula for the derivative of a quotient, along with the chain rule, to relate RH trends to trends in T_{dew} and T_{avg} . Actually evaluating the terms requires calculating $d\text{svp}/dT$ (note: change

with respect to temperature, not time), which was obtained by taking the tangent to the $\text{svp}(T)$ curve at the mean climatological T_{dew} and T_{avg} values (i.e., linearizing around the annual mean T_{dew} and T_{avg}). Figure 10 shows the resulting contributions to the global model RH trend that arise from global model trends in T_{dew} and T_{avg} . In the RCP 4.5 runs, warming T_{avg} by itself would tend to change RH by -0.6 to -1 percentage points per decade in the majority of the interior western US. T_{dew} by itself would tend to increase RH by $+0.5$ to $+0.8$ percentage points per decade, partially compensating for the T_{avg} warming, leaving the residual RH trends

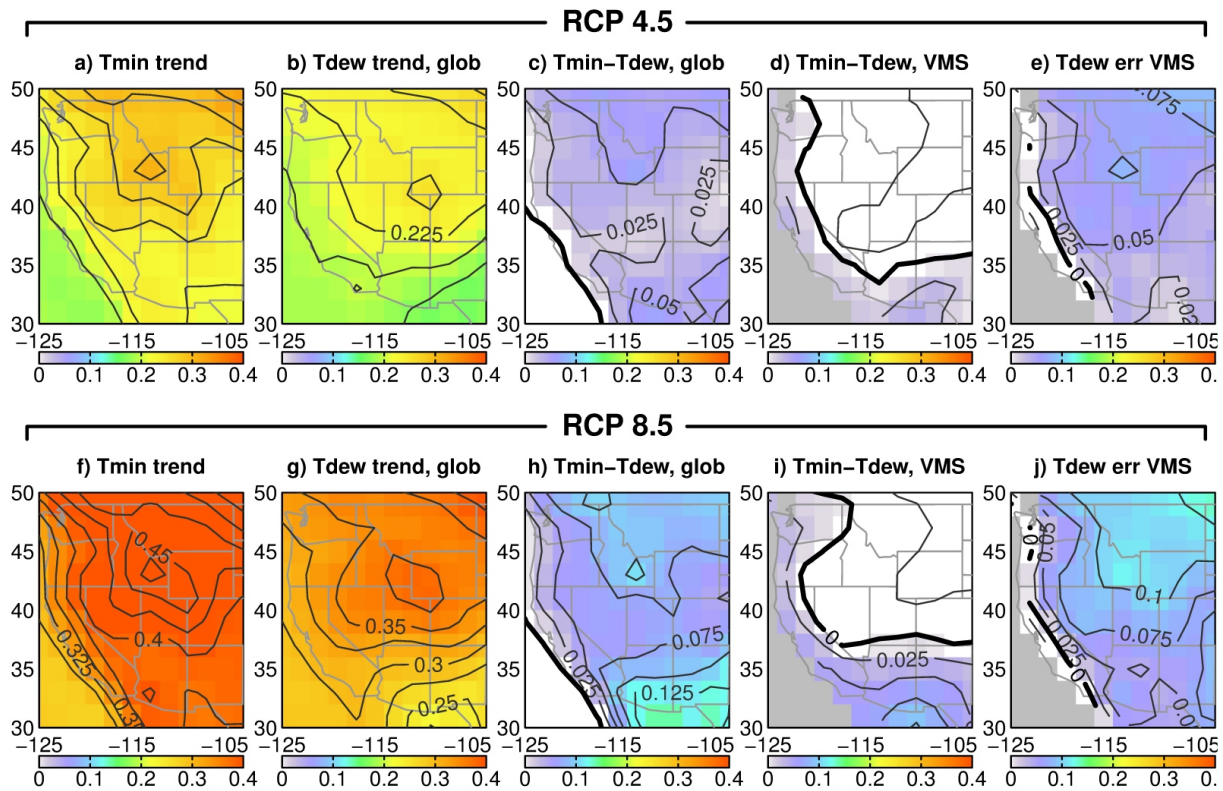


Fig. 11. For the mean of the global models, using RCP 4.5 forcing: (a) the T_{\min} trend, $^{\circ}\text{C}$ per decade; (b) T_{dew} trend from the global model, $^{\circ}\text{C}$ per decade; (c) T_{\min} trend minus global model T_{dew} trend, $^{\circ}\text{C}$ per decade; (d) T_{\min} trend minus VMS's T_{dew} trend, $^{\circ}\text{C}$ per decade. (e) Error in VMS's T_{dew} trend (with respect to the global model), $^{\circ}\text{C}$ per decade. Panels (f)–(j): same, but for RCP 8.5 forcing. Contour interval is 0.025.

of -0.1 to -0.2 percentage points per decade seen in the left-most column of Fig. 7. Values are proportionally higher for the RCP 8.5 case.

3.4 Understanding VMS's humidity trend bias

As described in Sect. 2, VMS computes T_{dew} using T_{\min} and a correction based on the local aridity. The first question is whether the humidity error arises from the handling of T_{\min} or from the aridity correction. What would the simulated RH trend be if only T_{\min} were included in the calculation? We computed this and found that in about half the simulations, using only T_{\min} results in an even more positively biased trend than found when including the correction. In the other half, the trend is about the same as found using the correction. The implication is that the correction, while often acting in the right direction, is not strong enough to overcome the deleterious effects of assuming T_{dew} can be estimated simply as T_{\min} . This point is brought out more fully in Fig. 11. Panels a–c show the mean global model T_{\min} trend, T_{dew} trend, and difference between them, respectively, for the RCP 4.5 forcing scenario. For comparison, the difference between the T_{\min} and T_{dew} trends computed by VMS is shown in panel d. In the interior, the difference in trends found in VMS is no-

tably smaller than in the global models. In other words, when computing T_{dew} , VMS does not correct the T_{\min} trend enough for aridity, and as a result T_{dew} in VMS increases too much in the interior western US. The implied error in VMS's T_{dew} trend is shown in panel e. Similar, though stronger, results are found for RCP 8.5 forcing (panels f–j).

The Kimball-97 aridity correction depends on DTR and EF (Eq. 1). The model-estimated DTR trend is shown in Fig. 12. There is little agreement in the magnitude or sign of this trend across the different models, leading to a near-zero annual mean value for RCP 4.5 and values of 0.05 or less for RCP 8.5. Furthermore, Eq. (1) indicates that a DTR trend of 0.05°C per decade, consistent with the individual seasonal values of RCP 4.5 or the annual mean for RCP 8.5 as shown in Fig. 12, will produce a T_{dew} tendency of only about 0.01°C per decade. This value is too small to explain the 0.05 – 0.1°C per decade error in the VMS-estimated T_{dew} trend (Fig. 11). Between the model disagreements on the sign of the DTR trend and the small effect it has, it is unlikely that the overly large T_{dew} trends in VMS arise from treatment of the DTR parameter.

The EF trends are also shown in Fig. 12. Values are generally positive over the southwestern US, indicating an increasing aridity over that part of the domain. Comparing the EF

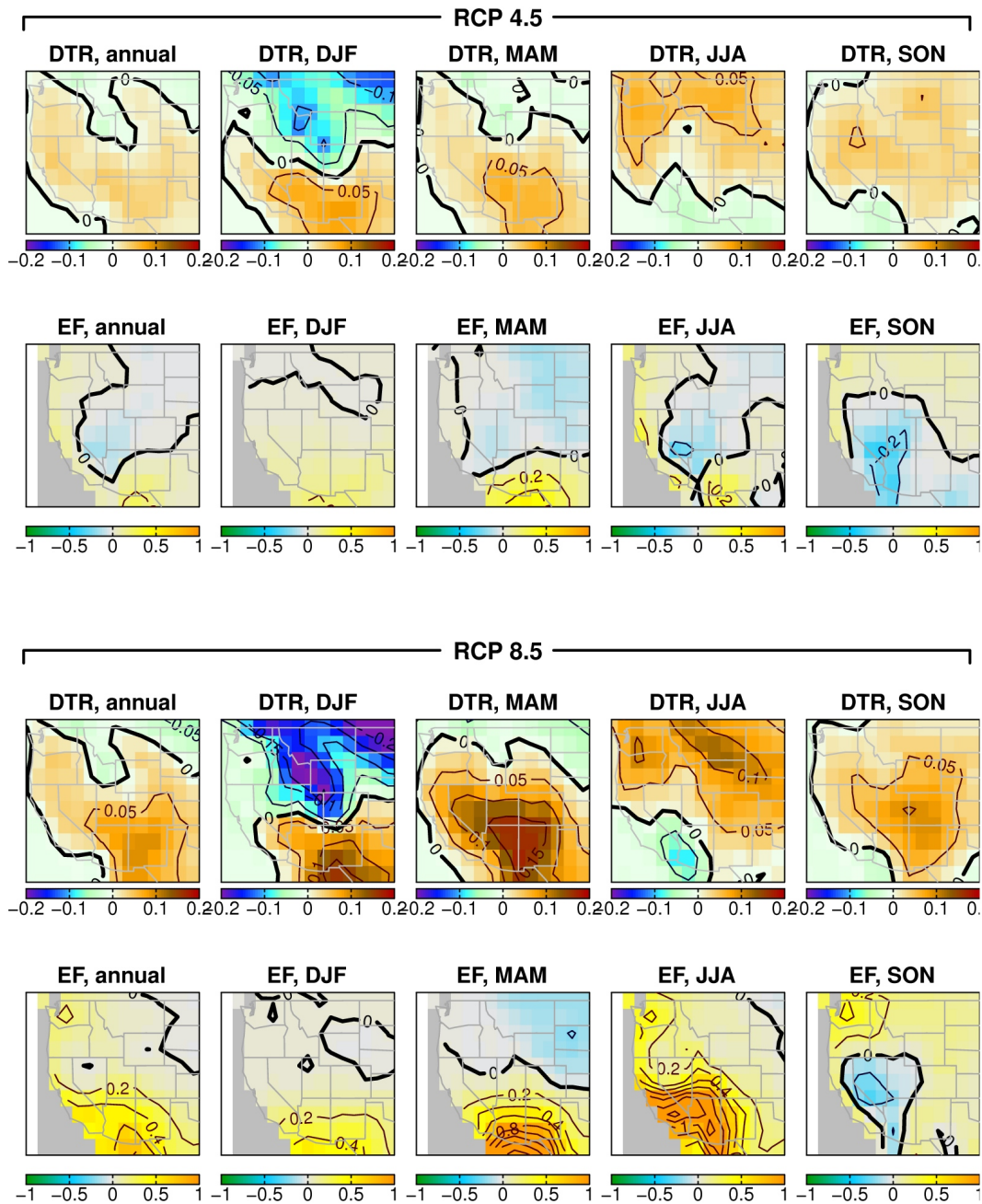


Fig. 12. Trend in the diurnal temperature range (DTR), °C per decade, and in Kimball et. al’s EF parameter (0.001 per decade). Upper panels: for RCP 4.5 forcing. Lower panels: for RCP 8.5 forcing.

trends (Fig. 12) to the errors in the VMS-estimated T_{dew} trend (Fig. 11, panels e and j) reveals correspondences; where the EF trend is greatest, the T_{dew} error tends to be lowest. For example, in RCP 4.5, the EF trend is greatest along the west coast and southern tip of Arizona/New Mexico; this is also where the T_{dew} trend error is smallest. The point-by-point spatial correlation between the two fields is 0.66 with a slope that is significantly different from zero ($p < 0.05$). I.e., locations where VMS simulates increasing aridity (and therefore

an increasing depression of T_{dew} below T_{min}) also show T_{dew} trends that are the most consistent with the original global model. Locations in the interior western US where VMS fails to show increasing aridity show the largest errors in the T_{dew} trend.

This analysis implies that the problem is that not enough of the domain shows the increasing EF (aridity) trends, particularly in the northern interior western US – exactly where VMS’s T_{dew} trend is too large. Since EF is PET/P , the low

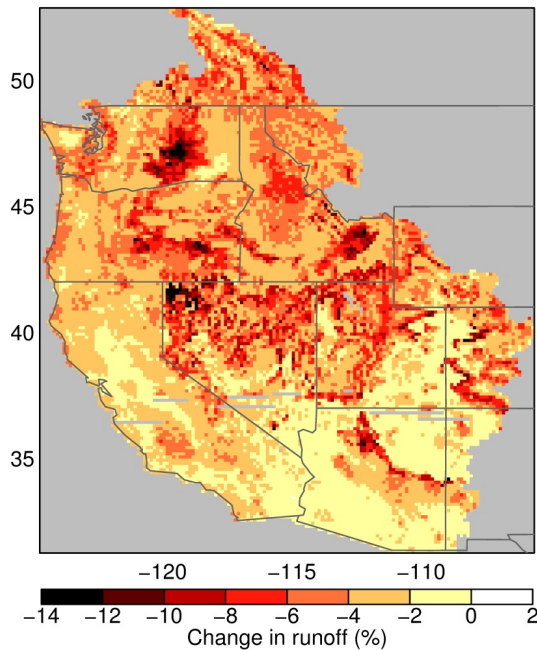


Fig. 13. Changes in annual runoff (%) calculated by VMS given an imposed, fixed $0.75\text{ }^{\circ}\text{C}$ decrease in T_{dew} .

values of P in the southwest deserts drive very large values of EF there. The percentage change in EF is much more equal across the domain than seen in Fig. 12, but the actual magnitudes of the EF changes are much larger in the desert regions because of the division by P . In the Northern Rockies, a different weighting of EF or the EF trend would have little effect on the T_{dew} trend, since the EF trend is so small there to begin with. The problem of insufficient EF trend could be solved by adding a bias term to the EF trend, but that would simply be inserting the anticipated trend into the result in an ad hoc way, and so should be avoided.

4 Implications for runoff over the western US

The errors in simulated humidity might have an effect on runoff, with lower humidities associated with more evapotranspiration water loss from the surface and therefore lower runoff. To test this, a simple numerical experiment was performed by decreasing VMS's calculated value of T_{dew} by $0.75\text{ }^{\circ}\text{C}$ before it was used by VIC. This value was chosen as a representative end-of-century value for the interior western US based on the mean model analysis (Fig. 11, panels e and j).

For a control run, VMS was first driven by observed daily T_{min} , T_{max} , and P on a $1/8 \times 1/8^{\circ}$ latitude-longitude grid over the western US, over the period 1915–2003 (Hamlet and Lettenmaier, 2005). The experiment consisted of forcing VMS to decrease its calculated T_{dew} by $0.75\text{ }^{\circ}\text{C}$ at all times, with

the intention of isolating the effects of T_{dew} by altering only T_{dew} , leaving T_{min} , T_{max} , and P unchanged.

The effect of decreasing T_{dew} on runoff is shown in Fig. 13. Declines exceed 4% over much of the western US, ranging up to 14% in some locations. The decreases are not geographically uniform, with the largest values concentrated in the higher elevations east of both the Sierra Nevada and Cascade mountain ranges, and in the mountainous parts of Colorado, Utah, Idaho, Montana, and Arizona. In the lower elevation parts of the lower Colorado River basin, by contrast, decreases generally do not exceed 2%.

After routing the runoff, annual streamflow in the Colorado River at Lees Ferry declines about 4%. A recent study (Harding et al., 2012) using VMS forced by down-scaled GCM temperature and precipitation fields as described herein concluded that Colorado River streamflow out of the upper basin might decline 7.6% by the end of the century (a mean value across models), so a 4 percentage point correction to that result is potentially important to include.

Although simplistic, this experiment suggests the humidity errors could have a discernable impact on model-simulated future streamflow. We emphasize that the concern is not with a constant bias in the simulated Lees Ferry runoff, which could be addressed by a simple bias correction technique. Rather, the issue is that the global models project a trend of decreasing relative humidity in this area in the coming century, a trend that is not well captured by VMS. Correctly including this humidity trend could decrease simulated Colorado River flow by about 4% over the course of the century.

5 Summary and conclusions

In this work we have examined relative humidity (RH) simulations from 13 global climate models from the CMIP5 archive, driven with the RCP 4.5 and 8.5 scenarios of atmospheric greenhouse gas concentrations over the course of the 21st century. Results suggest that the interior western US is likely to experience an RH decline of about 0.1 to 0.6 percentage points per decade, depending on season, location, strength of the anthropogenic forcing, and the model considered. Land surface models should include this drying, as it could affect processes such as evapotranspiration, runoff, wildfires, and plant growth. The purpose of this work has been to determine if the variable infiltration capacity (VIC) hydrological modeling system (VMS), when run with input variables T_{min} , T_{max} , and precipitation (P) from a global model, preserves the original global model's RH trend. We examine this hydrological model because it has been frequently used in studies of the future climate of the western US. Systematic errors in its simulations could therefore have implications for our understanding of climate change's effects in the region, and potentially on resource management or adaptation decisions made on the basis of those studies.

VMS calculates atmospheric moisture content using algorithms from the MT-CLIM package (Hungerford et al., 1989; Thornton and Running, 1999; Thornton et al., 2000), incorporating a modified version of the Kimball et al. (1997) (Kimball-97 hereafter) parameterization of T_{dew} . Local T_{dew} is taken as T_{min} , adjusted by an aridity term (arid locations have a lower T_{dew} relative to T_{min}) and a term proportional to the diurnal temperature range (DTR). Comparison of VMS's estimated T_{dew} to observed values at 74 meteorological stations across the western US shows that the parameterization does a poor job at locations influenced by the marine environment, particularly along the western coast of the US, where it consistently underestimates T_{dew} . This is partly due to neglect of marine humidity sources (and thus not a surprising result), and partly due to a modification to the Kimball-97 algorithm that is used in VMS; rather than the aridity term being calculated from annual precipitation, it is calculated from annualized precipitation over the last 90 days. In the Mediterranean climates along the west coast, it is not unusual to experience 90 days without any precipitation, leading to a sudden drop in VMS-estimated RH. Although these Mediterranean locations typically produce limited runoff (for instance, Southern California imports most of its water), correctly estimating humidity in the population centers there is still of interest for purposes of modeling human comfort (heat index), health, air conditioning use, and wildfire. Wildfire probabilities in neighboring vegetated areas could be misestimated, along with the air pollution impacts of changes in wildfire (both local and regional, since wildfire emissions are transported long distances).

To examine whether a global model's RH trend is preserved in VMS, the daily T_{min} , T_{max} , and P fields from 13 global model simulations were applied to the VIC modeling system. It was found that the VMS-simulated RH trend is not a faithful reproduction of the trend in the original global model, but rather is consistently biased towards positive values in interior locations (i.e., less RH decrease than the global models projected). Since regional climate change studies often use bias correction and downscaling, we also examined the impact these have on the RH trend bias, but found they had negligible effect. The size of the bias is significant, being enough in some cases to eliminate or even reverse the original RH trend found in the global model.

A simple numerical experiment suggested that eliminating the RH bias could diminish runoff up to 14 % in the dry interior US, and reduce Colorado River flow at Lees Ferry by up to 4 % by the end of this century. As of this writing, the Southern Nevada Water Authority (<http://www.snwa.com>) is constructing infrastructure that will enhance their access to an amount of water equal to 2 % of the historical Colorado River flow at Lees Ferry. That project has an estimated cost of approximately 800 million USD, so we believe that a systematic model bias of 4 % in projections of future Lees Ferry flow is of practical economic significance.

The RH trend errors could also affect the simulation of future wildfires. The fire model in Westerling et al. (2011) finds that the distribution of fire sizes is sensitive to moisture deficit, which is affected by relative humidity. This distribution is highly non-gaussian, with a heavy tail of large events that have a tremendous impact on the western landscape, so a possible change in fire size could be significant for understanding future climate impacts in the western US. In addition to fire size, Westerling et al. (2011) also model large (> 200 ha) fire occurrence as a nonlinear function of moisture deficit. Analyzing their model over the estimation period used in that work (1972-1999), we find that a systematic 5 % decrease in relative humidity from within the range of relative humidity values where fire is more likely to occur increases the average probability of a large fire occurring by 13 to 60 %, with the larger percentage increases corresponding to higher initial relative humidity values (i.e. lower initial probabilities of fire).

Simulated RH declines are slightly too strong along the coast. This is likely the result of the VMS-estimated aridity trends and the corresponding corrections to the $T_{\text{dew}} - T_{\text{min}}$ relationship failing to represent ocean humidity sources. However, the geographical extent of marine influences may be exaggerated in the relatively coarse resolution global climate models used here, which do not resolve coastal topography.

The global model results agree that both average temperatures (T_{avg}) and T_{dew} will increase everywhere in the western US in the coming century. Generally T_{avg} increases more rapidly than T_{dew} , leading to a decrease in RH, especially in the interior. VMS estimates an overly large increase in T_{dew} , which is why the RH decrease is smaller in magnitude than it should be.

These results suggest that improving the simulation of RH trends under conditions of climate change may require introducing a new input variable to augment the current dependence on T_{min} , T_{max} , and P . The accumulation of greenhouse gases in the atmosphere is altering the radiation balance of the planet, initially through an increased downward longwave flux from the atmosphere to the surface. A statistical fit to historical conditions might have limitations if the balance of physical processes determining the relationship between T_{dew} and T_{min} changes, and this may be the case for future humidity over the western US.

Acknowledgements. We would like to thank Ted Bohn and Dennis Lettenmaier of the Land Surface Hydrology Research Group at the University of Washington for valuable comments and suggestions that improved the manuscript. This work was funded by the California Energy Commission's Public Interest Energy Research (PIER) program, UC-CIEE Award No. POCE01-M08, in furtherance of improving future climate projections over California, and by the National Oceanic and Atmospheric Administration's California and Nevada Applications Program, grant NA11OAR4310150. We also acknowledge the World Climate

Research Programme's Working Group on Coupled Modelling, which is responsible for CMIP, and we thank the climate modeling groups (listed in Table 1 of this paper) for producing and making available their model output. For CMIP the US Department of Energy's Program for Climate Model Diagnosis and Intercomparison provides coordinating support and led development of software infrastructure in partnership with the Global Organization for Earth System Science Portals. The authors would also like to thank anonymous reviewers for helpful comments on this manuscript.

Edited by: N. Romano

References

- Abdulla, F. A. and Lettenmaier, D. P.: Development of regional parameter estimation equations for a macroscale hydrologic model, *J. Hydrol.*, 197, 230–257, 1997.
- Adam, J. C., Hamlet, A. F., and Lettenmaier, D. P.: Implications of global climate change for snowmelt hydrology in the twenty-first century, *Hydrol. Process.*, 23, 962–972, 2009.
- Arnell, N. W.: A simple water balance model for the simulation of streamflow over a large geographic domain, *J. Hydrol.*, 217, 314–335, 1999.
- Barnett, T. P., Pierce, D. W., Hidalgo, H. G., Bonfils, C., Santer, B. D., Das, T., Bala, G., Wood, A. W., Nozawa, T., Mirin, A. A., Cayan, D. R., and Dettinger, M. D.: Human-induced changes in the hydrology of the western United States, *Science*, 319, 1080–1083, 2008.
- Bohn, T. J., Livneh, B., Oyster, J. W., Running, S. W., Nijssen, B., and Lettenmaier, D. P.: Global evaluation of MTCLIM and related algorithms for forcing of ecological and hydrological models. *Agr. Forest. Meteorol.*, in press, doi:10.1016/j.agrformet.2013.03.003, 2013.
- Brown, P. J. and DeGaetano, A. T.: A Method to Detect Inhomogeneities in Historical Dewpoint Temperature Series, *J. Appl. Meteorol. Clim.*, 48, 2362–2376, 2009.
- Brown, T. J., Hall, B. L., and Westerling, A. L.: The impact of twenty-first century climate change on wildland fire danger in the western United States: An applications perspective, *Clim. Change*, 62, 365–388, 2004.
- Christensen, N. S. and Lettenmaier, D. P.: A multimodel ensemble approach to assessment of climate change impacts on the hydrology and water resources of the Colorado River Basin, *Hydrol. Earth Syst. Sci.*, 11, 1417–1434, doi:10.5194/hess-11-1417-2007, 2007.
- Christensen, N. S., Wood, A. W., Voisin, N., Lettenmaier, D. P., and Palmer, R. N.: The effects of climate change on the hydrology and water resources of the Colorado River basin, *Clim. Change*, 62, 337–363, 2004.
- Dai, A.: Recent Climatology, variability, and trends in global surface humidity. *J. Climate*, 19, 3589–3606, 2006.
- Dessler, A. E. and Sherwood, S. C.: Atmospheric Science: A Matter of Humidity, *Science*, 323, 1020–1021, 2009.
- Friend, A. D.: PGEN – An integrated model of leaf photosynthesis, transpiration, and conductance, *Ecol. Model.*, 77, 233–255, 1995.
- Gaffen, D. J. and Ross, R. J.: Climatology and trends of U.S. surface humidity and temperature, *J. Climate*, 12, 811–828, 1999.
- Hamlet, A. F. and Lettenmaier, D. P.: Columbia River streamflow forecasting based on ENSO and PDO climate signals, *J. Water Res. Plan. Manage.-ASCE*, 125, 333–341, 1999a.
- Hamlet, A. F. and Lettenmaier, D. P.: Effects of climate change on hydrology and water resources in the Columbia River basin, *J. Am. Water Res. Assoc.*, 35, 1597–1623, 1999b.
- Hamlet, A. F. and Lettenmaier, D. P.: Production of temporally consistent gridded precipitation and temperature fields for the continental United States, *J. Hydrometeorol.*, 6, 330–336, 2005.
- Hamlet, A. F. and Lettenmaier, D. P.: Effects of 20th century warming and climate variability on flood risk in the western U.S., *Water Resour. Res.*, 43, W06427, doi:10.1029/2006WR005099, 2007.
- Harding, B. L., Wood, A. W., and Prairie, J. R.: The implications of climate change scenario selection for future streamflow projection in the Upper Colorado River Basin, *Hydrol. Earth Syst. Sci.*, 16, 3989–4007, doi:10.5194/hess-16-3989-2012, 2012.
- Hayhoe, K., Cayan, D. R., Field, C. B., Frumhoff, P. C., Maurer, E. P., Miller, N. L., Moser, S. C., Schneider, S. H., Cahill, K. N., Cleland, E. E., Dale, L., Drapek, R., Hanemann, R. M., Kalkstein, L. S., Lenihan, J., Lunch, C. K., Neilson, R. P., Sheridan, S. C., and Verville, J. H.: Emissions pathways, climate change, and impacts on California, *P. Natl. Acad. Sci.*, 101, 12422–12427, 2004.
- Hidalgo, H. G., Dettinger, M. D., and Cayan, D. R.: Downscaling with Constructed Analogues: Daily precipitation and temperature fields over the United States, California Energy Commission technical report CEC-500-2007-123, California Energy Commission, 48 pp., 2008.
- Hidalgo, H. G., Das, T., Dettinger, M. D., Cayan, D. R., Pierce, D. W., Barnett, T. P., Bala, G., Mirin, A., Wood, A. W., Bonfils, C., Santer, B. D., and Nozawa, T.: Detection and Attribution of Streamflow Timing Changes to Climate Change in the Western United States, *J. Climate*, 22, 3838–3855, 2009.
- Hungerford, R. D., Nemani, R. R., Running, S. W., and Coughlan, J. C.: MTCLIM – A mountain microclimate simulation model, USDA Forest Service Intermountain Research Station Research Paper, USDA Forest Service Intermountain Research Station, 52 pp., 1989.
- IPCC – Intergovernmental Panel on Climate Change: Fourth Assessment Working Group I Report, *Climate Change 2007, The Physical Science Basis*, Cambridge University Press, 2007.
- Kueppers, L. M., Snyder, M. A., and Sloan, L. C.: Irrigation cooling effect: Regional climate forcing by land-use change, *Geophys. Res. Lett.*, 34, L03703, doi:10.1029/2006GL028679, 2007.
- Kimball, J. S., Running, S. W., and Nemani, R.: An improved method for estimating surface humidity from daily minimum temperature, *Agr. Forest Meteorol.*, 85, 87–98, 1997.
- Leuschner, C.: Air humidity as an ecological factor for woodland herbs: leaf water status, nutrient uptake, leaf anatomy, and productivity of eight species grown at low or high vpd levels, *Flora*, 197, 262–274, 2002.
- Liang, X., Lettenmaier, D. P., Wood, E. F., and Burges, S. J.: A simple hydrologically based model of land-surface water and energy fluxes for general circulation models, *J. Geophys. Res.-Atmos.*, 99, 14415–14428, 1994.
- Maurer, E. P.: A long-term hydrologically based dataset of land surface fluxes and states for the conterminous United States, *J. Climate*, 15, 3237–3251, 2002.

- Maurer, E. P.: Uncertainty in hydrologic impacts of climate change in the Sierra Nevada, California, under two emissions scenarios, *Climatic Change*, 82, 309–325, 2007.
- Maurer, E. P. and Hidalgo, H. G.: Utility of daily vs. monthly large-scale climate data: an intercomparison of two statistical downscaling methods, *Hydrol. Earth Syst. Sci.*, 12, 551–563, doi:10.5194/hess-12-551-2008, 2008.
- Maurer, E. P., Hidalgo, H. G., Das, T., Dettinger, M. D., and Cayan, D. R.: The utility of daily large-scale climate data in the assessment of climate change impacts on daily streamflow in California, *Hydrol. Earth Syst. Sci.*, 14, 1125–1138, doi:10.5194/hess-14-1125-2010, 2010.
- Meehl, G. A., Covey, C., Delworth, T., Latif, M., McAvaney, B., Mitchell, J. F. B., Stouffer, R. J., and Taylor, K. E.: The WCRP CMIP3 multimodel dataset: A new era in climate change research, *B. Am. Meteorol. Soc.*, 88, 1383–1394, 2007.
- Nakicenovic, N., Alcamo, J., Davis, G., de Vries, B., Fenhann, J., Gaffin, S., Gregory, K., Grubler, A., Jung, T. Y., Kram, T. La Rovere, E. L., Michaelis, L., Mori, S., Morita, T., Pepper, W., Pitcher, H. M., Price, L., Riahi, K., Roehrl, A., Rogner, H.-H., Sankovski, A., Schlesinger, M., Shukla, P., Smith, S. J., Swart, R., van Rooijen, S., Victor, N., and Dadi, Z.: *Special Report on Emissions Scenarios: a special report of Working Group III of the Intergovernmental Panel on Climate Change*, Cambridge University Press, New York, NY, USA, 2000.
- Nijssen, B., O'Donnell, G. M., Hamlet, A. F., and Lettenmaier, D. P.: Hydrologic sensitivity of global rivers to climate change, *Climatic Change*, 50, 143–175, 2001a.
- Nijssen, B., O'Donnell, G. M., Lettenmaier, D. P., Lohmann, D., and Wood, E. F.: Predicting the discharge of global rivers, *J. Climate*, 14, 3307–3323, 2001b.
- Niu, J. and Chen, J.: Application of VIC and A Routing Scheme to Pearl River Basin in South China, in: *Advances in Water Resources and Hydraulic Engineering*, Proc. 16th IAHR-APD congress and 3rd symposium of IAHR-ISHS, 20–23 October 2008, Hohai Univ., Nanjing, China, 72–76, 2009.
- Pierce, D. W., Barnett, T. P., Hidalgo, H. G., Das, T., Bonfils, C., Santer, B. D., Bala, G., Dettinger, M. D., Cayan, D. R., Mirin, A., Wood, A. W., and Nozawa, T.: Attribution of Declining Western U.S. Snowpack to Human Effects, *J. Climate*, 21, 6425–6444, 2008.
- Pierce, D. W., Barnett, T. P., Santer, B. D., and Gleckler, P. J.: Selecting global climate models for regional climate change studies, *P. Natl. Acad. Sci.*, 21, 8441–8446, doi:10.1073/pnas.0900094106, 2009.
- Pierce, D. W., Das, T., Cayan, D. R., Maurer, E. P., Miller, N. L., Bao, Y., Kanamitsu, M., Yoshimura, K., Snyder, M. A., Sloan, L. C., Franco, G., and Tyree, M.: Probabilistic estimates of future changes in California temperature and precipitation using statistical and dynamical downscaling, *Clim. Dynam.*, doi:10.1007/s00382-012-1337-9, in press, 2012.
- Priestley, C. H. B. and Taylor, R. J.: On the Assessment of Surface Heat Flux and Evaporation Using Large-Scale Parameters, *Mon. Weather Rev.*, 100, 81–92, doi:10.1175/1520-0493(1972)100<0081:OTAOSH>2.3.CO;2, 1972.
- Robinson, P. J.: Monthly variations of dew point temperature in the coterminous United States, *Int. J. Climatol.*, 18, 1539–1556, 1998.
- Robinson, P. J.: Temporal trends in United States dew point temperatures, *Int. J. Climatol.*, 20, 985–1002, 2000.
- Santer, B. D., Mears, C., Wentz, F. J., Taylor, K. E., Gleckler, P. J., Wigley, T. M. L., Barnett, T. P., Boyle, J. S., Bruggemann, W., Gillett, N. P., Klein, S. A., Meehl, G. A., Nozawa, T., Pierce, D. W., Stott, P. A., Washington, W. M., and Wehner, M. F.: Identification of human-induced changes in atmospheric moisture content, *P. Natl. Acad. Sci.*, 104, 15248–15253, 2007.
- Schneider, T., O’Gorman, P. A., and Levine, X. J.: Water vapor and the dynamics of climate change, *Rev. Geophys.*, 48, RG3001, doi:10.1029/2009RG000302, 2010.
- Seager, R., Naik, N., and Vecchi, G. A.: Thermodynamic and dynamic mechanisms for large-scale changes in the hydrological cycle in response to global warming, *J. Climate*, 23, 4651–4668, 2010.
- Sherwood, S. C., Ingram, W., Tsushima, Y., Satoh, M., Roberts, M., Vidale, P. L., and O’Gorman, P. A.: Relative humidity changes in a warmer climate, *J. Geophys. Res.-Atmos.*, 115, D09104, doi:10.1029/2009JD012585, 2010.
- Taylor, K. E., Stouffer, R. J., and Meehl, G. A.: An overview of CMIP5 and the experiment design, *B. Am. Meteorol. Soc.*, 93, 485–498, 2012.
- Thornton, P. E. and Running, S. W.: An improved algorithm for estimating incident daily solar radiation from measurements of temperature, humidity, and precipitation, *Agr. Forest Meteorol.*, 93, 211–228, 1999.
- Thornton, P. E., Hasenauer, H., and White, M. A.: Simultaneous estimation of daily solar radiation and humidity from observed temperature and precipitation: an application over complex terrain in Austria, *Agr. Forest Meteorol.*, 104, 255–271, 2000.
- VanRheenen, N. T., Wood, A. W., Palmer, R. N., and Lettenmaier, D. P.: Potential implications of PCM climate change scenarios for Sacramento-San Joaquin River Basin hydrology and water resources, *Climatic Change*, 62, 257–281, 2004.
- van Vuuren, D. P., Edmonds, J., Kainuma, M., Riahi, K., Thomson, A., Hibbard, K., Hurtt, G. C., Kram, T., Krey, V., Lamarque, J.-F., Masui, T., Melnshausen, M., Nakicenovic, N., Smith, S. J., and Rose, S. K.: The representative concentration pathways: an overview, *Climatic Change*, doi:10.1007/s10584-011-0148-z, in press, 2011.
- Vincent, L. A., van Wijngaarden, W. A., and Hopkinson, R.: Surface temperature and humidity trends in Canada for 1953–2005, *J. Climate*, 20, 5100–5113, 2007.
- Wang, A., Li, K. Y., and Lettenmaier, D. P.: Integration of the variable infiltration capacity model soil hydrology scheme into the community land model, *J. Geophys. Res. D*, 113, D09111, doi:10.1029/2007JD009246, 2008.
- Westerling, A. L. and Bryant, B. P.: Climate change and wildfire in California, *Climatic Change*, 87, S231–S249, 2008.
- Westerling, A. L., Hidalgo, H. G., Cayan, D. R., and Swetnam, T. W.: Warming and earlier spring increase western U.S. forest wildfire activity, *Science*, 313, 940–943, 2006.
- Westerling, A. L., Turner, M. G., Smithwick, E. A. H., Romme, W. H., and Ryan, M. G.: Continued warming could transform Greater Yellowstone fire regimes by mid-21st century, *P. Natl. Acad. Sci.*, 108, 13165–13170, 2011.
- Willett, K. M., Gillett, N. P., Jones, P. D., and Thorne, P. W.: Attribution of observed surface humidity changes to human influence, *Nature*, 449, 710–716, 2007.

Wood, A. W., Leung, L. R., Sridhar, V., and Lettenmaier, D. P.: Hydrologic implications of dynamical and statistical approaches to downscaling climate model outputs, *Climatic Change*, 62, 189–216, 2004.

Wright, J. S., Sobel, A., and Galewsky, J.: Diagnosis of zonal mean relative humidity changes in a warmer climate, *J. Climate*, 23, 4556–4569, 2010.