

## Molecular cloning of doublesex genes of four cladocera (water flea) species

Toyota, Kenji; Kato, Yasuhiko; Sato, Masaru; Sugiura, Naomi; Miyagawa, Shinichi; Miyakawa, Hitoshi; Watanabe, Hajime; Oda, Shigeto; Ogino, Yukiko; Hiruta, Chizue; Mizutani, Takeshi; Tatarazako, Norihisa; Paland, Susanne; Jackson, Craig; Colbourne, John K; Iguchi, Taisen

DOI:

[10.1186/1471-2164-14-239](https://doi.org/10.1186/1471-2164-14-239)

License:

Creative Commons: Attribution (CC BY)

### Document Version

Publisher's PDF, also known as Version of record

### Citation for published version (Harvard):

Toyota, K, Kato, Y, Sato, M, Sugiura, N, Miyagawa, S, Miyakawa, H, Watanabe, H, Oda, S, Ogino, Y, Hiruta, C, Mizutani, T, Tatarazako, N, Paland, S, Jackson, C, Colbourne, JK & Iguchi, T 2013, 'Molecular cloning of doublesex genes of four cladocera (water flea) species', *BMC Genomics*, vol. 14, no. 1, 239. <https://doi.org/10.1186/1471-2164-14-239>

[Link to publication on Research at Birmingham portal](#)

### Publisher Rights Statement:

This is an Open Access article distributed under the terms of the Creative Commons Attribution License (<http://creativecommons.org/licenses/by/2.0>), which permits unrestricted use, distribution, and reproduction in any medium, provided the original work is properly cited.

Checked July 2015

### General rights

Unless a licence is specified above, all rights (including copyright and moral rights) in this document are retained by the authors and/or the copyright holders. The express permission of the copyright holder must be obtained for any use of this material other than for purposes permitted by law.

- Users may freely distribute the URL that is used to identify this publication.
- Users may download and/or print one copy of the publication from the University of Birmingham research portal for the purpose of private study or non-commercial research.
- User may use extracts from the document in line with the concept of 'fair dealing' under the Copyright, Designs and Patents Act 1988 (?)
- Users may not further distribute the material nor use it for the purposes of commercial gain.

Where a licence is displayed above, please note the terms and conditions of the licence govern your use of this document.

When citing, please reference the published version.

### Take down policy

While the University of Birmingham exercises care and attention in making items available there are rare occasions when an item has been uploaded in error or has been deemed to be commercially or otherwise sensitive.

If you believe that this is the case for this document, please contact [UBIRA@lists.bham.ac.uk](mailto:UBIRA@lists.bham.ac.uk) providing details and we will remove access to the work immediately and investigate.

RESEARCH ARTICLE

Open Access

# Molecular cloning of doublesex genes of four cladocera (water flea) species

Kenji Toyota<sup>1</sup>, Yasuhiko Kato<sup>1,2</sup>, Masaru Sato<sup>1</sup>, Naomi Sugiura<sup>1,3</sup>, Shinichi Miyagawa<sup>1</sup>, Hitoshi Miyakawa<sup>1</sup>, Hajime Watanabe<sup>1,2</sup>, Shigeto Oda<sup>1</sup>, Yukiko Ogino<sup>1</sup>, Chizue Hiruta<sup>1</sup>, Takeshi Mizutani<sup>1</sup>, Norihisa Tatarazako<sup>4</sup>, Susanne Paland<sup>5</sup>, Craig Jackson<sup>5</sup>, John K Colbourne<sup>5,6</sup> and Taisen Iguchi<sup>1\*</sup>

## Abstract

**Background:** The gene *doublesex* (*dsx*) is known as a key factor regulating genetic sex determination in many organisms. We previously identified two *dsx* genes (*DapmaDsx1* and *DapmaDsx2*) from a freshwater branchiopod crustacean, *Daphnia magna*, which are expressed in males but not in females. *D. magna* produces males by parthenogenesis in response to environmental cues (environmental sex determination) and we showed that *DapmaDsx1* expression during embryonic stages is responsible for the male trait development. The *D. magna dsx* genes are thought to have arisen by a cladoceran-specific duplication; therefore, to investigate evolutionary conservation of sex specific expression of *dsx* genes and to further assess their functions in the environmental sex determination, we searched for *dsx* homologs in four closely related cladoceran species.

**Results:** We identified homologs of both *dsx* genes from, *D. pulex*, *D. galeata*, and *Ceriodaphnia dubia*, yet only a single *dsx* gene was found from *Moina macrocopa*. The deduced amino acid sequences of all 9 *dsx* homologs contained the DM and oligomerization domains, which are characteristic for all arthropod DSX family members. Molecular phylogenetic analysis suggested that the *dsx* gene duplication likely occurred prior to the divergence of these cladoceran species, because that of the giant tiger prawn *Penaeus monodon* is rooted ancestrally to both DSX1 and DSX2 of cladocerans. Therefore, this result also suggested that *M. macrocopa* lost *dsx2* gene secondarily. Furthermore, all *dsx* genes identified in this study showed male-biased expression levels, yet only half of the putative 5' upstream regulatory elements are preserved in *D. magna* and *D. pulex*.

**Conclusions:** The all *dsx* genes of five cladoceran species examined had similar amino acid structure containing highly conserved DM and oligomerization domains, and exhibited sexually dimorphic expression patterns, suggesting that these genes may have similar functions for environmental sex determination in cladocerans.

**Keywords:** Cladocera, Doublesex genes, Environmental sex determination, Gene duplication, Annotated regulatory regions

## Background

Sex determination is a fundamental developmental process, affecting the sexual differentiation of gonads, and leads to sex-specific differences in behavior, physiology and morphology. Sex-determining systems can be divided into two categories: genotypic sex determination (GSD) and environmental sex determination (ESD) [1-3]. GSD is attri-

buted to the genetic segregation of genes, often residing on sex chromosomes that initiate alternate sex-determining developmental pathways. In contrast, ESD has repeatedly arisen during animal evolution [4] and is initiated by diverse environmental cues, such as temperature, photoperiod, nutrition and population density, that trigger alternative genetic signals, resulting in the regulation of male or female sex-determining genes [5,6].

Natural selection of rare mutational variants has been suggested to mediate the transitions between GSD and ESD [7,8]. A previous phylogenetic analysis revealed that there have been at least three independent switches from

\* Correspondence: [taisen@nibb.ac.jp](mailto:taisen@nibb.ac.jp)

<sup>1</sup>Okazaki Institute for Integrative Bioscience, National Institute for Basic Biology, National Institutes of Natural Sciences, and Department of Basic Biology, Faculty of Life Science, Graduate University for Advanced Studies (SOKENDAI), 5-1 Higashiyama, Myodaiji, Okazaki, Aichi 444-8787, Japan  
Full list of author information is available at the end of the article

GSD to ESD in lizards, and six transitions from ESD to GSD in turtles [9]. Moreover, previous experiments using temperature-sensitive mutations created artificially in *Caenorhabditis elegans* demonstrated how GSD could rapidly evolve into ESD as a consequence of a mutation in key sex determining genes [9]. Orthologs of GSD genes such as *dmrt1*, *sox9* and *cyp19a* (aromatase) are expressed in the gonads during the temperature-sensitive period in ESD of reptiles [10]. Thus, according to the current interpretation of these data, ESD mechanisms are likely to share many sex-determining components with GSD [5].

Sex determination systems in insects vary considerably in key factors and regulatory mechanisms to develop sex-specific traits. The sex determination mechanism in *Drosophila melanogaster* is best understood. The ratio of X chromosomes to autosomes (X:A ratio) is thought to provide the initial signal for the activation of *sex-lethal* (*sxl*), a master gene of the sex determination cascade. Then, *sxl* is produced as the sex-specific splicing isoforms. *Sxl* in female acts on the pre-mRNA of *transformer* (*tra*) resulting in reproduction of functional Tra. The functional Tra in the female, in concert with Tra-2, regulates the production of female-specific *doublesex* (*dsx*) mRNA. The male-specific splice form of *dsx* mRNA is the default splice-variant in *D. melanogaster*. *Dsx* regulates the various sex-specific traits such as gonads. Recently, sex determination mechanisms have also been demonstrated in various insect lineages such as Diptera (*Musca domestica* and *Ceratitis capitata*), Hymenoptera (*Apis mellifera* and *Nasonia vitripennis*) and Coleoptera (*Tribolium castaneum*). These studies revealed that *tra* and *dsx* are highly conserved among insects [11-14]. However, in case of Lepidoptera, *Bombyx mori*, *tra* and *tra-2* are assumed not to be required for the sex-specific splicing of *Bmdsx* pre-mRNA, because *Bmdsx* has no Tra/Tra-2 binding motif. Recently, it has been revealed that binding of the *BmPSI*, a *Bombyx* homolog of *P-element* somatic inhibitor, to the exonic splicing suppressor sequence on expected region is involved in sex-specific splicing of *Bmdsx* [12]. These data suggest that upstream genetic cascades of *dsx* might be diverse among insects.

The Cladocera (commonly called water fleas) is an ancient clade of branchiopod crustaceans comprising 16 or 18 family lineages [15,16] that all reproduce by cyclical parthenogenesis involving ESD [17]. The most well studied species are from the family Daphniidae, particularly of the genus *Daphnia*. *Daphnia* inhabit freshwater ponds and lakes on all continents and are known to switch between parthenogenetic and sexual reproduction when environmental conditions for growth and reproduction deteriorate. During normal growing conditions, populations are most often entirely composed of females. However, shortened photoperiod, a lack of food and/or

increased population density all lead to the clonal production of males that are genetically identical to their sisters and mothers [18]. First instar male juveniles are easily distinguished from the females [19]. During maturation, daphniids undergo morphological sexual differentiation of various somatic tissues, including the armament of a first thoracic leg with the copulatory hook in males, which becomes larger during the fifth instar [20]. Gonads develop and finally settle at both sides of the gut during embryogenesis in both sexes [21]. The appearance of males allows sexual reproduction to occur [22,23], when females begin producing haploid eggs requiring fertilization.

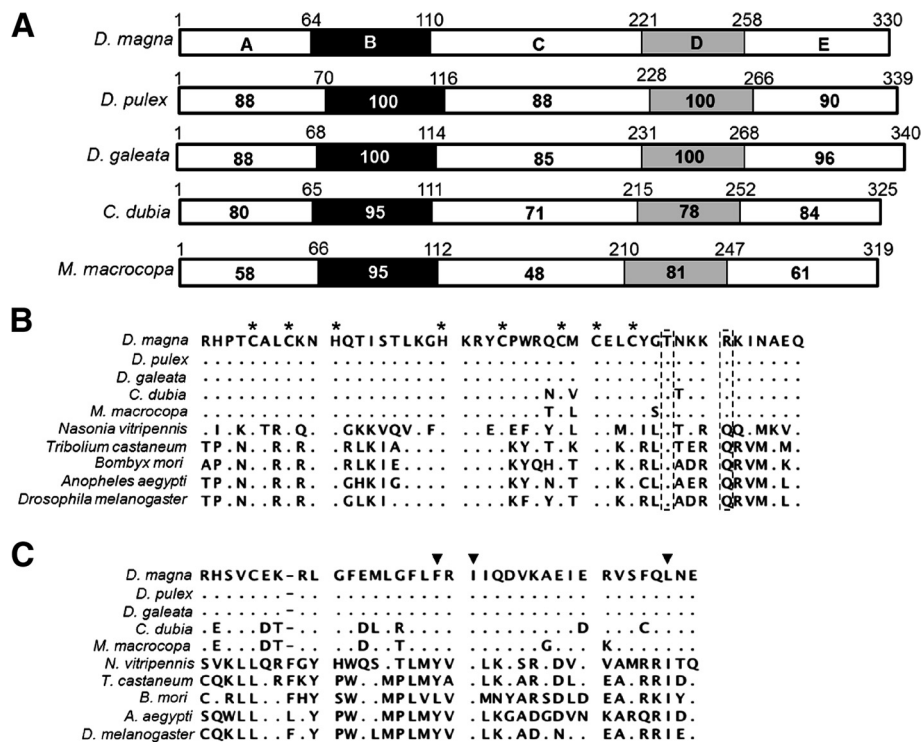
Recently, we and others found that male production occurred independently of environmental cues by treatment with exogenous juvenile hormone (JH) or its analogs [24,25]. Exposure of *D. magna* to JH analogs at the stage corresponding to the environmentally-sensitive period for sex determination of a cladoceran species of the family Moinidae [26], produced exclusively male broods, suggesting that JH could be a key molecule for understanding mechanisms of ESD [24,27,28].

A *doublesex* (*dsx*) gene was originally identified in *D. melanogaster* as a critical and terminal transcription factor in the fly sex determining cascade. *Dsx* is spatially and temporally transcribed into two sex-specific splice forms conferring sexually dimorphic traits during development [29,30]. The *dsx* gene contains two conserved domains: the Dsx/Mab-3 (DM) domain at the N-terminus and the oligomerization domain at the C-terminus [31]. Genes encoding DM-domain (DM-domain genes) were discovered to play a related role in *C. elegans* [32,33] and also in vertebrates [34-36]. In contrast, results from numerous studies have shown that other genes in the genetic sex-determination cascade widely diversified among species [1,2,37].

To understand the molecular and evolutionary relationships between GSD and ESD, we previously identified and analyzed three DM-domain genes (DMRT11E, DMRT93B and DMRT99B) from *D. magna*, displaying sexual dimorphic gene expression patterns in adult gonads [38]. However, none of these DM-domain genes exhibited sexually dimorphic expression patterns during embryonic development, suggesting that they are not involved in sex determination [38]. Two additional DM-domain genes were later found in the *D. magna* expressed sequence tags (ESTs) database [39]. Therefore, we analyzed the function of these two genes from *D. magna* using gene manipulations that we developed [40]. These experiments revealed that two *dsx* genes in *D. magna* were obtained by lineage-specific duplication, and then one of the paralogs, *Daphnia magna dsx1* (*DapmaDsx1*), plays an important role in directing the major sexually dimorphic development of *D. magna* [41]. In contrast, specific function of *Daphnia magna*







**Figure 2 Schematic diagrams of the DSX1 structures and its sequence comparison of DM- and oligomerization-domains. (A)** Domain structures of DSX1 in *Daphnia magna*, and identity with *D. pulex*, *D. galeata*, *C. dubia* and *M. macrocopa*. DM- and oligomerization-domains are indicated by black and gray boxes, respectively. **(B, C)** Alignment of predicted amino acid sequences of DM- and oligomerization-domains of DSX1 from five cladocerans, respectively. Amino acid sequences were aligned using CLUSTAL-X. Dotted boxes highlight the conserved threonine (T) residue in the DM-domain, and arginine (R) residue substituted for glutamine (Q), which is conserved amino acid residues of DSX. Asterisks indicate the zinc chelating residues [43]. Position of non-polar amino acids important in formation of the hydrophobic interface between oligomerization domains in *Drosophila* DSX are indicated with solid triangles [31,41].

domains, respectively (Figure 3A). These results suggest that putative amino acids of both the DM- and oligomerization-domains are highly conserved among the Cladocera. On the other hand, amino acid similarities outside of these domains are lower, and are proportional to the evolutionary distance between each genus; *Daphnia*, *Ceriodaphnia* and *Moina* [46] (Additional files 2 with 3).

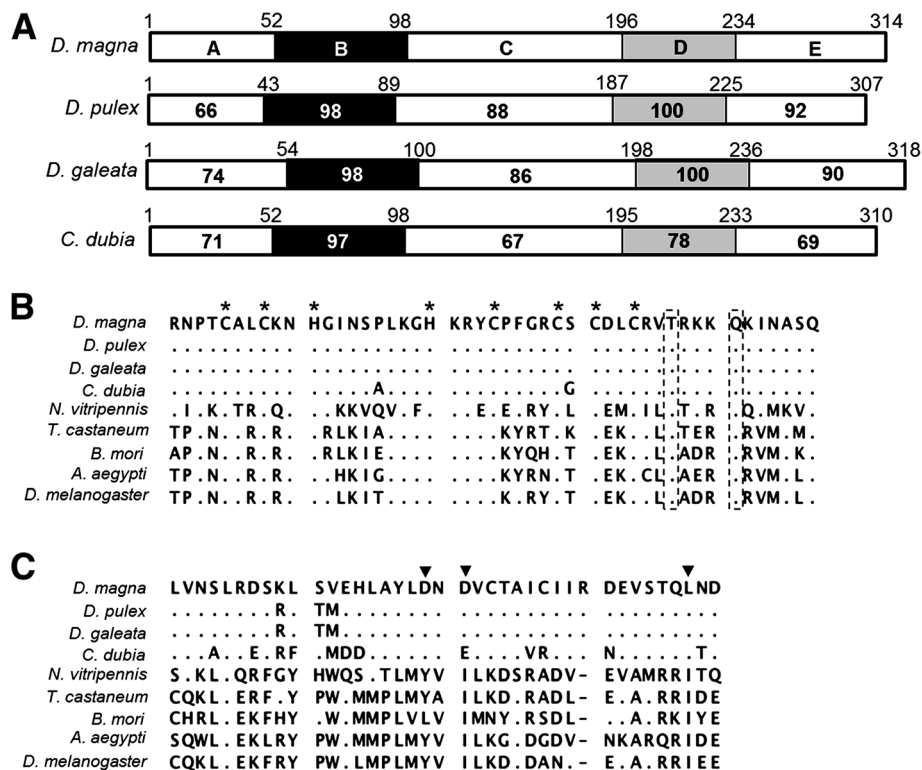
The DM-domain contains zinc chelating residues, and among the insects studied to date, two highly conserved amino acid residues, threonine and glutamine (Boxed in Figures 2B, 3B), distinguish the DM-domain of DSX from DM-domains of other insect proteins [43]. Therefore, we searched for similar highly conserved amino acid residues within the DSX DM-domains of cladocerans. Indeed, all zinc chelating residues are found to be conserved in the DM domains of DSX1 and DSX2 among the five cladoceran species (Figures 2B, 3B). Yet, although the threonine and glutamine residues were conserved in DSX2, the glutamine residue in DSX1 was substituted by arginine in all cladoceran species examined (Figures 2B, 3B). These results suggest that DSX1 in cladocerans might have gained a novel function

affecting sex determination by amino acid replacement after duplication of *dsx* in branchiopoda lineage.

Compared to the DM-domains, more amino acid variation is observed in alignments of the oligomerization-domains (Figures 2C, 3C). Dimerization, which enhances specific DNA binding, is mediated by several residues in a non-polar interface that is conserved within oligomerization-domains. Previous study has revealed that, in DSX2 of *D. magna*, two of three nonpolar amino acids indispensable for formation of the nonpolar interface are substituted with the polar acidic amino acid, aspartic acid [41]. This suggests that the daphniid DSX2 proteins are unable to dimerize and may not be functional or may have a different, unknown functions.

#### Sex specific expression of *dsx* genes in five cladoceran species

We previously reported that both *dsx* genes in *D. magna* were transcriptionally up-regulated in males and showed no sex-specific splice isoforms. We and others also reported that exposure to JH analogs reliably produces male daphniids [24,25]. Moreover, by using gene knock-



**Figure 3** Schematic diagrams of the DSX2 structures and its sequence comparison of DM- and oligomerization-domains. (A) Domain structures of the DSX2 of *Daphnia magna*, and identity with *D. pulex*, *D. galeata* and *C. dubia*. DM- and oligomerization-domains are indicated by black and gray boxes, respectively. (B, C) Alignment of predicted amino acid sequences of DM- and oligomerization-domains of DSX2 from four daphniids, respectively. Amino acid sequences were aligned using CLUSTAL-X. Dotted boxes highlight the conserved threonine (T) and glutamine (Q) residues in DSX2. Asterisks indicate the zinc chelating residues. Position of non-polar amino acids important in formation of the hydrophobic interface between oligomerization-domains in *Drosophila* DSX are indicated with solid triangles [31,41].

down (RNAi) and overexpression methods in *D. magna* [40,41], we discovered that *DapmaDsx1* is necessary and sufficient for sex determination in *D. magna*, whereas the tandemly duplicated *DapmaDsx2* gene does not determine sex, even though its transcription is equally sex-biased [41].

In this study, we confirmed that expression patterns of *DapmaDsx1* and *DapmaDsx2* homologous genes are conserved in other cladocerans, by studying steady state mRNA levels for *dsx* transcripts in adult females and males by quantitative PCR. We found that the mRNA levels of these *dsx* genes range from seven to forty fold greater in males than in females (Figure 5). Our results indicate that the sexual dimorphic mRNA expression patterns of *dsx* are conserved among daphniids and *Moina*.

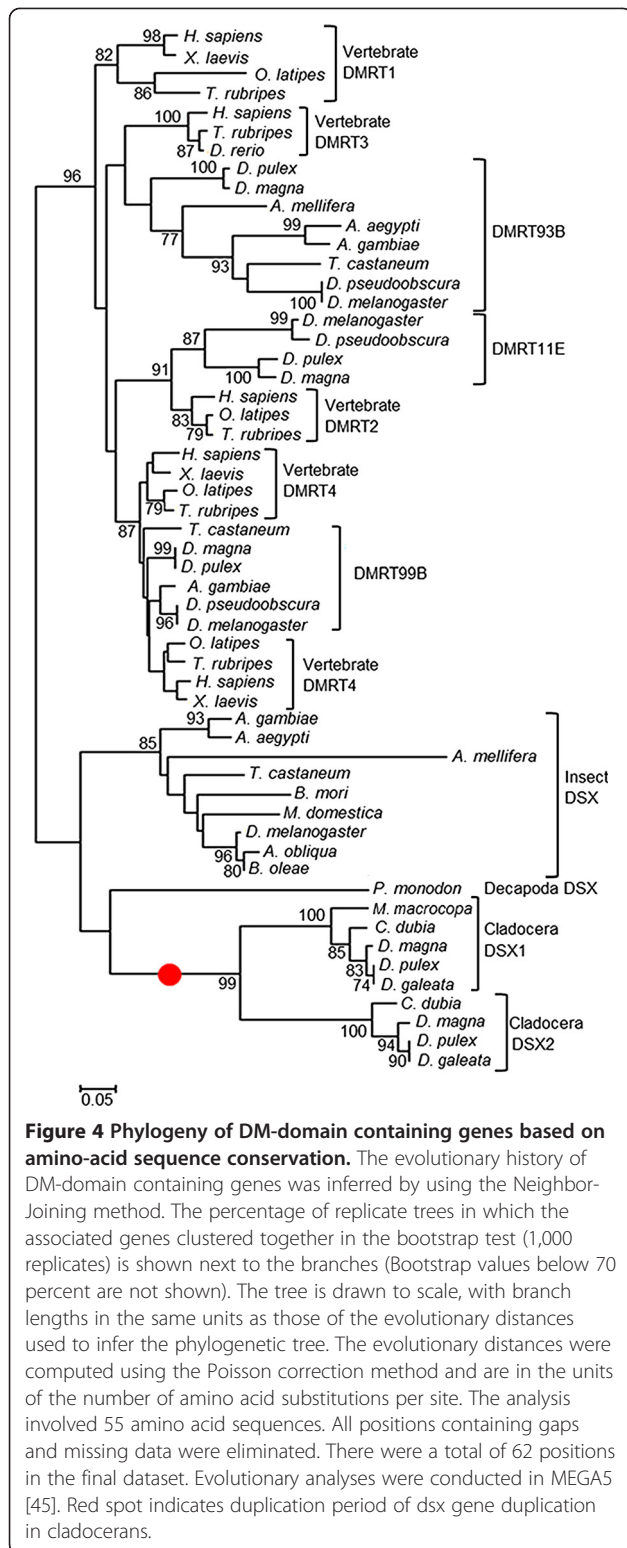
#### Annotation of *dsx* gene structures in *D. Magna* and *D. Pulex*

We previously cloned and described the mRNA transcripts of the *DapmaDsx1* and *DapmaDsx2* genes [41]. *DapmaDsx1* produces two mRNA, *DapmaDsx1-α* and *DapmaDsx1-β*, which are expressed in both sexes and differ only in their 5' UTR, while *DapmaDsx2* produces only one mRNA transcript. The *D. pulex* draft genome

sequence was recently published [42], and the *D. magna* genome sequencing project is currently in progress by the *Daphnia* Genomics Consortium. The *DapmaDsx1-α*, *DapmaDsx1-β*, and *DapmaDsx2* mRNA transcripts were aligned to the genome assemblies and used to annotate the *dsx1* and *dsx2* gene models in the *D. magna* and *D. pulex* genomes (Additional file 4).

The *D. magna dsx* gene cluster is located on scaffold 2190 of the *D. magna* genome assembly v2.4 with a ~10 Kbp intergenic region between the *DapmaDsx1* (~16.1 Kbp length) and *DapmaDsx2* (~1.6 Kbp length) genes (Additional file 4A). The second exon of the *DapmaDsx1-β* mRNA transcript fell within an assembly gap in scaffold 2190, but was located on scaffold 521. We conclude that scaffold 521 (~5.8 Kbp length) characterizes a ~3.1 Kbp gap in scaffold 2190, located in the intragenic region of *DapmaDsx1*.

The *D. pulex dsx* gene cluster is located on scaffold 32 of the *D. pulex* genome assembly v1.1 with a ~9.6 Kbp intergenic region between the *DapmaDsx1* (~21.5 Kbp length) and *DapmaDsx2* (~1.6 Kbp length) genes (Additional file 4B). The *D. pulex* v1.1 gene model predictions did not correctly identify the *dsx1* and *dsx2*



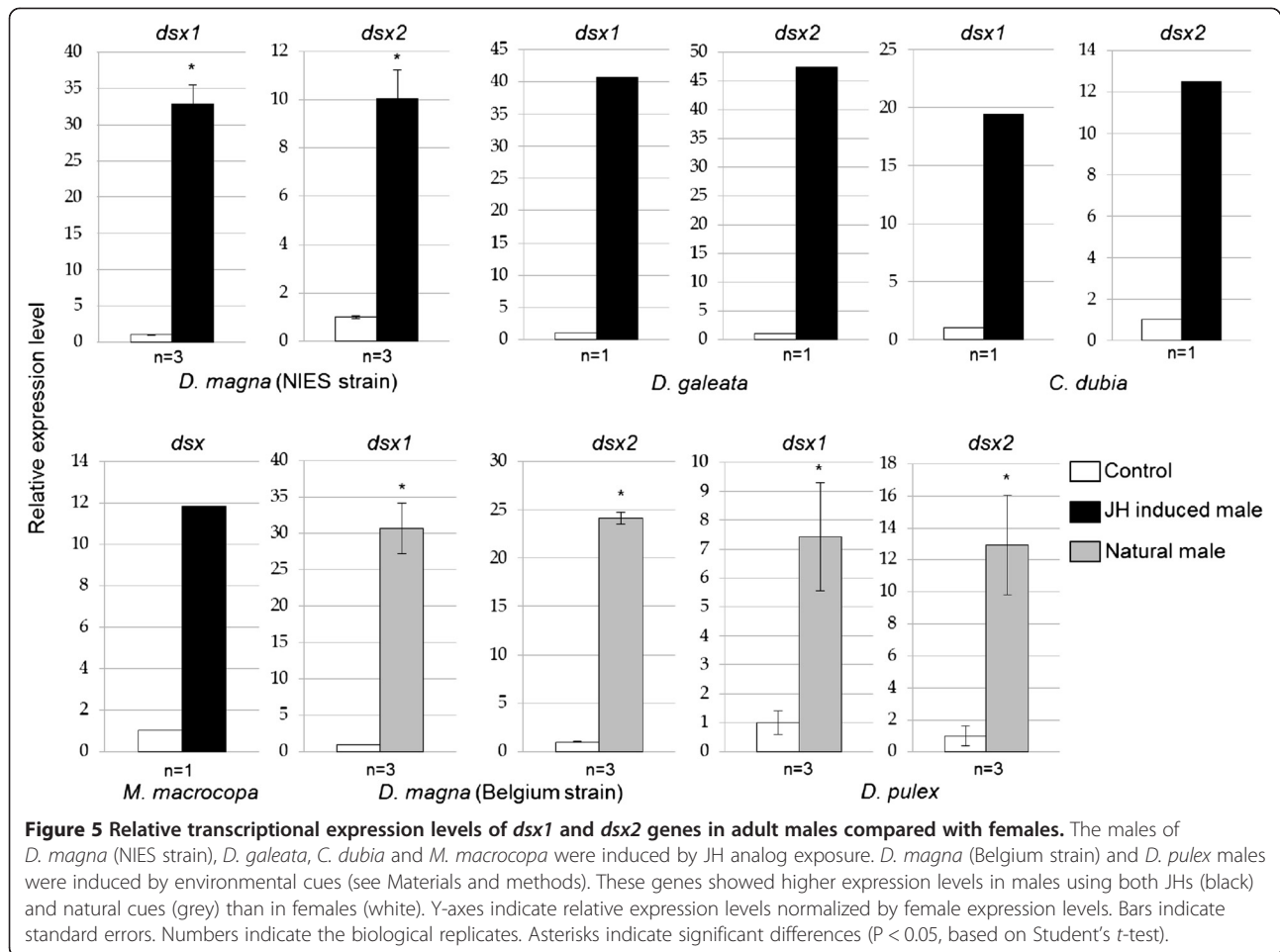
duplicate gene cluster. Our annotations improved the *dsx* gene models in both *D. magna* and *D. pulex* genomes.

#### Potential transcriptional regulatory elements in the 5' upstream promoter regions of the *dsx* genes

To further annotate putative functional and conserved elements of the *dsx* genes, we searched and compared transcriptional promoter regions of the genes in *D. magna* and *D. pulex*. 1.0 Kbp upstream of the transcription start site (TSS) of *dsx1-α*, *dsx1-β*, and *dsx2* were extracted as transcriptional regulatory regions. This interval spans the predicted intergenic region between adjacent loci. Promoter sequences are challenging for multiple alignment algorithms, because upstream regulatory regions are not well conserved compared to protein coding regions of genes [47,48]. We aligned orthologous promoter sequences from *D. magna* and *D. pulex* using Pro-Coffee [47], an alignment algorithm specifically designed for homologous promoter regions (Additional files 5, 6, 7). The *DapmaDsx1-α* and *DappuDsx1-α* promoter alignment showed 46% sequence identity (Additional file 5), the *DapmaDsx1-β* and *DappuDsx1-β* promoter alignment showed 60% sequence identity (Additional file 6), and the *DapmaDsx2* and *DappuDsx2* promoter alignment showed 62% sequence identity (Additional file 7). The promoter regions of *dsx1* and *dsx2* have much less conservation than their respective protein coding regions, which have 84% and 83% sequence identity, respectively (92% and 84% sequence identity at synonymous sites on protein coding region, respectively).

We characterized putative known transcription factor binding sites (TFBS) in the *dsx* upstream promoter regions using transcription factor map (TF-map) alignments [48] between orthologous *dsx* promoter regions in *D. magna* and *D. pulex*, based on matches to position frequency matrices (PFMs) from JASPAR [49] and TRANSFAC [50] TFBS databases. The optimal *dsx1-α* promoter TF-map alignment contains 20 putative known TFBSs (Figure 6A, Additional file 8). The optimal *dsx1-β* promoter TF-map alignment contains 31 putative known TFBSs (Figure 6C, Additional file 9). The optimal *dsx2* promoter TF-map alignment contains 39 putative known TFBSs (Figure 6E, Additional file 10). The positions of the putative TFBS pairs (between orthologous promoters) are well aligned when annotated onto the promoter sequence Pro-Coffee alignments (Figure 6), suggesting these predicted putative TFBSs are conserved between *D. magna* and *D. pulex*.

We compared the number of unique predicted transcription factors (TFs) shared amongst the *dsx* promoter regions (Figure 7A). In total, 32 unique TFs were predicted in the *dsx* promoters, half (16) are present in at least two of the promoters (Additional file 11). Six unique



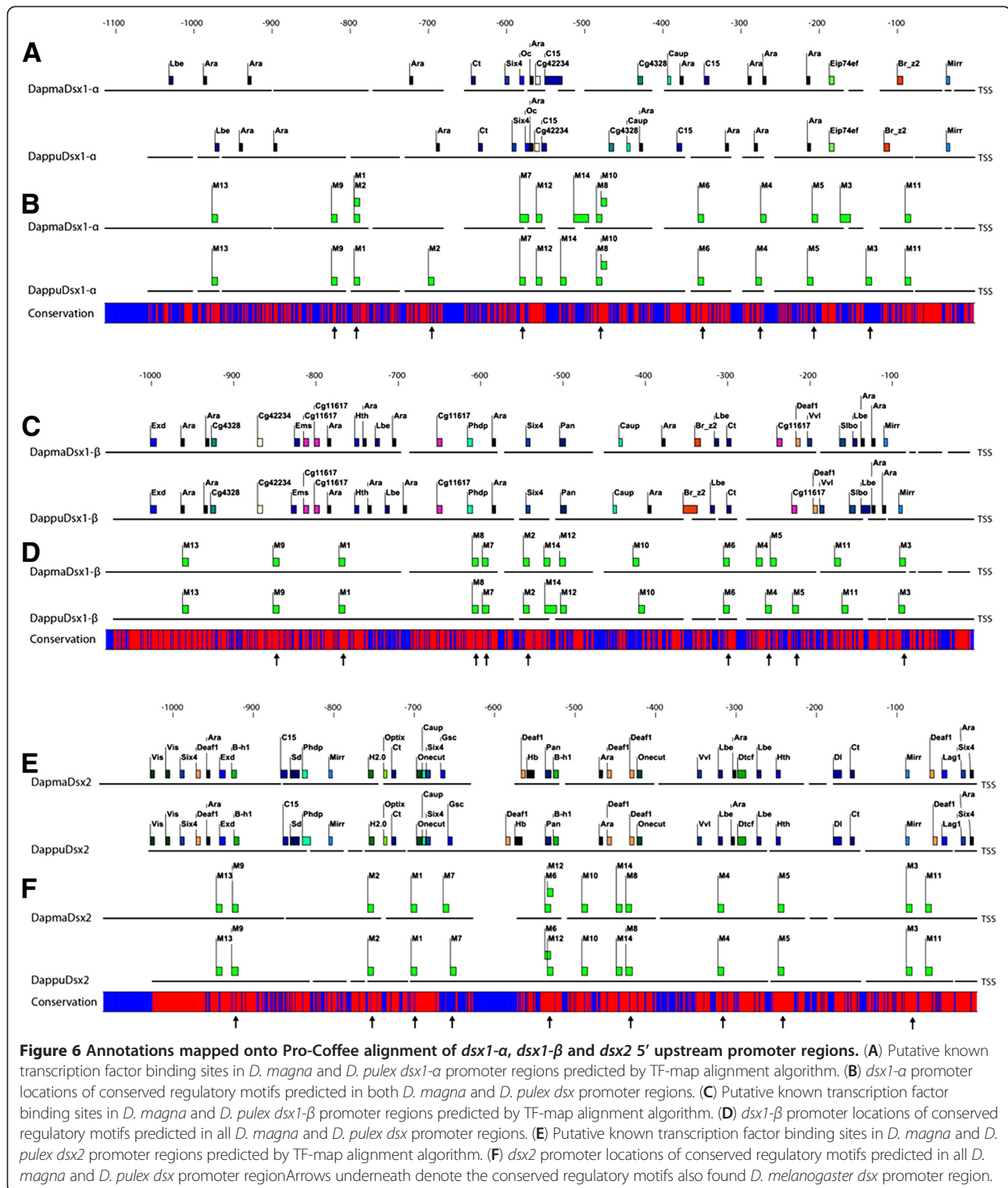
TFs were predicted in all three *dsx* promoters; an additional six unique TFs were also shared between *dsx1-β* and *dsx2* promoter regions. Interestingly, 11 unique TFs were predicted in the *dsx2* promoter but not in either *dsx1* promoters. We previously showed that *dsx1-β* mRNA expression levels are three times greater than expression levels of *dsx1-α* during male *D. magna* development, and that transcription of *dsx2* is even greater than both *dsx1* mRNAs combined [41]. The shared TF motifs suggest a duplication history involving at least part of the 5' region upstream of *dsx1-β*, while numeric differences observed among *dsx* promoter regions are reflective of these expression level differences. Based on the promoter sequence conservation between *D. magna* and *D. pulex*, and the greater number of predicted TFs, the *dsx1-β* promoter seems to be the more widely used and evolutionarily conserved, while the *dsx1-α* promoter has experienced more sequence divergence and loss of TFBSs.

Since we previously reported that *DapmaDsx1* and *DapmaDsx2* are paralogs, and that both *DapmaDsx1* and *DapmaDsx2* mRNAs are transcriptionally up-regulated in male *D. magna* [41], we searched for *de novo* conserved

motifs present in all *dsx* promoter regions in *D. magna* and *D. pulex* (*DapmaDsx1-α*, *DappuDsx1-α*, *DapmaDsx1-β*, *DappuDsx1-β*, *DapmaDsx2*, and *DappuDsx2*), without reference to TFBS sequence databases. We identified 14 conserved motifs in the *Daphnia dsx* promoters (Additional file 12), which can later be functionally investigated as potential TFBSs and/or potential transcriptional promoters of *Daphnia dsx*. The motifs were labeled M1 through M14 and annotated onto the *D. magna/D. pulex dsx* promoter alignments (Figures 6B, 6D and 6F). Motifs 1 through 9 were also found in the *D. melanogaster dsx* upstream promoter region, supporting the conservation and potential regulatory functions of these motifs.

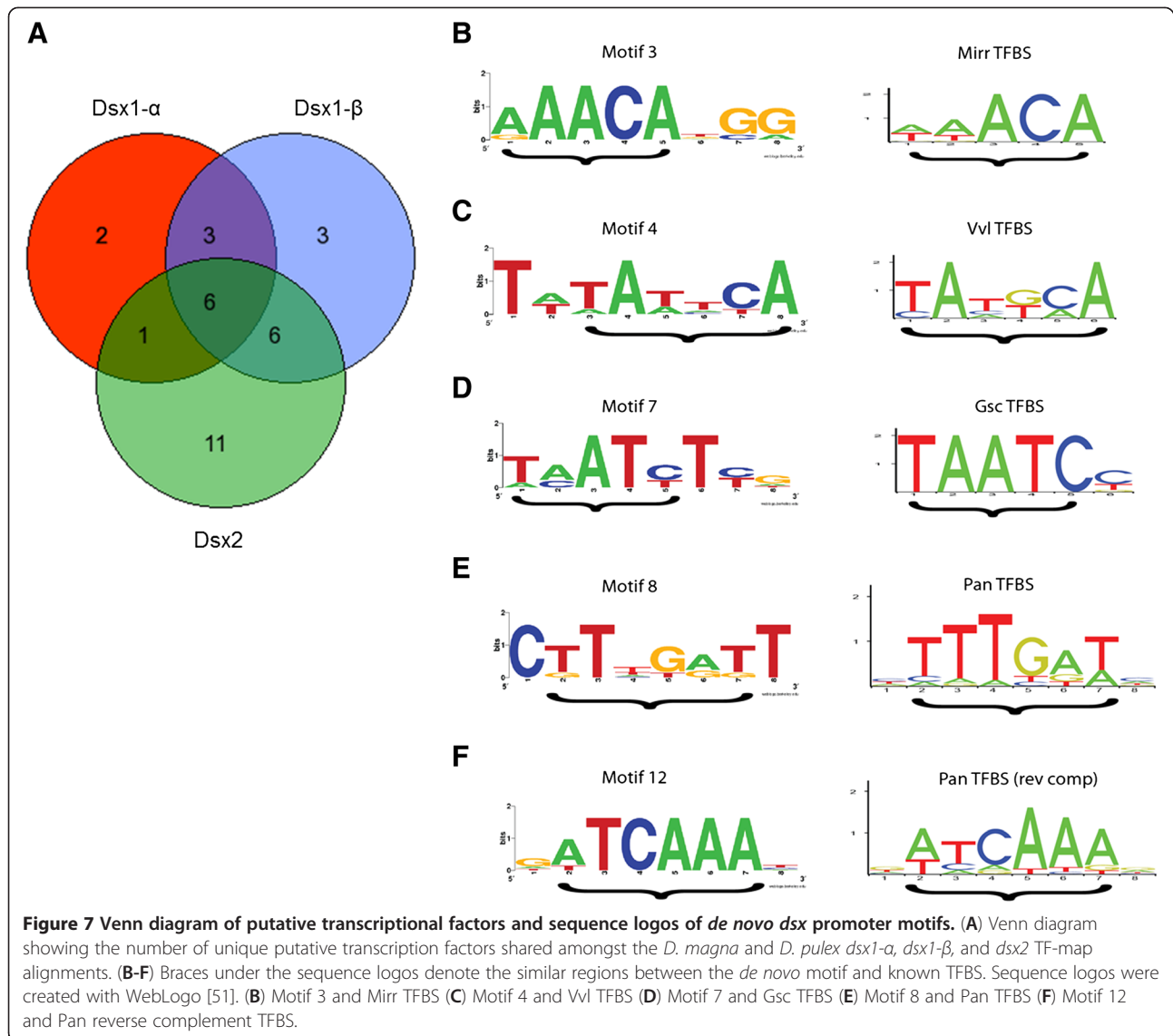
In order to assess whether these *de novo* conserved motifs are similar to any known TFBSs, we scanned the individual motif sequences for matches to TFBS PFMs and compared each motif consensus sequence to known TFBS consensus sequences. Several of the conserved motifs showed similarity to known TFBSs (Figures 7B-F). Motif 3 matches the TFBS of Mirr, a homeobox transcription factor in the Iroquois complex of transcription factors, which is predicted in all three *dsx* promoter TF-map alignments (Figure 7B). Motif 4 matches the TFBS of





Vvl, a homeobox transcription factor which is predicted in both *dsx1-β* and *dsx2* TF-map alignments (Figure 7C). Motif 7 matches the TFBS of Gsc/Bcd/Oc, three homeobox transcription factors with nearly identical binding sites (Figure 7D), with four of the Motif 7 sequences

matching the Gsc/Bcd/Oc consensus TAATC exactly. Gsc was also predicted in the *dsx2* TF-map alignment, and Oc was predicted in the *dsx1-α* TF-map alignment. Motif 8 matches the TFBS of Pan, a high mobility group transcription factor, which is predicted in both *dsx1-β* and *dsx2*



TF-map alignments (Figure 7E). Motif 12 also matches the TFBS of Pan, but with the reverse complement of the binding site (Figure 7F). The similarity of these *de novo* conserved motifs to known TFBSs that were also predicted by the TF-map alignment further supports our results describing the regulatory elements of the *Daphnia dsx* genes.

## Conclusions

In summary, we identified the orthologs of *DapmaDsx1* and *DapmaDsx2* genes from closely related species belonging to two cladoceran families and three genera: *D. pulex*, *D. galeata*, *C. dubia* (Daphniidae) and *M. macrocopa* (Moinidae), with highly conserved DM- and oligomerization-domains. All five species examined exhibited sexually dimorphic expression pattern of *dsx* genes, suggesting that these genes may have similar functions for sex

determination in cladocerans. Daphniids are unique animals that exhibit ESD and are; therefore, attractive for understanding the evolution of ESD. We also identified potential regulatory motifs and transcription factor binding sites in the putative promoter regions of these genes in *D. magna* and *D. pulex*. This information will facilitate future study of molecular mechanisms underlying sex-determination in cladocerans.

## Methods

### *Daphnia* strain and culture conditions

Isoclonal strains of *D. magna* (NIES and Belgium strains), *D. galeata*, *C. dubia* and *M. macrocopa* were obtained from the National Institute for Environmental Studies (NIES; Tsukuba, Japan) [25,52]. *D. pulex* was obtained from Hokkaido University, Sapporo, Japan [53], and maintained as described previously [27]. Briefly, culture

medium was prepared using charcoal-filtered tap water and cultures of 20 individuals per liter were incubated at  $21 \pm 1^\circ\text{C}$  under a 14-h light/10-h dark photoperiod. A 0.01-ml suspension of  $4.3 \times 10^8$  cells  $\text{ml}^{-1}$  *Chlorella* (*Chlorella vulgaris*) was added daily to each culture. The water hardness was between 72 and 83  $\text{mg L}^{-1}$ , the pH between 7.0 and 7.5, and the dissolved oxygen concentration between 80 and 99%. To obtain natural male embryos, adult *D. magna* (Belgium clone) was reared in crowded conditions, and *D. pulex* was incubated at  $18^\circ\text{C}$  under a 10-h light/14-h dark photoperiod, and a 0.01-ml suspension of  $4.3 \times 10^8$  cells  $\text{ml}^{-1}$  *Chlorella* was added every two days. To obtain male embryos of *D. magna* (NIES clone), *D. galeata*, *C. dubia* and *M. macrocopa*, (in which natural males are rarely seen) adult individuals (about 2 weeks of age) were chemically induced to produce males by treating them with a synthetic JH analog, fenoxycarb (1  $\mu\text{g/L}$ ) (technical grade 96.6% pure, Wako Pure Chemical Industries, Ltd., Osaka, Japan) [25]. We confirmed the offspring sexes by the length of the first antenna [19] observed and photographed using a Leica MZ APO dissecting microscope (Leica, Mannheim, Germany).

#### Cloning of *dsx* genes

The nucleotide sequences of the *D. magna dsx* genes were used for designing primers that amplify *dsx* genes in four different species. The harvested animals were homogenized using the Micro Smash MS-100R (Tomy, Tokyo, Japan). Total RNA was extracted with ISOGEN reagent according to the manufacturer's protocol (NIPPON GENE, Tokyo, Japan). Poly (A) + RNA was isolated from purified total RNA using Fast Track (Life Technologies, Carlsbad, CA USA) and converted to cDNA using Superscript III and random primers (Life Technologies) according to the manufacturer's protocol. cDNAs corresponding to the EST sequences were obtained by PCR amplification, and full-length cDNAs were obtained by RACE (Cap Fishing; SeeGene, Seoul, South Korea) using the oligonucleotide sequences as shown in Additional file 13.

#### Phylogenetic analysis of the DM-domain genes

A phylogenetic tree of DM-domain genes including newly cloned *D. pulex*, *D. galeata*, *C. dubia* and *M. macrocopa dsx* genes were constructed using amino acid sequences of DM-domain genes used in the previous study [38] (Additional file 14). A multiple alignment was constructed using Clustal W [45,54] with the following settings (pairwise alignment parameters: gap opening penalty 15, gap extension penalty 6.66, identity protein weight matrix; multiple alignment parameters: delay divergent cutoff 30%, gap separation distance 4). Phylogenetic reconstruction was performed using the maximum likelihood and the neighbor-joining methods implemented in MEGA version 5 [45].

#### Quantitative PCR

Two to three weeks old male and female animals of the five cladoceran species were used in quantitative-PCR (q-PCR) assays of gene expression levels. mRNAs were quantified as described previously [38]. Animals were washed briefly and soaked in RNAlater (Life Technologies) for 10 min. Total RNA was purified and cDNA was synthesized as described above except that a random oligonucleotide was used as the primer. PCR was performed in an ABI Prism 7000 (Life Technologies) using the SYBR-Green PCR core reagents kit (Life Technologies), in the presence of appropriate primers. PCR amplifications were performed using the following conditions: 2 min at  $50^\circ\text{C}$  and 10 min at  $95^\circ\text{C}$ , followed by a total of 40 two-temperature cycles (15 s at  $95^\circ\text{C}$  and 1 min at  $60^\circ\text{C}$ ).

The primers were chosen to amplify short PCR products of 150 bp; the primer sequences are listed in Additional file 15. Ribosomal protein L32 gene was used for normalization purposes [21,55]. Data acquisition and analysis were performed by ABI Prism 7000 SDS software ver. 1.1 (Life Technologies). The baseline and threshold for the Ct (cycle threshold) were set automatically. Each gene was tested in technical triplicate samples by the relative standard curve method. In the case of *D. magna* and *D. pulex*, each experiment was performed in biological triplicate and statistical analyses were applied.

#### *dsx* gene annotations

The genomic locations of *DapmaDsx1- $\alpha$* , *DapmaDsx1- $\beta$* , and *DapmaDsx2* mRNA transcripts were identified using BLASTN sequence similarity searches against a reference blast database of the *D. magna* genome assembly v2.4 scaffolds, and against a reference blast database of the *D. pulex* genome assembly v1.1 scaffolds. The best BLAST matches were analyzed and used to map the gene exons onto the *D. magna* and *D. pulex* scaffolds. ESTs mapped onto the genome assembly with PASA [56], microarray tiling path expression data, and RNA-Seq data from wFleaBase [57] were used as supporting evidence for exon annotations. The *dsx* gene annotation figures were created with AnnotationSketch [58] (Figure 6).

#### Transcription factor map alignments

Matscan [48] was used to search for matches to 125 JASPAR core insect TFBS matrices and 44 TRANSFAC insect TFBS matrices in each *dsx* promoter region in *D. magna* and *D. pulex*. A threshold of 0.85 matrix similarities was used to find TFBS matrix matches in the promoter sequences. For each promoter sequence, the collection of TFBS matrix matches is referred to as its TF-map. The TF-maps for each promoter sequence can be found in the following Additional files: *DapmaDsx1- $\alpha$*  (Additional file 16), *DappuDsx1- $\alpha$*  (Additional file 17),

*DapmaDsx1-β* (Additional file 18), *DappuDsx1-β* (Additional file 19), *DapmaDsx2* (Additional file 20), *DappuDsx2* (Additional file 21). Meta [48] was then used to find the best meta-alignment of the orthologous promoters TF-maps (with parameters:  $a = 0.5$ ,  $l = 0.1$ ,  $m = 0.1$ ).

#### de novo conserved promoter motifs

The 5' 1.0 Kbp upstream region was extracted from all *D. pulex* gene models and used to create a background frequency model for 8 bp length motifs in *Daphnia* promoter regions. WeederH [59] was used to search for conserved regulatory motifs of length 8 present in all six *dsx* promoters in *D. magna* and *D. pulex*. The WeederH algorithm measures conservation based on the sequence conservation as well as the motif occurrence's positions relative to the TSS. WeederH produces a  $\chi^2$  score assessing how conserved the motif is compared to the rest of the homologous sequences. We used a  $\chi^2$  score threshold of 3, discarding motifs with a  $\chi^2$  score less than 3.

#### Additional files

**Additional file 1: RT-PCR of oligonucleotides corresponding to highly conserved region of *dsx1* (A) and *dsx2* (B).** The amplified cDNAs were analyzed by agarose gel electrophoresis. Lane M: molecular weight marker. Lane 1 to 10: *D. magna* (female), *D. magna* (male), *D. pulex* (female), *D. pulex* (male), *D. galeata* (female), *D. galeata* (male), *C. dubia* (female), *C. dubia* (male), *M. macrocopa* (female), *M. macrocopa* (male).

**Additional file 2: Estimation of evolutionary divergence between the DSX1 except for DM- and oligomerization-domain and COI sequences.** The number of amino acid differences per site between sequences are shown. The analysis involved 5 amino acid sequences. All positions containing gaps and missing data were eliminated. There were total of 225 and 208 positions in the final dataset of DSX1 and COI, respectively. Evolutionary analyses were conducted in MEGA5 [45].

**Additional file 3: Estimation of evolutionary divergence between the DSX2 except for DM- and oligomerization-domain and COI sequences.** The number of amino acid differences per site between sequences are shown. The analysis involved 5 amino acid sequences. All positions containing gaps and missing data were eliminated. There were total of 210 and 208 positions in the final dataset of DSX2 and COI, respectively. Evolutionary analyses were conducted in MEGA5 [45].

**Additional file 4: Gene model annotations on the *D. magna* and *D. pulex* genome assembly.** (A) *D. magna dsx1* and *dsx2* gene model annotations on the *D. magna* genome assembly. (B) *D. pulex dsx1* and *dsx2* gene model annotations on the *D. pulex* genome assembly. Figures were created with AnnotationSketch [58].

**Additional file 5: Nucleotide sequence comparison of *dsx1-a* promoter regions in *D. magna* and *D. pulex*.** Pro-Coffee alignment of *Dsx1-a* 1.0 Kbp upstream promoter region from *D. magna* and *D. pulex*.

**Additional file 6: Nucleotide sequence comparison of *dsx1-β* promoter regions in *D. magna* and *D. pulex*.** Pro-Coffee alignment of *dsx1-β* 1.0 Kbp upstream promoter region from *D. magna* and *D. pulex*.

**Additional file 7: Nucleotide sequence comparison of *dsx2* promoter regions in *D. magna* and *D. pulex*.** Pro-Coffee alignment of *dsx2* 1.0 Kbp upstream promoter region from *D. magna* and *D. pulex*.

**Additional file 8: *dsx1-a* TF-map alignment.**

**Additional file 9: *dsx1-β* TF-map alignments.**

**Additional file 10: *dsx2* TF-map alignments.**

**Additional file 11: TF-map alignments unique TFs comparison.**

**Additional file 12: de novo conserved regulatory motifs.**

**Additional file 13: Primer sequences for 5' and 3' RACE in *D. galeata*, *C. dubia* and *M. macrocopa*.**

**Additional file 14: Accession numbers of the sequences for phylogenetic analysis.**

**Additional file 15: Primer sequences for quantitative PCR.**

**Additional file 16: *DapmaDsx1-a* TF-map.**

**Additional file 17: *DappuDsx1-a* TF-map.**

**Additional file 18: *DapmaDsx1-β* TF-map.**

**Additional file 19: *DappuDsx1-β* TF-map.**

**Additional file 20: *DapmaDsx2* TF-map.**

**Additional file 21: *DappuDsx2* TF-map.**

#### Competing interests

The authors declare that they have no competing interests.

#### Authors' contributions

KT, YK, HM, HW, NT and TI designed the experiments; KT, YK, MS, NS, SM, HM, SO, YO, CH and TM performed the experiments; KT, HM, JKC, TI, SP and CJ analyzed the data; KT, HM, CJ, JKC and TI wrote the paper. All authors have read and approved the final manuscript.

#### Acknowledgments

The *D. magna* and *D. pulex* sequence data were provided by The Center for Genomics and Bioinformatics at Indiana University, which is supported in part by the METACyt Initiative of Indiana University, funded in part through a major grant from the Lilly Endowment, Inc., and distributed via wFleaBase in collaboration with Dr. Donald Gilbert and the *Daphnia* Genomics Consortium <https://wiki.cgb.indiana.edu/display/DGC/Home>. This work was partly supported by the Japan Society for the Promotion of Science (JSPS) Research Fellowship for Young Scientists. to KT and CH, the Sasakawa Scientific Research Grant from The Japan Science Society to KT, the Saito Hon-Kai Scientific Research Grant from The Saito Gratitude Foundation to KT, grants from the Ministry of Education, Culture, Sports, Science and Technology (TI), the Ministry of the Environment of Japan (TI), a grant of Long-Range Research Initiative by Japan Chemical Industry Association (TI) and a grant from National Institute for Basic Biology (TI).

#### Author details

<sup>1</sup>Okazaki Institute for Integrative Bioscience, National Institute for Basic Biology, National Institutes of Natural Sciences, and Department of Basic Biology, Faculty of Life Science, Graduate University for Advanced Studies (SOKENDAI), 5-1 Higashiyama, Myodaiji, Okazaki, Aichi 444-8787, Japan. <sup>2</sup>Department of Biotechnology, Graduate School of Engineering, Osaka University, 2-1 Yamadaoka, Suita, Osaka 565-0871, Japan. <sup>3</sup>Toyota Nishi High School, 14-65 Kosaka, Toyota, Aichi 471-0035, Japan. <sup>4</sup>National Institute for Environmental Studies, 16-2 Onogawa, Tsukuba, Ibaraki 305-8506, Japan. <sup>5</sup>The Center for Genomics and Bioinformatics, Indiana University, 915 East Third Street, Bloomington, IN 47405, USA. <sup>6</sup>Present address: School of Biosciences, University of Birmingham, Birmingham B15 2TT, UK.

Received: 29 September 2012 Accepted: 26 March 2013

Published: 10 April 2013

#### References

1. Marin I, Baker BS: The evolutionary dynamics of sex determination. *Science* 1998, **281**:1990-1994.
2. Zarkower D: Establishing sexual dimorphism: conservation amidst diversity? *Nat Rev Genet* 2001, **2**:175-185.
3. Bull JJ: Sex determining mechanisms: an evolutionary perspective. *Experientia* 1985, **41**:1285-1296.
4. Organ CL, Janes DE: Evolution of sex chromosomes in Sauropsida. *Integr Comp Biol* 2008, **48**:512-519.
5. Crews D, Bull JJ: Mode and tempo in environmental sex determination in vertebrates. *Semin Cell Dev Biol* 2009, **20**:251-255.



6. Korpelainen H: Sex ratios and conditions required for environmental sex determination in animals. *Biol Rev Camb Philos Soc* 1990, **65**:147–184.
7. Bull JJ: Evolution of environmental sex determination from genotypic sex determination. *Heredity* 1981, **47**:173–184.
8. Bulmer MG, Bull JJ: Models of polygenic sex determination and sex ratio control. *Evolution* 1982, **36**:13–26.
9. Chandler CH, Phillips PC, Janzen FJ: The evolution of sex-determining mechanisms: lessons from temperature-sensitive mutations in sex determination genes in *Caenorhabditis elegans*. *J Evol Biol* 2009, **22**:192–200.
10. Shoemaker CM, Crews D: Analyzing the coordinated gene network underlying temperature-dependent sex determination in reptiles. *Semin Cell Dev Biol* 2009, **20**:293–303.
11. Sanchez L: Sex-determining mechanisms in insects. *Int J Dev Biol* 2008, **52**:837–856.
12. Shukla JN, Nagaraju J: *Doublesex*: a conserved downstream gene controlled by diverse upstream regulators. *J Genet* 2010, **89**:341–356.
13. Gempe T, Beye M: Function and evolution of sex determination mechanisms, genes and pathways in insects. *BioEssays* 2011, **33**:52–60.
14. Shukla JN, Palli SR: Sex determination in beetles: Production of all male progeny by parental RNAi knockdown of *transformer*. *Sci Rep* 2012, **2**:srep00602.
15. Stenderup JT, Olesen J, Glenner H: Molecular phylogeny of the Branchiopoda (Crustacea)—multiple approaches suggest a 'diplostracan' ancestry of the Notostraca. *Mol Phylogenet Evol* 2006, **41**:182–194.
16. Olesen J: A phylogenetic analysis of the Conchostraca and Cladocera (Crustacea, Branchiopoda, Diplostraca). *Zool J Linn Soc* 1998, **122**:491–536.
17. Taylor DJ, Crease TJ, Brown WM: Phylogenetic evidence for a single long-lived clade of crustacean cyclic parthenogens and its implications for the evolution of sex. *Proc R Soc Lond B Biol Sci* 1999, **266**:791–797.
18. Kleiven OT, Larsson P, Hobæk A: Sexual reproduction in *Daphnia magna* requires three stimuli. *Oikos* 1992, **65**:197–206.
19. Olmstead AW, LeBlanc GA: Effects of endocrine-active chemicals on the development of sex characteristics of *Daphnia magna*. *Environ Toxicol Chem* 2000, **19**:2107–2113.
20. Mitchell SE: Intersex and male development in *Daphnia magna*. *Hydrobiologia* 2001, **442**:145–156.
21. Sagawa K, Yamagata H, Shiga Y: Exploring embryonic germ line development in the water flea, *Daphnia magna*, by zinc-finger-containing VASA as a marker. *Gene Expr Patterns* 2005, **5**:669–678.
22. Stross RG, Hill JC: Diapause induction in *Daphnia* requires two stimuli. *Science* 1965, **150**:1462–1464.
23. Hebert PD: Genotypic characteristics of cyclic parthenogens and their obligately asexual derivatives. *Experientia Suppl* 1987, **55**:175–195.
24. Olmstead AW, LeBlanc GA: Juvenoid hormone methyl farnesoate is a sex determinant in the crustacean *Daphnia magna*. *J Exp Zool* 2002, **293**:736–739.
25. Oda S, Tatarazako N, Watanabe H, Morita M, Iguchi T: Production of male neonates in four cladoceran species exposed to a juvenile hormone analog, fenoxycarb. *Chemosphere* 2005, **60**:74–78.
26. Banta AM, Brown LA: Control of sex in Cladocera. III. Localization of the critical period for control of sex. *Proc Natl Acad Sci USA* 1929, **15**:71–81.
27. Tatarazako N, Oda S, Watanabe H, Morita M, Iguchi T: Juvenile hormone agonists affect the occurrence of male *Daphnia*. *Chemosphere* 2003, **53**:827–833.
28. Kato Y, Kobayashi K, Oda S, Tatarazako N, Watanabe H, Iguchi T: Sequence divergence and expression of a *transformer* gene in the branchiopod crustacean, *Daphnia magna*. *Genomics* 2010, **95**:160–165.
29. Robinett CC, Vaughan AG, Knapp J-M, Baker BS: Sex and the single cell. II. There is a time and place for sex. *PLoS Biol* 2010, **8**:e1000365.
30. Burtis KC, Baker BS: *Drosophila doublesex* gene controls somatic sexual differentiation by producing alternatively spliced mRNAs encoding related sex-specific polypeptides. *Cell* 1989, **56**:997–1010.
31. Bayrer JR, Zhang W, Weiss MA: Dimerization of doublesex is mediated by a cryptic ubiquitin-associated domain fold: implications for sex-specific gene regulation. *J Biol Chem* 2005, **280**:32989–32996.
32. Shen MM, Hodgkin J: *mab-3*, a gene required for sex-specific yolk protein expression and a male-specific lineage in *C. elegans*. *Cell* 1988, **54**:1019–1031.
33. Raymond CS, Shamu CE, Shen MM, Seifert KJ, Hirsch B, Hodgkin J, Zarkower D: Evidence for evolutionary conservation of sex-determining genes. *Nature* 1998, **391**:691–695.
34. Raymond CS, Murphy MW, O'Sullivan MG, Bardwell VJ, Zarkower D: *Dmrt1*, a gene related to worm and fly sexual regulators, is required for mammalian testis differentiation. *Genes Dev* 2000, **14**:2587–2595.
35. Matson CK, Zarkower D: Sex and the singular DM domain: insights into sexual regulation, evolution and plasticity. *Nat Rev Genet* 2012, **13**:163–174.
36. Kopp A: *Dmrt* genes in the development and evolution of sexual dimorphism. *Trends Genet* 2012, **28**:175–184.
37. Williams TM, Carroll SB: Genetic and molecular insights into the development and evolution of sexual dimorphism. *Nat Rev Genet* 2009, **10**:797–804.
38. Kato Y, Kobayashi K, Oda S, Colbourne JK, Tatarazako N, Watanabe H, Iguchi T: Molecular cloning and sexually dimorphic expression of DM-domain genes in *Daphnia magna*. *Genomics* 2008, **91**:94–101.
39. Watanabe H, Tatarazako N, Oda S, Nishide H, Uchiyama I, Morita M, Iguchi T: Analysis of expressed sequence tags of the water flea *Daphnia magna*. *Genome* 2005, **48**:606–609.
40. Kato Y, Shiga Y, Kobayashi K, Tokishita S, Yamagata H, Iguchi T, Watanabe H: Development of an RNA interference method in the cladoceran crustacean *Daphnia magna*. *Dev Genes Evol* 2011, **220**:337–345.
41. Kato Y, Kobayashi K, Watanabe H, Iguchi T: Environmental sex determination in the branchiopod crustacean *Daphnia magna*: deep conservation of a *Doublesex* gene in the sex-determining pathway. *PLoS Genet* 2011, **7**:e1001345.
42. Colbourne JK, Pfrender ME, Gilbert D, Thomas WK, Tucker A, Oakley TH, Tokishita S, Aerts A, Arnold GJ, Basu MK, Bauer DJ, Cáceres CE, Carmel L, Casola C, Choi J-H, Detter JC, Dong Q, Dusheyko S, Eads BD, Fröhlich T, Geiler-Samerotte KA, Gerlach D, Hatcher P, Jogdeo S, Krijgsveld J, Kriventseva EV, Kültz D, Laforsch C, Lindquist E, Lopez J, et al: The ecoresponsive genome of *Daphnia pulex*. *Science* 2011, **331**:555–561.
43. Oliveira DCSG, Werren JH, Verhulst EC, Giebel JD, Kamping A, Beukeboom LW, Zande L: Identification and characterization of the *doublesex* gene of *Nasonia*. *Insect Mol Biol* 2009, **18**:315–324.
44. Volff J-N, Zarkower D, Bardwell VJ, Scharf M: Evolutionary dynamics of the DM domain gene family in metazoans. *J Mol Evol* 2003, **57**:241–249.
45. Tamura K, Peterson D, Peterson N, Stecher G, Nei M, Kumar S: MEGA5: molecular evolutionary genetics analysis using maximum likelihood, evolutionary distance, and maximum parsimony methods. *Mol Biol Evol* 2011, **28**:2731–2739.
46. Swain TD, Taylor DJ: Structural rRNA characters support monophyly of raptorial limbs and paraphyly of limb specialization in water fleas. *Proc R Soc Lond B Biol Sci* 2003, **270**:887–896.
47. Erb I, Iez-Vallinas JRG, Bussotti G, Blanco E, Eyras E, Notredame C: Use of ChIP-Seq data for the design of a multiple promoter-alignment method. *Nucleic Acids Res* 2012, **40**:e52.
48. Blanco E, Messeguer X, Smith TF, Guigo R: Transcription factor map alignment of promoter regions. *PLoS Comp Biol* 2006, **2**:e49.
49. Bryne JC, Valen E, Tang M-HE, Marstrand T, Winther O, Piedade I, Krogh A, Lenhard B, Sandelin A: JASPAR, the open access database of transcription factor-binding profiles: new content and tools in the 2008 update. *Nucleic Acids Res* 2008, **36**:102–106.
50. Matys V, Fricke E, Geffers R, Gößling E, Haubrock M, Hehl R, Hornischer K, Karas D, Kel AE, Kel-Margoulis OV, Kloos D-U, Land S, Lewicki-Potapov B, Michael H, Munch R, Reuter I, Rotert S, Saxel H, Scheer M, Thiele S, Wingender E: TRANSFAC(R): transcriptional regulation, from patterns to profiles. *Nucleic Acids Res* 2003, **31**:374–378.
51. Crooks GE, Hon G, Chandonia J-M, Brenner SE: WebLogo: a sequence logo generator. *Genome Res* 2002, **14**:1188–1190.
52. Oda S, Kato Y, Watanabe H, Tatarazako N, Iguchi T: Morphological changes in *Daphnia galeata* induced by a crustacean terpenoid hormone and its analog. *Environ Toxicol Chem* 2011, **30**:232–238.
53. Hiruta C, Nishida C, Tochinali S: Abortive meiosis in the oogenesis of parthenogenetic *Daphnia pulex*. *Chromosome Res* 2010, **18**:833–840.
54. Thompson JD, Higgins DG, Gibson TJ: CLUSTAL W: improving the sensitivity of progressive multiple sequence alignment through sequence weighting, position-specific gap penalties and weight matrix choice. *Nucleic Acids Res* 1994, **22**:4673–4680.

55. Kato Y, Kobayashi K, Oda S, Tatarazako N, Watanabe H, Iguchi T: **Cloning and characterization of the ecdysone receptor and ultraspiracle protein from the water flea *Daphnia magna***. *J Endocrinol* 2007, **193**:183–194.
56. Haas BJ, Delcher AL, Mount SM, Wortman JR RKS Jr, Hannick LI, Maiti R, Ronning CM, Rusch DB, Town CD, Salzberg SL, White O: **Improving the Arabidopsis genome annotation using maximal transcript alignment assemblies**. *Nucleic Acids Res* 2003, **31**:5654–5666.
57. Colbourne JK, Singan VR, Gilbert DG: **wFleaBase: the *Daphnia* genome database**. *BMC Bioinformatics* 2005, **6**:45.
58. Steinbiss S, Gremme G, Scharfer C, Mader M, Kurtz S: **AnnotationSketch: a genome annotation drawing library**. *Bioinformatics* 2009, **25**:533–534.
59. Pavesi G, Zambelli F, Pesole G: **WeederH: an algorithm for finding conserved regulatory motifs and regions in homologous sequences**. *BMC Bioinformatics* 2007, **8**:46.

doi:10.1186/1471-2164-14-239

**Cite this article as:** Toyota et al.: Molecular cloning of doublesex genes of four cladocera (water flea) species. *BMC Genomics* 2013 **14**:239.

**Submit your next manuscript to BioMed Central and take full advantage of:**

- Convenient online submission
- Thorough peer review
- No space constraints or color figure charges
- Immediate publication on acceptance
- Inclusion in PubMed, CAS, Scopus and Google Scholar
- Research which is freely available for redistribution

Submit your manuscript at  
[www.biomedcentral.com/submit](http://www.biomedcentral.com/submit)

