

4-1-2019

Kansas State University Libraries, issue 8 (summer 2019) - full issue

Kansas State University Libraries

Follow this and additional works at: <https://newprairiepress.org/ksulibraries>



Part of the [Higher Education Commons](#), and the [Library and Information Science Commons](#)



This work is licensed under a [Creative Commons Attribution-Noncommercial-Share Alike 4.0 License](#).

Recommended Citation

Kansas State University Libraries (2019) "Kansas State University Libraries, issue 8 (summer 2019) - full issue," *Kansas State University Libraries: Vol. 8*.

This Full Issue is brought to you for free and open access by New Prairie Press. It has been accepted for inclusion in Kansas State University Libraries by an authorized administrator of New Prairie Press. For more information, please contact cads@k-state.edu.

Kansas State University **LIBRARIES**



CLEAN SLATE
Creating a new Hale Library
for K-State's future.

in this issue 08 | SPRING 2019

3 Team Research

Two librarians forge a unique partnership with K-State's athletic training program

6 A New Beginning

Hale Library renovations take shape

16 K-State Keepsakes

Fifty years ago:
The Nichols Gymnasium fire

18 Hale Library's Collections

Boxed up and packed out

19 K-State Libraries News

Four key leadership roles filled

Kansas State University LIBRARIES

Lori Goetsch, Dean of Libraries
Chris Spooner, associate vice president of
development programs, KSU Foundation

Editorial Team

Darchelle Martin, managing editor
Sarah McGreer Hoyt, writer and editor
Tara Marintzer, senior graphic designer


Photos by K-State Libraries and
Kansas State University Photo Services

On the Cover

Our vision for the Dave & Ellie Everitt
Learning Commons on Hale Library's
renovated first floor.

Contact

libcomm@k-state.edu
785-532-3014
lib.k-state.edu

 lib.k-state.edu/magazine

 facebook.com/kstatelibraries

 twitter.com/kstatelibraries

<https://newprairiepress.org/ksulibraries/vol8/iss1/8>



Team Research

TWO LIBRARIANS FORGE A UNIQUE PARTNERSHIP WITH K-STATE'S ATHLETIC TRAINING PROGRAM

BY SARAH MCGREER HOYT

Cindy Logan and Melia Erin Fritch are friends, office mates and librarians. They're also devoted professors. They don't just help students complete assignments; they help them become researchers equipped to excel in their chosen professions.

Their areas of expertise differ: Logan works with students and faculty in public health fields, while Fritch is a social sciences librarian who specializes in curriculum development and instructional assessment. But over the last six years, the duo has combined forces to create a unique partnership with K-State's athletic training program.

It started in spring 2013 when Logan visited an upper-level class to prepare them for a research assignment.

"Early on I realized that they lacked some foundational skills," Logan said. "We forget that just because students grew up with the internet, they don't automatically know how to find or evaluate sources. Honestly, it's harder now than it's ever been."

Academic librarians teach research skills in classrooms across campus to address that challenge. In fact, K-State's librarians often collaborate with other faculty members and become co-teachers or research partners.

Fritch cultivated the seeds for such a relationship in summer 2013 at a higher education workshop. For her final project, she collaborated with K-State's Shawna Jordan, former athletic training education program director and current assistant dean of students in the College of Human Ecology.

"As educational program standards changed to include evidence-based medicine, I felt it was important to bring in experts who could assist with building the students' knowledge of research," Jordan said. "Involving the librarians was a natural fit: Their expertise enhances our content areas, and they introduce students to important resources in support of the research-based assignments within the curriculum."



Above: Athletic training program students Tia Breckenridge, Ray Adams and Talyn Kleweno. Left: Librarians Melia Fritch and Cindy Logan take research instruction from the library to the training room.

Fritch and Jordan mapped out a framework: Librarians would meet with students early on to teach research basics. Then, they would reconnect with the students at key points during the five following semesters to introduce increasingly challenging research experiences.

“Shawna and I asked ourselves, ‘How can the librarians maximize their impact at strategic points during the students’ careers so that they

are prepared to enter the athletic training field?’” Fritch said. “It’s a very dynamic profession—best practices are evolving continuously. Students need to be confident that they’re selecting the right treatment in any given scenario, and in order to do that, they have to have exceptional research skills.”

Creating great researchers has far-reaching effects for the health of the athletic training program, too.

“Our graduates have to pass an athletic training certification examination,” Jordan said. “Not only that, but in order for K-State’s athletic training program to receive national accreditation, we have to demonstrate that our students have a strong working knowledge of evidence-based medicine.”

Those requirements make the partnership with the librarians a natural fit.

“Sometimes it’s hard to get professors to devote class time to teaching research skills,” Fritch said. “With the athletic training program we can say, ‘You have several standards that you have to meet for accreditation, and if you work with us, we can help you satisfy most of them.’”

Of course, while Fritch initiated the new partnership, Logan is the health sciences librarian, so she has refined and executed the masterplan.



“THESE AREN’T JUST MEANINGLESS RESEARCH ASSIGNMENTS. CINDY HELPS US MASTER A KEY TOOL THAT ATHLETIC TRAINERS USE IN THEIR PROFESSIONAL LIVES.”

— TAYLOR SMITH, SENIOR

“We worked with our instructional design librarian, Joelle Pitts, to build online assignments and quizzes that arm students with the basics,” Logan said. “By the time they’re done, they know how to cite articles using APA style; they know how to identify and avoid plagiarism; and they know how to paraphrase a research resource appropriately.”

In three different courses taught in subsequent semesters, Logan introduces more advanced research knowledge, explaining what it means to engage in evidence-based practice and how to complete a systematic review.

“In many ways, Cindy’s a co-facilitator now,” Fritch said. “It works, but not without a lot of effort and time on her part.”

“Leave it to Melia to create more work for me,” Logan joked. “Really, though, the athletic training instructors, Jenn MacFadyen and Morgan Rakestraw, are a big part of the reason we’ve been so successful. They’re supportive of the partnership and as passionate about teaching as we are.”

To learn more, we asked several athletic training majors about their experiences working with Logan.

The students’ career goals and athletic experiences vary. Some want to be athletic trainers at the high school or college level; others want to attend a physical therapy graduate program. They’ve participated in everything from cheerleading to soccer, but they’ve all recovered from an injury.

And they all understand that conducting research will be part of treating their own athletes’ injuries effectively.

“When we were working on our research assignment, I think I emailed Cindy every other day,” junior Tia Breckenridge, Arkansas City, Kan., said. “She helps with finding sources but also explains what to look for when we’re reading the material and the best way to integrate the information.”

Students also talked about Logan’s instrumental guidance in creating PICO statements, a specialized research process that athletic trainers use in their everyday practice.

EVIDENCE-BASED PRACTICE

starts with asking clinically relevant questions that affect patient care. Once the practitioner formulates a question, he or she must review and apply existing research. Librarians are uniquely qualified to teach the foundational research skills key to engaging in successful evidence-based practice.



During one of her clinical rotations, senior Taylor Smith, Manhattan, worked 30 hours a week with the men's basketball team. "I saw my supervisors incorporating these exact same research processes as they assessed the players' injuries," Smith said. "These aren't just meaningless research assignments. Cindy helps us master a key tool that athletic trainers use in their professional lives."

MacFadyen agreed that the librarians are an invaluable part of her team.

"I can't put into words how much

Cindy and Melia's dedication means to our program," she said. "I can speak to the technical side of

"WHEN THE KEY CONCEPTS AND SKILLS THAT THE PROFESSORS WANT TO TEACH LINE UP PRECISELY WITH THE LIBRARY PROFESSION'S STATED TEACHING GOALS, THEN IT'S UNDENIABLE THAT WE HAVE A LOT TO OFFER IN THE CLASSROOM."

— MELIA ERIN FRITCH



putting together well-researched and well-executed assignments and projects."

Of course, not all university classes lend themselves to such an intensive partnership. But Fritch and Logan's collaboration with athletic training shows that the return on investment can be significant. In fact, they have started to use this model in other programs, including Communication Sciences and Disorders.

"When the key concepts and skills that the professors want to teach line up precisely with the library profession's stated teaching goals, then it's undeniable that we have a lot to offer in the classroom," Fritch said.

athletic training, while Cindy speaks to best practices for finding, using and formatting reliable, accurate information. As a result, students are

Cindy Logan meets with athletic training students like Taylor Smith and Liz Hildreth multiple times throughout their academic careers to help them tackle increasingly challenging research assignments.



A New BEGINNING



**A BLANK CANVAS.
LOFTY ASPIRATIONS. AN INSPIRED VISION.**

BY SARAH MCGREER HOYT





The Dave and Ellie Everitt Learning Commons will be filled with collaborative seating arrangements and technology-equipped, reservable study rooms, a top request from K-State students.

How many times in our lives do we have a blank canvas?

Here: Start over. Dream big. Create something new, something better.

The first four floors of Hale Library are empty. The damage from the May 22 fire has been torn out, scraped away, scrubbed off.

Without carpet, furnishings, technology, books and—most

importantly—people, the spaces feel cavernous and cold.

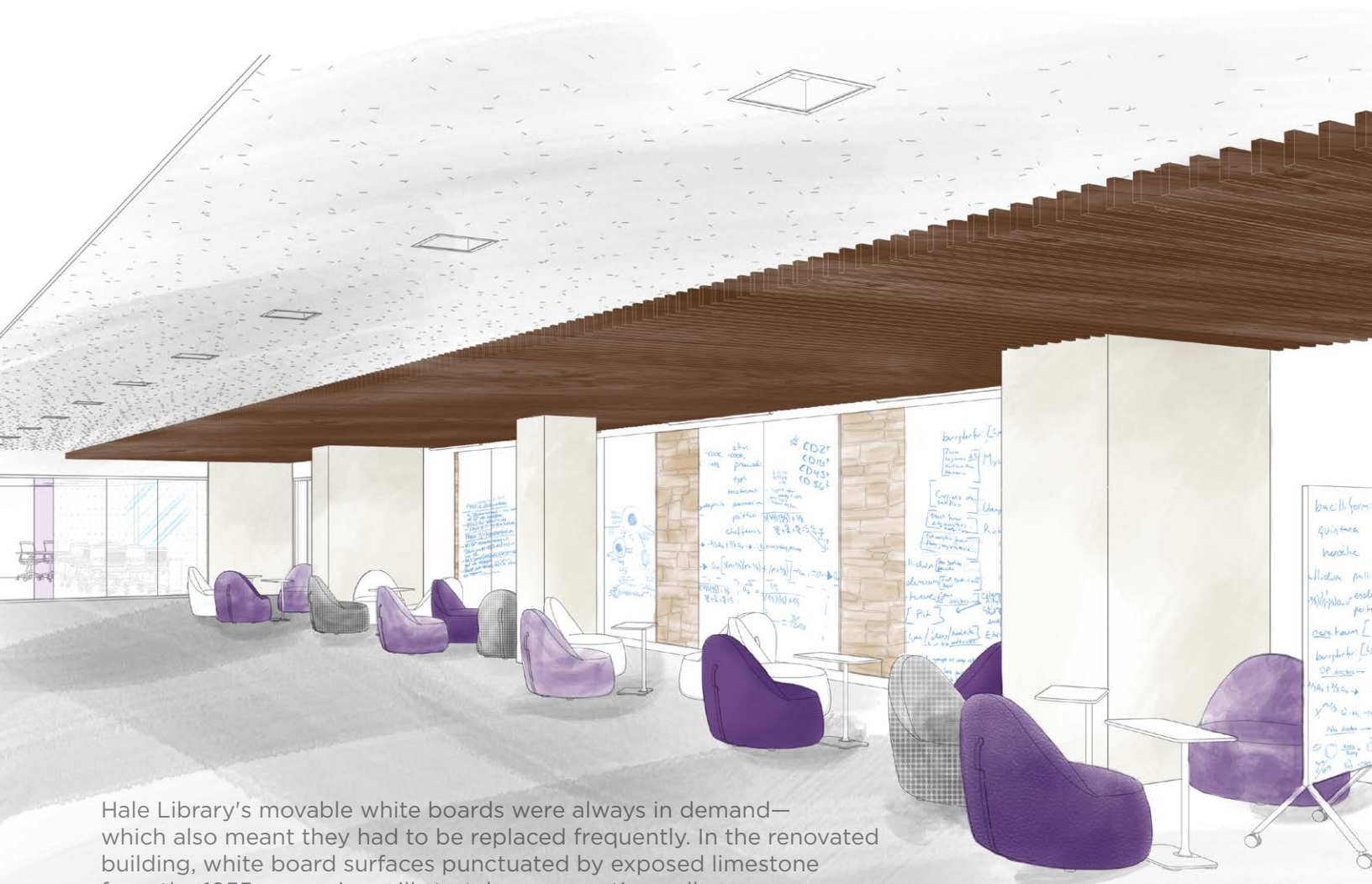
Now, it's time.

We have been given a fresh start, and we're creating a new Hale Library.

It will welcome K-Staters at the center of campus. Whether they're looking for a reprieve from the bustle of college life, a serene spot to check out from their academic demands or a place to plug in and grind out a research assignment, they will come to Hale Library.

It will be an oasis in between classes and an on-campus sanctuary late at night. It will offer research support that engenders new ideas and interiors that inspire.

If students need a comfortable table for two or a private study room for ten, they will turn to Hale Library's enhanced collaborative environments. If they need to escape, our quiet floors will provide a retreat for uninterrupted focus. No matter what their work, the new building will allow K-Staters to achieve their goals in improved ways.



Hale Library's movable white boards were always in demand—which also meant they had to be replaced frequently. In the renovated building, white board surfaces punctuated by exposed limestone from the 1955 expansion will stretch across entire walls, offering plenty of room for collaboration.

Our renovation of Hale Library will honor the building's history while augmenting it with technology and new innovations.

And it will continue to be an on-campus refuge for all students: No matter who you are—regardless of your nationality, religion, income, race, gender or what you're studying at K-State—you will be welcome in Hale Library. When K-State students come back to the new, improved library, they will be coming home.

Spaces for collaboration will be scattered throughout the building, including generous amounts of comfortable seating and improved lighting.



LIBRARY



An Innovation Lab on Hale's first and second floors will be the creative nexus of the new library. Users will generate virtual reality experiences through 360-degree video or 3-D animation. They will create artificial intelligence, edit audio and video and learn to use state-of-the-art technology that is not readily available elsewhere on campus.

“We have been working for nine months to reach this stage, and now the renovation begins in earnest,” Dean Lori Goetsch said. “We know how important the building is to our students. For them, we can’t complete this project soon enough.”

The Libraries have completed the disaster recovery work and partnered with architects from PGAV to create our aspirational plans for the building. We haven’t been working in a vacuum, though. Last fall a survey went out to the entire K-State community to ask them what they want in the new Hale Library. Many students said, “I love Hale! Don’t change it too much!”

We’re confident that the new Hale will be everything that the old building was—and so much more.

“In some ways we were lucky,” Goetsch said. “We’d already been dreaming about changes to the building in the run-up to the creation of the Dave and Ellie Everitt Learning Commons that was supposed to start last summer, so we had plenty of ideas for ways we could improve Hale Library. Now we have an opportunity to create a first floor that surpasses our original vision and to expand that vision through the rest of the building.”

Construction on the multiphase project has begun, and parts of

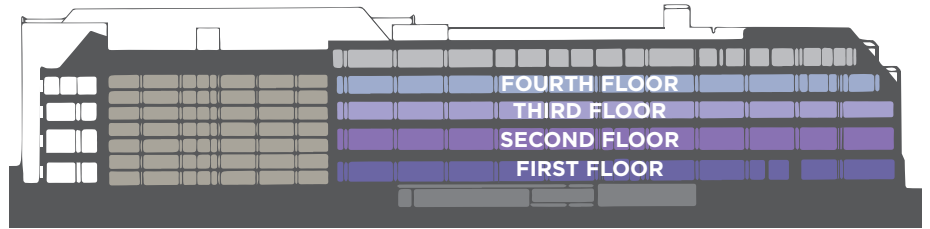
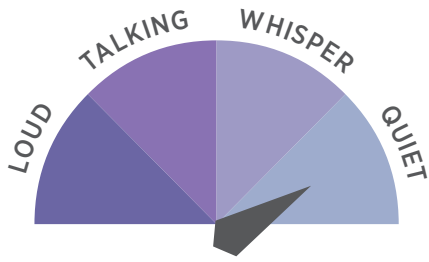
the first floor are scheduled to open fall 2019.

However, as we embark on this journey, we face the reality of what insurance will cover versus what we aspire to create. Insurance will cover the cost of like-for-like replacements. It will not cover some of the new amenities and improvements that would truly define a next-generation library.

Philanthropic contributions will be the key in creating the library that our students deserve and that everyone in our K-State community can be proud of.



Old meets new in a renovated first floor space named for the Hale Family. It will feature a warm, welcoming café with historic wood details salvaged from the Great Room. Visitors will be able to choose from a variety of seating, including comfortable lounge chairs situated around a large two-sided fireplace, a feature frequently requested by students.



Previously, noise complaints were one of the top issues reported to the help desk. Although third floor was the dedicated quiet floor, it was difficult to enforce because of the way sound traveled through the building. The Hale Library renovation will address the problem and rezone the noise levels: The Dave and Ellie Everitt Learning Commons on the first floor will be the most active and bustling; fourth floor will be the quietest.





Before the fire, Historic Farrell Library’s first and second floors housed collections and office cubicles. Once they’re renovated, more K-Staters will be able to appreciate their gorgeous natural light and architectural details: These spaces will be converted into public gathering spots featuring high-use materials like juvenile literature.

WE HEAR YOU: K-STATE VOICES SHAPE HALE LIBRARY’S FUTURE

Our plans for the new Hale Library have been informed by thousands of students, faculty and community members.

- Last fall the Libraries launched a survey that drew nearly 2,300 respondents, including 1,445 undergraduates, and garnered more than 400 comments.
- A group of librarians conducted focus groups to follow up with survey respondents in person.
- Architects from PGAV held an open forum on December 4 to share existing plans and get feedback from the K-State community.

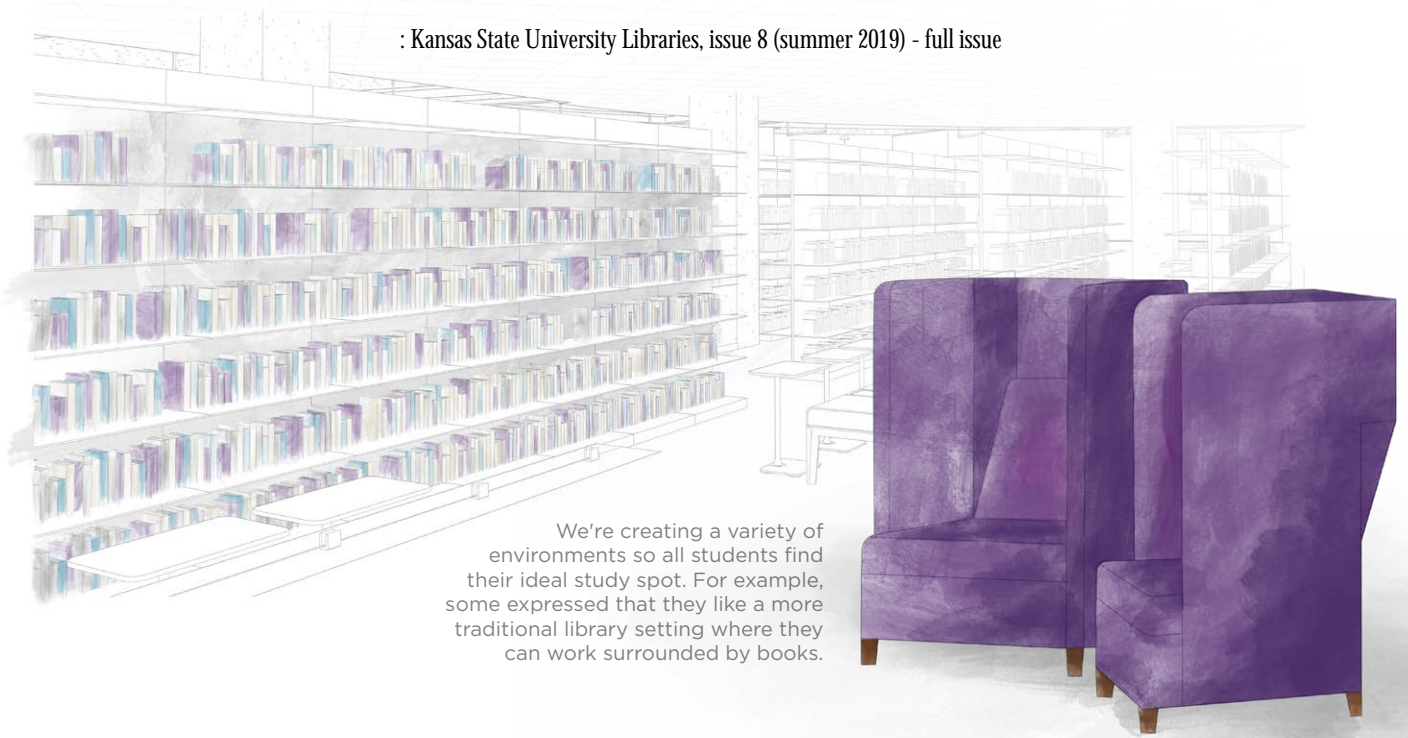
“It’s been a huge priority to gather as much feedback as we can, even though we’re working with a very short timeline,” Dean Lori Goetsch said. “We’ve worked to engage the K-State community at every turn.”

How have their voices influenced plans for the new Hale Library? Several improvements have been described already; here are a few more:

- Information Technology Help and Library Help Desks were previously housed in different second floor locations. After the renovation, those services will be located side-by-side so that visitors can access both types of assistance in the same place.
- Since the building has to be completely rewired, we’ll increase the number of electrical outlets exponentially—a direct response to student demand.
- A centrally located elevator and restrooms will make the building more user-friendly.
- Heating and cooling improvements will eliminate temperature fluctuations and make the entire building more comfortable, regardless of exterior weather conditions.

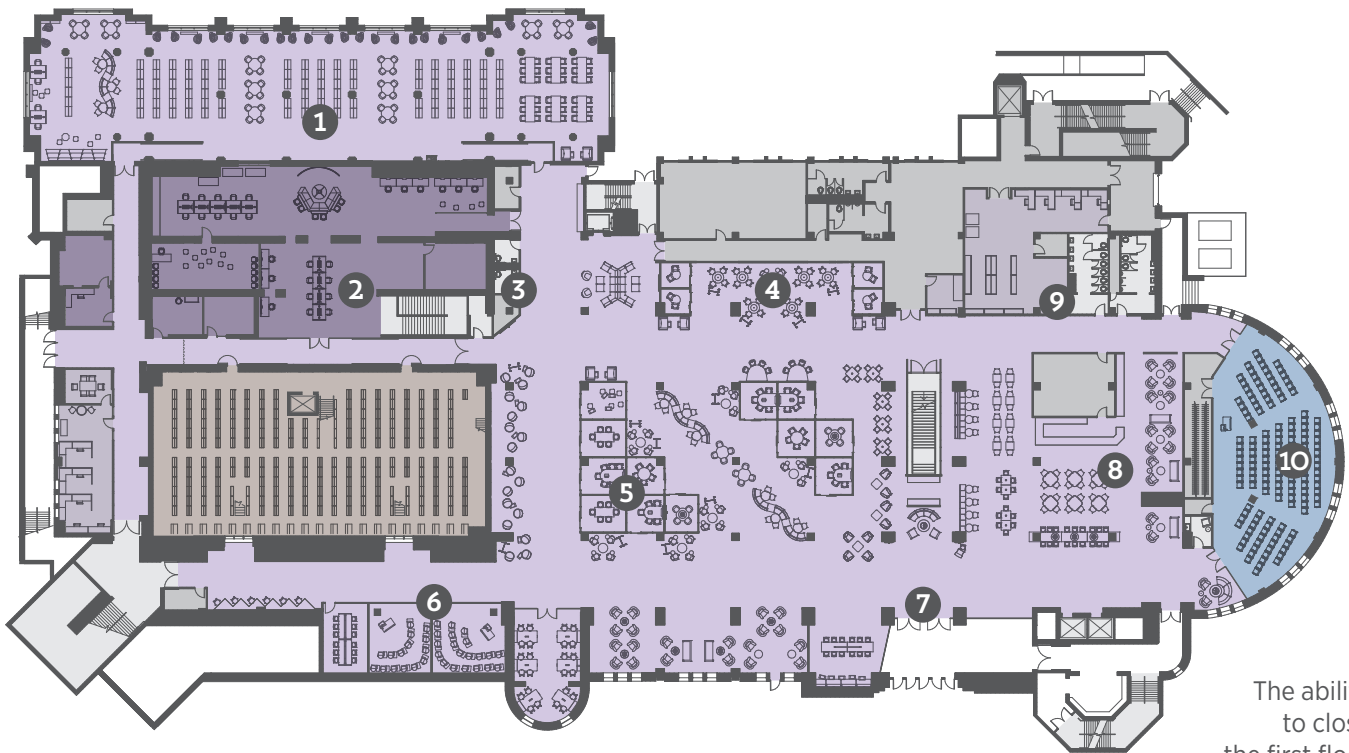
- An improved quiet space for graduate students will give them additional space on campus where they can maintain intense focus for prolonged periods.





We're creating a variety of environments so all students find their ideal study spot. For example, some expressed that they like a more traditional library setting where they can work surrounded by books.

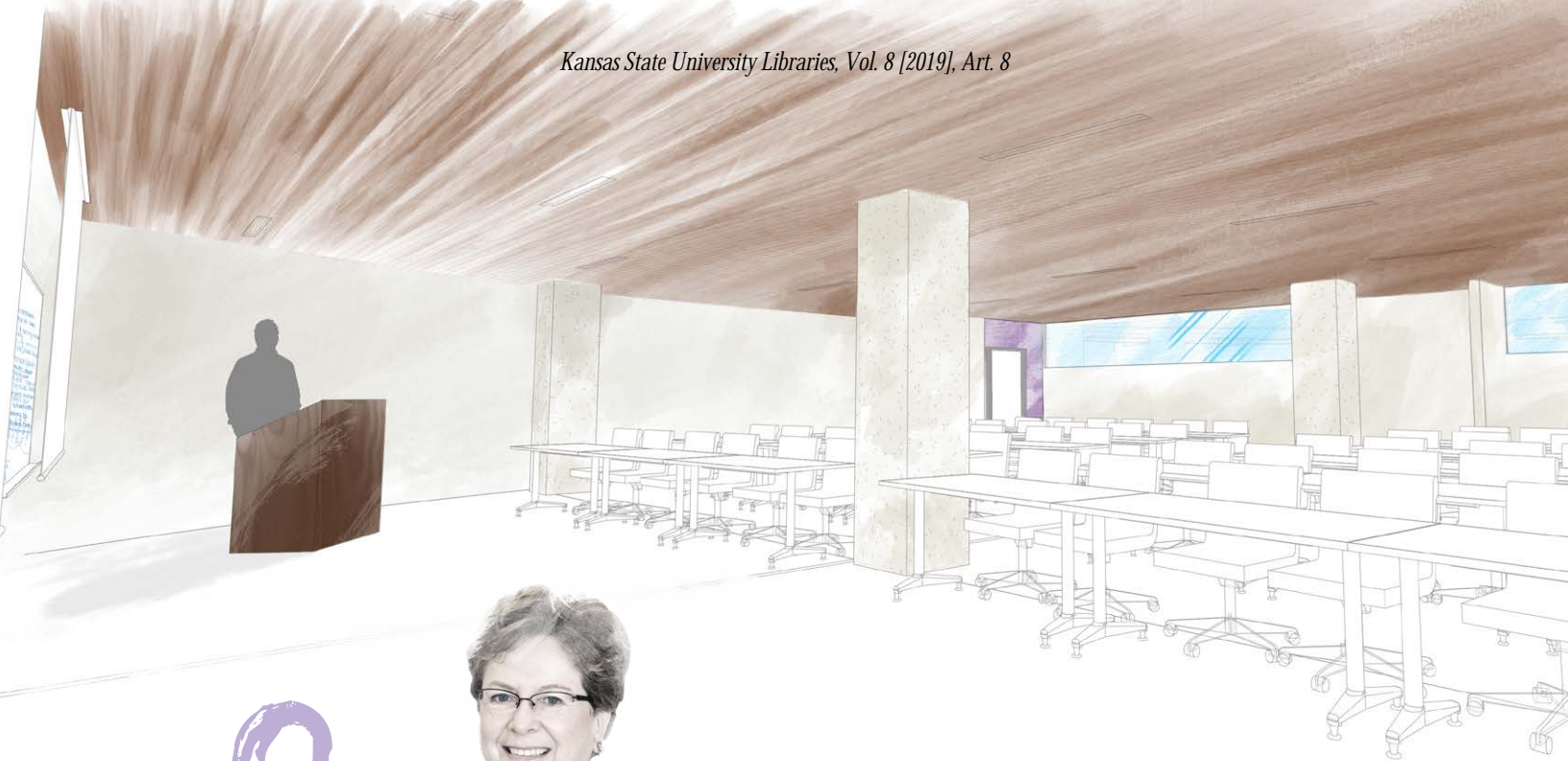
HALE LIBRARY FIRST FLOOR: THE DAVE AND ELLIE EVERITT LEARNING COMMONS



- 1** Juvenile Literature/Curriculum Materials Reading Room *
- 2** Innovation Lab (1st and 2nd floors) *
- 3** All-Gender Restrooms
- 4** Campus Partner Space
- 5** Group Study Rooms *
- 6** Seminar Rooms *
- 7** Direct Entrance to the First Floor
- 8** Hale Family Café Area
- 9** Lactation Room
- 10** Event & Lecture Space *

* Naming opportunities available.

The ability to close the first floor off from the rest of the building will allow us to keep the space open 24 hours a day.



Q&A

WITH DEAN GOETSCH

A large classroom, two seminar rooms and a new event space will support library instruction and outreach.

FUNDING THE NEW HALE LIBRARY

Q Where does the insurance process stand?

A I never realized how complicated it would be to negotiate an insurance settlement of this magnitude. Hale Library is so large, and it was packed with furniture and technology. The insurance adjustors and all of the various parties have been working for months to estimate the costs. We're still not finished!

They aren't just looking at the value of our physical building; they have to consider its contents. There are more than 8,000 unique line items on our inventory of what was inside the library at the time of the fire. We have to agree on a replacement cost for every single item. We will continue going back-and-forth until the building has been constructed and

we agree on the costs to restore the building and the lost inventory.

Q Will insurance ultimately cover everything?

A Insurance has covered the costs for cleanup and will pay what it would cost to put the building back the way it was before the fire and replace the damaged inventory. However, since the building will be under construction, we are taking this opportunity to enhance the design of the building and add features that we know our students want. Not all of these enhancements will be covered by insurance.

Q But the renovation depends (in part) on insurance money. How much will that payment be?

A The insurance process will be ongoing for the duration of construction, or about two years. We won't know the final amount until the renovation is almost complete. The

building will come back up in phases, and the insurance funds will be allocated as the costs are incurred.

Q So, what role will philanthropy play in the renovation?

A Philanthropy plays a very important role in this renovation. We anticipate a funding gap between how much insurance pays to restore the building to the way it was and how much it will cost to open a new and improved Hale Library.

We've heard loud and clear from students how difficult it has been not to have Hale Library this past year, so we are moving forward with the renovation as quickly as possible.

We want nothing more than to incorporate all of the amazing new features, and the generosity of alumni and friends will help make that happen.

SUPPORT



On the third floor, a renovated space suitable for rotating exhibits will welcome visitors into the Great Room. Improved study rooms for graduate students will be located on either side of the gallery.

HELP FOR HALE

TOGETHER WE CAN CREATE THE HALE LIBRARY THE K-STATE COMMUNITY DESERVES, BUT TIME IS OF THE ESSENCE.

Only through donor support will we be able to create study rooms for students, incorporate classroom space and secure advanced technology. In short, donor support will make an ordinary library experience extraordinary.

For more information about the project and naming opportunities, contact

CHRIS SPOONER

Associate Vice President of Development Programs
KSU Foundation
785-775-2130 | chriss@ksufoundation.org

▶ To give online, visit give.evertrue.com/ksu/help-for-hale

HALE LIBRARY

RENOVATION TIMELINE



FALL 2019

Portions of first floor complete



SPRING 2020

Second and fifth floor complete



FALL 2020

Third and fourth floors complete



LATE 2020/EARLY 2021

Historic Farrell Library, all floors complete



YEARS AGO

THE NICHOLS GYMNASIUM FIRE

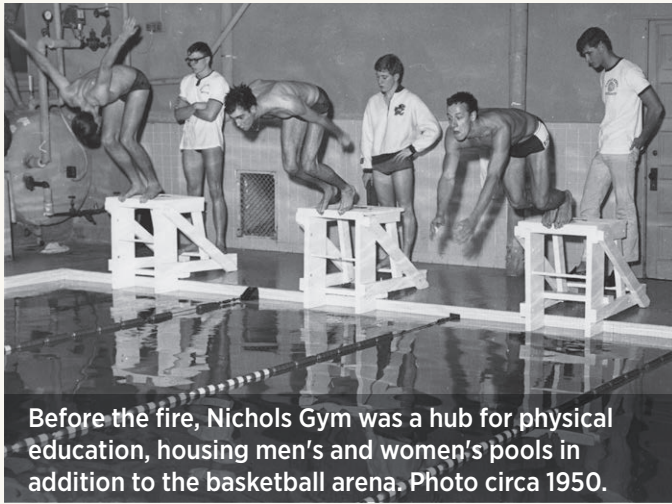


Fifty years ago, on the frigid night of Friday, December 13, 1968, Nichols Gymnasium erupted in flames.

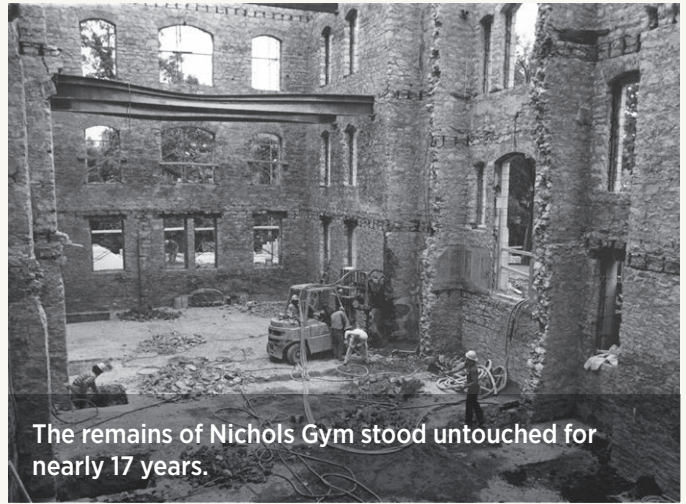
Firefighters faced 15 degree weather, insufficient water pressure and a stiff north wind as they tried to extinguish the blaze. The historic structure was reduced to a shell of walls, towers and a smoldering interior. The flames decimated the departments housed in the building at the time.

Nichols Gymnasium was constructed in 1910-11 for \$84,190. It was the final structure that President Ernest R. Nichols championed during his leadership from 1899 to 1909, prompting the Board of Regents to name it in his honor.

Initially, Nichols Gym housed the physical education department and military department and provided classrooms for public speaking and



Before the fire, Nichols Gym was a hub for physical education, housing men's and women's pools in addition to the basketball arena. Photo circa 1950.



The remains of Nichols Gym stood untouched for nearly 17 years.

German. It was the site of K-State's first national prominence in men's basketball, and the basement housed pools (one for men and one for women) and a women's gymnasium.

President Nichols advocated successfully for appropriations to add nine buildings and renovate or expand five others during a busy decade of campus growth in which enrollment doubled.



African American students who were not athletes. Amidst these changes, tensions ran high in Manhattan throughout the year and exploded in a rash of arsons on campus and in the community at the end of 1968 and beginning of 1969. While some believed they knew the culprit of the Nichols Gym fire, inadequate evidence meant no one was ever charged for the crime.

Losses from the inferno were valued at \$557,986 and included physical education materials,

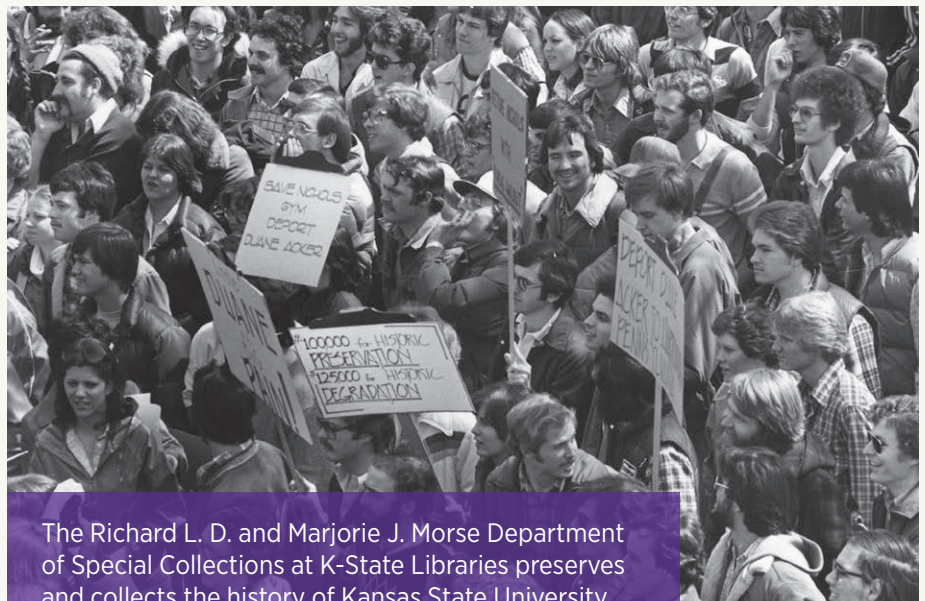
radio station equipment and recordings, musical instruments and sheet music. A notable exception was the sheet music for "Wabash Cannonball," which band director Phil Hewett had taken home. When that song was all the band had to play at the next basketball game, a new K-State tradition was born.

Despite these damages, calls soon echoed to restore the structure. Their success finally came in the form of a \$5.58 million reconstruction project that led to the 1985 rededication of the building as Nichols Hall.

Below: Turning ideas for renovation into reality took several decades filled with activism from students, alumni and faculty, including one campaign named "Castle Crusade."

At the time of the fire, the building included the campus radio stations (KSAC and KSDB), office of radio and television extension, department of music (which suffered significant losses from a 1965 fire that destroyed their previous home in the Auditorium) and women's physical education.

The 1960s were a tumultuous time nationally and locally with issues that related to the civil rights and women's rights movements, the Vietnam War and Black Power. In fact, housing discrimination was a serious concern in Manhattan in 1967 and 1968, and the fall 1968 semester saw the first time K-State intentionally recruited



The Richard L. D. and Marjorie J. Morse Department of Special Collections at K-State Libraries preserves and collects the history of Kansas State University. K-State Keepsakes are compiled from photos, diaries, memorabilia and documents in University Archives.



HALE LIBRARY'S COLLECTIONS

BOXED UP AND PACKED OUT

Thanks to hundreds of workers who put in thousands of hours, more than 1.5 million collection items were packed out of Hale Library less than 17 weeks after the fire.

From beginning to end, the pack-out started in late May on the hot, humid first floor, and it ended in late September in a chilly, air-conditioned Stack H, just above Hale Library's fourth floor. Until Hale Library is renovated, all of its books—approximately 147,400 boxes of them—will be stored in multiple air-conditioned warehouses across the region. Workers at the storage sites will clean each book one at a time and then re-box and store them until they can be returned to campus.

To clean a soot-covered book, a HEPA vacuum is used on the book's exterior to remove most of the dirt and soot. Then the covers, fore-edge and spine are wiped down with a dry chemical sponge. It takes about 20 minutes to clean one box of 12 to 15 books.

We estimate that all 1.5 million items could be clean by July 2019. Even better news: We anticipate that more than 99 percent of the materials will be saved.

"We'll have to coordinate moving the books back to Hale from all of the storage locations and make sure everything goes back on the shelves in call number order," said Joelle Pitts, head of content development and co-chair of the taskforce charged with returning the books to their homes. "It's hard to convey the enormity of this job. It will be like putting a massive puzzle back together again."

So how are our researchers functioning without access to the Libraries' physical collection? While it's been a challenge, our interlibrary loan department has worked hard to fill the void.

"Interlibrary loans of hard copy materials like books are up almost 80% since the fire, and loans regardless of format are up about 39%," Jason Coleman, head of library user services, said. "Our team has worked tirelessly to make sure K-State's researchers still have access to the materials they need."



Caves created by limestone mining under Kansas City, Mo., are ideal for archival storage. Much of our collection remains there for now.

HALE MOVE-OUT

we moved **1105 TONS OF BOOKS**

THE EQUIVALENT OF **7 BLUE WHALES**

IF YOU MADE ONE STACK of all the boxes **IT WOULD BE HIGHER THAN FIVE MOUNT EVERESTS**

IF ALL OF the books were **LAID END-TO-END** they'd stretch **237 MILES** OR FROM HERE to **TULSA**

4

KEY LEADERSHIP ROLES FILLED

This winter and spring, K-State Libraries welcomed a new associate dean and three new department heads.

SHEILA YEH

Associate dean for collections, discovery and information technology services

Yeh comes to K-State from the University of Hawaii at Manoa, where she was assistant dean of library and information technology.

In her new role, she will provide strategic direction and support for staff members who acquire materials, as well as those who make research and teaching resources accessible in all formats. Yeh will have administrative oversight of three departments: metadata, preservation and acquisitions; content development; and information technology services.

"Dr. Yeh brings a level of technological expertise to K-State Libraries that will be invaluable as we navigate a rapidly changing academic landscape," Dean Lori Goetsch said.



JASON BENGTSON

Head of information technology services

Bengtson, who served for two years as assistant director for library IT services, will provide overall direction, supervision and departmental vision for the Libraries' internal IT unit. In addition, he will oversee the development of innovative applications.

Bengtson previously served as innovation architect for the Texas Medical Center Library and head of library computing and information systems at the University of Oklahoma's Robert M. Bird Library.



CLIFF HIGHT

Head of the Richard L. D. and Marjorie J. Morse Department of Special Collections

University archivist since February 2011, Hight will oversee the collection's return from offsite storage to an improved space on Hale Library's fifth floor. He will play a key role in planning a refurbished special collections area that will allow for improved collection visibility and outreach efforts.

Hight, who continues to serve as university archivist, will also pursue and foster donor relationships.



JOELLE PITTS

Head of content development and acquisitions

Pitts will lead a strategic review of the Libraries' 3.2 million item collection and work to create both internal cost-savings and resource-sharing partnerships with other institutions. She will also co-lead the team charged with creating a plan for the collection's return from storage back into Hale Library.

Previously, as instructional design librarian, Pitts was a driving force behind New Literacies Alliance, a consortia of libraries that constructs online learning environments.

**WATCH THE NEW
HALE LIBRARY TAKE SHAPE!**



Get weekly behind-the-scenes photos,
news, interviews and more at
blogs.k-state.edu/hale