

Kansas Agricultural Experiment Station Research Reports

Volume 4
Issue 3 *Southeast Agricultural Research Center
Reports*

Article 17

2018

Annual Summary of Weather Data for Parsons – 2017

M. Knapp
Kansas State University, Manhattan, mknapp@ksu.edu

L. W. Lomas
Kansas State University, llomas@ksu.edu

Follow this and additional works at: <https://newprairiepress.org/kaesrr>

 Part of the [Agronomy and Crop Sciences Commons](#), and the [Meteorology Commons](#)

Recommended Citation

Knapp, M. and Lomas, L. W. (2018) "Annual Summary of Weather Data for Parsons – 2017," *Kansas Agricultural Experiment Station Research Reports*: Vol. 4: Iss. 3. <https://doi.org/10.4148/2378-5977.7578>

This report is brought to you for free and open access by New Prairie Press. It has been accepted for inclusion in Kansas Agricultural Experiment Station Research Reports by an authorized administrator of New Prairie Press. Copyright 2018 Kansas State University Agricultural Experiment Station and Cooperative Extension Service. Contents of this publication may be freely reproduced for educational purposes. All other rights reserved. Brand names appearing in this publication are for product identification purposes only. No endorsement is intended, nor is criticism implied of similar products not mentioned. K-State Research and Extension is an equal opportunity provider and employer.



Annual Summary of Weather Data for Parsons – 2017

Abstract

Weather Data for Parsons – 2017

Keywords

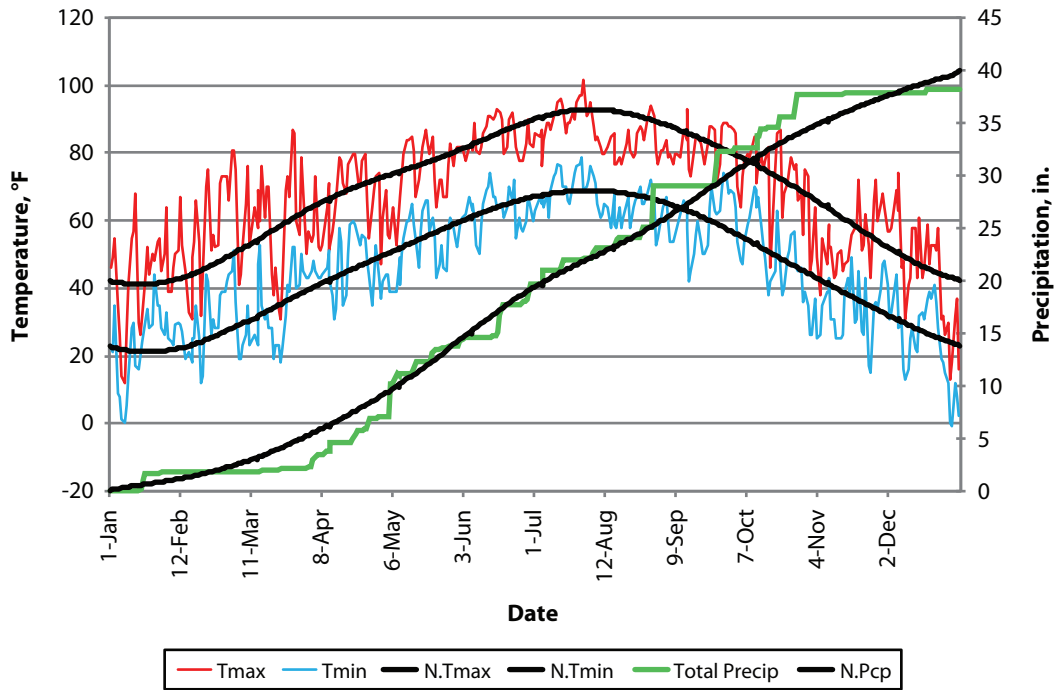
weather, Parsons weather, 2017 weather

Creative Commons License



This work is licensed under a [Creative Commons Attribution 4.0 License](https://creativecommons.org/licenses/by/4.0/).

Annual Summary of Weather Data for Parsons – 2017



2018 SEARC AGRICULTURAL RESEARCH

2017 data

	Jan	Feb	Mar	Apr	May	Jun	Jul	Aug	Sep	Oct	Nov	Dec	Annual
Avg. Max	44.2	57.6	60.6	67.3	74.9	85.1	89.3	82.7	81.9	71.0	54.7	45.0	67.9
Avg. Min	23.6	30.0	36.4	46.5	53.6	63.4	69.4	62.6	59.2	47.7	34.3	23.8	45.9
Avg. Mean	33.9	43.8	48.5	56.9	64.2	74.3	79.3	72.7	70.6	59.4	44.5	34.4	56.9
Precip	1.72	0	1.64	3.8	7.13	5.48	3.35	5.97	3.61	5.08	0.15	0.28	38.17
Snow	0.8	0.0	0.0	0.0	0.0	0.0	0.0	0.0	0.0	0.0	0	0.6	1.4
Heat DD*	963	594	521	266	120	0	0	0	31	236	615	949	4293
Cool DD*	0	1	9	22	96	279	444	238	198	61	0	0	1346
Rain Days	6	0	9	13	12	12	8	7	6	8	3	2	86
Min < 10	5	0	0	0	0	0	0	0	0	0	0	4	9
Min < 32	25	17	11	1	0	0	0	0	0	3	13	21	91
Max > 90	0	0	0	0	0	6	13	3	1	0	0	0	23

Normal values (1981-2010)

	Jan	Feb	Mar	Apr	May	Jun	Jul	Aug	Sep	Oct	Nov	Dec	Annual
Avg. Max	42.0	47.6	57.1	67.1	75.7	84.4	90.0	90.3	81.3	69.6	56.6	44.2	67.2
Avg. Min	21.8	26.0	35.0	44.5	55.0	64.1	68.5	66.6	57.6	45.5	35.3	24.6	45.5
Avg. Mean	31.9	36.8	46.1	55.8	65.3	74.2	79.3	78.5	69.4	57.6	46	34.4	56.4
Precip	1.41	1.77	3.19	4.38	5.93	5.53	3.92	3.29	4.69	3.86	2.94	2.06	42.97
Snow	2.8	1.7	1.2	0.0	0.0	0.0	0.0	0.0	0.0	0.0	0.3	2.7	8.7
Heat DD	1026	790	590	299	85	8	1	1	52	260	574	948	4632
Cool DD	0	0	2	23	96	285	442	418	186	29	2	0	1483

Departure from normal

	Jan	Feb	Mar	Apr	May	Jun	Jul	Aug	Sep	Oct	Nov	Dec	Annual
Avg. Max	2.2	10.0	3.5	0.2	-0.8	0.7	-0.7	-7.6	0.6	1.4	-1.9	0.8	0.7
Avg. Min	1.8	4.0	1.4	2.0	-1.4	-0.7	0.9	-4.0	1.6	2.2	-1.0	-0.8	0.5
Avg. Mean	2.0	7.0	2.4	1.1	-1.1	0.1	0.0	-5.8	1.1	1.8	-1.5	0.0	0.6
Precip	0.31	-1.77	-1.55	-0.62	1.2	-0.05	-0.57	2.68	-1.08	1.22	-2.79	-1.78	-4.8
Snow	-2.8	-1.7	-1.2	0.0	0.0	0.0	0.0	0.0	0.0	0.0	-0.3	-2.7	-8.7
Heat DD	-63	-196	-70	-34	35	-8	-1	-1	-21	-25	41	1	-341
Cool DD	0	1	7	-1	0	-7	2	-180	12	32	-2	0	-137

* Daily values were computed from mean temperatures. Each degree that a day's mean is below (or above) 65 F is counted for one heating (or cooling) degree day.