

# Kansas Agricultural Experiment Station Research Reports

---

Volume 1  
Issue 5 *Southwest Research-Extension Center  
Reports*

Article 7

---

January 2015

## Wheat and Grain Sorghum in Four-Year Rotations

A. Schlegel  
*Kansas State University*, [schlegel@ksu.edu](mailto:schlegel@ksu.edu)

J. D. Holman  
*Kansas State University*, [jholman@ksu.edu](mailto:jholman@ksu.edu)

C. Thompson  
*Kansas State University*, [cthompso@ksu.edu](mailto:cthompso@ksu.edu)

Follow this and additional works at: <https://newprairiepress.org/kaesrr>

 Part of the [Agronomy and Crop Sciences Commons](#)

---

### Recommended Citation

Schlegel, A.; Holman, J. D.; and Thompson, C. (2015) "Wheat and Grain Sorghum in Four-Year Rotations," *Kansas Agricultural Experiment Station Research Reports*: Vol. 1: Iss. 5. <https://doi.org/10.4148/2378-5977.1074>

This report is brought to you for free and open access by New Prairie Press. It has been accepted for inclusion in Kansas Agricultural Experiment Station Research Reports by an authorized administrator of New Prairie Press. Copyright January 2015 Kansas State University Agricultural Experiment Station and Cooperative Extension Service. Contents of this publication may be freely reproduced for educational purposes. All other rights reserved. Brand names appearing in this publication are for product identification purposes only. No endorsement is intended, nor is criticism implied of similar products not mentioned. K-State Research and Extension is an equal opportunity provider and employer.



---

## Wheat and Grain Sorghum in Four-Year Rotations

### Abstract

Research on 4-year crop rotations with wheat and grain sorghum was initiated in 1996 at the Southwest Research-Extension Center near Tribune, Kansas. Rotations were wheat-wheat-sorghum-fallow (WWSF), wheat-sorghum-sorghum-fallow (WSSF), and continuous wheat (WW). Soil water at wheat planting averaged about 9 inches following sorghum, which is about 3 inches more than the average for the second wheat crop in a WWSF rotation. Soil water at sorghum planting was only about 1 inch less for the second sorghum crop compared with sorghum following wheat. Grain yield of recrop wheat averaged about 80% of the yield of wheat following sorghum. Grain yield of continuous wheat averaged about 65% of the yield of wheat grown in a 4-year rotation following sorghum. Wheat yields were similar following one or two sorghum crops. Similarly, average sorghum yields were the same following one or two wheat crops. Yield of the second sorghum crop in a WSSF rotation was only about 10% of the yield of the first sorghum crop in 2014, although the long-term average is about 65% of the yield of the first sorghum crop.

### Keywords

cropping systems, rotations, sorghum, wheat; yield, soil water

### Creative Commons License



This work is licensed under a [Creative Commons Attribution 4.0 License](https://creativecommons.org/licenses/by/4.0/).

## Wheat and Grain Sorghum in Four-Year Rotations

*A. Schlegel, J. Holman, and C. Thompson*

### Summary

Research on 4-year crop rotations with wheat and grain sorghum was initiated in 1996 at the Southwest Research-Extension Center near Tribune, Kansas. Rotations were wheat-wheat-sorghum-fallow (WWSF), wheat-sorghum-sorghum-fallow (WSSF), and continuous wheat (WW). Soil water at wheat planting averaged about 9 inches following sorghum, which is about 3 inches more than the average for the second wheat crop in a WWSF rotation. Soil water at sorghum planting was only about 1 inch less for the second sorghum crop compared with sorghum following wheat. Grain yield of recrop wheat averaged about 80% of the yield of wheat following sorghum. Grain yield of continuous wheat averaged about 65% of the yield of wheat grown in a 4-year rotation following sorghum. Wheat yields were similar following one or two sorghum crops. Similarly, average sorghum yields were the same following one or two wheat crops. Yield of the second sorghum crop in a WSSF rotation was only about 10% of the yield of the first sorghum crop in 2014, although the long-term average is about 65% of the yield of the first sorghum crop.

### Introduction

In recent years, cropping intensity has increased in dryland systems in western Kansas. The traditional wheat-fallow system is being replaced by wheat-summer crop-fallow rotations. Is more intensive cropping feasible with concurrent increases in no-till? Objectives of this research were to quantify soil water storage, crop water use, and crop productivity of 4-year and continuous cropping systems.

### Procedures

Research on 4-year crop rotations with wheat and grain sorghum was initiated at the Tribune unit of the Southwest Research-Extension Center in 1996. Rotations were WWSF, WSSF, and WW. No-till was used for all rotations. Available water was measured in the soil profile (0 to 6 ft) at planting and harvest of each crop. The center of each plot was machine harvested after physiological maturity, and yields were adjusted to 12.5% moisture.

## Results and Discussion

### *Soil water*

The amount of available water in the soil profile (0 to 6 ft) at wheat planting varied greatly from year to year (Figure 1). In 2014, available soil water was 2 to 3 inches greater for all rotations compared to the long-term average. Soil water was similar following fallow after either one or two sorghum crops and averaged about 9 inches across the 18-year study period. Water at planting of the second wheat crop in a WWSF rotation generally was less than that at planting of the first wheat crop, except in 1997 and 2003. Soil water for the second wheat crop averaged more than 3 inches (or about 40%) less than that for the first wheat crop in the rotation. Continuous wheat averaged about 0.8 inch less water at planting than the second wheat crop in a WWSF rotation.

Similar to the measurement for wheat planting, the amount of available water in the soil profile at sorghum planting varied greatly from year to year (Figure 2). Soil water was similar following fallow after either one or two wheat crops and averaged about 8 inches over 19 years. Water at planting of the second sorghum crop in a WSSF rotation was generally less than that at planting of the first sorghum crop. Averaged across the entire study period, the first sorghum crop had about 1 inch more available water at planting than the second crop.

### *Grain yields*

In 2014, yields were greater for wheat following either one or two sorghum crops than the long-term average, while continuous wheat yields were only about 50% of the long-term average (Table 1). Averaged across 18 years, recrop wheat (the second wheat crop in a WWSF rotation) yielded about 80% of first-year wheat crop in WWSF. Before 2003, recrop wheat yielded about 70% of first-year wheat. In 2003 and 2009, however, recrop wheat yields were much greater than those in all other rotations. For 2003 recrop wheat, the increase was possibly a result of failure of the first-year wheat in 2002, which resulted in a period from 2000 sorghum harvest to 2003 wheat planting without a harvested crop. However, this was not the case for the 2009 recrop wheat. Generally, little difference has occurred in wheat yields following one or two sorghum crops. In most years, continuous wheat yields have been similar to recrop wheat yields, but in several years (2003, 2007, 2009, and 2014), recrop wheat yields were considerably greater than continuous wheat yields.

Sorghum yields following wheat in 2014 were greater than the long-term average, while yields of sorghum following sorghum were much less than the average (Table 2). Sorghum yields were similar following one or two wheat crops, which is consistent with the long-term average. The second sorghum crop typically averages about 65% of the yield of the first sorghum crop, but in 2014, recrop sorghum yields were only about 10% of the first sorghum crop.

**Table 1. Wheat response to dryland crop rotation, Tribune, Kansas, 1997–2014**

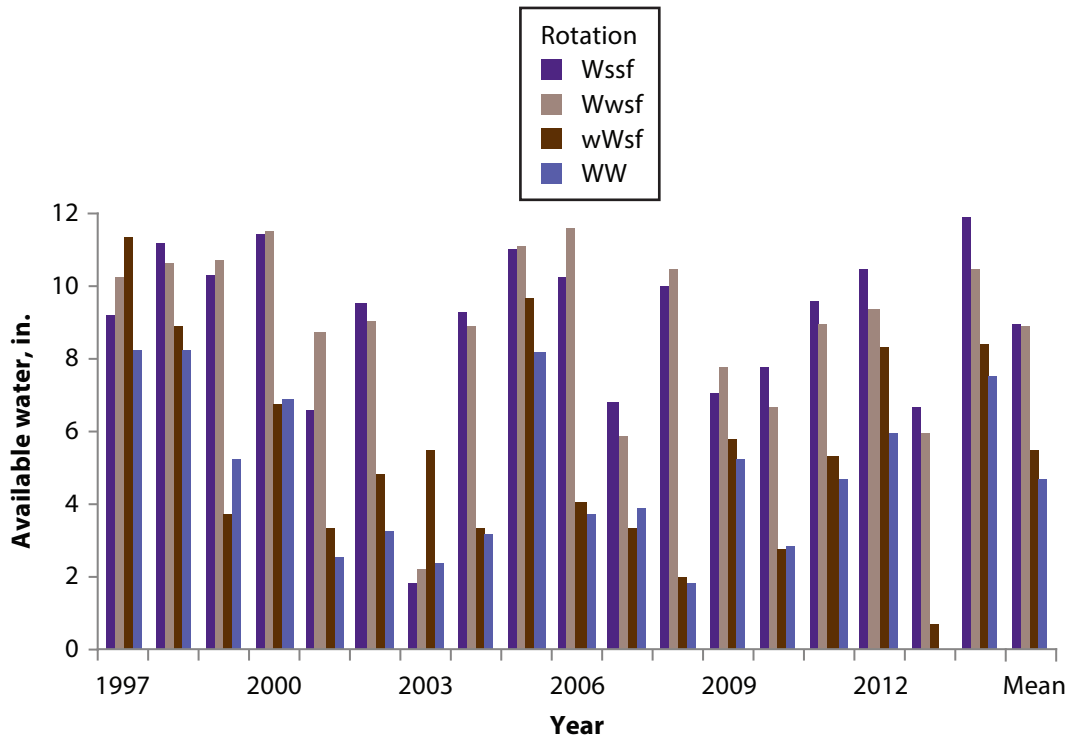
Year	Rotation					ANOVA ( $P>F$ )		
	W <sub>ssf</sub> <sup>1</sup>	W <sub>wsf</sub>	wW <sub>sf</sub>	WW	LSD <sub>0.05</sub>	Rotation	Year	Year × Rotation
	----- bu/a -----							
1997	57	55	48	43	8	0.017		
1998	70	64	63	60	12	0.391		
1999	74	80	41	43	14	0.001		
2000	46	35	18	18	10	0.001		
2001	22	29	27	34	14	0.335		
2002	0	0	0	0	---	---		
2003	29	27	66	30	14	0.001		
2004	5.7	6.1	0.4	0.5	1.6	0.001		
2005	45	40	41	44	10	0.690		
2006	28	26	7	2	8	0.001		
2007	75	61	63	41	14	0.004		
2008	40	40	5	6	5	0.001		
2009	37	39	50	24	15	0.029		
2010	63	60	29	23	9	0.001		
2011	25	22	25	17	8	0.152		
2012	14	20	10	9	15	0.380		
2013	0	0	0	0	---	---		
2014	51	45	31	12	18	0.004		
Mean	38a	36a	29b	23c	2	0.001	0.001	0.001

<sup>1</sup>W, wheat; S, sorghum; capital letters denote current year's crop.

**Table 2. Grain sorghum response to crop rotation, Tribune, Kansas, 1996–2014**

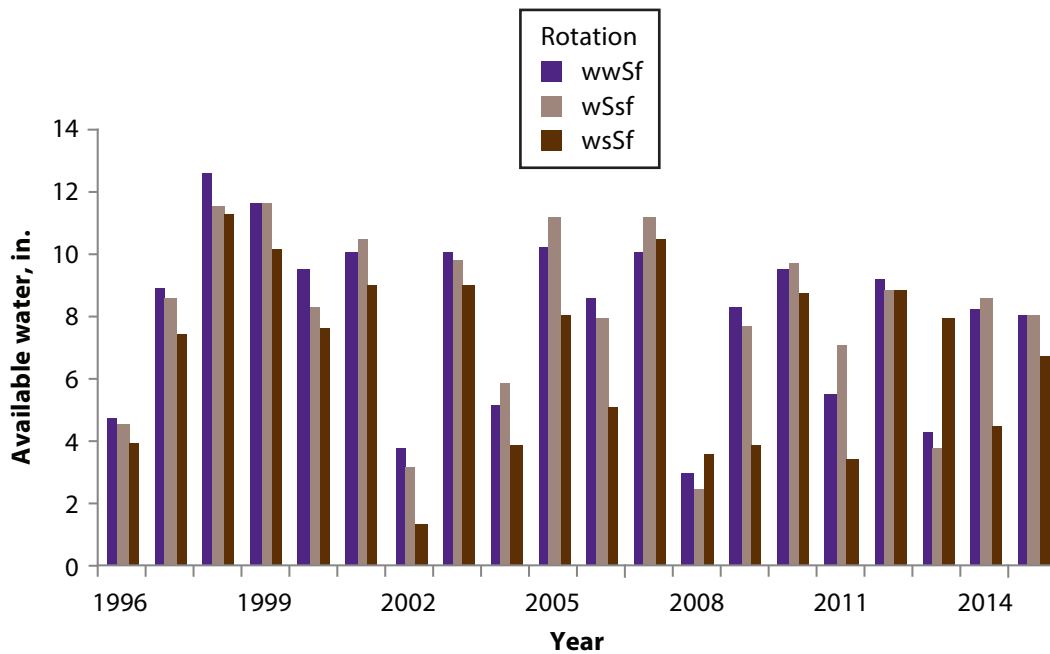
Year	Rotation				ANOVA ( $P>F$ )		
	wSsf <sup>1</sup>	wsSf	wwSf	LSD <sub>0.05</sub>	Rotation	Year	Year × Rotation
	----- bu/a -----						
1996	58	35	54	24	0.117		
1997	88	45	80	13	0.001		
1998	117	100	109	12	0.026		
1999	99	74	90	11	0.004		
2000	63	23	67	16	0.001		
2001	68	66	73	18	0.673		
2002	0	0	0	---	---		
2003	60	41	76	18	0.009		
2004	91	79	82	17	0.295		
2005	81	69	85	20	0.188		
2006	55	13	71	15	0.001		
2007	101	86	101	9	0.008		
2008	50	30	57	12	0.005		
2009	89	44	103	53	0.080		
2010	98	52	105	24	0.004		
2011	119	47	105	34	0.005		
2012	0	0	0	---	---		
2013	105	98	100	23	0.742		
2014	91	5	84	29	0.001		
Mean	75a	48b	76a	4	0.001	0.001	0.001

<sup>1</sup> W, wheat; S, sorghum; capital letters denote current year's crop.



**Figure 1. Available soil water in 6-ft profile at planting of wheat in several rotations, Tribune, Kansas, 1997–2014.**

Capital letter denotes current crop in rotation (W, wheat; S, sorghum). The last set of bars (Mean) is the average across years.



**Figure 2. Available soil water in 6-ft profile at planting of sorghum in several rotations, Tribune, Kansas, 1996–2014.**

Capital letter denotes current crop in rotation (W, wheat; S, sorghum). The last set of bars (Mean) is the average across years.