

# Kansas Agricultural Experiment Station Research Reports

---

Volume 0  
Issue 10 *Swine Day (1968-2014)*

Article 297

---

1984

## Lecithin addition to starter pig diets with and without added fat and whey

D Van Wormer

D S. Pollmann

Follow this and additional works at: <https://newprairiepress.org/kaesrr>

 Part of the [Other Animal Sciences Commons](#)

---

### Recommended Citation

Van Wormer, D and Pollmann, D S. (1984) "Lecithin addition to starter pig diets with and without added fat and whey," *Kansas Agricultural Experiment Station Research Reports*: Vol. 0: Iss. 10. <https://doi.org/10.4148/2378-5977.6137>

This report is brought to you for free and open access by New Prairie Press. It has been accepted for inclusion in Kansas Agricultural Experiment Station Research Reports by an authorized administrator of New Prairie Press. Copyright 1984 Kansas State University Agricultural Experiment Station and Cooperative Extension Service. Contents of this publication may be freely reproduced for educational purposes. All other rights reserved. Brand names appearing in this publication are for product identification purposes only. No endorsement is intended, nor is criticism implied of similar products not mentioned. K-State Research and Extension is an equal opportunity provider and employer.



---

## Lecithin addition to starter pig diets with and without added fat and whey

### Abstract

A total of 316 crossbred weanling pigs were used in two studies to evaluate the effect of the addition of edible-grade, unbleached soy lecithin on growth in starter pig diets with and without added fat and/or dried whey. Addition of fat to a corn-soybean meal diet improved ( $P < .05$ ) feed efficiency but addition of lecithin did not affect performance. When lecithin and fat were added in combination, average daily gain was less ( $P < .05$ ) than for diets without added fat. This may be due to a high level of undigestible fat having a limiting effect on intake and consequently decreasing gains. A low level of lecithin (1.5%) in diets without whey gave approximately the same response as a 4% fat diet without thus making lecithin a possible fat substitute should, it be economically feasible.; Swine Day, Manhattan, KS, November 15, 1984

### Keywords

Swine day, 1984; Kansas Agricultural Experiment Station contribution; no. 85-132-S; Report of progress (Kansas State University. Agricultural Experiment Station and Cooperative Extension Service); 461; Swine; Lecithin; Fat; Whey

### Creative Commons License



This work is licensed under a [Creative Commons Attribution 4.0 License](https://creativecommons.org/licenses/by/4.0/).

---

**K****LECITHIN ADDITION TO STARTER PIG DIETS  
WITH AND WITHOUT ADDED FAT AND WHEY****S**

Debbie M. Van Wormer and D. Steven Pollmann

**U**

---

Summary

A total of 316 crossbred weanling pigs were used in two studies to evaluate the effect of the addition of edible-grade, unbleached soy lecithin on growth in starter pig diets with and without added fat and/or dried whey. Addition of fat to a corn-soybean meal diet improved ( $P < .05$ ) feed efficiency but addition of lecithin did not affect performance. When lecithin and fat were added in combination, average daily gain was less ( $P < .05$ ) than for diets without added fat. This may be due to a high level of undigestible fat having a limiting effect on intake and consequently decreasing gains. A low level of lecithin (1.5%) in diets without whey gave approximately the same response as a 4% fat diet without whey, thus making lecithin a possible fat substitute should, it be economically feasible.

Introduction

With producers attempting to wean pigs at an earlier age, it is important that they be provided an adequate diet and environment for survival during this critical time. Addition of fat to the diets of starter pigs may improve performance during this time of low nutrient intake. However, fat tends to be an expensive ingredient and at high levels can cause handling problems. Lecithin, a by-product of soybean processing and a component of fat, makes fat more dispersible in aqueous solutions, possibly leading to better utilization of dietary fat. Ultimately, this could lead to lecithin as a fat substitute or to lower percentages of fat in the diet and possibly decrease feed production costs.

Procedure

Pigs were weaned at approximately 21 days of age, placed into an environmentally controlled nursery, and allowed a 1-week adjustment period. In the first study, the pigs were randomly allotted to one of six treatments (2x3 factorial design), with four pigs per pen and five replications per treatment. The basal diet consisted of a corn-soybean meal base fortified with vitamins and minerals fed in a meal-form. The basal diet was supplemented with 0, 1.5, or 3.0% lecithin<sup>1</sup> and 0 or 4% choice white grease to give six dietary treatments (table 1). Constant calorie to protein and protein to lysine ratios were maintained in all treatments (table 2). A second study was different only in that there were seven pigs per pen and all six treatments contained 20% spray-dried whey (table 3). Feed and water were available ad libitum and pigs were weighed at weaning and every 2 wks thereafter for 6 wk. Feed intake, average daily gain, and feed efficiency were calculated.

---

<sup>1</sup> Merrick Foods, Union Center, WI

### Results and Discussion

The addition of 4% choice white grease to diets without dried whey decreased feed intake and improved feed efficiency. However, there was no significant change in average daily gain (table 4). Addition of lecithin at 1.5 or 3.0% to the fat-supplemented diets showed no improvement in pig performance compared to the control diet, nor was there any lecithin-fat interaction. A low level of lecithin in the diet without added fat gave a response similar to those diets with 4% added fat. This suggests the possibility of using lecithin as a fat substitute.

In diets containing 20% dried whey, a significant response was observed also in decreased feed intake and improved feed efficiency with the addition of 4% choice white grease (table 5). Average daily gains remained unchanged and no significant response to the addition of lecithin was observed. There was, however, a lecithin-fat interaction ( $P < .05$ ) which affected average daily gain. In diets without lecithin, average daily gain increased with the addition of fat but decreased when 1.5 or 3.0% lecithin was added. The treatment having 4% fat and 3% lecithin had the lowest average daily gain. From these two studies it was concluded that lecithin did not affect feed utilization in the starter pig diets and did not appear to influence the utilization of fat.

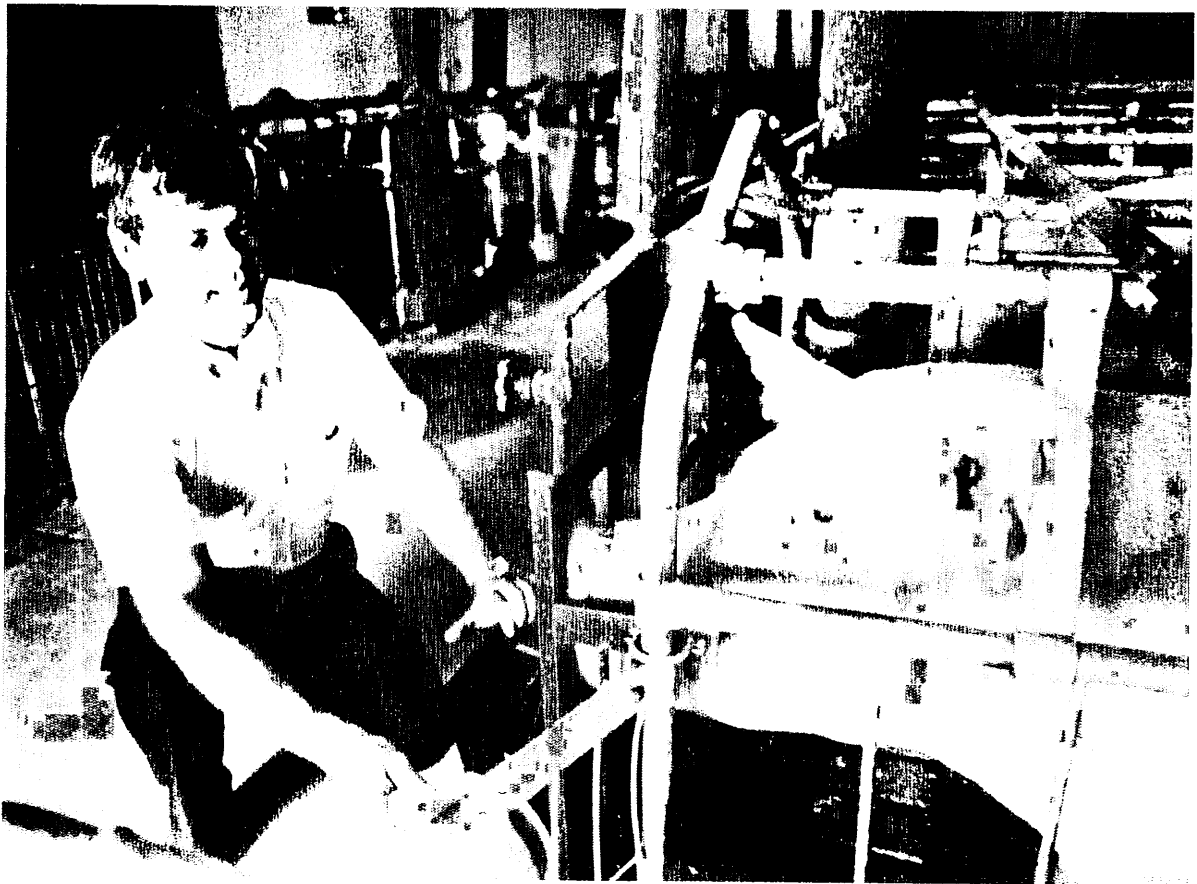


Table 1. Fatty Acid Profiles for Lecithin and Choice White Grease

| Chain length | Percentage Composition |          |
|--------------|------------------------|----------|
|              | Choice white grease    | Lecithin |
| 10:0         | .05                    | —        |
| 12:0         | .07                    | —        |
| 14:0         | 1.21                   | .08      |
| 15:0         | .03                    | .11      |
| 16:0         | 22.99                  | 16.10    |
| 16:1         | 3.26                   | —        |
| 16:2         | .76                    | .11      |
| 17:1         | .85                    | .03      |
| 18:0         | 13.87                  | 4.13     |
| 18:1         | 43.20                  | 17.81    |
| 18:2         | 10.24                  | 54.18    |
| 18:3         | 1.71                   | 7.01     |
| 20:0         | 1.00                   | —        |
| 20:1         | .57                    | —        |
| 20:4         | .21                    | .38      |
| 22:0         | —                      | .08      |
|              | Total                  | 100.02   |

<sup>a</sup> Analysis of fatty acids conducted by Woodson-Tenant Laboratories, Des Moines, Iowa.

Table 2. Diet Composition for Trial 1

|                          |         |         |         |         |         |         |
|--------------------------|---------|---------|---------|---------|---------|---------|
| Lecithin,%               | 0       | 1.5     | 3.0     | 0       | 1.5     | 3.0     |
| Fat,%                    | 0       | 1.5     | 3.0     | 0       | 1.5     | 3.0     |
| Ingredients, lb/ton      |         |         |         |         |         |         |
| Corn                     | 1268    | 1268    | 1268    | 1112    | 1112    | 1112    |
| Soybean meal,44%         | 588     | 588     | 588     | 664     | 664     | 664     |
| Wheat starch             | 60      | 30      | —       | 60      | 30      | —       |
| Choice white grease      | —       | —       | —       | 80      | 80      | 80      |
| Soy lecithin             | —       | 30      | 60      | —       | 30      | 60      |
| L-lysine HCl             | 7       | 7       | 7       | 7       | 7       | 7       |
| Dical (18% Ca, 21% P)    | 32      | 32      | 32      | 32      | 32      | 32      |
| Limestone                | 21      | 21      | 21      | 21      | 21      | 21      |
| Salt                     | 5       | 5       | 5       | 5       | 5       | 5       |
| TM premix, high Zn       | 2       | 2       | 2       | 2       | 2       | 2       |
| Vitamin premix           | 10      | 10      | 10      | 10      | 10      | 10      |
| Selenium premix          | 2       | 2       | 2       | 2       | 2       | 2       |
| ASP-250                  | 5       | 5       | 5       | 5       | 5       | 5       |
| <u>Calculated values</u> |         |         |         |         |         |         |
| % Protein                | 18.58   | 18.58   | 18.58   | 19.55   | 19.55   | 19.55   |
| % Lysine                 | 1.26    | 1.26    | 1.26    | 1.37    | 1.37    | 1.37    |
| % Ca                     | .85     | .85     | .85     | .86     | .86     | .86     |
| % P                      | .70     | .70     | .70     | .70     | .70     | .70     |
| Protein:lysine           | 14.75:1 | 14.75:1 | 14.75:1 | 14.27:1 | 14.27:1 | 14.27:1 |
| Kcal ME:gm protein       | 17.18   | 17.4    | 17.62   | 17.14   | 17.35   | 17.56   |

Table 3. Diet Composition for Trial 2

|                          | 0       | 1.5     | 3.0     | 0       | 1.5     | 3.0     |
|--------------------------|---------|---------|---------|---------|---------|---------|
| Lecithin, %              | 0       | 1.5     | 3.0     | 0       | 1.5     | 3.0     |
| Fat, %                   | 0       | 0       | 0       | 4       | 4       | 4       |
| Ingredients, lb/ton      |         |         |         |         |         |         |
| Corn                     | 932.2   | 933.2   | 933.2   | 784.8   | 784.8   | 784.8   |
| Soybean meal, 44%        | 548.6   | 548.6   | 548.6   | 620.0   | 620.0   | 620.0   |
| Dried whey, spray        | 400.0   | 400.0   | 400.0   | 400.0   | 400.0   | 400.0   |
| Wheat starch             | 60.0    | 30.0    | —       | 60.0    | 30.0    | —       |
| Soy lecithin             | —       | 30.0    | 60.0    | —       | 30.0    | 60.0    |
| Choice white grease      | —       | —       | —       | 80.0    | 80.0    | 80.0    |
| L-lysine HCl             | 4.2     | 4.2     | 4.2     | 4.6     | 4.6     | 4.6     |
| Dical (18% Ca, 21% P)    | 24.6    | 24.6    | 24.6    | 20.0    | 20.0    | 20.0    |
| Limestone                | 13.4    | 13.4    | 13.4    | 14.6    | 14.6    | 14.6    |
| Salt                     | 2.0     | 2.0     | 2.0     | 2.0     | 2.0     | 2.0     |
| TM premix, high Zn       | 2.0     | 2.0     | 2.0     | 2.0     | 2.0     | 2.0     |
| Vitamin premix           | 5.0     | 5.0     | 5.0     | 5.0     | 5.0     | 5.0     |
| Selenium premix          | 2.0     | 2.0     | 2.0     | 2.0     | 2.0     | 2.0     |
| ASP-250                  | 5.0     | 5.0     | 5.0     | 5.0     | 5.0     | 5.0     |
| <u>Calculated values</u> |         |         |         |         |         |         |
| % Protein                | 18.6    | 18.6    | 18.6    | 19.5    | 19.5    | 19.5    |
| % Lysine                 | 1.25    | 1.25    | 1.25    | 1.35    | 1.35    | 1.35    |
| % Ca                     | .8      | .8      | .8      | .8      | .8      | .8      |
| % P                      | .7      | .7      | .7      | .7      | .7      | .7      |
| Protein:lysine           | 14.88:1 | 14.88:1 | 14.88:1 | 14.44:1 | 14.44:1 | 14.44:1 |
| Kcal ME:gm protein       | 17.2    | 17.4    | 17.6    | 17.2    | 17.5    | 17.7    |

Table 4. Effect of Lecithin Addition to Starter Pig Diets (Trial 1).

| Item                                   | % Fat | % Lecithin |      |      | Mean              | SE   |
|--|-------|------------|------|------|-------------------|------|
|  |       | 0          | 1.5  | 3.0  |                   |      |
| <u>Average daily feed intake (lbs)</u> |       |            |      |      |                   |      |
|  | 0     | 1.30       | 1.18 | 1.30 | 1.26 <sup>a</sup> | .050 |
|  | 4     | 1.17       | 1.98 | 1.05 | 1.06 <sup>b</sup> |      |
|  | Mean  | 1.23       | 1.07 | 1.17 |                   | .062 |
| <u>Average daily gain (lbs)</u>        |       |            |      |      |                   |      |
|  | 0     | .94        | .92  | .97  | .94               | .031 |
|  | 4     | .94        | .82  | .82  | .86               |      |
|  | Mean  | .94        | .87  | .89  |                   | .038 |
| <u>Feed efficiency</u>                 |       |            |      |      |                   |      |
|  | 0     | 1.38       | 1.27 | 1.34 | 1.33 <sup>a</sup> | .029 |
|  | 4     | 1.23       | 1.19 | 1.28 | 1.23 <sup>b</sup> |      |
|  | Mean  | 1.31       | 1.23 | 1.31 |                   | .036 |

<sup>ab</sup>Dietary fat effect (P<.05).



Table 5. Effect of Lecithin Addition to Starter Pig Diets with 20% Dried Whey.

| Item  | % Fat | % Lecithin |      |      | Mean              | SE   |
|---|-------|------------|------|------|-------------------|------|
|   |       | 0          | 1.5  | 3.0  |                   |      |
| <u>Average daily feed intake (lbs)</u>      |       |            |      |      |                   |      |
|   | 0     | 1.55       | 1.56 | 1.63 | 1.58 <sup>a</sup> | .038 |
|   | 4     | 1.48       | 1.43 | 1.46 | 1.46 <sup>b</sup> | .046 |
|   | Mean  | 1.52       | 1.50 | 1.54 |                   |      |
| <u>Average daily gain (lbs)<sup>c</sup></u> |       |            |      |      |                   |      |
|   | 0     | 1.02       | 1.04 | 1.06 | 1.04              | .016 |
|   | 4     | 1.12       | 1.06 | 1.00 | 1.06              |      |
|   | Mean  | 1.07       | 1.05 | 1.03 |                   | .020 |
| <u>Feed efficiency</u>                      |       |            |      |      |                   |      |
|   | 0     | 1.52       | 1.50 | 1.54 | 1.52 <sup>a</sup> | .026 |
|   | 4     | 1.32       | 1.36 | 1.45 | 1.37 <sup>b</sup> |      |
|   | Mean  | 1.42       | 1.43 | 1.50 |                   | .031 |

<sup>ab</sup> Dietary fat effect (P<.05).

<sup>c</sup> Lecithin x fat interaction (P<.05).