

Kansas State University Libraries

## New Prairie Press

---

Center for Engagement and Community  
Development

Engagement Symposium

---

### Real Food Lunch and the Student Food Cooperative

Joshilyn H. Binkley  
*Kansas State University*

Matthew A. Rogers  
*Kansas State University*

Follow this and additional works at: <https://newprairiepress.org/cecd>



Part of the [Anthropology Commons](#), and the [Sociology Commons](#)



This work is licensed under a [Creative Commons Attribution-Noncommercial-No Derivative Works 4.0 License](#).

---

Binkley, Joshilyn H. and Rogers, Matthew A. (2016). "Real Food Lunch and the Student Food Cooperative," *Center for Engagement and Community Development*. <https://newprairiepress.org/cecd/engagement/2016/16>

This Event is brought to you for free and open access by the Conferences at New Prairie Press. It has been accepted for inclusion in Center for Engagement and Community Development by an authorized administrator of New Prairie Press. For more information, please contact [cads@k-state.edu](mailto:cads@k-state.edu).



# Real Food Lunch and The Student Food Cooperative

Joshilyn Binkley and Matt Rogers

#foodinsecurity

Joshilyn Binkley and Michael Rogers

**KANSAS STATE**  
UNIVERSITY

















# Sprouts – University of British Columbia





# The Berkeley Student Food Collective

# Food for Thought - Portland State





# The Flaming Eggplant – Evergreen State College



Kresge Coop – UC Santa Cruz

# Maryland Food Collective



# Maryland Food Collective

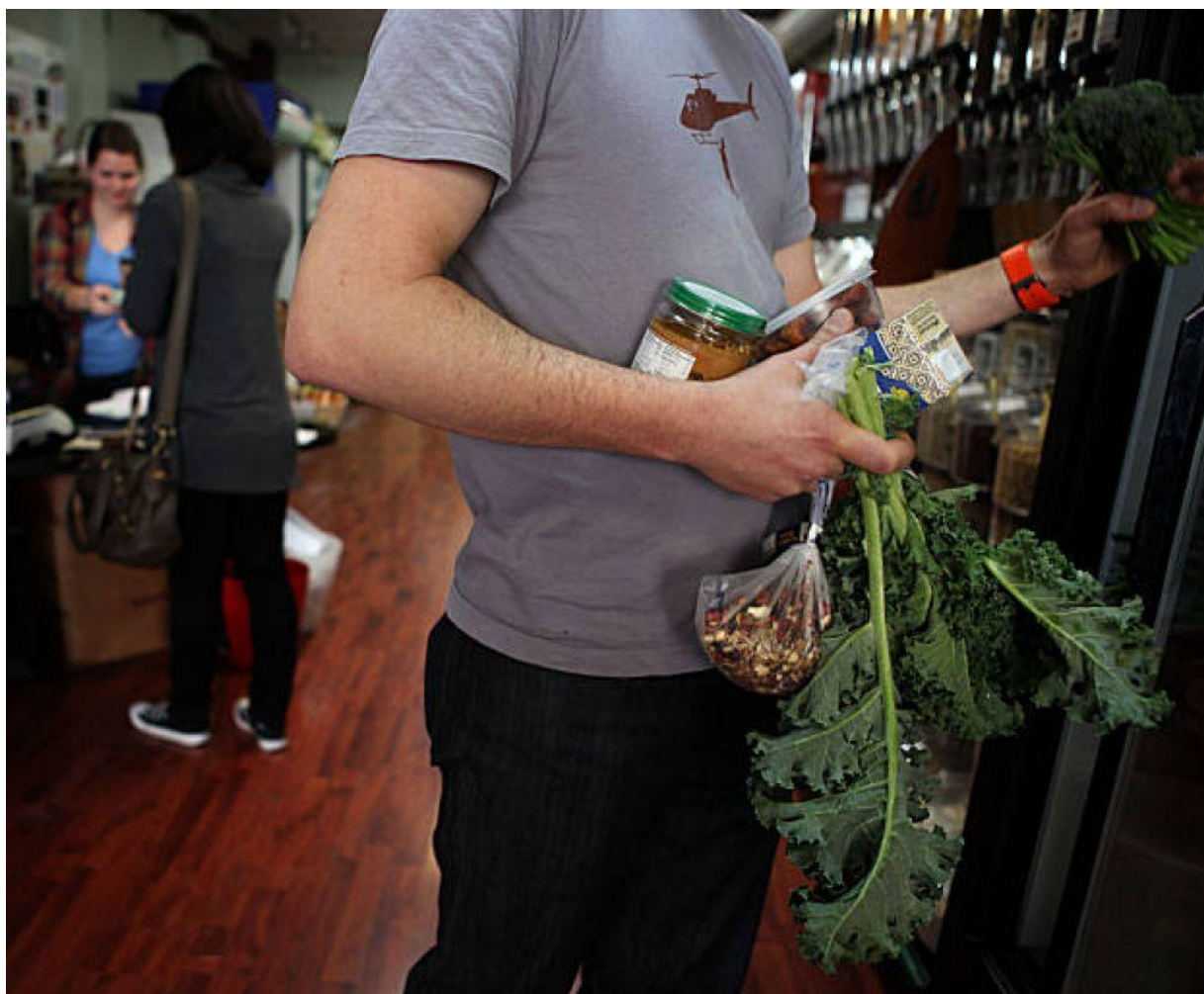


#foodinsecurity

Joshilyn Binkley and Michael Rogers







#foodinsecurity

Joshilyn Binkley and Michael Rogers



#foodinsecurity

Joshilyn Binkley and Michael Rogers

