

Kansas State University Libraries

New Prairie Press

Center for Engagement and Community
Development

Engagement Symposium

Food Deserts in the Breadbasket: A Rural-Urban Comparison

Michael J. Miller
Kansas State University

Patrick S. Rissler
Kansas State University

Follow this and additional works at: <https://newprairiepress.org/cecd>



Part of the [Sociology Commons](#)



This work is licensed under a [Creative Commons Attribution-Noncommercial-No Derivative Works 4.0 License](#).

Miller, Michael J. and Rissler, Patrick S. (2016). "Food Deserts in the Breadbasket: A Rural-Urban Comparison," *Center for Engagement and Community Development*. <https://newprairiepress.org/cecd/engagement/2016/5>

This Event is brought to you for free and open access by the Conferences at New Prairie Press. It has been accepted for inclusion in Center for Engagement and Community Development by an authorized administrator of New Prairie Press. For more information, please contact cads@k-state.edu.



Food Deserts in the Breadbasket: A Rural-Urban Comparison*

Michael Miller and Patrick Rissler
Kansas State University
Sociology (SASW)

*This research is supported by USDA Multistate Research Project NC1196, “Food Systems, Health, and Well-Being: Understanding Complex Relationships and Dynamics of Change”

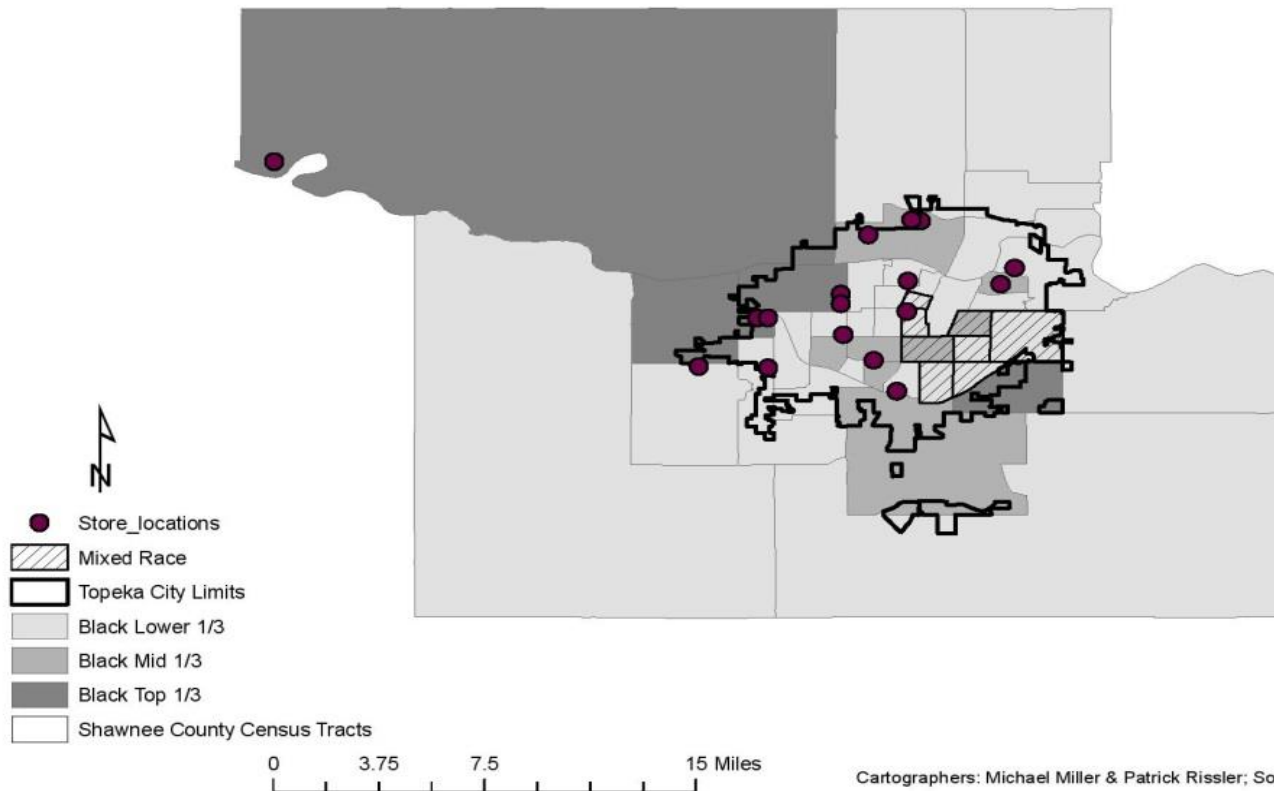
#foodinsecurity

KANSAS STATE
UNIVERSITY

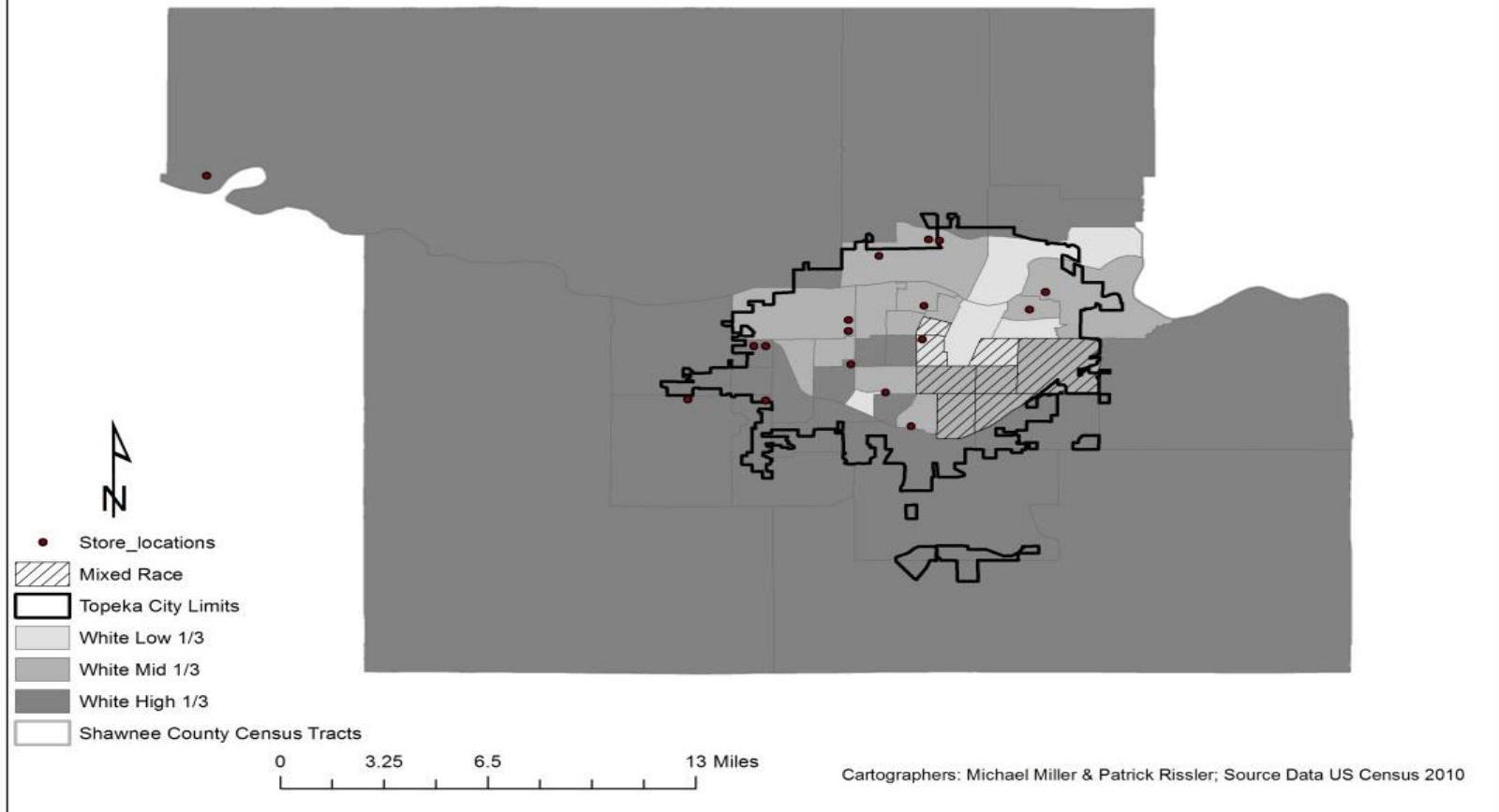


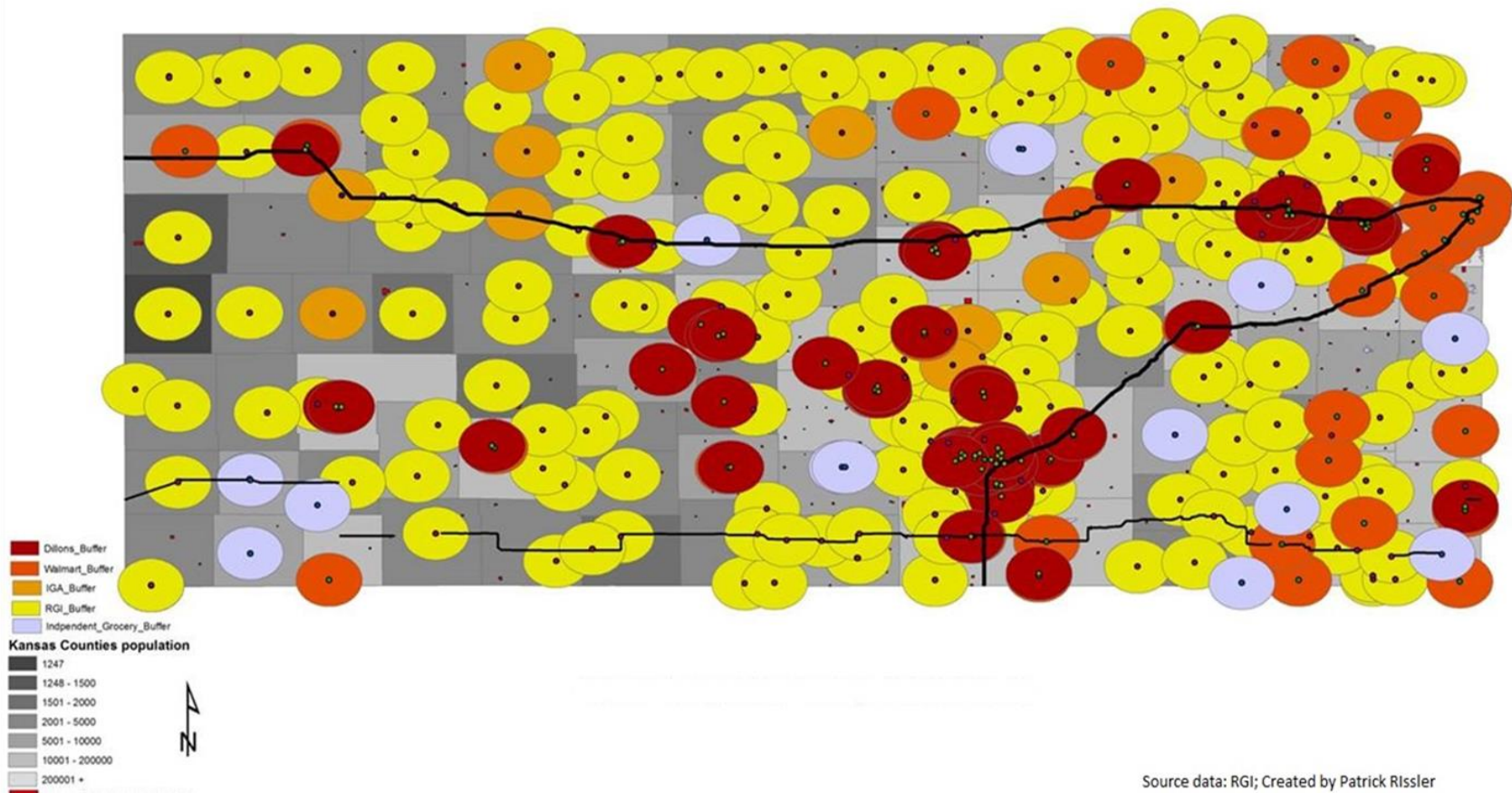


Black Income Distribution: Shawnee County, Kansas



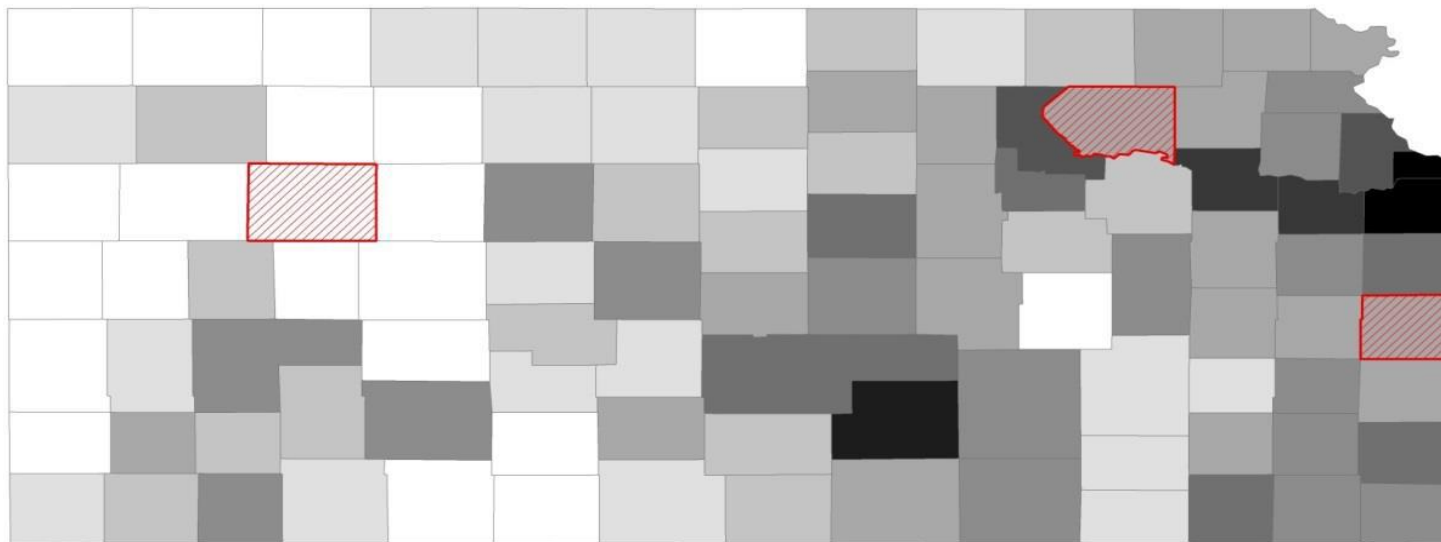
White Income Distribution: Shawnee County, Kansas



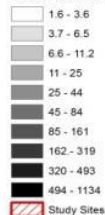




Study Sites for Research



Kansas Counties: Population per Square Mile



Rural Contexts Coping

- **Gove county**
 - Support local store
- **Linn County**
 - Local grocery store support, community hub
- **Pott. County**
 - Proximity, combine grocery shopping w/ other trips to city
- Stores and community survival: symbiotic relationship

Rural-Urban Comparison/Analysis

