

1-1-1986

## For a Landshape Architecture

Martin Price

Follow this and additional works at: <https://newprairiepress.org/oz>



This work is licensed under a [Creative Commons Attribution-Noncommercial-No Derivative Works 4.0 License](https://creativecommons.org/licenses/by-nc-nd/4.0/).

---

### Recommended Citation

Price, Martin (1986) "For a Landshape Architecture," *Oz*: Vol. 8. <https://doi.org/10.4148/2378-5853.1117>

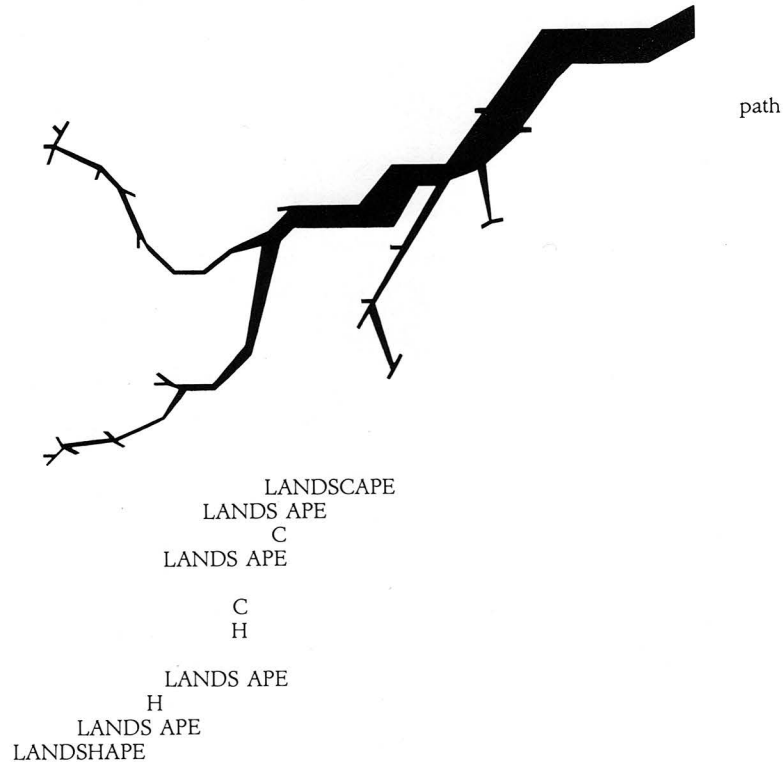
This Article is brought to you for free and open access by New Prairie Press. It has been accepted for inclusion in *Oz* by an authorized administrator of New Prairie Press. For more information, please contact [cads@k-state.edu](mailto:cads@k-state.edu).

# For A Landshape Architecture

Eagleridge Housing, Steamboat Springs, Colorado

Martin Price

Competition entry with Bob Meckfessel and Terry Benson



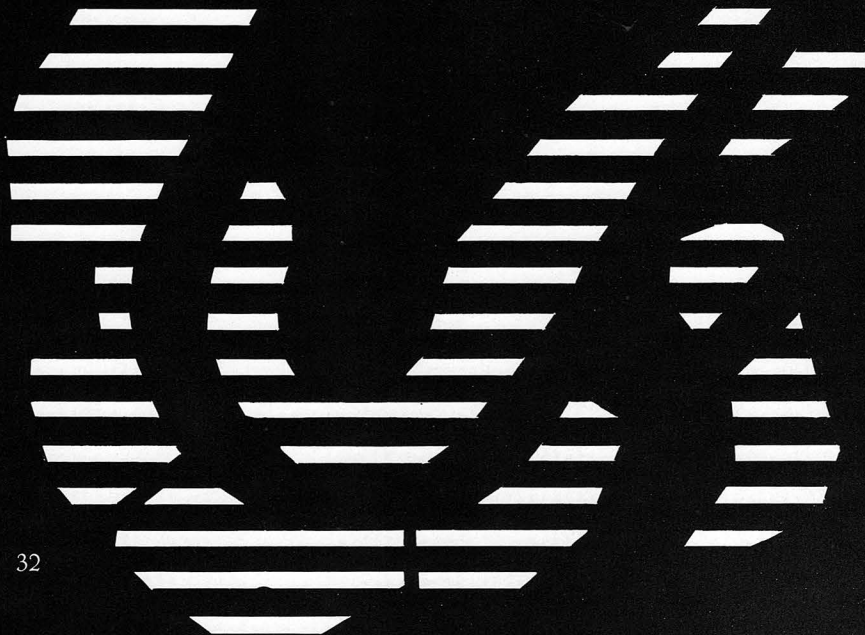
organic form

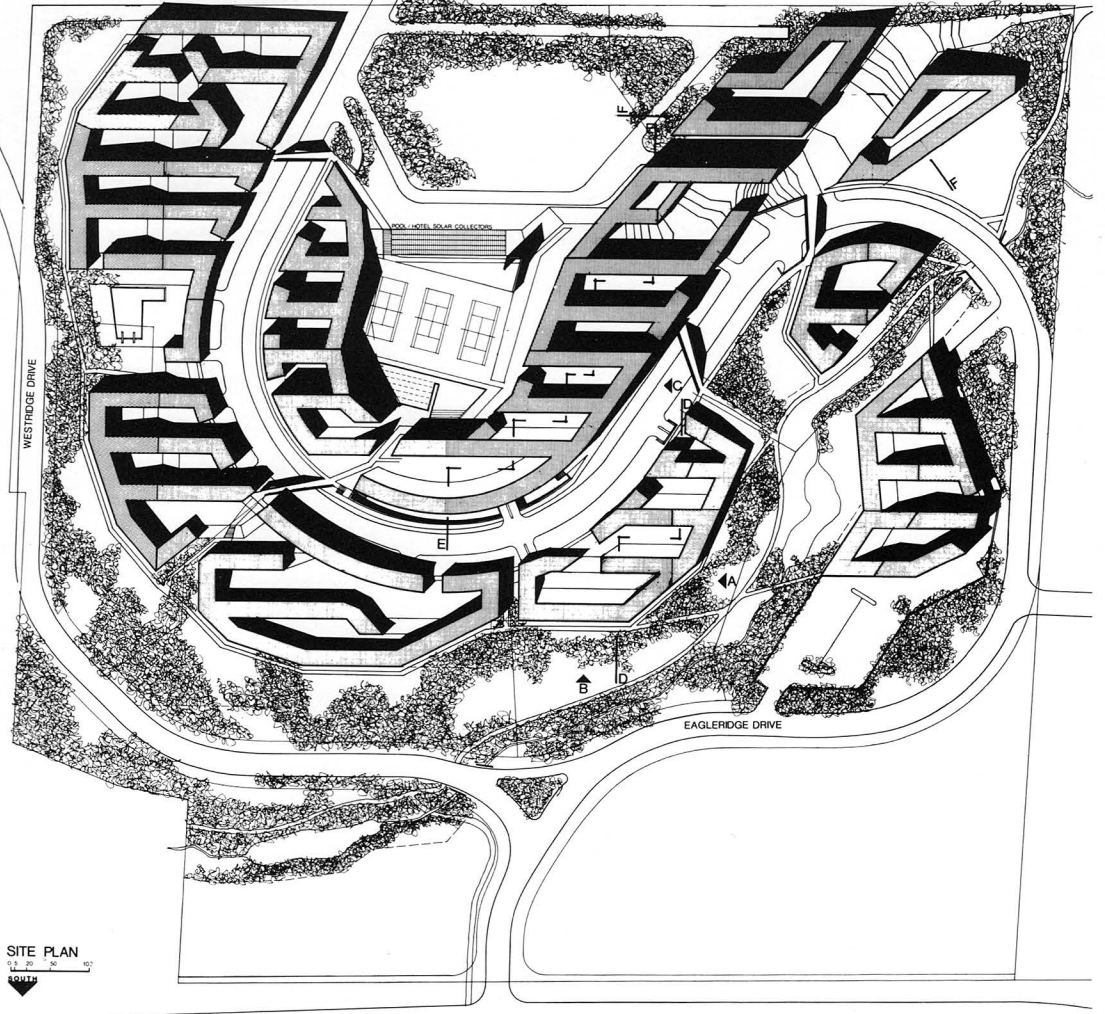
create  
with  
SPIRIT OF TIME  
and SPIRIT OF PLACE  
spontaneity and intuitivity  
welcoming not mentalling "AALTIAN HUMANISM"  
space in-between  
equal in importance  
to form defining that space  
do it first in SECTION  
for man at center in-between heaven and earth  
make 20th century man's  
horizontal and  
vertical movement  
through space and form  
flow easily and humanly  
with spirit and with

20th century DYNAMICS  
reach for daylight  
control it  
and lift our spirits with it  
and make an EXPRESSIVE architecture

with  
a return  
to the concern  
for the natural environment  
a return  
to a more natural way  
with the STRUCTURE OF NATURE  
as an inspiration  
a softening of geometry  
with sensuous continuous undulations  
like those found in the nature  
with flowing rhythms  
flowing lines  
flowing harmonies  
flowing forms  
a naturalism  
informalism  
humanism  
from the land mountains hills rocks  
forests trees trunks branches leaves  
waters rivers  
sky lightening clouds  
a naturalism  
informalism  
humanism  
COMFORTABLE

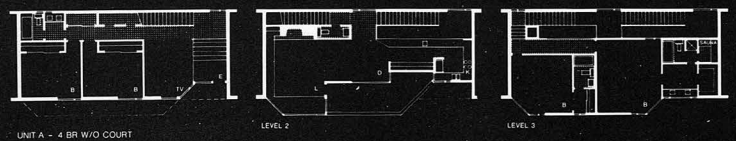
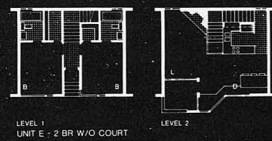
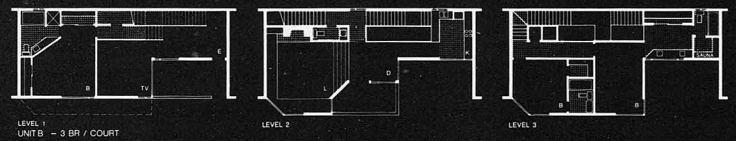
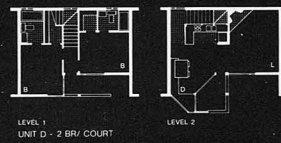
sun





wind

plan



make  
A LANDSHAPE  
architecture  
enact sculptural unity of  
landscape and building  
with the structure of NATURE  
as inspiration

parallel south facing forms  
capture THE SUN

continuously sheltered  
pedestrian path on south side of  
street is a level above  
helping to separate people  
from cars and  
THE SNOW

pedestrian paths  
that flow upward toward ski lift  
model the branching of  
THE TREES

building shapes  
gather green space and  
spaces in-between and  
thrust toward  
THE SKIING

raised three  
foot floor level  
or small entry court  
from courtyards of individual units  
achieves THE PRIVACY

sloping roofs  
model THE MOUNTAINS

landscaped courtyards  
solid forms facing north  
berms  
answer THE WIND

bay windows  
reaching for sun  
and balconies extending from  
sloping roofs  
model THE ICICLES

organic  
natural forms  
at the edges  
that respond to contours  
make a liaison with the rational  
south facing forms  
to help dissolve the distinction  
between architecture and  
THE LANDSCAPE

balance between  
communal skiing and  
solitude is achieved by  
THE COURTYARDS

