

1-1-1981

Cottonwood Racquet Club

James E. Blochberger

Keith Christensen

Follow this and additional works at: <https://newprairiepress.org/oz>



This work is licensed under a [Creative Commons Attribution-Noncommercial-No Derivative Works 4.0 License](https://creativecommons.org/licenses/by-nc-nd/4.0/).

Recommended Citation

Blochberger, James E. and Christensen, Keith (1981) "Cottonwood Racquet Club," *Oz*: Vol. 3.
<https://doi.org/10.4148/2378-5853.1027>

This Article is brought to you for free and open access by New Prairie Press. It has been accepted for inclusion in *Oz* by an authorized administrator of New Prairie Press. For more information, please contact cads@k-state.edu.

Cottonwood Racquet Club

James E. Blochberger

Critic: Keith Christensen

Program

The Cottonwood Racquet Club is a private club development located in the Little Kitten Creek region of West Manhattan, Kansas. The physical facilities of the club consist of three indoor tennis courts, five indoor racquetball courts, weight room, exercise and trimnastics room, and coed jacuzzi, suana, and a steam room.

In support of these recreational features are ample lounge areas, a snack bar, pro shop, locker rooms, and complete administrative facilities. A classroom is included to serve as a meeting room or demonstration area.

A restaurant is included but is separated from the racquet club because it was to operate as a separate entity and required a separate identity.

Outdoor club facilities consist of a diving pool, swimming pool, and three outdoor tennis courts. Ample decks are also provided for sunbathing and relaxation.

Theories/Concepts

The Cottonwood Racquet Club is designed to draw the user into the center of the complex, and once there, give him the opportunity to select and radiate outward to the various activities available. This center is accentuated by the stair tower which rises above the complex acting much like the axis of a pinwheel. From here, the participant can easily move into any facility

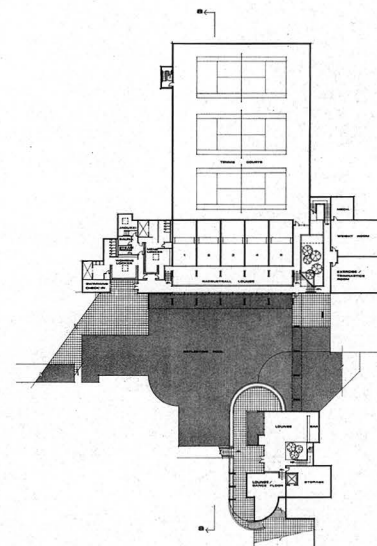
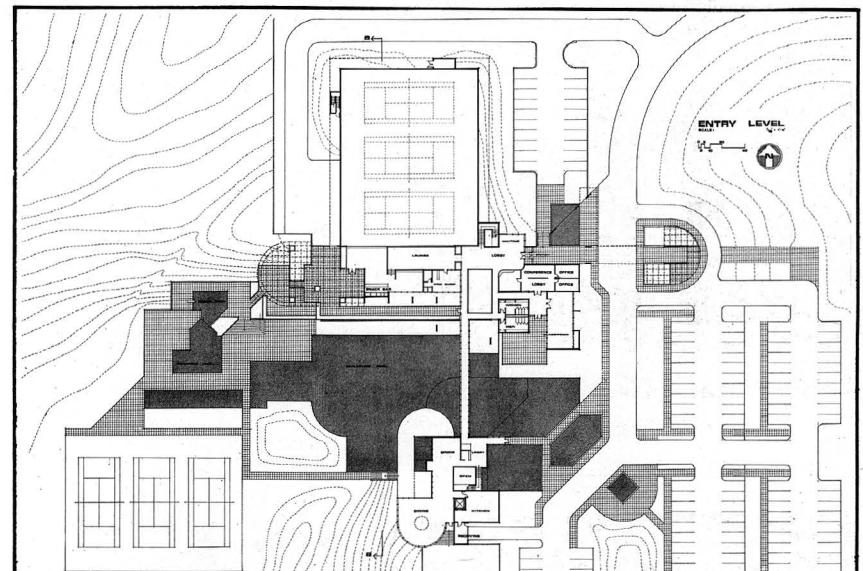
within the club, including the lounge to view indoor tennis, the restaurant or bar, the locker rooms downstairs, or the exercise rooms and racquetball courts. This core of the complex features a large planter on the lower level and remains open to the ceiling of the first level, where a large skylight offers light and contributes to a sense of spaciousness for the entire complex. The open plan gestures and the skylights are intended to relate the participants to their surroundings by drawing the different levels together into a unified structure.

Water is an important and active part of the total design. It is used to separate the Racquet Club from the restaurant and bar, as well as to offer recreational features and visual stimulation to the users.

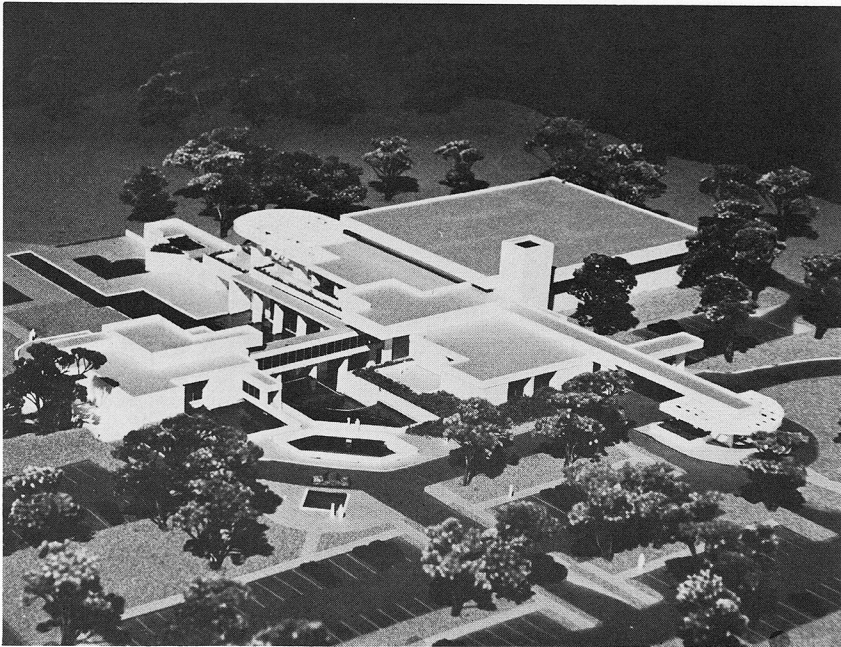
The water originates from four fountains at the upper entries of the building and cascades down a series of waterfalls until it reaches the large reflecting pool at the lower level of the club.

This reflecting pool highlights and sets apart the Racquet Club from the surrounding exterior elements. It also serves a double purpose, as it is used during the winter for ice-skating.

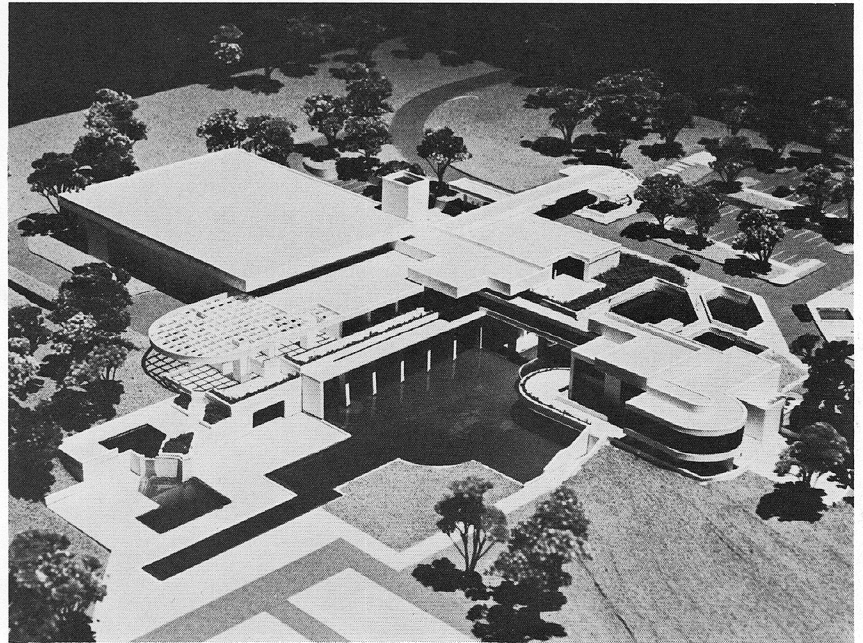
The buildings orientation, glazing, positioning and overhangs are developed to make appropriate use of solar gain.



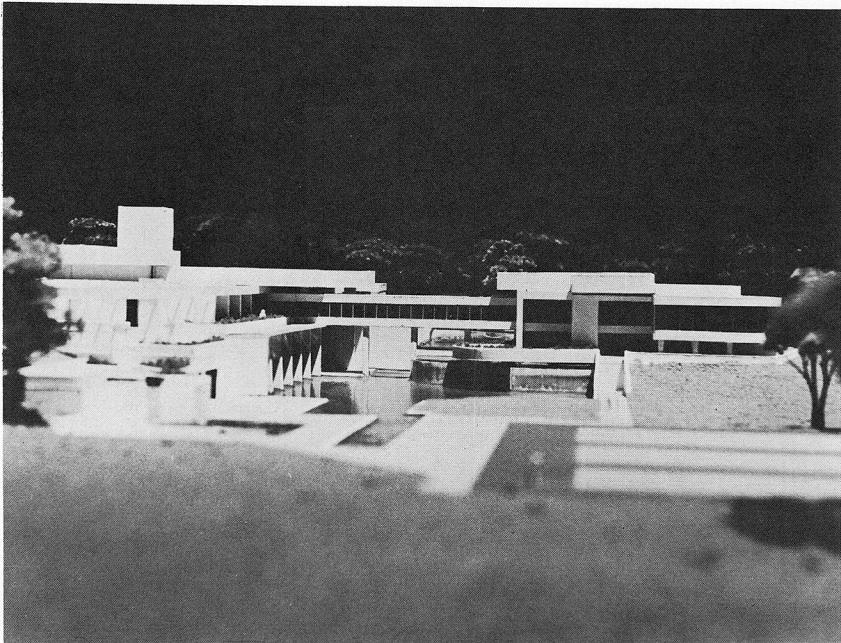
Entry level plan
Lower level plan



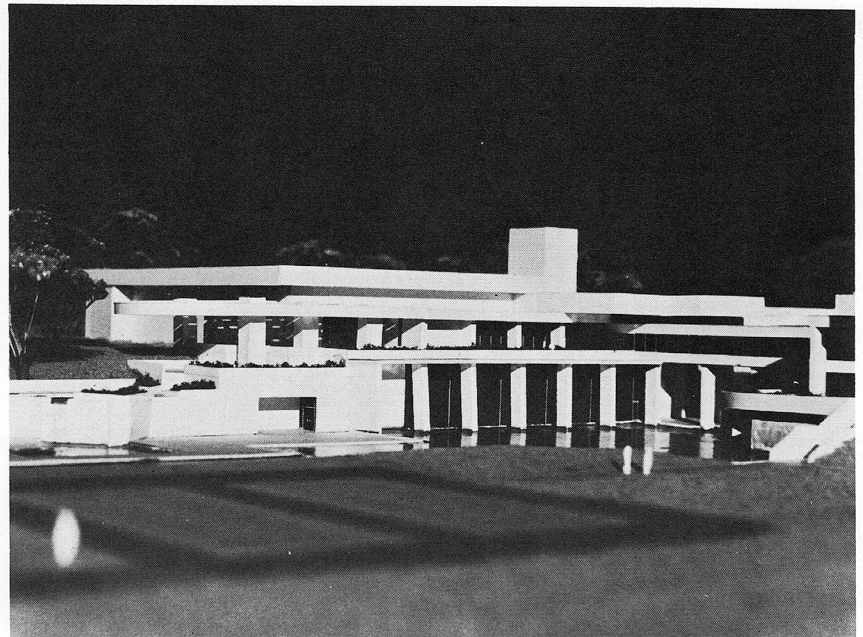
View looking northwest



View looking northeast



View looking east



View looking north