



Digital Commons@

Loyola Marymount University
LMU Loyola Law School

Dance Undergraduate Theses

Dance

5-8-2015

Jesse J: The SurREALism Tour

Joshua Rivera

Loyola Marymount University

Follow this and additional works at: https://digitalcommons.lmu.edu/dance_theses



Part of the [Dance Commons](#), [Other Theatre and Performance Studies Commons](#), and the [Performance Studies Commons](#)

Recommended Citation

Rivera, Joshua, "Jesse J: The SurREALism Tour" (2015). *Dance Undergraduate Theses*. 111.
https://digitalcommons.lmu.edu/dance_theses/111

This Campus Access only theses is brought to you for free and open access by the Dance at Digital Commons @ Loyola Marymount University and Loyola Law School. It has been accepted for inclusion in Dance Undergraduate Theses by an authorized administrator of Digital Commons@Loyola Marymount University and Loyola Law School. For more information, please contact digitalcommons@lmu.edu.

Senior Thesis

Jessie J: The SurREALism Tour

Joshua Rivera

Mentors:
Professor Jason Myhre

In partial fulfillment of
The Bachelor of Arts Degree in Dance
Loyola Marymount University
May 8, 2015

Jessie J: The SurREALism Tour

TABLE OF CONTENTS

I.	RESUME AND HEADSHOTS	
A.	RESUME FOR DANCE	3
B.	RESUME FOR JOB	4-5
C.	CURRICULUM VITAE	6-8
D.	HEADSHOTS	9-11
II.	SENIOR THESIS PROJECT	
A.	SHORT DESCRIPTION OF PROJECT	12
B.	ARTWORK	13-15
C.	SET LIST	16
D.	CUE TO CUE SHEET	17-51
III.	COURSE REFLECTIONS AND DANCE RESEARCH	
A.	COURSE SUMMARIES	52-60
B.	DANCE PERSPECTIVES ESSAY	61-67
IV.	AESTHETIC STATEMENT	68-71
V.	REFLECTION ON LMU MISSION STATEMENT	72-74
VI.	MOVING TO A CITY	75
VII.	APPENDIX	76-82

Jessie J: The SurREALism Tour

Mentors:

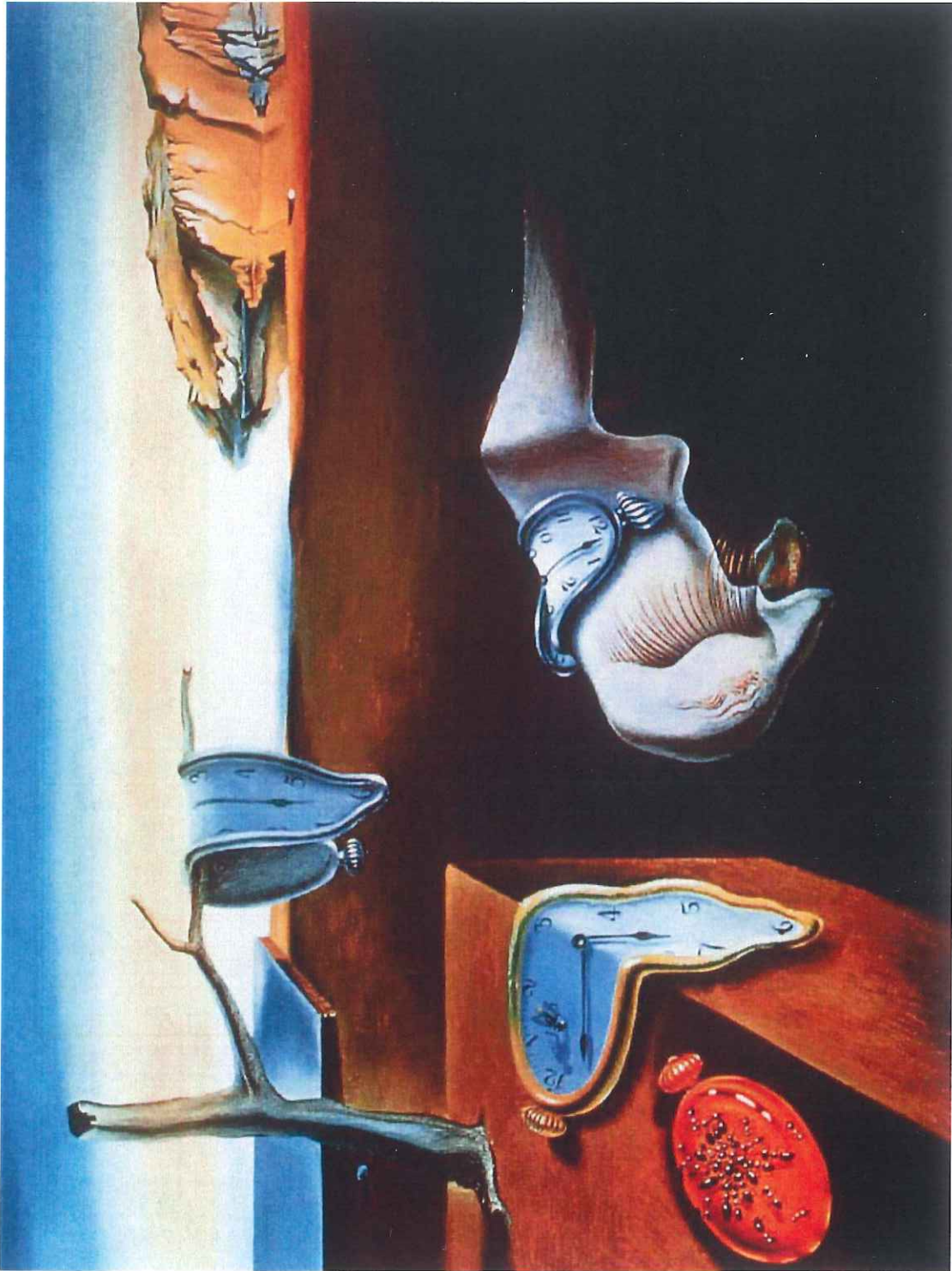
Professor Jason Myhre

Professor Judith Scalin

Jessie J: The SurREALism Tour is a compilation of ideas for a mock national tour. This work is done in the mindset of a creative director and explores the possibilities of stage design, set list, lighting, costumes and cue sheets inspired by art painted by the surrealist Salvador Dalí. This project is all encompassing and is not easy to do in sections. In order to create a fluid show the project was created in chunks of songs. As if this was to become a real tour, I incorporated possible staging that drives the music to tell a story in each section. I choose to work with *The Persistence of Memory*, *Anthropomorphic Chest of Drawers*, and *The Meditative Rose*. These paintings also were the story line for possible video ideas that would play throughout the show.

These are very distinct paintings that all have a different moods correlating with them. Being challenged by these paintings I learned how to dig deeper to develop a through line that would connect the show together. By incorporating these paintings, I was able to draw inspiration for costume and lighting. My work on this production forced me to think critically about originality and delving into creative processes that promotes two distinct artists. I researched how lighting effects audience members and implemented the information I gathered into the show. This project also looks at costume designs to promote the artwork and the continuity of the show. Ultimately, my thesis combined elements of stage design, costume design, and videography into an evening of Jessie J's impeccable voice.

The Persistence of Memory



The Anthropomorphic Chest of Drawers



The Meditative Rose



JESSIE J: THE SURREALISM TOUR

Section 1 - "The Persistence of Memory"

Masterpiece
Clocks (Cover)
Fire
Burnin' Up
Wild
Time After Time

Section 2 - "Anthropomorphic Chest of Drawers"

Stay With Me
Flashlight
Get Away
I Have Nothing
Casualty of Love
Get Here
Titanium

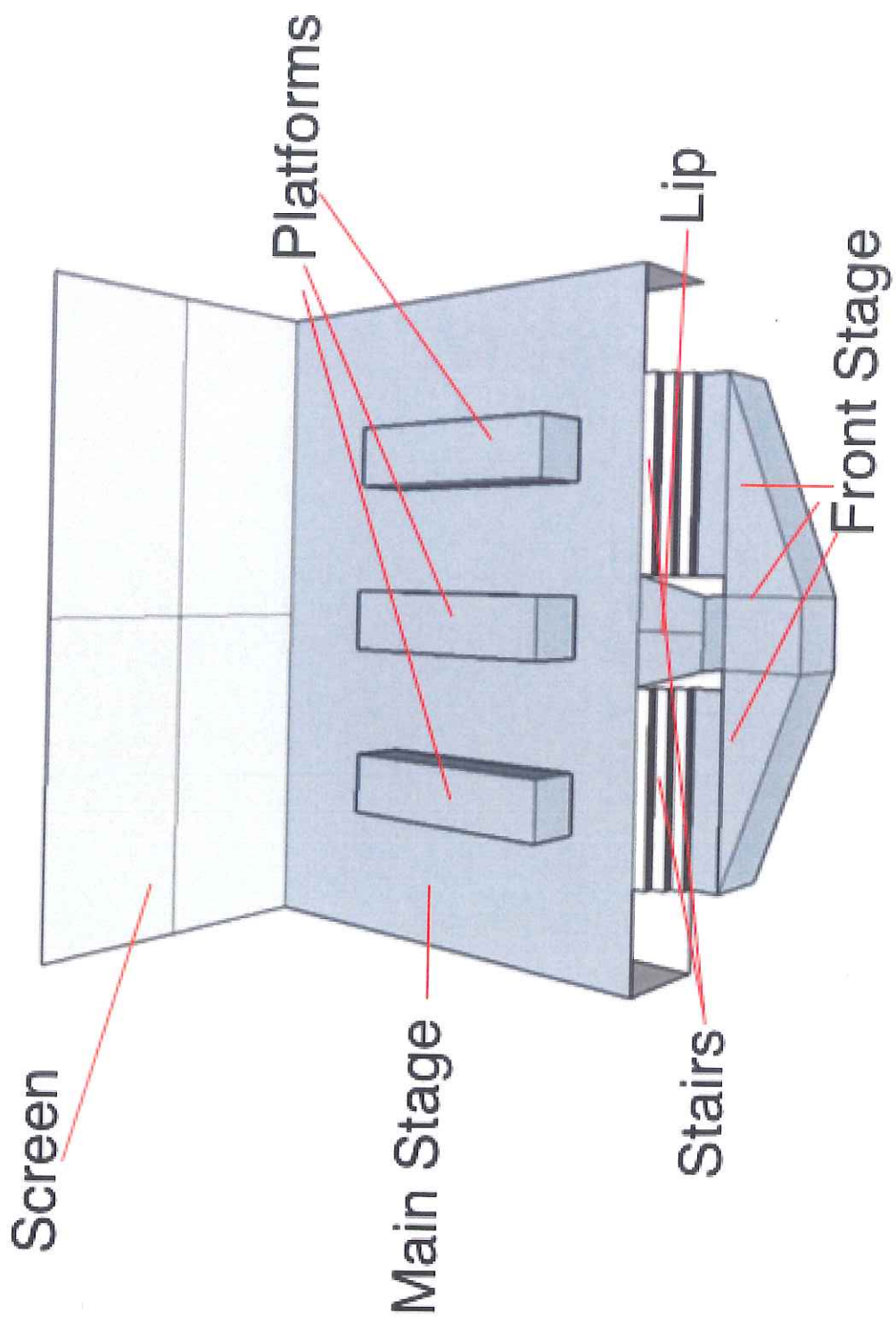
Section 3 - "The Meditative Rose"

Bang Bang
Sweet Talker
Thunder
Domino
I Wanna Dance With Somebody
Daydreamin'
Gold

Encore

Do It Like A Dude
Mama Knows Best

JESSIE J:
THE
SURREALISM
TOUR



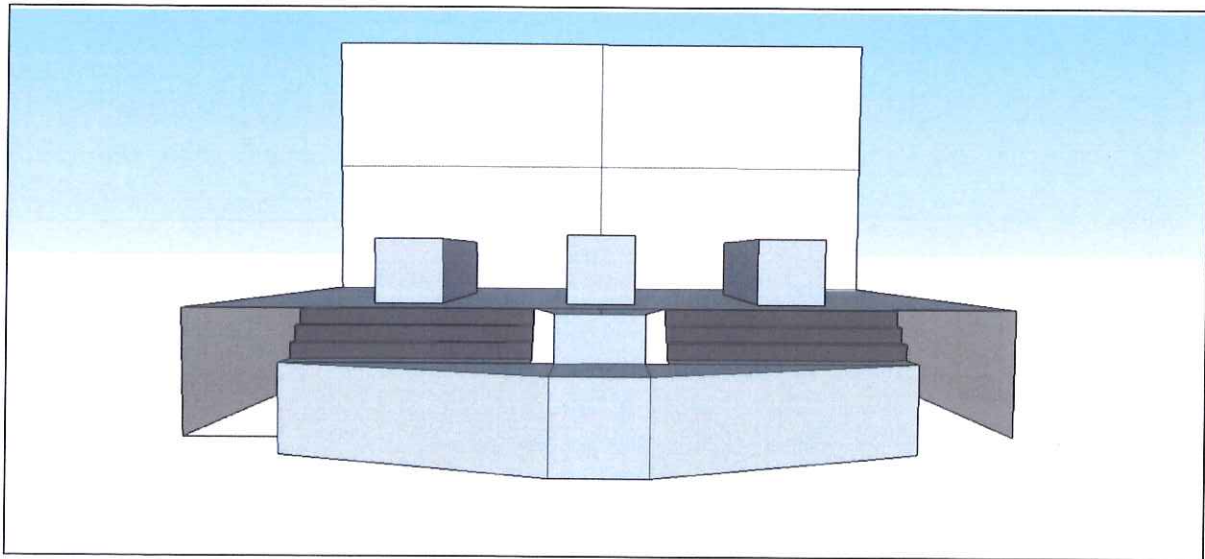


TOP OF SHOW

- Curtains closed
- Platforms down
- Jessie behind center curtain
- Mic in hand
- Tour logo projected on curtain.

INTRO

- Voice Over: *Jessie J; an artist who uses fantastic images and incongruous juxtaposition in order to represent her unconscious thoughts, music, and dreams ... Welcome to The SurREALism Tour*



APPLAUSE

MASTERPIECE (1)

TOP

- Jessie standing behind curtain at center stage Mic in hand
- Mic stand on lip
- Dancers 3 platforms painting

STAGING

- Curtain open at top of music. Opens only to reveal Jessie.
- Jessie walks to lip with single spot on her
- Stage is dark behind the curtain
- Curtain opens up all the way on "uphill battle"
- Lights go up on stage when curtains open full- Creating a dessert feel
- Video 1 begins at first chorus - *The Persistence of Memory* shows up disassembled on screen to then fix like a jigsaw puzzle
- End: Mic in hand, center stage

LIGHTS

- Single Spot on middle artist at end
- Stage around dark

MIC STAND

- Dancer takes off mic stand at end of the song
- Mic in Jessie's hand

APPLAUSE

CLOCKS (2)

TOP

- Platforms lower
- Easels carried off stage
- Single spot holds on middle dancer and easel

SCREEN

- Clocks falling/ raining

LIGHTING

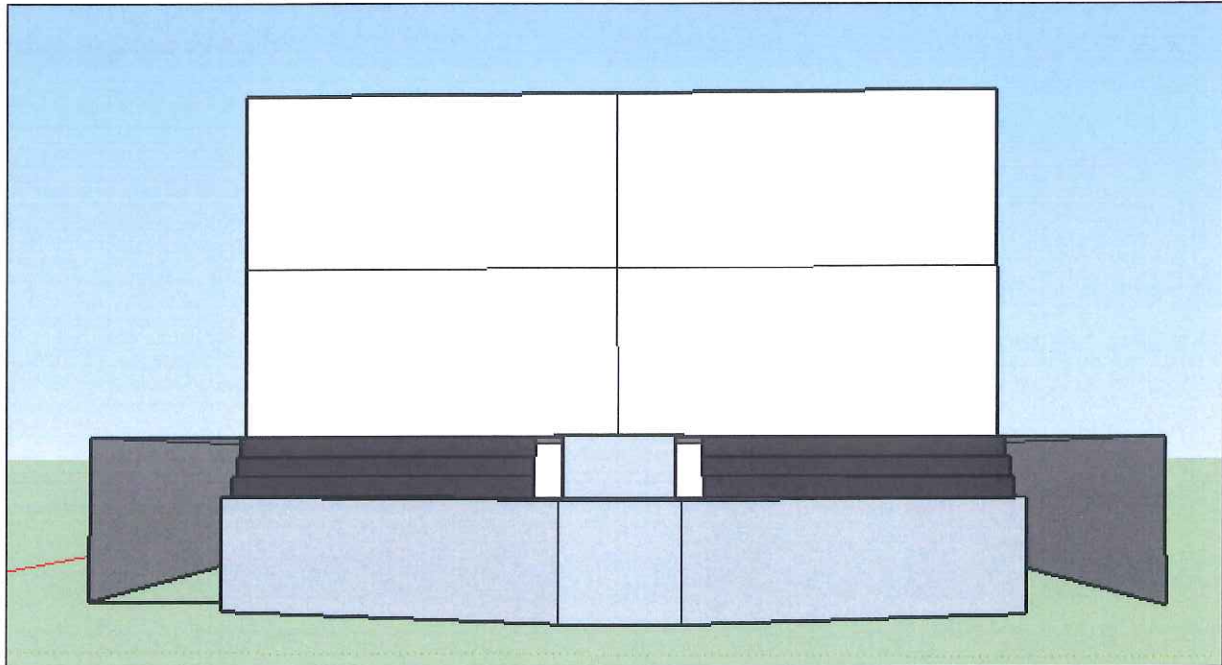
- Storm - Blues, Dark Colors
- Lights changing frequently

STAGING

- Jessie walks to seat as dancer gets up when vocals start

END

- Jessie in chair
- Mic in hand



APPLAUSE

FIRE (3)

TOP

- Jessie center stage
- Mic in hand

STAGING

- Walks down stairs stage left to get to front box
- Dancers on main stage - Samba routine

LIGHTING

- Fire
- Red/Orange

SCREEN

- Video: In the eyes of someone walking through a house of fire. Walks up to easel with raining clocks painting. Clocks melting in fire.
- Clocks melting

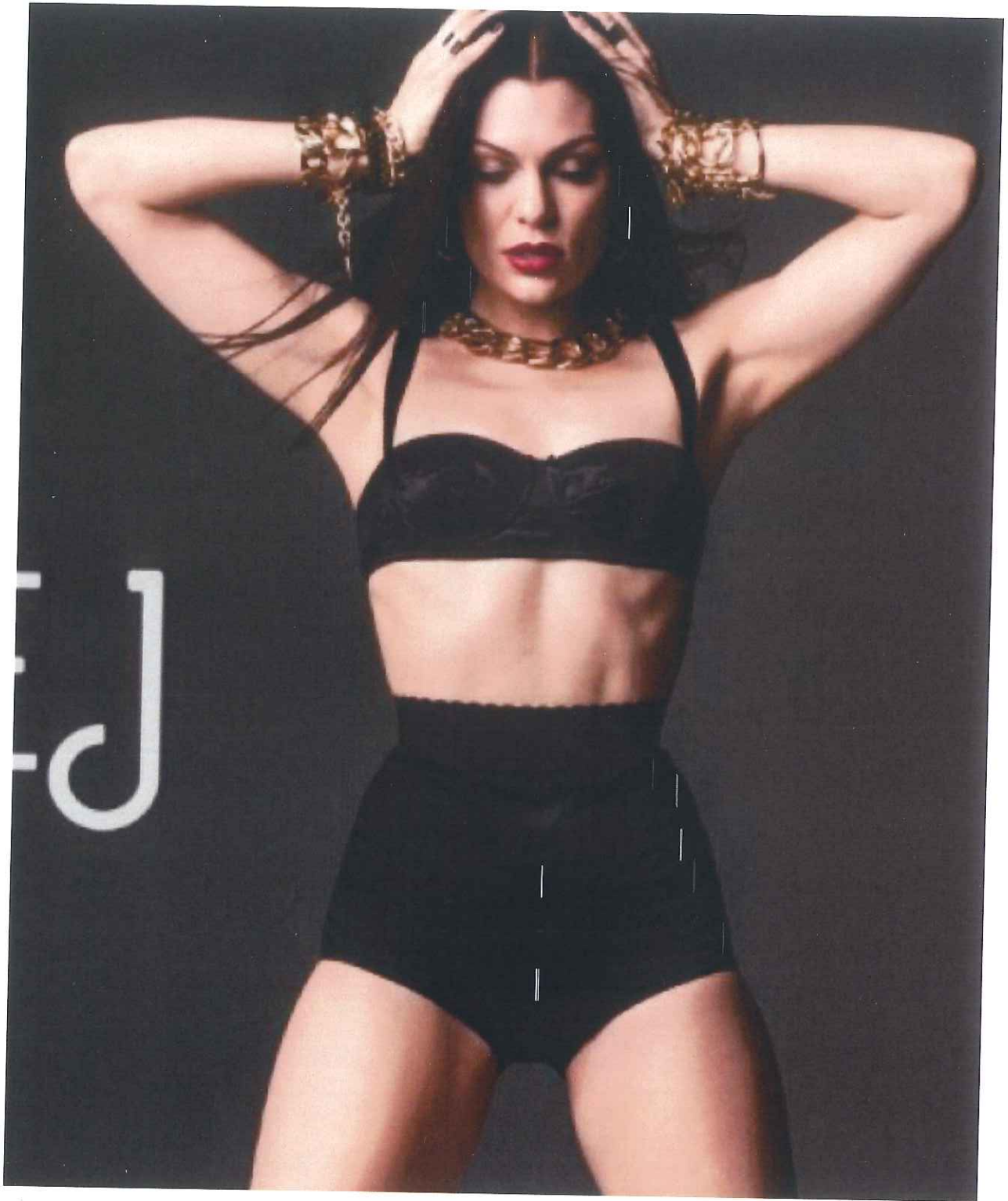
END

- Jessie center on front box
- Mic in hand

WARDROBE @ END

- Jessie Drops under lip to costume change

APPLAUSE



BURNIN' UP (4)

TOP

- Jesse walks up stairs to center stage on main stage
- Dancers join on main stage

STAGING

- Walks down during 2nd verse with girls

LIGHTING

- Fire
- Red/orange/yellow

SCREEN

- Video: Zooms out of painting, house fire, house, turns faces mirror, Jesse with fire in her eyes

•

END

- Lighting: Red, Orange, Yellow
- Screen: Fire zooms out to Jessie J eyes... video starts the song

WARDROBE CHANGE @ END

APPLAUSE



TIME AFTER TIME (6)

TOP

- Guitar Solo
- Mic stand on lip

LIGHTING

- Search lights during guitar solo
- Orange/ Yellow
- Bright as if clouds were clearing

SCREEN

- Video: Persistence Of Memory - clocks becoming normal and showing up in different places around the world – ends with the clock in an alley in London
- Video starts during second chorus

WARDROBE CHANGE @ END

APPLAUSE



STAY WITH ME (7)

TOP

- Jessie center lip
- Mic Stand on lip
- Platforms lowered

LIGHTING

- Single white spot of Jessie
- Spots on dancers stage left

SCREEN

- Video: Video clips during chorus of couple fighting, looked at through a window. Closing shot of plate being thrown across as door slams

END

- Mic stand removed
- Robe removed by dancers

APPLAUSE

FLASHLIGHT (8)

TOP

- Jessie walks down stairs
- Dancers on stage
- Platforms lowered

LIGHTING

- Search lightings in red
- Whole stage light during chorus
- Emerald when big not is hit

SCREEN

- Black

STAGING

- Jessie at front stage
- Dancers contemporary choreography

END

- Girls leave the stage
- Boys walk to Jessie

APPLAUSE

GET AWAY (9)

TOP

- Clock Chimes: Boys carry Jessie to center up stage
- Mic in hand

STAGING

- Jessie walks down center
- Platform rises on first chorus

LIGHTING

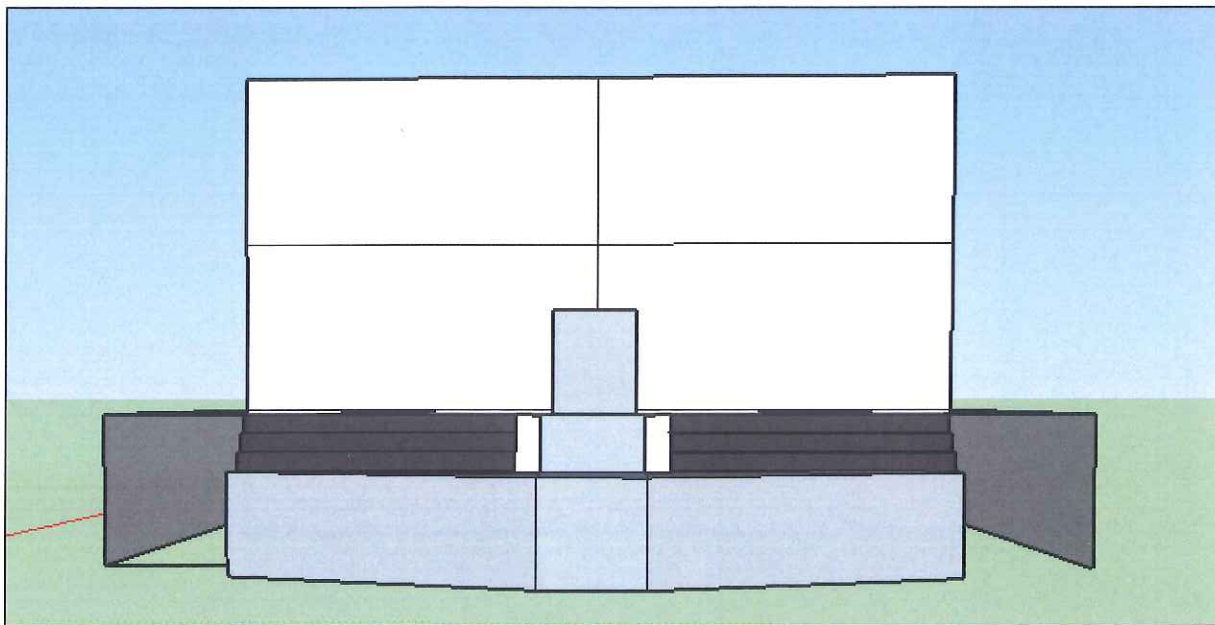
- Dark Green/ Red
- Cloudy, Smoke used
- Laser lighting from sides

SCREEN

- Mimic red laser lighting

END

- Jessie turns around as platform lowers to stage position



APPLAUSE

I HAVE NOTHING (10)

TOP

- Platform lowers
- Jessie walking to lip
- Mic in hand

LIGHTING

- Deep red, purple, blue
- Spotlight on Jessie as she walks forward

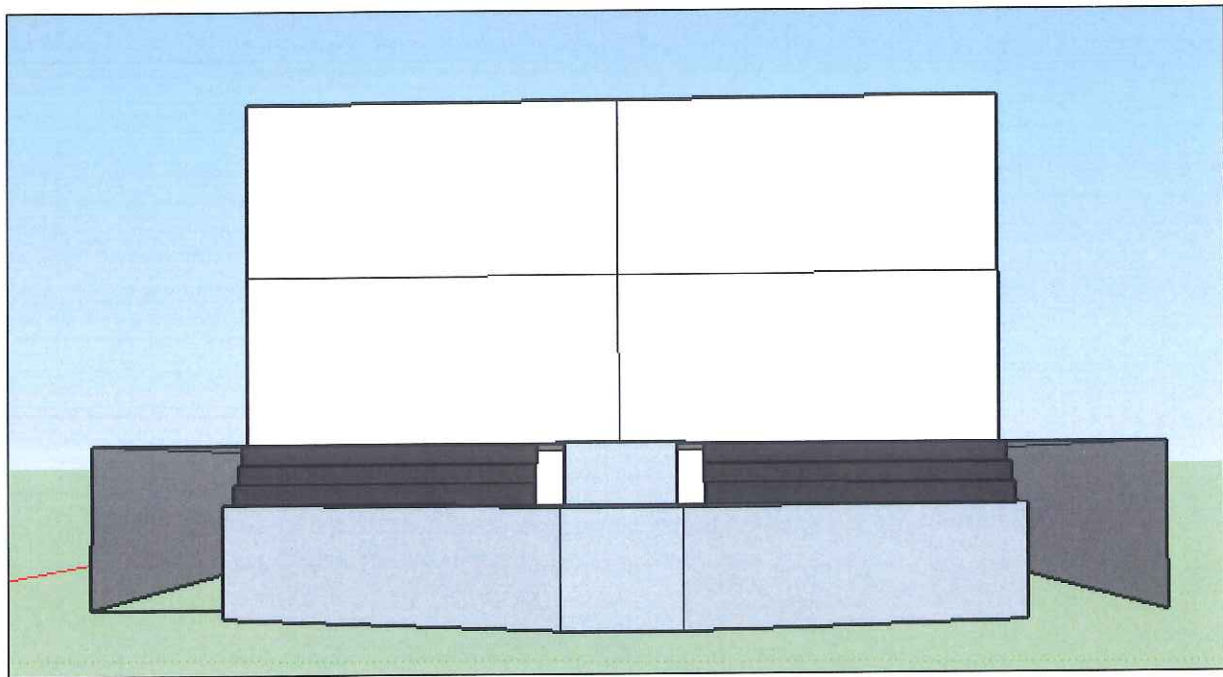
SCREEN

- Images of different sections of "Anthropomorphic Chest of Drawers"
- Video starts on second chorus: Picks up where left off... shadow walking through streets in alleys, stumbling

END

- Dancers walk in from side, during last notes
- Dancer places chair on front stage
- Jessie downstage center
- WARDROBE CHANGE

WARDROBE CHANGE @ END



APPLAUSE



E

CASUALTY OF LOVE (11)

TOP

- Jessie walks to stage left platform
- Platform rises
- Dancers samba routine on stage

LIGHTING

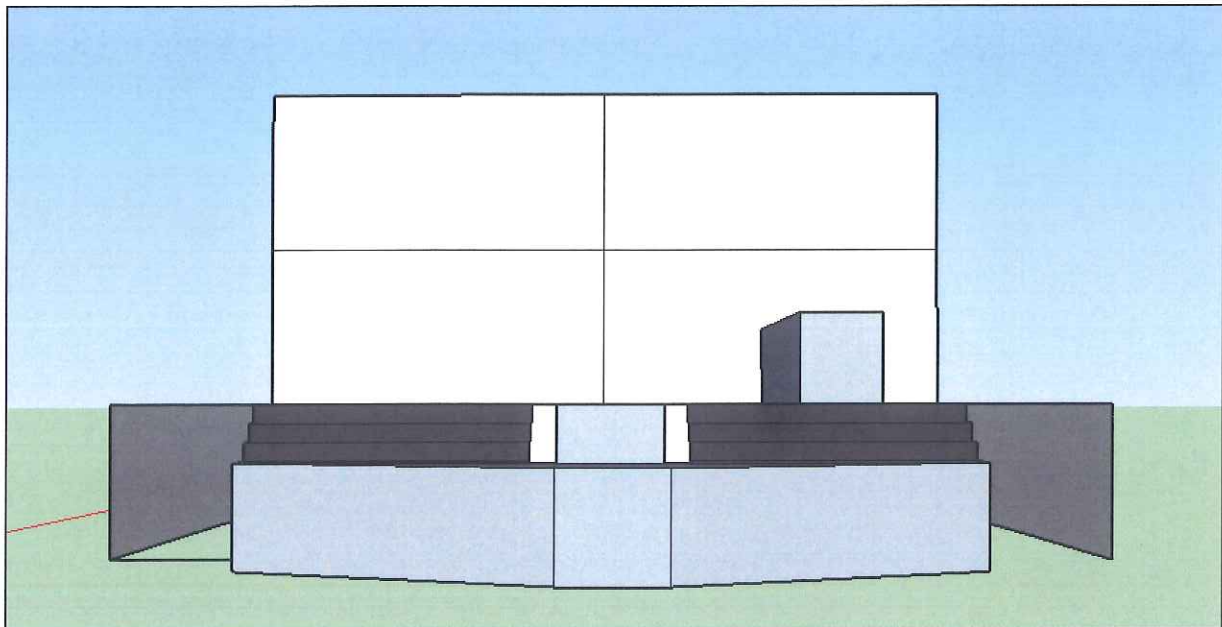
- Dim lighting:
- Lighting from the back
- Shadows

SCREEN

- Video: Shadows: foggy scene

END

- Jessie stays on front stage



APPLAUSE

GET HERE (12)

TOP

- Platform lowers
- Fog rolling across the floor of the stage

LIGHTING

- Dim lighting

SCREEN

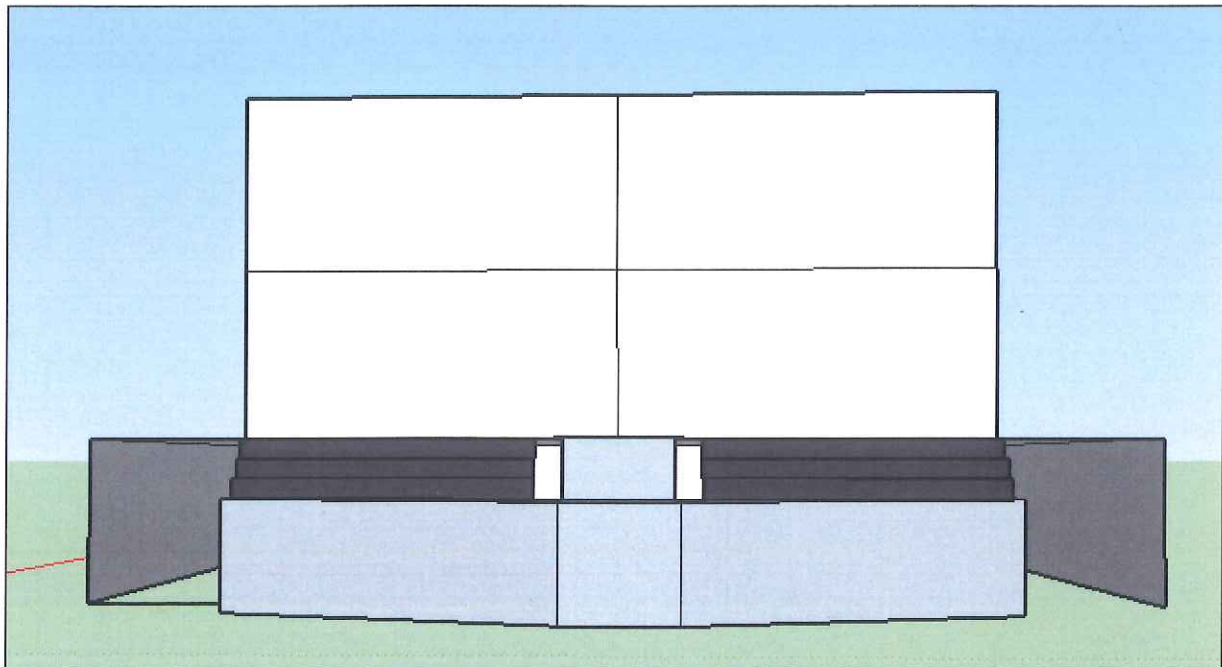
- Anthropomorphic Chest of Drawers on Screen in full

STAGING

- Jessie crosses to center down stage on main stage to sing

END

- Jessie stays on front stage



APPLAUSE

TITANIUM (13)

TOP

- Jessie at front stage center
- Mic in hand

LIGHTING

- @ top: only front stage/ Jessie lit
- Main stage dark
- Girl appears at first chorus on stage right
- Girl appears at stage left on second chorus
- @ end: spots on three girls from top - cone

SCREEN

- Video: Man of chest slowly regains humanity to be back on the streets of London

END

- Jessie with two girls standing in front of platforms
- Mic in hand

WARDROBE CHANGE @ END

APPLAUSE

