

Victoria Marshall

marshallv@newschool.edu

design in urban in ecology

“Million TreesNYC, Green Infrastructure and Urban Ecology: A Research Symposium, March 5-6, 2010”

Copyright 2010 by the authors. All rights reserved. This work is licensed to the public under the Creative Commons Attribution License. Cities and the Environment is produced by the Urban Ecology Program, Department of Biology, Seaver College, Loyola Marymount University in cooperation with the USDA Forest Service. Published by The Berkeley Electronic Press (bepress). <http://catejournal.org>

CHANGE DETECTION: SPRING 2010 (L&C), BRIAN WICOMPTON WITH JEAN GARDNER, JOSE DELEU, VICTORIA MARSHALL, TAYLOR JARREL, TRICK SHIRRELL, OREG PUDONOVICH

urban design in the city



CRIGA LAB: SPRING 2010 FOUNDATION PARKING, BRIAN WICOMPTON, VICTORIA MARSHALL



CITY AND ENVIRONMENT: FALL 2009 GRADUATE PROGRAM INTERNATIONAL AFFAIRS, VICTORIA MARSHALL WITH BRINA SHREIBER, LINDSEY CAMPBELL, FROM LEFT

ecology of the city



HENRY HIDDEN FORGOTTEN MAPS: SUMMER 2009 IMPRINTS IN THEATER, VICTORIA MARSHALL, JOSE DELEU



CHNOMETRICS WORKSHOP: SPRING 2008 AND FALL 2009 CHAI HAO COLLEGE HOUSING HOUSING AND PARKING, BRIAN WICOMPTON, JOSE DELEU, VICTORIA MARSHALL, PAUL CHAI, HUIYI CHENG LEI

ecology of design in the city



URBAN DRAWING: FALL 2009 INTEGRATED DESIGN PROGRAM PARKING, JOSE DELEU, VICTORIA MARSHALL



URBAN MODELS AND DIGITAL MODELING FOR URBAN DESIGN: SPRING 2009 INTEGRATED DESIGN PROGRAM AND ARCHITECTURE PARKING, BRIAN WICOMPTON, VICTORIA MARSHALL WITH EUGENE CHAI, PHAM THI SONHANGHIA

design of the ecology of the city

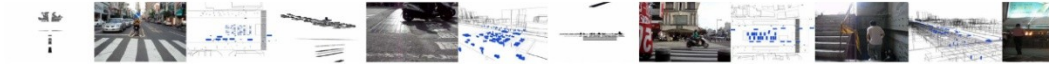


SPRING LIVES: SUMMER 2009 IMPRINTS IN THEATER, VICTORIA MARSHALL, JOSE DELEU



CHNOMETRICS WORKSHOP: FALL 2008 FOUNDATION PARKING, BRIAN WICOMPTON, JEAN GARDNER, JOSE DELEU, VICTORIA MARSHALL

design in the ecology of the city



CHNOMETRICS WORKSHOP: SUMMER 2008 NATIONAL CHENG KUNGS UNIVERSITY TAIWAN AND PARKING, BRIAN WICOMPTON, JOSE DELEU, VICTORIA MARSHALL, PAUL CHAI, HUIYI CHENG LEI



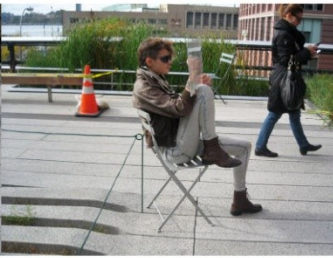
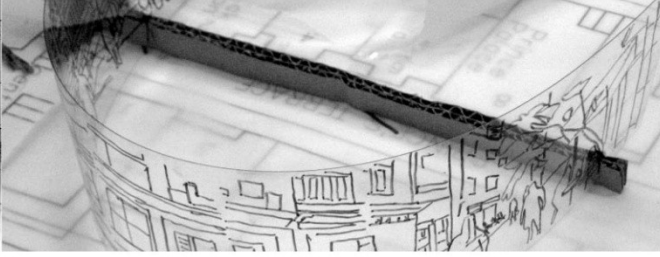
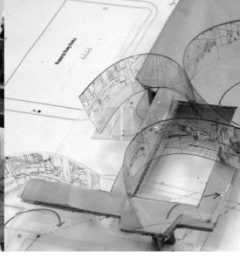
THE RIVER THAT FLOWS BOTH WAYS: SUMMER 2009 IMPRINTS IN THEATER, VICTORIA MARSHALL, DL HOGA

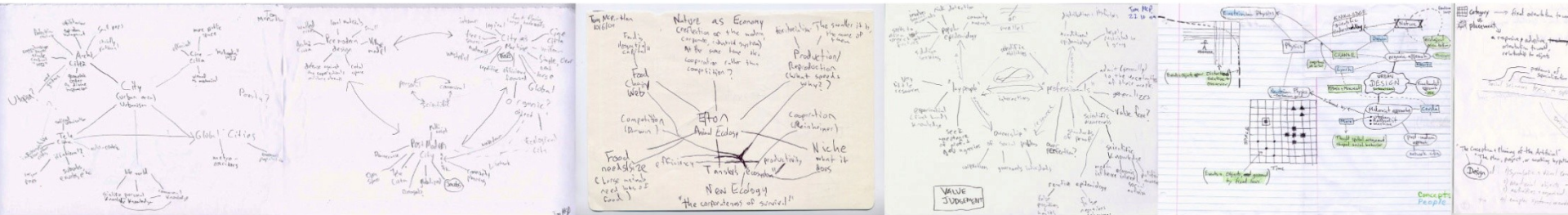
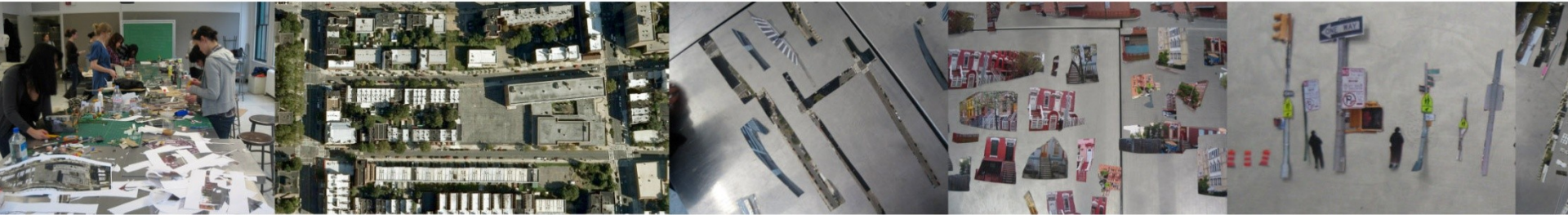
ecology in design in cities



THREE ECOLOGIES: FALL 2009 ARCHITECTURE PARKING, VICTORIA MARSHALL, EUGENE CHAI, PHAM THI SONHANGHIA

DRAWINGLAB/PARKS/CSUS





Marshall: Design in Urban in Ecology

