

Exploring Environmental Kuznets Curves of Kitakyushu: 50-year Time-series Data of the OECD SDGs Pilot City ¹

Quan-Hoang Vuong

Centre for Interdisciplinary Social Research, Phenikaa University
Yen Nghia Ward, Ha Dong District, Hanoi, 100803, Vietnam

Manh-Tung Ho

Centre for Interdisciplinary Social Research, Phenikaa University
Yen Nghia Ward, Ha Dong District, Hanoi, 100803, Vietnam

Hong-Kong To Nguyen

Graduate School of Asia Pacific Studies, Ritsumeikan Asia Pacific University, 874-8577, Japan
Vuong & Associates, 3/161 Thinh Quang, Dong Da District, Hanoi, 100000, Vietnam

Minh-Hoang Nguyen

Centre for Interdisciplinary Social Research, Phenikaa University
Yen Nghia Ward, Ha Dong District, Hanoi, 100803, Vietnam

(*) Correspondence: hoang.vuongquan@phenikaa-uni.edu.vn

Abstract

Can green growth policies help protect the environment while keeping the industry growing and infrastructure expanding? The City of Kitakyushu, Japan, has actively implemented eco-friendly policies since 1967 and recently inspired the pursuit of sustainable development around the world, especially in the Global South region. However, empirical studies on the effects of green growth policies are still lacking. This study explores the relationship between road infrastructure development and average industrial firm size with air pollution in the city through the Environmental Kuznets Curve (EKC) hypothesis. Auto-Regressive Distributed Lag (ARDL) and Non-linear Auto-Regressive Distributed Lag (NARDL) methods were applied on nearly 50-years' time series data, from 1967 to 2015. The results show that the shape of the EKC of industrial growth, measured by average firm size, depends on the type of air pollution: inverted N-shaped relationships with NO₂ and CO, and the U-shaped relationships with falling dust particle and O_x.

Regarding infrastructure development, on the one hand, our analysis shows a positive effect of road construction on alleviating the amount of falling dust and CO concentration. On the other hand, the emissions of NO₂ and O_x are shown to rise when plotted against road construction. The

¹ This is the working draft of an accepted manuscript with Palgrave Communications (Nature Research). For proper referencing, please use the following suggested citation:

Vuong QH, Ho MT, Nguyen HKT, Nguyen MH. (2019). The trilemma of sustainable industrial growth: Evidence from a piloting OECD's Green city. *Palgrave Communications* 5; DOI: 10.1057/s41599-019-0369-8; <https://www.nature.com/articles/s41599-019-0369-8>.

decline of CO emission, when plotted against both industrial growth and road development, indicates that the ruthlessness of the local government in pursuing green growth policies is effective in this case. However, the story is not straightforward when it comes to other air pollutants, which hint at limits in the current policies. The case of Kitakyushu illustrates the complex dynamics of the interaction among policy, industry, infrastructure, and air pollution. It can serve as an important reference point for other cities in the Global South when policies are formed, and progress is measured in the pursuit of a green economy. Finally, as an OECD SDGs pilot city and the leading Asian green-growth city, policymakers in Kitakyushu city are recommended to revise the data policy to enhance the findability and interoperability of data as well as to invest in the application of big data.

Keywords: air pollution reduction; industrial growth; infrastructure development; Environmental Kuznets Curve; green growth; green economy; urban studies; sustainability; non-linear ARDL; Global South.

Version: #5; November 29, 2019



Introduction

Until now, Earth is the only known planet that shelters life, and this life is under threat (Wallace-Wells, 2019). Nonetheless, many who are in power are not willing to act to protect it. In a recent discovery, the Trump Administration tried to block a State Department senior intelligence analyst to give testimony on climate change (Friedman, 2019). However, on the other side of the globe, the City of Kitakyushu, Japan, with governmental support, has been pursuing environment-friendly industrial policies since 1967 (Low, 2013), and in 2011, it was selected by OECD to be among four Green Growth Cities in the world besides Paris, Stockholm, and Chicago (City of Kitakyushu, 2018). Kitakyushu city is also the inspiration of other cities in the Global South, such as Hai Phong – Vietnam and Surabaya – Indonesia, in pursuing sustainable development (Japan for Sustainability, 2013). This article presents striking results that could help evaluate the long-term impacts of the green growth policies in Kitakyushu on the relationship between industrial growth and infrastructure development with ambient air emissions.

The Environmental Kuznets Curve (EKC) hypothesis, grounded on the commonly assumed idea of “growth first, clean later” (Kijima et al., 2010; Özokcu and Özdemir, 2017), is relatively well-known among the theories that seek to explain the interaction between economic development and environmental degradation. This study explores the EKC of industrial growth (measured by average industrial firm size) and air pollution, as well as road infrastructure development (measured by the total area of paved road) and air pollution. The five ambient air pollutants being studied are falling dust, SO_x, NO₂, O_x, and CO. The primary anthropogenic sources of these air pollutants include fossil fuel and biofuel combustion resulting from energy generation, transport, and industry (Anenberg et al., 2018; Lamsal et al., 2013; Lelieveld et al., 2015; Zhong et al., 2017). Air pollution is not only responsible for the death of more than four million people globally (WHO, 2019) but is also linked to climate change, which has disrupted almost every aspect of human existence (Barnes et al., 2019; Mora et al., 2018). Besides the direct effects of the greenhouse gases, CO can indirectly intensify climate change through prolonging the lifetime of GHGs, oxidizing into CO₂, and reacting with NO_x and volatile organic compounds to form tropospheric ozone (Daniel and Solomon, 1998; Strode et al., 2015).

Since the first empirical results of the EKC (Grossman and Krueger, 1991; Panaïotou, 1993; Shafik and Bandyopadhyay, 1992), the debate around the hypothesis has become more controversial with evidence on both sides (Crespo Cuaresma et al., 2017; Ota, 2017; Özokcu and Özdemir, 2017). In the literature of EKC, real GDP and GDP per capita are the most frequently used economic indicators to explore the EKC in all types of data, from panel data (Ge et al., 2018; Narayan and Narayan, 2010; Ozcan, 2013; Sharma, 2011; Sinha and Bhattacharya, 2016), to time-series (Ahmad et al., 2017; Ali et al., 2017; Bölük and Mert, 2015; Rafindadi, 2016) and cross-sectional data (Hill and Magnani, 2002). However, there appears a scarcity of studies done on the EKC of industrial growth, despite the fact that industrial growth contributes substantially to economic growth and exert major effects on environmental degradation. Some recent studies include those of Abokyi et al. (2019) examining the EKC of industrial growth in Ghana by using Industry value-added, and Wang & Wang (2019) validating the EKC of industrial agglomeration in China. Thus, the current study presents a new light on the EKC hypothesis – the average size of industrial firms, which is a completely new area of exploration to the best of our knowledge.

The finding from this study is also expected to fill in the gap lacking insights from microeconomic behavior in the literature of EKC (Kijima et al., 2010).

Another factor that might significantly affect the level of air pollution is the development of infrastructure. Infrastructure is the backbone of any country; with a well-planned design, the infrastructure expansion can contribute to sustainable development; otherwise, it will result in negative consequences on society and the environment (Thacker et al., 2019). On the one hand, the expansion of high-quality roads may result in an increase in traveling demand (Cervero, 2003). On the other hand, building more high-quality roads will help enhance manufacturing productivity through increasing accessibility (Duran-Fernandez and Santos, 2014; Gibbons et al., 2019). Moreover, expanding road infrastructure was believed to reduce air pollution by cutting down the time of vehicles on the road as well as frequent acceleration and deceleration due to traffic congestion (Zhang and Batterman, 2013). Therefore, we believe the expansion of high-quality road might have significant effects on air pollution emissions, especially in the case of a recycling-industrial city like the present one – Kitakyushu city, Japan.

Unlike previous studies testing the EKC without noticing when the first environmental regulation took place, our study only concentrates on the time period from 1967, when Kitakyushu city first signed a pollution prevention agreement with the private sectors (Holroyd, 2018), to 2015 (City of Kitakyushu, n.d.). In this way, we can evaluate the effectiveness of green growth policies and environmental legislation in Kitakyushu city. Moreover, the current study also tests the EKC by a new approach: examining the relationship of air pollution emissions (measured by the emissions per capita of falling dust particle, SO_x, NO₂, CO, and O_x) with the average industrial firm size total area of the paved road by employing ARDL and NARDL analyses.

Methods and Materials

Study site

This study selected Kitakyushu city as a study site for several reasons. First, Kitakyushu city is a green-growth oriented city through recycling activities, and its experiences can be generalized in other areas. Besides being featured as one of four green growth cities in the world besides Paris, Chicago, and Stockholm, Kitakyushu city was also selected as a pilot city for OECD's Territorial Approach to the Sustainable Development Goals project (City of Kitakyushu, 2018). Moreover, the city has received major national designations such as *Eco-Town* in 1997, *Eco-Model-City* in 2008, *Smart Community Project* in 2010, *Future City Initiative* in 2011, "*Green Asia*" *Comprehensive Special Zone* in 2011 (OECD, 2013), as well as other international recognitions (City of Kitakyushu, 2018). Thus, the results from this study could be viewed as a reference for other cities and regions within and outside of Japan, especially in the Global South, where many countries have close connections and collaboration with Japan, to achieve the Sustainable Development Goals.

Second, Kitakyushu city is an outstanding example of the impact of stringent environmental regulations and control on improving environmental quality. "The seven-colored smoke", which was created by dust and sulfur dioxide, was previously considered as a symbol of

prosperity, especially after Kitakyushu was selected as one of four key-driven areas including Tokyo, Nagoya, Osaka, and Kitakyushu, to form a “Pacific Belt Zone” in order to reconstruct the Japan economy after the wartime (Yoshioka and Kawasaki, 2016). However, because of the public pressure and political competition from the Communist party with its environmental-friendly agenda, local authority and private sector had to reach a general compromise by the first pollution control agreement in 1967 (Fujikura, 2007). The more “comprehensive, systematic, and steady” environmental control system in Kitakyushu after the agreement made it become introduced in the 1985 OECD’s White paper on the environment as an outstanding transformation from a “city of gray” to a “city of green” (The World Bank, 1996).

Data and variables

Our analysis examines the non-linear relationship between the average industrial firm size and air pollution, and linear relationship between the total area of paved road and air pollution in Kitakyushu city employing the dataset between 1967 and 2015. However, the data of some air pollutants had a shorter time span; for example, the concentration of NO₂ per capita only ranged from 1970 to 2015. The dataset consists of seven types of data, namely: the amount of falling dust particle, the concentration of SO_x, NO₂, O_x, and CO per capita, the average size of an industrial firm, and the total area of paved road.

Dependent variables

The data of air pollution were retrieved from Section 16: Hygiene, Environment, and Pollution in the Longitudinal Statistics database of the City of Kitakyushu (City of Kitakyushu, n.d.). The dataset included the amount of falling dust particles, the concentration of SO_x, NO₂, O_x, and CO. We later divided the air pollutants’ emission by the population in Kitakyushu to achieve the air pollutants’ emission per capita (see Figure 1.1 – 1.5). The population statistics were drawn from Section 2: Population (City of Kitakyushu, n.d.). The time period, measuring unit, and other details of each air pollutants’ emission per capita is displayed in Table 1. All dependent variables were later logarithm transformed to ensure the normality of the dependent variable, represented by adding “ln” in front of the variable. For example, “lnDustper” illustrates the logarithm of the amount of falling dust per capita.

Table 1: Dependent variables

Year	Air pollutants	Variable	Measuring unit	Description
1967 – 2015	Falling Dust Particles	<i>Dustper</i>	ton/km ² /month/person	The amount of falling dust particle per capita
1970 – 2015	Nitrogen dioxide	<i>NO2per</i>	ppm/person	The concentration of NO ₂ per capita
1971 – 2015	Photochemical Oxidant	<i>Oxper</i>	ppm/person	The concentration of O _x per capita
1975 – 2015	Carbon Monoxide	<i>COper</i>	ppm/person	The concentration of CO per capita
1967 – 1999	Sulfur Oxides	<i>SOxper</i>	mg/100 cm ² /day/person	The concentration of SO _x per capita

Independent variables

There are four independent variables in the current study. The first three independent variables are the logarithm of the average industrial firm size, its quadratic, and cubic forms. Those three independent variables are illustrated by “*lnFirmsize*”, “*lnFirmsize2*” and “*lnFirmsize3*” respectively. The average industrial firm size is calculated by dividing the total shipment value of manufactured goods of industrial firms by the number of industrial firms in Kitakyushu city. The data were taken from Section 5: Industry in the Longitudinal Statistics database (City of Kitakyushu, n.d.). The initial measuring unit of total shipment value was million JPY but was exchanged to million US dollars using the constant rate in May 2019 (1 US dollar = approximate 110 JPY).

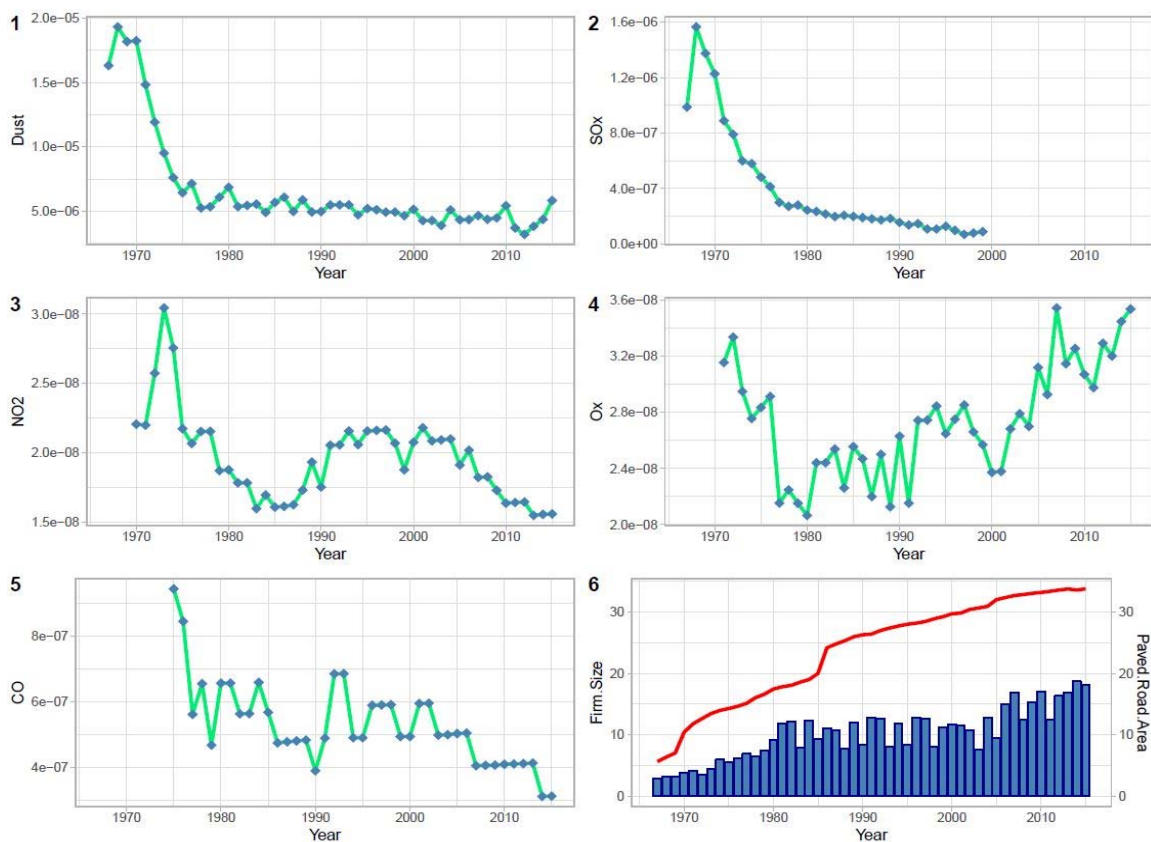


Figure 1: Air pollution, average industrial firm size, and total paved road area

- 1.1. The amount of falling dust per capita plotting from 1967 to 2015
- 1.2. The concentration of SO_x per capita plotting from 1967 to 1999
- 1.3. The concentration of NO_2 per capita plotting from 1970 to 2015
- 1.4. The concentration of O_x per capita plotting from 1971 to 2015
- 1.5. The concentration of CO per capita plotting from 1975 to 2015

1.6. The average industrial firm size (blue column) and the total area of paved road (red line) plotting from 1967 to 2015

Another independent variable is “*Road*”, which represents the total area of the paved road being built within the city area. The variable was later logarithm transformed and presented as “*lnRoad*”. The data were available from 1967 to 2015 in section 14: Construction and Housing (City of Kitakyushu, n.d.). The measuring unit of the total area of the paved road is km². The data of the average industrial firm size and total paved road area are presented by the blue column and red line, respectively, in Figure 1.6.

Models

In this study, the reduced-form function was chosen to test the shape of the relationship between air pollution and the average firm’s size, along with the impact of road density because of several reasons. First, the reduced-form function is more comfortable to apply than other non-linear functional forms or non-parametric and semi-parametric models. Second, some drawbacks of the parametric method cannot be solved by applying another type of methods, such as the use of spline or semiparametric methods (Özokcu and Özdemir, 2017). Third, the reduced-form has been widely used to test the EKC in various relationships between income and environmental degradation (Kijima et al., 2010).

We formulated our reduced-form function as linear, quadratic, and cubic equations according to previous works (Shafik and Bandyopadhyay, 1992; Grossman and Krueger, 1995; Panayotou, 1997; De Bruyn, 1997; Dinda, 2004; Galeotti and Lanza, 2005; Akbostancı et al., 2009; Özokcu and Özdemir, 2017) as follows respectively:

$$\ln AirPollution_t = \alpha_t + \beta_1 \ln FirmSize_t + \beta_2 \ln Road_t + \mu_t \quad (1.1)$$

$$\ln AirPollution_t = \alpha_t + \beta_1 \ln FirmSize_t + \beta_2 \ln FirmSize2_t + \beta_3 \ln Road_t + \mu_t \quad (1.2)$$

$$\ln AirPollution_t = \alpha_t + \beta_1 \ln FirmSize_t + \beta_2 \ln FirmSize2_t + \beta_3 \ln FirmSize3_t + \beta_4 \ln Road_t + \mu_t \quad (1.3)$$

It is notable that $\ln AirPollution_t$ represents all air pollutants emission per capita, which were log-transformed.

The statistical model utilized in our analysis was Auto-regressive Distributed Lag (ARDLs) created by Pesaran, Shin, & Smith (Pesaran et al., 2001) to examine the cointegration between a dependent variable and a set of independent variables for several reasons. First, the ARDL model has been widely used across disciplines for almost two decades to model relationships based on time-series analysis (Kripfganz and Schneider, 2016). Second, the ARDL encompasses other cointegration models (Engle and Granger, 1987; Johansen, 1988; Phillips and Hansen, 1990) in terms of feasibility: (1) ARDL is employable if the variables are stationary at

the level form, the first difference, or the mixture of both. Second, the ARDL model can provide unbiased results for a small sample size that has been verified by Monte Carlo simulations (Ahmad et al., 2017; Pesaran and Shin, 1999). Third, the ARDL model can fit well with endogenous variables, because it can solve the problem of endogeneity by selecting correct lag length for the variable and increasing the model dynamic (Pesaran and Shin, 1999). Lastly, the ARDL model provides not only an explanation for the long-run relationship but also look at the short-run dynamics through a simple linear function based on the Error Correction Mechanism (ECM).

Before conducting the ARDL analysis, Vector Auto-Regression (VAR) and Augmented Dickey-Fuller (ADF) tests are utilized. Through the VAR test, the optimal lag length was selected based on the three most widely employed criteria, namely Akaike Information Criterion (AIC), Schwarz Bayesian Information Criterion (BIC), and the Hannan-Quinn Information Criterion (HQIC) (Vrieze, 2012). The lowest lag number will be prioritized regardless of the criteria. The ADF test was used in this study to determine whether all variables are stationary at below I(2). Specifically, the level form and first difference of each dependent and independent variables were tested under two conditions, respectively: unrestricted intercept – no trend and unrestricted intercept – trend.

Equations (2.1) to (2.3) show the ARDL models of long-run and short-run relationships between air pollutants and independent variables, where α_0 is the constant, p is the length of lag and ε_t is the error term. In the first half of each model, the dynamics of the short-run is explained by variables with the summation signs. The second half of the model represents the long-run relationship.

$$\Delta \ln AirPollution_t = \alpha_0 + \sum_{i=1}^p \beta_{1i} \Delta \ln AirPollution_{t-1} + \sum_{i=0}^p \beta_{2i} \Delta \ln FirmSize_{t-i} + \sum_{i=0}^p \beta_{3i} \Delta \ln Road_{t-i} + \beta_4 \ln AirPollution_{t-1} + \beta_5 \ln FirmSize_{t-1} + \beta_6 \ln Road_{t-1} + \varepsilon_t \quad (2.1)$$

$$\Delta \ln AirPollution_t = \alpha_0 + \sum_{i=1}^p \beta_{1i} \Delta \ln AirPollution_{t-1} + \sum_{i=0}^p \beta_{2i} \Delta \ln FirmSize_{t-i} + \sum_{i=0}^p \beta_{3i} \Delta \ln FirmSize2_{t-i} + \sum_{i=0}^p \beta_{4i} \Delta \ln Road_{t-i} + \beta_5 \ln AirPollution_{t-1} + \beta_6 \ln FirmSize_{t-1} + \beta_7 \ln FirmSize2_{t-1} + \beta_8 \ln Road_{t-1} + \varepsilon_t \quad (2.2)$$

$$\Delta \ln AirPollution_t = \alpha_0 + \sum_{i=1}^p \beta_{1i} \Delta \ln AirPollution_{t-1} + \sum_{i=0}^p \beta_{2i} \Delta \ln FirmSize_{t-i} + \sum_{i=0}^p \beta_{3i} \Delta \ln FirmSize2_{t-i} + \sum_{i=0}^p \beta_{4i} \Delta \ln FirmSize3_{t-i} + \sum_{i=0}^p \beta_{5i} \Delta \ln Road_{t-i} + \beta_6 \ln AirPollution_{t-1} + \beta_7 \ln FirmSize_{t-1} + \beta_8 \ln FirmSize2_{t-1} + \beta_9 \ln FirmSize3_{t-1} + \beta_{10} \ln Road_{t-1} + \varepsilon_t \quad (2.3)$$

We tested the cointegration of dependent and independent variables by bound test. For example, in Equation (3.3), when the null hypothesis of the bound test is accepted, $\beta_1 = \beta_2 = \beta_3 = \beta_4 = \beta_5 = 0$, and there is no cointegration. On the other hand, if the null hypothesis is rejected, $\beta_1 \neq \beta_2 \neq \beta_3 \neq \beta_4 \neq \beta_5 \neq 0$, the cointegration exists. To determine whether to accept or reject the null hypothesis, the joint F-stat needs to be compared with the lower bound and upper bound of the model. The lower bound considers all variables as I(0), while the upper bound considers all

variables as I(1). The null hypothesis is accepted if the F stat is lower than the lower bound critical value of I(0), whereas if the F stat is higher than the upper bound critical value of I(1), the null hypothesis can be rejected. In case that the F stat is between the lower bound critical value of I(0) and the upper critical value of I(1), the result becomes inconclusive. In this situation, to decide whether the model is cointegrated or not, the significance of ECT in the short-term linear function needs to be taken into account. Banerjee et al. (1998) implied that if the coefficient of lagged dependent variable, or so-called ECT, is negative and statistically significant, the cointegration of the model is confirmed. Moreover, it is also notable that if the coefficient of ECT is not negative or statistically significant, there will be no cointegration, despite a significant bound test. Equations (3.1) to (3.3) represent the long-run ARDL equations of the relationship:

$$\ln AirPollution_t = \alpha_0 + \sum_{i=1}^p \beta_{1i} \ln AirPollution_{t-i} + \sum_{i=0}^q \beta_{2i} \ln FirmSize_{t-i} + \sum_{i=0}^u \beta_{3i} \ln Road_{t-i} + \varepsilon_t \quad (3.1)$$

$$\ln AirPollution_t = \alpha_0 + \sum_{i=1}^p \beta_{1i} \ln AirPollution_{t-i} + \sum_{i=0}^q \beta_{2i} \ln FirmSize_{t-i} + \sum_{i=0}^r \beta_{3i} \ln FirmSize2_{t-i} + \sum_{i=0}^u \beta_{4i} \ln Road_{t-i} + \varepsilon_t \quad (3.2)$$

$$\ln AirPollution_t = \alpha_0 + \sum_{i=1}^p \beta_{1i} \ln AirPollution_{t-i} + \sum_{i=0}^q \beta_{2i} \ln FirmSize_{t-i} + \sum_{i=0}^r \beta_{3i} \ln FirmSize2_{t-i} + \sum_{i=0}^s \beta_{4i} \ln FirmSize3_{t-i} + \sum_{i=0}^u \beta_{5i} \ln Road_{t-i} + \varepsilon_t \quad (3.3)$$

Where p , q , r , s , and u are lag values of each independent variable, respectively. The next following Equations (4.1) to (4.3) show the short-run dynamics of the relationship between air pollutants and independent variables:

$$\Delta \ln AirPollution_t = \delta_0 + \sum_{i=1}^p \delta_{1i} \Delta \ln AirPollution_{t-i} + \sum_{i=0}^q \delta_{2i} \Delta \ln FirmSize_{t-i} + \sum_{i=0}^u \delta_{3i} \Delta \ln Road_{t-i} + \gamma ECT_{t-i} + \tau_t \quad (4.1)$$

$$\Delta \ln AirPollution_t = \delta_0 + \sum_{i=1}^p \delta_{1i} \Delta \ln AirPollution_{t-i} + \sum_{i=0}^q \delta_{2i} \Delta \ln FirmSize_{t-i} + \sum_{i=0}^r \delta_{3i} \Delta \ln FirmSize2_{t-i} + \sum_{i=0}^u \delta_{4i} \Delta \ln Road_{t-i} + \gamma ECT_{t-i} + \tau_t \quad (4.2)$$

$$\Delta \ln AirPollution_t = \delta_0 + \sum_{i=1}^p \delta_{1i} \Delta \ln AirPollution_{t-i} + \sum_{i=0}^q \delta_{2i} \Delta \ln FirmSize_{t-i} + \sum_{i=0}^r \delta_{3i} \Delta \ln FirmSize2_{t-i} + \sum_{i=0}^s \delta_{4i} \Delta \ln FirmSize3_{t-i} + \sum_{i=0}^u \delta_{5i} \Delta \ln Road_{t-i} + \gamma ECT_{t-i} + \tau_t \quad (4.3)$$

Where δ_0 is the constant; δ_1 , δ_2 , δ_3 , δ_4 , δ_5 are coefficients; ECT_{t-i} is the error correction term of the EC models; γ is the coefficient of ECT; and τ is the error term. The error correction term (ECT) in these equations is the speed of the adjustment parameter reflecting the speed adjusting to the long-run equilibrium of the model.

Taking the asymmetric impact of paved road construction into consideration and gaining the inspiration from Mahmood et al. (Mahmood et al., 2019), the Nonlinear Autoregressive Distributed Lag (NARDL) is applied and compared with ARDL results. NARDL was developed from linear ARDL by Shin et al. (2014) to check the effect of positive and negative changes of an independent variable on the dependent variable separately. In this study, we test the

asymmetrical effect of $\ln Road$ on air pollution, by replacing “ $\ln Road$ ” with “ $\ln Road_p$ ” and “ $\ln Road_n$ ” in the ARDL models. “ $\ln Road_p$ ” and “ $\ln Road_n$ ” are computed by partial sums of positive and negative changes in “ $\ln Road$ ”, respectively, as follows:

$$\ln Road_{p_t} = \sum_{i=1}^t \Delta \ln Road_i^+ = \sum_{i=1}^t \max(\Delta \ln Road_i, 0) \quad (5.1)$$

$$\ln Road_{n_t} = \sum_{i=1}^t \Delta \ln Road_i^- = \sum_{i=1}^t \min(\Delta \ln Road_i, 0) \quad (5.2)$$

The following Equations (6.1), (6.2), and (6.3) are NARDL models, or ARDL models after being converted by replacing $\ln Road$ with Equations (5.1) and (5.2):

$$\Delta \ln AirPollution_t = \alpha_0 + \sum_{i=1}^p \beta_{1i} \Delta \ln AirPollution_{t-i} + \sum_{i=0}^p \beta_{2i} \Delta \ln FirmSize_{t-i} + \sum_{i=0}^p \beta_{3i} \Delta \ln Road_{p_{t-i}} + \sum_{i=0}^p \beta_{4i} \Delta \ln Road_{n_{t-i}} + \beta_5 \ln AirPollution_{t-1} + \beta_6 \ln FirmSize_{t-1} + \beta_7 \ln Road_{p_{t-1}} + \beta_8 \ln Road_{n_{t-1}} + \varepsilon_t \quad (6.1)$$

$$\Delta \ln AirPollution_t = \alpha_0 + \sum_{i=1}^{p_0} \beta_{1i} \Delta \ln AirPollution_{t-i} + \sum_{i=0}^p \beta_{2i} \Delta \ln FirmSize_{t-i} + \sum_{i=0}^p \beta_{3i} \Delta \ln FirmSize2_{t-i} + \sum_{i=0}^p \beta_{4i} \Delta \ln Road_{p_{t-i}} + \sum_{i=0}^p \beta_{5i} \Delta \ln Road_{n_{t-i}} + \beta_6 \ln AirPollution_{t-1} + \beta_7 \ln FirmSize_{t-1} + \beta_8 \ln FirmSize2_{t-1} + \beta_9 \ln Road_{p_{t-1}} + \beta_{10} \ln Road_{n_{t-1}} + \varepsilon_t \quad (6.2)$$

$$\Delta \ln AirPollution_t = \alpha_0 + \sum_{i=1}^p \beta_{1i} \Delta \ln AirPollution_{t-i} + \sum_{i=0}^p \beta_{2i} \Delta \ln FirmSize_{t-i} + \sum_{i=0}^p \beta_{3i} \Delta \ln FirmSize2_{t-i} + \sum_{i=0}^p \beta_{4i} \Delta \ln FirmSize3_{t-i} + \sum_{i=0}^p \beta_{5i} \Delta \ln Road_{p_{t-i}} + \sum_{i=0}^p \beta_{6i} \Delta \ln Road_{n_{t-i}} + \beta_7 \ln AirPollution_{t-1} + \beta_8 \ln FirmSize_{t-1} + \beta_9 \ln FirmSize2_{t-1} + \beta_{10} \ln FirmSize3_{t-1} + \beta_{11} \ln Road_{p_{t-1}} + \beta_{12} \ln Road_{n_{t-1}} + \varepsilon_t \quad (6.3)$$

The long-run and short-run of the NARDL models are examined by similar means to the ARDL model. In addition to that, we also employ the Wald test to examine the null hypotheses of the symmetrical effects of “ $\ln Road_p$ ” and “ $\ln Road_n$ ” in the long-run and short-run estimations.

Procedure

The current analysis was completed through three stages. In the first stage, pre-estimation tests, namely: lag-selection test, Augmented Dickey and Fuller unit-root test, and bound test for the cointegration of the model were conducted. In the second stage, the ARDL model was employed to examine the short-run and long-run relationships between air pollutants and the set of independent variables. Durbin-Watson test, Breusch Godfrey Serial Correlation Lagrange Multiplier (LM) test, Breusch-Pagan / Cook-Weisberg test for Heteroskedasticity, ARCH test, Ramsey Reset test, CUSUM and CUSUMSQR tests were employed at the end to confirm the autocorrelation, serial correlation, heteroscedasticity, appropriateness of model specification, and variables’ stability. If any model cannot pass the post-analysis tests, they would be rejected. Eventually, the finest models were selected for NARDL analysis to confirm the significance of the models. The NARDL analysis process was replicated from the ARDL analysis above.

The raw data from separate sources were initially downloaded, combined, and curated in one Excel file. The Excel file was later stored as CSV format before importing to EViews software (version 10) for in-depth analysis. In terms of the level of significance, 10% was chosen as the significance level for short-run and long-run analysis, while 5% was chosen as the significance level of the pre-estimation and post-estimation tests.

Results

Pre-estimation tests

The VAR test based on Akaike Information Criterion (AIC), Schwarz Bayesian Information Criterion (SBIC), and the Hannan-Quinn Information Criterion (HQIC) suggested 1 is the optimal lag length for most of the equations (see Table S1, Supplementary Information). The Augmented Dickey-Fuller unit root test was also employed to examine if all variables were stationary at level series or first-order difference series (see Table S2, Supplementary Information). The results concluded that all variables in the current study were stationary at I(0) and I(1).

EKC between industrial firm size and air pollution emissions

Based on the analysis statistics and post-estimation tests of both the ARDL and NARDL models, the two most appropriate shapes of the relationship between air pollution and average industrial firm size are the U-curve (“*lnDustper*” and “*lnO_xper*” as dependent variables) and inverted N-curve (“*lnNO₂*” and “*lnCOper*” as dependent variables). In cases of “*lnNO₂*” and “*lnCOper*”, the EKC hypothesis is validated as air pollution emissions eventually decline according to industrial growth, despite an increasing period. However, as “*lnDustper*” and “*lnO_xper*” rise after a certain level of industrial growth, the EKC hypothesis is rejected.

ARDL analysis results

Among the three equations of “*lnDustper*” and “*lnO_xper*”, equation (3.2) is the most appropriate representation for the relationship of “*lnDustper*” and “*lnO_xper*” with the average industrial firm size and the total area of paved road, because the equation satisfies all the post-estimation tests. The models of “*lnDustper*” and “*lnO_xper*” explain 92% and 68% of the variance, respectively. In the long-run, the coefficients of “*lnFirmsize*” ($\beta_{\ln Firmsize} = -0.246$, p -value < 0.01) and “*lnFirmsize2*” ($\beta_{\ln Firmsize2} = 0.530$, p -value < 0.01) are negative and positive respectively, which presents a U-shaped relationship between industrial firm size and the amount of falling dust per capita. The turning point is calculated to be at \$10.21 million per firm after exponential transformation (see Figure 2.1). Meanwhile, the relationship between the concentration of O_x per capita and the average firm size also exhibits a similar shape, with the turning point at \$10.05 million per firm ($\beta_{\ln Firmsize} = -2.686$, p -value < 0.01 and $\beta_{\ln Firmsize2} = 0.582$, p -value < 0.01 , see Figure 2.2).

The U-shaped relationships between industrial firm size and the amount of falling dust per capita, as well as the concentration of O_x per capita, imply that air pollutions are initially alleviated, but they start to increase again when industrial firms grow up to a certain size. In other words, the EKC of industrial growth is not valid in cases of falling dust and O_x. This result

contradicts the study of Diao et al. (2009), which validates the EKC between economic growth and industrial dust discharged during the 1995-2005 period.

The results in the short-run estimation also demonstrate a similar effect of industrial firm size on the amount of falling dust and concentration of O_x per capita like the long-run estimation (see Table 3). The coefficients of the error correction terms are negative and statistically significant, which again confirmed the cointegration of both models. The amount of falling dust and concentration of O_x per capita adjusts by 65.2% and 70.4% each year, respectively, when they are far away from the equilibrium.

The current study also displays long-run inverted N-shaped relationships of the average industrial firm size with the concentration of NO_2 ($\beta_{\ln FirmSize} = -14.742$, p -value < 0.05 , $\beta_{\ln FirmSize2} = 6.629$, p -value < 0.05 , and $\beta_{\ln FirmSize3} = -1.005$, p -value < 0.01) and CO per capita ($\beta_{\ln FirmSize} = -67.831$, p -value < 0.01 , $\beta_{\ln FirmSize2} = 29.688$, p -value < 0.01 , and $\beta_{FirmSize3} = -4.287$, p -value < 0.01). We choose the results estimated for Equation (3.3), because it does not only satisfy all the post-estimation tests but also explain the most variance ($R^2 = 0.86$ and 0.70 with “ $\ln NO_{2per}$ ” and “ $\ln CO_{per}$ ” as dependent variables, respectively). Even though the finding shows an inverted N-shaped curve between NO_2 emission per capita and firm size, there is only one turning point at \$9 million per firm, which is the third fundamental cubic equation’s reflection point (see Figure 2.3). Meanwhile, the relationship between CO emission per capita and firm size obtains two turning points, which are at \$7.96 million and \$12.71 million, respectively (see Figure 2.4). The two curves indicate a similar pattern that air emission first declines as firms grow, then starts to slow down or even rises when firms grow to a certain level, but finally declines again.

The inverted N-shaped curves plotted between firm size and the concentrations of NO_2 and CO per capita in our study provide insights from the perspective of the microeconomic industrial growth on the validity of EKC in Japan (Rafindadi, 2016). They also contribute evidence for the EKC of industrial growth, in terms of average industrial firm size and NO_2 and CO emissions, besides the U-shaped relationship between environmental efficiency and industrial agglomeration in China (Wang and Wang, 2019) and the inverted U-shaped relationship between industrial added value and CO2 emission in Ghana (Abokyi et al., 2019).

The short-run estimations also confirm the N-shaped relationship of the average industrial firm size with the concentration of NO_2 and CO per capita in the long-run estimations (see Table 3). The adjustment speed to the equilibrium of NO_2 per capita ($\beta_{ECT(t-1)} = -0.416$, p -value < 0.01) is slower than that of CO per capita ($\beta_{ECT(t-1)} = -0.703$, p -value < 0.01).

DVs	<i>lnDustper</i>			<i>lnNO2per</i>			<i>lnOxper</i>			<i>lnCOper</i>			<i>lnSOxper</i>		
Equation	(3.1)	(3.2)	(3.3)	(3.1)	(3.2)	(3.3)	(3.1)	(3.2)	(3.3)	(3.1)	(3.2)	(3.3)	(3.1)	(3.2)	(3.3)
Lags	1,0,1	1,0,0,1	1,0,0,0,1	1,1,0	1,1,0,0	1,1,1,1,1	2,1,0	1,0,0,0	1,0,0,0,0	1,0,0	1,0,0,0	1,0,1,1,0	3,0,1	3,0,0,3	3,2,3,3,2
<i>lnFirmsize</i>	0.813	-2.462***	-3.810	-0.692***	-1.343*	-14.742**	0.477	-2.686***	1.457	-0.167	4.564*	-67.831***	0.963	8.191	451.713
<i>lnFirmsize2</i>		0.530***	1.204		0.147	6.629**		0.582***	-1.408		-0.986**	29.688***		-1.534	-244.515
<i>lnFirmsize3</i>			-0.108			-1.005***			0.309			-4.287***			42.473
<i>lnRoad</i>	-0.010**	-0.361**	-0.354	0.496***	0.511***	0.341**	0.166	0.347***	0.348***	-0.345	-0.404*	-0.357*	-0.976	-1.232	-1.214
Constant	-4.484*	-5.389***	-4.947***	-6.850***	-6.426***	-3.230***	-4.127***	-10.927***	-13.770	-7.172***	-10.813***	26.604**	-2.237**	-3.461**	31.938***
a)	A	A	A	A	A	A	A	A	A	A	A	A	A	A	R
b)	A	A	A	A	A	A	A	A	A	A	A	A	A	A	A
c)	A	A	R	A	A	A	A	A	A	A	A	A	A	A	A
d)	A	A	A	A	A	A	A	A	A	A	R	A	R	A	R
e)	A	A	A	A	A	A	R	A	A	R	A	A	A	A	A
f)	A	A	A	A	A	A	A	A	A	A	A	A	A	A	A

Note:

- *, ** and *** represent statistical significance at 10%, 5% and 1% respectively
- “A” represents the null hypothesis is accepted, while “R” represents the null hypothesis is rejected
 - Breusch Godfrey serial Correlation LM test
 - Breusch-Pagan / Cook-Weisberg test for Heteroskedasticity
 - ARCH test
 - Ramsey Reset test
 - CUSUM
 - CUSUMSQR

Table 2: Long-run estimates of the ARDL models

DVs	$\Delta \ln Dust_{per}$			$\Delta \ln NO_{2per}$			$\Delta \ln O_{xper}$			$\Delta \ln CO_{per}$			$\Delta \ln SO_{xper}$		
Equation	(4.1)	(4.2)	(4.3)	(4.1)	(4.2)	(4.3)	(4.1)	(4.2)	(4.3)	(4.1)	(4.2)	(4.3)	(4.1)	(4.2)	(4.3)
Lags	1,0,1	1,0,0,1	1,0,0,0,1	1,1,0	1,1,0,0	1,1,1,1,1	2,1,0	1,0,0,0	1,0,0,0,0	1,0,0	1,0,0,0	1,0,1,1,0	3,0,1	3,0,0,3	3,2,3,3,2
$\Delta \ln Firmsize$	0.053	-1.606***	-2.540	-0.085*	-0.332	-2.960*	-0.021	-1.891***	1.096	-0.092	2.685**	-47.715***	0.135	1.190	-20.709***
$\Delta \ln Firmsize_2$		0.346***	0.803		0.055	1.443*		0.409***	-1.060		-0.580**	20.883***		-0.223	11.828***
$\Delta \ln Firmsize_3$			-0.072			-0.230*			0.232			-2.867***			-2.127***
$\Delta \ln Road$	-0.265**	-0.236**	0.236**	0.191***	0.192***	0.142**	0.036	0.244***	0.262***	-0.190	-0.237*	-0.251*	1.148*	1.445**	0.590
$ECT (t-1)$	-0.187*	-0.652***	-0.666***	-0.385***	-0.375***	-0.416***	-0.216*	-0.704***	-0.752***	-0.552***	-0.588***	-0.703***	-0.140	-0.145	0.116
DW stat.	1.88	1.90	1.94	1.97	2.00	2.19	1.96	2.28	2.15	1.88	2.16	1.87	2.14	2.21	2.77
R ²	0.89	0.92	0.92	0.82	0.82	0.86	0.69	0.68	0.70	0.54	0.60	0.70	0.97	0.98	0.99
Adj R ²	0.89	0.91	0.91	0.80	0.80	0.83	0.65	0.65	0.66	0.50	0.56	0.64	0.97	0.97	0.99
Bound test	NC (6.36)	C (10.07)	C (7.94)	I (3.88)	C (5.17)	C (6.94)	I (3.83)	C (7.79)	C (6.96)	I (4.19)	C (4.92)	C (7.11)	C (4.98)	I (2.93)	C (11.95)
<p>Note:</p> <ul style="list-style-type: none"> *, ** and *** represent statistical significance at 10%, 5% and 1% respectively Bound test: "C" = Cointegration, "I" = Inconclusive, "NC" = No Cointegration, the F-stats is shown in parentheses (see Table C for upper and lower bound critical values) 															

Table 3: Short-run estimates of the ARDL models

NARDL analysis results

The most appropriate ARDL models of each type of air pollution are selected for the NARDL analysis, while the model with “lnSO_{xper}” is rejected due to statistical insignificance. CUSUM and CUSMSQ tests are not reported due to collinearity while computing. Among the four selected models, two are in the quadratic form (“lnDustper” and “lnO_{xper}” as dependent variables), and the other two are in the cubic form (“lnNO_{2per}” and “lnCOper” as dependent variables).

Table 4: Long-run and short-run estimates of Non-linear ARDL models

Long-term	lnDustper	lnNO _{2per}	lnO _{xper}	lnCOper
Equation	(6.2)	(6.3)	(6.2)	(6.3)
Lags	1,0,0,1,1	1,1,1,1,1,0	1,0,0,0,0	1,0,1,1,0,0
lnFirmsize	-2.051***	-20.064**	-2.592***	-74.358**
lnFirmsize2	0.429***	9.301**	0.558***	32.566**
lnFirmsize3		-1.441**		-4.707**
lnRoad_p	-0.337**	0.353**	0.347***	-0.352*
lnRoad_n	-82.645*	-55.786	-10.131	-19.616
Constant	-5.811***	-1.446	-10.581***	29.462*
Wald test	2.848 (0.099)	2.503 (0.122)	0.211 (0.648)	0.164 (0.687)
Short-term	ΔlnDustper	ΔlnNO _{2per}	ΔlnO _{xper}	ΔlnCOper
ΔlnFirmsize	-1.276**	-7.761***	-1.828***	-52.058**
ΔlnFirmsize2	0.267**	3.598***	0.393***	22.800**
ΔlnFirmsize3		-0.557***		-3.295***
ΔlnRoad_p	-0.210**	0.136**	0.245***	-0.247*
ΔlnRoad_n	-51.451*	-21.580	-7.144	-13.733
ECT (t-1)	-0.622***	-0.386***	-0.705***	-0.700***
Wald test	3.755 (0.059)	2.419 (0.129)	0.222 (0.639)	0.167 (0.685)
DW stat.	2.09	2.36	2.25	1.91
R ²	0.91	0.87	0.69	0.71
Adj R ²	0.90	0.83	0.64	0.63
Bound test	C (8.35)	C (6.40)	C (6.15)	C (5.80)
a)	A	A	A	A
b)	A	A	A	A
c)	R	A	A	A
d)	A	A	A	A
Note:				
<ul style="list-style-type: none"> • *, ** and *** represent statistical significance at 10%, 5% and 1% respectively • “A” represents the null hypothesis is accepted, while “R” represents the null hypothesis is rejected 				
a) Breusch Godfrey serial Correlation LM test				
b) Breusch-Pagan / Cook-Weisberg test for Heteroskedasticity				
c) ARCH test				
d) Ramsey Reset test				

At first glance, the inverted N-shaped relationships of “lnNO₂” and “lnCOper” with the average size of industrial firm in Kitakyushu city are confirmed by the NARDL models, but the

turning points are slightly different from those provided by ARDL models (see Figure 2). The turning point of NARDL model of “lnNO_{2per}” is at \$8.6 ($\beta_{\ln Firm\ size} = -20.064$, p -value < 0.05, $\beta_{\ln Firm\ size^2} = 9.301$, p -value < 0.05, and $\beta_{\ln Firm\ size^3} = -1.441$, p -value < 0.05), while that of “lnCO_{per}” are at \$7.97 million and \$12.62 million ($\beta_{\ln Firm\ size} = -74.358$, p -value < 0.05, $\beta_{\ln Firm\ size^2} = 32.566$, p -value < 0.05, and $\beta_{Firm\ size^3} = -4.707$, p -value < 0.05).

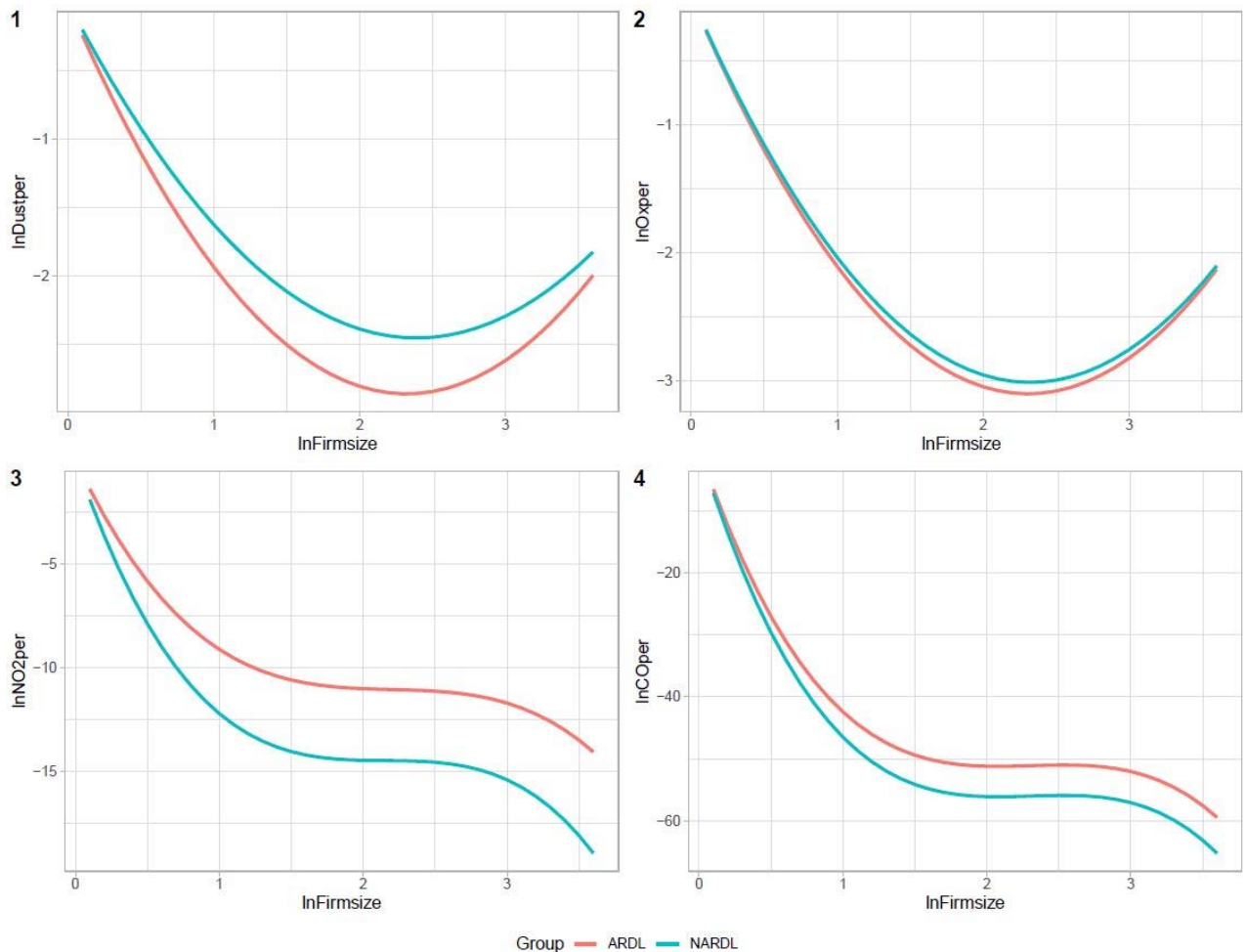


Figure 2: Illustrations of the relationship between the average industrial firm size and air pollutions

- 2.1. The U-shaped relationship between average industrial firm size and the amount of falling dust
- 2.2. The U-shaped relationship between average industrial firm size and the concentration of O_x
- 2.3. The inverted N-shaped relationship between average industrial firm size and the concentration of NO₂
- 2.4. The inverted N-shaped relationship between average industrial firm size and the concentration of CO

In the case of “ $\ln Dust_{per}$ ” and “ $\ln O_x_{per}$ ”, the NARDL models presented U-shaped relationships between air pollution emissions and industrial firm size, but the model of “ $\ln Dust_{per}$ ” had an autoregressive conditional heteroskedasticity. The turning points calculated from the NARDL models of “ $\ln Dust_{per}$ ” and “ $\ln O_x_{per}$ ” are \$10.91 million and \$9.32 million. The U-shaped relationship might be the result of insufficient pollution monitoring policies due to the changing industrial structure in Kitakyushu city might be an explanation for the increasing dust emission as firms grow larger. To elaborate, it is reported that there is a rising number of large firms in iron steel, chemical, and automobile sectors, etc. have outsourced their activities to smaller firms receiving many incentives and less stringent regulatory restrictions and inspection from the government (OECD, 2013).

In terms of O_x emission, even though it is closely related to the concentration of NO_2 in the atmosphere, it is still very difficult to control as O_x emission is created through a complex photochemical reaction of NO_2 with other substances in the air (Guderian, 1985).

Relationships between road infrastructure development and air pollution emissions

Our ARDL analysis finds that building more high-quality roads, in particular – paved road corresponds to the decline of dust emission ($\beta_{\ln Road} = -0.361$, p -value < 0.05), CO emission ($\beta_{\ln Road} = -0.357$, p -value < 0.1), and the increase of the NO_2 ($\beta_{\ln Road} = 0.341$, p -value < 0.05), O_x emissions ($\beta_{\ln Road} = 0.347$, p -value < 0.01). The results of NARDL analysis also confirm the relationships between road infrastructure development and air pollution emissions. However, in all NARDL models, while the effect of increasing the total area of paved road is significant, that of decreasing one is not. The null hypothesis of the symmetrical effect of road infrastructure development is tested and not rejected, which implies the symmetrical effect of road infrastructure development. The contradictory result between the Wald test and the coefficients of “ $\ln Road_p$ ” and “ $\ln Road_n$ ” can be because the total area of the paved road only declined in one year, which was in 2014, which in turns, created distortion in the results. Even though the distortion does not lead to any major difference between the results of ARDL and NARDL analyses, we would like to use the results of ARDL, instead of NARDL analysis, for discussion.

Given that Equation (3.2) is the most suitable equation among the ARDL models, a 10% increase in the total area of the paved road corresponds with 3.38% and 3.35% decreases in the amount of falling dust per capita and the concentration of CO per capita respectively. The short-run estimations also confirmed the negative associations in the long-run. The negative correlation of paved road infrastructure development with dust and CO emissions suggest a substantial role of high-quality road expansion in elevating the productivity through accessibility improvement (Duran-Fernandez and Santos, 2014; Gibbons et al., 2019). Especially in Kitakyushu city, recycling industries are extensively and intensively invested and promoted (City of Kitakyushu, 2018). As a result, local recycling industries might take advantage of the road infrastructure system to raise recycling productivity and indirectly alleviate the CO and dust emissions.

However, building more high-quality road infrastructure also leads to some side-effects. Contrary to the negative correlations of the total area of paved road with dust and CO emissions per capita, NO_2 ($\beta_{\ln\text{Road}} = 0.341$, $p\text{-value} < 0.05$) and O_x ($\beta_{\ln\text{Road}} = 0.348$, $p\text{-value} < 0.01$) emissions per capita are positively associated with the expansion of paved road. The short-run estimations also presented similar patterns in the long-run. The concentration of NO_2 and O_x per capita might increase by 3.3% and 3.37%, respectively, if there was 10% of the additional road being built. Although the road infrastructure development in Kitakyushu city might help reduce dust and CO emissions through rising industrial productivity, the construction of new road might lead to urban sprawl and the increasing car dependency due to the rising traveling demand (Cervero, 2003; OECD, 2013). Therefore, policy-makers should concern both the favorable and adverse effects of new road construction for implementing better green growth policies and planning.

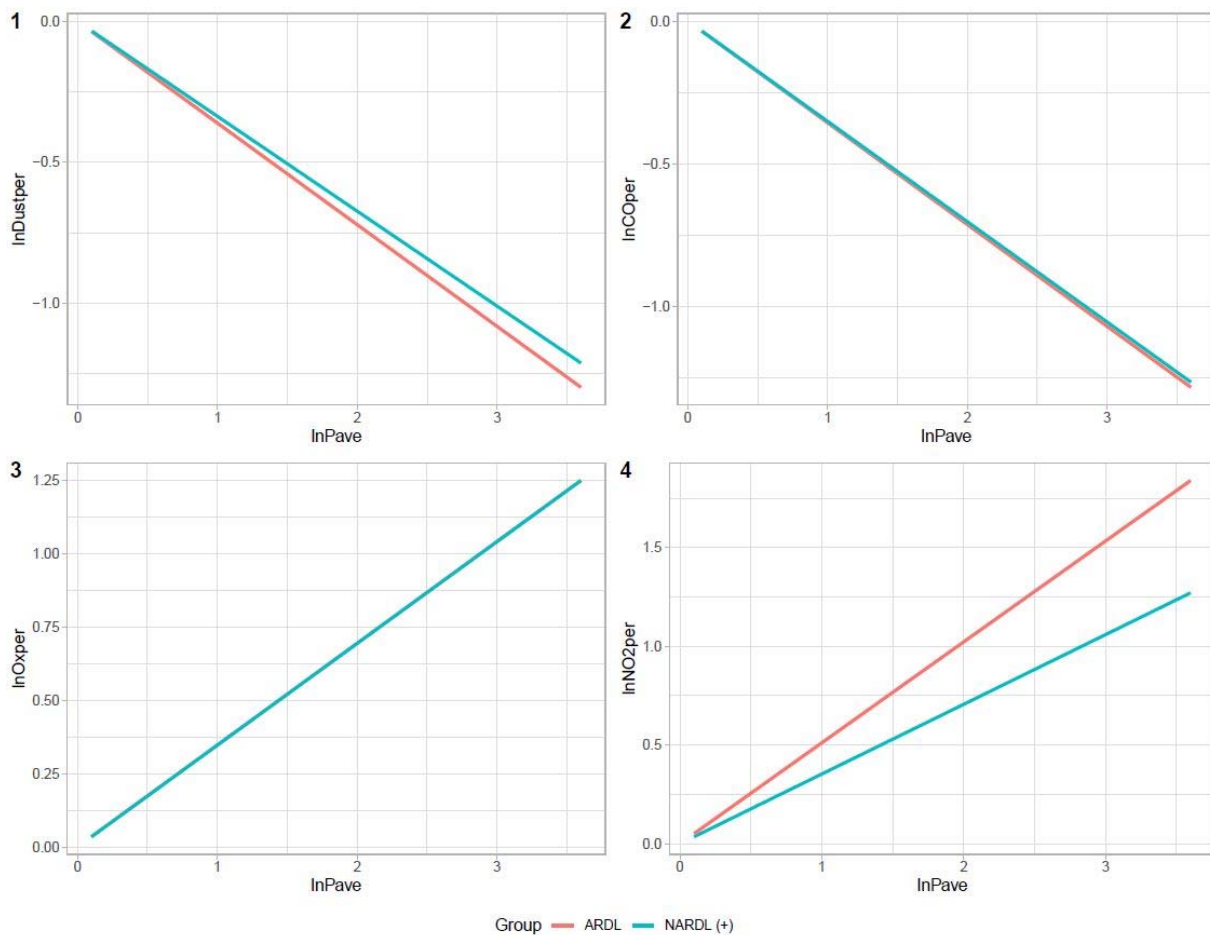


Figure 3: Illustrations of the relationship between the total area of paved road and air pollutions

- 3.1. The relationship between the total area of paved road and the amount of falling dust
- 3.2. The relationship between the total area of paved road and the concentration of CO
- 3.3. The relationship between the total area of paved road and the concentration of O_x

Discussion and Conclusion

The trilemma of sustainable development

Through an analysis of almost 50 years of historical data, using both the ADRL and non-linear ADRL methods, this study has presented a trilemma among industrial growth, infrastructure development, and the emission reduction of air pollution and greenhouse gas.

The EKC of industrial growth

The current study is among the first to explain the EKC between industrial development and air pollution using the aggregate microeconomic data – the average industrial firm size calculated by the division of the total shipment value by the total number of firms in the city. From the aggregate microeconomic approach, this study validates the EKC hypothesis in terms of NO₂ and CO emissions per capita but rejects the EKC hypothesis in terms of falling dust particle and O_x emissions per capita.

The initial decrease of air pollution in relation to the industrial growth after 1967 provides evidence for the effectiveness of the pollution prevention agreement between Kitakyushu government and the private sector in alleviating air pollution. This viewpoint is also supported by the fact that, from 1963, the municipal government had faced tremendous pressure from the local community due to poor environmental quality because of industrial development (Fujikura, 2007).

In this study, the existing inverted N-shaped relationships of NO₂ and CO emissions with the industrial firm size hint at the vital contribution of large industrial enterprises to pollution reduction, as NO₂ and CO are primarily the waste products of combustion of fuel for power generation and manufacturing. This result can be explained by previous studies, which have found large industrial firms to be more capable of replacing old, polluted, and energy-inefficient machines with better ones than small and mid-size firms (Andreoni and Levinson, 2001; Merlevede et al., 2006; Nielsen, 2018). Gaining the advantage of economies of scale over smaller firms, large firms are also able to consume fewer units of energy to produce a unit of output (Machado et al., 2016; Oh and Lee, 2016; Park et al., 2016). Also, the energy sources in Kitakyushu city has been gradually shifted from coal and oil to natural gas and renewable energy since 1967, which leads to lower emissions of greenhouse gases and NO₂ (De Gouw et al., 2014; Higazy et al., 2019; OECD, 2013). With 66% of energy in Kitakyushu city is consumed by industrial activities and energy conversion is more affordable to larger industrial firms, the emissions of NO₂ and CO might be reduced as industrial firms grow. It has been reported that despite accounting for the largest proportion of energy consumption in Kitakyushu city, the industrial sector keeps growing while air emissions from energy generation are still under control (OECD, 2013). As such, the evidence points toward the EKC of NO₂ and CO emissions are the result of (1) stringent pollution monitoring, controls and financial support of local government,

(2) replacement of energy-efficient technologies, (3) economies of scale effects, and (4) the energy source conversion from coal and oil to natural gas and renewable sources.

However, our analysis also shows that the amount of falling dust particle and O_x , after the initial decline, starts to rise when the industrial sector expands to a level of \$9.32 million to \$10.91 million of shipment value per firm depends on the model of analysis. In 2013, the OECD report warned that where a rising number of large firms in iron steel, chemical, and automobile sectors, etc. are reported to outsource their activities to smaller firms to whom enforcement and inspection are more difficult to apply. This could essentially explain the analysis result. Hence, policy-makers in Kitakyushu city are suggested to revise inspection regulations with regards to small and medium firms to stay abreast of the changing dynamics of the industry.

The problems with infrastructure development

Besides the significant relationship between firm-level industrial growth and air pollution, we also found both negative and positive correlations of road infrastructure development with air pollution. On the one hand, our analysis shows a positive effect of road construction on alleviating the amount of falling dust and CO concentration. These findings can be explained by the fact that as the higher quality road is built, the manufacturing and recycling productivity and efficiency are elevated (Duran-Fernandez and Santos, 2014; Gibbons et al., 2019), which, in turns, leads to air emission reduction.

On the other hand, the emissions of NO_2 and O_x are found to increase according to road infrastructure development. This finding points out the adverse effect of the policies facilitating industrial recycling growth in Kitakyushu city. Initially, the eco-industrial park in Kitakyushu city was planned to achieve industrial symbiosis, a closed system where the waste of an industry or a firm is fully consumed by others within the system. However, due to the demand for the revitalization of the local economy, the eco-industrial park in Kitakyushu city has been turned into a hot spot of the recycling industry, which was hoped to generate more economic profit as well as reduce environmental degradation (Ogihara, 2007). To attract investment to the recycling industry, the Kitakyushu government offers cheap and vast land located away from the residential area (Hammer et al., 2011), while more road has been built to ensure the connectivity of industrial recycling firms with other industries and residential areas. In addition, to keep the growth rate of recycling industries, the road infrastructure needs expanding to make recycling materials and outputs flow among regions within and outside of Kitakyushu city. During the period from 2005 to 2010, the total amount of waste inputs from outside Kitakyushu city tripled, while the total amount of recycling outputs transported to locations within the eco-town, Kitakyushu city, and Fukuoka prefecture increased substantially (Tsuruta et al., 2016). Air pollution from transportation might rise dramatically due to recycling industrial activities, not to mention the increase in the number of personal vehicles because of increasing traveling demand (Cervero, 2003) and urban sprawl (OECD, 2013) when more roads are built.

Even in a stringent green growth regulation context, like Kitakyushu city, some air pollution emissions still eventually increase according to industrial growth and infrastructure expansion. This, as a result, creates a trilemma among industrial growth, infrastructure development, and air and greenhouse gas emission reduction. Indeed, dealing with climate change and air pollution while fostering industrial growth and road infrastructure development is a complicated business, which requires the involvement of multi-stakeholders, not only the government, the private sector, and academia, but also the local community. We recommend policy-makers in Kitakyushu city, promoting the usage of public transport instead of personal vehicles within the local community by raising awareness of air pollution and climate change.

Kitakyushu as a reference point of Green Growth for the Global South?

Japan has put significant efforts into finding a balance between the “industrial” and “green” parts of growth. Since the end of the 1990s, the Japanese government has considered the improvement of energy efficiency and energy innovations as the heart of a mission to achieve growth which was later upgraded into green growth (Government of Japan, 2007, 2010, 2014; Ministry of Economy, Trade and Industry, 1999). Many policies and strategies have been planned and implemented until currently, such as the Top Runner Program, Japan’s Strategy for a Sustainable Society, New Growth Strategy, Strategic Energy Plan, all of which consistently concentrate on fostering economic growth sustainably by creative innovations and the development of energy-related technologies (Government of Japan, 2007, 2010, 2014; Ministry of Economy, Trade and Industry, 1999). In the case of Kitakyushu city, the combination of political orientation, technological development, and economic incentives have resulted in two diverging patterns: the success with the general decline of NO₂ and CO emissions when plotted against industrial growth, the worrying increase of dust particles and O_x after an early decline. There are limitations to the pioneering efforts of the local and national governments in pursuing green growth.

Thus, the Kitakyushu city case can act as an important reference point for the pursuit of green growth in Japan as well as the Global South. Green growth orientation development has become more visible recently in many Global South countries, such as India and China (Death, 2015). One can argue if developing countries in the Global South manage to successfully implement green growth policies, the world can enjoy a much more sustainable future. To date, however, the effectiveness of the existing green growth practices in these developing countries has not been properly assessed (Li and Qiu, 2015). Hence, the lessons offered by Kitakyushu can be taken into account when policies are formed, and progress is measured in the course of pursuing a green economy. The next parts will offer some of the suggestions from our results and the review of the literature.

In terms of CO emission, which is closely correlated with CO₂ emission, this study found notable results that CO emission eventually declines when plotting against industrial development and road infrastructure expansion. This success partly thanks to the implementation of eco-town project – recycling industries, which have been shown in previous studies,

significantly reduce the CO and CO₂ emissions from the manufacturing process (Gielen and Moriguchi, 2002; Johnson et al., 2008; Zheng and Suh, 2019). As a result, three aspects of Kitakyushu's eco-town project can be recommended. First, to achieve green growth development, collaboration across and within levels of government is required (Hammer et al., 2011). It is important for national and local governments to play a complementary role to each other. For Kitakyushu city's eco-town project, while the national government provides legislative and financial support to the local government, the local government is responsible for collaborating with the private sector, providing the necessary support, and enforcing environmental regulations.

Second, technology innovations and green technology applications are the leverages of green growth in Kitakyushu. To enhance technology innovations and effectively apply green technology in the industrial sector, not only investment into green R&D and financial subsidy, but the cooperation among three stakeholders – government, private sector, and academia, need to be promoted (City of Kitakyushu, 2018). Through mutual corporation, the research outcome can be applied in a practical context, and economic subsidies are given to multiply the effect of new technologies.

Third, the transparency green growth agenda in regional policies can also be one of the main contributors to the success in the alleviation of CO and CO₂ emissions in Kitakyushu city. Usually, the national green growth agenda is driven by sectoral ministries rather than people in charge of regional and spatial planning (Hammer et al., 2011). Nonetheless, Kitakyushu city has not only integrated the green growth agenda of Japan focusing on GHG emission reduction while maintaining the economic development (Government of Japan, 2010; Ministry of the Environment, 2016), but even set its own agenda reducing at least 50% of greenhouse gas emissions by 2050, while increase economic growth up to 40% by 2050 (OECD, 2013).

Moreover, other cities in the Global South can indeed learn from the trilemma of Kitakyushu in pursuing industrial growth, infrastructure development, and emission reduction of air pollution and greenhouse gas. It appears that this problem can be traced back to the strategic turn toward a focus on recycling activities rather than industrial symbiosis, as well as, the trend of outsourcing to small and medium firm whom regulation is more difficult to enforce. Future studies that focus on the causes of this complex relationship and how to solve it will bring further insights. Nevertheless, the current lessons from the pioneering efforts of Kitakyushu will be helpful in the policy-planning for green growth in other cities.

[Data policy and Society 5.0 for the green growth future](#)

This section will discuss the current data policy in Kitakyushu city, which is currently an OECD SDGs pilot city and the leading Asian green-growth city that might be the role model for other cities in the Global South. Apart from the openness of data, there are still several deficiencies in data management and stewardship in Kitakyushu city. First, judging by FAIR principles of data stewardship proposed by Wilkinson et al. (2016), the language barrier is one of the main problems hindering the findability and the interoperability of data. Currently, the data deposit on

the Kitakyushu website is only available in Japanese. To advance more and better science as well as to play a role model for other cities in green growth development, Kitakyushu city is recommended to have its data related to green growth development available in other common languages in the Global South. Open and well-structured databases not only enable scientific exploration but also enable the involvement of the general public in this process, thus, increasing public trust (Vuong et al., 2018).

The data collection needs to be more detailed and specific to deal with the complex connections among emissions, concentrations, climate change, and impacts (National Research Council, 2011). For instance, with a more detailed and specific data on types of industrial firms, the results from this study could have explained more clearly the main sources of air pollution and greenhouse gas emissions. To acquire such detailed information from multiple sectors and sources, we suggest the local government to invest in the application of big data in Kitakyushu city, which will offer new insights and addresses specific problems for innovating scientific research as well as facilitating evidence-based policymaking (McNeely and Hahm, 2014; Michael and Miller, 2013; Vuong, 2018; Vuong, 2019).

Society 5.0, proposed in the 5th Science and Technology Basic Plan, aims to incorporate new technologies, such as IoT, big data, artificial intelligence (AI), for achieving economic development and solutions to social-environmental problems concurrently (Cabinet Office, 2019). As the Japanese government is nurturing the ambition of Society 5.0, Kitakyushu city can take this opportunity to revise its data policy employing big data for better green growth development. The complex interaction among industrial growth, road construction, and air pollution highlighted in this study might be a befitting case for the application of big data and artificial intelligence to solve urban problems (Duarte and Alvarez, 2019).

Methodology for future research

When employing the linear and non-linear ARDL analyses in this study, we found one shortfall of the non-linear ARDL model. The non-linear ARDL model seems to not work well with data, which tends to be cumulative, for instance, the total area of paved road. In fact, the total area of paved road in Kitakyushu accumulates over time and only decline in 2014, which creates outlier in the variable “*lnRoad_n*”, and eventually leads to inaccurate estimation of the asymmetric effect and the relationship between “*lnRoad_n*” and “*lnAirPollution*”. Thus, later studies should be aware of the properties of a variable before using non-linear ARDL analysis.

Future studies examining the EKC should employ not only the augmented model by squared and cubic variables but also the new approach of Narayan & Narayan (2010), comparing the long-run and short-run coefficients of economic indicators, for comparison. Comparing the results from the two methods will help verify the robustness of the current findings as well as cover some shortcomings of both methods; for example, the econometric weakness of the augmented approach and incapability to find a turning point of Narayan & Narayan’s approach.

Competing Interests

The authors declare no competing interests.

Acknowledgments

We thank Prof. Sudo Tomonori and Prof. Li Yan (Ritsumeikan Asia Pacific University) for their helpful advice and comments during the course of this research. We would also like to express our gratitude to the International Environmental Strategies Division of Kitakyushu city for providing the necessary information.

Data Availability

The datasets analyzed in this study are available in the Harvard Dataverse repository: <https://doi.org/10.7910/DVN/4BEQ0X>. These datasets were derived from the following public domains:

- https://www.city.kitakyushu.lg.jp/soumu/file_0348.html;
- https://www.city.kitakyushu.lg.jp/soumu/file_0351.html;
- https://www.city.kitakyushu.lg.jp/soumu/file_0306.html;
- https://www.city.kitakyushu.lg.jp/soumu/file_0308.html.

Supplementary Information

The supplementary information is available in the Dataverse repository with data: <https://doi.org/10.7910/DVN/4BEQ0X>

References

- Abokyi E, Appiah-Konadu P, Abokyi F et al. (2019) Industrial growth and emissions of CO₂ in Ghana: The role of financial development and fossil fuel consumption. *Energy Rep* 5: 1339–1353. <https://doi.org/10.1016/j.egy.2019.09.002>
- Ahmad N, Du L, Lu J, et al. (2017) Modelling the CO₂ emissions and economic growth in Croatia: Is there any environmental Kuznets curve? *Energy* 123: 164–172. <https://doi.org/10.1016/j.rser.2016.12.106>
- Akbostancı E, Türüt-Aşık S, Tunç Gİ (2009) The relationship between income and environment in Turkey: Is there an environmental Kuznets curve? *Energ Policy* 37(3): 861–867. <http://dx.doi.org/10.1016/j.enpol.2008.09.088>
- Ali W, Abdullah A, Azam M (2017) Re-visiting the environmental Kuznets curve hypothesis for Malaysia: Fresh evidence from ARDL bounds testing approach. *Renew Sust Energ Rev* 77: 990–1000. <https://doi.org/10.1016/j.rser.2016.11.236>
- Andreoni J, Levinson A (2001) The simple analytics of the environmental Kuznets curve. *J Public Econ* 80(2): 269–286. [https://doi.org/10.1016/S0047-2727\(00\)00110-9](https://doi.org/10.1016/S0047-2727(00)00110-9)
- Anenberg SC, Henze DK, Tinney V et al. (2018) Estimates of the global burden of ambient PM_{2.5}, Ozone, and NO₂ on asthma incidence and emergency room visits. *Environ Health Persp* 126(10): 107004. <https://doi.org/10.1289/EHP3766>
- Banerjee A, Dolado J, Mestre R (1998) Error-correction mechanism tests for cointegration in a single-equation framework. *J Time Ser Anal* 19(3): 267–283. <https://doi.org/10.1111/1467-9892.00091>
- Barnes PW, Williamson CE, Lucas RM et al. (2019) Ozone depletion, ultraviolet radiation, climate change, and prospects for a sustainable future. *Nat Sustain* 2: 569–579. <https://doi.org/10.1038/s41893-019-0314-2>
- Bölük G and Mert M (2015) The renewable energy, growth, and environmental Kuznets curve in Turkey: An ARDL approach. *Renew Sust Energ Rev* 52: 587–595. <https://doi.org/10.1016/j.rser.2015.07.138>
- Cabinet Office (2019) Society 5.0. https://www8.cao.go.jp/cstp/english/society5_0/index.html. Accessed 23 Oct 2019
- Cervero R (2003) Road expansion, urban growth, and induced travel: A path analysis. *JAPA* 69(2): 145–163. <https://doi.org/10.1080/01944360308976303>
- Chen X, Shao S, Tian Z et al. (2017) Impacts of air pollution and its spatial spillover effect on public health based on China's big data sample. *J Clean Prod* 142: 915–925. <https://doi.org/10.1016/j.jclepro.2016.02.119>

- City of Kitakyushu (2018) Kitakyushu City the Sustainable Development Goals Report 2018. Institute for Global Environmental Strategies, Kanagawa.
- City of Kitakyushu (n.d.) 2. 人口 [2. Population].
https://www.city.kitakyushu.lg.jp/soumu/file_0348.html. Accessed 13 June 2019
- City of Kitakyushu (n.d.) 5. 工業 [5. Industry].
https://www.city.kitakyushu.lg.jp/soumu/file_0351.html. Accessed 13 June 2019
- City of Kitakyushu (n.d.) 14. 建設、住宅 [14. Construction and Housing].
https://www.city.kitakyushu.lg.jp/soumu/file_0306.html. Accessed 13 June 2019
- City of Kitakyushu (n.d.) 16. 衛生、環境、公害 [16. Hygiene, Environment, Pollution].
https://www.city.kitakyushu.lg.jp/soumu/file_0308.html. Accessed 13 June 2019
- Crespo Cuaresma J, Danylo O, Fritz S et al. (2017) Economic Development and Forest Cover: Evidence from Satellite Data. *Sci Rep* 7(1): 40678. <https://doi.org/10.1038/srep40678>
- Daniel JS, Solomon S (1998) On the climate forcing of carbon monoxide. *J Geophys Res-Atmos* 103(D11): 13249–13260. <https://doi.org/10.1029/98JD00822>
- De Bruyn SM (1997) Explaining the Environmental Kuznets Curve: Structural change and international agreements in reducing sulphur emissions. *Environ Dev Econ* 2(4): 485–503. <https://doi.org/10.1017/S1355770X97000260>
- De Gouw JA, Parrish DD, Frost GJ et al. (2014) Reduced emissions of CO₂, NO_x, and SO₂ from U.S. power plants owing to switch from coal to natural gas with combined cycle technology. *Earth's Future* 2(2): 75–82. <https://doi.org/10.1002/2013EF000196>
- Death C (2015) Four discourses of the green economy in the global South. *Third World Q* 36(12): 2207–2224. <https://doi.org/10.1080/01436597.2015.1068110>
- Diao XD, Zeng SX, Tam CM et al. (2009) EKC analysis for studying economic growth and environmental quality: a case study in China. *J Clean Prod* 17(5): 541–548. <https://doi.org/10.1016/j.jclepro.2008.09.007>
- Dinda S (2004) Environmental Kuznets Curve hypothesis: A survey. *Ecol Econ* 49(4): 431–455. <https://doi.org/10.1016/j.ecolecon.2004.02.011>
- Duarte F, Álvarez R (2019). The data politics of the urban age. *Palgrave Commun* 5(1): 54. <https://doi.org/10.1057/s41599-019-0264-3>
- Duran-Fernandez R, Santos G (2014) Regional convergence, road infrastructure, and industrial diversity in Mexico. *Res Transp Econ* 46: 103–110. <https://doi.org/10.1016/j.retrec.2014.09.007>
- Engle RF, Granger CWJ (1987) Co-Integration and Error Correction: Representation, estimation, and testing. *Econometrica* 55(2): 251. <https://doi.org/10.2307/1913236>

- Intergovernmental Panel on Climate Change (2014) *Climate Change 2014: Impacts, Adaptation, and Vulnerability*. Cambridge University Press, New York.
- Friedman L (2019) White house tried to stop climate science testimony, documents show. <https://www.nytimes.com/2019/06/08/climate/rod-schoonover-testimony.html>. Accessed 14 June 2019
- Fujikura R (2007) Administrative guidance of Japanese local government for air pollution control. In: Terao T, Otsuka K (eds) *Development of Environmental Policy in Japan and Asian Countries*. Palgrave Macmillan UK, London, p 90–116. <https://doi.org/10.1057/9780230624931>
- Gakidou E, Afshin A, Abajobir AA et al. (2017) Global, regional, and national comparative risk assessment of 84 behavioural, environmental and occupational, and metabolic risks or clusters of risks, 1990–2016: a systematic analysis for the Global Burden of Disease Study 2016. *Lancet* 390(10100): 1345–1422. [https://doi.org/10.1016/S0140-6736\(17\)32366-8](https://doi.org/10.1016/S0140-6736(17)32366-8)
- Galeotti M, Lanza A (2005) Desperately seeking environmental Kuznets. *Environ Model Softw* 20(11): 1379–1388. <https://doi.org/10.1016/j.envsoft.2004.09.018>
- Ge X, Zhou Z, Zhou Y et al. (2018) A spatial panel data analysis of economic growth, urbanization, and NOx emissions in China. *Int J Environ Res Public Health* 15(4): 725. <https://doi.org/10.3390/ijerph15040725>
- Gibbons S, Lyytikäinen T, Overman HG et al. (2019) New road infrastructure: The effects on firms. *J Urban Econ* 110: 35–50. <https://doi.org/10.1016/j.jue.2019.01.002>
- Gielen D, Moriguchi Y (2002) CO2 in the iron and steel industry: an analysis of Japanese emission reduction potentials. *Energ Policy* 30(10): 849–863. [https://doi.org/10.1016/S0301-4215\(01\)00143-4](https://doi.org/10.1016/S0301-4215(01)00143-4)
- Government of Japan (2007) *Becoming a leading environmental nation in the 21st century: Japan's strategy for a sustainable society*. <https://www.env.go.jp/en/focus/attach/070606-b.pdf>
- Government of Japan (2010) *On the new growth strategy*. https://www.cas.go.jp/jp/seisaku/npu/policy04/pdf/20100706/20100706_newgrowstrategy.pdf
- Government of Japan (2014) *Strategic energy plan*. https://www.enecho.meti.go.jp/en/category/others/basic_plan/pdf/4th_strategic_energy_plan.pdf
- Grossman G, Krueger A (1991) *Environmental impacts of a North American Free Trade Agreement*. National Bureau of Economic Research, Cambridge. <https://doi.org/10.3386/w3914>

- Grossman GM, Krueger AB (1995) Economic Growth and the Environment. *Q J Econ* 110(2): 353–377. <https://doi.org/10.2307/2118443>
- Guderian R (1985) *Air Pollution by Photochemical Oxidants: Formation, Transport, Control, and Effects on Plants*. Springer Berlin Heidelberg, Berlin.
<http://public.ebib.com/choice/publicfullrecord.aspx?p=3091349>
- Hammer S, Kamal-Chaoui L, Robert A et al. (2011) Cities and green growth: A conceptual framework. *OECD Regional Development Working Papers*.
<https://doi.org/10.1787/5kg0tflmzx34-en>
- Higazy M, Essa KSM, Mubarak F et al. (2019) Analytical Study of Fuel Switching from Heavy Fuel Oil to Natural Gas in clay brick factories at Arab Abu Saed, Greater Cairo. *Sci Rep* 9(1): 10081. <https://doi.org/10.1038/s41598-019-46587-w>
- Hill RJ, Magnani E (2002) An exploration of the conceptual and empirical basis of the Environmental Kuznets Curve. *Australian EP* 41(2): 239–254.
<https://doi.org/10.1111/1467-8454.00162>
- Holroyd C (2018) *Green Japan: Environmental Technologies, Innovation Policy, and the Pursuit of Green Growth (Japan and Global Society)*. University of Toronto Press, Toronto.
- Japan for Sustainability (2013) 'Kitakyushu Model' for Green City Development Published in Three Languages.
https://www.japanfs.org/en/news/archives/news_id034461.html?fbclid=IwAR2zr4lxkY8aNrH00iHbVH_5_kx5b_4RItTm2cMmDDPmgjDokpJioA19eU. Accessed 11 Nov 2019
- Johansen S (1988) Statistical analysis of cointegration vectors. *J Econ Dyn Control* 12(2–3): 231–254. [https://doi.org/10.1016/0165-1889\(88\)90041-3](https://doi.org/10.1016/0165-1889(88)90041-3)
- Johnson J, Reck BK, Wang T et al. (2008) The energy benefit of stainless steel recycling. *Energ Policy* 36(1): 181–192. <https://doi.org/10.1016/j.enpol.2007.08.028>
- Kijima M, Nishide K, Ohyama A (2010) Economic models for the environmental Kuznets curve: A survey. *J Econ Dyn Control* 34(7): 1187–1201.
<https://doi.org/10.1016/j.jedc.2010.03.010>
- Kripfganz S, Schneider DC (2016) *ARDL: Stata module to estimate autoregressive distributed lag models*. Chicago.
https://www.stata.com/meeting/chicago16/slides/chicago16_kripfganz.pdf. Accessed 8 Apr 2019
- Lamsal LN, Martin RV, Parrish DD et al. (2013) Scaling relationship for NO₂ pollution and urban population size: A satellite perspective. *Environ Sci Technol* 47(14): 7855–7861.
<https://doi.org/10.1021/es400744g>

- Lelieveld J, Evans JS, Fnais M et al. (2015) The contribution of outdoor air pollution sources to premature mortality on a global scale. *Nature* 525(7569): 367–371. <https://doi.org/10.1038/nature15371>
- Li Y, Qiu L (2015) A comparative study on the quality of China's eco-city: Suzhou vs. Kitakyushu. *Habitat Int* 50: 57–64. <https://doi.org/10.1016/j.habitatint.2015.08.005>
- Low M (2013) Eco-Cities in Japan: Past and Future. *J Urban Technol* 20(1): 7–22. <https://doi.org/10.1080/10630732.2012.735107>
- Machado MM, de Sousa MCS, Hewings G (2016) Economies of scale and technological progress in electric power production: The case of Brazilian utilities. *Energy Econ* 59: 290–299. <https://doi.org/10.1016/j.eneco.2016.06.017>
- Mahmood H, Maalel N, Zarrad O (2019) Trade openness and CO2 emissions: Evidence from Tunisia. *Sustainability* 11(12): 3295. <https://doi.org/10.3390/su11123295>
- McNeely CL, Hahm J (2014) The Big (Data) Bang: Policy, Prospects, and Challenges: Big (Data) Bang. *Rev Policy Res* 31(4): 304–310. <https://doi.org/10.1111/ropr.12082>
- Merlevede B, Verbeke T, De Clercq M (2006) The EKC for SO2: Does firm size matter? *Ecol Econ* 59(4): 451–461. <https://doi.org/10.1016/j.ecolecon.2005.11.010>
- Michael K, Miller KW (2013) Big Data: New Opportunities and New Challenges [Guest editors' introduction]. *Computer* 46(6): 22–24. <https://doi.org/10.1109/MC.2013.196>
- Ministry of Economy, Trade and Industry (1999) Top runner program. Ministry of Economy, Trade and Industry. <https://www.iea.org/policiesandmeasures/pams/japan/name-21573-en.php>. Accessed 20 Oct 2019
- Ministry of the Environment (2016) Overview of the plan for global warming countermeasures. <https://www.env.go.jp/press/files/en/676.pdf>. Accessed 20 Oct 2019
- Mora C, Spirandelli D, Franklin EC et al. (2018) Broad threat to humanity from cumulative climate hazards intensified by greenhouse gas emissions. *Nat Clim Change* 8(12): 1062–1071. <https://doi.org/10.1038/s41558-018-0315-6>
- Narayan PK, Narayan S (2010) Carbon dioxide emissions and economic growth: Panel data evidence from developing countries. *Energy Policy* 38(1): 661–666. <https://doi.org/10.1016/j.enpol.2009.09.005>
- National Research Council (2011) America's Climate Choices. National Academies Press, Washington. <https://doi.org/10.17226/12781>
- Nielsen H (2018) Technology and scale changes: The steel industry of a planned economy in a comparative perspective. *Econ His Dev Reg* 33(2): 90–122. <https://doi.org/10.1080/20780389.2018.1432353>

- OECD (2013) Green Growth in Kitakyushu, Japan. OECD Green Growth Studies.
<https://doi.org/10.1787/9789264195134-en>
- Ogihara A (2007) Eco-industrial park policies in Japan and PRC. Paper presented at 3R Workshop on Effective Waste Management and Resource Use Efficiency in East and Southeast Asia, Manila, Philippines, 2007. <https://iges.or.jp/en/pub/eco-industrial-park-policies-japan-and-prc>
- Oh D, Lee Y-G (2016) Productivity decomposition and economies of scale of Korean fossil-fuel power generation companies: 2001–2012. *Energy* 100: 1–9.
<https://doi.org/10.1016/j.energy.2016.01.004>
- Ota T (2017) Economic growth, income inequality, and environment: assessing the applicability of the Kuznets hypotheses to Asia. *Palgrave Commun* 3(1): 17069.
<https://doi.org/10.1057/palcomms.2017.69>
- Ozcan B (2013) The nexus between carbon emissions, energy consumption, and economic growth in Middle East countries: A panel data analysis. *Energ Policy* 62: 1138–1147.
<https://doi.org/10.1016/j.enpol.2013.07.016>
- Özokcu S, Özdemir Ö (2017) Economic growth, energy, and environmental Kuznets curve. *Renew Sust Energ Rev* 72: 639–647. <https://doi.org/10.1016/j.rser.2017.01.059>
- Panaïotou T (1993) Empirical Tests and Policy Analysis of Environmental Degradation at Different Stages of Economic Development. International Labour Organization, Geneva.
- Panayotou T (1997) Demystifying the environmental Kuznets curve: Turning a black box into a policy tool. *Environ Dev Econ* 2(4): 465–484.
<https://doi.org/10.1017/S1355770X97000259>
- Park S-Y, Lee K-S, Yoo S-H (2016) Economies of scale in the Korean district heating system: A variable cost function approach. *Energ Policy* 88: 197–203.
<https://doi.org/10.1016/j.enpol.2015.10.026>
- Pesaran MH, Shin Y (1999) An Autoregressive Distributed-Lag Modelling approach to cointegration analysis. In: Strom S (ed.) *Econometrics and Economic Theory in the 20th Century*. Cambridge University Press, Cambridge, p 371–413.
<https://doi.org/10.1017/CCOL521633230.011>
- Pesaran MH, Shin Y, Smith RJ (2001) Bounds testing approaches to the analysis of level relationships. *J Appl Econom* 16(3): 289–326. <https://doi.org/10.1002/jae.616>
- Phillips PCB, Hansen BE (1990) Statistical inference in instrumental variables regression with I(1) processes. *Rev Econ Stud* 57(1): 99. <https://doi.org/10.2307/2297545>
- Rafindadi AA (2016) Revisiting the concept of environmental Kuznets curve in period of energy disaster and deteriorating income: Empirical evidence from Japan. *Energ Policy* 94: 274–284. <https://doi.org/10.1016/j.enpol.2016.03.040>

- Shafik N, Bandyopadhyay S (1992) Economic growth and environmental quality: Time-series and cross-country evidence. World Bank, Washington.
- Sharma SS (2011) Determinants of carbon dioxide emissions: Empirical evidence from 69 countries. *Appl Energy* 88(1): 376–382. <https://doi.org/10.1016/j.apenergy.2010.07.022>
- Shin Y, Yu B, Greenwood-Nimmo M (2014) Modelling asymmetric cointegration and dynamic multipliers in a nonlinear ARDL framework. In: Sickles R, Horrace WC (eds) *Festschrift in Honor of Peter Schmidt*. Springer-Verlag, New York, p 281–314. https://doi.org/10.1007/978-1-4899-8008-3_9
- Sinha A, Bhattacharya J (2016) Environmental Kuznets curve estimation for NO₂ emission: A case of Indian cities. *Ecol Indic* 67: 1–11. <https://doi.org/10.1016/j.ecolind.2016.02.025>
- Strode SA, Duncan BN, Yegorova EA et al. (2015) Implications of carbon monoxide bias for methane lifetime and atmospheric composition in chemistry climate models. *Atmospheric Chem Phys* 15(20): 11789–11805. <https://doi.org/10.5194/acp-15-11789-2015>
- Thacker S, Adshead D, Fay M et al. (2019) Infrastructure for sustainable development. *Nat Sust* 2(4): 324–331. <https://doi.org/10.1038/s41893-019-0256-8>
- The World Bank (1996) Japan's experience in urban environmental management: Kitakyushu, a case study. World Bank Environment & Natural Resources Division, Washington.
- Tsuruta T, Honda Y, Fujiyama A et al. (2016) Structural changes in the Kitakyushu eco-town initiative based on a multi-year survey of materials flow. *Inter J of Environ Sci Dev* 7(12): 908–912. <https://doi.org/10.18178/ijesd.2016.7.12.903>
- Vrieze SI (2012) Model selection and psychological theory: A discussion of the differences between the Akaike information criterion (AIC) and the Bayesian information criterion (BIC). *Psychol Methods* 17(2): 228–243. <https://doi.org/10.1037/a0027127>
- Vuong QH (2018) The (ir)rational consideration of the cost of science in transition economies. *Nat Hum Behav* 2(1): 5–5. <https://doi.org/10.1038/s41562-017-0281-4>
- Vuong QH, La VP, Vuong TT et al. (2018) An open database of productivity in Vietnam's social sciences and humanities for public use. *Sci Data* 5: 180188. <https://doi.org/10.1038/sdata.2018.188>
- Vuong QH (2019) Breaking barriers in publishing demands a proactive attitude. *Nat Hum Behav* 3(10): 1034. <https://doi.org/10.1038/s41562-019-0667-6>
- Vuong QH, Ho MT, Nguyen HKT, Nguyen MH. (2019). The trilemma of sustainable industrial growth: Evidence from a piloting OECD's Green city. *Palgrave Communications* 5; DOI: 10.1057/s41599-019-0369-8. <https://www.nature.com/articles/s41599-019-0369-8>.
- Wallace-Wells D (2019) *The Uninhabitable Earth: Life after Warming*. First edition. Tim Duggan Books, New York.

- Wang Y, Wang J (2019) Does industrial agglomeration facilitate environmental performance: New evidence from urban China? *J Environ Manage* 248: 109244. <https://doi.org/10.1016/j.jenvman.2019.07.015>
- WHO (2019) Air Pollution. <https://www.who.int/airpollution/en/>. Accessed 8 May 2019
- Wilkinson MD, Dumontier M, Aalbersberg IJ et al. (2016) The FAIR Guiding Principles for scientific data management and stewardship. *Sci Data* 3(1): 160018. <https://doi.org/10.1038/sdata.2016.18>
- World Bank (2012) Inclusive Green Growth: The Pathway to Sustainable Development. The World Bank. <https://doi.org/10.1596/978-0-8213-9551-6>
- Yoshioka S, Kawasaki H (2016) Japan's high-growth postwar period: The role of economic plans. Economic and Social Research Institute - The Government of Japan.
- Zhang K, Batterman S (2013) Air pollution and health risks due to vehicle traffic. *Sci Total Environ* 450–451: 307–316. <https://doi.org/10.1016/j.scitotenv.2013.01.074>
- Zhang Q, Jiang X, Tong D et al. (2017) Transboundary health impacts of transported global air pollution and international trade. *Nature* 543(7647): 705–709. <https://doi.org/10.1038/nature21712>
- Zheng J, Suh S (2019) Strategies to reduce the global carbon footprint of plastics. *Nat Clim Change* 9(5): 374–378. <https://doi.org/10.1038/s41558-019-0459-z>
- Zhong Q, Huang Y, Shen H et al. (2017) Global estimates of carbon monoxide emissions from 1960 to 2013. *Environ Sci Pollut Res* 24(1): 864–873. <https://doi.org/10.1007/s11356-016-7896-2>