

Nonverbal Communication and Deceit in Different Personality Clusters

Abbie Marono, David D. Clarke, Joe Navarro & David A. Keatley

<http://dx.doi.org/10.1080/13218719.2017.1308783>

Abstract

Despite difficulties in interpretation, nonverbal communication is especially important in forensic settings, such as police investigations. Three distinct clusters of personality disorders have been outlined as being associated with criminal behaviour. Understanding the similarities and differences between these personality clusters and nonverbal communication could help investigators look for key signs of psychological distress or deception. The current research proposes a novel approach to nonverbal communication: behaviour sequence analysis (BSA). An application of this approach is outlined to investigate whether criminals with different personality types are better at concealing emotions and nonverbal communication when being interrogated. The results indicate that while sequences are generally similar across clusters, individuals from different personality clusters exhibit unique patterns. This research provides an initial step towards a new area of nonverbal communication research and application, which could be used in future research to highlight increased possibility of deception or concealment of emotion.

Keywords: behaviour sequence analysis, deception, nonverbal communication, personality

Introduction

Personality disorders (PDs) in psychology are typically diagnosed using the Diagnostic and Statistical Manual of Mental Disorders – Fifth Edition (DSM-V; APA, 2013 American Psychiatric Association. (2013). *Diagnostic and statistical manual of mental disorders: DSM-V (5th ed.)*. Washington, DC: American Psychiatric Association. Within the DSM-V, personality disorders are defined as an enduring pattern of inner experience and behavior that deviates markedly from the expectations of the individual's culture, that are pervasive and inflexible, have an onset in adolescence or early childhood, is stable over time, and leads to distress or impairment. (APA, 2013 American Psychiatric Association. (2013). *Diagnostic and statistical manual of mental disorders: DSM-V (5th ed.)*. Washington, DC: American Psychiatric Association.

The DSM-V lists ten personality disorders, which are grouped into one of three distinct clusters labelled A, B, and C. Each of these clusters has been found to be associated with criminal behaviour (Davison & Janca, 2012) and individually associated with different types of crime (Francia et al., 2010). While there is a wealth of research on these personality clusters, interpersonal styles, and criminal behaviours (Furnham & Taylor, 2011; Navarro & Karlins, 2008), there is less research on the relationship between personality clusters and deception (Paulhus & John, 1998). Given the relationship between these personality clusters and criminal behaviour, it is possible that individuals with these personality clusters will be involved in police investigations or questioning during their lifetime. A key concern, therefore, is to understand whether certain personality clusters are better at deceiving or masking psychological distress, and whether there are methods to overcome this investigative limitation. The psychological literature on lie detection focuses on a number of aspects, from spoken language (Porter & Yuille, 1996) to nonverbal communication (DePaulo et al., 2003) The

current research outlines a new method – behaviour sequence analysis (BSA) – for studying nonverbal communication patterns. As an illustrative example of how BSA can be used, the nonverbal communication of criminals who have been diagnosed with personality clusters (A, B, or C) will be investigated. BSA will be outlined and shown to provide a complementary method to existing nonverbal communication approaches. The present research, therefore, builds on a growing area in the research (Burgoon, Proudfoot, Schuetzler, & Wilson, 2014; Burgoon, Schuetzler, & Wilson, 2015) Individuals with Cluster A personalities are generally defined as being bizarre or eccentric in contrast to the general population. Cluster A includes paranoid, schizoid, and schizotypal PDs, which have been linked to extremely violent behaviour, including murder, robbery, blackmail, arson, and kidnapping (Burton, McNeil, & Binder, 2012)(Beale, D., Cox, T., Clarke, D. D., Lawrence, C., & Leather, P. (1998) Links have also been shown between Cluster A and incarceration for prostitution (Warren et al., 2002) Cluster B personalities are described as being dramatic and/or erratic, and include antisocial, borderline, histrionic, and narcissistic PDs. These disorders are characterised by callous and impulsive behaviour towards others, usually involving an obvious lack of empathy or respect for social norms. The majority of the literature suggests that Cluster B is closely linked to many types of criminal behaviour (Howard, 2015) Individuals diagnosed with narcissistic and borderline PDs are strongly associated with acts of antisocial behaviour (Conrad & Morrow 2000) Leichsenring & Leibing, 2003), (Wilkins & Warner 2001) Some of the crimes that are strongly associated with borderline personality disorder (BPD) are serial killings (Papazian, 2001), rage-based and impulsive murders (Cartwright, 2001) and domestic violence (Else, Wonderlich, Beatty, Christie, & Staton, 1993). Cluster C personalities are often referred to as anxious and/or fearful, consisting of avoidant, dependent, and obsessive-compulsive PDs. Huang et al. (2009) Huang, Y., Kotov, R., De Girolamo, G., Preti, A., Angermeyer, M., Benjet, C., ... Lee, S. (2009) suggested that Cluster C personalities do not tend to be related to violent crimes, but they do tend to be common within acts of anti-social behaviour and minor crimes, such as shoplifting. However, there are still reported cases of homicides amongst this group (Laajasalo, Ylipekka, & Häkkänen-Nyholm, 2013). Although there is some conflict over the exact offences related to each group, the overwhelming majority of the research shows that there is a strong connection between PDs and offending behaviour (Davison & Janca, 2012). If an individual has committed a criminal act and is subsequently interrogated or interviewed by an investigator, he or she may attempt to conceal his or her true emotions about the crime in order to avoid being exposed as guilty. Research has suggested that when an individual tries to conceal an emotion, he or she may exhibit what is referred to as psychological distress, or 'emotional leakage' (Waxer, 1977). Emotional leakages are when clues to an individual's true emotions are exhibited without conscious awareness or recognition. For example, an individual is happy about something but attempting to mask that happiness with false sadness, he or she may show a brief smile or a raising of the corners of the lips without conscious realisation. This expression that the individual is attempting to mask, which lasts only for a fraction of a second, is known as a micro expression (Ekman & Friesen, 1969). Previous research has indicated that some facial muscles, which are associated with emotion, cannot be consciously repressed, and that the stronger the emotion is, the harder it is to conceal (Krauss, Chen, & Chawla, 1999). Research into micro tells is a development in classic behaviour analysis, which shows that some individuals have particular idiosyncratic behaviours that indicate whether they are lying, commonly referred to as tells (Collett, 2003). This has led to the development of training programmes within the justice system to teach law officials and agents how to infer emotional states and intentions. However, simply recognising one single behaviour as an indication of deception may not be reliable, due to individual differences and variations. (Blanck, Rosenthal, Snodgrass, DePaulo, & Zuckerman, 1981). Some practitioners have suggested that clusters of behaviours are better indicators of deceptive intent (Navarro & Karlins, 2008; Poppe, Van Der Zee, Heylen, & Taylor, 2014). More recently,

however, researchers have taken this field a step further by suggesting that it may not just be a case of one or several behaviours occurring, but instead that the sequence of behaviours may be a better indicator of deception (Keatley, 2016).

Behaviour Sequence Analysis (BSA)

BSA is a method that is useful for outlining the dynamic relationship between chains of events or behaviours (Beaune, Giebels, & Taylor, 2010; Keatley, Barsky, & Clarke, 2017; Taylor et al., 2008). In particular, rather than investigating specific behaviours in isolation (e.g. single tells), BSA allows an examination of transitions between behaviours. Sequence analysis in the present research involves three main stages (Clarke & Crossland, 1985). First, taking an individual's entire response to a question and then unitising the response into discrete behaviours or units of action. Next, classification, which involves placing behaviours or event into categories that are functionally similar. Finally, analysis involves measuring the transitions between behaviour pairs.

BSA can be used to investigate the sequence of behaviours that a suspect (or interviewee) makes after being asked a question. For instance, the suspect first exhibited a furrowed brow (coded as behaviour 'A') followed by shaking his or her head (coded as behaviour 'B') and finally followed by looking up (coded as behaviour 'C'). In this simplified example, the lag-one sequence analysis involves testing whether 'A→B', 'A→C', 'B→C' pairs were more likely to happen than would be expected by chance alone. This process is repeated over a much larger behaviour list and across participants to indicate which behaviour pairs and chains are seen more within the data set.

BSA has previously been used in a range of social interactions and episodes, including marital conflict (Gottman, 1979), violent episodes between people (Beale, Cox, Clarke, Lawrence, & Leather, 1998; Turner & Clarke, 2009), police interrogations (Beaune et al., 2010; Taylor et al., 2008), drink driving (Keatley et al., 2016), and rape (Fossi, Clarke, & Lawrence, 2005; Lawrence, Fossi, & Clarke, 2010). It has also previously been used in relation to nonverbal communication and deception (Keatley, 2016). This research shows that an examination of the sequence of behaviours that individuals exhibit when lying highlights differences between different individuals and different types of lie (i.e. lies about different subjects). The current research, therefore, continues a growing trend in the literature by applying BSA to different personality clusters.

Present Study

The present study uses BSA to investigate behaviours displayed by real-world recordings of individuals lying. The sample consists of criminals and people of at high levels of power who were recorded making statements that were later unequivocally exposed as being untrue. The clips are divided into groups, depending on which personality cluster the participant belongs to according to official diagnosis. Each individual was analysed separately and the resulting sequences were compared between groups. The findings of the current research add to the growing literature on

nonverbal communication analysis, as well as offering a novel step forward in analysing behaviours. In particular, the current research outlines similarities and differences between the deceptive behaviour sequences of individuals from the three personality clusters and a control group (of non-cluster individuals). Given the novel approaches used in the current research, no formal hypotheses were made. If sequences are found to be similar across groups then it may be concluded that individuals display similar behavioural patterns regardless of personality cluster. However, if there are differences between groups then this research may indicate a novel approach to investigating deception behaviours for different personality clusters.

Methods

Participants

A sample of 30 individuals (22 male, 8 female) between the ages of 19 and 53 years was collected via online websites, archive footage documents, and listed police reports. Inclusion criteria are that the person was officially diagnosed as having a personality disorder, distinguished into a particular cluster, and unequivocally exposed to be lying by later investigation and evidence. There is no indication of any medical condition that would affect the body movements of any participant in the study. It was important to use real-world data so that the results could be made as valid as possible; however, there are limited clear video segments of statements caught on camera which are later unequivocally shown to be lies and which are made by people who are also classified into a personality cluster. Therefore, the stopping criterion was when no more recordings of people lying in real life, who are clearly diagnosed as having a classifiable personality disorder, were available. The personality types for each participant were recorded through the examination of released police reports and were then categorised into four groups (according to DSM-V classification). The groups consists of Cluster A (n = 8), Cluster B (n = 9), Cluster C (n = 5) and a control group of individuals who are not categorised as belonging in any of the personality clusters (n = 8).

Materials

Through several media sources and released police reports, video recordings of politicians, criminals and famous people were collected. Each recording contains real-world examples of participants constructing deceptive statements. Each clip used for analysis was a question–response segment. When a new question began, the previous sequence would terminate and a new sequence commenced. The crimes varied across the groups and therefore were not used as a grouping variable for analysis.¹¹ While we it is appreciated that this is another way of analysing the data, it was not possible given the variation in the actual crimes. For completion, the data set was analysed based on crimes committed, but no clear patterns emerged. Additional analyses are available from the corresponding author on request.

[View all notes](#)

However, all crimes were of a serious offence (e.g. murder). A total of 111 clips were obtained across the sample (n = 28 for Cluster A, n = 24 for Cluster B, n = 30 for Cluster C, and n = 29 for the control group). The length of the clips ranges from 4.0 to 65.0 seconds (M = 18.3, SD = 12.2).

Coding Procedure

The clips were sequenced based on a question and answer style. When a question was asked, triggering a false response, the recording of behaviours would begin until the end of the response. Alternatively, if a new question was asked then the sequence would end and a new one would begin in response to the new question.

In order to obtain an accurate analysis of micro expressions and discrete body movements, clips were viewed frame by frame. An extensive and detailed coding scheme was created which includes every documented micro expression and micro tell.²² Available from the corresponding author on request.

View all notes

These include every nonverbal behaviour associated with deception throughout the nonverbal communication literature (Vrij, Semin, & Bull, 1996), as well as any behaviour or movement exhibited by the participants. Identical coding systems were used for each cluster group. In order to ensure inter-rater reliability, two individual researchers analysed each clip, resulting in good reliability (Cohen's $k = .80$). No issues were encountered during analysis or coding by either researcher, as the nature of the task is straightforward.

Statistical Analysis

The clips were organised into separate groups based on personality cluster. They were then coded into chains of distinct categories and implemented into the statistical software R (R Core Team, 2013). A BSA program was used to analyse the data. Frequencies of individual behaviours were calculated first, then sequence analysis was performed.

Results

Analyses were conducted on a total of 111 sequences of deceptive statements produced in response to a question being asked. The first stage of the BSA was to investigate the frequencies of individual behaviour events (Table 1).

Table 1. Frequencies of behaviours exhibited by individuals in the four groups.

The first thing to note is that there is variation between the type of behaviour that occurs most frequently in each of the four groups. However, head nodding occurs frequently in Cluster A (n = 36), Cluster B (n = 31), Cluster C (n = 20), and the control group (n = 15). Other behaviours vary in frequency between groups, and there is no single behaviour that occurs a lot more than any other behaviour for any group. This, therefore, does not support the view that there are clear individual behaviours or 'tells' for deception or psychological distress. Instead, the frequencies show clusters of behaviours with similar frequencies across all groups. Indeed, the frequency table alone does not support any particular bodily movement as a sign of deception. Therefore, further analysis may indicate whether there are differences in sequences of behaviours between groups.

A lag-one behaviour sequence analysis was conducted on each cluster and the control group (Figures 1–4). The first thing to note about the analyses is that a lag-one sequence analysis was conducted. This means that only transitions between pairs of behaviours are analysed and tested.³³ Higher-order analyses are possible (e.g. lag-two); however, these are typically more complex and require more data, with limited gains in terms of analytical outcomes. Higher-order analyses are available from the corresponding author on request.

These pairs then form longer chains. However, it would be incorrect to view the diagram and suggest that longer chains are being analysed. The correct way to interpret the diagram is by moving from one behaviour (the antecedent, i.e. the 'start') to the next behaviour (the sequitur, i.e. Body-Tilts forward). It can then be seen whether the transition between these two behaviours was more likely or less likely than expected by chance according to a standardised residual. The state transition diagrams have been developed to make the interpretation of sequences easier to follow.⁴⁴ Available from the corresponding author on request.

All transitions in the diagram are significant ($p < .05$).

Figure 1. Sequence analysis of behaviours shown by Cluster A individuals.

Figure 2. Sequence analysis of behaviours shown by Cluster B individuals.

Figure 3. Sequence analysis of behaviours shown by Cluster C individuals.

Figure 4. Sequence analysis of behaviours shown by individuals in the control group.

The diagrams should be read one step or transition at a time. For instance, for Cluster A individuals, several behaviours are likely to follow from the start of a question being asked, including Body-Tilts forwards, Body-Self-touch, Body-Point part of body towards exit, Eyes-Look to the side, and Head-Tilt sideways. The arrow thickness indicates different criteria of standardised residuals, which is standard practice in sequence analysis (Townsend et al., 2016); therefore, it can be seen that Eyes-

Look towards exit is the most likely sequitur to Eyes-Look to the side, for instance. There are a number of chains of behaviours and loops that Cluster A individuals exhibit during a response pattern; however, the most likely final behaviours are: Head-Nod and Eyes-Irregular blinking. In contrast, Cluster B individuals are much more likely to begin their responses with Hands-Clenching fists or Mouth-Opening mouth, and much more likely to finish their response patterns with Mouth-Pressing lips together. Cluster C individuals, however, are more likely to begin with Eyes-Look towards exit, Eyes-Furrow eyebrows, or Eyes-Look to the side. Cluster C individuals are also more likely to end their sequence with Mouth-Tightening jaw. Finally, individuals from the control condition are more likely to start their responses with Head-Tilt sideways movements, and are much more likely to end their sequence of behaviours with Mouth-Pressing lips together, Hand-Reach hand out, or Head-Shake head movements.

Discussion

The aim of the current study is twofold: to present a novel method for investigating nonverbal communication, and to test this in an applied setting via BSA of real-world criminal lies, with a particular focus on investigating similarities and differences in nonverbal communication between personality clusters when trying to deceive an interviewer. This research is particularly important in terms of police investigation due to high correlations between individuals with personality disorders and criminal behaviour. The findings provide general support for previous research in the literature which highlights a number of behavioural idiosyncrasies linked to deception (Sporer & Schwandt, 2007). In particular, one of behaviours most frequently displayed in all four groups is the movement of the individual's gaze. The most frequent behaviour displayed during the creation of lying statements for both Cluster A and the control group is looking to the side, which is the second most frequent for Cluster C. However, this is not the case for Cluster B, wherein the individuals tended to look to the side a limited number of times, instead averting their gaze downwards more regularly than any other behaviour. This suggests that across all personalities, frequent eye movements may be indicative of deceptive intent, although the types of eye movement may be different depending on personality type. This further supports previous research into rapid eye movements as cues to deception detection (Mann, Vrij, & Bull, 2002). Another behaviour that occurs frequently across all personality types is the furrowing of eyebrows; however, this is the least common in the control group and most the common in Cluster B, suggesting that many are similar between all personality clusters but that there are certain behaviours that are far less common for the control group. For example, individuals from Clusters A, B, and C commonly nod their head when constructing a lie, which is far less frequently displayed in the control group. Moreover this suggests that some behaviours displayed by the non-cluster individuals may be amplified by those with a personality disorder.

Although there is no isolated sequence that each individual group shares, the fact that the patterns between groups are so different demonstrates that different personality types do change nonverbal communication behaviour during deception. This also suggests that different personality types may be better at hiding deception than others. This could become a basis for police investigation, as once a person's personality type has been identified, it could be used to provide a more reliable sequence of behaviours that is likely to suggest deceptive intent.

If a BSA approach was used to identify patterns in the behaviour of each individual personality cluster when being deceptive, it would determine whether the current literature on nonverbal cues to deception can be applied to individuals of both normal and abnormal mental health. For example, if individuals with a Cluster A personality disorder have a tendency to look down and then shake their head followed by the shrugging of their shoulders when constructing a false statement, whereas individuals with Cluster B or C personalities do not display this sequence, then individual difference patterns could emerge. This could provide a useful next step for other research in the field, currently using electronic body sensors to map movements (Poppe et al., 2014). If interrogators were aware of these behaviour patterns then they may be better able to identify when a suspect is being deceptive by monitoring when a particular sequence of behaviours occurs. Of course, the occurrence of a particular sequence does not necessarily mean that a person is being deceptive, but it may indicate a higher probability of deceptive intent. In such cases, it would also allow investigators to identify how different personality types react to different questions through involuntary changes in their behaviour. These changes in behaviour can be used to indicate the most appropriate area of questioning to focus on. The BSA method can also be used with recorded interviews, allowing analysts more time to study behavioural sequences.

Owing to the nature of the study, a limitation is that gathering baseline behaviours or sequences of behaviours during truthful responses for each participant was not possible, and therefore only lying statements were analysed. This means that there are no baselines from which to measure changes in behaviour. Future research should, therefore, compare behaviour patterns during the production of both truthful and deceptive answers. Findings from such work would indicate which behaviours are isolated to deceptive responses and which are shared between both truthful and dishonest answers, therefore suggesting which behaviours are superior indicators of deception rather than simply identifying which behaviours indicate an emotional response.

Overall, the present study introduces a novel method for investigating nonverbal communication and deception by analysing real-world behaviours that naturally occur rather than in a laboratory setting. This is a major strength as it means that the sequences produced were not artificial and are more generalisable. This new method was used to show how individuals with different personality clusters exhibit different nonverbal communication patterns when attempting to deceive an interviewer. While this area of research is still very new, the potential benefits to investigation and behaviour research are large, especially if the method was to be combined with computer-based motion-tracking technology.

Acknowledgements

The authors would like to acknowledge the reviewers, editors and others for their considerable help and effort.

Disclosure Statement

No potential conflict of interest was reported by the authors.

Notes

1. While we it is appreciated that this is another way of analysing the data, it was not possible given the variation in the actual crimes. For completion, the data set was analysed based on crimes committed, but no clear patterns emerged. Additional analyses are available from the corresponding author on request.

2. Available from the corresponding author on request.

3. Higher-order analyses are possible (e.g. lag-two); however, these are typically more complex and require more data, with limited gains in terms of analytical outcomes. Higher-order analyses are available from the corresponding author on request.

4. Available from the corresponding author on request.

References

- American Psychiatric Association. (2013). *Diagnostic and statistical manual of mental disorders: DSM-V (5th ed.)*. Washington, DC: American Psychiatric Association.
- Beale, D., Cox, T., Clarke, D. D., Lawrence, C., & Leather, P. (1998). Temporal architecture of violent incidents. *Journal of Occupational Health Psychology, 3*, 65–82.
- Beaune, K., Giebels, E., & Taylor, P. J. (2010). Patterns of interaction in police interviews: The role of cultural dependency. *Criminal Justice and Behavior, 37*, 904–925.
- Beale, D., Cox, T., Clarke, D. D., Lawrence, C., & Leather, P. (1998). Temporal architecture of violent incidents. *Journal of Occupational Health Psychology, 3*, 65–82.,
- Blanck, P. D., Rosenthal, R., Snodgrass, S. E., DePaulo, B. M., & Zuckerman, M. (1981). Sex differences in eavesdropping on nonverbal cues: Developmental changes. *Journal of Personality and Social Psychology, 41*, 391–396.
- Burgoon, J. K., Proudfoot, J. G., Schuetzler, R., & Wilson, D. (2014). Patterns of nonverbal behavior associated with truth and deception: Illustrations from three experiments. *Journal of Nonverbal Behavior, 38*, 325–354.
- Burgoon, J. K., Schuetzler, R., & Wilson, D. (2015). Kinesic patterning in deceptive and truthful interactions. *Journal of Nonverbal Behavior, 39*, 1–24.

- Burton, P. R., McNiel, D. E., & Binder, R. L. (2012). Firesetting, arson, pyromania, and the forensic mental health expert. *Journal of the American Academy of Psychiatry and Law*, 40, 355–365.
- Cartwright, D. (2001). The role of psychopathology and personality in rage-type homicide: A review. *South African Journal of Psychology*, 31, 12–19.
- Clarke, D. D., & Crossland, J. (1985). *Action systems: An introduction to the analysis of complex behaviour*. London: Methuen.
- Collett, P. (2003). *The book of tells*. New York: Bantam.
- Conrad, S., & Morrow, R. (2000). Borderline personality organization, dissociation, and willingness to use force in intimate relationships. *Psychology of Men & Masculinity*, 1, 37.
- Davison, S., & Janca, A. (2012). Personality disorder and criminal behavior: What is the nature of the relationship? *Current Opinion in Psychiatry*, 25, 39–45.
- DePaulo, B. M., Lindsay, J. J., Malone, B. E., Muhlenbruck, L., Charlton, K., & Cooper, H. (2003). Cues to deception. *Psychological Bulletin*, 129, 74.
- Ekman, P., & Friesen, W. V. (1969). Nonverbal leakage and clues to deception. *Psychiatry*, 32, 88–106.
- Else, L., Wonderlich, S. A., Beatty, W. W., Christie, D. W., & Staton, R. D. (1993). Personality characteristics of men who physically abuse women. *Psychiatric Services*, 44, 54–58.,
- Fossi, J. J., Clarke, D. D., & Lawrence, C. (2005). Bedroom rape sequences of sexual behavior in stranger assaults. *Journal of Interpersonal Violence*, 20, 1444–1466.
- Francia, C. A., Coolidge, F. L., White, L. A., Segal, D. L., Cahill, B. S., & Estey, A. J. (2010). Personality disorder profiles in incarcerated male rapists and child molesters. *American Journal of Forensic Psychology*, 28, 55.
- Furnham, A., & Taylor, J. (2011). Deception, dissimulation, impression management, lying and the truth. In *Bad Apples* (pp. 148–186). Basingstoke, UK: Palgrave Macmillan.
- Gottman, J. M. (1979). *Marital interaction: Experimental investigations*. New York: Academic Press.
- Howard, R. (2015). Personality disorders and violence: What is the link?. *Borderline Personality Disorder and Emotion Dysregulation*, 2, 1.
- Huang, Y., Kotov, R., De Girolamo, G., Preti, A., Angermeyer, M., Benjet, C., Lee, S. (2009). DSM–IV personality disorders in the WHO World Mental Health Surveys. *The British Journal of Psychiatry*, 195, 46–53.
- Keatley, D. A. (2016). Understanding patterns of action: Sequence analysis in social psychology. In: BPS Social Psychology Section Annual Conference, August 31st–September 2nd, 2016, Cardiff.
- Keatley, D. A., Barsky, A. D., & Clarke, D. D. (2017). Drink driving in the UK: A sequence analysis approach. *Psychology, Crime and Law*, 23, 135–146.
- Krauss, R. M., Chen, Y., & Chawla, P. (1996). Nonverbal behavior and nonverbal communication: What do conversational hand gestures tell us? *Advances in Experimental Social Psychology*, 28, 389–450.

- Laajasalo, T., Yliperä, M., & Häkkänen-Nyholm, H. (2013). Homicidal behavior among people with avoidant, dependent and obsessive-compulsive (Cluster C) personality disorder. *Criminal Behavior and Mental Health, 23*, 18–29.
- Lawrence, C., Fossi, J., & Clarke, D. (2010). A sequential examination of offenders' verbal strategies during stranger rapes: the influence of location. *Psychology, Crime & Law, 16*, 381–400.
- Leichsenring, F., & Leibing, E. (2003). The effectiveness of psychodynamic therapy and cognitive behavior therapy in the treatment of personality disorders: A meta-analysis. *American Journal of Psychiatry, 160*, 1223–1232.
- Mann, S., Vrij, A., & Bull, R. (2002). Suspects, lies, and videotape: An analysis of authentic high-stake liars. *Law and Human Behavior, 26*, 365–376.
- Navarro, J., & Karlins, M. (2008). *What every BODY is saying*. New York, NY: Harper Collins.
- Papazian L. M. (2001). Literature review on the personalities and patterns of serial killers. *Dissertation Abstracts International, 61*, 6144B.
- Paulhus, D. L., & John, O. P. (1998). Egoistic and moralistic biases in self-perception: The interplay of self-deceptive styles with basic traits and motives. *Journal of Personality, 66*, 1025–1060.
- Porter, S., & Yuille, J. C. (1996). The language of deceit: An investigation of the verbal clues to deception in the interrogation context. *Law and Human Behavior, 20*, 443.
- Poppe, R., Van Der Zee, S., Heylen, D., & Taylor, P. (2014). AMAB: Automated measurement and analysis of body motion. *Behavior Research Methods, 46*, 625–633.
- R Core Team. (2013). *R: A language and environment for statistical computing*. R Foundation for Statistical Computing, Vienne, Austria. ISBN 3-900051-07-0, Retrieved from <http://www.R-project.org/>
- Sporer, S. L., & Schwandt, B. (2007). Moderators of nonverbal indicators of deception: A meta-analytic synthesis. *Psychology, Public Policy, and Law, 13*, 1–34.
- Taylor, P. J., Jacques, K., Giebels, E., Levine, M., Best, R., Winter, J., & Rossi, G. (2008). Analysing forensic processes: Taking time into account. *Issues in Forensic Psychology, 8*, 45–57.
- Townsend, E., Wadman, R., Sayal, K., Armstrong, M., Harroe, C., Majumder, P., Vostanis, P., & Clarke, D. D. (2016). Uncovering key patterns in self-harm in adolescents: Sequence analysis using the Card Sort Task for Self-harm (CaTS). *Journal of Affective Disorders, 206*, 161–168.
- Vrij, A., Semin, G. R., & Bull, R. (1996). Insight into behavior displayed during deception. *Human Communication Research, 22*, 544–562
- Warren, J. I., Burnette, M., South, S. C., Chauhan, P., Bale, R., & Friend, R. (2002). Personality disorders and violence among female prison inmates. *Journal of the American Academy of Psychiatry and the Law Online, 30*, 502–509.
- Waxer, P. H. (1977). Nonverbal cues for anxiety: An examination of emotional leakage. *Journal of abnormal psychology, 86*, 306.
- Wilkins, T. M., & Warner, S. (2001). Women in special hospitals: Understanding the presenting behavior of women diagnosed with borderline personality disorder. *Journal of Psychiatric and Mental Health Nursing, 8*, 289–297.

Figure 1. Sequence analysis of behaviours shown by Cluster A individuals.

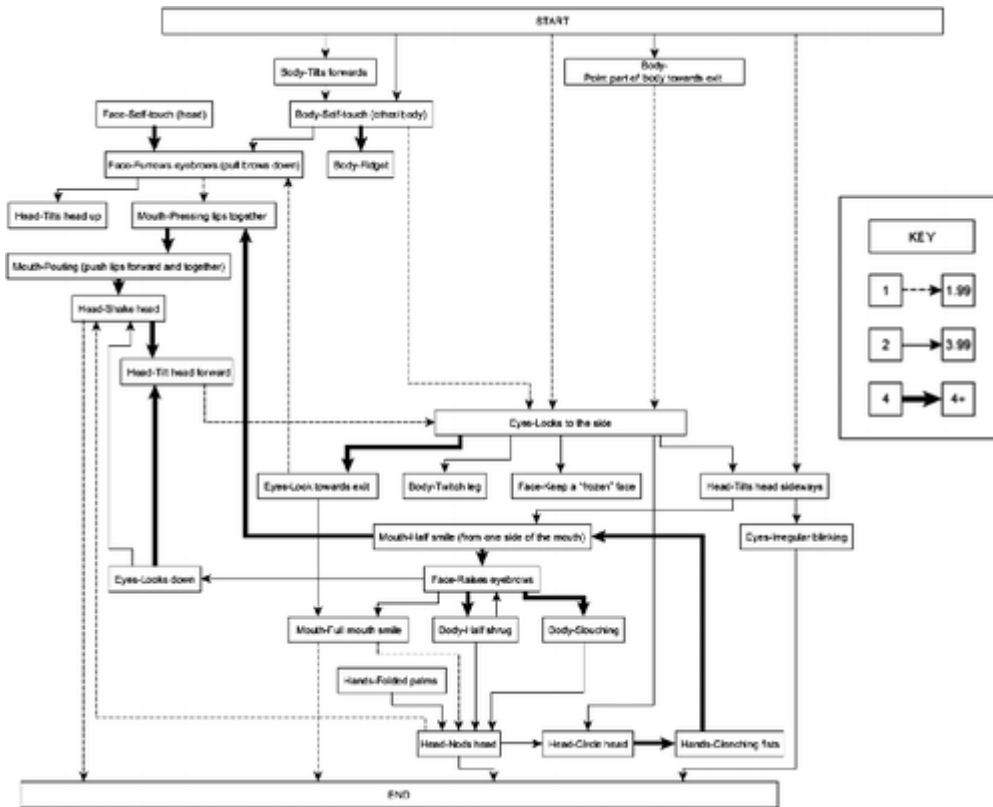


Figure 2. Sequence analysis of behaviours shown by Cluster B individuals.

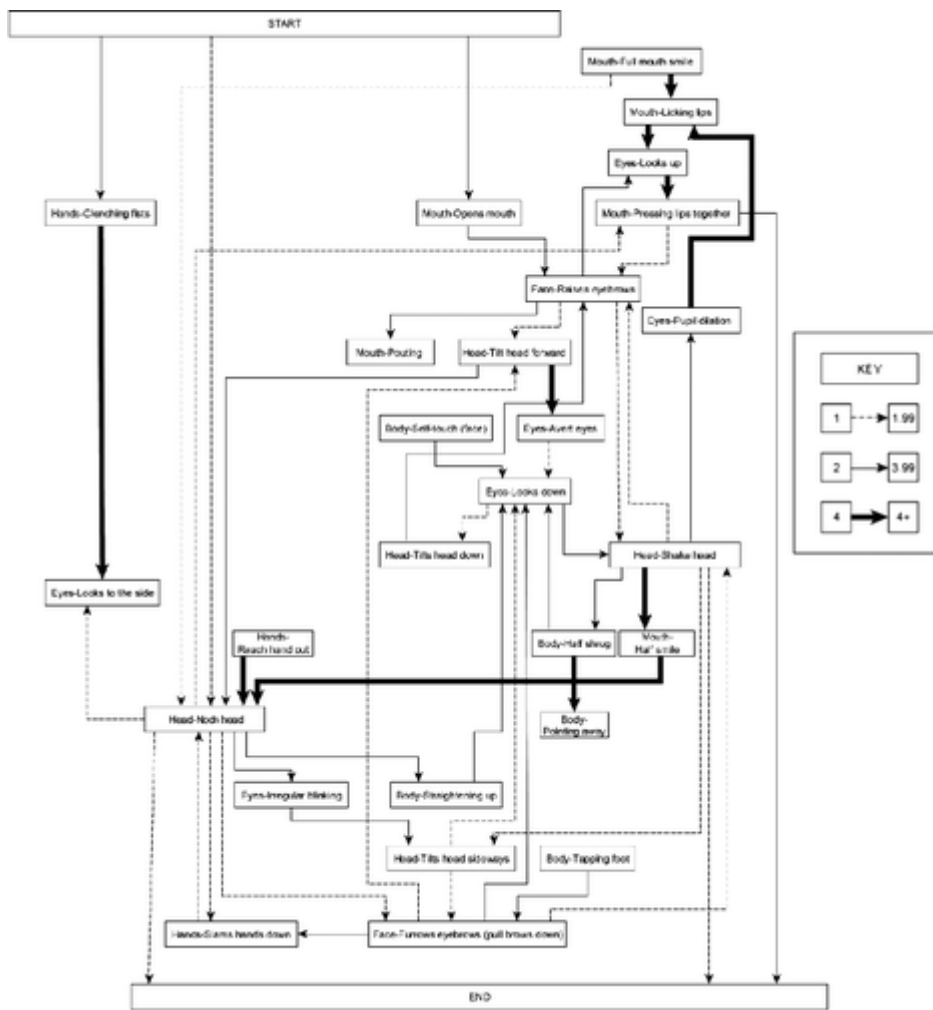


Figure 3. Sequence analysis of behaviours shown by Cluster C individuals.

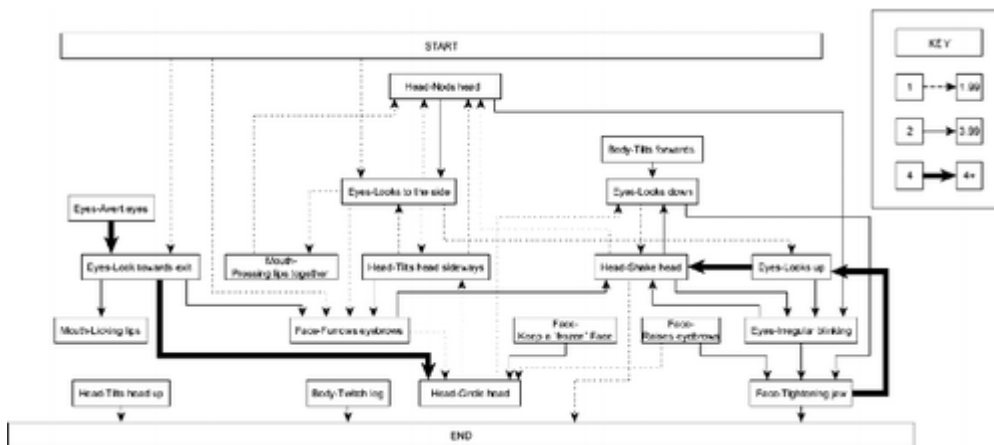


Figure 4. Sequence analysis of behaviours shown by individuals in the control group.

