



Deformation information system for facilitating studies of mining-ground deformations, development, and applications

J. Blachowski, W. Milczarek, and P. Stefaniak

Wroclaw University of Technology, Institute of Mining Engineering, Na Grobli 15, 50-421 Wroclaw, Poland

Correspondence to: J. Blachowski (jan.blachowski@pwr.edu.pl)

Received: 26 July 2013 – Published in Nat. Hazards Earth Syst. Sci. Discuss.: 13 September 2013

Revised: – – Accepted: 30 April 2014 – Published: 3 July 2014

Abstract. The paper presents the concept of the deformation information system (DIS) to support and facilitate studies of mining-ground deformations. The proposed modular structure of the system includes data collection and data visualisation components, as well as spatial data mining, modelling and classification modules. In addition, the system integrates interactive three-dimensional models of the mines and local geology. The system is used to calculate various parameters characterising ground deformation in space and time, i.e. vertical and horizontal displacement fields, deformation parameters (tilt, curvature, and horizontal strain) and input spatial variables for spatial data classifications. The core of the system in the form of an integrated spatial and attributive database has been described. The development stages and the functionality of the particular components have been presented and example analyses utilising the spatial data mining and modelling functions have been shown. These include, among other things, continuous vertical and horizontal displacement field interpolations, calculation of parameters characterising mining-ground deformations, mining-ground category classifications, data extraction procedures and data preparation preprocessing procedures for analyses in external applications.

The DIS has been developed for the Walbrzych coal mines area in SW Poland where long-time mining activity ended at the end of the 20th century and surface monitoring is necessary to study the present-day condition of the former mining grounds.

1 Introduction

The monitoring of active and former mining grounds with geodetic and other (e.g. remote sensing) techniques and analysis of ground deformations due to mining activity are essential to study the behaviour of surface deformations and to produce maps of mining land-risk categories used to assess safety to the infrastructure, human population and the environment. The basic spatial information that is used for the identification and interpretation of mining-ground deformations are vertical and horizontal displacement fields and the related deformation parameters, tilt and curvature of the subsidence surface and horizontal strain (Popiolek, 2009).

The studies of mining-ground deformations require detailed and up-to-date spatial and attribute information on various aspects of mining activity including geological models, mine plans, surface development, geodetic measurements, and other data that are used in complex interpretations of the observed and modelled changes of the ground surface.

These tasks are more and more frequently facilitated with computer technologies. For example, the geographic information technologies (GIT) are now widely used to collect and manage spatial data related to mining deformations (Doležalová et al., 2010), as well as geodynamic activity (Bogusz et al., 2013), geographic information systems (GIS) are used to prepare data for analyses in external applications such as simulations with the finite element method (FEM) (Blachowski and Ellefmo, 2012) or artificial neural networks (Kim et al., 2009; Lee et al., 2012), as well as to visualise results of numerical simulations e.g. mining-ground classifications with fuzzy logic (Choi et al., 2010; Malinowska, 2011). GIS are also used for spatial data mining (Blachowski and Stefaniak, 2012) or to perform various ground deformation analyses with spatial data modelling functions, for example

determination of subsidence surfaces with interpolation techniques (Kowalczyk et al., 2010) or determination of mining-ground deformation parameters such as tilt, curvature or horizontal strain (Chrzanowski et al., 2012).

This paper introduces the concept of deformation information system (DIS) to facilitate studies of mining-induced ground deformations, especially in complex and complicated mining conditions and former underground mining areas. The system's main components and functionality have been described on the example of the DIS for the former coal underground mines in the Walbrzych area in SW Poland.

2 The structure of the DIS

The deformation information system for augmenting studies of mining-ground deformations is based on the modular structure concept. The core of the system is made of the GIS database. The database system manages all of the collected and produced spatial and attributive data related to the mining activity and its influence on the surroundings. It includes, among other things, mining plans (location, geometry of underground workings, mining methods used and temporal mining activity data), locations of geodetic points and results of periodic geodetic measurements, land use and surface development data (Blachowski, 2008).

Then, the main components of the system are the spatial data mining module for knowledge discovery and data extraction with spatial and attribute query functions, the geological modelling module realised with external software and integrated spatially with the system, the spatial data modelling module with data processing models for spatiotemporal analysis and mapping of mining deformations and their characteristics (e.g. deformation parameters), and the data collection module based on terrestrial and remote sensing measurements carried out with geographic information technologies. The DIS is also connected with the multivariate spatial data classification module. Another component allows interactive data presentation in the form of two-dimensional maps and three-dimensional visualisations. The general concept of the deformation information system has been shown in Fig. 1. In the following sections the development and functionality of its main components are described.

3 The Walbrzych coal mines

The idea to develop DIS has arisen from the need to study postmining-ground deformations in the former Walbrzych coal mines area in SW Poland. The extent of the former mines (Thorez, Victoria, Walbrzych), underground workings, shafts and built-up areas have been shown in Fig. 2. Underground mining of coal lasted there for several hundred years and ended in the late 1990s of the 20th century. The following mining systems were used: long-wall and caving (predominately) and long-wall with various forms of fill (pneu-

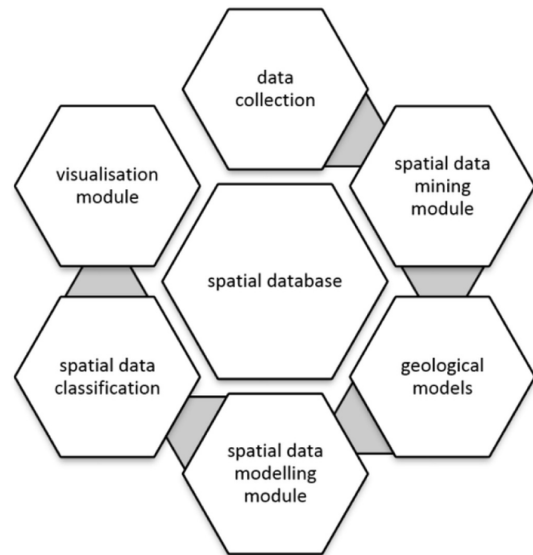


Figure 1. General structure of the deformation information system.

matic, dry, dry with material from dead drifts) (Piatek and Piatek, 2002). The hard coal industry has caused significant changes of the surface and its effects are visible in the local landscape to this day (waste dumps, settlement ponds, industrial objects, and the general urban system). Because of the observed ground changes the area requires continuous monitoring to analyse and assess the influence of the now ended mining on the present-day state of the ground and land development. For this purpose a detailed spatial database of the mines, geology, land use and development, geodetic networks and their measurements have been required.

4 Development of the deformation information system

The system's database and the modelling, data mining and visualisation modules have been developed and implemented in the ESRI ArcGIS software environment. Their development and functionalities are described below. The remaining two components have been developed with the Geomodeller software (geological model) and artificial neural networks (spatial data classification module) and integrated with the DIS.

4.1 The DIS database

The primary source of information for the database and development of the three-dimensional geometrical model of the underground workings include mine plans, geological and mining documentations. The existing cartographic materials cover the last 200 years of mining operations (since the beginning of the 19th century). These maps, scales 1 : 1000–1 : 5000, have been scanned, registered in the DIS coordinate system (PUWG 1992) and digitised to vector format. This

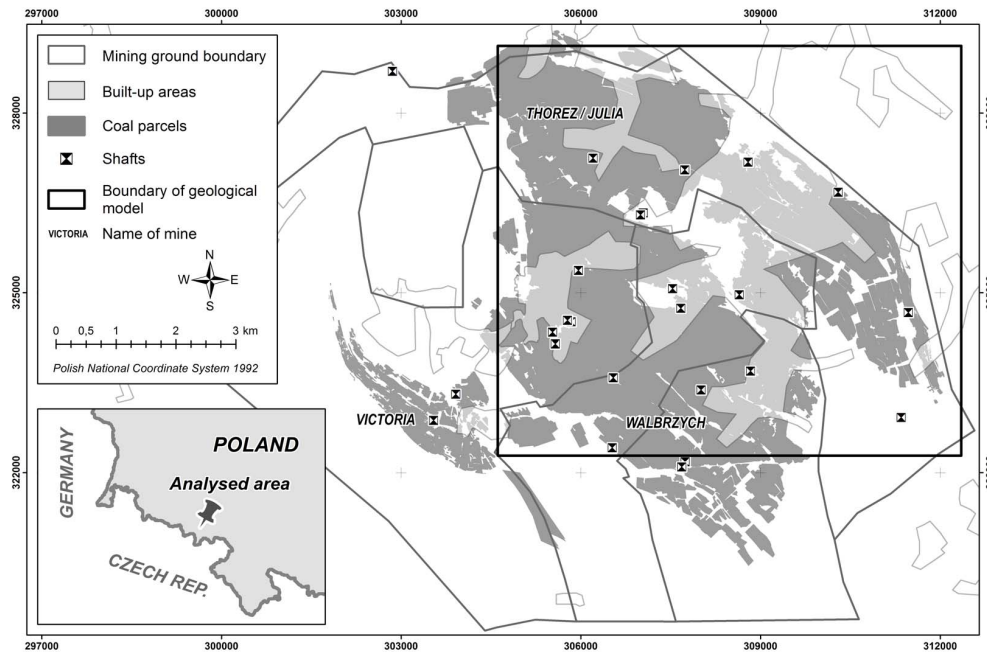


Figure 2. Location of the former Walbrzych coal mines (Blachowski and Milczarek, 2011).

provided information on the geometry and location of coal levels and underground workings. Attribute data obtained from the mine plans included the mining system used and the time of the coal extraction. The geological documentations provided information on the geological and the geotechnical parameters. The other important data source includes the surveying logs with location of the geodetic benchmarks and the results of periodic levelling measurements. Topographic maps and aerial photographs provide information on land use and surface development over the years (1800–present). In addition, information on surface infrastructure damage is collected. The general structure of the system's database is shown in Table 1. Only the core data sets have been listed. Detailed information on this part of the system can be found in Blachowski (2008). An important part of the database system is the product module that stores all of the feature classes representing results of spatial data analyses and results of analyses performed with external applications and imported to DIS. The structure of the database is open and can be expanded if necessary.

4.2 The geological model

The geological model of the Walbrzych coal basin in the part shown in Fig. 2 has been developed with the aim to obtain three-dimensional information on the geological structure in the former mining-grounds area and to use it to augment studies of natural and anthropogenic processes associated with mining and its effects on the ground surface. Because of the limitations of GIS in modelling 3-D objects, a specialised Geomodeller software (Calcagno et al., 2008) has

been used for this purpose. It is a software application for advanced 3-D geological modelling. The preprocessing tasks associated with data preparation and postprocessing tasks associated with model visualisation and integration have been done with the GIS software.

Data for the geological model included geological and mining maps (scale 1 : 5000) and 10 geological cross sections. The geological model has been developed based on the equipotential field theory (Lajaunie et al., 1997; Chiles et al., 2004; McInerney et al., 2005; Calcagno et al., 2008). The theory assumes that the geological model is a combination of three types of data: geological formations, the limiting surfaces and the fault surfaces cutting through them (Lajaunie et al., 1997). In this theory two assumptions must be met, the boundaries between geological formations in given locations and the spatial orientation of the particular layers are known. The model development has been divided into three parts. The first one concerned identification of the spatial extent of the model. This extent has been determined by availability of the data and the arrangement of the geodetic networks (GPS (global positioning system) and levelling) (Blachowski et al., 2009). The area of the model ($7.2 \text{ km} \times 6.7 \text{ km} \times 0.8 \text{ km}$) covers approx. 49 km^2 (about half of the total area of the former mining grounds). The second stage concerned development of the model using the geostatistical kriging function. Estimation of the spatial range of geological layers has been based on a cokriging function; an expansion of kriging used for multivariate data modelling. Cokriging is an unbiased estimator that allows calculation of the mean root square error in geostatistical data sets (McInerney et al., 2005). It has the

Table 1. The general structure of the DIS database.

Data set group	Data set subject	Type/geometry	Main attributes	Comments
Mining	Coal production levels	3-D polygons	Area, volume, thickness, mining system, time of activity (years)	Each level for each mine in a separate feature class
	Underground workings	3-D polygons, polylines, points	–	Underground drifts, shafts, protection pillars, etc.
	Surface mining infrastructure	2-D polygons and points	Name, status, function	Industrial objects and sites, waste dumps and settlement ponds
Geology	Geology	3-D polygons, polylines		Geological formations, tectonic faults and discontinuities
Geodesy	Geodetic networks	2-D points and polylines	ID, class	Location of geodetic benchmarks, GPS stations and levelling lines
	Geodetic measurements	Tabular data	ID, measured elevation, measurement time	
Reference data module	Road and railway system	2-D polylines		Boundaries of mining grounds and administrative units
	River network			
	Land use	3-D polygons		
	Administration	2-D polygons and polylines	Name, type	
	Infrastructure damage locations	Vector/2D points	Type, description, image	
Source data module	DEM	Raster data, TIN data	Spot elevation	Digital elevation model
	Mine plans	Raster data	–	Scanned documents
	Topographic maps		–	Source raster data sets
	Aerial images		–	Source raster data sets
Product module	Derivative data sets	Vector/raster		Feature classes and raster files with results of analyses

following form (1) (Calcagno et al., 2008):

$$T^*(p) - T^*(p_0) = \sum_{\alpha=1}^M u_{\alpha} \left(T(p_{\alpha}) - T(p'_{\alpha}) \right) + \sum_{\beta=1}^N v_{\beta} \frac{\partial T}{\partial u_{\beta}} (p_{\beta}), \quad (1)$$

where $T(p)$ is the scalar function of any point $p = (x, y, z)$ in 3-D space, $T^*(p) - T^*(p_0)$ is the increment between two points (p_0 and p), u_{α} is the primary data (variable) weight, and v_{β} is the secondary data (variable) weight.

The model contains, from the top to the bottom, the Upper Carboniferous formations in the form of the Zacler, the Bialokamienskie, and the Walbrzyskie layers. The last two layers contain coal levels (30 and 48, respectively). The bottom part of the model is made up of the Lower Carboniferous Kulm deposits. The general three-dimensional view of the model is shown in Fig. 3. The top boundary of the model is made up by the ground surface digital elevation model (DEM) and the bottom boundary has been set at -800 m below the sea level. The height coordinate system is the Kronsztadt 1986 system. In the last stage, the accuracy of the modelled geological objects has been verified. The verifica-

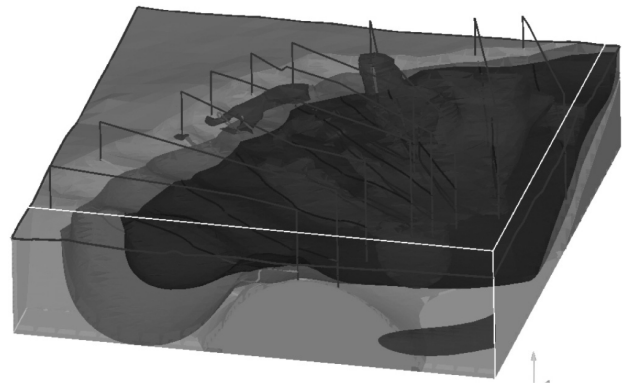


Figure 3. The three-dimensional numerical, geological model for the part of the former mining area shown with the black box in Fig. 2.

tion process has been based on the comparison of the calculated extent of the selected coal levels and tectonic faults with the available mine plans and geological maps. In addition, the calculated values of the slope of particular geological layers and the coal levels have been checked with the available documentations. The methodology of the model development is shown in Fig. 4.

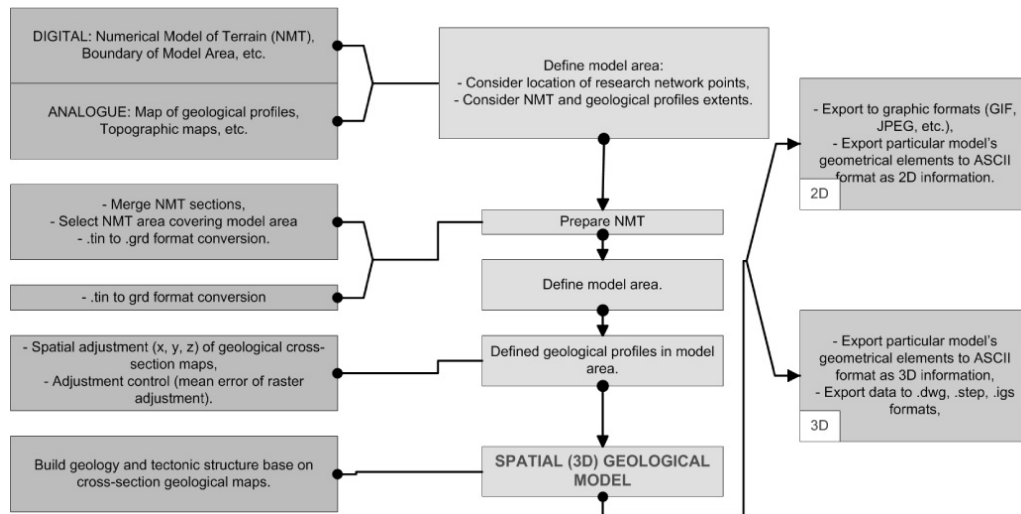


Figure 4. The generalised procedure of developing the spatial geological model (Milczarek, 2011).

The integration of the spatial geological model, as a whole or a selected part of the model, with mine plans, and other spatial information is carried out through exporting data to the shapefile format and loading them into the DIS database.

4.3 The spatial data mining module

With the aim to automate data query and data extraction procedures used in studies of mining-ground deformations interactive applications based on the visual basic for applications (VBA) programming language, ESRI ArcObjects platform (Burke, 2003) and the Microsoft .Net framework have been developed. The application is available as a toolbar that can be added to the graphical user interface of the ArcGIS software. It contains tools that enable data exploration in the DIS databases using the concept of the knowledge discovery in database (KDD) (Frawley et al., 1992). The data exploration tools include the find and selection operations that use any of the following criteria: mining system type, time of mining criteria, and location (Fig. 5). In response to the input criteria (e.g. long-wall with pneumatic fill mining system) the system selects and highlights coal parcels meeting the given criterion or criteria and returns a report. The results allow analysing and assessing the use of a given mining system, extent of mining, volume of extracted material as a function of time in a given coal production level or an area (multiple production levels).

4.4 The spatial data modelling module

With the same aim to automate complex and repeated spatial analysis procedures data geoprocessing models using the ArcToolbox application and the Python language scripting have been prepared based on the GIS data management functions and spatial data modelling functions including the map algebra concept (Tomlin, 2008). This method of spatial data processing generates new spatial data (i.e. map layers) based on input spatial data and numerical operations performed on them (Heywood et al., 2006). The spatial data are regarded as spatial variables and the applied cartographic functions are equivalent to algebraic operations (Tomlin, 2008).

The models developed in the DIS for deriving new spatial data based on the data stored in the geodatabase are available as a toolbar that can be added to the graphical user interface of the ArcGIS software or as geoprocessing models in the ArcToolbox application. The geoprocessing models use a sequence of algebraic operations realised on vector and raster data sets. The following spatial data analysis operations are available on the additional toolbar: extract, slope, aspect and depth.

The *extract* model returns the area and volume of coal parcels mined, percentage of each mining system used and average value of surface subsidence inside boundaries of a user-defined rectangle.

The *slope* model calculates inclination of a given coal production level. This operation requires conversion of 3-D vector data to TIN (triangulated irregular network) representing elevation of the coal level above sea level and calculation of inclination. The results are returned as a raster whose cells represent value of slope.

The *aspect* model calculates the direction of slope and works in the same way as the slope tool.

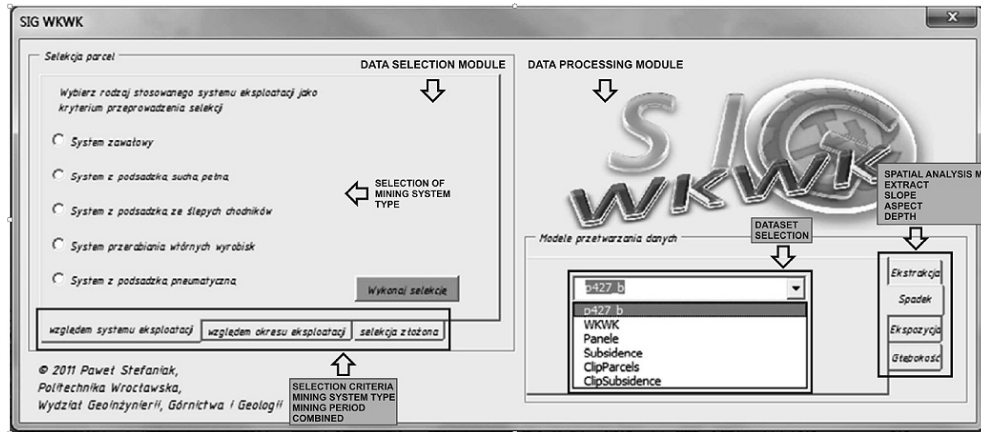


Figure 5. The spatial data analysis application in the deformation information system.

The *depth* model calculates the depth of a selected coal production level below the ground surface. The raster surface representing depth of a coal level is calculated as a difference of the DEM and the raster with elevation of this coal level.

The other analytical functions for facilitating deformation analyses developed in the DIS are available as geoprocessing models and scripts. These are vertical and horizontal subsidence surface, deformation parameter surfaces (tilt, curvature, and horizontal strain) and the mining-ground category classifications.

The *vertical displacement surface model* calculates the continuous subsidence field from the scattered discrete measurement points (geodetic benchmarks) using the spline and the kriging interpolation functions. These models use the standard tools available in the GIS software. However, the subsidence surface is calculated for the optimised interpolation parameters; that is, those that generate the smallest estimation errors based on the results of cross-validation (Hofierka et al., 2007).

The *horizontal displacement surface model* calculates the continuous horizontal displacement field taking into consideration its non-linear characteristics. First the continuous displacement fields in the *x* and *y* directions are calculated using the above-mentioned interpolation functions and the cross-validation method for estimation of the best-fitting interpolation surface. Then the final horizontal displacement field surface is obtained by combination of the displacement fields in the *x* and *y* directions. The input data for this interpolation are the results of periodic GPS satellite observations (the measured horizontal displacements).

The *tilt parameter* model uses the subsidence surface as the spatial variable input to calculate the continuous surface representing the tilt parameter (the first derivative of the subsidence surface).

The *curvature parameter* model uses the subsidence surface as the spatial variable input to calculate the continu-

Table 2. Risk classification of mining grounds (after Popiolek, 2009).

Mining ground category	Tilt T [mm m^{-1}]	Radius of curvature K [km]	Horizontal strain ϵ [mm m^{-1}]
0	$T \leq 0.5$	$40 \leq R $	$ \epsilon \leq 0.3$
I	$0.5 < T \leq 2.5$	$20 \leq R < 40$	$0.3 < \epsilon \leq 1.5$
II	$2.5 < T \leq 5$	$12 \leq R < 20$	$1.5 < \epsilon \leq 3$
III	$5 < T \leq 10$	$6 \leq R < 12$	$3 < \epsilon \leq 6$
IV	$10 < T \leq 15$	$4 \leq R < 6$	$6 < \epsilon \leq 9$
V	$15 < T$	$ R < 4$	$9 < \epsilon $

ous surface representing the curvature parameter (the second derivative of the subsidence surface).

The *strain parameter* model uses the continuous horizontal displacement field surface to calculate the continuous surface representing the horizontal strain parameter.

The resulting raster surfaces store the values of each parameter that are used as input spatial variables to assign a mining-ground category (0 – least influence of mining to V – greatest influence of mining) using the Polish classification given for example in Popiolek (2009). The mining-ground category in terms of each parameter is given in Table 2.

An algorithm for calculation of the tilt and curvature parameters is shown in Fig. 6.

4.5 The spatial data classification module

We believe that the use of self-organising maps (SOM) and weighted regression methods in the research of mining grounds allow identifying and analysing the relationships between possible mining-ground deformation factors and the observed surface subsidence. This approach is associated with the process of multi-contextual extraction of information from the database and ultimately acquiring knowledge on the present and future state of the ground based on the

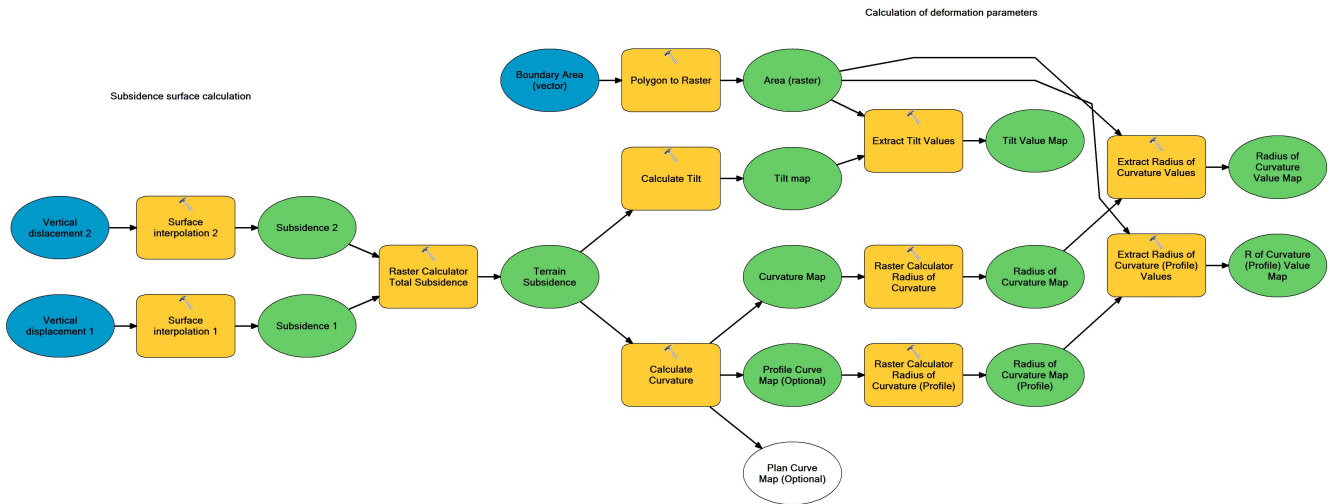


Figure 6. Diagram of the geoprocessing model for the calculation of the tilt and radius of curvature parameters of the subsidence surface.

analysis of these factors. This information is associated with the factors having influence on the deformation of mining grounds, presence of certain regularities in the data and existence of hidden characteristics of the deformation process. Thus, through construction of a behaviour model as a system of time-varying parameters, supported by a statistically reasonable set of examples, a better understanding of this phenomenon and prediction of deformation areas are possible. The spatial nature of this problem calls for the use of GIS technology.

The models for deriving spatial data from the DIS geodatabase used as input variables for SOM classifications with neural networks (in external software) and geographically weighted regression analyses (GWR) (in GIS software) are the coal level thickness, the mining system, the time of mining, depth below the ground and the slope. These models divide the analysed area into uniform cells of a given dimension, e.g. 100 m × 100 m, and assign values of the particular variable to the cells. The two example algorithms used to obtain layers representing the mining system parameter and the depth below the ground parameter are given in Fig. 7. The methodology is similar for the remaining procedures. In the first one shown in Fig. 7, the vector polygon data is converted to integer raster data where the raster pixels are assigned values based on the values of the mining system attribute from the attribute table. The pixels falling outside the geometrical extent of the coal parcels are assigned a no-data value. The raster value attribute table (text codes) is then reclassified to numerical values, e.g. the long-wall and caving mining system is assigned the value of 1 and the other systems 2, 3, and so on. The reclassified raster may be converted to point-vector data for further analyses. In the second procedure shown in Fig. 7, a DEM surface is created from the input vector polygon data representing the mined coal parcels in a given coal level. The DEM is converted to a raster that is

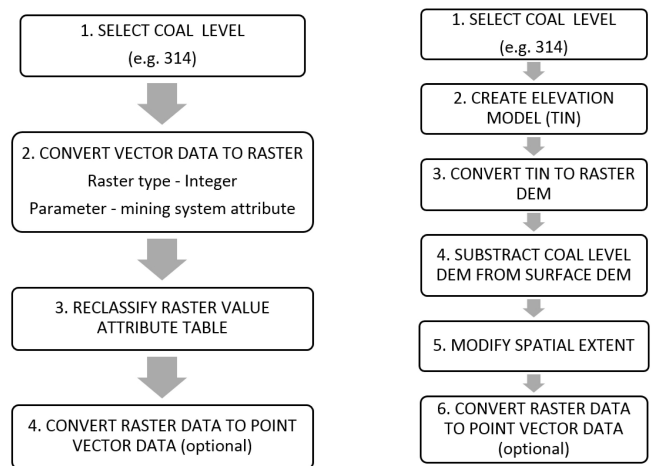


Figure 7. The simplified procedures to extract data for analyses, left – mining system variable, right – depth below the ground variable.

then subtracted from the DEM representing the surface, using the map algebra subtract operation. The resultant raster storing depth below the surface values is modified to the spatial extent of the initial vector polygon data again using map algebra operations. The data can then be converted to point-vector data, the points representing values of individual pixels.

These models automate data extraction from the DIS and data preprocessing for the purpose of various classifications such as self-organising maps and analyses using geographically weighted regression functions to examine spatial relationships between the input variables and the observed surface subsidence.

The three-dimensional representation of the variables extracted for any coal production level is shown in Fig. 8.

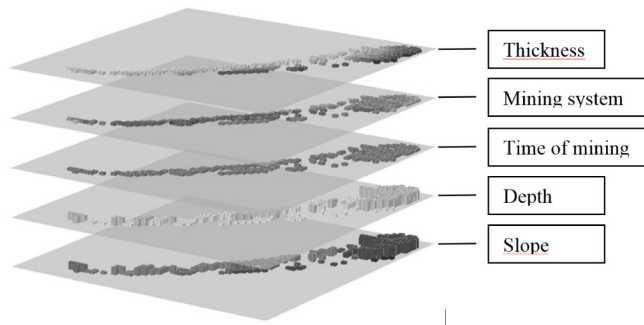


Figure 8. Three-dimensional visualisation of the coal thickness, mining system, time of mining, depth below the ground and slope variables derived for a selected coal production level and used for spatial data classification.

4.6 The data collection module

The geodetic and remote sensing measurement techniques used for collecting deformation and other data can be, in our opinion, regarded as another module of the system. The electronic data transfer applications allow integrating the results of geodetic measurements with the DIS database. The measurement results used in the described case include archival and current precise and technical levelling realised in various parts of the Walbrzych area, GPS satellite observations carried out in the Walbrzych monitoring network, as well as part of the GEOSUD (GEodynamics of SUDety Mountains) geodynamic network (Kontny et al., 2006).

4.7 The visualisation module

Another product of integrating and analysing the geometrical and attribute data collected in the database is an interactive, three-dimensional model of the underground mines in the Walbrzych area. The DIS allows two- and three-dimensional visualisations and interactive animations of the geometry of underground workings and production levels, as well as of the geological model. These models allow the development of smaller, local models for any part of the former mining area, as well as the development of vertical profiles. Example visualisations are shown in Figs. 9 and 3. The first one presents classification of the coal parcels according to the mining system used for a selected part of the Thorez mine. The second one shows a numerical geological model of part of the former mining area. The three-dimensional models are used as data sources for numerical modelling and for performing spatial analyses related to deformation studies. The other forms of data visualisation are described in Sect. 5.

PART OF THE FORMER THOREZ COAL MINE

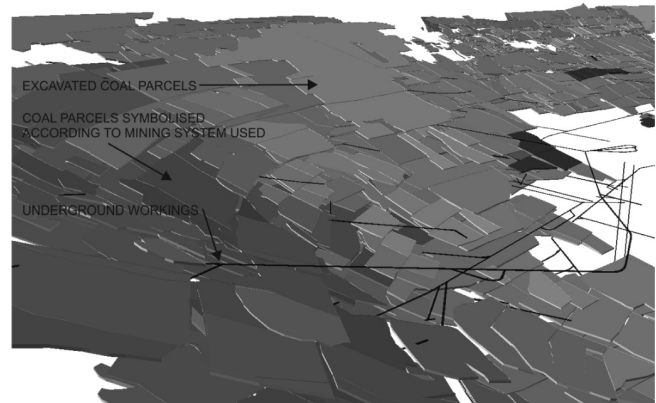


Figure 9. Three-dimensional visualisation of the selected underground workings and coal parcels classified according to the mining system used.

5 Application and discussion

The principal purpose of the DIS is to support and facilitate the studies of mining-related ground deformations in Walbrzych's former mining area with connection to regional geodynamics. These studies concern the period of mining (i.e. up to 1996), as well as the present-day (after the end of the mining activity) monitoring of the condition of the ground and its impact on the surface infrastructure based on repeated geodetic measurements in relation to the mining, geological and other data integrated in the system. Abstracts of publications in Polish presenting development and enhancement of the DIS have been included in Appendixes A and B, respectively.

In addition, the mining and the geological models are used in finite element method modelling of ground deformations and deformation progress predictions and the system is used for visualisations of these numerical analyses (Blachowski et al., 2009; Milczarek, 2011; Blachowski and Milczarek, 2011).

Examples of other types of analyses whose results are used in studies of the ground deformation caused by mining activity are given below for the case of a single coal production level (#424/425) and inside a protective pillar established around two mining shafts.

The first one concerns analysis of mining activity in time in a given area. The results are shown graphically in Fig. 10, which presents the time of mining of the generalised coal parcels and the sequence of mining presented with arrows. In this case mining in the analysed area took place from 1824 to 1929.

The second one concerns analysis of the slope of the coal production level (#424/425) within boundaries of the protective pillar of the two mining shafts. The results have been shown graphically in Fig. 11. In the presented case the slope of the analysed coal level varies from 10 to 50°.



Figure 10. Mining activity analysis for the 424/425 coal production level within the boundaries of the protection pillar.



Figure 11. Slope analysis for the 424/425 coal production level within the boundaries of the protection pillar.

The third one concerns correlation of the predicted total subsidence (Kowalski and Jedrzejec, 2000) with the depth and the slope of the #424/425 production level. The result of this analysis is shown in Fig. 12. The long-wall and caving mining system was used in this case.

The system streamlines tasks associated with extraction of information from the database and provides and integrates proprietary tools for spatial analyses related to calculation, assessment and prediction of mining-terrain deformation. It is also used to calculate historical changes of the

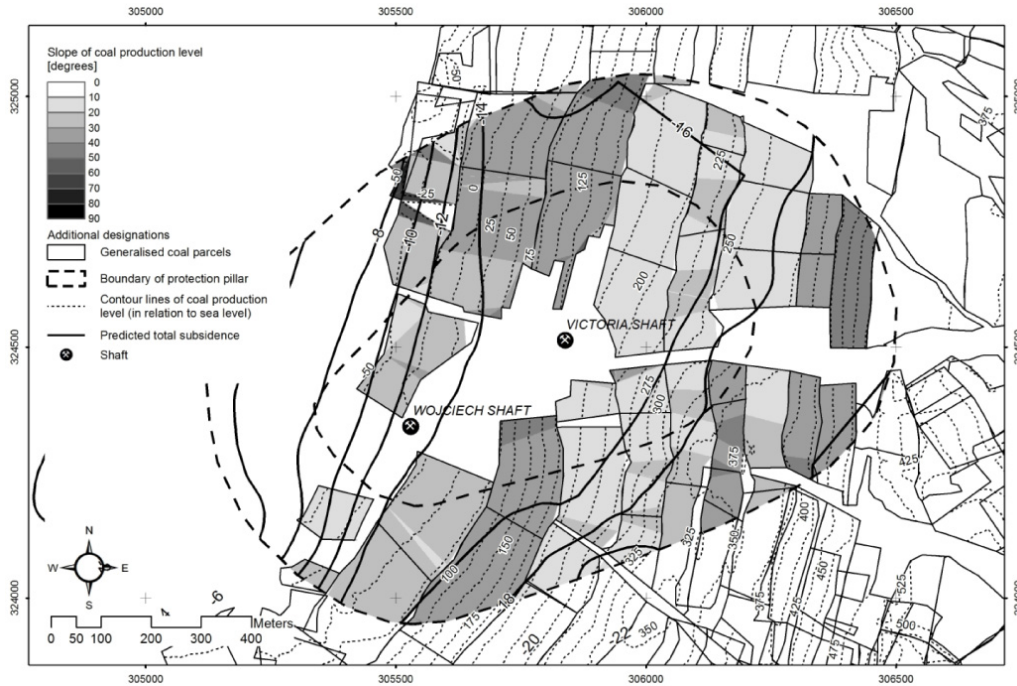


Figure 12. Subsidence analysis for the 424/425 coal production level within the boundaries of the protection pillar.

mining-terrain surface based on interpolated digital elevation models of old topographical surfaces (Blachowski and Milczarek, 2014) or assess the weight of mining-terrain deformation factors such as thickness, depth and slope of the extracted coal deposits, as well as model mining-terrain subsidence in areas where surface elevation change measurements are unavailable with the geographically weighted regression (GWR) method based on tools available in GIS software suites. The latter have been presented in Blachowski et al. (2014).

6 Conclusions

The structure and methodology of developing the deformation information system, an indispensable means to support and facilitate mining-ground deformations studies, has been described. The presented approach uses a modular system structure that includes the following components: geodetic data collection, spatial data mining, spatial data modelling, geological modelling, spatial data classifications, and visualisations. The system integrates spatial and attributive data, as well as utilises interactive three-dimensional geological and mine models used for mining-ground deformation studies. The DIS provides spatial data extraction and visualisation functions and analytical functions for studies of the spatial and temporal changes of the mining activity in the past 200 years and the present-day monitoring of ground deformation in relation to the locations of the former mines. The selected analytical operations allow interpolation and visu-

alisation of mining subsidence surfaces including continuous horizontal displacement fields, calculation of the surface deformation parameters, i.e. tilt, radius of curvature and horizontal strain, classification of mining-ground categories based on the accepted (in Poland) mining-ground classifications for any identified point in space, preprocessing and postprocessing of data for advanced analyses such as the spatial data classifications and numerical (FEM) modelling of ground deformations. In it also used to calculate and analyse historical mining terrain deformation and predict surface subsidence based on analysis of mining deformation factors with geographically weighted regression.

The development of the DIS has been shown on the example of the coal mines in the Walbrzych area in SW Poland. Further work on the system includes incorporation of remote sensing data, expansion of the analytical modules in spatial data classifications and spatial statistics related, for example, to recorded mining-damaged locations.

Appendix A: Abstract of the paper *Geographical information system of the Walbrzych underground coal mines a way to improve effectiveness and accuracy of mining grounds deformation studies*

Deformation studies of mining grounds involve gathering and working with large, complicated and diversified data sets. Most of this data has specified spatial reference. Managing and processing of such data is streamlined with GIS. In this paper, the structure of digital, geographical databases and associated attribute information used for deformation studies of the abandoned Walbrzych coal mines mining grounds has been presented. Functions and applications of the geoinformation system developed for supporting deformation studies and interpreting their results have been described and examples have been given.

Appendix B: Abstract of the paper *An enhancement of the geoinformation system for the former Walbrzych coal mines*

The paper describes the methodology of updating the geoinformation system of former underground hard coal mines. The purpose of the system concerns data management and data analysis for the support of studies of surface behaviour in the area of the Walbrzych part of the Lower Silesia Coal Basin. The process of developing, with the use of ArcObjects environment, an application facilitating selected procedures of data exploration and spatial analyses, in the system, based on the map algebra principles has been discussed. The functionality of analytical tools has been demonstrated on the example of analyses of mining activity carried out in the “Barbara” coal field of the “Victoria” mine. These include exploration and selection of coal parcels according to the given criteria (depth below surface, slope), calculation of mining conditions of coal parcels and progress of underground mining operation in time. In the article a concise review of the use of geographical information systems in studies of the state of grounds under the influence of mining activity presented in national and international literature has also been given.

Acknowledgements. The development of the system has been financed by the National Science Centre Project UMO-2012/07/B/ST10/04297 Development of a numerical method of mining ground deformation modelling in complex geological and mining conditions, and the scientific project no. S30035 Development of the model of secondary deformations on mining grounds carried out at the Institute of Mining Engineering of the Wrocław University of Technology (Poland).

Edited by: N. Kerle

Reviewed by: M. Mergili and one anonymous referee

References

- Blachowski, J.: Geographical Information System of the Walbrzych Underground Coal Mines a Way to Improve Effectiveness and Accuracy of Mining Grounds Deformation Studies, *Scientific Papers of the Institute of Mining Engineering, Wrocław University of Technology*, 34, 17–27, 2008 (in Polish).
- Blachowski, J. and Ellefmo, S.: Numerical modelling of rock mass deformation in sublevel caving mining system, *Acta Geodyn. Geomater.*, 9, 379–388, 2012.
- Blachowski, J. and Milczarek, W.: Development and application of 3D geological model and geoinformation system for numerical modelling of ground deformations in abandoned underground coal mines, *Proceedings IAMG 2011 Conference*, 837–851, doi:10.5242/iamg.2011.0000, 2011.
- Blachowski, J. and Milczarek, W.: Analysis of surface changes in the Walbrzych hard coal mining grounds (SW Poland) between 1886 and 2009, *Geol. Q.*, 58, doi:10.7306/gq.1162, in press, 2014.
- Blachowski, J. and Stefaniak, P.: An enhancement of the geoinformation system for the former Walbrzych coal mines, *Scientific Papers of the Institute of Mining Engineering, Wrocław University of Technology*, 135, 5–21, 2012 (in Polish).
- Blachowski, J., Cacon, S., and Milczarek, W.: Analysis of post-mining ground deformations caused by underground coal extraction in complicated geological conditions, *Acta Geodyn. Geomater.*, 6, 351–357, 2009.
- Blachowski, J., Milczarek, W., and Grzempowski, P.: Analysis of Mining Terrain Deformation Characteristics with Deformation Information System, *EGU General Assembly 2014, Geophysical Research Abstracts*, 16, EGU2014-7949, 2014.
- Bogusz, J., Klos, A., Grzempowski, I. P., and Kontny, B.: Modeling Velocity Field in Regular Grid in the Area of Poland on the Basis of the Velocities of European Permanent Stations, in press, *Pure Appl. Geophys.*, doi:10.1007/s00024-013-0645-2, 2013.
- Burke, R.: Getting to Know ArcObjects: Programming ArcGIS with VBA Programming ArcGIS with VBA, ESRI Press, 2003.
- Calcagno, P., Chilcs, J. P., Courrioux, G., and Guillen, A.: Geological modelling from field data and geological knowledge: Part I. Modelling method coupling 3D potential-field interpolation and geological rules, *Phys. Earth Planet. In.*, 171, 147–157, 2008.
- Chiles, J. P., Aug, C., Guillen, A., and Lees, T.: Modelling the geometry of geological units and its uncertainty in 3D from structural data: The potential-field method, *Orebody Modelling and Strategic Mine Planning*, 313–320, 2004.
- Choi, J. K., Kim, K. D., Lee, S., and Won, J. S.: Application of a fuzzy operator to susceptibility estimations of coal mine subsidence in Taebaek City, Korea, *Environ. Earth Sci.*, 59, 1009–1022, 2010.
- Chrzanowski, A., Blachowski, J., and Chrzanowski, A.: An assessment of mining on surface infrastructure in complex geological and mining conditions with the use of GIS methods, in: *IV Konferencja Bezpieczeństwo i ochrona obiektów budowlanych na terenach gorniczych*, Ryto, 17–19 October 2012 (in Polish).
- Doležalová, H., Kajzar, V., Souček, K., and Staš, L.: Evaluation of vertical and horizontal movements in the subsidence depression near Karvina, *Acta Geodyn. Geomater.*, 3, 355–361, 2010.
- Frawley, W. F., Pietatsky-Shapiro, G., and Matheus, Ch. J.: Knowledge Discovery in Databases: An Overview, *AI Magazine*, 13, 57–70, 1992.
- Heywood, I., Cornelius, S., and Carver, S.: An Introduction to Geographical Information System, 3rd Edn., Pearson, Prentice Hall, Essex, England, 2006.
- Hofierka, J., Cebecauer, T., and Šúri, M.: Optimisation of Interpolation Parameters Using Cross-validation, in: *Digital Terrain Modelling, Lecture Notes in Geoinformation and Cartography*, edited by: Peckham, R. J. and Jordan, G., Springer, 67–82, 2007.
- Kim, K. D., Lee, S., and Oh, H. J.: Prediction of ground subsidence in Samcheok City, Korea using artificial neural networks and GIS, *Environ. Geol.*, 58, 61–70, 2009.
- Kontny, B., Bosy, J., and Borkowski, A.: The use of permanent and epoch GPS coordinate time series in geodynamic investigations of Sudetes area – proposal of a new approach, *Acta Geodyn. Geomater.*, 3, 31–38, 2006.
- Kowalczyk, K., Rapinski, J., and Mroz, M.: Analysis of Vertical Movements Modelling Through Various Interpolation Techniques, *Acta Geodyn. Geomater.*, 7, 399–409, 2010.
- Kowalski, A. and Jędrzejec, E.: Ground surface threats caused by former mining activity and closure of mines, in: *Mining activity and surface protection. Experiences from Walbrzych mines*, edited by: Kowalski, A., Central Mining Institute, 343–366, 2010 (in Polish).
- Lalajunie, Ch., Courrioux, G., and Manuel L.: Foliation fields and 3D cartography in geology: Principles of a method based on potential interpolation, *Math. Geol.*, 29, 571–584, 1997.
- Lee, S., Park, I., and Choi, J. K.: Spatial Prediction of Ground Subsidence Susceptibility Using an Artificial Neural Network, *Environ. Manage.*, 49, 347–358, 2012.
- Malinowska, A.: A fuzzy inference-based approach for building damage risk assessment on mining terrains. *Eng. Struct.*, 33, 163–170, 2011.
- McInerney, P., Guillen, A., and Courrioux, G.: Building 3D geological models directly from the data? A new approach applied to Broken Hill Australia, *Digital Mapping Techniques*, Baton Rouge, Louisiana, 24–27 April 2005, Association of American State Geologists and the United States Geological Survey, 119–130, 2005.

- Milczarek, W.: Analysis of ground surface changes after mining exploitation in the chosen region of the former Walbrzych basin, Ph.D. thesis, Wrocław University of Technology, Poland, 2011 (in Polish).
- Piatek, E. and Piatek, Z.: Summary of the history of the Lower Silesia coal mining 1434–2000, available at: <http://www.boehm-chronik.com/bergbau/gorn1434-2000.pdf>, last access: 24 August 2012, 2002.
- Popielek, E.: Ochrona terenów gorniczych, Wydawnictwa AGH, Kraków, Poland, 2009 (in Polish).
- Tomlin, C. D.: Cartographic Modelling, in: Encyclopaedia of Geographic Information Science, edited by: Kemp, K. K., Sage, 2008.