

## An easy ultrasonographic diagnosis of pneumonia in Emergency room

Bahjat Barakat, Raffaele Pezzilli

Department of Emergency, Department of Internal Medicine, Sant'Orsola-Malpighi Hospital, Bologna, Italy

Lung bedside ultrasound is a reliable, rapid and non-invasive technique in particular the rapidity of execution of this examination will appear very relevant for the emergency and critical area, especially if it is compared to the time required to obtain the results of radiologic surveys.

emergency care journal - organizzazione, clinica, ricerca • Anno VIII numero II • Giugno 2012 • www.ecj.it

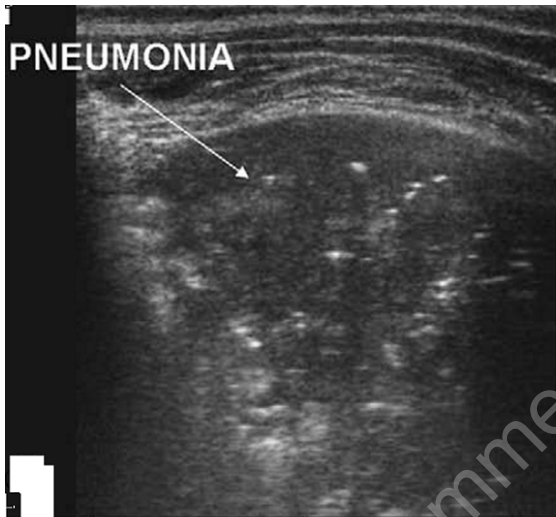


Fig. 1. Ultrasonographic (US) appearance of irregular subpleural hypoechoic area with many hyperechoic spots, evidence of dynamic air bronchograms.

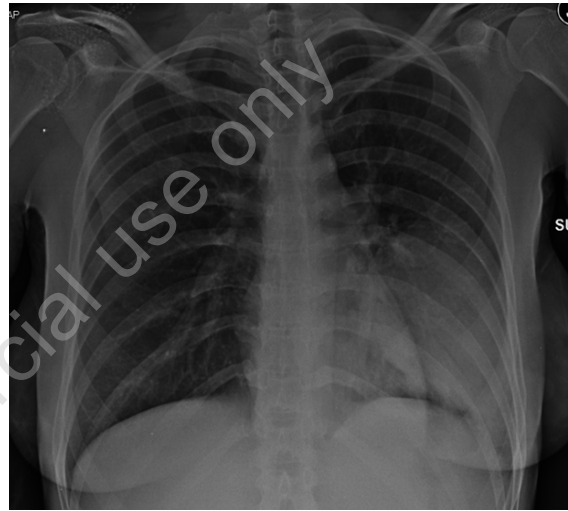


Fig. 2. Chest x-ray showing parenchymal focal opacity with blurred margin higher confirming the US diagnosis of pneumonia.



Fig. 3. CT scan extensive parenchymal consolidation with air bronchogram aspects confirming both US and chest x-ray results.