

This is a postprint of:

Zhao, G., Chen, B., Uieda, L., Liu, J., Kaban, M. K., Chen, L., Guo, R. Efficient 3D large-scale forward-modeling and inversion of gravitational fields in spherical coordinates with application to lunar mascons. *Journal of Geophysical Research: Solid Earth*. doi:10.1029/2019jb017691.

To view the published open abstract, go to <https://doi.org/10.1029/2019jb017691>

Data and code are available at <https://doi.org/10.6084/m9.figshare.7300523.v6>

Efficient 3D large-scale forward-modeling and inversion of gravitational fields in spherical coordinates with application to lunar mascons

Guangdong Zhao^{1,2}, Bo Chen¹, Leonardo Uieda³, Jianxin Liu¹, Mikhail. K. Kaban^{2,4}, Longwei Chen⁵, Rongwen Guo¹

¹ School of Geosciences and Info-Physics, Central South University, Changsha 410083, China

² Helmholtz-Centre Potsdam - GFZ German Research Centre for Geosciences, Potsdam, Germany.

³ Department of Earth Sciences, SOEST, University of Hawai'i at Manoa, Honolulu, USA

⁴ Schmidt Institute of Physics of the Earth RAS, Moscow, Russia

⁵ School of Earth Sciences, Guilin University of Technology, Guilin 541006, China

Corresponding authors: Bo Chen (bochen@csu.edu.cn), Jianxin Liu (ljsx6666@126.com)

Key Points:

- An efficient forward modeling algorithm with kernel matrix equivalence is developed
- Computation time and memory requirement of the algorithm are significantly reduced
- 3D density distributions of the Imbrium and Serenitatis basins are obtained

Abstract

Efficient 3D large-scale forward-modeling and inversion of gravitational fields in spherical coordinates is developed for 3D large-scale gravity inversion problems. 3D Gauss-Legendre quadrature (GLQ) is used to calculate the gravitational fields of mass distributions discretized into tesseroids. Equivalence relations in the kernel matrix of the forward-modeling are exploited to decrease storage and computation time. The numerical tests demonstrate that the computation time of the proposed algorithm is reduced by approximately two orders of magnitude, and the memory requirement is reduced by N'_λ times compared with the traditional GLQ method, where N'_λ is the number of the model elements in the longitudinal direction. These significant improvements in computational efficiency and storage make it possible to calculate and store the dense Jacobian matrix in 3D large-scale gravity inversions. The equivalence

relations can be applied to the Taylor series method or combined with the adaptive discretization to ensure high accuracy. To further illustrate the capability of the algorithm, we present a regional synthetic example. The inverted results show density distributions consistent with the actual model. The computation took about 6.3 hours and 0.88 GB of memory compared with about a dozen days and 245.86 GB for the traditional 3D GLQ method. Finally, the proposed algorithm is applied to the gravity field derived from the latest lunar gravity model GL1500E. 3D density distributions of the Imbrium and Serenitatis basins are obtained, and high-density bodies are found at the depths 10–60 km, likely indicating a significant uplift of the high-density mantle beneath the two mascon basins.

1 Introduction

A fast and accurate forward modeling algorithm for computation of the gravity responses at a set of observation points for a given subsurface density distribution is required for many geophysical applications. First of all, it is used to estimate the gravity effect of some predefined density structure in both regional and global levels, as is commonly doing for the crustal models based on existing seismic data [e.g., *Kaban and Mooney*, 2001; *Kaban et al.*, 2004, 2016a]. It is also widely applied in the topographic and isostatic correction, and for geoid determination [*Forsberg and Tscherning*, 1997; *Heiskanen and Moritz*, 1967; *Hirt et al.*, 2010; *Kaban et al.*, 2016b]. The direct computations of the gravity effect are also used in some types of the gravity inversion methods. This is typically employed for imaging subsurface density anomalies for mining problems [e.g., *Kamm et al.*, 2015; *Li and Oldenburg*, 1998, 2003; *Martinez et al.*, 2013; *Mosher and Farquharson*, 2013; *Nabighian et al.*, 2005] and investigating crust-mantle structures of planetary interiors [e.g., *Alvarez et al.*, 2012; *Braitenberg and Ebbing*, 2009; *Liang et al.*, 2014; *Neumann et al.*, 2004; *Wieczorek et al.*, 2013; *Wieczorek and Phillips*, 1998].

For computation of the gravity effect in a Cartesian coordinate system, subsurface mass distributions are typically discretized into right rectangular prisms since they provide a relatively simple and useful way to approximate complicated density sources without “holes” [*Caratori Tontini et al.*, 2009]. High-efficiency forward modeling methods in Cartesian coordinates are developed to evaluate the Newton’s volume integral [*Blakely*, 1995], such as the Fast Fourier Transform method [*Bhattacharyya and Navolio*, 2010; *Parker*, 2010; *Shin et al.*, 2006; *Caratori Tontini et al.*, 2009], Gauss-FFT method [*Wu and Tian*, 2014; *Zhao et al.*, 2018], and adaptive multilevel fast multipole method [*Ren et al.*, 2017].

In spherical coordinates, subsurface mass distributions are typically discretized into tesseroids rather than rectangular prisms [*Anderson*, 1976] to consider the curvature of the Earth when tackling large-scale problems. With the fast development of the satellite gravity gradiometry, global gravity data with high resolution become available, which makes the interpretations on both regional and global scales feasible [*Braitenberg*, 2015; *Reguzzoni et al.*, 2013]. However, the Newton’s integral in spherical coordinates cannot be solved analytically except for the case of a homogeneous spherical shell and a spherical cap along the polar axis [*Grombein et al.*, 2013; *Mikuska et al.*, 2006]. Numerical integration

methods have been used to solve this problem, including the 2D, 3D Gauss-Legendre quadrature (GLQ) [Asgharzadeh *et al.*, 2007; Wild-Pfeiffer, 2008], the Taylor-series expansion [Deng *et al.*, 2016; Grombein *et al.*, 2013; Heck and Seitz, 2007] and approximation of tesseroids by other forms, which induce nearly the same gravity field, but which effect can be easily computed (e.g., Kaban *et al.*, 2004, 2016a). Also, there are widely used direct methods, which operate in the spherical harmonic domain providing sufficient accuracy of the computed geoid, gravity field and its derivatives (e.g., Root *et al.*, 2016).

The Taylor-series expansion produces accurate results at low latitudes. However, the accuracy decreases rapidly toward to the polar regions, as the tesseroids degenerate into approximately triangular shapes. Furthermore, singularities exist at the poles in the modeling of the gravitational gradients [Grombein *et al.*, 2013]. The 3D GLQ methods approximate Newton's volume integral by a weighted sum of the effects of point masses. The accuracy of the integration can be improved by increasing the number of point masses at the expense of an exponential increase in computation time. Ku [1977] proposed an empirical criterion to numerically evaluate the vertical component of the gravitational acceleration of right rectangular prisms, in which the distance between point masses should be greater than the distance to the computation point. Li *et al.* [2011] designed an algorithm to enforce the criterion proposed by Ku [1977]. Recently, Uieda *et al.* [2016] published an open-source software package *Tesseroids* and a modified version of the adaptive discretization of Li *et al.* [2011], providing a sufficiently accurate way to evaluate the Newton's integral by the 3D GLQ method. However, the computational efficiency of the forward modeling algorithm is still a severe issue in large-scale 3D gravity inversion. The memory requirement for storing the kernel matrices (i.e., the Jacobian matrix) is another severe problem. Previous works that tackle this issue generally involve iterative algorithms [e.g., Uieda and Barbosa, 2012] or some form of lossy compression (e.g., wavelet transform and compression [Li and Oldenburg, 2003], moving footprints [Barnes and Barraud, 2012; Barnes and Lumley, 2011], and adaptive data down-sampling [Foks *et al.*, 2014]).

In this study, an efficient forward modeling method for tesseroids is proposed to significantly decrease the computational time as well as the memory requirement. The numerical integration is performed by the 3D Gauss-Legendre integration [Wild-Pfeiffer, 2008]. We carry out numerical investigations to verify the performance of our method and to provide comparisons for computation time and memory requirements. Subsequently, we apply the algorithm to a 3D gravity inversion of the latest lunar gravity model GL1500E [Konopliv *et al.*, 2014].

2 Method

2.1 Gravitational forward modeling using 3D GLQ

On both regional and global scales, the source region is commonly divided into many small regular spherical elements, i.e., tesseroids. The total gravity effect of the source region is obtained by superposition

of the individual source effects. As shown in Fig. 1, the tesseroid is a mass element bounded by three pairs of surfaces: a pair of concentric spheres (r_1, r_2), a pair of meridional planes (λ_1, λ_2), and a pair of coaxial circular cones defined by the parallels (φ_1, φ_2). For a computation point P outside the tesseroid, the formulas of the gravitational fields with respect to the local north-oriented coordinate system are given by Grombein *et al.* [2013] (following the notation of Uieda *et al.* [2016]):

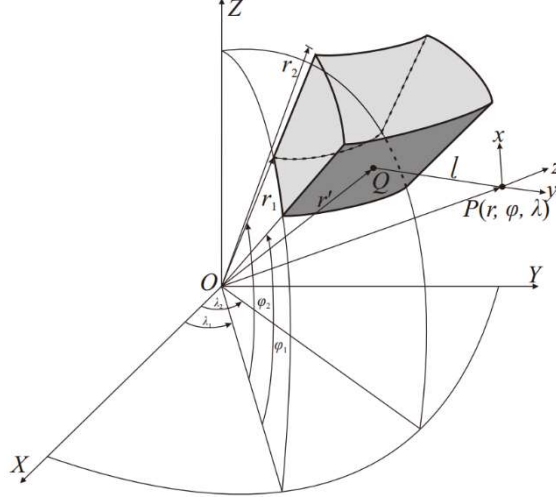


Figure 1. The geometry of a spherical tesseroid.

$$V(r, \varphi, \lambda) = G\rho \int_{r_1}^{r_2} \int_{\varphi_1}^{\varphi_2} \int_{\lambda_1}^{\lambda_2} \frac{1}{\ell} \kappa \cdot dr' d\phi' d\lambda', \quad (1)$$

$$g_\alpha(r, \varphi, \lambda) = G\rho \int_{r_1}^{r_2} \int_{\varphi_1}^{\varphi_2} \int_{\lambda_1}^{\lambda_2} \frac{\Delta_\alpha}{\ell^3} \kappa \cdot dr' d\phi' d\lambda', \quad (2)$$

$$g_{\alpha\beta}(r, \varphi, \lambda) = G\rho \int_{r_1}^{r_2} \int_{\varphi_1}^{\varphi_2} \int_{\lambda_1}^{\lambda_2} \left(\frac{3\Delta_\alpha \Delta_\beta}{\ell^5} - \frac{\delta_{\alpha\beta}}{\ell^3} \right) \kappa \cdot dr' d\phi' d\lambda', \quad (3)$$

where $\alpha, \beta \in (x, y, z)$; ρ is the density of the tesseroid; G is the gravitational constant; $\delta_{\alpha\beta}$ is Kronecker's delta ($\delta_{\alpha\beta} = 1$ if $\alpha = \beta$ and $\delta_{\alpha\beta} = 0$ if $\alpha \neq \beta$), and

$$\begin{aligned} \Delta_x &= r' [\cos \phi \sin \phi' - \sin \phi \cos \phi' \cos(\lambda' - \lambda)] \\ \Delta_y &= r' \cos \phi' \sin(\lambda' - \lambda) \\ \Delta_z &= r' \cos \psi - r \\ \kappa &= r'^2 \cos \phi' \\ \ell &= \sqrt{r'^2 + r^2 - 2r'r \cos \psi} \\ \cos \psi &= \sin \phi \sin \phi' + \cos \phi \cos \phi' \cos(\lambda' - \lambda). \end{aligned} \quad (4)$$

Since the integrations concerning λ' and ϕ' comprise elliptical integrals in Eqs. (1) ~ (3), they cannot be solved in a closed analytical form [Grombein *et al.*, 2013]. Here we follow Asgharzadeh *et al.* [2007] and Uieda *et al.* [2016] to perform the numerical integration using the 3D GLQ.

The GLQ for 3D volume integrals in Eqs. (1) ~ (3) can be written in a more general form as [Uieda *et al.*, 2016]

$$\int_{r_1}^{r_2} \int_{\phi_1}^{\phi_2} \int_{\lambda_1}^{\lambda_2} f(r', \phi', \lambda') dr' d\phi' d\lambda' \approx A \sum_i^I \sum_j^J \sum_k^K W_i^{r'} W_j^{\lambda'} W_k^{\phi'} f(\hat{r}_i', \hat{\lambda}_j', \hat{\phi}_k'), \quad (5)$$

where $A=(r_2-r_1)(\lambda_2-\lambda_1)(\phi_2-\phi_1)/8$; I, J and K are the numbers of Gaussian nodes in the radial, longitudinal and latitudinal directions, respectively; and

$$\begin{aligned} \hat{r}_i' &= \frac{r_2 - r_1}{2} r_i' + \frac{r_2 + r_1}{2} \\ \hat{\lambda}_j' &= \frac{\lambda_2 - \lambda_1}{2} \lambda_j' + \frac{\lambda_2 + \lambda_1}{2} \\ \hat{\phi}_k' &= \frac{\phi_2 - \phi_1}{2} \phi_k' + \frac{\phi_2 + \phi_1}{2}, \end{aligned} \quad (6)$$

are the Gaussian nodes scaled to the actual coordinates within the tesseroid; $W_i^{r'}$, $W_j^{\lambda'}$, $W_k^{\phi'}$ and r_i' , λ_j' , ϕ_k' are i -th, j -th, k -th Gaussian weights and nodes within the range of $[-1, 1]$. The commonly used Gaussian weights and nodes for the Gauss-Legendre quadrature formulae up to 5 orders are given by Wild-Pfeiffer [2008]. As we can see from Eq. (5), the GLQ method approximates the 3D volume integrals by a weighted sum of the point mass effects $f(\hat{r}_i', \hat{\phi}_k', \hat{\lambda}_j')$ [Uieda *et al.*, 2016]. In this paper, we employ 2 Gaussian nodes in each direction.

2.2 Equivalence of Kernel Matrix

The forward modeling of gravitational fields using the above 3D GLQ method is time-consuming, especially when the high order Gaussian quadrature is applied to guarantee high modeling accuracy or when the model mesh and computational points are dense. In this section, we develop an efficient forward modeling algorithm using regular tesseroid meshes.

As shown in Fig. 2, we divide the subsurface source region into N_r' segments along the radial direction, N_ϕ' and N_λ' in the latitudinal and longitudinal directions, respectively, defining a total cell number of $N_{tess} = N_r' \times N_\phi' \times N_\lambda'$. For each tesseroid, its geometric center is $(r_i', \phi_n', \lambda_m')$ with an equal mesh interval of Δr , $\Delta\phi$, and $\Delta\lambda$, respectively. The density of each tesseroid is assumed to be constant. The observations are assumed to be on a spherical patch located at the height of r_0 and distributed on a regular grid of $N_{obs} = N_\phi \times N_\lambda$.

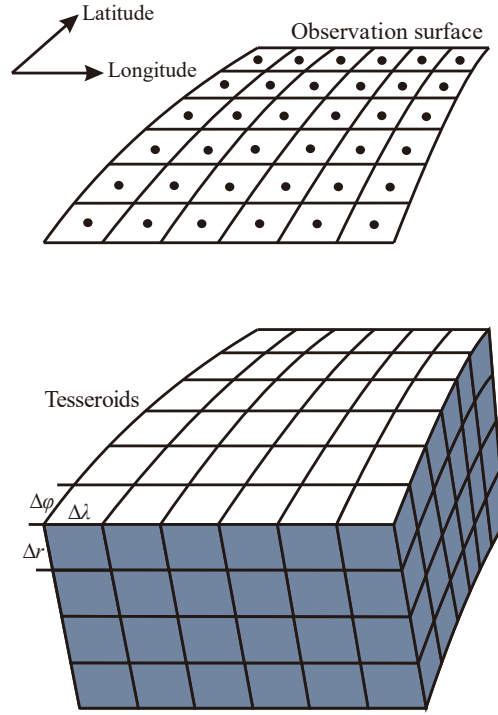


Figure 2. The discretization of the source region and the observation surface. Δr , $\Delta\varphi$, and $\Delta\lambda$ are mesh interval in radial, latitude and longitude directions.

Then the gravitational potential, accelerations and gradient tensor at an observation point $(r_0, \varphi_q, \lambda_p)$ can be written as the form of a summation of each tesseroid

$$V(r_0, \varphi_q, \lambda_p) = \sum_{l=1}^{N'_r} \sum_{m=1}^{N'_\lambda} \sum_{n=1}^{N'_\varphi} \rho_{lnm} K_v(r_0, \varphi_q, \lambda_p; r'_l, \varphi'_n, \lambda'_m), \quad (7)$$

$$g_\alpha(r_0, \varphi_q, \lambda_p) = \sum_{l=1}^{N'_r} \sum_{m=1}^{N'_\lambda} \sum_{n=1}^{N'_\varphi} \rho_{lnm} K_\alpha(r_0, \varphi_q, \lambda_p; r'_l, \varphi'_n, \lambda'_m), \quad (8)$$

$$g_{\alpha\beta}(r_0, \varphi_q, \lambda_p) = \sum_{l=1}^{N'_r} \sum_{m=1}^{N'_\lambda} \sum_{n=1}^{N'_\varphi} \rho_{lnm} K_{\alpha\beta}(r_0, \varphi_q, \lambda_p; r'_l, \varphi'_n, \lambda'_m), \quad (9)$$

where $p=1, 2, \dots, N_\lambda$, and $q=1, 2, \dots, N_\varphi$; ρ_{lnm} is the density of the tesseroid numbered (l, n, m) ; and

$$K_v(r_0, \varphi_q, \lambda_p; r'_l, \varphi'_n, \lambda'_m) = G \int_{r'_l-0.5\Delta r}^{r'_l+0.5\Delta r} \int_{\lambda'_m-0.5\Delta\lambda}^{\lambda'_m+0.5\Delta\lambda} \int_{\varphi'_n-0.5\Delta\varphi}^{\varphi'_n+0.5\Delta\varphi} \frac{1}{\ell} \kappa \cdot dr' d\varphi' d\lambda', \quad (10)$$

$$K_{\alpha} \left(r_0, \varphi_q, \lambda_p; r'_l, \varphi'_n, \lambda'_m \right) = G \int_{r'_l - 0.5\Delta r}^{r'_l + 0.5\Delta r} \int_{\lambda'_m - 0.5\Delta \lambda}^{\lambda'_m + 0.5\Delta \lambda} \int_{\varphi'_n - 0.5\Delta \varphi}^{\varphi'_n + 0.5\Delta \varphi} \frac{\Delta_{\alpha}}{\ell^3} \kappa \cdot dr' d\phi' d\lambda', \quad (11)$$

$$K_{\alpha\beta} \left(r_0, \varphi_q, \lambda_p; r'_l, \varphi'_n, \lambda'_m \right) = G \int_{r'_l - 0.5\Delta r}^{r'_l + 0.5\Delta r} \int_{\lambda'_m - 0.5\Delta \lambda}^{\lambda'_m + 0.5\Delta \lambda} \int_{\varphi'_n - 0.5\Delta \varphi}^{\varphi'_n + 0.5\Delta \varphi} \left(\frac{3\Delta_{\alpha}\Delta_{\beta}}{\ell^5} - \frac{\delta_{\alpha\beta}}{\ell^3} \right) \kappa \cdot dr' d\phi' d\lambda', \quad (12)$$

are the kernel functions of the gravitational potential, accelerations and gradient tensor. Here (r, φ, λ) in Eq. (4) is replaced by $(r_0, \varphi_q, \lambda_p)$. The kernel functions depend only on the volume of the calculated tesseroid and the geometric distance between the tesseroid and the observation point.

Eqs. (7) ~ (9) can be written in the matrix form as

$$\mathbf{K}_v \cdot \boldsymbol{\rho} = \mathbf{V}, \quad (13)$$

$$\mathbf{K}_{\alpha} \cdot \boldsymbol{\rho} = \mathbf{g}_{\alpha}, \quad (14)$$

$$\mathbf{K}_{\alpha\beta} \cdot \boldsymbol{\rho} = \mathbf{g}_{\alpha\beta}, \quad (15)$$

where $\boldsymbol{\rho}$ represents the density vector of the tesseroids with the dimension N_{tess} ; \mathbf{V} , \mathbf{g}_{α} , and $\mathbf{g}_{\alpha\beta}$ are the vectors containing the forward results with the dimension N_{obs} ; \mathbf{K}_v , \mathbf{K}_{α} and $\mathbf{K}_{\alpha\beta}$ are the kernel matrices with the dimension $N_{obs} \times N_{tess}$, in which the elements are given by Eqs. (10) ~ (12).

When a fine discretization is used, the kernel matrices in Eqs. (13) ~ (15) are large. For example, in a simple global gravity inversion, the Earth is discretized into $N_{\varphi} = N'_{\varphi} = 180$, $N_{\lambda} = N'_{\lambda} = 360$ and $N'_r = 10$ (i.e., partitioning the Earth into $1^{\circ} \times 1^{\circ}$ in the latitudinal and longitudinal directions and ten layers in the radial direction). The memory requirement for storing each kernel matrix is approximately 168 GB in the single precision or 336 GB in the double precision floating point numbers. Furthermore, the calculation of the above kernels is time-consuming.

Fortunately, if the tesseroid model is discretized into a regular mesh and the computation points are on a regular grid of a constant height that aligns with the tesseroid mesh (as shown in Fig. 2), a series of equivalence relations can be exploited in the kernel matrix. The amplitudes of the elements in the kernel matrix resulting from the same sizes of tesseroids and same computation distances are equal. Henceforth, we will refer to these relations as the equivalence of kernel matrix.

In view of the relation with $(\lambda' - \lambda)$ in Eq. (4), the kernel functions in Eqs. (10) ~ (12) can be written as

$$K_v \left(r_0, \varphi_q, \lambda_p; r'_l, \varphi'_n, \lambda'_m \right) = K_v \left(r_0, \varphi_q, r'_l, \varphi'_n, \lambda'_m - \lambda_p \right), \quad (16)$$

$$K_{\alpha} \left(r_0, \varphi_q, \lambda_p; r'_l, \varphi'_n, \lambda'_m \right) = K_{\alpha} \left(r_0, \varphi_q, r'_l, \varphi'_n, \lambda'_m - \lambda_p \right), \quad (17)$$

$$K_{\alpha\beta} \left(r_0, \varphi_q, \lambda_p; r'_l, \varphi'_n, \lambda'_m \right) = K_{\alpha\beta} \left(r_0, \varphi_q, r'_l, \varphi'_n, \lambda'_m - \lambda_p \right). \quad (18)$$

According to Eqs. (1) ~ (4), K_v , K_x , K_z , K_{xx} , K_{xz} , K_{yy} , and K_{zz} are even functions of $(\lambda' - \lambda)$. Also, the meshes of both source region and observation surface are in an equal interval and the observation points align with the center of model meshes. Taking K_v as an example, we have

$$K_v \left(r_0, \varphi_q, r'_l, \varphi'_n, \lambda'_m - \lambda_p \right) = K_v \left(r_0, \varphi_q, r'_l, \varphi'_n, \lambda'_p - \lambda'_m \right), \quad (19)$$

and we define this relation as a swapping equivalence.

To be more explicit, we take one layer of tesseroids in Fig. 3 as an example to illustrate the swapping equivalence. For one layer of tesseroids, the variables r_0 and r'_l in the radial direction in Eq. (19) can be omitted. For simplicity, we use $K(q, p; n, m)$ to represent the gravity response on the observation point $P(r_0, \varphi_q, \lambda_p)$ produced by the tesseroid $Q(r'_l, \varphi'_n, \lambda'_m)$. As shown in Fig. 3, the kernel elements (for K_v , K_x , K_z , K_{xx} , K_{xz} , K_{yy} , and K_{zz}) along the crossed dashed red (or blue) lines have equal values.

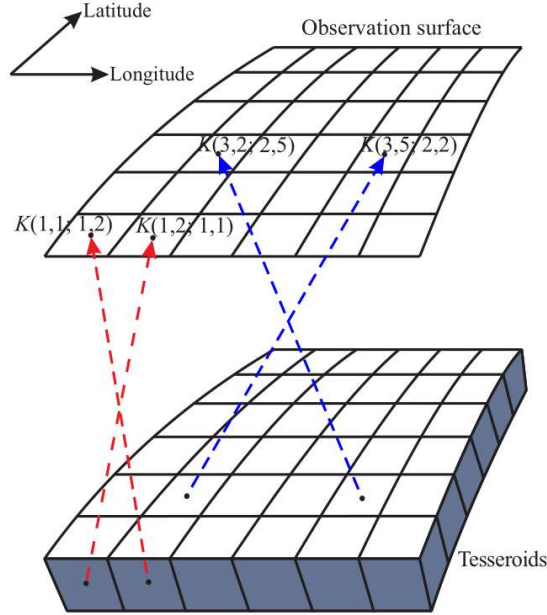


Figure 3. The swapping equivalence of the kernel matrix. A model with 6×6 observation grid and one 6×6 layer of tesseroids is taken as an example. E.g., the kernel element $K(3,2;2,5)$ represents the gravitational response on the observation point $P(r_0, \varphi_3, \lambda_2)$ produced by the tesseroid $Q(r'_2, \varphi'_2, \lambda'_5)$ with unit density. The kernel elements represented by the two crossed dashed red (or blue) lines are equivalent (for K_v , K_x , K_z , K_{xx} , K_{xz} , K_{yy} , and K_{zz}) or minus signs (for K_y , K_{xy} , and K_{yz}).

On the other hand, when $m \leq p$, we also have

$$\begin{aligned} & K_v(r_0, \varphi_q, r'_l, \varphi'_n, \lambda'_m - \lambda_p) \\ &= K_v(r_0, \varphi_q, r'_l, \varphi'_n, \lambda'_1 + \lambda'_{m-1} - \lambda_p) = K_v(r_0, \varphi_q, r'_l, \varphi'_n, \lambda'_1 - \lambda_{p-m+1}), \end{aligned} \quad (20)$$

and we name this relation as shifting equivalence. As shown in Fig. 4, the kernel elements for the gravitational potential, accelerations and gradient tensor are equal along parallel dashed red (or blue) lines.

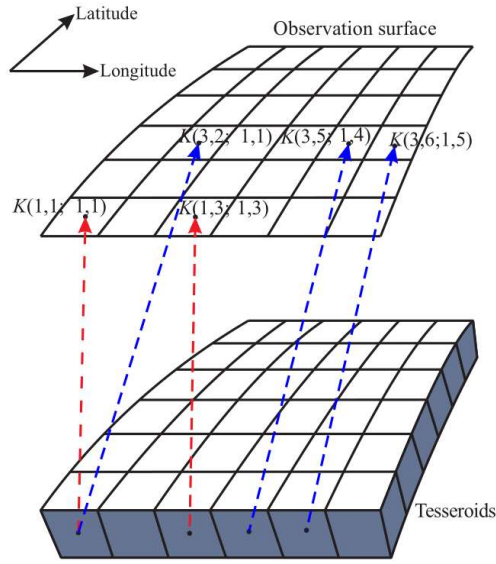


Figure 4. The shifting equivalence of kernel matrix. The model is the same as Fig. 3. The kernel elements represented by the two parallel dashed red lines are equivalent, and the kernel elements indicated by the three parallel dashed blue lines are equal as well.

When $m > p$, we can first use the swapping equivalence of Eq. (19), then adopt the shifting equivalence,

$$\begin{aligned} & K_v(r_0, \varphi_q, r'_l, \varphi'_n, \lambda'_m - \lambda_p) = K_v(r_0, \varphi_q, r'_l, \varphi'_n, \lambda'_p - \lambda_m) \\ &= K_v(r_0, \varphi_q, r'_l, \varphi'_n, \lambda'_1 + \lambda'_{p-1} - \lambda_m) = K_v(r_0, \varphi_q, r'_l, \varphi'_n, \lambda'_1 - \lambda_{m-p+1}). \end{aligned} \quad (21)$$

Combining both, the shifting equivalence and the swapping equivalence, we obtain the equivalence of the kernel matrix for the gravitational potential as

$$K_v(r_0, \varphi_q, r'_l, \varphi'_n, \lambda'_m - \lambda_p) = K_v(r_0, \varphi_q, r'_l, \varphi'_n, \lambda'_1 - \lambda_{|p-m|+1}). \quad (22)$$

As for K_y , K_{xy} and K_{yz} , since they are odd functions of $(\lambda' - \lambda)$, we should add a symbolic function relative to Eq. (22). Taking K_y as an example, we have

$$K_y(r_0, \varphi_q, r'_l, \varphi'_n, \lambda'_m - \lambda_p) = \text{signum} \cdot K_y(r_0, \varphi_q, r'_l, \varphi'_n, \lambda'_1 - \lambda_{|p-m|+1}), \quad (23)$$

where

$$\text{signum} = \begin{cases} 1.0 & \text{if } \lambda_p = \lambda'_m \\ \frac{\lambda_p - \lambda'_m}{\text{abs}(\lambda_p - \lambda'_m)} & \text{if } \lambda_p \neq \lambda'_m \end{cases}$$

Using this novel equivalence strategy, we just need to calculate the kernel elements $K_v(r_0, r'_l, \varphi_q, \varphi'_n, \lambda'_1 - \lambda_p)$, $K_a(r_0, r'_l, \varphi_q, \varphi'_n, \lambda'_1 - \lambda_p)$, $K_{\alpha\beta}(r_0, r'_l, \varphi_q, \varphi'_n, \lambda'_1 - \lambda_p)$ produced by the tesseroids $Q(r'_l, \varphi'_n, \lambda'_1)$ in the first longitudinal column, and then the rest of the kernel elements can be obtained by the equivalence relations (Eq. (22) or (23)), which yield a great improvement in computational efficiency. In the meantime, the memory requirement for storing these kernel vectors is reduced to $1/N'_\lambda$ of the original one. For more general cases, the source region may consist of several layers, and then the kernel matrix for multi-layer tesseroids can be calculated by repeating the above one-layer process. Moreover, the equivalence of the kernel matrix presented in this section can be equally applied to the Taylor series expansion method [Heck and Seitz, 2007].

The equivalence of the kernel matrix can be incorporated in the adaptive discretization algorithm [Uieda *et al.*, 2016] to increase accuracy of 3D GLQ. Using the adaptive discretization algorithm, any tesseroid is subdivided into smaller ones if the observation point is close to the tesseroid until all the newly meshed tesseroids meet the given distance-size ratio (D) [Uieda *et al.*, 2016]. Because of the combination of the kernel matrix equivalence, the adaptive discretization strategy needs to be applied only to the tesseroids in the first longitudinal column. After the adaptive discretization, the kernel elements produced by the original tesseroids are calculated by superposition directly, with no use of the equivalence of kernel matrix strategy in this column. Thus, the kernel elements for the first column can be evaluated with high accuracy by the adaptive discretization algorithm, and for the rest of the kernel elements, the gravity effect can be obtained with the same accuracy using the kernel matrix equivalence.

In the above formulations, the spherical tesseroids are used to discretize subsurface mass distributions by applying the equivalence kernel matrix strategy. In most cases, the spherical approximation bounded by geocentric spherical coordinates yields sufficiently accurate results [Heck and Seitz, 2007], and this is also a reasonable approximation for regional gravity applications or for near-sphere planets [e.g., Liang *et al.*, 2014; Asgharzadeh *et al.*, 2007; Wild-Pfeiffer, 2008; Du *et al.*, 2015]. However, in terms of the Earth (or other ellipsoid planets), the non-sphericity effect may be significant and non-negligible. The

ellipticity of the Earth can be taken into account in the forward modeling by the ellipsoidal tesseroids with a latitude-dependent radius [Heck and Seitz, 2007]. The equivalence of the kernel matrix strategy is also valid when the ellipsoidal tesseroids with a latitude-dependent radius are used in the discretization.

2.3 3D Inversion in Spherical Coordinates

In this section, we introduce the application of the developed forward algorithm for 3D gravity inversion problems. Here the Tikhonov regularization method [Tikhonov and Arsenin, 1977] is used. This approach seeks to construct the simplest model by minimizing a data misfit function and a model objective function weighted by a regularization parameter,

$$\text{minimize } \Phi(\rho) = \Phi_d + \mu\Phi_m, \quad (24)$$

where Φ_d is the data misfit function, Φ_m is the model objective function, μ is the regularization parameter that determines the trade-off between Φ_m and Φ_d . The regulation parameter μ can be determined by the L-curve criterion [Calvetti et al., 2000; Hansen, 2001], for example.

We use a weighted squared L₂-norm data-misfit function similar to [Li and Oldenburg, 1998]

$$\Phi_d = \left\| \mathbf{W}_d (\mathbf{d}^{pre} - \mathbf{d}^{obs}) \right\|_2^2, \quad (25)$$

where $\mathbf{d}^{obs} = (d_1, \dots, d_N)^T$ is the observation data vector, \mathbf{d}^{pre} is the predicted data vector, $\mathbf{W}_d = \text{diag}\{1/\sigma_1, \dots, 1/\sigma_N\}$ is a diagonal data weight matrix, and σ_i is the uncertainty associated with the i -th datum.

To compensate the decay of sensitivity with depth, we use a normalized depth-weighted model objective function [Liang et al., 2014]

$$\begin{aligned} \Phi_m(\rho) = & \alpha_s \int_v \left[w(r')(\rho - \rho^{ref}) \right]^2 dv + \alpha_{r'} \int_v \left[\frac{\partial w(r')(\rho - \rho^{ref})}{\partial r'} \right]^2 dv \\ & + \alpha_{\varphi'} \int_v \left[\frac{\partial w(r')(\rho - \rho^{ref})}{r' \partial \varphi'} \right]^2 dv + \alpha_{\lambda'} \int_v \left[\frac{\partial w(r')(\rho - \rho^{ref})}{r' \cos \varphi' \partial \lambda'} \right]^2 dv, \end{aligned} \quad (26)$$

where α_s , $\alpha_{r'}$, $\alpha_{\varphi'}$ and $\alpha_{\lambda'}$ are the coefficients that affect the relative importance of different components in the objective function, $dv = r'^2 \cos \varphi' dr' d\varphi' d\lambda'$, ρ^{ref} is the reference model, and $w(r')$ is the depth weighting function in the radial direction

$$w(r') = \frac{r'}{r'_1(r_0 - r')} \quad (27)$$

where r_0 is the radius of the observations, r'_1 is the radius of the first layer tesseroid mesh.

In the data-misfit function (Eq. (25)), the improved forward algorithm introduced in previous sections is used to calculate the predicted gravity field d^{pre} . By minimizing Eq. (24), the inversion problem is transformed into a linear system of equations, which is solved by the conjugate gradient (CG) method [e.g., Pilkington, 1949; Purucker et al., 2000].

3 Numerical Examples

In order to test numerical performance of the proposed forward method, we perform synthetic tests on a spherical shell model to examine the computational efficiency and memory requirement. A synthetic regional model with known density distributions is also designed to demonstrate the practical application of the forward method in large-scale 3D gravity inversion.

3.1 Spherical Shell Model

According to the adaptive discretization algorithm used to improve the accuracy of the forward method, the original tesseroid is subdivided into smaller tesseroids as the computation point gets closer to it [Uieda et al., 2016]. Therefore, the altitude of the computation surface inversely affects the computation time. On the other hand, the number of tesseroids in the mesh directly influence the computation performance. In this section, we investigate the computational efficiency by comparing our algorithm with the software *Tesseroids* [Uieda et al., 2016] for different observation heights and tesseroid mesh numbers.

A homogenous spherical shell is employed as the reference model because it has analytical solutions along the polar axis [Grombein et al., 2013] and can be discretized into tesseroids perfectly. The spherical shell has the density 1000 kg/m^3 and thickness 100 km ranging from 6271 km to 6371 km (the Earth's radius). The shell is discretized into regular meshes along the horizontal directions with just one layer in the radial direction.

We first test the computational efficiency for different observation heights. The spherical shell is discretized into 180×360 tesseroids with an equal interval of 1° in both the latitudinal and longitudinal directions. The observation surface has the same discretization as the spherical shell. Its elevation ranges from 1 km to 250 km above the top surface of the spherical shell. The computation time of \mathbf{g}_z and \mathbf{g}_{zz} for different observation heights is shown in Figs. 5a, b. For convenience, the absolute computation time is normalized by the slowest calculation time, henceforth referred to as relative computation time.

As shown in Figs. 5a, b, the execution time of our optimized method is reduced by approximately two orders of magnitude compared to the method of Uieda et al. [2016]. The improved performance is achieved due to the use of kernel matrix equivalence. In this case, the increase in computational efficiency is ~ 50 times for \mathbf{g}_z and ~ 80 times for \mathbf{g}_{zz} compared with Uieda et al. [2016]. Another remarkable characteristic is that the computation time of \mathbf{g}_z for both methods does not vary significantly with the observation heights, while the computation time of \mathbf{g}_{zz} increases as the observation height decreases. To obtain accuracy with a maximum error of 0.1%, the distance-size ratio D of 8 is used for gravity gradients,

and 1.5 for the gravitational acceleration [*Uieda et al.*, 2016]. Therefore, the original model is subdivided into more tesseroids for g_{zz} , especially when the observation surface is relatively low.

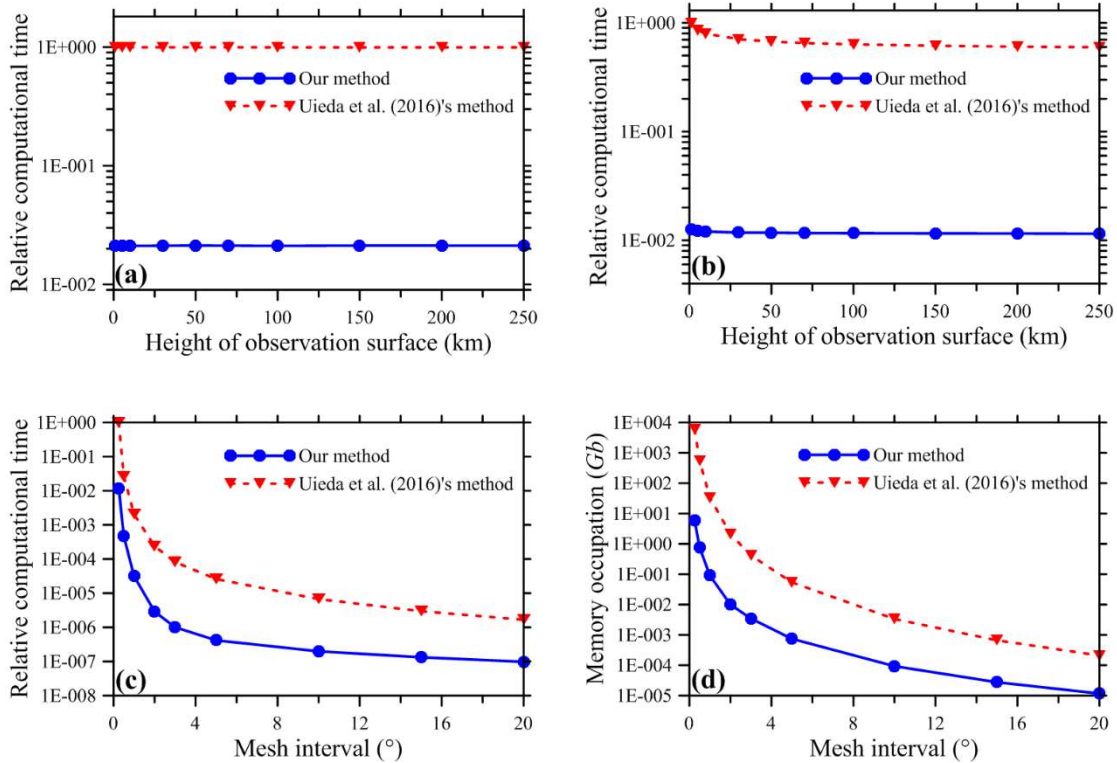


Figure 5. Comparison of the computation time and memory requirement of the proposed method and the method of *Uieda et al.* [2016]. The relative computation time of g_z (a) and g_{zz} (b) at different observation heights; (c) computation time and (d) memory requirement of g_{zz} varying with discretization size. The computation time is normalized by the slowest calculation.

We also investigated the computation time and memory requirement for g_{zz} in cases of different model size. The spherical shell was divided into small tesseroids by a set of intervals ranging from 0.25° to 20° . The observation surface is placed at 10 km height with the same discretization as the shell. Figs. 5c, d show the relative computation time and memory usage for computation of g_{zz} with different mesh intervals (i.e., the size of the discretization). Table 1 presents the statistics of the absolute computation time and memory occupation.

The results show that the computation time of both methods increases exponentially with the decrease of the discretizing interval (Fig. 5c and Table 1). However, for our method, the increase in computation time is more gentle compared with the method of *Uieda et al.* [2016], and the time cost is reasonable for the cases with the interval less than 1° . With the increase of the mesh numbers, the difference in computation time between two methods become more significant. As shown in Fig. 5c, the difference is about one order of magnitude for meshes with an interval greater than 5° , while two orders of magnitude for meshes with an interval less than 3° . As for large-scale 3D gravity inversion problems, the

discretization in depth normally implies more than one layer, and the inversion needs dozens or even hundreds of forward iterations, the improved performance is more evident and significant, which will be demonstrated in the next section.

Table 1. The statistics of the absolute computation time and memory occupation for computation of g_z with different mesh intervals. All the tests are carried out on a desktop with i7-4790k CPU, 16 GB memory.

Mesh interval ($^\circ$) / Grid number	Computation time		Memory occupation (GB)	
	Our optimized method	<i>Uieda et al.</i> [2016]'s method	Our optimized method	<i>Uieda et al.</i> [2016]'s method ^a
0.25 / 720×1440×1	11.4 h	~34.0 d ^b	5.97	8599.6
0.5 / 360×720×1	1596.6 s	25.5 h	0.75	537.48
1.0 / 180×360×1	108.8 s	2.0 h	0.09	33.59
2.0 / 90×180×1	10.0 s	829.1 s	0.01	2.10
3.0 / 60×120×1	3.5 s	284.5 s	3.46E-03	0.415
5.0 / 36×72×1	1.45 s	90.5 s	7.46E-04	0.054
10.0 / 18×36×1	0.69 s	23.5 s	9.33E-05	3.36E-03
15.0 / 12×24×1	0.46 s	10.3 s	2.76E-05	6.64E-04
20.0 / 9×18×1	0.34 s	5.8 s	1.17E-05	2.10E-04

^aThe method by *Uieda et al.* [2016] is not necessary to store the kernel matrix in forward modeling. The memory requirement is to store the kernel matrix (i.e., Jacobian matrix) for the applications in gravity inversion. For example, the total kernel elements for cases with the mesh interval of 0.25 $^\circ$ are 1.075×10^{12} (i.e., $720 \times 1440 \times 1 \times 720 \times 1440$), and the corresponding memory requirement is about 8599.6 GB in double precision floating point numbers (i.e., $1.075 \times 10^{12} \times 8$). ^bThe computation time is estimated according to the computation time of our method (11.4 hours) multiplying by the average increasing times (71.57) for the mesh intervals of 0.5 $^\circ$ ~3 $^\circ$. s: second; h: hours; d: day.

Another advantage of the new method is the low memory occupation as shown in Fig. 5d and Table 1. As mentioned above, it is not necessary to store the kernel matrix in a forward application. However, storing the dense Jacobian matrix is probably inevitable in an inverse method. With the equivalence of kernel matrix, the proposed algorithm reduces the memory requirement by N'_λ times when compared to the storage of the full kernel matrix, where N'_λ is the number of model elements in the longitudinal direction.

For the computation accuracy, Fig. 6 shows the maximum relative errors of g_z varying with the height elevation of the observation surface using the traditional 3D GLQ method, *Uieda et al.* [2016] method, and our method on the basis of the same spherical shell model as shown in Fig. 5a. The relative errors of all three methods decrease with the increase of the observation height. Owing to the use of the

adaptive discretization [Uieda *et al.*, 2016], the error for the proposed algorithm is exactly the same as that of Uieda *et al.* [2016]. The errors of these two methods are reduced by two orders of magnitude compared to the traditional method when the observation surface closes to the source region. This test demonstrates that the accuracy of the forward modeling is not affected by the use of the equivalence of kernel matrix.

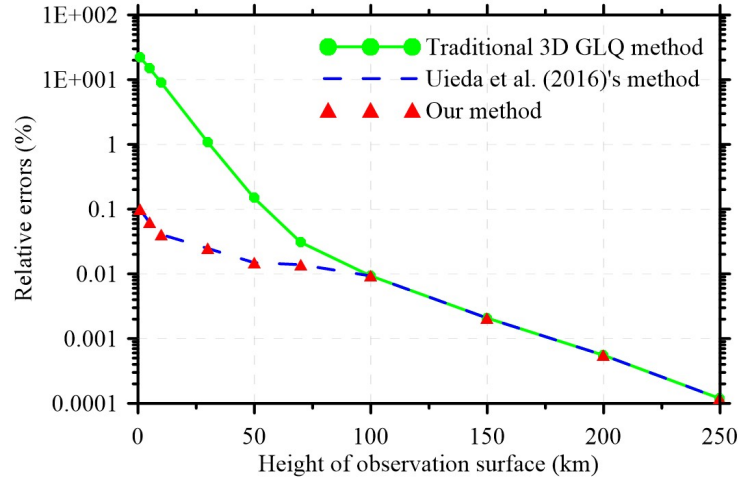


Figure 6. The relative errors varying with the height of observation surface. This model is the same as in Fig. 5.

3.2 Synthetic Mascon Model

In this section, we design a synthetic lunar mascon model with known density distributions to verify applicability of the new method for a large-scale 3D inversion. The model consists of two blocks with the same density contrast of 600 kg/m^3 (Fig. 7a). The model ranges from -35° to 35° longitude, 15° to 50° north latitude and 0 to 100 km in depth. This model region is discretized into a mesh of $280 \times 140 \times 20$ tesseroids with a spacing of 0.25° , 0.25° and 5 km in the longitudinal, latitudinal and radial directions, respectively. Li and Oldenburg [1996] suggested upward continuation of the observation data in the inversion to a constant height approximately equal to the width of the surface cells in the model.

Considering the cell size of the source model, the gravity anomalies used in the inversion are calculated at the height of 10 km above the reference radius of 1738 km (i.e., the lunar radius) by using the proposed forward algorithm. Gaussian random noise with zero mean and standard deviation of 1% of the maximum amplitude of the synthetic data is added to the gravity anomalies to simulate the observation errors (Fig. 7b).

We perform the inversion of the synthetic data using the inversion method described in section 2.3. The predicted data from the inversion model and the data residuals are shown in Figs. 7c, d. The inversion is performed using parameters of $\mu = 5.0 \times 10^2$ obtained from the L-curve shown in Fig. 8, $\alpha_s = 1.0 \times 10^{-9}$, $\alpha_r = 1.0 \times 10^{-7}$, $\alpha_{\varphi} = \alpha_{\lambda} = 1.47 \times 10^{-8}$ and $\rho^{ref} = 0$ (i.e. no reference model is used). As shown in Fig. 7d, the inversion residuals are small. The inverted density distributions are shown in Fig. 9. The estimated density

distribution is able to recover the right locations of the two anomalous bodies in the actual model (Fig. 9), which demonstrates the validity and capability of the inversion algorithm. Note that the recovered density of the anomalies ($\sim 300 \text{ kg/m}^3$) is significantly lower than the true one (600 kg/m^3) due to vertical smearing to a greater depth. This is because the gravity data only do not resolve the radial density distribution, which entirely depends on the applied radial weighting function [Liang *et al.*, 2014].

We also tested the inversion using the data at a higher observation surface (50 km above the reference radius of 1738 km). The recovered densities are similar to the ones in Fig. 7, but their amplitudes are smaller than that of those ones obtained from the observation data at the height of 10 km. This is a result of the inherent non-uniqueness of the inversion calculations.

In the inversion tests, the entire computation time used in the inversion on the basis of our forward modeling algorithm is approximately 6.3 hours (in a desktop with i7-4790k CPU, 16 GB memory). It would be ~ 13.1 days for the computation without using the kernel matrix equivalence in the forward modeling (estimated according to Fig. 5). Meanwhile, the memory required for storing the kernel matrix is about 0.88 GB in our algorithm, while it would be 245.86 GB without the equivalence of kernel matrix.

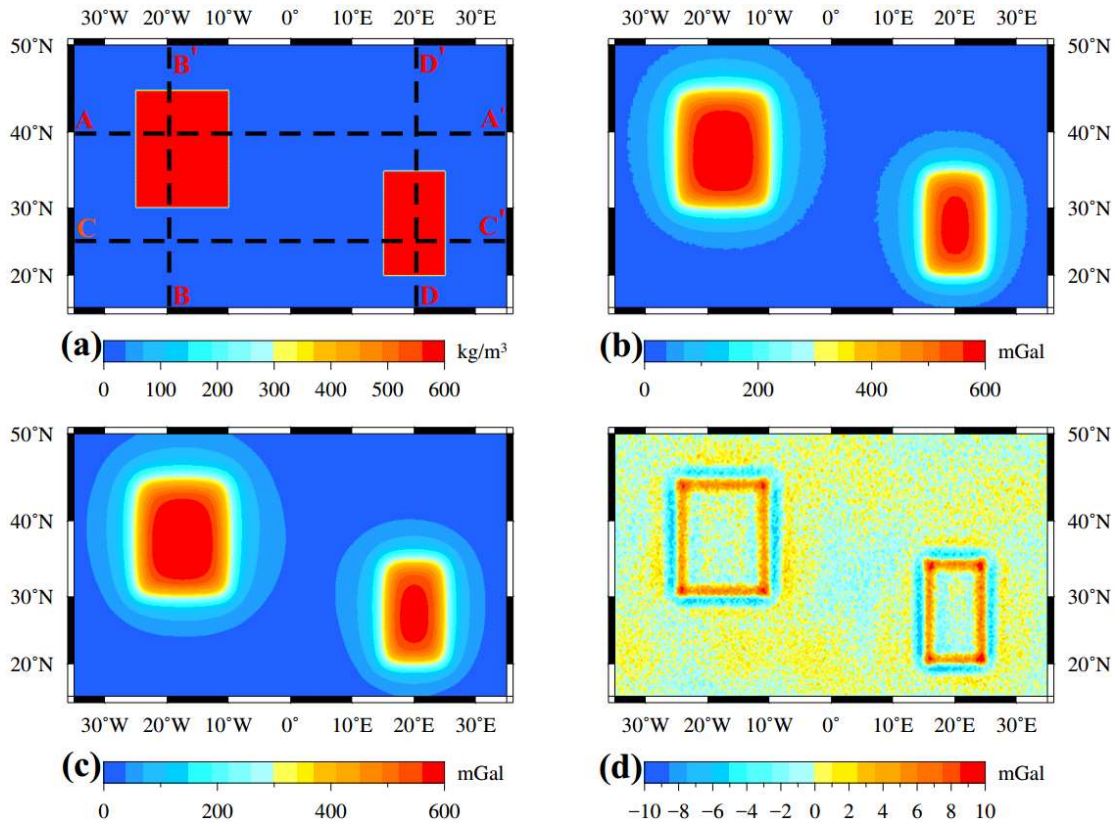


Figure 7. (a) The synthetic mascon model in the horizontal section $z = 27.5 \text{ km}$, (b) the observed and (c) predicted gravity anomalies, and (d) the difference of observed and predicted gravity anomalies. The dashed lines A–A', B–B', C–C' and D–D' in Fig. 7a are four sections shown in Fig. 9.

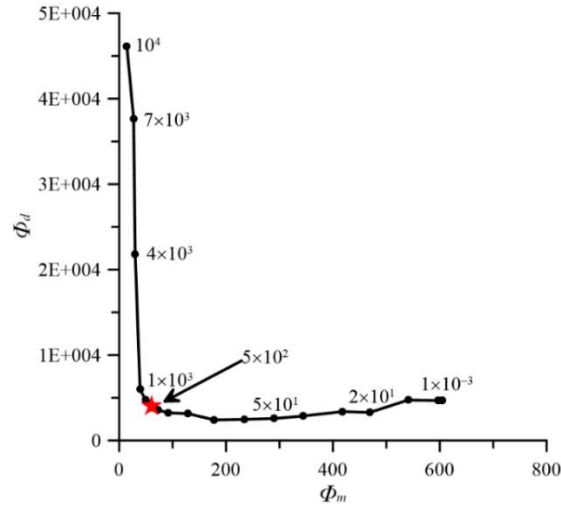


Figure 8. The L-curve of the synthetic mascon model. The numbers are the regularization parameters μ . The best μ in this model is regarded as 5.0×10^2 which is the inflection point of the curve.

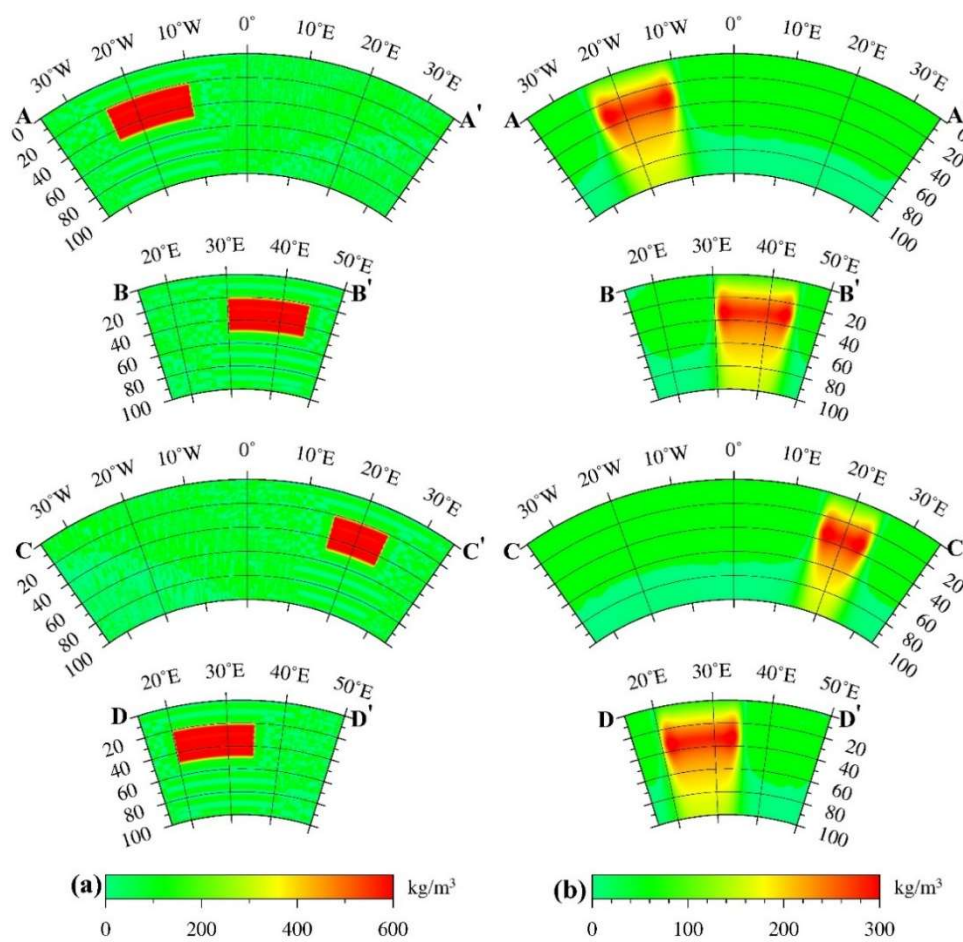


Figure 9. The initial (a) and recovered (b) density distributions in the mascon model along four sections. Section locations are shown in Fig. 7a.

4 Application to the Lunar Mascons

We now apply the proposed method for a 3D inversion of real lunar gravity data. We select the nearside Imbrium and Serenitatis mascon basins as the study area, which is located from 35°W to 35°E and from 15°N to 50°N as shown in Fig. 10a. Because the Moon is characterized by an insignificant ellipticity with a semi-major axis of 1738.1 km and a semi-minor axis of 1736.0 km, the non-sphericity effect is insignificant. For simplicity, we utilize spherical tesseroids in the source discretization for this lunar mare application.

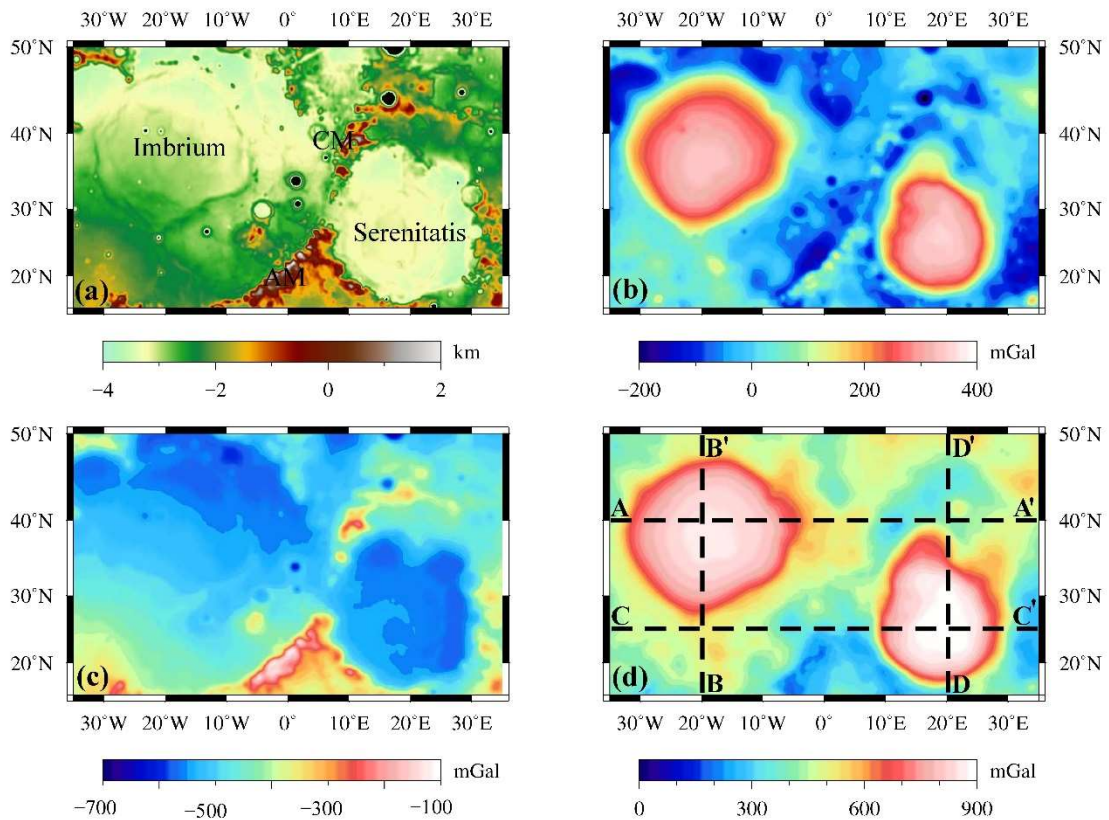


Figure 10. (a) Topography of the Imbrium and Serenitatis basins region derived from the LRO_LTM05 model [Smith *et al.*, 2010]; (b) free-air gravity anomalies derived from the GL1500E model [Konopliv *et al.*, 2014]; (c) the gravity effect of the topography; (d) Bouguer gravity anomalies. The dashed lines A–A', B–B', C–C' and D–D' are four different sections shown in Fig. 11. AM: Apennine Mountains; CM: Caucasus Mountains.

Here we use the latest lunar gravity field model GL1500E (Konopliv *et al.*, 2014, <http://pds-geosciences.wustl.edu/missions/grail/default.htm>) and the topography model LRO_LTM05_2050 (Smith *et al.*, 2010, <http://pds-geosciences.wustl.edu/missions/lro/lola.htm>) to obtain the Bouguer gravity anomalies. The gravity model GL1500E [Konopliv *et al.*, 2013, 2014] is the latest spherical harmonic solution of the lunar gravitational field derived from the GRAIL mission. It extends to degree and order 1500, and exhibits unprecedented detail of the gravity field.

The lunar gravity observations (i.e., free air gravity disturbances) are computed by a spherical harmonic expansion, which is given by [e.g., *Ditmar et al.*, 2003; *Wieczorek*, 2007]

$$g(r, \varphi, \lambda) = \frac{GM}{r^2} \sum_{l=0}^{l_{max}} \sum_{m=0}^l \left(\frac{R}{r}\right)^l (l+1) (\bar{C}_{lm} \cos m\lambda + \bar{S}_{lm} \sin m\lambda) \bar{P}_{lm}(\sin \varphi) \quad (28)$$

where (r, φ, λ) is the coordinates of observation points; R is the reference radius; GM is the gravitational constant times the mass of the central body; l is the degree, m is the order; \bar{C}_{lm} and \bar{S}_{lm} are normalized spherical harmonic coefficients of degree l and order m ; \bar{P}_{lm} are the fully normalized associated Legendre functions.

The free air gravity disturbances (Fig. 10b) are calculated to degree and order 720 at the elevation of 10 km above the reference radius of 1738 km. The gravity effect of the topography (i.e., terrain correction, Fig. 10c) is calculated using the spectral method [*Wieczorek and Phillips*, 1998] at 10 km height with the density of 2560 kg/m³ [*Zuber et al.*, 2013]. It is truncated to the same degree and order of 720 as the free air gravity anomalies. The Bouguer gravity anomalies shown in Fig. 10d are obtained by removing the gravity effect of the topography (Fig. 10c) from the free air gravity anomalies (Fig. 10b). The data spacing of 0.25° is employed in all calculations.

The source region is discretized into 280×140 tesseroids in the longitude and latitude directions both with a horizontal interval of 0.25°, which is consistent with the spacing of the observed data (Fig. 10d). Based on the thickness of the lunar crust [*Wieczorek et al.*, 2013], our model domain along the radius direction is designed to occupy a spherical shell extending from the reference sphere of 0 km to a depth of 100 km, which is divided into 20 layers with an equal interval of 5 km. We carry out the 3D inversion of the observed Bouguer gravity anomalies (Fig. 10d) to recover the 3D density distribution in the model domain using the same regularization parameters as in the synthetic mascon model. The inversion results are displayed in Figs. 11 and 12.

The inverted results along four different cross-sections (Fig. 11) show that the high-density anomalies are mainly located beneath the centers of the Imbrium and Serenitatis basins with the top boundary consistent with the Moho interface revealed by *Wieczorek et al.* [2013]. The high-density anomalies mainly concentrate at the depths 18–40 km beneath the Imbrium and 13–60 km beneath the Serenitatis, which agree with the previous estimate by *Liang et al.* [2014]. *Hikida and Wieczorek* [2007] previously indicated that the azimuthally averaged crustal thickness of Imbrium and Serenitatis are ~20 km and 16 km respectively, which is in a good agreement with our results.

As shown in Figs. 11d and 12, the distribution of the high-density anomalies is highly correlated with the high positive Bouguer gravity anomalies (Fig. 10d), while has little consistency with the extent of the flat topography of the basins (Fig. 10a). Previous studies suggest that the high gravity anomalies in lunar mascon basins are mainly produced by the uplift of high-density mantle materials and basalt filling in basins after planet impacts [*Kaula*, 1971; *Konopliv et al.*, 2014; *Melosh*, 1975]. The density distribution

with depth reveals the upwelling of the dense material, which is consistent with the hypothesis of the mantle uplift as the primary source of the high positive Bouguer gravity anomalies in the Imbrium and Serenitatis basins, as suggested by *Liang et al.* [2014] and *Melosh et al.* [2013]. The Apennine Mountains and the Caucasus Mountains which lie between the Imbrium and Serenitatis basins exhibit negative density anomalies as shown in [Figs. 11a](#) and [12](#).

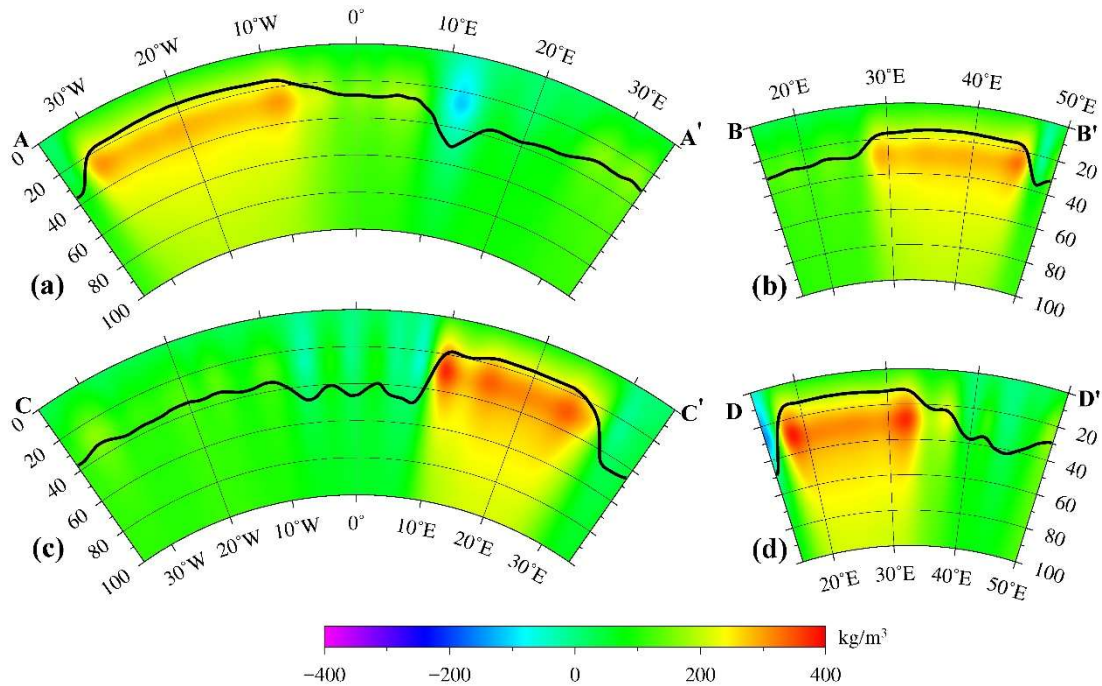


Figure 11. The inverted density distributions along the cross-section of (a) A–A', (b) B–B', (c) C–C', and (d) D–D'. The bold black curve denotes the Lunar Moho interface from *Wieczorek et al.* [2013]. The cross-section locations are shown in [Fig. 10d](#).

It is worth noting that the problem of underestimating the amplitude of the density anomaly due to vertical smearing that occurred in the synthetic model in section 3.2 likely exists in this application to the lunar mascons. Inclusion of some a-priori constraints such as the Moho interface and/or crustal density variations in the inversion would improve the quality of the recovered density structure, which is a future task. The computation time for this example is approximately the same as for the synthetic model in section 3.2 (~6.3 hours) because of the same number of the tesserooids and observation points was employed.

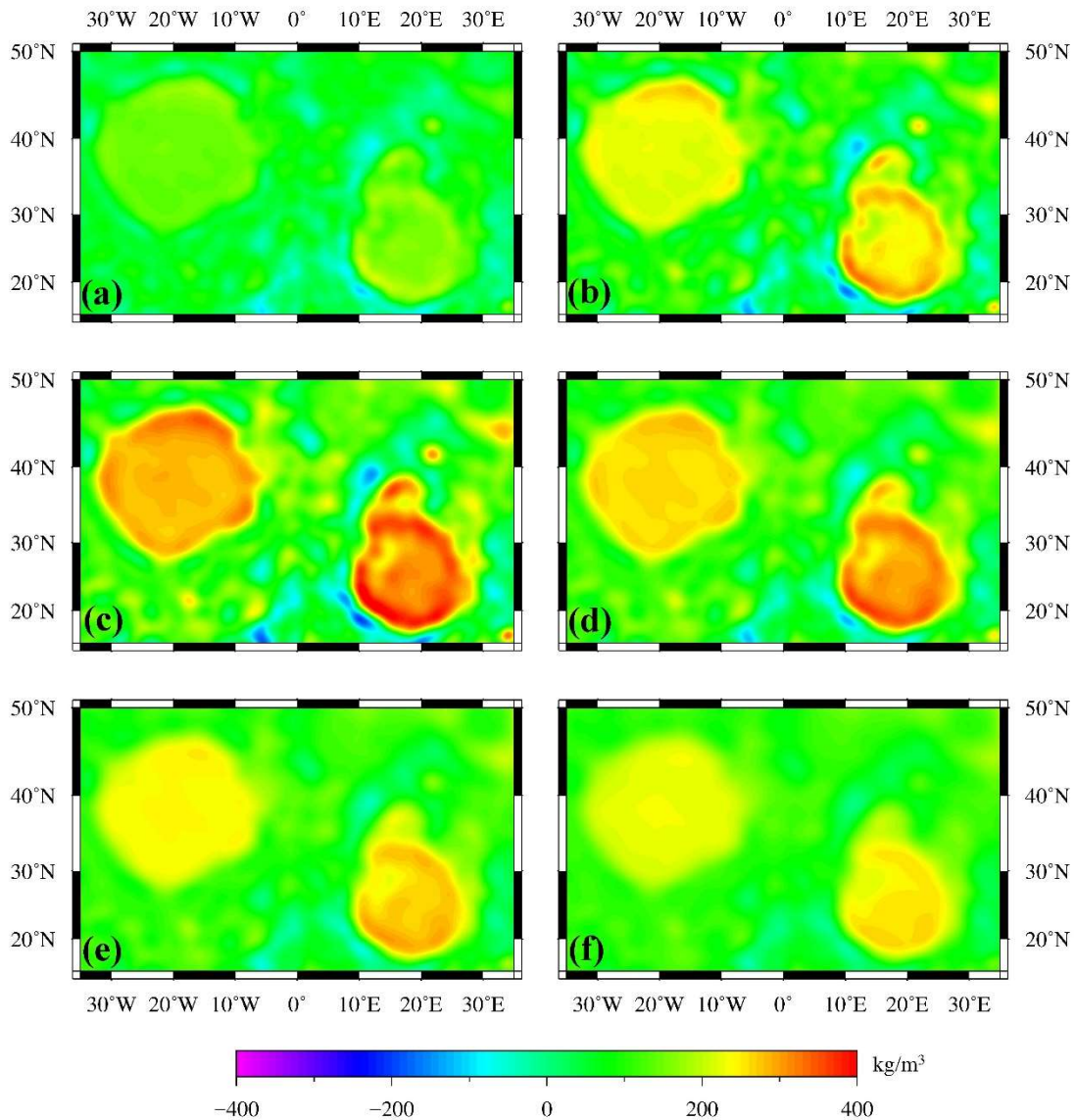


Figure 12. Results of the 3D inversion at the different depths: (a) 7.5 km, (b) 17.5 km, (c) 27.5 km, (d) 37.5 km, (e) 47.5 km, (f) 57.5 km.

5 Conclusions

This study introduced an optimized forward-modeling method of gravitational fields in spherical coordinates. The novel strategy proposed (kernel matrix equivalence) improves the computation speed and reduces the memory requirement in the forward modeling by approximately two orders of magnitude. The kernel matrix equivalence is not only suitable for the 3D GLQ method, as presented in this study, but also for other numerical methods employing the Newton's integral [Wild-Pfeiffer, 2008; Heck and Seitz, 2007; Fukushima, 2018]. In addition, the strategy is easy to combine with adaptive discretization [Uieda *et al.*, 2016] to ensure high accuracies of the forward gravity modeling.

Note that the kernel matrix equivalence strategy works under the condition that the model is

divided into a regular tesseroïd mesh and that the computation points are on a regular grid of constant height that aligns with the tesseroïd mesh. For the observation data in the inversion, the gravity observation data can be easily calculated from the global gravity field models on arbitrary points on or above the surface of the planets using Eq. (28). In particular, the gravity observation data are distributed at a spherical or ellipsoid surface above the source when a constant radius r or a latitude-dependent radius is used in Eq. (28). Therefore, it is easy to meet the requirement of the spherical (or elliptical) surface distribution assumption of observational data in the proposed method. Alternatively, the gravity data can be provided for the orbit heights above the planet's surface. These data have been also used for lithospheric modeling [e.g., *Bouman et al.*, 2016]. Because these observation data might not be presented on a regular grid at a constant height, the proposed algorithm would not work directly for these observed data. However, the regular gravity grids can be obtained by data processing before the inversion to meet the required discretization criteria [e.g., *Bouman et al.*, 2016]. For example, available gravity grids with a constant height at the satellite altitude with respect to the reference ellipsoid or spheroid can be used as the observation data for our algorithm, such as the gravity gradient grids from GOCE [*Bouman et al.*, 2015; *Bouman et al.*, 2016]. As pointed out by *Bouman et al.* [2015, 2016], gravity grids are easier to handle than the original orbit data because the orbit data have complicated error characteristics and are presented in a rotating frame at varying heights. For the gravity grids with a constant height at the satellite altitude with respect to the oblate reference ellipsoid, the kernel matrix equivalence strategy is still valid when the spherical tesseroïds with a latitude-dependent radius are used.

We performed a series of synthetic tests on a spherical shell model to evaluate the computational efficiency and memory occupation of the algorithm. The results show that the computation time of the proposed algorithm is reduced by about two orders of magnitude, and the memory requirement is reduced by N'_λ times compared with the calculation of a full kernel matrix, where N'_λ is the number of model elements in the longitudinal direction. These significant improvements in computational speed and storage usage provide a solution to the problems of calculating and storing a dense Jacobian matrix without loss of accuracy in 3D large-scale gravity inversions.

A 3D regional inversion on a synthetic lunar mascon model was carried out to verify the capability of the algorithm in handling large-scale gravity inversions. The recovered lateral density distributions are qualitatively in a good agreement with the input model. This inversion based on the new algorithm took approximately 6.3 hours computation time and 0.88 GB memory, compared with about a dozen days and 245.86 GB for the inversion using the full kernel matrix, which further demonstrates high efficiency of the proposed forward-modeling method both in computation time and memory usage.

We applied our forward method to a regional 3D inversion of data from the latest lunar gravity model GL1500E. A 3D density distribution is obtained beneath the Imbrium and Serenitatis mascon basins, which feature prominent high-density anomalies beneath their centers. The top boundary of the high-density anomalies agrees with the Moho interface estimated in previous studies. It is consistent with the

hypothesis that the mantle uplift is the primary source for the high positive Bouguer gravity anomalies in the Imbrium and Serenitatis basins.

Acknowledgements

The authors thank Jinsong Du and Qing Liang for discussions in the inversion. We thank the Editor Paul Tregoning, Associate Editor, Dr. Fernando Sansò, and anonymous reviewers for their constructive comments. This research is supported by the National Natural Science Foundation of China (Grant Nos. 41404061, 41674080 and 41674079), and China Postdoctoral Science Foundation (Grant No. 2015T80888). This study was supported by DFG (German Research Foundation), SPP- 1788 Dynamic Earth (grants KA2669/4- 1 and KA2669/4-2). All projected figures are drawn using the Generic Mapping Tools (GMT) [Wessel *et al.*, 2013]. This is SOEST contribution 10673. The data and code for this paper are available at <https://doi.org/10.6084/m9.figshare.7300523.v6>.

References

- Alvarez, O., M. Gimenez, C. Braitenberg, and A. Folguera (2012), GOCE satellite derived gravity and gravity gradient corrected for topographic effect in the South Central Andes region, *Geophys J Int*, 190(2), 941-959, doi:10.1111/j.1365-246X.2012.05556.x.
- Anderson, E. G. (1976), The effect of topography on solutions of Stokes' problem, xiv, 252 p. pp., School of Surveying, University of New South Wales, Kensington, N.S.W., Australia.
- Asgharzadeh, M. F., R. R. B. von Frese, H. R. Kim, T. E. Leftwich, and J. W. Kim (2007), Spherical prism gravity effects by Gauss-Legendre quadrature integration, *Geophys J Int*, 169(1), 1-11, doi:10.1111/j.1365-246X.2007.03214.x.
- Barnes, G., and J. Barraud (2012), Imaging geologic surfaces by inverting gravity gradient data with depth horizons, *Geophysics*, 77(1), G1-G11, doi:10.1190/Geo2011-0149.1.
- Barnes, G., and J. Lumley (2011), Processing gravity gradient data, *Geophysics*, 76(2), I33-I47, doi:10.1190/1.3548548.
- Bhattacharyya, B. K., and M. E. Navolio (2010), A FAST FOURIER TRANSFORM METHOD FOR RAPID COMPUTATION OF GRAVITY AND MAGNETIC ANOMALIES DUE TO ARBITRARY BODIES, *Geophysical Prospecting*, 24(4), 633-649.
- Blakely, R. J. (1995), Potential theory in gravity and magnetic applications, xix, 441 p. pp., Cambridge University Press, Cambridge England ; New York.
- Bouman, J., J. Ebbing, S. Meekes, R. A. Fattah, M. Fuchs, S. Gradmann, R. Haagmans, V. Lieb, M. Schmidt, and D. Dettmering (2015), GOCE gravity gradient data for lithospheric modeling, *Int. J. Appl. Earth Obs. Geoinf.*, 35, 16-30.
- Bouman, J., J. Ebbing, M. Fuchs, J. Sebera, V. Lieb, W. Szwillus, R. Haagmans, and P. Novak (2016), Satellite gravity gradient grids for geophysics, *Scientific reports*, 6, 21050.
- Braitenberg, C. (2015), Exploration of tectonic structures with GOCE in Africa and across-continent, *Int J*

- Appl Earth Obs, 35, 88-95, doi:10.1016/j.jag.2014.01.013.
- Braitenberg, C., and J. Ebbing (2009), New insights into the basement structure of the West Siberian Basin from forward and inverse modeling of GRACE satellite gravity data, *J Geophys Res-Sol Ea*, 114, doi:Artn B0640210.1029/2008jb005799.
- Calvetti, D., S. Morigi, L. Reichel, and F. Sgallari (2000), Tikhonov regularization and the L-curve for large discrete ill-posed problems, *J Comput Appl Math*, 123(1-2), 423-446, doi:Doi 10.1016/S0377-0427(00)00414-3.
- Caratori Tontini, F., L. Cocchi, and C. Carmisciano (2009), Rapid 3-D forward model of potential fields with application to the Palinuro Seamount magnetic anomaly (southern Tyrrhenian Sea, Italy), *J Geophys Res-Sol Ea*, 114, doi:Artn B0210310.1029/2008jb005907.
- Deng, X. L., T. Grombein, W. B. Shen, B. Heck, and K. Seitz (2016), Corrections to "A comparison of the tesseroid, prism and point-mass approaches for mass reductions in gravity field modelling" (Heck and Seitz, 2007) and "Optimized formulas for the gravitational field of a tesseroid" (Grombein et al., 2013), *J Geodesy*, 90(6), 585-587, doi:10.1007/s00190-016-0907-8.
- Ditmar, P., J. Kusche, and R. Klees (2003), Computation of spherical harmonic coefficients from gravity gradiometry data to be acquired by the GOCE satellite: regularization issues, *J. Geod.*, 77(7-8), 465-477, doi:10.1007/s00190-003-0349-y.
- Du, J., C. Chen, V. Lesur, R. Lane, and H. Wang (2015), Magnetic potential, vector and gradient tensor fields of a tesseroid in a geocentric spherical coordinate system, *Geophys. J. Int.*, 201(3), 1977-2007, doi:10.1093/gji/ggv123.
- Foks, N. L., R. Krahenbuhl, and Y. G. Li (2014), Adaptive sampling of potential-field data: A direct approach to compressive inversion, *Geophysics*, 79(1), Im1-Im9, doi:10.1190/Geo2013-0087.1.
- Forsberg, R., and C. C. Tscherning (1997), *Topographic effects in gravity field modelling for BVP*, 239-272 pp., Springer Berlin Heidelberg.
- Fukushima, T. (2018). Accurate computation of gravitational field of a tesseroid. *Journal of Geodesy*, 1–16. <https://doi.org/10.1007/s00190-018-1126-2>.
- Grombein, T., K. Seitz, and B. Heck (2013), Optimized formulas for the gravitational field of a tesseroid, *J Geodesy*, 87(7), 645-660, doi:10.1007/s00190-013-0636-1.
- Hansen, P. C. (2001), *The L-Curve and its Use in the Numerical Treatment of Inverse Problems*, 119-142 pp.
- Heck, B., and K. Seitz (2007), A comparison of the tesseroid, prism and point-mass approaches for mass reductions in gravity field modelling, *J Geodesy*, 81(2), 121-136, doi:10.1007/s00190-006-0094-0.
- Heiskanen, W. A., and H. Moritz (1967), *Physical geodesy*, vi, 364 p. pp., W. H. Freeman, San Francisco.
- Hikida, H., and M. A. Wieczorek (2007), Crustal thickness of the Moon: New constraints from gravity inversions using polyhedral shape models, *Icarus*, 192(1), 150-166, doi:10.1016/j.icarus.2007.06.015.
- Hirt, C., W. E. Featherstone, and U. Marti (2010), Combining EGM2008 and SRTM/DTM2006.0 residual terrain model data to improve quasigeoid computations in mountainous areas devoid of gravity data, *J Geodesy*, 84(9), 557-567, doi:10.1007/s00190-010-0395-1.

- Kaban M.K. and W.D. Mooney, (2001) Density structure of the lithosphere in the Southwestern United States and its tectonic significance. *J. Geophys. Res.* 106(B1), 721-740.
- Kaban M. K., P. Schwintzer, Ch. Reigber, (2004) A new isostatic model of the lithosphere and gravity field, *Journal of Geodesy* 78, 368-385.
- Kaban, M. K., El Khrepy, S., & Al-Arifi, N. (2016b). Isostatic Model and Isostatic Gravity Anomalies of the Arabian Plate and Surroundings. *Pure and Applied Geophysics*, 173, Issue: 4, 1211-1221. DOI 10.1007/s00024-015-1164-0.
- Kaban, M. K., W. Stolk, M. Tesauro, S. El Khrepy, N. Al-Arifi, F. Beekman, and S. A. P. L. Cloetingh (2016a), 3D density model of the upper mantle of Asia based on inversion of gravity and seismic tomography data, *Geochem. Geophys. Geosyst.*, 17, doi:10.1002/2016GC006458.
- Kamm, J., I. A. Lundin, M. Bastani, M. Sadeghi, and L. B. Pedersen (2015), Joint inversion of gravity, magnetic, and petrophysical data - A case study from a gabbro intrusion in Boden, Sweden, *Geophysics*, 80(5), B131-B152, doi:10.1190/Geo2014-0122.1.
- Kaula, W. M. (1971), Interpretation of the lunar gravitational field ☆, *Physics of the Earth & Planetary Interiors*, 4(3), 185-192.
- Konopliv, A. S., Park, R. S., Yuan, D.-N., Asmar, S. W., Watkins, M. M., Williams, J. G., Fahnestock, E., Kruizinga, G., Paik, M., Strelakov, D., Harvey, N., Smith, D. E., and Zuber, M. T., 2013, The JPL lunar gravity field to spherical harmonic degree 660 from the GRAIL Primary Mission: *Journal of Geophysical Research: Planets*, v. 118, no. 7, p. 1415-1434.
- Konopliv, A. S., et al. (2014), High-resolution lunar gravity fields from the GRAIL Primary and Extended Missions, *Geophys Res Lett*, 41(5), 1452-1458, doi:10.1002/2013gl059066.
- Ku, C. C. (1977), a Direct Computation of Gravity and Magnetic Anomalies Caused by 2- and 3-DIMENSIONAL Bodies of Arbitrary Shape and Arbitrary Magnetic Polarization by Equivalent-Point Method and a Simplified Cubic Spline, *Geophysics*, 42(3), 610.
- Li, Y., and D. W. Oldenburg (1996), 3-D inversion of magnetic data, *Geophysics*, 61(2), 394-408, doi:10.1190/1.1443968.
- Li, Y., and D. W. Oldenburg (1998), 3-D inversion of gravity data, *Geophysics*, 63(1), 109-119.
- Li, Y. G., and D. W. Oldenburg (2000), Joint inversion of surface and three-component borehole magnetic data, *Geophysics*, 65(2), 540-552, doi:Doi 10.1190/1.1444749.
- Li, Y. G., and D. W. Oldenburg (2003), Fast inversion of large-scale magnetic data using wavelet transforms and a logarithmic barrier method, *Geophys J Int*, 152(2), 251-265, doi:DOI 10.1046/j.1365-246X.2003.01766.x.
- Li, Z. W., T. Y. Hao, Y. Xu, and Y. Xu (2011), An efficient and adaptive approach for modeling gravity effects in spherical coordinates, *J Appl Geophys*, 73(3), 221-231, doi:10.1016/j.jappgeo.2011.01.004.
- Liang, Q., C. Chen, and Y. G. Li (2014), 3-D inversion of gravity data in spherical coordinates with application to the GRAIL data, *J Geophys Res-Planet*, 119(6), 1359-1373, doi:10.1002/2014je004626.
- Martinez, C., Y. G. Li, R. Krahenbuhl, and M. A. Braga (2013), 3D inversion of airborne gravity gradiometry

- data in mineral exploration: A case study in the Quadrilatero Ferrifero, Brazil, *Geophysics*, 78(1), B1-B11, doi:10.1190/Geo2012-0106.1.
- Melosh, H. J. (1975), Mascons and the moon's orientation, *Earth & Planetary Science Letters*, 25(3), 322-326.
- Melosh, H. J., et al. (2013), The Origin of Lunar Mascon Basins, *Science*, 340(6140), 1552-1555, doi:10.1126/science.1235768.
- Mikuska, J., R. Pasteka, and I. Marusiak (2006), Estimation of distant relief effect in gravimetry, *Geophysics*, 71(6), J59-J69, doi:10.1190/1.2338333.
- Mosher, C. R. W., and C. G. Farquharson (2013), Minimum-structure borehole gravity inversion for mineral exploration: A synthetic modeling study, *Geophysics*, 78(2), G25-G39, doi:10.1190/Geo2012-0373.1.
- Nabighian, M. N., V. J. S. Grauch, R. O. Hansen, T. R. LaFehr, Y. Li, J. W. Peirce, J. D. Phillips, and M. E. Ruder (2005), 75th Anniversary - The historical development of the magnetic method in exploration, *Geophysics*, 70(6), 33nd-61nd, doi:10.1190/1.2133784.
- Neumann, G. A., M. T. Zuber, M. A. Wieczorek, P. J. McGovern, F. G. Lemoine, and D. E. Smith (2004), Crustal structure of Mars from gravity and topography, *J Geophys Res-Planet*, 109(E8), doi:Artn E0800210.1029/2004je002262.
- Parker, R. L. (2010), The Rapid Calculation of Potential Anomalies, *Geophysical Journal of the Royal Astronomical Society*, 31(4), 447-455.
- Pilkington, M. (1949), 3-D magnetic imaging using conjugate gradients, *Seg Technical Program Expanded Abstracts*, 15(1), 1132.
- Purucker, M., D. Ravat, H. Frey, C. Voorhies, T. Sabaka, and M. Acuna (2000), An altitude-normalized magnetic map of Mars and its interpretation, *Geophys Res Lett*, 27(16), 2449-2452, doi:10.1029/2000gl000072.
- Reguzzoni, M., D. Sampietro, and F. Sanso (2013), Global Moho from the combination of the CRUST2.0 model and GOCE data, *Geophys J Int*, 195(1), 222-237, doi:10.1093/gji/ggt247.
- Ren, Z. Y., J. T. Tang, T. Kalscheuer, and H. Maurer (2017), Fast 3-D large-scale gravity and magnetic modeling using unstructured grids and an adaptive multilevel fast multipole method, *J Geophys Res-Sol Ea*, 122(1), 79-109, doi:10.1002/2016jb012987.
- Root, B. C., P. Novák, D. Dirks, M. Kaban, W. van der Wal, and L. L. A. Vermeersen. (2016). On a spectral method for forward gravity field modelling. *Journal of Geodynamics* 97, 22-30.
- Shin, Y. H., K. S. Choi, and H. Z. Xu (2006), Three-dimensional forward and inverse models for gravity fields based on the Fast Fourier Transform, *Computers & Geosciences*, 32(6), 727-738, doi:10.1016/j.cageo.2005.10.002.
- Smith, D. E., et al. (2010), Initial observations from the Lunar Orbiter Laser Altimeter (LOLA), *Geophys Res Lett*, 37, doi:Artn L1820410.1029/2010gl043751.
- Tikhonov, A. N., and V. Y. Arsenin (1977), Solution of Ill-Posed Problems, *Mathematics of Computation*, 32(144), 491-491.

- Uieda, L., and V. C. F. Barbosa (2012), Robust 3D gravity gradient inversion by planting anomalous densities, *Geophysics*, 77(4), G55-G66, doi:10.1190/Geo2011-0388.1.
- Uieda, L., V. C. F. Barbosa, and C. Braitenberg (2016), Tesseroids: Forward-modeling gravitational fields in spherical coordinates, *Geophysics*, 81(5), F41-F48, doi:10.1190/Geo2015-0204.1.
- Wessel, P., Smith, W. H. F., Scharroo, R., Luis, J., & Wobbe, F. (2013). Generic Mapping Tools: Improved Version Released. *Eos, Transactions American Geophysical Union*, 94(45), 409–410. <https://doi.org/10.1002/2013EO450001>
- Wieczorek, M. (2007), Gravity and topography of the terrestrial planets, *Treatise on geophysics*, 10, 165-206.
- Wieczorek, M. A., et al. (2013), The Crust of the Moon as Seen by GRAIL, *Science*, 339(6120), 671-675, doi:10.1126/science.1231530.
- Wieczorek, M. A., and R. J. Phillips (1998), Potential anomalies on a sphere: Applications to the thickness of the lunar crust, *Journal of Geophysical Research Planets*, 103(E1), 1715-1724.
- Wild-Pfeiffer, F. (2008), A comparison of different mass elements for use in gravity gradiometry, *J Geodesy*, 82(10), 637-653, doi:10.1007/s00190-008-0219-8.
- Wu, L. Y., and G. Tian (2014), High-precision Fourier forward modeling of potential fields, *Geophysics*, 79(5), G59-G68, doi:10.1190/Geo2014-0039.1.
- Zhao, G. D., B. Chen, L. W. Chen, J. X. Liu, and Z. Y. Ren (2018), High-accuracy 3D Fourier forward modeling of gravity field based on the Gauss-FFT technique, *J Appl Geophys*, 150, 294-303, doi:10.1016/j.jappgeo.2018.01.002.
- Zuber, M. T., et al. (2013), Gravity Field of the Moon from the Gravity Recovery and Interior Laboratory (GRAIL) Mission, *Science*, 339(6120), 668-671, doi:10.1126/science.1231507.