



ISSN 1725-3187 (online)
ISSN 1016-8060 (print)

EUROPEAN ECONOMY

Economic Papers 519 | June 2014

International Capital Flows and the Boom-Bust Cycle in Spain

Jan in 't Veld Robert Kollmann, Beatrice Pataracchia, Marco Ratto, Werner Roeger



Economic and
Financial Affairs

Economic Papers are written by the staff of the Directorate-General for Economic and Financial Affairs, or by experts working in association with them. The Papers are intended to increase awareness of the technical work being done by staff and to seek comments and suggestions for further analysis. The views expressed are the author's alone and do not necessarily correspond to those of the European Commission.

Comments and enquiries should be addressed to:

European Commission
Directorate-General for Economic and Financial Affairs
Unit Communication
B-1049 Brussels
Belgium
E-mail: ecfin-info@ec.europa.eu

LEGAL NOTICE

Neither the European Commission nor any person acting on its behalf may be held responsible for the use which may be made of the information contained in this publication, or for any errors which, despite careful preparation and checking, may appear.

This paper exists in English only and can be downloaded from http://ec.europa.eu/economy_finance/publications/.

More information on the European Union is available on <http://europa.eu>.

KC-AI-14-519-EN-N (online)
ISBN 978-92-79-35168-6 (online)
doi:10.2765/70037 (online)

KC-AI-14-519-EN-C (print)
ISBN 978-92-79-36113-5 (print)
doi:10.2765/77686 (print)

© European Union, 2014
Reproduction is authorised provided the source is acknowledged.

European Commission

Directorate-General for Economic and Financial Affairs

International Capital Flows and the Boom-Bust Cycle in Spain (*)

Jan in 't Veld (DG-ECFIN, European Commission)

Robert Kollmann (ECARES, Université Libre de Bruxelles and CEPR)

Beatrice Pataracchia (JRC, European Commission)

Marco Ratto (JRC, European Commission)

Werner Roeger (DG-ECFIN, European Commission)

Abstract

We study the joint dynamics of foreign capital flows and real activity during the recent boom-bust cycle of the Spanish economy, using a three-country New Keynesian model with credit-constrained households and firms, a construction sector and a government. We estimate the model using 1995Q1-2013Q2 data for Spain, the rest of the Euro Area (REA) and the rest of the world. We show that falling risk premia on Spanish housing and non-residential capital, a loosening of collateral constraints for Spanish households and firms, as well as a fall in the interest rate spread between Spain and the REA fuelled the Spanish output boom and the persistent rise in foreign capital flows to Spain, before the global financial crisis. During and after the global financial crisis, falling house prices, and a tightening of collateral constraints for Spanish borrowers contributed to a sharp reduction in capital inflows, and to the persistent slump in Spanish real activity. The credit crunch was especially pronounced for Spanish households; firm credit constraints tightened later and more gradually, and contributed much less to the slump.

April, 2014

JEL Classification: C11, E21, E32, E62.

Keywords: international capital flows, boom-bust cycle, sudden stop, housing market, financial frictions, Spain, European Monetary Union.

E-mail addresses:

jan.intveld@ec.europa.eu, robert.kollmann@yahoo.com, beatrice.pataracchia@jrc.ec.europa.eu,
marco.ratto@jrc.ec.europa.eu, werner.roeger@ec.europa.eu

(*) The views expressed in the paper are those of the authors and should not be attributed to the European Commission. We thank Menzie Chinn and Massimiliano Pisani for advice. Useful suggestions were also received from Francisco de Castro, Massimo Suardi and from participants at the conference 'Current Account Imbalances and International Financial Integration' (Dec. 2013) held at the European Commission. Research support from Jukka Heikkinen is gratefully acknowledged.

1. Introduction

After the launch of the Euro in 1999, Greece, Ireland, Portugal, Spain, and other countries in the EU periphery ran sizable current account deficits. This was often accompanied by output and construction booms in these countries, and by inflation rates above the Euro Area average. In the wake of the global financial crisis (2008-09), private capital flows to the periphery countries fell sharply, and a strong contraction in real activity and asset prices occurred. This paper provides a quantitative analysis of the joint dynamics of the trade balance and real activity in Spain, the largest of the Euro Area countries that received sizable capital inflows after the creation of the Euro, and then experienced a sudden stop. We do so using a three-country New Keynesian Dynamic Stochastic General Equilibrium (DSGE) model consisting of Spain, an aggregate of the Rest of the Euro Area (REA) and an aggregate of the rest of the world (ROW).¹ We estimate the model using quarterly data for Spain, the REA and the ROW during the period 1995Q1-2013Q2. The Spanish block of the model has a rich structure that allows us to capture the key features of the Spanish boom-bust cycle. In particular, we assume a construction sector and a government; Spanish households and non-financial firms face collateral constraints (à la Kiyotaki and Moore (1997)). The model assumes nominal price and wage rigidities, as well as demand and supply shocks in goods, labour and asset markets. We use the model as a laboratory for quantifying the key drivers and transmission mechanisms that have affected the Spanish economy since 1995.

The creation of the Euro eliminated intra-Euro Area currency risk and led to a convergence of Spanish interest rates to the lower interest rates in the REA. Two other competing explanations for the boom in the Spanish economy are loosening credit conditions and asset bubbles. Our estimates suggest that these three factors all fuelled a sharp rise in Spanish investment and house prices, and increased the fragility of the balance sheets of Spanish households and non-financial firms. During the global financial crisis, a fall in Spanish asset prices, and a tightening of collateral constraints, led to a sharp improvement in the Spanish trade balance and current account, and to a persistent fall in Spanish residential and non-residential investment and output. The credit crunch was especially pronounced for Spanish households. Firm credit constraints tightened later and more gradually, and contributed much less to the slump.

¹Throughout this paper, the term 'Euro Area' (EA) refers to the 17 countries that were members of the Euro Area in 2013. REA is the EA less Spain.

Our analysis highlights the key role of domestic asset bubbles (explained in the model by exogenous asset risk-premium shocks) for the Spanish boom-bust cycle. In related analyses (not based on quantitative models), Reis (2013) and Fernández-Villaverde et al. (2013) argue that the pre-crisis boom in Spain (and in other Euro Area periphery countries) was largely driven by the convergence of Spanish interest rates to REA rates. While our model estimates show that interest rate convergence mattered for Spain, we find that asset bubbles and the loosening of credit constraints for households and firms had a more pronounced role.

In the aftermath of the global financial crisis, Spanish real house prices continued to fall, while equity prices stabilized after 2010. Household deleveraging during this period has been achieved through a fall in residential investment, while aggregate consumption as a share of GDP has remained comparatively stable. The tightening of firm credit constraints during the aftermath of the global crisis was partly off-set by a fall in the risk-premium on production capital. During the Spanish sovereign debt crisis, foreign *private* lending to Spain fell sharply—however, credit to Spanish households and non-financial firms was stabilized through the massive substitution of foreign private lending by central bank lending. The recovery of the world economy and increased productivity growth in Spain also contributed to the Spanish trade balance improvement, in the aftermath of the global financial crisis.

Our paper contributes to the literature that quantifies financial shocks before and during the financial crisis. By analyzing a wider range of financial shocks (interest rate spreads, risk premia on housing and production capital, shocks to collateral constraints of households and firms) in an *estimated* open economy model, we can more precisely identify the timing and relative importance of individual financial shocks. In related studies, Justiniano et al. (2013, 2014) quantify the effect of *household* leveraging and deleveraging in the US economy, using a calibrated DSGE model.² These authors emphasize the importance of distinguishing changes in credit due to shocks to loan-to-value (LTV) ratios from changes in credit induced by asset price fluctuations. Justiniano et al. argue that shocks to LTV ratios per se cannot explain the recent boom-bust cycle of US house prices. The results in the paper here (for Spain) are consistent with this conclusion. We show that the boom-bust cycle in asset prices and real activity is better explained by shocks to risk premia on housing and other capital assets. Different from Justiniano et al., the model here also allows for credit constraints for firms. The fact that within the Euro Area monetary policy only very partially targets the Spanish economy is an additional amplifying mechanism in our model.

²See also Eggertsson and Krugman (2012) and Guerrieri and Lorenzoni (2012) for theoretical analyses of the macroeconomic effects of a credit constraint tightening, in a closed economy.

Several recent empirical studies have also highlighted the role of housing and credit markets for the dynamics of the current account (e.g., Aizenman and Jinjara (2013), Chinn et al. (2013), Obstfeld and Rogoff (2010)). The paper here analyzes that role using an estimated DSGE model. The present paper is also related to a literature that analyzes current account dynamics using DSGE models (e.g., Kollmann (1998), Erceg et al. (2006), Gomes et al. (2012)); by contrast to the paper here, that literature has typically used calibrated models (not estimated), and it has abstracted from housing markets and the key financial frictions and shocks considered in the present model.

The economic events in Spain (and other European periphery countries) during the past 15 years are reminiscent of the boom-bust cycles characterized by capital inflows and sudden stops experienced by many economies in Latin America and Asia during the 20th century; see Adalet and Eichengreen (2007) for an empirical overview. The theoretical literature on sudden stops uses highly stylized models; see, e.g., Calvo (1998). By contrast, the present paper analyzes a boom-bust cycle linked to international capital in- and outflows, using a fully-fledged estimated DSGE model. Economic theory suggests that a country's external balance reflects domestic and foreign macroeconomic and financial shocks, and the structural features of the domestic and foreign economies. This underscores the importance of analyzing the external balance using an *estimated* state-of-the art dynamic general equilibrium model that captures the relevant shocks, and their transmission to the macroeconomy.

The paper here builds on in't Veld et al. (2012) who analyzed the Spanish business cycle using a *small open economy* model that assumes a housing sector and credit constrained household, while firms are not credit constrained. As the creation of the Euro has increased financial integration in Europe, the present paper assumes that Spanish households too can borrow internationally, subject to collateral constraints (we also assume that firms are financially constrained, as mentioned above). In addition, the paper here uses a three-country model that allows to better capture the key external shocks affecting Spain.

Section 2 describes the Spanish macroeconomy since the 1990s. Section 3 presents our model. Sections 4 and 5 discuss the econometric approach and present the empirical results.

2. Dynamics of the Spanish macroeconomy

For most of the decade up to 2007, GDP growth in Spain exceeded growth in the REA (see Fig. 1.a). But the global crisis hit Spain severely, with the year-on-year GDP growth rate falling to -4.6% in 2009Q2. Spain experienced a weaker recovery in 2010-11 than the REA, and entered into a second-dip recession in 2012. During the Spanish boom years growth of domestic demand exceeded GDP growth. In particular the ratios of residential and non-residential investment to GDP both grew by about 5 percentage points until the financial crisis, and then experienced a downward correction of the same amount (Fig. 1.b). By contrast the Spanish consumption-to-GDP ratio rose only mildly until the crisis, and then fell slightly. The Spanish trade balance/GDP ratio showed a large and persistent decline between the end of the 1990s and 2007 (reaching -6% in 2007). The trade balance then rose rapidly in 2008, was stable at about -2% until the end of 2010, and then started to improve again, reaching positive values in 2012-13 (Fig. 1.c). These trade balance fluctuations were largely driven by the sizable rise in Spanish investment during the boom, and the subsequent contraction of investment. The Spanish saving rate shows positive co-movement with the investment rate (rising during the boom, and falling after the crisis), but fluctuated much less (Fig.1.d).³ The Spanish balance of net foreign income and transfers has become gradually more negative during the sample period (reflecting Spain's growing net foreign liabilities). Spain's current account balance has, thus, been smaller than the trade balance; however, the fluctuations of the current account are dominated by the dynamics of the trade balance (Fig. 1.c).

The external deficits prior to the crisis led to a strong rise in Spain's net foreign liabilities--from around 20% of GDP in the mid-1990s to more than 90% of GDP by 2009 (Fig. 1.e). The rise in the trade balance since the global crisis has stabilized Spain's net foreign liabilities. Flow of funds data show that the sharp increase in Spanish net foreign liabilities before the crisis was largely driven by a rise in the net foreign liabilities of the Spanish corporate sector, especially of banks; the net foreign liabilities of the financial sector reached 50% of annual GDP in 2008Q1, and stayed at about that value until 2011Q2. After 2011Q2, foreign investors sharply reduced their lending to Spanish commercial banks. Those banks then borrowed from the Bank of Spain to repay foreign liabilities, and the Bank of Spain borrowed abroad, essentially from the ECB ('target balances'). This official financing stabilized aggregate Spanish net foreign liabilities (see Fig. 1.e).

³The 'saving' rate plotted in Fig. 1.d is defined as $s=(\text{GDP}-\text{private consumption}-\text{government consumption})/\text{GDP}$, and thus $\text{NX}/\text{GDP}=s-\text{investment}/\text{GDP}$, where NX: net exports (all variables are in nominal terms).

Spanish inflation (GDP deflator) averaged 3.5% p.a. in 1995-2007, and thus markedly exceeded the EA average (2.0%); the financial crisis led to a fall in inflation, below average EA inflation (Fig. 1.g). Thus, the Spanish real effective exchange rate appreciated steadily during the boom period, and depreciated during and after the bust. High inflation also implied that Spain had markedly lower real interest rates than the REA, prior to the financial crisis. Real house prices (relative to the GDP deflator) rose by 80% between 2001 and 2008, and have been falling steadily since then; by 2012 real house prices had fallen back to their 2003 values. This suggests that a housing bubble developed in Spain, before the crisis.

Before the launch of the Euro (1.1.1999), Spanish nominal interest rates were markedly higher than rates in the REA. The creation of the Euro led to a convergence of Spanish nominal rates to Euro Area rates. The average Spanish government interest rate (interest payments/sovereign debt stock) fell from around 9% in the late 1990s to below 4% by 2010, but has since risen again (Fig. 1.f). While Spanish households' borrowing costs have moved in line with the ECB policy rate, typically around 200 bps higher, there has been a marked increase in interest rates for non-financial firms in recent years, despite falling policy rates.

Before the crisis, Spain's public finances were in better health than the Euro Area average. Spanish government balances improved markedly between the mid-1990s and the mid-2000s (Fig. 1.c). The crisis then led to a sharp deterioration of public finances.

3. Model description

We consider a three-country world consisting of Spain, the rest of Euro Area (REA), and the rest of the world (ROW). The Spanish block of the model is rather detailed, while the REA and the ROW blocks are more stylized.⁴ The Spanish block assumes two (representative) households, firms and a government. Spanish households provide labour services to firms, and accumulate housing capital. The two households have different rates of time preference. The more patient household owns the country's firms, and holds financial assets. The other (impatient) household borrows from the domestic patient household and from abroad, using her housing capital as collateral. We refer to the patient and impatient household as 'Ricardian' and 'credit-constrained', respectively. There is an intermediate goods producing

⁴The Spanish block builds on the QUEST model of the EU economy (Ratto et al., 2009). Other versions of that model have been estimated with US and with German data (in 't Veld et al. (2011); Kollmann et al. (2014)). The following presentation abstracts from adjustment costs (for labour and capital) and variable capital utilization rates assumed in the estimated model. These features help to better capture the data dynamics. Also, we only present the main exogenous shocks. The detailed model is available in the appendix.

sector in Spain that uses domestic labour and capital; the sector borrows domestically and internationally, using production capital as collateral. A Spanish final good sector combines domestic and imported intermediates and produces a homogeneous final good that is used for domestic consumption, capital accumulation and exports. Spanish intermediate goods firms are monopolists; Spanish wages are set by monopolistic trade unions. Nominal intermediate good prices and wages are sticky. All other markets are competitive. The Spanish government levies distorting taxes and issues debt. We next present the key aspects of Spanish agents' decision problems, and we then give an overview of the REA and ROW model blocks.

3.1. Spanish households

A household's welfare depends on consumption, hours worked and her stock of housing capital. Household $h=r,c$ (r : Ricardian, c : credit-constrained) period t utility, U_t^h , is: $U_t^h \equiv \ln\left((C_t^h - \eta C_{t-1}^h)^{(\sigma-1)/\sigma} + (s_H)^{1/\sigma} (H_t^h)^{(\sigma-1)/\sigma}\right)^{\sigma/(\sigma-1)} + u_t^L \frac{1}{1-\kappa} \{(1-L_t^h)^{1-\kappa} - 1\}$ with $0 < \eta < 1$ and $0 < s_H^h, \kappa, u_t^L$. C_t^h, H_t^h and $L_t^h \leq 1$ are consumption, the housing stock and the labour hours of worker h in period t , respectively. There is habit persistence for consumption. The household's time endowment is normalized at 1, so that $1-L_t^h$ is the household's leisure. u_t^L is an exogenous random preference shock (common to both households). All exogenous random variables in the model follow independent AR(1) processes. The subjective discount factor of household $h=r,c$, $\beta_{t,t+1}^h$, is an exogenous random variable, with $0 < \beta_{t,t+1}^c < \beta_{t,t+1}^r < 1$. Date t expected life-time utility of household h , V_t^h , is defined by $V_t^h = U_t^h + E_t \beta_{t,t+1}^h V_{t+1}^h$.

3.1.1. The Spanish Ricardian household

The Ricardian household owns all domestic firms, and she holds one-period bonds issued by domestic and foreign borrowers. The household's period t budget constraint is:

$$(1+\tau^C)p_t C_t^r + (1+\tau^C)p_t^H I_t^{H,r} + T_t^r + B_{t+1}^r = (1+r_t)B_t^r + (1-\tau^W)w_t L_t^r + \text{div}_t^i + \text{div}_t^H + \text{div}_t^K, \quad (1)$$

where B_{t+1}^r are nominal bond holdings at the end of date t ; the interest rate earned on those bonds, r_{t+1} , equals the policy rate. All bonds are denominated in Euros. $I_t^{H,r}$ is the agent's housing investment. The law of motion of her housing stock is $H_{t+1}^r = I_t^{H,r} + (1-\delta^H)H_t^{H,r}$ where $1 < \delta^H < 1$ is the depreciation rate of housing. p_t, p_t^H and w_t are the final good price, the house

price and the wage rate, respectively. τ^C is a (constant) tax rate on consumption and house purchases, while τ^W is the labour income tax rate; T_t^r is a lump-sum tax. div_t^I, div_t^H and div_t^K are the dividends of the intermediate goods, construction and investment good sectors.

A large body of research finds that house prices (and other asset prices) are not closely tied to interest rates or to other macroeconomic fundamentals. For Spain, this is i.a. documented by Hott and Jokipii (2012). Building on Bernanke and Gertler (1999), we thus assume that housing investment decisions are subject to non-fundamental shocks.⁵ Specifically, the Ricardian household's Euler equation for housing capital is disturbed by a stationary exogenous shock (with zero unconditional mean), z_t^H :

$$1 = (1 - z_t^H) E_t \rho_{t,t+1}^r \{ (1 - \delta^H) p_{t+1}^H / p_{t+1} + U_{H,t+1}^r / U_{C,t+1}^r \} / (p_t^H / p_t), \quad (2)$$

where $U_{C,t+1}^r$ and $U_{H,t+1}^r$ are marginal utilities of consumption and of housing in $t+1$, while $\rho_{t,t+1}^r \equiv \beta_{t,t+1}^r U_{C,t+1}^r / U_{C,t}^r$ is the household's intertemporal marginal rate of substitution (external habit formation is assumed). We refer to z_t^H as a 'housing risk premium' shock, and to house price changes driven by z_t^H as housing 'bubbles.' Bubbles can, e.g., be interpreted as representing expectational biases (waves of optimism or pessimism) regarding future housing returns. A rise in z_t^H could also capture what Gorton (2010) calls a 'panic', i.e. a rise in subjective uncertainty about future asset prices which leads investors to dump these assets, thus leading to a fall in asset values.

3.1.2. The Spanish credit constrained household

The impatient household borrows domestically and internationally, subject to collateral constraints indexed to the value of her housing stock, $p_t^H H_t^c$: $D_{t+1}^{c,d} \leq \chi_t^{c,d} p_t^H H_{t+1}^c$ and $D_{t+1}^{c,f} \leq \chi_{t+1}^{c,f} p_t^H H_{t+1}^c$, where D_{t+1}^c and $D_{t+1}^{c,f}$ denote the household's domestic and foreign debt, at the end of period t . $\chi_t^{c,d}, \chi_t^{c,f} > 0$ are domestic and foreign loan-to-value (LTV) ratios. We posit *separate* domestic and foreign borrowing constraints, in order to disentangle the role of domestic and foreign credit supply shocks for the Spanish economy. These constraints are

⁵This is admittedly a simple (but widely used) short-cut for generating asset bubbles. Tractable micro-foundations for big time-varying risk-premia in large-scale DSGE models such as ours have not yet been developed. Adam et al. (2011) study simple models with learning (and near-rational beliefs) that can generate persistent and large asset price swings. Integrating this mechanism into the model here is beyond the scope of the present paper, but would be an interesting avenue for future research.

assumed to always bind in equilibrium (to ensure this, we posit that the rate of time preference of the constrained household is markedly greater than that of Ricardian and foreign agents).

The period t budget constraint of the constrained household is

$$(1+\tau^C)p_t C_t^c + (1+\tau^C)p_t^H I_t^{H,c} + T_t^c + (1+r_t^c)(D_t^{c,d} + D_t^{c,f}) = D_{t+1}^{c,d} + D_{t+1}^{c,f} + (1-\tau^W)w_t L_t^c, \quad (3)$$

where $I_t^{H,c} \equiv H_{t+1}^c - (1-\delta^H)H_t^c$ and T_t^c are housing investment and a lump sum tax, respectively.

r_t^c is the interest rate on household loans. We assume that domestic and foreign lenders charge the same household loan rate (available loan rate data do not allow to distinguish between rates charged by domestic and foreign lenders). That rate equals the policy rate plus an exogenous spread, $sp r_t^c$: $r_t^c = r_t + sp r_t^c$; this is a short-cut for modeling costly financial intermediation.⁶ The credit-constrained household's Euler equation for housing capital is disturbed by the same bubble shock z_t^H as the Ricardian household's Euler condition.

3.2. Spanish firms

3.2.1. Intermediate goods producers

In Spain, there is a continuum of intermediate goods indexed by $j \in [0,1]$ that are imperfect substitutes. Each good is produced by a single firm. Firm j has technology $Z_t^j = \theta_j (K_t^j)^\alpha (N_t^j)^{1-\alpha}$, where Z_t^j, K_t^j, N_t^j are the firm's output, capital stock and labour input. Total factor productivity (TFP), $\theta_j > 0$, is exogenous and common to all firms. As all firms face symmetric decision problems, they make identical choices; we thus henceforth omit the firm superscript j (the superscript i indicates that a variable pertains to the intermediate goods sector). In period t , an intermediate good firm issues domestic and foreign debt, denoted by $D_{t+1}^{i,d}$ and $D_{t+1}^{i,f}$, respectively. It faces the collateral constraints $D_{t+1}^{i,d} \leq \chi_t^{i,d} p_t^K K_{t+1}$, $D_{t+1}^{i,f} \leq \chi_t^{i,f} p_t^K K_{t+1}$, where p_t^K is the price of capital, while $\chi_t^{i,d}$ and $\chi_t^{i,f}$ are the firm's domestic and foreign LTV ratios. The law of motion of production capital is $K_{t+1} = (1-\delta^K)K_t + I_t^K$, with $0 < \delta^K < 1$, where I_t^K is gross investment. The period t dividend of an intermediate good firm is

$$div_t^i = p_t^i Z_t + D_{t+1}^{i,d} + D_{t+1}^{i,f} - (1+r_t^i)(D_t^{i,d} + D_t^{i,f}) - w_t L_t - p_t^K I_t^K - p_t \kappa_t^i, \quad (4)$$

⁶Kollmann et al. (2012) and Kollmann et al. (2013) develop models with a banking sector, in which interest rate spreads reflect bank operating costs. For simplicity, the paper here does not explicitly include a banking system. Here, we treat spreads as taxes on debt levied by borrowers; those taxes are rebated to borrowers in a lump sum fashion (lump sum taxes in borrowers' budget constraints are expressed net of those rebates).

where the (domestic and foreign) loan rate paid by the firm, r_t^i , equals the policy rate plus an exogenous spread, $spr_t^i: r_t^i=r_t+spr_t^i$. p_t^i is the price charged by the firm, while p_t^K is the price of production capital. At t , the firm faces a downward sloping demand curve for her output, with exogenous price elasticity $\varepsilon_t > 1$ that equals the substitution elasticity between different intermediate good varieties (see below). The firm bears a real cost $\kappa_t^i \equiv \frac{1}{2} \gamma_p (p_t^i - (1+\pi)p_{t-1}^i)^2 / p_t$ (in final good units) of changing her price, where π is the steady state inflation rate.

The firm maximizes the present value of dividends $V_t = div_t^i + E_t \rho_{t,t+1}^i (p_t/p_{t+1}) \mathcal{W}_{t+1}$, where $\rho_{t,t+1}^i$ is a stochastic discount factor that is strictly smaller than the intertemporal marginal rate of substitution of the Ricardian household: $\rho_{t,t+1}^i = (1-z_t^i) \rho_{t,t+1}^r$, where $0 < z_t^i < 1$ is an exogenous random variable. z_t^i might reflect a ‘principal agent friction’ (Hall (2011)) between the owner and the management of the firm. The firm’s Euler equations for debt and capital are:

$$1 = (1-z_t^i) E_t \rho_{t,t+1}^r (p_t/p_{t+1}) (1+r_{t+1}^i) + \lambda_t^{i,d}, \quad 1 = (1-z_t^i) E_t \rho_{t,t+1}^r (p_t/p_{t+1}) (1+r_{t+1}^f) + \lambda_t^{i,f}, \quad (5)$$

$$1 = (1-z_t^i) E_t \rho_{t,t+1}^r (p_t/p_{t+1}) \{ (1-1/\varepsilon_{t+1}) p_{t+1}^i MPK_{t+1} / p_t^K + (1-\delta) p_{t+1}^K / p_t^K \} + \lambda_t^{i,d} \chi_t^i + \lambda_t^{i,f} \chi_t^{i,f} + \Psi_t, \quad (6)$$

where $\lambda_t^{i,d}, \lambda_t^{i,f} \geq 0$ are the Lagrange multipliers of the domestic and foreign collateral constraints; $MPK_{t+1} \equiv \theta_{t+1} \alpha (K_{t+1})^{\alpha-1} (N_t)^{1-\alpha}$ is the date $t+1$ marginal product of capital. The term Ψ_t depends on the future marginal price-adjustment cost (Ψ_t is zero, in steady state). We assume that the wedge z_t^i is sufficiently big, so that the collateral constraints always bind in equilibrium.⁷ z_t^i induces fluctuations in the price of capital that are not related to (conventional) fundamentals; we thus refer to z_t^i as the ‘non-residential capital risk premium’ shock.

Price stickiness implies that the inflation rate of local intermediates, $\pi_t^i \equiv \ln(p_t^i/p_{t-1}^i)$ obeys an expectational Phillips curve, $\pi_t^i - \pi = \rho^i E_t (\pi_{t+1}^i - \pi) + \mathcal{G}^i (p_t^i / MC_t^i - \frac{\varepsilon}{\varepsilon-1})$, up to a linear approximation. Here MC_t^i is the marginal cost on intermediate good firms and $\varepsilon/(\varepsilon-1)$ is the steady state mark-up factor. ρ^i is the steady state subjective discount factor of intermediate good firms, and $\mathcal{G}^i > 0$ is a coefficient that depends on the cost of changing prices.

⁷An alternative assumption ensuring binding collateral constraints would be that firms have a tax incentive to issue debt (tax deductibility of interest payments); see Jermann and Quadrini (2012).

3.2.2. Spanish production of new capital goods

New residential and non-residential capital is generated using final output. Let $J_t^H = \Xi_t^H \cdot \xi^H(I_t^H)$ and $J_t^K = \Xi_t^K \cdot \xi^K(I_t^K)$ be the amounts of final output needed to produce $I_t^H \equiv I_t^{H,r} + I_t^{H,c}$ and I_t^K units of residential and non-residential capital, respectively. ξ^H and ξ^K are increasing, strictly convex functions, while Ξ_t^H and Ξ_t^K are exogenous shocks. The prices of housing and production capital are $p_t^H = \Xi_t^H \xi^H(I_t^H)$ and $p_t^K = \Xi_t^K \xi^K(I_t^K)$. The dividends of the two investment good sectors are $div_t^H = p_t^H I_t^H - p_t J_t^H$ and $div_t^K = p_t^K I_t^K - p_t J_t^K$, respectively.

3.2.3. Spanish final good sector

The final good is produced using the technology $Y_t = ((s_t^d)^{1/\nu} (D_t)^{(\nu-1)/\nu} + (1-s_t^d)^{1/\nu} (M_t)^{(\nu-1)/\nu})^{\nu/(1-\nu)}$, with $0.5 < s_t^d < 1$. $D_t = \left\{ \int_0^1 (Z_t^j)^{(\varepsilon_t-1)/\varepsilon_t} dj \right\}^{\varepsilon_t/(\varepsilon_t-1)}$ is an aggregate of the local intermediates, where $\varepsilon_t > 1$ is the exogenous substitution elasticity between varieties; M_t is a composite of intermediates imported from the REA and the ROW. The home bias parameter s_t^d is an exogenous random variable. The price (=marginal cost) of the final good is $p_t = (s_t^d (p_t^i)^{1-\nu} + (1-s_t^d) (p_t^m)^{1-\nu})^{1/(1-\nu)}$, where p_t^m is the import price index. The final good is used for domestic consumption and investment, and exported: $Y_t = C_t^r + C_t^c + G_t + J_t^H + J_t^K + X_t$, where G_t and X_t are government consumption and exports, respectively.

3.3. Wage setting in Spain

We assume a trade union that ‘differentiates’ homogenous labour hours provided by the two workers into imperfectly substitutable labour services; the union then offers those services to intermediate good-producing firms--the labour input N_t in those firms’ production functions is a CES aggregate of these differentiated labour services. The union sets nominal wage rates of the differentiated labour services to maximize the sum of the expected life-time utilities of the two workers, subject to a quadratic cost of changing the wage rate. This implies that the (log) growth rate of the nominal wage rate, $\pi_t^w \equiv \ln(w_t/w_{t-1})$, obeys the wage Phillips curve, $\pi_t^w - \pi^w = \beta^w E_t(\pi_{t+1}^w - \pi^w) + \lambda_w z_t^w$, up to a (log-)linear approximation; here β^w is a weighted average of the two households’ discount factors, π^w is steady state wage inflation, and $\lambda_w > 0$ is a coefficient that depends on the cost of changing nominal wages; z_t^w is the gap between a

weighted average of workers' marginal rates of substitution between consumption and leisure, and the real wage rate.

3.4. Spanish Government

The period t government budget constraint is $(1+r_t^s)D_t^s+p_tG_t=D_{t+1}^s+\tau^W w_t(L_t^r+L_t^c)+\tau^C\{p_t(C_t^r+C_t^c)+p_t^H(I_t^{H,r}+I_t^{H,c})\}+T_t^r+T_t^c$, where D_{t+1}^s is government debt; the interest rate paid by the government equals the policy rate plus an exogenous spread, $sp_r^s: r_t^s=r_t+sp_r^s$. Before the launch of the Euro, Spanish sovereign debt rates exceeded the REA rates. In December 1995 the EU Council announced that the Euro would irrevocably be launched on January 1, 1999. During the 1996-1998 run-up to the Euro, the spread between Spanish and REA sovereign debt yields was gradually eliminated—the spread was close to zero between the launch of the Euro and the 2010 eruption of the Spanish sovereign debt crisis.

Government consumption and lump-sum taxes respond to GDP growth and to public debt. Real government consumption is set according to the following policy rule:

$$c_t^G-c^G=\rho^G(c_{t-1}^G-c^G)+\tau_Y^G(\frac{1}{4}\ln(Y_{t-1}/Y_{t-5})-g_Y)-\tau_D^G(D_t^s/(p_tY_t)-\bar{D})+\varepsilon_t^G, \quad (7)$$

where $c_t^G\equiv G_t/Y_t$ denotes government consumption normalized by real GDP, while g_Y is the steady state quarterly growth rate of GDP; ε_t^G is a white noise disturbance.⁸

3.5. Euro Area monetary policy

Euro Area (EA) monetary policy is set as a function of EA inflation and GDP growth, according to an interest rate feedback rule:

$$r_t=(1-\rho^R)\bar{r}+\rho^R r_{t-1}+(1-\rho^R)[\tau_\pi^R(\frac{1}{4}\ln(P_t^{EA}/P_{t-4}^{EA})-\pi)+\tau_Y^R(\frac{1}{4}\ln(Y_t^{EA}/Y_{t-4}^{EA})-g_Y^{EA})]+\varepsilon_t^R, \quad (8)$$

where P_t^{EA} and Y_t^{EA} are the EA CPI and EA real GDP; ε_t^R is a white noise disturbance.

3.6. The REA and ROW blocks

The models of the REA and ROW economies are simplified structures with fewer shocks; specifically, the REA and ROW blocks each consist of a New Keynesian Phillips curve, a budget constraint for a representative household, demand functions for domestic and imported goods (derived from CES consumption good aggregators), and a production technology that uses labour as the sole factor input. The REA and ROW blocks abstract from capital

⁸The estimated model also assumes government investment (set according to a rule similar to (7)); government capital raises the productivity of intermediate good producers.

accumulation. In the REA and the ROW there are shocks to labour productivity, price mark-ups, the subjective discount rate, the relative preference for domestic vs. imported goods, as well as monetary policy shocks.

3.7. Exogenous shocks

The estimated model assumes 44 exogenous shocks. Other recent estimated DSGE models likewise assume many shocks (e.g., Kollmann (2013)), as it appears that many shocks are needed to capture the key dynamic properties of macroeconomic and financial data. The large number of shocks used here is also dictated by the fact that we use a large number of observables (39) for estimation, to shed light on different potential causes of the Spanish boom-bust cycle. Note that the number of shocks has to be at least as large as the number of observables to avoid stochastic singularity of the model.

4. Model solution and econometric approach

We compute an approximate model solution by linearizing the model around its deterministic steady state. Following the recent literature that estimates DSGE models (e.g., Smets and Wouters (2007)), we calibrate a subset of parameters to match long-run data properties, and we estimate the remaining parameters using Bayesian methods.⁹ The 39 observables used in estimation are listed in the Data Appendix. The estimation uses quarterly data for the period 1995Q1- 2013Q2.

Specifically, we calibrate the model so that steady state ratios of main economic aggregates to GDP match average historical ratios for Spain. The Spanish steady state ratios of private consumption, residential investment and non-residential investment to GDP are calibrated at 59.0%, 6.9% and 12.1%, respectively. The steady state shares of Spanish and REA GDP in world GDP are 1.3% and 13.0%, respectively. The steady state trade share ($0.5 * (\text{exports} + \text{imports}) / \text{GDP}$) is set at 28%, and the quarterly depreciation rate of residential (non-residential) capital is 2.5% (1.0%). We set the steady state government debt/annual GDP ratio at 60% of GDP. The Spanish steady state real GDP growth rate and inflation are set at 0.55% and 0.5% per quarter respectively.

The steady state rates of time preference of the Spanish Ricardian household and of foreign (ROW and REA) agents are set at 0.5% per quarter. The steady state rates of time preference of the credit-constrained household and of intermediate goods firms are set at a

⁹ We use DYNARE (Adjemian *et al.*, 2011) to solve the linearized model and to perform the estimation.

markedly higher value, 4% per quarter, to ensure that the collateral constraints of these agents bind in all periods. The steady state private [government] borrowing rate spread is set at 0.45% [0%] per quarter. The average ratio of the bank debt of non-financial firms divided by the productive capital stock is 0.75, in the Spanish data. We thus set the steady state total firm LTV ratio (sum of domestic and foreign LTV ratios) at 0.75. 34.6% of the liabilities of Spanish banks were foreign, during our sample period; hence, we set the steady state foreign LTV ratio of Spanish firms at 0.26 ($=0.346 \cdot 0.75$), and the steady domestic LTV ratio of firms at 0.49 ($=0.75 - 0.26$). Calza et al. (2013) report that the typical LTV ratio for Spanish housing loans is 0.70. We thus set the Spanish steady state ‘total’ household LTV ratio at 0.70. We estimate the steady state household domestic LTV ratio through the lens of our model. The key results are robust to changing the steady state LTV ratios (in a reasonable range).

5. Estimation results

5.1. Posterior parameter estimates

The posterior estimates of key structural parameters are reported in Table 1. (Estimates of all other parameters can be found in the appendix.) The steady state consumption share of the Ricardian household is estimated at 0.52. Estimated habit persistence is sizable ($\eta=0.73$), which indicates a sluggish adjustment of consumption to income shocks. The substitution elasticity for housing services σ is estimated at 0.56, i.e. consumption and housing are complements. Most forcing variables are highly persistent; e.g., the estimated autocorrelations of the (exogenous) LTV ratios and interest rate spreads are in the range of 0.9. According to the estimates, innovations to LTV ratios are volatile (standard deviations in the range of 4%-6%). The model estimates also suggest substantial nominal and wage stickiness.¹⁰ The model properties discussed in what follows are evaluated at the posterior mode of the model parameters.¹¹

5.2. Dynamic effects of financial shocks

The model predicts standard responses of macroeconomic variables to TFP shocks and to monetary and fiscal policy shocks. We thus focus here on financial shocks that played a key role for the boom and bust cycle of the Spanish economy. Fig. 2 shows responses to negative

¹⁰ The price and wage Phillips curves here are observationally equivalent to Phillips curves implied by Calvo (1983) price/wage setting. Our estimates imply a (Calvo) average price and wage change interval of 4 quarters.

¹¹ We also computed model-implied statistics (impulse responses, variance decompositions and historical decompositions) at random parameter sub-draws of the Metropolis sample. Posterior means of those statistics are very close to statistics evaluated at the posterior mode of the model parameters (results available on request).

shocks to risk premia on housing and non-residential capital and to the interest rate spread facing private Spanish borrowers, as well as to positive shocks to LTV ratios. All responses pertain to 1 standard deviation exogenous innovations. Responses of the trade balance (normalized by GDP) and of the real household loan rate represent differences from unshocked paths; responses of other variables are expressed as relative deviations from unshocked paths.

The financial shocks considered in Figure 2 all boost aggregate demand in Spain, and lower the Spanish trade balance—however, they have differing effects on the *composition* of aggregate demand. Given nominal rigidities, the rise in aggregate demand triggers a persistent rise in Spanish GDP and employment; the demand boost also raises Spanish inflation (at least initially), and hence induces a Spanish real exchange rate appreciation. These responses are consistent with key facts about the Spanish economy, prior to the financial crisis, namely strong growth, high inflation and a deteriorating trade balance.

Negative shock to Spanish housing risk premium (positive house price bubble), Fig. 2.a.

A fall in the Spanish housing risk premium z_t^H (see (2)) raises Spanish residential investment and the Spanish house price. The housing boom crowds out private consumption (as households devote a greater share of their income to the purchase of new houses), and hence the saving rate (saving/GDP) rises. Non-residential investment rises weakly on impact, before falling persistently below the unshocked path. This is due to the fact that Spanish real interest rates fall in the short term, due to the rise in Spanish inflation, but rise over the medium term (as the price level reverts towards its pre-shock path). However, the total investment rate (total investment/GDP) rises strongly, due to the much more pronounced rise in residential investment, and the trade balance falls.

Negative shock to risk premium on non-residential capital, Fig. 2.b.

A fall in the risk premium on Spanish non-residential capital z_t^i (see (5),(6)) strongly raises non-residential investment and the price of capital. Consumption and residential investment are crowded out initially, but rise in the medium run (due to the persistent rise in GDP). The initial fall of consumption (and its subsequent modest rise) imply that the saving rate rises. The total investment rate rises too; the trade balance falls.

Negative shock to private borrowing rate spread in Spain, Fig. 2.c.

Fig. 2.c shows the effects of a negative simultaneous shock to the Spanish private borrowing spreads (spr_t^c and spr_t^i). This shock induces a *simultaneous* rise in private consumption and in residential and non-residential investment. The saving rate falls, and the investment rate increases, and thus the trade balance deteriorates.

Positive shocks to Spanish household/firm loan-to-value (LTV) ratios, Fig. 2.d. & 2.e

Shocks to firm LTV ratios and to household LTV ratios have different effects. However, *domestic* and *foreign* LTV ratio shocks have identical macroeconomic consequences. This follows from the fact that the Ricardian household is indifferent between lending domestically or internationally, and has free access to the international financial market. We view these model features as realistic, given the absence of exchange rate uncertainty and the high degree of financial integration in the Euro Area. In response to an expansion in the *foreign* LTV ratio, the constrained household/firm borrows more abroad. When a rise in *domestic* LTV ratios occurs, the higher loan demand is *indirectly* funded abroad, as the Ricardian household accommodates the rise in domestic loan demand, by borrowing abroad (or by reducing her international lending). Thus, domestic and foreign LTV ratio shocks have the same effects on aggregate demand and on GDP, i.e. only *total* LTV ratios matter for real activity.

Fig. 2.d shows that a positive shock to the credit constrained *household's* LTV ratio raises aggregate consumption and residential investment, but that it crowds out non-residential investment; the saving rate and the total investment rate fall.¹² A loosening of the borrowing constraint faced by *Spanish firms* boosts investment in productive capital, but it (initially) crowds out consumption and residential investment (Fig. 2.e). However, the rise in non-residential investment exceeds the fall in residential investment, and thus the total investment/GDP ratio rises; due to the fall in consumption, the saving rate rises too. Positive shocks to household and firm LTV ratios both worsen the trade balance.

In summary, reductions in risk premia on Spanish residential and non-residential capital, and a rise of the firm LTV ratio all raise the Spanish saving and investment rates. By contrast, a rise in the household LTV ratio *lowers* the saving and investment rates. A negative shock to Spanish interest rate spreads lowers the saving rate, but raises the investment rate.

¹²Steady state non-residential investment is twice as large as residential investment; the fall in non-residential investment and the rise in GDP dominate the rise in residential investment, and the total investment/GDP ratio falls.

5.3. Business cycle moments implied by posterior parameter estimates

Table 2 reports model-predicted and empirical standard deviations of key Spanish, REA and ROW macroeconomic variables, as well as their correlations with Spanish GDP. The empirical statistics are based on quarterly data for 1995Q1-2013Q2. (The statistics for all variables, except net exports/GDP, pertain to logged first differences.) Empirically, the growth rates of Spanish private and government consumption and investment are more volatile than Spanish GDP growth; these variables are all positively correlated with Spanish GDP growth. Spanish net exports (normalized by GDP) are highly volatile, and weakly countercyclical. Spanish inflation (GDP deflator) is less volatile than the GDP growth rate, while the growth rate of the Spanish house price and the rate of appreciation of the Spanish effective nominal exchange rate are more volatile than GDP growth. Spanish GDP growth is positively correlated with REA GDP growth, but uncorrelated with ROW GDP growth.

The estimated model captures most of these empirical regularities rather closely. In particular, it captures the fact that Spanish domestic demand components are more volatile than Spanish GDP, and it also matches the high volatility of Spanish net exports, of the Spanish house price and of the Spanish effective exchange rate.¹³

5.4. Variance shares accounted for by different shock types

Table 3 reports the percentage shares of predicted variances (of variables considered in Table 2) that are accounted for by different types of exogenous shocks. We group together related shocks, for the sake of legibility. Specifically we consider these (groups of) shocks originating in Spain: (1) Housing risk premium; (2) (Non-residential) Capital risk premium; (3) Household LTVs; (4) Firm LTVs; (5) Interest rate spreads; (6) TFP and investment efficiency ('Technology'); (7) Price mark-up; (8) Wage mark-up; (9) Fiscal policy; (10) All shocks originating in the REA and the ROW, as well as shocks to trade flows due to changes in the Spanish final good home bias (see Section 3.2.3) are summarized in a group labeled 'Trade'; (11) the remaining shocks are markedly less important for the main Spanish variables, and are hence combined into a category labeled 'Other' shocks.

Spanish financial shocks (shocks to risk premia, LTV ratios and spread) explain about 20% of the variance of Spanish net exports and of growth rates of Spanish GDP and hours

¹³ The model-predicted correlation between Spanish and REA GDP growth (0.12) is positive but smaller than the empirical correlation (0.69). This reflects the assumption that shocks originating in Spain and in the REA are independent. Standard open economy models are generally unable to generate realistic cross-country output correlations, when independent shocks are assumed (e.g., Kollmann (2013)). Empirically, aggregate supply and demand shocks are positively correlated across countries. Model versions with correlated Spanish and REA shocks generate realistic cross-country output correlations.

worked, and 12% of the variance of Spanish inflation; about half of those variance shares are accounted for by shocks to Spanish LTV ratios and interest rate spreads. Household LTV shocks account for 40% of the variance of Spanish consumption growth. Firm LTV shocks account for a non-negligible share of the variance of non-residential investment (5%), but matter very little for the other variables. About 80% of the variances of Spanish non-residential investment growth is driven by non-residential capital risk premium (bubble) shocks, while an equivalent share of the variance of residential investment growth and of the growth rate of house prices is accounted for by housing risk premium shocks. Only about 6% of non-residential investment variance is explained by LTV and spread shocks.

Trade shocks account for about 30% of the variance of Spanish GDP growth. Although foreign factors play a non-negligible role, fluctuations in Spanish real activity are thus largely driven by local factors--domestic technology shocks (8%), price mark-up shocks (12%) and fiscal policy shocks (11%) account for non-negligible Spanish GDP variance shares. As Spanish GDP is much smaller than REA and ROW output, more than 98% of the variance of REA and ROW GDP growth and inflation is driven by REA and ROW shocks.

5.5. Decomposing Spanish historical time series

To quantify the role of the different shocks as drivers of historical Spanish macro data, we plot the estimated contributions of the 11 groups of shocks described in Section 5.4 to the following Spanish time series: the nominal trade balance divided by nominal GDP; nominal GDP minus private and government nominal consumption normalized by nominal GDP (referred to as ‘saving rate’ in what follows); nominal total investment divided by nominal GDP (‘investment rate’); the year-on-year GDP growth rate; the real exchange rate. See Fig. 3.a-3.e, where lines with black lozenges show the historical data. In each Figure, the horizontal line represents the steady state value (of the variable plotted in the Figure). Vertical bars above the steady state (horizontal) line represent positive shock contributions to a variable, while bars below the horizontal line represent negative contributions. Sums of all shock contributions equal the historical data.

As discussed in Section 2, the dynamics of the Spanish trade balance is dominated by a sizable expansion of the investment rate during the boom period, and a subsequent sharp correction. The historical decomposition shows that negative shocks to risk premia (bubbles) on housing and non-residential capital were major drivers of the long-lasting Spanish investment boom before the 2008-09 global financial crisis (see Fig. 3.c), and thus these shocks contributed noticeably to the gradual worsening of the Spanish trade balance (Fig.

3.a). In 2007 (i.e. just before the start of the financial crisis), the bubble shocks contributed roughly -2 percentage points to the observed Spanish net exports/GDP ratio of close to -6%. (The housing risk premium shock was the main driver of the expansion of residential investment and of the real house price in Spain, while the non-residential capital risk premium shock was the main driver of the rise in non-residential investment.)

Shocks to LTV ratios too had a noticeable effect on saving, investment and the trade balance, during the boom phase. For the saving rate and the trade balance, the household LTV ratio shocks mattered more than firm LTV shocks. According to our estimates, the late 1990s saw a tightening of household LTV ratios, as is evident from the growing *positive* contribution of household LTV shocks to the Spanish saving rate (Fig. 3.b) and trade balance between 1997 and 1999. However, after 1999 (launch of the Euro), the estimates indicate a gradual loosening in household LTV constraints that lasted until the financial crisis.¹⁴ During the global financial crisis, a sharp tightening of household LTV constraints occurred. According to the estimates, firm LTV constraints too tightened in the late 1990s and then loosened gradually. (This manifested itself in a *negative* contribution of the firm LTV shocks to saving and investment rates in the late 1990s that subsequently became less negative, and then turned positive in 2004.) However, that loosening only had a non-negligible positive effect on the saving and investment rates in the last two years before the financial crisis—and even then its effect on the trade balance remained very modest.

During the boom phase, the convergence of Spanish rates to REA rates (i.e. negative shocks to Spanish borrowing rate spreads) had a sizable and persistent negative effect on the Spanish saving rate, and a smaller positive effect on the investment rate; thus, the spread shocks made a significant and persistent contribution to the deterioration of the Spanish trade balance, during that phase: between the late 1990s and the financial crisis, the spread shocks lowered the Spanish trade balance/GDP ratio by about 2.3 percentage points.

Our estimates suggest that the expansion in Spanish loan demand triggered by the housing and non-residential capital bubbles and by falling spreads was not counteracted by a tightening of LTV ratios; given the magnitude of asset price increases, the resulting credit expansion was substantial. Especially after 2004 we even identify a sizable ‘active’ credit loosening, in the form of a marked rise in LTV ratios, that accentuated the worsening of the Spanish trade balance. According to our estimates, technology or fiscal policy shocks only had a very minor influence on Spanish saving and investment rates in the boom phase.

¹⁴ Fig. 3.a. and 3.b. show that, after 1999, the contribution of the household LTV shocks to the trade balance and the saving rate became smaller over time, and turned negative in 2005. As discussed in Section 5.2., a rise in the household LTV ratio lowers the trade balance and the saving rate.

Negative risk premium shocks and the loosening of LTV constraints also contributed noticeably to strong Spanish GDP growth before the financial crisis (see Fig. 3.d). The boom saw strong growth in the employment of unskilled labour that was also fuelled by immigration. Hence, average Spanish labour productivity and measured TFP *fell* during the boom years. The model interprets the strong employment growth (accompanied by low productivity growth) as induced partly by a fall in the wage mark-up.

As discussed above (and documented in Fig. 3.e), the Spanish real effective exchange rate appreciated steadily until 2009, and then depreciated until 2013. The appreciation during the boom reflects strong domestic demand driven i.a. by the fall in Spanish interest rate spreads and in housing risk premia, as well as the rise in household LTV ratios. Low productivity growth during the boom also contributed to high Spanish inflation and the real exchange rate appreciation (but low wage mark-ups had an offsetting effect on inflation).

The 2008-09 ‘Great Recession’ was characterized by a strong decline of the Spanish investment rate. Our estimates suggest that this was largely driven by a rise in housing and non-residential capital risk premia that triggered a fall in the value of capital. In addition, household LTV constraints tightened sharply in 2008. This combination of shocks explains also the relatively modest fall of the Spanish savings rate in 2008-2009. Due to the strong decline of investment, the trade balance improved markedly in 2008 (the global trade collapse during the recession also contributed to this). The 2008-09 drop in Spanish GDP too is mostly explained by the financial factors--in particular by a tightening of household LTV constraints, and the rise in risk premia on housing and non-residential capital. Firm credit constraints tightened later and more gradually, and contributed much less to the slump.

While the non-residential investment/GDP ratio began to recover gradually after 2009, residential investment (and house prices) continued to fall after 2009 and thus exerted a drag on total investment and on GDP over the whole remaining period. In addition, Spanish interest rate spreads started to rise during the 2010-11 sovereign debt crisis. However, financial shocks only explain a small part of the persistent Spanish output slump, in the aftermath of the 2008-09 recession. Our estimates suggest that, after 2009, fiscal austerity, and a rise in price and wage mark-ups too had a strong negative effect on GDP growth.¹⁵ While the fall of the total investment rate continued to contribute to external rebalancing, in the aftermath of the 2008-09 recession, a drop in the saving rate partly offset the fall in the investment rate. (Two major facts explain the fall in the saving rate, namely the continued fall

¹⁵ The model predicts that GDP falls when price and wage mark-ups rise. The negative contribution of mark-up increases to GDP growth during and after the recession is clearly noticeable in Fig. 3.d. Spanish firm-level micro data also suggest a rise in price mark-ups after the financial crisis; see Montero and Urtasun (2013).

in house price, and the muted fall in Spanish wages, interpreted in the model as a rise in the wage mark-up, that stabilizes the consumption of credit-constrained households.) After 2010, Spanish net exports were also positively affected by a rise in export demand, due to the gradual recovery of the world economy, and by strong Spanish productivity growth--these factors also had a positive influence on GDP growth, and on the saving rate (as collateral constraints and habit persistence dampen the expansion of consumption, in response to a positive productivity shock).

5.6. Sensitivity analysis: the role of shocks to risk premia and to loan-to-value ratios

We also estimated a model variant without housing and non-residential capital risk premium (bubble) shocks. That model variant fits the observables less well than the baseline model. The log marginal likelihood (ML) of the baseline model is 5356.34, while the log ML of the model variant without bubble shocks is 5210.14. (The ML measures the out-of-sample predictive ability of the model.) This implies a Bayes factor (ratio of posterior odds to prior odds) of $e^{146.20}$ that massively favours the baseline model. In the ‘no-bubbles’ model variant, the estimated variances of household and firm LTV ratios are close to 100%, and thus unrealistically large. The predicted standard deviations of the GDP growth rate (0.81%), residential investment growth (7.90%), the net exports/GDP ratio (4.43%) and of other key macro variables are larger than in the baseline model, and hence less close to the empirical moments (0.66%, 2.82% and 3.74%, respectively), which also indicates that the ‘no-bubbles’ variant fits the data less closely.

In addition, we considered a model variant with constant household and firm LTV ratios (while allowing for residential and non-residential bubble shocks). The log ML of that model variant is 5314.24. Hence, that variant too fits the observables less well than the baseline model—though better than the ‘no-bubbles’ model variant. Compared to the baseline model, the model version without LTV shocks likewise generates predicted standard deviations of key macro variables that are larger and less close to the data (predicted standard deviations of GDP and residential investment growth, and of the net exports/GDP ratio: 0.80%, 3.39% and 5.99%).

Overall, these experiments suggest that residential and non-residential capital risk premium shocks are more important than exogenous LTV ratio shocks for explaining the volatility of real activity.

6. Concluding remarks

This paper has used an estimated three-country New Keynesian model with financial frictions to study the joint dynamics of foreign capital inflows and real activity during the recent boom-bust cycle of the Spanish economy. The estimates suggest that a falling risk premium on Spanish housing capital, a loosening of collateral constraints for Spanish households and firms, as well as the fall in the interest rate spread between Spain and the REA fuelled the persistent rise in foreign capital flows to Spain during the boom that preceded the global financial crisis. During and after the global financial crisis, falling house prices, and a tightening of collateral constraints for Spanish borrowers contributed to a sharp reduction in capital flows to Spain, and to a persistent slump in Spanish real activity. The credit crunch was especially pronounced for Spanish household; firm credit constraints tightened later and more gradually, and contributed much less to the slump.

Data Appendix

The model is estimated using GDP (real and deflator) growth rates and GDP (real and nominal) shares. Specifically, the following 39 variables are used as observables:

- GDP growth (3) (Spain, REA and ROW),
- GDP shares (13): trade balances (Spain, REA, ROW), consumption, government consumption, government investment, transfers, construction investment, total investment, government deficit and debt, net foreign asset, loans to firms.
- Prices (10): GDP (Spain, REA, ROW), consumption, import, export, construction, house, government purchases, total investment.
- Spain, REA, Euro-Area and ROW (US) money market rates (3 months); Spanish government bond rates; Spanish household and firm loan rates (7).
- Effective exchange rates (Spain and REA), wages, employment, number of retirees and number of labour market non-participants (6).

The effective exchange rate, the ROW price index and ROW GDP are based on trade-weighted averages across Spain's main trade partners. Data sources: Eurostat, ECB, Bank of Spain.

References

- Adalet, M., B. Eichengreen (2007). Current account reversals--always a problem?, In: R. Clarida (ed.), 'G7 Current Account Imbalances,' University of Chicago Press.
- Adam, K., P. Kuan, A. Marcet (2011). House price booms and the current account. NBER Macroeconomics Annual 2011, vol. 26, 77–122.
- Adjemian, S., H. Bastani, M. Juillard, F. Mihoubi, G. Perendia, M. Ratto, S. Villemot (2011). Dynare: reference manual, Version 4, Dynare Working Paper 1.
- Aizenman, J., Y. Jinjark (2013). Real estate valuation, current account and credit growth patterns, before and after the 2008-09 crisis. NBER Working Paper No 19190.
- Bernanke, B., M. Gertler (1999). Monetary policy and asset price volatility. Federal Reserve Bank of Kansas City Economic Review 1999 4, 17-51.
- Calza, A., T. Monacelli, L. Stracca (2013). Housing finance and monetary policy. Journal of the European Economic Association 11, 101-122.
- Calvo, G. (1983). Staggered prices in a utility-maximizing framework. Journal of Monetary Economics 12, 383–398.
- Calvo, G. (1998). Capital flows and capital-market crises: the simple economics of sudden stops. Journal of Applied Economics 1, 35-54.
- Chinn, M., B. Eichengreen, H. Ito (2013). A forensic analysis of global imbalances. Working Paper, University of Wisconsin.
- Eggertsson, G., P. Krugman (2012). Debt, deleveraging, and the liquidity trap: a Fisher-Minsky-Koo approach. Quarterly Journal of Economics 127, 1469-1513.
- Erceg, C., L. Guerrieri, C. Gust (2006). SIGMA: a new open economy model for policy analysis. International Journal of Central Banking 2, 1–50
- Fernández-Villaverde, J., L. Garicano, T. Santos (2013). Political credit cycles: the case of the Eurozone. Journal of Economic Perspectives 27, 145-166.
- Gomes, S., P. Jacquinot, M. Pisani (2012). The EAGLE: a model for policy analysis of macroeconomic interdependence in the Euro Area. Economic Modelling 29, 1686–1714.
- Gorton, G. (2010). Slapped by the invisible hand: the panic of 2007. Oxford University Press.
- Guerrieri, V., G. Lorenzoni (2012). Credit crises, precautionary savings and the liquidity trap. Working Paper, Northwestern University.
- Hall, R. (2011). The high sensitivity of economic activity to financial frictions. Economic Journal 121, 351-378.
- Hott, C. and T. Jokipii (2012). Housing Bubbles. Working Paper, Swiss National Bank.

- In't Veld, J., R. Raciborski, M. Ratto, W. Roeger (2011). The recent boom-bust cycle: the relative contribution of capital Flows, credit Supply and asset bubbles. *European Economic Review* 55, 386-406.
- in't Veld, J., A. Pagano, R. Raciborski, M. Ratto, W. Roeger (2012). Imbalances and rebalancing scenarios in an estimated structural model for Spain, *European Economy Economic Papers* 458.
- Jermann, U., V. Quadrini (2012). Macroeconomic effects of financial shocks. *American Economic Review* 102, 238-271.
- Justiniano, A., G. Primiceri, A. Tambalotti (2013). Household leveraging and deleveraging. Working Paper, Federal Reserve Bank of Chicago.
- Justiniano, A., G. Primiceri, A. Tambalotti (2014). The effects of the saving and banking glut on the U.S. economy. *Journal of International Economics* 92, S52-S67.
- Kiyotaki, N., J. Moore (1997). Credit cycles. *Journal of Political Economy* 105, 211-248.
- Kollmann, R. (1998). U.S. trade balance dynamics: the role of fiscal policy and productivity shocks. *Journal of International Money and Finance* 17, 637-669.
- Kollmann, R. (2013). Global banks, financial shocks and international business cycles: evidence from an estimated model. *Journal of Money, Credit and Banking* 45, 159-195.
- Kollmann, R., W. Roeger, J. in't Veld (2012). Fiscal policy in a financial crisis: standard policy vs. bank rescue measures. *American Economic Review* 102, 77-81
- Kollmann, R., M. Ratto, W. Roeger, J. in't Veld, L. Vogel (2014). What drives the German current account? And how does it affect the other EU member states? CEPR DP 9933.
- Montero, J., A. Urtasun (2013). Recent developments in non-financial corporations' mark-ups. *Bank of Spain Economic Bulletin* (December), 3-10.
- Obstfeld, M., K. Rogoff (2010). Global imbalances and the financial crisis: products of common causes. In: *Asia and the Global Financial Crisis*. San Francisco Fed, pp.131-172.
- Ratto M., W. Roeger, J. in 't Veld (2009). QUEST III: an estimated open-economy DSGE model of the Euro Area with fiscal and monetary policy. *Economic Modelling* 26, 222-233.
- Reis, R. (2013). The Portuguese slump-crash and the Euro Crisis. *Brookings Papers on Economic Activity*, 143-193.
- Smets, F., R. Wouters (2007). Shocks and frictions in US business cycles: a Bayesian DSGE approach. *American Economic Review*, 97, 586-606.

Table 1. Prior and posterior distributions of key model parameters

	Prior distributions			Posterior distributions	
	Distribution	Mean	s.d.	Mean	s.d.
(1)	(2)	(3)	(4)	(5)	(6)
Household preferences					
η	Beta	0.70	0.10	0.73	0.05
κ	Gamma	1.00	0.40	1.31	0.39
σ	Gamma	0.50	0.10	0.56	0.11
Steady state consumption share of Ricardian households					
C^r/C	Beta	0.50	0.10	0.52	0.05
Autocorrelations of forcing variables					
$\rho(\chi^{c,d})$	Beta	0.85	0.07	0.88	0.06
$\rho(\chi^{c,f})$	Beta	0.85	0.07	0.90	0.05
$\rho(\chi^{i,d})$	Beta	0.85	0.07	0.86	0.08
$\rho(\chi^{i,f})$	Beta	0.85	0.07	0.92	0.04
$\rho(spr^c)$	Beta	0.85	0.07	0.84	0.05
$\rho(spr^i)$	Beta	0.85	0.07	0.93	0.01
Standard deviations (%) of innovations to forcing variables					
$sd(\chi^{c,d})$	Gamma	4.0	1.6	5.58	2.38
$sd(\chi^{c,f})$	Gamma	4.0	1.6	5.85	1.84
$sd(\chi^{i,d})$	Gamma	4.0	1.6	4.16	1.65
$sd(\chi^{i,f})$	Gamma	4.0	1.6	5.87	1.94
$sd(spr^c)$	Gamma	1.0	0.3	0.83	0.19
$sd(spr^i)$	Gamma	1.0	0.3	0.92	0.92

Notes: Cols. (1) lists model parameters; $\rho(x), sd(x)$ are the autocorrelation of variable ‘ x ’ and the standard deviation of the innovation to x , respectively. $\chi^{c,d}$ and $\chi^{c,f}$ are the exogenous LTV ratios facing Spanish credit constrained households when borrowing from domestic and foreign lenders, respectively. $\chi^{i,d}$ and $\chi^{i,f}$: corresponding domestic and foreign LTV ratios for Spanish intermediate good producing firms. spr^c and spr^i : interest rate spreads for loans to the Spanish credit-constrained household and intermediate goods-producing firms. Col. (2) show the distribution function of the prior. Cols. (3) and (4): means and the standard deviations (s.d.) of the prior distributions of listed parameters. Cols. (5) and (6): means and standard deviations of the posterior parameter distributions (computed using Random Walk Metropolis algorithm, 400000 draws).

Table 2. Model-predicted and empirical business cycle statistics (1995Q1-2013Q2)

	Model		Data	
	Standard deviation, %	Correl. with Spanish GDP	Standard deviation, %	Correl. with Spanish GDP
(1)	(2)	(3)	(4)	(5)
Spanish variables				
GDP	0.74	1.00	0.66	1.00
Consumption (private)	1.07	0.51	0.91	0.80
Government consumption	1.46	0.41	1.09	0.34
Non-residential investment	3.00	0.49	2.82	0.73
Residential investment	4.14	0.46	3.15	0.72
Hours worked	0.74	0.75	0.93	0.92
Net exports/GDP	3.94	-0.03	3.74	-0.15
Nominal exchange rate	4.44	-0.20	4.20	-0.04
GDP deflator	0.77	0.10	0.48	0.60
House price	2.54	0.15	2.59	0.58
REA variables				
GDP	0.85	0.12	0.64	0.69
GDP deflator	0.39	0.13	0.30	-0.03
ROW variables				
GDP	1.00	0.19	0.79	0.07
GDP deflator	2.09	0.17	1.89	0.22

Note: For the variables listed in Column (1), the Table reports model-predicted standard deviations and correlations with Spanish GDP (Columns (1)-(2)) and the corresponding empirical statistics based on quarterly data for the period 1995Q1-2013Q2 (Columns (3)-(4)). The statistics for all variables except net exports/GDP pertain to logged first differences of these variables. 'Inflation' is a quarter-to-quarter rate. The 'Nominal exchange rate' is the effective exchange rate between Spain and the ROW (a rise represents a Spanish appreciation). REA: Rest of Euro Area (EA less Spain); ROW: Rest of world.

Table 3. Shares (in %) of model-predicted variances accounted for by different shock types

	Financial shocks											All financial shocks	LTV & spread shocks
	Housing risk premium	Capital risk premium	Household LTV	Firm LTV	Interest rate spreads	Tech-nology	Price mark-up	Wage mark-up	Fiscal policy	Trade	Other		
(1)	(2)	(3)	(4)	(5)	(6)	(7)	(8)	(9)	(10)	(11)	(12)	(13)	(14)
Spanish variables													
GDP	4.11	5.80	7.98	0.38	0.66	7.98	12.40	4.80	11.10	29.86	14.88	18.95	9.03
Consumption (private)	6.05	0.74	40.26	0.47	2.32	2.63	2.89	0.71	0.90	20.45	22.53	49.86	43.06
Government consumption	3.82	1.21	1.84	0.24	0.56	2.79	5.74	8.82	61.79	8.22	4.90	7.69	2.65
Non-residential investment	0.22	79.18	0.43	5.04	0.81	0.84	3.37	0.83	0.19	7.95	1.08	85.70	6.29
Residential investment	81.95	0.07	5.61	0.04	0.34	0.12	0.41	0.21	0.07	1.17	9.96	88.03	6.00
Hours worked	5.49	5.18	9.43	0.33	0.77	6.28	16.84	13.25	4.80	19.45	18.13	21.22	10.54
Net exports/GDP	6.74	2.89	4.68	0.62	9.65	0.98	3.64	4.56	7.38	54.68	4.14	24.60	14.95
GDP deflator	2.48	2.24	6.28	0.18	0.65	16.64	25.11	17.62	2.55	19.78	6.43	11.84	7.12
House price	74.24	0.04	0.20	0.01	0.05	0.68	0.41	0.48	0.13	2.32	21.41	74.55	0.26
Nominal Exchange rate	0.03	0.01	0.00	0.00	0.03	0.04	0.00	0.01	0.02	98.62	1.23	0.07	0.03
REA variables													
GDP	0.02	0.00	0.01	0.00	0.00	0.04	0.02	0.01	0.01	98.29	1.57	0.03	0.01
GDP deflator	0.47	0.14	0.11	0.03	0.84	0.39	0.11	0.19	0.41	95.14	2.13	1.60	0.99
ROW variables													
GDP	0.00	0.00	0.00	0.00	0.00	0.03	0.00	0.00	0.00	99.97	0.00	0.00	0.00
GDP deflator	0.00	0.00	0.00	0.00	0.00	0.13	0.00	0.00	0.00	99.86	0.00	0.00	0.00

Note: this Table reports % shares of the model-predicted variances of variables listed in Column (1) that are accounted for by the types of shocks listed above Columns (2)-(14). The sum of the shares listed in Columns (2)-(13) is 100%. Column (13) reports the variance share explained by financial shocks (Columns (2)-(6)), while Column (14) shows the variance share explained by LTV shocks and by shocks to Spanish interest rate spreads (sum of Columns (4)-(6)).

See Section 5.4 for discussion of shock types. The variances of all variables except net exports/GDP pertain to logged first differences of these variables. ‘Inflation’ is a quarter-to-quarter rate. The ‘Nominal exchange rate’ is the effective exchange rate between Spain and the ROW (a rise represents a Spanish appreciation). REA: Rest of Euro Area (EA less Spain); ROW: Rest of world.

Figure 1 Spain: 1995Q1-2013Q2

Fig. 1.a. Year-on-year GDP growth (%): Spain and REA

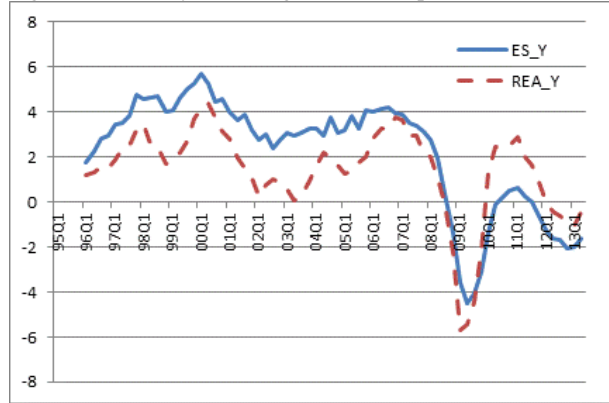
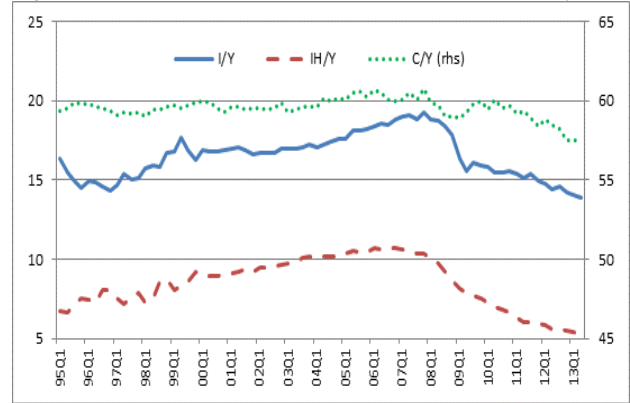


Fig. 1.b Real demand shares % (ratios to real GDP, base yr. 2000)



I [IH]: non-residential [housing] investment; C: consumption

Fig. 1.c Trade balance (TB), current account (CA) and gov't deficit (GOC), % GDP

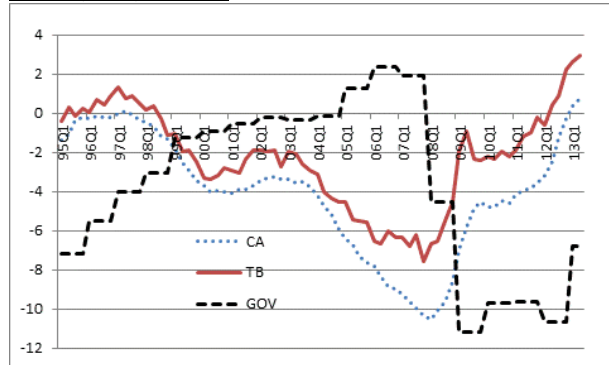


Fig. 1.d Savings, investment, net exports, % GDP

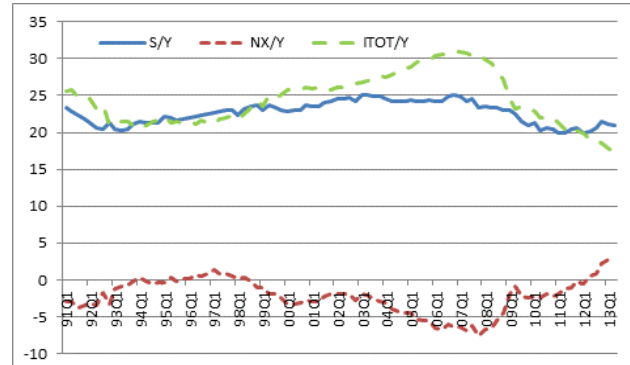


Fig. 1.e Net foreign claims against Spanish sectors, % GDP

BoS: Bank of Spain, GOV: general government; HH: households; Corp: private corporations

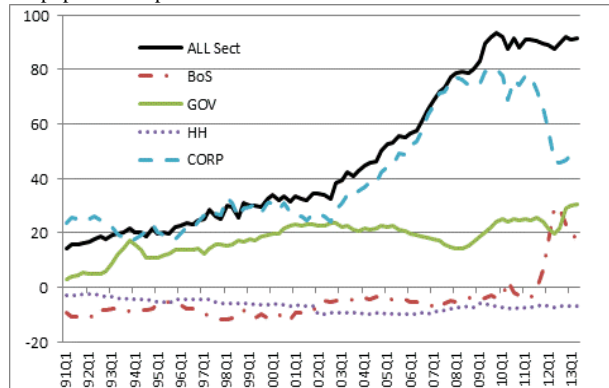


Fig. 1.f Nominal interest rates,% p.a.

Borrowing rates: Spanish households (HH), non-fin. firms (NFC), government (GOV). Bank of Spain (BoS) & ECB policy rates

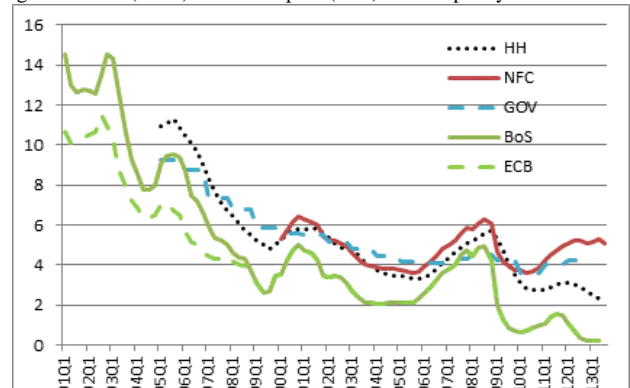


Fig. 1.g YoY Growth of GDP deflator and house price, %

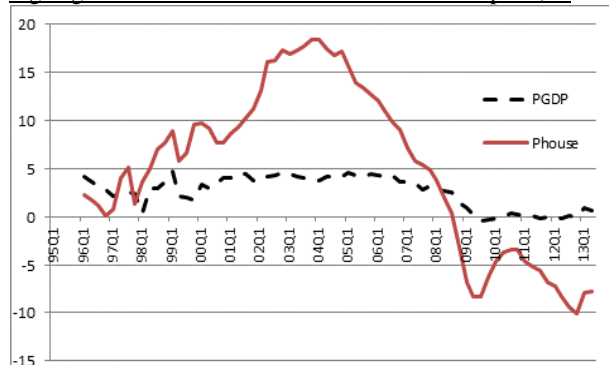


Figure 2. Impulse responses to financial shocks

Figure 2.a. Negative shock to Spanish housing risk premium

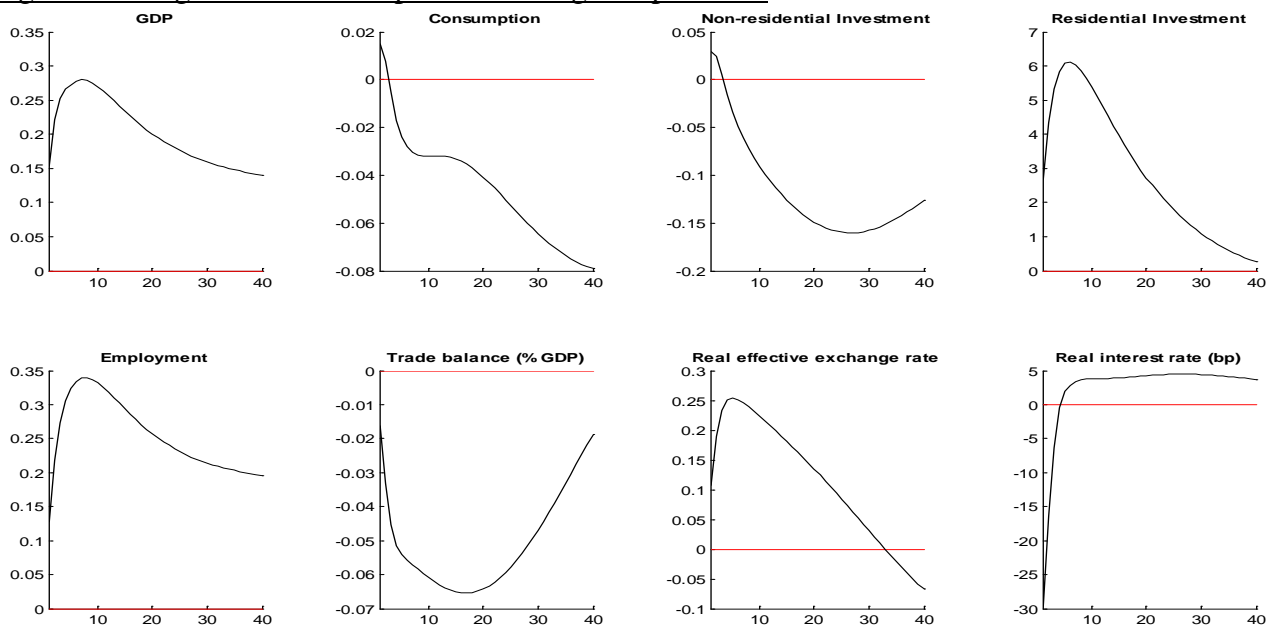


Figure 2.b Negative shock to risk premium on Spanish non-resident capital

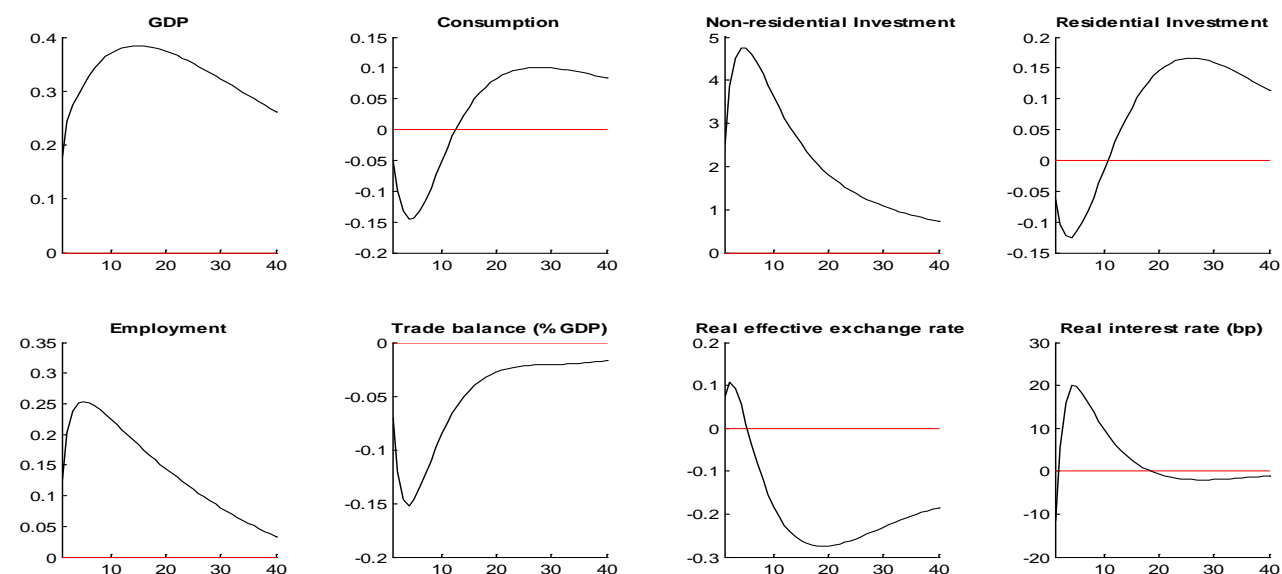


Figure 2.c. Negative shock to Spanish private interest rate spread

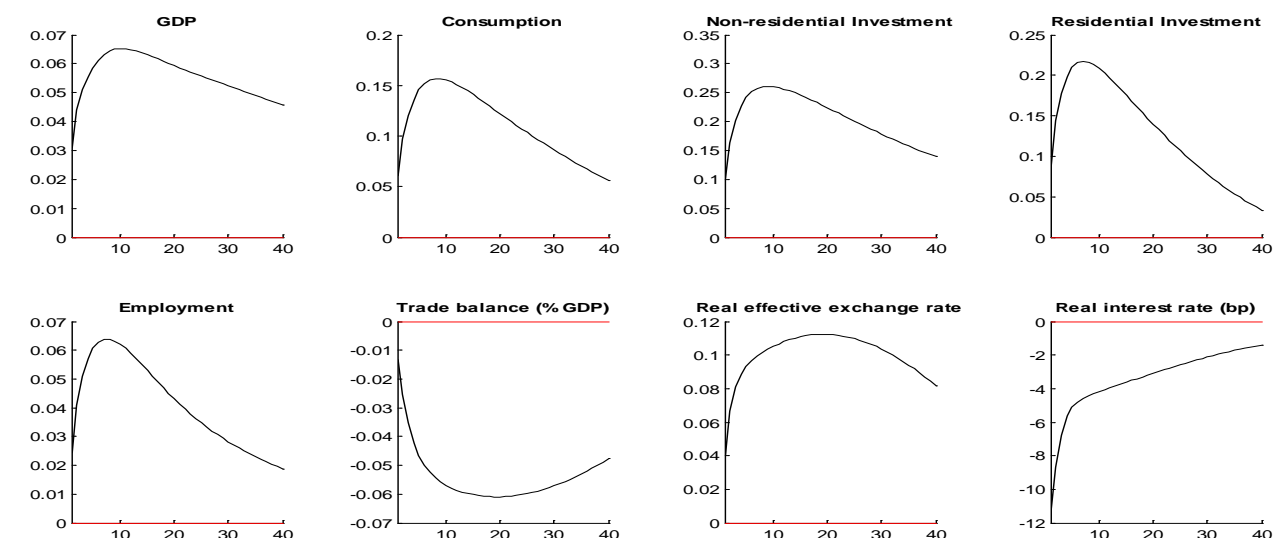


Figure 2.d. Positive shock to Spanish household foreign loan-to-value ratio

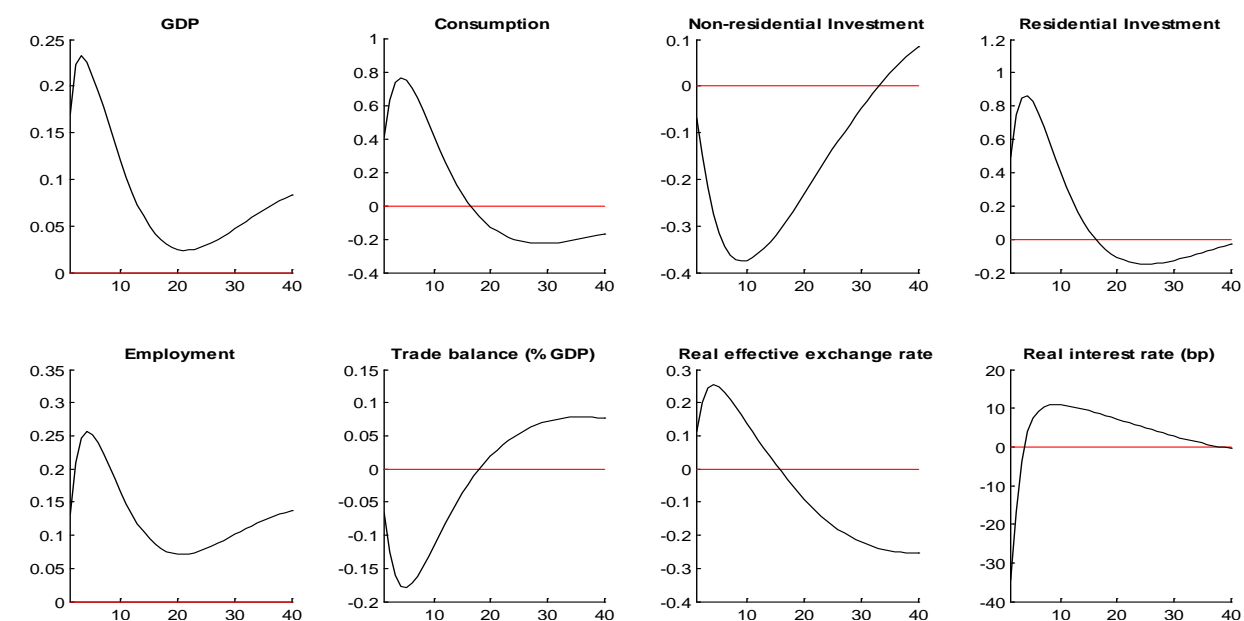
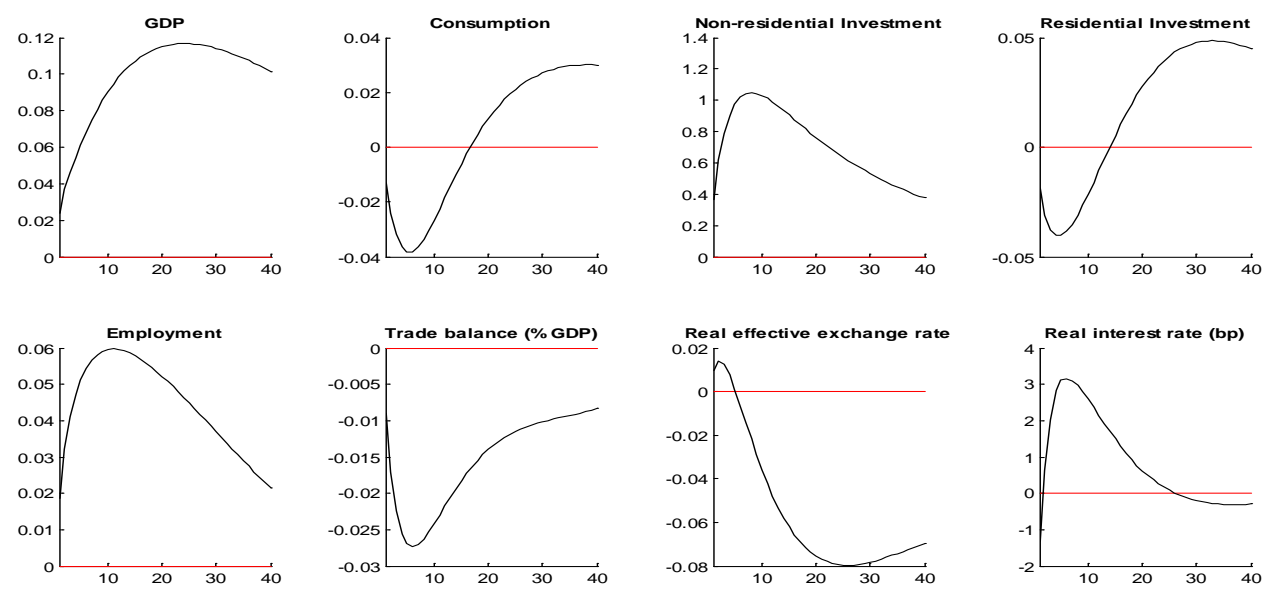


Figure 2.e. Positive shock to Spanish firm foreign loan-to-value ratio



Note: A Spanish real appreciation is represented by a *rise* in the real exchange rate. The ‘real interest rate’ is the real household loan rate.

Figure 3. Historical decompositions

Figure 3.a. Spain: trade balance/GDP

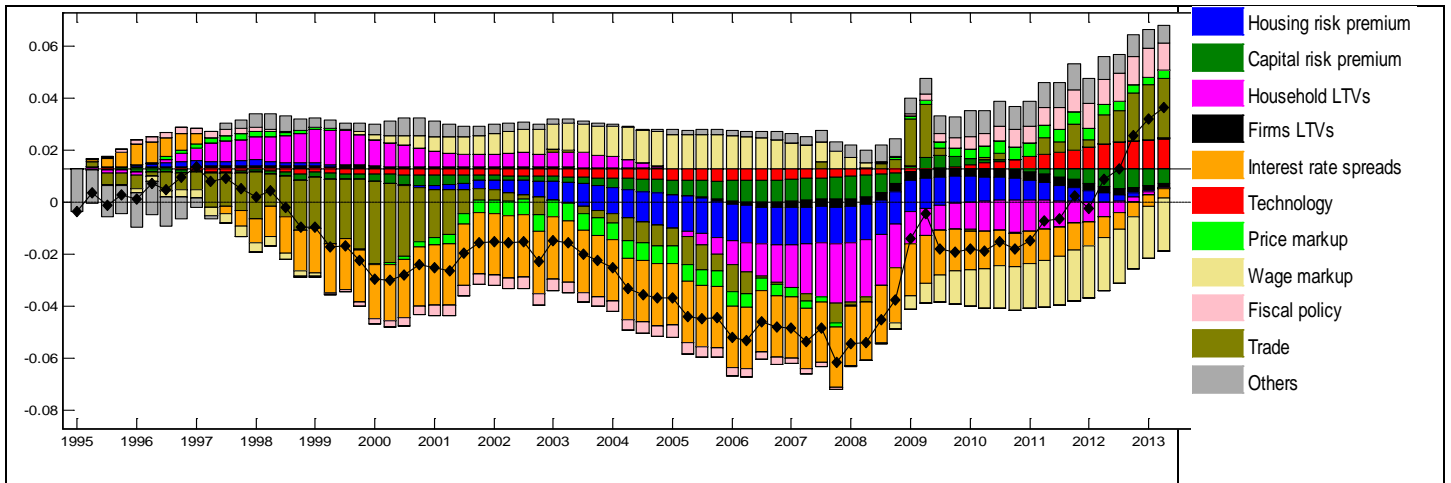


Figure 3.b. Spain: (GDP-private consumption-government consumption)/GDP

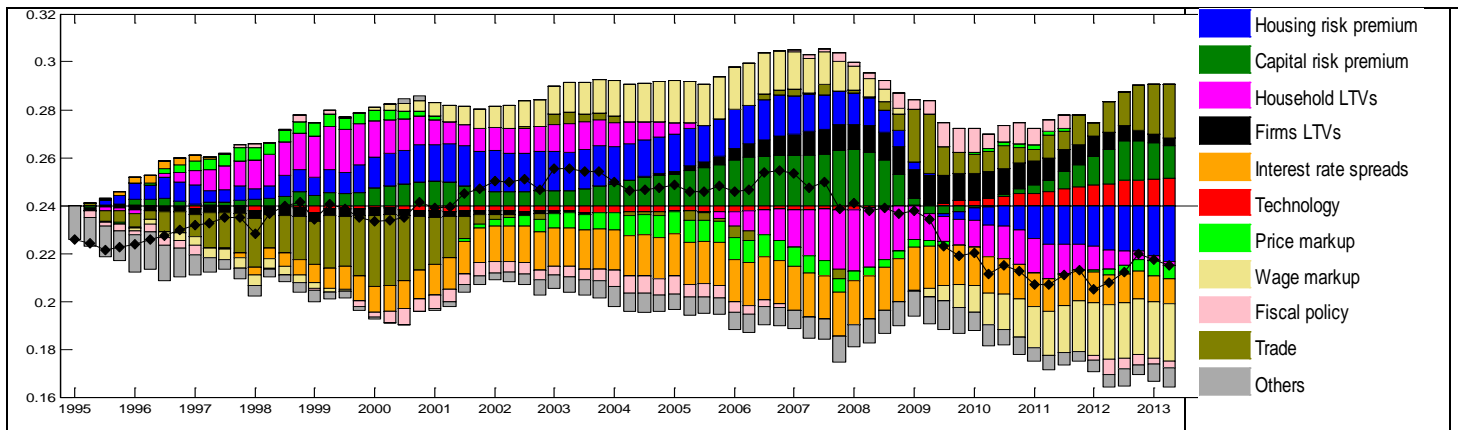
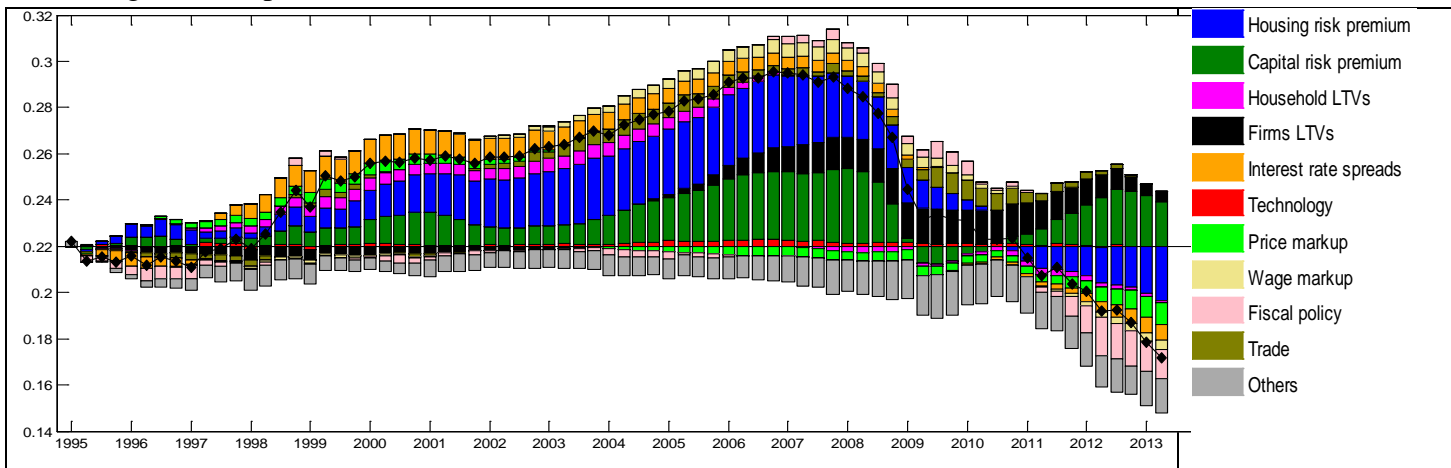


Figure 3.c. Spain: total investment/GDP



3.d. Spain: year-on-year GDP growth

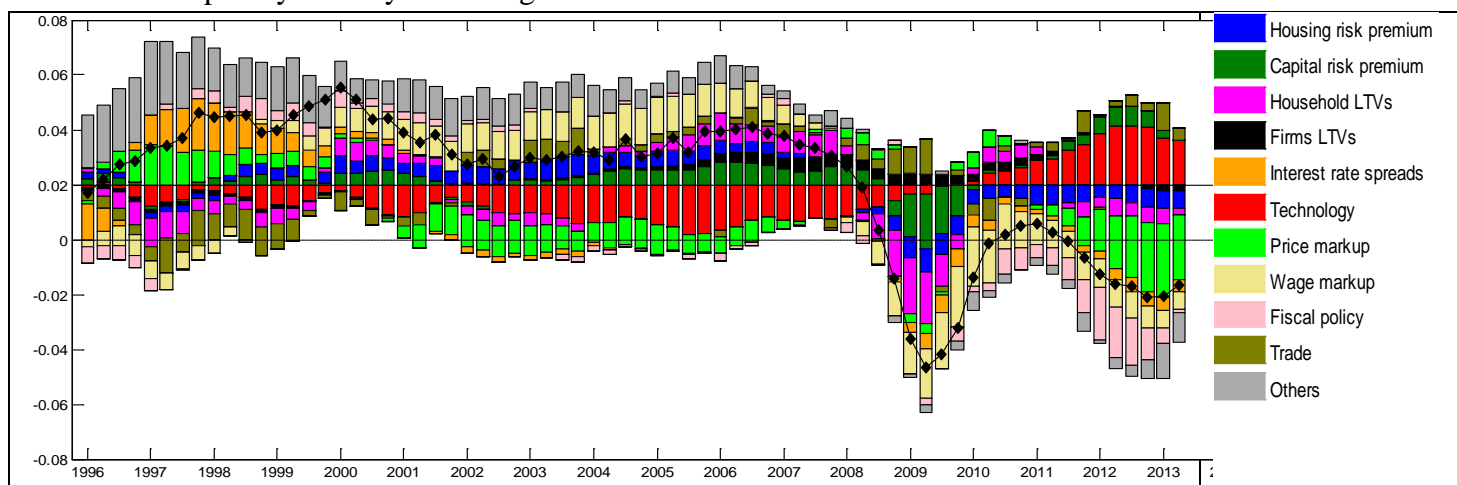
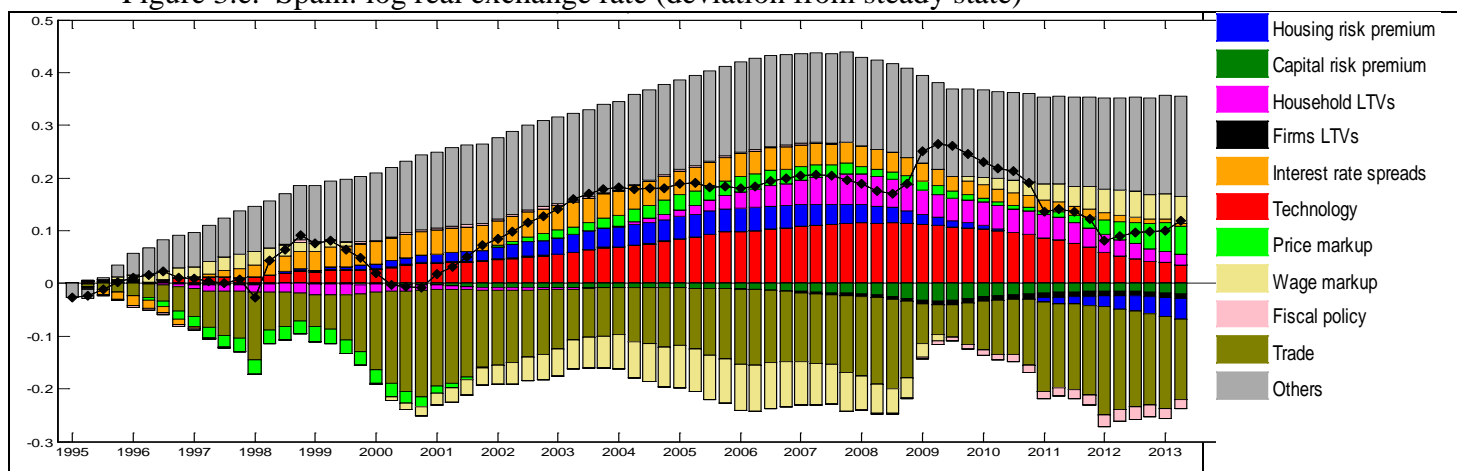


Figure 3.e. Spain: log real exchange rate (deviation from steady state)



Note: The lines with black lozenges show the historical data. Thin horizontal line represents steady state values. Vertical bars show contributions of different types of shocks to the historical data. Vertical bars above the horizontal (steady state) line represent positive shock contributions to the historical data, while bars below the horizontal line represent negative contributions. The (groups of) shocks are describes in Section 5.4. In Fig. 3.e, a Spanish real exchange rate appreciation is represented by a rise in the real exchange rate.

APPENDIX

- A. Detailed model description**
- B. Detailed list of shocks**
- C. Detailed list of estimated parameters**
- D. Additional historical decompositions**

A. Detailed Model Description

We consider a three-country world consisting of Spain, the rest of Euro Area (REA), and the rest of the world (ROW).¹⁶ The Spanish block of the model is rather detailed, while the REA and the ROW blocks are more stylized, it assumes two types of households that provide labour services to firms, and accumulate housing capital. The households have different rates of time preference. The more patient household owns the country's firms, and holds financial assets. The other (impatient) household borrows from the domestic patient household and from abroad, subject to collateral constraints. The model captures that fact that Spain is part of a monetary union. We assume that Spain is small relative to the rest of the EA—Spain thus faces an exogenous foreign interest rate. Spain has a fiscal authority that purchases final output, levies distorting taxes and issues debt; fiscal policy is described by policy (feedback) rules. Unless otherwise specified, the exogenous variables in the model follow independent AR(1) processes:

$$u_t^x = \rho^x u_{t-1}^x + \varepsilon_t^x,$$

with ε_t^x being a white noise with constant variance.

A.1 Firms

A.1.1 Intermediate goods producers

Firms operating in the final goods production sector are indexed by j . Each firm produces a variety of the domestic good which is an imperfect substitute for varieties produced by other firms. Because of imperfect substitutability, firms are monopolistically competitive in the goods market and face a downward-sloping demand function for goods. Domestic final good producers sell the goods and services to domestic and foreign households, investment and construction firms and governments.

Output is produced with a Cobb-Douglas production function using firm capital K_t^j , employment L_t^j and public infrastructure KG_t as inputs:

$$(1) \quad Y_t^j = A_t (ucap_t^j K_t^j)^{1-\alpha} (U_t^Y L_t^j)^\alpha (KG_t)^{1-\alpha_G}.$$

where A_t is exogenous total factor productivity (TFP). The economy-wide labour-augmenting productivity shock u_t^Y follows a random walk with drift.

Employment at the firm level L_t^j is a CES aggregate of labour supplied by individual households i :

$$(2) \quad L_t^j \equiv \left(\int_0^1 L_t^{i,j \frac{\theta-1}{\theta}} di \right)^{\frac{\theta}{\theta-1}}.$$

where $\theta > 1$ determines the degree of substitutability between different types of labour. The firms also decide about the degree of capacity utilization ($ucap_t^j$).

The output of the final goods sector Y_t is a CES aggregate of the output of individual firms j :

¹⁶The model is an extension of the QUEST model of the EU economy (Ratto, Roeger and in 't Veld, 2009). Other versions of that model have similar version has been estimated with US data (in 't Veld, Raciborski, Ratto and Roeger, 2011) and with German data (Kollmann, Ratto, Roeger, in't Veld and Vogel, 2013).

$$(3) \quad Y_t \equiv \left(\int_0^1 Y_t^j \frac{\eta-1}{\eta} dj \right)^{\frac{\eta}{\eta-1}},$$

where η indicates the degree of substitutability between the varieties j that determines the steady-state price mark-up of final goods and gives the demand for individual varieties as:

$$(4) \quad Y_t^j = (p_t^j)^{-\eta} Y_t.$$

The firms invest I_t^j into productive capital. The capital stock evolves according to:

$$(5) \quad K_t^j = I_t^j + (1 - \delta^K) K_{t-1}^j$$

with δ^K being the rate of capital depreciation adjusted by trend population and productivity growth.

The firms face technological and regulatory constraints that restrict the price setting, employment, investment and capacity utilization decisions. The following convex functional forms are chosen:

$$(6) \quad \begin{aligned} adj^p(P_t^j) &= \frac{1}{2} \gamma_p (\Delta P_t^j)^2 Y_t \\ adj^L(L_t^j) &= \frac{1}{2} \gamma_L (\Delta L_t^j)^2 w_t \\ adj^i(I_t^j) &= \frac{1}{2} \gamma_K \left(\frac{I_t^j}{K_{t-1}^j} - \delta^K \right)^2 p_t^I K_{t-1}^j + \frac{1}{2} \gamma_I (\Delta I_t^j)^2 p_t^I \\ adj^{ucap}(ucap_t^j) &= (\gamma_{ucap,1} (ucap_t^j - 1) + \gamma_{ucap,2} (ucap_t^j - 1)^2) p_t^I K_t^j \end{aligned}$$

Intermediate good firms can issue debt. The incentive to issue (corporate) debt arises from that fact that the return on production capital exceeds the risk-free rate (see below). Intermediate good firm j issues debt domestically and abroad and faces the following collateral constraints:

$$(7a) \quad (1 + r_t^{NF}) B_t^{NF,j} \leq \tau_t^{NF} (1 + r_{t-1}^{NF}) B_{t-1}^{NF,j} + (1 - \tau_t^{NF}) (\chi^{NF} + u_t^{XINF}) p_t^K K_t^j$$

and

$$(7b) \quad (1 + r_t^{NF,F}) B_t^{NF,F,j} \leq \tau_t^{NF,F} (1 + r_{t-1}^{NF,F}) B_{t-1}^{NF,F,j} + (1 - \tau_t^{NF,F}) (\chi^{NF,F} + u_t^{XINF,F}) p_t^K K_t^j$$

with $0 \leq \tau^{NF}, \tau^{NF,F} < 1$, $B_t^{NF,j}$ and $B_t^{NF,F,j}$ are the firm's domestic and foreign debt at the end of period t , on which the following real interest rates are paid:

$$(8a) \quad r_t^{NF} = r_t + risk_t^{NF}$$

$$(8b) \quad r_t^{NF,F} = r_t^F + risk_t^{NF,F},$$

with r_t being the domestic real risk-free rate, $r_t^F = i_t^F - E_t \pi_{t+1}$ is the foreign risk-free interest rate and the nominal foreign rate, i_t^F , is defined as a sum of REA and ROW rates, weighted by the relative shares of foreign loans to Spanish firms:

$$i_t^F = s^{REA,B} i_t^{REA} + s^{ROW,B} i_t^{ROW}.$$

The risk premium is subject to an exogenous disturbance:

$$(9) \quad risk_t^{NF} = risk^{NF} + u_t^{NF}$$

with u_t^{NF} following an AR(1) process.

The 'loan-to-value ratio' parameters, χ^{NF} and $\chi^{NF,F}$, are also subject to exogenous shocks, u_t^{XINF} and $u_t^{XINF,F}$ which describe time varying credit conditions. Debt is denominated in units of real GDP. Throughout the paper, prices denoted by lower-case letters are deflated by

the GDP deflator, e.g, $p_t^K \equiv P_t^K/P_t^Y$ is the price of one unit of capital in units of GDP; $p_t^j \equiv P_t^j/P_t^Y$ (see below) is the price of intermediate good j in GDP units etc.

The period t dividend of intermediate good producer j , denoted by div_t^j , is given by

$$div_t^j = p_t^j Y_t^j + B_t^{NF,j} + B_t^{NF,F,j} - (1+r_t^{NF})B_{t-1}^{NF,j} + (1+r_t^{NF,F})B_{t-1}^{NF,F,j} - w_t L_t^j - r_t^K K_t^j - (\kappa_t^{P,j} + \kappa_t^{L,j} + \kappa_t^{div,j}), \quad (10)$$

where w_t and r_t^K are the real wage rate, and the real rental rate of capital, respectively.

Firm j maximizes the present value of dividends, denoted V_t^j :

$$(11) \quad V_t^j = div_t^j + E_t \rho_{t,t+1} V_{t+1}^j$$

where $\rho_{t,t+1}$ is the intertemporal marginal rate of substitution of the intermediate firm (owned by the patient households), subject to an exogenous shock u_t^{UC} . In each period of time, firm j decides about capital, investment, labour demand, capacity utilization, loans and product prices optimally given the production technology, adjustment costs and the demand function for firm output.

The first-order conditions from the maximization of (11) under (1) and (4)-(10) are:

$$(12) \quad q_t^j + (ucap_t^j - 1)(\gamma_{ucap,1} + \gamma_{ucap,2}(ucap_t^j - 1)) = (1 - \alpha) \frac{\varepsilon_t^j Y_t^j}{p_t^j K_t^j} + t_t^k \delta + \frac{1 - \delta}{1 + r_t^k} E_t \frac{p_{t+1}^j}{p_t^j} q_{t+1}^j + \lambda_t^{NF} (1 - \tau^{NF}) (1 - \chi_t^{NF} - u_t^{NF}) + \lambda_t^{NF,F} (1 - \tau^{NF,F}) (1 - \chi_t^{NF,F} - u_t^{NF,F})$$

$$(13) \quad q_t^j = 1 + \gamma_K \left(\frac{I_t^j}{K_{t-1}^j} - \delta^K \right) + \gamma_I \Delta I_t^j - \frac{\gamma_I}{1 + r_t^r} E_t \frac{p_{t+1}^j}{p_t^j} \Delta I_{t+1}^j$$

$$(14) \quad (1 - t_t^K) w_t (1 + u_t^w) = \frac{\varepsilon_t^j \alpha Y_t^j}{L_t^j} - \gamma_L w_t \Delta L_t^j + \frac{\gamma_L}{1 + r_t^r} E_t (w_{t+1} \Delta L_{t+1}^j)$$

$$(15) \quad (1 - \alpha) \frac{\varepsilon_t^j Y_t^j}{p_t^j K_t^j} = ucap_t^j (\gamma_{ucap,1} + 2\gamma_{ucap,2}(ucap_t^j - 1))$$

$$(16) \quad \varepsilon_t^j = (1 - t_t^K) \left(1 - \left(\frac{1}{\eta} + u_t^\varepsilon \right) \right) - \frac{\gamma_P}{\eta} \left(\frac{1}{1 + r_t^r} (sfp E_t \pi_{t+1}^j + (1 - sfp) \pi_{t-1}^j) E_t \frac{Y_{t+1}^j}{Y_t^j} - \pi_t^j \right)$$

$$(17) \quad (1 + r_t^{NF}) \lambda_t^{NF} = 1 - E_t \rho_{t,t+1} \left((1 + r_t^{NF}) - (1 + r_t^{NF}) \tau^{NF} \lambda_{t+1}^{NF} \right)$$

$$(18) \quad (1 + r_t^{NF,F}) \lambda_t^{NF,F} = 1 - E_t \rho_{t,t+1} \left((1 + r_t^{NF,F}) - (1 + r_t^{NF,F}) \tau^{NF,F} \lambda_{t+1}^{NF,F} \right)$$

where w_t is the real wage, ε_t^j is the inverse of the steady-state price mark-up and sfp the degree of forward-looking behavior among price setters in forming inflation expectations and λ_t^{NF} and $\lambda_t^{NF,F}$ are the Lagrange multipliers related to the domestic and foreign collateral constraint, respectively.

A.1.2 Residential construction

Monopolistically competitive firms h in the residential construction sector use new land I_t^L sold by (Ricardian) households and final goods J_t^{Con} to produce new houses with a CES technology:

$$(19) \quad I_t^H = \left(s_L^{\sigma^L} I_t^L \frac{\sigma^L - 1}{\sigma^L} + (1 - s_L) \frac{1}{\sigma^L} I_t^{Con} \frac{\sigma^L - 1}{\sigma^L} \right)^{\sigma^L / (\sigma^L - 1)}$$

The providers of construction services are monopolistically competitive and face quadratic price adjustment costs:

$$(20) \quad adj^{Con}(P_t^{Con}) = \frac{1}{2} \gamma_{Con} (\Delta P_t^{Con})^2 .$$

The stock of available land is determined by the exogenous growth of land supply less the use of land in current construction:

$$(21) \quad Land_t = (1 + g^L + u_t^{gL}) Land_{t-1} - I_t^L$$

The first-order conditions for the demand for construction services and land and for the pricing of these inputs and the produced houses are:

$$(22) \quad I_t^L = s^L \left(\frac{P_t^L}{P_t^H} \right)^{-\sigma^L} I_t^H$$

$$(23) \quad I_t^{Con} = (1 - s^L) \left(\frac{P_t^{Con}}{P_t^H} \right)^{-\sigma^L} I_t^H$$

$$(24) \quad p_t^{Con} = 1 + u_t^{pcon} - \gamma_{Con} \left(\frac{1}{1 + r_t^r} (sfpconstr E_t \pi_{t+1}^{Con} + (1 - sfpconstr) \pi_{t-1}^{Con}) - \pi_t^{Con} \right)$$

$$(25) \quad E_t \frac{p_{t+1}^L}{p_t^L} = \frac{1 + r_t^l}{1 + g^L + u_t^{gL}}$$

$$(26) \quad p_t^H = (s_L (p_t^L)^{1-\sigma^L} + (1 - s_L) (p_t^{Con})^{1-\sigma^L})^{1/(1-\sigma^L)}$$

where $sfpconstr$ is the degree of forward-looking behavior in the formation of construction price expectations and r_t^l the real return on land. New and existing houses are perfect substitutes. Households can make capital gains or suffer capital losses depending on house price fluctuations.

A.1.3 Investment goods producers

There is a perfectly competitive investment goods production sector which combines domestic and foreign final goods, using the same CES aggregator as private consumption (see below), to produce investment goods for the domestic economy. Denote the CES aggregate of domestic and foreign inputs used by the investment goods sector with I_t^{imp} , then real output of the investment goods sector is produced by the following linear production function:

$$(27) \quad I_t = I_t^{imp} U_t^{PI}$$

in which U_t^{PI} is a technology shock specific to the production technology for investment goods, which follows a random walk $u_t^{PI} = u_{t-1}^{PI} + \varepsilon_t^{PI}$. The price of investment goods relative to consumption goods follows as:

$$(28) \quad p_t^I U_t^{PI} = p_t^C .$$

A.2 Final good sector

The final good sector combines the domestically produced intermediate goods and a homogeneous imported intermediate goods to produce a final good using the technology

$$(29) \quad F_t = \left[(s_t^d - u_t^{IM})^{\frac{1}{\sigma^M}} (D_t)^{\frac{\sigma^M - 1}{\sigma^M}} + (1 - s_t^d + u_t^{IM})^{\frac{1}{\sigma^M}} (M_t)^{\frac{\sigma^M - 1}{\sigma^M}} \right]^{\frac{\sigma^M}{\sigma^M - 1}} ,$$

where $D_t = \left\{ \int_0^1 (Y_t^j)^{(\nu-1)/\nu} dj \right\}^{\nu/(\nu-1)}$ is an aggregate of the domestically produced intermediates.

M_t are (real) imports. The home bias parameter, s^d can be subject to random shocks u_t^{IM} .

A.2 Trade

Competitive exporters buy final domestic output and transform it into exportables using a linear technology, so that export prices are given by:

$$(30) \quad p_t^X = 1/(1 - u_t^{PX} - \gamma_{PX} \rho_{t,t+1} (sfp_x E_t \pi_{t+1}^X + (1 - sfp_x) \pi_{t-1}^X - \pi_t^X)),$$

where u_t^{PX} is a price setting shock, γ_{PX} quantifies the price adjustment cost and sfp_x is the degree of forward-looking expectations .

Importers buy foreign goods at quantity M_t and sell them on the domestic market charging the price:

$$(31) \quad p_t^M = 1/(1 - u_t^{PM} - \gamma_{PM} \rho_{t,t+1} (sfp_m E_t \pi_{t+1}^M + (1 - sfp_m) \pi_{t-1}^M - \pi_t^M)),$$

where, similarly as above, u_t^{PM} is a price setting shock, γ_{PM} quantifies the price adjustment cost and sfp_m is the degree of forward-looking expectations.

We allow some inertia (γ_M) in the demand for imports, defined as:

$$(32) \quad M_t = \left((1 - s^d + u_t^M) \left((p_t^M / p_t^C)^{1 - \rho^{PCPM}} (p_{t-1}^M / p_{t-1}^C)^{\rho^{PCPM}} \right)^{-\sigma^M} \left(C_t + \frac{p_t^I}{p_t^C} I_t + \frac{p_t^G}{p_t^C} G_t \right) \right)^{1 - \gamma_M} M_{t-1}^{\gamma_M},$$

while Spanish exports are defined as a function of the imports of REA from Spain, $M_t^{REA,ES}$, and ROW imports from Spain, $M_t^{ROW,ES}$:

$$(33) \quad X_t = M_t^{REA,ES} (size^{REA} / size^{ES}) + M_t^{ROW,ES} (size^{ROW} / size^{ES}),$$

where imports from Spain in the two foreign regions are defined as the respective bilateral trade shares, $st^{REA,ES}$ and $st^{ROW,ES}$ of total imports in the two regions.

We assume white noises disturbances in the import equations for REA and ROW to allow for a shock in the Spanish exports.

A.3 Households

There are two households that have different rates of time preference. We refer to the patient and impatient household as the ‘Ricardian’ and the ‘credit constrained’ household, respectively. Household welfare depends on final good consumption, the stock of housing capital (households are owner-occupiers), and hours worked. There is habit persistence for consumption. The period utility of household $h=r,c$ (r : Ricardian; c : credit constrained) is:

$$(34) \quad U(C_t^h, H_t^h, L_t^h) = \log \left\{ \left[(C_t^h - \eta C_{t-1}^h)^{\frac{\sigma^h - 1}{\sigma^h}} + s_H^h \frac{1}{\sigma^h} H_t^h \frac{\sigma^h - 1}{\sigma^h} \right]^{\frac{\sigma^h}{\sigma^h - 1}} \right\} + \exp(u_t^L) \mathcal{G}^h \cdot (L^h - L_t^h)^{1 - \kappa},$$

where C_t^h, H_t^h and L_t^h are the date t consumption, housing stock and hours worked of household h . The household’s time endowment is L^h , and thus $L^h - L_t^h$ is the household’s leisure. u_t^L is a preference shock (that is common to both households).

A trade union ‘differentiates’ homogenous labour hours provided by the households into imperfectly substitutable labour services, and then offers these services to the intermediate goods-producing firms. The union sets nominal wage rates of the differentiated labour services to maximize the sum of the expected lifetime utilities of the two workers, subject to independent Calvo (1983) wage adjustment schemes for each type of differentiated labour (Kollmann, 2001, 2002). The households bear real costs to adjusting the nominal wage (see below).

A.3.1 Ricardian household

The Ricardian household has full access to financial markets. She holds domestic government bonds, B_t^G ; bonds issued by domestic non-financial firms, B_t^{NF} , by the other domestic household, B_t^C , and by foreign households, B_t^F (foreign bonds are denominated in foreign

output). The Ricardian household also owns the production capital K_t used in the intermediate goods production sector as well as the stock of land, $Land_t$, which is still available for building new houses. All domestic firms are owned by the Ricardian household, i.e. that household receives all dividends of the intermediate goods sector (div_t) and of the construction sector (div_t^H). Labour income and consumption are taxed at rates τ_t^W and τ^C , respectively. In addition the household receives a lump-sum transfer $T_t^{LS,r}$. The Ricardian household's date t expected life-time utility, V_t^r , is $V_t^r = U(C_t^r, H_t^r, L_t^r) + E_t \beta_{t,t+1}^r V_{t+1}^r$, where $0 < \beta_{t,t+1}^r < 1$ is the household's subjective discount factor between periods t and $t+1$. $\beta_{t,t+1}^r$ is subject to a random shock u_t^{UC} that adds exogenous changes to intertemporal consumption path. The period t budget constraint of the Ricardian household is

$$(35) \quad \begin{aligned} (1 + \tau^c) p_t^C C_t^r + p_t^I I_t^r + p_t^H (1 + \tau_t^c) I_t^{H,r} + (B_t^G + B_t^c + B_t^{NF}) + rer_t B_t^F = \\ (1 + r_{t-1}^G)(B_{t-1}^G + B_{t-1}^c + B_{t-1}^{NF}) + (1 + r_{t-1}^F) rer_t B_{t-1}^F - ((1 - \tau^K) i_t^K + \tau^K \delta^K) p_t^I K_t^r \\ + (1 - \tau_t^W) w_t L_t^r - \kappa_t^{W,r} + p_t^L J_t^{Land} + div_t + div_t^H + T_t^{LS,r}. \end{aligned}$$

The budget constraint is written in real terms (with all prices expressed relative to the GDP deflator). rer_t is the (GDP deflator-based) real exchange rate between Spain and the ROW. $\kappa_t^{W,r}$ is the wage adjustment cost borne by the Ricardian household.¹⁷ p_t^L is the price of land. (Recall that i_t^K is the rental rate of capital.) The laws of motion of the stocks of production capital, housing capital and land owned by the Ricardian household are $K_t^r = J_t^r + (1 - \delta) K_{t-1}^r$, $H_t^r = J_t^{H,r} + (1 - \delta^H) H_{t-1}^{H,r}$ and $Land_t = (1 + g_t^L) Land_{t-1} - J_t^{Land}$, respectively.¹⁸ I_t^r and $I_t^{H,r}$ represent real investment expenditures in production capital and housing capital while J_t^r and $J_t^{H,r}$ are the gross increases in the stocks of production and housing capital. There are convex capital adjustment costs. Investment expenditure is given by

$$(36a) \quad I_t^r = J_t^r \left(1 + \frac{1}{2} \gamma_K (J_t^r / K_t^r) \right) + \frac{1}{2} \gamma_{J,K} (J_t^r - J_{t-1}^r)^2 / K_t^r,$$

$$(36b) \quad I_t^{H,r} = J_t^{H,r} \left(1 + \frac{1}{2} \gamma_H (J_t^{H,r} / H_t^r) \right) + \frac{1}{2} \gamma_{J,H} (J_t^{H,r} - J_{t-1}^{H,r})^2 / H_t^r.$$

Welfare maximization gives standard first-order optimality conditions for consumption, demand for housing, residential investment and asset holding decisions by Ricardian household.

A.3.1.1 Bubbles

Empirically, Spanish (non-)residential investment is *not* closely tied to the risk-free interest rate. Like, e.g., Bernanke and Gertler (1999), we thus assume that investment decisions are subject to non-fundamental shocks. Specifically, the Euler equations for residential and non-residential investment are disturbed by stationary exogenous shocks z_t^K and z_t^H :

$$(37a) \quad 1 = (1 - z_t^K) E_t \beta_{t,t+1}^r \{ P_{t+1}^K (1 - \delta^K) + (1 - \tau^K) i_t^K + \tau^K \delta^K \} / P_t^K,$$

$$(37b) \quad 1 = (1 - z_t^H) E_t \beta_{t,t+1}^r \{ U_{H,t}^r + P_{t+1}^H (1 - \delta^H) \} / P_t^H,$$

¹⁷The total wage adjustment cost borne by the two households is $\kappa_t^W \equiv \frac{1}{2} \gamma_w [(W_t - W_{t-1})^2 / W_{t-1}] Y_t$; the Ricardian household bears a fraction $C_t^r / (C_t^r + C_t^c)$ of that cost, i.e. $\kappa_t^{W,r} \equiv \kappa_t^W \cdot C_t^r / (C_t^r + C_t^c)$.

¹⁸We assume that the stock of constructible land grows at the exogenous rate g_t^L between periods $t-1$ and t .

where P_t^K and P_t^H denote the price of production capital and the house price, respectively and $\beta_{t,t+1}^r$ is the rate of time preference of Ricardian households. We assume that the unconditional mean of z_t^K and z_t^H is strictly positive: $Ez_t^K = Ez_t^H > 0$. Following Bernanke and Gertler, we use the term "bubble" to denote deviations of asset prices from fundamentals driven by z_t^K and z_t^H . These disturbances can, e.g., be interpreted as representing expectational biases (waves of optimism or pessimism, panics) regarding future investment returns.¹⁹

A.3.1.2 Interest rate on foreign bonds

The Spanish Ricardian household faces a nominal interest rate on foreign bonds (denominated in foreign currency):

$$(38) \quad i_t^F = i_t^{ROW} + risk^{ROW},$$

where i_t^{ROW} is the interest rate in the ROW and $risk^{ROW}$ is an exogenous risk term describing the willingness of the ROW to lend to Spain (See below for discussion of the determinants of ROW policy rate.)

A.3.2 Credit constrained household

The credit constrained household has a higher rate of time preference than the Ricardian household ($0 < \beta_{t,t+1}^c < \beta_{t,t+1}^r$). The date t expected life-time utility of the credit constrained household, V_t^c is defined by $V_t^c = U(C_t^c, H_t^c, L_t^c) + E_t \beta_{t,t+1}^c V_{t+1}^c$. The credit constrained household borrows an amount B_t from the Ricardian household, subject to the collateral constraint:

$$(39) \quad (1+r_t^c)B_t^c \leq \tau^c (1+r_{t-1}^c)B_{t-1}^c + (1-\tau^c)(\chi^c + u_t^{XIC}) p_t^H H_t^c,$$

with $0 \leq \lambda^c < 1$, and borrow B_t^F from abroad, facing the collateral constraint:

$$(40) \quad (1+r_t^{c,F})B_t^{c,F} \leq \tau^{c,F} (1+r_{t-1}^{c,F})B_{t-1}^{c,F} + (1-\tau^{c,F})(\chi^{c,F} + u_t^{XIC,F}) p_t^H H_t^c,$$

where we assume that credit constrained households face an interest rate spread on their loans:

$$(41) \quad r_t^c = r_t + risk_t^c$$

and

$$(42) \quad r_t^{c,F} = r_t^F + risk_t^c,$$

where $risk_t^c$ is subject to an exogenous disturbance:

$$risk_t^c = risk^c + u_t^{risk,c}.$$

As for non-financial firms, households face time varying loan-to-value ratios, subject to exogenous disturbances, u_t^{XIC} and $u_t^{XIC,F}$.

The period t budget constraint of the credit constrained household is:

$$(43) \quad (1+\tau_t^c)p_t^C C_t^c + p_t^H (1+\tau_t^H)I_t^{H,c} + B_t^c + B_t^{c,F} = (1+r_{t-1}^c)B_{t-1}^c + (1+r_{t-1}^{c,F})B_{t-1}^{c,F} + (1-\tau_t^W)w_t L_t^c - \kappa_t^{W,c} + T_t^{LS,c}.$$

The law of motion of the housing stock owned by the credit-constrained household is $H_t^c = J_t^{H,c} + (1-\delta^H)H_{t-1}^c$. The credit constrained household faces housing adjustment costs that

¹⁹ A rise in z_t^K and z_t^H is also observationally equivalent to what Hall (2010) refers to as "principal agent frictions", which he models by introducing an exogenous wedge between the returns on safe assets (government bonds) and risky assets (equity and houses) in order to capture rising spreads between safe and risky assets during the financial crisis.

are similar to the adjustment costs borne by the Ricardian household; her housing investment decisions are affected by the same non-fundamental shock as the decisions made by the Ricardian household.

The credit-constrained households maximize welfare as the discounted sum of expected period utility subject to the constraints (40)-(43). The first-order conditions for consumption and housing are:

$$(44) \quad \beta^c_{t,t+1} E_t \frac{U_{C,t+1}^c}{U_{C,t}^c} = \frac{(1 - (1 + r_t^c) \psi_t)}{(1 + r_t^c)(1 - \tau^c E_t \psi_{t+1})} E_t \frac{(1 + t_{t+1}^c) p_{t+1}^c}{(1 + t_t^c) p_t^c}$$

$$(45) \quad q_t^{H,c} = 1 + \gamma_H \left(\frac{I_t^{H,c}}{H_{t-1}^c} - \delta^H \right) + \gamma_{th} \Delta I_t^{H,c} - \frac{1 - (1 + r_t^c) \psi_t}{(1 + r_t^c)(1 - \tau^c E_t \psi_{t+1})} \gamma_{th} E_t \frac{p_{t+1}^H}{p_t^H} E_t \Delta I_{t+1}^{H,c}$$

$$(46) \quad q_t^{H,c} = \frac{p_t^c}{p_t^H} \frac{U_{H,t}^c}{U_{C,t}^c} + \frac{(1 - (1 + r_t^c) \psi_t)(1 - \delta^H)}{(1 + r_t^c)(1 - \tau^c E_t \psi_{t+1})} E_t \frac{(1 + t_{t+1}^c) p_{t+1}^H}{(1 + t_t^c) p_t^H} q_{t+1}^{H,c} + \frac{(1 - \tau^c) \psi_t}{1 + t_t^c} \chi_t^c E_t \pi_{t+1}^H +$$

$$+ \frac{(1 - \tau^{c,F}) \psi_t^F}{1 + t_t^c} \chi_t^{c,F} E_t \pi_{t+1}^H$$

where ψ_t^c and ψ_t^F are the Lagrange multipliers of the domestic and foreign collateral constraint, respectively.

A.4 Wage setting

Trade unions are maximizing a joint utility function for each type of labour i . It is assumed that types of labour are distributed equally over Ricardian and credit-constrained households with their respective population weights. Nominal rigidity in wage setting is introduced in the form of adjustment costs for changing wages. The wage adjustment costs are borne by the household.

The trade unions set wages by maximizing a weighted average of the utility functions of Ricardian and credit-constrained households. The wage rule is obtained by equating a weighted average of the marginal utility of leisure to a weighted average of the marginal utility of consumption times the real wage adjusted for a wage mark-up:

$$(47) \quad \left(\frac{s^r U_{1-L,t}^r + (1 - s^r) U_{1-L,t}^c}{s^r U_{C,t}^r + (1 - s^r) U_{C,t}^c} (1 + t_t^c) p_t^c \right)^{1 - \rho_w} \left((1 - \frac{1}{\theta}) ((1 - t_{t-1}^w - ssc_{t-1}) w_{t-1} - BEN_{t-1}) \right)^{\rho_w}$$

$$= (1 - \frac{1}{\theta}) ((1 - t_t^w - ssc_t) w_t - BEN_t) + \frac{\gamma_w}{\theta} w_t (\pi_t^w - (1 - sfw) \pi_{t-1})$$

$$- \frac{1}{1 + r_t^r} \frac{\gamma_w}{\theta} w_t (E_t \pi_{t+1}^w - (1 - sfw) \pi_t)$$

The wage mark-up fluctuates around $1/\theta$, which is the inverse of the elasticity of substitution between different varieties of labour services. Fluctuation in the wage mark-up arises because of wage adjustment costs. Real benefits in GDP prices equal the replacement rate times the real wage:

$$(48) \quad BEN_t = b_t^U w_t$$

The ratio of the marginal utility of leisure to the marginal utility of consumption is a natural measure of the reservation wage. If the ratio is equal to the consumption wage net of benefit payments to non-working parts of the labour force, the household is indifferent between, on the one hand, supplying an additional unit of labour and spending the additional income on consumption or, on the other hand, not increasing labour supply.

The specification (47) also allows for real wage inertia ρ_w . Unit labour costs are $ulc_t = w_t L_t / Y_t$, which equals the wage share in domestic income.

A.5 Fiscal policy

Government consumption, investment and transfers respond to changes in GDP growth and to deviations of public debt and deficit from target values. Real government consumption and are set according to the following policy rules:

$$(49) \quad c_t^G - c^G = \tau_{lag}^{CG} (c_{t-1}^G - c^G) + \tau_1^{CG} (\frac{1}{4} \ln(Y_{t-1}/Y_{t-5}) - g_Y) - \tau^B (\frac{B_{t-1}}{P_{t-1}^Y Y_{t-1}} - b^T) - \tau^{DEF} (\frac{\Delta B_{t-1}}{P_{t-1}^Y Y_{t-1}} - def^T) + u_t^{CG},$$

$$i_t^G - i^G = \tau_{lag}^{IG} (i_{t-1}^G - i^G) + \tau_1^{IG} (\frac{1}{4} \ln(Y_{t-1}/Y_{t-5}) - g_Y) - \tau^{B,IG} (\frac{B_{t-1}}{P_{t-1}^Y Y_{t-1}} - b^T) - \tau^{DEF,IG} (\frac{\Delta B_{t-1}}{P_{t-1}^Y Y_{t-1}} - def^T) + u_t^{IG},$$

where $c_t^G \equiv G_t/Z_t$ and $i_t^G \equiv I_t^G/Z_t$ denote government consumption and investment normalized by the ‘total’ technology trend Z_t .²⁰ g_Y is the steady state quarterly growth rate of GDP; b^T is the target government debt/GDP ratio, and def^T is the associated deficit target. u^{CG} and u^{IG} are white noise disturbances.

The government provides unemployment benefits to the unemployed, and also makes other transfer payments to the two households. All transfers are lump sum payments. Unemployment benefits are modeled as a subsidy to leisure $L - L_t$, where $L = L^c + L^l$ is the total time endowment, while $L_t = L_t^l + L_t^c$ equals aggregate hours worked. Unemployment benefits equal the wage rate times the benefit ratio b^U . Real transfers also respond to deviations of the public debt and deficit from target values:

$$(50) \quad tr_t = b^U w_t (1 - L_t) - \tau^{B,TR} (\frac{B_{t-1}}{Y_{t-1} P_{t-1}} - b^T) - \tau^{DEF,TR} (\frac{B_{t-1} - B_{t-2}}{Y_{t-1} P_{t-1}} - def^T) + u_t^{TR}$$

where u^{TR} is an exogenous autocorrelated shock.

Government revenue, R_t^G , consists of taxes on consumption and residential investment and on income to physical capital:

$$(51) \quad R_t^G = \tau_t^W w_t L_t + \tau_t^C p_t^C C_t + \tau_t^C p_t^H I_t^H + \tau_t^K [(Y_t - w_t L_t) - \delta K_t p_t^I].$$

The current version of the paper assumes constant consumption and capital income taxes:

$\tau_t^W = \tau^W, \tau_t^K = \tau^K$. By contrast, the labour tax rate is an increasing function of GDP normalized by the ‘total’ technology trend: $\tau_t^W = \tau_0^W (Y_t/Z_t)^{\tau_1^W}$, with $\tau_0^W, \tau_1^W > 0$.

Government debt (B_t) evolves according to

$$(52) \quad B_t = (1 + i_t^B) B_{t-1} + P_t^C C_t^G + P_t^C I_t^G + tr_t - R_t^G.$$

where i_t^B is the implicit interest rate the government pays on its debt, which depends on the average maturity structure of sovereign debt ($1/(1 - \rho^B)$) and the policy rate augmented by a mark-up made up of a sovereign risk premium, which is assumed to depend on the government debt-to-GDP ratio and an autoregressive term.

$$(53) \quad i_t^B = \rho^B i_{t-1}^B + (1 - \rho^B) [i_t + mup^B + rprem^B (B_t / Y_t - \overline{B/Y}) + \varepsilon_t^{rpb}]$$

Interest rate spread on Spanish sovereign debt

The one-period interest rate on Spanish government bonds equals the EA policy rate plus an exogenous ‘risk premium’:

²⁰ Z_t is a geometric weighted average of TFP and investment efficiency, such that GDP normalized by Z_t is stationary (definition of Z_t to be added).

$$(54) \quad i_t = i_t^{EA} + u_t^{RPREM},$$

where u_t^{RPREM} is an exogenous random disturbance whose unconditional mean is zero. Before EMU, Spanish sovereign debt rates exceeded the risk free interest rate in the rest of the Euro Area. In December 1995 the EU Council announced that the Euro would irrevocably be launched on January 1, 1999. During the period 1996-1998 the interest rate spread between Spain and the rest of the EA was gradually eliminated—that spread was close to zero between the launch of the Euro and the eruption of the Spanish sovereign debt crisis in 2010.

A.6 Monetary policy

Euro Area monetary policy is set according to an augmented Taylor-style interest rate feedback rule:

$$(55) \quad i_t^{EA} = (1-\rho^r)r + \rho^r i_{t-1}^{EA} + (1-\rho^r)[\tau_\pi^r(\frac{1}{4}\ln(P_t^{EA}/P_{t-4}^{EA}) - \pi) + \tau_Y^r(\frac{1}{4}\ln(GDP_t^{EA}/GDP_{t-4}^{EA}) - g_Y^{EA})] + \varepsilon_t^{EA,r}$$

so that the policy rate responds to a lagged interest rate, the year-on-year Euro Area CPI inflation rate, and to the year-on-year growth rate of Euro Area real GDP, and to a random disturbance. We assume that during the transition period, the convergence of Spanish rates to the REA rates were governed by the risk premium u_t^{rpreme} , modeled as a persistent AR(1) process.

A.7 Financial integration

We define as follows the (nominal) net-foreign asset positions of the three model regions, denominated in domestic currency:

$$(56) \quad NFA_t^{ES} = (B_t^F E_t^{ES,ROW} - (B_t^{c,F} + B_t^{NF,F}))P_t^Y / Y_t$$

$$(57) \quad NFA_t^{REA} = (B_t^{F,REA} E_t^{REA,ROW} + (B_t^{c,F} s^{REA,B} + B_t^{NF,F} s^{REA,B})(size^{ES} / size^{REA}))P_t^{Y,REA} / Y_t^{REA}$$

$$(58) \quad NFA_t^{ROW} = (B_t^{F,ROW} + (B_t^{c,F}(1-s^{REA,B}) + B_t^{NF,F}(1-s^{REA,B}))(size^{ES} / size^{ROW}))P_t^{Y,ROW} / Y_t^{ROW}$$

where E_t^{ES} and E_t^{REA} are the exchange rates of, respectively, ES currency and REA currency with respect to ROW currency and $B_t^{F,ROW} = -B_t^{F,REA} - B_t^F$.

The exchange rate of the EA currency against ROW currency is a weighted average of the rates of depreciation of ES and REA currencies against ROW, with weights s and $1-s$, respectively:

$$(59) \quad E_t^{EA,ROW} = sE_t^{ES,ROW} + (1-s)E_t^{REA,ROW}.$$

with s being the share of Spanish GDP in EA GDP, that is, $s = size^{ES} / size^{EA}$. Since the creation of the Euro, the exchange rates $E_t^{ES,REA}$ have been constant and $E_t^{EA,ROW} = E_t^{REA,ROW} = E_t^{ES,ROW}$.

The differential between Spanish interest and the REA rates is linked to the net-foreign positions of the regions and the following interest parity conditions hold between Spain and REA:

$$\begin{aligned} i_t^{ES} &= i_t^{EA} - rpreme(NFA_t^{ES} - NFA_t^{REA})(size^{ES} / size^{ROW}) + u_t^{rpreme} \\ i_t^{REA} &= i_t^{EA} - rpreme(NFA_t^{REA} - NFA_t^{ES})(size^{REA} / size^{ROW}) + u_t^{REA,rpreme}, \end{aligned}$$

where u_t^{rpreme} and $u_t^{REA,rpreme}$ are stationary disturbances that drives wedges between returns on Spanish, REA and ROW bonds and $rpreme$ is an important parameter which links the differential in the cost of borrowing to the respective foreign assets positions. Similarly, the differential between the Euro Area policy rate and the ROW interest parity conditions is defined as a function of the ROW net-foreign asset:

$$(60) \quad \dot{i}_t^{ROW} = \dot{i}_t^{EA} + (E_{t+1}^{EA} - E_t^{EA}) / E_t^{EA} + u_t^{EA,rpreme} + rpreme NFA_t^{ROW}.$$

Net foreign asset position

The trade balance, $TBY_t = (p_t^X X_t - p_t^M M_t) / Y_t$, is the value of net exports to GDP. We allow the trade balance to be non-zero in equilibrium in order to provide a more realistic description of the imbalances in trade experienced in Spain. Net exports together with net interest receipts, net foreign liabilities and the exogenous balance of primary incomes and transfers (TA_t), determine the evolution of the net foreign assets:

$$(61) \quad B_t^F - (B_t^{c,F} + B_t^{NF,F}) = (1 + r_{t-1}^F) B_{t-1}^F - (1 + r_{t-1}^{c,F}) B_{t-1}^{c,F} - (1 + r_{t-1}^{NF,F}) B_{t-1}^{NF,F} + P_t^X X_t - P_t^M M_t + TA_t$$

where TA_t captures discrepancies between external flows and the stock of NFA due to, e.g., valuation effects.

B. Detailed list of shocks

List of all shocks used in the model

International shocks

Financial Aggregate Euro Area shocks

- shock to interest rate spread between EA rate and ROW rate
- EA monetary shock

Financial REA shocks

- RoEA price mark-up shock
- shock to interest rate spread between EA rate and RoEA rate

Real REA shocks

- RoEA import shock
- RoEA demand shock
- RoEA supply shock

Financial ROW shocks

- ROW price mark-up shock (financial)
- ROW monetary shock (financial)

Real ROW shocks

- ROW demand shock
- ROW supply shock
- ROW import shock

Spain trade/external financial shocks

- exchange rate shock ES/EA
- import price mark-up shock
- export price mark-up shock
- shock to Spanish net-foreign-asset position

Spain trade/external real shocks

- shock to Spanish import

Domestic shocks

Real HH shocks

- preference shock of domestic HH

Financial HH shocks

- shock to household domestic LTV ratio
- shock to household foreign LTV ratio
- domestic price mark-up shock
- housing price mark-up

Labour market financial shocks

- wage markup

Labour market real shocks

- shock to non-participating rate
- shock to retirement
- labour demand shock

Firms financial shocks

- shock to housing risk premium
- land risk premium shock
- risk premium on non-residential capital
- shock to firm domestic LTV ratio
- shock to firm foreign LTV ratio

Technology real shocks

- labour augmenting technology shock

- shock on investment specific productivity

Technology financial shocks

- consumption price shock

Interest spreads financial shocks

- shock to firm loan interest rate
- shock to household loan interest rate
- shock to the risk spread on government bonds
- domestic interest rate spread (ES/EA)

Government real shocks

- lump sum tax shock
- shock to transfers
- Shock to government consumption
- deficit measurement error
- shock to government investment

Government financial shock

- shocks to public good prices.

C. Priors and estimated parameters (baseline model)

Table C.1 Results for posterior parameters

	Prior distribution	Prior mean	Prior s.d.	Posterior mean	Posterior s.d.	Interval	
dcc	Beta	0.5	0.15	0.7003	0.0820	0.5728	0.839
$\gamma_{ucap,2}$	Gamma	0.02	0.008	0.0373	0.0101	0.0207	0.0536
τ_1^{CG}	Beta	-0.1	0.04	-0.0269	0.0117	-0.0443	-0.0077
γ_M	Beta	0.5	0.2	0.2405	0.1166	0.0414	0.42
γ_H	Gamma	30	20	48.487	17.417	21.2598	75.9882
$\gamma_{J,H}$	Gamma	30	20	87.5306	25.3068	45.8826	127.8108
γ_K	Gamma	30	20	11.8123	4.9951	4.6367	20.0108
γ_I	Gamma	15	10	19.0061	7.4258	7.0643	30.5635
γ_L	Gamma	30	20	18.991	4.6834	11.2885	26.472
γ_P	Beta	4	2	7.1984	1.1638	5.3133	9.0823
$\gamma_{Pconstr}$	Gamma	30	20	34.17	13.7716	13.0926	53.5162
γ_{Phouse}	Gamma	30	20	8.0563	5.4165	0.7993	15.8222
γ_{PM}	Gamma	4	2	1.1831	0.5602	0.3418	2.0318
γ_{PX}	Gamma	4	2	0.8949	0.4662	0.1978	1.6118
γ_W	Gamma	12	4	26.5103	4.8845	18.6531	34.5018
τ_{lag}^{CG}	Beta	0.5	0.2	0.9606	0.009	0.9445	0.9763
η	Beta	0.7	0.1	0.7284	0.0524	0.6455	0.8114
τ_1^{IG}	Beta	-0.1	0.04	-0.0184	0.0093	-0.0327	-0.0034
τ_{lag}^{IG}	Beta	0.5	0.2	0.8769	0.04456	0.8078	0.9504
κ	Gamma	1	0.4	1.3137	0.39433	0.6474	1.9245
$\rho^{XI,d}$	Beta	0.85	0.06	0.8832	0.0616	0.7962	0.9685
$\rho^{XI,f}$	Beta	0.85	0.06	0.9035	0.0491	0.8262	0.9683
$\rho^{XINF,f}$	Beta	0.85	0.075	0.9236	0.0382	0.8625	0.9771
ρ^{XINF}	Beta	0.85	0.075	0.8648	0.0823	0.7359	0.9759
ρ^η	Beta	0.5	0.2	0.9077	0.0361	0.855	0.9657
$\rho^{\eta, Constr}$	Beta	0.5	0.2	0.8322	0.0571	0.7382	0.9297
$\rho^{\eta, M}$	Beta	0.85	0.075	0.9269	0.0349	0.8738	0.9832
$\rho^{\eta, X}$	Beta	0.85	0.075	0.9572	0.0190	0.9276	0.9881
P_{gby}	Beta	0.5	0.2	0.846	0.0454	0.7759	0.9229
ρ^N	Beta	0.5	0.2	0.9072	0.0219	0.8726	0.9435
ρ^{PCPM}	Beta	0.5	0.2	0.2798	0.1381	0.0447	0.4951
ρ^{er}	Beta	0.5	0.2	0.4665	0.0416	0.3989	0.5343
ρ^Z	Beta	0.5	0.2	0.8409	0.0493	0.7626	0.9232
$\rho^{Z,H}$	Beta	0.85	0.075	0.9396	0.0142	0.9163	0.963
ρ^{rpland}	Beta	0.85	0.075	0.9686	0.0142	0.9463	0.9921
τ^c	Beta	0.5	0.2	0.8591	0.0700	0.7496	0.9568
$\tau^{c,F}$	Beta	0.5	0.2	0.8036	0.1143	0.6619	0.9496
τ^{NF}	Beta	0.85	0.06	0.8629	0.0620	0.7551	0.9549
rp_k	Beta	0.025	0.006	0.0323	0.0034	0.0267	0.0379
s^d	Beta	0.72	0.012	0.7463	0.0095	0.7309	0.7621
sfp	Beta	0.7	0.1	0.7798	0.0944	0.6287	0.9419
$sfpconstr$	Beta	0.7	0.1	0.9228	0.0555	0.8459	1
sfp_{house}	Beta	0.7	0.1	0.8047	0.0901	0.6587	0.9553
sfp_m	Beta	0.7	0.1	0.8293	0.0967	0.6852	0.9926
sfp_x	Beta	0.7	0.1	0.794	0.1007	0.628	0.9577

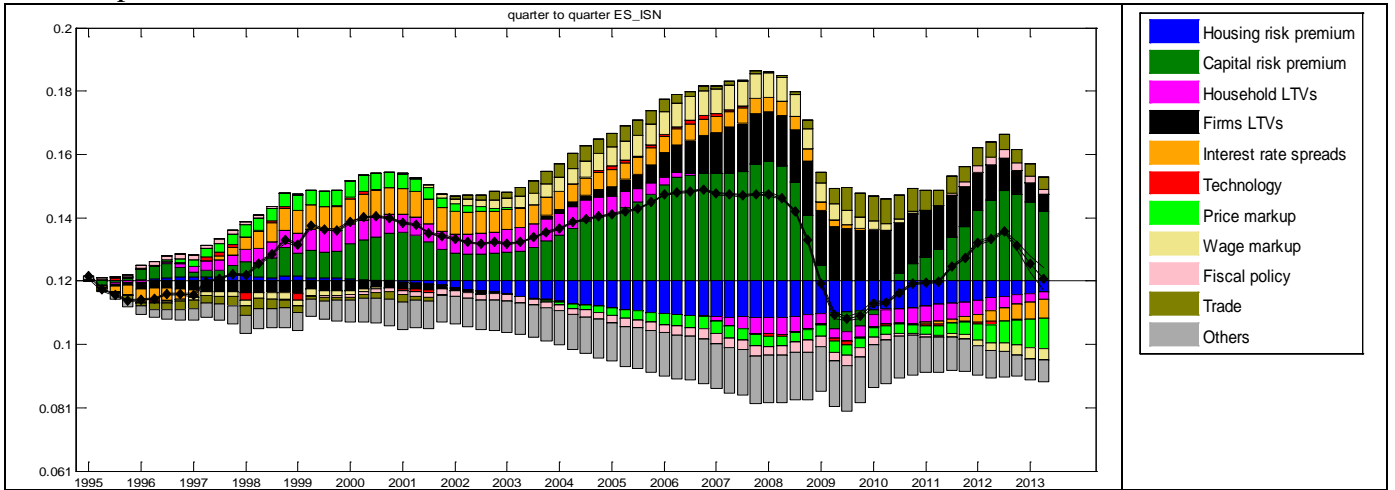
sfw	Beta	0.7	0.1	0.6789	0.09170	0.5306	0.8197
σ^H	Gamma	0.5	0.1	0.5647	0.1129	0.3857	0.7396
σ^M	Gamma	1.5	0.25	1.1203	0.0540	1.0322	1.204
σ_l	Gamma	1	0.25	0.8963	0.1848	0.611	1.1811
σ^L	Beta	0.5	0.2	0.2825	0.1270	0.0732	0.4814
s_L	Beta	0.3	0.1	0.2339	0.0723	0.1172	0.3471
s^r	Beta	0.5	0.1	0.5162	0.0521	0.432	0.6017
τ	Beta	0.1	0.04	0.1629	0.0121	0.1426	0.1828
τ^B	Beta	0.02	0.01	0.0126	0.0022	0.0089	0.0162
τ^{DEF}	Beta	0.02	0.01	0.009	0.0043	0.0019	0.0153
$\tau^{B,IG}$	Beta	0.05	0.02	0.0555	0.0196	0.0242	0.0885
$\tau^{DEF,IG}$	Beta	0.05	0.02	0.0502	0.0196	0.0174	0.0819
$\tau^{B,TR}$	Beta	0.02	0.01	0.0331	0.0120	0.0134	0.0532
$\tau^{DEF,TR}$	Beta	0.02	0.01	0.0219	0.0105	0.0055	0.0379
$rpdebt$	Beta	0.003	0.0012	0.003	0.0012	9.47E-04	0.0049
b^U	Beta	0.3	0.1	0.3789	0.0665	0.2697	0.4927
ρ^{TR}	Beta	0.85	0.075	0.9437	0.0293	0.902	0.9885
χ^c	Beta	0.25	0.1	0.2154	0.0821	0.0757	0.3454
ρ^r	Beta	0.7	0.1	0.8883	0.0206	0.8535	0.9214
τ_π^r	Beta	2	0.4	1.5177	0.2315	1.1615	1.8601
τ_Y^r	Beta	0.3	0.2	0.1617	0.0175	0.1328	0.1904

Table C.2 Results from posterior parameters (standard deviation of structural shocks)

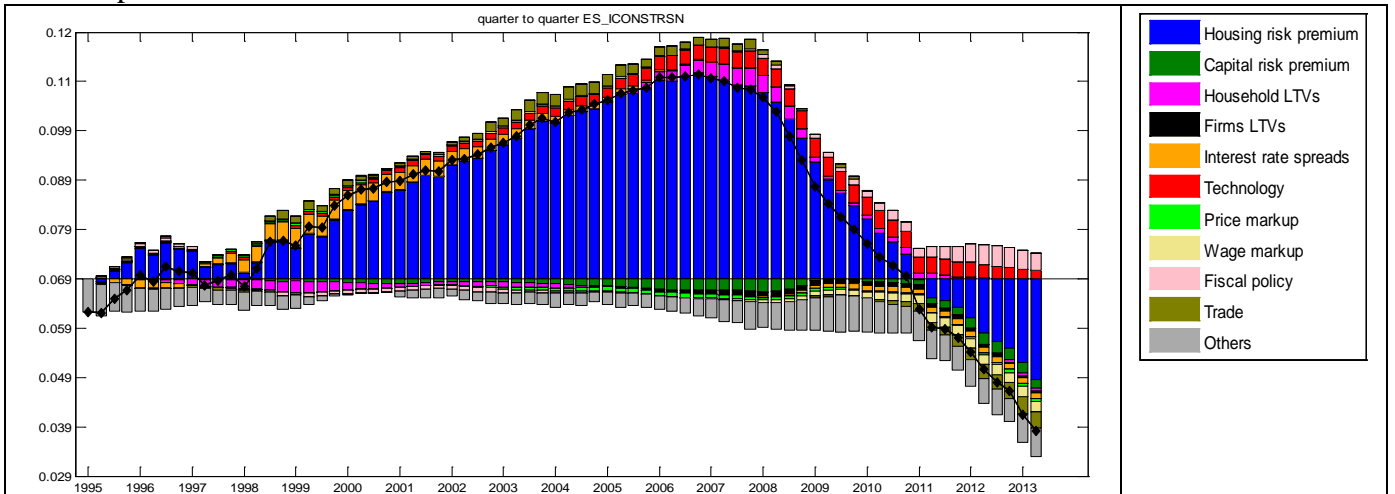
	Prior distribution	Prior mean	Prior s.d.	Posterior mean	Posterior s.d.	Interval	
ε^{UC}	Gamma	0.02	0.008	0.0319	0.0071	0.02	0.0434
$\varepsilon^{XI,d}$	Gamma	0.04	0.016	0.0558	0.0238	0.0174	0.0912
$\varepsilon^{XI,f}$	Gamma	0.04	0.016	0.0585	0.0184	0.0266	0.0881
ε^{er}	Gamma	0.01	0.004	0.0012	9.91E-05	9.96E-04	0.0013
ε^{η}	Gamma	0.02	0.008	0.0139	0.0027	0.0096	0.0184
$\varepsilon^{\eta,Constr}$	Gamma	0.1	0.04	0.1302	0.0379	0.0685	0.193
$\varepsilon^{\eta,M}$	Gamma	0.02	0.008	0.0319	0.0055	0.0228	0.0404
$\varepsilon^{\eta,X}$	Gamma	0.02	0.008	0.0205	0.0038	0.0143	0.0262
ε^{CG}	Gamma	0.005	0.002	0.0018	0.0001	0.0015	0.0021
ε^{IG}	Gamma	0.005	0.002	0.0032	0.0003	0.0026	0.0039
ε^{IM}	Gamma	0.005	0.002	0.0026	0.0008	0.0012	0.004
ε^N	Gamma	0.05	0.02	0.0794	0.0129	0.0579	0.0989
$\varepsilon^{M,EA}$	Gamma	0.0025	0.001	7.69E-04	7.13E-05	6.54E-04	8.87E-04
ε^{PC}	Gamma	0.0025	0.001	0.0037	0.0003	0.0032	0.0042
ε_t^Z	Gamma	0.005	0.002	0.0083	0.0019	0.0052	0.0116
$\varepsilon_t^{Z,H}$	Gamma	0.01	0.004	0.0092	0.0025	0.0053	0.0131
ε^{rpland}	Gamma	0.01	0.004	0.0135	0.0043	0.0068	0.0203
ε^{TR}	Gamma	0.005	0.002	0.003	0.0009	0.0017	0.0044
ε^W	Gamma	0.02	0.008	0.0303	0.0065	0.0192	0.0403
$\varepsilon^{XINF,d}$	Gamma	0.04	0.016	0.0416	0.0165	0.0153	0.0663
$\varepsilon^{XINF,f}$	Gamma	0.04	0.016	0.0587	0.0194	0.025	0.0901
ε_t^Y	Gamma	0.01	0.004	0.0069	0.0008	0.0055	0.0082
$\varepsilon^{IM,REA}$	Gamma	0.005	0.002	0.0207	0.0021	0.0171	0.0241
$\varepsilon^{IM,ROW}$	Gamma	0.005	0.002	0.0041	0.0008	0.0026	0.0054

D. Additional Shock decompositions (baseline model)

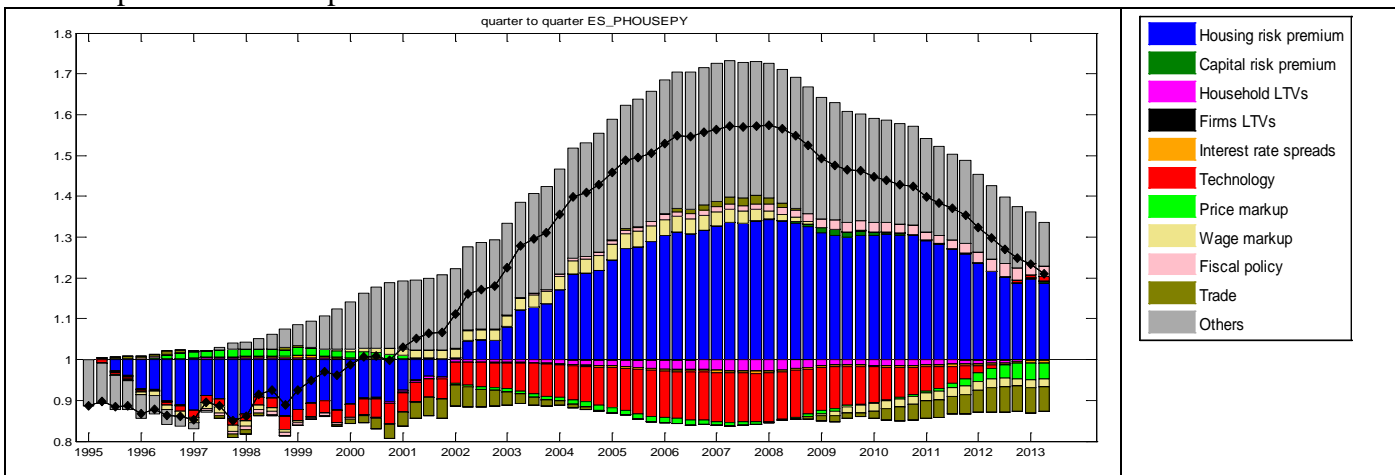
D.1 Spain: non-residential investment/GDP



D.2 Spain: residential investment/GDP



D.3 Spain: real house price



ECONOMIC PAPERS

As of n° 120, Economic Papers can be accessed and downloaded free of charge at the following address: http://ec.europa.eu/economy_finance/publications/economic_paper/index_en.htm

Alternatively, hard copies may be ordered via the “Print-on-demand” service offered by the EU Bookshop: <http://bookshop.europa.eu>.

HOW TO OBTAIN EU PUBLICATIONS

Free publications:

- one copy:
via EU Bookshop (<http://bookshop.europa.eu>);
- more than one copy or posters/maps:
from the European Union's representations (http://ec.europa.eu/represent_en.htm);
from the delegations in non-EU countries (http://eeas.europa.eu/delegations/index_en.htm);
by contacting the Europe Direct service (http://europa.eu/europedirect/index_en.htm) or
calling 00 800 6 7 8 9 10 11 (freephone number from anywhere in the EU) (*).

(*) The information given is free, as are most calls (though some operators, phone boxes or hotels may charge you).

Priced publications:

- via EU Bookshop (<http://bookshop.europa.eu>).

Priced subscriptions:

- via one of the sales agents of the Publications Office of the European Union (http://publications.europa.eu/others/agents/index_en.htm).

