

6-3-1859

## [Untitled Clinical Notes]

John Willson

Follow this and additional works at: <https://jdc.jefferson.edu/medicalnotebooks>



Part of the [History of Science, Technology, and Medicine Commons](#)

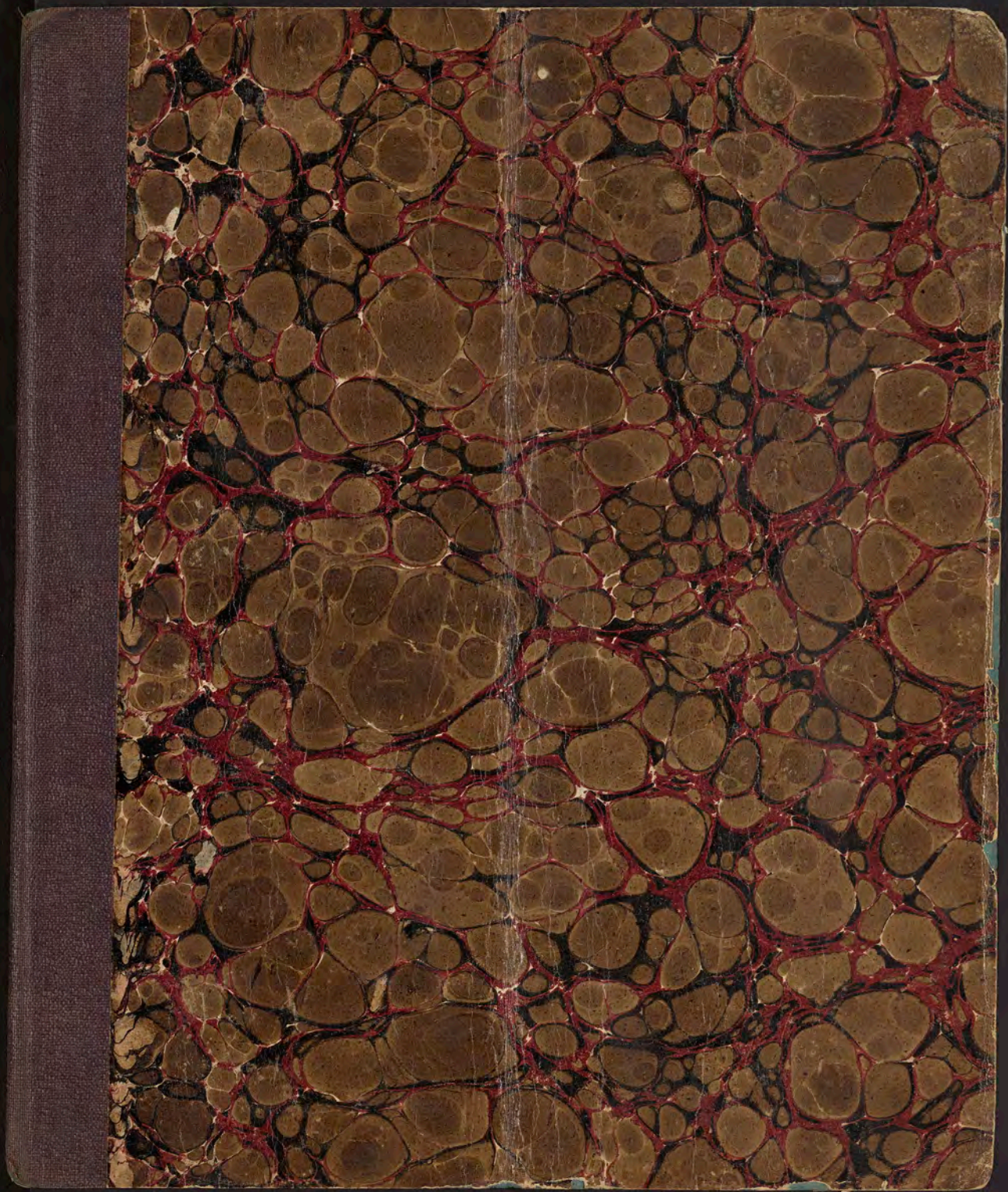
[Let us know how access to this document benefits you](#)

---

### Recommended Citation

Willson, John, "[Untitled Clinical Notes]" (1859). *Medical Student and Faculty Lecture Notes*. 26.  
<https://jdc.jefferson.edu/medicalnotebooks/26>

This Article is brought to you for free and open access by the Jefferson Digital Commons. The Jefferson Digital Commons is a service of Thomas Jefferson University's [Center for Teaching and Learning \(CTL\)](#). The Commons is a showcase for Jefferson books and journals, peer-reviewed scholarly publications, unique historical collections from the University archives, and teaching tools. The Jefferson Digital Commons allows researchers and interested readers anywhere in the world to learn about and keep up to date with Jefferson scholarship. This article has been accepted for inclusion in Medical Student and Faculty Lecture Notes by an authorized administrator of the Jefferson Digital Commons. For more information, please contact: [JeffersonDigitalCommons@jefferson.edu](mailto:JeffersonDigitalCommons@jefferson.edu).



$$4 \overline{) 70 = \text{all}}$$

$$\underline{2 \ 17} \ 2$$

$$8 \ 3 \ 4$$

$$1 + 1$$

$$4 \overline{) 70}$$

$$\underline{17} \ 2$$

$$8 \ 3 \ 4$$

$$70$$

$$\underline{26} \ 2$$

$$26 \ 4$$

$$\underline{26} \ 2$$

$$\underline{26} \ 4$$

$$26 \ 4$$

$\frac{p}{dl}$

Do not know whether should convert for time I see here.

giving the answer for time

Subacute Meningitis.

Nov. 20/57.

Case of Dr James Garrick

Caroline Van Horn, Age 4 years, black eyes, smart child, has not enjoyed perfect health for some time, has had measles, & scarlet fever, & has suffered from worms & gravel. About 5 weeks ago, complained frequently of her limbs hurting her, and also of pain in back of head. Was constipated, had no passage for a week. Frequently picked her nose, & was blowing through it all the time as if something was in it, which she wanted to get out.

Vomiting set in about this time. On 23rd, vomiting had ceased, for some time, after taking some lemon whey, but convulsions had recurred set in, having them every 3 or 6 hours. Picking at nose still continued, prelse in A.M., 58, fine firequar, respiration sighing, & still nodded her nose, as if smelling something disagreeable, pupils natural, intelligence good, but a starch fixed expression of face, Annoyed on being disturbed, did not complain of head, no swelling of head, limbs extended, eyelids entirely closed when sleeping, early awoken, appetite poor, tongue, yellowish-white coat, thicker & yellower at back, edges pinkish, conjunctiva clear,

4 P.M. Stas had a convulsion which lasted about  
10 minutes, eyes cast up, arms firmly flexed,  
wrist, very much flexed, fingers flexed, at meta-  
carpo-phalangeal joints, but straight, thumb bent  
at carpal articulation, but straight, and turning  
towards palm, body bent like a bow, neck not  
stiffened out so as to rest on the verteb. pulse,  
<sup>was</sup> 120, fell to 72 after the convulsion, was very  
irregular, & intermittent - no frothing at mouth,

Friday June 2/89

Ammonia in urine  
makes it of a cherry  
color. Put Acetate of  
Lead (solution) & it  
will throw down a  
fawn coloured pre-  
cipitate.

Young child, 8 years <sup>age</sup> of  
father died of Phthisis  
Pulmonalis, Maria  
look in her eyes of  
the same, her counte-  
-renance, face, eyes,  
& all that indicate the  
same. She is much  
less than ~~she was~~  
before.

10grs. 3 times a day.  
Chloride of Potash  
Fowler's Solution

3grs. every day for  
2 or 3 months

Wm Darrach Wm Darrach Wm Darrach Wm Darrach Wm Darrach

Friday, June 3rd 1853 12 M. Wm Darrach

Dr Darrach

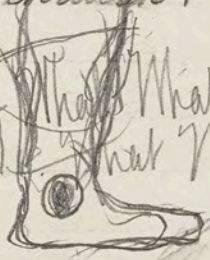
Peter Mapey, Her last Sunday. Psoriasis Guttata,  
Had a rice meal poultice, quilted between a skin  
graze & stout muslin, the skin graze on the inside,  
so as to allow the pus to bridge through. Come  
again next Tuesday. Application of rice meal  
or any other mess the condition whether there is  
a want of epidermis. Reduces the erythema,  
which exists. Always inquire into the person's carry-  
ing out the directions of the Doctor.

Percussing ought to be with left hand, as the arm & finger as the  
hammer. In percussing, lay the finger or fingers, as needed,  
in spaces between the ribs, in a straight position. Leave no  
space under finger or finger, that air can hinder sound.  
Then strike with the finger of the right hand firmly together  
by the thumb, making this flat hand at wrist, keeping  
the wrist fixed, as a fulcrum for the muscles to work on.  
In a thin chest, there is only needed one finger of each  
hand, one as an arm & other as the hammer.

What does purpura in the  
urine indicate?

What

What What What What What  
What What What What



Cartilage Green Age

Innumerate Fear,

Been sick 2 1/2 weeks

Nothing to all whether it is  
Chronic or acute, Sensation has to do  
with surfaces, called pia mater,  
arachnoid, plexus, peritoneum, or  
serous membranes, mucous  
membranes, or the lining of bowels etc.

When diseases are acute, they act  
on these surfaces or skin surfaces.  
These are the sensitive surfaces,  
When they stop

What What What  
What What

Good a chill, (sensations) on the  
dermal surface, & then  
shock (muscular). Then



How many are  
there?

3 kinds of convulsions,

Took it at 3 O'clock P.M.

Had it for 2 hours,

<sup>of chills</sup> sensations for an  $\frac{1}{2}$  hour. <sup>Then</sup>

vigors for  $\frac{1}{2}$  hour.

Then had a sweat. <sup>Left</sup>

hot, & had fever, <sup>for an hour</sup> <sup>then</sup> <sup>sweat</sup> continued

till 7 P.M., & then fell

asleep, when she awoke

with vomiting, green,

& bad smell. This took

place at 6 O'clock. There

was no fever until day after.

When still fevers continued

at midday & vomiting fol-

lows. Intidien since

comes on in <sup>short strong</sup> evening

Interian at M. <sup>long</sup> <sup>muddled feeling</sup> <sup>at M.</sup>

with regular chills, then a

short fever & sweat. Had in

1st week, every other day, now

every day. Passed from

Interian to double Interian

alternately mild & strong,

on Monday, very bad,

" Tuesday, some better

" Wed.                     

Was not so much after

Intermittent fever a general disease  
with new hepatic congestions. Very  
sore on liver when she has chills.  
In remittent, stomach & bowels  
is involved. In inter, liver is affected.

Give her Quinine.

Rt. Sulf. Cinchonine 3℥

Rt. pills of S. P. <sup>Murphy's</sup> ~~3℥~~

Since 12 yrs is her before she expected  
time for chills & when commenced at 7 O'clock  
P.M. & continued during night  
ought to have been taking them.

Today. Chills will come on

at 3 P.M. Keep out of damp.

& cold air & eat simple diet.

Hope that will stop chills. When they are  
stopped, they are liable to return every 4 days.  
Called the hepatic chills, from that

It will cause congestion of <sup>Jambine &c</sup> liver.

Then secondary congestion in stomach

lungs, then abdomen, uterine

vessels, hemorrhages, then on brain

thence the febrile, spinal cord  
then on nervous system, epilepsies, neuralgias,  
epileptic convulsions,  
Sometimes on kidney. So must

hepatic chills, remedy is to use

arsenic, Donovan's & Fowler's solution.

Chills having been stopped,

Quinine has to set,

Peruvian has to set. Quinine has to set.

Come back on Friday, 12 M

Theresa Powell here before.

If a child has a pale face, there  
is something wrong, never judge  
a child in this condition

Very evil. Calomel gr <sup>1/8</sup> was  
given. Done to act on liver, and to  
relieve that, and by that means  
the bowels. Bowels not new or

pass. Evacuation normal, after

open the bowels, are green. They are

green colour, <sup>or dusky</sup> orange, and brown

stomach. Continue same treatment

Give her nothing but breast milk.

Give her some iron powder.

P. Hydrarg. Chlorid. with

D. gr <sup>1/8</sup> to a dose every two hours

Mary Cahill, Cloasma

Using Donovan's. Some more

on back, but of a different sort.

All gone from arm. Continue

same treatment.

Peter Murphy, Age 65, lives before  
Francis Gurrata,

Exanthemata, such as scarlet, fever  
measles

Vesicular, little elevation containing  
serum & fibrin and pus,

Bulla

Pustular, such as cutaneous pus, yellow

Papilla, elevation without any fluid

Tuberculous, hard lump.

Squama, scaly, this is of the  
kind, Francis Gurrata,

Transudation all passed away,  
circulation better, swelling gone  
down. Eat out. meal good for  
dinner time & put eye near  
poultice on outside of leg tomorrow  
Friday.

William Dougherty, Age 8.  
Gonorrhoea

Rf. Sulf. Quina & Oprij

Dr. Boeders 12

S. Give him one <sup>before meals at bed</sup> ~~very~~ <sup>time</sup>

Jefferson College

27 years of age

unmarried

Tumor in Mammary  
gland, nipple retracted,  
gland well developed, Cause  
of this retraction as a  
tumor, hard, <sup>with</sup> sharp, lancinating  
jagging pain. Lumps as a  
bullet's eye, probably existed  
there for great while, noticed it  
for last 3 or 4 weeks, least  
good opinion. Scrofulous.

in earlier stages. Well advanced  
incomp. refills, hard tumor.  
Nothing expected from  
medicine, except for general  
health & as this woman is  
healthy, no use from its. Iodine  
is the only thing, very thing  
for it, let the whole gland be  
exposed, but not now. Let it be  
not pressed by anything, &  
wait till we see whether pain will  
decrease. Show it will be true.  
But this pain is a great part of all, and  
some have on a week's

here before.

Stricture of oesophagus. Nuclei  
better, can swallow easier, came  
on gradually to be better. Woodrow  
probably more. Came back again  
Another new case. Has eaten  
nothing but soft food for the last 10  
weeks. Came on suddenly, in 2  
weeks. Long time in labor. Can  
scarcely eat. Can drink easily.

tongue much coated, appears  
poor, looks eating headaches  
pain goes down throat & chest  
probably passes easily down  
stomach, large one does not  
stricture very much same as  
the previous case, in same  
situation. Trouble depends on  
derangement of digestive organs.  
No herpetic medicine like  
spinal irritation although  
being in the digestive organs. Give

here. Blue leaf grv  
C. Aloes grv  
Comp. Lith. Colocynthis grv  
Peppermint gr. v  
Spice. gr. i  
each 4 or 5 times

Also give her  
Rt. Zinc Iron gr 20  
Zinc. Mus Vomica gr 10

Spine worked hard a day  
into much of cold water, &  
all the body, in some way &  
Keeps her on good diet, plain  
simple food

Child, 4 mos old. Nerve  
on head. Enlargement of  
trachea but higher than at birth  
Nuclei. Subcutaneous  
Cubensous. Enlargement of  
Arterioffer, Venous. Use  
Stimle injection as in case  
before, in some way. Tumor  
solidifies instantly.

in a yellowish  
specimen  
of the  
of the  
of the

Woman with Bunion on foot  
lat. hardened cellular and  
inflamed with vera 3rd  
Epistaxis of sacrospinal  
Microsc. Inflamed part  
specimen already followed by crisis as  
with system previously has been  
prepared. Now drink cold water  
-hardly, with short or long rest  
Kessell will be the continuation of the  
stricture in the absorbent vessels

This Division

This division is substantially a new thing & is of great good in anything of this sort, carbuncles, abscesses, &c.

This Division

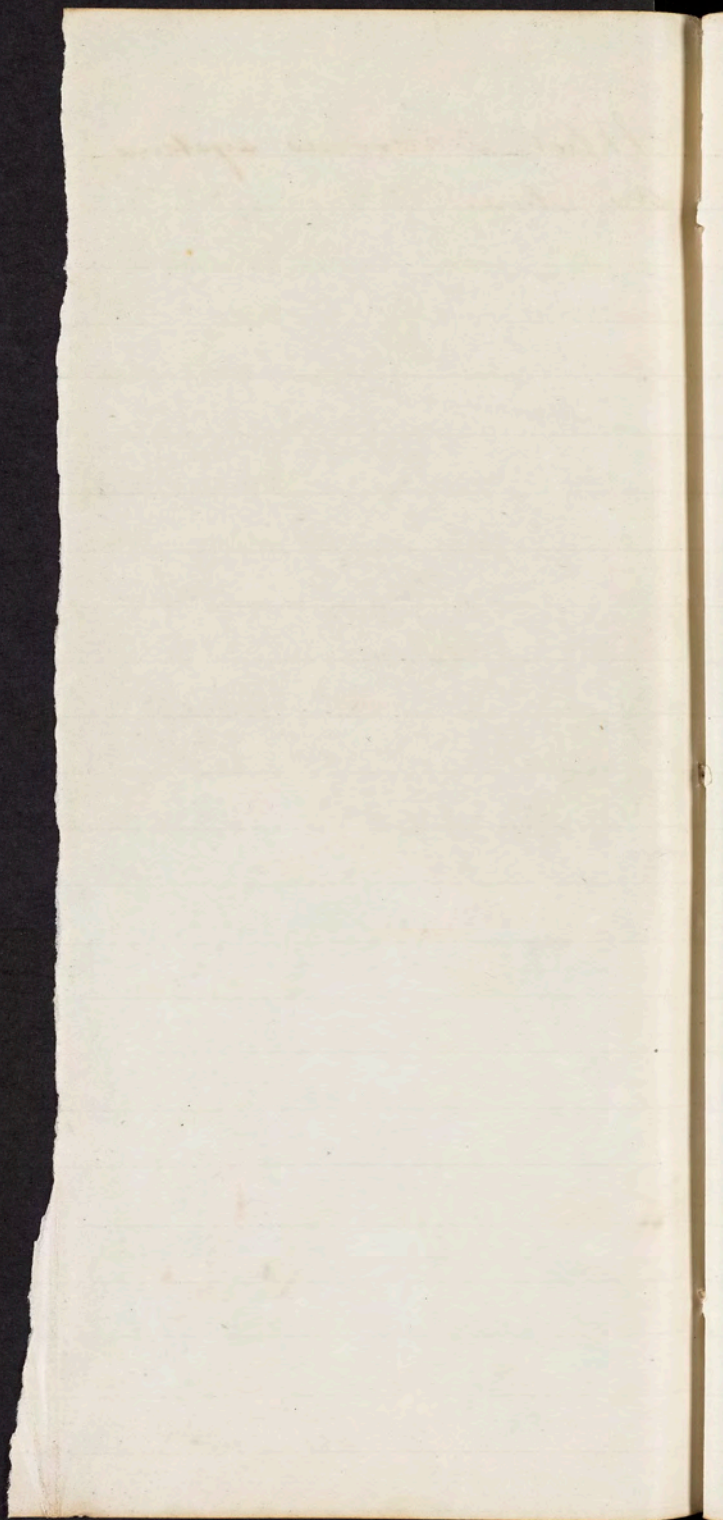
Wash into Varicose Veins of leg, Saphenous & its branches. Wash 2 or 3 times immediately after being principal use. Wash made of equal parts of laudanum & weak lime made into paste by alcohol. Put it on a small piece of cloth & keep it on the vein about 15 min. this causes closure of the vein & the blood is forced out & at last the vein is obliterated.

Use with imperfect action. On introducing frigid fluid a sort of dephlog. is introduced upon disease & perf. of it in it makes small puncture, then introduce frigid as a Boon. Introduce frigid 2 or 3 times a day & so direct it.

Jane Parkison, Age 8  
Been sick 2 weeks,  
Has chills every day,  
every other day worse, last  
15 minutes, <sup>then</sup> sweat another  
15 or 20 minutes. Have  
them about 7 or 8 A.M.  
sometimes on bad days  
until 2 or 3 P.M. in spells.  
Feels very weak after the  
attacks. Had them at 7 or  
8 this A.M. Pulse 72.  
On bad days has them  
Borels all regular,  
Appetite, poor. Chills  
& sweat follow each other  
with intervals until <sup>6 P.M.</sup> P.M.  
on bad days & on mild  
days only till 12 M.

R. Cinchona. Sulp. ~~off~~  
So frigid on days mild every  
3 hours & on bad days when  
chills are off in P.M. every  
hour

What 2 nervous systems  
are there.



Friday, June 20, 1859



Congestive  
Friday, June 20

Many Cerebro-Spinal affections  
seem as a man going a business  
& not knowing any thing but  
doing very laboriously, in  
going about his business  
without success.

Give him Phosphorus  
diet, & it will come back  
again & <sup>be</sup> cured.

Sometimes in Stricture of the  
urethra, small part of sole of  
foot is pained. In passing  
urine pain is stopped almost  
immediately. In such  
kind of disease it is in subcut  
organization. In heart disease  
agria pectoris, many complaints  
of pains in arms, trunk, legs  
in subcut organization.  
Upper limbs made a complete  
disease of heart & thoracic  
part in organization.

Lower limbs of the abdominal  
 affections. Individuals who  
 are constantly moving their  
 head, pulling, the movement of  
 the muscles of face, mouth,  
 nose, but the eye is affected  
 constant squinting, but the  
 eyelids with accessory muscles  
 of neck are connected. If there  
 be a disease in muscles  
 of neck, there will be a  
 symptom in eye.

All poisonous plants have  
 five anthers & one stamen & style.

Bromide of Potash acts by  
 restoring nerve power. Good in  
 Leucorrhoea, Lymph, ~~and~~  
 Phosphoric acid, Ammoniated  
 in all cases, give most to  
 the ganglion. Bromide of Potash  
 is associated here likewise. Function  
 of Cambander acts by increasing  
 the strength of another part & thus  
 strength by division

~~Each organ has its~~  
 nervous system. ~~central~~  
 sensory system. ~~central~~  
 eye feet heart &  
 most much to anterior  
 sub system.

Friday June 25

Symptoms may all  
 be in sentient system  
 disease in nutrient  
 & vice versa. And as  
 pain is decreased  
 by an affection of the  
 pain in the  
 hip disease  
 Many arthritic affections  
 may be cured by applying  
 synapisms over the nerves

6	25	19
10		175
60		21
196		26
60		
256		

Many Nerves,

Pain in side;

pulse 72.

Ordinary Quilts, neither  
frequency nor contraction.  
Of frequency or contraction,  
few should be suspected. If

skin was + hot, moved in  
crease that suspension, apt  
to show, tongue was coated,  
3rd argument for fever. Try to  
nothing, he has about it. Fever  
<sup>at times of strength</sup>  
3 kinds of strength, muscular  
organism, symptoms, something in  
head, lungs, throat, abdomen.  
a. Sensitive.

upward

Features in face indicate condition  
of lungs & of brain's  
the eyes, most severe something like  
Abraham's, no

Breathing related to action of chest

Lungs governed by inhibition system

chest by cerebro spinal system.  
Besides the accessory nerves, in  
great difficulty of breathing, eyelids  
are raised, pupils dilated, shoulder  
group. If an individual can count  
20 or 30 or 40, can see whether  
lung is right. Nothing wrong  
in face, eyes

Feels weak in back, Has had it  
about 2 weeks. May arise from  
want of sensitive power, In Berlin  
fever, there is a pain of back. In  
Small Pox, a great sympathetic,  
intense weakness of back. Pain  
in the back, had it for 3 weeks.

When she lies down, seems much  
Walks quick, has stiffness of motion  
when far, pain in back.

Been sick 3 weeks, Pain in  
side, in side, in neck. Has  
shuddered for 3 weeks, have  
not stopped, going constantly, very  
abundant. In W. C. Bell's case.  
Came to town on Friday A.M.

working on sewing machine  
has caused venous congestion  
& her periods do not cease

27 216 (8)  
216

8  
21  
216  
50

Mr M.D.'s Infant <sup>act. 11 mos</sup>  
Child of ordinary good health  
strong frame, bacher fat, no  
disease from early life  
except habitual constipation  
for which it rec'd doses of calomel &  
cro-tin,  $\frac{1}{8}$  to  $\frac{1}{4}$  grs per dose with  
concomitant emetics. In early part of  
June, child cut 4 teeth without discom-  
fort or any troublesome symptom. On A.M.  
of 20 child seemed to be in ordinary  
good health. 3 P.M. child had a  
strong slimy discharge from bowels  
after which very violent colicky pains.  
Dr. Fink called & found child  
cold blue depressed pulse, copious  
discharge of clear blood from nape.  
Child died on Sunday Night in  
spasms. Post Mortem.

Intercerephion, 8 inches long, 3 folds  
of bowels, colon pushed up into small  
bowels, 8 inches past the valves great  
inflammation there.

many cases of intercerephion  
occur in death struggle but there  
there is no infant that can be  
drawn out easily.

Many cases of inter occur

Tuesday, June 28th/59

Mr W

Lueria

What is good merely as a nutrient for a debilitated stomach, to stimulate the appetite.

How does the ammonia of Copper act on the eye? Explain the Adema in the eye.

Mary Creny, Her before.

Chronic Iritis

Intermittent Period.

Is this a regular sequela of the disease? or an irregular inter. period? In all these cases sequela of Iritis. Iritis is the most notorious for these sequelae.

In want of knowledge of the case we call it the above. It seems

to have gone into nervous centres in form of neuralgias, one of the forms coming from Intermitte.

Carben Fowler's solution, 10 drops every 4 hours, for a week: see whether she is under the anesthetic effect. Adema of the eyelid.

Lueria, why does it produce this effect?

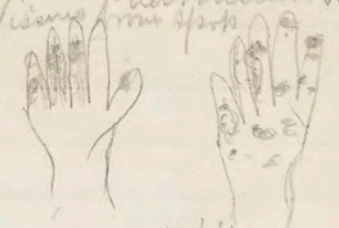
upper eyelid  
(10)  
lower eyelid

Adema under this is <sup>anatomical</sup> cellular tissue, <sup>above</sup> the adipose, <sup>below</sup> the sclera, <sup>below</sup> the sclera, adipose, terminates as outer coat of eye. Anemic produces not merely local but anastomotic Adema, but this reappears in this place. First effect is of anemic contracted frequent peels.

June 26. Eyelids feel swollen in A.M. Sometimes tongue coated. It has some amount of fever. Since she was here before, very swollen Friday & Saturday.

Felt very painful on top on Friday. Felt all over eye. Try the above medicine at same time.

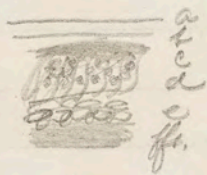
Henderson, Pomeroy, Palmaris, Hagerseorse. Last year on the hand, now on fingers. Prescribed Urea, Iupharmin, but as medicinal from spots.



For treatment of the ulcers on the fingers, I have prescribed Urea, Iupharmin, but as medicinal from spots. V. H. Urea. Apply this 3 times a day.

*Zypharicum* has not done good.  
 Tarchini before Tyson's powder

*Rhonia*, structure of parts of <sup>eye</sup>



- a. Deme
- b. Corymocytes
- c. Thick lids.
- d. Pits made of fat cells, composing  
 epithelium, consisting of cells, fat &  
 beds connecting them
- e. Larger cells made yellow fatty  
 intercutaneous <sup>processes</sup>  
 non elastic <sup>manthulation</sup>
- f. Faccia.

This is not universal, if the part  
 of the penis were at, organs of generation  
 would be filled up + embarrassed  
 function, but for there is a strict  
 basis. If the fat accumulated in  
 same way in parts, great embarrass-  
 ment would succeed. The skin eye  
 it is so arranged as not to be under  
 the movement. As persons become  
 dyspeptic, parts under the eye become  
 boggy, showing debility. Hence with  
 Arsenic. It does this

stands sometimes well  
 under influence of arsenic  
 also of opium.

*Corvone tuberculata* has  
 a wide spread influence  
 on parts in poisoning,  
 Arsenic catches hold of  
 parts & stays there in  
 poisoning.

Very, the gastric juice  
 strong in youth, weak  
 in persons, weakened by  
 disease. Most cases  
 happen in the former  
 category.

### Indications.

Case on two pages before  
 Constant constipation, a defect  
 in large bowels, bloody discharge  
 pain chiefly in colic, cannot be  
 a doubt. Is it not  
 always the case in them?  
 Is it not always owing to  
 debility of large bowels?  
 Is it not always in young children  
 - woods

Does it ever occur in adults.  
 The pruritic action of bowels  
 in childhood is not constant  
 through adults. Nervous irritability  
 more irritability. If return  
 has been constipated in infan-  
 cy it is most abnormal.  
 A Reverse action often takes  
 place if it can't go down, it  
 will go upwards.

Aug. 30th 1859.

Joseph Mackay, Age 41.

How long.

Leprosy Vulgaris

Leprosy Vulgaris, disease  
 generally appears in joints,  
 here in ankle. See eruption on  
 wrists of Aug. 27th 1859.

Same time

Rt. Indent. bell phar. 9grs

Afingge 3f

+ Fowler's solution 3f

.10 grs. 4 times a day.

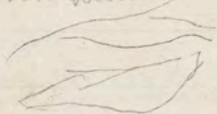
Appearance. 12m. No scales,

4 Lumpy spots almost papules, 3  
 smaller, 2 chapped, slightly elevated,

on upper part, surface  
 plates. + not red, when  
 there are pimples in central  
 part of patch, there are none,  
 when fingers pressed in place  
 of red spot, leave a yellow  
 colour, which by a moderate  
 circulation in capillaries  
 resumes a moderate  
 redness as in Erythema  
 Scelerum, etc. Pressure  
 of fingers also gives sensation  
 of thickened derm, hence  
 we say that this disease  
 implicates the derm. This  
 thickness of derm with  
 caducous epidermis,  
 making leprosy, is  
 associated with a trans-  
 lation of gelatinous matter  
 under derm, so as to aug-  
 ment the size of part,  
 all which extends deep  
 over the entire foot giving  
 the ankle 3 + 4 times its

Normal, bulk of so  
 the heel, instep, sole of  
 foot, & each toe, making  
 thus a limb so deformed  
 & bulky representing the  
 foot of an elephant that  
 the disease is called  
 "Elephantiasis, which  
 comes under head of  
 "Tuberculosis, which means  
 nodding up of the skin.

On left leg spots much  
 less distinct, surface rather  
 paler. Lender's has given  
 him the Admiral's medicine  
 although not much



pulse 96, soft & full, not contract-  
 -ed, feels full in stomach,  
 no effect on tongue. Stools  
 regular, feels vigorous in some  
 hours with some  
 treatments, & come back in  
 Friday. Continue diet.

~~Isabella~~ Rebecca Low  
 Married 4 yrs  
 Lodging  
 R. Conscience

Ferri Sulph ʒss  
 Liw Sulph grxx  
 Acid Sulph. Annuat ʒ. s.  
 Aqua ʒiv  
 ʒ. Teaspoonful 3 times  
 a day

Ellen Dougherty  
 Age 30, Married  
 Weakness, lightness of  
 head, had had 4  
 children, Married  
 10 years, youngest  
 2 1/2 years old.

Courses every 3 weeks,  
 Whites, had that  
 peculiar look  
 indicative of them.  
 Sleeps poorly. Very  
 weak. Had the  
 since last confinement,  
 feels sore on sitting  
 down. No clots in  
 menses, Very much  
 pain in them



burning pain, water  
 burns previous & after.  
 being unwell, intermittent.  
 head. These are symp-  
 toms always of some  
 acute affection of the  
 uvea. also bonds cornea.  
 & pain in packing faces,  
 strains in doing this  
 all symptoms as above  
 & principal ones will be  
 unwell in <sup>about</sup> 10 days.

Rx.  
 Stychnia graniflora  
 Sig. one three times  
 a day  
 Take a bottle of best  
 Clant. Wine of pappul  
 in 2 glasses of water  
 Use as injection twice  
 a day. Work little

Rx.

Chloroform gr xv  
 Aet. Plumbi gr x  
 Sacch. Alba ℥i  
 Aqua Menthae ℥jss

M.  
 Take every two or 3  
 hours

Pleasant drink for  
 Infants during teething  
 to regulate Bowels

Aug. 31, 1857.

Dr Spooner's Clinic

David Fitzgerald, Age,

1 child, 12 1/2 mos. old.

Got conjunctivitis at lab.  
 Effect of bad cold caught  
 in eye, then this by rubbing  
 constantly has caused  
 Corneal Ulcers. It is  
 now inflam. of all mem-  
 branes.

Under treatment for 4  
 mos. in Mills' Hospital.  
 Took it in left eye July 17th  
 1858, on other April 1859

Was treated by Dr. Woakes then  
at Will's Hospital by Dr Littel  
now comes here,  
while here, Applied 4grs solution of  
Nitras. Silver to the eye give  
him a tonic of

R. Rerum Morchuy  $\zeta iij$   
R. Zinc. Ferri. Chlor.  $\zeta ij$   
S. 10 drops 3 times  
daily

R. Sulph. Cadmium  $\zeta ij$   
Sulph. Atrypice  $\zeta ij$   
Aqua  $\zeta i$   
S. drop in eye daily

Elizabeth Hughes, Married  
Trachiasis & conjunctivitis,  
eyelids much swollen, Wash with  
2gr solution of Sulph. Cadmium.  
little swelling &  
bulging caused by  
Schlorochitis, around pupils  
hairs much left in number  
& growing very slowly.  
Apply 4grs solution of Nitras  
of Silver to eyelids.  
same medicinal treatment as case  
above

Friday, Sept. 2. 1859  
James Jackson, Age 69.

Complains of pain in  
hypogastric region, left  
side, very violent.

Appearance of mouth,  
short, stout hook. No  
recession of gums. Only lost  
one tooth.

Pulse 60, Weak. Comes  
from North of Ireland. Was  
a Labour there, on farm.

Been here 30 years.

Has had pain <sup>for a week</sup>  
Eye sore, has had it for 20  
months. Apply this strait to  
eye, which is outwards the  
eye.

Pain, catching, stops breath  
Pain, when drops very  
violent, and when he  
walks very far. Water  
natural. Hurts when he  
presses hands around bones

Abdomen

Size by measurement, Palpation, Pain, Sensibility on percussion, Distension or Collapse, Borborygmi, Tumors, Effusion, Hernial Protrusions.

Bowels

Stools, - their frequency, quality &c  
Hemorrhoids

Liver

Size, as determined by Percussion  
& Palpation - Pain. - Jaundice &c  
~~of enlarged, exanimo blood microscopically~~

Spleen

Size, as determined by Percussion  
& enlarged, exanimo blood microscopically

Genito Urinary Apparatus

Uterus

Menstrual discharge { at what age it began  
                                  { its regularity & present condition  
                                  { amenorrhoea  
                                  { dysmenorrhoea  
                                  { menorrhagia

Leucorrhoea - character of the discharge. If pain, or much leucorrhoeal discharge, Examine os uteri and vaginal with speculum.

Uterine or ovarian Tumors - Pain in Back - Difficulty in walking or in defecation. Functions of mammae.

Kidney, Bladder &c

Lumbar Pain

Micturition - Easy, frequent, or otherwise.

Urine { Quantity in 24 hours  
          { Quality  
          { Color, Specific gravity  
          { Precipitates, as determined by the microscope, &  
          { Chemical tests, Action of heat, Nitric Acid &c. Test papers

Structure - ~~Uterine~~ discharges - Spermatorrhoea &c

Dr J.A. Meigs's Schemes

Scheme for examination of Patients

I. Antecedent History

Name Age Birth Place

1. Single 2. Married 3. Widowed

If a Female { a. Number of children  
b. Date of birth of youngest  
c. Marriages

Place of Residence - healthy or not

Occupation { Laborious - Easy  
Requiring confinement to house  
or exercise in open air  
Exposure to cold, heat or moisture

Social Condition { d. Wealthy - e. Comfortable  
f. Poor - g. Destitute

Habits of Living { h. Temperate  
i. Intemperate  
Irregularities of diet  
Excesses of any kind

Peculiar Habits { Habitual use of pencils or  
knives or articles of food  
Venereal indulgence

Hereditary Predisposition { j. Tuberculous  
k. Scrophulous  
l. Syphilitic  
m. Rheumatic  
n. Gouty  
o. Hemorrhagic

Health or cause of death of Parents  
Sisters or Brothers

Idiosyncrasies  
Temperament { p. Sanguine q. Nervous  
r. Bilious s. Phlegmatic

Constitution & Physical  
Appearance & Peculiarities { t. Robust. u. Feeble  
Development of trunk limbs  
deformities - Countenance  
Complexions or skin, their nature  
Hair  
Nervous Excitability  
Disposition to sleep  
Mental state of Parents

Intellectual & Moral Peculiarities

Previous Diseases

State of Health immediately previous to present attack

II. Present Illness

Exact date of present disease

How the attack began { suddenly, gradually  
with preliminary symptoms  
or not

Certain or Probable Cause

Course of the Disease

Previous treatment and its effects

Present appearance, condition and symptoms  
of the Patient.

Now study the most prominent distressing symptoms, by examining both functionally and physically the special system or apparatus in which that symptom appears to be seated. Study the other symptoms in the same way and in the order of their apparent ~~importance~~ <sup>importance</sup> & connections. If the diseased symptoms are almost entirely confined to ~~one~~ <sup>one</sup> organs, apparatus or systems, having examined these first, proceed next to those organs and functions which are most nearly related to —

## Respiratory Apparatus

### Nares

~~Diagnosis~~ of Schneiderian membrane. Discharges, sneezing

### Larynx & Trachea

Character of voice, whether natural, hoarse &c  
 Difficulty of speech, Aphonia &c  
 Examine Uvula, Fauces, Epiglottis, Tonsils, Pharynx &c.

### Lungs

Number of Respirations per minute

Character of the Respiration { Easy, Labored, Difficult, Swift, slow,  
 Irregular, Spasmodic, Painful, Sighing

Cough { Rare, or frequent  
 Short or long  
 Paroxysmal or not  
 Moist or dry

Expectoration { Scanty or profuse  
 Easy or difficult  
 Frothy, inspissated, frothy  
 Mucous, Purulent, or mixed. Purulent  
 Rusty, Bloody  
 Microscopical examination

Hemoptysis { Color, appearance, consistence and  
 amount of blood discharged.

Pain, seat & character { dull, aching,  
 burning or shooting &c.

Peculiarities in form of chest,

Size of chest,

Relative size of the two sides

Movements of chest, their regularity, strength

Vital capacity as determined by Sphygmometer

Resonance as determined by Percussion

Signs elicited by Auscultation, Palpation, & Scapulation

# Nervous System

## Brain

The Intellect { augmented  
 { Perverted  
 { Diminished

Cephalalgia - Hallucinations  
 Delirium, Stupidity, Monomania or idiosyncrasy

Sleep { Irrational Dreams  
 { Vertigo  
 { Stupor, Coma

## Spinal Cord & Nerves

Pain - Tetis points - Spinal Irritation

General and Special debility } - { Increased, Diminished  
 { Absent  
 { State of all the Senses

Motion { Natural or perverted  
 { Accompanied with fatigue  
 { " " " " " " " " " " " "  
 { " " " " " " " " " " " "  
 { Convulsions  
 { Tonic & chronic contractions  
 { Rigidity, Paralysis

## Digestive Apparatus

### Mouth

Appearance of { Lips, Fauces  
 { Teeth, Tonsils  
 { Gums, Pharynx

Taste in mouth

### Tongue

Mode of Protrusion, Size & shape, Color

Whether furrowed or coated, fissured, moist or dry, Condition of Papillae

Salivation, Mastication - Deglutition

### Stomach

Appetite { Degree  
 { Perseverance  
 { Fluctuation

Epigastric uneasiness or pain, Swelling, Flatulency, Eructation  
 Nausea, vomiting, Odor & character of vomited masses

No resonance in different spaces of abdomen. Pain night over the lumbar cord muscle. Neuralgic Rheumatism. Abused on 8 days ago. Tongue white-coated. Sleeps with windows up, also wind blows on him during work. Rheumatism from exposure to cold & damp

Rf. Don's Powder grxxiv

1. 3 gr each, 5 pills

1. Talc<sup>apiv</sup> at 10 a.m., ~~at 10 a.m.~~

5 P. M. + 10 P. M.

Lin on oak meal gruel, bid.  
Dinner Tuesday

Joseph Mendon, Neuron  
30 Ash Ave

Denne not as thick, not as rough.

All Strabotubum articles are good to prevent desquamation  
Pro encourage epithelias

Neuron B. Deane about eyes, Pulse 84. slightly contracted. Left leg much less acid, & less dark. Very little itching in either leg.

Come back on Tuesday.

W. Bellan's Clinic

Carbamide Rodgers, 25  
Nurses, regular, very full, flow freely.  
See carbamide from time they go away  
At the time they return pain is left by foot  
Joints are stiff  
Spine dull & aches  
Pain in breasts  
Trunks of the ovaries.  
Hothead, yellow eyes.

1st. Give her a tonic.

Rf. Styrchnias <sup>no</sup> ~~gr~~ <sub>15 pills</sub>

1. one 3 times a day

Come on Tuesday

Rp. Pills Hydrarg grj  
Aloes Pulv grij  
Specac grj  
Blue map on line  
Specac on skin  
Aloes on Rectum  
Sept. Oct 1859

Isabella Lynch,

Ferrucula,

Same as given  
Saturday, Chlorate of  
Potash, 3 grs 3 times a day,  
Coniow Friday,

Quinine Sulfate <sup>of Mercurthioquin</sup>  
Chlorate of Potash, R. S. 26.

Married, 2 children.

Weakness, Had it for 5 weeks

Has 2 children, youngest 1

10 months, suckling. Has

had her periods immediately

after birth of children regu-

larly. Smelling & pain in  
stomach since she was ill.

Took something which  
stopped them. Tongue <sup>little</sup> ~~not~~

cracked, ~~not~~, Pulse 72,

appetite, poor. Sleeps  
well. Child takes breast  
nearly during day, sometimes  
2 or 3 times at night,  
not much milk.

Dr Mclellan's Case  
Cancer does not eat  
enough meat. Besides  
this, menstruates from  
some peculiarity. Thus  
2 drains from mamma  
tuberc. ought to eat  
meat twice a day. Does  
not get enough nutritious  
foods.

Would give the fluid  
extract of Tereb. 5 drops  
4 or 5 times a day  
Constant flow from anus

16  
2  
a



Miley

Dysentery

Came her Opium & Fading  
Kramera, which last stopped  
Dysentery, but pain continued  
for her Morseria. Comes  
back with same symp-  
toms as at first.

Calamel gr ij

Species gr iv

Opium gr i

H. Pil. jr <sup>no</sup>

S. on every hour &

tar-meal gravel diet.

+ Mustard plaster on  
stomach toadden  
surface.

Rationals of the above as  
is follows.

Dysentery, as to the phenomena  
are shins & blood - discharges.  
Preceded by vomiting, followed  
by biliousness. When shins  
from mucous follicles, also  
secretion. When Blood?

From congestion of  
capillaries. When  
disease commences,  
congestion stronger  
hence blood. Generally  
congestion left, & the  
shins comes on.

Conditions of shins

1. Transparent

2. Translucent

3. Opaque

If there is blood,  
more discharges,  
of shins, left accor-  
ding to above conditions  
After opaque, discharge  
will be green frog  
pond, like mucous,  
which comes from  
portal system, because  
liver closes up, & as  
the case opens, liver  
commences to throw  
off. When large  
feculent spots are

observed, shows that there  
is a lessening of disease.  
Then stops for a few  
days, then a skin, without  
discharge then regular normal  
discharge.

Rationale of medicine.

Skin out of order, liver out  
of order, & the sphincter muscle  
Spice is given to soften the  
contracted & dry condition of  
skin, done by a cutaneous  
manner. Calomel controls  
the portal system, Opium  
relaxes condition of the  
sphincter muscles and  
stops business. Beside  
this, the mustard plaster  
on stomach cooperates with  
the skin. Thus Opium, Spice  
& Calomel make best

Wm. <sup>Wells</sup> ~~Wells~~ in dance  
a Spice was 1st used in  
Dysentery by  
Admission took it up in

England etc. There were  
the 3 combined, & antem  
in this than Speccatum.  
Danterton cured dysentery  
with Spice  $\frac{gr\ iij}{\text{gr}} \text{ radon}$

Man with Belious Fever  
Give him one of

James's Pills  
<sup>composed of</sup>  
Sulph. Antimony  
Guaiacum  
Calomel  
Jace in the  
A.M. 10 gr. Pulv. Rhei

Adon Boyle, strength  
swelling in the legs  
Had it since last Spring  
skin <sup>of leg</sup> very flaccid. Swelling  
in throat very hard.  
Symptoms of Scurvy  
Wastefulness, swooning  
difficulty in swallowing  
R Blue Mass, gr iij  
Jalap Pulv gr iij  
Dose at night & morning  
Dose morning & night

Child, Peter Paralysis

Age 2, 3. All  
back, Been sick 4 mos.  
Had measles, got well  
then took a fever, lesser  
part of evening. Had a fever  
when fever left him, but  
all power of limbs usually  
happens very suddenly during  
one night. Treatment  
concluded in this way.  
Has a fever when paralysis  
is formed, when parents get  
beyond him.

Pathology, owing to the  
softening of spinal  
cord, because too sudden  
no serious disease of  
arises themselves, but  
owing to an inflammation  
of the serous lining  
of cord, causing  
effusion of lymph, press-  
ing the blood

nervous fluid (which  
then undoubtedly is)  
Good chance for a  
Restoration in such  
cases, to get accurate  
knowledge of  
Treatment, they generally  
remain the same way as  
they are found in the  
morning, then making  
progress very difficult,  
If the above conjectures are  
right, counter irritants  
are very good, actual  
cupping, blisters &c are  
good, also applying  
medicine to improve  
general health.

Appetite, poor, sleeps poorly  
Give him some  
preparation of iron, thus to im-  
prove the blood.

R. Ferri. Sulph. gr  
6 Quin. Sulf. gr  
2 Zingib. Symp.  
R. ʒr. ʒ gr. ʒ gr. ʒ gr.

add to each dose a  
couple drops of Nux Vomica.  
Let him have milk, &  
sweet potatoes & such things  
Give him exercise in  
open air.

But on spine the  
following

Veratris gr x  
Gard grj  
St. Ung.

S. Juice a day,  
If case was recent  
would apply bleed  
but it is chronic.

Or  
A. Juice grj  
A. Juice grj  
Har. A. Juice grj

Infirmary  
Sept. 5th 1869  
Lawrence Brady  
Age 30. Farm  
Pain in neck, when  
he goes to turn  
around. Bowels  
regular. A sore  
aches during night  
creeping pain, as  
if something were  
running between skin  
& flesh. Can feel as  
well as before. Pain in  
neck of same sort  
1st. Had a pain in tooth  
had tooth pulled  
out when pain spread  
to jaw & neck. Neuralgia

R. Juice. Sulph. gr xviij  
9 chalk  
S. one 3 times a day

Man prefers hand on back,  
feels trembling.

James Carroll  
& John Sumpter,  
Age 19 & 14.

Tenia Capitis.  
Had it for 5 & 5 years  
Rf.

Sweet oil  
Put silk - oil - cloths  
cap on head, head being  
slightly close, Wash 3  
times a day with  
warm water castile soap  
& then rub sweet oil on  
then put cap on.

Rf. Sulf. Magnesia ʒij  
Antimony Tartar ʒij  
Aqua Distil - ʒviij  
Syrup Simplex ʒij  
Tinc. Acorn ʒi  
S. Tartarousul many 4 hours.  
Rf. Sulf. Morphine gr ij  
Antimony Tartar gr ij  
Ext. Hyoscyamus ʒxxx  
et Ft. Pil. No. 6  
one at night

Asa Young about the  
street hospital?

Sept. 13. 1859  
Has had bites & stings  
1st time, came after taking  
a drink of ice water, when on the  
last 5 weeks generally

Ferrumcula not a  
local, it is a general  
disease.

came here a week & a  
half ago, & been better ever  
since.

Age, associated with  
ulcers, &c.

then eruptions, it gives  
a vitality to the blood.  
Increases vitality of blood, as  
suet does to meat, as an  
element of preservation.  
If an aged person comes  
with a sluggish complexion,  
give it & you will miss. Always  
give it for age.

She is not entirely <sup>well</sup> yet.  
Keep her for a week longer.  
When it enters stomach,  
immediately enters  
circulation ~~and~~

quickly over whole system  
Veins are absorbents, & the  
absorbents are only tributary  
to veins. Through whole  
system in liver while, which  
does the good. Potash are  
medicating agents. Would  
call Chlorate of Potash  
a nutrient remedy.

Psoriasis

This woman has been  
under treatment for a  
week & a half, and has im-  
proved ever since. Appetite  
better, very poor before,  
sleeps better, which she did  
not do before. Been sick  
for 6 weeks altogether. Has  
given 5 grs 3 times a day.

Liver not acting well, tongue  
turned, ~~of yellowish~~ ~~of cinerifera.~~  
Bilious Fever.

Gave her

R. Podophillin. gr<sup>ss</sup>  
Comp. left. Colocynthis gr<sup>ij</sup>.  
St. Pitt. Mt. l.  
I. one every eighth time  
This is much better.

St. Catharine Springs

Salts of Calcium Chloride	295.40
Magnesium Chloride	1289.76
Sodium Chloride	781.36
Iron Protochloride of	13.76
Shepher of Lime	16.32
Lime Magnesia Carb. of	2.08
Magnesia Binucle	2.01
Magnesia Iodide	2.11
Silica & Alumina	2.47

This water is added in concentrated  
form in this party.

Given in a solution, in  
proportion of a dram in  
4 ounces of water, 5 times  
a day.  
A Lady with palpitation  
of heart with urine to  
1004 to 1040.

Principle of entering into  
blood is endogenous, on  
this we dilute things  
to be taken into system.  
But we would give iron  
this way, if we could, but  
we can't, but it is given  
after meals to be digested  
& sap into system with  
bolus. If we gave both  
Canada water, would  
give iron after meal  
& wait before

McCall's Case  
Catharine Rodgers  
R. Sulph. Ferri  $\mathcal{ss}$   
Sulph. Zinci  $\mathcal{r} \times \mathcal{v}$   
Acid. Sulph. Aromat.  $\mathcal{ss}$ .

Man with Neuralgia  
Rheumatism. Gave  
him Dover's powder.  
& wine of Colchicum  
at first, Colic back  
~~no better~~. No regular  
pains. feels as if he  
were struck. Since took  
medicine, does not  
feel it in hip. Art. 45.  
Had it since January  
Feels relieved. Not so  
much pain. Feels  
only with pains  
Went any yellow  
Kind of sediment  
Continue Treatment  
& go to Dr Klapp

Dunlop's Ferro-Saline  
is better for achrocolic  
to produce peristaltic action  
It stops torpor of liver.

R. Magnesia sulph. ʒi  
Potash Bicarb. ʒij  
Ferri Sulph. ʒi

Put in a pint of  
water. Give ʒsscup  
full in the morn before  
breakfast

Fanny Martin

Headache pain in  
stomachic region of  
some one were pressing  
squeezing the os  
-sphenoid also. Try  
the above Recipe to  
let of come back.

Derangement of menses  
is one of the principal  
causes of insanity in  
women It is inquired into  
1/3 of a woman's life is  
spent in such a  
-deranged by derangement of  
menses.

Caused by wearing great  
many petticoats all tied  
around waist by tapes  
9 out of every 10 girls  
are now suffering from  
retention affecting of  
which the majority  
of displacement of  
uterus. Constant fullness  
of bladder also an  
prominent cause of  
displacement of uterus.

Women only examining  
bladder twice a day. A  
woman who allows  
herself to become habitually  
constipated, will make  
her uterus to be forced  
forwards, from faces  
being there & hardened  
the uterine ligaments  
losing their contractility  
that when prepared to  
off, uterus lies down  
front go back to its  
former position

Why are Dover's Powders  
given at night?

How does honey act as an  
antidote of crocin euble-  
-mate?

Yellow oxide

Full dose of Sydenhams Anti-  
-monial Powder is grs. 3  
every 3 hours, & take little food.

Effects are

- 1 Reduction of pulse
- 2 Equalizing circulation
- 3 restoring eliminatory functions,  
bringing about an artificial  
crisis & thus abating a dis-  
-ease which wd be protra-  
-cted through out. Antimony  
will reduce pulse to 60.

As that respect is allied to  
Digitalis, Nitrat. Potas.  
Yellow Ipecacuanha, & Veratrum  
Viride. All these remedies  
will lower pulse

This combined with Morphine  
relaxes system & allows  
Morphine to act, which  
is by itself in fever aggra-  
-vates fever & prevents sleep.

This gives rest during  
night & prepares for  
Zincine, which use in  
2 gr pills with 1/20 gr  
of Morphine.

℞. Sulph. Zincine grs. xij

— Morphine grs. 1/8

St. Pil. No. viij

S. one every hour from

1. P. M.

℞. Sydenhams Antimonial Pills

grs. xii

St. Chart. ℞

S. one every 3 hours. last

one for night with 1/6 Morphine  
which will act as above.

Cure of Dr. S., suffering  
from Influenza Epidemica  
Fever.

This was suggested by the  
Morphine



3 Forms of Antimony

1 James's Powder

2 Tartar Emetic

3. Tyson's Antimonial Pulvis

As regards 1st. The emetic

Sometimes inefficient

Sometimes very rough,

unsteady action. Note regard

to No. 2. Neon selected.

Dr. Geo. Fordyce bro't it

into use as a febrifuge

Difficuly. Can't be well

used in pronounced habits,

or when habit is to ultra

mine habits. Not applicable

as it is liable to do some

thing, Acts as an irritant

on mucous membranes,

before it acts as a sedative.

Now question is how to,

give Antimony, to bring

out good & avoid bad

effects. Fellow of the

does this seem evident

uncertainty or anything as

above & yet decidedly

febrifuge. Combined with

Nuxphala, secures fit to

act & give patient sleep,

to wake up & get fallows

Individual to be nated

at 12 P.M. & give Serenine

& Nuxphala.

Two doctrines, one asserting

that fever comes from

local irritant. other that

there is a poison effecting

whole system associated

with local congestion.

Essential fever is the

latter.

Query? when is a profeinal

period in the latter?

From 1 P.M. to 10 <sup>morning</sup>

Evening which give <sup>morning</sup>

Then expectation, till

4 P.M. give Tyson's.

Then end expectation, give

Tyson's & Nuxphala



Yes. This is Vernal Intermittent  
of my mind. I can't see  
how miasm can form in  
Spring. No vegetable matter  
to decompose. Because this  
miasm

Douglas powder is given  
at night on top of diaphoresis,  
being more proach cold during  
night.

Cream of Tartar given  
in Irritability of papaya  
of urethra, when urine  
is acid, because in doing  
so, it is changed to Bicarb.  
of Potash, & thus renders  
the urine alkaline &  
thus always irritates

Monday  
Sept. 19. 1859

Martha Fullerton  
Oct 30, Married,  
one child, 13 Weeks.  
Complains of measles  
1st. Then a severe cold,  
then heat, <sup>then</sup> sweat. Had  
it last Thursday. Had  
a chill on Friday, A.M.  
Then on Sunday P.M.  
This morning a severe  
sweat. Drinks water  
great deal, but sick at  
stomach, can't eat, feels  
like throwing up. Then  
addicted to chills of even  
low & yellow stuff thrown  
off. First on Sunday, felt  
dizzy, very sore on side  
region of liver & spleen.  
Very weak, shade, & feel  
very cold, when asleep  
& when sweating, felt  
better. On Friday, A.M.  
on Sunday P.M. came

fever on all night,  
 this a.m. took  
 great sweating, feels  
 better now although  
 weak. Tongue furred.  
 Always has a sick  
 stomach & nothing to  
 throw up. Intermittent  
 Pulse, 90. Head gets  
 slightly lido dropping  
 over.

R. Hydrarg. Chlor. mit. grvj  
 S. Take this at night.  
 then a.m. commences  
 work.

R. Cinchonae Sulph.  
 Extr. Vitae 2. S. 3 ~~gr~~ xxxij  
 Aqua 3 1/2 ℥  
 teaspoonful  
 S. Take ~~2~~ every hour  
 from 6 a.m. to 6 p.m.  
 16 teaspoonful in 1/3

After 6 P.M. Take one every  
 2 hours.

Taylor,  
 Gonorrhoea, Paraphimosis  
 Chordee

Had it 3 weeks. About  
 9 or 10 days after attack  
 course. Commenced  
 burning itching

Infect with Fungus  
 10 grs to 1 3/4 dr. of V. de  
 Acid. And Zoffes  
 prescription.

If has Chordee  
 much, saturated  
 Laudanum & water  
 applied at night.

Empyema on  
 shoulder & arm.  
 slightly suppurative  
 was thought, but not so.  
 Symp. Bassap, Comp  
 getting well. Has had  
 suppurative, but has  
 undergone treatment

Michael Stake.

Swelling in groin  
Had it 2 weeks. Had  
no <sup>appeared</sup> change. Had  
swelling in passing  
urine. Had it  $\frac{1}{2}$  week.  $\frac{1}{2}$  p.  
Had intercourse Saturday  
before. No Pain is shown  
on intercourse. Appearance  
of pus in urethra. No  
numbing, any more than  
now. Has now concealed  
chancres.

R. Hydrarg. Protiodi gr. iij.  
S. ℥ss. 3 times daily.

Rub with R. <sup>times</sup> 2 a day

Ung. Hydrarg.

Diet. Be careful about  
exposing to heat & cold.  
No stimulants, coffee  
alcoholic drinks.

James Lov. 23.

Had intercourse  
last Friday, 2 weeks.  
Felt it yesterday A.M.  
Discharge commenced  
yesterday. Gonorrhoea.  
strict diet. & Boof's  
Prescription. as case of  
Taylor.

Had a swelling like  
gravel. No discharge.  
Can't pass water without  
straining. Had the  
Gonrr. 18 mos. ago, when  
it stopped. Took no  
inspection. Pass  $\frac{1}{2}$  tea-  
cup full of water three  
a day. No burning  
doing it. Unwieldy  
occupations. Pain in  
back when he lies  
down & get up, & lies  
on back only. Heavy  
dull pain.

great swelling in  
abdomen, as an ascending  
R. Potap. Iodid  $\mathfrak{z}\text{ij}$   
3 times a day.  $\mathfrak{z}\text{ij}$   
Very temperate.

Drinks grow once a day  
generally. Tendency  
to awasarcha.

Jos. Smith

Case of Chancre.

Ulcers far better.

Tasting

18 grs of Iodid. Potap  
to aqua  $\mathfrak{z}\text{j}$ . 3 times  
a day. Ulcers grow  
with Hydrarg. Ung.

strict diet.

Increase it to  $19\frac{1}{2}$  a  
day. ~~Cocaine~~  
Thursday.

San Univ a powder as  
a stimulant

R. Hydrarg. Chlor. nit

Oliz. Ford.

Burning in feet,  
Ronchus indicating  
clarity at both upper  
parts of both lungs.

Cold sweats.  
At night, hectic  
flush

R. Renum Moschid

S. Tablespoonful

every 4 hours after  
meals

Woo Sharr,  
burns on hand & fingers  
burns. Take

some soot from  
chimney & mix in  
lard until lard is  
perfectly black & keep  
it there. Soot, especially  
wood, is good on a/c of  
the creosote in it,  
which has antiseptic  
powers.

Bronch not regular  
also gums little  
suffering from use  
of Calmell.

R<sup>y</sup>. Ess. Colocynthis Comp.  
℞. xij  
Podophyllum gr<sup>ij</sup>  
℞. iij  
St. Pill. No. 6.

S. Take one 3 times  
daily.

R<sup>y</sup>. Tinc. Myrrh  
Wash mouth out  
with this twice daily.

Anna Dempsey Age 7<sup>th</sup>  
Pulse

Ronchus in inspiration  
Whooping Cough

Cracks of <sup>3 or 4</sup> ~~3 or 4~~  
abortion

Convulsions, efforts  
to expel, which are weak,  
thrown into convulsions in  
the efforts. While there is an  
long made and air  
goes in & there is an  
asphyxial nature  
causes the violent inspi-  
ration & causes the  
whooping, which is a  
symptom of convalescence.  
There is an instance  
where inspiration is  
Rondus, some trouble  
by which air is not let out  
which will bring on a  
state of carbonization  
in blood.

whether thinks that  
child has swallowed  
watermelon seed,  
Had it 9 days, but  
it has taxwered, &  
I am disposed to  
think there is no sign of

Whooping cough  
Can we tell Whooping  
cough, before convulsion  
has appeared.

R. Soda Bicarb.  $\mathfrak{z}\text{j}$   
Antimony Vinif.  $\mathfrak{z}\text{ss}$   
Ext Belladonna  $\mathfrak{gr}\text{ij}$   
~~Op. acacia  $\mathfrak{gr}\text{ij}$~~   
Simple Syrup.  $\mathfrak{z}\text{ss}$   
Mentha aqua  $\mathfrak{z}\text{ss}$   
~~R. Aqua Sissii  $\mathfrak{z}\text{ij}$~~   
to make  $\mathfrak{z}\text{ij}$

$\mathfrak{z}\text{ij}$  every 2 hours  
at a tea spoonful.

1st may sickness child  
but or much better

It was a <sup>cough</sup>

Whether whooping was a  
pneumonia or nervous  
disease. It is a  
fever, with local affection.  
Neither are reflexive.

Not a nervous affection

It is a convulsion.

Under epileptic convulsion  
brain is involved.

Lonic may involve  
all muscles in body.  
In ~~effort~~ <sup>spasmodic</sup> ~~effort~~ also.

There are 2 actions in  
effortizations, <sup>toracity</sup> ~~long~~  
pulmonary. Whooping  
cough is a convulsive  
condition of pulmonary  
system. Not affection  
of the <sup>10</sup> ~~gag~~ <sup>nerve</sup>  
in the <sup>10</sup> ~~gag~~ <sup>system</sup>  
system. In healthy  
condition, it is a alone

In pertussis, effort  
effort effort, & then there  
is a dilatation, which fills  
the



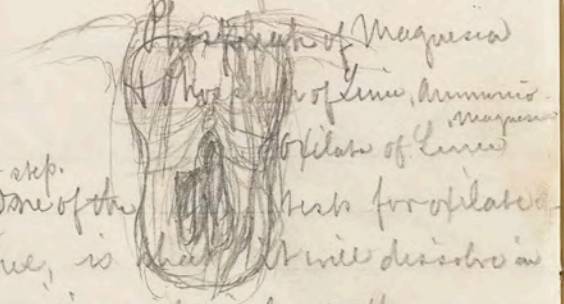


# Case of Caroline

If there is a feeble uterine,  
 there is a danger. That is the  
 analysis of pertussis, but  
 it goes through 4 weeks <sup>locally</sup> to visit this woman & make  
 fever, thus masking & obscuring a diagnosis.  
 before 1st after. Fever  
 associated with the local  
 trouble.

Was called by Dr. Knick,  
 to visit this woman & make  
 a diagnosis.

now, 2ndly, to find out of what  
 the inorganic matter consists of:  
 phosphate of lime & ammonia



1st step.  
 One of the <sup>best</sup> tests for phosphate  
 of lime, is that it will dissolve in

## Of tests of Lime Calculus thought to be

1st test. Find out if organic or inorganic  
 organic, i.e. whether it is com-  
 posed of <sup>substance</sup> ~~substance~~ <sup>substance</sup> ~~substance~~ <sup>substance</sup> ~~substance~~  
 by high heat or not. if the  
 former, it is organic. May be  
 partially inorganic & organic  
 this one, on this test, is enough  
 in which case, & all the organic  
 matter is driven off, thus showing  
 that it is mostly inorganic  
 kind another one, & it may be  
 driven off, thus showing to be  
 inorganic.

humic acid without effervescence  
 before heating, which this does, showing that  
 carbonic acid, & also that with the following  
 step, showing, it is not a phosphate  
 phosphate of lime will dissolve the same  
 way as the above, since not effervescent  
 heating it, but phosphate of lime will  
 effervesce on heating it, caused by  
 driving off carbonic oxide forming  
 carbonate of lime.

This effervesces after heating, & put  
 ting nitric acid in it.  
 next step is to make some of the powder  
 & subject to heat, & put reddened lit-  
 mus paper to it, the blue color of  
 the paper will be restored, thus  
 showing that it is an alkali, & Carbonic  
 lime.

Differential Diagnosis  
between

1. Ovarian Cysts or Dropsy
2. Ascites & Cancer of the Ovary
3. Cancer of the abdominal organs, producing nodular elevations in the iliac region, associated with Ascites.

1. Ovarian Cysts.  
Symptoms.

1. Age. Ovarian Dropsy has never been known to occur before age of puberty & seldom after period of child bearing has ceased. (Watson)
2. Appearance. Breadth of part not altered, no matter how patient lies. (Watson)
3. Percussion. On Percussion, sound is dull over tumour, which always occupies same situation, while a resonant sound is heard on the back of abdomen. (Wood & Watson)
4. Pressure. On Pressing vertically with tips of the fingers, a sensation of displacement of liquid & of impingement into a solid substance is felt. (Watson)
5. Pain. Tumour is generally in early stages, painless. (Watson)

6. Constitutionally, Appetite, not much impaired, voices  
not scanty, skin, not dry, No peculiar thirst,  
No peculiar emaciation. (Wood).

7. When tumour, is multicellular, small nodules are felt  
on careful examination, over the surface. (Watson)

8. In later stages, generally accompanied with Adema  
of lower extremities, caused by impeded circulation.  
(Wood)

9. Menstrues generally wanting, irregular, as the tumour  
may involve one or both sides (Wood & Watson)

This was called Mulberry  
cancer 30 years ago.

15, full of energy.  
Man was attacked  
with violent pain in side.  
It was considered by Dr Housh  
a kidney complaint. It was  
considered. Was pinched. 15  
years after that, had another  
attack. It occurred 6 weeks  
ago, he was affected same way,  
after being in salar suit &  
was worried, had the liver disorder.  
Think it a psychological effect.

He is constantly up at all  
times for soap water. There is a  
continual wish to pass water. Passes  
2 quarts or more a day.

System is much lower down  
when opalates are formed than when  
urates are formed.

Relieve the mental anxiety  
of the man, attend to diet.

Sept. 24th 1859

Dr. Spooner  
Wash good for  
Photophobia, to be  
applied 6 times  
a day. A Teaspoonful  
in a table spoonful of  
water. <sup>Apud barbae aqua</sup> <sup>Herb. Linn.</sup> <sup>grineo</sup>

Aqua f. 3j  
Cor. Sublim. grs  
Muri. Ammon. gr iij  
Opia. Vir. ℥ss

Applied in a case  
of Adrenal Ophthalmia  
& Trichiasis

Ellen M. Laughlin

Apply same in  
same way.

Also taking Recam. Vescentia

R. Cit. Jer. & Gum. gossyp  
℥ss  
℥ss

one 3 times a day  
or more before meals  
Appetite good.

Jeff.

Sept. 24 1889

Rh. <sup>Rheumatism</sup>  
Morphine sulph. gr. ʒi.  
Vin. Colchica ʒi.  
Veratrum Vin. ʒi. ss.

To be given every night

Take a bottle of alcohol  
foam every day &  
nutritious diet

### Case of Valgus

Young child in resting  
foot on floor, turns outer  
margin upwards forms  
a hollow of sole of foot.  
Caused by shadow of the  
perineal muscle behind  
below the external meatus.  
Cut that <sup>subcutaneously</sup> spot on clubfoot  
apparatus

Dyspepsia, low throat &  
Tonsillitis  
Beer fasting Blue Malt  
Lilph. Ferris Rinse  
small portion of bread &  
then apply Nitro-glycerin.  
Continue treatment as  
before

ʒi. Pil. Hydrarg.  
ʒi. Lilph.



a. red, inflamed  
surface  
b. ulcer.

had it for great  
Pains. <sup>at night</sup>  
Man with ulcer as above.  
Bandage tightly about part above  
the knee, pressure in rapid motion  
then scarify superficially.  
Centrose ulcer with ant. <sup>acid</sup>  
dissolved. Then apply <sup>acid</sup> suppur. <sup>acid</sup>  
Poultice, warm. Then apply <sup>acid</sup>  
as healthy apply <sup>acid</sup> <sup>acid</sup>

Sept. 25<sup>th</sup> 1859 Dr Parrot

Martha Fullerton,

Feels very weak.

Has not had an attack of Intermittent  
since Sunday. Combined <sup>and acute</sup> ~~Intermittent~~ <sup>febrile</sup> ~~Intermittent~~  
<sup>continued with</sup> Gastric Influenza. Intermittent gone.

Now Gastric Influenza is in force.

R. & V. Veronica gr

H. Pil. No. 5.

S. Give ocean <sup>after</sup> ~~hour~~ <sup>each</sup> meal

It has an effect on the peristaltic or  
churning muscular action of stomach

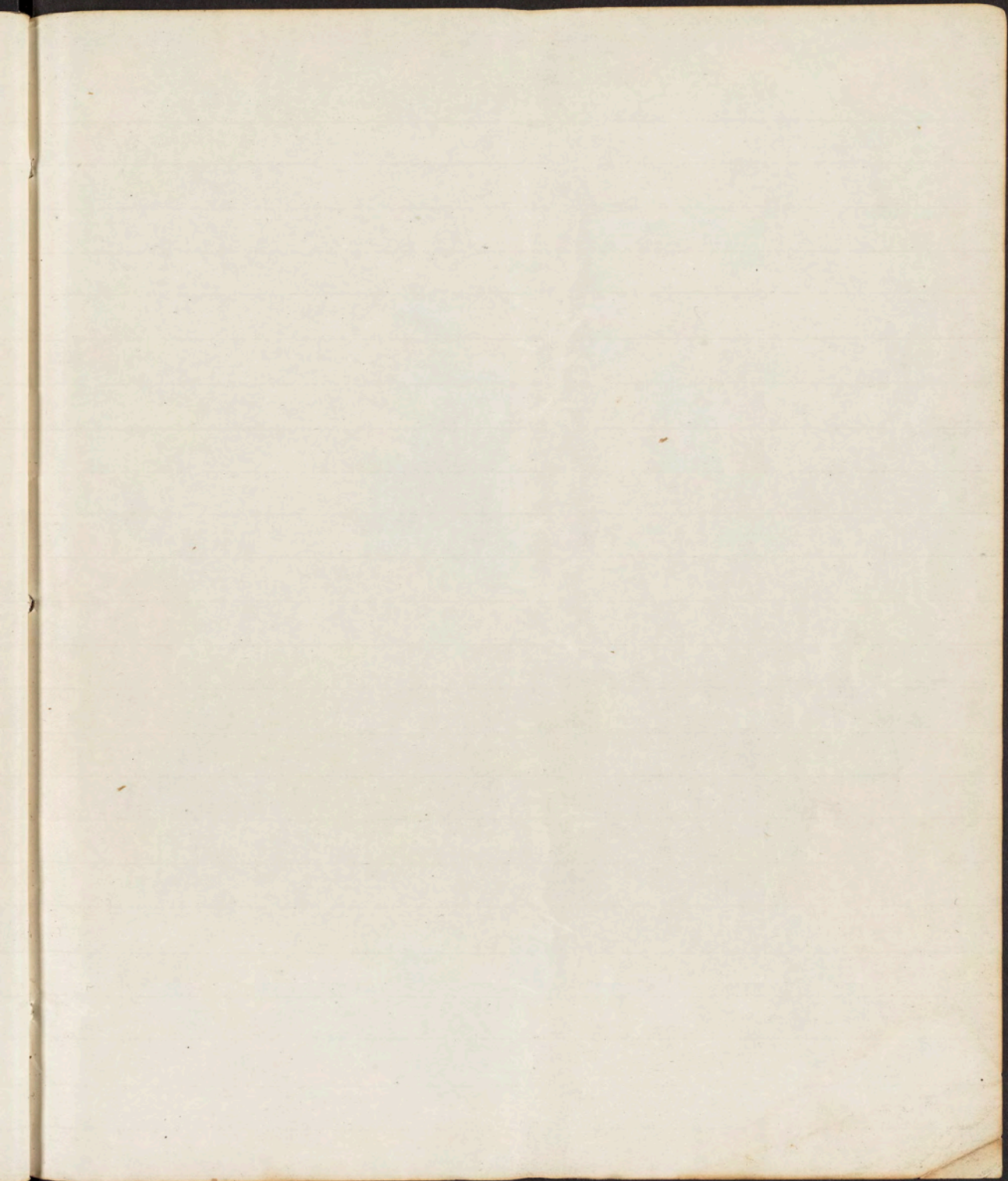
<sup>here last Tuesday,</sup>  
Anna & George, Jr. Complained of  
cough & mucus when here before, but thought  
it was a Whooping Cough, for which remedies  
were directed. Pulse better, rales in  
lungs better, tongue clean.

Same Treatment

Coughed a great deal last night.

Catarrhs. Catarrhs of Intermittent  
enclined with another disease.







the Sunday. Diarrhoea. 7 weeks. 1887  
 The hands in the morning, a first that  
 has been Diarrhoea, is a good sign,  
 not only from use of meat +  
 nitrogenous food.

Prescribed for his pajama  
 3 Pints of urine, sp. 1015. Because  
 there is either want of, or a dis-  
 integration of blood corpuscles.  
 See by conjunctiva, whether  
 there are atrophic blood corpus-  
 cles, which is so in him. On  
 this a/c, give Iron.

Dr. Ferris Carb. gr. iij  
 2x2; Take this every day.  
 Use grain powders for  
 hour after meals.

Also taking  
 Dr. Cartwright's water.

Rheumatism is the  
 collection of Lactic Acid  
 Gout, of uric acid.  
 Acetate of Potash good.

Sept. 27th 1899  
 Dr. Parrack

Mrs. Henderson  
 Astbo. Psoriasis Palmaris  
 Hand much better. to follow  
 appearance.



a - well  
 b - well  
 c. all, except the  
 back, where there  
 is a little more +  
 surfaced  
 d. redder + more  
 swollen.  
 e - swollen  
 ends, all around  
 further than last  
 time

a = surfaced + inflamed

In this case, the disease  
 has left the palm + has  
 attacked the fingers,  
 except Index. The disease  
 also assumed another  
 mode, consisting now  
 in the fingers + fingers  
 of scurf, + some edema,

Jimmy has said that under the  
 as the symptoms of the burning pain  
 nails the long fingers, as much as  
 proved, the disease has also extended  
 to the ring finger, but the little finger  
 is much swollen + it turns more when  
 fingers are sore they turn + when they  
 get some better they take 4 times a day  
 Dr. Ferris Carb. Solution  
 2. 1/2 oz. 5 drops as a tea

Cancer of abdominal organs, producing  
nodular elevations in the Iliac Region, associated  
with ascites.

### Diagnostic signs.

Millium Tu

Ben. sized 2 weeks. Has

had Intermittent (Tertian) every  
other day, first at 12 M. other two  
days, early in morning. Has  
had 3 chills, 2 or 3, then  
chills, get black & purple.

No purulent matter can be stopped  
with less than 10 grains.

R. Quin. Sulph. gr x ij

Tannic Acid grj

Syrup. Limon. ℥ij

Aqua Mentha ℥ij

10 doses

S. Take a dose every 2 hours.

Murm with Intermittent

Sulph. Quinid II

Ol. Nig. Piperis ℥ij

Ext. Sertuenerii gr x

℥. 10 Pil.

S. Take one every 3 hours

Get it 10th March

10

$$\frac{1}{2} + \frac{1}{4} + 1 + 1 = 1\frac{3}{4}$$

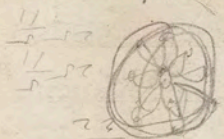
$$4 + 2 + 8 + 8 = 560$$

$$\frac{11}{4} \cdot 9 = \frac{11}{4} \cdot \frac{11}{2} = \frac{121}{8} = 15.125$$

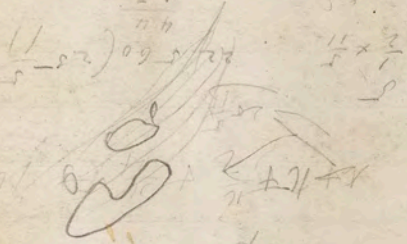
$$\frac{11}{5} \cdot 5 = 11$$

$$\frac{11}{4} \cdot \frac{11}{2} = \frac{121}{8} = 15.125$$

$$\frac{11}{5} \cdot 5 = 11$$



$$\frac{11}{5} \cdot 5 = 11$$



$$2 \cdot 2 = 4$$

$$2 \cdot 2 + 4 + 4 + 4 + 4 = 20$$

$$2 \cdot 2 + 4 + 4 + 4 + 4 = 20$$

$$1 + 1 + \frac{2}{4} + \frac{2}{4} = 2$$

Differential diagnosis between Ovarian Cysts, Ascites, & Cancer of the Ovary, or Cancer of the abdominal organs, producing nodular enlargement in the iliac region associated with Ascites.

to age as a sign.

See Nature & Treatment of Cancer by Walsh.





