

See discussions, stats, and author profiles for this publication at: <https://www.researchgate.net/publication/284003874>

Genetic Analyses of Some Central Anatolian Domestic Duck Populations with Inter Simple Sequence Repeat (ISSR): A Preliminary Study

Article in *Pakistan journal of zoology* · January 2015

CITATION

1

READS

249

3 authors, including:



Rahsan I. Tunca

Muğla University

31 PUBLICATIONS 96 CITATIONS

SEE PROFILE



Atilla Taşkin

Ahi Evran Üniversitesi

44 PUBLICATIONS 41 CITATIONS

SEE PROFILE

Some of the authors of this publication are also working on these related projects:



Project

COLOSS monitoring of honey bee colony losses [View project](#)

Genetic Analyses of Some Central Anatolian Domestic Duck Populations with Inter Simple Sequence Repeat (ISSR): A Preliminary Study

Rahsan Ivgin Tunca,^{1*} Atilla Taskin² and Mithat Buyuk²

¹Department of Animal and Plant Breeding, Ula Ali Kocman Vocational School, Mugla Sitki Kocman University, Mugla, Turkey

²Department of Animal Science, Ahi Evran University, 40100 Kirsehir, Turkey

Abstract.- The aim of this study is to investigate the genetic structure of some domestic duck populations from Kirsehir and Yozgat provinces of the Central Anatolia region of Turkey. Blood samples were obtained from the *venae cutenea ulnaris* of 76 ducks from four different locations. Eleven ISSR primers produced 73 reproducible and bright bands. The number of polymorphic loci was 72 and the percentage of polymorphic loci was 98.6%. Gene diversity (H_T) in total population and magnitude of differentiation among populations (G_{ST}) were 0.198 and 0.183, respectively. The genetic distances between regions under investigation were found among 0.0157 and 0.0991. Analysis of molecular variance (AMOVA) reflected that 83% of within variation and 17% among population variation. First three given values of principle coordinate analysis explained 69.8% of total variation as 45.6, 13.8 and 10.4%, respectively. The dendrogram showed two main branches: one contains Kirsehir (L1, L2, L3), the other includes Yozgat region (L4). Shannon's Information index (I) value was 0.331. The gene flow (N_m) among populations was analyzed and N_m value was estimated as 2.23 with the low level of differentiation among populations. The results indicated that genetic variations of some Central Anatolian domestic duck populations are determined using ISSR marker and might provide information for future breeding strategies.

Keywords: Duck population, genetic distance, ISSR primers.

INTRODUCTION

Ducks, one of the avian species, have economic, social and ecological value in far eastern countries, particularly in China, Vietnam, Malaysia, Indonesia etc. However; some European countries like France, Romania, Poland, and Ukraine are also rearing ducks (FAO, 2015). China is the leader of duck rearing (816,500,000) in the world. Goose and ducks meat including total poultry meat production of the world contain 7.2 %. Commercial production mostly involves liver production (Pingel, 2004).

In Turkey, the production level of domestic duck populations is approximately 357.000 according to FAO data (2015). However, the production levels of broiler and hen were very higher compared with the levels of other poultry production in Turkey (Table I). Unfortunately, there is no genetic information regarding domestic

Table I.- Poultry and egg production, 2010-2012 (TurkStat, Turkey in Statistics, 2012).

Poultry and egg production (Thousand number)	2010	2011	2012
Duck	397	382	357
Turkey	2,942	2,563	2,761
Goose	716	680	676
Hen	234,918	237,873	253,712
Broiler	63,985	158,917	169,034
Laying hen	70,934	78,957	84,677
No. of hen eggs	11,840,396	12,954,686	14,910,774

Note. Egg production in villages is excluded starting from 2010.

duck populations in Turkey. The possible explanation could be Avian Influenza. Because, during the years 2005-2008, a total of 2.5 million poultry were sacrificed and there was lack of information about how many ducks, goose or hens were sacrificed, respectively (www.tarim.gov.tr)

Authors' Contributions: RIT and MB performed the experiment work. AT collected blood samples and other statistical data. RIT designed the experiment and wrote the manuscript.

* Corresponding author rivgin@gmail.com
0030-9923/2015/0006-1709 \$ 8.00/0
Copyright 2015 Zoological Society of Pakistan

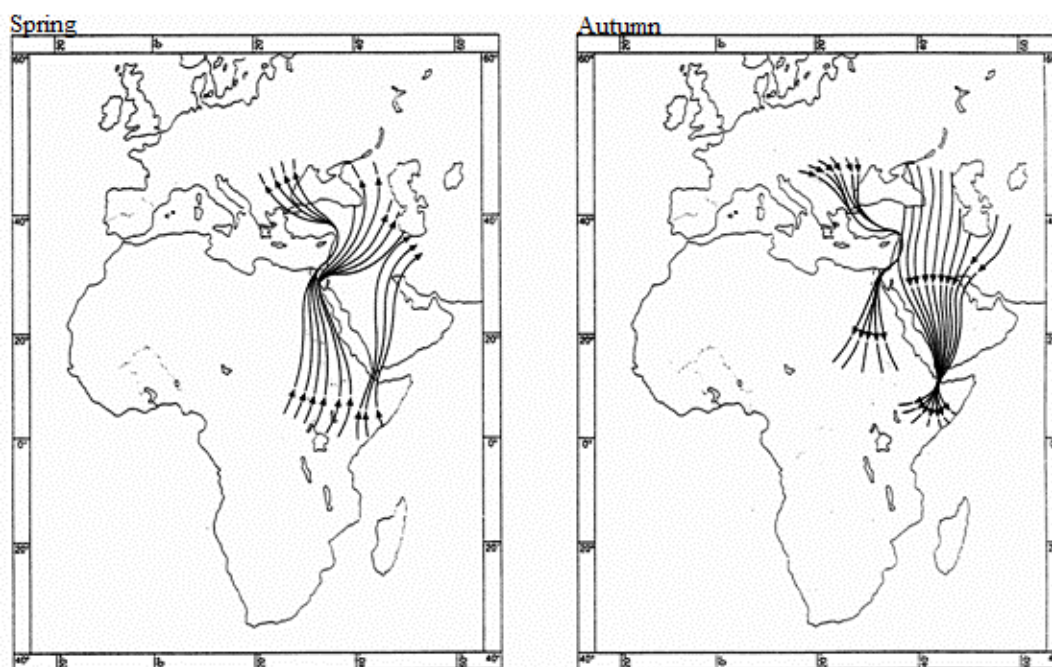


Fig. 1. Migration routes for waterfowl in Turkey in spring and autumn periods. (<http://kaced.org/trbiyolojikcesitlilik.php>)

Table II.- The number of scarified poultry and affected provinces in Turkey.

Years	The provinces affected by the disease	The number of sacrificed poultry
2005-2006	54	2.500000
2007	2	27.190
2008	5	7.477

(Table II). In the Western European countries such as Germany and France, it has been reported that the number of animals sacrificed poultry has reached to 10 million (Sarnic, 2006).

Rather than genetic studies especially in duck populations in Turkey, several investigators generally prefer to study on breeding or feeding studies (Sari *et al.*, 2013; Demir *et al.*, 2010; Erisir *et al.*, 2009; Alpay, 2008; Arslan *et al.*, 2003; Isguzar, 2006; Isguzar and Testik, 1999). In recent times, many studies have been documented about distributions and breeding regions of waterfowls especially white headed duck in Turkey (Nergiz *et al.*, 2014; Perktas *et al.*, 2006; Munˆoz-Fuentes *et*

al., 2005; Kirwan, 1994; Green *et al.*, 1996). Hence, Turkey is a key point for waterfowls from their migration routes (Fig. 1). During spring and autumn period millions of waterfowl located in wetlands in Turkey. Also endangered species like white headed duck locate in these regions during their migration period (Li and Mundkur, 2003; Munˆoz-Fuentes *et al.*, 2005).

In the world, knowledge of genetic variation of duck was obtained by different molecular methods such as Random Amplified Polymorphic DNA (Su *et al.*, 2006), microsatellite (Hui-Fang *et al.*, 2010; Su and Chen, 2009; Su *et al.*, 2007) and mitochondrial DNA (Munˆoz-Fuentes *et al.*, 2005) whereas there are no documentations for duck populations using Inter-simple sequence repeat (ISSR). The ISSR based on PCR technique is implemented to determine variation from the regions between microsatellites. ISSR is a fast, efficient and inexpensive is a molecular technique and it is widely used in the determination genetic relatedness among populations in many organisms (Zietkiewicz *et al.*, 1994). It is no need to use of radioactivity. It is reliable and includes more

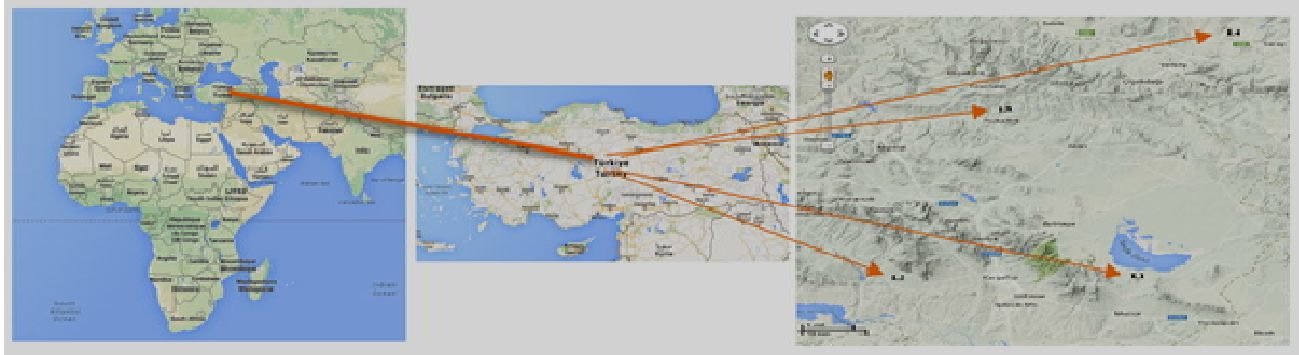


Fig. 2. Samples collected regions (Dulkadirli (39°50'N-34°14'E), Seyfe Lake region (39°14'N-34°45'E), Hirfanlı Dam region (39°73'N-34°63'E) in Kirsehir and Saray (39°19'N-33°63'E) in Yozgat).

information than other dominant molecular techniques using single arbitrary primers (Gradzielewska, 2011). ISSR have also been used for gene mapping, population genetic studies, identification of breed of species (Bornet and Branchard, 2001).

In literature, knowledge on the identification of genetic variations using ISSR in the Central Anatolian duck populations has not yet been documented. Herewith, the aim of this study is to investigate the genetic structure of some domestic duck populations in Kirsehir and Yozgat provinces of the Central Anatolia in Turkey. This study is the first report including molecular analysis for determination of genetic diversity of domestic duck population in Turkey.

MATERIALS AND METHODS

Blood samples were obtained from the *venae cutenea ulnaris* of 76 ducks from four different locations in Central Anatolia (Dulkadirli (39°50'N-34°14'E), Seyfe Lake region (39°14'N-34°45'E), Hirfanlı Dam region (39°73'N-34°63'E) in Kirsehir and Saray (39°19'N-33°63'E) in Yozgat) (Fig. 2). Eleven primers were given in Table III. Genomic DNAs were isolated from blood samples as described by Dunnington *et al.* (1990). PCR mixture were composed of 200um dNTPs, 0,2um primer, 20ng DNA, 2U taq DNA polymerase, 1X Taq Buffer in 25 µl total reaction volume. Amplifications were performed as followed programs 3 min at 94°C (1 Cycle), followed by 1 min 94°C, 45 sec 50-56°C, and 2 min 72°C (35

cycle), followed by final extension at 72°C for 5 min. Amplification products were resolved by electrophoresis in 1.2% agarose gel with 0.8 X TBE buffer. After electrophoresis, gels were stained with ethidium bromide solution (10 m/l ml) and visualized under UV (Fig. 3).

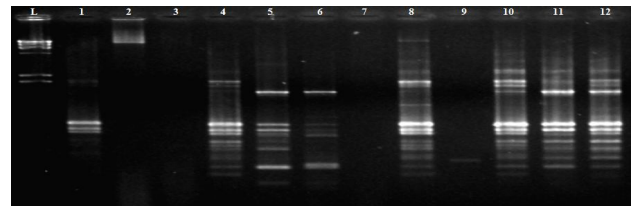


Fig. 3. PCR results for (AC)₈GA ISSR primers (Line 1: DNA Ladder; Line 2-13: DNA Samples).

Table III.- Primer sequences, annealing temperatures and number of bands per primer.

Primers	Annealing temperature (°C)	# of bands per primer
(CA) ₈ G	50	6
(AG) ₈ G	55	5
(AC) ₈ GA	54	11
(AC) ₈ CA	54	4
(GA) ₈ GG	56	5
(GGGGT) ₃ G	55	5
(GA) ₈ CC	54	6
(TG) ₈ A	54	6
(CT) ₈ GC	54	10
(CAG) ₅	54	9
(CA) ₈ AGC	55	8

Polymorphic and monomorphic bands were scored for ISSR. Percent of polymorphic bands,

gene diversity (Nei, 1973), Nei's (1978) genetic distance and genetic identity were estimated in populations. Shannon's information index (I) (Lewontin, 1972) is used for measuring species diversity in ecology studies whereas it also estimates genetic variability in genetic studies. Therefore, genetic variability of this study was estimated using Shannon's information index. The coefficients of gene differentiation (G_{ST}), and gene flow (Nm) were calculated using POPGENE 1.31 software (Yeh *et al.*, 1999). Analysis of Molecular Variance (AMOVA) and Principle Coordinate Analyses (PCA) were done using Genalex6 software program (Peakall and Smouse, 2006). UPGMA tree was performed based on Nei's (1978) genetic distance using NTSYSpc V2.20e (Rohlf, 2000).

RESULTS

Eleven ISSR primers produced 73 reproducible and bright bands. All bands were polymorphic when all populations were evaluated. The number of polymorphic loci was 72 and the percentage of polymorphic loci was 98.63%. The effective number of alleles (N_e) was estimated as 1.26. Gene diversity (H_T) according to Nei's (1973) and Shannon's information index (I) values were calculated as 0.198 and 0.331, respectively. Mean diversity within subpopulation (H_S), total genetic diversity in the all populations (H_T), and magnitude of differentiation among populations (G_{ST}) values were given in Table IV. G_{ST} value was 0.183 and this value indicated that there was relatively low level of genetic differentiation among populations. The gene flow among populations was analyzed and Nm value was estimated as 2.23 and the present result showed that low level of differentiations were found among populations.

Analysis of Molecular Variance (AMOVA) respected that the total genetic variation includes 83% within, 17% among populations. First three Eigen values of PCA explained 69.8% of total variation. First, second and three Eigen values were 45.6, 13.8 and 10.4%, respectively. According to Nei's (1978) genetic distance, L3 (samples collected from Dulkadirli in Kirsehir) and L4 (samples collected from Saray in Yozgat) were the most distant (0.0991), also L1 (Seyfe lake region) and L2

(close to Hirfanli Dam) were the least distant populations (0.0157) (Table V). Cluster analysis revealed two main branches, one leading to duck populations in Kirsehir, the other one including Yozgat region (Fig. 4).

Table IV.- Total genetic diversity in the all populations (H_T), mean diversity within subpopulation (H_S), coefficient of gene differentiation (G_{ST}), Gene flow (Nm) and Shannon's information index (I) values.

	Mean	St. Dev
N	76	
H_T	0.198	0.0206
H_S	0.156	0.0122
G_{ST}	0.183	
Nm^*	2.230	
I^*	0.331	0.1550

* I (Lewontin 1972); Nm = estimate of gene flow from G_{ST} (McDermott and McDonald, 1993).

Table V.- Genetic identity (above diagonal) and distance (below diagonal) values for studied populations (L1: Seyfe Lake region, L2: Hirfanlı Dam region, L3: Dulkadirli in Kirsehir and L4: Saray in Yozgat).

	L1	L2	L3	L4
L1	****	0.9844	0.9513	0.9654
L2	0.0157	****	0.9822	0.9462
L3	0.0500	0.0180	****	0.9057
L4	0.0353	0.0553	0.0991	****

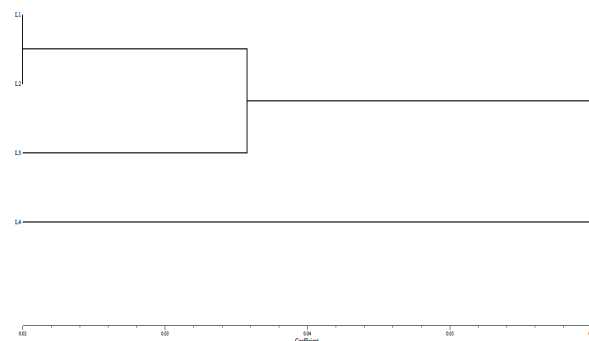


Fig. 4. Dendrogram Based Nei's (1978) Genetic distance using UPGMA method (L1: Seyfe Lake region, L2: Hirfanlı Dam region, L3: Dulkadirli in Kirsehir and L4: Saray in Yozgat).

DISCUSSION

Genetic diversities were determined by many studies in both wild and domestic duck populations for many countries such as China, Spain and USA etc. These studies were conducted on duck populations using Microsatellite, mtDNA, RAPD and AFLP markers (Munoz- Fuentes *et al.*, 2006; Su *et al.*, 2007; Su and Chen, 2009). In Turkey, the genetic information is still scarce about domestic duck populations, whereas the previous studies about domestic duck populations mostly contain feeding, management, and performance in Turkey. In these previous studies, cost benefit analyses of various housing systems, performance, carcass characteristics and different feeding systems were studied by some earlier investigators in different publications (Demir *et al.*, 2010; Erisir *et al.*, 2009; Isguzar, 2006).

Very little genetic information is known about the wild duck populations existing for Turkey. The study regarding the wild duck populations was carried out on endangered white-headed duck population (*Oxyura leucocephala*) in which genetic structure and genetic diversity were determined by using mtDNA for many countries including also Turkey (Munoz- Fuentes *et al.*, 2005). Two different haplotypes were genetically identified using mtDNA methods for wild white-headed duck populations for samples taken from Turkey (Munoz- Fuentes *et al.*, 2005). The distribution and breeding status of wild duck populations and other waterfowl species were generally determined for many lakes and marshes of Turkey (Nergiz *et al.*, 2014; Biricik and Karakas, 2011; Perktas *et al.*, 2006 Green *et al.*, 1996; Kirwan, 1994). One of these studies was performed in Seyfe Lake located in Kirsehir and the populations of waterfowls were informed such as shelduck, rudy shelduck and etc (Perktas *et al.*, 2006). This location overlaps in the present study and diversity of waterfowl species were informed in Seyfe Lake region.

The data represented here reveals that there is low level differentiation among the studied populations, and the present study is the first document for the determination of genetic inventory for domestic duck populations. In conclusion, genetic studies about wild and domestic duck

populations were relatively limited in Turkey. More studies are still needed to determine genetic inventory about duck populations both wild and domestic which are very important for gene sources of Turkey. The information about genetic relationships and detection of genetic inventory for duck populations has several important applications for its genetic improvement and breeding in Turkey for development of future breeding strategies.

ACKNOWLEDGEMENTS

A part of this study was presented in Balkan Agriculture Congress (8-11 September 2014, Edirne, Turkey).

Statement about conflict of interest

There is no conflict of interest among authors.

REFERENCES

- ALPAY, F., 2008. *Effect of hatching egg weight and length of storage period on hatching success, growth, slaughter and carcass characteristics in ducks*. Ph.D. thesis, University of Uludag, Bursa, Turkey.
- ARSLAN, C., CITIL, M. AND SAATCI, M., 2003. Effects of L-carnitine administration on growth performance, carcass traits, blood serum parameters and abdominal fatty acid composition of ducks. *Arch. Anim. Nutr.*, **57**: 381–388.
- BIRICIK, M. AND KARAKAS, R., 2011. On the occurrence of white-headed duck *Oxyura leucocephala* (Scopoli, 1769) in south-eastern Anatolia, Turkey. *Acta Zool. Bulg.*, **63**: 213-216.
- BORNET, B. AND BRANCHARD, M., 2001. Nonanchored inter simple sequence repeat (ISSR) markers: Reproducible and specific tools for genome fingerprinting. *Pl. Mol. Biol. Rep.*, **19**: 209-215.
- DEMIR, P., ERISIR, Z., POYRAZ, O., ONBASILAR, E.E. AND ERDEM, E., 2010. Cost-benefit analyses of pekin duck fattening according to various housing systems and slaughter age. *Kafkas Univ. Vet. Fak. Derg.*, **16**: 493- 496.
- DUNNINGTON, E.A., GAL, O., PLOTSKY, Y., HABERFELD, A., KIRK, T., GOLBERG, A., LAVI, U., CAHANER, A., SIEGEL, P.B. AND HILLEL, J., 1990. DNA fingerprints of chickens selected for high and low weight. *Anim. Genet.*, **21**: 221-231.
- ERISIR, Z., POYRAZ, O., ONBASILAR, E.E., ERDEM, E. AND OKSUZTEPE, G.A., 2009. Effects of housing system, swimming pool and slaughter age on duck

- performance, carcass and meat characteristics. *J. Anim. Vet. Adv.*, **8**: 1864–1869.
- FOOD AND AGRICULTURE ORGANIZATION OF THE UNITED NATIONS (FAO), 2015. Available source: <http://faostat.fao.org/site/573/default.aspx#ancor>
- GREEN, A.J., FOX, A.D., HILTON, G., HUGHES, B., YARAR, M. AND SALATHE, T., 1996. Threats to Burdur Lake ecosystem, Turkey and its waterbirds, particularly the white-headed duck *Oxyura leucocephala*. *Biol. Conserv.*, **76**: 241-252.
- GRADZIELEWSKA, A., 2011. Application of the ISSR method to estimate the genetic similarity of *Dasypyrum villosum* (L.) P. Candargy Greek populations to *Triticum* and *Secale* species. *Biodiv. Res. Conserv.*, **21**: 7-12.
- HUI-FANG, L., WEI-TAO, S., JING-TING, S., KUAN-WEI, C., WEN-QI, Z., WEI, H. AND WEN-JUAN, X., 2010. Genetic diversity and population structure of 10 chinese indigenous egg-type duck breeds assessed by microsatellite polymorphism. *J. Genet.*, **89**: 165-72.
- ISGUZAR, E., 2006. Effects of stocking density on growth and carcass traits of mixed local duck genotypes and Pekin Ducks in Isparta Region of Turkey. *Suleyman Demirel Univ. J. Nat. appl. Sci.*, **10**: 56–60 (Article in Turkish with an English Abstract).
- ISGUZAR, E. AND TESTIK, A., 1999. An investigation on local genotypes of waterfowl in Isparta Province of Turkey. Proceedings of 12th European Symposium on Waterfowl, pp. 51-56.
- KIRWAN, G.M., 1994. The breeding status and distribution of the white-headed duck *Oxyura Leucocephala* on the central plateau. Turkey, *Sandgrouse*, **16**: 66-73.
- LEWONTIN, R.C., 1972. Testing the theory of natural selection. *Nature*, **236**: 181-182.
- LI, Z.W.D. AND MUNDKUR, T., 2003. Status overview and recommendations for conservation of the whiteheaded duck *Oxyura leucocephala* in Central Asia. Wetlands International Global Series No. 15, Wetlands International, Kuala Lumpur, Malaysia.
- MUNOZ-FUENTES, V., GREEN, A.J., NEGRO, J.J. AND SORENSON, M.D., 2005. Population structure and loss of genetic diversity in the endangered white-headed duck, *Oxyura leucocephala*. *Conserv. Genet.*, **6**: 999-1015.
- NEI, M., 1973. Analysis of gene diversity in subdivided populations. *Proc. natl. Acad. Sci. USA*, **70**: 3321-3.
- NEI, M., 1978. Estimation of average heterozygosity and genetic distance from a small number of individuals. *Genetics*, **89**: 583-590.
- NERGIZ, H., TABUR, M.A. AND AYVAZ, Y., 2014. Population sizes and migration times of the White-headed Duck, *Oxyura leucocephala* (Scopoli, 1769), in Turkey Bitlis Eren Univ., *J. Sci. Technol.*, **4**: 20 – 22.
- PINGEL, H., 2004. Duck and geese production. *World Poult.*, **20**: 26-28.
- PEAKALL, R. AND SMOUSE, P.E., 2006. Genalex6: genetic analysis in excel. population genetic software for teaching and research. *Mol. Ecol.*, **6**: 288-295.
- PERKTAS, U., ALBAYRAK, A.B. AND AYAS, Z., 2006. The evaluation of some keywetlands for waterfowl in central Anatolia, Turkey. Waterbirds around the world, A global overview of the conservation, management and research of world's waterbird flyways. Edinburg, U.K: Stationery Office, pp. 366- 367.
- ROHLF, F.J., 2000. *NTSYS-pc numerical taxonomy and multivariate analysis system, version 2.20e*. Exeter Publication, New York.
- SARI, M., ONK, K., ISIK, S., TILKI, M. AND TUFAN, T., 2013. Effects of housing system, slaughter age, and sex on slaughter and carcass traits of native Turkish ducks. *Turk. J. Vet. Anim. Sci.*, **37**: 694-700.
- SARNIC, M., 2006. *The effects of avian influenza on the Turkish economy*. Available At: http://www.ekodialog.com/makaleler/kusgribi_ekonomi_ye_etkisi.html.
- SU, Y., LIU, C.W., LIU, L., YE, C.H., CAO, W.Q., HUANG, Y.Q., ZHENG, J. AND CAI, D.Y.O., 2006. Studies on genetic variation of different chinese duck populations with random amplified polymorphic DNA analysis. *Asian Austral. J. Anim. Sci.*, **19**: 475-481.
- SU, Y., LONG, R.J., CHEN, G.H., WU, X.S., XIE, K.Z. AND WAN, J.H., 2007. Genetic analysis of six endangered local duck populations in China based on microsatellite markers. *J. Genet. Genomics.*, **34**: 1010–1018.
- SU, Y. AND CHEN, G.H., 2009. DNA microsatellite analysis of genetic diversity amongchinese indigenous laying-type ducks. (*Anas Platyrhynchos*). *Czech J. Anim. Sci.*, **54**: 128–135.
- YEH, F.C., YANG, R.C., BOYLE, T., YE, Z.H. AND MAO, J.X., 1999. *POPGENE, the user-friendly shareware for population genetic analysis*. Molecular Biology and Biotechnology Center, University of Alberta, Edmonton, Alberta, Canada.
- ZIETKIEWICZ, E., RAFALSKI, A. AND LABUDA, D., 1994. Genome fingerprinting by simple sequence repeat (SSR)- anchored polymerase chain reaction amplification. *Genomics*, **20**:176–183.

(Received 29 April 2015, revised 2 August 2015)