



Screen for mitochondrial DNA copy number maintenance genes reveals essential role for ATP synthase

Atsushi Fukuoh^{1,2,3,†}, Giuseppe Cannino^{1,†}, Mike Gerards¹, Suzanne Buckley¹, Selena Kazancioglu¹, Filippo Scialo¹, Eero Lihavainen⁴, Andre Ribeiro⁴, Eric Dufour¹ & Howard T Jacobs^{1,5,*}

Abstract

The machinery of mitochondrial DNA (mtDNA) maintenance is only partially characterized and is of wide interest due to its involvement in disease. To identify novel components of this machinery, plus other cellular pathways required for mtDNA viability, we implemented a genome-wide RNAi screen in *Drosophila* S2 cells, assaying for loss of fluorescence of mtDNA nucleoids stained with the DNA-intercalating agent PicoGreen. In addition to previously characterized components of the mtDNA replication and transcription machineries, positives included many proteins of the cytosolic proteasome and ribosome (but not the mitoribosome), three proteins involved in vesicle transport, some other factors involved in mitochondrial biogenesis or nuclear gene expression, > 30 mainly uncharacterized proteins and most subunits of ATP synthase (but no other OXPHOS complex). ATP synthase knockdown precipitated a burst of mitochondrial ROS production, followed by copy number depletion involving increased mitochondrial turnover, not dependent on the canonical autophagy machinery. Our findings will inform future studies of the apparatus and regulation of mtDNA maintenance, and the role of mitochondrial bioenergetics and signaling in modulating mtDNA copy number.

Keywords complex V; DNA replication; mitochondrial biogenesis; mitochondrial DNA; mitophagy; nuclease; nucleoid; reactive oxygen species

Subject Categories Methods & Resources; Metabolism

DOI 10.15252/msb.20145117 | Received 12 January 2014 | Revised 2 May 2014 | Accepted 2 May 2014

Mol Syst Biol. (2014) **10**: 734

Introduction

Eukaryotes that use mitochondrial oxidative phosphorylation (OXPHOS) to generate ATP maintain a separate mitochondrial

genome (mtDNA), encoding a subset of OXPHOS protein subunits, together with some components of the machinery of intramitochondrial protein synthesis. The maintenance and expression of mtDNA is otherwise dependent on nuclear-coded gene products, constituting a separate apparatus for genome maintenance and gene expression within the cell (McKinney & Oliveira, 2013).

The core machinery of mtDNA replication is broadly conserved among eukaryotes. DNA replication is assumed to depend on the only DNA polymerase consistently found in mitochondria, DNA polymerase γ (PolG; Kaguni, 2004), a member of the family A DNA polymerases (Ito & Braithwaite, 1991). Its closest prokaryotic homologue is the phage T7 DNA polymerase, and it is assumed to function in concert with the mitochondrial helicase Twinkle (Spelbrink *et al.*, 2001), a homologue of phage T7 helicase-primase (gp4). Twinkle is absent from yeast, where other helicases are involved in mtDNA replication. Maintenance of mtDNA requires also mitochondrial transcription factors A (mt-TFA or TFAM), needed for mtDNA compaction and transcription (Larsson *et al.*, 1998; Kang & Hamasaki, 2005; Campbell *et al.*, 2012), and B (mt-TFB2, TFB2M; Matsushima *et al.*, 2004). Three other proteins are essential for mtDNA maintenance, namely mtSSB, the mitochondrial single-stranded DNA-binding protein (Maier *et al.*, 2001), RNase H1 (Cerritelli *et al.*, 2003), and, in some organisms, a second DNA polymerase, PrimPol, that additionally has primase activity (García-Gómez *et al.*, 2013). A number of other proteins are required to maintain normal mtDNA copy number or topology in different organisms (Contamine & Picard, 2000; Copeland, 2012). These include the DNA-binding AAA protein ATAD3A (He *et al.*, 2007), some enzymes of nucleotide metabolism and transport (Saada, 2004), proteins with roles in mitochondrial membrane dynamics (Jones & Fangman, 1992; Wong *et al.*, 2000; Elachouri *et al.*, 2011; Vielhaber *et al.*, 2013), chaperones (Ciesielski *et al.*, 2013), exonucleases (Kornblum *et al.*, 2013), proteases (Herlan *et al.*, 2003; Matsushima *et al.*, 2010; Sesaki *et al.*, 2003), and even cytoskeletal proteins (Reyes *et al.*, 2011). Mitochondria also contain

1 BioMediTech and Tampere University Hospital, University of Tampere, Tampere, Finland

2 Department of Clinical Chemistry and Laboratory Medicine, Kyushu University Graduate school of Medical Sciences, Fukuoka, Japan

3 Department of Medical Laboratory Science, Junshin Gakuen University, Fukuoka, Japan

4 Department of Signal Processing, Tampere University of Technology, Tampere, Finland

5 Research Program of Molecular Neurology, University of Helsinki, Helsinki, Finland

*Corresponding author. Tel: +358 3 3551 7731, +358 50 341 2894; E-mail: howard.t.jacobs@uta.fi

†These authors equally contributed to this work.

topoisomerases, ligases, and other nucleases, although their specific roles in mtDNA metabolism are unclear. While a crude DNA synthetic machinery can be reconstituted *in vitro* from a minimal set of these proteins, the full complement of proteins required for faithful mtDNA replication *in vivo* remains to be determined.

Some components of the mtDNA maintenance machinery are shared with the nuclear compartment, including RNase H1 (Cerritelli *et al*, 2003) and many proteins implicated in base-excision repair (Alexeyev *et al*, 2013). Mostly, these are synthesized in two or more isoforms routed to different cellular compartments, for example, via differential splicing, alternative translational start sites (Suzuki *et al*, 2010), or ambiguous targeting signals (Karniely & Pines, 2005).

mtDNA is packaged together with TFAM and some other proteins into discrete intramitochondrial structures of variable composition, called nucleoids, by analogy with those of bacteria (Spelbrink, 2010; Bogenhagen, 2012). They contain a number of replication proteins whose functional roles are poorly understood, as well as proteins implicated in other cellular processes, including metabolic enzymes and chaperones, and proteins involved in intramitochondrial protein synthesis (Hensen *et al*, 2014). The apparatus of mitochondrial translation has been functionally implicated in mtDNA maintenance in yeast (Contamine & Picard, 2000), though not in metazoan cells (Storrie & Attardi, 1972).

The importance of mtDNA maintenance for cell physiology and homeostasis is underscored by the finding that its dysfunction leads to diverse types of human disease, including both infantile and late-onset pathologies, showing a bewildering variety of tissue specificities (Shadel, 2008; Rötig & Poulton, 2009; Ylikallio & Suomalainen, 2012). Loss of mitochondrial genome integrity or fidelity is also associated with aging (Oliveira *et al*, 2010; Bratic & Larsson, 2013). Identifying the full set of gene products involved in faithful mtDNA maintenance is thus of broad interest and importance.

To this end, we implemented a genome-wide (blinded) screen of *Drosophila* S2 cells, using dsRNA-based RNA interference (RNAi), taking advantage of the fact that S2 cells tolerate loss of mtDNA and continue to grow within the time scale of a typical experiment, despite decreased OXPHOS capacity. Furthermore, mtDNA nucleoids may be identified in these cells on the basis of fluorescence signal from the topology-dependent DNA-intercalating dye PicoGreen (Ashley *et al*, 2005). Effects on mtDNA copy number were then probed further using quantitative PCR (QPCR), with additional experiments conducted on the cellular phenotypes produced by knockdown of specific genes identified in the screen, notably those encoding subunits of ATP synthase, in order to test aspects of the mechanisms by which they may act.

Results and Discussion

Implementation and outcome of the primary screen

We set out to screen a genome-wide *Drosophila* dsRNA library in S2 cells, scoring for disappearance of the PicoGreen signal of mtDNA nucleoids as indicative of genes required for mtDNA maintenance. In initial trials, we found it difficult to pick out the nucleoid signal against background cytoplasmic fluorescence. Using a dsRNA against the PolG catalytic subunit (*tamas*) as a positive control,

and a dsRNA directed against GFP as a negative control, we established a protocol whereby it was possible reliably to score (by eye) the disappearance of nucleoid signal (see Fig 1). This involved applying the test dsRNA for 5 days in a 96-well plate format, with addition on day 3 of a dsRNA directed against TFAM. Although prolonged incubation with TFAM dsRNA itself led to mtDNA depletion, the shorter-term treatment conversely enhanced the nucleoid signal in negative control cells, whereas it was decreased to very low levels in cells treated with the positive control dsRNA.

The primary screen, conducted blind, was successful in identifying as positives most of the known factors involved in mtDNA metabolism (Table 1, category 1), giving confidence in its validity. In total, 105 dsRNA targets were initially judged as positive (Supplementary Table S1), of which almost half were recorded also as leading to cell death in a fraction of the cells. Consistent with previous studies (Rämet *et al*, 2002; Boutros *et al*, 2004), a further 276 targets (Supplementary Tables S1 and S2) gave massive cell death but no specific loss of nucleoid signal and were considered to represent essential genes that could not be studied further. Finally, an additional 132 targets were judged to give an abnormal outcome without complete loss of PicoGreen nucleoid signal (Supplementary Tables S1 and S3), but were not analyzed further, although many fell into similar categories or pathways as those on the positives list. The specificity and knockdown efficiency of this procedure has previously been documented (Clemens *et al*, 2000; Kleino *et al*, 2005). Knockdown was here verified at the RNA level by qRT-PCR for 17 specific targets (see SI).

We compared subjective judgment against a computational method to measure punctate fluorescence intensity (details to be published elsewhere). The latter gave many false positives due to variable background fluorescence, as well as false negatives due to cell debris. Based on rescreening, we judged the manual method to be superior (see SI for details), and we set criteria for defining positives as described below.

Rescreening to identify definitive positives

Positives were considered as confirmed if three positive but no negative findings were obtained. Those where a negative or ambiguous finding was recorded were retained only where three times as many clearly positive findings were obtained upon exhaustive rescreening (double asterisks in column H of Table 1) otherwise they were considered as false positives (double asterisks in column G of Supplementary Table S4).

Five targets that did not give consistently positive findings during rescreening were noted to give rise to multiple splice variants, encoding at least one polypeptide predicted to be mitochondrially localized. For these, we tested dsRNAs targeted specifically on the relevant splice variants, confirming several additional positives (Table 1, green background), whereas dsRNAs targeted against other splice variants or the entire gene were judged negative (Supplementary Table S4, blue background).

Of the original 105 positives, 83 were retained, 20 were reassigned as negative, and one was reassigned as abnormal (pink background in Supplementary Table S3). One was discarded because the dsRNA detected a pseudogene of a gene already in the list, another because a revised gene model combined it with another

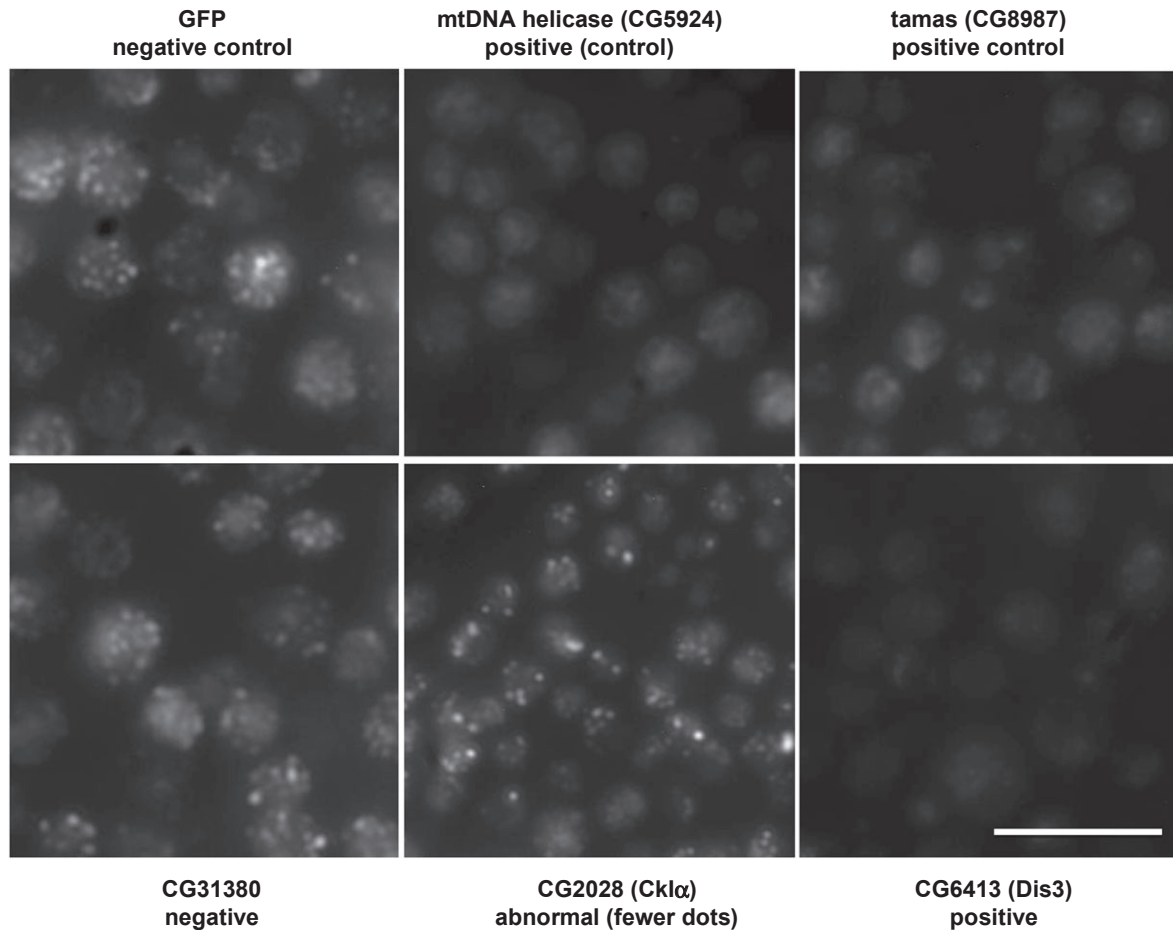


Figure 1. Screening of *Drosophila* dsRNA library by PicoGreen nucleoid fluorescence in S2 cells.

Micrographs of S2 cells stained with PicoGreen, following 5 days of treatment with the dsRNA indicated. GFP and tamas (Polg, CG8987) were used as negative and positive controls, respectively. In rescreening, CG5924 was also used as a positive control. Both were detected in the blinded screen as positives. Other images show a typical negative (CG31380), a typical positive (CG6413) and a typical case of a target classed as abnormal, in this case CG2028 (Ckl α), which showed a decreased number of nucleoid signals per cell. Images are optimized for brightness and contrast but with no other manipulations. Scale bar indicates 50 μ m.

positive, while another was subsequently re-annotated as two separate genes (but shown as a single entry in Table 1). Positive findings were also obtained for specific splice isoforms of three of the negatives. Thus, the confirmation of 86 out of 106 initial targets indicates a false-positive rate of 18%. One additional positive (CG5794) was unexpectedly identified by a dsRNA nominally targeted against a different gene. The positives fell into seven distinct classes: mitochondrial DNA replication or transcription, cytosolic translation, the proteasome, ATP synthase, mitochondrial dynamics or biogenesis, nuclear gene expression, and a seventh, miscellaneous category.

Although the primary negatives were not rescreened systematically, some that fell into similar functional pathways as definitive positives were re-evaluated using the same criteria. Eleven were promoted to the positives list (yellow background in Table 1), including, for example, most other subunits of ATP synthase. This implies that the initial screen may have missed as many positives as were actually retained, implying a false-negative rate of up to 1%. The overall results of the screen are summarized in Fig 2. The final number of definitive positives was 97, counting only once those with > 1 positive splice variant.

Copy number of mtDNA

For genes on the definitive positives list, we carried out QPCR to assess changes in mtDNA copy number after 5 days of dsRNA treatment (without concomitant TFAM knockdown), normalized against a single-copy nuclear DNA standard. Based on this assay (see Table 1, column G, raw data in Supplementary Table S5), we classified the positives as showing substantial (++, $\leq 60\%$) or modest (+) mtDNA depletion, no significant copy number change (0), or an increase in mtDNA (–).

Although these classes seem arbitrary, we found that RNAi knockdown of well-characterized components of the mtDNA replication machinery all gave values in the 20–60% range (++) . Surprisingly, we identified only 6 new genes from the screen whose knockdown produced a comparably severe mtDNA depletion. Three of these encode subunits of ATP synthase. The others were CG5794, encoding a de-ubiquitinating enzyme with unknown substrate(s), *TweddleY*, previously identified as a cuticular protein (Guan *et al*, 2006), and *pointed*, a well-studied Ets family transcription factor (Klaes *et al*, 1994; Morimoto *et al*, 1996). The fact that knockdown

Table 1. Definitive positives

Category number	Category name	CG number	Official name or symbol	Human orthologue	Other or common name(s) or putative function	mtDNA depletion	> 3 rescreenings	Note		
1	mtDNA replication and transcription	CG3910	mtTFB2	TFB2M	mt transcription factor B2	+	*			
		CG4217	TFAM	TFAM	mtTFA, mt transcription factor A	++				
		CG4337	mtSSB	SSBP1	mt single-stranded DNA-binding protein	++				
		CG4644	mtRNAPol	POLRMT	mt RNA polymerase	++				
		CG5924	CG5924	PEO1	Twinkle DNA helicase	++				
		CG6815	belphegor	ATAD3A, B, C	AAA domain containing protein 3	0	**			
		CG7175	mTerfs		mt transcription termination factor 5	++				
		CG8729	rmh1	RNASEH1	Ribonuclease H1	0	**	Weak positive, diminished nucleoid signal seen in some cells, also some cell death		
		CG8987	tamas	POLG	DNA polymerase γ catalytic subunit	++				
		CG18124	mTTF		mt transcription termination factor	++				
		CG33650	DNApol- γ 35	POLG2	DNA polymerase γ accessory subunit, CG8969	+	**			
		2	Cytosolic translation	CG1821	Rpl31	RPL31	Large subunit	-		
				CG3203	Rpl17	RPL17	Large subunit	-		
CG3751	RpS24			RPS24	Small subunit	nt				
CG3922	RpS17			RPS17, RPS17L	Small subunit	-				
CG3997	Rpl39			RPL39, RPL39L	Large subunit	0				
CG4111	Rpl35			RPL35	Large subunit	nt				
CG4759	Rpl27			RPL27	Large subunit	nt				
CG7283	Rpl10Ab			RPL10A	Large subunit	nt				
CG7490	RplP0			RPL0	Large subunit	nt				
CG7622	Rpl36			RPL36	Large subunit	-	*			
CG7726	Rpl11			RPL11	Large subunit	nt	*	Cell death not substantial in some repeats		
CG8922	RpS5a			RPS5	Small subunit	nt	*			
CG9282	Rpl24			RPL24	Large subunit	nt	*			
CG9677	Int6			EIF3E	eIF3, initiation factor 3, subunit E	nt	*	Abnormal distribution of some residual nucleoid signal within cells		
CG11522	Rpl6			RPL6	Large subunit					

Table 1 (Continued)

Category number	Category name	CG number	Official name or symbol	Human orthologue	Other or common name(s) or putative function	mtDNA depletion	> 3 rescreenings	Note		
3	Proteasome	<u>CG1341</u>	Rpt1	PSMC2, 5, 6	ATPase regulatory subunit 2 (or 5 or 6)	+				
		<u>CG5266</u>	Pros25	PSMA2	Core α -type subunit 2	+	**			
		<u>CG9324</u>	Pomp	POMP	Proteasome maturation protein	-				
		<u>CG9327</u>	Pros29	PSMA4	Core α -type subunit 4	+	*			
		<u>CG10149</u>	Rpn6	PSMD11	Non-ATPase regulatory subunit 11	+				
		<u>CG16916</u>	Rpt3	PSMC4	ATPase regulatory subunit 4	+				
		<u>CG18174</u>	Rpn11	PSMD14	Non-ATPase regulatory subunit 14	0	**	Severe cell death: few cells remained after 5 days		
		4	ATP synthase	<u>CG2968</u>	(1)G0230	ATP5D	δ Subunit of F1 (stalk)	+		
				<u>CG3321</u>	CG3321	ATP5I	Subunit e of Fo, dimerization/bending	++		
				<u>CG4307</u>	Oscp	ATP5O	OSCP subunit of F1/stator arm	++	**	
<u>CG4412</u>	ATPsyn-Cf6			ATP5J	Coupling factor 6, subunit of Fo/stator arm	+				
<u>CG6105</u>	(2)06225			ATP5L, ATP5L2	Subunit g of Fo, dimerization/bending	+				
<u>CG7610</u>	ATPsyn- γ			ATP5C1	γ Subunit of F1 (stalk)	+	*			
<u>CG6030</u>	ATPsyn-d			ATP5H	Subunit d of Fo, stator arm	+	*			
<u>CG8189</u>	ATPsyn-b			ATP5F1	Subunit b of Fo, stator arm	++	*			
<u>CG11154</u>	ATPsyn- β			ATP5B	Core β subunit of F1	+	**			
<u>CG3114</u>	erect wing			NRF1	Nuclear respiratory factor 1 homologue	0	**			
5	Mitochondrial biogenesis and dynamics	<u>CG6338</u>	Ets97D	GABPA	Nuclear respiratory factor 2, α subunit	+	**			
		<u>CG6512</u>	CG6512	AFG3L2, SPG7	m-AAA protease subunit	0	*			
		<u>CG8479</u>	opa1-like	OPA1	Dynammin-related protein required for inner mt membrane fusion	+	*			
		<u>CG9809</u>	spargel	PPARGC1A, B, PPRC1	PPAR γ coactivator	+	**	Weak positive, diminished number of nucleoid signals remaining in some cells		
		<u>CG14981</u>	maggie	TOMM22	Tom22 subunit of outer mt membrane translocase	+				
		<u>CG1057</u>	MED31	MED31	Mediator complex subunit 31, transcriptional elongation	0				
		<u>CG1554</u>	Rpl1215	POLR2A	RNA polymerase II 215kD subunit	+				
		<u>CG1810</u>	mRNA-cap	RNGIT	mRNA capping enzyme	0				
		<u>CG1874</u>	Not1	CNOT1	CCR4-NOT transcription complex subunit 1	0	**	Weak positive, diminished number of nucleoid signals remaining in some cells, some cell death also evident		
		6	Nuclear gene expression	<u>CG1057</u>	MED31	MED31	Mediator complex subunit 31, transcriptional elongation	0		
<u>CG1554</u>	Rpl1215			POLR2A	RNA polymerase II 215kD subunit	+				

Table 1 (Continued)

Category number	Category name	CG number	Official name or symbol	Human orthologue	Other or common name(s) or putative function	mtDNA depletion	> 3 rescreenings	Note
		<u>CG2163</u>	Pabp2	PABPN1, PABPN1L	Nuclear poly(A)-binding protein	–		
		<u>CG3162</u>	LS2		Novel U2AF-related regulator of differential splicing	0		
		<u>CG3675</u>	Art2	PRMT6	Protein arginine methyltransferase 2	+		
		<u>CG6525</u>	pps	SPOCD1, PHF3	Protein partner of snf, regulator of alternative splicing of Sex lethal	+	*	Diminished number of nucleoids remained in many cells
		<u>CG7626</u>	Spt5	SUPT5H	Transcription elongation factor SPT5 (DSIF complex)	0		
		<u>CG9591</u>	omd	INTS5	Integrator complex subunit 5, snRNA processing factor	+	*	Very few cells remained, after 5 days of treatment
		CG9748	belle	DDX3X,Y; DDX4	RNA helicase, implicated in X-chromosome dosage compensation	0		
		<u>CG10955</u>	Rtf1	RTF1	Component of RNA polymerase II-associated (PAF1) complex, transcriptional elongation	0	**	
		<u>CG11990</u>	hyrax	CDC73	Component of RNA polymerase II-associated (PAF1) complex, transcriptional elongation	0	*	
		CG17183	MED30	MED30	Mediator complex subunit 30, transcriptional elongation	0	**	
		<u>CG17358</u>	Taf12	TAF12	TATA box-binding protein-associated factor 12	+		
		CG17603	Taf1	TAF1, TAF1L	TATA box-binding protein-associated factor 1	+		
7	Miscellaneous (other or unknown)	<u>CG3539</u>	SLY-1 homologue	SCFD1	ER to Golgi vesicle transport	0	**	
		<u>CG4268</u>	Pitslire	CDK11A	Cyclin-dependent kinase superfamily, regulator of autophagy	–		
		<u>CG5794</u>	CG5794	USP34	Ubiquitin-specific peptidase (deubiquitinating enzyme)	++	*	
		CG6413	Dis3	DIS3	Exosome complex exoribonuclease	–	*	
		<u>CG7368</u>	CG7368		Zn finger protein	–	**	
		CG8021	CG8021	SLIRP	RNA-binding protein, regulation of mt RNA levels	0		
		CG9007	upSET	SETD5, MLL5	Zn finger protein, related to trithorax and histone lysine methyltransferases	–		
		<u>CG9397-H</u>	jing	AEBP2	Zn finger transcription factor, role in morphogenesis	–	**	Was clearly positive in 5 out of 7 trials

Table 1 (Continued)

Category number	Category name	CG number	Official name or symbol	Human orthologue	Other or common name(s) or putative function	mtDNA depletion	> 3 rescreenings	Note
CG9797		CG9797	CG9797		Zn finger protein	0	**	Weak positive, diminished number of nucleoid signals remaining in some cells
<u>CG10042</u>		MBD-R2			Methyl-DNA-binding protein	0		Some small nucleoid signals remained in some cells. Another dsRNA for this gene gave consistently negative findings
<u>CG10144</u>		CG10144	VPS8		Vesicle sorting to lysosomes	+	**	Nucleoid signals of diminished size or intensity seen in some cells, few cells remained after 5 d
CG10395		CG10395			Zn finger protein	0		
CG10582		Sin	POLR3E		Sex-lethal interactor, possible alternative splicing, proposed subunit of RNA polymerase III	0	*	
<u>CG10582-C</u>		Sin			Putative mitochondrially targeted isoform of Sin	0	**	Clear positive in 3 trials, but also some inconsistent findings
<u>CG12242</u>		GstD5			Glutathione S-transferase superfamily	(+)		Depletion just outside the border of significance, due to large variance
<u>CG13203-C</u>		CG13203			Putative mitochondrially targeted isoform of protein with unknown function	-	**	
<u>CG13779</u>		Sem1			Possible endopeptidase	0	**	
CG14084		Bet1	BET1		ER to Golgi vesicle transport	0	*	
CG14247		CG14247			Unknown function	0	*	
CG14634		CG14634			Unknown	+	**	
<u>CG15231</u>		IM4			Immune-induced molecule, peptide hormone?	+	*	
CG15343		CG15343			Pyridoxamine 5'-phosphate oxidase-like	0	*	
<u>CG15793</u>		Dsor1	MAP2K1, 2, 5		MAP kinase kinase	0	*	
CG17077		pointed	ETS1, 2		Ets transcription factor	++	*	
<u>CG31258</u>		Cenp-C			Centromere-binding, kinetochore function	nt	*	

Table 1 (Continued)

Category number	Category name	CG number	Official name or symbol	Human orthologue	Other or common name(s) or putative function	mtDNA depletion	> 3 rescreenings	Note
		<u>CG31079</u>			Unknown (gene model later withdrawn from Flybase)	nt		Predominantly induced cell death, few cells remaining seemed positive
		CG32085	CG32085	FBXL16	Putative ubiquitin ligase	0		
		<u>CG32561_2</u>	xmas-1, xmas-2	MCM3AP (xmas-2)	Putative protein acetyltransferase involved in DNA replication (xmas-2)	0	**	Clear positive in 4 trials, but also some inconsistent findings
		CG32570	Twdly		Suggested cuticular protein	++	*	
		CG32652	CG32652		Unknown	+	*	
		<u>CG34415</u>	mute		Muscle wasted, chromatin protein, histone locus body	0	**	Weak positive, diminished nucleoid signal seen in some cells, cell death seen only in some trials
		<u>CG33546</u>	gfzf		GST-containing Zn finger protein, putative mitotic checkpoint protein	0		
		CG42666-G	CG42666	REXO1	Exoribonuclease, predicted mitochondrially targeted isoform	nt	**	Weak positive, diminished number of nucleoid signals remained in some cells, dsRNA for entire gene was an inconsistent weak positive; see also Table S1. isoform-specific primers also target Adar, CG12598
		CG42666-D	CG42666	REXO1	Exoribonuclease, predicted mitochondrially targeted isoform	0	*	Weak positive, diminished number of nucleoid signals remained in some cells, dsRNA for entire gene was an inconsistent weak positive; see also Table S2
		<u>CG42281</u>	bunched		Signal transduction in response to growth factor (dpp) binding	-		

■ = not in original positives list; ■ = positive isoform with putative mt targeting; ■ = gene model withdrawn from Flybase.

Positives also showing substantial cell death are shown in underline and italic.

> 3 rescreenings: Positives that required many rounds of rescreening for final validation. * = 4 rounds; ** ≥ 8 rounds.

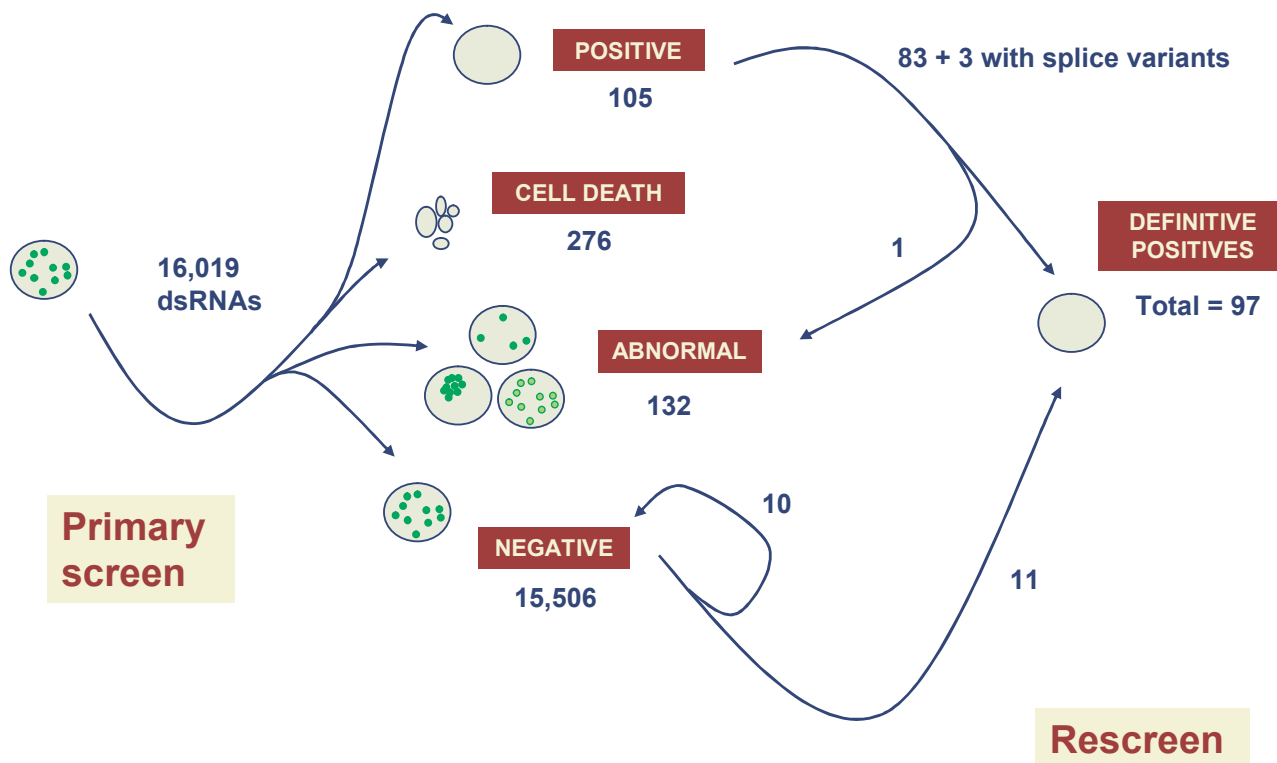


Figure 2. Overall results of the screen.

Schematic diagram illustrating number of dsRNAs analyzed, numbers of primary positives, negatives and other classes, and the results of rescreening.

of many genes resulted in loss of PicoGreen signal without major changes in mtDNA copy number suggests that indirect effects may be common, for example, affecting DNA topology, nucleoid architecture, membrane potential or cellular dye uptake.

Positives implicated in mtDNA metabolism

The positives include most of the proteins with known roles in mtDNA replication or transcription, notably the five shown previously to be essential for mtDNA maintenance in *Drosophila* (Goto *et al*, 2001; Maier *et al*, 2001; Iyengar *et al*, 2002; Matsushima *et al*, 2004; Humphrey *et al*, 2012). The list comprises the two subunits of PolG, the catalytic subunit of the mitochondrial RNA polymerase, mtSSB, the *Drosophila* homologue of the Twinkle helicase, transcription factors TFAM and mtTFB2M, mTERF family members mTTF and mTerf5 (Jöers *et al*, 2013), plus rnh1 (RNaseH1) and belphegor (homologue of mammalian ATAD3). All gave significant mtDNA depletion except for rnh1 and belphegor. DNA ligase III (lig3, CG17227) and mTERF family members mTerf3 and CG15390 (homologue of mammalian MTERF4) were consistently negative.

DNA ligase III was previously reported as dispensable for nuclear DNA repair but essential for mtDNA maintenance in human cells (Ruhanen *et al*, 2011) and mouse (Puebla-Osorio *et al*, 2006; Gao *et al*, 2011). Our data imply that it is redundant to at least one other mtDNA ligase in *Drosophila*. Similar arguments may apply to the absence of any topoisomerase, gyrase, recombinase, resolvase or helicase (other than Twinkle). Our study suggests that few dedicated components of the mtDNA replication apparatus remain to be

identified, but this does not exclude factors with overlapping roles in other cell compartments.

In mammalian mitochondria, the transcriptional apparatus is considered essential for both leading- and lagging-strand synthesis (Clayton, 1982; Fuste *et al*, 2010). RNase H1, also required for mtDNA maintenance in mouse (Cerritelli *et al*, 2003) and human cells (Ruhanen *et al*, 2011), might be involved in primer removal, but this typically also needs other helicases and nucleases such as *Fen1* (CG8648) and *Dna2* (CG2990), both implicated in mtDNA replication in mammalian cells (Duxin *et al*, 2009; Kazak *et al*, 2013). Their absence from the positives list is unsurprising, however, since both also function in the nucleus. One positive from the miscellaneous category, CG8021, appears to be a *Drosophila* homologue of SLRP, a mammalian protein involved in mitochondrial mRNA stabilization and processing (Sasarman *et al*, 2010; Chujo *et al*, 2012).

The mammalian ATAD3 family has been implicated in nucleoid organization (He *et al*, 2007), mitochondrial protein synthesis (He *et al*, 2012), regulation of apoptosis (Huang *et al*, 2011) and autophagy (Chen *et al*, 2011), cholesterol trafficking (Rone *et al*, 2012), mitochondrial dynamics (Gilquin *et al*, 2010) and stress resistance (Hoffmann *et al*, 2012). Loss of PicoGreen nucleoid signal with only a minor drop in mtDNA copy number may indicate that belphegor functions also in diverse pathways and that its effects on nucleoids and mtDNA may be indirect.

Nucleases other than RNase H1 have been shown or suggested to have roles in mtDNA metabolism in various organisms, including EXOG (Tann *et al*, 2011), EndoG (McDermott-Roe *et al*, 2011) and yeast Exo5 (Burgers *et al*, 2010). Exo5 has no *Drosophila*

homologue, and the somatically expressed EndoG/EXO1 isogene (EndoG, CG8862) was not detected as a positive, although two other nucleases (CG42666 isoforms D and G and Dis3) appear under the miscellaneous category. Both appear to be targeted to multiple locations in the cell, and, like *rnh1*, their knockdown did not give rise to significant mtDNA depletion at the 5 days time point. CG42666 has a well-characterized 3' to 5' (REX1-like) exoribonuclease domain shared with proofreading DNA polymerases, such as *E. coli* DnaQ (Pol III ϵ subunit), and with PAN2 deadenylase (Koonin & Deutscher, 1993). Its closest human homologues (REXO1 family) are poorly characterized, thus far implicated only in the suppression of transcriptional pausing (Tamura *et al.*, 2003), but REXO2 has recently been reported to function in mitochondria as an oligoribonuclease required for normal mitochondrial morphology, nucleic acid content and protein synthesis (Bruni *et al.*, 2013).

Dis3 is predicted to have a mitochondrial localization (Mitoprot II score 97%), supported by other studies (Mamolen, 2010; Hou *et al.*, 2012). Its human homologues DIS3 and DIS3L1 are considered to be the main nucleases of the RNA exosome complex (Tomecki *et al.*, 2010), with roles in RNA processing, degradation and surveillance in both nucleus and cytoplasm. Analysis of a putative mitochondrial function for CG42666 and Dis3 will thus be problematic, due to multiple localization and pleiotropy.

Cytosolic translation and the proteasome

These positives include both small and large ribosomal subunit proteins, one translation factor, core and regulatory/subunit components of the proteasome, plus one proteasome assembly chaperone. In total, there are some 91 genes annotated as cytosolic ribosomal proteins in the *Drosophila* genome, plus 7 others as 'ribosomal protein-like'. The frequency of annotated ribosomal proteins in the positives list (14/97, 14%) is thus significantly greater than in the genome as a whole (98/13,937, 0.7%, $P < 0.01$ by χ^2 test). Note also that 38 of 132 genes in the abnormal list (29%, Supplementary Table S3) are annotated as encoding ribosomal proteins, in addition to *Tor* and *raptor*, which positively regulate cytosolic protein synthesis. For proteasomal genes, the calculations are similar (7/97, 7.2%, versus 60/13,937, 0.4%, $P < 0.01$ by χ^2 test).

Knockdown of proteasomal components gave mtDNA depletion mainly in the moderate (+) range, whereas knockdown of some representative cytosolic ribosomal proteins produced either no change in copy number or a relative increase, which may reflect cell death occurring in a large fraction of the cells by the time they were harvested.

One possible explanation for the link between cytosolic translation and mitochondrial homeostasis is that one or more short-lived and/or poorly translated cytosolic mRNAs encode products essential for maintaining mitochondria. Alternatively, mitochondria might be turned over by enhanced autophagy, which results from a prolonged deficiency of protein synthesis (Neufeld, 2012). Consistent with this, Pitslre, a negative regulator of autophagy (Wilkinson *et al.*, 2011), was positive in our screen.

A more specific impact on mitochondria could involve mitonuclear regulation to minimize proteotoxic stress due to an insufficient supply of nuclear-coded OXPHOS subunits. The apparatus of mitochondrial translation was absent from the list of positives, consistent with antibiotic studies (Storrie & Attardi, 1972), but in contrast

with findings in fungi, where translational deficiency leads to loss of mtDNA (Contamine & Picard, 2000). However, a stress signal emanating from the mitochondrial ribosome would most logically produce growth arrest (Richter *et al.*, 2013), rather than mtDNA depletion.

Concomitant knockdown of mitochondrial and cytosolic ribosomal protein genes produced no rescue of cell-death phenotypes, and no obvious rescue of PicoGreen nucleoid signals (Table 1). Mitonuclear imbalance thus does not seem to explain the identification of cytosolic ribosomal protein genes as positives in the study, despite evidence for its involvement in other phenomena, such as aging (Gomes *et al.*, 2013; Houtkooper *et al.*, 2013).

The proteasome represents a crucial intracellular system for turnover of damaged or misfolded proteins, and for post-translational regulation. Proteasomal impairment in yeast has previously been shown to entrain mtDNA instability (Malc *et al.*, 2009). A possible explanation is that proteasomal insufficiency signals the activation of other turnover pathways impacting mitochondria, for example, via the Pink1/parkin system (Narendra *et al.*, 2012). The proteasome may also have more specific targets relevant to mitochondrial homeostasis, as suggested by the identification of a deubiquitinating enzyme (CG5794) as a positive. Two of its yeast homologues, UBP9 and UBP13, regulate mtDNA maintenance via effects on the biosynthesis of ATP synthase (Kanga *et al.*, 2012), although the analogy cannot be exact, since the target is mtDNA-encoded in yeast, but nuclear-coded in animals. UBP9/13 and CG5794 are not orthologous, but the underlying principle may be similar. Known targets of ubiquitylation in mitochondria include proteins involved in mitochondrial dynamics, such as mitofusins (Yonashiro *et al.*, 2006; Cohen *et al.*, 2008). The closest homologues of CG5794 in yeast and human perform diverse tasks related to peroxisomal protein import (Debelyy *et al.*, 2011), cell-cycle regulation (Bozza & Zhuang, 2011), methylmercury resistance (Hwang *et al.*, 2012), nuclear DNA repair (Sy *et al.*, 2013), and signaling (Lui *et al.*, 2011; Poalas *et al.*, 2013).

ATP synthase

The primary screen yielded 5 of the 14 nuclear genes encoding subunits of ATP synthase, once again far above random expectation ($P < 0.01$, χ^2 test). After rescreening, 9 ATP synthase genes were classed as definitive positives (Table 1), including subunits of both the F_0 and F_1 subcomplexes: F_1 core subunit β , stalk subunits γ and δ , stator arm subunits b, d, OSCP and Cf6, and F_0 subunits e and g, implicated in dimerization. F_1 core subunit α and stator arm subunit f were negative, while stalk subunit ϵ and F_0 subunit c were not consistently positive and thus appear in Supplementary Table S4, although may better be considered as weak positives. A putative assembly factor for ATP synthase, the homologue of yeast Atp12, plus the two isogenes (CG13551 and CG34423) for the inhibitor subunit ATPIF1 were negative.

The requirement for ATP synthase (OXPHOS complex V, cV) to maintain normal mtDNA copy number mirrors observations in yeasts (Giraud & Velours, 1997; Lai-Zhang *et al.*, 1999; Clark-Walker *et al.*, 2000; Contamine & Picard, 2000; Lefebvre-Legendre *et al.*, 2003; Duvezin-Caubet *et al.*, 2006; Wang *et al.*, 2007) and trypanosomes (Schnauffer *et al.*, 2005). This suggests the operation of a universal mechanism, whereby cV knockdown generates a signature of bioenergetic stress, signaling a decrease in mitochondrial

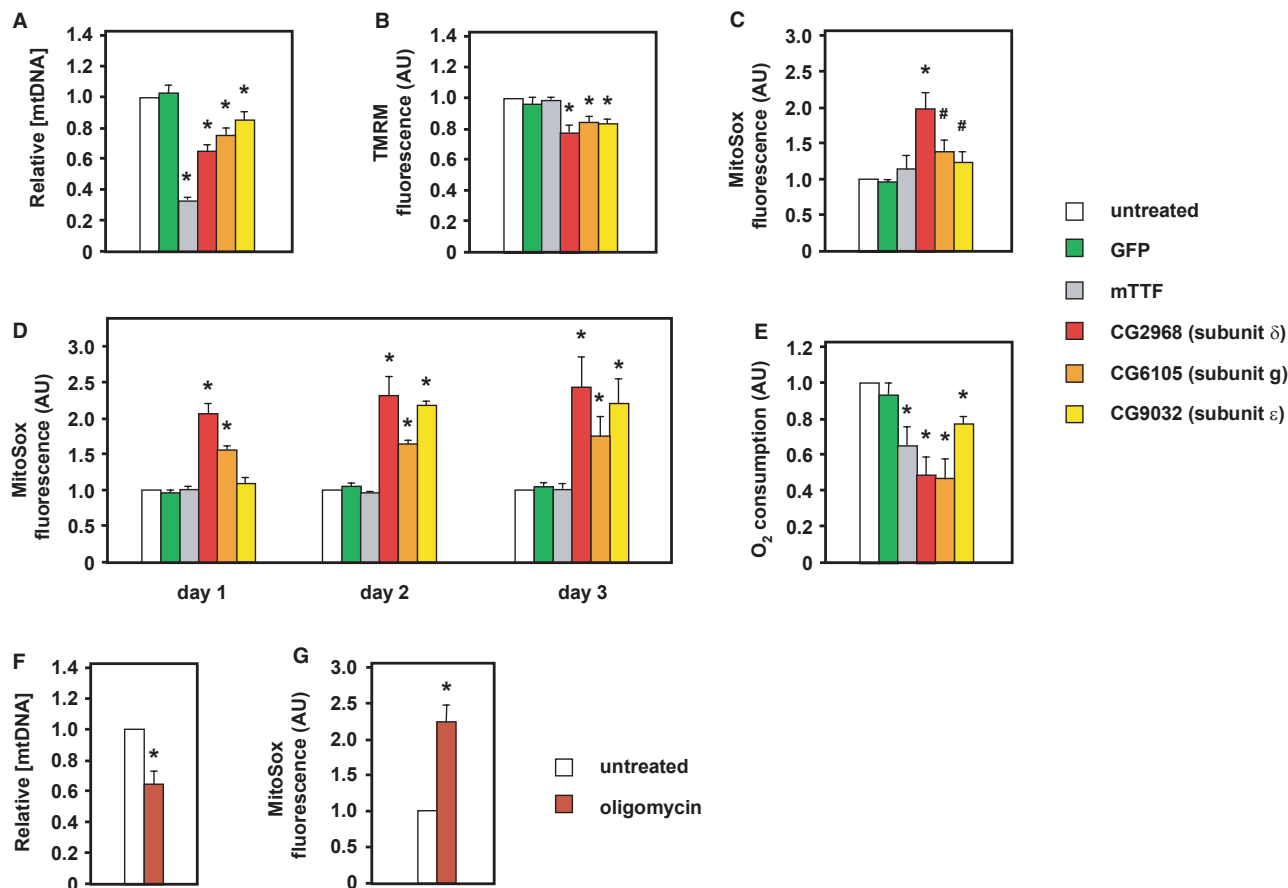


Figure 3. Effects of knockdown of cV subunits.

A–C Relative mtDNA level (A), TMRM fluorescence (B) and MitoSox fluorescence (C) following treatment for 5 days with dsRNA against the genes indicated.

D MitoSox fluorescence following treatment for 1–3 days with dsRNA against the genes indicated.

E Whole cell respiration following treatment for 5 days with dsRNA against the genes indicated.

F, G Relative mtDNA level (F) and MitoSox fluorescence (G) after 5 days of treatment with oligomycin.

Data information: All data normalized to untreated cells. Note that GFP is a negative control, since the cells have no GFP gene, whereas mTTF is a positive control. Means \pm SD from at least 4 independent experiments each conducted in triplicate. Asterisks (*) or hashes (#) indicate significant differences from untreated and from GFP values ($P < 0.01$ and $P < 0.05$, respectively). Note that correction for the decrease in mitochondrial content mitigates the decrease in TMRM fluorescence, but increases still further the MitoSox fluorescence (Supplementary Fig S4D).

Source data are available online for this figure.

biogenesis and/or an increase in mitochondrial turnover. Deficiency of ATP synthase would be expected to disturb mitochondrial membrane potential, impairing the import of nuclear-coded OXPHOS subunits and leading to downregulation of mtDNA as a response to limit proteotoxic stress inside mitochondria. ATP synthase mutations that result in uncoupling are known to lead to mtDNA instability in yeast (Wang *et al*, 2007), and genes encoding subunits of the mitochondrial import machinery can suppress the *petite* negativity of yeast mutants lacking ATP synthase (Dunn & Jensen, 2003).

Another predictable effect of ATP synthase knockdown would be an increase in mitochondrial ROS production, resulting from inhibition of electron flow in the respiratory chain and over-reduction of its various electron carriers. To elucidate the mechanism of mtDNA depletion associated with cV knockdown, we therefore measured mitochondrial membrane potential and ROS production by flow cytometry, using the fluorescent probes TMRM and MitoSox, respectively.

To minimize secondary effects, we selected genes whose knockdown produced moderate mtDNA copy number depletion, confirming first that their relative knockdown potency correlated with the amount of mtDNA depletion produced (Fig 3A, Supplementary Fig S2A). Knockdown of either of the two clear positives (CG6105, subunit g, and CG2968, subunit δ), plus one that gave only a weak knockdown and minimal mtDNA depletion (CG9032, subunit ϵ), produced coherent effects (Fig 3B and C). In all cases, there was a small but significant decrease in TMRM fluorescence per cell and a more variable increase in MitoSox fluorescence, whereas these parameters were unaffected by knockdown of mTTF, which acts directly on mtDNA transcription (Roberti *et al*, 2006) and replication (Jöers *et al*, 2013).

Based on successive measurements over the first 3 days of dsRNA treatment (Fig 3D), the effect on MitoSox fluorescence also reflected the different potencies of knockdown, with CG2968 (subunit δ) producing the most rapid, substantial and sustained ROS

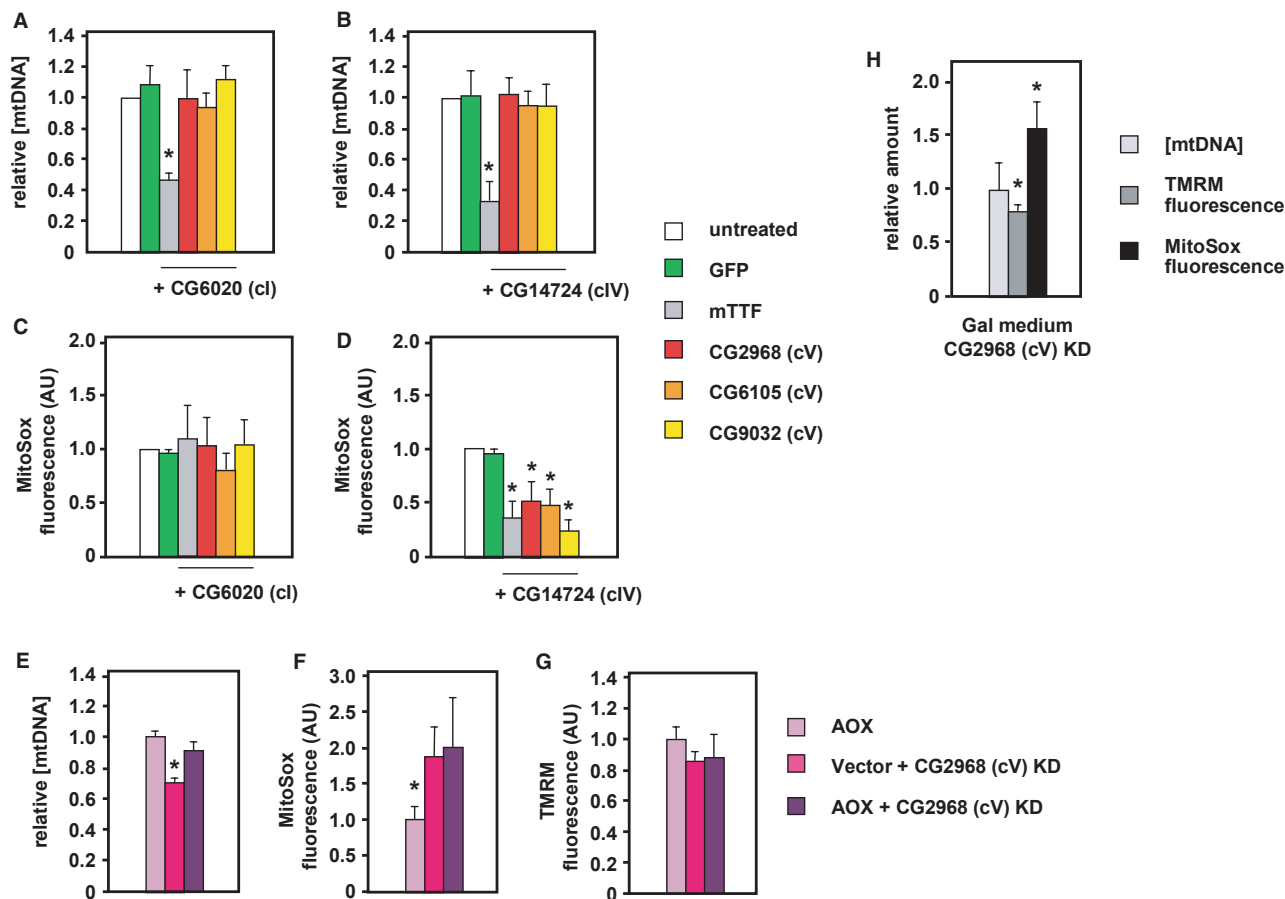


Figure 4. Effects of knockdown of cV subunits in combination with other treatments.

A–D Relative mtDNA level (A, B) and MitoSox fluorescence (C, D) following 5 days of treatment with dsRNA against the genes indicated.

E–G Relative mtDNA level (E), MitoSox fluorescence (F) and TMRM fluorescence (G) of cells stably expressing AOX or empty vector, as indicated, after 5 days of treatment with dsRNA against CG2968, as shown. Note that these cells were cultured in the presence of hygromycin to maintain the AOX-expressing or control plasmid.

H Indicated parameters, following 5 days of treatment with dsRNA against CG2968, in cells grown in galactose-containing (Gal) medium.

Data information: All data normalized to untreated cells or (E, F, G) AOX-expressing but otherwise untreated cells grown in parallel. Means \pm SD from at least 4 independent experiments, each conducted in triplicate. Asterisks (*) indicate significant differences between experimental and control cell values ($P < 0.01$).

Source data are available online for this figure.

increase. Knockdown of ATP synthase also decreased whole cell respiration (Fig 3E). Prolonged treatment with a sublethal dose of oligomycin (50 nM, 5 days) phenocopied the effect of cV knockdown on both mtDNA level (Fig 3F) and MitoSox fluorescence (Fig 3G), implicating the enzymatic activity of cV, rather than any structural role in maintaining cristal architecture (Davies *et al*, 2012). Oligomycin binds the *c* ring of cV, most likely at its interface with subunit *a* (Symersky *et al*, 2008), so is unlikely to disturb the dimeric structure of the complex, upon which its membrane-deforming action depends.

We next targeted single-copy genes encoding subunits of the respiratory chain, all of which were negative in the initial screen. When genes for subunits of complex I (CG6020, subunit NDUFA9) or complex IV (CG14724, subunit COX5A) were knocked down individually, there was no significant effect on mtDNA copy number (Supplementary Fig S2B), despite a decrease in TMRM fluorescence (Supplementary Fig S2C) and in whole cell

respiration (Supplementary Fig S2D), similar to that seen after cV knockdown (compare with Fig 3B and E). Knockdown of cI subunit CG6020 produced a small, though non-significant increase in MitoSox fluorescence (Supplementary Fig S2E), while knockdown of cIV subunit CG14724 resulted in a significant *decrease* thereof.

Simultaneous knockdown of subunits of cV and either cI (Fig 4A) or cIV (Fig 4B) abolished the copy number decrease seen when cV alone was targeted (compare with Fig 3A) and prevented the concomitant ROS increase (Fig 4C and D). In contrast, mtDNA depletion by mTTF knockdown was not altered by simultaneous knockdown of cI or cIV subunits. Concomitant knockdown of CG2968 (cV) with genes coding for other subunits of cI or cIV also reversed mtDNA depletion and mitigated ROS increase (Supplementary Fig S3A and B). Knockdown of subunits of cI alone did produce a small drop in mtDNA copy number (Supplementary Fig S3C) and an increase in ROS (Supplementary Fig S3D), though these changes

were not always statistically significant and were comparable with those produced by knockdown of CG9032 (cV subunit ϵ), thus probably too small for these genes to have been scored as positives in the primary screen.

Overall, these findings indicate increased mitochondrial ROS production as the most consistent marker linking cV knockdown and mtDNA depletion. Accordingly, treatment with the antioxidant TBAP, a chemical mimetic of superoxide dismutase (Faulkner *et al*, 1994), produced a small but statistically significant mitigation of both effects (Supplementary Fig S3E and F), while TBAP alone produced small effects in the opposite direction. However, increased mitochondrial ROS is not sufficient to induce mtDNA depletion.

Stable expression of the *Ciona intestinalis* alternative oxidase (Fig 4E–G), or growth of cells in medium containing galactose in place of glucose (Fig 3H), enforcing the use of OXPHOS to produce ATP (Robinson *et al*, 1992), blocked copy number depletion, but preserved the changes in MitoSox (and TMRM) fluorescence produced upon cV knockdown. Copy number depletion must therefore depend on the integration of different metabolic signals.

To investigate the mechanism of mtDNA depletion, we analyzed mitochondrial turnover, using vital dyes for both mitochondria and lysosomes, employing flow cytometry (Fig 5A) and confocal microscopy (Fig 5B and C). Fluorescence per cell of both LysoTracker Red and NAO, a vital dye for the inner mitochondrial membrane, was

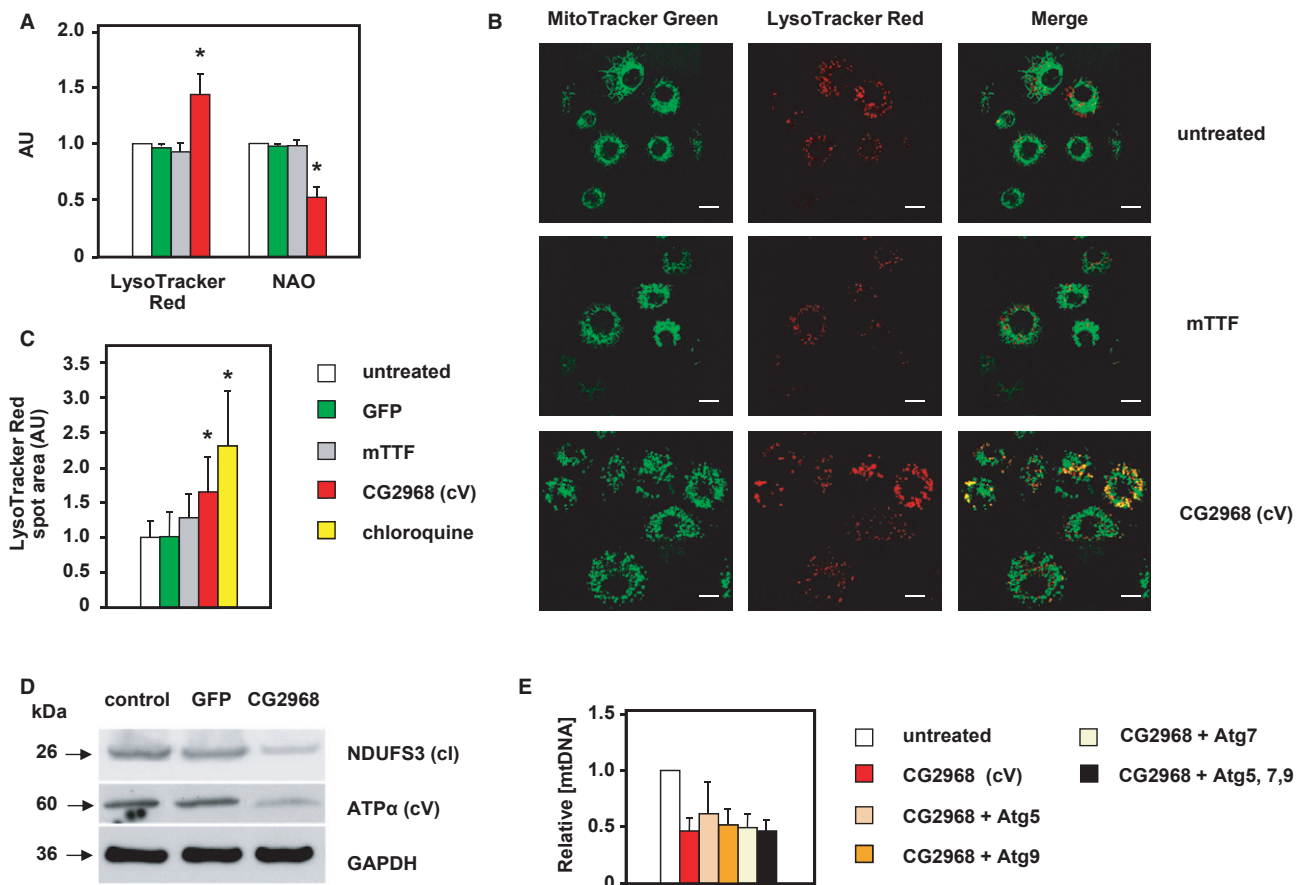


Figure 5. Effects of cV knockdown on mitochondrial and lysosomal content.

A LysoTracker Red and NAO fluorescence of cells treated as indicated for 5 days with dsRNA against the indicated genes, normalized against the values for untreated cells. Mean \pm SD for four independent experiments; asterisks indicate significant differences from untreated, $P < 0.05$.

B Representative confocal microscopy images of living cells treated for 5 days with dsRNA against the indicated genes and stained with both MitoTracker Green and LysoTracker Red. The scale bar is 10 μ m.

C Mean areas of LysoTracker red staining in cells treated for 5 days with dsRNA against the indicated genes, or with chloroquine. Mean \pm SD for three independent experiments, in each of which ≥ 50 cells were analyzed by confocal microscopy in a single plane. Analysis of z-stacks in ≥ 30 cells gave similar results. Note that the increase in lysosome content was intermediate between that of untreated cells and cells treated with chloroquine to block lysosomal turnover of autophagosomes. Asterisks indicate significant differences from untreated, $P < 0.01$.

D Western blot of total protein extracts from control S2 cells and cells treated with dsRNAs against GFP or CG2968 (cV), probed for NDUFS3 (cl), ATP synthase subunit α (cV) and GAPDH (loading control).

E Relative mtDNA level after 5 days of treatment with dsRNAs against the indicated genes. Mean \pm SD for five independent experiments; other data classes were significantly different from untreated, $P < 0.05$.

Source data are available online for this figure.

unaffected by 5 days of dsRNA treatment against mTTF or GFP, but knockdown of *cV* (CG2968) increased LysoTracker staining by 50%, while halving the NAO signal (Fig 5A). Western blotting indicated a general decrease in mitochondrial content, affecting *cl* as well as *cV* (Fig 5D).

Live imaging confirmed the increase in lysosomal signal per cell (Fig 5B and C); MitoTracker Green staining revealed increased mitochondrial fragmentation and a greatly enhanced colocalization of LysoTracker and MitoTracker signal in most cells (Fig 5B). Concomitant knockdown of three core components of the canonical autophagy machinery was unable to block mtDNA depletion (Fig 5E), indicating that other turnover pathways are involved, such as retrotranslocation coupled to proteasomal degradation (Margineantu *et al*, 2007; Heo *et al*, 2010), mitochondrial vesicle delivery to lysosomes, via Pink1/parkin signaling (McLelland *et al*, 2014), or intramitochondrial turnover pathways (see following section).

Co-expression of AOX, which blocked the decrease in mtDNA copy number caused by *cV* knockdown, attenuated the increase in LysoTracker signal (Supplementary Fig S4A), while chloroquine, which prevents lysosomal acidification, partially rescued mtDNA depletion (Supplementary Fig S4B). These findings are consistent with lysosomal involvement, but do not exclude a contribution from other pathways. Persistent heat stress produced a qualitatively similar effect (Supplementary Fig S4C). Thus, disturbance of the balance between ATP synthase and the respiratory chain complexes may be just one of many processes that produce this outcome. However, given the observations in yeast discussed above, we propose that it represents a conserved homeostatic mechanism for renewal of mitochondria under a variety of metabolic stress conditions.

Mitochondrial biogenesis and homeostasis

Very few mitochondrial proteins appeared in the ‘cell death only’ list (Supplementary Table S2), confirming that their broad absence from the main positives list was not due to their being essential for cell survival. Positives that we did find were *opa1*-like (orthologue of human OPA1 and yeast MGM1), CG6512 (m-AAA protease complex) and *maggie* (TOMM22), plus three fly homologues of genes for transcriptional activators or co-activators implicated in regulating mitochondrial biogenesis: *erect wing* (NRF-1), *Ets97D* (α subunit of NRF-2), and *spargel* (PGC-1 α). Knockdown of these genes typically produced a modest mtDNA depletion, consistent with the idea that mitochondrial content and quality depends on the balance between mitochondrial turnover and biogenesis, which are independently regulated. The role of mitochondrial quality control in pathological states is already well documented (Martinelli & Rugarli, 2007; Ranieri *et al*, 2013; Celardo *et al*, 2014). Clearance of damaged mitochondria is crucial to protection from somatic mtDNA mutations, whereas it may compound defects caused by inherited mutations.

The mitochondrial protein import machinery is required for cell viability because of the essential functions of mitochondria. Therefore, it is surprising that only a single component of this machinery scored positive in the study. Despite extensive functional studies (Shiota *et al*, 2011), there is little to indicate any special property of TOM22 that may explain this finding, although it has been implicated as a site of regulation of the entire TOM complex by cytosolic protein kinases (Schmidt *et al*, 2011). It was recently linked to aging

(Joseph *et al*, 2012) and appears to be a specific target of parkin in promoting mitophagy (Bertolin *et al*, 2013).

Similar questions arise for CG6512. Mammalian OPA1 can be processed by both the m-AAA (Ehse *et al*, 2009) and i-AAA proteases (Song *et al*, 2007), and in *Drosophila* also by the rhomboid protease *rho-7* (Rahman & Kylsten, 2011). OPA1 or its isoforms have been previously implicated in mitochondrial genome maintenance (Herlan *et al*, 2003; Sesaki *et al*, 2003; Elachouri *et al*, 2011), although there is no compelling evidence of a direct interaction with mtDNA. The general consensus is that it acts via its documented roles in mitochondrial quality control, affecting cristal morphology and innermembrane fusion (Frezza *et al*, 2006; Meeusen *et al*, 2006), as well as metabolism and calcium homeostasis (Kushnareva *et al*, 2013).

Knockdown of *rho-7*, CG2658 (paraplegin-like m-AAA component), or CG3499 (i-AAA), all of which were negative in the original screen, produced no significant effects on mtDNA levels (Supplementary Fig S5A). However, we found that these genes, together with *opa1*-like and CG6512, participate in a mutually interactive network, such that knockdown of any component regulates the others at the RNA level (Supplementary Fig S5B). In particular, knockdown of *opa1*-like entrained the upregulation of all 4 proteases, while knockdown of CG6512 upregulated CG2658 and CG4399, suggesting a common pathway modulating mitochondrial biogenesis or turnover. Mitochondrial proteases were also upregulated when *cV* was knocked down.

Nuclear gene expression

Knockdown of most of the previously characterized components of the apparatus of nuclear gene expression that were positive in the screen (category 6 genes in Table 1) produced no significant change in mtDNA copy number. Since most of them are required for cell survival, a mitochondrial defect may therefore be no more than a staging post on the road to cell death. However, downregulation of six genes, *RpII215*, *Art2*, *pps*, *omd*, *Taf12*, and *Taf1*, with documented or hypothesized roles in chromatin modification, Pol II transcription, or RNA processing, led to decreased mtDNA copy number. A possible role in mtDNA metabolism independent from their functions in the nucleus thus needs to be carefully evaluated.

CG10582 (Sin, Sex-lethal interactor) may also be considered a representative of this group. It was originally identified in a yeast 2-hybrid screen as a partner of the splicing factor Sex lethal (Dong & Bell, 1999), but its orthologues are subunits of RNA polymerase III (Hu *et al*, 2002; Cramer *et al*, 2008), specifically POL3E, the Pol III homologue of TFIIF (Carter & Drouin, 2010; Kassavetis *et al*, 2010), required for termination (Landrieux *et al*, 2006). No other subunits of RNA polymerase III were detected in the screen. One Sin isoform (weakly) predicted to be mitochondrial was also positive in the PicoGreen assay, as was *pps* (protein partner of *snf*), also implicated in alternative splicing of Sex lethal (Johnson *et al*, 2010).

pointed (CG17077) has 4 isoforms created by differential splicing, though none is predicted with high confidence to be mitochondrial. It exhibits functional redundancy in specific contexts (Baltzer *et al*, 2009) with its homologue *Ets97D* (NRF-2 α), suggesting that the canonical functions of the latter in regulating mitochondrial biogenesis might be shared by the two transcription factors in *Drosophila*.

Miscellaneous positives: 'unknowns' and 'others'

This heterogeneous group mainly comprises poorly characterized proteins. In addition to several putatively implicated in RNA metabolism, plus a number of zinc finger proteins, they include three that function in vesicle trafficking. Bet1 (CG14084) and Slh (CG3539), conserved from yeast to humans, are members of the syntaxin 5-SNARE complex, involved in ER to Golgi transport (Newman *et al*, 1990; Hay *et al*, 1997). Bet1 is a SNARE protein, while Slh, orthologue of mammalian and yeast Sly1 (Dascher *et al*, 1991; Sogaard *et al*, 1994; Dascher & Balch, 1996), is a SNARE-interacting SM-family protein. Knockdown of each produced no significant mtDNA depletion, indicating that loss of PicoGreen nucleoid signal is due to something other than decreased copy number. CG10144 is the *Drosophila* orthologue of yeast (and human) Vps8, involved in vesicle sorting to lysosomes (Chen & Stevens, 1996; Horazdovsky *et al*, 1996). Our findings suggest a novel role for vesicle trafficking in mitochondrial homeostasis.

Aside from these, no specific pathway or cellular complex is identified more than once in the list. Knockdown mainly produced little or no mtDNA depletion, although three further positives that did so warrant further study, namely IM4, previously implicated in innate immunity, CG14634 and CG32652, all of which encode proteins with no identified homologues outside of insects.

Conclusions

In this study, we use a genome-wide screen to identify novel components of the machinery of mtDNA copy number maintenance and regulation. Most positives belonged to coherent sets, as discussed above (summarized in Fig 6). Unexpectedly, absent from the positives list was any gene involved in mitochondrial protein synthesis or OXPHOS assembly, most known signaling pathways, any subunit of the respiratory chain complexes or of intermediary metabolism, genes involved in handling oxidative stress, or in nucleotide transport and metabolism, which cause mtDNA depletion syndromes in humans (Saada, 2004; Copeland, 2012). The latter is not surprising, since these genes are of pathological importance only in non-proliferating cells, where the standard pathways sustaining the supply of precursors for both nuclear and mtDNA synthesis are unavailable. However, apart from POLG and Twinkle (PEO1), the homologues of most other human mtDNA depletion genes, including MPV17 (Spinazzola *et al*, 2006), FBXL4 (Bonnen *et al*, 2013), and SERAC1 (Sarig *et al*, 2013), were also absent, although some may be false negatives. Others, such as MGME1 (Kornblum *et al*, 2013), have no *Drosophila* homologue.

On the other hand, few novel candidates emerged, for direct involvement in DNA metabolism, despite the burgeoning number of proteins said to be present in nucleoids (Reyes *et al*, 2011;

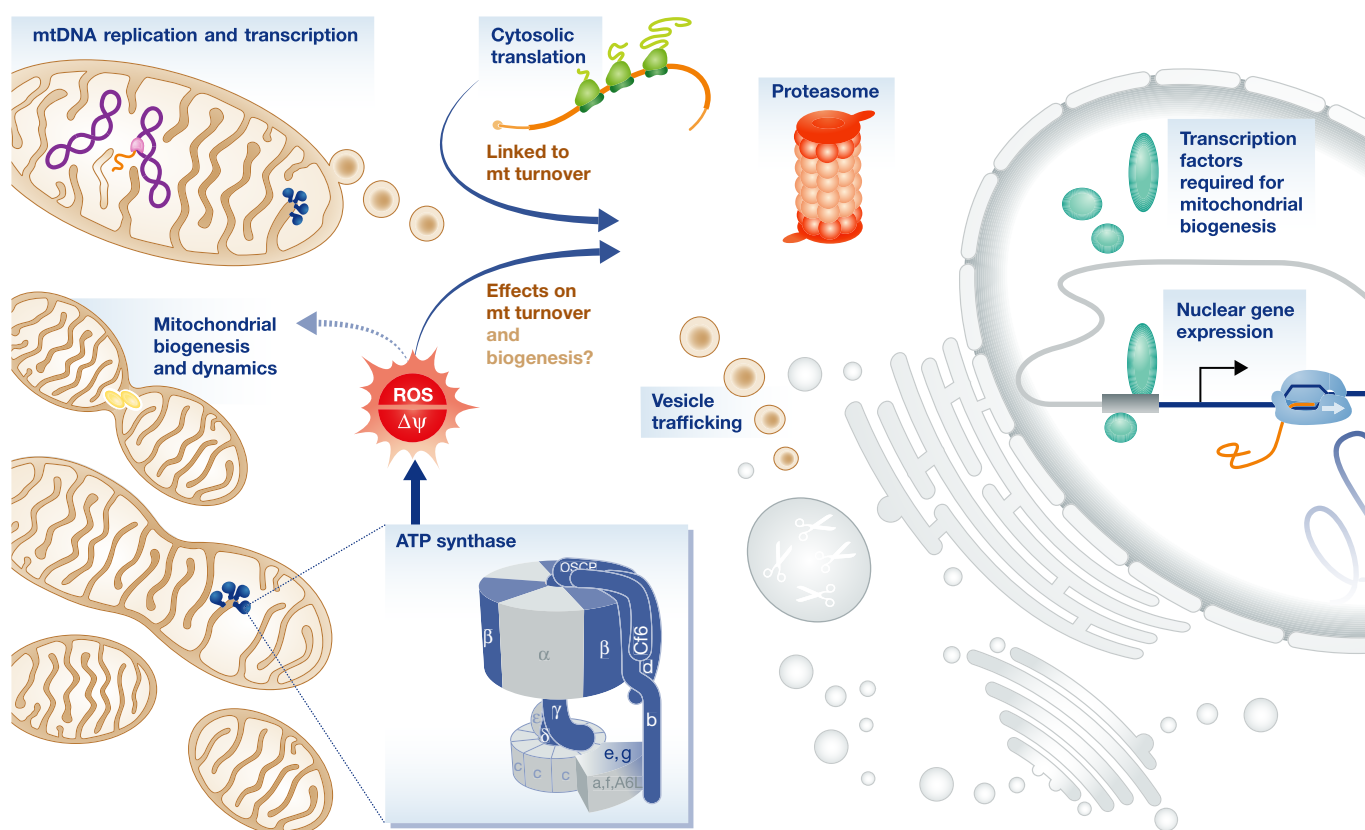


Figure 6. Pathways inferred to be involved in mitochondrial DNA copy number maintenance and homeostasis.

Schematic diagram of the cell, showing categories of identified genes in the positives list (in dark blue), and their possible links to a ROS (or membrane potential, $\Delta\psi$) surveillance mechanism, orchestrated by ATP synthase.

Boghenagen, 2012). The involvement of *cV*, the proteasome, and some key genes for mitochondrial dynamics and quality control suggests that mtDNA copy number is dependent on a balance between mitochondrial turnover and biogenesis, in which specific stresses, notably mitochondrial ROS production and impaired cytosolic protein turnover, may be crucially important.

ATP synthase was inferred to be a key player in homeostatic maintenance of mitochondria, and thus in the amount of mtDNA and its gene products. Mutations in ATP synthase in fungi are already known to play a determining role in whether mtDNA loss can be tolerated (Contamine & Picard, 2000; Lefebvre-Legendre *et al*, 2003), or even facilitated (Giraud & Velours, 1997; Lai-Zhang *et al*, 1999; Contamine & Picard, 2000), but with membrane potential implicated as a key parameter (Duvezin-Caubet *et al*, 2006; Wang *et al*, 2007). In S2 cells, excess ROS production was better correlated with the strength and kinetics of mtDNA depletion, but this could be an epi-phenomenon. The fact that membrane potential 'per mitochondrion' (Supplementary Fig S4D) was restored to its starting value suggests that its disturbance may yet prove to be the primary inducer.

Excess ROS has elsewhere been proposed to lead to mtDNA depletion under pathological conditions (Larosche *et al*, 2010; Quinzii *et al*, 2013), and pathological defects in ATP synthase associated with ROS overproduction (Baracca *et al*, 2007) may downregulate mitochondrial functions (Wojewoda *et al*, 2010, 2011) and even lead to mtDNA loss (Vergani *et al*, 1999; Turner *et al*, 2005). ROS overproduction has been widely suggested both to provoke mtDNA damage, but also to result from it. However, a recent report showed that unrepaired damage leads to mtDNA depletion without increased ROS (Shokolenko *et al*, 2013), and the role of ROS in producing somatic mtDNA mutations in the PolgA mutator mouse is disputed (Trifunovic *et al*, 2005; Dai *et al*, 2010). Thus, the increased mitochondrial ROS seen when *cV* is knocked down is more logically a cause than a consequence of mtDNA depletion. Furthermore, although ROS may provoke strand breakage, interfering directly with mtDNA replication (Han & Chen, 2013), our data instead suggest that ROS activates mitochondrial turnover before widespread DNA damage would be sustained, as occurs in mammalian cells under TNF α signaling (Nagakawa *et al*, 2005; Vadrot *et al*, 2012). However, an opposing pathway has also been suggested, in which ROS over-production promotes mitochondrial biogenesis, not turnover (Moreno-Loshuertos *et al*, 2006, 2011).

A key aim of future research will be to identify the sensor molecule(s) integrating changes in mitochondrial ROS (or membrane potential) with other metabolic signals, in order to modulate mitochondrial biogenesis and turnover. One possibility consistent with our data is that ATP synthase itself is that sensor.

Materials and Methods

Cell maintenance

Drosophila S2 cells (Invitrogen) were cultured under standard conditions, in Schneider's medium (Sigma) and diluted 1:6 every 3-4 d. In selected experiments, various drugs were added or glucose was replaced with the same concentration of galactose. S2 cells stably

expressing *Ciona intestinalis* AOX were generated by co-transfection with a plasmid conferring hygromycin resistance.

Screening of *Drosophila* dsRNA library and fluorescence microscopy of nucleoids

S2 cells were seeded into 96-well plates and treated over 5 days with 0.6–1.2 μ g of dsRNA from the library (Open BioSystems), alongside positive and negative controls in each plate, as described previously (Jöers *et al*, 2013). Nucleoids were visualized by fluorescence microscopy after staining with Quant-iTTM PicoGreen dsDNA reagent (7.5 μ l/ml, Invitrogen). Larger-scale dsRNA treatments for mtDNA copy number evaluation and analysis of cellular parameters were performed essentially as previously (Jöers *et al*, 2013).

Nucleic acid isolation and QPCR

Total RNA was isolated from S2 cells as previously (Jöers *et al*, 2013). For DNA isolation, cells from a single well of a 24-well plate were processed by a procedure determined to give consistent results irrespective of cell density, involving SDS lysis, proteinase K digestion, isopropanol precipitation and overnight resuspension at 55°C (see SI). For larger-scale experiments, DNA was prepared from 1.5×10^6 cells cultured in 6-well plates, as previously (Jöers *et al*, 2013). Mitochondrial DNA copy number was assessed by QPCR using primers against COXII or 16S rRNA (for mtDNA) and Rpl32 (nuclear DNA, single-copy, for normalization). Transcript levels were estimated relative to that of Rpl32 by a similar procedure, but using cDNA as template.

Measurements of mitochondrial function

Mitochondrial membrane potential, ROS level, and content per cell were determined by flow cytometry (Cannino *et al*, 2012) of cells stained, respectively, with 200 mM tetramethylrhodamine methyl ester (TMRM), 2.5 μ M MitoSoxTM (Invitrogen), or either 200 nM 10-nonyl acridine orange (NAO) or 40 nM MitoTracker Green FM (Life Technologies). Oxygen consumption of living cells (Cannino *et al*, 2012) was measured using a Clark-type electrode (Hansatech Oxyterm system).

Analyses of lysosomal and mitochondrial content

Lysosome content per cell was measured by flow cytometry of cells stained with 50 nM LysoTracker Red DND-99 (Life Technologies). MitoTracker Green FM (Molecular Probes) and LysoTracker Red DND-99 were used for live cell imaging by confocal microscopy of mitochondria and lysosomes, respectively, with spot-area calculation (ImageJ) and image deconvolution (SVI, Huygens software).

Western blotting

Post-nuclear extracts resolved by SDS-PAGE were electroblotted and probed using standard methods (essentially as Fernandez-Ayala *et al*, 2009; see SI). Primary antibodies used were against NDUFS3 (Abcam, mouse), 1:10,000, ATP5A (Abcam, mouse), 1:1,000, and GAPDH (Everest Biotech, goat), 1:2,000, with appropriate horseradish peroxidase-conjugated secondary antibodies. Visualization

used the ECL system (Amersham Biosciences) according to the manufacturer's protocols.

Statistical analyses

Comparisons between populations were performed using unpaired two-tailed Student's *t*-tests or analyses of variance when more than two samples were compared, with Bonferroni-corrected post hoc *t*-test.

For further details, see Supplementary Materials and Methods.

Data availability

Original images from the primary screen are deposited at: <http://dx.doi.org/10.5061/dryad.v55p5>.

Supplementary information for this article is available online: <http://msb.embopress.org>

Acknowledgements

This work was supported by funding from the Academy of Finland, Tampere University Hospital Medical Research Fund, and the Sigrid Juselius Foundation. AF was supported by FY 2008 Researcher Exchange Program between JSPS and Academy of Finland. We thank Tea Tuomela, Outi Kurronen, Hanna Ojala, and Eveliina Kaulio for technical assistance, and Susanna Valanne, Mika Rämetsä, Ian Holt, Cory Dunn, Brendan Battersby, Anu Suomalainen, and Laurie Kaguni for useful discussions and advice.

Author contributions

AF initiated the project, conducted the primary screen, and supervised the implementation and interpretation of the secondary screening. GC conducted the functional analysis of ATP synthase knockdown. MG performed the copy number analysis and profiled the expression of mitochondrial proteases and opa1-like at the RNA level. SB and SK assisted technically with copy number analysis. EL and AR devised the computational tool for objectifying the PicoGreen fluorescence signals (details to be published elsewhere). FS generated the AOX-expressing S2 cells. ED provided guidance and input for ATP synthase experiments. HTJ devised the project, analyzed the data, compiled the figures and tables, and wrote the text.

Conflict of interest

The authors declare that they have no conflict of interest.

References

- Alexeyev M, Shokolenko I, Wilson G, LeDoux S (2013) The maintenance of mitochondrial DNA integrity—critical analysis and update. *Cold Spring Harb Perspect Biol* 5: a012641
- Ashley N, Harris D, Poulton J (2005) Detection of mitochondrial DNA depletion in living human cells using PicoGreen staining. *Exp Cell Res* 303: 432–446
- Baltzer C, Tiefenböck SK, Marti M, Frei C (2009) Nutrition controls mitochondrial biogenesis in the *Drosophila* adipose tissue through Delg and cyclin D/Cdk4. *PLoS ONE* 4: e6935
- Baracca A, Sgarbi G, Mattiazzi M, Casalena G, Pagnotta E, Valentino ML, Moggio M, Lenaz G, Carelli V, Solaini G (2007) Biochemical phenotypes associated with the mitochondrial ATP6 gene mutations at nt8993. *Biochim Biophys Acta* 1767: 913–919
- Bertolin G, Ferrando-Miguel R, Jacoupy M, Traver S, Grenier K, Greene AW, Dauphin A, Waharte F, Bayot A, Salamero J, Lombès A, Bulteau AL, Fon EA, Brice A, Corti O (2013) The TOMM machinery is a molecular switch in PINK1 and PARK2/PARKIN-dependent mitochondrial clearance. *Autophagy* 9: 1801–1817
- Bogenhagen DF (2012) Mitochondrial DNA nucleoid structure. *Biochim Biophys Acta* 1819: 914–920
- Bonnen PE, Yarham JW, Besse A, Wu P, Faqieh EA, Al-Asmari AM, Saleh MA, Eyaid W, Hadeel A, He L, Smith F, Yau S, Simcox EM, Miwa S, Donti T, Abu-Amero KK, Wong LJ, Craigen WJ, Graham BH, Scott KL et al (2013) Mutations in FBXL4 cause mitochondrial encephalopathy and a disorder of mitochondrial DNA maintenance. *Am J Hum Genet* 93: 471–481
- Boutros M, Kiger AA, Armknecht S, Kerr K, Hild M, Koch B, Haas SA, Paro R, Perrimon N; Heidelberg Fly Array Consortium (2004) Genome-wide RNAi analysis of growth and viability in *Drosophila* cells. *Science* 303: 832–835
- Bozza WP, Zhuang Z (2011) Biochemical characterization of a multidomain deubiquitinating enzyme Ubp15 and the regulatory role of its terminal domains. *Biochemistry* 50: 6423–6432
- Bratic A, Larsson NG (2013) The role of mitochondria in aging. *J Clin Invest* 123: 951–957
- Bruni F, Gramegna P, Oliveira JM, Lightowlers RN, Chrzanowska-Lightowlers ZM (2013) REXO2 is an oligoribonuclease active in human mitochondria. *PLoS ONE* 8: e64670
- Burgers PM, Stith CM, Yoder BL, Sparks JL (2010) Yeast exonuclease 5 is essential for mitochondrial genome maintenance. *Mol Cell Biol* 30: 1457–1466
- Campbell CT, Kolesar JE, Kaufman BA (2012) Mitochondrial transcription factor A regulates mitochondrial transcription initiation, DNA packaging, and genome copy number. *Biochim Biophys Acta* 1819: 921–929
- Cannino G, El-Khoury R, Pirinen M, Hutz B, Rustin P, Jacobs HT, Dufour E (2012) Glucose modulates respiratory complex I activity in response to acute mitochondrial dysfunction. *J Biol Chem* 287: 38729–38740
- Carter R, Drouin G (2010) The increase in the number of subunits in eukaryotic RNA polymerase III relative to RNA polymerase II is due to the permanent recruitment of general transcription factors. *Mol Biol Evol* 27: 1035–1043
- Celardo I, Martins LM, Gandhi S (2014) Unravelling mitochondrial pathways to Parkinson's disease. *Br J Pharmacol* 171: 1943–1957
- Cerritelli SM, Frolova EG, Feng C, Grinberg A, Love PE, Crouch RJ (2003) Failure to produce mitochondrial DNA results in embryonic lethality in Rnaseh1 null mice. *Mol Cell* 11: 807–815
- Chen TC, Hung YC, Lin TY, Chang HW, Chiang IP, Chen YY, Chow KC (2011) Human papillomavirus infection and expression of ATPase family AAA domain containing 3A, a novel anti-autophagy factor, in uterine cervical cancer. *Int J Mol Med* 28: 689–696
- Chen YJ, Stevens TH (1996) The VPS8 gene is required for localization and trafficking of the CPY sorting receptor in *Saccharomyces cerevisiae*. *Eur J Cell Biol* 70: 289–297
- Chujo T, Ohira T, Sakaguchi Y, Goshima N, Nomura N, Nagao A, Suzuki T (2012) LRPPRC/SLIRP suppresses PNPase-mediated mRNA decay and promotes polyadenylation in human mitochondria. *Nucleic Acids Res* 40: 8033–8047
- Ciesielski GL, Plotka M, Manicki M, Schilke BA, Dutkiewicz R, Sahi C, Marszalek J, Craig EA (2013) Nucleoid localization of Hsp40 Mdj1 is important for its function in maintenance of mitochondrial DNA. *Biochim Biophys Acta* 1833: 2233–2243

- Clark-Walker GD, Hansbro PM, Gibson F, Chen XJ (2000) Mutant residues suppressing rho(0)-lethality in *Kluyveromyces lactis* occur at contact sites between subunits of F1-ATPase. *Biochim Biophys Acta* 1478: 125–137
- Clayton DA (1982) Replication of animal mitochondrial DNA. *Cell* 28: 693–705
- Clemens JC, Worby CA, Simonson-Leff N, Muda M, Maehama T, Hemmings BA, Dixon JE (2000) Use of double-stranded RNA interference in *Drosophila* cell lines to dissect signal transduction pathways. *Proc Natl Acad Sci USA* 97: 6499–6503
- Cohen MM, Lebouche GP, Livnat-Levanon N, Glickman MH, Weissman AM (2008) Ubiquitin-Proteasome-dependent degradation of a mitofusin, a critical regulator of mitochondrial fusion. *Mol Biol Cell* 19: 2457–2464
- Contamine V, Picard M (2000) Maintenance and integrity of the mitochondrial genome: a plethora of nuclear genes in the budding yeast. *Microbiol Mol Biol Rev* 64: 281–315
- Copeland WC (2012) Defects in mitochondrial DNA replication and human disease. *Crit Rev Biochem Mol Biol* 47: 64–74
- Cramer P, Armache KJ, Baumli S, Benkert F, Brueckner F, Buchen C, Damsma GE, Dengl S, Geiger SR, Jasiak AJ, Jawhari A, Jennebach S, Kaminski T, Kettenberger H, Kuhn CD, Lehmann E, Leike K, Sydow JF, Vannini A (2008) Structure of eukaryotic RNA polymerases. *Annu Rev Biophys* 37: 337–352
- Dai DF, Chen T, Wanagat J, Laflamme M, Marcinek DJ, Emond MJ, Ngo CP, Prolla TA, Rabinovitch PS (2010) Age-dependent cardiomyopathy in mitochondrial mutator mice is attenuated by overexpression of catalase targeted to mitochondria. *Aging Cell* 9: 536–544
- Dascher C, Balch WE (1996) Mammalian Sly1 regulates syntaxin 5 function in endoplasmic reticulum to Golgi transport. *J Biol Chem* 271: 15866–15869
- Dascher C, Ossig R, Gallwitz D, Schmitt HD (1991) Identification and structure of four yeast genes (SLY) that are able to suppress the functional loss of YPT1, a member of the RAS superfamily. *Mol Cell Biol* 11: 872–885
- Davies KM, Anselmi C, Wittig I, Faraldo-Gómez JD, Kühlbrandt W (2012) Structure of the yeast F1Fo-ATP synthase dimer and its role in shaping the mitochondrial cristae. *Proc Natl Acad Sci USA* 109: 13602–13607
- Debely MO, Platta HW, Saffian D, Hensel A, Thoms S, Meyer HE, Warscheid B, Girzalsky W, Erdmann R (2011) Ubp15p, a ubiquitin hydrolase associated with the peroxisomal export machinery. *J Biol Chem* 286: 28223–28234
- Dong Z, Bell LR (1999) SIN, a novel *Drosophila* protein that associates with the RNA binding protein sex-lethal. *Gene* 237: 421–428
- Dunn CD, Jensen RE (2003) Suppression of a defect in mitochondrial protein import identifies cytosolic proteins required for viability of yeast cells lacking mitochondrial DNA. *Genetics* 165: 35–45
- Duvezin-Caubet S, Rak M, Lefebvre-Legendre L, Tetaud E, Bonnefoy N, di Rago JP (2006) A “petite obligate” mutant of *Saccharomyces cerevisiae*: functional mtDNA is lethal in cells lacking the delta subunit of mitochondrial F1-ATPase. *J Biol Chem* 281: 16305–16313
- Duxin JP, Dao B, Martinsson P, Rajala N, Guittat L, Campbell JL, Spelbrink JN, Stewart SA (2009) Human Dna2 is a nuclear and mitochondrial DNA maintenance protein. *Mol Cell Biol* 29: 4274–4282
- Ehse S, Raschke I, Mancuso G, Bernacchia A, Geimer S, Tondera D, Martinou JC, Westermann B, Rugarli EI, Langer T (2009) Regulation of OPA1 processing and mitochondrial fusion by m-AAA protease isoenzymes and OMA1. *J Cell Biol* 187: 1023–1036
- Elachouri G, Vidoni S, Zanna C, Pattyn A, Boukhaddaoui H, Gaget K, Yu-Wai-Man P, Gasparre G, Sarzi E, Delettre C, Olichon A, Loiseau D, Reynier P, Chinnery PF, Rotig A, Carelli V, Hamel CP, Rugolo M, Lenaers G (2011) OPA1 links human mitochondrial genome maintenance to mtDNA replication and distribution. *Genome Res* 21: 12–20
- Faulkner KM, Liochev SI, Fridovich I (1994) Stable Mn(III) porphyrins mimic superoxide dismutase *in vitro* and substitute for it *in vivo*. *J Biol Chem* 269: 23471–23476
- Fernandez-Ayala DJ, Sanz A, Vartiainen S, Kemppainen KK, Babusiak M, Mustalahti E, Costa R, Tuomela T, Zeviani M, Chung J, O’Dell KM, Rustin P, Jacobs HT (2009) Expression of the *Ciona intestinalis* alternative oxidase (AOX) in *Drosophila* complements defects in mitochondrial oxidative phosphorylation. *Cell Metab* 9: 449–460
- Frezza C, Cipolat S, Martins de Brito O, Micaroni M, Beznoussenko GV, Rudka T, Bartoli D, Polishuck RS, Danial NN, De Strooper B, Scorrano L (2006) OPA1 controls apoptotic cristae remodeling independently from mitochondrial fusion. *Cell* 126: 177–189
- Fuste JM, Wanrooij S, Jemt E, Granycome CE, Cluett TJ, Shi Y, Atanassova N, Holt IJ, Gustafsson CM, Falkenberg M (2010) Mitochondrial RNA polymerase is needed for activation of the origin of light-strand DNA replication. *Mol Cell* 37: 67–78
- Gao Y, Katyal S, Lee Y, Zhao J, Reh JE, Russell HR, McKinnon PJ (2011) DNA ligase III is critical for mtDNA integrity but not Xrcc1-mediated nuclear DNA repair. *Nature* 471: 240–244
- García-Gómez S, Reyes A, Martínez-Jiménez MI, Chocrón ES, Mourón S, Terrados G, Powell C, Salido E, Méndez J, Holt IJ, Blanco L (2013) PrimPol, an archaic primase/polymerase operating in human cells. *Mol Cell* 52: 541–553
- Gilquin B, Taillebourg E, Cherradi N, Hubstenberger A, Gay O, Merle N, Assard N, Fauvarque MO, Tomohiro S, Kuge O, Baudier J (2010) The AAA+ ATPase ATAD3A controls mitochondrial dynamics at the interface of the inner and outer membranes. *Mol Cell Biol* 30: 1984–1996
- Giraud MF, Velours J (1997) The absence of the mitochondrial ATP synthase delta subunit promotes a slow growth phenotype of rho- yeast cells by a lack of assembly of the catalytic sector F1. *Eur J Biochem* 245: 813–818
- Gomes AP, Price NL, Ling AJ, Moslehi JJ, Montgomery MK, Rajman L, White JP, Teodoro JS, Wrann CD, Hubbard BP, Mercken EM, Palmeira CM, de Cabo R, Rolo AP, Turner N, Bell EL, Sinclair DA (2013) Declining NAD(+) induces a pseudohypoxic state disrupting nuclear-mitochondrial communication during aging. *Cell* 155: 1624–1638
- Goto A, Matsushima Y, Kadowaki T, Kitagawa Y (2001) *Drosophila* mitochondrial transcription factor A (d-TFAM) is dispensable for the transcription of mitochondrial DNA in Kc167 cells. *Biochem J* 354: 243–248
- Guan X, Middlebrooks BW, Alexander S, Wasserman SA (2006) Mutation of TweedleD, a member of an unconventional cuticle protein family, alters body shape in *Drosophila*. *Proc Natl Acad Sci USA* 103: 16794–16799
- Han Y, Chen JZ (2013) Oxidative stress induces mitochondrial DNA damage and cytotoxicity through independent mechanisms in human cancer cells. *Biomed Res Int* 2013: 825065
- Hay JC, Chao DS, Kuo CS, Scheller RH (1997) Protein interactions regulating vesicle transport between the endoplasmic reticulum and Golgi apparatus in mammalian cells. *Cell* 89: 149–158
- He J, Cooper HM, Reyes A, Di Re M, Sembongi H, Litwin TR, Gao J, Neuman KC, Fearnley IM, Spinazzola A, Walker JE, Holt IJ (2012) Mitochondrial nucleoid interacting proteins support mitochondrial protein synthesis. *Nucleic Acids Res* 40: 6109–6121
- He J, Mao CC, Reyes A, Sembongi H, Di Re M, Granycome C, Clippingdale AB, Fearnley IM, Harbour M, Robinson AJ, Reichelt S, Spelbrink JN, Walker JE, Holt IJ (2007) The AAA+ protein ATAD3 has displacement loop binding properties and is involved in mitochondrial nucleoid organization. *J Cell Biol* 176: 141–146
- Hensen F, Cansiz S, Gerhold JM, Spelbrink JN (2014) To be or not to be a nucleoid protein: a comparison of mass-spectrometry based approaches in

- the identification of potential mtDNA-nucleoid associated proteins. *Biochimie* 100: 219–226
- Heo JM, Livnat-Levanon N, Taylor EB, Jones KT, Dephoure N, Ring J, Xie J, Brodsky JL, Madeo F, Gygi SP, Ashrafi K, Glickman MH, Rutter J (2010) A stress-responsive system for mitochondrial protein degradation. *Mol Cell* 40: 465–480
- Herlan M, Vogel F, Bornhovd C, Neupert W, Reichert AS (2003) Processing of Mgm1 by the rhomboid-type protease Pcp1 is required for maintenance of mitochondrial morphology and of mitochondrial DNA. *J Biol Chem* 278: 27781–27788
- Hoffmann M, Honnen S, Mayatepek E, Wätjen W, Koopman WJ, Bossinger O, Distelmaier F (2012) MICS-1 interacts with mitochondrial ATAD-3 and modulates lifespan in *C. elegans*. *Exp Gerontol* 47: 270–275
- Horazdovsky BF, Cowles CR, Mustol P, Holmes M, Emr SD (1996) A novel RING finger protein, Vps8p, functionally interacts with the small GTPase, Vps21p, to facilitate soluble vacuolar protein localization. *J Biol Chem* 271: 33607–33615
- Hou D, Ruiz M, Andriulis ED (2012) The ribonuclease Dis3 is an essential regulator of the developmental transcriptome. *BMC Genomics* 13: 359
- Houtkooper RH, Mouchiroud L, Ryu D, Moullan N, Katsyuba E, Knott G, Williams RW, Auwerx J (2013) Mitonuclear protein imbalance as a conserved longevity mechanism. *Nature* 497: 451–457
- Hu P, Wu S, Sun Y, Yuan CC, Kobayashi R, Myers MP, Hernandez N (2002) Characterization of human RNA polymerase III identifies orthologues for *Saccharomyces cerevisiae* RNA polymerase III subunits. *Mol Cell Biol* 22: 8044–8055
- Huang KH, Chow KC, Chang HW, Lin TY, Lee MC (2011) ATPase family AAA domain containing 3A is an anti-apoptotic factor and a secretion regulator of PSA in prostate cancer. *Int J Mol Med* 28: 9–15
- Humphrey DM, Parsons RB, Ludlow ZN, Riemensperger T, Esposito G, Verstrecken P, Jacobs HT, Birman S, Hirth F (2012) Alternative oxidase rescues mitochondria-mediated dopaminergic cell loss in *Drosophila*. *Hum Mol Genet* 21: 2698–2712
- Hwang GW, Kimura Y, Takahashi T, Lee JY, Naganuma A (2012) Identification of deubiquitinating enzymes involved in methylmercury toxicity in *Saccharomyces cerevisiae*. *J Toxicol Sci* 37: 1287–1290
- Ito JK, Braithwaite DK (1991) Compilation and alignment of DNA polymerase sequences. *Nucleic Acids Res* 19: 4045–4057
- Iyengar B, Luo N, Farr CL, Kaguni LS, Campos AR (2002) The accessory subunit of DNA polymerase gamma is essential for mitochondrial DNA maintenance and development in *Drosophila melanogaster*. *Proc Natl Acad Sci USA* 99: 4483–4488
- Jöers P, Lewis SC, Fukuoh A, Parhiala M, Ellilä S, Holt IJ, Jacobs HT (2013) Mitochondrial transcription terminator family members mTTF and mTerf5 have opposing roles in coordination of mtDNA synthesis. *PLoS Genet* 9: e1003800
- Johnson ML, Nagengast AA, Salz HK (2010) PPS, a large multidomain protein, functions with sex-lethal to regulate alternative splicing in *Drosophila*. *PLoS Genet* 6: e1000872
- Jones BA, Fangman WL (1992) Mitochondrial DNA maintenance in yeast requires a protein containing a region related to the GTP-binding domain of dynamin. *Genes Dev* 6: 380–389
- Joseph AM, Adhichetty PJ, Buford TW, Wohlgemuth SE, Lees HA, Nguyen LM, Aranda JM, Sandesara BD, Pahor M, Manini TM, Marzetti E, Leeuwenburgh C (2012) The impact of aging on mitochondrial function and biogenesis pathways in skeletal muscle of sedentary high- and low-functioning elderly individuals. *Aging Cell* 11: 801–809
- Kaguni LS (2004) DNA polymerase gamma, the mitochondrial replicase. *Annu Rev Biochem* 73: 293–320
- Kang D, Hamasaki N (2005) Mitochondrial transcription factor A in the maintenance of mitochondrial DNA: overview of its multiple roles. *Ann NY Acad Sci* 1042: 101–108
- Kanga S, Bernard D, Mager-Heckel AM, Erpapazoglou Z, Mattioli F, Sixma TK, Léon S, Urban-Grimal D, Tarassov I, Haguenaer-Tsapis R (2012) A deubiquitylating complex required for neosynthesis of a yeast mitochondrial ATP synthase subunit. *PLoS ONE* 7: e38071
- Karniely S, Pines O (2005) Single translation–dual destination: mechanisms of dual protein targeting in eukaryotes. *EMBO Rep* 6: 420–425
- Kassavetis GA, Prakash P, Shim E (2010) The C53/C37 subcomplex of RNA polymerase III lies near the active site and participates in promoter opening. *J Biol Chem* 285: 2695–2706
- Kazak L, Reyes A, He J, Wood SR, Brea-Calvo G, Holen TT, Holt IJ (2013) A cryptic targeting signal creates a mitochondrial FEN1 isoform with tailed R-Loop binding properties. *PLoS ONE* 8: e62340
- Klaes A, Menne T, Stollewerk A, Scholz H, Klämbt C (1994) The Ets transcription factors encoded by the *Drosophila* gene *pointed* direct glial cell differentiation in the embryonic CNS. *Cell* 78: 149–160
- Kleino A, Valanne S, Ulvila J, Kallio J, Myllymäki H, Enwald H, Stöven S, Poidevin M, Ueda R, Hultmark D, Lemaitre B, Rättem M (2005) Inhibitor of apoptosis 2 and TAK1-binding protein are components of the *Drosophila* *lmd* pathway. *EMBO J* 24: 3423–3434
- Koonin EV, Deutscher MP (1993) RNase T shares conserved sequence motifs with DNA proofreading exonucleases. *Nucleic Acids Res* 21: 2521–2522
- Kornblum C, Nicholls TJ, Haack TB, Schöler S, Peeva V, Danhauser K, Hallmann K, Zsurka G, Rorbach J, Iuso A, Wieland T, Sciacco M, Ronchi D, Comi GP, Moggio M, Quinzii CM, DiMauro S, Calvo SE, Mootha VK, Klopstock T et al (2013) Loss-of-function mutations in MGME1 impair mtDNA replication and cause multisystemic mitochondrial disease. *Nat Genet* 45: 214–219
- Kushnareva YE, Gerencser AA, Bossy B, Ju WK, White AD, Waggoner J, Ellisman MH, Perkins G, Bossy-Wetzal E (2013) Loss of OPA1 disturbs cellular calcium homeostasis and sensitizes for excitotoxicity. *Cell Death Differ* 20: 353–365
- Lai-Zhang J, Xiao Y, Mueller DM (1999) Epistatic interactions of deletion mutants in the genes encoding the F1-ATPase in yeast *Saccharomyces cerevisiae*. *EMBO J* 18: 58–64
- Landrieux E, Alic N, Ducrot C, Acker J, Riva M, Carles C (2006) A subcomplex of RNA polymerase III subunits involved in transcription termination and reinitiation. *EMBO J* 25: 118–128
- Larosche I, Lettéron P, Berson A, Fromenty B, Huang TT, Moreau R, Pessayre D, Mansouri A (2010) Hepatic mitochondrial DNA depletion after an alcohol binge in mice: probable role of peroxynitrite and modulation by manganese superoxide dismutase. *J Pharmacol Exp Ther* 332: 886–897
- Larsson NG, Wang J, Wilhelmsson H, Oldfors A, Rustin P, Lewandoski M, Barsh GS, Clayton DA (1998) Mitochondrial transcription factor A is necessary for mtDNA maintenance and embryogenesis in mice. *Nat Genet* 18: 231–236
- Lefebvre-Legendre L, Balguerie A, Duvezin-Caubet S, Giraud MF, Slonimski PP, Di Rago JP (2003) F1-catalysed ATP hydrolysis is required for mitochondrial biogenesis in *Saccharomyces cerevisiae* growing under conditions where it cannot respire. *Mol Microbiol* 47: 1329–1339
- Lui TT, Lacroix C, Ahmed SM, Goldenberg SJ, Leach CA, Daulat AM, Angers S (2011) The ubiquitin-specific protease USP34 regulates axin stability and Wnt/β-catenin signaling. *Mol Cell Biol* 31: 2053–2065

- Maier D, Farr CL, Poeck B, Alahari A, Vogel M, Fischer S, Kaguni LS, Schneuwly S (2001) Mitochondrial single-stranded DNA-binding protein is required for mitochondrial DNA replication and development in *Drosophila melanogaster*. *Mol Biol Cell* 12: 821–830
- Malc E, Dzierzbicki P, Kaniak A, Skoneczna A, Ciesla Z (2009) Inactivation of the 20S proteasome maturase, Ump1p, leads to the instability of mtDNA in *Saccharomyces cerevisiae*. *Mutat Res* 669: 95–103
- Mamolen MC (2010) *Drosophila melanogaster* Dis 3 is dynamic endo- and 3'-5' exoribonuclease. PhD thesis, Case Western Reserve University; permalink http://rave.ohiolink.edu/etdc/view?acc_num=case1278525341
- Margineantu DH, Emerson CB, Diaz D, Hockenbery DM (2007) Hsp90 inhibition decreases mitochondrial protein turnover. *PLoS ONE* 2: e1066
- Martinelli P, Rugarli EI (2007) Emerging roles of mitochondrial proteases in neurodegeneration. *Biochim Biophys Acta* 1797: 1–10
- Matsushima Y, Garesse R, Kaguni LS (2004) *Drosophila* mitochondrial transcription factor B2 regulates mitochondrial DNA copy number and transcription in Schneider cells. *J Biol Chem* 279: 26900–26905
- Matsushima Y, Goto Y, Kaguni LS (2010) Mitochondrial Lon protease regulates mitochondrial DNA copy number and transcription by selective degradation of mitochondrial transcription factor A (TFAM). *Proc Natl Acad Sci USA* 107: 18410–18415
- McDermott-Roe C, Ye J, Ahmed R, Sun XM, Serafini A, Ware J, Bottolo L, Muckett P, Cañas X, Zhang J, Rowe GC, Buchan R, Lu H, Braithwaite A, Mancini M, Hauton D, Martí R, García-Arumí E, Hubner N, Jacob H et al (2011) Endonuclease G is a novel determinant of cardiac hypertrophy and mitochondrial function. *Nature* 478: 114–118
- McKinney EA, Oliveira MT (2013) Replicating animal mitochondrial DNA. *Genet Mol Biol* 36: 308–315
- McLelland GL, Soubannier V, Chen CX, McBride HM, Fon EA (2014) Parkin and PINK1 function in a vesicular trafficking pathway regulating mitochondrial quality control. *EMBO J* 33: 282–295
- Meeusen S, DeVay R, Block J, Cassidy-Stone A, Wayson S, McCaffery JM, Nunnari J (2006) Mitochondrial inner-membrane fusion and crista maintenance requires the dynamin-related GTPase Mgm1. *Cell* 127: 383–395
- Moreno-Loshuertos R, Acín-Pérez R, Fernández-Silva P, Movilla N, Pérez-Martos A, Rodríguez de Córdoba S, Gallardo ME, Enríquez JA (2006) Differences in reactive oxygen species production explain the phenotypes associated with common mouse mitochondrial DNA variants. *Nat Genet* 38: 1261–1268
- Moreno-Loshuertos R, Ferrín G, Acín-Pérez R, Gallardo ME, Viscomi C, Pérez-Martos A, Zeviani M, Fernández-Silva P, Enríquez JA (2011) Evolution meets disease: penetrance and functional epistasis of mitochondrial tRNA mutations. *PLoS Genet* 7: e1001379
- Morimoto AM, Jordan KC, Tietze K, Britton JS, O'Neill EM, Ruohola-Baker H (1996) Pointed, an ETS domain transcription factor, negatively regulates the EGF receptor pathway in *Drosophila* oogenesis. *Development* 122: 3745–3754
- Nagakawa Y, Williams GM, Zheng Q, Tsuchida A, Aoki T, Montgomery RA, Klein AS, Sun Z (2005) Oxidative mitochondrial DNA damage and deletion in hepatocytes of rejecting liver allografts in rats: role of TNF- α . *Hepatology* 42: 208–215
- Narendra D, Walker JE, Youle R (2012) Mitochondrial quality control mediated by PINK1 and Parkin: links to parkinsonism. *Cold Spring Harb Perspect Biol* 4: pii: a011338.
- Neufeld TP (2012) Autophagy and cell growth – the yin and yang of nutrient responses. *J Cell Sci* 125: 1–10
- Newman AP, Shim J, Ferro-Novick S (1990) BET1, BOS1, and SEC22 are members of a group of interacting yeast genes required for transport from the endoplasmic reticulum to the Golgi complex. *Mol Cell Biol* 10: 3405–3414
- Oliveira MT, Garesse R, Kaguni LS (2010) Animal models of mitochondrial DNA transactions in disease and ageing. *Exp Gerontol* 45: 489–502
- Poalas K, Hatchi EM, Cordeiro N, Dubois SM, Leclair HM, Leveau C, Alexia C, Gavard J, Vazquez A, Bidère N (2013) Negative regulation of NF- κ B signaling in T lymphocytes by the ubiquitin-specific protease USP34. *Cell Commun Signal* 11: 25
- Puebla-Osorio N, Lacey DB, Alt FW, Zhu C (2006) Early embryonic lethality due to targeted inactivation of DNA ligase III. *Mol Cell Biol* 26: 3935–3941
- Quinzii CM, Garone C, Emmanuele V, Tadesse S, Krishna S, Dorado B, Hirano M (2013) Tissue-specific oxidative stress and loss of mitochondria in CoQ-deficient Pdss2 mutant mice. *FASEB J* 27: 612–621
- Rahman M, Kylsten P (2011) Rhomboid-7 over-expression results in Opa1-like processing and malfunctioning mitochondria. *Biochem Biophys Res Commun* 414: 315–320
- Rämet M, Manfruellli P, Pearson A, Mathey-Prevot B, Ezekowitz RA (2002) Functional genomic analysis of phagocytosis and identification of a *Drosophila* receptor for *E. coli*. *Nature* 416: 644–648
- Ranieri M, Brajkovic S, Riboldi G, Ronchi D, Rizzo F, Bresolin N, Corti S, Comi GP (2013) Mitochondrial fusion proteins and human diseases. *Neurol Res Int* 2013: 293893
- Reyes A, He J, Mao CC, Bailey LJ, Di Re M, Sembongi H, Kazak L, Dzionek K, Holmes JB, Cluett TJ, Harbour ME, Fearnley IM, Crouch RJ, Conti MA, Adelstein RS, Walker JE, Holt IJ (2011) Actin and myosin contribute to mammalian mitochondrial DNA maintenance. *Nucleic Acids Res* 39: 5098–5108
- Richter U, Lahtinen T, Marttinen P, Myöhänen M, Greco D, Cannino G, Jacobs HT, Lietzén N, Nyman TA, Battersby BJ (2013) A mitochondrial ribosomal and RNA decay pathway blocks cell proliferation. *Curr Biol* 23: 535–541
- Roberti M, Bruni F, Polosa PL, Gadaleta MN, Cantatore P (2006) The *Drosophila* termination factor DmTTF regulates *in vivo* mitochondrial transcription. *Nucleic Acids Res* 34: 2109–2116
- Robinson BH, Petrova-Benedict R, Buncic JR, Wallace DC (1992) Nonviability of cells with oxidative defects in galactose medium: a screening test for affected patient fibroblasts. *Biochem Med Metab Biol* 48: 122–126
- Rone MB, Midzak AS, Issop L, Rammouz G, Jagannathan S, Fan J, Ye X, Blonder J, Veenstra T, Papadopoulos V (2012) Identification of a dynamic mitochondrial protein complex driving cholesterol import, trafficking, and metabolism to steroid hormones. *Mol Endocrinol* 26: 1868–1882
- Rötig A, Poulton J (2009) Genetic causes of mitochondrial DNA depletion in humans. *Biochim Biophys Acta* 1792: 1103–1108
- Ruhanen H, Ushakov K, Yasukawa T (2011) Involvement of DNA ligase III and ribonuclease H1 in mitochondrial DNA replication in cultured human cells. *Biochim Biophys Acta* 1813: 2000–2007
- Saada A (2004) Deoxyribonucleotides and disorders of mitochondrial DNA integrity. *DNA Cell Biol* 23: 797–806
- Sarig O, Goldsher D, Nousebeck J, Fuchs-Telem D, Cohen-Katsenelson K, Iancu TC, Manov I, Saada A, Sprecher E, Mandel H (2013) Infantile mitochondrial hepatopathy is a cardinal feature of MEGDEL syndrome (3-methylglutaconic aciduria type IV with sensorineural deafness, encephalopathy and Leigh-like syndrome) caused by novel mutations in SERAC1. *Am J Med Genet A* 161: 2204–2215
- Sasarman F, Brunel-Guitton C, Antonicka H, Wai T, Shoubridge EA; LSFC Consortium (2010) LRPPRC and SLIRP interact in a ribonucleoprotein complex that regulates posttranscriptional gene expression in mitochondria. *Mol Biol Cell* 21: 1315–1323

- Schmidt O, Harbauer AB, Rao S, Eyrich B, Zahedi RP, Stojanovski D, Schönfisch B, Guiard B, Sickmann A, Pfanner N, Meisinger C (2011) Regulation of mitochondrial protein import by cytosolic kinases. *Cell* 144: 227–239
- Schnauffer A, Clark-Walker GD, Steinberg AG, Stuart K (2005) The F1-ATP synthase complex in bloodstream stage trypanosomes has an unusual and essential function. *EMBO J* 24: 4029–4040
- Sesaki H, Southard SM, Hobbs AE, Jensen RE (2003) Cells lacking Pcp1p/Ugo2p, a rhomboid-like protease required for Mgm1p processing, lose mtDNA and mitochondrial structure in a Dnm1p-dependent manner, but remain competent for mitochondrial fusion. *Biochem Biophys Res Commun* 308: 276–283
- Shadel GS (2008) Expression and maintenance of mitochondrial DNA: new insights into human disease pathology. *Am J Pathol* 172: 1445–1456
- Shiota T, Mabuchi H, Tanaka-Yamano S, Yamano K, Endo T (2011) *In vivo* protein-interaction mapping of a mitochondrial translocator protein Tom22 at work. *Proc Natl Acad Sci USA* 108: 15179–15183
- Shokolenko IN, Wilson GL, Alexeyev MF (2013) Persistent damage induces mitochondrial DNA degradation. *DNA Repair (Amst)* 12: 488–499
- Sogaard M, Tani K, Ruby YR, Geromanos S, Tempst P, Kirchhausen T, Rothman JE, Sollner T (1994) A rab protein is required for the assembly of SNARE complexes in the docking of transport vesicles. *Cell* 78: 937–946
- Song Z, Chen H, Fiket M, Alexander C, Chan DC (2007) OPA1 processing controls mitochondrial fusion and is regulated by mRNA splicing, membrane potential, and Yme1L. *J Cell Biol* 178: 749–755
- Spelbrink JN, Li FY, Tiranti V, Nikali K, Yuan QP, Tariq M, Wanrooij S, Garrido N, Comi G, Morandi L, Santoro L, Toscano A, Fabrizi GM, Somer H, Croxen R, Beeson D, Poulton J, Suomalainen A, Jacobs HT, Zeviani M et al (2001) Human mitochondrial DNA deletions associated with mutations in the gene encoding Twinkle, a phage T7 gene 4-like protein localized in mitochondria. *Nat Genet* 28: 223–231
- Spelbrink JN (2010) Functional organization of mammalian mitochondrial DNA in nucleoids: history, recent developments, and future challenges. *IUBMB Life* 62: 19–32
- Spinazzola A, Viscomi C, Fernandez-Vizcarra E, Carrara F, D'Adamo P, Calvo S, Marsano RM, Donnini C, Weiher H, Strisciuglio P, Parini R, Sarzi E, Chan A, DiMauro S, Rötig A, Gasparini P, Ferrero I, Mootha VK, Tiranti V, Zeviani M (2006) MPV17 encodes an inner mitochondrial membrane protein and is mutated in infantile hepatic mitochondrial DNA depletion. *Nat Genet* 38: 570–575
- Storrie B, Attardi G (1972) Expression of the mitochondrial genome in HeLa cells. 13. Effect of selective inhibition of cytoplasmic or mitochondrial protein synthesis on mitochondrial nucleic acid synthesis. *J Mol Biol* 71: 177–199
- Suzuki Y, Holmes JB, Cerritelli SM, Sakhuja K, Minczuk M, Holt IJ, Crouch RJ (2010) An upstream open reading frame and the context of the two AUG codons affect the abundance of mitochondrial and nuclear RNase H1. *Mol Cell Biol* 30: 5123–5134
- Sy SM, Jiang J, O WS, Deng Y, Huen MS (2013) The ubiquitin specific protease USP34 promotes ubiquitin signaling at DNA double-strand breaks. *Nucleic Acids Res* 41: 8572–8580
- Symersky J, Osowski D, Walters DE, Mueller DM (2008) Oligomycin frames a common drug-binding site in the ATP synthase. *Proc Natl Acad Sci USA* 109: 13961–13965
- Tamura K, Miyata K, Sugahara K, Onishi S, Shuin T, Aso T (2003) Identification of EloA-BP1, a novel elongin A binding protein with an exonuclease homology domain. *Biochem Biophys Res Commun* 309: 189–195
- Tann AW, Boldogh I, Meiss G, Qian W, Van Houten B, Mitra S, Szczesny B (2011) Apoptosis induced by persistent single-strand breaks in mitochondrial genome: critical role of EXOG (5'-EXO/endonuclease) in their repair. *J Biol Chem* 286: 31975–31983
- Tomecki R, Kristiansen MS, Lykke-Abdersen S, Chlebowski A, Larssen KM, Szczesny RJ, Drzakowska K, Pastula A, Andersen JS, Stepień PP, Dziembowski A, Jensen TH (2010) The human core exosome interacts with differentially localized processive RNases: hDIS3 and hDIS3L. *EMBO J* 29: 2342–2357
- Trifunovic A, Hansson A, Wredenberg A, Rovio AT, Dufour E, Khvorostov I, Spelbrink JN, Wibom R, Jacobs HT, Larsson NG (2005) Somatic mtDNA mutations cause aging phenotypes without affecting reactive oxygen species production. *Proc Natl Acad Sci USA* 102: 17993–17998
- Turner CJ, Granycome C, Hurst R, Pohler E, Juhola MK, Juhola MI, Jacobs HT, Sutherland L, Holt IJ (2005) Systematic segregation to mutant mitochondrial DNA and accompanying loss of mitochondrial DNA in human NT2 teratocarcinoma cybrids. *Genetics* 170: 1879–1885
- Vadrot N, Ghanem S, Braut F, Gavrilescu L, Pilard N, Mansouri A, Moreau R, Reyl-Desmars F (2012) Mitochondrial DNA maintenance is regulated in human hepatoma cells by glycogen synthase kinase 3 β and p53 in response to tumor necrosis factor α . *PLoS ONE* 7: e40879
- Vergani L, Rossi R, Brierley CH, Hanna M, Holt IJ (1999) Introduction of heteroplasmic mitochondrial DNA (mtDNA) from a patient with NARP into two human rho degrees cell lines is associated either with selection and maintenance of NARP mutant mtDNA or failure to maintain mtDNA. *Hum Mol Genet* 8: 1751–1755
- Vielhaber S, Debska-Vielhaber G, Peeva V, Schoeler S, Kudin AP, Minin I, Schreiber S, Dengler R, Kollewe K, Zuschratter W, Kornblum C, Zsurka G, Kunz WS (2013) Mitofusin 2 mutations affect mitochondrial function by mitochondrial DNA depletion. *Acta Neuropathol* 125: 245–256
- Wang Y, Singh U, Mueller DM (2007) Mitochondrial genome integrity mutations uncouple the yeast *Saccharomyces cerevisiae* ATP synthase. *J Biol Chem* 282: 8228–8236
- Wilkinson S, Croft DR, O'Prey J, Meedendorp A, O'Prey M, Dufès C, Ryan KM (2011) The cyclin-dependent kinase PITSLRE/CDK11 is required for successful autophagy. *Autophagy* 7: 1295–1301
- Wojewoda M, Duszyński J, Szczepanowska J (2010) Antioxidant defence systems and generation of reactive oxygen species in osteosarcoma cells with defective mitochondria: effect of selenium. *Biochim Biophys Acta* 1797: 890–896
- Wojewoda M, Duszyński J, Szczepanowska J (2011) NARP mutation and mtDNA depletion trigger mitochondrial biogenesis which can be modulated by selenite supplementation. *Int J Biochem Cell Biol* 43: 1178–1186
- Wong ED, Wagner JA, Gorsich SW, McCaffery JM, Shaw JM, Nunnari J (2000) The dynamin-related GTPase, Mgm1p, is an intermembrane space protein required for maintenance of fusion competent mitochondria. *J Cell Biol* 151: 341–352
- Ylikallio E, Suomalainen A (2012) Mechanisms of mitochondrial diseases. *Ann Med* 44: 41–59
- Yonashiro R, Ishido S, Kyo S, Fukuda T, Goto E, Matsuki Y, Ohmura-Hoshino M, Sada K, Hotta H, Yamamura H, Inatome R, Yanagi S (2006) A novel mitochondrial ubiquitin ligase plays a critical role in mitochondrial dynamics. *EMBO J* 25: 3618–3626



License: This is an open access article under the terms of the Creative Commons Attribution 4.0 License, which permits use, distribution and reproduction in any medium, provided the original work is properly cited.