

Original Article

Detailed cross-sectional study of 60 superficial femoral artery occlusions: morphological quantitative analysis can lead to a new classification

Mickaël Ohana¹, Soraya El Ghannudi¹, Elie Girsowicz², Anne Lejay², Yannick Georg², Fabien Thaveau², Nabil Chakfe², Catherine Roy¹

¹Radiology Department, ²Vascular Surgery Department, Nouvel Hôpital Civil-Strasbourg University Hospital, 1 place de l'Hôpital, 67000 Strasbourg, France

Correspondence to: Dr. Mickaël Ohana, MD, MSc. Radiology Department, Nouvel Hôpital Civil-Strasbourg University Hospital, 1 place de l'Hôpital, 67000 Strasbourg, France. Email: mickaël.ohana@gmail.com.

Objective: Current clinical classification of superficial femoral artery (SFA) occlusions as defined by TASC II guidelines is limited to length and calcifications analysis on 2D angiograms, while state-of-the-art cross-sectional imaging like computed tomography angiography (CTA) and magnetic resonance angiography (MRA) provides much more detailed anatomical information than traditional invasive angiography: quantitative morphological analysis of these advanced imaging techniques could therefore be the basis of a refined classification.

Methods and results: Forty-six patients (65% men, 68±11.6 years) that underwent lower limb CTA were retrospectively included, totalizing 60 SFA occlusions. Lesions were classified as TASC II stage A in 3% of cases, stage B in 20%, stage C in 2% and stage D in 75%. For each pathological artery, curved multiplanar reconstructions following the occluded SFA course were used to measure the total length and the mean diameter of the occluded segment. Color-coded map provided an accurate estimation of calcifications' volume. Thirty-nine percent of the occlusions were total. Mean occluded segment length was 219±107 mm (range, 14-530 mm); mean occluded segment diameter was 6.1±1.6 mm (range, 3.4-10 mm); mean calcifications' volume in the occluded segment was 1,265±1,893 mm³ (range, 0-8,815 mm³), corresponding to a percentage of 17.4%±20% (range, 0-88.7%). Shrunken occluded occlusions were defined by a mean diameter under 5 mm and heavily calcified occlusions by a mean percentage of calcifications above 4%. Use of these thresholds allowed the distinction of four groups of patients: heavily calcified occlusions with preserved caliber (56%), non-calcified occlusions with preserved caliber (19%), non-calcified occlusions with small caliber (15%) and heavily calcified occlusions with small caliber (10%).

Conclusions: SFA occlusions are disparate: this simple morphological study points out TASC II classification weaknesses for SFA occlusions, as quantitative cross-sectional imaging analysis with measurement of mean occluded diameter and percentage of calcifications can refine it. This could be particularly useful in the management of TASC II type D lesions, for which new endovascular revascularization techniques are arising, and where a CTA or MRA-based morphological classification could provide support in choosing between them.

Keywords: Computer-assisted image processing; femoral artery; multidetector computed tomography; magnetic resonance angiography (MRA); peripheral arterial disease

Submitted Dec 02, 2013. Accepted for publication Dec 30, 2013.

doi: [10.3978/j.issn.2223-3652.2014.01.01](https://doi.org/10.3978/j.issn.2223-3652.2014.01.01)

View this article at: <http://www.thecdt.org/article/view/3562/4515>

Introduction

Peripheral arterial occlusive disease (PAOD) is clinically categorized using Fontaine or Rutherford classifications. The first widely used standardized morphological classification was the TransAtlantic Inter-Society Consensus (TASC) for the management of PAOD (TASC I) in 2000 (1). The objective was to create a uniform system to describe arterial lesions based on the morphological evaluation of 2D angiograms, in order to harmonize therapeutic management and guide decision making in patients presenting identical conditions.

TASC I classification was promptly found insufficient and has been updated in 2007 (2) to get on par with the technical advances in endovascular surgery. In this updated classification, femoro-popliteal lesions are divided in four groups (*Table 1*). TASC II is the only widely accepted taxonomy, and has demonstrated prognostic value for revascularization outcome in superficial femoral artery (SFA) occlusion (3-5). Even though this classification permitted to create a rough guidance for femoro-popliteal lesions depending on their morphology, it has shown some limitations. Indeed, complex arterial lesions are difficult to classify, leading to a poor inter and intra observer reproducibility (6), as only one lesion (stenosis or occlusion) is taken into account for the staging, whereas most peripheral arterial diseases are characterized by a combination of various lesions (7). Moreover, regarding the specific subject of SFA occlusion, TASC II classification is strictly limited to length and calcification analysis.

Non-invasive diagnosis of PAOD can be made by duplex ultrasonography, magnetic resonance angiography (MRA) and computed tomography angiography (CTA) (8). These techniques have gained wide acceptance upon the last ten years, and are mature enough to fully replace conventional diagnostic digital subtraction angiography (DSA) (9-12). Therefore, decision making is nowadays rarely made on DSA and rely more and more on modern cross-sectional imaging (13).

Offering a high image quality, a wide availability even in the emergency setting, a low complication rate and a reasonable cost (10,11), CTA has become the first-line examination for PAOD in many institutions, completely replacing diagnostic DSA. In the particular case of SFA occlusion, CTA can precisely depict its extent, accurately characterize its constitution and evaluate the quality of collateral circulation (14). State-of-the-art CTA can thus provide much more information than traditional invasive angiography (15), such as artery diameter, occlusion length, precise location (central or peripheral) of calcifications and

Table 1 TASC II classification of SFA occlusions

Type A	Single occlusion <5 cm in length
Type B	Single occlusion <5 cm but heavily calcified or multiple occlusions each <5 cm or single occlusion <15 cm
Type C	Multiple occlusions >15 cm
Type D	Chronic total occlusion >20 cm
TASC, TransAtlantic Inter-Society Consensus; SFA, superficial femoral artery.	

their accurate quantification (16).

We hypothesize that these morphological characteristics given by extensive post-treatment of CTA images could be the basis of a refined classification of SFA occlusions.

Methods

Our institutional review board approved this retrospective study and waived the requirement for informed consent.

Population

Two hundred and thirty two lower limb CTA examinations acquired from January to April, 2013 were reviewed in search of a total or segmental SFA occlusion. Fifty-one CTA examinations with at least one SFA occlusion were found, among which five were excluded for technical problems (hip prosthesis with major metal artifacts in three cases, poor opacification in one case and loss of submillimetric axial slices on PACS in one case). Forty-six CTA examinations corresponding to 46 distinct patients were thus finally included, totalizing 60 SFA occlusions. For each patient, clinical presentation at the time of the examination using the Fontaine classification was documented.

CTA acquisition protocol

All examinations were performed on the same computed tomography (CT) scanner (*Discovery CT750HD*, GE Healthcare, Milwaukee, Wisconsin, USA). Patient was positioned supine, feet first, and an initial scout view was made for exact planning of volume acquisition, from diaphragm to toes (10). A total of 100 to 125 mL of a high concentration iodine contrast media [iomeprol 400 mg/mL (*Iomeron*, Bracco, Milan, Italy)] were injected at a high rate (3.5 to 5 mL/sec) using an automatic power injector with

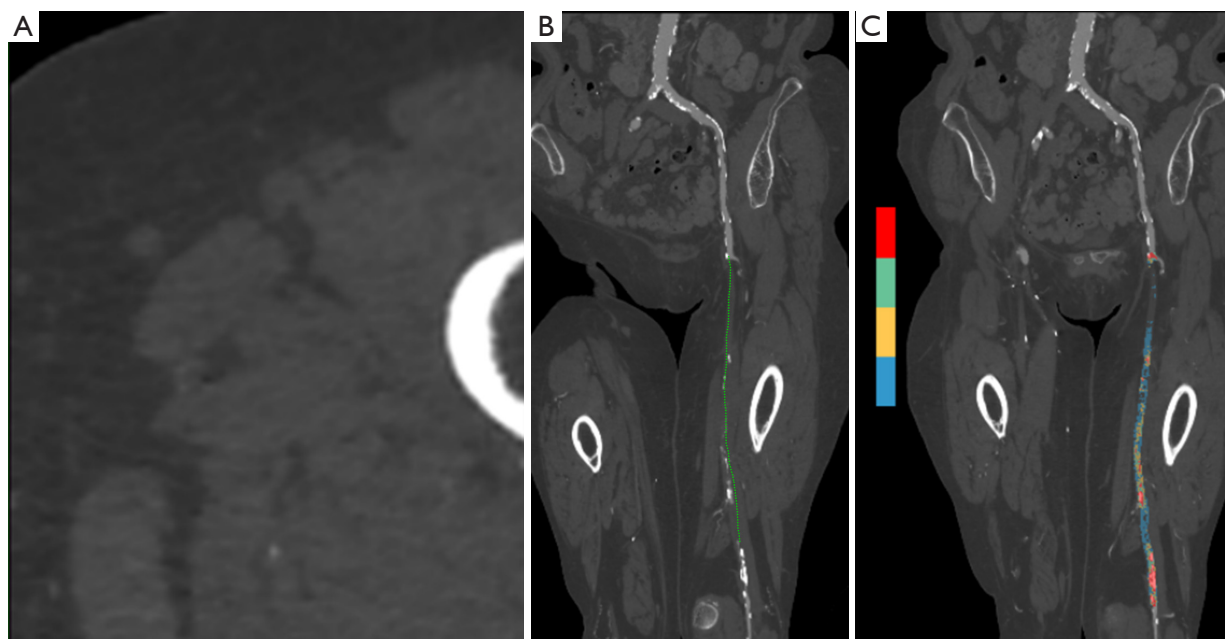


Figure 1 Axial slices (A) are used to place center points on the occluded SFA course to obtain a curved multiplanar reconstruction (B) Color-coded map (C) based on HU density highlights the voxels in the range 400-3,000 HU in red, giving their total volume in mm^3 .

a triphasic protocol and a saline chaser. Goal was to adapt the contrast media injection to the scan time, i.e., 25 to 35 seconds depending on patient's height. Volume acquisition was triggered with a bolus-tracking technique, using a region of interest placed within the abdominal aorta and a starting threshold at 150 HU. CT parameters were set at 100 kVp with automatic tube current modulation, a 0.5 s rotation time, a 0.7 pitch and a 64 mm \times 0.625 mm beam collimation. Axial contiguous 0.625 mm thick slices were reconstructed with a high definition filter and used for SFA analysis.

Radiation dose was evaluated with the dose-length product, expressed in mGy.cm.

Image post-processing

All post-processing were carried out on a dedicated Advantage Windows workstation five (GE Healthcare, Milwaukee, Wisconsin, USA) using AdW software in version 11.6.

DSA-like images of the arterial vasculature obtained after bone-removal and rendered using Maximum Intensity Projection and 3D Volume Rendering (17) were read by one experienced radiologist to categorize the SFA occlusions according to TASC II classification.

A curved multiplanar reconstruction (MPR) following the occluded SFA course was drawn by placing center points

every five slices (*Figure 1*) and used to precisely quantify:

- (I) Total occlusion length from the beginning of the occlusion up to the recovery. In case of popliteal involvement, occluded segment of the popliteal artery in direct continuation of the occluded SFA was included in the measurement;
- (II) Mean diameter of the occluded segment, obtained by the averaging of at least four manual measurements on transverse cross-sections perpendicular to the centerline; mean diameter of the closest upstream permeable arterial segment was used as a comparison;
- (III) Exact amount of calcifications in the occluded segment, using color-coded maps with automatic segmentation based on HU density: voxels in the range 400-3,000 HU were considered as calcifications and their total volume was expressed in cubic millimeter. To obtain a relative quantification of calcifications, the volume of the occluded segment was equated to the one of a cylinder whose length is the total occlusion length and whose diameter is the mean occluded segment diameter. Absolute volume of calcifications, automatically given by the post processing software using the color-coded map, was divided by this occluded volume so as to obtain an average percentage of calcifications within the

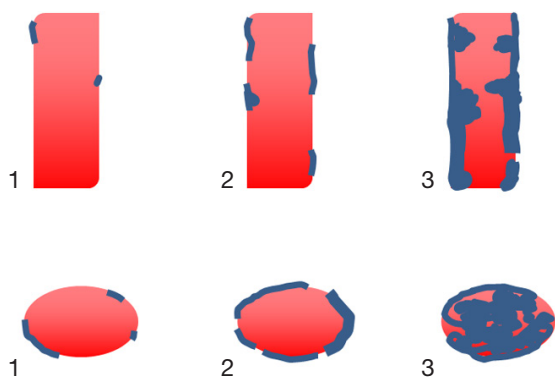


Figure 2 Schematic representation of the qualitative visual assessment of the global amount of calcification (upper row) and the characterization of the calcifications based on their axial location (lower row).

occluded segment.

These quantitative measures were done by the same experienced radiologist. Mean post-processing time was 15 minutes per artery.

Curved MPR as well as axial slices were used for visual qualitative assessment of (Figure 2):

- (I) The global amount of calcifications, using a 3-level qualitative scale: 1, absent to low; 2, moderate; 3, important;
- (II) The characterization of the calcifications based on their axial location: 1, parietal non concentric; 2, parietal concentric; 3, central. Only the higher grade was taken into account in case of multiple types of calcifications.

Statistical analysis

Potential correlations between clinical staging and CT quantitative and qualitative parameters (occlusion length, mean occluded SFA diameter, total volume of calcifications and type of calcifications) were sought using the software MedCalc in version 12.4.0. Pearson test, or Spearman test in case of non-parametric data, were used.

Results

Population

The 46 patients included (30 men, 16 women) were aged 68.3 ± 11.7 years old and their clinical PAOD classification was stage II in 49% of cases and stage III/IV in 51%. Regarding their 60 SFA occlusions, the vast majority (75%)

Table 2 Demographics of the study

Sex ratio	46 patients: 30 men, 16 women
Age	68.3 ± 11.7 years (range, 48-89 years)
Clinical PAOD stage	49% of patients were stage II, 51% were stage III/IV
TASC II classification	SFA occlusion was classified stage A in 3% of cases, stage B in 20%, stage C in 2% and stage D in 75%

PAOD, peripheral arterial occlusive disease; TASC, TransAtlantic Inter-Society Consensus; SFA, superficial femoral artery.

Table 3 CTA quantitative parameters

SFA occlusions	60 SFA occlusions, total in 39% of cases
Mean length	219 ± 107 mm (range, 14-530 mm)
Mean diameter	6.1 ± 1.6 mm (range, 3.4-10 mm)
Mean volume of calcifications	$1,265 \pm 1,893$ mm ³ (range, 0-8,815 mm ³)
Average percentage of calcifications	$17.4\% \pm 20\%$ (range, 0-88.7%)

CTA, computed tomography angiography; SFA, superficial femoral artery.

was TASC II stage D (Table 2).

Radiation dose

Mean Dose-Length Product was $1,395 \pm 462$ mGy.cm.

CTA quantitative parameters

Mean occlusion length was 219 ± 107 mm, with 39% of all SFA occlusions being total. Mean occluded diameter was 6.1 ± 1.6 mm and the average percentage of calcifications was calculated at $17.4\% \pm 20\%$ (Table 3).

CTA qualitative parameters

Calcifications were considered absent to low in 22% of cases, moderate in 19% and major in 59%. Regarding their preponderant axial location, they were parietal and non-concentric in 31% of cases, parietal and concentric in 15% and central in 54%.

The relationship between the qualitative visual assessment of the amount of calcifications and the percentage of calcifications is given for various thresholds in *Table 4*.

Correlation

Correlation coefficients between CTA characteristics, clinical staging, age and sex are given in *Table 5*. There was no significant correlation, with all P being largely above 0.05.

Discussion

To the best of our knowledge, this study is the first one to use advanced cross-sectional imaging to characterize and classify SFA occlusions.

The goal was to take advantage of all the information provided by modern cross-sectional imaging to bring out relevant anatomical characteristics and demonstrate the variety of SFA occlusions, variety that may appear obvious but is poorly recognized in the literature. TASC II classification is indeed strictly limited to length and calcification analysis, with

the distinction between low and “heavily calcified” occlusions only on 2D angiograms a potential source of difficulty. Moreover, assessing the chronicity of an occlusion on a DSA, as stated in TASC II guidelines, is at least challenging and can be a source of inter-observer disagreement.

We chose to use CTA over MRA in this study mainly because in our local guidelines, CTA is the default first-line examination in the acute setting as well as in outpatients. Indeed, CTA is more easily and readily available, due to a severe lack of magnetic resonance (MR) scanner in France, and more cost-effective.

CTA offers major advantages over 2D DSA: it can measure the average diameter of the occlusion, accurately establish the amount of calcifications and determine their exact position relatively to the lumen. Additionally, the quantitative parameters described in this study are independent from the reader, and could offer strong inter- and intra-reader reproducibility, thus addressing one of the most important limitations of TASC II classification.

Based on our observations on these 60 SFA occlusions, we decided to focus on two simple quantitative parameters to categorize these lesions: the mean diameter of the occluded segment and the percentage of calcifications.

Regarding the mean diameter, they were roughly two types of occlusions: the one where the occluded vessel was shrunk and the one where the diameter was kept normal or slightly enlarged. In accordance with one anatomical study (18), we selected a 5 mm threshold to differentiate SFA occlusions with a preserved diameter (≥ 5 mm, 73% of cases) from those with a reduced diameter (< 5 mm, 27%). Comparison with the nearest upstream permeable arterial segment showed that the occluded vessel is of smaller diameter in 80% of cases when under the 5 mm threshold, whereas only 45% of occluded segments of more than 5 mm are smaller than the adjacent upstream permeable artery. A reduced diameter could be the result of an evolution from a thrombotic to a fibrosclerotic material, thus complicating

Table 4 Correlation between the qualitative visual assessment of the amount of calcifications and the percentage of calcifications determined quantitatively

Threshold (%)	% lesions with absent to low calcifications under the threshold	% lesions with important calcifications above the threshold
1	31	100
2	62	97
3	85	94
4	85	94
5	85	91
7	100	86
10	100	77

Table 5 Correlations between CTA parameters and clinical data. Figures in parentheses correspond to P associated with the correlation coefficient

	Fontaine classification		Age	Sex	
	Stage II	Stage III/IV		Male	Female
Length	-0.025 (0.87)	0.025 (0.87)	-0.14 (0.37)	0.14 (0.34)	-0.14 (0.34)
Mean occluded segment diameter	0.12 (0.41)	-0.12 (0.41)	0.12 (0.43)	0.25 (0.9)	-0.25 (0.09)
Percentage of calcifications	-0.22 (0.15)	0.22 (0.15)	0.025 (0.86)	0.07 (0.62)	-0.07 (0.62)

CTA, computed tomography angiography.

Table 6 Proposed classification of SFA occlusions based on quantitative CTA analysis

SFA morphological analysis	Distribution
Type 1: normal occluded vessel caliber (>5 mm)—heavily calcified (>4%)	56%
Type 2: normal occluded vessel caliber (>5 mm)—few to no calcifications (<4%)	19%
Type 3: small occluded vessel caliber (<5 mm)—few to no calcifications (<4%)	15%
Type 4: small occluded vessel caliber (<5 mm)—heavily calcified (>4%)	10%

SFA, superficial femoral artery; CTA, computed tomography angiography.

recanalization procedures. As true axial diameters cannot be determined with 2D angiograms, this parameter is not mentioned in TASC II classification and poorly investigated in the literature.

To determine the level of percentage of calcifications that could best reflect the difference between low and heavily calcified occlusions, we looked at the correlation between the qualitative visual assessment of the amount of calcifications made by two radiologists and the percentage of calcifications determined quantitatively using extensive post processing (*Table 4*). The objective was to determine an optimal threshold of this percentage, in which calcifications qualitatively rated as absent to low would be under it, and calcifications visually categorized as important above. As demonstrated in *Table 4*, a 4% threshold offers the best cut-off between low and heavily calcified occlusions, successfully classifying respectively 85% and 94% of them. Moreover, this threshold tends to be associated with a central pattern of calcifications, as 59% of occluded SFA above this cut-off had this type of calcifications. It has been shown that moderate to severe calcifications at the site of re-entry is a predictor of failure in subintimal recanalization (19), but this was assessed using DSA. A central pattern is an original characteristic only evaluable with CTA, and not yet reported in the literature. Florid calcifications can take a staghorn appearance, and if it has still to be proven, it should logically complicate intraluminal or subintimal percutaneous recanalization.

Even in heavily calcified vessels, calcium blooming artifact was not a problem, as the minimal mean diameter of the occluded segment (3.4 mm) was well over the submillimetric spatial resolution of the examination. Therefore, qualitative visual analysis as well as segmentation of the calcifications was optimal.

Combining these two simple quantitative parameters, we

could define four groups of patients, as exposed in *Table 6* and illustrated in *Figure 3*.

The absence of correlation between any CTA parameters (diameter of the occluded segment, percentage of calcifications, central or concentric nature of calcifications) and the clinical severity of the disease as expressed by the Fontaine classification is somewhat logical, as the clinical consequence of an SFA occlusion is not related to its nature but to the quality of the collateral circulation. This could explain why our proposed classification is independent from the clinical staging. We also tried to see if the relative proportions of these four types remain the same within the different TASC II groups, but we were limited by the lack of patients in stage A and C. In stage B lesions (n=12), type 1 occlusions remain the most frequent pattern with 42%, whereas type 3 and 4 were the least frequent at 17% each. In stage D lesions (n=45), the distribution was roughly the same as the whole population, with type 1 lesions being the most frequent ones at 59%, and type 4 the rarest at 7%.

This could be particularly useful in the management of TASC II type D lesions: new endovascular revascularization techniques are arising for these common lesions (20,21), and this CTA-based morphological classification could provide support in choosing between them.

Could this study be applied to MRA? State-of-the art MRA can also accurately characterize stenosis and occlusion and provide a precise road-map for treatment planning, with the advantage of a radiation-free examination and immediate DSA-like images without the need of a time consuming bone removal process (22). In addition, the high contrast resolution of Magnetic Resonance Imaging (MRI) could help in distinguishing the different layers of the vessel wall (23,24), possibly offering another way of describing SFA occlusions. Furthermore, MRI can access a more functional aspect of the PAOD, such as the evaluation of the muscle response to a physical stress. Dedicated MR techniques like first-pass perfusion imaging (24-26) or ³¹PMR spectroscopy (24,27) could offer a quantitative evaluation of the quality of collateral circulation, indirectly reflecting the tolerance and the adaptation to the SFA occlusion. These parameters could prove useful for decision making.

However, in this specific objective of studying SFA occlusions, MRA have one major disadvantage over CTA: its inability to precisely quantify calcifications. Moreover, MRA slices are usually thicker than CTA (2 to 3 mm versus 0.625 mm) resulting in curved MPR of lesser quality (*Figure 4*), and the cost of MRA is significantly higher (28). Taking all these points into account, we believe that the isotropic

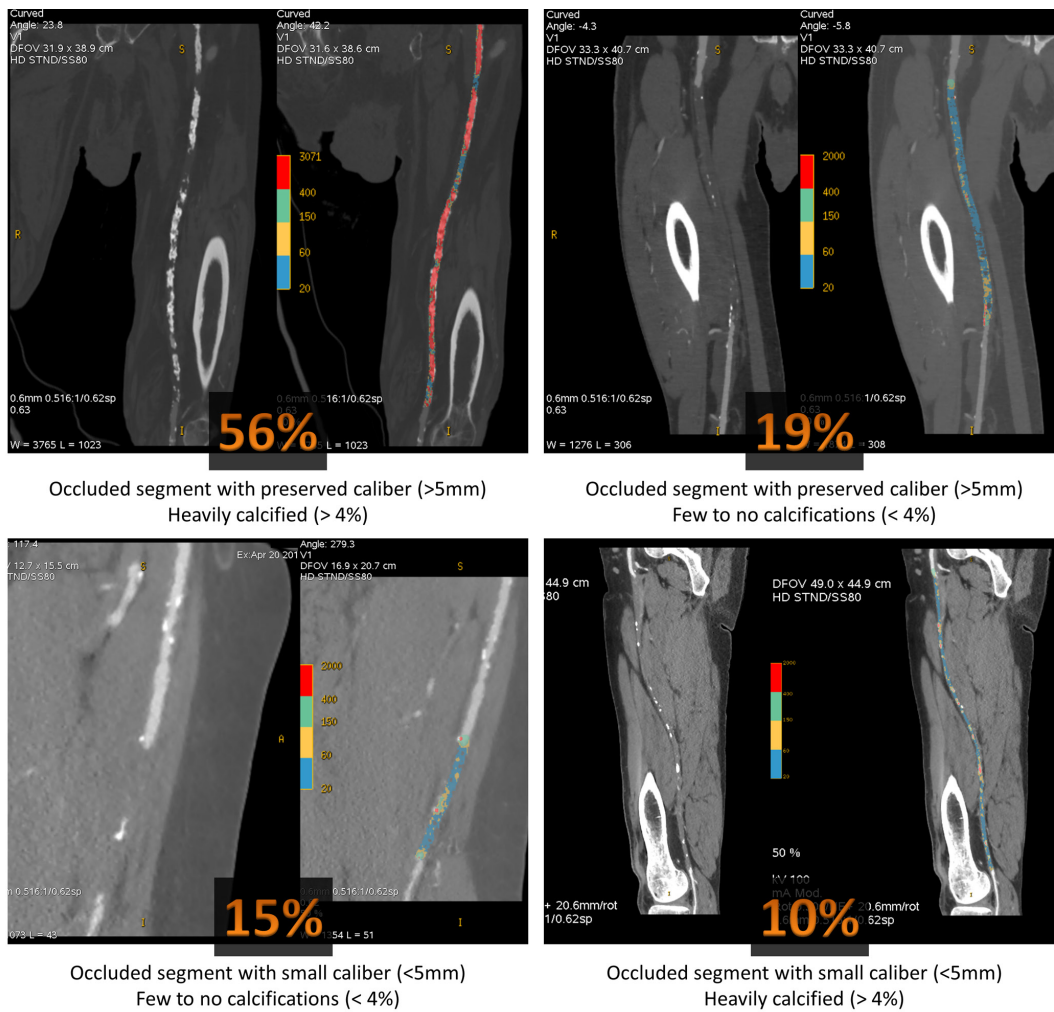


Figure 3 Examples of the four groups of patients in the proposed classification of SFA occlusions based on quantitative CTA analysis. SFA, superficial femoral artery; CTA, computed tomography angiography.

volume acquisition and the high calcium contrast obtained with CTA makes it, at least for now, more appropriate.

Study limitations

Being a purely descriptive anatomical study which was not intended to establish any prognosis parameters, its retrospective design and the absence of correlation with therapeutic outcome limit its use in practice. However, the aim of this work was only anatomical and descriptive, and a prospective study is currently under way to test a potential predictive value of these quantitative and qualitative CTA parameters for revascularization success.

Post-processing of each occluded artery was done by only

one experienced radiologist: it would have been interesting to have the CT data post-treated by two different radiologists to study the inter-observer agreement. Our preliminary tests in five different patients show however that inter-observer agreement is excellent.

The calculation of the percentage of calcifications remains an approximation, as the occluded vessel is not in reality a perfect cylinder. This original parameter is however simple to obtain and, even though not perfectly accurate, gives a good approximation of the global amount of calcifications in the occluded artery.

CTA is now a mature and robust imaging examination that has totally overcome diagnostic DSA and can be considered as the reference exploration of lower limb arteries. Provided

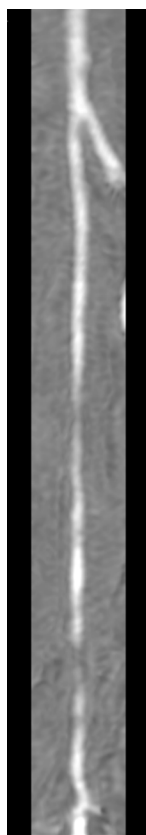


Figure 4 MRA based curved multiplanar reconstruction of a focal right SFA occlusion. MRA, magnetic resonance angiography; SFA, superficial femoral artery.

adequate acquisition and expert post-treatment are carried out, CTA can bring numerous advantages in depiction and characterization of SFA diseases. Thus, simple morphological elements such as occluded vessel diameter and percentage of calcifications can lead to a new approach in the classification of SFA occlusions. Not all occlusions are the same, and this statement, as obvious as it may seem, is elegantly proven and exposed by cross-sectional imaging, and could be the basis of a more precise patient management.

Acknowledgements

Disclosure: The authors declare no conflict of interest.

References

1. Dormandy JA, Rutherford RB. Management of peripheral arterial disease (PAD). TASC Working Group. TransAtlantic Inter-Society Consensus (TASC). *J Vasc Surg* 2000;31:S1-S296.
2. Norgren L, Hiatt WR, Dormandy JA, et al. Inter-Society Consensus for the Management of Peripheral Arterial Disease (TASC II). *J Vasc Surg* 2007;45 Suppl S:S5-67.
3. Al-Khoury G, Marone L, Chaer R, et al. Isolated femoral endarterectomy: impact of SFA TASC classification on recurrence of symptoms and need for additional intervention. *J Vasc Surg* 2009;50:784-9.
4. Ilnat DM, Duong ST, Taylor ZC, et al. Contemporary outcomes after superficial femoral artery angioplasty and stenting: the influence of TASC classification and runoff score. *J Vasc Surg* 2008;47:967-74.
5. Faglia E, Clerici G, Airolidi F, et al. Revascularization by angioplasty of type D femoropopliteal and long infrapopliteal lesion in diabetic patients with critical limb ischemia: are TASC II recommendations suitable? A population-based cohort study. *Int J Low Extrem Wounds* 2012;11:277-85.
6. Kukkonen T, Korhonen M, Halmesmäki K, et al. Poor inter-observer agreement on the TASC II classification of femoropopliteal lesions. *Eur J Vasc Endovasc Surg* 2010;39:220-4.
7. Ricco JB. Advantages and limitations of TASC II classification of femoropopliteal lesions. *Eur J Vasc Endovasc Surg* 2010;39:225-6.
8. Collins R, Burch J, Cranny G, et al. Duplex ultrasonography, magnetic resonance angiography, and computed tomography angiography for diagnosis and assessment of symptomatic, lower limb peripheral arterial disease: systematic review. *BMJ* 2007;334:1257.
9. Clair D, Shah S, Weber J. Current state of diagnosis and management of critical limb ischemia. *Curr Cardiol Rep* 2012;14:160-70.
10. Kayhan A, Palabiyik F, Serinsöz S, et al. Multidetector CT angiography versus arterial duplex USG in diagnosis of mild lower extremity peripheral arterial disease: is multidetector CT a valuable screening tool? *Eur J Radiol* 2012;81:542-6.
11. Osama A, Zaytoun H, Soliman HH. Role of multi-slice CT angiography versus Doppler ultrasonography and conventional angiography in assessment of aorto-iliac arterial disease. *The Egyptian Journal of Radiology and Nuclear Medicine* 2012;43:561:73.
12. Sommer WH, Bamberg F, Johnson TR, et al. Diagnostic accuracy of dynamic computed tomographic angiographic of the lower leg in patients with critical limb ischemia. *Invest Radiol* 2012;47:325-31.
13. Fotiadis N, Kyriakides C, Bent C, et al. 64-section CT

- angiography in patients with critical limb ischaemia and severe claudication: comparison with digital subtractive angiography. *Clin Radiol* 2011;66:945-52.
14. Heijnenbroek-Kal MH, Kock MC, Hunink MG. Lower extremity arterial disease: multidetector CT angiography meta-analysis. *Radiology* 2007;245:433-9.
 15. Kashyap VS, Pavkov ML, Bishop PD, et al. Angiography underestimates peripheral atherosclerosis: lumenography revisited. *J Endovasc Ther* 2008;15:117-25.
 16. Lell MM, Anders K, Uder M, et al. New Techniques in CT Angiography. *Radiographics* 2006;26 Suppl 1:S45-62.
 17. Fishman EK, Ney DR, Heath DG, et al. Volume rendering versus maximum intensity projection in CT angiography: what works best, when, and why. *Radiographics* 2006;26:905-22.
 18. Kröger K, Buss C, Goyen M, et al. Diameter of occluded superficial femoral arteries limits percutaneous recanalization: preliminary results. *J Endovasc Ther* 2002;9:369-74.
 19. Shin SH, Baril D, Chaer R, et al. Limitations of the Outback LTD re-entry device in femoropopliteal chronic total occlusions. *J Vasc Surg* 2011;53:1260-4.
 20. Ramaiah V. Endovascular infrainguinal revascularization: technical tips for atherectomy device selection and procedural success. *Semin Vasc Surg* 2008;21:41-9.
 21. Sharafuddin MJ, Amin PB, Nicholson RM, et al. Femoropopliteal Endovascular Interventions. In: Hoballah JJ, Lumsden AB. eds. *Vascular Surgery*: Springer London, 2012:213-40.
 22. Ersoy H, Rybicki FJ. MR Angiography of the Lower Extremities. *American Journal of Roentgenology* 2008;190:1675-84.
 23. Mitsouras D, Owens CD, Conte MS, et al. In vivo differentiation of two vessel wall layers in lower extremity peripheral vein bypass grafts: application of high-resolution inner-volume black blood 3D FSE. *Magn Reson Med* 2009;62:607-15.
 24. Kramer CM. Peripheral arterial disease assessment: wall, perfusion, and spectroscopy. *Top Magn Reson Imaging* 2007;18:357-69.
 25. Richardson RS, Haseler LJ, Nygren AT, et al. Local perfusion and metabolic demand during exercise: a noninvasive MRI method of assessment. *J Appl Physiol* (1985) 2001;91:1845-53.
 26. Isbell DC, Epstein FH, Zhong X, et al. Calf muscle perfusion at peak exercise in peripheral arterial disease: measurement by first-pass contrast-enhanced magnetic resonance imaging. *J Magn Reson Imaging* 2007;25:1013-20.
 27. Zatina MA, Berkowitz HD, Gross GM, et al. 31P nuclear magnetic resonance spectroscopy: noninvasive biochemical analysis of the ischemic extremity. *J Vasc Surg* 1986;3:411-20.
 28. Ouwendijk R, de Vries M, Pattynama PM, et al. Imaging peripheral arterial disease: a randomized controlled trial comparing contrast-enhanced MR angiography and multi-detector row CT angiography. *Radiology* 2005;236:1094-103.

Cite this article as: Ohana M, El Ghannudi S, Girsowicz E, Lejay A, Georg Y, Thaveau F, Chakfe N, Roy C. Detailed cross-sectional study of 60 superficial femoral artery occlusions: morphological quantitative analysis can lead to a new classification. *Cardiovasc Diagn Ther* 2014;4(2):71-79. doi: 10.3978/j.issn.2223-3652.2014.01.01