

Technical University of Denmark



Optimization of light out-coupling in optoelectronic devices using nanostructured surface

Ou, Haiyan; Ou, Yiyu; Argyraki, Aikaterini; Fadil, Ahmed; Lu, Weifang

Publication date:
2014

Document Version
Publisher's PDF, also known as Version of record

[Link back to DTU Orbit](#)

Citation (APA):
Ou, H., Ou, Y., Argyraki, A., Fadil, A., & Lu, W. (2014). Optimization of light out-coupling in optoelectronic devices using nanostructured surface. Abstract from 3rd international symposium on disperse systems for electronic applications, Erlangen, Germany.

DTU Library

Technical Information Center of Denmark

General rights

Copyright and moral rights for the publications made accessible in the public portal are retained by the authors and/or other copyright owners and it is a condition of accessing publications that users recognise and abide by the legal requirements associated with these rights.

- Users may download and print one copy of any publication from the public portal for the purpose of private study or research.
- You may not further distribute the material or use it for any profit-making activity or commercial gain
- You may freely distribute the URL identifying the publication in the public portal

If you believe that this document breaches copyright please contact us providing details, and we will remove access to the work immediately and investigate your claim.

Optimization of light out-coupling in optoelectronic devices using nanostructured surface

Haiyan Ou¹, Yiyu Ou^{1,2}, Aikaterini Argyraki¹, Ahmed Fadil¹, Weifang Lu¹

¹ Department of Photonics Engineering, Technical University of Denmark, DK-2800, Kgs. Lyngby, Denmark

² Light Extraction ApS, DK-2800, Kgs. Lyngby, Denmark

Light-emitting diodes (LEDs) are emerging as a future market leader for indoor and outdoor lighting because it has higher energy-efficiency, longer lifetime, more compact size and more flexible spectral design, compared to the conventional incandescent lamp and fluorescent light tubes. In order to fully explore the potential of this new light sources, huge amount of effort has been made to enhance the light extraction efficiency, which is usually very low due to the large refractive index difference between the semiconductor materials and the air, thus is very crucial in order to improve the overall efficiency of the LEDs. In this paper we have developed various methods for two important semiconductors: silicon carbide (SiC) and gallium nitride (GaN), and demonstrated enormous extraction efficiency enhancement. SiC is an important substrate for LED devices. It has refractive index of 2.6, and only a few percent of light could escape from it. We have developed periodic nanocone structures by using electron-beam lithography, periodic nanodome structures by using nanosphere lithography, random nanostructures by using self-assembled metal nanoparticles, and random nanostructures by directly using the self-masking effect of thin Al films, as shown in Fig.1. All these nanostructures have shown increased transmittance or reduced reflectance compared to the bare surface. Fluorescent SiC samples show tremendous photoluminescence enhancement (up to 210%) after the surface nanostructuring. As active material for LEDs, GaN also has high refractive index of 2.4. So, it is also very important to extract more light out by roughening the surface. For GaN, the self-assembly method was applied. The same transmittance enhancement (15~20%) is demonstrated, similar to SiC. In addition to SiC and GaN, these developed methods could be applied to other semiconductors such as Si, etc. Furthermore, all optoelectronic devices having an optical interface such as solar cells, photo-detectors, could benefit from these developed methods for opto-electronic performance improvement.

Acknowledgement: Financial support by the Danish councils for strategic research funding (no. 09-072118), Proof of Concept funding, Danish Ministry of Science, Innovation and Higher Education are gratefully acknowledged. The fluorescent SiC samples are provided by Linköping University and Erlangen University.

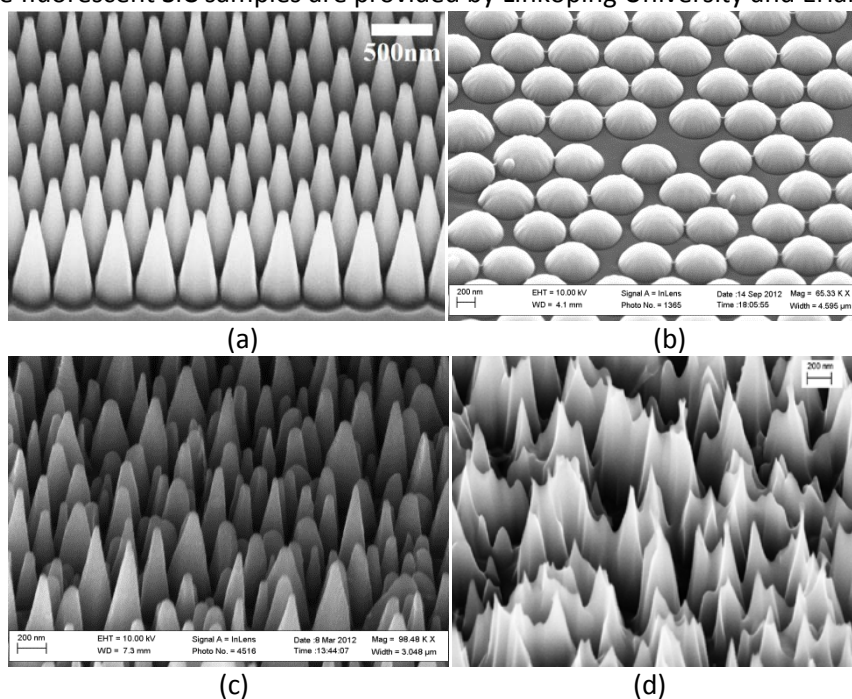


Figure 1. (a) Periodic nanocone structures by E-beam lithography, (b) Periodic nanodome structures by nanosphere lithography, (c) Random nanostructures by self-assembled metal nanoparticles, (d) Random nanostructures by Al thin films