

LRIG1 negatively regulates RET mutants and is downregulated in thyroid cancer

DAVID LINDQUIST¹, FERNANDO C. ALSINA², CARL HERDENBERG¹, CATHARINA LARSSON³,
JO HÖPPENER⁴, NA WANG³, GUSTAVO PARATCHA², MIKLÓS TARJÁN⁵,
TIBOR TOT⁵, ROGER HENRIKSSON¹ and HÅKAN HEDMAN¹

¹Oncology Research Laboratory, Department of Radiation Sciences, Umeå University, SE-90187 Umeå, Sweden;

²Institute of Cell Biology and Neuroscience (IBCN)-CONICET, School of Medicine, University of Buenos Aires (UBA),

Buenos Aires 1121, Argentina; ³Department of Oncology-Pathology, Karolinska Institutet, Cancer Center Karolinska, Karolinska University Hospital, 171 76 Stockholm, Sweden; ⁴University Medical Center Utrecht,

Division of Biomedical Genetics and Laboratory of Translational Immunology, 3508 GA Utrecht, The Netherlands;

⁵Department of Pathology and Clinical Cytology, Central Hospital Falun, 791 82 Falun, Sweden

Received November 21, 2017; Accepted January 24, 2018

DOI: 10.3892/ijo.2018.4273

Abstract. Papillary thyroid carcinoma (PTC) and medullary thyroid carcinoma (MTC) are characterized by genomic rearrangements and point mutations in the proto-oncogene RET. Leucine-rich repeats and immunoglobulin-like domains 1 (LRIG1) is a suppressor of various receptor tyrosine kinases, including RET. LRIG1 expression levels are associated with patient survival in many cancer types. In the present study, we investigated whether the oncogenic RET mutants RET2A (C634R) and RET2B (M918T) were regulated by LRIG1, and the possible effects of LRIG1 expression in thyroid cancer were investigated in three different clinical cohorts and in a RET2B-driven mouse model of MTC. LRIG1 was shown to physically interact with both RET2A and RET2B and to restrict their ligand-independent activation. *LRIG1* mRNA levels were downregulated in PTC and MTC compared to normal thyroid gland tissue. There was no apparent association between LRIG1 RNA or protein expression levels and patient survival in the studied cohorts. The transgenic *RET2B* mice developed pre-cancerous medullary thyroid lesions at a high frequency (36%); however, no overt cancers were observed. There was no significant difference in the incidence of pre-cancerous lesions between *Lrig1* wild-type and *Lrig1*-deficient *RET2B* mice. In conclusion, the findings that LRIG1 is a negative regulator of RET2A and RET2B and is

also downregulated in PTC and MTC may suggest that LRIG1 functions as a thyroid tumor suppressor.

Introduction

Thyroid carcinoma is the most common endocrine malignancy. In 2008, ~212,000 new cases were diagnosed worldwide (1). Thyroid carcinomas are classified into three major morphological well-differentiated types: papillary thyroid carcinoma (PTC), follicular thyroid carcinoma (FTC) and medullary thyroid carcinoma (MTC) with overall good prognosis (2). In contrast, poorly differentiated thyroid carcinoma (PDTC) and undifferentiated anaplastic thyroid carcinoma (ATC) carry a poor prognosis (2). PTC, FTC, PDTC and ATC are believed to originate from follicular cells, whereas MTC is believed to be derived from calcitonin-producing parafollicular cells (also called C-cells). Multiple endocrine neoplasia type 2A (MEN2A) and 2B (MEN2B) are caused by germ-line mutations in the proto-oncogene *rearranged during transfection* (*RET*) and are also associated with an increased incidence of MTC (3). The most common *RET* mutations in MEN2A and MEN2B are C634R and M918T, respectively (4) (hereafter the correspondingly mutated receptors are referred to as RET2A and RET2B, respectively). Twenty-five to 30% of MTC cases are associated with heritable *RET* mutations (5). In sporadic MTC, somatic *RET* mutations, typically the M918T mutation, are present in ~50% of cases (3). In PTC, genomic rearrangements involving *RET* and different partner genes are common, especially in radiation-induced cases (reviewed in ref. 5). Thus, the incidence of *RET* rearrangements in PTC ranges from 87%, in a series of early cases from the Chernobyl nuclear accident (6), to 20 and 7%, in two recent series of sporadic cases (3,7,8). In most cases, thyroid carcinomas are localized to the thyroid gland and the treatment used for these patients includes surgery, radiation therapy and radioiodine therapy. For patients with metastatic disease, however, the treatment options are limited.

Correspondence to: Dr David Lindquist, Oncology Research Laboratory, Department of Radiation Sciences, Umeå University, SE-901 87 Umeå, Sweden
E-mail: david.lindquist@onkologi.umu.se

Key words: thyroid cancer, LRIG1, RET, C634R, M918T, MEN2A, MEN2B

The human leucine-rich repeats and immunoglobulin-like domains (LRIG) gene family includes three genes: *LRIG1*, *LRIG2* and *LRIG3* (9-11). Increasing evidence indicates that *LRIG1* functions as a tumor suppressor (reviewed in refs. 12 and 13) and the high expression of the LRIG1 mRNA or protein are associated with an increased survival in breast cancer (14), ovarian cancer (15), uterine cervical cancer (16), cutaneous squamous cell carcinoma (17), nasopharyngeal and oropharyngeal cancer (18,19), non-small cell lung cancer (20), and hepatocellular carcinoma (21). Molecular studies have shown that LRIG1 negatively regulates wild-type tyrosine kinase receptors of the epidermal growth factor receptor (EGFR) family (22-25), hepatocyte growth factor receptor (MET) (26), RET (27), platelet-derived growth factor receptor α (PDGFRA) (28), and neurotrophic tyrosine kinase receptor type 2 (NTRK2, also known as TRKB) (29). However, it is not known whether the MEN2- and thyroid cancer-associated mutant RET receptors, RET2A and RET2B, are also LRIG1 targets.

The aim of the present study was to investigate the possible role of LRIG1 in thyroid carcinoma. We investigated whether LRIG1 regulates RET2A and RET2B at the molecular level, analyzed the expression and possible prognostic value of LRIG1 in three human thyroid carcinoma cohorts, and investigated the role of *Lrig1* in a transgenic RET2B-driven mouse MTC model.

Materials and methods

Cell culture, plasmids and transfections. COS-7 cells (ATCC, Manassas, VA, USA) were grown in Dulbecco's modified Eagle's medium supplemented with 10% fetal bovine serum, as previously described (29). The cells were transiently transfected with polyethylenimine-PEI (Polysciences, Inc., Warrington, PA, USA). Plasmid cDNA encoding full-length, Flag-tagged LRIG1 has been described previously (30). The expression vector encoding RET2A (C634R) was previously described (31). The cDNA expression vector encoding RET2B (M918T) was kindly provided by Dr M. Santoro at University Federico II (Naples, Italy) (32).

Immunoprecipitations and western blotting. The cells were lysed at 4°C in TNE-buffer (50 mM Tris pH 7.5, 150 mM NaCl and 2 mM EDTA) supplemented with 0.5% Triton X-100, 1% octyl- β -glucoside, phosphatase inhibitors (50 mM NaF, 2 mM Na₃VO₄), and complete EDTA-free protease inhibitors (Roche). Cell lysates were clarified by centrifugation and analyzed by immunoprecipitation and western blotting using previously described methodologies (27). Ligand-independent RET phosphorylation was examined at 48 h after transfection in COS-7 cells expressing RET2A or RET2B constructs together with either an empty vector or Flag-LRIG1. The blots were scanned in a Storm 845 PhosphorImager and quantifications were conducted with ImageQuant software (both from GE Healthcare Life Sciences, Capital Federal, Argentina). The antibodies used were anti-phosphotyrosine (p-Tyr, clone PY99, catalogue no. SC7020) at a 1:10,000 dilution, anti-Ret (goat antibodies C20 and T20, catalogue no. SC-1290) (both from Santa Cruz Biotechnology, Santa Cruz, CA, USA) at a 1:1,000 dilution, and anti-Flag M2 mouse monoclonal antibody

(catalogue no. F1804; Sigma-Aldrich, St. Louis, MO, USA) at a 1:1,500 dilution.

Patient cohorts. Three different patient cohorts were investigated. The first cohort (Cohort1-TCGA) comprised the thyroid carcinoma cases available at The Cancer Genome Atlas (TCGA), which included 502 PTC and 58 normal thyroid gland tissues (<http://cancergenome.nih.gov/>; December 15, 2016). The RNAseq count data and patient survival data were downloaded from TCGA (<http://cancergenome.nih.gov/>; December 15, 2016). The samples were upper quartile normalized FPKM (UQ-FPKM) and the samples were log-transformed to follow a normal distribution.

The second cohort (Cohort2-MTC) has been described previously (33) and included 39 MTC patient samples and 12 normal tissue controls collected with informed consent and local ethical approval at the Karolinska University Hospital. The clinical data, survival and mutation status of the *RET* and *RAS* genes were as reported in a previous study (33).

The third cohort (Cohort3-TMA) was collected with the aim of including all patients diagnosed with thyroid carcinoma in the county of Dalarna, Sweden, between the years 1980 and 2008. The study was approved by the Regional Ethics Review Board in Uppsala (dnr 2010/351), and the Swedish Cancer Registry was used to identify the patients. Only patients who provided written informed consent were included in the study. Paraformaldehyde-fixed and paraffin-embedded tissues were retrieved from hospital archives and used to assemble a tissue microarray (TMA). The diagnostic groups PTC, FTC, MTC, PDTC and ATC were represented, and FTCs with or without oncocytic features (so called Hurthle cell or oxyphilic) were separately studied. All patients gave written informed consent prior to their inclusion in the study. The clinical data were collected from patient files, including histology, TNM stage, time to relapse, and date and cause of death.

RNA extraction and quantitative real-time RT-PCR. The RNA from Cohort2-MTC, which had been prepared previously (33), was treated with TURBO DNA-free kit (Life Technologies) according to the manufacturer's instructions. Human *LRIG1* and the reference gene *RNI8S* were analyzed in triplicate samples of 20 ng total RNA through quantitative reverse transcription (RT) polymerase chain reaction (PCR), essentially as previously described (9). However, in contrast to what was previously described (9), qScript 1-Step qRT-PCR Kit (Quanta Biosciences, Gaithersburg, MD, USA) and a Bio-Rad CFX96 apparatus (Bio-Rad Laboratories AB) were used. The *RNI8S*-normalized *LRIG1* levels were divided by the corresponding level in the QPCR Human Reference Total RNA (Agilent Technologies, Santa Clara, CA, USA). Thus, the normalized *LRIG1* level in the reference RNA was set to the value of 1.

Antibodies and evaluation of immunohistochemistry. Immunohistochemistry (IHC) was performed for Cohort3-TMA. IHC was performed on 4- μ m TMA sections using the LRIG1-151 antibody (18,30) at a dilution of 1:50. The antibody against human LRIG1 has been previously described. The intensity and proportion of positive cells were evaluated by an experienced pathologist (M.T.), who had previously performed a

similar evaluation using the same semi-quantitative evaluation scale in another material (18). Briefly, the intensity was evaluated as absent (0), weak (1⁺), intermediate (2⁺), or strong (3⁺), and the fraction of positive cells were evaluated and scored as 0%, 1-25%, 26-50%, 51-75% or 76-100% positive cells.

Animal experiments. All mice were housed and maintained, and all experiments were performed in accordance with the European Communities Council Directive (86/609/EEC). The experimental protocols were approved by the Regional Ethics Committee of Umeå University in Umeå, Sweden (registration nos. A80-08 and A81-11). The animals were housed under controlled conditions with a 12-h day/night cycle and fed water and standard chow pellets (cat. no. 801730; Special Diets Services, NOVA-SCB Sweden, Sollentuna, Sweden) *ad libitum*. The *Lrig1*-deficient allele has been described previously (34) and was bred onto a pure C57BL/6J genetic background for five generations. Heterozygous *Lrig1* mice were crossed with a transgenic mouse strain that ectopically expresses the human *RET2B* oncogene under the human *calcitonin* promoter and develop MTC at a high frequency (35,36). The *RET2B* mice were of a mixed genetic background (C57BL/6J:DBA2, 1:1). The mouse genotypes were determined using tail DNA, PCR, and standard molecular biology techniques. The PCR primers that were used for the *Lrig1* wild-type were: 5'-GCGAGCGTGTGTTGTGGAGAGGAT-3' and 5'-CGATTGTCTGGTGATCAGGAGACTGC-3', those used for the *Lrig1* knockout were: 5'-ACCTCAGGGAGCGAGCGCTCTTATGGGTTAGGACG-3' and 5'-CCCGTGATATTGCTGAAGAGCTTGGCGGCGAATGG-3', and those used for the *RET2B* were: 5'-TGGAGACCCAAGACATCAAC-3' and 5'-GGAGAAGAGGACAGCGGCT-3'. The PCR products (405 bp for the *Lrig1* wild-type; 1,060 bp for the *Lrig1* knockout; and 220 bp for the *RET2B*) were separated and visualized using analytical agarose gel electrophoresis.

The plasma calcitonin levels of the mice were measured every third month according to the methodology as previously described (36). Plasma calcitonin is an established marker of MTC and increased levels of it are usually detectable long before general signs of the disease. At 2 years of age or at signs of the disease, the mice were sacrificed and their thyroid glands were dissected, fixed in 4% phosphate-buffered formaldehyde, embedded in paraffin, and stained with routine hematoxylin and eosin staining.

Statistical analyses. To analyze differential gene expression, the tumor samples were compared with normal samples using a Student's t-test in Cohort1-TCGA and a Mann-Whitney U test in Cohort2-MTC. Associations between ordinal variables were tested using the Wilcoxon rank sum test, χ^2 test, one-way analysis of variance (ANOVA) not assuming equal variances, or Fisher's exact test, where appropriate. For survival analysis, the tumor samples were divided into two groups of high and low *LRIG1*, with the median as the cut-off, and the cumulative survival was then analyzed in the two groups and compared using the log-rank test. Survival was assessed in a Kaplan-Meier graph and a log-rank test was used for comparing different groups. Progression-free survival (PFS, the end-point date of relapse, censoring at the date of the last follow-up), disease-specific survival (DSS, the end-point date of death when thyroid cancer was specified as the cause of

death, censoring at the date of the last follow-up), and overall survival (OS, the end-point date of death from any cause, censoring at the date of the last follow-up) were all addressed. The groups that were investigated included the expression of *LRIG1*, as well as other known prognostic factors, including clinical stage and age. All of the significance testing was performed at the 0.05 level and only two-sided P-values were presented.

Results

Interactions between *LRIG1* and mutant *RET2A* and *RET2B* proteins. To investigate whether *LRIG1* interacts with and regulates the oncogenic *RET2A* and *RET2B* receptors, COS-7 cells were co-transfected with *LRIG1* and the respective *RET* variant. After 48 h, cell lysates were prepared and subjected to immunoprecipitation and western blot analysis. *LRIG1* physically interacted with both *RET2A* and *RET2B*, as shown by the co-immunoprecipitation of *LRIG1* and the *RET2A* and *RET2B* proteins (Fig. 1A and B). Furthermore, *LRIG1* co-expression induced the downregulation of the phosphorylation levels of *RET2A* and *RET2B* without significantly affecting the corresponding total protein levels (Fig. 1C-F). Thus, *LRIG1* physically interacted with and inhibited the activation of both *RET2A* and *RET2B*.

***LRIG1* gene and protein expression levels and comparison to clinical features.** To investigate the importance of *LRIG1* expression in thyroid cancer, we i) analyzed the PTC expression data available at TCGA (Cohort1-TCGA), ii) performed quantitative RT-PCR analysis of a series of MTC samples (Cohort2-MTC), and iii) analyzed a thyroid cancer TMA (Cohort3-TMA) through immunohistochemistry.

Cohort1-TCGA contained data from 502 PTC samples and 58 normal thyroid gland samples. In this material, the mean *LRIG1* expression level was lower in PTC than in the normal thyroid gland ($P=2.2 \times 10^{-16}$, Student's t-test) (Fig. 2A). There was a significant association between a higher PTC clinical stage and lower *LRIG1* expression ($P=0.0034$, one-way ANOVA) (Fig. 2B). There was no significant association between the OS of patients and the *LRIG1* expression level in the TCGA data set (high versus low *LRIG1* expression level, median used as cut-off; $P=0.435$, log-rank test).

In Cohort2-MTC, the relative *LRIG1* mRNA levels were analyzed in 39 MTC and 12 normal thyroid glands through quantitative RT-PCR. Twenty-two of the 39 (56%) MTC cases were *RET* mutated, whereas six (15%) showed either *HRAS* or *KRAS* mutations (33). The intragroup variability of *LRIG1* expression was relatively high, as evidenced from the sample standard deviations from the means that were 179 and 70% for the normal and MTC samples, respectively. Nevertheless, the relative *LRIG1* expression level was significantly lower in MTC than in normal thyroid gland (0.38, SD ± 0.27 vs. 1.94, SD ± 3.47 ; $P=0.00063$, Mann-Whitney U test) (Fig. 2C). Both the *RET* mutated and *RET* wild-type cases showed significantly lower *LRIG1* levels than the normal thyroid glands (0.41, SD ± 0.33 and 0.34, SD ± 0.15 , respectively vs. 1.94, SD ± 3.47 ; $P=0.0036$ and $P=0.0016$, respectively). There was a statistically insignificant association between a higher MTC clinical stage and lower *LRIG1* expression ($P=0.136$, Kruskal-Wallis test) (Fig. 2D).

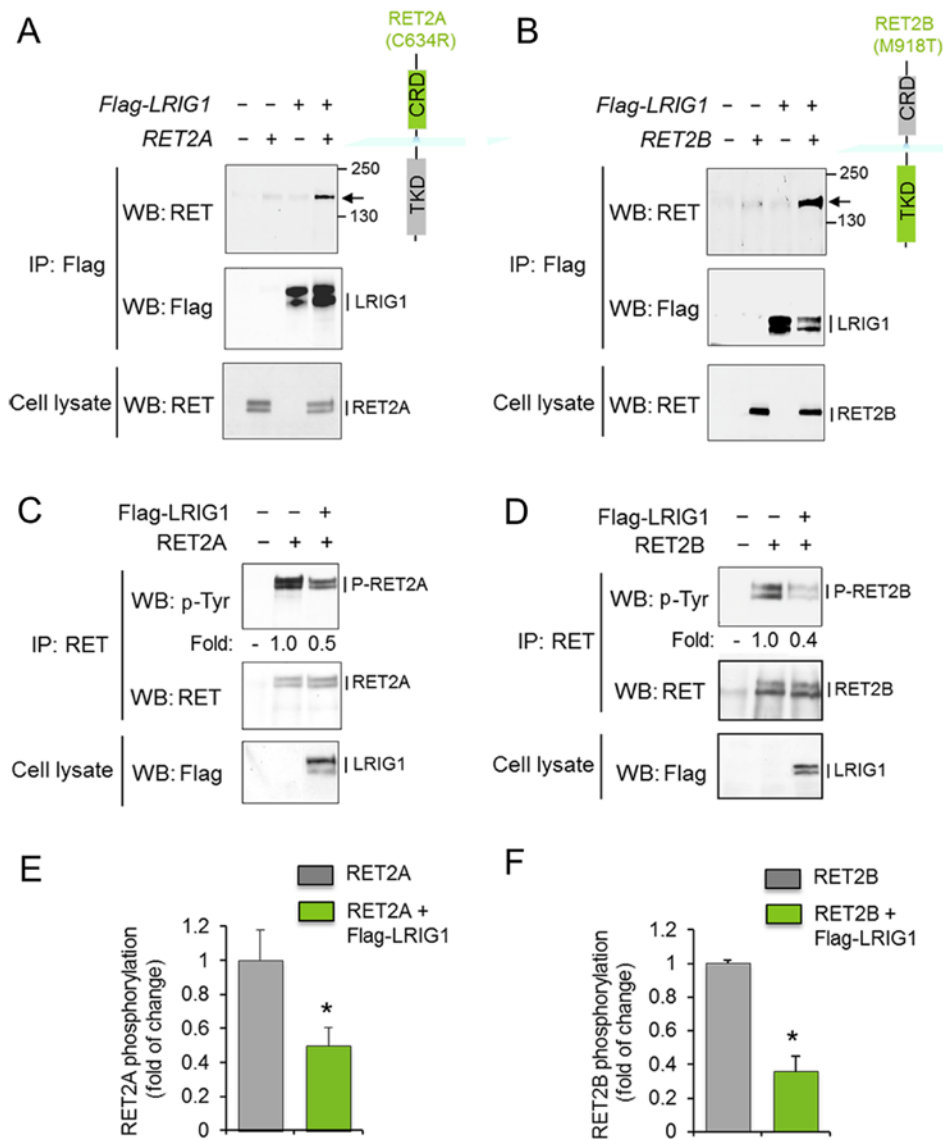


Figure 1. LRIG1 interacts with and restricts the ligand-independent constitutive phosphorylation of RET2A and RET2B oncogenic mutants. A schematic representation of RET2A (i.e., C643R recurrent in MEN2A) and RET2B (i.e., M918T seen in MEN2B and sporadic MTC) are shown at the top. TKD indicates tyrosine-kinase domain and CRD indicates a cysteine-rich domain. (A and B) Co-immunoprecipitation between Flag-tagged LRIG1 (Flag-LRIG1) and RET2A (A) or RET2B (B) overexpressed in COS-7 cells. Cell extracts were analyzed by immunoprecipitation (IP) with anti-Flag antibodies followed by western blotting (WB) with antibodies against RET and reincubation of the same blots with the anti-Flag antibody. The bottom panels show the RET expression in cell lysates. Similar results were obtained in two independent assays. (C and D) Ligand-independent RET2A and RET2B tyrosine phosphorylation in COS-7 cells transfected with either the control vector or Flag-LRIG1. The total lysates were immunoprecipitated with anti-RET antibodies followed by WB with antibodies against phosphotyrosine (p-Tyr). The re-probing of the same blot with anti-RET antibodies is also shown. The bottom panels show the Flag-LRIG1 expression in cell lysates. The numbers below the lanes indicate the fold of induction relative to the control and normalized to the total levels of RET protein. (E and F) Bar graphs showing the levels of ligand-independent RET2A (E) and RET2B (F) phosphorylation in the absence or presence of Flag-LRIG1, as assessed in (C and D). The results are shown as the mean \pm SEM of $n=5$ (E) or $n=3$ (F) independent experiments. * $P<0.05$ by Student's t-test. MTC, medullary thyroid carcinoma; *RET*, rearranged during transfection; LRIG1, leucine-rich repeats and immunoglobulin-like domains 1.

There was no significant difference in *LRIG1* levels between the *RET*-mutated, *RAS*-mutated, or other MTCs.

Cohort3-TMA was analyzed by immunohistochemistry (IHC) using a TMA with 118 thyroid carcinomas (Table I). In this cohort, 125 patients gave informed consent to participate (Table I) and it was possible to perform IHC on samples from 118 patients, whereas for 7 patients, it was not possible to perform this analysis because of the limited amount of available tissue. Examples of cases with different LRIG1 staining intensities and proportions of positive cells are shown in Fig. 3. Detailed data on the clinical parameters and results of IHC for Cohort3-TMA are presented in Table I. The possible

associations between LRIG1 immunoreactivity (proportion of positive cells or intensity of staining) and histology, clinical stage, age, sex, and clinical outcome were investigated. A significant difference was found when histology was compared with the percentage of LRIG1-positive cells ($P=0.026$, χ^2 test) and intensity of LRIG1 staining ($P=0.033$, χ^2 test). This showed that the distribution of LRIG1 immunoreactivities (percentage or intensity) was different between the different histological groups. However, because of the small sample sizes, it was not possible to draw firm conclusions about the distributions within individual groups. Both the fraction of LRIG1-positive cells and the intensity of LRIG1 staining were associated with whether

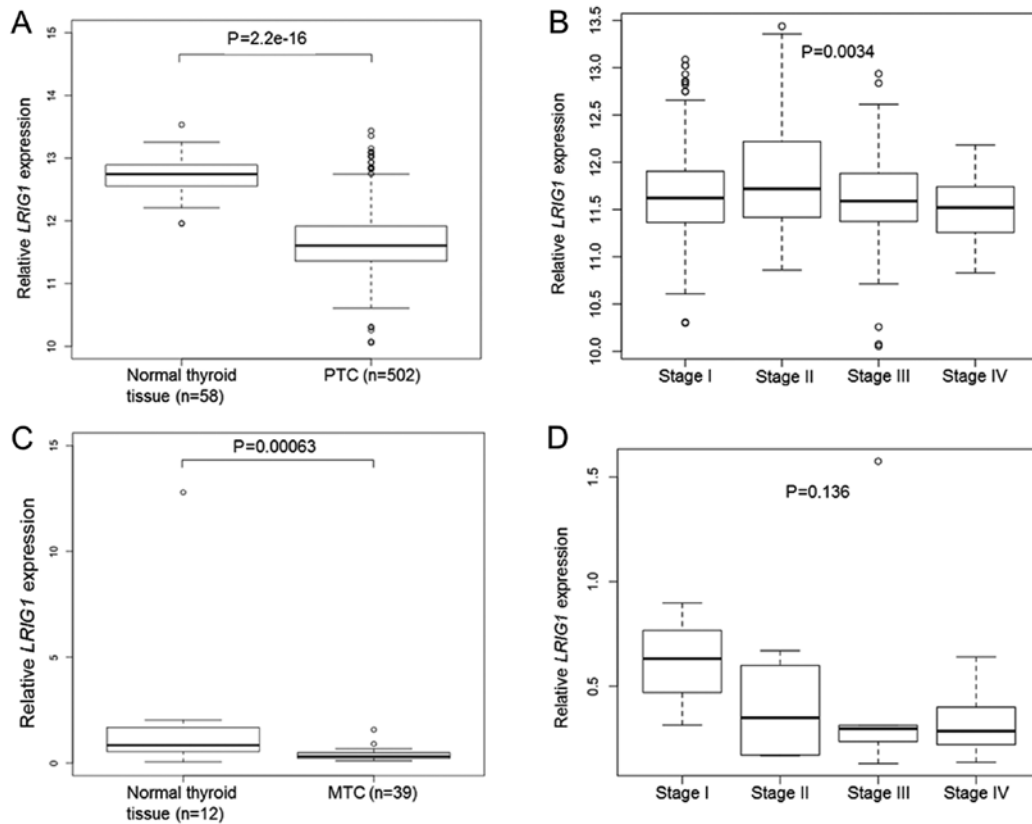


Figure 2. *LRIG1* expression levels in PTC, MTC, and normal thyroid tissues. (A) Boxplots showing relative *LRIG1* mRNA levels in normal thyroid tissue (n=58) and PTC (n=502) according to the TCGA dataset. The *LRIG1* expression level was significantly lower in PTC than in normal thyroid tissue ($P=2.2e-16$). Outlier values are marked °. (B) Boxplots showing the relative *LRIG1* expression in PTC ordered by clinical stage according to the TCGA data set. A higher clinical stage was significantly associated with a lower *LRIG1* expression (one-way ANOVA, $P=0.0035$). (C) Boxplots showing the relative *LRIG1* mRNA expression levels in the normal thyroid gland (n=12) and MTC (n=39) measured with quantitative RT-PCR. Shown are the relative *LRIG1/RN18S* ratios normalized to the corresponding level in human reference RNA that was arbitrarily set to the value of 1. The relative *LRIG1/RN18S* ratio was significantly lower in MTC than in normal thyroid glands ($P=0.00063$). Outlier values are marked °. (D) Boxplots showing *LRIG1* expression in MTC ordered by clinical stage. A higher clinical stage was not significantly associated with a lower *LRIG1* expression (Wilcoxon signed-rank test, $P=0.136$). PTC, papillary thyroid carcinoma; MTC, medullary thyroid carcinoma; *RET*, rearranged during transfection; LRIG1, leucine-rich repeats and immunoglobulin-like domains 1.

the patients were dead or alive at the latest follow-up ($P=0.036$ and $P=0.007$, respectively, χ^2 test). The patients who died during the follow-up period were older at the time of diagnosis than those still alive ($P<0.001$, Mann-Whitney U test), but the age distribution was similar across all categories for the fraction of LRIG1-positive cells and all of the intensities ($P=0.15$ and $P=0.12$, respectively, Kruskal-Wallis test). No other significant associations were found between LRIG1 immunoreactivity and the clinical parameters. The same analyses were performed including only PTC and FTC, since these entities have a more favorable clinical course. Both the percentage of positive cells and intensity of staining were still associated with whether the patients were dead or alive at the latest follow-up ($P=0.014$ and $P=0.002$, respectively, χ^2 test). The median follow-up time was 86 months for PFS, 96 months for DSS, and 96 months for OS. Survival analyses were performed for clinical stage, the percentage of LRIG1-positive cells and the intensity of LRIG1 staining. As expected, the clinical stage was a strong prognostic factor for OS, DSS and PFS, both when comparing all of the stages and when comparing stages I and II with stages III and IV (data not shown). No significant associations were found between LRIG1 immunoreactivity and the cumulative survival rates in Cohort3-TMA, both when analysing the whole cohort as well as when analysing PTC only (n=72). Performing

additional sub-group analysis for smaller groups was not relevant due to the limited size of each group.

Animal experiments. To experimentally address the role of LRIG1 in mutated RET-driven MTC, a mouse strain carrying a deficient *Lrig1* allele was crossed with a transgenic mouse strain that expresses human RET2B in thyroid parafollicular cells (C-cells) and is known to develop MTC or C-cell hyperplasia within 2-years and at high frequencies (13 and 77%, respectively) (34,35). The resulting offspring that were heterozygous for both the *Lrig1* and the *RET2B* alleles were crossed with heterozygous *Lrig1* mice to yield *Lrig1* wild-type, heterozygous, or knockout mice with or without the *RET2B* transgene (Fig. 4A). Only mice that were positive for the *RET2B* transgene were included in the study. In total, 125 mice were included, of which 46 (37%) were *Lrig1* wild-type, 49 (39%) were *Lrig1* heterozygous, and 30 (24%) were *Lrig1*-deficient. The mice were followed up for up to 2 years. Blood samples were obtained and calcitonin levels were measured every third month beginning at 6 months of age. Surprisingly, the plasma calcitonin levels were below the detection limit of the assay in all of the samples that were analyzed, except for four samples, which were calcitonin positive and represented three different mice. Of the three mice with elevated calcitonin

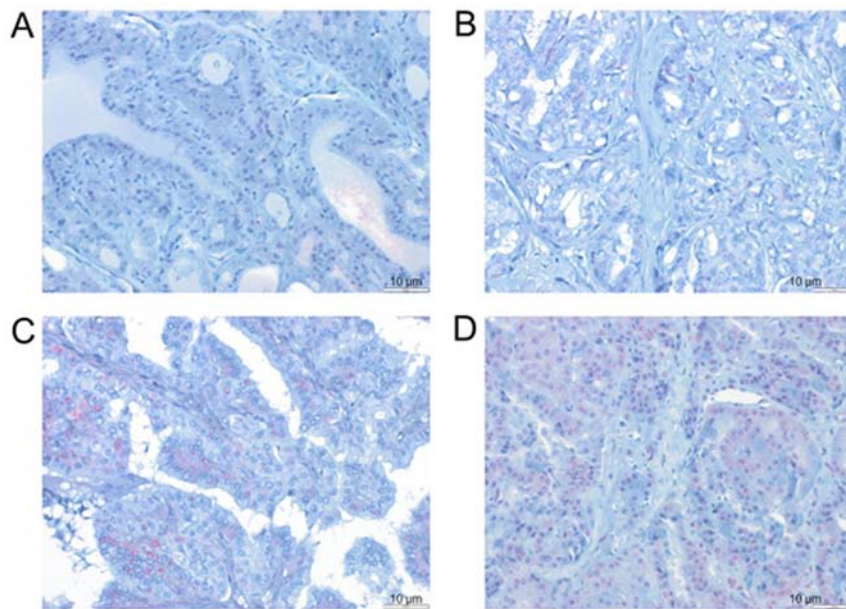


Figure 3. Examples of immunohistochemical stainings of LRIG1 in papillary thyroid carcinomas and their respective scores. (A) A tumor with no positive LRIG1 staining. (B) A tumor with weak LRIG1 staining intensity (1+) and 1-25% positive cells. (C) A tumor with intermediate LRIG1 staining intensity (2+) and 26-50% positive cells. (D) A tumor with intermediate LRIG1 staining intensity (2+) and 76-100% positive cells. Scale bars, 10 μ m. LRIG1, leucine-rich repeats and immunoglobulin-like domains 1.

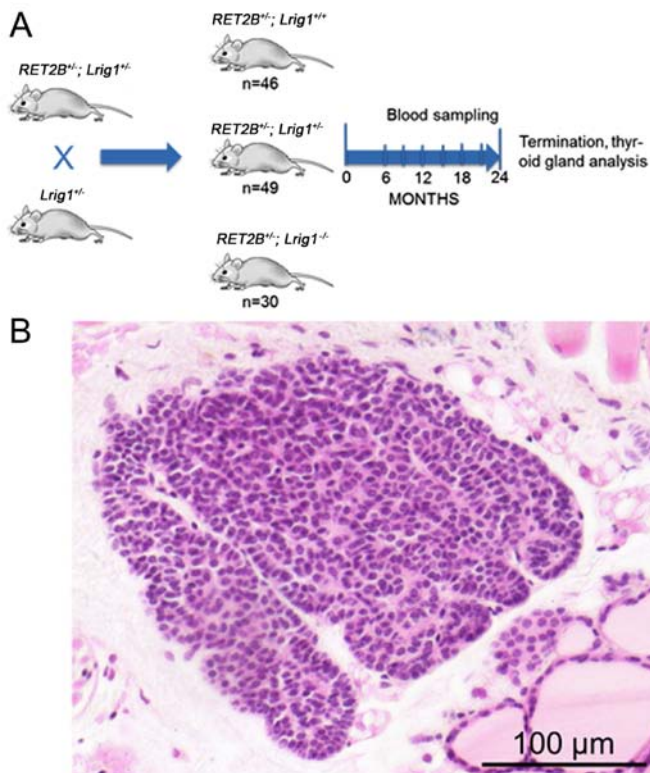


Figure 4. RET2B-induced thyroid gland lesions in mice. (A) A schematic drawing of the mouse experimental set-up. Mice with the genotypes *RET2B*^{+/+}; *Lrig1*^{+/+} and *Lrig1*^{+/-} were mated to generate offspring of the genotypes *RET2B*^{+/+}; *Lrig1*^{+/+}, *RET2B*^{+/+}; *Lrig1*^{+/-} and *RET2B*^{+/+}; *Lrig1*^{-/-}. The *RET2B*^{-/-} offspring were not included in the study. Beginning at 6 months of age, the blood was sampled every 3rd month and the calcitonin levels were determined. At 24 months of age or at signs of the disease, the mice were sacrificed and their thyroid glands were analyzed. A graphic mouse symbol was downloaded from <http://clipartall.com> and modified in Photoshop. (B) A micrograph showing an example of a hematoxylin and eosin-stained mouse thyroid gland with a pre-invasive lesion. Scale bars, 100 μ m. *Lrig1*, leucine-rich repeats and immunoglobulin-like domains 1; *RET*, rearranged during transfection.

levels, one was *Lrig1* wild-type and two were heterozygous for the *Lrig1* allele. Eleven of the 46 wild-type mice (24%), 8 of the 49 heterozygous mice (16%), and 7 of the 30 knockout mice (23%) died prematurely, that is, before the planned termination at 24 months. For most of the prematurely dead mice, the cause of death was undetermined; therefore, they were excluded from further analysis. At 24 months of age, the remaining mice were sacrificed and their thyroid glands were collected, formaldehyde-fixed, paraffin embedded, sectioned and routinely stained. Pre-invasive lesions were found in 13 of the 35 wild-type glands (37%), 12 of the 41 heterozygous glands (29%), and in 11 of the 23 *Lrig1*-deficient glands (48%) (Fig. 4B). The remaining 63 thyroid glands showed no evidence of pathological changes. The difference in the incidence of pre-invasive lesions between the wild-type and *Lrig1*-deficient mice was not statistically significant ($P=0.42$, χ^2 test). Furthermore, no overt cancers were observed.

Discussion

In this study, the importance of LRIG1 in thyroid cancer was investigated. We showed that LRIG1 physically interacted with and inhibited the activation of the MEN-associated and thyroid cancer-associated mutant RET receptors RET2A and RET2B and was downregulated in human PTC and MTC compared to normal thyroid gland tissues. However, in our mouse model of RET2B-driven MTC, no significant effect of *Lrig1* gene ablation was observed.

The interaction between LRIG1 and tyrosine kinase receptors has been described previously for normal RET (27), and here we showed similar interactions between LRIG1 and the mutated and oncogenic RET variants RET2A and RET2B. That is, LRIG1 physically interacted with both RET2A and RET2B, as well as inhibited their constitutive activation as monitored with receptor tyrosine phosphorylation blots. This

Table I. Clinical features of the patients in Cohort3-TMA.

Clinical features	No. of cases
TNM stage	
I	53
II	11
III	27
IV	27
Histology	
PTC	72
FTC	18
MTC	5
ATC	8
PDTC	4
FTC-oncocytic type	12
Deceased	
Yes	65
No	60
Deceased due to thyroid cancer	
Yes	25
No	100
Relapse	
Yes	37
No	88
Intensity of LRIG1 staining	
Absent	28
Weak	72
Moderate	18
Intense	0
Percentage of LRIG1-positive cells	
None	28
1-25%	18
26-50%	17
51-75%	25
76-100%	30
Sex	
Male	40
Female	85

PTC, papillary thyroid carcinoma; FTC, follicular thyroid carcinoma; MTC, medullary thyroid carcinoma; PDTC, poorly differentiated thyroid carcinoma; ACT, anaplastic thyroid carcinoma; LRIG1, leucine-rich repeats and immunoglobulin-like domains 1.

indicates that LRIG1 may play an important role in the initiation or progression of thyroid cancer because mutated RET receptors, including RET2A and RET2B, are established drivers of the majority of MTCs and of some PTCs. However, the RET fusion proteins found in PTC are cytosolic whereas LRIG1 is a transmembrane protein, and whether they functionally interact was not addressed in the present study. Nevertheless, altered signaling pathways in PTC, particularly activation of the MAPK signaling pathway, may be the result of other genetic events, such as activating mutations in BRAF and RAS genes (reviewed

in ref. 37). This activation may result in the upregulation of other oncogenic proteins, including other targets of LRIG1, such as the RTKs EGFR and MET. Thus, LRIG1 could be important in PTC through interactions with other proteins as well.

In Cohort1-TCGA, *LRIG1* expression data were available for 502 PTC cases but not for other thyroid cancer subtypes; whereas in Cohort2-MTC, we determined the *LRIG1* mRNA levels in 39 MTCs. Intriguingly, *LRIG1* was downregulated in both PTC and MTC compared to normal thyroid gland tissue. Because many PTCs have been reported to have a *RET* rearrangement and the majority of MTCs *de facto* showed a mutated *RET*, the downregulation of *LRIG1* expression seen supports the notion that *LRIG1* downregulation may play a causative role in the etiologies of PTC and MTC. However, as discussed above, this study does not provide evidence for a functional interaction between LRIG1 and the RET fusion proteins found in PTC; however, LRIG1 may possibly exert effects through interactions with other RTKs as well. Another important point is that the use of normal thyroid tissue as control for MTC may not be optimal, but microdissection of parafollicular cells for control was unfortunately not possible to obtain from this material. The IHC analysis of Cohort3-TMA revealed no association between LRIG1 immunoreactivity and patient survival. However, known prognostic factors, such as clinical stage and histological type, were confirmed to be predictive of patient survival in this cohort. Because the majority of cases in Cohort3-TMA (72/119) and all of the cases in Cohort1-TCGA were of the PTC subtype, the data indicate that neither the LRIG1 protein nor the *LRIG1* mRNA is prognostic in PTC. Although it could be argued that the material used for the IHC analysis was rather small (118 cases, in total), previous studies of similarly sized cohorts have shown significant associations between LRIG immunoreactivity and patient survival for other types of cancer (16,17,19,21,38-41). Therefore, the importance of the LRIG1 protein and RNA expression levels as prognostic markers in PTC may be of less interest for further study. Because of the relative rarity of MTC, only 5 of the 111 evaluated patients in Cohort3-TMA represented MTC cases, it was not possible to address the role of LRIG1 immunoreactivity as a prognostic marker in MTC in this material. However, since *LRIG1* mRNA was downregulated in MTC, it may be of interest to investigate the prognostic value of LRIG1 immunoreactivity in a larger MTC cohort.

The deletion of *Lrig1* did not affect the apparent tumor incidence or malignancy grade in the mouse model of RET2B-driven MTC. Our hypothesis was that *Lrig1*, through its suppression of RET2B, would serve as a tumor suppressor in this model system and, therefore, its deletion would enhance the incidence, progression, or severity of the disease. However, no such MTC promoting effects were observed in the *Lrig1*-deficient mice. One possible explanation for the lack of apparent effects of *Lrig1* ablation could be that *Lrig1* expression in the wild-type tumors was downregulated through tumor-intrinsic mechanisms, thereby obviating the need for and masking the effects of genetic ablation. This hypothesis is consistent with the strong downregulation of *LRIG1* expression that was seen in the human MTC series. Regrettably, we were unable to determine whether *Lrig1* expression was actually downregulated in the mouse tumors because the *Lrig1* expression levels could not be determined in the pre-invasive lesions in a reliable manner. Relatively, many of the mice (24%) died or had to be sacrificed before the planned

termination at 24 months of age. In most of these cases, the cause of premature death was undetermined. We do not know if the *RET2B* transgene caused an increased mortality rate among the experimental mice because no *RET2B*-negative control colonies were maintained in parallel with the *RET2B* transgenic experimental group. However, the cause of premature deaths is not likely to have been MTC because the plasma calcitonin levels were analyzed every third month and none of the prematurely dead mice showed increased plasma calcitonin levels prior to their death. In fact, detectable plasma calcitonin levels were observed in only 3 of the 99 (3%) mice. This is in contrast with a previous study, in which up to 90% of the *RET2B*-positive mice showed detectable plasma calcitonin levels by the age of 24 months (35). The reason for the observed difference in MTC incidence between the present study and the previous study is not known, but it could possibly be due to differences in the calcitonin assay-sensitivity due to different amounts of plasma available, animal housing conditions, or mouse strain differences. In both studies, the genetic backgrounds of the mice were mixed and thus, presumably not identical. Nevertheless, pre-invasive thyroid gland lesions were found in 37% of wild-type mice and in 48% of *Lrig1*-deficient mice. However, the slightly higher incidence of pre-invasive lesions among the *Lrig1*-deficient mice was not statistically significant. Thus, no effect of *Lrig1*-ablation could be demonstrated in our mouse model of *RET2B*-driven MTC.

In conclusion, our demonstration that LRIG1 negatively regulated the thyroid oncoproteins RET2A and RET2B and was also downregulated in PTC and MTC suggests that LRIG1 plays important roles in thyroid cancer. We believe that the possibility that the downregulation of LRIG1 is a critical tumor-promoting event during papillary and medullary thyroid carcinogenesis and that LRIG1-based therapies could be effective in PTC, MTC and/or other RET-driven cancers warrant further investigations. The concept of possible LRIG1-based therapies has been described in detail in a recent review, highlighting its possible role as a therapeutic inhibitor of receptor tyrosine kinase signaling (42). Further studies based on our findings may initially include cellular and animal studies testing the therapeutic potential of LRIG1 in cellular and animal models of PTC and MTC.

Acknowledgements

We would like to thank Sjors Fens, Yvonne Jonsson, Annika Holmberg, Charlotte Nordström, and Helena Hermelin for their technical help.

Funding

This study was supported by grants from the Swedish Society for Medical Research, the Swedish Cancer Society, the Cancer Research Foundation in Northern Sweden, the F Olaison Foundation, and through the regional agreement between Umeå University and Västerbotten County Council in cooperation in the fields of medicine, odontology and health.

Availability of data and materials

The materials included in the manuscript, including all relevant raw data, will be made freely available to any researchers

who wish to use them for non-commercial purposes, while preserving necessary confidentiality and anonymity.

Authors' contributions

DL, HH and RH coordinated the data collection, were responsible for the animal experiments, the collection of clinical data for cohort 3, carried out the statistical analyses, drafted the manuscript, and provided final approval for the submission. FCA and GP performed the cellular experiments, critically revised the manuscript, and provided final approval for the submission. CH collected the data for cohort 1, critically revised the manuscript, and provided final approval for the submission. CL and NW collected the data for cohort 2, critically revised the manuscript, and provided final approval for the submission. JH performed all calcitonin analyses and interpreted the data of these results, critically revised the manuscript, and provided final approval for the submission. MT and TT are senior pathologists and conducted the immunohistochemical evaluations, critically revised the manuscript, and provided final approval for the submission.

Ethics approval and consent to participate

The study was approved by the Regional Ethics Review Board in Uppsala (dnr 2010/351). Only patients who provided written informed consent were included in the study.

Consent for publication

Publication of the clinical datasets in this study does not compromise anonymity or confidentiality or breach local data protection laws.

Competing interests

The authors declare that they have no competing interests.

References

1. Ferlay J, Shin HR, Bray F, Forman D, Mathers C and Parkin DM: Estimates of worldwide burden of cancer in 2008: GLOBOCAN 2008. *Int J Cancer* 127: 2893-2917, 2010.
2. DeLellis R and Williams ED: Tumours of the thyroid and parathyroid. In: *World Health Organization Classification of Tumours. Pathology and Genetics of Tumours of Endocrine Organs*. DeLellis R and Williams ED (eds). Vol. 8. IARC Press, pp51-56, 2004.
3. Romei C, Fugazzola L, Puxeddu E, Frasca F, Viola D, Muzza M, Moretti S, Nicolosi ML, Giani C, Cirello V, *et al*: Modifications in the papillary thyroid cancer gene profile over the last 15 years. *J Clin Endocrinol Metab* 97: E1758-E1765, 2012.
4. Romei C, Ciampi R and Elisei R: A comprehensive overview of the role of the RET proto-oncogene in thyroid carcinoma. *Nat Rev Endocrinol* 12: 192-202, 2016.
5. Kouvaraki MA, Shapiro SE, Perrier ND, Cote GJ, Gagel RF, Hoff AO, Sherman SI, Lee JE and Evans DB: RET proto-oncogene: A review and update of genotype-phenotype correlations in hereditary medullary thyroid cancer and associated endocrine tumors. *Thyroid* 15: 531-544, 2005.
6. Nikiforov YE, Rowland JM, Bove KE, Monforte-Munoz H and Fagin JA: Distinct pattern of ret oncogene rearrangements in morphological variants of radiation-induced and sporadic thyroid papillary carcinomas in children. *Cancer Res* 57: 1690-1694, 1997.
7. Agrawal N AR, Aksoy BA, Ally A, Arachchi H, Asa SL, Auman JT, Balasundaram M, Balu S, Baylin SB, Behera M, *et al*: Integrated genomic characterization of papillary thyroid carcinoma. *Cell* 159: 676-690, 2014.

8. Network CGAR; Cancer Genome Atlas Research Network: Integrated genomic characterization of papillary thyroid carcinoma. *Cell* 159: 676-690, 2014.
9. Guo D, Holmlund C, Henriksson R and Hedman H: The LRIG gene family has three vertebrate paralogs widely expressed in human and mouse tissues and a homolog in Ascidiacea. *Genomics* 84: 157-165, 2004.
10. Holmlund C, Nilsson J, Guo D, Starefeldt A, Golovleva I, Henriksson R and Hedman H: Characterization and tissue-specific expression of human LRIG2. *Gene* 332: 35-43, 2004.
11. Nilsson J, Vallbo C, Guo D, Golovleva I, Hallberg B, Henriksson R and Hedman H: Cloning, characterization, and expression of human LRIG1. *Biochem Biophys Res Commun* 284: 1155-1161, 2001.
12. Wang Y, Poulin EJ and Coffey RJ: LRIG1 is a triple threat: ERBB negative regulator, intestinal stem cell marker and tumour suppressor. *Br J Cancer* 108: 1765-1770, 2013.
13. Lindquist D, Kvarnbrink S, Henriksson R and Hedman H: LRIG and cancer prognosis. *Acta Oncol* 53: 1135-1142, 2014.
14. Krig SR, Frietze S, Simion C, Miller JK, Fry WH, Rafidi H, Kotelawala L, Qi L, Griffith OL, Gray JW, *et al*: Lrig1 is an estrogen-regulated growth suppressor and correlates with longer relapse-free survival in ER α -positive breast cancer. *Mol Cancer Res* 9: 1406-1417, 2011.
15. Willis S, Villalobos VM, Gevaert O, Abramovitz M, Williams C, Sikic BI and Leyland-Jones B: Single Gene Prognostic Biomarkers in Ovarian Cancer: A Meta-Analysis. *PLoS One* 11: e0149183, 2016.
16. Lindström AK, Ekman K, Stendahl U, Tot T, Henriksson R, Hedman H and Hellberg D: LRIG1 and squamous epithelial uterine cervical cancer: Correlation to prognosis, other tumor markers, sex steroid hormones, and smoking. *Int J Gynecol Cancer* 18: 312-317, 2008.
17. Tanemura A, Nagasawa T, Inui S and Itami S: LRIG-1 provides a novel prognostic predictor in squamous cell carcinoma of the skin: Immunohistochemical analysis for 38 cases. *Dermatol Surg* 31: 423-430, 2005.
18. Lindquist D, Näsman A, Tarján M, Henriksson R, Tot T, Dalianis T and Hedman H: Expression of LRIG1 is associated with good prognosis and human papillomavirus status in oropharyngeal cancer. *Br J Cancer* 110: 1793-1800, 2014.
19. Sheu JJ, Lee CC, Hua CH, Li CI, Lai MT, Lee SC, Cheng J, Chen CM, Chan C, Chao SC, *et al*: LRIG1 modulates aggressiveness of head and neck cancers by regulating EGFR-MAPK-SPHK1 signaling and extracellular matrix remodeling. *Oncogene* 33: 1375-1384, 2014.
20. Kvarnbrink S, Karlsson T, Edlund K, Botling J, Lindquist D, Jirstrom K, Micke P, Henriksson R, Johansson M and Hedman H: LRIG1 is a prognostic biomarker in non-small cell lung cancer. *Acta Oncol* 54: 1113-1119, 2015.
21. Yang B, Dai C, Tan R, Zhang B, Meng X, Ye J, Wang X, Wei L, He F and Chen Z: Lrig1 is a positive prognostic marker in hepatocellular carcinoma. *Onco Targets Ther* 9: 7071-7079, 2016.
22. Gur G, Rubin C, Katz M, Amit I, Citri A, Nilsson J, Amariglio N, Henriksson R, Rechavi G, Hedman H, *et al*: LRIG1 restricts growth factor signaling by enhancing receptor ubiquitylation and degradation. *EMBO J* 23: 3270-3281, 2004.
23. Laederich MB, Funes-Duran M, Yen L, Ingalla E, Wu X, Carraway KL III and Sweeney C: The leucine-rich repeat protein LRIG1 is a negative regulator of ErbB family receptor tyrosine kinases. *J Biol Chem* 279: 47050-47056, 2004.
24. Miller JK, Shattuck DL, Ingalla EQ, Yen L, Borowsky AD, Young LJ, Cardiff RD, Carraway KL III and Sweeney C: Suppression of the negative regulator LRIG1 contributes to ErbB2 overexpression in breast cancer. *Cancer Res* 68: 8286-8294, 2008.
25. Stutz MA, Shattuck DL, Laederich MB, Carraway KL III and Sweeney C: LRIG1 negatively regulates the oncogenic EGF receptor mutant EGFRvIII. *Oncogene* 27: 5741-5752, 2008.
26. Shattuck DL, Miller JK, Laederich M, Funes M, Petersen H, Carraway KL III and Sweeney C: LRIG1 is a novel negative regulator of the Met receptor and opposes Met and Her2 synergy. *Mol Cell Biol* 27: 1934-1946, 2007.
27. Ledda F, Bieraugel O, Fard SS, Vilar M and Paratcha G: Lrig1 is an endogenous inhibitor of Ret receptor tyrosine kinase activation, downstream signaling, and biological responses to GDNF. *J Neurosci* 28: 39-49, 2008.
28. Rondahl V, Holmlund C, Karlsson T, Wang B, Faraz M, Henriksson R and Hedman H: Lrig2-deficient mice are protected against PDGFB-induced glioma. *PLoS One* 8: e73635, 2013.
29. Alsina FC, Hita FJ, Fontanet PA, Irala D, Hedman H, Ledda F and Paratcha G: Lrig1 is a cell-intrinsic modulator of hippocampal dendrite complexity and BDNF signaling. *EMBO Rep* 17: 601-616, 2016.
30. Nilsson J, Starefeldt A, Henriksson R and Hedman H: LRIG1 protein in human cells and tissues. *Cell Tissue Res* 312: 65-71, 2003.
31. Rossel M, Pasini A, Chappuis S, Geneste O, Fournier L, Schuffenecker I, Takahashi M, van Grunsven LA, Urdiales JL, Rudkin BB, *et al*: Distinct biological properties of two RET isoforms activated by MEN 2A and MEN 2B mutations. *Oncogene* 14: 265-275, 1997.
32. Santoro M, Carlomagno F, Romano A, Bottaro DP, Dathan NA, Grieco M, Fusco A, Vecchio G, Matoskova B, Kraus MH, *et al*: Activation of RET as a dominant transforming gene by germline mutations of MEN2A and MEN2B. *Science* 267: 381-383, 1995.
33. Wang N, Kjellin H, Sofiadis A, Fotouhi O, Juhlin CC, Bäckdahl M, Zedenius J, Xu D, Lehtiö J and Larsson C: Genetic and epigenetic background and protein expression profiles in relation to telomerase activation in medullary thyroid carcinoma. *Oncotarget* 7: 21332-21346, 2016.
34. Suzuki Y, Miura H, Tanemura A, Kobayashi K, Kondoh G, Sano S, Ozawa K, Inui S, Nakata A, Takagi T, *et al*: Targeted disruption of LRIG-1 gene results in psoriasiform epidermal hyperplasia. *FEBS Lett* 521: 67-71, 2002.
35. Acton DS, Velthuyzen D, Lips CJ and Höppener JW: Multiple endocrine neoplasia type 2B mutation in human RET oncogene induces medullary thyroid carcinoma in transgenic mice. *Oncogene* 19: 3121-3125, 2000.
36. van Veelen W, van Gasteren CJ, Acton DS, Franklin DS, Berger R, Lips CJ and Höppener JW: Synergistic effect of oncogenic RET and loss of p18 on medullary thyroid carcinoma development. *Cancer Res* 68: 1329-1337, 2008.
37. Xing M: Molecular pathogenesis and mechanisms of thyroid cancer. *Nat Rev Cancer* 13: 184-199, 2013.
38. Guo D, Nilsson J, Haapasalo H, Raheem O, Bergenheim T, Hedman H and Henriksson R: Perinuclear leucine-rich repeats and immunoglobulin-like domain proteins (LRIG1-3) as prognostic indicators in astrocytic tumors. *Acta Neuropathol* 111: 238-246, 2006.
39. Hedman H, Lindström AK, Tot T, Stendahl U, Henriksson R and Hellberg D: LRIG2 in contrast to LRIG1 predicts poor survival in early-stage squamous cell carcinoma of the uterine cervix. *Acta Oncol* 49: 812-815, 2010.
40. Holmlund C, Haapasalo H, Yi W, Raheem O, Brännström T, Brage H, Henriksson R and Hedman H: Cytoplasmic LRIG2 expression is associated with poor oligodendroglioma patient survival. *Neuropathology* 29: 242-247, 2009.
41. Muller S, Lindquist D, Kanter L, Flores-Staino C, Henriksson R, Hedman H and Andersson S: Expression of LRIG1 and LRIG3 correlates with human papillomavirus status and patient survival in cervical adenocarcinoma. *Int J Oncol* 42: 247-252, 2013.
42. Neirinckx V, Hedman H and Niclou SP: Harnessing LRIG1-mediated inhibition of receptor tyrosine kinases for cancer therapy. *Biochim Biophys Acta* 1868: 109-116, 2017.



This work is licensed under a Creative Commons Attribution-NonCommercial-NoDerivatives 4.0 International (CC BY-NC-ND 4.0) License.