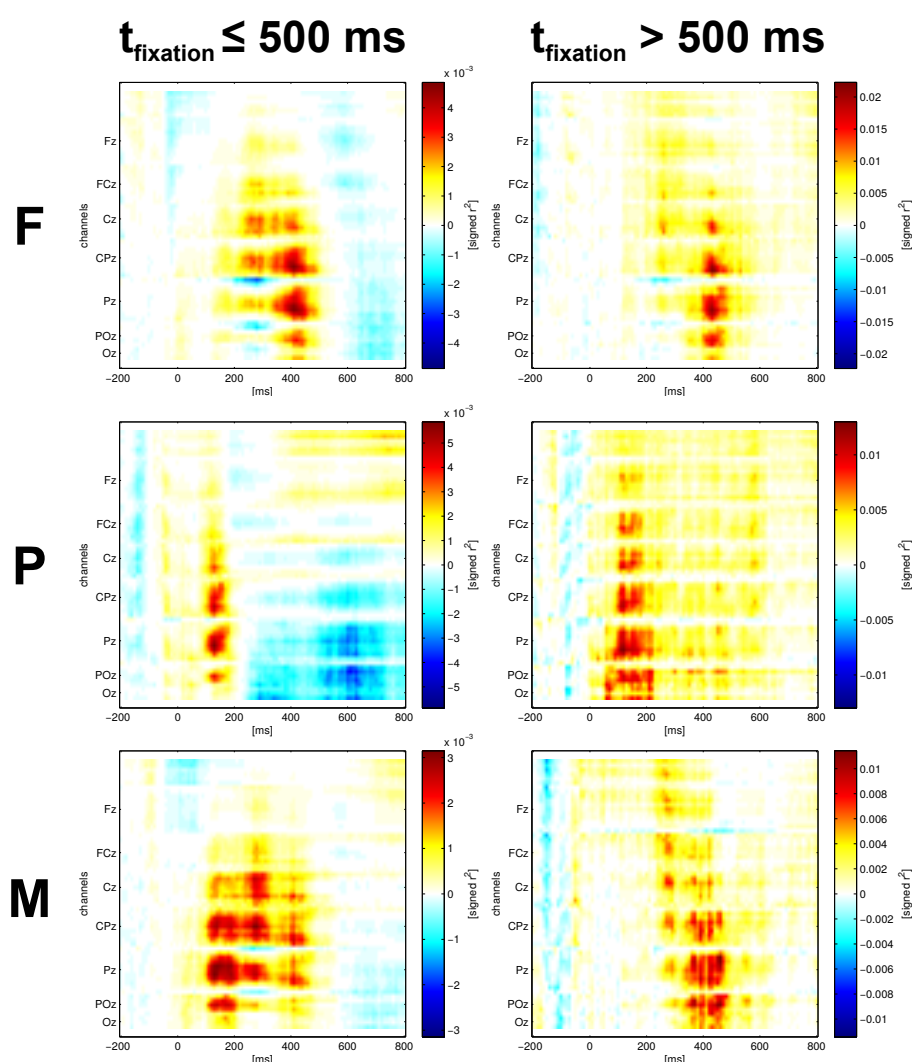


Supplementary Material: Classification of eye fixation related potentials for variable stimulus saliency

Markus A. Wenzel*, Jan-Eike Golenia and Benjamin Blankertz*

* markus.wenzel@tu-berlin.de, benjamin.blankertz@tu-berlin.de



Supplementary figure. Statistical differences between target and distractor (fixation-aligned) EEG epochs with a corresponding fixation duration shorter/longer than 500 ms. The rows show the results of the experimental conditions F, P and M. Compare with figure 5, column ‘Fixation’, in the paper. Note that only a small proportion of the EEG epochs remained with the criterion of > 500 ms because the items were inspected quicker in the majority of the cases.