

**UCC Library and UCC researchers have made this item openly available.
Please [let us know](#) how this has helped you. Thanks!**

Title	Isolation of novel gut bifidobacteria using a combination of metagenomic and cultivation approaches
Author(s)	Lugli, Gabriele Andrea; Milani, Christian; Duranti, Sabrina; Alessandri, Giulia; Turrone, Francesca; Mancabelli, Leonardo; Tatoni, Danilo; Ossiprandi, Maria Cristina; van Sinderen, Douwe; Ventura, Marco
Publication date	2019-05-16
Original citation	Lugli, G.A., Milani, C., Duranti, S., Alessandri, G., Turrone, F., Mancabelli, L., Tatoni, D., Ossiprandi, M.C., van Sinderen, D. and Ventura, M. (2019). 'Isolation of novel gut bifidobacteria using a combination of metagenomic and cultivation approaches'. <i>Genome biology</i> , 20(1), 96. (6pp.) DOI:10.1186/s13059-019-1711-6
Type of publication	Article (peer-reviewed)
Link to publisher's version	https://genomebiology.biomedcentral.com/articles/10.1186/s13059-019-1711-6 http://dx.doi.org/10.1186/s13059-019-1711-6 Access to the full text of the published version may require a subscription.
Rights	© The Author(s), 2019. This article is distributed under the terms of the Creative Commons Attribution 4.0 International License (http://creativecommons.org/licenses/by/4.0/), which permits unrestricted use, distribution, and reproduction in any medium, provided you give appropriate credit to the original author(s) and the source, provide a link to the Creative Commons license, and indicate if changes were made. The Creative Commons Public Domain Dedication waiver (http://creativecommons.org/publicdomain/zero/1.0/) applies to the data made available in this article, unless otherwise stated. https://creativecommons.org/licenses/by/4.0/
Item downloaded from	http://hdl.handle.net/10468/9129

Downloaded on 2020-06-06T00:59:26Z

SHORT REPORT

Open Access



Isolation of novel gut bifidobacteria using a combination of metagenomic and cultivation approaches

Gabriele Andrea Lugli¹, Christian Milani¹, Sabrina Duranti¹, Giulia Alessandri², Francesca Turroni^{1,3}, Leonardo Mancabelli¹, Danilo Tatoni¹, Maria Cristina Ossiprandi^{2,3}, Douwe van Sinderen⁴ and Marco Ventura^{1,3*} 

Abstract

Whole metagenome shotgun (WMGS) sequencing is a method that provides insights into the genomic composition and arrangement of complex microbial consortia. Here, we report how WMGS coupled with a cultivation approach allows the isolation of novel bifidobacteria from animal fecal samples. A combination of in silico analyses based on nucleotide and protein sequences facilitate the identification of genetic material belonging to putative novel species. Consequently, the prediction of metabolic properties by in silico analyses permits the identification of specific substrates that are then employed to isolate these species through a cultivation method.

Keywords: Genomics, Metagenomics, Microbiota, Human gut commensals

Background

Next-Generation Sequencing (NGS) technologies allow the generation of vast amounts of genomic data, facilitating a variety of DNA sequencing approaches that range from single genome sequencing to large-scale metagenomic studies [1]. While whole genome sequencing (WGS) reveals the complete genetic makeup of a specific organism, and the subsequent prediction of its biological features, the whole metagenome shotgun (WMGS) methodology provides genetic information about the abundant microorganisms present in a complex microbial consortium associated with a particular ecosystem based on the sequencing depth [2, 3]. Furthermore, through the reconstruction of sequenced DNA into consensus sequences, WMGS sequencing provides access to the genome content of yet uncultured bacteria, including novel species, which are otherwise very hard or even impossible to be identified by traditional culturing techniques [4–6].

Microorganisms are ubiquitous in nature, which means that they can be found everywhere. In this context, the

human body, as well as that of non-human animals, is inhabited by a plethora of microbial species that may co-exist with the host throughout its life span [7]. Most of the microbial communities that reside in the animal body are located in the large intestine, representing an estimated 10^{14} bacterial cells [8]. The gastrointestinal microbial community, also known as gut microbiota, exerts many important activities that support and preserve host health [9]. It is for this reason that the gut microbiota is the most extensively scrutinized microbial community (both in humans and other animals) through large-scale metagenomic studies [10]. As part of ongoing efforts to dissect the composition and associated activities of the gut microbiota, various studies have focused on the identification of novel bacterial species, whose genetic makeup is pivotal to unveil potential microbe-host interactions [11].

Recently, various strategies have been proposed for the enrichment of very low abundance strains from complex environmental matrices [12, 13]. However, these methodologies require a sequenced reference genome to perform DNA enrichment prior to sequencing. Besides, to explore such microbial dark matter, methodologies involving high-throughput culture conditions for the growth of bacteria followed by matrix-assisted laser desorption/ionization–time of flight (MALDI–TOF) or 16S rRNA amplification and sequencing have been employed [11, 14]. In this

* Correspondence: marco.ventura@unipr.it

¹Laboratory of Probiogenomics, Department of Chemistry, Life Sciences, and Environmental Sustainability, University of Parma, Parco Area delle Scienze 11a, 43124 Parma, Italy

³Microbiome Research Hub, University of Parma, Parma, Italy

Full list of author information is available at the end of the article



context, new bacterial species have been isolated, filling knowledge gaps regarding unknown microbial inhabitants of the human gut and allowing insights into the physiology of these taxa.

The focus of the current study was to apply WMGS sequencing in order to investigate the presence of novel gut commensals species belonging to the genus *Bifidobacterium* among the gut microbiota of animals. For this purpose, we sequenced and analyzed samples collected from banteng (*Bos javanicus*), Goeldi's marmoset (*Callimico goeldii*), and pygmy marmoset (*Callithrix pygmaea*) due to the high abundance of putative novel species of the genus *Bifidobacterium* as based on a previous study [15]. We therefore employed a custom-made METAnnotatorX pipeline [16] to screen the sequencing data of each sample

in order to retrieve genomic dark matter that was predicted to belong to the genus *Bifidobacterium*.

Results and discussion

WMGS sequencing of animal stool samples produced approximately 79 million of paired-end reads with an average length of ~150 bp (see Additional file 1: Supplementary Materials and Additional file 2: Table S1), which were analyzed through the METAnnotatorX pipeline. A preliminary screening of the obtained sequence reads revealed marked variations in the relative abundance of bifidobacteria between different samples analyzed, ranging from 0.1% in the *Bos* sample to 22.3 and 25% for *Callithrix* and *Callimico* samples, respectively (Fig. 1a). Due to the low abundance of

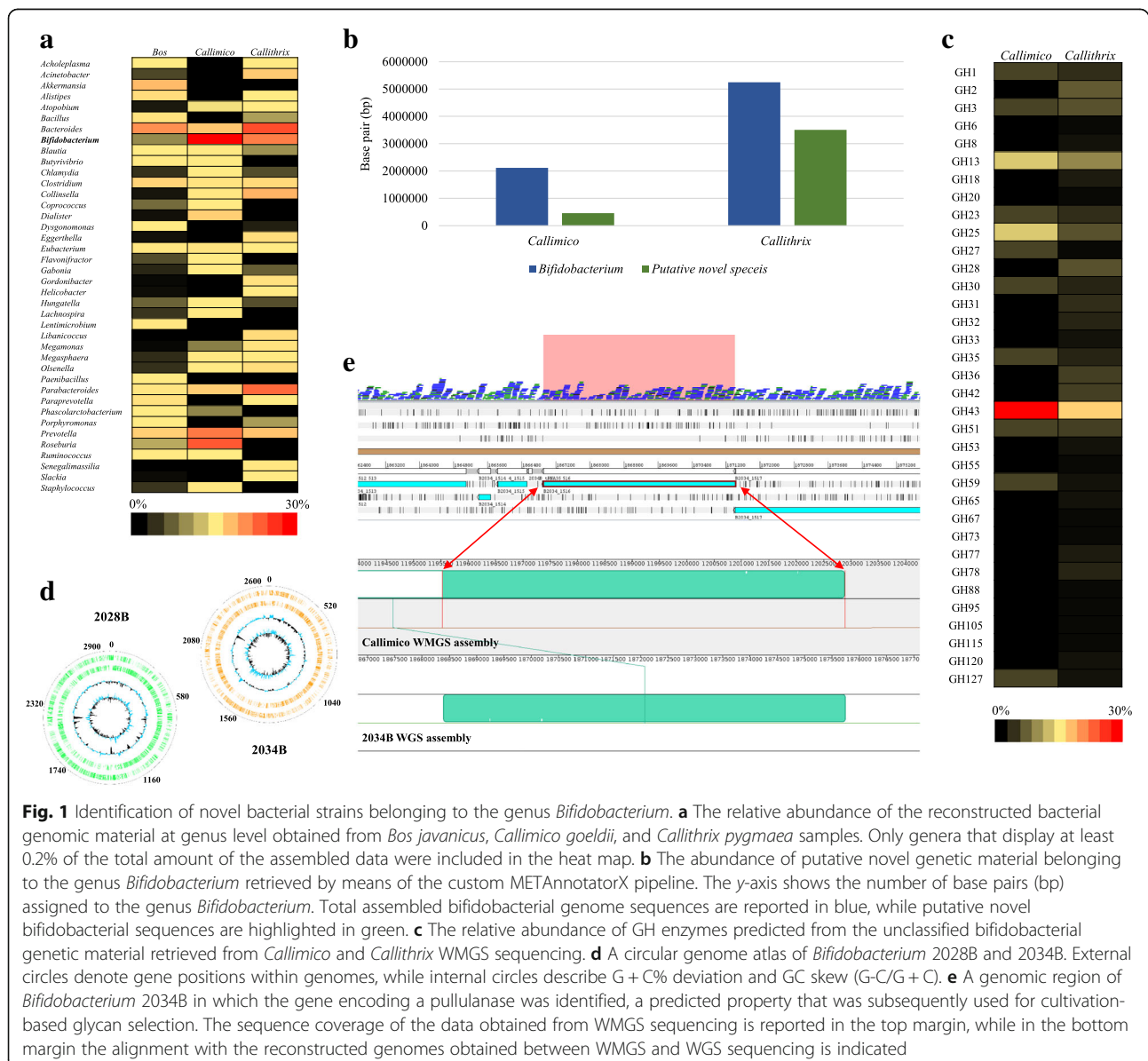


Fig. 1 Identification of novel bacterial strains belonging to the genus *Bifidobacterium*. **a** The relative abundance of the reconstructed bacterial genomic material at genus level obtained from *Bos javanicus*, *Callimico goeldii*, and *Callithrix pygmaea* samples. Only genera that display at least 0.2% of the total amount of the assembled data were included in the heat map. **b** The abundance of putative novel genetic material belonging to the genus *Bifidobacterium* retrieved by means of the custom METAnnotatorX pipeline. The y-axis shows the number of base pairs (bp) assigned to the genus *Bifidobacterium*. Total assembled bifidobacterial genome sequences are reported in blue, while putative novel bifidobacterial sequences are highlighted in green. **c** The relative abundance of GH enzymes predicted from the unclassified bifidobacterial genetic material retrieved from *Callimico* and *Callithrix* WMGS sequencing. **d** A circular genome atlas of *Bifidobacterium* 2028B and 2034B. External circles denote gene positions within genomes, while internal circles describe G + C% deviation and GC skew (G-C/G + C). **e** A genomic region of *Bifidobacterium* 2034B in which the gene encoding a pullulanase was identified, a predicted property that was subsequently used for cultivation-based glycan selection. The sequence coverage of the data obtained from WMGS sequencing is reported in the top margin, while in the bottom margin the alignment with the reconstructed genomes obtained between WMGS and WGS sequencing is indicated

bifidobacterial reads in the *Bos* sample, the metagenomic data were used to perform a validation screening aimed at revealing the minimum amount of genomic DNA needed to detect a specific taxon (Additional file 3: Figure S1). In the case of *Callithrix* and *Callimico*, metagenomic data were assembled, revealing more than 800 contigs (with a length of > 5000 bp) predicted to belong to the genus *Bifidobacterium*, taxonomically classified by means of the proteome of each contig (Fig. 1b).

To identify genomic contigs that putatively belong to unclassified bifidobacterial taxa, a custom script employing the results of the METAnnotatorX pipeline was implemented (Additional file 3: Figure S2). Starting from the collected bifidobacterial contigs, a comparison against three databases based on each bifidobacterial genomic sequence was performed (see Additional file 1: Supplementary Materials). Gene homology/protein similarity searches at both nucleotide and deduced protein level were carried out coupled with chromosomal sequence comparisons to discard contigs attributed to known species and closely related taxa. Thus, collected contigs belonging to unknown bifidobacterial species were reduced to 435 by manual removal of phage and plasmid sequences (Fig. 1b).

Predicted genes among the selected contigs were compared to a Glycosyl Hydrolase (GH) database to assess the glyco biome of the putative unknown bifidobacterial species. Based on the thus generated glyco biomes (Additional file 2: Table S2), we predicted that four glycans, i.e., arabinogalactan, pullulan, starch, and xylan, represented carbon sources for these putative novel bifidobacterial species (Fig. 1c). Thus, various cultivation experiments were performed, where aliquots of fecal samples from *Callimico* and *Callithrix* were added to a chemically defined medium (CDM), containing a specific glycan, as indicated above, as its sole carbon source (see Additional file 1: Supplementary Materials). These carbohydrate-specific cultivation experiments allowed the growth of 13 phenotypically different bifidobacterial isolates, which were able to metabolize the selected glycans. Subsequently, amplification and sequencing of the internal transcribed spacer (ITS) sequence of these isolates was performed, and the obtained ITS sequences were compared to a previously described ITS bifidobacterial database [15] (Additional file 2: Table S3). This procedure allowed the identification of two strains that do not belong to previously characterized bifidobacterial species [17]. The latter putative novel bifidobacterial isolates, named 2028B and 2034B, were subjected to WGS, which generated two genomes with a size of 2.96 and 2.61 Mb, respectively (Fig. 1d and Additional file 2: Table S4). Accordingly, novel bifidobacterial strains 2028B (=LMG 30938= CCUG 72814) and 2034B (=LMG 30939= CCUG 72815) were submitted to two public culture collections [18]. The reconstruction of

these genomes highlighted the presence of specific genes predicted to be responsible for the metabolism of the employed carbohydrate substrates as identified in the WMGS analyses, such as pullulanases and beta xylosidases. To validate the proposed approach, additional experiments were performed based on selective enrichment with inclusion in the medium of glucose, ribose, xylan, and pullulan as its unique carbon source based on the identified genes mentioned above (see Additional file 1: Supplementary Materials and Additional file 3: Figure S3). We observed more rigorous growth of strains 2028B and 2034B when cultivated on complex carbon sources, such as xylan and pullulan, as compared to glucose (Additional file 3: Figure S3a, S3b and S3c). Furthermore, the addition of complex carbon sources, i.e., xylan and pullulan, directly into the *Callimico* fecal sample resulted in an enrichment of these two strains, in particular strain 2034B in combination with pullulan, resulting in a one log increase in bacterial abundance as compared to medium containing glucose (i.e., from 8×10^5 to 4×10^6) (Additional file 3: Figure S3d). Despite the observed specificity in the isolation procedure of the two novel strains, it is worth mentioning that further microorganisms may grow in the selective media. To avoid this issue, mupirocin was added to the CDM (see Additional file 1: Supplementary Materials).

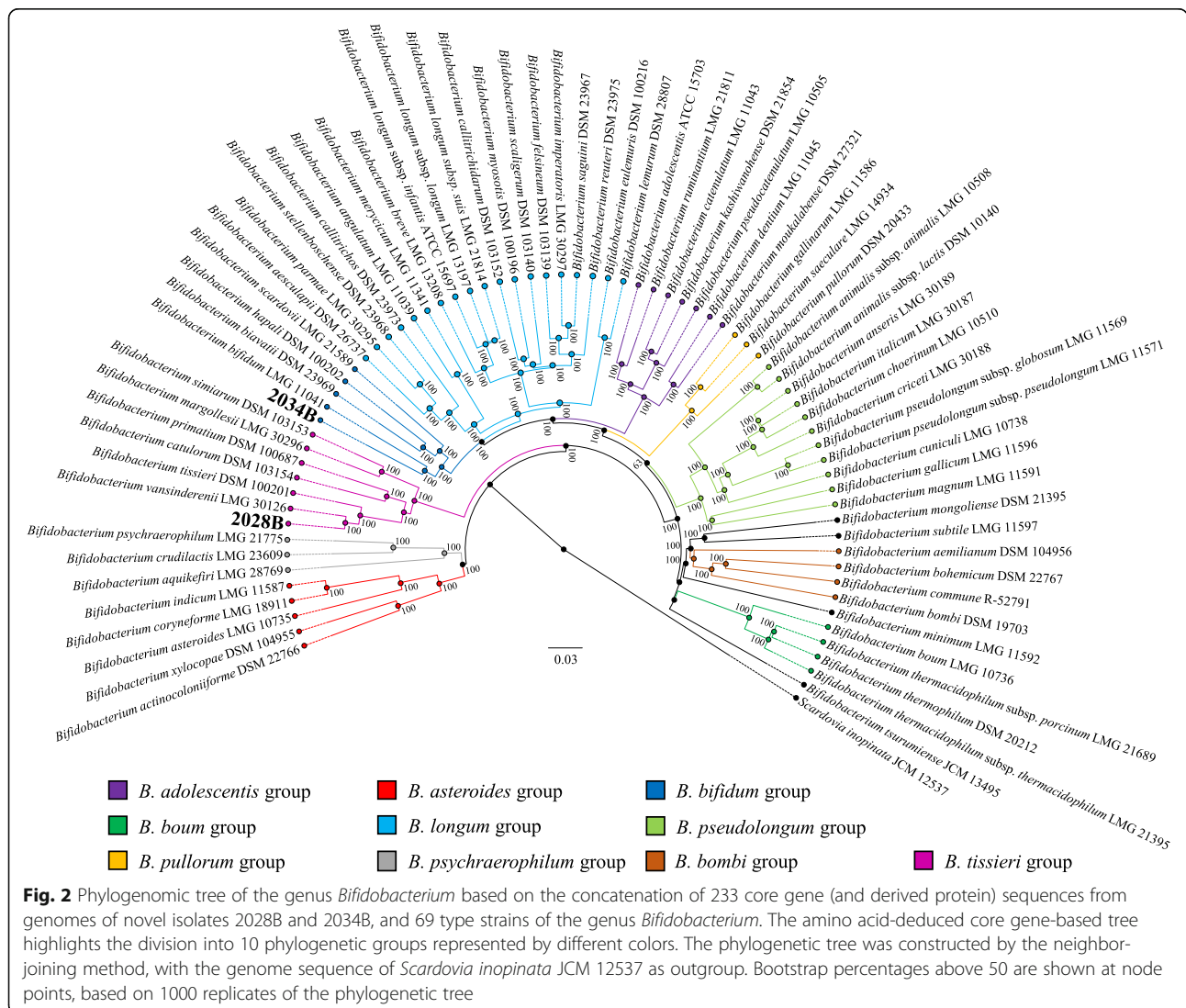
The average nucleotide identity (ANI) analysis of the here decoded genomes with all so far known bifidobacterial (sub)species [19], highlighted that strain 2028B possesses a 92.29% ANI value with respect to *Bifidobacterium vansinderenii* LMG 30126, while isolate 2034B exhibits an 87.32% ANI value with respect to *Bifidobacterium biavatii* DSM 23969 (Additional file 2: Table S5). Notably, two bacterial strains displaying an ANI value < 95% are considered to belong to distinct species [20]. Mapping WMGS reads among the reconstructed genome sequences of strains 2028B and 2034B revealed that both genomes were entirely covered by the sequenced paired-end reads of the *Callimico* sample with an average coverage of 8.8 and 8, respectively. Furthermore, alignment of the reconstructed chromosomes of strains 2028B and 2034B with the deduced contigs belonging to unknown bifidobacterial species of the *Callimico* sample allowed the identification of contigs that belong to the novel assembled genomes (Fig. 1e). Accordingly, the genetic repertoire of strains 2028B and 2034B, coupled to their metabolic abilities, allowed the isolation of these novel *Bifidobacterium* taxa.

The availability of 2028B and 2034B genome sequences also allowed us to investigate their phylogenetic relationship with each of the 69 currently recognized bifidobacterial taxa [19, 21]. A comparative genome analysis was undertaken to highlight orthologous genes between sequenced type strains of the genus

Bifidobacterium, resulting in 31,520 clusters of orthologous genes (COGs). The analyses allowed us to identify 261 COGs that were shared among all genomes, representing the bifidobacterial core genome. The concatenation of 233 core gene protein sequences (excluding 28 paralogs that were identified among type strains) allowed the construction of a bifidobacterial phylogenetic tree (Fig. 2). As shown in Fig. 2, strain 2034B clustered in the *Bifidobacterium bifidum* phylogenetic group [19], which also contains *B. biavatii* DSM 23969, whose relatedness has been highlighted in the ANI analysis (see above). Besides, strain 2028B grouped together with *B. vansinderenii* LMG 30126. Thus, based on these phylogenomic analyses, the relatedness among bifidobacterial type strains allowed the identification of a new phylogenetic cluster, which consists of strain 2028B plus six strains isolated from various monkey species [19, 21–23], here proposed to constitute the *Bifidobacterium tissieri* group (Fig. 2).

Conclusions

In the current study, we demonstrated how the implementation of selected tools for the identification of putative novel bacterial taxa from WMGS sequencing data allowed insights into the microbial dark matter of the mammalian gut. Based on the scientific field of interest, this approach can be applied to any bacterial genus for which several genome sequences have been decoded and for which there is just minimal knowledge on associated nutritional requirements. Thus, the predicted genetic makeup informs cultivation attempts to facilitate isolation of novel species of the examined genus. This approach was successfully applied to unravel the dark matter concerning key mammalian gut commensals belonging to the genus *Bifidobacterium* [15], ultimately resulting in the identification of two novel bifidobacterial species.



Additional files

Additional file 1: Supplementary materials. (DOCX 56 kb)

Additional file 2: Table S1. Metagenomic sequence data. **Table S2.** Predicted glyco biome of novel species. **Table S3.** ITS sequences of the 15 bifidobacterial isolates. **Table S4.** General genetic features. **Table S5.** Average Nucleotide Identity between bifidobacterial taxa. (XLSX 78 kb)

Additional file 3: Figure S1. Evaluation of the accuracy of METAnnotatorX in the detection of a specific species mixed within WMGS sequencing data of *Bos javanicus*. **Figure S2.** Workflow of the experiments. **Figure S3.** Viable cell counts and enrichment of novel bifidobacterial strains based on different carbon sources. **Figure S4.** Validation of the custom METAnnotatorX pipeline for the identification of novel bacterial species. (DOCX 1306 kb)

Abbreviations

ANI: Average nucleotide identity; CDM: Chemically defined medium; GH: Glycosyl hydrolases; ITS: Internal transcribed spacer; MRS: de Man-Rogosa-Sharpe; NGS: Next-generation sequencing; WGS: Whole genome sequencing; WMGS: Whole metagenome shotgun

Acknowledgements

We thank GenProbio srl for financial support of the Laboratory of Probiogenomics. Part of this research is conducted using the High Performance Computing (HPC) facility of the University of Parma. The authors declare that they have no competing interests.

Funding

This work was funded by the EU Joint Programming Initiative – A Healthy Diet for a Healthy Life (JPI HDHL, <http://www.healthydietforhealthylife.eu/>) to DvS (in conjunction with Science Foundation Ireland [SFI], Grant number 15/JPI-HDHL/3280) and to MV (in conjunction with MIUR, Italy). DvS is a member of The APC Microbiome Institute funded by Science Foundation Ireland (SFI), through the Irish Government's National Development Plan (Grant number SFI/12/RC/2273).

Availability of data and materials

Shotgun metagenomics data are accessible through BioProject PRJNA494387 at the NCBI SRA database [24]. Genome sequences of novel bifidobacterial taxa 2028B and 2034B were deposited at DDBJ/ENA/GenBank, available under accession numbers QXGJ000000000 [25], and QXGL000000000 [26]. The versions described in this paper are QXGJ01000000 and QXGL01000000. Custom script employing the results of the METAnnotatorX pipeline is available at GitHub with the GNU General Public License (<https://github.com/GabrieleAndrea/Novel-species-identifier>) [27] and at Zenodo (<https://zenodo.org/badge/latestdoi/185175819>) [28]. Additional third-party data were used to validate the custom script retrieved in the NCBI SRA database at BioProject PRJNA63661 [29].

Authors' contributions

GAL processed the metagenomic data, generated the custom script, conducted the analysis, and wrote the manuscript. CM participated in the design of the study and contributed to the manuscript preparation. SD and GA performed the experiments. FT and MCO participated in the design of the study. LM and DT contributed to generate the custom script. DvS participated and supervised the study. MV conceived the study, participated in its design and coordination, and contributed to the manuscript preparation. All authors have read and approved the final manuscript.

Ethics approval and consent to participate

Not applicable

Consent for publication

Not applicable

Competing interests

The authors declare that they have no competing interests.

Publisher's Note

Springer Nature remains neutral with regard to jurisdictional claims in published maps and institutional affiliations.

Author details

¹Laboratory of Probiogenomics, Department of Chemistry, Life Sciences, and Environmental Sustainability, University of Parma, Parco Area delle Scienze 11a, 43124 Parma, Italy. ²Department of Veterinary Medical Science, University of Parma, Parma, Italy. ³Microbiome Research Hub, University of Parma, Parma, Italy. ⁴APC Microbiome Institute and School of Microbiology, Bioscience Institute, National University of Ireland, Cork, Ireland.

Received: 6 November 2018 Accepted: 7 May 2019

Published online: 16 May 2019

References

- Koboldt DC, Steinberg KM, Larson DE, Wilson RK, Mardis ER. The next-generation sequencing revolution and its impact on genomics. *Cell*. 2013; 155:27–38.
- Paez-Espino D, Eloe-Fadrosh EA, Pavlopoulos GA, Thomas AD, Huntemann M, Mikhailova N, Rubin E, Ivanova NN, Kyrpides NC. Uncovering Earth's virome. *Nature*. 2016;536:425–30.
- Klemm E, Dougan G. Advances in understanding bacterial pathogenesis gained from whole-genome sequencing and phylogenetics. *Cell Host Microbe*. 2016;19:599–610.
- Kowarsky M, Camunas-Soler J, Kertesz M, De Vlaminc I, Koh W, Pan W, Martin L, Neff NF, Okamoto J, Wong RJ, et al. Numerous uncharacterized and highly divergent microbes which colonize humans are revealed by circulating cell-free DNA. *Proc Natl Acad Sci U S A*. 2017;114:9623–8.
- Nielsen HB, Almeida M, Juncker AS, Rasmussen S, Li J, Sunagawa S, Plichta DR, Gautier L, Pedersen AG, Le Chatelier E, et al. Identification and assembly of genomes and genetic elements in complex metagenomic samples without using reference genomes. *Nat Biotechnol*. 2014;32:822–8.
- Papudeshi B, Haggerty JM, Doane M, Morris MM, Walsh K, Beattie DT, Pande D, Zaeri P, Silva GGZ, Thompson F, et al. Optimizing and evaluating the reconstruction of metagenome-assembled microbial genomes. *BMC Genomics*. 2017;18:915.
- Milani C, Duranti S, Bottacini F, Casey E, Turrioni F, Mahony J, Belzer C, Delgado Palacios S, Arboleya Montes S, Mancabelli L, et al. The first microbial colonizers of the human gut: composition, activities, and health implications of the infant gut microbiota. *Microbiol Mol Biol Rev*. 2017;81(4):e00036–17.
- Yatsunenkov T, Rey FE, Manary MJ, Trehan I, Dominguez-Bello MG, Contreras M, Magris M, Hidalgo G, Baldassano RN, Anokhin AP, et al. Human gut microbiome viewed across age and geography. *Nature*. 2012;486:222–7.
- Lozupone CA, Stombaugh JI, Gordon JI, Jansson JK, Knight R. Diversity, stability and resilience of the human gut microbiota. *Nature*. 2012;489:220–30.
- Morgan XC, Huttenhower C. Meta-omic analytic techniques for studying the intestinal microbiome. *Gastroenterology*. 2014;146:1437–1448 e1431.
- Lagier JC, Khelaifia S, Alou MT, Ndongo S, Dione N, Hugon P, Caputo A, Cadoret F, Traore SI, Seck EH, et al. Culture of previously uncultured members of the human gut microbiota by culturomics. *Nat Microbiol*. 2016;1:16203.
- Vezzulli L, Grande C, Tassistro G, Brettar I, Hofle MG, Pereira RP, Mushi D, Pallavicini A, Vassallo P, Pruzzo C. Whole-genome enrichment provides deep insights into *Vibrio cholerae* metagenome from an African River. *Microb Ecol*. 2017;73:734–8.
- Maixner F, Krause-Kyora B, Turaev D, Herbig A, Hoopmann MR, Hallows JL, Kusebauch U, Vigl EE, Malfertheiner P, Megraud F, et al. The 5300-year-old *Helicobacter pylori* genome of the Iceman. *Science*. 2016;351:162–5.
- Mailhe M, Ricaboni D, Vitton V, Gonzalez JM, Bachar D, Dubourg G, Cadoret F, Robert C, Delerac J, Levasseur A, et al. Repertoire of the gut microbiota from stomach to colon using culturomics and next-generation sequencing. *BMC Microbiol*. 2018;18:157.
- Milani C, Mangifesta M, Mancabelli L, Lugli GA, James K, Duranti S, Turrioni F, Ferrario C, Ossiprandi MC, van Sinderen D, Ventura M. Unveiling bifidobacterial biogeography across the mammalian branch of the tree of life. *ISME J*. 2017;11(12):2834–47.
- Milani C, Casey E, Lugli GA, Moore R, Kaczorowska J, Feehily C, Mangifesta M, Mancabelli L, Duranti S, Turrioni F, et al. Tracing mother-infant transmission of bacteriophages by means of a novel analytical tool for shotgun metagenomic datasets: METAnnotatorX. *Microbiome*. 2018;6:145.

17. Milani C, Lugli GA, Turrioni F, Mancabelli L, Duranti S, Viappiani A, Mangifesta M, Segata N, van Sinderen D, Ventura M. Evaluation of bifidobacterial community composition in the human gut by means of a targeted amplicon sequencing (ITS) protocol. *FEMS Microbiol Ecol.* 2014;90:493–503.
18. Duranti S, Lugli GA, Napoli S, Anzalone R, Milani C, Mancabelli L, Alessandri G, Turrioni F, Ossiprandi MC, van Sinderen D, Ventura M. Characterization of the phylogenetic diversity of five novel species belonging to the genus *Bifidobacterium*: *Bifidobacterium castoris* sp. nov., *Bifidobacterium callimiconis* sp. nov., *Bifidobacterium goeldii* sp. nov., *Bifidobacterium samirii* sp. nov. and *Bifidobacterium dolichotidis* sp. nov. *Int J Syst Evol Microbiol.* 2019;69(5):1288–98.
19. Lugli GA, Milani C, Duranti S, Mancabelli L, Mangifesta M, Turrioni F, Viappiani A, van Sinderen D, Ventura M. Tracking the taxonomy of the genus *Bifidobacterium* based on a phylogenomic approach. *Appl Environ Microbiol.* 2018;84(4):e02249–17.
20. Konstantinidis KT, Tiedje JM. Genomic insights that advance the species definition for prokaryotes. *Proc Natl Acad Sci U S A.* 2005;102:2567–72.
21. Modesto M, Puglisi E, Bonetti A, Michelini S, Spiezo C, Sandri C, Sgorbati B, Morelli L, Mattarelli P. *Bifidobacterium primatium* sp. nov., *Bifidobacterium scaligerum* sp. nov., *Bifidobacterium felsineum* sp. nov. and *Bifidobacterium simiarum* sp. nov.: four novel taxa isolated from the faeces of the cotton top tamarin (*Saguinus oedipus*) and the emperor tamarin (*Saguinus imperator*). *Syst Appl Microbiol.* 2018;41:593–603.
22. Lugli GA, Mangifesta M, Duranti S, Anzalone R, Milani C, Mancabelli L, Alessandri G, Turrioni F, Ossiprandi MC, van Sinderen D, Ventura M. Phylogenetic classification of six novel species belonging to the genus *Bifidobacterium* comprising *Bifidobacterium anseris* sp. nov., *Bifidobacterium criceti* sp. nov., *Bifidobacterium imperatoris* sp. nov., *Bifidobacterium italicum* sp. nov., *Bifidobacterium margollesii* sp. nov. and *Bifidobacterium parmae* sp. nov. *Syst Appl Microbiol.* 2018;41:173–83.
23. Duranti S, Mangifesta M, Lugli GA, Turrioni F, Anzalone R, Milani C, Mancabelli L, Ossiprandi MC, Ventura M. *Bifidobacterium vansinderenii* sp. nov., isolated from faeces of emperor tamarin (*Saguinus imperator*). *Int J Syst Evol Microbiol.* 2017;67(10):3987–95.
24. Lugli GA, Milani C, Duranti S, Alessandri G, Turrioni F, Mancabelli L, Tatoni D, Ossiprandi MC, van Sinderen D, Ventura M: Beyond the tip of the iceberg: illuminating bacterial dark matter through a combination of metagenomics and culturomic approaches. NCBI Bioproject PRJNA494387. 2019. <https://www.ncbi.nlm.nih.gov/bioproject/494387>.
25. Lugli GA, Duranti S, Milani C. Characterization of the phylogenetic diversity of novel *Bifidobacterium* species 2028B. NCBI. <https://www.ncbi.nlm.nih.gov/nuccore/QXGJ00000000>. Accessed 17 Dec 2018.
26. Lugli GA, Duranti S, Milani C. Characterization of the phylogenetic diversity of novel *Bifidobacterium* species 2034B. NCBI. <https://www.ncbi.nlm.nih.gov/nuccore/QXGL00000000>. Accessed 17 Dec 2018.
27. Lugli GA, Milani C, Duranti S, Alessandri G, Turrioni F, Mancabelli L, Tatoni D, Ossiprandi MC, van Sinderen D, Ventura M. Novel species identifier - METAnnotatorX custom-made script. GitHub repository. 2019; <https://github.com/GabrieleAndrea/Novel-species-identifier>. Accessed 6 May 2019.
28. Lugli GA, Milani C, Duranti S, Alessandri G, Turrioni F, Mancabelli L, Tatoni D, Ossiprandi MC, van Sinderen D, Ventura M. Novel species identifier - METAnnotatorX custom-made script. Zenodo. 2019; <https://zenodo.org/badge/latestdoi/185175819>. Accessed 6 May 2019.
29. Broad Institute: Microbial composition of samples from infant gut. NCBI Bioproject PRJNA63661 2011. <https://www.ncbi.nlm.nih.gov/bioproject/63661>.

Ready to submit your research? Choose BMC and benefit from:

- fast, convenient online submission
- thorough peer review by experienced researchers in your field
- rapid publication on acceptance
- support for research data, including large and complex data types
- gold Open Access which fosters wider collaboration and increased citations
- maximum visibility for your research: over 100M website views per year

At BMC, research is always in progress.

Learn more biomedcentral.com/submissions

