



Preanalytical Processing and Biobanking Procedures of Biological Samples for Metabolomics Research: A White Paper, Community Perspective (for “Precision Medicine and Pharmacometabolomics Task Group” –The Metabolomics Society Initiative)

Jennifer A. Kirwan,^{1,2*} Lorraine Brennan,³ David Broadhurst,⁴ Oliver Fiehn,⁵ Marta Cascante,⁶ Warwick B. Dunn,⁷ Michael A. Schmidt,^{8,9} and Vidya Velagapudi^{10*}

BACKGROUND: The metabolome of any given biological system contains a diverse range of low molecular weight molecules (metabolites), whose abundances can be affected by the timing and method of sample collection, storage, and handling. Thus, it is necessary to consider the requirements for preanalytical processes and biobanking in metabolomics research. Poor practice can create bias and have deleterious effects on the robustness and reproducibility of acquired data.

CONTENT: This review presents both current practice and latest evidence on preanalytical processes and biobanking of samples intended for metabolomics measurement of common biofluids and tissues. It highlights areas requiring more validation and research and provides some evidence-based guidelines on best practices.

SUMMARY: Although many researchers and biobanking personnel are familiar with the necessity of standardizing sample collection procedures at the axiomatic level (e.g., fasting status, time of day, “time to freezer,” sample volume), other less obvious factors can also negatively affect the validity of a study, such as vial size, material and batch, centrifuge speeds, storage temperature, time and

conditions, and even environmental changes in the collection room. Any biobank or research study should establish and follow a well-defined and validated protocol for the collection of samples for metabolomics research. This protocol should be fully documented in any resulting study and should involve all stakeholders in its design. The use of samples that have been collected using standardized and validated protocols is a prerequisite to enable robust biological interpretation unhindered by unnecessary preanalytical factors that may complicate data analysis and interpretation.

© 2018 American Association for Clinical Chemistry

The preanalytical steps in specimen acquisition and processing are among the most crucial for producing reliable analytical results and are highly vulnerable to the introduction of experimental bias and variance. Such steps must be conducted rigorously to preserve the intrinsic value of the resulting specimen repository or biobank. Biobanks are facilities where carefully collected and curated biological samples are stored and distributed for research purposes according to approved protocols. The samples themselves are linked to metadata, such as age, sex, ethnicity, health status, and potentially medical records of the sample donor.

The number of biobanks around the world has increased (1), reflecting the growing awareness of the need for epidemiological scaled “omics” analyses. This growth has been organic rather than structured, leading to several differing sample collection and processing protocols. Increasingly, there have been attempts (e.g., International Agency for Research on Cancer biobank, Promoting Harmonization of Epidemiological Biobanks in Europe, Biobanking and Biomolecular Resources Research Infrastructure) (2–4) to harmonize and rationalize multicentric sample collection and storage protocols. This reduces interbiobank variability, thus improving comparability of observations seen between multicenter projects.

¹ Berlin Institute of Health, Berlin, Germany; ² Max Delbrück Center for Molecular Medicine, Berlin-Buch, Germany; ³ UCD School of Agriculture and Food Science, Institute of Food and Health, UCD, Dublin, Ireland; ⁴ School of Science, Edith Cowan University, Perth, Australia; ⁵ NIH West Coast Metabolomics Center, UC Davis, Davis, CA; ⁶ Department of Biochemistry and Molecular Biomedicine and IBUB, Universitat de Barcelona, Barcelona and Centro de Investigación Biomédica en Red en Enfermedades Hepáticas y Digestivas (CIBER-EHD), Madrid, Spain; ⁷ School of Biosciences and Phenome Centre Birmingham, University of Birmingham, Birmingham, UK; ⁸ Advanced Pattern Analysis and Countermeasures Group, Research Innovation Center, Colorado State University, Fort Collins, CO; ⁹ Sovaaris Aerospace, LLC, Boulder, CO; ¹⁰ Metabolomics Unit, Institute for Molecular Medicine FIMM, HiLIFE, University of Helsinki, Helsinki, Finland.

* Address correspondence to: V.V. at Metabolomics Unit, Institute for Molecular Medicine FIMM, University of Helsinki, HiLIFE, P.O. Box 20, Helsinki 00014, Finland. E-mail vidya.velagapudi@helsinki.fi; J.K. at BIH Metabolomics Platform, Max Delbrück Center for Molecular Medicine, Robert-Rössle-Str. 10, 13125 Berlin-Buch, Germany. E-mail jennifer.kirwan@mdc-berlin.de.

Received January 31, 2018; accepted May 1, 2018.

Previously published online at DOI: 10.1373/clinchem.2018.287045

© 2018 American Association for Clinical Chemistry

Most existing biobanks were established for epidemiological purposes with either genomics or more traditional scientific analyses in mind; however, the collection requirements for DNA extraction and analyses are fundamentally different than those of metabolomics because DNA extraction is comparatively more robust (e.g., it is still possible to achieve high yields of representative good-quality DNA from blood even after 24-h storage at room temperature) (5). By comparison, metabolism can continue in tissues or biofluids even after collection. For subsequent measurements to be meaningful, the metabolome at the time of extraction and analysis should reflect as closely as possible the original *in vivo* metabolome. During the sample collection, the concentrations of metabolites may change because of ongoing enzymatic activities, exposure to oxygen, UV light, or temperature (6–8). Protocols must reduce such effects to a minimum and, when unavoidable, standardize exposure of samples to such factors. Importantly, protocols should provide evidence of experimental validation, especially robustness and reproducibility of data for all protocols designed to collect and store metabolomics samples. Fully validated protocols (8, 9) enhance confidence among researchers and promote a gradual rationalization of protocols toward “best practice.” We define a validated collection protocol as one where all steps have been tested for reproducibility and robustness specifically on the sample types being collected, with an effort to optimize these steps, including, wherever possible, well-planned comparisons with alternative methods. There should also be a documented awareness of the limitations of the protocol in place, especially when compromises have been made because of practical considerations.

There are 3 key considerations for any sample collection used in metabolomics research:

- Samples should be collected in a reproducible manner within and between different collection sites using the same detailed protocols and the same consumables (including brand and preferably batch number).
- Collected and stored samples should represent the *in vivo* situation as closely as possible.
- The practicalities of sample collection should be considered in protocol design so that sufficient numbers of samples can be collected with ease.

A schematic of the various stages of the biobanking process is shown in Fig. 1.

Variables that have been shown to affect the measured metabolome in a variety of tissue and biofluid types include age, sex, weight, whether breast-fed (infants), diet, ethnicity, smoking history, environment, time of day, time of year, fasting state, current medications (including nonprescription medications and dietary supplements), physical activity, occupation, and geographic location (10–20). These details, along with a sample of

stool or information on the gut microbiome, should always be recorded when biobanking samples and, when possible, standardized within any individual study. For women, recording the day of her menstrual cycle (and any chemical contraception being used) should be routine because it may affect the metabolome of some biofluids (e.g., as observed in plasma) (10).

Samples should be stored as multiple representative aliquots, when possible, because multiple freeze–thaw cycles may be detrimental to individual metabolites (21). To be considered representative, an aliquot must be taken from a freshly mixed sample because of the tendency of biofluids to settle quickly. Consideration should be given to the size of the aliquot and the size and type of vial it will be stored in, as a large dead space volume can affect sublimation of CO₂ in long-term storage (9) and certain vial materials are known to contaminate samples (22).

A design consideration for sample collection that is often overlooked but is of vital importance is the decision as to whether targeted or untargeted analysis is to be performed. Untargeted analysis would generally seek the greatest molecular feature diversity and the features most reflective of the specimen. Sample collection and processing would be devised accordingly. Targeted analyses may be willing to sacrifice breadth and diversity of molecular features in favor of preselected analytes of interest and optimize the processing and analytical methods best suited for their measurement. A variation on this would be the use of targeted analysis to capture analytes of interest, while simultaneously examining the untargeted metabolome to provide context (23). In such cases, sample acquisition and processing methods that optimize for both needs may be warranted.

In this review, we examine current practice in biobanking samples for metabolomics and the evidence base behind the choices that have been made in defining the protocols, and make recommendations as to the need for further research. A collection of protocols in use for different tissue and biofluid types is summarized in Tables 1, 2, and 3.

Statistical Considerations

It is important to emphasize the importance of validated biobanking protocols with respect to the concept of robust and reproducible scientific discovery, and the statistical inference on whether an observed effect is real, a result of random chance, or a statistical error. Discovery through random chance has been discussed previously and, therefore, is not included (24) in this review; however, false discovery owing to statistical error is often the result of inconsistent or biased sample collection. Inconsistent (imprecise) sample collection can increase biological variance to the point that a given study is underpow-

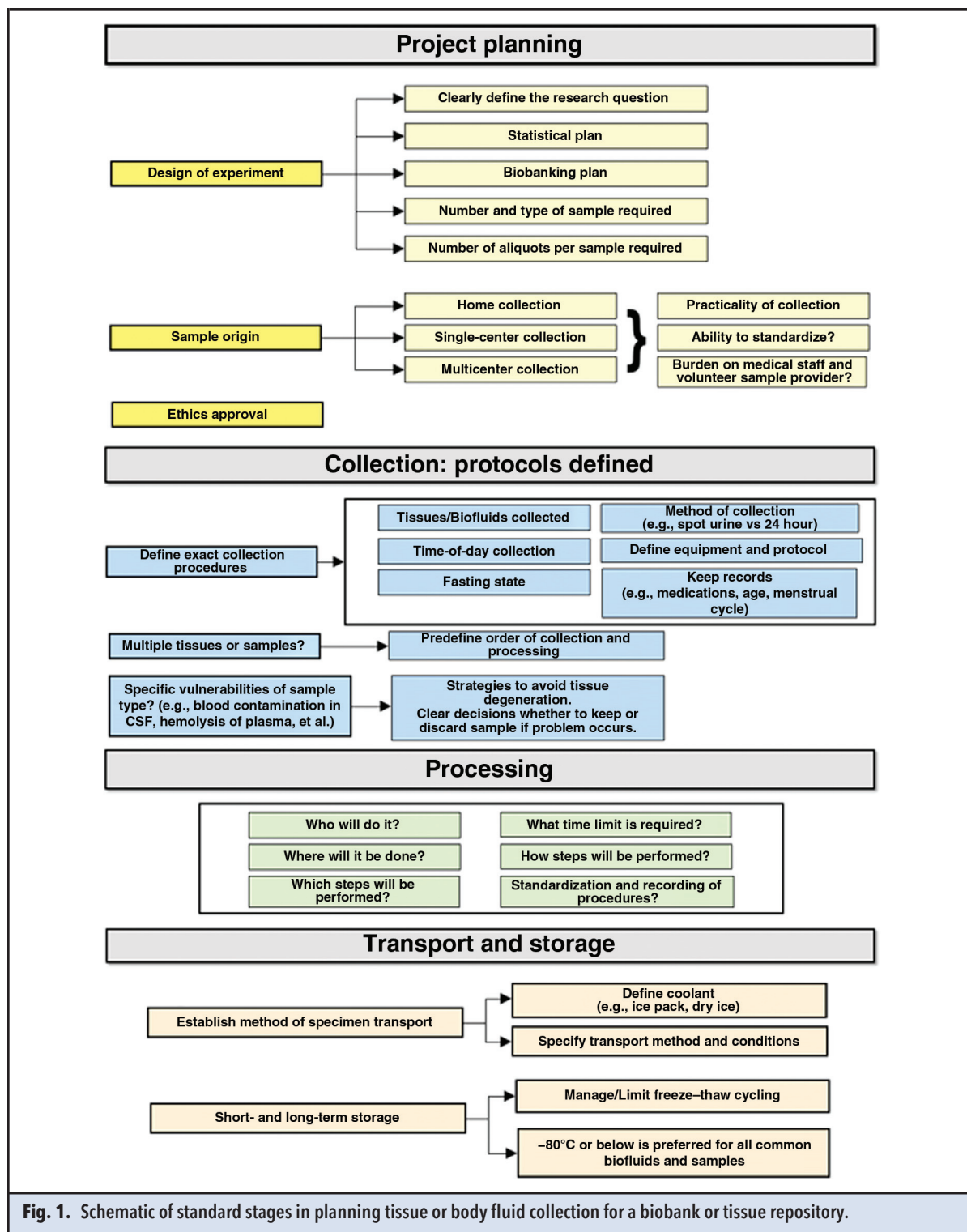


Table 1. Examples of protocols for tissue and biofluid collection for which validation is medium to high.

Tissue	Collection method	Time at 4 °C	Centrifugation before storage	Storage conditions	Biological variants discovered	Additional information	References
Serum/plasma	Venipuncture from arm; vein in inner elbow region is most appropriate and, if not possible, then from vein on the back of the hand (UK Biobank)	Blood samples to be stored at room temperature for up to 40 min maximum (HMGU) ^a ; this includes clotting time for serum. This is followed by centrifugation at room temperature for 2750g for 10 min (HMGU) or 2500g for 10 min (UK Biobank). Samples are then stored at 4 °C and then on dry ice for transportation and subsequent processing (UK Biobank) or can be further processed and plasma or serum aliquoted into cryovials immediately (HMGU). Samples should be stored for longer periods after processing at -80 °C	2500g (HMGU) or 2750g (UK Biobank) for 10 min at room temperature	-80 °C	If stored at room temperature for considerable time, then instability of metabolites has been reported	Many external and internal factors have been shown to influence the metabolite composition of blood including fed/fasted status, age, gender, BMI ^b , diet, ethnicity, etc.	(154, 155)
Urine	Collection in sterile container if possible at 4 °C (if not, ice pack will suffice for up to 8 h)	Minimize the time at 4 °C if possible; no longer than 8 h	Centrifugation is recognized as essential; protocols vary	-80 °C	Fasting samples are recommended; collection first thing in the morning is recommended (first void)	Dietary records or diet standardization is recommended, as diet is known to influence the urinary metabolome	(13, 80, 84)
Liver	Surgery (biopsy) or autopsy; in percutaneous biopsy, a gauge spring-loaded and cutting needle is passed under local anesthesia with an ultrasound guidance to collect the liver tissue samples	None Flash-frozen in liquid nitrogen quickly after collection	Most protocols do not use centrifugation step	-70 °C to -80 °C	Diet-induced variations in certain metabolites was reported	In post mortem tissue analyses, metabolomic data normalization should consider the time since death	(13, 80, 82, 156-158)
Muscle	Muscles were removed by surgery and trimmed of excess fat and connective tissue	None Flash-frozen in liquid nitrogen quickly after collection	Not reported	-80 °C	Age-related variations in certain metabolites were reported	Sterile instruments should be used to avoid contamination	(159-161)
Brain	Perfused tissue collection is preferred to nonperfused to reduce contamination of tissue with blood metabolites	None Flash-frozen in liquid nitrogen quickly after collection	Not reported	-80 °C		PBS or isotonic saline has been used as perfusion agent, but has not been validated for metabolomics	(64, 160, 162)

Continued on page 1162

Table 1. Examples of protocols for tissue and biofluid collection for which validation is medium to high. (Continued from page 1161)

Tissue	Collection method	Time at 4 °C	Centrifugation before storage	Storage conditions	Biological variants discovered	Additional information	References
Colorectal tissues	Normally taken by pinch biopsies (~150–400 mg) from several locations of colon or rectum during colorectal resection	None Flash-frozen in liquid nitrogen quickly after collection	Not reported	–80 °C			(163–165)
Placenta	Placentas were normally sampled at 3 placental lobes; a sampling frame with intersecting lines was placed at the decidual surface, and chorionic plate was removed; the villous tissue was dissected into explants weighing approximately 10 mg per fragment	Flash frozen at –80 °C	Not standardly reported	–80 °C	Central placental lobes sampling was deemed the most representative and reproducible location to reflect optimal placental function	Placentas were collected within 20 min of delivery	(166, 167)
Lung	Surgical resection or core needle biopsy; tissue collection immediately after removal from thoracic cavity and flash-frozen in liquid N ₂ ; both tumor and adjacent and distal nontumorous tissue should be sampled	None; flash-freeze in liquid nitrogen after blotting and rinsing in PBS Store at 77 K (–196 °C)	No	77 K (–196 °C)	Tissue at room temperature changes rapidly; freezing should be done in the OR ^c as soon as possible	Typically within 5 min of resection	(75, 168, 169)

^a Helmholtz Zentrum Muenchen fuer Gesundheit und Umwelt.

^b Body mass index.

^c Operating room.

Table 2. Examples of protocols for tissue and biofluid collection for which further validation is strongly recommended.

Tissue	Collection method examples	Range of temperatures before processing	Centrifugation ranges before storage	Storage condition ranges	Reported consequences	Biological variants discovered	Additional information	References
Saliva	Stimulated and nonstimulated methods exist; nonstimulated potentially better	4 °C for between <30 min and <24 h; shorter periods likely to be preferable but not fully validated	Between 1 to 20 min at 1000-2600g; before freezing may be preferable but not fully validated	-20 to -80 °C	Cells in the sample will degrade if at room temperature, so centrifuging is crucial step; storage at temperatures lower than -80 °C will change the pH	Large interindividual and intraindividual variation not reduced by standardizing diet for 24 h	Prerinse and abstinence from oral products food and smoking may be important but unvalidated	(12, 13, 110, 111, 117, 120)
CSF	Lumbar puncture	Centrifuge as quickly as possible after collection; freeze within 1 h	2000g for 10 min at 4 °C before freezing	-80 °C		Age, diet, diurnal and seasonal variations in certain metabolites reported	Discard first 2 mL of CSF	(9, 122-124)
Sweat	Induction via chemical stimulation with pilocarpine most common (also heat or exercise); collection normally with purpose designed instrument or absorbent material	Avoiding evaporation of sweat before volume accurately calculated is most important consideration; working temperatures following collection are often not recorded	Not standardly used but has been used to prevent epithelial cell contamination	Normally -80 °C	Varying interindividual sweat rates	pH can vary widely so acid and bases; standard range of biological variants are seen in sweat	Skin should be clean and free from topical products before measuring	(170-176)
Milk	Self-expression or breast pump, use of fore or hind milk should be specifically stated	Freeze as soon as possible after collection because of risk of degradation	Most protocols do not use centrifugation	Between -18 (home freezer) and -80 °C; -80 °C should be used for medium- and long-term storage	Freezing agglutinates micelles and reduces risk of insoluble particles in solvent extraction	Lactation stage heavily influences profile; mothers with premature babies have different milk profiles than term mothers at the same lactation stage; "secretor" and "non secretor" have different profiles in oligosaccharides	When milk is taken, record which breast, day of lactation, hours after last feed, and what part of milk is used	(177-181)
Lacrimal	Rubbing inferior meniscus and collecting lacrimal secretions using a micro Pasteur pipette/Schirmer strips (free catch reported but not yet used for metabolomics)	Freeze as soon as possible after collection because of risk of degradation	Not standardly reported	-80 °C or colder	Tears are laden with enzymes that may degrade the sample			(137, 182)
Endometrial/peritoneal fluids	Normally taken transvaginally using an embryo transfer catheter (endometrial fluid) or at laparoscopy using a syringe or suction device (peritoneal fluid)	4 °C or on ice until processed (which should occur as soon as possible)	Yes, but values are not standardized	-80 °C or colder	Molecular profile of peritoneal lavage fluid may change dependent on method used	Peritoneal fluid increases in follicular phase of the menstrual cycle	Record day of menstrual cycle	(115)

Continued on page 1164

Table 2. Examples of protocols for tissue and biofluid collection for which further validation is strongly recommended. (Continued from page 1163)

Tissue	Collection method examples	Range of temperatures before processing	Centrifugation ranges before storage	Storage condition ranges	Reported consequences	Biological variants discovered	Additional information	References
Microdialysate	Microdialysis catheter has a semipermeable membrane tip that can be placed in the tissue of interest; an aqueous fluid is infused through the tip, metabolites in the extracellular membrane passively diffuse over the membrane and up through a separate channel in the catheter where they can be subsequently collected for analysis	Often not recorded, but ideally should be collected on ice given the long collection periods that often occur	Not validated	Not validated	Having a low flow rate of the microdialysis fluid enables better equilibration between tissue and microdialysate		Focal technique, which may be of interest to researchers studying localized reactions; Not used much for metabolomics	(143, 144, 183, 184)
Breath and volatiles	Exhaled breath condensate collected by use of a precooled closed condenser design system made from inert materials with a filter to remove environmental contaminants	Collect on dry ice and immediately freeze on collection to preserve volatiles; freeze-drying has been proposed to concentrate samples but not yet validated; note temperature of collection (and ambient temperature, as this creates the temperature gradient); use nose clips and saliva traps	Not standard, has not been validated for metabolomics	Coldest available (−80 °C or lower)	Food and drink significantly affect measurements	Leukotrienes degrade within a few months of storage	Degassing to remove CO ₂ may reduce variability in analysis because of pH but is not validated; other methods of collecting breath and volatiles also exist	(147, 148)
Heart	Cardiac biopsies (~100 mg) collected from the epicardial surface; some methods recommend rinsing with PBS after removal	Frozen in liquid nitrogen	Not reported	−80 °C or colder		Gender-specific changes in metabolite profiles were observed		(185–187)
Pancreas	Biopsy or autopsy (directly excised using scissors)	Flash-frozen in liquid nitrogen	Not reported	−80 °C				(188, 189)
Eyes	Enucleation was performed and ocular tissues (cornea, lens, vitreous, and retina) were carefully dissected under microscopic guidance; however, some performed retinal dissection in ice-cold PBS (in mmol/L: 137 NaCl, 2.7 KCl, 10 Na ₂ HPO ₄ , 1.8 KH ₂ PO ₄ , pH 7.4)	All dissections were performed on a cold plate to maintain a temperature of approximately 4 °C, and dissection time was between 2 and 5 min; after that, the samples were flash-frozen in liquid nitrogen	Not reported	−80 °C	Waste products of metabolism from cornea and lens are secreted into the aqueous humor and vitreous directly or move into the vitreous indirectly via diffusion, which can cause the similarities between the metabolites found in these 3 tissues		Enucleation should be performed as soon as possible (between 1 and 20 min) after the death	(190, 191)

Continued on page 1165

Table 2. Examples of protocols for tissue and biofluid collection for which further validation is strongly recommended. (Continued from page 1164)

Tissue	Collection method examples	Range of temperatures before processing	Centrifugation ranges before storage	Storage condition ranges	Reported consequences	Biological variants discovered	Additional information	References
Endometrium	Laparoscopic surgery using endometrial sampling device or Pipelle catheter (a plastic tube withdrawn to create suction, rotated and moved outward to collect small pieces of endometrial tissues) are commonly used methods	Frozen in liquid nitrogen	Not reported	-80 °C	Extraction and storage should occur within 15 min to minimize enzymatic degradation		Menstrual phase should be determined from an endometrium sample	(192, 193)
Spleen	Biopsy or autopsy (directly excised using scissors)	Flash-frozen in liquid nitrogen	Not reported	-80 °C				(194-196)
Kidney	Biopsy (skin is cleaned using alcohol swab; incision is made to cut open skin and muscle to expose the kidney to collect target region)	Flash-frozen in liquid nitrogen	Not reported	-80 °C	Well-known heterogeneity for different regions		Body temperature should be monitored and controlled	(65)
Testes	Biopsies or surgical explorations	Flash-frozen in liquid nitrogen	Not reported	-80 °C				(197, 198)
Intestine	Normally removed surgically, flushed with PBS	Flash-frozen in liquid nitrogen	Most of the protocols do not use centrifugation step	-80 °C				(156)
Adipose	Biopsy (a gauge needle is inserted into the subcutaneous fat, and 5 mL of 0.9% sodium chloride is injected; a syringe with locking piston is used to create a vacuum and a back-and-forth motion used to harvest the tissue; once the tissue has been aspirated, the needle is withdrawn and the piston removed)	Flash-frozen in liquid nitrogen within 45 min	Not reported	-80 °C			Tissues were collected after an overnight fast	(199)
Esophagus	(a) Endoscopically during staging laparoscopy under a general anesthetic; (b) during endoscopic ultrasound staging under sedation; or (c) surgical specimens retrieved immediately after esophagectomy	Immediately frozen in liquid nitrogen after dissection	Not reported	-80 °C			Tissues were collected after an overnight fast	(200)

Continued on page 1166

Table 2. Examples of protocols for tissue and biofluid collection for which further validation is strongly recommended. (Continued from page 1165)

Tissue	Collection method examples	Range of temperatures before processing	Centrifugation ranges before storage	Storage condition ranges	Reported consequences	Biological variants discovered	Additional information	References
Dried blood spots	Do not use the tip of center of the finger; do not use the second (index) and fifth (small) finger; avoid the side of the finger, and use the top of the finger and a lancet to pierce the finger (perpendicular to the fingerprint ridges); press the finger and wipe away the first drop of blood; hold the finger over the card, and when a drop is present, then place drop onto card but do not press finger onto card; collect 3 drops; allow blood spot to dry for a minimum of 3 h at room temperature, and do not speed up drying with additional heat	Room temperature appears appropriate for short-term storage but further evidence/stability studies required	Not required	Long-term stability studies not currently published for nontargeted metabolomics; stability of specific analytes has been shown for room temperature or reduced temperatures for up to years	Long-term storage at room temperature can be performed; storage at reduced temperatures recommended if stored in a sealed bag with a desiccant	Many external and internal factors have been shown to influence the metabolite composition of blood, including fed/fasted status, age, gender, BMI ^a , diet, ethnicity, etc.	Not applicable	(201)

^a Body mass index.

Table 3. Summary of preanalytical methods for the collection and storage of fecal samples.

Source	Population	Sampling method	Storage and preparation parameters			
			Sampling temperature	Preservation temperature	Processing method	
¹ H-NMR	CD ^a and UC ^b	Stool	Frozen at -80 °C immediately	-80 °C	Fecal water derived from weighed sample of bulk stool	
	Healthy	Stool	Homogenized and frozen immediately	-20 °C	Lyophilized	
	Healthy	Stool	NA ^c	NA	Fecal water	
	CC ^d	Stool	-20 °C for 24–48 h; transported on ice	-70 °C	Fecal water derived from frozen, homogenized bulk stool	
	CC	Stool	-20 °C for 1 h	-80 °C	5 g of sample extracted from frozen bulk stool and homogenized to produce fecal water	
	IBS ^e and UC	Stool	Ice for 2 h	-70 °C	Fecal water	
	Active or inactive human UC and CD subjects	Bulk stool	Ice for <3 h	-80 °C	Fecal water derived from weighed sample of bulk stool	
	Healthy—optimized sample collection and management	Stool	Ice for 1 h; extracted within 24 h of collection	-20 °C or more; avoid free-thaw cycles	Fecal water	
	GC-MS	Healthy	Stool	Aliquoted and frozen at -80 °C after defecation	-80 °C	Fecal water derived from homogenized 5–8-g samples of stool
		Healthy	Stool	Processed immediately after collection	-80 °C	Fecal water from homogenized bulk stool
IBS and non-IBS		Stool	Frozen immediately at -20 °C	-80 °C	Fecal water derived from homogenized 0.1-g stool isolates	
Neonatal ICU ^f infants		Stool	Frozen immediately at -80 °C	-80 °C	Lyophilized just before analysis	
<i>Cryptosporidium</i> positive and negative		Stool	Stored at 4 °C	-80 °C	Fecal water derived from 250 mg (wet weight) lyophilized feces	
Healthy and CC		Stool	Transported to lab within 24 h	-20 °C	Bulk stool homogenized; 3 samples taken with swabs; samples lyophilized	
Healthy		Stool	Feces pooled from 2 males, 2 females, and lyophilized	NA	Lyophilized	
Healthy and CC		Stool	Frozen at home on dry ice	-40 °C	100 mg of lyophilized feces	
Healthy		Stool	Frozen immediately at -80 °C	-80 °C	Dried under vacuum	
UC and CD		Stool volatiles	Submitted with 6 h of collection	-20 °C	Headspace gases	

Continued on page 1168

Table 3. Summary of preanalytical methods for the collection and storage of fecal samples. (Continued from page 1167)

Storage and preparation parameters					
Source	Population	Sampling method	Sampling temperature	Preservation temperature	Processing method
LC-MS Cao et al., 2011 (214)	LC ^a with hepatocellular carcinoma and healthy	Stool	Aliquoted and frozen immediately after defecation	-80 °C	Fecal water
Girlanda et al., 2012 (215)	Intestinal transplant: rejection vs nonrejection	Ileostomy fluid or stool	Stored at 4 °C for <12 h collection	-80 °C	Fecal water
Huang et al., 2013 (216)	LC and healthy	Stool	Aliquoted and frozen immediately after defecation	-80 °C	Fecal water extracted taking a weighed sample of aliquoted, thawed stool
Loffield et al., 2016 (99)	Healthy	Stool	Freeze 1- to 2-g aliquots within 30 min of bulk stool collection at -80 °C	-80 °C	Compare frozen (no solution) with 95% ethanol, FOBT ^c , FIT ^d
CE-MS ^e Tomitsuka et al., 2017 (217)	Healthy individuals on low and normal protein diets	Stool	Transported to the lab and cooled (about 7 h) in Anaero Packs (Mitsubishi Gas Chemical); 2.0 g of total then frozen in liquid nitrogen dry vapor, transported further at -150 °C and then stored at -80 °C before processing	-80 °C	Fecal water extracted in PBS using 0.5 mg of feces in 1 mL of PBS; centrifuged and filtered

^a Crohn disease.
^b Ulcerative colitis.
^c Not reported.
^d Colorectal cancer.
^e Irritable bowel syndrome.
^f Intensive care unit.
^g Liver cirrhosis.
^h Fecal occult blood test.
ⁱ Fecal immunochemical test.
^j Capillary electrophoresis-mass spectrometry.

ered, resulting in a much higher probability of false-negative findings (type II error). Similarly, systematic differences in sample collection (e.g., disease samples collected using a different protocol than for control samples) result in biased statistical analysis, often with 100% confounding factors, which increases the probability of both false-positive and false-negative results (type I and II error). These issues have been discussed at great length previously (25), but it is important to note that compounding multiple errors, because of collection variance at multiple stages of the complete work flow, will rapidly inflate the probability of false discovery. As such, detailed consideration should be given to validating and optimizing each step of the work flow and ensuring consistent collection and processing of samples through standard operating procedures and staff training.

Preanalytical Processing and Biobanking of Serum, Plasma, and Dried Blood Spots

Blood-based biofluids and urine are the most frequently collected human samples in metabolomic and epidemiological studies. These biofluids provide a “global” view of metabolism operating in multiple different tissues and organs and are relatively easy to collect. No single best practice protocol is currently established, and samples are typically collected according to standard blood collection protocols (Table 1). However, as discussed below, there are several considerations when assessing the applicability of blood collection and processing for samples already collected or for samples to be collected in the future. Consistency is important whichever collection strategy is used.

Large biobank repositories containing blood products (serum and plasma) are available for researchers to access samples (e.g., the UK Biobank contains serum and plasma samples for 500 000 individuals) (26). Trained phlebotomists normally collect blood, although the alternative option of dried blood spot (DBS)¹¹ collection is available. DBS offers an opportunity for collection in environments away from the clinic, without the presence of trained staff and without the time-related requirement of sample centrifugation and processing. A lancet is used to provide a finger prick to produce a small volume of blood (up to 25 μ L typically), which is physically spotted onto filter paper-based collection cards (e.g., GE Healthcare's Whatman 903 cards) (27) and then allowed to dry before storage (28, 29). This option allows for collection of samples across a time series by the subject, and samples can be sent via postal services for storage in clinical bio-

banks (e.g., a targeted vitamin D assay is operated in this way) (30). Most applications focus on a targeted set of metabolites including amino acids and acylcarnitines for inborn errors of metabolism testing (31, 32) or drugs and their metabolites in drug metabolism and pharmacokinetic studies (33). The hematocrit in the blood spot and sample stability (34, 35) are important factors to consider. Although the use of DBS for untargeted metabolomics applications is not frequently used (36), there is a growing interest in its potential use because DBS offers some advantages over plasma and serum and removes several preanalytical factors discussed below. However, 1 major consideration is the stability of DBS at different drying times, drying and storage temperatures, and storage times (35, 36). Further investigations of the stability of different metabolite classes or individual key metabolites are required before epidemiological studies using DBS can be performed.

Collection of Blood Products

Plasma and serum can be considered as 2 different biofluids both originating from blood. Plasma is collected using anticoagulants and, thus, preserves most clotting factors, whereas serum is produced using a natural blood clotting process. The question of whether serum or plasma should be collected is important because the production of serum involves coagulation, whereas plasma does not. The time and temperature allowed for coagulation are important preanalytical factors to consider and should be standardized for sample processing. Special care should be taken during drawing and handling of samples to avoid hemolysis. The release of hemoglobin and other intracellular components from erythrocytes can markedly alter plasma/serum metabolomic profiles (37, 38); thus, hemolyzed blood samples should be avoided in metabolomics studies. Studies comparing serum and plasma from the same individuals have described only small qualitative and quantitative differences for the metabolite composition of the 2 biofluids, and this variability is less when comparing with the biological variability observed between different persons (39–41). For example, higher concentrations of some metabolites have been reported for serum compared with plasma collected from the same individuals; in 1 study, 9 metabolites were reported to have >20% greater concentrations in serum than in plasma including amino acids (glycine, serine, phenylalanine, and arginine), lysoglycerophospholipids (C16:0, C17:0, C18:0, and C18:1), and glycerophosphatidylcholines (C38:1) (39). Therefore, there is no clear conclusion on which biofluid to collect, although the same biofluid should be used in any single study. Plasma may have some advantages over serum, as a more standardized collection and extraction procedure

¹¹ Nonstandard abbreviations: DBS, dried blood spot; NMR, nuclear magnetic resonance; FOBT, fecal occult blood test; FIT, fecal immunochemical test; CSF, cerebrospinal fluid.

can be used without concern regarding how the clotting procedure may influence the metabolome (42).

The collection of blood and its processing should be performed according to standard protocols (Table 1). Preanalytical factors are important for blood, which is metabolically active, primarily through cellular metabolism (especially erythrocytes), to ensure that the postprocessed sample is a qualitative and quantitative representation of the sample at the time of collection (43).

Time of Sample Collection

The time of day a blood sample is collected can influence the quantitative composition of serum and plasma samples as shown by several diurnal studies (11, 44, 45). The time of day and season were not significant sources of variation in 1 study, but it is recognized that this finding is not conclusive for all studies, and a standardized collection within the same time of day and in either fasted or fed status is recommended (46).

Type of Plasma Collection Tube

Three standard types of anticoagulants can be applied for collection of plasma samples: lithium (or sodium) heparin, sodium citrate, and potassium ethylenediaminetetraacetic acid (EDTA) (30). Citrate and EDTA are low molecular weight chemicals and can interfere in the detection of metabolites in untargeted metabolomics studies and will also be detected by most analytical platforms. In addition, 2 further disadvantages of citrate include that it is an endogenous metabolite and that it can alter the pH of the sample and, therefore, the extraction conditions (47). Heparin is not detected in a typical untargeted metabolomics assay, which is advantageous, although the introduction of lithium into the sample can result in unwanted lithium adducts in mass spectrometric analyses. EDTA-based samples are also used frequently and may be more advantageous if concurrent proteomics is planned with the same sample.

Type of Serum Collection Tube

There are 2 types of serum collection tubes: gel-free and gel-containing (polymeric) tubes (48). The quality of these tubes is important, and the use of gel-free tubes removes the possibility of sample contamination from the gel (polymer). Lopez et al. assessed polymeric and nonpolymeric tubes for serum and EDTA plasma processing and showed no differences in the metabolic profile for plasma EDTA tubes but did show differences between polymeric and nonpolymeric tubes for serum, although no preferred tube was indicated (49).

Inversion of Plasma Tubes

Tubes are inverted gently several times to allow mixing of anticoagulants with whole blood, and a lack of standardization of this process can be expected to influence the qualitative and quantitative composition of the processed plasma sample.

Processing Location, Temperature, and Time Intervals

Whole blood can be processed at the site of sample collection or at a central processing facility (50, 51). Studies have investigated whether transport to a central processing facility can be undertaken rather than rapid processing and concluded that, if samples were stored cold (4 °C), delayed processing had only minor influences on the metabolic profile, and the differences observed related to processing were much smaller than intersubject differences (21, 52). Processing should be undertaken before freezing the samples because freezing whole erythrocytes will result in their lysis and substantial contamination of the plasma metabolome.

The associated temperature for storage and the time between whole blood collection and centrifugation are important preanalytical factors. Whole blood stored at room temperature is much more metabolically active than that stored on ice at approximately 4 °C, which will greatly affect the quantitative metabolic profile. We recommend a short processing time (<30 min) if storage is at room temperature, but storage at 4 °C on ice or in a refrigerator for longer periods is accepted by some large biobanks. Again, the variability introduced by different storage times and temperatures is low compared with the biological variability observed when studying the human population (8, 21, 52–56). Two separate studies have recommended processing within 3 h at 4 °C whenever feasible (8, 53). Jain et al. (55) have demonstrated metabolic changes measured up to 20 h before centrifugation, with metabolites related to erythrocyte metabolism showing the greatest change, and with lactate and arginine/ornithine being potential markers of instability. Trezzi et al. (8) have established a novel blood sample quality control marker, the LacaScore, based on the ascorbic acid/lactate ratio in plasma.

Centrifugation time and temperature must be consistent according to a standard operating procedure (Table 1). Some metabolites are unstable even under acceptable processing conditions, including cysteine and cystine (54).

Long-Term Storage Temperature

Until recently, plasma and serum were considered metabolically inactive after separation from cells in whole

blood. Quantitative changes in some metabolites can occur even in samples stored at -80°C , often displaying nonlinear patterns of concentration change (57). Therefore, we recommend that samples always be stored frozen, preferably in liquid nitrogen or at -80°C when liquid nitrogen is not available and analyzed within the shortest time window possible after collection. We recommend storing samples from an individual in multiple 0.5- or 1.0-mL aliquots. This minimizes any need for multiple, potentially damaging, freeze–thaw cycles should an individual's sample require multiple analyses (56). The number of temperature change cycles, e.g., because of the freezer door being open, is also likely to be important for all tissue types, although thus far little investigation has been done on this phenomenon (58).

Sample Stability

Although inappropriate thawing of samples and multiple freeze–thaw cycles are likely not appropriate, limited research has been reported to assess this process. Pizzaro et al. have reported that the thawing temperature was important and recommended thawing small aliquots (0.25 mL) on ice for lipids and that ultrasound thawing improved sensitivity and detection for lipid studies (59). Breier et al. showed that 2 freeze–thaw cycles did not influence the metabolic profiles in a targeted assay (21), but when possible, individual laboratories should conduct their own freeze–thaw investigations on metabolites of interest. Where freeze–thawing cannot be avoided, the number of freeze–thaw cycles should be recorded and standardized among samples in the same study to avoid bias and enable it to be included as a confounding factor when analyzing the data.

RECOMMENDATIONS

Blood products are probably the best studied and validated biofluids for metabolomics. Therefore, we recommend that the selection of an appropriate protocol is based on access to validation data demonstrating the robustness of the protocol.

Preanalytical Processing and Biobanking of Tissues

A detailed metabolic phenotypic analysis of tissues reflects their physiological and pathological status (60). However, obtaining systematic and reproducible results in tissue samples is challenging because of the complex nature of the samples and diversity of the metabolites. Thus, establishing work flow pipelines and standardized protocols for tissue metabolomics is of utmost importance, especially focusing on the preanalytical steps, which can introduce huge variability in the subsequent analyses (61–64). The evidence base for different tissue types is variable. A

summary of protocols for tissues with medium to well-defined evidence-based protocols is outlined in Table 1, whereas tissues for which substantially more validation research is needed are featured in Table 2.

Collection of Tissues

Want et al. (65) recommended that the timing of the tissue sample collection for controls and cases be randomized. When compared with collection of biofluids or blood, which can be collected easily and noninvasively, additional care should be taken for tissue samples. Tissues are normally collected with anesthesia or at autopsy, which may pose several problems. To obtain reliable metabolite profiles, sampling should occur as quickly as possible, which can create challenges in an operating theater (43). To measure extremely labile metabolites as accurately as possible, subsequent immediate flash-freezing on collection is required to avoid further metabolism in the samples (66). However, in an operating theater, there may be safety issues with having liquid nitrogen present. By contrast, placing a warm tissue directly into a -80°C freezer may enable the metabolic profile to change in the time it takes for the sample to freeze and, thus, is not optimum. To avoid contamination, as much blood as possible should be removed from the tissue samples (67). Because most tissues are heterogeneous, for repeatable results the location of the tissue sampling should be consistent throughout the same experiment to avoid region-specific metabolite variance if there is a limitation in obtaining the whole tissue for metabolomics analyses (65). Usually needle (e.g., organs) (68, 69) or punch (e.g., skin) (70) biopsies are carried out to collect the human tissues for metabolomics analyses, and care should be taken to avoid unnecessary biopsy-associated complications in the patients (71).

Important spatial information can be obtained from tissue sample metabolite analyses. Latest state-of-the-art technologies like mass spectrometry-based imaging analysis using, for example, MALDI-TOF MS, facilitates “spatial metabolomics” (72, 73). For tumor sample analysis, additional care should be taken about the location of sample collection (e.g., oxygenated vs necrotic areas) (65) and collection of “normal” tissue as a control (74, 75). Hence, careful and detailed experimental design is required considering what is the best representative tissue sample in terms of location, sample amount, and the required number of biological replicates for better statistical power in data analyses.

Storage of Tissues

As for blood, tissue samples should be stored at -80°C or lower for long-term storage for future metabolomics analyses. Sectioning large tissue samples into smaller

pieces may facilitate quick freezing and avoid future freeze–thaw cycles, although consideration should be given to the likely metabolite changes that may occur dependent on the sectioning technique and resulting time delay. However, considering that tissues are heterogeneous samples (e.g., metabolomic alterations during acute kidney injury are different in kidney cortex and kidney medulla), another possibility is using a tissue homogenizer or a clean uncontaminated mortar and pestle with liquid nitrogen and subaliquoting by weight to obtain homogeneous and representative samples (76–78). Unlike other sample types, there may be other requirements for their use, such as histology, which may influence which protocols can be used for processing for storage. There are usually only limited amounts of tissue samples available, especially in the case of human biopsies. Thus, care should be taken while collecting for subsequent aliquoting and storing at appropriate conditions, with consideration given to avoid contamination when slicing or homogenizing.

RECOMMENDATIONS

We recommend that tissue-specific sampling protocols be used. In general, tissue samples should be collected as quickly as possible, flash frozen in liquid nitrogen, and stored at -80°C or lower for long-term storage. Freeze–thaw cycles should be minimized as much as possible, and subaliquoting the tissue samples while collecting will reduce the future freeze–thaw cycles. For repeatable results, the location of the tissue sampling should be consistent throughout the same experiment to avoid region-specific variance.

Preanalytical Processing and Biobanking of Urine

In recent years, metabolomic studies using urine have clearly demonstrated its usefulness in a range of disciplines. Furthermore, urine is easy to collect and is abundant with metabolites that reflect food intake, environmental exposures, and alterations in biochemical pathways. However, to ensure that the results obtained are meaningful, it is imperative that attention is given to sample collection conditions, storage conditions, and postcollection treatment. A summary of protocols can be found in Table 1.

Collection of Urine

Urine samples can be collected as either a single mid-stream collection at a specific time (spot urine samples) or the total urine output in a period of 24 h (24-h samples). In both cases, it is important to prevent bacterial growth and ensure stability of the metabolites. It is now accepted that collected human urine is not sterile because of contamination by bacteria in the urethra (79). Indeed, bac-

terial growth in collected urine can be rapid and can modify metabolite composition. A recent study designed to examine the impact of sample collection conditions on the metabolite composition demonstrated that addition of preservative prevented bacterial growth but did not avoid metabolite degradation (80), whereas storage at 4°C inhibited bacterial growth and metabolite degradation. This has important consequences for collection of 24-h urine samples; to preserve the integrity of the sample, the results from this study support maintaining samples at 4°C during the collection period.

Depending on the research question, either spot urine or 24-h urine samples can be collected. A research question may be more suited to the use of one over the other. Participants' state of fasting is important for spot urine collection. Food intake has a substantial impact on the urinary metabolic profile (13), which should be considered in the design of collection protocols.

An advantage of using urine is the possibility of home sampling, which facilitates interventional study designs. However, special care must be taken regarding the use of inadequate urine collection containers and improper conditions of storage and transportation to repositories (81).

Processing Location, Temperature, and Time Intervals

A recent study by Rotter et al. (82) used a targeted approach to measure the stability of 63 metabolites under different storage conditions in the short term—a period that reflects the sample collection period. More specifically, the study investigated storage at -80°C , -20°C , 4°C , 9°C (cool pack), and room temperature for 0, 2, 8, and 24 h. Interestingly, about 90% of the targeted metabolites were not significantly altered by any of the conditions when compared with the samples immediately frozen at -80°C . However, storage in a cool pack and at room temperature resulted in changes in certain metabolites. Therefore, their recommendation was not to transport or store samples for >8 h in a cool pack or at room temperature. By contrast, the Da Vinci biobank recommends storing urine for nuclear magnetic resonance (NMR) for no more than 2 h at 4°C and centrifuging before freezing to avoid cell lysis (83).

Processing of collected urine is equally important. Bernini et al. (84) examined this step and concluded that a mild centrifugation and filtration step is necessary to ensure removal of cellular components. Care is required with filtration because there is the potential for loss of metabolites. As a result, many studies process urine samples using centrifugation only. Typical centrifugation conditions include centrifugation at 2000g for 10 min (see Table 1).

Storage of Urine

Once collected, a decision on the long-term storage conditions for the samples is necessary. Leparre et al. recently examined the long-term storage of urine samples using both targeted LC-MS metabolomics and a global profiling approach and found that storage at $-20\text{ }^{\circ}\text{C}$ for short periods (up to 20 days) was sufficient but that storage at $-80\text{ }^{\circ}\text{C}$ was recommended for longer periods to ensure the stability of sensitive metabolites (85). This is also supported by previous literature predominantly performed using NMR as the analytical technique. Earlier studies using NMR demonstrated that at storage conditions below $-20\text{ }^{\circ}\text{C}$ for 26 weeks there was limited impact on metabolite profile (86). Shorter-term studies also demonstrate stability of metabolites when stored at $-80\text{ }^{\circ}\text{C}$ and changes in metabolite profiles when storage was performed at room temperature (80, 84, 87).

Sample Stability

Several studies have examined the effects of freeze–thaw cycles on metabolite concentrations in urine samples. Earlier studies investigating the impact of freeze–thaw cycles focused on metabolite profiles and assessed the statistical impact using principal component analysis. Gika et al. examined the metabolite profile and reported no major global changes after 9 freeze–thaw cycles (88). However, using targeted analysis, Saude and Sykes reported an intermediate amount of change in metabolite concentrations after 8 freeze–thaw cycles (89). More recently, Rotter et al. demonstrated that 2 freeze–thaw cycles had no impact on metabolite concentrations (82). However, after 3 cycles, significant effects were identified, leading to the recommendation to limit the number of freeze–thaw cycles.

RECOMMENDATIONS

The overall evidence supports the following recommendations: storage of urine samples chilled during collection ($4\text{ }^{\circ}\text{C}$ if possible), centrifugation as soon as possible, and long-term storage at $-80\text{ }^{\circ}\text{C}$. Addition of a preservative is not necessary if samples can be maintained at $4\text{ }^{\circ}\text{C}$. When frozen, the number of freeze–thaw cycles should be limited to 2.

Preanalytical Processing and Biobanking of Feces

Sample acquisition, sample processing, and sources of experimental variability in serum, plasma, and urine metabolomics studies have been characterized in greater depth (90–92) than in the field of fecal metabolomics. Substantial progress has been made in nucleic acid-based metagenomic analysis of fecal microbial composition and

diversity. The literature on sample acquisition, processing, and management for fecal metabolic phenotyping is less well developed (Table 3). Although LC-MS and GC-MS are the most widely used analytical platforms in metabolomics, the use of ^1H NMR spectroscopy has been the most common tool used in fecal metabolic phenotyping (93, 94). The present discussion addresses critical elements to be considered in sample acquisition, a minimal set of recommended elements of sample acquisition, and a recognition that much work is needed to establish best practices for this specimen type.

Feces are considered a noninvasive proxy for the study of the intestinal microbiome and metabolome. As a specimen, feces present several analytical challenges because solid waste is a heterogeneous complex of dietary precursor molecules, undigested material, microbes, microbial fragments, microbial metabolites, and host cellular and molecular elements. In this context, the gut metabolome is a representation of host metabolism, microbial metabolism, host–microbial cometabolism, and environment (95). For these reasons, removal of solid particles, dead bacteria, and undigested matter from fecal specimens is frequently considered (96). This contrasts with urine and plasma, which generally require no extraction and to which the addition of buffer solutions is sufficient.

Collection of Feces

To adequately reflect the associated molecular diversity, the manner of feces collection is of considerable importance. There are 2 basic specimen considerations. The most simple and scalable method (for large studies) is to obtain a fecal specimen by paper tissue or swab (spot sampling). The alternative method is the use of whole bulk feces, which can be aliquoted for specific analytical uses. Although the fecal metabolome literature using the swab technique is limited, the stool microbial metagenome literature is instructive. Several technologies exist to extract spot samples for microbial metagenome analysis. However, to date, the fecal metabolome literature predominantly reports on bulk stool as the primary specimen. A recent NMR-based fecal metabolome study examined stool homogeneity, obtaining specimens from 4 locations (e.g., top, edge, middle, and bottom) of the bulk stool specimens. Principal component analysis revealed that the crude fecal samples collected from different positions were widely distributed in the metabolic space, and orthogonal partial least-squares discriminant analysis further showed that the sample composition between topographical positions and whole sample homogeneity was significantly different (97). This contrasts with microbial species composition, which has been observed to be more homogeneous across bulk stool (97). From the evidence to date, a balance must be struck between

ease of sample collection and the heterogeneity of bulk feces. When considering either spot or bulk sampling method, issues of the topographical homogeneity/heterogeneity of the fecal specimen should be considered.

Timing related to collection of stool is generally random unless modifiers of stool frequency and consistency (e.g., laxatives) are used. When such modifiers are used, the method used and its influence on the metabolome should be carefully noted and considered. Timing of food intake should also be considered. Stool microbiome studies have generally been conducted, using overnight fasts, unless specific dietary questions are being addressed in the study. A recent study showed that a given dietary substrate load (e.g., banana vs cookie) may evoke substantially different responses between individuals (e.g., serum glucose) and that these differences may, in part, be driven by the gut microbial community structure (98). Thus, dietary intake should be carefully controlled or monitored, depending on the research question. Samples collected with no additives are suitable for untargeted metabolomics analysis when frozen shortly after collection, i.e., storage at -80°C within approximately 30 min after collection (99). This is considered the gold standard in fecal metabolome analysis. Recently, Loftfield et al. collected fecal samples from 18 volunteers, using 4 methods: no solution, 95% ethanol, fecal occult blood test (FOBT) cards, and fecal immunochemical test (FIT). One set of samples was frozen after collection (day 0) and for 95% ethanol, FOBT, and FIT. A second set was frozen after 96 h at room temperature. Using untargeted metabolomics, stability was examined after 96 h at room temperature for 95% ethanol, FOBT, and FIT, along with concordance of metabolite measures with frozen day 0 samples without solution (99). Metabolite concordance with the gold standard was higher for 95% ethanol (median $r_s = 0.82$), followed by FOBT (median $r_s = 0.70$) and FIT (median $r_s = 0.40$).

There is a general question regarding which type of preprocessed sample is optimum for fecal metabolome analysis. Presently, there are 3 primary sample types being explored, which include crude fecal samples (100), fecal water extracts (97, 100–103), and lyophilized feces (103, 104). Each may yield a slightly different metabolite profile. For instance, Phua et al. compared lyophilized human feces vs fecal water using a GC-TOF MS method. Lyophilized feces demonstrated a larger number of chromatographic peaks (704 vs 664), reflecting more comprehensive metabolic coverage. Nonpolar metabolites, such as phenolics, sterols, esters, long chain alcohols, and long chain carboxylic acids, were higher in lyophilized feces compared with fecal water. Amino acids and carbohydrates were lower in lyophilized feces compared with fecal water (105). Freeze-drying can provide for greater precision in mixing of dry stool material with solvents and derivatization agents (enhancing reproduc-

ibility). However, concerns have been raised that certain molecular classes, such as short chain fatty acids (acetate, propionate, and butyrate) can be adversely affected by lyophilization. Such concerns may need to be addressed by aliquoting samples, identifying specific molecular targets, and applying specific preservation techniques (e.g., HCl) for specific target molecules (e.g., butyrate) to those aliquots. For instance, attention to the volatile molecular class has been addressed by transfer of aliquots from bulk specimens to head space vials (106). Additional work will be required to determine optimum processing techniques for targeted and untargeted analyses.

One means to address sample stability is centrifugation, in some cases, followed by filtration. The centrifugation (and filtration) step is intended to remove cellular components, which has the effect of substantially reducing active biochemical processes in the sample and their attendant contribution to ongoing molecular flux within the sample. This is a crucial step in deriving fecal water from bulk feces. Although centrifugation and filtration (Table 3) may prevent continuation of metabolic processes because of cellular activity, it may also result in reduction of molecular feature diversity.

Storage of Feces

There is a paucity of data on the long-term storage of fecal samples for metabolomics purposes. However, examination of fecal microbiome samples used to study microbial DNA integrity and fecal protein is informative. Kia et al. freeze-dried human fecal samples, stored them for 14 years at -20°C , and compared the DNA integrity with freshly collected human fecal specimens (107). The DNA from the retained extracts was more sheared than that of fresh samples, but it was still of sufficient molecular weight to support amplicon-based studies. Morris et al. (108) examined protein content and protease activity on fecal samples stored for up to 1 year at -20°C and -80°C , and in a variety of storage buffers, and showed that extracted protein was not stable and activity was lost, even with a suitable storage buffer. The most robust solution was to store the proteins in an intact frozen native fecal matrix and extract at the time of assay or analysis. This approach was shown to be appropriate for samples that had been frozen for 1 year and that possessed low levels of protease activity (108). In contrast to the above, Gratton et al. observed notable stability differences between whole feces and fecal water, with fecal water displaying the greatest stability (97).

Freeze-thaw cycles are generally problematic in metabolomics studies (42), and examination of the fecal metabolome is no different. According to Cardona et al. (109), if frozen fecal samples are going to be transported, it should be done as quickly as possible, preferably on ice, to avoid a thawing event. As noted previously, the gold

standard is to freeze samples at -80°C within 30 min. However, Gratton et al. have argued that if a freeze–thaw cycle might be introduced during the transport, refrigeration for the first 24-h postcollection may be preferred, followed by freezing on arrival at the sample destination (97). Distribution of raw samples into aliquots before freezing or processing is a reliable means to avoid future freeze–thaw cycles, but an initial freeze–thaw cycle during transport should be avoided.

Given that gastrointestinal bleeding is commonly encountered in the clinic, there is a growing interest in the extent to which fecal occult blood may affect the analysis and interpretation of the fecal metabolome. Recently, principal component analysis revealed that occult blood (1 mg Hb/g feces) exerted only a minor effect on the fecal metabolome. However, feces spiked with gross blood (100 mg Hb/g feces) yielded a unique metabolotype, suggesting that attention should be given to gastrointestinal bleeding in fecal metabolomics studies (105).

RECOMMENDATIONS

The above evidence supports attention to the following, with a clear need for further development in this field: bulk stool collection, when possible. Recognize that spot sampling may introduce significant metabolite variance. Freeze any sample collected on site within 30 min of sample collection. If transported, do not allow for a freeze–thaw cycle. Some groups advocate that if a thaw cycle is anticipated in transport, samples should be refrigerated rather than frozen on collection. When nucleic acid-based metagenomic analysis and metabolite profiling are a component of the same study, homogenization is also highly recommended. Spot sampling from multiple locations on the bulk stool is recommended, followed by homogenization. Dispense homogenized samples into multiple aliquots to avoid freeze–thaw cycling in future analyses. Avoid >1 freeze–thaw cycle. Short-term storage should be optimally at -80°C and minimally at -40°C . Long-term storage should be only at -80°C . In the analysis, presence of occult blood should be examined. Large-scale studies may want to begin with pilot studies to optimize the method to the research question, while considering the basic principles described herein. Critical among these considerations is whether to use crude fecal samples, fecal water extracts, or lyophilized feces, coupled with consideration for their respective feature yields. If spot testing cards are used, they should be from a homogenate specimen of >1 spot-collection site on the bulk feces specimen. If using lyophilized specimens, collect bulk sample, homogenize, transfer homogenate of sufficient mass (e.g., 100 mg), lyophilize, and transfer to a polypropylene tube for immediate freezing and storage at -80°C . For fecal water extraction, $>15\text{-g}$ sample should be from a homogenate of >1 spot-collection site of bulk feces. Fecal methods are commonly optimized for

untargeted metabolomics, but if targeted metabolomics is a component of the study, individual aliquots of homogenate should be prepared in a manner that optimizes recovery of the specific analytes of interest.

Preanalytical Processing and Biobanking of Saliva

Saliva is probably the most commonly collected “other” fluid because it can be collected noninvasively and repeatedly. It has been used in studies ranging from dementia (110, 111) to cancer (62, 112) and oral disease (113, 114). Currently, there are saliva collection protocols in existence, but most biobank protocols are not designed around metabolomics research and alternative metabolomics-specific protocols have not been well validated (Table 2). Given the propensity for both food debris and oral bacteria in saliva samples to both degrade and contaminate the in vivo metabolomics profile (110), protocols should consider this risk at the time of collection and take steps to mitigate it early after the collection period.

There are multiple published protocols for the collection of saliva samples but little published validation of the methods used. Saliva is typically collected either by stimulation with a noxious substance, free spitting, or chewing on a synthetic tampon followed by an extraction procedure (typically centrifugation) to reclaim the fluid. Stimulated collection methods are reported to change the ratio of metabolites to each other (12), and chewing may alter hormone concentrations (115), suggesting unstimulated passive collection as the best approach. Showing pictures to increase saliva production may be beneficial (115).

Before collection, there are various intervals of fasting, tooth brushing, and smoking allowed or documented. Most are in the duration of 1 to 2 h but range from no abstinence recorded (11) to 3 h (116). It is unclear how much effect the length and type of any such restrictions has on the eventual metabolome. Circadian rhythms, smoking, periodontal disease, and fasting states have all been reported as affecting the salivary metabolome (12, 62, 113).

Both no rinsing and rinsing with water before collection are strategies that are frequently used (111, 116–119). Rinsing with water may dislodge and remove the worst food debris in the mouth, but it may also act to stimulate the salivary glands, thus both changing and diluting the sample. Overall, rinsing with water is probably a sensible strategy, although it should be both consistent and recorded in both the standard operating procedures and any subsequent publications.

Handling of the sample both during and after collection will influence the eventual analysis results. The time at 4°C before freezing ranges from <30 min (120) to <1 days (110). Schipper et al. (121) and Sugimoto et

al. (120) have both cited concerns that the salivary metabolome is unstable kept at these temperatures for long periods. It is probably preferable to freeze the saliva after collection in a defined and recorded time window and preferably as soon as possible after collection. Centrifugation before freezing is common (111, 117, 120) and is probably recommended because it removes food debris and cellular material before storage (43). However, a systematic evaluation of the optimal time, temperature, and duration for centrifuging is required.

Longer term storage should be at -80°C or below. Storage at -20°C has been shown to be suitable for short-term storage for NMR in some limited studies (12), but because degradation of metabolites in other biofluids has been demonstrated to occur at these temperatures (22), -80°C is preferable if available.

For saliva, not enough evidence exists to recommend one specific protocol over another. Validation of temperature of collection and storage protocols, and especially the effects of storage at 4°C , should be investigated for metabolomics research. Detailed collection protocols should be drawn up and standardized for any individual biobank and recorded in the methods when publishing new research.

Preanalytical Processing and Biobanking of Cerebrospinal Fluid

The collection and biobanking of cerebrospinal fluid (CSF) has been well reviewed by Teunissen et al. (122), and we support most, but not all, recommendations made in this article. Suggested modifications to their recommendations include centrifugation (2000g for 10 min at 4°C) before storage to remove and prevent any cells in the CSF lysing on thawing. This step is important even when no obvious erythrocyte contamination is evident (123, 124). Blood and other cells affect the protein content of the CSF, which can affect the metabolite analysis (125, 126). Likewise, following collection, keeping the sample at room temperature for the 2-h period may be too long to prevent the degradation of certain metabolites (e.g., certain amino acids). At a minimum, the time from collection to processing should be both recorded and consistent between samples. Otto et al. (124) recommended a maximum of 1 h at room temperature, which appears to be a reasonable compromise. Precentrifuging the samples and removing cellular material may lengthen this time window (123).

Wuolikainen et al. (22) looked at storage conditions for CSF. Sublimation of CO_2 will variably affect the pH of samples and, thus, the subsequent analysis. Therefore, we recommend storage at -80°C or colder in the smallest possible container with a close-fitting screw cap. Regarding collection and storage materials, polypropylene tubes were first proposed for CSF collection because

some proteins stick to plastic (127). Polypropylene appears to have now become standard and has been used in a wide variety of metabolomics CSF studies (122, 128, 129). Wuolikainen et al. (22) demonstrated both how the material properties of the tubes and the order of tube collection affected the analytical results, but little systematic evaluation of tube material has been attempted for metabolomics. In proteomics, more extensive evaluation has been undertaken, which is broadly reviewed by Willemse and Tuenissen (130), including the propensity for tubes to release their own contaminants into the sample. Overall, when possible, sample tubes should be bought in bulk and the same batch used for an individual study.

Because the first 1 or 2 mL of CSF is the most likely to be contaminated with blood, we support the recommendation that it should be used for medical testing or otherwise discarded, rather than kept for biobanking (124). Any obvious blood-contaminated samples should likewise be discarded.

Because the variation between the ratio of blood concentrations of certain metabolites and the CSF concentrations may be indicative of certain disease states (131–133), consideration as to whether a blood plasma sample should be collected and analyzed alongside the CSF sample should also be determined.

Overall, the existing protocol for CSF collection, when followed, should be sufficient for metabolomics if centrifugation of samples and time to freezing are both considered and optimized. The size and material of storage containers and the temperature of storage are factors that will directly affect analysis results, and there is some evidence that natural diurnal variation may occur in some CSF metabolites, supporting that time of day of collection should be standardized (134).

Preanalytical Processing and Biobanking for Other Biofluids

Other biofluids that have been used for metabolomics include sweat (135), human breast milk (136), lacrimal fluid (137), endometrial, peritoneal, follicular, and synovial fluids (138–141), breath and other volatiles (142), and microdialysates (143, 144). Collection procedures (Table 2) for many of these fluids have not been systematically evaluated, especially in humans. Therefore, we recommend that, until further validation has been conducted, protocols should be adapted from existing protocols for similar metabolomics research.

Some fluid-specific issues are worth highlighting. For breast milk, freezing is a useful way of agglutinating micelles, and thus removing insoluble components from the analysis (145, 146). For peritoneal fluid, endometrial fluid, and menstrual effluent, the World Endometriosis Research Foundation published guidelines based on best-

practice biobanking for these biofluids (115). With current knowledge, the protocols outlined in this review for peritoneal and endometrial fluid are broadly sufficient for most metabolomics research.

For exhaled breath condensate, the American Thoracic Society and the European Respiratory Society published a list of guidelines in 2005 (147) on the collection of this type of specimen. This was recently updated as a technical standard for exhaled biomarkers in lung disease (148). We recommend that the metabolomics community follow the suggestions and good practices outlined in this document when collecting samples for any metabolome analysis involving the collection of exhaled breath condensate. Unfortunately, these guidelines do not cover other methods of collecting and storing volatiles.

Ethics of Sample Collection

The issue of biobanking and the wider issue of “big data” introduce some new ethical obstacles, including:

1. New models of consent based around a “known unknown” for both the scientist and the donor about the full implications and uses that the samples may be used for (149).
2. The ability of the data to stay truly anonymous, especially once coupled with other omic or metadata and with an increasing emphasis on sharing data sets (150).
3. Rights and restrictions of the individuals to access their own data, especially when it may affect both their own and their family’s health (151).
4. Rights and restrictions of others (e.g., insurance providers, employers, or healthcare companies) to potentially use that data for commercial or alternative purposes (152). The establishment of commercial biobanks is an interesting development that raises new questions in this area.
5. The legality, ability, and ethics of biobanks and researchers sharing biosamples across international borders (153).

Harmonizing collection procedures, ethical consent processes, and documents between biobanks is possible and has been demonstrated to be effective and may enable more effective use of resources (153).

Conclusions

Sample collection procedures must be carefully considered when biobanking for metabolomics studies. Substandard treatment of samples during the preanalytical phase can add substantial variation or bias that may result

in misleading analytical results. Procedures that are based on well-validated and evidence-based methodologies should be followed whenever possible, although practicalities sometimes play a role in the final procedure adopted, and the burden on both the volunteer donating the samples and the staff collecting them needs to be considered. Comprehensive staff training is a worthwhile endeavor, so that every member of the collection and storage team appreciates the importance of rigidly adhering to the protocol, especially because consistency in implementing that protocol is an important tool in contributing to reproducibility of results. Once a robust protocol has been developed and defined, it can then be used for future collections. Hence, it is worthwhile taking the time and effort to implement a well-validated protocol from the start. Targeted methods may require protocols specific toward the metabolites of interest. Any reported metabolomics study should define in detail the sample collection conditions as part of the method in accordance with good scientific practice. Peer reviewers and journal editors can support this practice by requesting this information when reviewing submissions.

Author Contributions: All authors confirmed they have contributed to the intellectual content of this paper and have met the following 3 requirements: (a) significant contributions to the conception and design, acquisition of data, or analysis and interpretation of data; (b) drafting or revising the article for intellectual content; and (c) final approval of the published article.

Authors’ Disclosures or Potential Conflicts of Interest: Upon manuscript submission, all authors completed the author disclosure form. Disclosures and/or potential conflicts of interest:

Employment or Leadership: M.A. Schmidt, Sovaris Aerospace, LLC.

Consultant or Advisory Role: M.A. Schmidt, WellnessFX.

Stock Ownership: M.A. Schmidt, Sovaris Aerospace, LLC.

Honoraria: None declared.

Research Funding: None declared.

Expert Testimony: None declared.

Patents: None declared.

Acknowledgments: The authors thank Caleb M. Schmidt and Robert Hubbard (Sovaris Aerospace) and Kenneth Nazir (FIMM Metabolomics Unit) for their editorial support. The authors also thank all the current members of the Precision Medicine and Pharmacometabolomics Task Group of the Metabolomics Society for their contributions. Current members include Rima Kaddurah-Daouk (Chair), Cristina Andres-Lacueva, Richard D. Beger, Lorraine Brennan, David Broadhurst, Marta Cascante, Warwick Dunn, Oliver Fiehn, Steven S. Gross, Thomas Hankemeier, Jennifer A. Kirwan, Gabi Kastenmüller, Andrew Lane, Matej Oresic, Michael A Schmidt, Karsten Suhre, Susan Sumner, Ines Thiele, Vidya Velagapudi, David S. Wishart, Roland Wohlgenuth, and Krista Zanetti. The authors thank Richard Beger, Cristina Andres-Lacueva, Andrew Lane, and Karsten Suhre for their helpful comments on the manuscript.

References

- Vaught J, Bledsoe M, Watson P. Biobanking on multiple continents: will international coordination follow? New Rochelle (NY): Mary Ann Liebert, Inc; 2014.
- IARC Biobank. <http://ibb.iarc.fr/links/index.php>. (Accessed August 2017).
- BBMRI-ERIC. Standardisation. <http://www.bbMRI-eric.eu/services/standardisation/>. (Accessed August 2017).
- Norwegian Institute of Public Health. <https://www.fhi.no/en/projects/fp6-phoebe-promoting-harmonisation/>. (Accessed August 2017).
- Lahiri DK, Schnabel B. DNA isolation by a rapid method from human blood samples: effects of MgCl₂, EDTA, storage time, and temperature on DNA yield and quality. *Biochem Genet* 1993;31:321–8.
- Davis B. Effects of long-term storage on the concentrations of the unconjugated acidic metabolites of the trace amines, indoleamines and catecholamines. *J Chromatogr B Biomed Sci Appl* 1988;433:23–30.
- De Mol N, Henegouwen G, Gerritsma K. Photochemical decomposition of catecholamines. II. The extent of aminochrome formation from adrenaline, isoprenaline and noradrenaline induced by ultraviolet light. *Photochem Photobiol* 1979;29:479–82.
- Trezzi J-P, Bulla A, Bellora C, Rose M, Lescuyer P, Kiehn-topf M, et al. LacaScore: a novel plasma sample quality control tool based on ascorbic acid and lactic acid levels. *Metabolomics* 2016;12:96.
- Rosenling T, Stoop MP, Smolinska A, Muilwijk B, Coulier L, Shi S, et al. The impact of delayed storage on the measured proteome and metabolome of human cerebrospinal fluid. *Clin Chem* 2011;57:1703–11.
- Wallace M, Hashim Y-Y, Wingfield M, Culliton M, McAuliffe F, Gibney M, Brennan L. Effects of menstrual cycle phase on metabolomic profiles in menopausal women. *Hum Reprod* 2010;25:949–56.
- Dallmann R, Viola AU, Tarokh L, Cajochen C, Brown SA. The human circadian metabolome. *Proc Natl Acad Sci U S A* 2012;109:2625–9.
- Takeda I, Stretch C, Barnaby P, Bhatnager K, Rankin K, Fu H, et al. Understanding the human salivary metabolome. *NMR Biomed* 2009;22:577–84.
- Walsh MC, Brennan L, Malthouse JPG, Roche HM, Gibney MJ. Effect of acute dietary standardization on the urinary, plasma, and salivary metabolomic profiles of healthy humans. *Am J Clin Nutr* 2006;84:531–9.
- Palacios C, Wigertz K, Martin B, Weaver C. Sweat mineral loss from whole body, patch and arm bag in white and black girls. *Nutr Res* 2003;23:401–11.
- Khakimov B, Poulsen SK, Savorani F, Acar E, Gürdeniz G, Larsen TM, et al. New Nordic diet versus average Danish diet: a randomized controlled trial revealed healthy long-term effects of the new Nordic diet by GC-MS blood plasma metabolomics. *J Proteome Res* 2016;15:1939–54.
- Chow J, Panasevich MR, Alexander D, Vester Boler BM, Rossoni Serao MC, Faber TA, et al. Fecal metabolomics of healthy breast-fed versus formula-fed infants before and during in vitro batch culture fermentation. *J Proteome Res* 2014;13:2534–42.
- Suárez M, Caimari A, del Bas JM, Arola L. Metabolomics: an emerging tool to evaluate the impact of nutritional and physiological challenges. *TrAC Trends Anal Chem* 2017;96:79–88.
- Wang S-Y, Yu C-P, Pan Y-L, Zhou X-R, Xin R, Wang Y, et al. Metabolomics analysis of serum from subjects after occupational exposure to acrylamide using UPLC-MS. *Mol Cell Endocrinol* 2017;444:67–75.
- Walker DI, Uppal K, Zhang L, Vermeulen R, Smith M, Hu W, et al. High-resolution metabolomics of occupational exposure to trichloroethylene. *Int J Epidemiol* 2016;45:1517–27.
- Fages A, Ferrari P, Monni S, Dossus L, Floegel A, Mode N, et al. Investigating sources of variability in metabolomic data in the EPIC study: the Principal Component Partial R-square (PC-PR2) method. *Metabolomics* 2014;10:1074–83.
- Breier M, Wahl S, Prehn C, Fugmann M, Ferrari U, Weise M, et al. Targeted metabolomics identifies reliable and stable metabolites in human serum and plasma samples. *PLoS One* 2014;9:e89728.
- Wuolikainen A, Hedenström M, Moritz T, Marklund SL, Antti H, Andersen PM. Optimization of procedures for collecting and storing of CSF for studying the metabolome in ALS. *Amyotroph Lateral Scler* 2009;10:229–36.
- Cajka T, Fiehn O. Toward merging untargeted and targeted methods in mass spectrometry-based metabolomics and lipidomics. *Anal Chem* 2015;88:524–45.
- Broadhurst DI, Kell DB. Statistical strategies for avoiding false discoveries in metabolomics and related experiments. *Metabolomics* 2006;2:171–96.
- Holmes TH. Ten categories of statistical errors: a guide for research in endocrinology and metabolism. *Am J Physiol Endocrinol Metab* 2004;286:E495–E501.
- UK Biobank. <http://www.ukbiobank.ac.uk/about/biobank-uk/>. (Accessed June 2017).
- GE Life Sciences. http://www.gelivesciences.com/webapp/wcs/stores/servlet/catalog/en/GELifeSciences-uk/products/AlternativeProductStructure_21577/. (Accessed June 2017).
- Grüner N, Stambouli O, Ross RS. Dried blood spots—preparing and processing for use in immunoassays and in molecular techniques. *J Vis Exp* 2015;97:52619.
- Molecular standards for malaria: overview of standards. <http://www.warn.org/sites/default/files/attachments/procedures/collection-of-blood-on-filter-paper.pdf>. (Accessed June 2017).
- SWBH Pathology. <http://www.cityassays.org.uk/Vitamin%20D%20Blood%20Spot.html>. (Accessed June 2017).
- Millington D, Kodo N, Norwood D, Roe C. Tandem mass spectrometry: a new method for acylcarnitine profiling with potential for neonatal screening for inborn errors of metabolism. *J Inherit Metab Dis* 1990;13:321–4.
- Wilcken B, Wiley V, Hammond J, Carpenter K. Screening newborns for inborn errors of metabolism by tandem mass spectrometry. *N Engl J Med* 2003;348:2304–12.
- Koop DR, Bleye LA, Munar M, Cherala G, Al-Uzri A. Analysis of tacrolimus and creatinine from a single dried blood spot using liquid chromatography tandem mass spectrometry. *J Chromatogr B* 2013;926:54–61.
- De Kesel PM, Sadones N, Capiou S, Lambert WE, Stove CP. Hemato-critical issues in quantitative analysis of dried blood spots: challenges and solutions. *Bioanalysis* 2013;5:2023–41.
- Michopoulos F, Theodoridis G, Smith CJ, Wilson ID. Metabolite profiles from dried blood spots for metabolomic studies using UPLC combined with orthogonal acceleration ToF-MS: effects of different papers and sample storage stability. *Bioanalysis* 2011;3:2757–67.
- Koulman A, Prentice P, Wong MC, Matthews L, Bond NJ, Eiden M, et al. The development and validation of a fast and robust dried blood spot based lipid profiling method to study infant metabolism. *Metabolomics* 2014;10:1018–25.
- Theil PK, Pedersen LJ, Jensen MB, Yde CC, Knudsen K. Blood sampling and hemolysis affect concentration of plasma metabolites. *J Anim Sci* 2012;90:412–4.
- Kamlage B, Maldonado SG, Bethan B, Peter E, Schmitz O, Liebenberg V, Schatz P. Quality markers addressing preanalytical variations of blood and plasma processing identified by broad and targeted metabolite profiling. *Clin Chem* 2014;60:399–412.
- Wedge DC, Allwood JW, Dunn W, Vaughan AA, Simpson K, Brown M, et al. Is serum or plasma more appropriate for intersubject comparisons in metabolomic studies? An assessment in patients with small-cell lung cancer. *Anal Chem* 2011;83:6689–97.
- Yu Z, Kastenmüller G, He Y, Belcredi P, Möller G, Prehn C, et al. Differences between human plasma and serum metabolite profiles. *PLoS One* 2011;6:e21230.
- Denery JR, Nunes AA, Dickerson TJ. Characterization of differences between blood sample matrices in untargeted metabolomics. *Anal Chem* 2010;83:1040–7.
- Yin P, Lehmann R, Xu G. Effects of pre-analytical processes on blood samples used in metabolomics studies. *Anal Bioanal Chem* 2015;407:4879–92.
- Chetwynd AJ, Dunn WB, Rodriguez-Blanco G. Collection and preparation of clinical samples for metabolomics. In: Sussulini A, editor. *Metabolomics: from fundamentals to clinical applications*. New York (NY): Springer; 2017. p. 19–44.
- Weger BD, Weger M, Görling B, Schink A, Gobet C, Keime C, et al. Extensive regulation of diurnal transcription and metabolism by glucocorticoids. *PLoS Genet* 2016;12:e1006512.
- Giskeødegård GF, Davies SK, Revell VL, Keun H, Skene DJ. Diurnal rhythms in the human urine metabolome during sleep and total sleep deprivation. *Sci Rep* 2015;5:14843.
- Townsend MK, Bao Y, Poole EM, Bertrand KA, Kraft P, Wolpin BM, et al. Impact of pre-analytic blood sample collection factors on metabolomics. *Cancer Epidemiol Biomarkers Prev* 2016;25:823–9.
- Gonzalez-Covarrubias V, Dane A, Hankemeier T, Vreeken RJ. The influence of citrate, EDTA, and heparin anticoagulants to human plasma LC-MS lipidomic profiling. *Metabolomics* 2013;9:337–48.
- BD vacutainer tube guide. <https://iti.stanford.edu/content/dam/sm/iti/documents/himc/immunoassays/BDVacutainerTubeGuide.pdf>. (Accessed June 2017).
- López-Bascón M, Priego-Capote F, Peralbo-Molina A, Calderón-Santiago M, de Castro ML. Influence of the collection tube on metabolomic changes in serum and plasma. *Talanta* 2016;150:681–9.
- Peakman T, Elliott P. Current standards for the storage of human samples in biobanks. *Genome Med* 2010;2:72.
- Genomics England. <https://www.genomicsengland.co.uk/the-100000-genomes-project/>. (Accessed June 2017).
- Dunn WB, Broadhurst D, Ellis DI, Brown M, Halsall A, O'hagan S, et al. A GC-TOF-MS study of the stability of serum and urine metabolomes during the UK Biobank sample collection and preparation protocols. *Int J Epidemiol* 2017;46:100–10.

- demiol 2008;37:i23-i30.
53. Malm L, Tybring G, Moritz T, Landin B, Galli J. Metabolomic quality assessment of EDTA plasma and serum samples. *Biopreserv Biobank* 2016;14:416-23.
54. Moriya T, Satomi Y, Kobayashi H. Intensive determination of storage condition effects on human plasma metabolomics. *Metabolomics* 2016;12:179.
55. Jain M, Kennedy AD, Elsea SH, Miller MJ. Analytes related to erythrocyte metabolism are reliable biomarkers for preanalytical error due to delayed plasma processing in metabolomics studies. *Clin Chim Acta* 2017;466:105-11.
56. Jobard E, Trédan O, Postoly D, André F, Martin A-L, Elena-Herrmann B, Boyault S. A systematic evaluation of blood serum and plasma pre-analytics for metabolomics cohort studies. *Int J Mol Sci* 2016;17:2035.
57. Haid M, Muschet C, Wahl S, Römisch-Margl W, Prehn C, Möller G, Adamski J. Long-term stability of human plasma metabolites during storage at -80°C . *J Proteome Res* 2017;17:203-11.
58. Abuja PM, Ehrhart F, Schoen U, Schmidt T, Stracke F, Dallmann G, et al. Alterations in human liver metabolome during prolonged cryostorage. *J Proteome Res* 2015;14:2758-68.
59. Pizarro C, Arenzana-Rámila I, Pérez-del-Notario N, Pérez-Matute P, González-Sáiz JM. Thawing as a critical pre-analytical step in the lipidomic profiling of plasma samples: new standardized protocol. *Anal Chim Acta* 2016;912:1-9.
60. Holmes E, Wilson ID, Nicholson JK. Metabolic phenotyping in health and disease. *Cell* 2008;134:714-7.
61. Vorkas PA, Isaac G, Anwar MA, Davies AH, Want EJ, Nicholson JK, Holmes E. Untargeted UPLC-MS profiling pipeline to expand tissue metabolome coverage: application to cardiovascular disease. *Anal Chem* 2015;87:4184-93.
62. Wang A, Wang CP, Tu M, Wong DT. Oral biofluid biomarker research: current status and emerging frontiers. *Diagnosics* 2016;6:45.
63. Anwar MA, Vorkas PA, Li JV, Shalhoub J, Want EJ, Davies AH, Holmes E. Optimization of metabolite extraction of human vein tissue for ultra performance liquid chromatography-mass spectrometry and nuclear magnetic resonance-based untargeted metabolic profiling. *Analyst* 2015;140:7586-97.
64. Vasilopoulou CG, Margariti M, Klapa MI. Metabolomic analysis in brain research: opportunities and challenges. *Front Physiol* 2016;7:183.
65. Want EJ, Masson P, Michopoulos F, Wilson ID, Theodoridis G, Plumb RS, et al. Global metabolic profiling of animal and human tissues via UPLC-MS. *Nat Protoc* 2013;8:17-32.
66. Schaub J, Schiesling C, Reuss M, Dauner M. Integrated sampling procedure for metabolome analysis. *Biotechnol Prog* 2006;22:1434-42.
67. Ly-Verdú S, Schaefer A, Kahle M, Groeger T, Neschen S, Arteaga-Salas JM, et al. The impact of blood on liver metabolite profiling—a combined metabolomic and proteomic approach. *Biomed Chromatogr* 2014;28:231-40.
68. Solinas A, Chessa M, Culeddu N, Porcu MC, Virgilio G, Arcadu F, et al. High resolution-magic angle spinning (HR-MAS) NMR-based metabolomic fingerprinting of early and recurrent hepatocellular carcinoma. *Metabolomics* 2014;10:616-26.
69. Huan T, Troyer DA, Li L. Metabolite analysis and histology on the exact same tissue: comprehensive metabolite profiling and metabolic classification of prostate cancer. *Sci Rep* 2016;6:32272.
70. Randhawa M, Southall M, Samaras ST. Metabolomic analysis of sun exposed skin. *Mol Biosyst* 2013;9:2045-50.
71. Franzén B, Sennerstam R, Wiksell H, Auer G. Significance of diagnostic needle biopsy for the development of inflammation, tumour progression and metastasis. *J Mol Biomark Diagn S* 2016;2:2.
72. Trim PJ, Frances S, Clench MR. Imaging mass spectrometry for the assessment of drugs and metabolites in tissue. *Bioanalysis* 2009;1:309-19.
73. Nemes P, Barton AA, Vertes A. Three-dimensional imaging of metabolites in tissues under ambient conditions by laser ablation electrospray ionization mass spectrometry. *Anal Chem* 2009;81:6668-75.
74. Fan TW, Lane AN, Higashi RM, Farag MA, Gao H, Bousamra M, Miller DM. Altered regulation of metabolic pathways in human lung cancer discerned by 13 C stable isotope-resolved metabolomics (SIRM). *Mol Cancer* 2009;8:41.
75. Fan TW, Lane AN, Higashi RM. Stable isotope resolved metabolomics studies in ex vivo tissue slices. *Bio Protoc* 2016;6:e1730.
76. Wei Q, Xiao X, Fogle P, Dong Z. Changes in metabolic profiles during acute kidney injury and recovery following ischemia/reperfusion. *PLoS One* 2014;9:e106647.
77. Römisch-Margl W, Prehn C, Bogumil R, Röhring C, Suhre K, Adamski J. Procedure for tissue sample preparation and metabolite extraction for high-throughput targeted metabolomics. *Metabolomics* 2012;8:133-42.
78. Lin CY, Wu H, Tjeerdema RS, Viant MR. Evaluation of metabolite extraction strategies from tissue samples using NMR metabolomics. *Metabolomics* 2007;3:55-67.
79. Maskell R. The natural history of urinary tract infection in women. *Med Hypotheses* 2010;74:802-6.
80. Roux A, Thévenot EA, Seguin F, Olivier M-F, Junot C. Impact of collection conditions on the metabolite content of human urine samples as analyzed by liquid chromatography coupled to mass spectrometry and nuclear magnetic resonance spectroscopy. *Metabolomics* 2015;11:1095-105.
81. Morello J, Nevedomskaya E, Pacchiarotta T, Schoemaker B, Derks R, Voet NB, et al. Effect of suboptimal sampling and handling conditions on urinary metabolic profiles. *Chromatographia* 2015;78:429-34.
82. Rotter M, Brandmaier S, Prehn C, Adam J, Rabstein S, Gawrych K, et al. Stability of targeted metabolite profiles of urine samples under different storage conditions. *Metabolomics* 2017;13:4.
83. Carotenuto D, Luchinat C, Marcon G, Rosato A, Turano P. The Da Vinci European BioBank: a metabolomics-driven infrastructure. *J Pers Med* 2015;5:107-19.
84. Bernini P, Bertini I, Luchinat C, Nincheri P, Staderini S, Turano P. Standard operating procedures for pre-analytical handling of blood and urine for metabolomic studies and biobanks. *J Biomol NMR* 2011;49:231-43.
85. Laparre J, Kaabia Z, Mooney M, Buckley T, Sherry M, Le Bizet B, Dervilly-Pinel G. Impact of storage conditions on the urinary metabolomics fingerprint. *Anal Chim Acta* 2017;951:99-107.
86. Lauridsen M, Hansen SH, Jaroszewski JW, Cornett C. Human urine as test material in 1H NMR-based metabolomics: recommendations for sample preparation and storage. *Anal Chem* 2007;79:1181-6.
87. Budde K, Gök Ö-N, Pietzner M, Meisinger C, Leitzmann M, Nauck M, et al. Quality assurance in the pre-analytical phase of human urine samples by 1 H NMR spectroscopy. *Arch Biochem Biophys* 2016;589:10-7.
88. Gika HG, Theodoridis GA, Wilson ID. Liquid chromatography and ultra-performance liquid chromatography-mass spectrometry fingerprinting of human urine: sample stability under different handling and storage conditions for metabolomics studies. *J Chromatogr A* 2008;1189:314-22.
89. Saude EJ, Sykes BD. Urine stability for metabolomic studies: effects of preparation and storage. *Metabolomics* 2007;3:19-27.
90. Nicholson G, Rantalainen M, Maher AD, Li JV, Malmodin D, Ahmadi KR, et al. Human metabolic profiles are stably controlled by genetic and environmental variation. *Mol Syst Biol* 2011;7:525.
91. Floegel A, Drogan D, Wang-Sattler R, Prehn C, Illig T, Adamski J, et al. Reliability of serum metabolite concentrations over a 4-month period using a targeted metabolomic approach. *PLoS One* 2011;6:e21103.
92. Sampson JN, Boca SM, Shu XO, Stolzenberg-Solomon RZ, Matthews CE, Hsing AW, et al. Metabolomics in epidemiology: sources of variability in metabolite measurements and implications. *Cancer Epidemiol Biomarkers Prev* 2013;22:631-40.
93. Deda O, Gika HG, Wilson ID, Theodoridis GA. An overview of fecal sample preparation for global metabolic profiling. *J Pharm Biomed Anal* 2015;113:137-50.
94. Theodoridis GA, Gika HG, Want EJ, Wilson ID. Liquid chromatography-mass spectrometry based global metabolite profiling: a review. *Anal Chim Acta* 2012;711:7-16.
95. Gilbert JA, Quinn RA, Debelius J, Xu ZZ, Morton J, Garg N, et al. Microbiome-wide association studies link dynamic microbial consortia to disease. *Nature* 2016;535:94-103.
96. Smirnov KS, Maier TV, Walker A, Heinzmann SS, Forcisi S, Martinez I, et al. Challenges of metabolomics in human gut microbiota research. *Int J Med Microbiol* 2016;306:266-79.
97. Gratton J, Phetcharaburanin J, Mullish BH, Williams HR, Thursz M, Nicholson JK, et al. Optimized sample handling strategy for metabolic profiling of human feces. *Anal Chem* 2016;88:4661-8.
98. Zeevi D, Korem T, Zmora N, Israeli D, Rothschild D, Weinberger A, et al. Personalized nutrition by prediction of glycemic responses. *Cell* 2015;163:1079-94.
99. Lofffield E, Vogtmann E, Sampson JN, Moore SC, Nelson H, Knight R, et al. Comparison of collection methods for fecal samples for discovery metabolomics in epidemiologic studies. *Cancer Epidemiol Biomarkers Prev* 2016;25:1483-90.
100. Monleon D, Morales JM, Barrasa A, Lopez JA, Vazquez C, Celda B. Metabolite profiling of fecal water extracts from human colorectal cancer. *NMR Biomed* 2009;22:342-8.
101. Marchesi JR, Holmes E, Khan F, Kochhar S, Scanlan P, Shanahan F, et al. Rapid and noninvasive metabolomic characterization of inflammatory bowel disease. *J Proteome Res* 2007;6:546-51.
102. Saric J, Wang Y, Li J, Coen M, Utzinger J, Marchesi JR, et al. Species variation in the fecal metabolome gives insight into differential gastrointestinal function. *J Proteome Res* 2007;7:352-60.
103. Jacobs DM, Deltimple N, van Velzen E, van Dorsten FA, Bingham M, Vaughan EE, van Duynhoven J. 1H NMR metabolite profiling of feces as a tool to assess the impact of nutrition on the human microbiome. *NMR Biomed* 2008;21:615-26.
104. Zheng H, Yde CC, Clausen MR, Kristensen M, Lorenzen J, Astrup A, Bertram HC. Metabolomics investigation to shed light on cheese as a possible piece in the French paradox puzzle. *J Agric Food Chem* 2015;63:

- 2830–9.
105. Phua LC, Koh PK, Cheah PY, Ho HK, Chan ECY. Global gas chromatography/time-of-flight mass spectrometry (GC/TOFMS)-based metabolomic profiling of lyophilized human feces. *J Chromatogr B* 2013;937:103–13.
 106. Raman M, Ahmed I, Gillevet PM, Probert CS, Ratcliffe NM, Smith S, et al. Fecal microbiome and volatile organic compound metabolite in obese humans with nonalcoholic fatty liver disease. *Clin Gastroenterol Hepatol* 2013;11:868–75.
 107. Kia E, Mackenzie BW, Middleton D, Lau A, Waite DW, Lewis G, et al. Integrity of the human faecal microbiota following long-term sample storage. *PLoS One* 2016;11:e0163666.
 108. Morris LS, Marchesi JR. Assessing the impact of long term frozen storage of faecal samples on protein concentration and protease activity. *J Microbiol Methods* 2016;123:31–8.
 109. Cardona S, Eck A, Cassellas M, Gallart M, Alastrue C, Dore J, et al. Storage conditions of intestinal microbiota matter in metagenomic analysis. *BMC Microbiol* 2012;12:158.
 110. Figueira J, Jonsson P, Adolffson AN, Adolffson R, Nyberg L, Öhman A. NMR analysis of the human saliva metabolome distinguishes dementia patients from matched controls. *Mol Biosyst* 2016;12:2562–71.
 111. Liang Q, Liu H, Li X, Zhang A-H. High-throughput metabolomics analysis discovers salivary biomarkers for predicting mild cognitive impairment and Alzheimer's disease. *RSC Adv* 2016;6:75499–504.
 112. Ishikawa S, Sugimoto M, Kitabatake K, Sugano A, Nakamura M, Kaneko M, et al. Identification of salivary metabolomic biomarkers for oral cancer screening. *Sci Rep* 2016;6:31520.
 113. Mikkonen JJ, Singh SP, Herrala M, Lappalainen R, Myllymaa S, Kullaa AM. Salivary metabolomics in the diagnosis of oral cancer and periodontal diseases. *J Periodontol Res* 2016;51:431–7.
 114. Prodan A, Imangaliyev S, Brand HS, Rosema MN, Levin E, Crielaard W, et al. Effect of experimental gingivitis induction and erythritol on the salivary metabolome and functional biochemistry of systemically healthy young adults. *Metabolomics* 2016;12:147.
 115. Rahmioglu N, Fassbender A, Vitoon AF, Tworoger SS, Hummelshoj L, D'Hooghe TM, et al. World endometriosis research foundation endometriosis phenome and biobanking harmonization project: III. Fluid biospecimen collection, processing, and storage in endometriosis research. *Fertil Steril* 2014;102:1233–43.
 116. Santone C, Dinallo V, Paci M, D'Ottavio S, Barbato G, Bernardini S. Saliva metabolomics by NMR for the evaluation of sport performance. *J Pharm Biomed Anal* 2014;88:441–6.
 117. Bertram HC, Eggers N, Eller N. Potential of human saliva for nuclear magnetic resonance-based metabolomics and for health-related biomarker identification. *Anal Chem* 2009;81:9188–93.
 118. Wang Q, Gao P, Wang X, Duan Y. The early diagnosis and monitoring of squamous cell carcinoma via saliva metabolomics. *Sci Rep* 2014;4:6802.
 119. Neyraud E, Tremblay-Franco M, Gregoire S, Berdeaux O, Canlet C. Relationships between the metabolome and the fatty acid composition of human saliva; effects of stimulation. *Metabolomics* 2013;9:213–22.
 120. Sugimoto M, Wong DT, Hirayama A, Soga T, Tomita M. Capillary electrophoresis mass spectrometry-based saliva metabolomics identified oral, breast and pancreatic cancer-specific profiles. *Metabolomics* 2010;6:78–95.
 121. Schipper RG, Silletti E, Vingerhoeds MH. Saliva as research material: biochemical, physicochemical and practical aspects. *Arch Oral Biol* 2007;52:1114–35.
 122. Teunissen C, Petzold A, Bennett J, Berven F, Brundin L, Comabella M, et al. A consensus protocol for the standardization of cerebrospinal fluid collection and biobanking. *Neurology* 2009;73:1914–22.
 123. Rosenling T, Slim CL, Christin C, Coulier L, Shi S, Stoop MP, et al. The effect of preanalytical factors on stability of the proteome and selected metabolites in cerebrospinal fluid (CSF). *J Proteome Res* 2009;8:5511–22.
 124. Otto M, Bowser R, Turner M, Berry J, Bretschneider J, Connor J, et al. Roadmap and standard operating procedures for biobanking and discovery of neurochemical markers in ALS. *Amyotroph Lateral Scler* 2012;13:1–10.
 125. Aasebø E, Opsahl JA, Bjørlykke Y, Myhr K-M, Kroksveen AC, Berven FS. Effects of blood contamination and the rostro-caudal gradient on the human cerebrospinal fluid proteome. *PLoS One* 2014;9:e90429.
 126. de Paiva MJN, Menezes HC, de Lourdes Cardeal Z. Sampling and analysis of metabolomes in biological fluids. *Analyst* 2014;139:3683–94.
 127. Lewczuk P, Beck G, Esselmann H, Bruckmoser R, Zimmermann R, Fiszer M, et al. Effect of sample collection tubes on cerebrospinal fluid concentrations of tau proteins and amyloid β peptides. *Clin Chem* 2006;52:332–4.
 128. Blasco H, Corcia P, Pradat P-Fo, Bocca C, Gordon PH, Veyrat-Durebex C, et al. Metabolomics in cerebrospinal fluid of patients with amyotrophic lateral sclerosis: an untargeted approach via high-resolution mass spectrometry. *J Proteome Res* 2013;12:3746–54.
 129. Yoshimi N, Futamura T, Bergen S, Iwayama Y, Ishima T, Sellgren C, et al. Cerebrospinal fluid metabolomics identifies a key role of isocitrate dehydrogenase in bipolar disorder: evidence in support of mitochondrial dysfunction hypothesis. *Mol Psychiatry* 2016.
 130. Willems EA, Teunissen CE. Importance of pre-analytical stability for CSF biomarker testing. In: Deisenhammer F, Sellebjerg F, Teunissen C, Tumani H, editors. *Cerebrospinal fluid in clinical neurology*. New York (NY): Springer; 2015. p. 59–77.
 131. Greene KA, Faull KF. Relationship between plasma and cerebrospinal fluid norepinephrine and dopamine metabolites in a nonhuman primate. *J Neurochem* 1989;53:1007–13.
 132. Hibbeln JR, Linnola M, Umhau JC, Rawlings R, George DT, Salem N. Essential fatty acids predict metabolites of serotonin and dopamine in cerebrospinal fluid among healthy control subjects, and early- and late-onset alcoholics. *Biol Psychiatry* 1998;44:235–42.
 133. Hibbeln JR, Umhau JC, Linnola M, George DT, Ragan PW, Shoaf SE, et al. A replication study of violent and nonviolent subjects: cerebrospinal fluid metabolites of serotonin and dopamine are predicted by plasma essential fatty acids. *Biol Psychiatry* 1998;44:243–9.
 134. Wardlaw SL, Burant CF, Klein S, Meece K, White A, Kasten T, et al. Continuous 24-hour leptin, proopiomelanocortin, and amino acid measurements in human cerebrospinal fluid: correlations with plasma leptin, soluble leptin receptor, and amino acid levels. *J Clin Endocrinol Metab* 2014;99:2540–8.
 135. Mena-Bravo A, De Castro ML. Sweat: a sample with limited present applications and promising future in metabolomics. *J Pharm Biomed Anal* 2014;90:139–47.
 136. Marincola FC, Dessi A, Corbu S, Reali A, Fanos V. Clinical impact of human breast milk metabolomics. *Clin Chim Acta* 2015;451:103–6.
 137. Galbis-Estrada C, Pinazo-Durán MD, Martínez-Castillo S, Morales JM, Monleón D, Zanon-Moreno V. A metabolomic approach to dry eye disorders. The role of oral supplements with antioxidants and omega 3 fatty acids. *Mol Vis* 2015;21:555.
 138. Vouk K, Ribič-Pucelj M, Adamski J, Rižner TL. Altered levels of acylcarnitines, phosphatidylcholines, and sphingomyelins in peritoneal fluid from ovarian endometriosis patients. *J Steroid Biochem Mol Biol* 2016;159:60–9.
 139. Marianna S, Alessia P, Susan C, Francesca C, Angela S, Francesca C, et al. Metabolomic profiling and biochemical evaluation of the follicular fluid of endometriosis patients. *Mol Biosyst* 2017;13:1213–22.
 140. Zhang W, Sun G, Likhodii S, Aref-Eshghi E, Harper PE, Randell E, et al. Metabolomic analysis of human synovial fluid and plasma reveals that phosphatidylcholine metabolism is associated with both osteoarthritis and diabetes mellitus. *Metabolomics* 2016;12:24.
 141. Zheng K, Shen N, Chen H, Ni S, Zhang T, Hu M, et al. Global and targeted metabolomics of synovial fluid discovers special osteoarthritis metabolites. *J Orthop Res* 2017;35:1973–81.
 142. Amann A, de Lacy Costello B, Miekisch W, Schubert J, Buszewski B, Pleil J, et al. The human volatome: volatile organic compounds (VOCs) in exhaled breath, skin emanations, urine, feces and saliva. *J Breath Res* 2014;8:034001.
 143. Förster Y, Schmidt JR, Wissenbach DK, Pfeiffer SE, Baumann S, Hofbauer LC, et al. Microdialysis sampling from wound fluids enables quantitative assessment of cytokines, proteins, and metabolites reveals bone defect-specific molecular profiles. *PLoS One* 2016;11:e0159580.
 144. Carpenter KL, Jalloh I, Gallagher CN, Grice P, Howe DJ, Mason A, et al. 13 C-labelled microdialysis studies of cerebral metabolism in TBI patients. *Eur J Pharm Sci* 2014;57:87–97.
 145. Du J, Gridneva Z, Gay MC, Lai CT, Trengove RD, Hartmann PE, Geddes DT. Longitudinal study of pesticide residue levels in human milk from Western Australia during 12 months of lactation: exposure assessment for infants. *Sci Rep* 2016;6.
 146. Villasenör A, Garcia-Perez I, Garcia A, Posma JM, Fernández-López M, Nicholas AJ, et al. Breast milk metabolome characterization in a single-phase extraction, multiparameter analytical approach. *Anal Chem* 2014;86:8245–52.
 147. Horvath I, Hunt J, Barnes P. Exhaled breath condensate: methodological recommendations and unresolved questions. *Eur Respir J* 2005;26:523–48.
 148. Horváth I, Barnes PJ, Loukides S, Sterk PJ, Högman M, Olin A-C, et al. A European Respiratory Society technical standard: exhaled biomarkers in lung disease. *Eur Respir J* 2017;49:1600965.
 149. De Vries RG, Tomlinson T, Kim HM, Krenz C, Haggerty D, Ryan KA, Kim SY. Understanding the public's reservations about broad consent and study-by-study consent for donations to a biobank: results of a national survey. *PLoS One* 2016;11:e0159113.
 150. Heeney C, Hawkins N, de Vries J, Boddington P, Kaye J. Assessing the privacy risks of data sharing in genomics. *Public Health Genomics* 2011;14:17–25.
 151. Nelson S. Geneticists should offer data to participants. *Nature News* 2016;539:7.
 152. Robinson JO, Carroll TM, Feuerman LZ, Perry DL, Hoffman-Andrews L, Walsh RC, et al. Participants and study decliners' perspectives about the risks of partic-

- ipating in a clinical trial of whole genome sequencing. *J Empir Res Hum Res Ethics* 2016;11:21–30.
153. Croxton T, Swanepoel C, Musinguzi H, Kader M, Ozumba P, Pillay A-D, et al. Lessons learned from bio-specimen shipping among the human heredity and health in Africa biorepositories. *Biopreserv Biobank* 2017;15:103–10.
 154. UK Biobank. <http://www.ukbiobank.ac.uk/wp-content/uploads/2011/11/UK-Biobank-Protocol.pdf>. (Accessed August 2017).
 155. Helmholtz Zentrum München. https://www.helmholtz-muenchen.de/fileadmin/GAC/Metabolomics/20140217_HMGU_Metabolomic_Platform_guide_lines.pdf. (Accessed January 2018).
 156. Cheema AK, Suman S, Kaur P, Singh R, Fornace AJ Jr, Datta K. Long-term differential changes in mouse intestinal metabolomics after γ and heavy ion radiation exposure. *PLoS One* 2014;9:e87079.
 157. Wu H, Southam AD, Hines A, Viant MR. High-throughput tissue extraction protocol for NMR- and MS-based metabolomics. *Anal Biochem* 2008;372:204–12.
 158. Sarfaraz MO, Myers RP, Coffin CS, Gao Z-H, Shaheen AAM, Crotty PM, et al. A quantitative metabolomics profiling approach for the noninvasive assessment of liver histology in patients with chronic hepatitis C. *Clin Transl Med* 2016;5:33.
 159. Garvey SM, Dugle JE, Kennedy AD, McDunn JE, Kline W, Guo L, et al. Metabolomic profiling reveals severe skeletal muscle group-specific perturbations of metabolism in aged FBN rats. *Biogerontology* 2014;15:217–32.
 160. Zhang T, Wang W, Huang J, Liu X, Zhang H, Zhang N. Metabolomic investigation of regional brain tissue dysfunctions induced by global cerebral ischemia. *BMC Neurosci* 2016;17:25.
 161. El Rammouz R, Létisse F, Durand S, Portais J-C, Moussa ZW, Fernandez X. Analysis of skeletal muscle metabolome: evaluation of extraction methods for targeted metabolite quantification using liquid chromatography tandem mass spectrometry. *Anal Biochem* 2010;398:169–77.
 162. Wang W, Guo H, Zhang S-X, Li J, Cheng K, Bai S-J, et al. Targeted metabolomic pathway analysis and validation revealed glutamatergic disorder in the prefrontal cortex among the chronic social defeat stress mice model of depression. *J Proteome Res* 2016;15:3784–92.
 163. Hong Y, Ho KS, Eu KW, Cheah PY. A susceptibility gene set for early onset colorectal cancer that integrates diverse signaling pathways: implication for tumorigenesis. *Clin Cancer Res* 2007;13:1107–14.
 164. Wang H, Wang L, Zhang H, Deng P, Chen J, Zhou B, et al. (1)H NMR-based metabolic profiling of human rectal cancer tissue. *Mol Cancer* 2013;12:121.
 165. Denkert C, Budczies J, Weichert W, Wohlgemuth G, Scholz M, Kind T, et al. Metabolite profiling of human colon carcinoma—deregulation of TCA cycle and amino acid turnover. *Mol Cancer* 2008;7:72.
 166. Horgan R, Broadhurst D, Dunn W, Brown M, Heazell A, Kell D, et al. Changes in the metabolic footprint of placental explant-conditioned medium cultured in different oxygen tensions from placentas of small for gestational age and normal pregnancies. *Placenta* 2010;31:893–901.
 167. Heazell A, Brown M, Dunn W, Worton S, Crocker I, Baker P, Kell D. Analysis of the metabolic footprint and tissue metabolome of placental villous explants cultured at different oxygen tensions reveals novel redox biomarkers. *Placenta* 2008;29:691–8.
 168. Lane AN, Fan TW-M, Bousamra M, Higashi RM, Yan J, Miller DM. Stable isotope-resolved metabolomics (SIRM) in cancer research with clinical application to non-small cell lung cancer. *OMICS* 2011;15:173–82.
 169. Sellers K, Fox MP, Bousamra M, Slone SP, Higashi RM, Miller DM, et al. Pyruvate carboxylase is critical for non-small-cell lung cancer proliferation. *J Clin Invest* 2015;125:687.
 170. Calderón-Santiago M, Priego-Capote F, Jurado-Gómez B, de Castro ML. Optimization study for metabolomics analysis of human sweat by liquid chromatography–tandem mass spectrometry in high resolution mode. *J Chromatogr A* 2014;1333:70–8.
 171. Calderón-Santiago M, Priego-Capote F, Turck N, Robin X, Jurado-Gómez B, Sanchez JC, De Castro MDL. Human sweat metabolomics for lung cancer screening. *Anal Bioanal Chem* 2015;407:5381–92.
 172. Delgado-Povedano M, Calderón-Santiago M, Priego-Capote F, de Castro ML. Study of sample preparation for quantitative analysis of amino acids in human sweat by liquid chromatography–tandem mass spectrometry. *Talanta* 2016;146:310–7.
 173. Delgado-Povedano M, Calderón-Santiago M, Priego-Capote F, de Castro ML. Development of a method for enhancing metabolomics coverage of human sweat by gas chromatography–mass spectrometry in high resolution mode. *Anal Chim Acta* 2016;905:115–25.
 174. Agrawal K, Hassoun LA, Foadal N, Pedersen TL, Sivamani RK, Newman JW. Sweat lipid mediator profiling: a noninvasive approach for cutaneous research. *J Lipid Res* 2017;58:188–95.
 175. Kutysenko VP, Molchanov M, Beskaravayna P, Uversky VN, Timchenko MA. Analyzing and mapping sweat metabolomics by high-resolution NMR spectroscopy. *PLoS One* 2011;6:e28824.
 176. Heikenfeld J. Non-invasive analyte access and sensing through eccrine sweat: challenges and outlook circa 2016. *Electroanalysis* 2016;28:1242–9.
 177. Andreas NJ, Hyde MJ, Gomez-Romero M, Lopez-Gonzalez MA, Villaseñor A, Wijeyesekera A, et al. Multiplatform characterization of dynamic changes in breast milk during lactation. *Electrophoresis* 2015;36:2269–85.
 178. Spevacek AR, Smilowitz JT, Chin EL, Underwood MA, German JB, Slupsky CM. Infant maturity at birth reveals minor differences in the maternal milk metabolome in the first month of lactation. *J Nutr* 2015;jn210252.
 179. Moraes T, Lefebvre D, Chooniedass R, Becker A, Brook J, Denburg J, et al. The Canadian healthy infant longitudinal development birth cohort study: biological samples and biobanking. *Paediatr Perinat Epidemiol* 2015;29:84–92.
 180. Qian L, Zhao A, Zhang Y, Chen T, Zeisel SH, Jia W, Cai W. Metabolomic approaches to explore chem diversity of human breast-milk, formula milk and bovine milk. *Int J Mol Sci* 2016;17:2128.
 181. Wu J, Domellöf M, Zivkovic AM, Larsson G, Öhman A, Nording ML. NMR-based metabolite profiling of human milk: a pilot study of methods for investigating compositional changes during lactation. *Biochem Biophys Res Commun* 2016;469:626–32.
 182. Chen L, Zhou L, Chan EC, Neo J, Beuerman RW. Characterization of the human tear metabolome by LC-MS/MS. *J Proteome Res* 2011;10:4876–82.
 183. Dielien GA, Rothman DL, Nordström C-H. Microdialysate concentration changes do not provide sufficient information to evaluate metabolic effects of lactate supplementation in brain-injured patients. *Fordham Law Rev* 2016;36:1844–64.
 184. Gallagher CN, Carpenter KL, Grice P, Howe DJ, Mason A, Timofeev I, et al. The human brain utilizes lactate via the tricarboxylic acid cycle: a 13C-labelled microdialysis and high-resolution nuclear magnetic resonance study. *Brain* 2009;awp202.
 185. West JA, Beqqali A, Ament Z, Elliott P, Pinto YM, Arbustini E, Griffin JL. A targeted metabolomics assay for cardiac metabolism and demonstration using a mouse model of dilated cardiomyopathy. *Metabolomics* 2016;12:59.
 186. McCombie G, Medina-Gomez G, Lelliott CJ, Vidal-Puig A, Griffin JL. Metabolomic and lipidomic analysis of the heart of peroxisome proliferator-activated receptor- γ coactivator 1- β knock out mice on a high fat diet. *Metabolites* 2012;2:366–81.
 187. Shibayama J, Yuzyuk TN, Cox J, Makaju A, Miller M, Lichter J, et al. Metabolic remodeling in moderate synchronous versus dysynchronous pacing-induced heart failure: integrated metabolomics and proteomics study. *PLoS One* 2015;10:e0118974.
 188. Battini S, Faitot F, Imperiale A, Cicek A, Heimbürger C, Averous G, et al. Metabolomic approaches in pancreatic adenocarcinoma: tumor metabolism profiling predicts clinical outcome of patients. *BMC Med* 2017;15:56.
 189. Yabushita S, Fukamachi K, Tanaka H, Fukuda T, Sumida K, Deguchi Y, et al. Metabolomic and transcriptomic profiling of human K-ras oncogene transgenic rats with pancreatic ductal adenocarcinomas. *Carcinogenesis* 2013;34:1251–9.
 190. Tan SZ, Mullard G, Hollywood KA, Dunn WB, Bishop PN. Characterisation of the metabolome of ocular tissues and post-mortem changes in the rat retina. *Exp Eye Res* 2016;149:8–15.
 191. Santiago A, Garrido M, Cristóvão A, Duarte J, Carvalho R, Ambrósio A. Evaluation of the impact of diabetes on retinal metabolites by NMR spectroscopy. *Curr Eye Res* 2010;35:992–1001.
 192. Fassbender A, Rahmioglu N, Vitonis AF, Viganò P, Giudice LC, D'Hooghe TM, et al. World endometriosis research foundation endometriosis phenome and biobanking harmonisation project: IV. Tissue collection, processing, and storage in endometriosis research. *Fertil Steril* 2014;102:1244–53.
 193. Dassen H, Punyadeera C, Kamps R, Delvoux B, Van Langendonck A, Donnez J, et al. Estrogen metabolizing enzymes in endometrium and endometriosis. *Hum Reprod* 2007;22:3148–58.
 194. Xiao X, Hu M, Liu M, Hu JZ. 1H NMR metabolomics study of spleen from C57BL/6 mice exposed to gamma radiation. *Metabolomics* 2016;6:1–11.
 195. Le Roy CI, Mappley LJ, La Ragione RM, Woodward MJ, Claus SP. NMR-based metabolic characterization of chicken tissues and biofluids: a model for avian research. *Metabolomics* 2016;12:157.
 196. Jung J, Jung Y, Gill B, Kim C, Hwang K-J, Ju Y-R, et al. Metabolic responses to *Orientia tsutsugamushi* infection in a mouse model. *PLoS Negl Trop Dis* 2015;9:e03427.
 197. Griffin J, Troke J, Walker L, Shore R, Linton J, Nicholson J. The biochemical profile of rat testicular tissue as measured by magic angle spinning 1H NMR spectroscopy. *FEBS Lett* 2000;486:225–9.
 198. Mushahwar IK, Koeppe RE. Free amino acids of testes. Concentrations of free amino acids in the testes of several species and the precursors of glutamate and glutamine in rat testes in vivo. *Biochem J* 1973;132:353–9.
 199. Cheng S, Wiklund P, Autio R, Borra R, Ojanen X, Xu L, et al. Adipose tissue dysfunction and altered systemic amino acid metabolism are associated with non-alcoholic fatty liver disease. *PLoS One* 2015;10:

- e0138889.
200. Yakoub D, Keun HC, Goldin R, Hanna GB. Metabolic profiling detects field effects in nondysplastic tissue from esophageal cancer patients. *Cancer Res* 2010; 70:9129–36.
 201. WorldWide Antimalarial Resistance Network. www.warn.org/sites/default/files/DBSSampleCollectionAndTransportation.doc. (Accessed August 2017).
 202. Bezabeh T, Somorjai R, Dolenko B, Bryskina N, Levin B, Bernstein C, et al. Detecting colorectal cancer by 1H magnetic resonance spectroscopy of fecal extracts. *NMR Biomed* 2009;22:593–600.
 203. Le Gall G, Noor SO, Ridgway K, Scovell L, Jamieson C, Johnson IT, et al. Metabolomics of fecal extracts detects altered metabolic activity of gut microbiota in ulcerative colitis and irritable bowel syndrome. *J Proteome Res* 2011;10:4208–18.
 204. Bjerrum JT, Wang Y, Hao F, Coskun M, Ludwig C, Günther U, Nielsen OH. Metabonomics of human fecal extracts characterize ulcerative colitis, Crohn's disease and healthy individuals. *Metabolomics* 2015; 11:122–33.
 205. Gao X, Pujos-Guillot E, Martin J-F, Galan P, Juste C, Jia W, Sebedio J-L. Metabolite analysis of human fecal water by gas chromatography/mass spectrometry with ethyl chloroformate derivatization. *Anal Biochem* 2009;393:163–75.
 206. Gao X, Pujos-Guillot E, Sébédio J-L. Development of a quantitative metabolomic approach to study clinical human fecal water metabolome based on trimethylsilylation derivatization and GC/MS analysis. *Anal Chem* 2010;82:6447–56.
 207. Ponnusamy K, Choi JN, Kim J, Lee S-Y, Lee CH. Microbial community and metabolomic comparison of irritable bowel syndrome faeces. *J Med Microbiol* 2011; 60:817–27.
 208. Poroyko V, Morowitz M, Bell T, Ulanov A, Wang M, Donovan S, et al. Diet creates metabolic niches in the “inmature gut” that shape microbial communities. *Nutr Hosp* 2011;26:1283–95.
 209. Ng JSY, Ryan U, Trengove RD, Maker GL. Development of an untargeted metabolomics method for the analysis of human faecal samples using *Cryptosporidium*-infected samples. *Mol Biochem Parasitol* 2012;185:145–50.
 210. Weir TL, Manter DK, Shefflin AM, Barnett BA, Heuberger AL, Ryan EP. Stool microbiome and metabolome differences between colorectal cancer patients and healthy adults. *PLoS One* 2013;8:e70803.
 211. Goedert JJ, Sampson JN, Moore SC, Xiao Q, Xiong X, Hayes RB, et al. Fecal metabolomics: assay performance and association with colorectal cancer. *Carcinogenesis* 2014;35:2089–96.
 212. Hintze KJ, Cox JE, Rompato G, Benninghoff AD, Ward RE, Broadbent J, Lefevre M. Broad scope method for creating humanized animal models for animal health and disease research through antibiotic treatment and human fecal transfer. *Gut Microbes* 2014;5:183–91.
 213. Ahmed I, Greenwood R, Costello B, Ratcliffe N, Probert C. Investigation of faecal volatile organic metabolites as novel diagnostic biomarkers in inflammatory bowel disease. *Adv Pediatr* 2016;43:596–611.
 214. Cao H, Huang H, Xu W, Chen D, Yu J, Li J, Li L. Fecal metabolome profiling of liver cirrhosis and hepatocellular carcinoma patients by ultra performance liquid chromatography–mass spectrometry. *Anal Chim Acta* 2011;691:68–75.
 215. Girlanda R, Cheema A, Kaur P, Kwon Y, Li A, Guerra J, et al. Metabolomics of human intestinal transplant rejection. *Am J Transplant* 2012;12S18–26.
 216. Huang H-J, Zhang A-Y, Cao H-C, Lu H-F, Wang B-H, Xie Q, et al. Metabolomic analyses of faeces reveals malabsorption in cirrhotic patients. *Dig Liver Dis* 2013; 45:677–82.
 217. Tomitsuka E, Igai K, Tadokoro K, Morita A, Baba J, Suda W, et al. Profiling of faecal water and urine metabolites among Papua New Guinea highlanders believed to be adapted to low protein intake. *Metabolomics* 2017;13:105.