

Bårdsen, Gunnar; den Reijer, Ard; Jonasson, Patrik; Nymoén, Ragnar

**Working Paper**

## MOSES: Model of Swedish economic studies

Sveriges Riksbank Working Paper Series, No. 249

**Provided in Cooperation with:**

Central Bank of Sweden, Stockholm

*Suggested Citation:* Bårdsen, Gunnar; den Reijer, Ard; Jonasson, Patrik; Nymoén, Ragnar (2011) : MOSES: Model of Swedish economic studies, Sveriges Riksbank Working Paper Series, No. 249, Sveriges Riksbank, Stockholm

This Version is available at:

<http://hdl.handle.net/10419/81858>

**Standard-Nutzungsbedingungen:**

Die Dokumente auf EconStor dürfen zu eigenen wissenschaftlichen Zwecken und zum Privatgebrauch gespeichert und kopiert werden.

Sie dürfen die Dokumente nicht für öffentliche oder kommerzielle Zwecke vervielfältigen, öffentlich ausstellen, öffentlich zugänglich machen, vertreiben oder anderweitig nutzen.

Sofern die Verfasser die Dokumente unter Open-Content-Lizenzen (insbesondere CC-Lizenzen) zur Verfügung gestellt haben sollten, gelten abweichend von diesen Nutzungsbedingungen die in der dort genannten Lizenz gewährten Nutzungsrechte.

**Terms of use:**

*Documents in EconStor may be saved and copied for your personal and scholarly purposes.*

*You are not to copy documents for public or commercial purposes, to exhibit the documents publicly, to make them publicly available on the internet, or to distribute or otherwise use the documents in public.*

*If the documents have been made available under an Open Content Licence (especially Creative Commons Licences), you may exercise further usage rights as specified in the indicated licence.*

SVERIGES RIKSBANK  
WORKING PAPER SERIES

249



# MOSES: Model of Swedish Economic Studies

*Gunnar Bårdsen, Ard den Reijer,  
Patrik Jonasson and Ragnar Nymoen*

JANUARY 2011

WORKING PAPERS ARE OBTAINABLE FROM

Sveriges Riksbank • Information Riksbank • SE-103 37 Stockholm  
Fax international: +46 8 787 05 26  
Telephone international: +46 8 787 01 00  
E-mail: [info@riksbank.se](mailto:info@riksbank.se)

The Working Paper series presents reports on matters in the sphere of activities of the Riksbank that are considered to be of interest to a wider public.

The papers are to be regarded as reports on ongoing studies and the authors will be pleased to receive comments.

The views expressed in Working Papers are solely the responsibility of the authors and should not be interpreted as reflecting the views of the Executive Board of Sveriges Riksbank.

# MOSES: Model of Swedish Economic Studies.\*

Gunnar Bårdsen<sup>†</sup>, Ard den Reijer<sup>‡</sup>, Patrik Jonasson<sup>§</sup> and Ragnar Nymoen<sup>¶</sup>

Sveriges Riksbank Working Paper Series  
No. 249

January 2011

## Abstract

MOSES is an aggregate econometric model for Sweden, estimated on quarterly data, and intended for short-term forecasting and policy simulations. After a presentation of qualitative model properties, the econometric methodology is summarized. The model properties, within sample simulations, and examples of dynamic simulation (model forecasts) for the period 2009q2-2012q4 are presented. We address practical issues relating to operational use and maintenance of a macro model of this type. The detailed econometric equations are reported in an appendix.

---

\*We are grateful to Ulf Söderström for very helpful and detailed comments. Gunnar Bårdsen and Ragnar Nymoen worked as consultants for the Riksbank on this project. The views expressed in this paper are solely the responsibility of the authors and should not be interpreted as reflecting the views of the Executive Board of Sveriges Riksbank.

<sup>†</sup>NTNU Norwegian University of Science and Technology, Trondheim.  
E-mail: Gunnar.Bardsen@svt.ntnu.no

<sup>‡</sup>Sveriges Riksbank, Monetary Policy Department, SE-103 37 Stockholm, Sweden.  
E-mail: Ard.den.Reijer@riksbank.se

<sup>§</sup>Sveriges Riksbank, Monetary Policy Department, SE-103 37 Stockholm, Sweden.  
E-mail: Patrik.Jonasson@riksbank.se

<sup>¶</sup>University of Oslo, Department of Economics. E-mail: Ragnar.Nymoen@econ.uio.no

# Contents

<b>1</b>	<b>Introduction</b>	<b>1</b>
<b>2</b>	<b>Qualitative properties of MOSES</b>	<b>1</b>
2.1	A simplified analytical exposition . . . . .	2
2.2	An alternative graphical exposition . . . . .	3
<b>3</b>	<b>Aspects in the design of MOSES</b>	<b>4</b>
3.1	The wage-price spiral (the aggregate supply relationship) . . . . .	4
3.1.1	Optimal price and wage levels . . . . .	5
3.1.2	Identification and cointegration . . . . .	6
3.1.3	Equilibrium correction model of the wage-price spiral . . . . .	7
3.1.4	Phillips curve model of the wage-price spiral. . . . .	8
3.2	Monetary and fiscal policy . . . . .	8
3.2.1	Monetary policy . . . . .	8
3.2.2	Fiscal policy . . . . .	9
<b>4</b>	<b>Methodology</b>	<b>11</b>
4.1	From a discretized and linearized cointegrated VAR representation to a dynamic SEM in three steps . . . . .	12
4.1.1	First step: the statistical system . . . . .	12
4.1.2	Second step: the overidentified steady state . . . . .	13
4.1.3	Third step: the dynamic SEM . . . . .	13
4.2	Automatic model selection . . . . .	14
<b>5</b>	<b>Dynamic properties of MOSES</b>	<b>14</b>
5.1	Adjustment speed and steady-state . . . . .	15
5.2	In-sample dynamic simulations . . . . .	17
5.3	Effects of monetary policy . . . . .	17
<b>6</b>	<b>MOSES forecasts</b>	<b>18</b>
<b>7</b>	<b>Forecast evaluations</b>	<b>20</b>
<b>8</b>	<b>Conclusions</b>	<b>26</b>
<b>A</b>	<b>Appendix: Econometric results</b>	<b>29</b>
<b>B</b>	<b>Appendix: Data definitions</b>	<b>34</b>

# 1 Introduction

MOSES is an aggregate econometric model for Sweden, intended mainly for short-term forecasting and policy analysis. This documentation first gives a presentation of qualitative model properties, with the aid of flow charts and with reference to standard macroeconomic theory. The theory behind some key aspects of the model are then discussed in more detail, before the econometric methodology used in the specification of the model is summarized. A presentation of the model properties follows in the form of simulations. Forecasts from the model for the period 2009(3)-2012(4) are presented. Finally, a forecast evaluation is conducted. The results of the econometric modelling are reported in detail in an Appendix.

## 2 Qualitative properties of MOSES

Moses is a dynamic econometric model which is relevant for short-term analysis and forecasting of the Swedish economy. The model is aggregate, and MOSES is an attempt to represent several of (the most) important functional relationships in the Swedish macro economy. This is done by econometric modelling of aggregate product demand, interest rate setting, credit growth, the market foreign exchange and wage and price setting equations.

MOSES is a short-term model, but the concept of steady-state nevertheless plays an important role in the shaping of the model's dynamic properties. Data-accepted steady-state theoretical relationships of the different markets of the economy are included in the model as attractors for the endogenous variables of the model.

MOSES is a model with a "high degree of endogeneity" compared to many other models in the systems-of-equations tradition (as opposed to VAR models). For example both public expenditure (a fiscal policy variable) and a rather large number of foreign variables (GDP, prices, and interest rate) are modelled as endogenous variables. This is done in order to generate MOSES forecasts that are for all practical purposes automatically generated from given initial conditions (after the model has been estimated), which can then be compared with the results of other forecasting methods and models that are part of the forecast generating systems.

Figure 1 presents the main functional relationships in MOSES in a flow-chart. The line with a single arrowhead show one-way causation and joint-causation is represented by lines with arrowheads at both ends.

MOSES is a model where almost all variables are endogenous. As seen in the flow-chart, only the oil price (*SPOIL*), the electricity price (*PE*), the degree of accommodative labour market policy (captured by the labour market accommodation rate, *AMUN*, and the replacement rate, *RPR*), are non-modelled variables.

The upper part of the chart contains relationships for the "foreign sector". In the model, all these variables are caused by world oil prices. For example, higher energy prices leads to higher prices on foreign manufactures (*PPI*) and also to higher foreign consumer prices (*PCF*). These increases feed into the domestic wage-price spiral via the equation for import prices (*PM*). But the higher foreign prices *PCF* also affect foreign GDP (*YF*) in the short-run, through their effect on foreign real interest rates (the money market rate *RSF* and the 10 year bond yield rate, *RTYF*). As we have implemented the Taylor principle in foreign interest rate setting, an increase in foreign inflation  $\Delta pcf$  leads to higher foreign real interest rates and a reduction in the growth rate of foreign GDP (*YF*).<sup>1</sup>

Increases in foreign prices, ceteris paribus, also lead to an appreciation of the nominal exchange rate, meaning that the pass-through of foreign prices on import prices and the-

---

<sup>1</sup>Lower case letters denote logs of variables, so  $\Delta x_t \approx \frac{x_t - x_{t-1}}{x_{t-1}}$ .

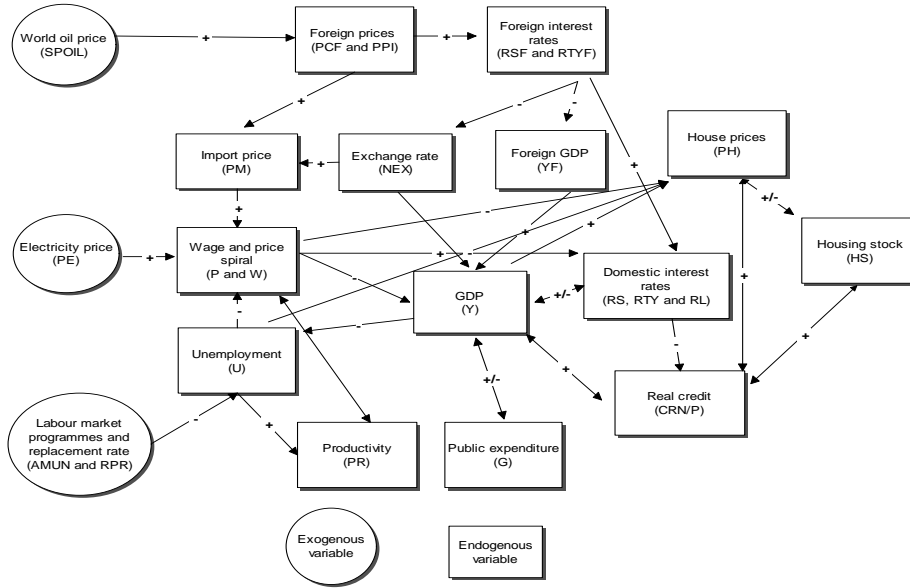


Figure 1: A flow chart of MOSES. Rectangles represent modelled variables; circles represent exogenous variables.

refore on domestic wage and price setting is lowered through exchange rate adjustments. The supply side with the wage-price relationships ( $W$  and  $P$ ) are strongly conditioned by import prices, since Sweden is a small open economy.

If domestic inflation increases, domestic interest rates will adjust upwards, first the “repo-rate” ( $RS$ ), then the bond yield rate ( $RTY$ ) and the interest rate on bank loans ( $RL$ ). Because of the Taylor principle, the corresponding domestic real interest rates increases lead to reduced aggregate demand and GDP ( $Y$ ). Note however, that because of flexible inflation targeting, there is joint causation between GDP and domestic interest rates in the medium-run time perspective (this is also marked by a  $+/-$  on the connector between interest rates and GDP). We have also marked a direct (and negative) influence from domestic inflation on GDP, and this occurs through the real-exchange rate.

Real GDP is of course an important variable in the model. In addition to the real exchange rate and real interest rate, it is strongly conditioned by income abroad ( $YF$ ), and public expenditure ( $G$ ). Domestic GDP is also influenced by the growth of real credit ( $CRN/P$ ), and in turn affects firms’ and households’ willingness to take on higher interest rates payments as a result of higher debt. Hence, there is a credit accelerator in the model. GDP growth is also important the evolution of the rate of unemployment ( $U$ ), through an Okun’s law relationship.

Labour productivity ( $PR$ ) in the model provides the link between the different labour market channels and therefore also sums up the supply-side development, normally following the same positive trend as real wages, but also positively affected by the unemployment rate, in accordance with efficiency wage theories.

## 2.1 A simplified analytical exposition

MOSES covers a large number of markets, and the relevant dynamic relationships between these markets. MOSES is therefore a dynamic model of some complexity. Not counting the identities, MOSES has 20 equations. However, the core of MOSES is easily interpreted in line with most standard macro theories. For example, consider making the following

standard theoretical simplifying assumptions: a closed economy, no public sector, a single interest rate, no debt, no housing market, no energy, no unemployment, productivity follows a stochastic trend, and first-order dynamics. Then the qualitative properties of MOSES could be represented by the following model:

$$\Delta p_t = a_{12}\Delta y_t - c_{11} [p - (w - pr) - \mu_1]_{t-1} \quad (1)$$

$$\Delta y_t = -c_{22} [y + \beta_{23} (R - \Delta p) - \mu_2]_{t-1} \quad (2)$$

$$\Delta R_t = -c_{33} [R_{t-1} - a_{31} (\Delta p_t - \overline{\Delta p}) - a_{32} (\Delta y_t - \overline{\Delta y}) - \mu_3] \quad (3)$$

$$\Delta (w - p - pr)_t = -c_{44} (w - p - pr + \mu_1)_{t-1} \quad (4)$$

$$\Delta pr_t = \mu_5 \quad (5)$$

where in (1) inflation  $\Delta p_t$  is caused by demand effects, represented by the growth rate of real output  $\Delta y_t$ , and real marginal labour costs  $(w - p - pr)$ . The dynamics of real aggregate demand  $\Delta y$  in (2) is driven by the real interest rate  $(R - \Delta p)$ , with  $\mu_2$  representing the average growth of real output. The interest rate  $R$  in (3) is set according to a Taylor rule, reacting to inflation deviating from its target  $(\Delta p_t - \overline{\Delta p})$ , but specified in terms of output growth deviations from target  $(\Delta y_t - \overline{\Delta y})$  rather than potential output—which is not observable. The parameter  $\mu_3$  represents the natural rate of interest. The wage equation (4) is simply a stationary wage share, so  $|c_{44}| < 1$ , and  $\mu_1$  is the log of the long-run wage share. The model is closed by assuming labour productivity follows a random walk with drift  $\mu_5$  in (5). To appreciate the simplifications made for ease of exposition, the MOSES econometric equivalents are given as equations (49), (50), (51), (53) and (60), respectively in the Appendix. Although simple, this standard theory model retains the qualitative aspects of MOSES. We will therefore refer to this theory-model representation when illustrating aspects of the model development below. For example, the theory behind the stylized price-wage model (1) and (4) is given in Section 3.1, with the general versions of the price-wage model given in (21) and (22).

## 2.2 An alternative graphical exposition

The model can also easily be interpreted within the standard dynamic aggregate supply and demand framework, AD-AS for short. In particular if we replace the output-gap variable used in many text-book expositions with the rate of unemployment, which can be shown to depend on domestic inflation and on a number of exogenous variables, for example the rate of foreign inflation, foreign interest rates, foreign GDP, domestic public spending, and predetermined variables such as the last periods real-exchange rate.<sup>2</sup>

The partial relationship between unemployment in period  $t$ , denoted  $u_t$ , and the domestic rate of inflation,  $\pi_t$  is shown as the increasing line, marked AD, in the figure. There are two main mechanisms behind the positive relationship. First, in an inflation targeting monetary policy regime, higher inflation leads to stronger real interest rates as a result of a higher policy interest rate. This reduces domestic demand and increases unemployment. Second, higher inflation usually leads to a higher real exchange rate,  $rex_t$ , since the nominal exchange rate is typically not depreciated so much that the increase in  $\pi_t$  is offset completely. The slope of the AD curve is conditioned by the weights attributed to output/unemployment on the one hand, and inflation on the other, in the monetary policy response function. Specifically, a high weight on output/unemployment implies a steeper AD curve than a policy with little weight on output/unemployment, see e.g. [Sørensen and Whitta-Jacobsen \(2010\)](#).

<sup>2</sup>Although we classify these variables as exogenous in the simplified exposition, this does not mean that all of them are unmodelled in MOSES. For example, both foreign inflation and GDP are endogenous in the full model.



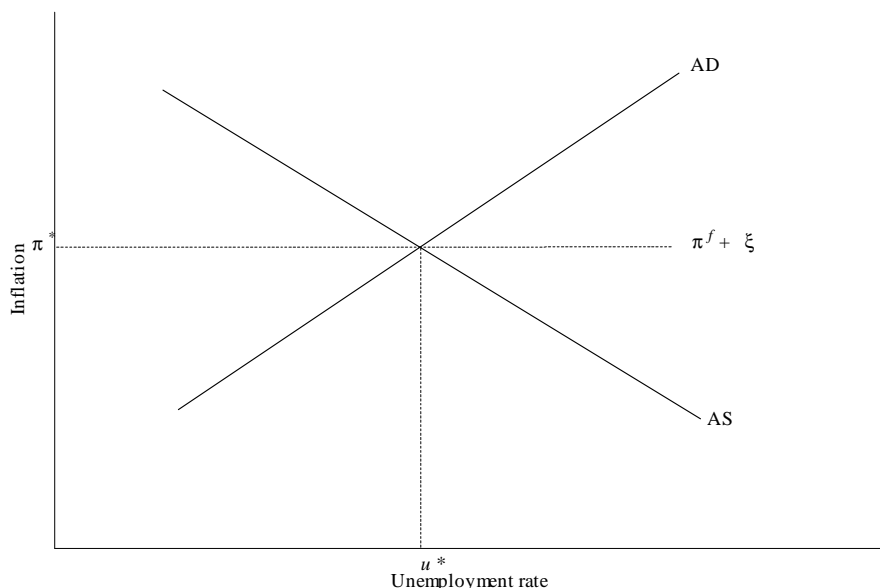


Figure 2: Equilibrium unemployment rate ( $u^*$ ) and inflation rate ( $\pi^*$ ) in a graphical representation of MOSES with the use of curves for aggregate demand (AD) and aggregate supply (AS).  $\pi^f$  denotes the rate of inflation abroad, and  $\xi$  denotes the rate of currency depreciation.

The downward sloping line in the figure, marked AS for aggregate supply, illustrates that firms' price setting, and firm and union wage bargaining, lead to a lower rate of inflation if the overall rate of unemployment is increased. The AS curve in the figure looks like a conventional short-run Phillips curve but the underlying economic theory is based on wage-bargaining and monopolistic price setting as explained in e.g. [Bårdsen and Nymoén \(2003\)](#). Because the modelling behind the AS curve in Figure 2 is central to MOSES' properties, section 3.1 gives a more detailed exposition of that part of the model. With reference to figure 2 we can already derive one important property, namely that in an equilibrium situation, with inflation equal to the inflation target, and with predetermined foreign inflation, both the rate of unemployment and the rate of currency depreciation are endogenously determined variables within MOSES.

### 3 Aspects in the design of MOSES

The theoretical framework defines many premises for a macroeconomic model. In the case of MOSES care has been taken to build on theories that, though necessarily abstract and simplified, have a high degree of relevance for the Swedish economy. In this section we therefore give two examples of such considerations when designing and building MOSES. We start with the theoretical background for price-wage process of the stylized model of Section 2.1.

#### 3.1 The wage-price spiral (the aggregate supply relationship)

The model of the wage-price spiral is of special relevance, since it delivers a set of premises for an inflation targeting central bank. The variables in the model we formulate are: wages per hour, denoted  $w$ , a price level variable for the producer price,  $q$ , the domestic consumer price index,  $p$ , import prices in domestic currency,  $pm$ , average labour productivity,  $pr$ , and the rate unemployment,  $u$ . All variables are in logarithmic scale.

### 3.1.1 Optimal price and wage levels

As is custom, we refer to the levels of the wage and price that firms and unions would decide if there were no costs or constraints on adjustment, as the optimal or target values of prices and wages. Another interpretation, following from the essentially static nature of these models, the optimal prices are those that would prevail in a hypothetical completely deterministic steady-state situation.

Specifically, we have the following two theoretical propositions of wage and price setting:

$$q^f = m_q + w - pr - \vartheta u, \quad (6)$$

with  $m_q > 0$  and  $\vartheta \leq 0$ , and

$$w^b = m_w + q + \omega(p - q) + \iota pr - \varpi u, \quad (7)$$

with  $m_w > 0$ ,  $0 \leq \omega \leq 1$ ,  $0 < \iota \leq 1$ ,  $\varpi \geq 0$ . The variable  $q^f$  in (6) refers to the theoretical price determined by monopolistic firms in a situation characterized by known and stable growth in the hourly wage, and in labour productivity. From the profit maximizing conditions it is implied that the mark-up coefficient  $m_q$  is positive, because firms choose a point on the elastic part of the demand curve (where the demand elasticity is larger than one in absolute value). We follow custom and approximate marginal labour costs with  $w - pr - \vartheta u$ , where  $pr$  is average labour productivity. With reference to Okun's law, we interpret the rate of unemployment as a replacement for capacity utilization. The case of  $\vartheta = 0$  is so often considered as the relevant case that it has earned its own name, namely *normal cost pricing*.

Turning to equation (7), the variable  $w^b$  denotes the theoretical concept of the “bargained wage” as the equation is derived from a theory of wage bargaining, see e.g., (Bårdsen et al., 2005, Ch. 5). The right hand side contains the variables that are expected to have the potential of systematic influence on the bargained wage. The producer price  $q$  and productivity  $pr$  are central variables in the model of wage formation. This is well established theoretically, see e.g., Nymoen and Rødseth (2003) and Forslund et al. (2008), and these variables are also found to be main empirical determinants of the secular growth in wages in bargaining based systems. Based on theory and the empirical evidence, we expect the elasticity  $\iota$  to be close to one. The elasticity of  $q$  has already been set to unity with reference to homogeneity of degree one with respect to nominal variables.

The impact of the rate of unemployment on the bargained wage is given by the elasticity  $-\varpi \leq 0$ . Blanchflower and Oswald (1994) provide evidence for the existence of an empirical law that the value of  $\varpi$  is 0.1, which is the slope coefficient of their *wage-curve*. Other authors instead emphasize that the slope of the wage-curve is likely to depend on the level of aggregation and on institutional factors. For example, one influential view holds that economies with a high level of coordination and centralization are expected to be characterized by a more sensitive responsiveness to unemployment (a higher  $\varpi$ ) than uncoordinated systems, that give little incentive to solidarity in wage bargaining, cf, (Layard et al., 2005, Ch. 8).

Finally, equation (7) is seen to include the variable  $(p - q)$ , called the wedge (between the producer and the consumer real wage). The elasticity of the wedge is denoted  $\omega$  in (7). Theoretically, the status of the wedge is less well micro founded than the other variables in (7). In fact, one main implication of the theory of collective bargaining (i.e., between labour union and profit maximizing firms) is that the consumer price,  $p$ , plays no role in determining the bargaining outcome. The crux of the argument is that wage bargaining is first and foremost about sharing of the valued-added created by capital and labour, all other considerations are of secondary importance in that theory, see Forslund et al. (2008). This implies  $\omega = 0$  in (7).

However, it is not clear that the bargaining model is equally relevant for understanding wage setting in all sectors of the economy. In the service sectors, where unions may have little bargaining power, wage setting may be dominated by so called efficiency wage considerations. Interestingly, efficiency wage theory has qualitatively the same implications as the bargaining model. Equation (7) is consistent with both theories, but the hypothesized magnitude of the coefficients are different: The efficiency wage model predicts a larger role for cost of living considerations, meaning that  $\omega > 0$  is characteristic of efficiency wage models, and a smaller effect of productivity, so  $\iota < 1$  may be seen as typical in the efficiency wage interpretation.

### 3.1.2 Identification and cointegration

We assume that both  $pr_t$  and  $pm_t$  are unit-root processes with positive and constant expected growth rates. This is a simple and relevant way of modelling the positive trends that dominate the actual time series of both productivity and import prices. Hence in a common notation  $pr_t \sim I(1)$  and  $pm_t \sim I(1)$ . For the rate of unemployment,  $u_t$ , we maintain stationarity throughout the paper (but with the understanding that deterministic regime shifts have been filtered out). We denote this  $u_t \sim I(0)$ .

We first use (7) to define the bargained *real* wage  $rw^b$  as

$$rw^b \equiv w^b - q = m_w + \omega(p - q) + \iota pr - \varpi u. \quad (8)$$

Similarly, (6) can be used to define the targeted *real* wage from the firms' point of view as:

$$rw^f \equiv w - q^f = -m_q + pr + \vartheta u. \quad (9)$$

The expressions for the two (conflicting) targeted real wages in (8) and (9) can be used to define the stochastic variables  $rw_t^b$  and  $rw_t^f$  by replacing  $q, p, pr$  and  $u$  by their observable counterparts  $q_t, p_t, pr_t$  and  $u_t$ , namely

$$rw_t^b = w_t^b - q_t = m_w + \omega(p_t - q_t) + \iota pr_t - \varpi u_t, \quad (10)$$

and

$$rw_t^f \equiv w_t - q_t^f = -m_q + pr_t - \vartheta u_t. \quad (11)$$

which shows that the wedge variable is proportional to the real-exchange rate defined as  $pm_t - q_t$ .

Next, defining the firms' real wage "gap",

$$\begin{aligned} ecm_t^f &= rw_t - rw_t^f = q_t^f - q_t \\ &= w_t - q_t - pr_t - \vartheta u_t + m_q, \end{aligned} \quad (12)$$

and the workers' real wage "gap",

$$\begin{aligned} ecm_t^b &= rw_t - rw_t^b = w_t - w_t^b \\ &= w_t - q_t - \omega(p_t - q_t) - \iota pr_t + \varpi u_t - m_w, \end{aligned} \quad (13)$$

give the solutions for wages and producer prices as

$$w_t = q_t + \omega(p_t - q_t) + \iota pr_t - \varpi u_t + m_w + ecm_t^b \quad (14)$$

$$q_t = w_t - pr_t - \vartheta u + m_q - ecm_t^f. \quad (15)$$

In MOSES we do not include  $q_t$  and  $p_t$  as separate variables. By making use of a stylized definition equation for the consumer price:

$$p_t = \phi q_t + (1 - \phi) pm_t. \quad (16)$$

(14) and (15) can be re-expressed in terms of  $w_t$  and  $p_t$  only:

$$w_t = m_w + \frac{1 - \omega(1 - \phi)}{\phi} p_t + \nu pr_t - \varpi u_t \quad (17)$$

$$- \frac{1 - \omega(1 - \phi)}{\phi} pm_t + ecm_t^b, \\ p_t = -\phi m_f + \phi(w_t - pr_t) + \phi\vartheta + (1 - \phi)pi_t - \phi ecm_t^f. \quad (18)$$

that implicitly implies non-linear cross-equation restrictions in terms of  $\phi$ .

By viewing (17) and (18) as two simultaneous equations, it is clear that the system is unidentified in general, (Bårdsen et al., 2005, Ch. 5.4). However, the high level of aggregation of MOSES makes it relevant to set  $\omega = 1$ . This restriction implies that the model does not distinguish between the aggregate product and consumer price in wage setting. Together with an assumption about normal cost pricing in the aggregated price relationship,  $\vartheta = 0$ , the restriction  $\omega = 1$  makes (17) and (18) identified with reference to the order condition. In this case, the two identified long-run equations can be re-written as:

$$w_t = m_w + p_t + \nu pr_t - \varpi u_t + ecm_t^b, \quad (19)$$

$$p_t = -\phi m_f + \phi(w_t - pr_t) + (1 - \phi)pm_t - \phi ecm_t^f. \quad (20)$$

If the economic theory is empirically relevant, both  $ecm_t^b$  and  $ecm_t^f$  are stationary  $I(0)$  variables. Hence, the assumptions stated above imply that (19) and (20) are two cointegrating relationships.

### 3.1.3 Equilibrium correction model of the wage-price spiral

Equilibrium correction dynamics are implied by cointegration, and we can therefore write down the following equilibrium correction model for wages and prices<sup>3</sup>:

$$\Delta w_t = c_w + \psi_{wp} \Delta p_t - \varphi u_{t-1} - \theta_w ecm_{t-1}^b + \varepsilon_{w,t},$$

$$\Delta p_t = c_p + \psi_{pw} \Delta w_t + \psi_{ppm} \Delta pm_t + \varsigma u_{t-1} + \theta_p \phi ecm_{t-1}^f + \varepsilon_{q,t}.$$

If we use the expressions for  $ecm_t^b$  and  $ecm_t^f$ , we obtain a dynamic system that can represent the supply-side of MOSES:

$$\Delta w_t = k_w + \psi_{wp} \Delta p_t - \theta_w (w_{t-1} - p_{t-1} - \nu pr_{t-1}) + (\theta_w \varpi + \varphi) u_{t-1} + \varepsilon_{w,t}, \quad (21)$$

$$\Delta p_t = k_w + \psi_{pw} \Delta w_t + \psi_{ppm} \Delta pm_t + \theta_p (w_{t-1} - p_{t-1} - pr_{t-1}) \\ + \theta_p (1 - \phi) (pm_{t-1} - p_{t-1}) + (\theta_q \vartheta + \varsigma) u_{t-1} + \varepsilon_{q,t}, \quad (22)$$

where all the derivative coefficients take non-negative values.

The coefficient  $\theta_w$  in (21) is a key parameter. In the case when the wage bargaining/efficiency wage model give a cointegrating relationship,  $\theta_w > 0$  is implied. The only logically consistent value of the parameter  $\varphi$  is then zero. Hence we use the following convention, see Kolsrud and Nymoer (1998):

$$\text{Wage bargaining model: } \theta_w > 0, \varpi > 0 \text{ and } \varphi = 0. \quad (23)$$

<sup>3</sup>For the coefficients  $\psi_{wq}$ ,  $\psi_{qw}$  and  $\psi_{wp}$ ,  $\psi_{qp}$ , the non-negative signs are standard in economic models. Negative values of  $\theta_w$  and  $\theta_q$  imply explosive evolution in wages and prices (hyperinflation), which is different from the low to moderately high inflation scenario that we have in mind for this paper.

We make a similar distinction for firms' price-setting, i.e., when the long-run price setting equation is a cointegration relationship, we have:

$$\text{Price mark-up model: } \theta_p > 0 \text{ and } \varsigma = 0 \quad (24)$$

Equations (50) and (49) in the Appendix show the estimated version of (21) and (22). Those results show that the estimated  $\theta_w$  and  $\theta_p$  are both statistically significant different from zero. This indicates a well controlled wage-price spiral in the current Swedish economy, which is a favourable premise for inflation targeting.

### 3.1.4 Phillips curve model of the wage-price spiral.

The default specification of the wage-price spiral in MOSES is the wage bargaining/price mark-up model given above. An alternative specification is defined by

$$\text{Wage Phillips curve model: } \theta_w = 0 \text{ and } \varphi > 0. \quad (25)$$

$$\text{Price Phillips curve model: } \theta_q = 0 \text{ and } \varsigma > 0, \quad (26)$$

This yields a price Phillips curve with an effect of  $u_{t-1}$  directly on  $\Delta p_t$  (since we now have  $\varsigma > 0$ ), and a wage Phillips curve, since  $\varphi > 0$  in this specification of the supply side. With suitable restrictions on the short-run dynamics of the two equations, a specification with a vertical long-run AS schedule results.

Although a Phillips-curve version of MOSES is easy to implement and it may be seen as more representative of standard macroeconomic models than the default version is, care must be taken to avoid misguided policy advice. For example, if  $\theta_w = 0$  and  $\theta_q = 0$  are imposed (despite the evidence), the model's properties may change fundamentally, as [Bårdsen and Nymoene \(2009b\)](#) show for a model of the US economy. In particular the speed of adjustment and the degree of stability of the wage-price spiral are affected, which may lead to advise of sharper interest rate response than would be optimal in the light of the empirically validated model version, see [Akram and Nymoene \(2009\)](#) for an analysis of optimal interest rate setting in a macroeconometric model for Norway.

## 3.2 Monetary and fiscal policy

As noted above MOSES, although it is an aggregate model, nevertheless represents a large number of relevant functional relationships in the Swedish macroeconomy. Two important policy instruments are also endogenized in MOSES: the short term interest rate (monetary policy) and government consumption (fiscal policy).

### 3.2.1 Monetary policy

The 'repo' interest rate  $RS$  is set according to a standard monetary response function for a small open economy, targeting underlying inflation  $\pi_{Rt}$  and output growth  $\dot{Y}_t$  in addition to following the foreign interest rate  $RSF$ .<sup>4</sup> Allowing for interest rate smoothing, this results in the general specification

$$RS_t = \alpha_1 R_{t-1} + \alpha_2 RSF_t + \alpha_3 RSF_{t-1} + \alpha_4 (\pi_{FRt} - \overline{\pi_{FRt}}) + \alpha_5 (\dot{Y}_t - \overline{\dot{Y}_t})$$

Note that this "Taylor rule" can trivially be rewritten in EqCM-form as:

$$\begin{aligned} \Delta RS_t = & -(1 - \alpha_1) \left[ R_{t-1} - \left( \frac{\alpha_2 + \alpha_3}{1 - \alpha_1} \right) RSF_{t-1} - \left( \frac{\alpha_4}{1 - \alpha_1} \right) (\pi_{FRt} - \overline{\pi_{FRt}}) - \left( \frac{\alpha_5}{1 - \alpha_1} \right) (\dot{Y}_t - \overline{\dot{Y}_t}) \right] \\ & + \alpha_2 \Delta RSF_t. \end{aligned}$$

---

<sup>4</sup>Underlying inflation is defined as  $\pi_{FRt} \equiv 100 \frac{\Delta PFR_t}{PFR_{t-4}}$ , where  $PFR_t$  is the consumer price index corrected for interest rate movements.

The corresponding estimated interest rate response function, reproduced from equation (60) in the appendix, is

$$\begin{aligned} \Delta RS_t = & - \frac{0.18}{(0.025)} \left[ RS_{t-1} - 0.9 RSF_{t-1} - 1.3 (\pi_{Rt} - 2) - 0.2 \dot{Y}_t \right] \\ & + \frac{0.74}{(0.074)} \Delta RSF_t + \frac{-0.04}{(0.028)} \end{aligned}$$

This equation obeys the Taylor principle, in the sense that, over a few periods of time, an autonomous increase in inflation of one percentage point leads to an increase in the ‘repo’ interest rate by more than one percentage point (the real interest rate thus increases). As is well known, many theoretical models require that the Taylor principle applies within the period of the shock, otherwise the inflation process will become de-stabilized. According to the properties of MOSES, this analysis does not carry over to the Swedish economy. Because of e.g., equilibrium correction in wage and price setting, changes in the interest rate setting may be relatively gradual without undermining nominal stability of the inflation target.

### 3.2.2 Fiscal policy

Turning to fiscal policy, we start from the premise that to make MOSES produce internally consistent conditional forecasts, fiscal policy should be endogenous, since otherwise an important feed-back mechanism of the Swedish economy is left unmodelled. To motivate the discussion of alternatives, we start by establishing a common framework based on the fiscal budget identity in nominal values:

$$G_t + T_t - \tau_t P_t Y_t = B_t - (1 + R_t) B_{t-1},$$

where  $G_t$  denotes nominal government consumption + nominal government investment,  $T_t$  denotes nominal social security transfers, and  $\tau_t$  symbolizes the unobserved policy tax rate, consisting of wage taxes, social contribution taxes and value added taxes. The stock of nominal government debt is denoted  $B_t$ , and  $R_t$  symbolizes the bond rate

Expressed in ratios of nominal GDP, the primary deficit  $-s_t = (g_t + t_t) - \tau_t$  is financed by debt changes:

$$-s_t = b_t - \frac{1 + r_t}{1 + \dot{Y}_t} b_{t-1}, \quad (27)$$

where using the price deflated  $P_t$ , the ratios are  $b_t = \frac{B_t}{P_t Y_t}$ ,  $t_t = \frac{T_t}{P_t Y_t}$ ,  $g_t = \frac{G_t}{P_t Y_t}$ , and using that  $\frac{(1+R_t)B_{t-1}}{P_t Y_t} = \frac{(1+R_t)B_{t-1}}{P_{t-1} Y_{t-1}} \frac{P_{t-1} Y_{t-1}}{P_t Y_t} = b_{t-1} \left( \frac{(1+R_t)P_{t-1} Y_{t-1}}{(1+\pi_t)(1+\dot{Y}_t)P_{t-1} Y_{t-1}} \right) = \frac{1+r_t}{1+\dot{Y}_t} b_{t-1}$ , where the real interest rate is defined as  $r_t = \frac{1+R_t}{1+\pi_t}$  with the inflation rate as  $\pi_t$  and the real GDP growth as  $\dot{Y}_t$ .

The debt remains constant—on its steady state level  $b_t = b_{t-1} = b^*$ —if the surplus equals

$$s_t = b^* \left( \frac{r_t - \dot{Y}_t}{1 + \dot{Y}_t} \right),$$

so if economic growth rates are higher than the real interest rates on debt, continuous deficits are consistent with debt stabilization. This is therefore the key issue to be answered by the model, both for forecasting and for economic policy analysis.

To produce precise and credible forecasts, the fiscal policy rule must fit the data as well as reflect the Swedish budgetary policy. For forecasting purposes, in particular the interplay between GDP and public expenditure will be of paramount importance, since it plays a large part for the development of GDP.

The fiscal rules implemented in Sweden consists of three parts:

1. A surplus target for general government
2. an expenditure ceiling for central government
3. a balanced budget requirement for municipalities and county councils.

The surplus target for general government was introduced in 2000 and is quantified as 1% over the business cycle. The expenditure ceiling was introduced in 1997 and is fixed 3 years in advance based on being in line with long term sustainable finances and falling slightly as a gdp-ratio. Due to the balanced budget requirements we do not consider municipalities and counties explicitly in the following, but focus on the targets of central- and general government.

Following [Claeys \(2008\)](#), a standard reaction function capturing these aspects is

$$s_t^* = s^* + \gamma (y_t^e - y_t^*) + \theta (b_t - b^*)$$

where  $s_t^*$  is the surplus target  $s^*$  its long term level, so  $s^* = 0.01$  in the present case, and  $(y_t^e - y_t^*)$  are expected deviations of output from the output target, which must be put into an operational form below, for example with factor analysis. Allowing for implementation lags then suggests a simple feedback rule, in stylized form:

$$s_t = \rho_s s_{t-1} + (1 - \rho) s_{t-1}^* + \varepsilon_t,$$

using either a linear or a log-linear specification. For later use, note that this implementation can be trivially rewritten in equilibrium correction form (EqC)

$$\Delta s_t = - (1 - \rho_s) (s_{t-1} - s_{t-1}^*) + \varepsilon_t. \quad (28)$$

An implementation of endogenous fiscal policy would then interact with the aggregate demand equation, again here in a highly stylized form:

$$\Delta \ln Y_t = \beta \Delta s_t - (\ln Y_{t-1} - \ln Y_{t-1}^*(s_{t-1})) \quad (29)$$

forming a (possibly simultaneous) vector EqC system.

One possibility is to split (28) into separate rules for the three components

$$g_t = \rho_g g_{t-1} + (1 - \rho_g) [g^* - \gamma_g (y_t^e - y_t^*)] + \varepsilon_t^g \quad (30)$$

$$t_t = \rho_t t_{t-1} + (1 - \rho_t) [t^* - \gamma_t (y_t^e - y_t^*)] + \varepsilon_t^t \quad (31)$$

$$\tau_t = \rho_\tau \tau_{t-1} + (1 - \rho_\tau) [\tau^* + v (b_{t-1} - b^*)] + \varepsilon_t^\tau \quad (32)$$

and to estimate the three rules as a system. In particular, note the endogeneity of  $Y$  in (28) through the ratio specification. The ratios in (28) must therefore be handled through identities as

$$g_t \equiv \frac{G_t}{P_t \times Y_t(s_t)} \text{ and } t_t \equiv \frac{T_t}{P_t \times Y_t(s_t)}. \quad (33)$$

A less ambitious, but possibly more robust, alternative followed here is to focus on a generalized version of (30), but in logs of levels, and in constant prices:

$$\delta_G(L) \ln \Delta G_t = - (1 - \rho_G) (\ln G_{t-1} - \ln G_{t-1}^*) + \delta_y(L) \Delta Y_t \quad (34)$$

where  $G_t^* = G^* \times \frac{G}{Y^\delta}$ ,  $0 < \delta < 1$ . Such a specification is in line with the budget ceiling requirement of a falling  $\frac{G}{Y}$  ratio as described as part of the official fiscal policy. We have done a full simultaneous system specification search of (29) and (34), resulting in the specification for (34) reported in (57) in the Appendix, and reproduced here:

$$\Delta g_t = - \underset{(0.06)}{0.35} (g_{t-4} - 0.25y_{t-5}) - \underset{(0.057)}{0.17} \Delta_2 g_{t-1} - \underset{(0.07)}{0.21} \Delta y_{t-4} + \underset{(0.53)}{3.1}$$

with fiscal policy responding to GDP with a lag.

## 4 Methodology

This section briefly sets out the general methodology used in deriving a dynamic simultaneous econometric model (SEM) as MOSES, drawing upon [Bårdsen et al. \(2004\)](#) and [Bårdsen and Nymoen \(2009a\)](#). To jump ahead: the conclusion to this section is that any system with a stable steady state can be given a linearized, discretized Equilibrium Correction (EqC) representation.

Consider the two-dimensional system of differential equations

$$\frac{dy}{dt} = f(y, x), \quad x = x(t), \quad (35)$$

for which  $y_1 \rightarrow \bar{y}_1$  and  $y_2 \rightarrow \bar{y}_2$  as  $t \rightarrow \infty$ . A linearized backward-difference approximation to the solution of the system of differential equations then gives the system in EqCM form<sup>5</sup>, namely,

$$\begin{aligned} \begin{bmatrix} \Delta y_1 \\ \Delta y_2 \end{bmatrix}_t &= \begin{bmatrix} -\alpha_{11}c_1 \\ -\alpha_{22}c_2 \end{bmatrix} + \begin{bmatrix} \alpha_{11} & 0 \\ 0 & \alpha_{22} \end{bmatrix} \begin{bmatrix} y_1 - \delta_1 y_2 \\ y_2 - \delta_2 y_1 \end{bmatrix}_{t-1} + \begin{bmatrix} R_1 \\ R_2 \end{bmatrix}_{t-1} \\ &+ \frac{1}{2} \begin{bmatrix} \alpha_{11} & \alpha_{12} \\ \alpha_{21} & \alpha_{22} \end{bmatrix} \begin{bmatrix} \Delta y_1 \\ \Delta y_2 \end{bmatrix}_{t-1} + \begin{bmatrix} \Delta R_1 \\ \Delta R_2 \end{bmatrix}_{t-1} \\ &+ \frac{5}{12} \begin{bmatrix} \alpha_{11} & \alpha_{12} \\ \alpha_{21} & \alpha_{22} \end{bmatrix} \begin{bmatrix} \Delta^2 y_1 \\ \Delta^2 y_2 \end{bmatrix}_{t-1} + \begin{bmatrix} \Delta^2 R_1 \\ \Delta^2 R_2 \end{bmatrix}_{t-1} \\ &+ \frac{3}{8} \begin{bmatrix} \alpha_{11} & \alpha_{12} \\ \alpha_{21} & \alpha_{22} \end{bmatrix} \begin{bmatrix} \Delta^3 y_1 \\ \Delta^3 y_2 \end{bmatrix}_{t-1} + \begin{bmatrix} \Delta^3 R_1 \\ \Delta^3 R_2 \end{bmatrix}_{t-1} + \dots \end{aligned}$$

with

$$\begin{aligned} c_1 &= (\bar{y}_1 + \delta_1 \bar{y}_2), & \delta_1 &= \frac{\alpha_{12}}{\alpha_{11}} \\ c_2 &= (\bar{y}_2 + \delta_2 \bar{y}_1), & \delta_2 &= \frac{\alpha_{21}}{\alpha_{22}} \end{aligned}$$

and  $R_i$  is the Lagrange form of the remainders in the Taylor approximation.

At this point two comments are in place. The first is that an econometric specification will mean a truncation of the polynomial both in terms of powers and lags. Diagnostic testing is therefore imperative to ensure a valid local approximation, and indeed to test that the statistical model is valid, see [Hendry \(1995\)](#) and [Spanos \(2008\)](#). As an example, consider a linear underlying model, so  $R_i = 0$ , and assume that higher order dynamics can be ignored. The model then simplifies to

$$\begin{bmatrix} \Delta y_1 \\ \Delta y_2 \end{bmatrix}_t = \begin{bmatrix} -\alpha_{11}c_1 \\ -\alpha_{22}c_2 \end{bmatrix} + \begin{bmatrix} \alpha_{11} & 0 \\ 0 & \alpha_{22} \end{bmatrix} \begin{bmatrix} y_1 - \delta_1 y_2 \\ y_2 - \delta_2 y_1 \end{bmatrix}_{t-1}.$$

The second point is that the framework allows for flexibility regarding the form of the steady state. The standard approach in DSGE-modelling has been to filter the data, typically using the so-called Hodrick-Prescott filter, to remove trends, hopefully achieving stationary series with constant means, and then work with the filtered series. Another approach, popular at present, is to impose the theoretical balanced growth path of the model on the data, expressing all series in terms of growth corrected values. However, an alternative approach is to estimate the balanced growth paths in terms of finding the number of common trends and identifying and estimating cointegrating relationships. The present approach allows for all of these interpretations.

<sup>5</sup>See [Bårdsen et al. \(2004\)](#) for details.



To illustrate the approach in terms of cointegration, consider real wages to be influenced by productivity, as in many theories and also in the model of section 2.1. To be specific, consider the price-wage model of section 3.1 again. Assume that the logs of the real wage  $rw_t = (w - p)_t$  and productivity  $pr_t$  are each integrated of order one, but found to be cointegrated, so

$$rw_t \sim I(1), \Delta rw_t \sim I(0) \quad (36)$$

$$pr_t \sim I(1), \Delta pr_t \sim I(0) \quad (37)$$

$$(rw - \beta pr)_t \sim I(0). \quad (38)$$

Letting  $y_{1t} \equiv (rw - \beta pr)_t$  and  $y_{2t} \equiv \Delta pr_t$  then gives

$$\begin{bmatrix} \Delta(rw - \beta pr) \\ \Delta^2 pr \end{bmatrix}_t = \begin{bmatrix} -\alpha_{11}c_1 \\ -\alpha_{22}c_2 \end{bmatrix} + \begin{bmatrix} \alpha_{11} & 0 \\ 0 & \alpha_{22} \end{bmatrix} \begin{bmatrix} (rw - \beta pr) - \delta_1 \Delta pr \\ \Delta pr - \delta_2 (rw - \beta pr) \end{bmatrix}_{t-1}$$

or multiplied out:

$$\begin{aligned} \Delta rw_t &= -\alpha_{11}c_1 + \alpha_{11}(rw - \beta pr)_{t-1} + \beta \Delta pr_t - \alpha_{12} \Delta pr_{t-1} \\ \Delta pr_t &= -\alpha_{22} \left( \overline{pr} + \frac{\alpha_{21}}{\alpha_{22}} \overline{rw} \right) + (\alpha_{22} - 1) \Delta pr_{t-1} - \alpha_{21}(rw - \beta pr)_{t-1} \end{aligned}$$

So if  $\alpha_{21} = 0$  and  $|\alpha_{22} - 1| < 1$  the system simplifies to the familiar exposition of a bivariate cointegrated system with  $pr$  being weakly exogenous for  $\beta$ , giving rise to a richer version of the price-wage model of Section 2.1:

$$\begin{aligned} \Delta rw_t &= -\alpha_{11}c_1 + \alpha_{11}(rw - \beta pr)_{t-1} + \beta \Delta pr_t - \alpha_{12} \Delta pr_{t-1} \\ \Delta pr_t &= -\alpha_{22} \overline{pr} + (\alpha_{22} - 1) \Delta pr_{t-1}, \end{aligned}$$

with the common stochastic trend coming from productivity and the wage-share being stationary.

#### 4.1 From a discretized and linearized cointegrated VAR representation to a dynamic SEM in three steps

We now set out the steps used in deriving a model from a statistical system. We will keep this section brief, as comprehensive treatments can be found in many places—for example in [Hendry \(1995\)](#), [Johansen \(1995, 2006\)](#), [Juselius \(2007\)](#), [Garratt et al. \(2006\)](#), and [Ltkepohl \(2006\)](#)

##### 4.1.1 First step: the statistical system

Our starting point for identifying and building a macroeconomic model is to find a linearized and discretized approximation as a data-coherent statistical system representation in the form of a cointegrated VAR

$$\Delta \mathbf{y}_t = \mathbf{c} + \Pi \mathbf{y}_{t-1} + \sum_{i=1}^k \Gamma_i \Delta \mathbf{y}_{t-i} + \mathbf{u}_t, \quad (39)$$

with independent Gaussian errors  $\mathbf{u}_t$  as a basis for valid statistical inference about economic theoretical hypotheses.

The purpose of the statistical model (39) is to provide the framework for hypothesis testing, the inferential aspect of macroeconomic modelling. However, it cannot be postulated directly, since the cointegrated VAR itself rests on assumptions. Hence, validation

of the statistical system is an essential step: Is a model which is linear in the parameters flexible enough to describe the fluctuations of the data? What about the assumed constancy of parameters, does it hold over the sample that we have at hand? And the Gaussian distribution of the errors, is that a tenable assumption so that (39) can supply the inferential aspect of modelling with sufficient statistics. The main intellectual rationale for the model validation aspect of macroeconometrics is exactly that the assumptions of the statistical system requires separate attention.

As pointed out by Garratt et al. (2006), the representation (39) does not preclude forward-looking behaviour in the underlying model, as rational expectations models have backward-looking solutions.

Even with a model which for many practical purpose is small scale it is usually too big to be formulated in “one go” within a cointegrated VAR framework. Hence, model (39) for example is not interpretable as one rather high dimensional VAR, with the (incredible) long lags which would be needed to capture the complicated dynamic interlinkages of a real economy. Instead, as explained in Bårdsen et al. (2003), our operational procedure is to partition the (big) simultaneous distribution function of markets and variables: prices, wages, output, interest rates, the exchange rate, foreign prices, and unemployment, etc. into a (much smaller) simultaneous model of wage and price setting—the labour market—and several sub-models of the rest of the macro economy. The econometric rationale for specification and estimation of single equations, or of markets, subject to exogeneity conditions, before joining them up in a complete model is discussed in Bårdsen et al. (2003), and also in (Bårdsen et al., 2005, Ch. 2).

#### 4.1.2 Second step: the overidentified steady state

The second step of the model building exercise will then be to identify the steady state, by testing and imposing overidentifying restrictions on the cointegration space:

$$\Delta \mathbf{y}_t = \mathbf{c} + \alpha \beta' \mathbf{y}_{t-1} + \sum_{i=1}^k \Gamma_i \Delta \mathbf{y}_{t-i} + \mathbf{u}_t,$$

thereby identifying both the exogenous common trends, or permanent shocks, and the steady state of the model.

Even though there now exists a literature on identification of cointegration vectors, it is worthwhile to reiterate that identification of cointegrating vectors cannot be data-based. Identifying restrictions have to be imposed *a priori*. It is therefore of crucial importance to have a specification of the economic model and its derived steady state before estimation. Otherwise we will not know what model and hypotheses we are testing and, in particular, we could not be certain that it was identifiable from the available data set

#### 4.1.3 Third step: the dynamic SEM

The final step is to identify the dynamic structure:

$$\mathbf{A}_0 \Delta \mathbf{y}_t = \mathbf{A}_0 \mathbf{c} + \mathbf{A}_0 \alpha \beta' \mathbf{y}_{t-1} + \sum_{i=1}^k \mathbf{A}_0 \Gamma_i \Delta \mathbf{y}_{t-i} + \mathbf{A}_0 \mathbf{u}_t,$$

by testing and imposing overidentifying restrictions on the dynamic part—including in principle the forward-looking part—of the statistical system. In the default version of the model we have kept the dynamics deliberately simple, so that the resulting system of difference equation has a causal structure which is practical in use.

## 4.2 Automatic model selection

General to specific (Gets) modelling strategies has been advocated and debated over several decades. One advantage of Gets compared to specific to general modelling is that it lets itself to computer automatization. Good algorithms for Gets modelling have been shown to be able to retrieve a true model with great regularity, if it is situated within the general statistical model that marks the starting point of the selection model, see [Hoover and Perez \(1999\)](#) and [Hendry and Krolzig \(1999\)](#).

Following [Doornik \(2009\)](#), the essential steps in an automatized Gets procedure can be summarized as follows:

1. Start from general statistical system (GUM) based (at least) on previous findings and available theory.
2. Check GUM captures essential characteristics of data: ensures valid inferences.
3. Eliminate insignificant variables to reduce complexity:
  - (a) diagnostic checks on validity of reductions
  - (b) ensures congruence of final model.
4. Use tree search to avoid path-dependence.
5. Use backtesting to restrict information loss to user-determined level.

In the following we refer to this as Autometrics, which has been an essential ingredient in building MOSES. From a practical perspective, we note in particular that when modelling seasonally adjusted data, changes in the method of seasonal adjustment (decided “from outside”) can affect all data series over the whole sample. To adapt the model structure to the new measurement system is time consuming with manual modelling. Autometrics makes remodelling practically feasible even with frequent data revisions due to seasonally adjusted data.

Despite the automatization in model specification, good judgement and economic theory remain essential when doing Gets modelling with a computer programme. For example, the larger the GUM is, the larger the probability of retaining some effects by chance. On the other hand a too small GUM can entail omission of key variables from the outset.

This means that prior analysis using theory and institutional and historical knowledge are essential for choice of relevant variables, functional form, indicators etc. in the GUM. If available, previous evidence needs to be addressed to ensure encompassing, and finally there remains also a central role for theory in ‘prior simplification’.

Autometrics is available for systems, but when building a realistic model, the dimensions are too big for one system. We will therefore typically model blocks (not necessarily single equations though) of the complete model and then put them together at the end. Blockwise modelling is easy to criticize, but difficult to beat in practice. One explanation is that even though there are many interactions between the different markets and decision processes that go into a macro model, a relevant model representation of each market can be established without taking all these interactions into account, in fact it is often a necessity. Trying to model everything in “one go” on the other hand may lead to a less relevant model structure.

## 5 Dynamic properties of MOSES

This section looks at some dynamic properties of MOSES evaluated by dynamic simulations.

## 5.1 Adjustment speed and steady-state

As noted above, the steady-state properties of a dynamic model are of relevance also if the operational use of the model will be for short-run forecasting and analysis. This is because departures from steady-state equilibria have an influence on the dynamic solution over the relevant short time horizon. From a practical perspective it is also interesting whether the adjustment speeds of the model solution, towards the steady-state, is slow or relatively fast. Very slow adjustment speed means that the steady-state equilibrium has little influence on the dynamic solution for the model's endogenous variable, while relatively fast adjustment speed suggests the opposite. Since an econometric model combines *a priori* theoretical information with data based modelling, and since a good part of the *a priori* information is contained in the model's steady-state relationships, the overall speed of adjustment of a model is a qualitative sign about the value added of an econometric model compared to a pure multivariate statistical forecasting model for example.

We can illustrate these points by looking at the solution of the linear model

$$y_t = \beta_0 + \beta_1 x_t + \beta_2 x_{t-1} + \alpha y_{t-1} + \varepsilon_t \quad (40)$$

for a single endogenous variable  $y_t$ , and  $x_t$  is exogenous.  $\varepsilon_t$  is a random shock term with mathematical expectation zero.

As always, a particular solution of a dynamic model, is based on explicit assumptions about the unmodelled terms. Since the issue here is adjustment speed, we set  $x_t$  and  $\varepsilon_t$  equal to their long-run means  $m_x$  and 0. With  $y_0$  denoting the initial condition the solution becomes

$$y_t = (\beta_0 + Bm_x) \sum_{s=0}^{t-1} \alpha^s + \alpha^t y_0, \quad t = 1, 2, \dots \quad (41)$$

The condition

$$-1 < \alpha < 1 \quad (42)$$

is the necessary and sufficient condition for the existence of a globally asymptotically *stable* solution. The stable solution has the characteristic that asymptotically there is no trace left of the initial condition  $y_0$ . From (41) we see that as the distance in time between  $y_t$  and the initial condition increases,  $y_0$  has less and less influence on the solution. When  $t$  becomes large (approaches infinity), the influence of the initial condition becomes negligible. Since  $\sum_{s=0}^{t-1} \alpha^s \rightarrow \frac{1}{1-\alpha}$  as  $t \rightarrow \infty$ , we have asymptotically:

$$y^* = \frac{(\beta_0 + Bm_x)}{1 - \alpha} \quad (43)$$

where  $y^*$  denotes the steady-state equilibrium of  $y_t$ . As stated,  $y^*$  is independent of  $y_0$ . Using this result in (41), and next adding and subtracting  $(\beta_0 + Bm_x)\alpha^t/(1 - \alpha)$  on the right hand side of (41), we obtain

$$\begin{aligned} y_t &= \frac{(\beta_0 + Bm_x)}{1 - \alpha} + \alpha^t \left( y_0 - \frac{\beta_0 + Bm_x}{1 - \alpha} \right) \\ &= y^* + \alpha^t (y_0 - y^*), \quad \text{when } -1 < \alpha < 1. \end{aligned} \quad (44)$$

In the stable case, the dynamic process is essentially correcting the initial discrepancy (disequilibrium) between the  $y_0$  and steady-state  $y^*$ . Slow adjustment speed means that  $\alpha$  is e.g. close to 1, and then most of the solution (e.g. the forecasted values) will be conditioned by the history of  $y$ , i.e.  $y_0$  in this case.

$\alpha = 1$  in (40) is a special case of considerable interest since it corresponds to non-cointegration in the relevant case where  $x_t$  is first difference stationary time series variable.

In this non stationary case, the long-run relationship for  $y^*$  in (43) has no foundation in the dynamic model, the logical consequence is to replace (40) by

$$\Delta y_t = \beta_0 + \beta_1 \Delta x_t + \varepsilon_t \quad (45)$$

for forecasting purposes. Clearly, the initial value  $y_0$  will now have full influence on the forecast for the level  $y_{t+j}$ , no matter how long the forecasting horizon is. Theoretical information on the other hand, has no influence.

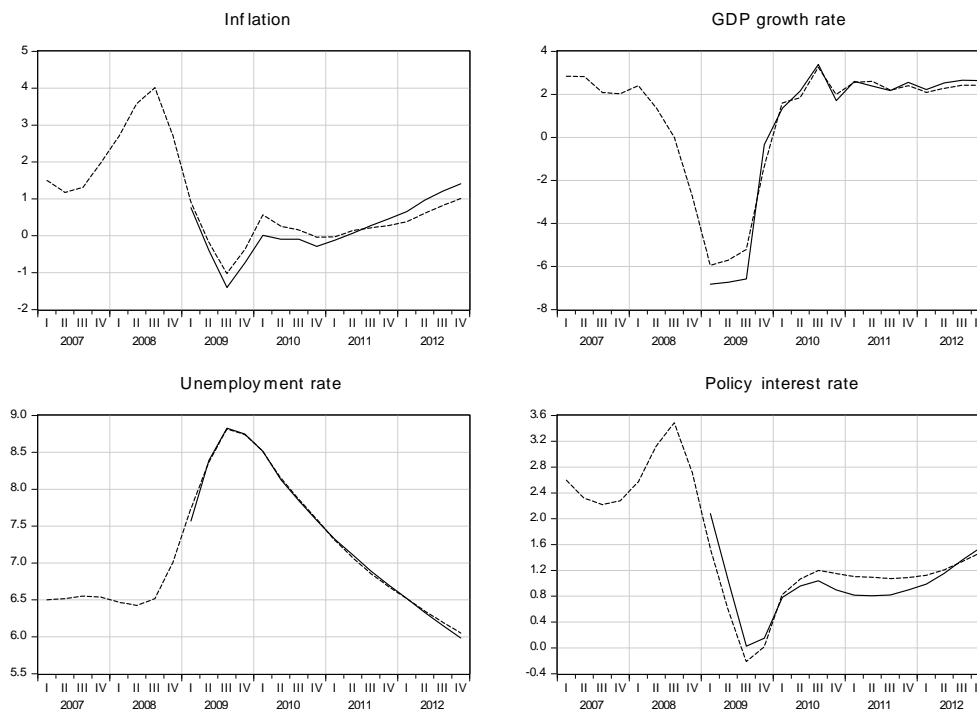


Figure 3: Assessing the importance of starting values for convergence by starting the simulations in 2007(1) and 2009(1) for inflation, output growth, unemployment rate, and the policy interest rate.

Formal analysis of the stability properties of a larger macroeconomic model can be done, with the aid of the calculated roots of the final equations of the model. These roots are the counterparts to  $\alpha$  in the simple case above. However, such formal analysis goes beyond the scope of this documentation, and also well beyond what is needed to gain insight into the qualitative stability properties of MOSES. Graphs of dynamic simulations over a time horizon may be used to gain an impression of the speed of adjustments that shape the solution of the endogenous variables of the model. The horizon may be longer than the intended use of the model, but still short-enough to be of some practical interest.

Figure 3 shows dynamic simulations for four macroeconomic variables which are endogenous in MOSES. There are two simulations in each graph. One starts in 2007(1), the solid line, and the other starts in 2009(1). Because of the financial crisis in particular, one could expect the differences between these starting values to be quite large. This is not the case at all. The two solutions for inflation, the GDP growth rate, the unemployment rate, and the policy interest rate all converge relatively fast to about the same values in 2012q4. This is suggestive of stable steady-states, and quite high speed of adjustment. The solution for unemployment in particular is implying that the rate of unemployment in 2009 is above the steady-state equilibrium level (corresponding to  $u^*$  in Figure 2).

## 5.2 In-sample dynamic simulations

Figure 4 documents the dynamic simulation properties of MOSES for inflation, output growth, unemployment rate, and the policy interest rate. Considering that the only exogenous variables are energy prices and unemployment programmes, the in-sample dynamic simulation performance is quite impressive. However, note that the simulations are conditional upon the 18 impulse dummies which represent outliers and possible structural breaks occurring over the period 1997-2009. This clearly help keep the simulations “on track”, so a similar performance cannot be expected for real time forecasts made before breaks have occurred.

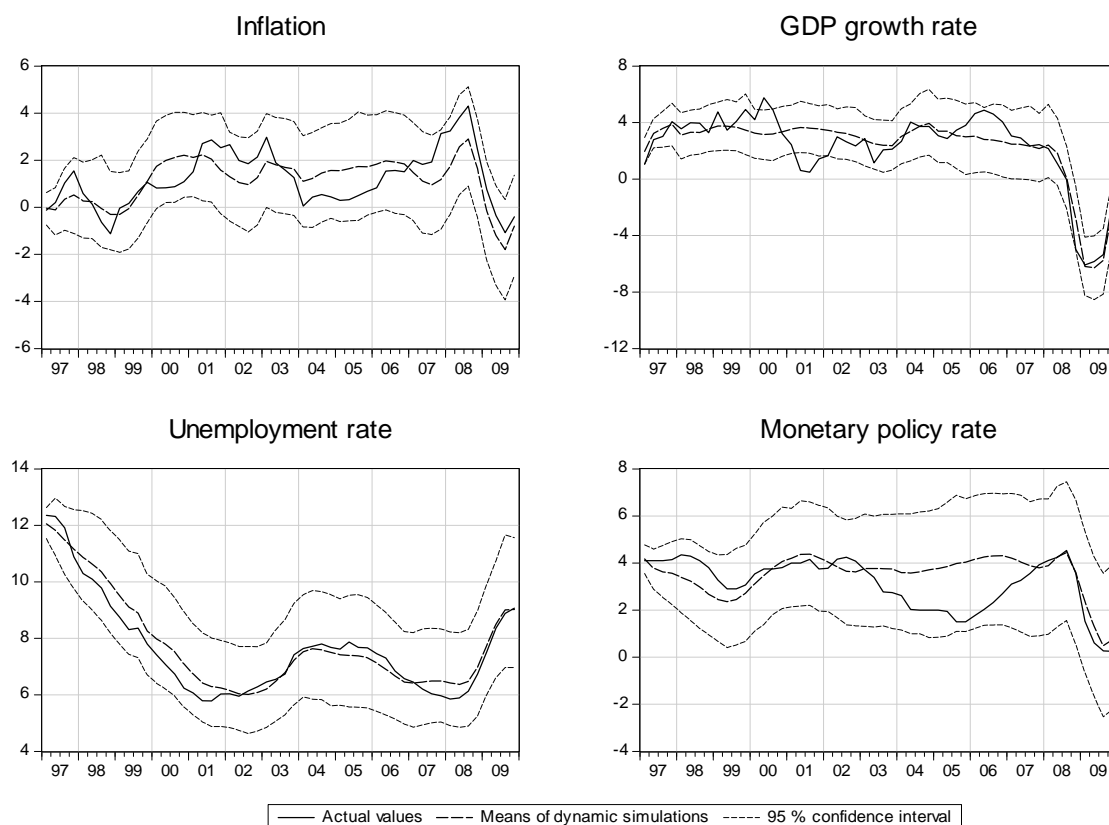


Figure 4: Dynamic simulations from 1997(1) until 2009(4) of annual inflation, the annual GDP growth rate, the unemployment rate, and the policy interest rate. The dotted bands are the 95% confidence intervals.

## 5.3 Effects of monetary policy

Figure 5 illustrates the effects of a negative monetary policy shock. A one period negative impulse of 100 basis points to the policy rate will on average increase inflation by a fifth of a percentage point at the maximum 6 quarters later, while the expected maximum response in output is 0.5 percentage points. The unemployment rate will respond much less and after a year the effect is not significant.

The gradual increase in inflation after monetary policy shock seen here is often associated with backward-looking models. It should be noted therefore that also forward-looking models—with lead terms—will give the same qualitative response as long as the model has a solution which is stable from given initial conditions—excluding solutions with jumps in the inflation rate. Hence, it is the nature of the solution which is important, not whether

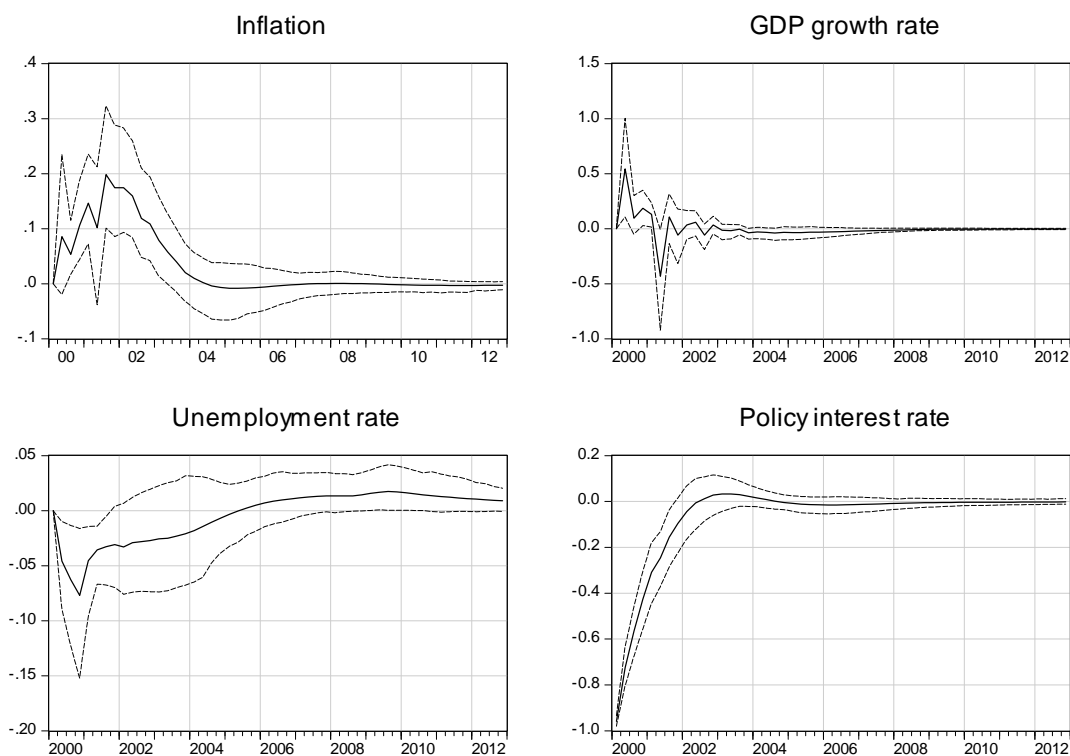


Figure 5: The effects of 100 basis points reduction in the interest rate (lower right) on inflation, output growth and unemployment rate.

equations of the model has a forward-looking terms or not. The speed of adjustment with respect to this monetary policy shock seems to be relatively fast in the model. For example, the graph shows that the interest rate returns to its initial level in the course of 8 periods.

## 6 MOSES forecasts

In this section we report forecasts for the Swedish economy from MOSES. The only "technical" premise is that the model has been estimated on a relevant sample, in this case the sample that ends in 2009(4), with the results reported in Appendix A. In a practical forecasting situation late in 2009, one particular concern would have been how to tackle non-modelled effects of the global financial and credit crisis. As the estimation results in Appendix A shows, there are relatively few discernable effects of the crisis in the model. Note also, that in this example of forecasting with MOSES, there are no add-factors in use.

Having fixed the initial conditions to 2009(4), the solution of the model, and hence the forecast, since the model has a simple causal solution, only depends on the assumptions about the model's exogenous variables. As explained above there are four such variables: The degree of accommodation in labour market programmes ( $AMUN$ ), the replacement rate in the unemployment insurance ( $RPR$ ), energy prices in the consumer price index ( $PE$ ), and the raw-oil price ( $SPOIL$ ).

Figure 6 shows graphs of these four variables over the period 2007(1)-2013(2). For labour market programmes ( $AMUN$ ) and the replacement rate ( $RPR$ ) the levels in 2009q2 are simply extrapolated in the forecast period. For energy prices we assume moderate and even growth compared to what the recent history shows, and the oil price has a small

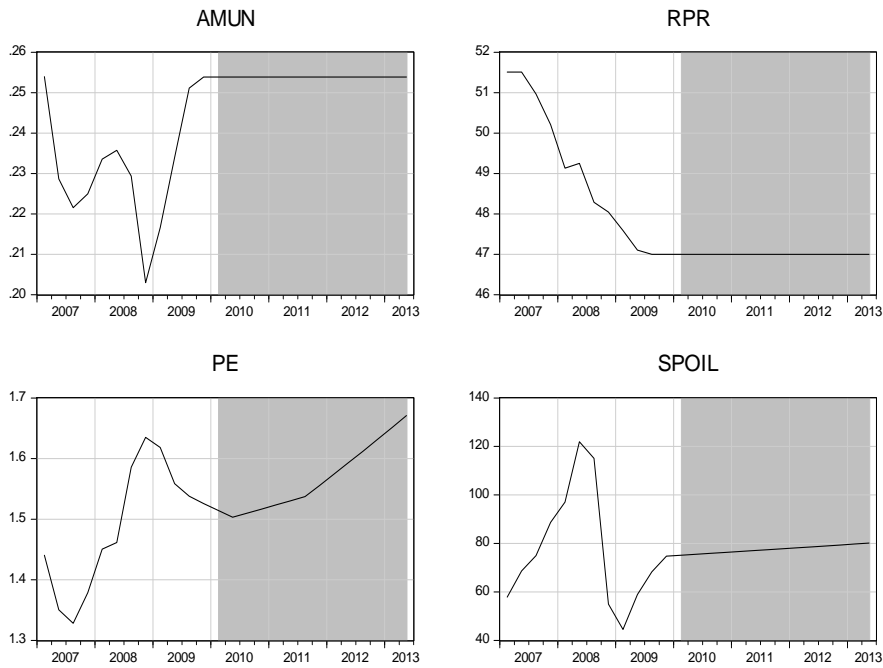


Figure 6: Paths for the exogenous variables in the forecasts: *AMUN* is the labour market accommodation rate, *RPR* is the replacement rate, *PE* is the percentage change in the energy component in the consumer price index, *SPOIL* is the price of oil per barrel in USD.

positive growth rate. These assumptions are mainly illustrations and not optimal choices for model input.

Based on the above, the dynamic simulation of MOSES gives forecasts as showed in Figures 7-9. As noted above, the 95 % prediction intervals are constructed by Monte Carlo simulation of the model. Figure 7 shows that domestic inflation is increasing again in the first period of the forecast period: We report two inflation measures, one for the 'core inflation' rate defined as the annual growth in the consumer price index net of interest rate payments (variable *pfr* in the model), and the other is the change in headline CPI (*p*). We see that the forecasted rates may overshoot the target in this forecast. The rate of wage growth also picks up again in this simulation, and stabilizes at a constant level a little above 3 %. The second row of graphs shows the rate of nominal currency depreciation to the left, and then import price growth and foreign consumer price inflation. The graph for depreciation is perhaps the most interesting since it shows that the initial depreciation is followed by appreciation, before the value of the SEK is stabilized again.

Figure 8 shows the forecasted evolution of Sweden on it's way out of the financial crisis, represented by six important real variables. GDP growth is positive already in 2010(1), and settles quickly around a growth rate of 2.5 %. The graph of the unemployment reinforces the positive development of the macro economy, with a steady fall towards an equilibrium level below 5 %.<sup>6</sup> The graph to the right in the first row of 8 shows the productivity growth associated with this development, which is marked by a positive growth rate, settling around 2%.

In the left panel of the second row of Figure 8 the real exchange rate is appreciating towards an equilibrium with stronger terms of trade after 2010. As noted above, stability

<sup>6</sup>Note that an equilibrium level of unemployment is an endogenous property of the full model, rather than an imposed value.



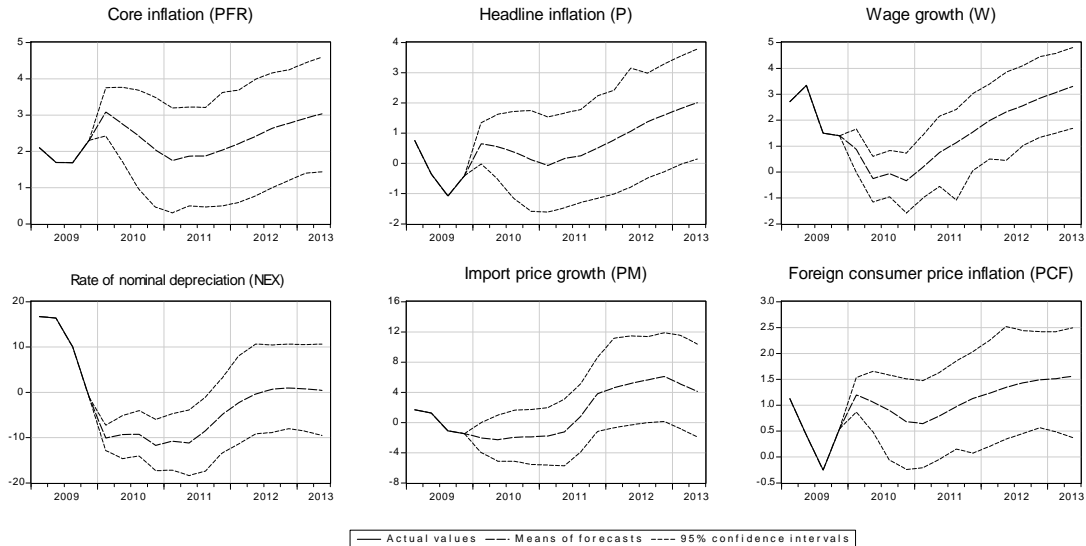


Figure 7: Forecast results for nominal variables for 2010(1)-2013(2).

of this variable is key to overall stability of the nominal path defined by MOSES. The forecast path is consistent with the nominal development shown in Figure 7 above, in particular that inflation is stabilizing at the targeted 2 % at a near constant nominal exchange rate as well. The graph in the middle shows the wage-share, which is also a very important variable to check for stability. The speed of adjustment is a good deal slower for this variable, but that is not unreasonable, given the complexity of the model. The last graph in this figure shows public expenditure as a share of GDP. As noted above, the level of public expenditure is an endogenous variable in MOSES. In accordance with the positive forecasts of GDP and the modelling of fiscal policy, the increase in relative public expenditure is reduced markedly through 2010, towards it's long-run level of a quarter of GDP.

Figure 9 shows forecasts for short and long interest rates. The most important variable here is the short interest rate (which is the Riksbank's policy rate). The prediction interval includes negative repo rates, which seems odd at first sight, but remember that this is a mechanical model forecast in a special situation with the rate at 0.25 % initially.<sup>7</sup> Although both the repo rate and the bank loan rate are increasing, the interpretation from a real loan rate falling towards 2% is one of a successful monetary policy. The second row of the graph shows forecasts for the yield on 10 year domestic government bonds, and for short and long foreign interest rates. Note that the long-run properties of all the rates are estimated as a property of the monetary policy assumptions of inflation targeting in the model.

## 7 Forecast evaluations

The forecast exercise of the previous section is replicated in a systematic way and the forecast performance is analyzed. Forecasts are generated over the period 2000(1) - 2009(4) for a forecast horizon of  $h = 1, \dots, 14$  periods ahead. So, the exercise implies 40 one-step ahead forecasts, 39 two-step ahead forecasts, etc. The maximum forecast horizon of  $h = 14$  reflects the medium term that is relevant in a practical policy context. We analyze the

<sup>7</sup>The monetary policy reports have presented forecasts for the policy rate with prediction intervals that cover negative rates

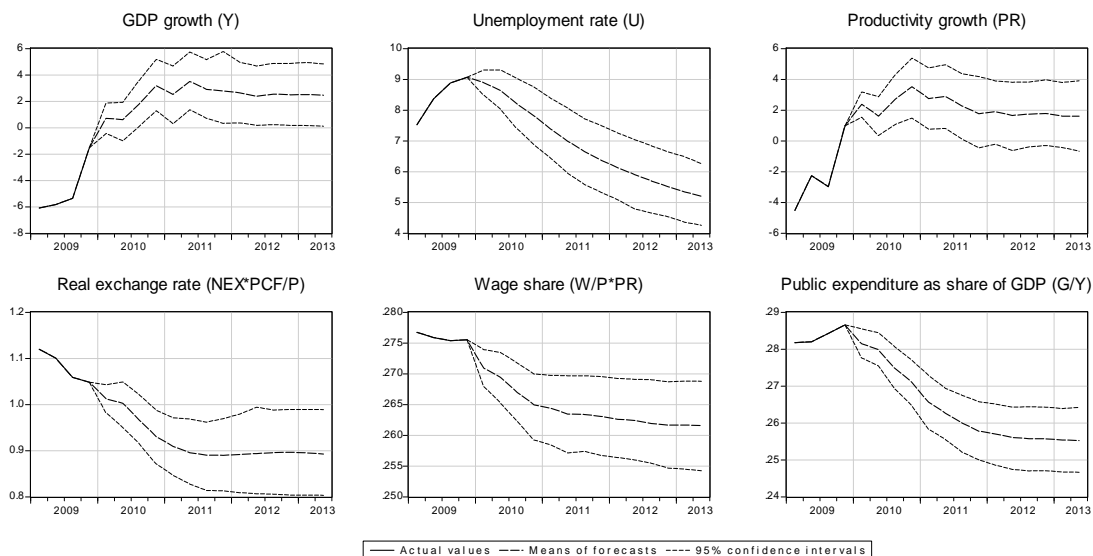


Figure 8: Forecasts of some of the real variables in MOSES.

forecast performance of a number of key variables  $x = \{y, pfr, ph, nex, rs\}$  being GDP ( $y$ , in logs), consumer price index ( $pfr$ , in logs), house price index ( $ph$ , in logs), the nominal effective exchange rate index ( $nex$ ) and the three month money market interest rate ( $rs$ ), see the appendix for data definitions.

The MOSES forecasts depend on the future paths of the exogenous variables as the world oil price ( $spoil$ ), electricity price ( $pe$ ), labour market programs ( $amun$ ) and the replacement rate ( $rpr$ ), see the flow chart in diagram 1. The endogenous model forecasts are based on the exogenous variables, which are assumed to remain constant over the forecast horizon equal to their latest realisation. The conditional forecasts are based on the future realisations of the exogenous variables and, in addition, to the future realisations of the non-modelled foreign variables for GDP ( $yf$ ), the consumer price index ( $pf$ ) and the three month foreign money market interest rate ( $rsf$ ). Exogenising these three foreign variables is part of the policy process in which MOSES is employed. The values for the 7 exogenous variables imply perfect foresight as they are set equal to their realisations over the entire forecast horizon.

The forecast exercise is quasi and pseudo real-time. The exercise is quasi real-time in the sense that we abstract from data revisions and only consider the 2009(4) vintage, even though the revisions of Swedish National Account data are non-negligible. The exercise is pseudo real-time in the sense that the same sample period is used for both model selection and forecast evaluation. So, the selected model and the estimated parameters as represented in the Appendix are employed to generate the forecasts over the same sample. However, dummy variables are only active if they are part of the in-sample period and they are not active as part of the forecast horizon.

Let the realisations of variable  $x$  for the sample  $t = 1, \dots, T$  be denoted as  $(x_{1|T}, \dots, x_{t|T}, \dots, x_{T|T})$  and the forecasts as  $(x_{T+1|T}, \dots, x_{T+h|T})$ . So, the  $h$ -step ahead forecasts  $x_{t|t-h}$  relate to the forecast for  $x_{t|t}$  generated at period  $(t-h)$ . The forecast exercise entails a two-dimensional panel structure that consists of the endogenous/conditional-dimension, i.e.  $x^{endo}$  vs.  $x^{cond}$  and the forecast horizon dimension  $h$ , i.e.  $x_{t|t-h}$ . Using seasonal dummies  $S_j$  and the dummy for 2008(4),  $i_{08q4}$ , capturing the outbreak of the credit crisis, the forecast performance is analyzed by the following panel regression equation:

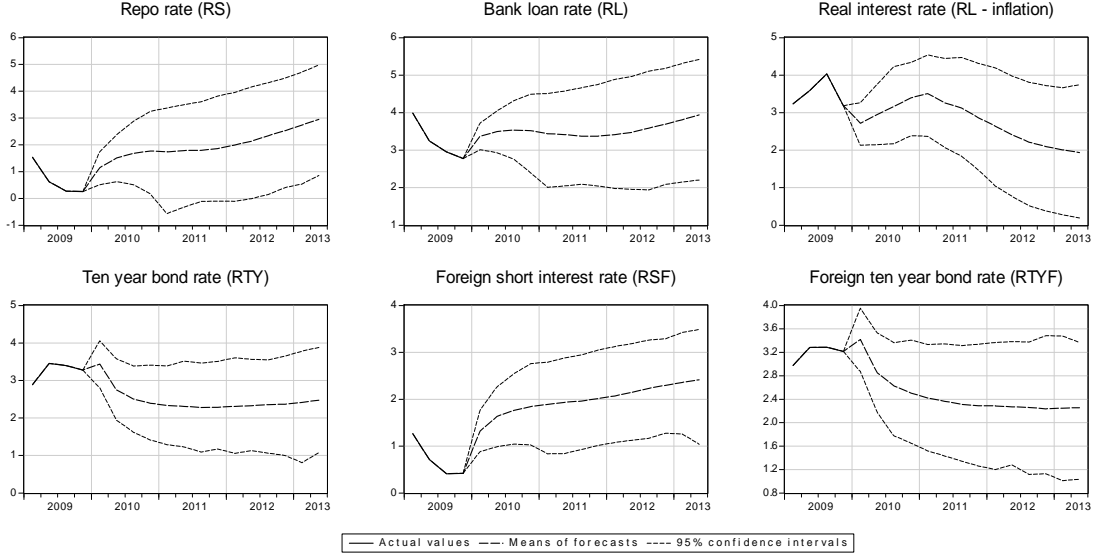


Figure 9: Forecasts of interest rates.

$$\begin{aligned} \Delta x_{t|t} = & \gamma \Delta x_{t-1|t} + \alpha^{endo} + \alpha^{cond} + \beta^{endo} \Delta x_{t|t-h}^{endo} + \beta^{cond} \Delta x_{t|t-h}^{cond} \\ & + \theta h + \sum_{j=1}^3 \delta_j S_j + \iota_1 i_{08q4}. \end{aligned} \quad (46)$$

Table 1 shows the estimated parameters for the endogenous and conditional forecasts for the variables  $x = \{y, pfr, ph, nex, rs\}$  that are the result of a panel regression where the forecasts are pooled over horizon  $h$ . Considering the simple regression equation  $\Delta x_{t|t} = \alpha + \beta \Delta x_{t|t-h}$ , then a perfect forecast would imply  $\alpha = 0$  and  $\beta = 1$  for every horizon  $h$ . The results indicate that Moses does not provide perfect forecasts! Interestingly enough, however, the performance of the Taylor-rule based short term interest rate forecasts and the nominal exchange rate forecasts comes close.

Considering the autoregressive augmented equation  $\Delta x_{t|t} = \gamma \Delta x_{t-1|t} + \alpha + \beta \Delta x_{t|t-h}$ , then a significantly estimated parameter  $\hat{\beta}$  indicates that the underlying model generating the forecasts  $\Delta x_{t|t-h}$  possesses some forecasting power for the specific variable  $x$ . The results of Table 1 attests the forecasting power of Moses, even though the improvement for quarterly GDP growth is minor. Moreover, the results show an improvement over the random walk forecasts for the nominal exchange rate.

Finally, the full specification (46) analyses the forecasting performance while taking into account the forecast horizon  $h$ , seasonal dummies  $S$  and the outbreak of the credit crisis  $i_{08q4}$ . The seasonal dummies capture the remaining seasonality patterns that remained in the seasonally adjusted series. The credit crisis dummy  $i_{08q4}$  doesn't seem to be relevant for Swedish consumer and house prices. Finally, the forecasting performance of the endogenous and conditional forecasts turns out to be quite similar. This notion is possibly due to the resemblance with their eventual realisations of the conditioning values for the exogenous variables and the endogenous forecasts for foreign GDP, consumer prices and short term interest rate. The only exception is the oil price that quite unexpectedly peaked at almost 150 dollars in July 2008.

Table 1: Forecast evaluation regressions

	GDP						Prices					
	Coeff	t-Stat	Coeff	t-Stat	Coeff	t-Stat	Coeff	t-Stat	Coeff	t-Stat	Coeff	t-Stat
Constant	$\alpha$		0.36		53.68							
Constant endogenous	$\alpha^{endo}$	0.29	16.20	0.16	9.70	0.40	26.66	0.32	33.30	0.30	36.68	
Constant conditional	$\alpha^{cond}$	0.31	18.24	0.18	11.35	0.31	20.07	0.26	22.21			
Variable (t-1)	$\gamma$	0.28	31.32			-0.03	-2.62			-0.03	-3.26	
Forecast endogenous	$\beta^{endo}$	0.14	9.40	0.65	32.33	0.21	9.68	0.24	12.57	0.31	17.19	
Forecast conditional	$\beta^{cond}$	0.12	9.36	0.62	31.34	0.33	14.13	0.35	15.81	0.30	17.86	
Forecast horizon	$\theta$	0.00	-1.97			0.00	-4.08					
Seasonal dummy 1	$\delta_1$	0.25	14.39			0.01	0.99					
Seasonal dummy 2	$\delta_2$	0.02	1.13			-0.04	-4.40					
Seasonal dummy 3	$\delta_3$	0.04	2.85			-0.04	-3.19					
Dummy 2008Q4	$\iota$	-4.26	-99.99			-4.37	-140.94					
R-squared		0.995		0.69		0.27		0.31		0.29		
Adjusted R-squared		0.995		0.69		0.26		0.31		0.29		

Forecast evaluation regressions, continued

	House Price				Interest Rate				
	Coeff	t-Stat	Coeff	t-Stat	Coeff	t-Stat	Coeff	t-Stat	
Constant			0.09	3.04			0.03	6.84	
Constant endogenous	$\alpha^{endo}$	-1.10	-16.81	0.55	12.39	0.06	6.56	0.08	10.17
Constant conditional	$\alpha^{cond}$	-1.13	-17.01	0.46	10.47	0.01	1.28	-0.01	-1.97
Variable (t-1)	$\gamma$	0.45	29.49			0.24	25.04		
Forecast endogenous	$\beta^{endo}$	0.26	12.33	0.76	37.12	0.63	21.52	1.11	33.43
Forecast conditional	$\beta^{cond}$	0.26	13.91	0.75	39.62	0.49	23.62	0.90	37.95
Forecast horizon	$\theta$	0.01	4.33			0.00	1.38		
Seasonal dummy 1	$\delta_1$	1.29	22.05			0.03	3.39		
Seasonal dummy 2	$\delta_2$	3.08	36.66			-0.07	-7.79		
Seasonal dummy 3	$\delta_3$	1.82	37.23			0.03	2.29		
Dummy 2008Q4	$\iota$					-1.14	-37.40		
R-squared		0.94		0.76		0.94		0.74	
Adjusted R-squared		0.94		0.76		0.94		0.74	

Forecast evaluation regressions, continued

		Exchange Rate							
		Coeff	t-Stat	Coeff	t-Stat	Coeff	t-Stat	Coeff	t-Stat
Constant	$\alpha$			0.00		0.00			-0.50
Constant endogenous	$\alpha^{endo}$	-0.01	-10.25	0.00	-0.61				
Constant conditional	$\alpha^{cond}$	-0.01	-8.88	0.00	4.07				
Variable (t-1)	$\gamma$	0.11	6.73			0.06	4.22		
Forecast endogenous	$\beta^{endo}$	0.60	26.45	0.81	39.07	0.64	26.00		
Forecast conditional	$\beta^{cond}$	0.53	25.73	0.88	38.85	0.57	25.67		
Forecast horizon	$\theta$	0.00	-2.13						
Seasonal dummy 1	$\delta_1$	0.01	17.19						
Seasonal dummy 2	$\delta_2$	0.01	6.68						
Seasonal dummy 3	$\delta_3$	0.01	14.39						
Dummy 2008Q4	$\iota$	0.06	40.70			0.05	36.07		
R-squared		0.94		0.77		0.94			
Adjusted R-squared		0.94		0.77		0.94			

## 8 Conclusions

We have documented MOSES which is aggregate econometric model for Sweden. The model has been constructed with the requirement of short-term forecasting over the policy horizon in mind. The model is based on a coherent econometric modelling strategy combined with the use of relevant economic theories for the different markets covered by the model. The degree of endogeneity of MOSES is high, very few variables are set by the model user, and in this respect MOSES is more comparable to structural VARs and DSGE-models than to traditional sector-by-sector macroeconomic models. In terms of econometric methodology, MOSES is perhaps closer to the econometric tradition of quantitative macroeconomic modelling.

The majority of the equations of MOSES have been estimated on a shorter sample that covers the era of operational inflation targeting, i.e. from 1995.<sup>8</sup> The choice of a relatively short sample period increases the relevance of the estimation results for the present monetary policy regime. In terms of precision of the estimates, and robustness of the specified model structure to future developments, the relatively few number of observations is of course not ideal. However, since the economy is in any case constantly evolving, only time can show if we have succeeded in establishing functional relationships for the Swedish economy that have a some degree of permanence and therefore contain structural content. Experience from an aggregate model of Norway gives reason for optimism, given the right approach to model maintenance which involve quality control, adaptation of the model specification in the light of new data as they come along, see [Bårdsen and Nymoen \(2009a\)](#).

Above, we have documented the forecast properties of MOSES over a period that includes the financial crises and the following downturn in the Swedish real economy. Only part of this period was part of the sample period used for the specification and estimation of MOSES. The results of the forecast evaluation shows that MOSES compete well with random walk forecasts (a much used benchmark), but also that the forecasts errors are biased, perhaps because of the impact of the credit and jobs crisis.

Without quality control—service, re-specification, and adaptation—any empirical model will decay over time, and rapidly loose its relevance both for forecasting and as an aid to understanding the macro economy. In the design of the version of MOSES documented in this paper we have made use of econometric software for automatized model specification. It is our experience that this tool greatly cuts the costs of maintaining an econometric model. To be specific, the use of automatized econometric specification is essential for efficient adaptation of the model to non-trivial data revisions, which we expect will be needed regularly when modelling seasonally adjusted data over a relatively short sample period.

---

<sup>8</sup>[http://www.riksbank.com/upload/Dokument/rb\\_10years.pdf](http://www.riksbank.com/upload/Dokument/rb_10years.pdf).

## References

- Akram, Q. F. and R. Nymoen (2009). Model Selection for Monetary Policy Analysis—How Important is Empirical Validity? *Oxford Bulletin of Economics and Statistics*, 71, 35–68.
- Blanchflower, D. G. and A. J. Oswald (1994). *The Wage Curve*. The MIT Press, Cambridge, Massachusetts.
- Bårdsen, G. (1989). Estimation of Long Run Coefficients in Error Correction Models. *Oxford Bulletin of Economics and Statistics*, 51, 345–350.
- Bårdsen, G., Ø. Eitrheim, E. S. Jansen and R. Nymoen (2005). *The Econometrics of Macroeconomic Modelling*. Oxford University Press, Oxford.
- Bårdsen, G., S. Hurn and K. Lindsay (2004). Linearizations and equilibrium correction models. *Studies in Nonlinear Dynamics and Econometrics*, 8(5).
- Bårdsen, G., E. S. Jansen and R. Nymoen (2003). Econometric Inflation Targeting. *Econometrics Journal*, 6(2), 429–460.
- Bårdsen, G. and R. Nymoen (2003). Testing Steady-State Implications for the NAIRU. *Review of Economics and Statistics*, 85, 1070–1075.
- Bårdsen, G. and R. Nymoen (2009a). Macroeconometric modelling for policy. In Patterson, K. and T. Mills (eds.), *The Palgrave Handbook of Econometrics*, vol. 2. Palgrave.
- Bårdsen, G. and R. Nymoen (2009b). U.S. Natural Rate Dynamics Reconsidered. In Castle, J. and N. Shephard (eds.), *The Methodology and Practise of Econometrics*, chap. 16, 389–414. Oxford University Press, Oxford.
- Claeys, P. (2008). Rules, and their effects on fiscal policy in Sweden. *Swedish Economic Policy Review*, 15, 7–47.
- Doornik, J. A. (2009). Autometrics. In Castle, J. L. and N. Shephard (eds.), *The Methodology and Practise of Econometrics*, chap. 4, 88–121. Oxford University Press.
- Forslund, A., N. Gottfries and A. Westermark (2008). Real and Nominal Wage Adjustment in Open Economies. *Scandinavian Journal of Economics*, 110((1)), 169–195.
- Garratt, A., K. Lee, M. H. Pesaran and Y. Shin (2006). *Global and National Macroeconomic Modelling: A Long-Run Structural Approach*. Oxford University Press.
- Hendry, D. F. (1995). *Dynamic Econometrics*. Oxford University Press, Oxford.
- Hendry, D. F. and H. M. Krolzig (1999). Improving on "Data Mining Reconsidered" by K.D. Hoover and S.J. Perez. *Econometrics Journal*, 2, 41–58.
- Hoover, K. D. and S. J. Perez (1999). Data Mining Reconsidered: Encompassing and the General-to-Specific Approach to Specification Search. *Econometrics Journal*, 2, 1–25.
- Johansen, S. (1995). *Likelihood-Based Inference in Cointegrated Vector Autoregressive Models*. Oxford University Press, Oxford.
- Johansen, S. (2006). Cointegration: An Overview. In Mills, T. C. and K. Patterson (eds.), *Palgrave Handbook of Econometrics*, vol. 1 of *Econometric Theory*. Palgrave-MacMillan.
- Juselius, K. (2007). *The Cointegrated VAR Model: Methodology and Applications*. Oxford University Press.



- Kolsrud, D. and R. Nymoen (1998). Unemployment and the Open Economy Wage-Price Spiral. *Journal of Economic Studies*, 25, 450–467.
- Layard, R., S. Nickell and R. Jackman (2005). *Unemployment*. Oxford University Press, Oxford, 2nd edn. First published 1991.
- Ltkepohl, H. (2006). Vector Autoregressive Models. In Mills, T. C. and K. Patterson (eds.), *Econometric Theory*, vol. 1 of *Palgrave Handbook of Econometrics*, 287–325. Palgrave MacMillan.
- Nymoen, R. and A. Rødseth (2003). Explaining unemployment: some lessons from Nordic wage formation. *Labour Economics*, 10, 1–29.
- Sørensen, P. and H. J. Whitta-Jacobsen (2010). *Introducing Advanced Macroeconomics: Growth and Business Cycles*. McGraw-Hill Education, 2nd edn.
- Spanos, A. (2008). Sufficiency and Acillarity Revisited: Testing the Validity of a Statistical Model. In Castle, J. L. and N. Shephard (eds.), *The Methodology and Practice of Econometrics*. Oxford Univeristy Press, Oxford.

## A Appendix: Econometric results

The sample period covers the period after Sweden’s change from a fixed to a floating exchange rate regime in November 1992. The majority of the equations are estimated on shorter sample periods, beginning with the period of explicit inflation targeting. The resulting model, corresponding to Figure 1, is presented in Tables 2 - 4. The first term on right hand side of each equation is an equilibrium correction coefficient, multiplied by the associated lagged deviation from steady-state (inside brackets). The cointegrating relationships in the sub-models have been estimated by means of the Johansen(1995) procedure, while the single-equation relationships have been estimated using the method of Bårdsen(1989). To save space, the parameters of the long-run relationships are reported without standard errors, which are available upon request.<sup>9</sup>

Starting with the exchange rate channel of monetary policy, the main determinant of movements in the nominal exchange rate is interest differential  $RS - RSF$  in (47). Exchange rate movements then affects import prices through a pass-through process in (48).

Import price inflation provides the link to the labour market and the price-wage inflation model (49 and 50), where prices are set as a mark-up on labour- and intermediate costs while the wage share is negatively affected by the unemployment rate.

Productivity modelled in (51) represents aggregate supply effects and, in accordance with efficiency wage theories, is a function of the real wage and the unemployment rate. The equilibrium unemployment rate defined by (52) is a function of labour market policy in the form of training programmes and the replacement ratio, while the dynamics are mainly a function of aggregate demand effects.

The aggregate demand in (53) is affected by fiscal policy through public demand  $G$ , but also by foreign demand  $YF$  and private demand through households demand for real credit  $CRN/P$ . The credit channel provides a link for monetary policy through the effects of the bank loan rate  $RL$  on households aggregate demand for credit modelled in (54), while public expenditure long-run budget consistency is captured through modelling public demand as a function of aggregate demand.

Monetary policy is modelled as a standard Taylor-rule reaction function with interest rate smoothing in (60), except that we use output growth rather than the unobserved output gap. The inflation target is in terms of inflation corrected for interest rate effects. In addition to inflation and output growth, the policy rate also reacts to the foreign interest rate. Finally, the transmission mechanisms of monetary policy from the policy rate to the bank lending rate and bond rate are modelled as a system in (58)-(59) again taking into account the openness of the Swedish economy.

---

<sup>9</sup>The standard errors of the reported equilibrium-correction coefficients can be used as a guide to the joint significance of the variables that make out the estimated equilibrium relationships.

Table 2: The equations in MOSES. Standard errors are reported in parentheses below the coefficients. See appendix B for information about the statistics reported below each equation

### The exchange rate

$$\begin{aligned} \Delta nex_t = & - \frac{0.27}{(0.038)} [(nex + pcf - p)_{t-1} + 0.07 (RS_{t-1} - RSF_{t-2}) + 0.19u_{t-2} + 0.68yf_{t-2}] \\ & + \frac{0.055}{(0.0081)} \Delta RSF_{t-1} + \frac{0.23}{(0.071)} \Delta u_{t-1} - \frac{2.4}{(0.14)} \Delta_2 yf_t + \frac{0.99}{(0.14)} \end{aligned} \quad (47)$$

### Import prices

$$\begin{aligned} \Delta pm_t = & - \frac{0.11}{(0.040)} [(pm - nex - ppi) - 0.6(p - nex - pf)]_{t-1} + \frac{0.74}{(0.072)} \Delta pm_{t-4} \\ & + \frac{0.41}{(0.053)} \Delta nex_t - \frac{0.28}{(0.048)} \Delta nex_{t-4} - \frac{0.47}{(0.10)} \Delta ppi_{t-2} + \frac{2.8}{(0.36)} \Delta_4 \Delta pcf_t + \frac{0.26}{(0.13)} \Delta y_t \end{aligned} \quad (48)$$

### Prices and wages

$$\begin{aligned} \Delta p_t = & - \frac{0.07}{(0.015)} [p_{t-2} - 0.5(w - pr)_{t-1} - 0.5pm_{t-1}] + \frac{0.12}{(0.076)} \Delta (w - pr)_t \\ & + \frac{0.023}{(0.0088)} \Delta pe_t + \frac{0.16}{(0.087)} \Delta y_t + \frac{1.1}{(0.20)} \Delta pcf_t + \frac{0.043}{(0.01)} \end{aligned} \quad (49)$$

$$\Delta w_t = - \frac{0.14}{(0.022)} (w_{t-3} - p_{t-1} - .6pr_{t-3} + 0.2u_{t-2}) - \frac{0.57}{(0.155)} \Delta_2 w_{t-1} - \frac{0.04}{(0.0077)} \quad (50)$$

### Productivity

$$\Delta pr_t = - \frac{0.047}{(0.015)} [pr_{t-5} - 0.86(w_{t-3} - p_{t-1}) - 0.06u_{t-2}] + \frac{0.1}{(0.025)} \Delta_3 (w - p)_t \quad (51)$$

$$- \frac{0.2}{(0.068)} \Delta pr_{t-4} + \frac{0.02}{(0.0072)} \Delta u_{t-1} - \frac{0.012}{(0.0037)} I92(4)_t$$

$$- \frac{0.012}{(0.0037)} I96(2)_t - \frac{0.045}{(0.063)} I08(4)_t + \frac{0.1}{(0.02)}$$

Table 3: The equations in MOSES, continued

**The rate of unemployment**

$$\begin{aligned} \Delta u_t = & - \frac{0.029}{(0.092)} u_{t-2} - \frac{0.34}{(0.12)} amun_{t-1} + \frac{0.32}{(0.09)} \Delta u_{t-1} - \frac{0.65}{(0.18)} \Delta amun_t \quad (52) \\ & - \frac{1.14}{(0.21)} \Delta_3 y_t + \frac{0.0027}{(0.0007)} rpr_t - \frac{0.07}{(0.023)} I99(4)_t + \frac{0.01}{(0.03)} \end{aligned}$$

**GDP-output**

$$\begin{aligned} \Delta y_t = & - \frac{0.18}{(0.055)} (y - yf)_{t-1} + \Delta \left[ \left( \frac{G}{Y} \right)_{t-1} g_t \right] - \frac{0.38}{(0.13)} \Delta y_{t-1} \quad (53) \\ & - \frac{0.0014}{(0.0008)} (RL - \pi)_{t-4} + \frac{3.4}{(0.41)} x_{-st} \Delta yf_t + \frac{1.4}{(0.4)} x_{-st-2} \Delta yf_{t-2} + \frac{1.5}{(0.49)} \end{aligned}$$

**Credit, house prices and housing stock**

$$\begin{aligned} \Delta (crn - p)_t = & - \frac{0.1}{(0.013)} \{ (crn - p)_{t-1} - 0.27y_{t-1} - 0.75 [(ph - p)_{t-3} + hst_{-1}] + .04RL_{t-1} \} \\ & (54) \end{aligned}$$

$$+ \frac{0.19}{(0.095)} \Delta (ph - p)_t - \frac{0.0076}{(0.0042)} \Delta RL_t + \frac{0.079}{(xxx)} I01(1)_t + \frac{0.0047}{(0.002)} + season$$

$$\begin{aligned} \Delta (ph - p)_t = & - \frac{0.36}{(0.088)} [(ph - p)_{t-2} - 0.85 (crn - p)_{t-1} - 0.4 (w + y - pr - p)_{t-1} + 0.7 hst_{-3}] \\ & (55) \end{aligned}$$

$$+ \frac{0.27}{(0.29)} \Delta (crn - p)_t + \frac{0.86}{(0.3)} \Delta (w + y - pr - p)_t - \frac{0.18}{(0.04)} \Delta u_t$$

$$- \frac{0.041}{(0.0096)} I01(2) - \frac{2.4}{(0.59)} + season$$

$$\begin{aligned} \Delta hst_t = & - \frac{0.22}{(0.16)} [hst_{-3} - 0.15 (crn - p)_{t-1}] - \frac{0.44}{(0.14)} \Delta hst_{-1} - \frac{0.55}{(0.16)} \Delta hst_{-2} \\ & (56) \end{aligned}$$

$$- \frac{0.03}{(0.008)} I96(1) + \frac{2,7}{(1.9)}$$

Table 4: The equations in MOSES, continued

**Fiscal policy**

$$\Delta g_t = - \underset{(0.06)}{0.35} (g_{t-4} - 0.25y_{t-5}) - \underset{(0.059)}{0.17} \Delta_2 g_{t-1} - \underset{(0.07)}{0.21} \Delta y_{t-4} + \underset{(0.53)}{3.1} \quad (57)$$

**Interest rates**

$$\Delta RTY_t = - \underset{(0.05)}{0.15} (RTY - 0.3RS - 0.85RTYF)_{t-1} + \underset{(0.06)}{1.15} \Delta RTYF_t \quad (58)$$

$$\Delta RL_t = - \underset{(0.026)}{0.09} (RL - .7RTY - .7RS)_{t-1} + \underset{(0.04)}{0.66} \Delta RS_t \quad (59)$$

$$+ \underset{(0.06)}{0.15} \Delta RTY_t - \underset{(0.1)}{0.51} I07(4)_t$$

**Policy interest rate**

$$\Delta RS_t = - \underset{(0.027)}{0.18} \left[ RS_{t-1} - RSF_{t-1} - 1.4(\pi_{FRt} - 2) - 0.2\dot{Y}_t \right] \quad (60)$$

$$+ \underset{(0.075)}{0.74} \Delta RSF_t - \underset{(0.028)}{0.03} ,$$

where  $\pi_{FRt} \equiv 100\Delta_4 PFR_{,t}/PFR_{,t-4}$  and  $\dot{Y}_t \equiv 100\Delta_4 Y_t/Y_{t-4}$ .

**Inflation corrected for interest rates**

$$(\pi_{FR} - \pi)_t = \underset{(0.032)}{0.96} (\pi_{FR} - \pi)_{t-1} + \underset{(0.11)}{0.48} \Delta (RL - RS)_t \quad (61)$$

$$+ \underset{(0.18)}{1.4} I09(1) + \underset{(0.18)}{0.67} I09(2)$$

Table 5: The equations in MOSES—foreign block

**Foreign producer prices**

$$\begin{aligned} \Delta ppi_t = & - \frac{0.05}{(0.016)} (ppi - 0.2spoil)_{t-1} + \frac{0.22}{(0.08)} \Delta ppi_{t-1} + \frac{0.04}{(0.005)} \Delta spoil_t \quad (62) \\ & + \frac{0.018}{(0.005)} I08(2) - \frac{0.033}{(0.006)} I08(4) - \frac{0.014}{(0.006)} I09(1) - \frac{0.031}{(0.01)} \end{aligned}$$

**Foreign consumer prices**

$$\begin{aligned} \Delta pcf = & - \frac{0.007}{(0.003)} (pcf - ppi)_{t-1} + \frac{0.13}{(0.06)} \Delta pcf_{t-1} + \frac{0.2}{(0.06)} \Delta pcf_{t-3} + \frac{0.31}{(0.07)} \Delta pcf_{t-4} \quad (63) \\ & + \frac{0.22}{(0.016)} \Delta ppi_t - \frac{0.092}{(0.02)} \Delta ppi_{t-4} + \frac{0.04}{(0.008)} 0.01Y\dot{F}_{t-4}, \end{aligned}$$

where  $Y\dot{F}_t \equiv 100\Delta_4 YF_t / YF_{t-4}$ .

**Foreign aggregate demand**

$$\begin{aligned} \Delta yf_t = & - \frac{0.013}{(0.0049)} [yf_{t-3} - .073(RSF - \pi_F)_{t-2}] + \frac{0.33}{(0.073)} \Delta yf_{t-1} \quad (64) \\ & - \frac{0.0085}{(0.0026)} I08(3) - \frac{0.019}{(0.0027)} I08(4) - \frac{0.021}{(0.003)} I09(1) + \frac{0.069}{(0.025)}, \end{aligned}$$

where  $\pi_{Ft} \equiv 100\Delta_4 PCF_t / PCF_{t-4}$ .

**Foreign policy rate**

$$\begin{aligned} \Delta RSF_t = & - \frac{0.1}{(0.024)} \left[ RSF - (\pi_{FT} - 2) - 1.3 \left( Y\dot{F} - 3 \right) \right]_{t-1} \quad (65) \\ & + \frac{0.21}{(0.091)} \Delta \pi_{Ft} + \frac{0.29}{(0.059)} \Delta Y\dot{F}_t + \frac{0.46}{(0.12)} \end{aligned}$$

**Foreign bond rate**

$$\Delta RTYF_t = - \frac{0.09}{(0.022)} (RTYF_{t-1} - RSF_{t-2}) + \frac{0.51}{(0.095)} \Delta^2 RSF_t \quad (66)$$

## B Appendix: Data definitions

The model employs mainly seasonally adjusted data, and exceptions from this are noted in the list below. Unless another source is given, all data are taken from the MOSES database provided by Riksbanken. The database is the same as used for other models who currently is used in the forecast process, Ramses II and BVAR.

The model is developed and estimated with *Oxmetrics 6* ([www.oxmetrics.net](http://www.oxmetrics.net)) and then re-estimated and simulated with *Eviews 7* ([www.eviews.com](http://www.eviews.com)).

- AMUN* Accomodative stance (with respect to unemployment). [MOSES database reference: (SYSS\_SA+UTB\_SA)/antal arbetslösa]
- CRN* Household debt current prices. [MOSES database reference: Hushållens totala finansiella skulder, löpande pris, SESKULDVQ]
- G* Government sector consumption expenditure fixed prices. [MOSES database reference: Offentlig konsumtions volym, SEGCSACAQ]
- NEX* Nominal effective exchange rate, TCW weighted nominal value of the krone.[MOSES database reference: Nominell, SEK/TCW, SETCWQ]
- P* Consumer price index.[MOSES database reference: KPI, säsongrensad, SECPISAQ]
- PFR* Consumer price index at constant interest rate.[MOSES database reference: KPIF, säsongrensad, SECPIFSAQ]
- PE* Energy price index, component of consumer price index [Energipriser i KPI, SEEN-CPIM].
- PF* Foreign consumer price index. [MOSES database reference: KPI, TCW-vägd, säsongrensad, TCWCPISAQ]
- PH* House price index. [MOSES database reference: Sweden, House Prices, Owner-occupied one- and two-dwelling buildings, whole country, Index, SEK, 1981=100]
- PPI* “World” producer price index, manufacturing. [MOSES database reference: Global PPI, manufacturing, TCW-vägd, index 2000=100, TCWPPIQ].
- PM* Import price index. [MOSES database reference: Importpris, SEMPQ. Not seasonally adjusted]
- PR* Average labour productivity [MOSES database reference: Arbetsproduktiviteten i hela ekonomin, säsongrensad, GDP/HOURS , SEYSACOQ/SEHOURLSSAQ].
- RPR* Replacement ratio, percentage. [MOSES database reference: Ersättningsgrad vid arbetslöshet, SEEAFFSAQ].
- RSF* Foreign “repo” rate. [MOSES database reference: Reporänta, TCW-vägd,TCWREPOQ].
- RS* “Repo” rate. [MOSES database reference:Reporänta, SEREPOQ].
- RL* Bank loan rate. [MOSES database reference: Sweden, Personal Lending Rates, Banks, Households incl. NPISH, All loans, SEK].
- RTY* 10 year domestic interest rate. [MOSES database reference: 10-årsränta, SER10YQ].
- RTYF* 10 year foreign interest rate. [MOSES database reference: 10-årsränta utland, TCWR10YQ].

*SPOIL* Oil price index. [MOSES database reference: Oljepris, Brent, WDPOQ, USD]

*Y* GDP. [MOSES database reference:BNP volym, säsongrensad, SEYSACAQ].

*YF* Foreign GDP. [MOSES database reference:BNP volym, TCW-vägd, säsongrensad, TCWYSAQ]

*U* Unemployment percent of labour force. [MOSES database reference: Andel arbetslösa, ILO-definition, säsongrensad

SEURILOSAQ]

*W* Nominal average hourly wage cost. [MOSES database reference: Arbetskostnad/timme, hela ekonomin, NR, säsongrensad, SEWEKSAQ].

### **Dummies:**

Impulse dummies are denoted  $I_{yy}(q)$ . For example  $I_{96}(1)$  is a dummy which is one in 1996, first quarter, and zero in all other quarters in the sample. The shift dummy  $x_{st}$  is proxying a shift in export shares from 2004(1).



# Earlier Working Papers:

For a complete list of Working Papers published by Sveriges Riksbank, see [www.riksbank.se](http://www.riksbank.se)

Estimation of an Adaptive Stock Market Model with Heterogeneous Agents by <i>Henrik Amilon</i> .....	2005:177
Some Further Evidence on Interest-Rate Smoothing: The Role of Measurement Errors in the Output Gap by <i>Mikael Apel</i> and <i>Per Jansson</i> .....	2005:178
Bayesian Estimation of an Open Economy DSGE Model with Incomplete Pass-Through by <i>Malin Adolfson</i> , <i>Stefan Laséen</i> , <i>Jesper Lindé</i> and <i>Mattias Villani</i> .....	2005:179
Are Constant Interest Rate Forecasts Modest Interventions? Evidence from an Estimated Open Economy DSGE Model of the Euro Area by <i>Malin Adolfson</i> , <i>Stefan Laséen</i> , <i>Jesper Lindé</i> and <i>Mattias Villani</i> .....	2005:180
Inference in Vector Autoregressive Models with an Informative Prior on the Steady State by <i>Mattias Villani</i> .....	2005:181
Bank Mergers, Competition and Liquidity by <i>Elena Carletti</i> , <i>Philipp Hartmann</i> and <i>Giancarlo Spagnolo</i> .....	2005:182
Testing Near-Rationality using Detailed Survey Data by <i>Michael F. Bryan</i> and <i>Stefan Palmqvist</i> .....	2005:183
Exploring Interactions between Real Activity and the Financial Stance by <i>Tor Jacobson</i> , <i>Jesper Lindé</i> and <i>Kasper Roszbach</i> .....	2005:184
Two-Sided Network Effects, Bank Interchange Fees, and the Allocation of Fixed Costs by <i>Mats A. Bergman</i> .....	2005:185
Trade Deficits in the Baltic States: How Long Will the Party Last? by <i>Rudolfs Bems</i> and <i>Kristian Jönsson</i> .....	2005:186
Real Exchange Rate and Consumption Fluctuations following Trade Liberalization by <i>Kristian Jönsson</i> .....	2005:187
Modern Forecasting Models in Action: Improving Macroeconomic Analyses at Central Banks by <i>Malin Adolfson</i> , <i>Michael K. Andersson</i> , <i>Jesper Lindé</i> , <i>Mattias Villani</i> and <i>Anders Vredin</i> .....	2005:188
Bayesian Inference of General Linear Restrictions on the Cointegration Space by <i>Mattias Villani</i> .....	2005:189
Forecasting Performance of an Open Economy Dynamic Stochastic General Equilibrium Model by <i>Malin Adolfson</i> , <i>Stefan Laséen</i> , <i>Jesper Lindé</i> and <i>Mattias Villani</i> .....	2005:190
Forecast Combination and Model Averaging using Predictive Measures by <i>Jana Eklund</i> and <i>Sune Karlsson</i> .....	2005:191
Swedish Intervention and the Krona Float, 1993-2002 by <i>Owen F. Humpage</i> and <i>Javiera Ragnartz</i> .....	2006:192
A Simultaneous Model of the Swedish Krona, the US Dollar and the Euro by <i>Hans Lindblad</i> and <i>Peter Sellin</i> .....	2006:193
Testing Theories of Job Creation: Does Supply Create Its Own Demand? by <i>Mikael Carlsson</i> , <i>Stefan Eriksson</i> and <i>Nils Gottfries</i> .....	2006:194
Down or Out: Assessing The Welfare Costs of Household Investment Mistakes by <i>Laurent E. Calvet</i> , <i>John Y. Campbell</i> and <i>Paolo Sodini</i> .....	2006:195
Efficient Bayesian Inference for Multiple Change-Point and Mixture Innovation Models by <i>Paolo Giordani</i> and <i>Robert Kohn</i> .....	2006:196
Derivation and Estimation of a New Keynesian Phillips Curve in a Small Open Economy by <i>Karolina Holmberg</i> .....	2006:197
Technology Shocks and the Labour-Input Response: Evidence from Firm-Level Data by <i>Mikael Carlsson</i> and <i>Jon Smedsaas</i> .....	2006:198
Monetary Policy and Staggered Wage Bargaining when Prices are Sticky by <i>Mikael Carlsson</i> and <i>Andreas Westermark</i> .....	2006:199
The Swedish External Position and the Krona by <i>Philip R. Lane</i> .....	2006:200
Price Setting Transactions and the Role of Denominating Currency in FX Markets by <i>Richard Friberg</i> and <i>Fredrik Wilander</i> .....	2007:201
The geography of asset holdings: Evidence from Sweden by <i>Nicolas Coeurdacier</i> and <i>Philippe Martin</i> .....	2007:202
Evaluating An Estimated New Keynesian Small Open Economy Model by <i>Malin Adolfson</i> , <i>Stefan Laséen</i> , <i>Jesper Lindé</i> and <i>Mattias Villani</i> .....	2007:203
The Use of Cash and the Size of the Shadow Economy in Sweden by <i>Gabriela Guibourg</i> and <i>Björn Segendorf</i> .....	2007:204
Bank supervision Russian style: Evidence of conflicts between micro- and macro-prudential concerns by <i>Sophie Claeys</i> and <i>Koen Schoors</i> .....	2007:205

Optimal Monetary Policy under Downward Nominal Wage Rigidity by <i>Mikael Carlsson</i> and <i>Andreas Westermark</i> .....	2007:206
Financial Structure, Managerial Compensation and Monitoring by <i>Vittoria Cerasi</i> and <i>Sonja Daltung</i> .....	2007:207
Financial Frictions, Investment and Tobin's q by <i>Guido Lorenzoni</i> and <i>Karl Walentin</i> .....	2007:208
Sticky Information vs. Sticky Prices: A Horse Race in a DSGE Framework by <i>Mathias Trabandt</i> .....	2007:209
Acquisition versus greenfield: The impact of the mode of foreign bank entry on information and bank lending rates by <i>Sophie Claeys</i> and <i>Christa Hainz</i> .....	2007:210
Nonparametric Regression Density Estimation Using Smoothly Varying Normal Mixtures by <i>Mattias Villani</i> , <i>Robert Kohn</i> and <i>Paolo Giordani</i> .....	2007:211
The Costs of Paying – Private and Social Costs of Cash and Card by <i>Mats Bergman</i> , <i>Gabriella Guibourg</i> and <i>Björn Segendorf</i> .....	2007:212
Using a New Open Economy Macroeconomics model to make real nominal exchange rate forecasts by <i>Peter Sellin</i> .....	2007:213
Introducing Financial Frictions and Unemployment into a Small Open Economy Model by <i>Lawrence J. Christiano</i> , <i>Mathias Trabandt</i> and <i>Karl Walentin</i> .....	2007:214
Earnings Inequality and the Equity Premium by <i>Karl Walentin</i> .....	2007:215
Bayesian forecast combination for VAR models by <i>Michael K Andersson</i> and <i>Sune Karlsson</i> .....	2007:216
Do Central Banks React to House Prices? by <i>Daria Finocchiaro</i> and <i>Virginia Queijo von Heideken</i> .....	2007:217
The Riksbank's Forecasting Performance by <i>Michael K. Andersson</i> , <i>Gustav Karlsson</i> and <i>Josef Svensson</i> .....	2007:218
Macroeconomic Impact on Expected Default Frequency by <i>Per Åsberg</i> and <i>Hovick Shahnazarian</i> .....	2008:219
Monetary Policy Regimes and the Volatility of Long-Term Interest Rates by <i>Virginia Queijo von Heideken</i> .....	2008:220
Governing the Governors: A Clinical Study of Central Banks by <i>Lars Frisell</i> , <i>Kasper Roszbach</i> and <i>Giancarlo Spagnolo</i> .....	2008:221
The Monetary Policy Decision-Making Process and the Term Structure of Interest Rates by <i>Hans Dillén</i> .....	2008:222
How Important are Financial Frictions in the U.S. and the Euro Area by <i>Virginia Queijo von Heideken</i> .....	2008:223
Block Kalman filtering for large-scale DSGE models by <i>Ingvar Strid</i> and <i>Karl Walentin</i> .....	2008:224
Optimal Monetary Policy in an Operational Medium-Sized DSGE Model by <i>Malin Adolfson</i> , <i>Stefan Laséen</i> , <i>Jesper Lindé</i> and <i>Lars E.O. Svensson</i> .....	2008:225
Firm Default and Aggregate Fluctuations by <i>Tor Jacobson</i> , <i>Rikard Kindell</i> , <i>Jesper Lindé</i> and <i>Kasper Roszbach</i> .....	2008:226
Re-Evaluating Swedish Membership in EMU: Evidence from an Estimated Model by <i>Ulf Söderström</i> .....	2008:227
The Effect of Cash Flow on Investment: An Empirical Test of the Balance Sheet Channel by <i>Ola Melander</i> .....	2009:228
Expectation Driven Business Cycles with Limited Enforcement by <i>Karl Walentin</i> .....	2009:229
Effects of Organizational Change on Firm Productivity by <i>Christina Håkanson</i> .....	2009:230
Evaluating Microfoundations for Aggregate Price Rigidities: Evidence from Matched Firm-Level Data on Product Prices and Unit Labor Cost by <i>Mikael Carlsson</i> and <i>Oskar Nordström Skans</i> .....	2009:231
Monetary Policy Trade-Offs in an Estimated Open-Economy DSGE Model by <i>Malin Adolfson</i> , <i>Stefan Laséen</i> , <i>Jesper Lindé</i> and <i>Lars E.O. Svensson</i> .....	2009:232
Flexible Modeling of Conditional Distributions Using Smooth Mixtures of Asymmetric Student T Densities by <i>Feng Li</i> , <i>Mattias Villani</i> and <i>Robert Kohn</i> .....	2009:233
Forecasting Macroeconomic Time Series with Locally Adaptive Signal Extraction by <i>Paolo Giordani</i> and <i>Mattias Villani</i> .....	2009:234
Evaluating Monetary Policy by <i>Lars E.O. Svensson</i> .....	2009:235

Risk Premiums and Macroeconomic Dynamics in a Heterogeneous Agent Model by <i>Ferre De Graeve, Maarten Dossche, Marina Emiris, Henri Sneessens and Raf Wouters</i> .....	2010:236
Picking the Brains of MPC Members by <i>Mikael Apel, Carl Andreas Claussen and Petra Lennartsdotter</i> .....	2010:237
Involuntary Unemployment and the Business Cycle by <i>Lawrence J. Christiano, Mathias Trabandt and Karl Walentin</i> .....	2010:238
Housing collateral and the monetary transmission mechanism by <i>Karl Walentin and Peter Sellin</i> .....	2010:239
The Discursive Dilemma in Monetary Policy by <i>Carl Andreas Claussen and Øistein Røisland</i> .....	2010:240
Monetary Regime Change and Business Cycles by <i>Vasco Cúrdia and Daria Finocchiaro</i> .....	2010:241
Bayesian Inference in Structural Second-Price common Value Auctions by <i>Bertil Wegmann and Mattias Villani</i> .....	2010:242
Equilibrium asset prices and the wealth distribution with inattentive consumers by <i>Daria Finocchiaro</i> .....	2010:243
Identifying VARs through Heterogeneity: An Application to Bank Runs by <i>Ferre De Graeve and Alexei Karas</i> .....	2010:244
Modeling Conditional Densities Using Finite Smooth Mixtures by <i>Feng Li, Mattias Villani and Robert Kohn</i> .....	2010:245
The Output Gap, the Labor Wedge, and the Dynamic Behavior of Hours by <i>Luca Sala, Ulf Söderström and Antonella Trigari</i> .....	2010:246
Density-Conditional Forecasts in Dynamic Multivariate Models by <i>Michael K. Andersson, Stefan Palmqvist and Daniel F. Waggoner</i> .....	2010:247
Anticipated Alternative Policy-Rate Paths in Policy Simulations by <i>Stefan Laséen and Lars E.O. Svensson</i> .....	2010:248



Sveriges Riksbank

Visiting address: Brunkebergs torg 11

Mail address: se-103 37 Stockholm

Website: [www.riksbank.se](http://www.riksbank.se)

Telephone: +46 8 787 00 00, Fax: +46 8 21 05 31

E-mail: [registratorn@riksbank.se](mailto:registratorn@riksbank.se)