

Deviation between projected and observed precipitation trends greater with altitude

Murphy TR¹, Hanley ME², Ellis JS², Lunt PH¹

¹School of Geography, Earth and Environmental Science, ²School of Biological and Marine Sciences, Plymouth University, UK.

Corresponding author: Thomas R Murphy, School of Geography, Earth and Environmental Sciences, Plymouth University, Plymouth, PL4 8AA, UK. Telephone: 07741284381, email: thomas.murphy@students.plymouth.ac.uk

Running page head: Precipitation trends: observations vs projections

ABSTRACT: Variation in the amount and intensity of precipitation is one of the most important factors determining how biological systems respond to anthropogenic climate change. Moreover, given the importance of climate projections for influencing (inter)national policy, there is a pressing need to contextualise contemporary projections with observed trends to better inform environmental strategy and planning. In this study we examine trends from one of the longest paired time series of upland (>300m) and lowland precipitation records (1879 - 2012), and shorter-term observations (1961 - 2015) from multiple upland locations in South West (SW) England (Dartmoor National Park). In the period 1879 - 2012, total precipitation in the upland site increased by more than 10% for spring, autumn, winter, and annually; for the lowland site, only spring experienced a significant increase (8%) in precipitation. Increases in autumn, winter and annual precipitation were recorded at upland sites since the 1960s. We compare observed precipitation trends with the latest UK climate projections (UKCP18) for the region across two timeframes (60 and 90 years). Changes in the 30 year average between reference (1981 - 2010) and observed and projected precipitation totals were compared and deviations calculated. Comparisons between model projections and observed trends show large deviation for spring, summer and autumn precipitation in the mid to late 21st century, with the deviation greatest in upland localities. Winter projections however, were broadly consistent with observed trends. Results suggest uncertainties in future precipitation change are greatest in the uplands where the impacts on ecosystem services are the largest.

KEY WORDS: Upland ecosystems · UKCP18 · Precipitation trends · Ecosystem Services · Global Change Biology · Western Europe

1 INTRODUCTION

Upland areas (>300m) cover around one third of the UK's land area and are considered of national and international importance due to their biodiversity and cultural heritage (Reed et al. 2009). In South West (SW) England, regionally (i.e. NW Europe) important habitats such as upland heathland, Atlantic oak woodland and blanket bog, are associated with the upland granite plateaus of Dartmoor and Exmoor National Parks (JNCC 2019). These areas are vital for important ground nesting birds such as the Ring Ouzel (*Turdus torquatus*), Dunlin (*Calidris alpina*) and Golden Plover (*Pluvialis apricaria*) (Mercer 2009, DNPA 2019), and the conservation of globally significant lichen and bryophyte communities (Lamacraft et al. 2018).

Understanding precipitation change in the UK uplands is particularly important. These areas are integral for the delivery of multiple provisioning, regulating and cultural services (Holden et al. 2007, Curtis et al. 2014), being the source of 68% of the UK's freshwater (Van der Wal et al. 2011) and an estimated 40% of UK soil carbon stocks (Bradley et al. 2005). UK upland landscapes may provide significant future carbon farming opportunities (Brocket et al. 2019, Lunt et al. 2019).

Levels of precipitation in the SW uplands are over twice the average for UK lowland sites (Burt & Holden 2010, Perry 2014). Changes in precipitation patterns and distribution are significant because rainfall more than any other climatic variable has the greatest effects on below ground carbon storage and

plant species growth and composition (Collins et al. 2018, Lunt et al. 2019). This is particularly critical for SW England, where blanket bogs are considered climatically marginal (Clark et al. 2010).

Changes in precipitation can change the distribution of semi-natural plant communities via soil moisture (Morecroft et al. 2009, Walck et al. 2011, Le Roux et al. 2013, Cowles et al. 2018), particularly vital during the 'growing season', between spring and autumn for northern European blanket mire (March - October) and Atlantic oak woodland habitats (April - September). Reduced precipitation is associated with lower viability of sphagnum and bryophyte communities (Ellis 2015), and a contributing factor for oak (*Quercus spp*) decline (Thomas 2008, Sohar et al. 2013).

Increases in precipitation are associated with surface run off and considerable downstream infrastructure damage and crop losses via flooding (Collaku & Harrison 2002, Meyles et al. 2003, Shaller et al. 2016). The economic and social costs are significant; the UK summer floods of 2007 for example, incurred an estimated £3.2 billion in economic losses (Chatterton et al. 2010), and the wet winter of 2013/2014 between £1 - 1.5 billion (Chatterton et al. 2016). Impacts are likely to be greatest in higher elevation areas, where total precipitation is higher, soils poorer, and agricultural productivity marginal (Reed et al. 2009, Burt & Holden 2010, Short & Dwyer 2012). The exceptionally wet summer of 2012 was associated with high economic costs to UK upland agriculture; severe rumen fluke outbreak was

reported in livestock for the first time (Gordon et al. 2012). As a result, total productivity fell by 3.2%, the largest single year fall since records began in 1973 (Morison & Mathews 2016).

In the UK, the frequency of precipitation is largely determined by the position of the jet stream, pressure patterns in the NE Atlantic and the movement of extra-tropical cyclones over the North Atlantic (Lavers et al. 2013). The jet stream helps determine the position of Atmospheric Rivers (ARs), which are narrow ribbons (300km) of atmospheric vapour, transporting moisture from the tropics to mid latitudes. ARs are responsible for the majority of rainfall events in Western Europe and are connected with extreme winter precipitation and flood events in the UK (Lavers et al. 2011).

In the summer months the position of the jet stream over the UK can be predicted by spring North Atlantic sea surface temperatures (SSTs), with warm spring SSTs associated with a higher probability of wet summer weather (Osso et al. 2018). De-trended averaged North Atlantic SSTs known as the Atlantic Multi-decadal Oscillation index (AMO) naturally oscillates from positive to negative states at a periodicity of 60 years (Knudsen et al. 2011). A positive AMO is associated with more storms tracking across the Atlantic to the UK and into north western Europe, leading to wet summers in these regions (Dong et al. 2013).

Rising temperatures are projected to result in increased precipitation during existing rainfall events due to increased water holding capacity of the atmosphere, as predicted by the Clausius-Clapeyron equation (Held & Soden 2006, Rajczak & Schär 2017). On current projections, parts of SW England are expected to experience some of the greatest climate changes within the UK. South West England is set to be the first UK region to experience extreme winter rainfall associated with anthropogenic climate change (Fowler & Wilby 2010). Winter projections suggest median increases in winter precipitation of 10 to 20% in areas of the region under all climate change scenarios (RCP2.6, 4.5, 6.0, 8.5) by 2040 - 2059, according to the latest UK Met Office (UKCP18) probabilistic projections (Murphy et al. 2018). Projections are linked to expected changes in the North Atlantic winter storm track (Zappa et al. 2013) and to a greater magnitude and frequency of winter storms along Atlantic European coasts; leading to higher rainfall totals and greater winter flooding (Lavers et al. 2011, 2012, 2013, Kendon et al. 2014, Ramos et al. 2016).

Summer projections suggest median reductions of 20% to 30% in parts of the region under all climate change scenarios by 2040 - 2059 (Murphy et al. 2018), linked to positive Summer North Atlantic Oscillation (SNAO) (Belleflamme et al. 2015) and associated with increased prevalence of anti-cyclonic pressure systems and below average precipitation. High resolution (convection permitting) modelling also suggests that heavier rainfall events are likely in the summer (Kendon et al. 2014). The lowest confidence

projections are for summer precipitation (Rowell 2006, Murphy et al. 2018), particularly in ‘upland’ regions (> 300m) where seasonal variation in rainfall gradients and lapse rates challenge upland climate projections. Moreover, although upland areas cover around one third of the UK land area, they contain less than 10% of UK climate recording stations (Burt & Holden 2010).

Considering the recent release of UKCP18 land projections (Murphy et al. 2018), the importance of changes in upland precipitation and the likely use of projections in conservation and land management decisions; there is a pressing need to contextualise projected changes in seasonal precipitation with observed trends. The aim of this study was to scrutinise one of the longest running (1879 to 2012) ‘upland’ (>300m) (Cowsic river - Dartmoor National Park) and ‘lowland’ (Plymouth) precipitation records in Western Europe, alongside shorter-term records from multiple upland sites. We evaluate long term records for SW England in the context of recent model projections (Murphy et al, 2018) across two timeframes (2040 - 2069, 2070 - 2099), whilst assessing the nature and drivers of precipitation trends in this region. Results are likely to be important at a local scale within SW England, but also for upland coastal sites throughout the NE Atlantic.

2 METHODS

2.1 Climate data and quality control

Monthly precipitation totals were obtained from the UK Meteorological Office’s (UKMO) Integrated Data Archive System (MIDAS) database via the

British Atmospheric Data Centre (BADC) using the Centre for Environmental Data Analysis's (CEDA) web processing service (Met Office 2012). Climate data were also obtained directly from the UK Environment Agencies Hydrometric Archive (Environment Agency 2018) (quality controlled by the UKMO) and the UKMO National Meteorological Archive (NMA) (Met Office 2018).

Due to the long-term nature of precipitation records, stations have experienced instrumentation and locational changes over the observation periods (A1), with Plymouth and Princetown records subject to homogenization (Table 1), a potential source of inaccuracy (Zhang et al. 2014). To mitigate potential errors, all data were subject to rigorous UK Met Office on site and off site quality control procedures, these include: 1) Basic point of observation checks. 2) Input checks, ensuring values do not lie outside long-term climate extremes for the locality and time period. 3) Checks against neighbouring stations for consistency. 4) Flagged manual quality control correction. 5) Final quality control sweep to eliminate remaining gross errors (Met Office 2018). Small gaps (< 2%) in Plymouth and Princetown records were infilled using the UKMO gridded (5km) observation datasets (Hollis & McCarthy, 2017)

Table 1 - Location of weather stations used in precipitation trend analysis with time period covered. Data source: climate records as monthly precipitation totals from the UK Meteorological Office (2012, 2018), Environment Agency (2018).

Location (abbreviation)	Latitude: Longitude	Elevation	Period of record in analysis
Plymouth Mountbatten(PLY)*	50.3548: -4.1211	50m	1879 - 2015

Cowsic Valley (COW)	50.5735: -3.9861	445m	1879 - 2012
Deancombe Farm (DCF)	50.5015: -4.0058	309m	1920 - 2012
Princetown (PRT)*	50.5485: -4.0014	433m	1961 - 2015
Hurston Ridge (HRR)	50.6296: -3.8832	418m	1961 - 2015
White Ridge (WHR)	50.6256: -3.9099	488m	1961 - 2015
Double Waters (DBW)	50.5330: -4.0106	355m	1961 - 2015

**denotes use of multiple stations within same locality, use of correction factor (averaged difference between stations) for overlapping periods to minimise specific locational differences creating an homogenised record following standardised methodology (Burt & Holden, 2010).*

Seasons were divided as follows: spring (March, April, May), summer (June, July, August), autumn (September, October, November), winter (December, January*, February*), *note the winter season for the year includes December and the immediately following January and February of the following year. Annual change represents the 12 month period from March (start of spring) to February (end of winter).

2.2 Study location

Climate records come from stations located in the SW peninsula of England (SW England - approximately 50° latitude north), United Kingdom in Western Europe, an area characterised by its proximity to the North Atlantic Ocean and its temperate, largely mild, maritime oceanic climate (Perry 2014) (Figure 1). Mean temperatures typically fall between 20°C - 13°C in summer (June, July, August) and 8°C - 4°C in winter (December, January, February). Annual precipitation totals are typically close to 1000mm in lowland coastal areas of the region, but doubling in 'upland' moorland areas such as Dartmoor National Park (DNP). Six 'upland' precipitation records come from within DNP

, an area dominated by a granite plateau, which forms the highest point (621m) and largest open access area (953 km²) in southern England (Mercer 2019). One ‘lowland’ record (Plymouth) is located just outside DNP on the windward south west coast. UKCP18 twenty-five km grid cells covering stations used in the observed vs projected trend analysis were centred over latitude°: longitude° positions (climate stations): 50.439794:-4.2897746 (Plymouth), 50.670882:-3.9471840 (Cowsic Valley), 50.446188:-3.9379437 (Deancombe Farm).

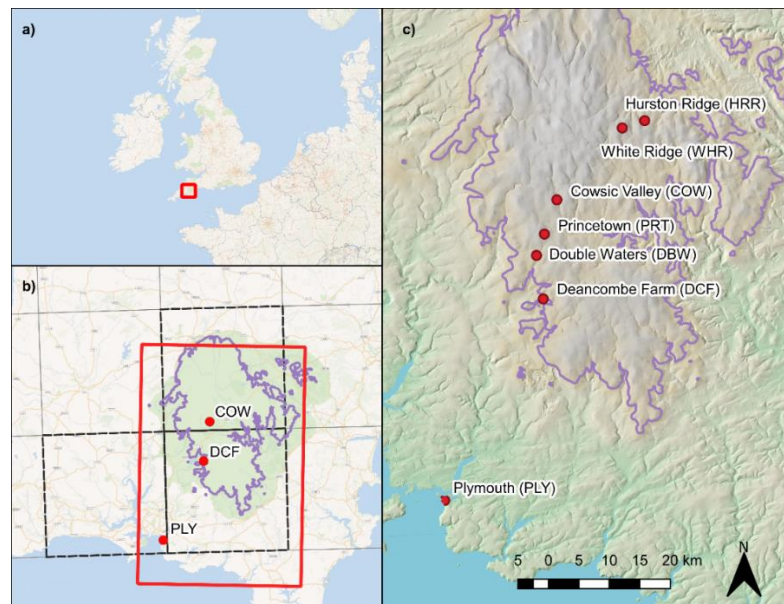


Figure 1- a) Location of study area (southwest England) within north-western Europe. b) Locations of climate observation sites and UKCP18 twenty-five km grid cells used in observed vs projected trend analysis, with 300m ‘upland’ isoline and DNP denoted in green c) Location of climate observation sites in reference to ‘upland’ isoline.

2.3 Model projections

UKMO twenty-five km, horizontal resolution probabilistic climate projections (UKCP18) (Murphy et al. 2018) were accessed via the ‘user interface’ (Lowe et al. 2018). These projections are intended to represent a useful starting point for risk assessments, aimed to represent the uncertainty consistent in existing climate models combined with internal climate variability effects (Murphy et al. 2018). Probabilistic ‘strand one’ projections, combine three PPEs (HadCM3) and twelve earth system multi-models (CMIP5) to produce broad ranges using a Bayesian statistical framework, ranges wider than those derived from multi-model information in isolation (Sexton et al. 2012a,b, Harris et al. 2013). The three-stage process: 1) integrates HadCM3 PPEs and earth system models, 2) timescales model outputs (Sexton & Harris 2015) and 3) downscales projections (Murphy et al. 2018). Our analysis makes use of a 3000 member sub-sample taken from the 10^6 members produced in stage one. This subsample was accessed for each twenty-five km grid cell covering climate stations used in the analysis and median change (%) for these grid cells was then calculated. These projections represent “emissions-driven” projections and account for uncertainties under a range of climate change scenarios (Murphy et al. 2018).

Projections show expected change (%) in monthly precipitation totals (mm) between the reference 30 year mean (1981 - 2010), and future 30 year means

for a range of future climate change scenarios represented by Representative Concentration Pathways (RCPs). Probabilistic projections are available for a range of RCPs: 2.6, 4.5, 6.0, 8.5 which represent median levels of radiative forcing (W m^{-2}) under a range of climate change scenarios resulting from different CO_2 emission pathways and associated temperature changes by 2100 (Moss et al. 2010, Van Vuuren et al 2011). RCP 2.6, 4.5, 6.0 and 8.5 scenarios are equivalent to mean increases of 1°C , 1.8°C , 2.2°C and 3.7°C in global mean surface temperature respectively compared to the 1986 - 2005 reference period by 2081 - 2100 (Stocker et al. 2013). RCP 2.6 is an emission pathway that assumes very low greenhouse gas concentration levels and represents a peak in CO_2 concentration of 490 ppm before declining by 2100 (Van Vuuren et al 2007). RCP 4.5 represents a stabilization scenario in which total radiative forcing is stabilized shortly after 2100, without overshooting the long-run radiative forcing target level, this pathway represents a peak of 650 CO_2 ppm before stabilising after 2100 (Smith & Wigley 2006, Wise et al. 2009). RCP 6.0 represents an emissions stabilization scenario with a peak of 850 CO_2 ppm before stabilising after 2100 by using a combination of technology fixes (Fujino et al. 2006; Hijioka et al. 2008). RCP 8.5 represents a scenario of high greenhouse gas concentrations with a rising radiative forcing pathway and 1370 CO_2 ppm by 2100 (Riahi et al. 2007).

2.4 Trend tables and statistical analysis

The trend of local, observed climate records was determined using linear least squares fit, a standard method for analysing climate trends (Burt & Holden 2010). Whilst the linear least squares fit method is more vulnerable to outliers than other methods in climate analysis, it is often difficult to distinguish variability from trend (Santer et al. 2000). The magnitude of any changes over the period were calculated by subtracting the period mean from the trend value for the last recorded year. Significance was determined using Mann Kendall trend test, commonly employed to detect monotonic trends in environmental and climate series data (Yue et al. 2002, Dixon et al. 2006, Pohlert 2018), due to its robustness with outliers (Kundzewicz & Robson 2004). The strength of time series trends was determined by Kendall- τ or T statistic (TAU value). Least squares fit linear regressions were used to represent trends and LOESS smoothing curves were fitted. This is a non-parametric method of local regression, suitable for data sets with outliers (Cleveland 1979) and used to measure environmental variability at multi-decadal scale (Hannaford 2013). Statistics were performed using R studio (R Core Team 2017), trend analysis and graph production packages: 'kendall' (McLeod 2011) and 'ggplot2' (Wickham 2009) respectively.

2.5 Deviation tables (observed vs projected trends)

Observed trends represent the difference between reference (1981 - 2010) and past 30 year averages as a proportion of the current total (% change) and use climate station data (Table 1). Model projections use UKCP18

probabilistic projections which define changes in precipitation (%) between reference and future 30 years averages. Observed and projected trends are compared over equivalent time-periods e.g. 60 years before and beyond the 'reference' (1981 - 2010) 30 year period. Examining the difference between the 'Trend' and 'Model Projections' forms the basis of the analysis (Figure 2), and is termed the 'deviation'.

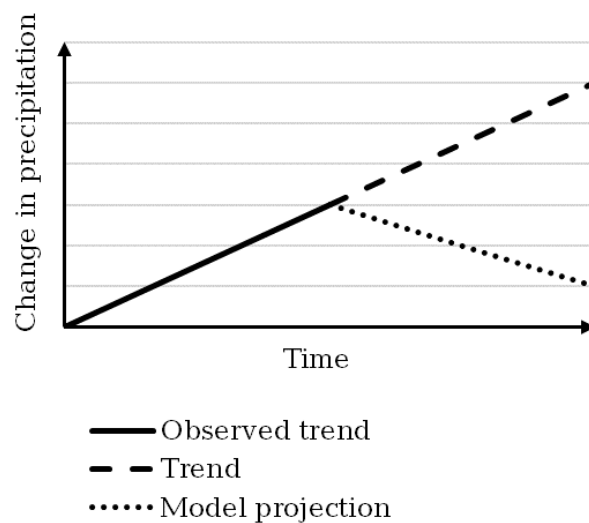


Figure 2 - Example schematic representation of the approach for comparing trends in observed data with median model projections. This example shows a positive deviation between 'Trend' from 'Model projection' as depicted by the green upwards arrow symbol ▲ in deviation tables. Trends could be higher (positive deviation) or lower (negative deviation) than model projections.

3 RESULTS

3.1 Observed trends

While there was a significant ($P \leq 0.05$) positive trend (1879 - 2012) in total annual precipitation at the Cowsic Valley station (upland) (+226mm,

+11%), there was no concomitant significant change at the lowland, Plymouth station (Figure 3, Table 2). Spring precipitation increased in both lowland (16mm, +8%) and upland (49mm, +13%) stations over the period, with greater increases at the upland station (Table 2). Although there was no significant change in summer precipitation (1879 - 2012), the lowland station showed a 3% decrease and the upland station a 4% increase (Table 2). Autumn and winter records match annual precipitation; i.e. significant precipitation increases at the upland station (autumn +12%, winter + 14%), but no significant change (1879 - 2012) at the lowland station (Table 2).

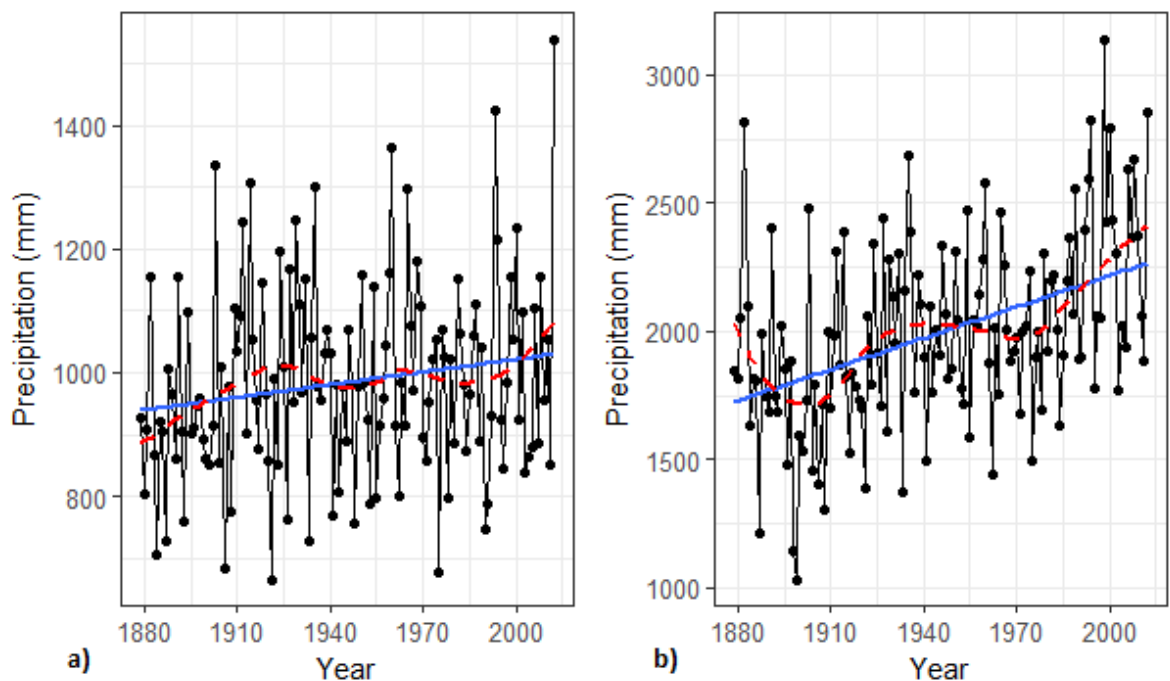


Figure 3 - Total annual precipitation recorded in a) Plymouth and b) Cowsic Valley between 1879 - 2012. *Black dots represent total annual precipitation recorded.* The blue line is the least squares fit linear trend. The red line is a LOESS (local regression) smoothing curve (span = 0.5).

Table 2 - Annual and seasonal trends in monthly precipitation totals in lowland Plymouth (PLY) and upland Cowsic Valley (COW) (Dartmoor) 1879 - 2012. Values show observed change (mm and %) from the mean, calculated

by subtracting the mean for 1879 - 2012 from the 2012 trend line (linear least squares fit). Statistically significant $P \leq 0.05$ linear trends using the seasonal Mann Kendall test are denoted in bold (* $P \leq 0.001$).

Season	Lowland		Upland	
	PLY		COW	
	mm	%	mm	%
Spring	16	8	49*	13*
Summer	-6	-3	16	4
Autumn	14	5	68	12
Winter	18	6	89	14
Annual	46	5	226*	11*

Examination of multiple upland Dartmoor stations (1961 - 2015) shows significant increases in annual precipitation at three of the four stations (Figure 4, Table 3), with only White Ridge (+167mm) marginally non-significant ($P = 0.072$). The most westerly stations, Double Waters and Princetown, experienced the steepest annual increases; 331mm (+18%) and 289.7mm (+15%) respectively. There was no change in annual precipitation over the same period (1961 - 2015) at the lowland station Plymouth (+5%, $P = 0.360$) (Table 3).

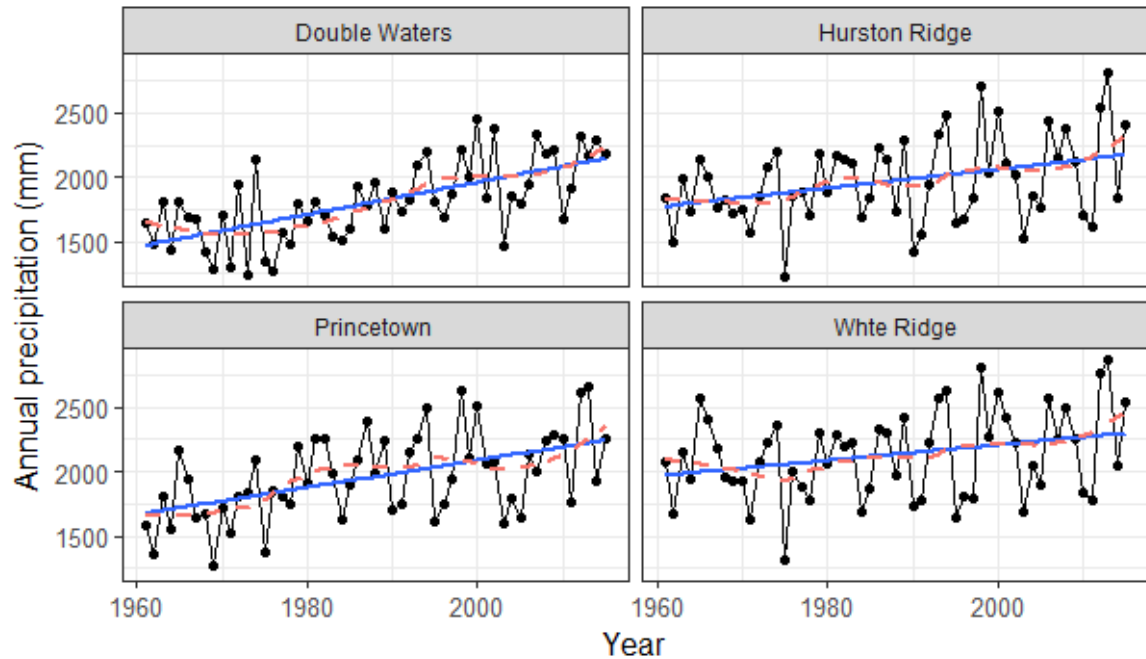


Figure 4 - Total annual precipitation recorded on upland Dartmoor stations: Double Waters, Hurston Ridge, Princetown and White Ridge between 1961 - 2015. Black dots represent total annual precipitation recorded. The blue line is the least squares fit linear trend. The red line is a LOESS (local regression) smoothing curve (span = 0.5).

Examination of seasonal changes in upland and lowland sites (1961 -2015) (Table 3) showed no significant changes in spring precipitation. While marginally non-significant, summer precipitation increased with the most western upland Dartmoor station (Double Waters) experiencing a significant increase (+83mm, +23%, $P = 0.009$). All sites had increasing precipitation in autumn and winter seasons, Double Waters and the other western upland station (Princetown) experienced significant increases ($P \leq 0.05$) in autumn (20%, 15%) and winter precipitation (21%, 17%).

Table 3 - Annual and seasonal trends in monthly precipitation totals in lowland Plymouth and upland Dartmoor stations between 1961 - 2015. PLY = Plymouth, DBW = Double waters , HRR = Hurston Ridge , PRT = Princetown , WHR = White Ridge .Values show observed change (mm and % change) from the mean, calculated by subtracting the mean for 1961 - 2015 from the 2012 trend (linear least squares fit). Statistically significant $P \leq 0.05$ linear trends using the seasonal Mann Kendall test are denoted in bold (* $P \leq 0.001$).

Season	Lowland				Upland					
	PLY		DBW		HRR		PRT		WHR	
	mm	%	mm	%	mm	%	mm	%	mm	%
Spring	-11	-5	21	6	-6	-2	26	7	-15	-4
Summer	26	14	83	23	40	13	75	19	47	13
Autumn	22	8	106*	20*	56	10	81	15	49	8
Winter	18	6	121*	21*	98	14	106	17	85	11
Annual	52	5	331*	18*	208	11	290*	15*	167	8

3.2 Observed vs projected trends

The interquartile range (IQR) of UKCP18 twenty-five km projections for the 2040 - 2069 period (Table 4) suggests the season with the greatest variability around the median is summer, with reductions in mean total precipitation of between 34% - 11% and 32% - 10% for grids covering lowland and upland stations respectively. Spring, autumn and winter seasons had a much lower variability, suggesting higher confidence than summer projections with moderate decreases in spring and increases in autumn precipitation by the 2040 - 2069. Winter projections suggest increases of between 2 - 18% increase in rainfall across locations and climate change scenarios.

Table 4 - IQR of projected changes (UKCP18 - 25km resolution) in average seasonal precipitation totals (%) by 2040 - 2069 for one 'lowland' (Plymouth) and two 'upland' locations (Cowsic Valley, Deacombe Farm). PLY = Plymouth, Cowsic Valley = COW, Deancombe Farm = DCF. The IQR shows the middle 50% of projected changes between reference 30yr average (1981 - 2010) and future average 60 years ahead or by 2040 - 2069 under RCP 2.6, 4.5 climate change scenarios. Projected data cover three 25km grid cells covering each station: Plymouth (50.439794:-4.2897746), Cowsic Valley (50.670882: -3.9471840), Deancombe Farm (50.446188:-3.9379437). ▲ denotes an increase, ▼ a decrease in precipitation totals.

Season	Lowland		Upland			
	PLY		COW		DCF	
	RCP 2.6	RCP 4.5	RCP 2.6	RCP 4.5	RCP 2.6	RCP 4.5
Spring	▼12 - 0	▼11-▲1	▼11 -▲1	▼11 -▼2	▼11 -▼1	▼11 -▲1
Summer	▼31-▼9	▼34 -▼11	▼28 -▼8	▼32 -▼10	▼29 -▼8	▼32 -▼10
Autumn	▼2 -▲8	▼1 -▲9	▼2 -▲8	▼1-▲9	▼2 -▲9	▼1 -▲9
Winter	▲2 -▲15	▲2 -▲16	▲1 -▲12	▲2 -▲13	▲2 -▲16	▲3 -▲18
Annual	▼2 -▲3	▼2 -▲3	▼2 -▲1	▼2 -▲1	▼1 -▲3	▼1 -▲4

Deviation tables for 2040 - 2069 (Table 5) show that spring and summer yield the highest deviation between observed and median projected precipitation under both RCP 2.6 and 4.5 climate change scenarios, especially for upland locations (circa 24% for both seasons at Cowsic Valley). Autumn and winter projections whilst not completely consistent, suggest increases but with lower anomalies. Projections for lowland Plymouth in autumn are most consistent with observations.

Table 5 - Deviation between 'observed' and median 'projected' (UKCP18 - 25km resolution) changes (%) in average annual and seasonal precipitation totals by the 2050s for lowland and upland locations (observed change (%) - projected change (%)).

Observed changes use climate records from one 'lowland' (Plymouth) and two 'upland' stations (Cowsic Valley, Deabcombe Farm) and refer to recorded changes in mean total seasonal precipitation between the reference 30yr average (1981 - 2010) and the 30yr average 60 years previously (1920 - 1949) (reference - past). 'Projected' changes represent median difference between reference 30yr average (1981 - 2010) and future average 60 years ahead or by 2040 - 2069 under RCP 2.6 and 4.5 climate change scenarios. ▲ denotes a positive, ▼ a negative anomaly between observed - projected changes.

Lowland	Upland
---------	--------

Season	PLY		COW		DCF	
	RCP 2.6	RCP 4.5	RCP 2.6	RCP 4.5	RCP 2.6	RCP 4.5
Spring	▲ 17	▲ 17	▲ 24	▲ 24	▲ 23	▲ 23
Summer	▲ 19	▲ 21	▲ 22	▲ 24	▲ 20	▲ 22
Autumn	0	▼ 1	▲ 12	▲ 11	▲ 8	▲ 7
Winter	▼ 7	▼ 8	▲ 9	▲ 8	▼ 3	▼ 4
Annual	▲ 3	▲ 3	▲ 14	▲ 13	▲ 8	▲ 8

In common with 2040 - 2069 projections, the IQR of projections for 2070 - 2099 scenarios (Table 6) suggests the season with the greatest variability is summer. Reductions in total mean precipitation of 10 - 42% and 10 - 39% are projected in lowland and upland areas respectively between 2070 - 2099 under RCP 2.6 and 4.5 climate change scenarios. There is lower variability around for spring, autumn and winter seasons with moderate decreases projected for spring and moderate increases for autumn precipitation totals. The range of projections for winter suggest increases in total precipitation of between 3 - 26% across locations and emissions scenarios.

Table 6 - IQR of projected changes (UKCP18 - 25km resolution) in average seasonal precipitation totals (%) by 2070 - 2099 for one 'lowland' (Plymouth) and one 'upland' location (Cowsic Valley). Details as for Table 4, but refers to 2070 - 2099.

Season	Lowland		Upland	
	PLY		COW	
	RCP 2.6	RCP 4.5	RCP 2.6	RCP 4.5
Spring	▼ 9 - ▲ 2	▼ 9 - ▲ 2	▼ 9 - ▲ 1	▼ 9 - ▲ 1
Summer	▼ 36 - ▼ 10	▼ 42 - ▼ 14	▼ 33 - ▼ 10	▼ 39 - ▼ 14

Autumn	▼1 - ▲8	0 - ▲10	▼1 - ▲7	▼1 - ▲8
Winter	▲5 - ▲8	▲9 - ▲26	▲3 - ▲14	▲6 - ▲20
Annual	0 - ▲4	0 - ▲5	▼2 - ▲3	▼2 - ▲3

Deviation tables for 2070 - 2099 projections (Table 7) suggest spring, summer and autumn are the seasons with the greatest divergence between observations and latest UKCP18 projections, with divergence higher at the upland (Cowsic Valley) than the lowland site (Plymouth). Deviation is as high as 30%, 33% and 31% for spring summer and autumn respectively under RCP 4.5 for 2070 - 2099 in upland sites compared to 15%, 18% and 9% in the lowlands. Median projections for winter precipitation change are more consistent with observations than other seasons, but while observations are above projected trajectories for the upland location, they fall below for the lowland site. The seasonal difference between the upland and lowland sites means that although annual precipitation deviation between observations and projections is negligible for the lowland site (+ 1%) under both emissions scenarios, it is considerable for upland Cowsic Valley (+ 24%).

Table 7 - Deviation between 'observed' and median 'projected' (UKCP18 - 25km resolution) changes (%) in average annual and seasonal precipitation totals by 2070 - 2099 for lowland and upland locations (observed change (%) - projected change (%)).

Details as for Table 5, but refers to 2070 - 2099. Observed changes use climate records from one 'lowland' (Plymouth) and one 'upland' station (Cowsic Valley). DCF is outside the time-period of analysis.

Season	Lowland		Upland	
	PLY		COW	
	RCP 2.6	RCP 4.5	RCP 2.6	RCP 4.5

Spring	▲ 15	▲ 15	▲ 30	▲ 30
Summer	▲ 14	▲ 18	▲ 30	▲ 33
Autumn	▲ 9	▲ 9	▲ 32	▲ 31
Winter	▼ 12	▼ 18	▲ 15	▲ 10
<hr/>				
Annual	▲ 1	▲ 1	▲ 24	▲ 24

4 DISCUSSION

Long term (>130 years) precipitation records from SW England evidence significant anthropogenic forcing, which is more pronounced in upland sites (Figure 2, Table 2). Our study is fortunate to use one of the longest pair of upland and lowland precipitation records in Western Europe and the dependence of seasonal trends on the time-period analysed (Table 2, 3), highlights the importance of long-term climate observations (Burt & Holden 2010). The differences between time-periods underscore the difficulty of linking shorter term (<50 years) climate records to anthropogenic climate change, as trends may be confounded by natural multi-decadal atmospheric and/or oceanic cycles (Parker et al. 2007, Bindoff et al. 2013).

Elevated autumn, winter and annual precipitation trends in the UK uplands (Figure 3, Table 2, 3) have previously been linked to a ‘double orographic enhancement’, associated with positive North Atlantic Oscillation (+NAO), linked to stronger maritime airflow and high atmospheric moisture content (Burt & Holden 2010, Burt & Howden 2013). Upland sites experience enhanced precipitation via susceptibility to the ‘seeder-feeder’ process, which involves

raindrops in upper level clouds washing out droplets within lower level 'feeder' clouds, which form over hills, producing higher rainfall intensities (Bergeron 1965, Hill et al. 1981, Lee et al. 2000). Other mechanisms can occur through primary (sea salt and other organics) and secondary (ocean released dimethyl-sulphide) marine aerosols, which can drive cloud formation and increase Cloud Condensation Nuclei (CCN) (Hudson et al. 2011, Ovadnevaite et al. 2011, Sanchez et al. 2018). Therefore, while the 'double orographic enhancement' has been linked to +NAO associated with periods of maritime weather and south-westerly winds (Burt & Howden 2013, Burningham & French 2013), it is perhaps interaction between the seeder-feeder process and oceanic derived CCN that underpins the mechanism of increased upland precipitation change. This interaction would become stronger during +NAO and could explain enhanced precipitation noted for west coast UK upland sites (Burt & Howden 2013). Observed precipitation trends in upland, windward stations (Figure 4, Table 3) may reflect this process, and explain recorded amplification of the rain-shadow effect by +NAO (Burt & Howden 2013).

A better understanding of the interaction between oceanic-atmospheric processes and upland climate mechanisms is therefore important for accurately modelling future climate changes for upland sites in the NE Atlantic and other oceanic influenced upland regions. The sensitivity of upland precipitation to atmospheric and oceanic cycles may additionally

have important implications for understanding the ecological dynamics, conservation priorities, and planning for effective climate mitigation in these areas (Morecroft et al. 2009, Bocket et al. 2019, Lunt et al. 2019).

Records of seasonal precipitation from upland SW England suggest significant divergence between observed trends and recently released UKMO climate projections. Although increases in winter precipitation are broadly consistent with a range of climate model scenarios; records for spring, summer and autumn precipitation show no signs of projected drying (Murphy et al. 2018), with deviation greatest in upland locations.

Using observed changes in precipitation to infer confidence in projected changes has its limitations, namely the uncertainty of future emissions pathways (many of which are non-linear); our methods did not explicitly seek to determine model validity as climate models consider many and varied processes when generated. There are considerable limitations in downscaling projections to the scale used in this study; however, projections for grid cells used, reflect their intended application as a useful starting point for risk assessments and to represent the uncertainty present in existing climate models (Murphy et al. 2018). We felt it was vital to contextualise projected trends (Figure 2) considering the likely applicability of these projections in land management decisions, particularly when projected changes in future precipitation are so variable and the range of outcomes high (Murphy et al. 2018). Our timeframes for comparison (60 and 90 years) were chosen to avoid

being confounded by natural cycles such as AMO and NAO, but this restricted the number of suitable stations. We used RCP 2.6 and RCP 4.5 climate change scenarios in our analysis as these are the most conservative RCPs, which we judged more suitable for comparison. Probabilistic projections for RCPs 6.0 and 8.5 climate change scenarios show similar deviation to observed trends seen for RCP 2.6 and 4.5 (A2, A3) but with elevated magnitude in these more extreme climate change scenarios.

There is presently considerable interest focussed on understanding ecological patterns and process within the context of climate projection data (Parmesan & Hanley 2015, Suggit et al. 2017, Smith et al. 2018). Our results highlight the need for caution when examining the future response of upland organisms and ecosystems to projected changes in growing season precipitation totals and that ecologists must actively explore uncertainty in all aspects of climate data before making inferences about biological response (Suggit et al. 2017).

This uncertainty is greatest in summer (Murphy et al. 2018), as drying is predicated on large scale changes in the placement of anti-cyclonic pressure systems (Belleflamme et al. 2015), linked to a natural downturn of the Atlantic Sea Surface temperatures (SSTs), yet confidence levels for these large scale changes is relatively low (Rowell & Jones 2006). The emergence of an Atlantic SST tri-pole pattern and an enhanced meridional SST gradient could lead to increased storminess in the Atlantic, associated with intensifying

atmospheric baroclinicity (Frajka-Williams et al. 2017). It is interesting to note that without a changed position of anti-cyclonic systems in the North Atlantic, blocking flow from the Atlantic Ocean, some models (HadAM3PEur) project a net increase in rainfall in the UK and Scandinavia due to the enhanced moisture content of the warmer atmosphere (Rowell & Jones 2006).

Other uncertainties in summer precipitation rest on the uncertain influence of variations in local SSTs on evaporation behaviour (Long & Xie 2015), the downscaling of regional and global models (Rowell 2006), and the large observed seasonal variation in lapse rates (Holden & Rose 2011, Burt & Howden 2013). Consequently, changes in short duration (sub daily) summer events are unclear as projections are less reliable at these scales (Fowler et al. 2007). Improvements in the accuracy of summer projections may be available with the use of 'convection permitting' models, run at high resolution (<5km) to project more localised high impact rainfall events (Kendon et al. 2014, Kendon et al. 2017).

Recent increases in summer precipitation (Table 3) coincide with a move from the negative to the positive phase of the AMO and are supported by long-term UK river flow monitoring data, that show no reduction in summer flow rates (Hannaford 2013). Given the evidenced influence of SSTs on summer precipitation (Dong et al. 2013, Osso et al. 2017) and pressure patterns (Belleflamme et al. 2015), future interaction between natural AMO and background anthropogenic SST warming is likely to prove important. This

interaction could be influential in determining the temporal and spatial pattern of future precipitation trends in SW England and more widely for NW European upland coastal sites.

Winter projections are more robust, associated with enhanced atmospheric water vapour content and increased precipitation (Held & Soden 2006, Schaller et al. 2016). Atmospheric Rivers (ARs) are expected to increase in strength and frequency in the UK and Europe wide under multiple global climate model (GCMs) simulations, resulting in heavier precipitation and greater flood risk (Lavers et al. 2013, Ramos et al. 2016). Precipitation observations support other records from paired upland and lowland sites and highlight that upland locations are particularly sensitive to recent changes in climate (Burt & Holden 2010, Burt & Ferranti 2012). Our study provides support for local winter projections (Murphy et al. 2018), underlines the significant potential for future winter flood risk and suggests the damaging floods experienced in the UK between 2007 - 2015 may have set a precedent for future changes.

Our results signpost significant increases in spring, autumn, winter and annual precipitation for upland SW England between 1879 and 2012. Moderate increases in summer precipitation represent a deviation from the drier summers predicted with current and previous climate models. Deviation between observed and projected precipitation trends were greatest in upland locations. Taken together, our results highlight the uncertainty

between predicted and observed climate trends, particularly for summer precipitation totals and evidence the need for caution when making assumptions on climate impacts based solely on predictive models (Parmesan et al. 2018). We highlight also the value of long term upland climate monitoring and the importance of model projections at appropriate spatial scales (Watts et al. 2015) to better enable policy makers and practitioners to deliver ‘future proofed’ decisions for the delivery of multiple ecosystem services in the uplands of NW Europe (Reed et al. 2013, Brown & Everard 2015).

Acknowledgements. We thank the UK Environment Agency (UK) for funding for this study as part of the Dartmoor Headwaters Pilot Project. We are also grateful to the UK Meteorological Office for providing access to the precipitation records via the British Atmospheric Data Centre (BADC), Centre for Environmental Data Analysis (CEDA) and the National Meteorological Archive (NMA) (Exeter, UK).

LITERATURE CITED

- Belleflamme A, Fettweis X, and Michel Erpicum M (2015) Do global warming-induced circulation pattern changes affect temperature and precipitation over Europe during summer? *Int J Climatol* 35: 1484-1499.
- Bergeron T (1965) On the low-level redistribution of atmospheric water caused by orography. In: *Proceedings of the International Conference on Cloud Physics, Tokyo and Sapporo-shi, Japan, 24 May–1 June 1965*, p 96-100.

- Bindoff NL, Stott PA, AchutaRao KM, Allen MR, Gillett N, Gutzler D, Hansingo K, Hegerl G, Hu Y, Jain S, Mokhov II, Overland J, Perlwitz J, Sebbari R, Zhang X (2013) Detection and Attribution of Climate Change: from Global to Regional. In: Stocker TF, Qin D, Plattner G-K, Tignor M, Allen SK, Boschung J, Nauels A, Xia Y, Bex V, Midgley PM (eds) *Climate Change: The Physical Science Basis. Contribution of Working Group I to the Fifth Assessment Report of the Intergovernmental Panel on Climate Change*. Cambridge University Press, Cambridge, United Kingdom and New York, NY, USA.
- Bradley RI, Milne R, Bell J, Lilly A, Jordan C, Higgins A (2005) A soil carbon and land use database for the United Kingdom. *Soil Use Manage* 21: 363-369.
- Brockett BFT, Browne AL, Beanland A, Whitfield MG, Watson N, Blackburn GA, Bardgett RD (2019) Guiding carbon farming using interdisciplinary mixed methods mapping. *People and Nature* 1: 191-203.
- Brown I, Everard M (2015) A working typology of response options to manage environmental change and their scope for complementarity using an Ecosystem Approach. *Environ Sci Policy* 52: 61-73.
- Burt TP, Holden J (2010) Changing temperature and rainfall gradients in British Uplands. *Clim Res* 45: 57-70.
- Burningham H, French J (2013) Is the NAO winter index a reliable proxy for wind climate and storminess in northwest Europe? *Int J Climatol* 33: 2036-2049.
- Burt TP, Ferranti EJS (2012) Changing patterns of heavy rainfall in upland areas: a case study from northern England. *Int J Climatol* 32: 518-532.
- Burt TP, Howden NJK (2013) North Atlantic Oscillation amplifies orographic precipitation and river flow in upland Britain. *Water Resour Res* 49: 3504-3515.
- Chatterton J, Viavattene C, Morris J, Penning-Roswell E, Tapsell S (2010) The costs of the summer 2007 floods in England. Delivering benefits through evidence. Project: SC070039/R1. Environment Agency, Rio House, Bristol, UK.

- Chatterton J, Clarke C, Daly E, Dawks S and others (2016) The costs and impacts of the winter 2013 to 2014 floods. Project: SC140025/R2. Environment Agency, Horizon House, Bristol, UK.
- Cleveland WS (1979) Robust locally-weighted regression and smoothing scatterplots. *J Am Stat Assoc* 74: 829-836.
- Collaku A, Harrison S.A (2002) Losses in wheat due to waterlogging. *Crop Sci* 42: 444-450.
- Collins L, Bradstock RA, Resco de Dios V, Duursma RA, Velasco S, Boer MM (2018) Understorey productivity in temperate grassy woodland responds to soil water availability but not to elevated [CO₂]. *Glob Change Biol* 24: 2366-2376.
- Cowles J, Boldgiv, Liancourt P, Petraitis PS, Casper BB (2018) Effects of increased temperature on plant communities depend on landscape location and precipitation. *Ecol. Evol* 8: 5267-5278.
- Clark J, Gallego-Sala A, Allott T, Chapman S and others (2010) Assessing the vulnerability of blanket peat to climate change using an ensemble of statistical bioclimatic envelope models. *Clim Res* 45: 131-150.
- Curtis CJ, Battarbee RW, Monteith DT, Shilland EM (2014) The future of upland water ecosystems of the UK in the 21st century: A synthesis. *Ecol Indic* 37: 412-430.
- Dixon H, Lawler D.M, Shamseldin AY(2006) Streamflow trends in western Britain. *Geophys Res Lett* 33: L19406. DOI: 10.1029/2006GL027325.
- DNPA (Dartmoor National Park Authority) (2019) Dartmoor Delivery Plan for Ring Ouzel. www.dartmoor.gov.uk (accessed 3 May 2019).
- Dong B, Sutton RT, Woollings T, Hodges K (2013) Variability of the North Atlantic summer storm track: mechanisms and impacts on European climate. *Environ Res Lett* 8: 034037. DOI: 10.1088/1748-9326/8/3/034037.
- Ellis C (2015) Biodiversity Climate change impacts report card technical paper 8: Implications of climate change for UK bryophytes and lichens. Natural Environment Research Council (NERC).
- Environment Agency (2018) Hydrometric Archive. Manley House, Exeter, UK.

- Fowler HJ, Ekström M, Blenkinsop S, Smith AP (2007) Estimating change in extreme European precipitation using a multimodel ensemble. *J Geophys Res* 112: D18104. DOI: 10.1029/2007JD008619.
- Fowler HJ, Wilby RL (2010) Detecting changes in seasonal precipitation extremes using regional climate model projections: Implications for managing fluvial flood risk. *Water Resour Res* 46: W03525. DOI: 10.1029/2008WR007636.
- Frajka-Williams E, Claudie B, Duche A (2017) Emerging negative Atlantic Multidecadal Oscillation index in spite of warm subtropics. *Sci Rep* 7: 11224. DOI: 10.1038/s41598-017-11046-x.
- Fujino J, Nair R, Kainuma M, Masui T, Matsuoka Y (2006) Multigas mitigation analysis on stabilization scenarios using aim global model. *Energy J*, Special issue 3: 343-354.
- Gordon D, Zadoks R, Skuce P, Sargison N (2012) Confirmation of triclabendazole resistance in liver fluke in the UK. *Vet Rec* 171: 159-160.
- Harris GR, Sexton DMH, Booth BBB, Collins M, Murphy JM (2013) Probabilistic projections of transient climate change. *Clim Dyn* 40: 2937-2972.
- Hannaford J (2013) A climate change report card for water. Working Technical Paper. Observed long-term changes in UK river flow patterns: a review. National River Flow Archive. Centre for Ecology and Hydrology, Maclean Building, Wallingford, Oxfordshire, UK.
- Held IM, Soden BJ (2006) Robust responses of the hydrological cycle to global warming. *J Clim* 19: 5686-5699.
- Hijioka Y, Matsuoka Y, Nishimoto H, Masui T, Kainuma M (2008) Global GHG emission scenarios under GHG concentration stabilization targets. *J Glob Environ Eng* 13: 97-108.
- Hill FF, Browning KA, Bader MJ (1981) Radar and raingauge observations of orographic rainfall over South Wales. *Q J R Meteorol Soc* 107: 643-670.
- Holden J, Shotbolt L, Bonn A, Burt TP and others (2007) Environmental change in moorland landscapes. *Earth Sci Rev* 82: 75-100.

- Holden J, Rose R (2011) Temperature and surface lapse rate change: a study of the UK's longest upland instrumental record. *Int J Climatol* 31: 907-919.
- Hollis D, McCarthy M (2017) UKCP09: Met Office gridded and regional land surface climate observation datasets. Centre for Environmental Data Analysis.
- Hudson JG, Noble S, Jha V (2011) On the relative role of sea salt cloud condensation nuclei (CCN). *J Atmos Chem* 68: 71-88.
- JNCC (2019) SAC interest features. jncc.defra.gov.uk (accessed 3 May 2019).
- Kendon E.J, Roberts N.M, Fowler H.J, Roberts M.J, Chan S.C, Senior C.A (2014) Heavier summer downpours with climate change revealed by weather forecast resolution model. *Nat Clim Change* 4: 570-576.
- Kendon EJ, Ban N, Roberts NM, Fowler HJ and others (2017) Do convection-permitting regional climate models improve projections of future precipitation change? *Bull Am Meteorol Soc* 98: 79-93.
- Knudsen M.F, Seidenkrantz M-S, Jacobsen B.H, Kuijpers A (2011) Tracking the Atlantic Multidecadal Oscillation through the last 8000 years. *Nat Commun* 2: 1-8.
- Kundzewicz, ZW, Robson AJ (2004) Change detection in hydrological records - A review of the methodology. *Hydrol Sci J* 49: 7-19.
- Lamacraft D, Smith A, Wilkins T, McCarthy B and others (2018) Plantlife, bryophytes of Atlantic woodland in south west England: a handbook for managers. Acanthus Press, Somerset, UK.
- Lavers DA, Allan RP, Villarini G, Lloyd-Hughes B, Brayshaw DJ, Wade AJ (2013) Future changes in atmospheric rivers and their implications for winter flooding in Britain. *Environ Res Lett* 8: 034010. DOI: 10.1088/1748-9326/8/3/034010.
- Lavers DA, Villarini G, Allan RP, Wood EF, Wade AJ (2012) The detection of atmospheric rivers in atmospheric reanalyses and their links to British winter floods and the large-scale climatic circulation. *J Geophys Res* 117: D20106. DOI: 10.1029/2012JD018027.

- Lavers DA, Allan RP, Wood EF, Villarini G, Brayshaw DJ, Wade AJ (2011) Winter floods in Britain are connected to atmospheric rivers. *Geophys Res Lett* 38: L23803. DOI: 10.1029/2011GL049783.
- Lee DS, Kingdon RD, Garland JA, Jones BMR (2000) Parametrisation of the orographic enhancement of precipitation and deposition in a long-term, long-range transport model. *Annales Geophysicae* 18: 1447-1466.
- Le Roux PC, Aalto J, Luoto M (2013) Soil moisture's underestimated role in climate change impact modelling in low-energy systems. *Glob Change Biol* 19: 2965-2975.
- Long S-M, Xie S-P (2015) Intermodel variations in projected precipitation change over the North Atlantic: Sea surface temperature effect. *Geophys Res Lett* 42: 4158-4165.
- Lowe JA, Bernie D, Bett P, Bricheno L and others (2018) UKCP18 Science Overview report. Met Office, Exeter, UK.
- Lunt PH, Fyfe RM, Tappin AD (2019) Role of recent climate change on carbon sequestration in peatland systems. *Sci Total Environ* 667: 348-358.
- McLeod AI (2011) Kendall: Kendall rank correlation and Mann-Kendall trend test. R package version 2.2.
- Mercer I (2009) Dartmoor: a statement of its time. Harper Collins Publishers, 77-85 Fulham Palace Road, London, UK.
- Met Office (2012) Met Office Integrated Data Archive System (MIDAS) Land and Marine Surface Stations Data (1853-current). NCAS British Atmospheric Data Centre.
- Met Office (2018) National Meteorological Archive (NMA). Great Moor House, Sowton Industrial Estate, Exeter, UK.
- Meyles E, Williams A, Ternan L, Dowd J (2003) Runoff generation in relation to soil moisture patterns in a small Dartmoor catchment, Southwest England. *Hydrol Processes* 17: 251-264.
- Morecroft MD, Bealey CE, Beaumont DA, Benham S and others (2009) The UK Environmental Change Network: Emerging trends in the composition of plant and animal communities and the physical environment. *Biol Conserv* 142: 2814-2832.

- Morison JIL, Matthews RB (eds.) (2016) Agriculture and Forestry Climate Change Impacts Summary Report, Living With Environmental Change.
- Moss RH, Edmonds JA, Hibbard KA, Manning MR and others (2010) The next generation of scenarios for climate change research and assessment. *Nature* 463: 747-756.
- Murphy JM, Harris GR, Sexton DMH, Kendon EJ and others (2018) UKCP18 Land Projections: Science Report. Met Office, Exeter, UK.
- Osso A, Sutton R, Shaffrey L, Dong B (2018) Observational evidence of European summer weather patterns predictable from spring. *Proc Natl Acad Sci USA* 115: 59-63.
- Ovadnevaite J, Ceburnis D, Martucci G, Bialek J and others (2011) Primary marine organic aerosol: A dichotomy of low hygroscopicity and high CCN activity. *Geophysical Research Letters* 38: L21806. DOI:10.1029/2011GL048869.
- Parker D, Folland C, Scaife A, Knight J, Colman A, Baines P, Dong B (2007) Decadal to multidecadal variability and the climate change background. *J Geophys Res* 112: D18115. DOI:10.1029/2007JD008411.
- Parmesan C & Hanley ME (2015) Plants and climate change: complexities and surprises. *Annals of Botany* 115: 849-864.
- Parmesan C, Hanley ME, Singer MC (2018) Models vs. local data to predict crop losses. *Science* 362: 1122.
- Perry AH (2014) Regional Weather and Climates of the British Isles - Part 8: South West England and the Channel Islands. *Weather* 69: 208-212.
- Pohlert T (2018) Non-Parametric Trend Tests and Change-Point Detection. R package version 1.1.1 R package = "Trend".
- Rajczak J, Schär C (2017) Projections of Future Precipitation Extremes Over Europe: A Multimodel Assessment of Climate Simulations. *J Geophys Res* 122: 773-800.
- Ramos AM, Tomé R, Trigo RM, Liberato MLR, Pinto JG (2016) Projected changes in atmospheric rivers affecting Europe in CMIP5 models. *Geophys Res Lett* 43: 9315-9323.

- R Core Team (2017) R: A language and environment for statistical computing. R Foundation for Statistical Computing, Vienna, Austria.
- Reed MS, Bonn A, Slee W, Beharry-Borg N and others (2009) The future of the uplands. *Land Use Policy* 26: 204-216.
- Riahi K, Grübler A, Nakicenovic N (2007) Scenarios of long-term socio-economic and environmental development under climate stabilization. *Technol Forecast Soc Chang* 74: 887-935.
- Rowell DP (2006) A demonstration of the uncertainty in projections of UK climate change resulting from regional model formulation. *Clim Change* 79: 243-257.
- Rowell DP, Jones RG (2006) Causes and uncertainty of future summer drying over Europe. *Clim Dyn* 27: 281-299.
- Sanchez KJ, Chen C-L, Russell LM, Betha R and others (2018) Substantial Seasonal Contribution of Observed Biogenic Sulfate Particles to Cloud Condensation Nuclei. *Scientific Reports* 8: 2045-2322.
- Santer BD, Wigley TML, Boyle JS, Gaffen DJ and others (2000) Statistical significance of trends and trend differences in layer-average atmospheric temperature time series. *J Geophys Res* 105: 7337-7356.
- Schaller N, Kay AL, Lamb R, Massey NR and others (2016) Human influence on climate in the 2014 southern England winter floods and their impacts. *Nat Clim Change* 6: 627-634.
- Sexton DMH, Murphy JM, Collins M, Webb MJ (2012a) Multivariate prediction using imperfect climate models part I: outline of methodology. *Clim Dyn* 38: 2513-2542.
- Sexton DMH, Murphy JM (2012b) Multivariate prediction using imperfect climate models part II: robustness of methodological choices and consequences for climate sensitivity. *Clim Dyn* 38: 2543-2558.
- Sexton DMH, Harris GR (2015) The importance of including variability in climate change projections used for adaptation. *Nature. Clim Change* 5: 931-936.
- Short CJ, Dwyer J (2012) Reconciling pastoral agriculture and nature conservation: developing a co-management approach in the English uplands. *Pastoralism: Res, Pol & Pract* 2: 13.

- Sohar K, Helama S, Läänelaid A, Raisio J, Tuomenvirta H (2013) Oak decline in a southern Finnish forest as affected by a drought sequence. *Geochronometria* 41: 92-103.
- Smith P, Price J, Molotoks A, Warren R, Malhi Y (2018) Impacts on terrestrial biodiversity of moving from a 2°C to a 1.5°C target. *Philos. Trans. Royal Soc. A* 376: 20160456. DOI: 10.1098/rsta.2016.0456.
- Smith SJ, Wigley TML (2006) MultiGas forcing stabilization with minicam. *Energy J*, Special issue 3: 373-392.
- Stocker TF, Qin D, Plattner G-K, Alexander LV and others (2013) Technical Summary. In: Stocker TF, Qin D, Plattner G-K, Tignor M and others (eds) *Climate Change: The Physical Science Basis. Contribution of Working Group I to the Fifth Assessment Report of the Intergovernmental Panel on Climate Change*. Cambridge University Press, Cambridge, United Kingdom and New York, NY, USA.
- Suggitt AJ, Platts PJ, Barata IM, Bennie JJ and others (2017) Conducting robust ecological analyses with climate data. *Oikos* 000: 001-009.
- Thomas FM (2008) Recent advances in cause-effect research on oak decline in Europe. *CAB Rev: Perspectives in Agriculture, Veterinary Science, Nutrition and Natural Resources* 3: 1-12.
- Van der Wal R, Bonn A, Monteith D, Reed M and others (2011) Mountains, moorlands and heaths. In: *UK National Ecosystem Assessment: Technical Report*. United Nations Environment Programme World Conservation Monitoring Centre: Cambridge, 105-159.
- Van Vuuren DP, Den Elzen MGJ, Lucas PL, Eickhout B and others (2007) Stabilizing greenhouse gas concentrations at low levels: an assessment of reduction strategies and costs. *Clim Chang* 81: 119-159.
- Van Vuuren DP, Edmonds J, Kainuma M, Riahi K and others (2011) The representative concentration pathways: an overview. *Clim Change* 109: 5-31.
- Walck JL, Hidayati SN, Dixon KW, Thompson K, Poschlod P (2011) Climate change and plant regeneration from seed. *Glob Change Biol* 17: 2145-2161.

- Watts G, Battarbee RW, Bloomfield JP, Crossman J and others (2015) Climate change and water in the UK - past changes and future prospects. *Prog Phys Geogr* 39: 6-28.
- Wickham H (2009) *ggplot2: Elegant Graphics for Data Analysis*. Springer-Verlag, New York.
- Wise M, Calvin K, Thomson A, Clarke L, Bond-Lamberty B, Sands R, Smith SJ, Janetos A, Edmonds J (2009) Implications of limiting CO₂ concentrations for land use and energy. *Science* 324: 1183-1186.
- Yue S, Pilon P, Cavadias G (2002) Power of the Mann-Kendall and Spearman's rho tests for detecting monotonic trends in hydrological series. *J Hydrol* 259: 254-271.
- Zappa G, Shaffrey LC, Hodges KI, Sansom PG, Stephenson DB (2013) A multi-model assessment of future projections of North Atlantic and European extratropical cyclones in the CMIP5 climate models. *American Meteorological Society. J Clim* 26: 5846-5862.
- Zhang L, Ren GY, Ren YY, Zhang AY, Chu ZY, Zhou YQ (2014) Effect of data homogenization on estimate of temperature trend: a case of Huairou station in Beijing Municipality. *Theor Appl Climatol* 115: 365-373.

Appendices

A1 - Changes in the location and instrumentation of weather stations used in trend analysis. Details of weather stations was obtained from the National Meteorological Archive (Met Office, 2018).

Climate record	Change	Date
PLY	Location and instrumentation	1940
COW	Instrumentation	1991
DCF	Instrumentation	1961
PRT	Location and instrumentation	2009
HRR	No change	-
WHR	No change	-
DBW	No change	-

A2 - Deviation between 'observed' and median 'projected' (UKCP18 - 25km resolution) changes (%) in average annual and seasonal precipitation totals by 2040 - 2069 for lowland and upland locations (observed change (%) - projected change (%)). Details as for Table 5, but refers to 2070 - 2099 and RCP 6.0 and RCP 8.5 climate change scenarios.

Season	Lowland		Upland			
	PLY		COW		DCF	
	RCP 6.0	RCP 8.5	RCP 6.0	RCP 8.5	RCP 6.0	RCP 8.5
Spring	▲17	▲17	▲24	▲24	▲23	▲23

Summer	▲21	▲26	▲24	▲29	▲21	▲27
Autumn	▼1	▼1	▲11	▲11	▲7	▲6
Winter	▼7	▼11	▲8	▲5	▼4	▼7
Annual	▲3	▲3	▲13	▲13	▲8	▲8

A3 - Deviation between 'observed' and median 'projected' (UKCP18 - 25km resolution) changes (%) in average annual and seasonal precipitation totals by 2070 - 2099 for lowland and upland locations (observed change (%) - projected change (%)). Details as for Table 7, but refers to RCP 6.0 and RCP 8.5 climate change scenarios. DCF is outside the time-period of analysis.

Season	Lowland		Upland	
	PLY		COW	
	RCP 6.0	RCP 8.5	RCP 6.0	RCP 8.5
Spring	▲15	▲15	▲30	▲30
Summer	▲22	▲32	▲37	▲46
Autumn	▲8	▲8	▲31	▲31
Winter	▼20	▼27	▲9	▲3
Annual	▲1	▲1	▲24	▲23

