



Chapter 34

Peptide-Based Drug Delivery Systems: Future Challenges, Perspectives, and Opportunities in Nanomedicine

**Diego Tesauro, PhD,^a Antonella Accardo, PhD,^a Carlo Diaferia, PhD,^a
Vittoria Milano, PhD,^{a,b} Jean Guillon, PhD,^b Luisa Ronga, PhD,^c and
Filomena Rossi, PhD^a**

^a*Department of Pharmacy and CIRPeB, Università Federico II, Naples, Italy*

^b*ARNA, INSERM U1212/UMR CNRS 5320, UFR des Sciences Pharmaceutiques,
Université de Bordeaux, Bordeaux, France*

^c*Institute of Analytical Sciences, IPREM, UMR 5254, CNRS-University of Pau, Pau,
France*

Keywords: peptide, peptide backbone structures, drug delivery, peptide self-assembling carriers, active targeting receptors, diphenylalanine, binding peptides, hydrogels, contrast agents, nanomedicine, supramolecular chemistry, bioimaging, micelles, liposomes, integrin receptors, nanoaggregates, octreotide, bombesin receptors, aromatic interactions, amphiphilic peptides, β -sheet peptides

34.1 Introduction

Peptides of natural and synthetic origin are compounds involved in a wide variety of biological roles. They act as hormones, enzyme

The Road from Nanomedicine to Precision Medicine

Edited by Shaker A. Mousa, Raj Bawa, and Gerald F. Audette

Copyright © 2019 Pan Stanford Publishing Pte. Ltd.

ISBN 000-000-0000-00-0 (Hardcover), 000-000-0000-00-0 (eBook)

www.panstanford.com

substrates and inhibitors, antibiotics, biological regulators, and so on. Therefore, peptides play an essential role in biotechnological applications as therapeutic and diagnostic agents. Their advantages depend on the strategy applied to produce them and include biocompatibility, low cost, tunable bioactivity, chemical variety, and specific targeting. Moreover, they are easily synthesized, for example, by using solid-phase peptide methodologies where the amino acid sequence can be exactly selected at the molecular level by tuning the basic units [1]. Although the drawbacks related to their use are referred to as metabolic instability via protease degradation, an improved metabolic stability can be pursued through several chemical approaches aimed to modify the original peptide sequences. Some examples are the introduction of specific coded or un-coded amino acids, D-counterparts, cyclization, and DNA recombinant technology. Recently, peptides achieved resounding success in drug delivery and in nanomedicine smart applications, thanks to these innovative approaches. These applications are among the most significant challenges of recent decades in transporting drugs only to pathological tissues whilst other districts in the body are preserved from side effects. This specific feature allows the reduction of unwanted drug effects and increases the drug efficacy [2].

In peptide-containing aggregates, peptide sequence can fulfill a structural or a bioactive role. In detail, peptides play a structural role when the primary amino acid sequence drives or affects the molecular self-assembly by adding remarkable weak non-covalent bonds, electrostatic interactions, hydrogen bonds, hydrophobic and Van der Waals interactions, and π - π stacking between the side chains. Furthermore, peptides play a bioactive role when the full sequence, or a part of it, is deputed to recognize specific receptors, such as those overexpressed by pathological cells. In this review, we will focus on the peptide ability to self-assemble and on potential applications of peptide based nanosystems for nanomedicine. In addition, we report recent examples of peptides employed as delivery systems of anticancer drugs and/or contrast agents for the imaging of tumor pathologies. Finally, we will describe peptide nanosystems able to actively address the active pharmaceutical ingredients (APIs) toward specific biological targets.

34.2 Peptide Self-Assembled Nanostructures

Peptides are able to gather into assorted nanostructures, including nanotubes, nanofibers, nanospheres, and nanovesicles, supported by their device and self-assembly conditions [3]. Different types and structures of peptides, including cyclic and linear peptides, amphiphilic peptides, and α -helical and β -sheet peptides, can self-assemble into nanostructures (see Fig. 34.1).

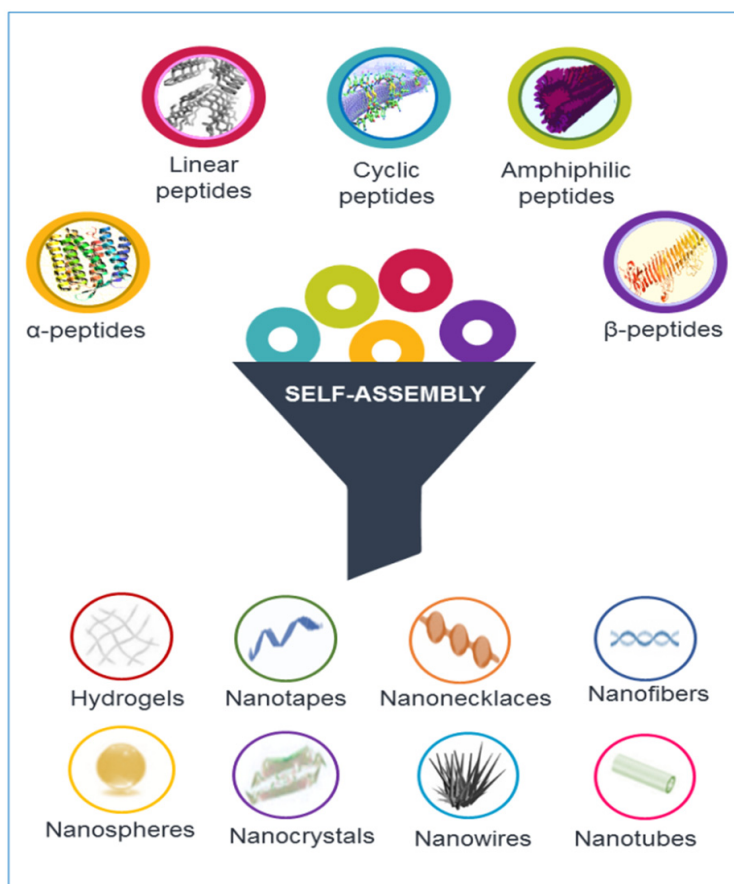


Figure 34.1 Different classes of peptides can be arranged in supra-molecular structures handling the self-assembling phenomena. Various morphologies can be generated according to the rational design of the primary sequence.

34.2.1 α -Helical and β -Sheet Peptides

The primary feature in the design and synthesis of peptide-based biomolecules regards the peptide backbone arrangement in α -helical and β -sheet secondary structures. This is a consequence of the hydrogen bonding pattern interactions through the amide and carbonyls groups in the peptide backbone. After that, the β -strands turn into a β -sheet self-assembled structure that could be rearranged in parallel or antiparallel arrays, according to the direction of the peptide sequences. The peptide is typically designed to contain repeating amino acid residues and distinct hydrophobic and hydrophilic regions. Consequently, the hydrophobic moiety could be hidden within the self-assembled nanostructure while the hydrophilic area could be better exposed to the solvent (water) environment [4]. Unlike β -sheets, α -helices are formed by single peptide chains, where backbone amide components are intramolecularly hydrogen bonded. This arrangement leads to the exposition of side chains of amino acids on the surface of each helix. Thus, their positioning further facilitates the accessibility of the peptide in the solvent.

The regular α -helical peptides with 2,5 helices are shown to aggregate around each other and their structure evolves in nanofibers [5, 6]. These α -helical peptides can also self-assemble into nanofibers if they have at least 30 amino acid residues, through helical coiled-coil structures [7]. The hydrophobic residues could promote the helix oligomerization through hydrophobic collapse.

The β -sheet secondary structures are the naturally occurring motifs most similar to those which carry on into pay peptide self-assembly [8, 9]. The β -sheet determines regular alternating hydrophilic and hydrophobic regions in the peptide sequence. The same structure provides the amphiphilic property to the peptide that drives the self-assembly of β -sheets. For instance, β -sheet peptides (namely the QQR holding sequences) can self-assemble into a pH-responsive hydrogel by means of the side chain's ion affinity for acidic residues of Glu and Arg. These peptides are soluble in neutral pH conditions and they switch into a hydrogel material, in acidic pH surroundings. This behavior can be rationalized in terms of the rearrangement of antiparallel β -sheet tapes. Those β -sheet tapes are obtained at lower pH

values and, afterward, stacked together to form nanofibrils in hydrogels [10]. The intramolecular folding β -hairpin peptides are well represented in the self-assembled sequences in various nanostructures, both in water and in space boundaries. Indeed, the self-assembly of β -hairpins in proteins is carried on by the arrangement of two β -sheets in antiparallel plans. The modulation of pH values reproduces the status in which these materials could be gained and tailored. It is well described that the fundamental mechanism in hydrogels engendered by self-assembly of the β -sheet hairpin structure strongly depends on the increase of the pH values [11].

The peptide self-assembly processes are also kept up by non-covalent interactions that sometime show the key role in the overall configuration. The non-covalent interactions should be taken into high consideration for these grounds, especially when designing peptide self-assembled nanostructures for drug delivery. Indeed, non-covalent interactions shall be rationally applied in the strategies. These non-covalent interactions are effortlessly unfair by external environments, for instance, pH values, temperature array, and the solvent polarity. Indeed, pH values are critical in peptide sequences richer in charged amino acids, such as Glu, Asp, Lys, His, and Arg, as stated above. As a consequence of the rank, these peptides can exhibit negative or positive shell charges. Then, those peptides can self-assemble into different nanostructures, according to the pH values.

34.2.2 Linear Peptides

Recently, data in the literature have reported that short (below six residues) and ultra-short (referred to dipeptides and tripeptides) linear peptides have the ability to self-assemble into many different nanostructures. This aspect, particularly interesting, allows to minimize the synthesis and purification steps and to reduce the cost of the production process [12].

One of the most studied prototypes of self-assembling linear peptides is the ultra-short homodipeptide Phe-Phe (FF) (Fig. 34.2) identified by Gazit and co-workers in 2003 as the smallest region of the $A\beta$ -amyloid peptides ($A\beta_{1-40}$ and $A\beta_{1-42}$) prone to the aggregation [13]. The characterization of FF assemblies via single-crystal X-ray diffraction studies showed that this

dipeptide is able to generate ring-like networks with a hexagonal symmetry, promoted by head-to-tail interactions established by its charged N- and C-terminus. This association trend is further stabilized by “T-shaped” contacts between the phenyl aromatic side chains [14]. Molecular dynamic simulations (MD) corroborated these observations, suggesting the ability of this system to form open ring-like peptide networks in aqueous solution [15]. Additional studies highlighted the structural versatility of this motif by showing that, despite its molecular simplicity, FF homodipeptide is able to form more complex supramolecular architectures [16]. Interestingly, simple modifications of the charged state at the C- or N-terminus of FF, strongly affected its self-assembling pathway. Indeed, the introduction of a thiol group or of a Fmoc-fluorenylmethyloxycarbonyl group can alter the self-assembling phenomena, for example [16].

Nanotubes, nanowires, nanofibrils, spherical vesicles, and organogels are just a few examples of the new peptide materials, based on FF self-assembly. These materials exhibit mechanical properties [17], electrical properties [18], electrochemical properties [19], or optical properties (photoluminescence [20, 21] and optical waveguide [22]) properties. In this context, it is significant to highlight the main property of FF self-assembled nanotubes referring their thermal stability, which is the distinctive skill in bioinspired materials [23]. All these physicochemical characteristics make them suitable for several applications in nanomedicine (tissue engineering, drug delivery, and bioimaging) [18, 24, 25] and in nanofabrication fields (biosensors, nanodevices, and conducting nanomaterials) (Fig. 34.2) [26, 27].

In 2013, Alves et al. suggested for the first time FF-based microtubes (FF-MTs) as potential drug delivery vehicles. In their studies, the authors used Rhodamine B (RhB), a common dye, as a model drug. Data suggested the low *in vitro* toxicity of the FF-MTs and the potential of these carriers to deliver drugs at constant rates [28]. Beyond the low *in vitro* toxicity, FF-MTs units showed very high thermal stability (up to 120°C) and stability towards to the protease degradation. Self-assembled nanotubes obtained for aggregation of unnatural fluorinated-peptides containing two aryl units were found able to penetrate the cultured primary human smooth muscle cells and to locate in their cytoplasmic/perinuclear region [29]. Successively, FF-micro

and nanotubes, covalently conjugated to folic acid/magnetic nanoparticles (FA/MNPs), were also evaluated as a potential delivery systems of the anti-cancer therapeutic 5-fluorouracil (5-FU), and of the anti-inflammatory cargo flufenamic acid (FFA) [30].

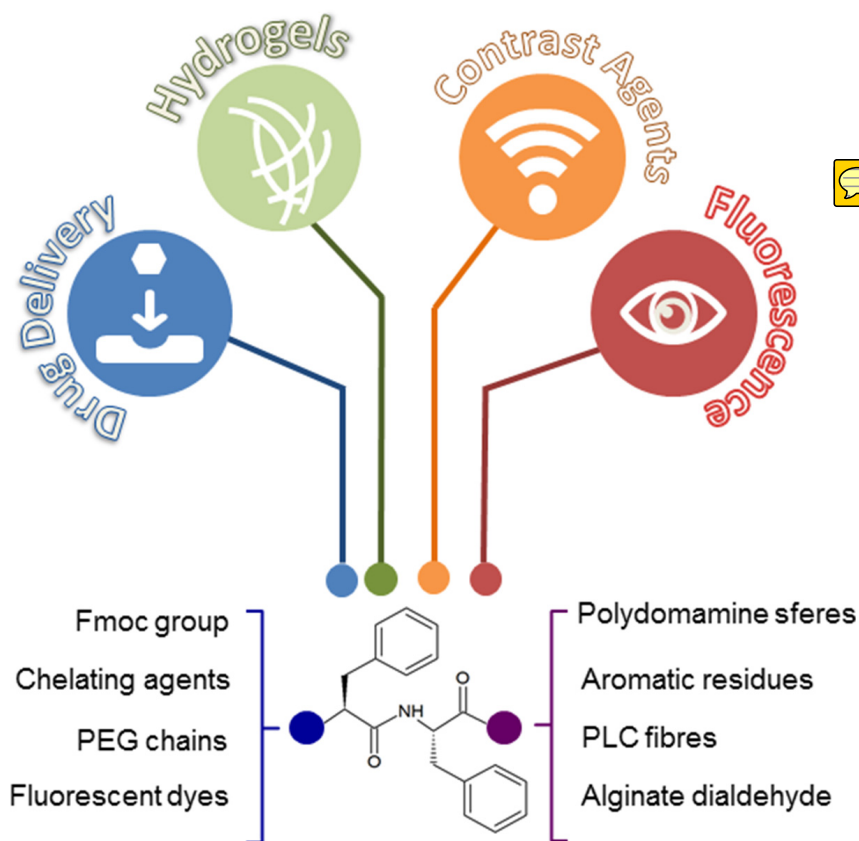


Figure 34.2 Diphenylalanine based aggregates can be applied with different biotechnological scopes, producing drug delivery systems, hydrogels matrices, supramolecular contrast agents, and fluorescent aggregates. Chemical and functional decorations (like sequences modification, incorporation of fluorescent dyes and conjugation with chelating agents and polymers) at N- and C-terminus of the primary sequence produce innovative nanostructured tools.

Analogously to micro- and nanotubes, FF peptide-based nanofibers have also been recently proposed as vehicles of

hydrophobic drugs, like hydroxycamphothecin (HCPT), for cancer therapy. In this study, the replacement of some L-amino acids with D-counterparts permitted to further improve the *in vitro* and *in vivo* biostability of these peptides against the hydrolysis catalyzed by endogenous peptidases. The protease stability allows for prolonged therapeutic effect with reduction of a tumor mass in a rat model [31]. At the same time, nanofibers of D-peptides generated via enzymatic dephosphorylation were also investigated for the controlled release of the anticancer drug taxol, and of a fluorophore (e.g., 4-nitro-2,1,3-benzoxadiazole) used as imaging agents *in vivo* [32]. Moreover, the combination of FF with others organic/inorganic molecules brought to the formation of novel hybrid smart materials responsive to the external stimuli, such as pH, enzyme, and oxidative stress. For example, aldehyde molecules can induce cationic diphenylalanine to assemble into biocompatible and biodegradable enzyme-responsive nanocarriers. These nanocarriers loaded with doxorubicin have been proposed as intelligent antitumor agents [33]. Another example of hybrid stimuli-responsive biomaterials is represented by magnetic hydrogel generated for co-assembly under mild conditions of FF with polydopamine spheres coated with Fe₃O₄ magnetic nanoparticles [34]. Successively, in 2016 Alves et al. reported the formulation of hybrid materials obtained by conjugation of electrospun polycaprolactone (PCL) fibers and micro/nanotubes of L,L-diphenylalanine (FF-MNTs). This biodegradable matrix allows the achievement of a stable release of lipophilic anesthetic benzocaine over periods of up to ≈13 h, much higher than commercially available scaffolds [35].

Concurrently, Wu et al. reported FF-based hybrid nanospheres responsive to pH- and GSH-stimuli. In these spheres, natural alginate dialdehyde (ADA) was employed as cross-linker to induce self-assembly of FF and *in situ* reducer of Au³⁺ ions into Au nanoparticles (Au NPs). These biocompatible spheres were proposed as drug loading and delivery systems. Indeed, they were found able to encapsulate more than 95% of hydrophobic chemotherapeutic drug (camptothecin, CPT). CPT-loaded spheres exhibited satisfactory stability under normal physiological conditions and excellent pH- and GSH-responsive release at pH 5.0 with 10 mM GSH, which is similar to the tumor microenvironment. Moreover, these

nanocarriers can be taken up by cancer cells and have greater cytotoxicity than free drugs [36].

In 2006, Ulijn and co-workers identified Fmoc-FF as one of the first dipeptides able to form a homogeneous, transparent, self-supporting hydrogel with fibrous nanostructure under physiological conditions [37]. The supramolecular nature of Fmoc-FF aggregates suggested its potential use in biological applications, such as controlled drug release, tissue engineering and cell culture. Many examples of multicomponent hydrogels as biocompatible drug delivery systems have been reported until now. FF based hydrogels have been also proposed as vehicle for the delivery of two complementary anticancer drugs, dexamethasone, and either taxol or dehydro-CPT. These peptide hydrogels showed a high *in vitro* biocompatibility for concentrations up to 100 μM over 48 h. Moreover, their principal advantages are the improved stability of the drugs over time at 37°C (i.e., 48 h for the taxol-derivative, and over two weeks for the others) and the slow drug release [38]. Beyond the encapsulation of anticancer drugs, peptide hydrogels can encapsulate non-steroidal anti-inflammatory drugs (NSAIDs) for local use [39] or SPECT tracers [40]. Recently, Fmoc-FF has been utilized in combination with plasmonic gold nanorods (AuNRs) for the development of near-infrared laser-activatable microspheres. These AuNR-embedded dipeptide microspheres, loaded with the anticancer agent, doxorubicin (DOX), were proposed as a smart drug-delivery platform for native, continuous and pulsatile drug release. Results of the study demonstrated the capability to achieve a sustained and on-demand DOX release from the microspheres by manipulating the laser exposure time [41].

Hybrid hydrogel encapsulating docetaxel were also prepared via the calcium-ion-triggered co-assembly of Fmoc-FF peptide and alginate. Due to the synergic effect of these two components, the final material presented much better stability than the single components in both water and a phosphate-buffered solution. Controlled drug release was obtained by varying the concentration ratio between the peptide and the polysaccharide [42]. Fmoc-FF dipeptide has been also utilized to confer mechanical rigidity and stability to natural polymers like hyaluronic acid (HA), a major component of the extracellular matrix. Fmoc-FF/HA composite hydrogels showed a sustained release of curcumin, a

hydrophobic polyphenol showing antioxidant, anti-inflammatory, and antitumor activities. Additionally, in this study, it was observed a direct relationship between the rate of curcumin released and the concentration of the Fmoc-FF peptide within the hydrogel matrix [43]. Fmoc-FF/poly-L-lysine (PLL) injectable multicomponent hydrogels, encapsulating the photosensitive drug Chlorin e6 (Ce6), were also proposed as promising delivery platform in the photodynamic antitumor therapy. *In vivo* studies indicated an efficient inhibition of the tumor growth with no detectable toxicity or damages to normal organs during the treatment [44]. Inspired by Fmoc-FF, recently Adler-Abramovic et al. reported the synthesis of the peptide 6-nitroveratryloxycarbonyl-diphenylalanine (Nvoc-FF) containing an ultraviolet (UV)-sensitive phototrigger [45]. The UV irradiation of the self-supporting hard hydrogel obtained by the self-assembling of this ultra-short peptide prompts the controlled release of the encapsulated insulin-fluorescein isothiocyanate (insulin-FITC), used as a drug model.

Over the years, multidisciplinary studies have revealed that the self-assembly of short linear peptides and still of single amino acids can make a broad range of diversified materials. It was observed that the conjugation of the polyethylene glycol (PEG) to short homopeptides, containing aromatic amino acids permits a substantial increase of their water solubility. The aromatic residues that can be such are, for example: phenylalanine (Phe, F), tyrosine (Tyr, Y) [46], tryptophan (Trp, W) [47], and naphthylalanine (Nal). Recently, Diaferia et al. proposed a polymer-peptide (PEGylated-F4) functionalized with Gd-DTPA and Gd-DOTA as contrast agent for potential diagnostic applications in magnetic resonance imaging (MRI) [48]. Single peptides in the aggregates are in a β -sheet conformation with an antiparallel alignment along the fiber axis. Each Gd-complex in the nanostructure exhibits a relaxivity value around $15 \text{ mM}^{-1}\text{s}^{-1}$ at 20 MHz, approximately three-fold higher than the classical contrast agents at low molecular weight ($4.7 \text{ mM}^{-1}\text{s}^{-1}$). These relaxometric parameters are in line with other examples of Gd(III) based supramolecular (micelles or liposomes) contrast agents [49]. Due to the significant internalization efficiency and due to the high relaxivity values, these nanostructures are able to enhance the MRI cellular response on J774A.1 mouse macrophages cell line. In detail, within those cells the cytotoxicity of the fibril nanoaggregates was

negligible with an incubation time of 3 h in the 0.5–5.0 mg/mL concentration range.

The same authors also evaluated the effect of the Gd-complex position in the aromatic framework and of the replacement of the phenylalanine with the non-coded amino acid 2-Nal [50, 51]. They observed that the different positioning of the chelating agent into the aromatic framework (at the center or at the N-terminus of the F4-motif) causes a drastic loss of the tendency to self-assemble and of the relaxivity value ($11 \text{ mM}^{-1}\cdot\text{s}^{-1}$). The decrease of the latter is related to the major flexibility of the Gd-complex on the supramolecular aggregate. On the other hand, the replacement of Phe in the homodimer with non-coded 2-Nal amino acid permits to restore in dipeptide π - π interactions and to prompt self-assembly of Gd-conjugates. This happened thanks to an extended aromatic ring in its side chain. Above 20 mg/mL, Gd-2Nal₂ peptide derivative gels and it was found able to encapsulate anticancer drugs like DOX, thus suggesting a potential use as theranostic systems.

Recently, Rosenman et al. [21, 52] reported the capability of FF and FFF NSs to emit photoluminescence (PL) in the blue and in the green spectral regions, upon thermally induced reconstructive phase transition. Kaminski et al. [53] also observed the same phenomenon in proteins and in amyloid-like fibrils rich in β -sheet structures. According to the literature, in 2016 Diaferia et al., synthesized series of PEGylated oligo-phenylalanines (PEG₈-F6, PEG₁₂-F6, PEG₁₈-F6, PEG₂₄-F6) able to generate supramolecular systems rich in β -organization [54, 55]. Due to the presence of their β -sheet structures, these polymer-peptides have been proposed as promising bioimaging agents. These peptide nanostructures keep their optoelectronic properties both in solution and at the solid state, upon excitation at 370, 410, and 460 nm, respectively. From a comparison along PEG-series arises that the PEG length and its composition could alter both the structural and the optoelectronic properties of the final material. The differences in the optoelectronic properties were attributed to the extension of the electron delocalization via hydrogen bonds along the cross β -structure of the peptide spine. This effect is due to the number of amide bonds along the PEG chain. With the aim to develop novel biocompatible peptide nanostructures

as bioimaging tools, the same authors tried to improve the performance in terms of PL intensity and of wavelength range compatible with *in vivo* applications. They demonstrated that the intrinsic PL of these peptides nanostructures can be transferred to an acceptor dye like 4-chloro-7-nitrobenzofurazan (NBD) confined in proximity of the nanofiber. Then, the entrapment of NBD in these NSs caused a red-shift from 460 to 530 nm. This evidence was the proof of concept that PL can be red-shifted towards the infrared region of the visible spectrum [56].

34.2.3 Cyclic Peptides

In 1974, theoretical analysis suggested the possible arrangement of a cyclic peptide in a hollow tubular structure [57]. Twenty years later, Ghadiri and coauthors solved the first crystalline structure of nanotube structure, by ring stacking of cyclic peptides incorporating alternating D and L amino acids: cyclo-(L-Gln-D-Ala-L-Glu-D-Ala)₂ [58]. The peptide side chains were devised on the external area. It is observed that they were organized in the typical nanotube structures, as a consequence of the alternating D and L amino acids. The nanotubes are self-assembled and stabilized by hydrogen bonds between amide groups of the cyclic backbone.

In addition to alternating D- and L-type α -amino acids, several cyclic peptide sequences can make the self-assembly by alternating α - and β -amino acids, β -amino acids, and δ -amino acids by molecular stacking and H-bonds between backbones [59–62]. The size of the cavity depends on the length of the cyclic peptide, from 2 to 13 Å, increasing from a tetramer to a dodecamer. This parameter with charges on the side chain is essential for the use in biotechnological applications. By tailoring the chemical structure of the cyclic peptide, supramolecular self-assembled architectures can be accustomed to meet the requirements of applications, including stimuli-responsive nanomaterials antibacterial agents, for ion channeling and ion sensing and gene delivery.

Despite a large number of cyclic peptide nanotubes (cPNT) designed, their use as carriers of anti-cancer drugs is very poor. Zhang and co-workers [63] designed an eight-residue cyclic peptide containing Glu and Cys amino acids able to self-organize in a micro-scaled aggregate. PEGylated aggregates loaded with

DOX showed a high drug encapsulation ratio. Compared to free DOX, the PEG-modified DOX-loaded CPNT bundles demonstrated higher cytotoxicity, increased DOX uptake and altered intracellular distribution of DOX in human breast cancer MCF-7/ADR cells *in vitro*.

34.2.4 Amphiphilic Peptides (PAs)

Nature has elected amphiphilic molecules to generate life, by using them to circumscribe portions of the environment. Instead, membranes are able to confine biomolecules and to promote the transport of molecules and ions. Imitating the Nature, amphiphilic peptides self-assemble into different nanostructures, including vesicles, micelles, nanofibers, and nanotubes, thus playing a pivotal role in the production of nanomaterials for biotechnological applications [64, 65]. These molecules contain distinct hydrophobic and hydrophilic segments. The most simple peptides able to self-aggregate are constituted by short or long homo-chains of hydrophobic amino acids, like Val, Ala, Gly, and Phe, followed by one or more electrostatic charged residues (such as Asp, Glu, or His). The driving forces of the aggregation are electrostatic (for Asp, Glu, and His residues) and hydrophobic interactions (for Val, Ala, Gly, and Phe residues) that address into a wide variety of nanostructures, depending on their physical and chemical properties.

In 2002, Zhang and co-workers investigated peptide sequences containing an hydrophobic moiety (valine [66], glycine [67] and alanine residues [68]) and an hydrophilic head (one or two Asp residues or one of Lys). These molecules self-assemble into various nanotubes or nanovesicles. In particular, the Lys cationic residues on the head of these peptides could favor their own conjugation with negatively charged DNA and RNA opening the possibility of application in gene drug delivery. Later, Hamley's group has investigated a cationic peptide in which the hydrophobic tail consists in six Ala residues with an Arg head group. At low concentration, this peptide self-assembles in ultrathin sheets, whereas at higher concentrations the sheets wrap around themselves to form nanotubes and helical ribbons. This structure shows antimicrobial properties [69]. It is noteworthy that another sequence able to aggregate is obtained by alternating hydrophobic

amino acids with residues bearing on the side chain positive and negative charges. In this case the EAK16 model peptide aggregates into nanofibers [70]. The methyl groups of alanines form a sheet structure inside, whilst the charge residues are exposed on the external wall. This structure is able to delivery ellipticine, an anticancer drug. The UV analysis and the fluorescence demonstrated electrostatic interactions and the conjugation method between the drug and the nanofibers [71].

Aliphatic peptides and lipopeptides were also proposed as building blocks for self-assembling. The feature of lipopeptides is the presence of different short or long alkylic chains as hydrophobic moiety, in the monomer structure. In this case, the aggregation is supported by van der Waals forces. The simplest lipopeptides are also able to form nanostructures. L-dodecanoylserine monomer forms: nanotubes, partially wrapped nanotubes and helical ribbon structures [72]. A peptide amphiphile comprising a single Lys residue, an alpha-(L-Lys),omega-(amino)bolaamphiphile, it was shown to form nanotubes in acidic aqueous solution [73]. Many lipophilic PAs can self-assemble into cylindrical nanofibers, as a consequence of H-bonds among peptide moieties and hydrophobic collapse of alkyl tails [74, 75]. The induction of self-assembly in these cylindrical structures could be obtained in aqueous media, in presence of suitable stimuli such as pH [24, 40]. The tetrapeptide sequence, composed by hydrophobic and negatively charged residues (Val-Glu-Val-Glu), it grafted to an alkyl tail at sixteen carbon atoms, self-assembled into monodispersed nanobelts in an aqueous solution at a concentration of 0.1 wt% [76]. In this regard, Hartgerink et al. described two different self-assembling modes [74]: acid-induced self-assembly and Ca^{2+} induction. For the acid-induced self-assembly, PA including $\text{C}_{16}\text{H}_{31}\text{O}$ grafted to $\text{C}_4\text{G}_3\text{S}(\text{PO}_4)\text{RGD}$, they can aggregate in nanofibers after dissolution in water and exposition to gaseous HCl. On the other hand, the treatment of a solution of these conjugates with Ca^{2+} instantly caused the gel formation in solution. This Ca^{2+} -induced self-assembly may be particularly helpful for medical applications at physiological pH, where formation of a gel is mandatory.

Drug delivery applications of hydrogelation based on PAs were studied by the Stupp's group [75]. In their studies, the chemical structure of the PA molecule ($\text{C}_{16}\text{V}_2\text{A}_2\text{E}_2$) is composed of three

segments: an hydrophobic tail (palmytic acid), the well-established β -sheet amino acid sequence V_2A_2 and two negatively charged glutamates able to induce cross-linking in presence of Ca^{2+} ions in solution. Properties of this peptide as controlled drug release tool were investigated linking prodan, a fluorescent lipophilic tag used as a dielectric probe for cell membranes. This probe was linked to the peptide through a hydrazine bond inserting a Lys residue at different positions along the backbone of the peptide. This pH-sensitive bond can be broken in acidic conditions of a cell compartment. Hydrogel formation was induced by adding a 100 mM Ca^{2+} solution after dissolving PA in NaOH.

Lipopeptides with similar chemical structure can form self-assembled micelles. Stearyl- H_3CR_5C lipopeptide, that are crosslinked by disulfide bonds (SHRss), have been used to form DOX-loaded micelles with an average diameter of 233 nm by nanoprecipitation and probe-based ultrasonication methods. DOX and microRNA are then loaded into the micelles through hydrophobic interactions [77]. The DOX release profile strongly depends on the pH value. Indeed, a larger amount of drug was released at pH 5.5 (82.6%) (corresponding to the endolysosomal pH) than at physiological pH 7.4 (63.3%). Cellular uptake has also been investigated by flow cytometry and confocal laser scanning microscopy (CLSM) on DU145 (human prostate cancer) cells. Results indicated that the uptake of micelles were time-dependent with an intracellular uptake rate higher after 4 h of incubation ($89.50 \pm 0.99\%$) than after 1 h of incubation ($82.56 \pm 1.55\%$). Cationic micelles can be obtained by self-assembly of PAs in which the hydrophobic moiety is represented by cholesterol (Chol) and the hydrophilic head contains a variable number of positively charged residues, such as histidine and arginine (Chol- CH_5R_5 , Chol- CH_3R_3 , Chol- CR_5 , and Chol- CR_3) [78]. These aggregates are able to adsorb on their surface different amount of DNA depending on the ratios between the arginine residues and DNA phosphate bases. Formation of micelles with palmitoyl-p53₁₄₋₂₉ has been studied by Missirlis et al. [79]. This PA self-assembled in 10 mM phosphate buffer; the hydrophobic interactions induced the simultaneous formation of micelles with a hydrodynamic diameter of 319 nm and the formation of elongated micelles with a diameter of 10 nm having a length of a few hundred nanometers.

34.3 Self-Assembling PAs for Targeting in Nanostructures

In PA-based nanostructures, the main goal of peptides is to drive the self-aggregation and to regulate the loading and the release of the encapsulated drug. In the wide category of PAs, the sequence of the amino acids is responsible for the targeting and delivery features. For this purpose, the sequence is selected on the ability to cross the cell membrane or to bind overexpressed receptors on the cell membranes.

34.3.1 Cell Penetrating Peptide (CPPs) and Smart Sequences

Cell penetrating peptides (CPPs) are a large class containing more than 1700 different experimentally validated sequences [80, 81]. Most common CPPs are cationic and they are widely used. A class of CPPs are derived from the α -helical domain of the Tat protein, covering residues from 48 to 60. Those residues are mainly composed of basic amino acids, such as the TAT dodecapeptide: GRKKRRQRRRPQ [82]. The CPP role as a nanovector has been described in many reviews [83, 84].

Despite high cellular uptake efficiency, CPPs lack cancer cell specificity. To overcome this drawback stimuli-responsive CPPs have been developed recently to enhance the cellular uptake of therapeutic cargo only in the tumor tissue. As previously reported, these stimuli can respond to pH variation or to enzyme activity or to oxidative stress. CPPs can be considered as responsive molecules when containing residues able to vary the net charge depending on the pH. One residue able to tune the net charge of the peptide is His. Therefore, Zhang et al. designed an α -helical CPP to obtain a pH-responsive peptide, by replacing all its lysines with histidines (THAGYLLGHINLHHLAHL(Aib)HHIL). This peptide (TH) showed a neutral charge at physiological pH, but the net charge became positive under acidic conditions, so that its cell penetration capacity was activated [85]. PEGylated liposomes functionalized with TH peptide showed a more efficient internalization into C26 colon cancer cells, when compared to non-targeted liposomes. Moreover, PTX-loaded liposomes suppressed C26 colon tumors

in vivo with high apoptosis levels where the tumor inhibition rate reached 86.3%. Proteases abundant in tumor tissue can constitute internal stimuli for activating CPPs. Liu et al. developed a liposome able to carry DOX labeled with the sequence AAN-Tat [86]. The AAN sequence is a substrate of Legumain endoprotease. The addition of the AAN moiety to the fourth lysine in the TAT generates a branched peptide moiety, which leads to a decrease in the transmembrane transport capacity of TAT up to 72.65%. The action of the enzyme allows restoring the penetrating capacity of TAT. *In vivo* assays carried out on nude mice showed inhibition of the tumor growth significantly higher in mice administered with AAN-TAT liposomal DOX than control. Simultaneously, for the group treated with targeted DOC liposomes, it was also observed a prolonged survival period. Another stimulus could be derived externally, such as UV or NIR irradiation. In these cases, the CPP peptide is modified by the action of a residue with a photolabile protecting group. Upon reaching the tumor site, the peptide-functionalized liposomes are irradiated by UV or NIR light that cleaves the protective groups and in this way allows the CPP to play its role. Following this methodology, a CPP (CKRRMKWKK or CGRRMKWKK) enhances the efficiency of the translocation, derived from the penetration. This CPP is designed to turn into an inactive form by neutralizing the positive charges of the lysines, which are caged with photoresponsive groups [87].

34.3.2 Peptide Able to Interact with Overexpressed Receptors

In certain PAs, the receptor-targeting peptides are able to induce high levels of internalization within tumor cells due to a receptor-mediated endocytosis mechanism. The peptide sequence can be composed in this manner [88]. These strategies could allow the intracellular delivery of the payload. Some known endogenous proteins are able to bind the target receptor with high affinity. A significant topic of research is about how to preserve the affinity for the overexpressed receptors, especially after the conjugation to the hydrophobic moiety. Furthermore, evidence showed how all the residues which are involved in the receptor binding are well-

exposed on the nanostructure surface. Those residues maintained a conformation suitable to the interaction with the receptor [89]. Further studies are aimed to preserve the *in vivo* chemical stability, due to the high sensitivity of peptides to the protease degradation. Improved metabolic stability and pharmacokinetics can be achieved by modifying peptide sequences with either specific coded amino acids or un-coded amino acids, or, as well, with amino acids in the D configuration. Alternative strategies consist of: the cyclization between the *N*- and *C*-terminals, the cyclization between the *N*- or *C*-terminal and a side-chain, or the cyclization between two side-chains.

Peptide sequences can act as cell surface receptor antagonists if molecules are modeled, allowing selective targeting towards receptors. Antagonist peptides show a dual advantage if compared with their agonist counterparts: On the one hand, they do not act in the biological pathways following receptor binding; on the other hand they present higher binding capacities [90, 91]. However, the strategy of rational design of new compounds has some limits, one of the most significant being the limit of the knowledge requirement related to the structure of ligand/receptor interaction [92]. A further possibility to identify novel peptide sequences is the use of the phage display technique, concerning recognizing tumor-associated proteins [93]. Next to the identification of a peptide sequence, some suitable spacers (charged or neutral) can be inserted between the hydrophobic region and the peptide. One of the most used spacers in this context is uncharged PEG. Indeed, the presence of one or more ethoxilic units permits an increase in the blood circulation time of the supramolecular aggregates (enhanced permeability retention effect). In addition, the lack of charge prevents interactions with the residues on the bioactive portion which could induce unnatural and incorrect conformations. Furthermore, the spacer allows the maintenance of the molecule's flexibility, mobility, and increases, in some cases, the solubility. The formulation of supramolecular aggregates, like micelles and liposomes, externally functionalized with bioactive peptides, may be obtained by using different approaches, such as pre-functionalization and the post-functionalization strategies [94–97]. In the pre-functionalization,

the peptide sequence is placed on the aggregate during the nanostructure preparation: Figure 34.3 (left panel) shows an amphiphilic peptide derivative added during the formulation step. In the post-functionalization strategy (Fig. 34.3, right panel), the peptide is chemically conjugated on the aggregate surface after nanostructure organization. The advantages of the first method are a defined quantity of bioactive molecules in the aggregate and the avoidance of impurities, but it requires as input a well-purified amphiphilic peptide molecule. However, in the case of liposomes, the bioactive peptide is located on both the external surface and in the inner aqueous compartment, after liposomal formulation. In the post-functionalization approach, peptide coupling concerns the introduction of suitable functional groups (already activated) onto the external side of liposomes

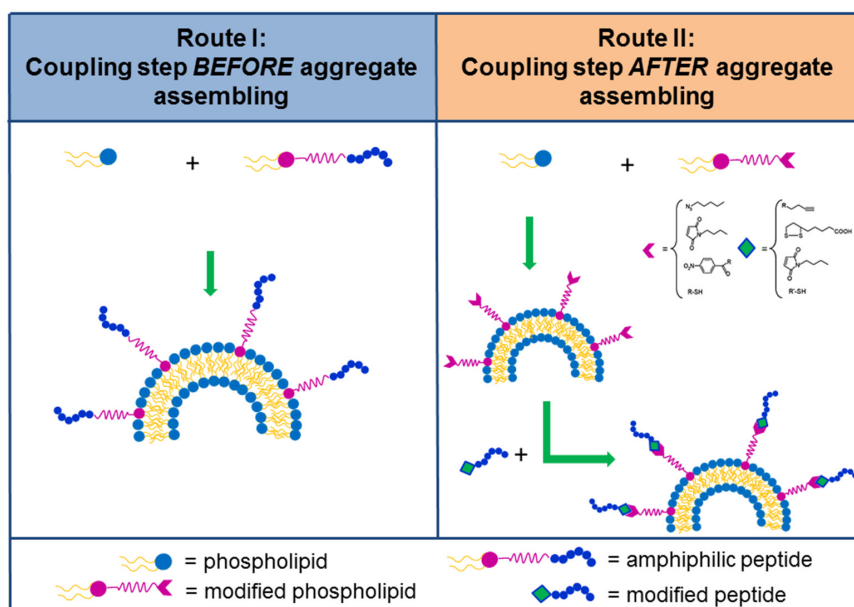


Figure 34.3 Schematic representation of two approaches used for the synthesis of peptide containing liposomes. In route I (pre-liposomal functionalization) a PA is inserted directly during the liposome formulation. In route II (post-liposomal functionalization) a peptide is anchored on the external surfaces after liposome formulation by a selective reaction between two functional groups displayed on the peptide and on the liposome, respectively.

or nanoparticles for covalent or non-covalent peptide binding. In order to make sure about the proper orientation of the targeting ligand, biorthogonal, and site-specific surface, it is necessary to choose the appropriate reactions. In this sense, the most used chemical approaches are: enzymatic ligation, Cu-free chemistry, the amine in case of the N-Hydroxysuccinimide coupling method; thiol for maleimide; Michael addition; azide for Cu(I)-catalyzed Huisgen cycloaddition (CuAAC); biotin for non-covalent interaction with avidin; triphosphines for Staudinger ligation; and hydroxylamine for the oxime bond [98].

In the literature, targeting peptides are tailored toward three broad types of receptors which are overexpressed or exclusively expressed in cancer vasculature and/or cancer cells: integrins; growth factor receptors (GFRs); and G-protein-coupled receptors (GPCRs). Several examples of supramolecular systems loaded with therapeutic or diagnostic agents and externally decorated with homing peptides, able to selective recognize integrin receptors or membrane receptors belonging to the GPCR superfamily, are reported in Table 34.1.

34.3.2.1 Peptide Target for Integrin Receptors

Integrins are heterodimers transmembrane receptors related to the cell-extracellular matrix (ECM) adhesion. Upon ligand binding, integrins activate cellular signals such as regulation of the cell cycle, organization of the intracellular cytoskeleton, and movement of new receptors to the cell membrane. Integrins are one of the most important receptors that can be used in active targeting strategies [122]. Among the different subfamilies of these heterodimeric transmembrane proteins, integrins $\alpha_v\beta_3$ and $\alpha_v\beta_5$ have prominent roles in angiogenesis and metastatic disseminations. The integrin $\alpha_v\beta_3$ plays a very domineering role in angiogenesis and is overexpressed in endothelial cells of the tumor. Recently a large exploration in the field of $\alpha_v\beta_3$ integrin-mediated bioactive targeting for cancer treatment has been reported. All designed peptide sequences contain the RGD motif.

Table 34.1 Supramolecular systems decorated with homing peptides able to selectively recognize integrin receptors or membrane receptors belonging to the GPCR superfamily

Receptor	Peptide Sequence	Peptide Derivative	Drug	Ref.
Integrin receptor Avβ3	c(RGDfK)	c(RGDfK)-NHS-PEG-PLA	CA4	[99]
	c(RGDfK)	c(RGDfK)-SH post liposome modification	CDDP	[100]
	c(RGDfC)	MBPE-c(RGDfC) post-insertion	DOX	[101]
	c(RGDf[N-Met]K)	c(RGDf[N-Met]K (Ac-SCH2CO))	DOX	[102]
	c(RGDyK)	DSPE-PEG-c(RGDyK)	CDDP	[103]
	cAbaRGD	DSPE-PEG-cAbaRGD	DOX	[104]
	cAmpRGD	DSPE-PEG-cAmpRGD	DOX	
	iRGD	iRGD-HES-SS-C18 NCs	DOX/sorafenib	[105]
	Octreotide	OCA-DOTA/OCA-DTPAGlu	Gd-complex	[106]
	Octreotide	(C18) ₂ (AdOO) ₅ OCT	Gd-complex	[107]
	Octreotide	(C18) ₂ (AdOO) ₅ OCT	CDDP/DOX	[108]
	Octreotide	OCT-(PTX)-PEG-b-PCL	PTX	[109]
	Octreotide	Oct-Phe-PEG-SA	DOX	[110]
	Octreotide	H40-PLA-PEG-OCT	TDP-A	[111]
Octreotide	SAMA-TOC post liposome modification	¹¹¹ In-DTPA	[112]	
Octreotide	HSPE-PEG4000-OCT	DOX	[113]	
G-Protein coupled receptor	[Tyr ³]-Octreotate	Maleimido-TATE	⁶⁴ Cu-DOTA	[114]
	KE108	KE108 post micelle modification via NHS	TDP-A AB3	[115] [116]
	[7-14]BN wild-type	(C18) ₂ -L ₅ -[7-14]BN (C18) ₂ -PEG3000-[7-14]BN	¹¹¹ In-DOTA	[117]
	[7-14]BN-AA1 analogue	MonY-BN-AA1	DOX	[118]
			AUL12	[119]
			DOX	[120]
CCK8	(C18) ₂ -L ₅ CCK8	Gd-DOTA/ Gd-DTPA	[121]	

Note: The bioactive peptide, the peptide conjugation, the encapsulated API, and the corresponding references are reported.

In most of the cases, the cyclization is commonly employed to improve the binding properties, conferring rigidity to the structure. In linear peptides, the fourth amino acid alters the binding specificity and the nature of residues, by flanking the RGD sequence. The fourth amino acid could influence receptor affinity, receptor selectivity, and other biological properties [123]. Therefore, nanoaggregates grafted with cRGD sequence have been widely evaluated for the treatment of different cancers, such as ovarian cancer, melanoma, and breast carcinoma [124, 125]. The first examples of aggregates functionalized with RGD containing peptides they were formulated only in half of the last decade. In fifteen years, more than 450 articles were published on RGD-labeled liposomes or micelles delivering hydrophilic drugs like DOX [126, 127], but also with many others anticancer drugs, such as cisplatin (CDDP) [128], paclitaxel (PTX) [129, 130], docetaxel (DTX) [131], combretastatin A4 (CA4) [132], and 5-fluorouracil (5-FU) [133, 134].

Generally, the RGD sequence is inserted in a five residue cycle in which one of the amino acids is in the D-configuration. Therefore, in the case of a single D-amino acid and four L-amino acids, the homodetic cyclic pentapeptide prefers a II'/conformation with the D amino acid in the $i + 1$ position of the II'-turn [135]. Most aggregates were grafted with the c(RGDfK) cyclic peptide (Fig. 34.4a). This sequence, developed by Kessler et al. [136], is able to target the $\alpha_v\beta_3$ and $\alpha_v\beta_5$ integrin receptors [137]. For example, c(RGDfK) was coupled to poly(L-lactide)-block-poly(ethylene glycol)-succinic ester (NHS-PEG-PLA) [138] to obtain polymeric micelles able to deliver hydrophobic drugs like CA4 [99].

The density of cRGD on the micelle surface can affect the amount of drug delivered into the cells. This issue was studied by Kataoka's group varying the quantity the monomer functionalized by cRGD ligand from 5% up to 40%. cRGDfK-labeled micelles were prepared by "post conjugating" Cys-containing cRGD peptides onto maleimide-functionalized DACHPt/micelles obtained from a mixture of poly(ethylene glycol)-b-poly(L-glutamic acid) (MeO-PEG-b-P(Glu)) and maleimide-conjugated poly(ethylene glycol)-b-poly(L-glutamic acid) (Mal-PEG-b-P(Glu)) [100]. The better results in terms of uptake and cytotoxicity were observed for cis-platinum-loaded micelles functionalized with an amount of peptide ranging between 20% and 40%.

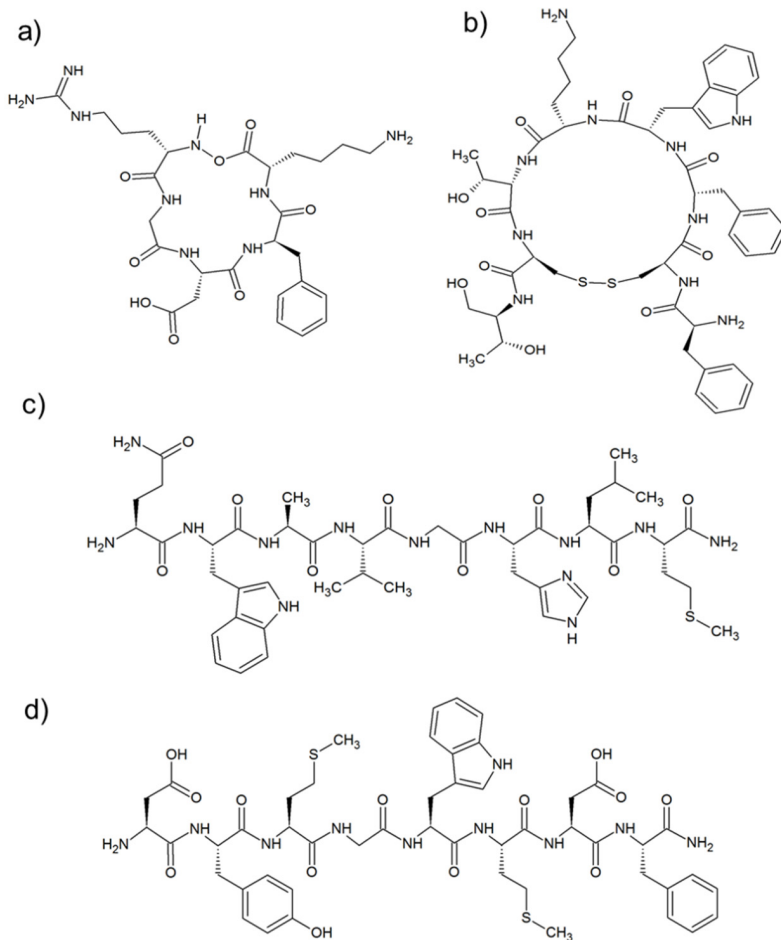


Figure 34.4 Structure of targeting peptide sequences: **(a)** c(RGDfK); **(b)** Otreotide[c(2-7)-FCFWKTcTo]; **(c)** [7-14]-Bombesin (H-QWAVGHLM-NH₂), and **(d)** CCK8(H-DYMGWMDf-NH₂).

Others analogue cyclic RGDs were also analyzed for drug delivery applications. One of those studies was performed by Tao et al., who formulated DOX loaded liposomes labeled with c(RGDfC): the peptide was conjugated to the liposomal surface by a thiol-maleimide coupling reaction with MBPE lipid [MBPE-c(RGDfC)] and the PEG coating of liposomes was obtained by using the post-insertion method [101]. Key factors in tumor therapy are biodistribution and clearance of the aggregates affected by

peptide hydrophilicity. In view to assess the effect of the peptide hydrophilicity, PEGylated liposomal DOX has been tested *in vitro* on integrin-expressing HUVEC cells, after the insertion of three cyclic RGD analogues: RGDyC, RGDf[N-Met]K, and RGDfK. Liposomal systems grafted with the RGDf[N-Met]K sequence were then compared to the other two analogue sequences (RGDyC and RGDfK). They showed the lowest undesired (not) specific interactions with other integrin-presenting sites, localization in tumor, and lower DOX side effects [102]. Moreover, a further cyclic sequence c(RGDyk) was then put in place as a labeling cisplatin delivery system for therapeutic applications against bone metastasis derived from prostate cancer in a mouse model [103]. CDDP-loaded targeted liposomes showed a higher cytotoxicity ($IC_{50} = 1.83 \mu\text{M}$) than free drug ($IC_{50} = 15.4 \mu\text{M}$) or untargeted liposomal drug ($IC_{50} = 10.0 \mu\text{M}$). The capability of these targeted liposomes to be selectively accumulated in metastatic tumor bones was tested during several *in vivo* assays. They showed a clear tumor egression.

Moreover, other analogues were obtained introducing in the peptide cycle of the cyclo azabicycloalkane and aminoproline residues. Zanardi et al. arranged targeted liposomal doxorubicin by incorporating a 5% molar ratio of DSPE-PEGcAbaRGD or DSPE-PEG-cAmpRGD amphiphiles into cAbaRGD-LP or cAmpRGD-LP, respectively [104]. They also studied their *in vitro* behavior on three different cell lines (MCF7, HUVECs, and HepG2). Results showed how both targeted liposomes (cAbaRGD-LP or cAmpRGD-LP) possess higher kinetics of nuclei internalization and a higher percentage of cell death when compared to the free drug.

In the last decade, a new cyclic peptide (CRGDKGPDC) iRGD was identified for peptides hosting tumor metastases [139]. This peptide was found to bind $\alpha\beta$ integrin overexpressed on the surface of cancer cells and on tumor-vessel cells, but not in normal vessel cells. In delivery applications, the peptide was anchored on the surface by a post-insertion method, in turn, to develop the iRGD properties of several aggregates transporting the isoliquiritigenin (ISL), a natural anti-breast cancer dietary compound [140] or the doxorubicin and sorafenib [105]. However, self-assembling iRGD-based amphiphilic molecules have rarely been reported. The targeting motif was chemically modified with a hydrophilic arginine-rich sequence and hydrophobic alkyl chains sequentially able to self-assemble in a nanostructure.

This adjustment aimed to deliver photosensitizer hypocrellin B for photodynamic application the iRGD [141]. Moreover, very recently, a new PA containing iRGD and a hydrocarbon chain, in addition to hydroxyethyl starch (HES), a semi-synthetic polysaccharide (iRGD-HES-SS-C18 NCs), was formulated [142].

34.3.2.2 GPR Target Peptide

A wide number of nanostructures were functionalized with peptides able to recognize GPCRs, in particular to target receptors for somatostatin (SST), cholecystokinin (CCK), gastrin-releasing peptides (GRP/Bombesin), lutein, and neurotensin.

34.3.2.2.1 Somatostatin receptors

Nanoaggregates directed toward somatostatin receptors have been widely exploited for diagnostic and therapeutic applications. Instead, a side effect is highly frequent in the expression of SSTR in human tumors of neuroendocrine origin, mostly affecting the expression in normal tissues. In general, SSTR2 is the most common SSTR subtype found in human tumors, followed by SSTR1, with SSTR3, that are four and five times less common. Due to the very low *in vivo* half-life of the wild-type SST tetradecapeptide, researchers have preferred to label aggregates with more stable somatostatin analogues. The most renowned selected analogue is the octreotide (OCT) shown in Fig. 34.4b. The OCT is a cyclic peptide containing eight amino acids in L and D configuration, developed in 1992 by Sandoz (now Novartis) [143]. This cyclic peptide is able to cross the cell membranes via endocytosis by binding to SSTR2 with high affinity and inhibitory concentration better than wild-type SST ($IC_{50} = 2$ nM). The OCT is able to bind also SSTR3 ($IC_{50} = 376$ nM) and SSTR5 ($IC_{50} = 299$ nM), but with a lower degree if compared to SSTR2. Moreover, the OCT peptide binding to receptors is not affected by chemical modifications on its *N*-terminus.

Octreotide-labeled aggregates may be obtained following both previously reported approaches and employing opportune strategies aimed to avoid possible undesired compounds. Many studies demonstrated that the β -like turn, formed by Phe-Lys-DTrp-Thr residues, is involved in receptor binding [144]. Therefore, it is essential to verify the retention of the amino acid configuration and the exposition of the tryptophan residue on the external

aggregate surface. Hence, after their formulation, peptide properties on the liposomes have to be fully characterized. In 2009, Morisco et al. synthesized OCT amphiphilic molecules able to self-assemble in micelles for the selective delivery of MRI contrast agents [106]. These PAs contain three different regions: a hydrophobic moiety based on two stearyl chains, a chelating agent (DTPAGlu or DOTA) able to coordinate Gd^{3+} ions as a contrast agent, and the bioactive peptide. Fluorescence studies indicate for all micelles a complete exposure of OCT on the surface. CD measurements show the predominant presence of a β -sheet peptide conformation, characterized by a β -like turn.

The majority of aggregates in the literature are not formulated only by PA self-assembling, but they are obtained by mixing PAs with other surfactant molecules. Morelli's group has studied mixed aggregates formulated by co-assembling of the OCT lipopeptide with a second monomer containing in the hydrophilic head: a metal complex acting as diagnostic or therapeutic agent. In diagnostic aggregates (Gd-DTPAGlu, Gd-DTPA, and Gd-DOTA complexes), the metal chelate is covalently bound through a lysine residue to two eighteen-carbon chains [107]. Structural characterization of the aggregates indicates a shape and size of the supramolecular aggregates suitable for *in vivo* use. Therapeutic aggregates were formulated by co-assembling, at a 10/90 molar ratio, of the OCT lipopeptide with a second amphiphilic monomer containing a cytotoxic platinum complex anchored to the lipophilic tails, $(C18)_2$ PKAG-Pt [108]. The $(C18)_2$ -PKAG-Pt/ $(C18)_2$ (AdOO)₅-OCT mixed aggregates generate large liposomes with an average diameter of 168 nm. These liposomes were further loaded in their inner aqueous compartment with the hydrophilic DOX drug. Indeed, platinum complexes are frequently used as chemotherapeutics, in combination with other drugs such as paclitaxel, bleomycin, vinblastine, and in several trials with DOX. This represents the proof of concept of combined therapy based on DOX and platinum complexes.

Targeted OCT aggregates were also largely investigated as carriers for the delivery of hydrophobic anticancer drugs, such as paclitaxel (PTX): a mitotic inhibitor used to treat patients with lung, ovarian, breast, head and neck cancers, and advanced forms of Kaposi's sarcoma. Zhang et al. loaded PTX in polyethylene glycol-polycaprolactone (PEG-PCL) polymeric micelles, they obtained the

OCT-(PTX)-PEG-b-PCL (OCT-M-PTX) and the salinomycin (SAL)-loaded PEG-b-PCL (M-SAL). The OCT was coupled to NHS-PEG-b-PCL through the activated NHS group [109]. These micelles had a diameter of approximately 25–30 nm and the encapsulation efficiency of the drug was 90%. Moreover, by adding free OCT, the interaction was inhibited, then it was confirmed that cellular uptake occurs through a receptor-mediated mechanism.

Zou et al. coupled OCT to hydrophobilized chitosan polymer [110]. This peptide derivative was able to self-assemble in micelles having very low cytotoxicity, an excellent biocompatibility, and biodegradability. In detail, the authors formulated *N*-octyl-*O,N*-carboxymethyl chitosan (OCC) and *N*-deoxycholic acid-*O,N*-hydroxyethylation chitosan (DAHC) micelles. Then, they conjugated the OCT on the *N*-terminal moiety of free carboxylic groups of OCC. The coupling had an extremely low (about 3%) yield, which is largely due to the high molecular weights of OCT and chitosan derivatives, due to the strong hydrogen bonds in the chitosan backbone, and due to poor solubility of chitosan derivatives in organic solvent. This result pushed toward alternative mixed aggregates, adding to DAHC a ligand-PEG-lipid conjugate able to guarantee same long circulation time in blood and ligand targeting. Both micelle types showed good DOX loading capability, with a drug loading content (DLC) in the 22–30% range. As an alternative strategy, the same authors anchored *N*-terminal peptides in solution to a PEG fragment and this moiety was conjugated to an aliphatic chain or to the deoxycholic acid obtaining the OCT(Phe)-PEG-SA (OPS) monomer or the OCT(Phe)PEG-DOCA (OPD), respectively [110].

More recently, OCT-functionalized unimolecular micelles were exploited to deliver thailandepsin-A (TDP-A) toward neuroendocrinal tumor cells. TDP-A is a relatively new naturally produced histone deacetylase (HDAC) inhibitor. Target selective micelles were obtained by the self-assembling of individual hyperbranched polymer molecules, consisting of a hyperbranched polymer core (Boltorn[®]H40) and approximately 25 amphiphilic polylactide-poly(ethylene glycol) (PLA-PEG) block copolymer arms covalently bound through the succinimidyl group (NHS) to octreotide (H40-PLA-PEG-OCT) b [111].

Helboketal. [112] synthesized an amphiphilic OCT derivative by cross-linking the *S*-acetyl-mercaptopropionic acid peptide

(SAMA-TOC) with the Mal-DSPE-PEG2000 phospholipid. Next mixed liposomes were obtained by adding to the OCT derivative adequate amounts of palmitoyl-oleoyl-phosphatidylcholine (POPC), lyso-stearyl-phosphatidylglycerol (Lyso-PG), distearyl phosphatidylcholine-polyethyleneglycol-2000 (DSPE-PEG2000), and dimyristoylphosphoethanolamine-DTPA (DMPE-DTPA) in a molar ratio of 0.1:11:7.5:0.9:2, respectively. These aggregates are usually employed in nuclear medicine applications radiolabeling with indium-111.

Octreotide-targeted liposomal doxorubicin was constructed with different ligand density by post-inserting HSPE-PEG4000-Octreotide into pre-formed liposomes. The octreotide ligand insertion was confirmed by the activity detection of octreotide in HSPE-PEG4000-Octreotide with synchronous fluorescence. Results indicated that an octreotide density around 1% could achieve the best uptake efficiency on NCI-H-446 and SMMC-7721 cell lines among the studied liposomes [113].

Similar properties were shown by the somatostatin [Tyr³]-octreotate (TATE) analogue. Petersenet al. [114] conjugated this peptide to maleimide, covalently attached to the distal end of DSPE-PEG2000 via a thioether bond. Targeted liposomes (DSPC/Chol/DSPE-PEG2000/DSPE-PEG2000-TATE in a molar ratio of 50:40:9:1, respectively), they encapsulated a positron emitter ⁶⁴Cu, as diagnostic agent for positron emission tomography (PET) imaging. Peptide-labeled liposomes displayed significantly higher tumor-to-muscle (T/M) ratio (12.7±1.0) compared to control-liposomes without TATE (8.9±0.9) and to the ⁶⁴CuDOTA-TATE peptide (7.2±0.3). These results reveal the feasibility of utilizing somatostatin analogs for specific targeting of the above-described aggregates to tumors overexpressing somatostatin receptors.

Very recently, TDP-A and AB3, new histone deacetylase inhibitors, they were encapsulated in the hydrophobic core of self-assembling micelles labeled with a somatostatin analog KE108 (PAMAM-PVL-PEG-OCH₃/Cy5/KE108) [115, 116]. This nonapeptide analogue contains the Phe-D-Trp-Lys-Thr motif, crucial for high-affinity somatostatin receptor binding like octreotide. Being formed by eight residues, the cycle size of this analog is larger than octreotide. It possesses high affinity to all five subtypes of SSTR. KE108 exhibited superior targeting ability in medullary thyroid cancer (MTC) cells, if compared to octreotide.

34.3.2.2.2 Bombesin receptors

The four receptor subtypes which are associated with the Bombesin-like peptides (BLP) family have been identified and found to be overexpressed in prostate, breast, small cell lung, [145] ovarian, and gastrointestinal stromal tumors [146]. A peptide able to bind these receptors is the bombesin (BN), which is constituted by 14 aminoacid residues. Its eight-residue C-terminal peptide sequence ([7-14]BN), reported in Fig. 34.4c, and many other BN analogs have been modified to selectively carry diagnostic or therapeutic agents to their receptors. They act both as agonists or antagonists. Many studies demonstrate that the [7-14]BN fragment and its analogues conjugated on the N-terminus with amino acid linkers, aliphatic or hydrophilic moiety, they all keep the affinity for receptors [147-149].

Despite the large overexpression of these receptors only few aggregates were developed. In the first example, Accardo et al. prepared mixed liposomes composed by two amphiphilic derivatives (C18)₂-L5-[7-14]BN (or (C18)₂-PEG3000-[7-14]BN) and (C18)₂-DOTA(¹¹¹In), both of them containing the same hydrophobic portion (two stearyl tails) and alternatively BN peptide or indium complex. The presence of a metal complex could allow to detect the *in vitro* fate of the liposome and its binding capability. Peptide was anchored to the alkyl chains through different ethoxylic spacers (L5 or PEG3000). These spacers permit to improve the hydrophilicity of the final monomer and to increase the bioavailability of the peptide sequence on the external surface of the liposome. It is worth noting how to perform a really active targeting, as it is relevant to consider the length of the ethoxylic region. In fact, a long chain hides the bioactive sequence [117]. Successively, the same authors synthesized DSPC-based liposomes derivatized by the pre-functionalization approach with the MonY-BNAA1 monomer containing [7-14]BN analogue, DOTA chelating agent and the alkyl chains in the same molecule. Specific binding capability and cytotoxicity of these targeted liposomes, loaded with DOX, were carried out in PC-3 xenograft-bearing mice. An inhibition of the tumor growth in mice treated with DSPC/MonY-BN/DOX targeted liposomes [118] was observed.

More recently, the same sequence was grafted to cholesterol by a click chemistry, following a post-insertion method. The liposome

obtained by mixing this monomer with DPPC was able to load subphthalocyanines (SubPc), an interesting hydrophobic probe for optical imaging, with a geometry that prevent aggregation [150]. An amphiphilic derivative of the [7–14]BN peptide was also used to prepare sterically stabilized mixed micelles (SSMMs) as drug delivery systems for gold(III) complexes (AUL12). The latter is already known for its *in vitro* and *in vivo* high antitumor activity, even in the CDDP-resistant cell lines. These micelles were able to encapsulate the hydrophobic metal complex with high loading efficiency while maintaining the gold (III) complex table in the +3 oxidation state over a period of 72 h. The *in vitro* binding ability and cytotoxicity of this target selective micelles were assessed in PC-3 cells overexpressing the GRP/bombesin receptors [119].

Anyway, circulation time *in vivo* of the [7–14]BN wild-type ($t_{1/2} = 15.5$ h) remains relatively short. This evidence led the same authors to develop a new peptide analog, BNAA1, in which $\text{Sta}^{13}\text{-Leu}^{14}$ and the Gly^{11} residue with the *N*-methyl-glycine replaced $\text{Leu}^{13}\text{-Met}^{14}$ residues. These changes were finalized to increase the resistance towards the aminopeptidase and carnitine enzymes. The labeled DSPC/MonY-BN-AA1/DOX liposomes reduce the tumor volume showing value reductions superior to 20% when compared to DSPC/MonY-BN/DOX liposomes [120].

34.3.2.2.3 CCK receptors

In neuroendocrine origin tumors, such as medullary thyroid cancers, it was found that both CCK1 and CCK2 receptors were overexpressed. The same phenomenon was found in small cell lung cancers and in gastroenteropancreatic (GEP) tumors. The peptide CCK8 is able to recognize both receptors.

In Fig. 34.4d, one can see the eight residue C-terminus sequence of the endogenous hormone cholecystokinin. The CCK8 can be tailored on *N*-terminus without affecting receptor binding. This feature is essentially due to the interaction of receptor *N*-terminal extra domain with the amino acid side chains. The latter lies on the *C*-terminal moiety of the peptide ligand, as demonstrated by solution NMR [151] and theoretical studies [152]. Based on these data, in the last 10 years, Accardo et al. developed a wide class of CCK8-decorated supramolecular aggregates (namely Naposomes), by anchoring the bioactive moiety through the *N*-terminus [107]. The exposition of the CCK8 peptide was assessed

by fluorescence measurements [153]. However, the peptide availability on surface aggregates is not an exclusive requirement for the receptor binding: the correct peptide conformation is crucial to assure high affinity and selectivity in ligand/protein binding processes. In this case, the CCK8 peptide needs to adopt a pseudo- α -helix conformation to give high binding affinity towards to the CCK1-R and CCK2-R receptors, according to the membrane-bound pathway theory [151]. The authors demonstrated that only peptide amphiphiles having an initial random coil conformation were able to adopt the pseudo- α -helix conformation in the presence of the receptor. Unlike them, peptides like (C18)₂-L₅CCK8, in which the peptide displays a β -sheet conformation, do not show *in vitro* cellular binding. Closing that chemical modification on the CCK8, the *N*-terminus seems to play an important role in stabilizing the peptide active conformation in self-assembling. The CCK8 amphiphilic monomers were combined with a second monomer containing the DOTA or DTPA chelating agent (general formula: (C18)₂-L₅CCK8 and (C18)₂-CA, respectively). The morphology and the size of the resulting aggregates (micelles, liposomes or open bilayers) are determined by several parameters, such as ionic strength, pH, monomer structure (length of polyoxyethylene spacers), composition, and formulation procedure (dissolution in buffered solution or well-assessed procedures based on sonication and extrusion) [107, 121, 154]. Moreover, these aggregates can play a double role as theranostic delivering contrast agents and drugs [155].

34.3.2.3 Supramolecular System Based on Disordered Linear Peptides

The design of supramolecular systems could drive the disordered peptides to fold into a stable structure. This structural modification could be a promising route to develop a new class of bio-molecules for processes in which a specific conformational rearrangement is required [156]. These considerations deserve an in-depth study of the intrinsic disorder of peptide behavior in solution and their performance on surface of nanostructures [157]. Recently, the authors have studied the structural preferences of linear synthetic peptides with CPC-containing sequences (chemokine receptor CXCR4) characterized by the presence of some unordered amino acids [158]. In particular, these studies showed the conformational

flexibility of both peptides, tested on the CXCR4 receptor through an indirect binding assay. Additionally, the authors tested the inhibition of CXCL12-induced migration and cAMP reduction. In addition, they proved how disordered peptides possess a stronger inhibitory capability on the adenilate cyclase, if compared to the AMD3100, which is, nowadays, the best characterized CXCR4 inhibitor. Trial evidence highlights that short, flexible peptides with no regular secondary structure can dynamically explore some conformational ensembles by targeting the chemokine receptor CXCR4. The employment of intrinsically disordered peptides could lie in the skill to control the transition between different structural states, especially as biosensors and in molecular recognition [159].

34.4 Conclusions

In this review, we have reported the most recent evidence on peptide-based drug-delivery systems in biotechnological applications. During the examination of the very rich literature data, several very remarkable and significant aspects have come into sight. Without a doubt, the extensive use of peptides to build more complex molecular constructs for biotechnological applications is well known. This is mostly due to their ease of achieving, and automation in, the synthesis of ad hoc designed sequences. In addition, peptides are also suitable for modification and control to gain desired biostructures in different aggregates. Additionally, several of their specific features allow operative research groups to obtain a broad variety of biotechnological materials. Furthermore, the option to arrange them in both linear and cyclic peptide sequences is worth mentioning; the likelihood to draw on side chains of the amino acid residues; the possibility to load on them charges and functional groups; and, finally, the intrinsic opportunity to arrange predictable physical and chemical patterns, suitable for biotechnological modular applications. In structured and/or disordered peptides, we can also consider the option of using conformational preferences: we can always put up micelles, liposomes, and gels based on peptides with preferential secondary dimensions and structures.

All these characteristics can also be engaged by means of bioactive sequences and/or through the recognition of post-translation moieties between biosystems. Therefore, it seems evident that the concrete possibilities that these biomaterials open up many sectors of peptide research, which can be engineered for specific applications in the various biotechnology sectors.

As said above, nature itself has elected amphiphilic molecules to generate life, by using them to circumscribe a portion of the environment. Indeed, surfactants constitute membranes able to contain biomolecules inside cells and they can select and transport molecules and ions. While imitating nature, amphiphilic peptides self-assemble into different nanostructures, such as vesicles, micelles, nanofibers, and nanotubes. In our guess, this is the way can play a key role in the production of new nanomaterials designed for biotechnological applications.

Abbreviations

5-FU:	5-fluorouracil
ADA:	alginate dialdehyde
APIs:	active pharmaceutical ingredients
Au NPs:	Au nanoparticles
AuNRs:	gold nanorods
BLP:	Bombesin-like peptides
BN:	bombesin
CA4:	combretastatin A4
CCK:	cholecystokinin
CDDP:	cisplatin
CLSM:	confocal laser scanning microscopy
cPNT:	cyclic peptide nanotubes
CPPs:	cell penetrating peptide
CPT:	camptothecin
CuAAC:	Cu(I)-catalyzed Huisgen cycloaddition
DAHC:	<i>N</i> -deoxycholic acid- <i>O,N</i> -hydroxyethylation chitosan
DLC:	drug loading content
DMPE-	dimyristoylphosphoethanolamine-
DTPA:	diethylenetriaminepentaacetic acid
DTPA:	diethylenetriaminepentaacetic acid

DOTA:	1,4,7,10-tetraazacyclododecane-1,4,7,10-tetraacetic acid
DOX:	doxorubicin
DTX:	docetaxel
ECM:	extracellular matrix
FA/MNPs:	folic acid/magnetic nanoparticles
FF:	Phe-Phe
FF-MTs:	FF-based microtubes
FFA:	flufenamic acid
GEP:	gastroenteropancreatic
GFRs:	growth factor receptors
GPCRs:	G-protein-coupled receptors
GRP:	gastrin-releasing peptides
HA:	hyaluronic acid
HDAC:	histone deacetylase
HES:	hydroxyethyl starch
HCPT:	hydroxycamphothecin
insulin-	
FITC:	insulin-fluorescein isothiocyanate
Lyso-PG:	lyso-stearyl-phosphatidylglycerol
Mal-PEG-b-P(Glu):	maleimide-conjugated poly(ethylene glycol)-b-poly(L-glutamic acid)
MD:	molecular dynamic simulations
MRI:	magnetic resonance imaging
MTC:	medullary thyroid cancer
NBD:	4-chloro-7-nitrobenzofurazan
NSAIDs:	non-steroidal anti-inflammatory drugs
OCC:	<i>N</i> -octyl- <i>O,N</i> -carboxymethyl chitosan
OCT:	octreotide
OPD:	OCT(Phe)PEG-DOCA
OPS:	OCT(Phe)-PEG-SA
PAs:	amphiphilic peptides
PCL:	polycaprolactone
PEG:	polyethylene glycol

PEG-PCL:	polyethylene glycol-polycaprolactone
PET:	positron emission tomography
PL:	photoluminescence
PLA-PEG:	polylactide-poly(-ethylene glycol)
PLL:	poly-L-lysine
POPC:	palmitoyl-oleoyl-phosphatidylcholine
PTX:	paclitaxel
SAL:	salinomycin
SSMMs:	sterically stabilized mixed micelles
SST:	somatostatin
TDP-A:	thailandepsin-A
UV:	ultraviolet

Disclosures and Conflict of Interest

This chapter was originally published as: Tesauro, D., Accardo, A., Diaferia, C. Milano, V., Guillon, J. Ronga, L. and Rossi, F. (2019). Peptide-based drug-delivery systems: Recent advances and perspectives, *Molecules*, **24**, 351, doi:10.3390/molecules24020351, under the Creative Commons Attribution license (<http://creativecommons.org/licenses/by/4.0/>). It appears here, with edits and updates, by kind permission of the authors and publisher, MDPI (Basel). The authors declare that they have no conflict of interest. No writing assistance was utilized in the production of this chapter and the authors have received no payment for it. This research was received external funding by Bando Vinci 2016, C4-4. Vittoria Milano thanks the Università Italo-Francese (UIF) for financial post-doc support (project Bando VINCI 2016, C4-4).

Corresponding Author

Dr. Filomena Rossi
Department of Pharmacy and CIRPeB
Università Federico II, 80134 Naples, Italy
Email: filomena.rossi@unina.it



References

1. Ruber Perez, C. M., Stephanopoulos, N., Sur, S., Lee, S. S., Newcomb, C., Stupp, S. I. (2015). The powerful functions of peptide-based bioactive matrices for regenerative medicine. *Ann. Biomed. Eng.*, **43**, 501–514.
2. Sahoo, S. K., Labhasetwar, V. (2003). Nanotech approaches to drug delivery and imaging. *Drug Discov. Today*, **8**, 1112–1120.
3. Panda, J. J., Chauhan, V. S. (2014). Short peptide based self-assembled nanostructures: Implications in drug delivery and tissue engineering. *Polym. Chem.*, **5**, 4418–4436.
4. Brack, A., Orgel, L. E. (1975). β structures of alternating polypeptides and their possible prebiotic significance. *Nature*, **256**, 383–387.
5. Potekhin, S. A., Melnik, T. N., Popov, V., Lanina, N. F., Vazina, A. A., Rigler, P., Verdini, A. S., Corradin, G., Kajava, A. V. (2001). De novo design of fibrils made of short α -helical coiled coil peptides. *Chem. Biol.*, **8**, 1025–1032.
6. Wagner, D. E., Philips, C. L., Ali, W. M., Nybakken, G. E., Crawford, E. D., Schwab, A. D., Smith, W. F., Fairman, R. (2005). Toward the development of peptide nanofilaments and nanopores as smart materials. *Proc. Natl. Acad. Sci. U.S.A.*, **102**, 12656–12661.
7. Moutevelis, E., Woolfson, D. N. (2009). A periodic table of coiled-coil protein structures. *J. Mol. Biol.*, **385**, 726–732.
8. Aggeli, A., Nyrkova, I. A., Bell, M., Harding, R., Carrick, L., McLeish, T. C. B., Semenov, A. N., Boden, N. (2001). Hierarchical self-assembly of chiral rod-like molecules as a model for peptide β -sheet tapes, ribbons, fibrils, and fibers. *Proc. Natl. Acad. Sci. U.S.A.*, **98**, 11857–11862.
9. Fishwick, C. W. G., Beevers, A. J. L., Carrick, M., Whitehouse, C. D., Aggeli, A., Boden, N. (2003). Structures of helical β -tapes and twisted ribbons: The role of side-chain interactions on twist and bend behavior. *Nano Lett.*, **3**, 1475–1479.
10. Aggeli, A., Bell, M., Carrick, L. M., Fishwick, C. W. G., Harding, R., Mawer, P. J., Radford, S. E., Strong, A. E., Boden, N. (2003). pH as a trigger of peptide β -sheet self-assembly and reversible switching between nematic and isotropic phases. *J. Am. Chem. Soc.*, **125**, 9619–9628.
11. Schneider, J. P., Pochan, D. J., Ozbas, B., Rajagopal, K., Pakstis, L., Kretsinger, J. (2002). Responsive hydrogels from the intramolecular


- folding and self-assembly of a designed peptide. *J. Am. Chem. Soc.*, **124**, 15030–15037.
12. Veiga, A. S., Sinthuvanich, C., Gaspar, D., Franquelim, H. G., Castanho, M. A. R. B., Schneider, J. P. (2012). Arginine-rich self-assembling peptides as potent antibacterial gels. *Biomaterials*, **33**, 8907–8916.
 13. Reches, M., Gazit, E. (2003). Casting metal nanowires within discrete self-assembled peptide nanotubes. *Science*, **300**, 625–627.
 14. Görbitz, C. H. (2006). The structure of nanotubes formed by diphenylalanine, the core recognition motif of Alzheimer's β -amyloid polypeptide. *Chem. Comm.*, **22**, 2332–2334.
 15. Tamamis, P., Adler-Abramovich, L., Reches, M., Marshall, K., Sikorski, P., Serpell, L., Gazit, E., Archontis, G. (2009). Self-assembly of phenylalanine oligopeptides: Insights from experiments and simulations. *Biophys. J.*, **96**, 5020–5029.
 16. Yan, X., Zhu, P., Li, J. (2010). Self-assembly and application of diphenylalanine-based nanostructures. *Chem. Soc. Rev.*, **39**, 1877–1890.
 17. Adler-Abramovich, L., Kol, N., Yanai, I., Barlam, D., Shneck, R. Z., Gazit, E., Rousso, I. (2010). Self-assembled organic nanostructures with metallic-like stiffness. *Angew. Chem. Int. Ed.*, **49**, 9939–9942.
 18. Wang, M., Du, L., Wu, X., Xiong, S., Chu, P. K. (2011). Charged diphenylalanine nanotubes and controlled hierarchical self-assembly. *ACS Nano*, **5**, 4448–4454.
 19. Vasilev, S., Zelenovskiy, P., Vasileva, D., Nuraeva, A., ShurYa, V., Kholkin, A. L. (2016). Piezoelectric properties of diphenylalaninemicrotubes prepared from the solution. *J. Phys. Chem. Solids*, **93**, 68–72.
 20. Nikitin, T., Kopyl, S., Shur, V. Y., Kopelevich, Y. V., Kholkin, A. L. (2016). Low-temperature photoluminescence in self-assembled diphenylalanine microtubes. *Phys. Lett. A*, **380**, 1658–1662.
 21. Handelman, A., Kuritz, N., Natan, A., Rosenman, G. (2005). Reconstructive phase transition in ultrashort peptide nanostructures and induced visible photoluminescence. *Langmuir*, **32**, 2847–2862.
 22. Handelman, A., Apter, B., Turko, N., Rosenman, G. (2016). Linear and nonlinear optical waveguiding in bio-inspired peptide nanotubes. *Acta Biomater.*, **30**, 72–77.
 23. Adler-Abramovich, L., Reches, M., Sedman, V. L., Allen, S., Tendler, S. J. B., Gazit, E. (2006). Thermal and chemical stability of diphenylalanine peptide nanotubes: Implications for nanotechnological applications. *Langmuir*, **22**, 1313–1320.

24. Marchesan, S., Vargiu, A. V., Styan, K. E. (2015). The Phe-Phe motif for peptide self-assembly in nanomedicine. *Molecules*, **20**, 19775–19788.
25. Adler-Abramovich, L., Aronov, D., Beker, P., Yevnin, M., Stempler, S., Buzhansky, L., Rosenman, G., Gazit, E. (2009). Self-assembled arrays of peptide nanotubes by vapour deposition. *Nat. Nanotechnol.*, **4**, 849–854.
26. Scanlon, S., Aggeli, A. (2008). Self-assembling peptide nanotubes. *Nano Today*, **3**, 22–30.
27. Hendler, N., Sidelman, N., Reches, M., Gazit, E., Rosenberg, Y., Richter, S. (2007). Formation of well-organized self-assembled films from peptide nanotubes. *Adv. Mater.*, **19**, 1485–1488.
28. Silva, R. F., Araujo, D. R., Silva, E. R., Ando, R. A., Alves, W. A. (2013). L-diphenylalanine microtubes as a potential drug-delivery system: characterization, release kinetics, and cytotoxicity. *Langmuir*, **29**, 10205–10212.
29. Bonetti, A., Pellegrino, S., Das, P., Yuran, S., Bucci, R., Ferri, N., Meneghetti, F., Castellano, C., Reches, M., Gelmi, M. L. (2015). Dipeptide nanotubes containing unnatural fluorine-substituted-diaryl amino acid and L-alanine as candidates for biomedical applications. *Org. Lett.*, **17**, 4468–4471.
30. Emtiazi, G., Zohrabi, T., Lee, L. Y., Habibi, N., Zarrabi, A. (2017). Covalent diphenylalanine peptide nanotube conjugated to folic acid/magnetic nanoparticles for anti-cancer drug delivery. *J. Drug Deliv. Sci. Technol.*, **41**, 90–98.
31. Liu, J., Liu, J., Chu, L., Zhang, Y., Xu, H., Kong, D., Yang, Z., Yang, C., Ding, D. (2014). Self-assembling peptide of D-amino acids boosts selectivity and antitumor efficacy of 10-hydroxycamptothecin. *ACS Appl. Mater. Interfaces*, **6**, 5558–5565.
32. Li, J., Gao, Y., Kuang, Y., Shi, J., Du, X., Zhou, J., Wang, H., Yang, Z., Xu, B. (2013). Dephosphorylation of D-peptide derivatives to form biofunctional, supramolecular nanofibers/hydrogels and their potential applications for intracellular imaging and intratumoral chemotherapy. *J. Am. Chem. Soc.*, **135**, 9907–9914.
33. Zhang, H., Fei, J., Yan, X., Wang, A., Li, J. (2015). Enzyme-responsive release of doxorubicin from monodisperse dipeptide-based nanocarriers for highly efficient cancer treatment *in vitro*. *Adv. Funct. Mater.*, **25**, 1193–1204.
34. Das, P., Yuran, S., Yan, J., Lee, P. S., Reches, M. (2015). Sticky tubes and magnetic hydrogels co-assembled by a short peptide and melanin-like nanoparticles. *Chem. Commun.*, **51**, 5432–5435.

35. Liberato, M. S., Kogikoski, S., da Silva, E. R., de Araujo, D. R., Guha, S., Alves, W. A. (2016). Polycaprolactone fibers with self-assembled peptide micro/nanotubes: A practical route towards enhanced mechanical strength and drug delivery applications. *J. Mater. Chem. B*, **4**, 1405–1413.
36. Li, Q., Chen, M., Chen, D., Wu, L. (2016). One-pot synthesis of diphenylalanine-based hybrid nanospheres for controllable pH- and GSH-responsive delivery of drugs. *Chem. Mater.*, **28**, 6584–6590.
37. Jayawarna, V., Ali, M., Jowitt, T. A., Miller, A. E., Saiani, A., Gough, J. E., Ulijn, R. V. (2006). Nanostructured hydrogels for three-dimensional cell culture through self-assembly of fluorenylmethoxycarbonyl-dipeptides. *Adv. Mater.*, **18**, 611–614.
38. Mao, L. N., Wang, H. M., Tan, M., Ou, L. L., Kong, D. L., Yang, Z. M. (2012). Conjugation of two complementary anti-cancer drugs confers molecular hydrogels as a co-delivery system. *Chem. Commun.*, **48**, 395–397.
39. Li, J., Kuang, Y., Gao, Y., Du, X., Shi, J., Xu, B. (2013). D-amino acids boost the selectivity and confer supramolecular hydrogels of a nonsteroidal anti-inflammatory drug (NSAID). *J. Am. Chem. Soc.*, **135**, 542–545.
40. Liang, G., Yang, Z., Zhang, R., Li, L., Fan, Y., Kuang, Y., Gao, Y., Wang, T., Lu, W. W., Xu, B. (2009). Supramolecular hydrogel of a D-amino acid dipeptide for controlled drug release *in vivo*. *Langmuir*, **25**, 8419–8422.
41. Erdogan, H., Yilmaz, M., Babur, E., Duman, M., Aydin, H. M., Demirel, G. (2016). Fabrication of plasmonic nanorod-embedded dipeptide microspheres via the freeze-quenching method for near-infrared laser-triggered drug-delivery applications. *Biomacromolecules*, **17**, 1788–1794.
42. Xie, Y., Zhao, J., Huang, R., Qi, W., Wang, Y., Su, R., He, Z. (2016). Calcium-ion-triggered co-assembly of peptide and polysaccharide into a hybrid hydrogel for drug delivery. *Nanoscale Res. Lett.*, **11**, 184.
43. Aviv, M., Halperin-Sternfeld, M., Grigoriants, I., Buzhansky, L., Mironi-Harpaz, I., Seliktar, D., Einav, S., Nevo, Z., Adler-Abramovich, L. (2018). Improving the mechanical rigidity of hyaluronic acid by integration of a supramolecular peptide matrix. *ACS Appl. Mater. Interfaces*, **10**(49), 41883–41891.
44. Abbas, M., Xing, R., Zhang, N., Zou, Q., Yan, X. (2018). Antitumor photodynamic therapy based on dipeptide fibrous hydrogels with

- incorporation of photosensitive drugs. *ACS Biomater. Sci. Eng.*, **4**, 2046–2052.
45. Roth-Konforti, M. E., Comune, M., Halperin-Sternfeld, M., Grigoriants, I., Shabat, D., Adler-Abramovich, L. (2018). UV light-responsive peptide-based supramolecular hydrogel for controlled drug delivery. *Macromol. Rapid Commun.*, **39**(24), 1800588.
 46. Diaferia, C., Balasco, N., Sibillano, T., Ghosh, M., Adler-Abramovich, L., Giannini, C., Vitagliano, L., Morelli, G., Accardo, A. (2018). Amyloid-like fibrillary morphology originated by tyrosine-containing aromatic hexapeptides. *Chem. Eur. J.*, **24**, 6804–6817.
 47. Diaferia, C., Balasco, N., Sibillano, T., Giannini, C., Vitagliano, L., Morelli, G., Accardo, A. (2018). Structural characterization of self-assembled tetra-tryptophan based nanostructures: variations on a common theme. *Chem. Phys. Chem.*, **19**, 1635–1642.
 48. Diaferia, C., Gianolio, E., Palladino, P., Arena, F., Boffa, C., Morelli, G., Accardo, A. (2015). Peptide materials obtained by aggregation of polyphenylalanine conjugates as gadolinium-based magnetic resonance imaging contrast agents. *Adv. Funct. Mater.*, **25**, 7003–7016.
 49. Accardo, A., Tesauro, D., Aloj, L., Pedone, C., Morelli, G. (2009). Supramolecular aggregates containing lipophilic Gd(III) complexes as contrast agents in MRI. *Coord. Chem. Rev.*, **253**, 2193–2213.
 50. Diaferia, C., Gianolio, E., Accardo, A., Morelli, G. (2017). Gadolinium containing telechelic PEG-polymers end-capped by di-phenylalanine motives as potential supramolecular MRI contrast agents. *J. Pept. Sci.*, **23**, 122–130.
 51. Diaferia, C., Gianolio, E., Sibillano, T., Mercurio, F. A., Leone, M., Giannini, C., Balasco, N., Vitagliano, L., Morelli, G., Accardo, A. (2017). Cross-beta nanostructures based on dinaphthylalanine Gd-conjugates loaded with doxorubicin. *Sci. Rep.*, **7**, 307.
 52. Handelman, A., Natan, A., Rosenman, G. (2014). Structural and optical properties of short peptides: Nanotubes-to-nanofibers phase transformation. *J. Pept. Sci.*, **20**, 487–493.
 53. Pinotsi, D., Buell, A. K., Dobson, C. M., Kaminski, G. S., Kaminski, C. F. (2013). A label-free, quantitative assay of amyloid fibril growth based on intrinsic fluorescence. *ChemBioChem*, **14**, 846–850.
 54. Diaferia, C., Sibillano, T., Balasco, N., Giannini, C., Roviello, V., Vitagliano, L., Morelli, G., Accardo, A. (2016). Hierarchical analysis of self-assembled PEGylated hexaphenylalanine photoluminescent nanostructures. *Chem. Eur. J.*, **22**, 16586–16597.

55. Diaferia, C., Sibillano, T., Altamura, D., Roviello, V., Vitagliano, L., Giannini, C., Morelli, G., Accardo, A. (2017). Structural characterization of PEGylated hexaphenylalanine nanostructures exhibiting green photoluminescence emission. *Chem. Eur. J.*, **23**, 14039–14048.
56. Diaferia, C., Sibillano, T., Giannini, C., Roviello, V., Vitagliano, L., Morelli, G., Accardo, A. (2017). Photoluminescent peptide-based nanostructures as FRET donor for fluorophore dye. *Chem. Eur. J.*, **23**, 8741–8748.
57. De Santis, P., Morosetti, S., Rizzo, R. (1974). Conformational analysis of regular enantiomeric sequences. *Macromolecules*, **7**, 52–58.
58. Ghadiri, M. R., Granja, J. R., Milligan, R. A., McRee, D. E., Khazanovich, N. (1993). Self-assembling organic nanotubes based on a cyclic peptide architecture. *Nature*, **366**, 324–327.
59. Chapman, R., Danial, M., Koh, M. L., Jolliffe, K. A., Perrier, S. (2012). Design and properties of functional nanotubes from the self-assembly of cyclic peptide templates. *Chem. Soc. Rev.*, **41**, 6023–6041.
60. Fernandez-Lopez, S., Kim, H. S., Choi, E. C., Delgado, M., Granja, J. R., Khasanov, A., Kraehenbuehl, K., Long, G., Weinberger, D. A., Wilcoxon, K. M., et al. (2001). Antibacterial agents based on the cyclic D,L- α -peptide architecture. *Nature*, **412**, 452–455.
61. Ishihara, Y., Kimura, S. (2010). Nanofiber formation of amphiphilic cyclic tri- β -peptide. *J. Pept. Sci.*, **16**, 110–114.
62. Hartgerink, J. D., Granja, J. R., Milligan, R. A., Ghadiri, M. R. (1996). Peptide-amphiphile nanofibers: A versatile scaffold for the preparation of self-assembling materials. *J. Am. Chem. Soc.*, **118**, 43–50.
63. Wang, Y., Yi, S., Sun, L., Huang, Y., Lenaghan, S. C., Zhang, M. (2014). Doxorubicin-loaded cyclic peptide nanotube bundles overcome chemoresistance in breast cancer cells. *J. Biomed. Nanotechnol.*, **10**, 445–454.
64. Hamley, I. W. (2011). Self-assembly of amphiphilic peptides. *Soft Matter*, **7**, 4122–4138.
65. Versluis, F., Marsden, H. R., Kros, A. (2010). Power struggles in peptide-amphiphile nanostructures. *Chem. Soc. Rev.*, **39**, 3434–3444.
66. Vauthey, S., Santoso, S., Gong, H., Watson, N., Zhang, S. (2002). Molecular self-assembly of surfactant-like peptides to form nanotubes and nanovesicles. *Proc. Natl. Acad. Sci. U.S.A.*, **99**, 5355–5360.
67. Santoso, S., Hwang, W., Hartman, H., Zhang, S. (2002). Self-assembly of surfactant-like peptides with variable glycine tails to form nanotubes and nanovesicles. *Nano Lett.*, **2**, 687–691.

68. Von Maltzahn, G., Vauthey, S., Santoso, S., Zhang, S. (2003). Positively charged surfactant like peptides self-assemble into nanostructures. *Langmuir*, **19**, 4332–4337.
69. Dehsorkhi, A., Castelletto, V., Hamley, I. W., Seitsonen, J., Ruokolainen, J. (2013). Interaction between a cationic surfactant-like peptide and lipid vesicles and its relationship to antimicrobial activity. *Langmuir*, **29**, 14246–14253.
70. Zhabing, S., Holmes, T., Lockshin, C., Rich, A. (1993). Spontaneous assembly of a self complementaryoligopeptide to form stable microscopic membrane. *Proc. Natl. Acad. Sci. U.S.A.*, **90**, 3334–3338.
71. Liu, E., Wang, H., Shang, Y., Liu, M., Chen, P. (2012). Molecular binding self assembling peptide EAK16-II with anticancer agent EPT and its implication in cancer cell inhibition. *J. Control. Release*, **160**, 33–40.
72. Boettcher, C., Schade, B., Fuhrhop, J. H. (2001). Comparative cryo-electron microscopy of noncovalent *N*-dodecanoyl-(D- and L-) serine assemblies in vitreous toluene and water. *Langmuir*, **17**, 873–877.
73. Fuhrhop, J. H., Spiroski, D., Boettcher, C. (1993). Molecular monolayer rods and tubules made of α -(L-lysine), ω -(amino) bolaamphiphiles. *J. Am. Chem. Soc.*, **115**, 1600–1601.
74. Hartgerink, J. D., Beniash, E., Stupp, S. I. (2002). Peptide-amphiphilic nanofibers: A versatile scaffold for the preparation of self-assembling materials. *Proc. Natl. Acad. Sci. U.S.A.*, **99**, 5133–5138.
75. Matson, J. B., Newcomb, C. J., Bitton, R., Stupp, S. I. (2012). Nanostructure-templated control of drug release from peptide amphiphile nanofiber gels. *Soft Matter*, **8**, 3586–3595.
-  76. Cui, H., Muraoka, T., Cheetham, A. G., Stupp, S. I. (2009). Self-assembly of giant peptide. *Nano Lett.*, **9**(3) 945–951.
77. Yao, C., Liu, J. Y., Wu, X., Tao, Z. G., Gao, Y., Zhu, Q. G., Li, J. F., Zhang, L. J., Hu, C. L., Gu, F. F., et al. (2016). Reducible self-assembling cationic polypeptide-based micelles mediate co-delivery of doxorubicin and microRNA-34a for androgen-independent prostate cancer therapy. *J. Control. Release*, **232**, 203–214.
78. Tang, Q., Cao, B., Wu, H., Cheng, G. (2013). Cholesterol-peptide hybrids to form liposome-like vesicles for gene delivery. *PLoS One*, **8**.
79. Missirlis, D., Krogstad, D. V., Tirrell, M. (2010). Subsequent endosomal disruption results in SJS-1. *Mol. Pharm.*, **7**, 2173–2184.
80. Pujals, S., Fernandez-Carneado, J., Lopez-Iglesias, C., Kogan, M. J., Giral, E. (2006). Mechanistic aspects of cell-penetrating peptide-

- mediated intracellular drug delivery: Relevance of CPP self-assembly. *Biochim. Biophys. Acta Biomembr.*, **1758**, 264–279.
81. Agrawal, P., Bhalla, S., Usmani, S. S., Singh, S., Chaudhary, K., Raghava, G. P., Gautam, A. (2016). CPPsite 2.0: Arepository of experimentally validated cell-penetrating peptides. *Nucleic Acids Res.*, **44**, D1098–D1103.
 82. Borrelli, A., Tornesello, A. L., Tornesello, M. L., Buonaguro, F. M. (2018). Cell penetrating peptides as molecular carriers for anti-cancer agents. *Molecules*, **23**, 295.
 83. Sun, H., Dong, Y., Feijen, J., Zhong, Z. (2018). Peptide-decorated polymeric nanomedicines for precision cancer therapy. *J. Control. Release*, **290**, 11–27.
 84. Gallo, M., Defaus, S., Andreu, D. (2019). 1988–2018: Thirty years of drug smuggling at the nano scale. Challenges and opportunities of cell-penetrating peptides in biomedical research. *Arch. Biochem. Biophys.*, **661**, 74–86.
 85. Zhang, Q., Tang, J., Fu, L., Ran, R., Liu, Y., Yuan, M., He, Q. (2013). A pH-responsive α -helical cell penetrating peptide-mediated liposomal delivery system. *Biomaterials*, **34**, 7980–7993.
 86. Liu, Z., Xiong, M., Gong, J., Zhang, Y., Bai, N., Luo, Y., Li, L., Wei, Y., Liu, Y., Tan, X. (2014). Legumain protease-activated TAT-liposome cargo for targeting tumours and their microenvironment. *Nat. Commun.*, **5**, 4280.
 87. Yang, Y., Yang, Y., Xie, X., Cai, X., Mei, X. (2014). Preparation and characterization of photo-responsive cell-penetrating peptide-mediated nanostructured lipid carrier. *J. Drug Target.*, **22**, 891–900.
 88. Reubi, J. C. (2003). Peptide receptors as molecular targets for cancer diagnosis and therapy. *Endocr. Rev.*, **24**, 389–427.
 89. Accardo, A., Ringhieri, P., Palumbo, R., Morelli, G. (2014). Influence of PEG length on conformational and binding properties of CCK peptides exposed by supramolecular aggregates. *Pept. Sci.*, **102**, 304–312.
 90. Ginj, M., Zhang, H., Waser, B., Cescato, R., Wild, D., Wang, X., Erchegyi, J., Rivier, J., Macke, H. R., Reubi, J. C. (2006). Radiolabeled somatostatin receptor antagonists are preferable to agonists for *in vivo* peptide receptor targeting of tumors. *Proc. Natl. Acad. Sci. U.S.A.*, **103**, 16436–16441.
 91. Chan, K.Y., Vermeersch, S., de Hoon, J., Villalón, C.M., Maassenvandenbrink, A. (2011). Potential mechanisms of prospective antimigraine drugs: A focus on vascular (side) effects. *Pharmacol. Ther.*, **129**, 332–351.

92. Allen, F. H., Pitchford, N. A. (1998). Conformational analysis from crystallographic data. In: Codding, P. W., ed. *Structure Based Drug Design*, Kluwer Academic, Dordrecht, The Netherlands, pp. 15–26.
93. Pande, J., Szewczyk, M. M., Grover, A. K. (2010). Phage display: Concept, innovations, applications and future. *Biotechnol. Adv.*, **28**, 849–858.
94. Ringhieri, P., Mannucci, S., Conti, G., Nicolato, E., Fracasso, G., Marzola, P., Morelli, G., Accardo, A. (2017). Liposomes derivatized with multimeric copies of KCCYSL peptide as targeting agents for HER-2-overexpressing tumor cells. *Int. J. Nanomed.*, **12**, 501–514.
95. Ringhieri, P., Diaferia, C., Galdiero, S., Palumbo, R., Morelli, G., Accardo, A. (2015). Liposomal doxorubicin doubly functionalized with CCK8 and R8 peptide sequences for selective intracellular drug delivery. *J. Pept. Sci.*, **21**, 415–425.
96. Accardo, A., Ringhieri, P., Tesauro, D., Morelli, G. (2013). Liposomes derivatized with tetrabranchedneurotensin peptides via click chemistry reactions. *New J. Chem.*, **37**, 3528–3534.
97. Accardo, A., Morelli, G. (2015). Review peptide-targeted liposomes for selective drug delivery: Advantages and problematic issues. *Pept. Sci.*, **104**, 462–479.
98. Feldborg, L. N., Jølck, R. I., Andresen, T. L. (2012). Quantitative evaluation of bioorthogonal chemistries for surface functionalization of nanoparticles. *Bioconjug. Chem.*, **23**, 2444–2450.
99. Wang, Y., Yang, T., Wang, X., Wang, J., Zhang, X., Zhang, Q. (2010). Targeted polymeric micelle system for delivery of combretastatin A4 to tumor vasculature *in vitro*. *Pharm. Res.*, **27**, 1861–1868.
100. Miura, Y., Takenaka, T., Toh, K., Wu, S., Nishihara, H., Kano, M. R., Ino, Y., Nomoto, T., Matsumoto, Y., Koyama, H., et al. (2013). Cyclic RGD-linked polymeric micelles for targeted delivery of platinum anticancer drugs to glioblastoma through the blood-brain tumor barrier. *ACS Nano*, **7**, 8583–8592.
101. Chen, Z., Deng, J., Zhao, Y., Tao, T. (2012). Cyclic RGD peptide-modified liposomal drug delivery system: Enhanced cellular uptake *in vitro* and improved pharmacokinetics in rats. *Int. J. Nanomed.*, **7**, 3803–3811.
102. Amin, M., Badiie, A., Jaafari, M. R. (2013). Improvement of pharmacokinetic and antitumor activity of PEGylated liposomal doxorubicin by targeting with N-methylated cyclic RGD peptide in mice bearing C-26 colon carcinomas. *Int. J. Pharm.*, **458**, 324–333.

103. Wang, F., Chen, L., Zhang, R., Chen, Z., Zhu, L. (2014). RGD peptide conjugated liposomal drug delivery system for enhance therapeutic efficacy in treating bone metastasis from prostate cancer. *J. Control. Release*, **196**, 222–233.
104. Battistini, L., Burreddu, P., Sartori, A., Arosio, D., Manzoni, L., Paduano, L., D'Errico, G., Sala, R., Reia, L., Bonomini, S., et al. (2014). Enhancement of the uptake and cytotoxicactivity of doxorubicin in cancercells by novel cRGD-semipeptide-anchoring liposomes. *Mol. Pharm.*, **11**, 2280–2293.
105. Zhang, J., Hon, J. H., Chan, F., Skibba, M., Liang, G., Chen, M. (2016). RGD decorated lipid-polymer hybrid nanoparticles for targeted co-delivery of doxorubicin and sorafenib to enhance anti-hepatocellular carcinoma efficacy. *Nanomed. Nanotechnol. Biol. Med.*, **12**, 1303–1311.
106. Morisco, A., Accardo, A., Gianolio, E., Tesauro, D., Benedetti, E., Morelli, G. (2009). Micelles derivatized with octreotide as potential target-selective contrast agents in MRI. *J. Pept. Sci.*, **15**, 242–250.
107. Accardo, A., Morisco, A., Tesauro, D., Pedone, C., Morelli, G. (2011). Naposomes: A new class of peptide-derivatized, target-selective multimodal nanoparticles for imaging and therapeutic applications. *Ther. Deliv.*, **2**, 235–257.
108. Accardo, A., Mangiapia, G., Paduano, L., Morelli, G., Tesauro, D. (2013). Octreotide labeled aggregates containing platinum complexes as nanovectors for drug delivery. *J. Peptsci.*, **19**, 190–197.
109. Zhang, Y., Zhang, H., Wang, X., Wang, J., Zhang, X., Zhang, Q. (2012). The eradication of breast cancer and cancer stem cells using octreotide modified paclitaxel active targeting micelles and salinomycin passive targeting micelles. *Biomaterials*, **33**, 679–691.
110. Zou, A., Chen, Y., Huo, M., Wang, J., Zhang, Y., Zhou, J., Zhang, Q. (2013). *In vivo* studies of octreotidemodified N-octyl-O, N-carboxymethyl chitosan micelles loaded with doxorubicin for tumor-targeted delivery. *J. Pharm. Sci.*, **102**, 126–135.
111. Jaskula-Sztul, R., Xu, W., Chen, G., Harrison, A., Dammalapati, A., Nair, R., Cheng, Y., Gong, S., Chen, H. (2016). Thailandepsin A-loaded and octreotide-functionalized unimolecular micelles for targeted neuroendocrine cancer therapy. *Biomaterials*, **91**, 1–10.
112. Helbok, A., Rangger, C., von Guggenberg, E., Saba-Lepek, M., Radolf, T., Thurner, G., Andreae, F., Prassl, R., Decristoforo, C. (2012). Targeting properties of peptide-modified radiolabeled liposomal nanoparticles. *Nanomedicine*, **8**, 112–118.

113. Li, H., Yuan, D., Minjie, S., Ping, Q. (2016). Effect of ligand density and PEG modification on octreotide-targeted liposome via somatostatin receptor *in vitro* and *in vivo*. *Drug Deliv.*, **23**, 3562–3572.
114. Petersen, A. L., Binderup, T., Jølk, R. I., Rasmussen, P., Henriksen, J. R., Pfeifer, A. K., Kjær, A., Andresen, T. L. (2012). Positron emission tomography evaluation of somatostatin receptor targeted ⁶⁴Cu-TATE-liposomes in a human neuroendocrine carcinoma mouse model. *J. Control. Release*, **160**, 254–263.
115. Chen, G., Jaskula-Sztul, R., Harrison, A., Dammalapati, A., Chen, H., Gong, S., Xube, W., Cheng, Y. (2016). KE108-conjugated unimolecular micelles loaded with a novel HDAC inhibitor thailandepsin-A for targeted neuroendocrine cancer therapy. *Biomaterials*, **97**, 22–33.
116. Jaskula-Sztul, R., Chen, G., Dammalapati, A., Harrison, A., Tang, W., Gong, S., Chen, H. (2017). AB3-loaded and tumor-targeted unimolecular micelles for medullary thyroid cancer treatment. *J. Mater. Chem. B*, **5**, 151–159.
117. Accardo, A., Mansi, R., Morisco, A., Mangiapia, G., Paduano, L., Tesauro, D., Radulescu, A., Aurilio, M., Aloj, L., Arra, C., et al. (2010). Peptide modified nanocarriers for selective targeting of bombesin receptors. *Mol. Biosyst.*, **6**, 878–887.
118. Accardo, A., Salzano, G., Morisco, A., Aurilio, M., Parisi, A., Maione, F., Cicala, C., Tesauro, D., Aloj, L., De Rosa, G., et al. (2012). Peptide-modified liposomes for selective targeting of bombesin receptors overexpressed by cancer cells: A potential theranostic agent. *Int. J. Nanomed.*, **7**, 2007–2017.
119. Ringhieri, P., Iannitti, R., Nardon, C., Palumbo, R., Fregona, D., Morelli, G., Accardo, A. (2014). Target selective micelles for bombesin receptors incorporating Au(III)-dithiocarbamate complexes. *Int. J. Pharmaceut.*, **473**, 194–202.
120. Accardo, A., Mansi, R., Salzano, G., Morisco, A., Aurilio, M., Parisi, A., Maione, F., Cicala, C., Ziaco, B., Tesauro, D., et al. (2013). Bombesin peptide antagonist for target-selective delivery of liposomal doxorubicin on cancer cells. *J. Drug Target.*, **21**, 240–249.
121. Accardo, A., Tesauro, D., Morelli, G., Gianolio, E., Aime, S., Vaccaro, M., Mangiapia, G., Paduano, L., Schillen, K. (2007). High-relaxivity supramolecular aggregates containing peptide and Gd complexes agents in MRI. *J. Biol. Inorg. Chem.*, **12**, 267–276.
122. Gasparini, G., Brooks, P. C., Biganzoli, E., Vermeulen, P. B., Bonoldi, E., Dirix, L. Y., Ranieri, G., Miceli, R., Cheresch, D. A. (1998). Vascular integrin

- $\alpha_v\beta_3$: A new prognostic indicator in breast cancer. *Clin. Cancer Res.*, **4**, 2625–2634.
123. Liu, S. (2006). Radiolabeled multimeric cyclic RGD peptides as integrin alphavbeta3 targeted radiotracers for tumor imaging. *Mol. Pharm.*, **3**, 472–487.
124. Xiong, X. B., Huang, Y., Lu, W. L., Zhang, X., Zhang, H., Nagai, T., Zhang, Q. (2005). Enhanced intracellular delivery and improved antitumor efficacy of doxorubicin by sterically stabilized liposomes modified with a synthetic RGD mimetic. *J. Control. Release*, **107**, 262–275.
125. Danhier, F., Le Breton, A., Pr eat, V. (2012). RGD-based strategies to target alpha(v) beta(3) integrin in cancer therapy and diagnosis. *Mol. Pharm.*, **9**, 2961–2973.
126. Schifflers, R. M., Koning, G. A., ten Hagen, T. L. M., Fens, M. H. A. M., Schraa, A. J., Janssen, A. P. C. A., Kok, R. J., Molema, G., Storm, G. (2003). Anti-tumor efficacy of tumor vasculature-targeted liposomal doxorubicin. *J. Control. Release*, **91**, 115–122.
127. Murphy, E. A., Majeti, B. K., Barnes, L. A., Makale, M., Weis, S. M., Lutu-Fuga, K., Wrasidlo, W., Cheres, D. A. (2008). Nanoparticle-mediated drug delivery to tumor vasculature suppresses metastasis. *Proc Natl. Acad. Sci. U.S.A.*, **105**, 9343–9348.
128. Guan, X., Hu, X., Liu, S., Sun, X., Gai, X. (2008). Cyclic 6RGD targeting cisplatin micelles for near-infrared imaging-guided chemotherapy. *RSC Adv.*, **6**, 1151–1157.
129. Zhao, H., Wang, J.-C., Sun, Q.-S., Luo, C.-L., Zhang, Q. (2009). RGD-based strategies for improving antitumor activity of paclitaxel-loaded liposomes in nude mice xenografted with human ovarian cancer. *J. Drug Target.*, **17**, 10–18.
130. Meng, S., Su, B., Li, W., Ding, Y., Tang, L., Zhou, W., Song, Y., Li, H., Zhou, C. (2010). Enhanced antitumor effect of novel dual-targeted paclitaxel liposomes. *Nanotechnology*, **21**, 415103.
131. Li, Y., Zheng, X., Sun, Y., Ren, Z., Li, X., Cui, G. (2014). RGD-fatty alcohol-modified docetaxel liposomes improve tumor selectivity *in vivo*. *Int. J. Pharm.*, **468**, 133–141.
132. Pattillo, C. B., Sari-Sarraf, F., Nallamotheu, R., Moore, B. M., Wood, G. C., Kiani, M. F. (2005). Targeting of the antivascular drug combretastatin to irradiated tumors results in tumor growth delay. *Pharm. Res.*, **22**, 1117–1120.

133. Dubey, P. K., Mishra, V., Jain, S., Mahor, S., Vyas, S. P. (2004). Liposomes modified with cyclic RGD peptide for tumor targeting. *J. Drug Target.*, **12**, 257–264.
134. Garg, A., Tisdale, A. W., Haidari, E., Kokkoli, E. (2009). Targeting colon cancer cells using PEGylated liposomes modified with a fibronectin-mimetic peptide. *Int. J. Pharm.*, **366**, 201–210.
135. Kessler, H., Kutscher, B., Klein, A. (1986). Peptidkonformationen, 39. NMR-studien zur konformation von cyclopentapeptidanalogen des thymopointins. *Liebigs Ann. Chem.*, **1986**, 893–913.
136. Kessler, H., Diefenbach, B., Finsinger, D., Geyer, A., Gurrath, M., Goodman, S. L., Hölzemann, G., Haubner, R., Jonczyk, A., Müller, G., et al. (1995). Design of superactive and selective integrin receptor antagonists containing the RGD sequence. *Lett. Pep. Sci.*, **2**, 155–166.
137. Haubner, R., Gratias, R., Diefenbach, B., Goodman, S., Jonczyk, A., Kessler, H. (1996). Structural and functional aspects of RGD-containing cyclic pentapeptides as highly potent and selective integrin $\alpha_3\beta_1$ antagonists. *J. Am. Chem. Soc.*, **118**, 7461–7472.
138. Wang, Y., Wang, X., Zhang, Y., Yang, S., Wang, J., Zhang, X., Zhang, Q. (2009). RGD-modified polymeric micelles as potential carriers for targeted delivery to integrin-overexpressing tumor vasculature and tumor cells. *J. Drug Target.*, **17**, 459–467.
139. Kazuki, N., TambatTeessalu, S., Karmali, P. P., Kotamraju, V. R., Agemy, L., Girard, O. M., Hanahan, D., Mattrey, R. F., Ruoslahti, E. (2009). Tissue-penetrating delivery of compounds and nanoparticles into tumors. *Cancer Cell*, **6**, 510–520.
140. Gao, F., Zhang, J., Fu, C., Xie, X., Peng, F., You, J., Tang, H., Wang, Z., Li, P., Chen, J. (2017). iRGD-modified lipid-polymer hybrid nanoparticles loaded with isoliquiritigenin to enhance anti-breast cancer effect and tumor-targeting ability. *Int. J. Nanomed.*, **12**, 4147–4162.
141. Jiang, Y., Pang, X., Liu, R., Xiao, Q., Wang, P., Leung, A. W., Luan, Y., Xu, C. (2018). Design of an amphiphilic RGD peptide and self-assembling nanovesicles for improving tumor accumulation and penetration and the photodynamic efficacy of the photosensitizer. *ACS Appl. Mater. Interfaces*, **10**, 31674–31685.
142. Hu, H., Wan, J., Huang, X., Tang, Y., Xiao, C., Xu, H., Yang, X., Li, Z. (2018). iRGD-decorated reduction-responsive nanoclusters for targeted drug delivery. *Nanoscale*, **10**, 10514–10527.
143. Lamberts, S. W. (1998). *Octreotide: The Next Decade*, BioScientifica: Bristol, UK.

144. Melacini, G., Zhu, Q., Goodman, M. (1997). Multiconformational NMR analysis of sandostatin (octreotide): Equilibrium between beta-sheet and partially helical structures. *Biochemistry*, **36**, 1233–1241.
145. Cuttitta, F., Carney, D. N., Mulshine, J., Moody, T. W., Fedorko, J., Fischler, A., Minna, J. D. (1985). Bombesin-like peptides can function as autocrine growth factors in human small-cell lung cancer. *Nature*, **16**, 823–826.
146. Patel, O., Shulkes, A., Baldwin, G. S. (2006). Gastrin-releasing peptide and cancer. *Biochim. Biophys. Acta*, **1766**, 23–41.
147. Smith, C. J., Volkert, W. A., Hoffman, T. J. (2005). Radiolabeled peptide conjugates for targeting of the bombesin receptor superfamily subtypes. *Nucl. Med. Biol.*, **32**, 733–740.
148. Parry, J. J., Kelly, T. S., Andrews, R., Rogers, B. E. (2007). *In vitro* and *in vivo* evaluation of ⁶⁴Cu-labeled DOTA-linker-bombesin(7–14) analogues containing different amino acid linker moieties. *Bioconjug. Chem.*, **18**, 1110–1117.
149. Jamous, M., Tamma, M. L., Gourni, E., Waser, B., Reubi, J. C., Maecke, H. R., Mansi, R. (2014). RPEG spacers of different length influence the biological profile of bombesin-based radiolabeled antagonists. *Nucl. Med. Biol.*, **41**, 464–470.
150. Bernhard, Y., Gigot, E., Goncalves, V., Moreau, M., Sok, N., Richard, P., Decréau, R. A. (2016). Direct subphthalocyanine conjugation to bombesin vs. indirect conjugation to its lipidic nanocarrier. *Org. Biomol. Chem.*, **14**, 4511–4518.
151. Pellegrini, M., Mierke, D. F. (1999). Molecular complex of cholecystinin-8 and N-terminus of the cholecystinin A receptor by NMR spectroscopy. *Biochemistry*, **38**, 14775–14783.
152. Morelli, G., De Luca, S., Tesauro, D., Saviano, M., Pedone, C., Dolmella, A., Visentin, R., Mazzi, U. (2002). CCK8 peptide derivatized with diphenylphosphine for rhenium labelling: Synthesis and molecular mechanics calculations. *Pept. Sci.*, **8**, 373–381.
153. Accardo, A., Morisco, A., Palladino, P., Palumbo, R., Tesauro, D., Morelli, G. (2011). Amphiphilic CCK peptides assembled in supramolecular aggregates: Structural investigations and *in vitro* studies. *Mol. Biosyst.*, **7**, 862–870.
154. Tesauro, D., Accardo, A., Gianolio, E., Paduano, L., Teixeira, J., Schillen, K., Aime, S., Morelli, G. (2007). Peptide derivatized lamellar aggregates as target-specific MRI contrast agents. *ChemBioChem*, **8**, 950–995.

155. Accardo, A., Tesauero, D., Aloj, L., Tarallo, L., Arra, C., Mangiapia, G., Vaccaro, M., Pedone, C., Paduano, L., Morelli, G. (2008). Peptide-containing aggregates as selective nanocarriers for therapeutics. *Chem. Med. Chem.*, **3**, 594–602.
156. Vincenzi, M., Accardo, A., Costantini, S., Scala, S., Portella, L., Trotta, A., Ronga, L., Guillon, J., Leone, M., Colonna, G., et al. (2015). Intrinsically disordered amphiphilic peptides as potential targets in drug delivery vehicles. *Mol. Biosyst.*, **11**, 2925–2932.
157. Accardo, A., Leone, M., Tesauero, D., Aufiero, R., Bénarouche, A., Cavalier, J. F., Longhi, S., Carriere, F., Rossi, F. (2013). Solution conformational features and interfacial properties of an intrinsically disordered peptide coupled to alkyl chains: A new class of peptide amphiphiles. *Mol. Biosyst.*, **9**, 1401–1410.
158. Vincenzi, M., Costantini, S., Scala, S., Tesauero, D., Accardo, A., Leone, M., Colonna, G., Guillon, J., Portella, L., Trotta, A., et al. (2015). Conformational ensembles explored dynamically from disordered peptides targeting chemokine receptor CXCR4. *Int. J. Mol. Sci.*, **16**, 12159–12173.
159. Banta, S., Megeed, Z., Casali, M., Rege, K., Yarmush, M. L. (2007). Engineering protein and peptide building blocks for nanotechnology. *J. Nanosci. Nanotechnol.*, **7**, 387–401.