



**Changes in Cortical N-methyl-D-aspartate receptors and Postsynaptic Density Protein 95 in Schizophrenia, Mood Disorders and Suicide**

Journal:	<i>Australian and New Zealand Journal of Psychiatry</i>
Manuscript ID:	ANP-2014-00338.R2
Manuscript Type:	Research
Date Submitted by the Author:	02-Mar-2015
Complete List of Authors:	Dean, Brian; Florey Institute of Neuroscience and Mental Health, Molecular Psychiatry Laboratories Gibbons, Andrew; Florey Institute of Neuroscience and Mental Health, Molecular Psychiatry Laboratories Boer, Simone; Florey Institute of Neuroscience and Mental Health, Molecular Psychiatry Laboratories Uezato, Akihito; Tokyo Medical and Dental University, Tokyo, Department of Psychiatry and Behavioral Sciences Meador-Woodruff, James; University of Alabama Birmingham, Department of Psychiatry Scarr, Elizabeth; University of Melbourne, Psychiatry McCullumsmith, Robert; University of Cincinnati, Psychiatry
Keywords:	Schizophrenia, Bipolar disorder, Major depressive disorder, NMDA, Cortex

SCHOLARONE™  
Manuscripts

Changes in Cortical ~~the~~ N-methyl-D-aspartate receptors and  
Postsynaptic Density Protein 95 in Schizophrenia, Mood Disorders and  
Suicide

**Running Title:** Changes in Cortical NMDA Receptors and PSD 95 Protein in Schizophrenia,  
Mood Disorders and Suicide

Brian Dean<sup>a\*</sup>, Andrew S. Gibbons<sup>a</sup>, Simone Boer<sup>a</sup>, Akihito Uezato<sup>b</sup>, James Meador-Woodruff<sup>c</sup>,  
Elizabeth Scarr<sup>d</sup> and Robert E McCullumsmith<sup>e</sup>

<sup>a</sup>Molecular Psychiatry Laboratory, Florey Institute for Neuroscience and Mental Health, 30 Royal  
Parade, Parkville, Victoria 3010, Australia (emails: BD [brian.dean@florey.edu.au](mailto:brian.dean@florey.edu.au); ASG  
[agibbons@unimelb.edu.au](mailto:agibbons@unimelb.edu.au); SB [saboer16@hotmail.com](mailto:saboer16@hotmail.com))

<sup>b</sup>Department of Psychiatry and Behavioral Sciences, Tokyo Medical and Dental University,  
Tokyo, Japan (email: [uezato-tmd@umin.ac.jp](mailto:uezato-tmd@umin.ac.jp))

<sup>c</sup>Department of Psychiatry, University of Alabama Birmingham, Birmingham, AL, USA (email:  
[jimmw@uab.edu](mailto:jimmw@uab.edu))

<sup>d</sup>Psychiatric Neuropathology Laboratory, Department of Psychiatry, University of Melbourne,  
Parkville, Victoria, Australia (email: [elscarr@unimelb.edu.au](mailto:elscarr@unimelb.edu.au))

<sup>e</sup>Department of Psychiatry, University of Cincinnati, Cincinnati, OH, USA (email:  
[MCCULLRR@ucmail.uc.edu](mailto:MCCULLRR@ucmail.uc.edu))

**Corresponding Author:** Professor Brian Dean, The Molecular Psychiatry Laboratory, The  
Florey Institute for Neuroscience and Mental Health, 30 Royal Parade, Parkville, Victoria 3052,  
Australia

Telephone: 614-8344-3786; Email: [brian.dean@florey.edu.au](mailto:brian.dean@florey.edu.au)

**Abstract**

*Objectives:* In humans, depending on dose, blocking the N-methyl-D-aspartate receptor (NMDAR) with ketamine ~~can cause has been shown to be either~~ psychomimetic or ~~to have~~ antidepressant effects. The overall outcome for drugs such as ketamine is depends dose and the number of its available binding sites in the CNS and to understand something of the latter variable we measure NMDAR in the frontal pole, dorsolateral prefrontal (DLPFC), anterior cingulate (ACx) and parietal cortices from people with schizophrenia, bipolar disorder (BD), major depressive disorders (MDD) and age / sex matched controls.

*Method:* ~~We The ketamine data in humans led us to measured~~ levels of NMDARs (using [<sup>3</sup>H]MK-801 binding) and NMDAR sub-unit mRNAs (GRIN2C: using *in situ* hybridisation) as well as in the frontal pole as well as the dorsolateral prefrontal (DLPFC), anterior cingulate (ACx) and parietal cortices from people with schizophrenia, bipolar disorder (BPDBD), major depressive disorders (MDD) and age / sex matched controls. We also measured levels of post-synaptic density protein 95 (PSD 95: ACx only; not MDD: a NMDAR post-synaptic associated protein) in ; a NMDAR post-synaptic associated protein, in ACx from people with BPDBD, schizophrenia and controls.

*Results:* Compared to controls, levels of NMDAR were lower in lamina I to III plus a portion of laminae IV in DLPFC (-17%,  $p = 0.01$ ) in people with schizophrenia. In ~~BPDBD~~, levels of NMDAR in lamina IV – VI (-19%,  $p < 0.01$ ) and GRIN2C mRNA (-27%,  $p < 0.05$ ) were lower in the ACx and NMDAR was lower in lamina I to III plus a portion of laminae IV in the DLPFC (-19%,  $p < 0.01$ ). In MDD, levels of GRIN2D mRNA were higher in frontal pole (+22%,  $p < 0.05$ ). In suicide completers, levels of GRIN2B mRNA were higher in parietal cortex (+20%,  $p < 0.01$ ) but lower (-35%,  $p = 0.02$ ) in DLPFC whilst PSD 95 was higher (+26%,  $p < 0.05$ ) in ACx.

1  
2  
3  
4  
5  
6  
7  
8  
9  
10  
11  
12  
13  
14  
15  
16  
17  
18  
19  
20  
21  
22  
23  
24  
25  
26  
27  
28  
29  
30  
31  
32  
33  
34  
35  
36  
37  
38  
39  
40  
41  
42  
43  
44  
45  
46  
47  
48  
49  
50  
51  
52  
53  
54  
55  
56  
57  
58  
59  
60

*Conclusions:* These data suggest ~~differences diagnostic specific changes~~ in cortical NMDAR expression and PSD 95 ~~are present in could contribute to the aetiologies of~~ psychiatric disorders ~~and suicide completion and may contribute to , suicidal ideation and~~ different responses to ketamine.

Keywords: schizophrenia major depressive disorders bipolar disorders cortex  
NMDA

For Review Only

## Highlights

- Lower NMDAR receptors in lamina I to III plus a portion of laminae IV in DLPFC from people with schizophrenia (-17%,  $p = 0.01$ ).
- Lower NMDAR in laminae IV - VI in ACx (-19%,  $p < 0.01$ ) and lamina I to III plus a portion of laminae IV in DLPFC from people with bipolar disorders (-19%,  $p < 0.01$ ).
- Lower GRIN2C mRNA in ACx from people with bipolar disorders (-27%,  $p < 0.05$ ).
- Higher GRIN2D mRNA in frontal pole from major depressive disorders (+22%,  $p < 0.05$ ).
- Higher GRIN2B mRNA in parietal cortex (+20%,  $p < 0.01$ ) from suicide completers.
- Lower GRIN2B mRNA in DLPFC (-35%,  $p = 0.02$ ) from suicide completers.
- Higher levels of PSD 95 (+26%,  $p < 0.05$ ) in ACx from suicide completers.

**Abbreviations:** ACx = anterior cingulate cortex, BA = Brodmann's area, ~~BPD~~BD = bipolar disorders, CNS = central nervous system, DLPFC = dorsolateral prefrontal cortex, DI = duration of illness, ETE = estimated tissue equivalent, fmol / g = femtomoles mRNA per gram tissue, FRADD = final recorded dose of antipsychotic drug, IC = internal control, LEAP = lifetime exposure to antipsychotic drugs, MDD = major depressive disorder, NMDAR = N-methyl-D-aspartate receptor, NSB = non-specific binding, PMI = post-mortem interval, PSD 95 = post synaptic density 95, TB = total binding.

## 1.0 Introduction

~~In humans, ketamine has been shown to have rapid acting antidepressant effects and to be psychomimetic (Abdallah et al., 2015). Recent studies have shown that, in humans, ketamine can be psychotomimetic (Malhotra et al., 1997) or have antidepressant effects (aan het Rot et al., 2012). Significantly, the major action of ketamine is to block the N-methyl-D-aspartate receptor (NMDAR), an ionotropic glutamate receptor (Sucher et al. 1996). Thus, these neuropsychopharmacological data add significant weight to the argument that the activity of the NMDAR can contribute to the severity of psychiatric symptoms. Moreover, the ability of the same drug to have different behavioural effects in humans suggests it may be acting differently in people with different psychiatric conditions, that is as a psychotomimetic in people who are not depressed and as an antidepressant in those with depression.~~

The NMDAR is a ligand gated ion channel made up of heteromeric complexes formed from different combinations of three families of sub-units, the families of sub-units have been given the nomenclatures of GRIN1, GRIN2 and GRIN3 (Paoletti and Neyton, 2007). It is now generally accepted that a functional NMDAR is a tetramer of sub-units that must include at least one GRIN1 and one GRIN2 with differing combinations of sub-units conferring different functionality (Paoletti and Neyton, 2007). This growing understanding of the structure of the NMDAR has allowed increasingly sophisticated studies using postmortem central nervous system (CNS) tissue designed to understand how the NMDAR may be affected by the aetiology of psychiatric disorders. The neuropsychopharmacological outcome from administering any drug is dependent on dose and the number of available targets sites for the drug in CNS (Ruffolo, Jr., 1982). Thus, whilst the clinical useful antidepressant outcome of ketamine is known to be dose dependent (Abdallah et al., 2015) less is known as to whether any of its effects could be due to diagnostic-dependent variation in levels of NMDAR.

1  
2  
3  
4  
5  
6 Studies in schizophrenia have reported higher (Deakin et al., 1989; Grimwood et al., 1999;  
7  
8 Ishimaru et al., 1994; Newell et al., 2005; Nudmamud and Reynolds, 2001; Zavitsanou et al.,  
9  
10 2002), unchanged (Beneyto and Meador-Woodruff, 2008; Dean et al., 1999a; Kornhuber et al.,  
11  
12 1989; Scarr et al., 2005) or lower (Nudmamud et al., 2003) levels of NMDAR in different cortical  
13  
14 regions. There are equally varied outcomes from studies measuring levels of NMDAR sub-unit  
15  
16 mRNA in the cortex of subjects with the disorder (Supplementary Table 1). Changes in the level  
17  
18 of NMDAR sub-unit expression is only one mechanism by which the levels or activity of the  
19  
20 NMDAR can occur (Gladding and Raymond, 2011). It is therefore significant that more recent  
21  
22 studies have suggested changes in the post-translational processing of NMDAR sub-units may be  
23  
24 occurring in the CNS of people with schizophrenia. For example, in the cortex of people with  
25  
26 schizophrenia it has been reported there is a decreased GRIN2B and PSD 95 in the endoplasmic  
27  
28 reticulum (Kristiansen et al., 2010), changes in *N*-linked glycosylation of NMDAR sub-units  
29  
30 (Tucholski et al., 2013) and changes in the types of cells expressing NMDAR sub-units  
31  
32 (Bitanhirwe et al., 2010; Woo et al., 2008). These post-translational modifications and / or  
33  
34 differential cellular expression of NMDAR would clearly altered glutamate homeostasis in the  
35  
36 CNS of people with the disorder.

37  
38 There have been fewer studies of NMDAR in mood disorders. However, one study has reported  
39  
40 lower levels of radioligand binding to the glycine binding site on the NMDAR in people with  
41  
42 bipolar disorders (~~BPPBD~~) (Nudmamud-Thanoi and Reynolds, 2004) Outcomes from studies on  
43  
44 NMDAR sub-units in ~~BPPBD~~ are varied but the majority report levels of NMDAR sub-unit  
45  
46 mRNA are not changed in the disorder (Supplementary Table 1). There is also a report that levels  
47  
48 of NMDAR are not changed in major depressive disorder (MDD) (Holemans et al., 1993) and  
49  
50 most studies report unchanged levels of NMDAR sub-unit mRNA (Supplementary Table 1).  
51  
52  
53  
54  
55  
56  
57  
58  
59  
60

1  
2  
3  
4  
5  
6 Whilst there have been a number of studies on NMDAR in postmortem CNS, none seem to have  
7  
8 measured levels of NMDAR and mRNA for its more abundant sub-units in tissue from subjects  
9  
10 with schizophrenia, ~~BPDBD~~ and MDD to begin to understand the changes in these markers in  
11  
12 different cortical regions in people with different psychiatric disorders. We posited that such data  
13  
14 could also help understand whether any of the effects of ketamine, or the dose of ketamine  
15  
16 required to cause advantageous effects, could be influenced by having different psychotropic  
17  
18 outcomes because of diagnostic specific changes in NMDAR levels. Hence, we decided to  
19  
20 measure levels of NMDAR, its sub-units and a protein associated with NMDAR function (post  
21  
22 synaptic density 95: PSD 95) in areas of the cortex from people with psychiatric disorders (see  
23  
24 below).

## 25 26 27 28 **2.0 Materials and methods**

### 29 30 31 32 **2.1 Materials**

33  
34  
35  
36  
37  
38 See Supplementary ~~Text~~Methods

### 39 40 41 42 **2.2 Tissue Collection**

43  
44  
45  
46  
47 For these studies, tissue was collected from frontal pole (Brodmann's Area (BA 10), the DLPFC  
48  
49 (BA 46)), the anterior cingulate cortex (ACx: BA 24) and the parietal cortex (BA 40) from 10  
50  
51 people with ~~BPDBD~~, 10 people with MDD, 20 people with schizophrenia and 20 subjects with no  
52  
53 history of psychiatric illness (controls) matched for age and sex to the psychiatric cases (Regions  
54  
55



1  
2  
3  
4  
5  
6 defined in Supplementary ~~Text~~Methods). Suicide completion was recorded when suicide was  
7  
8 formally recognised in the Coroner's report on cause of death. Tissue was obtained from the  
9  
10 Victorian Brain Bank Network following approval from the Ethics Committee of the Victorian  
11  
12 Institute of Forensic Medicine and the Mental Health Research and Ethics Committee of  
13  
14 Melbourne Health.

15  
16  
17  
18  
19 Diagnoses were made according to DSM-IV criteria, following case history reviews using the  
20  
21 Diagnostic Instrument for Brain Studies (DIBS) (Hill et al., 1996; Roberts et al., 1998), by  
22  
23 consensus between a psychologist and a senior psychiatrist. While completing the DIBS,  
24  
25 duration of illness (DI) was calculated as time from first clinical presentation to a psychiatric  
26  
27 service to death. In addition, the final recorded dose of antipsychotic drug (FRADD) was  
28  
29 recorded and converted to chlorpromazine equivalents using a well-established methodology  
30  
31 (Foster, 1989), as was total lifetime exposure to these drugs (LEAP). Notably, all cadavers were  
32  
33 refrigerated within 5 hr. of being found. When death was witnessed, post-mortem interval (PMI)  
34  
35 was calculated as the time from death to autopsy. Where death was not witnessed, tissue was only  
36  
37 collected from subjects who had been seen alive up to 5 hr. prior to being found dead; here the  
38  
39 PMI was taken as the midpoint between the person being found and being last seen alive. As well  
40  
41 as maintaining cases at low temperatures for most of their PMI, tissue was rapidly processed and  
42  
43 frozen to -70°C within 30 min of autopsy (Dean et al., 1999b); processing tissue in this way  
44  
45 significantly slows autolytic changes (Ferrer et al., 2007). CNS pH was measured as described  
46  
47 previously (Kingsbury et al., 1995) as this provides a good measure of overall tissue quality (Stan  
48  
49 et al., 2006).

### 50 51 52 **2.3 [<sup>3</sup>H]MK-801 In Situ Radioligand Binding with Autoradiography**

53  
54

1  
2  
3  
4  
5  
6  
7  
8 The conditions used for these studies were the same as our previous study (Scarr et al., 2003),  
9 meaning that [<sup>3</sup>H]MK-801 would bind with high specificity to the ion channel of the NMDAR  
10 (Reynolds, 2001) ~~(For full details see Supplementary Methods). First, 5 x 20µm frozen tissue~~  
11 ~~sections (3 x total binding (TB) and 2 x non-specific binding (NSB)) were incubated in assay~~  
12 ~~buffer (50 mM TRIS acetate, 100 µM glutamate, 50 µM glycine, 50 µM spermidine; pH 7.4) for~~  
13 ~~30 min at 4°C and then rinsed in water and dried. The washed sections were exposed to [<sup>3</sup>H]MK-~~  
14 ~~801 (0.2 µM) in the absence (TB) or presence (NSB) of 100µM MK 801 for 60 min at room~~  
15 ~~temperature in assay buffer and then washed twice for 10 min in ice cold assay buffer, rinsed in~~  
16 ~~ice cold water and dried in a stream of cool air before being partially fixed overnight in~~  
17 ~~paraformaldehyde vapour (Pavey et al., 2002).~~

18  
19  
20  
21  
22  
23  
24  
25  
26  
27  
28  
29 Partially fixed slides were apposed to a BAS TR2025 plate with autoradiography  
30 [<sup>3</sup>H]microsecales<sup>TM</sup> for 7 days, the plates were then scanned in a BAS5000 high resolution  
31 phosphorimage and the resulting images analysed using AIS imaging software. The distribution  
32 of the binding of radioligand in each region of the cortex was carefully assessed, both visually and  
33 by placing a transept across each cortex to obtain a binding profile. This determined whether  
34 binding could be differentiated into distinct layers within the grey matter. Subsequently,  
35 radioligand binding was either taken as an integrated measurement across the whole cortex or a  
36 measure within each layer of binding. In all cases, signal intensity were calibrated against the  
37 microsecales to allow the bound radioligand to be expressed as a function of an equivalent amount  
38 of tissue (estimated tissue equivalent (ETE)) (Dean et al., 1999b). Specific [<sup>3</sup>H]MK 801 binding  
39 was calculated by subtracting NSB from TB for each subject.  
40  
41  
42  
43  
44  
45  
46  
47  
48  
49  
50  
51  
52  
53  
54  
55  
56  
57  
58  
59  
60

Formatted: No widow/orphan control, Adjust space between Latin and Asian text, Adjust space between Asian text and numbers

Formatted: Space After: 0 pt, No widow/orphan control, Adjust space between Latin and Asian text, Adjust space between Asian text and numbers

## 2.4 *In Situ* Hybridisation

Riboprobes for the NMDAR subunits GRIN1, GRIN2A–2D and GRIN3A were synthesized from previously characterized plasmid constructs (Beneyto et al., 2007). (For full details see Supplementary Methods). ~~To prepare the riboprobes, 8 µl of [<sup>35</sup>S] UTP was dried, suspended in a 10 µl reaction volume containing 1x transcription buffer, 0.01 M DTT, 3 mM ATP, CTP, and GTP, 2.0 µl linearized plasmid DNA, 0.5 µl RNase inhibitor, and 1.5 µl SP6 or T7 RNA polymerase and incubated for 2 h at 37°C. 1.0 µl DNase was added to the reaction mixture and incubated for 15 min at RT. Radiolabeled probes were purified with microspin chromatography columns. Two slides per subject for each antisense probe were fixed in 4% formaldehyde at RT for 1 hr. The slides were washed thrice in 2x SSC (300 mM NaCl, 30 mM sodium citrate, pH 7.2) for 5 min, washed in water for 1 min and placed in 0.1 M triethanolamine, pH 8.0 / acetic anhydride, 400:1 (vol. : vol.) for 10 min. The slides were washed in 2x SSC for 5 min followed by dehydration through graded alcohols and air dried for 30 min. A cover slip with 200 µl of riboprobe (2 million c.p.m., 50% formamide buffer (50% formamide, 10% dextran sulfate, 3x SSC, 50 mM Na<sub>2</sub>HPO<sub>4</sub> (pH 7.4), 10 mM dithiothreitol, 1x Denhardt's solution, 100 µg / ml yeast tRNA), and 0.01 M dithiothreitol) was placed on each slide. Slides were hybridized overnight at 55°C in a covered chamber containing 50% formamide saturated filter paper. Cover slips were removed and the slides were placed in 2x SSC for 5 min followed by RNase (200 µg / ml in 10 mM Tris HCl (pH 8.0) and 0.5 M NaCl) at 37 °C for 30 min and then washed in 2x SSC for 15 min at RT; 2x SSC for 15 min at RT; 1x SSC for 10 min at RT; 0.5 x SSC for 5 min at RT; 0.1 x SSC for 60 min at 55 °C; 0.1 x SSC for 60 min at 55°C; and 0.5 x SSC for 15 min at RT. The slides were dehydrated in graded ethanol solutions, air dried, placed in X ray cassettes, and apposed to Kodak XAR-5 film for 2–60 days alongside a [<sup>14</sup>C] microscale standard.~~

~~Film was developed and used for quantitative computer image analysis. An integrated measure was taken across the cortical gray matter with tissue background readings being subtracted from grayscale values. Background corrected values were averaged, providing one mean value per region, per subject, for each probe. Background adjusted, averaged grayscale values were expressed as femtomoles mRNA per gram tissue (fmol/g).~~

## 2.5 Western Blotting

~~As levels of PSD-95 can be associated with NMDAR density we followed~~Following the lead from the region-specific changes in [<sup>3</sup>H]MK-801 binding ~~and we~~measured PSD 95 in the ACx from people with schizophrenia, ~~BPDBD~~ and controls. Levels of PSD 95 were essentially measured using methodologies we have developed (Dean et al., 2006; Dean et al., 2010; Scarr et al., 2006) ~~to address the that acknowledge the~~ difficulties in ~~finding~~ reference proteins to normalize data (Eaton et al., 2013) ~~in human CNS (for full details see Supplementary Methods).~~ Thus, ~~to maximise the reproducibility of the data, total protein levels were carefully measured in each homogenate that underwent electrophoresis after tissue from each case was homogenized tissue into 10 mM Tris (pH 7.4) 1% SDS, 1 mM Na<sub>3</sub>VO<sub>4</sub>.~~ A sample of each homogenate containing 20 µg protein was loaded, in duplicate, onto a 7.5% polyacrylamide gel along with a protein homogenate from an independent cortical sample (internal control: IC (Dean et al., 2006)) ~~that had previously undergone electrophoresis, transfer and visualization to establish and expected intra and inter gel variation. The protein in each gel were then transferred overnight to a nitrocellulose membrane and each membrane was stained with Ponceau S solution and examined to further ensure no major variations in protein loading. After destaining, the membranes were blocked for 1 hr. at RT in 1x TTBS + 5% NFMP (20 mM TRIS HCl, pH 7.6, 137 mM NaCl, 0.1% Tween 20, 5% non fat milk powder). The membranes were incubated in 1:1000 rabbit anti-~~

1  
2  
3  
4  
5  
6 PSD 95 for 2 hrs., washed thrice for 5 min in 1x TTBS + 5% NFMP incubated for 1 hr. in 1:2000  
7  
8 goat anti-rabbit secondary antibody, washed thrice for 5 min in 1x TTBS + 5% NFMP and rinsed  
9  
10 in 1x TTBS. The membranes were then exposed to Supersignal West Pico ECL substrate and the  
11  
12 resulting sum intensity of the immunogenic band was quantified as a ratio of the intensity of the  
13  
14 internal control using a Kodak Image Station with Kodak 1D Image Analysis Software. As a  
15  
16 final quality control, for each gel, the intensity of the IC needed to be within the previously  
17  
18 defined range determined during the methodological optimization; data was discarded from gels  
19  
20 where the IC were outside of the acceptable range.  
21  
22  
23

## 24 2.6 Statistics

25  
26  
27  
28  
29 Given well recognised difficulties in assessing the distribution of data when sample sizes are  
30  
31 small (D'Agostino et al., 1990), and that biological variables tend to be normally distributed  
32  
33 (McKillup, 2006), statistical analyses were completed using parametric analyses. Thus, variation  
34  
35 in experimental, donor demographic, drug and CNS collection data were assessed using Graphpad  
36  
37 Prism and either one-way ANOVA followed by a post hoc Dunnett's multiple comparison test  
38  
39 comparing data for each diagnoses to control for experimental data and Tukey's comparing all  
40  
41 columns for other data or student t-tests (if 2 cohorts). The sex ratios and rates of suicide in the  
42  
43 different cohorts were compared using a Fisher's exact test. Relationships between experimental  
44  
45 variables and demographic, tissue collection and pharmacological data were assessed using linear  
46  
47 regression. Small sample sizes mean that strong relationships, as assessed using linear regression  
48  
49 analyses, need to have an  $r^2 > 0.49$  (Cook and Weisberg, 1999). If strong relationships were  
50  
51 revealed, and there was no variation in the non-experimental data with diagnoses (Miller and  
52  
53 Chapman, 2001), the variation in the experimental data was re-assessed using the General Linear  
54  
55 Model with the appropriate non-experimental data as a covariant(s).

### 3.0 Results

#### 3.1 Demographic Data

Mean age ( $F = 0.68$ ,  $d.f. = 3,55$ ,  $p = 0.57$ ), PMI ( $F = 0.97$ ,  $d.f. = 3,55$ ,  $p = 0.41$ ), CNS pH ( $F = 0.48$ ,  $d.f. = 3,55$ ,  $p = 0.69$ ) and DI ( $F = 0.27$ ,  $d.f. = 3,55$ ,  $p = 0.77$ ) did not vary between diagnostic cohorts (Table 1: [full details Supplementary Table 2](#)).

There was no difference in the ratio of males to females between the diagnostic groups ( $p = 0.99$ : Table 1). There were significant differences in rates of suicide between diagnostic cohorts ( $p < 0.0001$ ) due to a significantly higher incidence of suicide in subjects with schizophrenia and MDD compared to controls. As suicide was an unresolvable confound, all experimental data was also analysed with suicide completion, independent of diagnoses, as the primary variable.

#### 3.2 General Findings

In the human cortex two layers of [ $^3\text{H}$ ]MK-801 binding were detectable (Figure 1A and 1B) and thus a section from each case was stained with Nissl stain and viewed under a microscope to determine which laminae of the cortex were encompassed by the outer and inner layer of [ $^3\text{H}$ ]MK801 binding. This showed that the outer layer of [ $^3\text{H}$ ]MK-801 binding overlaid cortical laminae I to III plus a portion of laminae IV. The inner layer of [ $^3\text{H}$ ]MK-801 binding overlaid the remainder of laminae IV plus laminae V and VI.

1  
2  
3  
4  
5  
6 As described previously, levels of GRIN1 mRNA was highest in all cortical regions studied  
7  
8 (Scherzer et al., 1998). Consistent with this previous study, levels of the other NMDAR sub-unit  
9  
10 mRNA varied between cortical regions where they were present at low to medium levels.  
11

### 12 13 14 15 **3.3 Schizophrenia** 16

17  
18  
19  
20 There were lower levels of [<sup>3</sup>H]MK-801 binding (-17%; p = 0.01) in the outer, but not inner, layer  
21  
22 of the DLPFC from people with schizophrenia (Figure 1C; Supplementary Table 23). There were  
23  
24 no other significant variations in levels of [<sup>3</sup>H]MK-801 binding in people with the disorder  
25  
26 (Supplementary Table 23). There were no changes in the levels of hybridisation of radioactive  
27  
28 probes bound to NMDAR sub-unit mRNA in cortex from people with schizophrenia  
29  
30 (Supplementary Table 34). Levels of PSD 95 were not significantly different in the ACx from  
31  
32 people with the disorder (Control = 0.62 ± 0.05 vs. schizophrenia = 0.70 ± 0.06 ratio internal  
33  
34 control: p = 0.31).  
35  
36  
37  
38

### 39 **3.3 Bipolar Disorders** 40 41 42 43

44 There were lower levels of [<sup>3</sup>H]MK-801 binding in the outer, but not inner, layers of in the  
45  
46 DLPFC (- 19 %; p < 0.01) and the inner layer of the ACx (-19 %; p < 0.01) from people with  
47  
48 **BPDBD** (Figure 1C; [Supplementary Table 23](#)). There was no other significant variation in  
49  
50 [<sup>3</sup>H]MK-801 binding in **BPDBD** ([Supplementary Table 23](#)). The level of hybridisation of  
51  
52 radioactive probes to GRIN2C mRNA was lower (-13% ) in ACx from people with **BPDBD**  
53  
54 (Figure 2; [Supplementary Table 34](#)); there were no other significant changes in the levels of  
55

1  
2  
3  
4  
5  
6 hybridisation to NMDAR sub-unit mRNA. Levels of PSD 95 were not significantly different in  
7  
8 the ACx from people with the disorder (Control =  $0.62 \pm 0.05$  vs. ~~BPDBD~~ =  $0.57 \pm 0.08$  ratio  
9  
10 internal control:  $p = 0.61$ ).

### 11 12 **3.4 Major Depressive Disorders**

13  
14  
15  
16 There was no significant variation in levels of [ $^3$ H]MK-801 binding in the outer or inner layer in  
17  
18 any cortical region from people with MDD (Supplementary Table 23). By contrast, levels  
19  
20 radioactive probe hybridisation to GRIN2D mRNA was higher (+29%) in frontal pole from  
21  
22 people with MDD (Figure 2; Supplementary Table 34), there were no changes in the levels of  
23  
24 hybridisation in MDD.

### 25 26 27 28 **3.5 Suicide**

29  
30  
31  
32  
33 Levels of [ $^3$ H]MK-801 binding did not differ between people who had, or had not, died by suicide  
34  
35 (Supplementary Table 45). By contrast, levels of radioactive probe hybridized to the GRIN2B  
36  
37 sub-unit of the NMDAR was higher (25%) in parietal cortex and lower (-35%) in DLPFC from  
38  
39 suicide completers (Figure 3; Supplementary Table 56), there were no other significant changes in  
40  
41 levels of oligonucleotide riboprobes with suicide. The differences in levels of GRIN2B mRNA  
42  
43 remained significant when analysed after removal of data from the controls, none of whom had  
44  
45 died by suicide (parietal cortex  $0.13 \pm 0.01$  vs  $0.18 \pm 0.02$ ;  $p < 0.01$ ; DLPFC  $0.40 \pm 0.02$  vs.  $0.31$   
46  
47  $\pm 0.02$ ;  $p = 0.05$ ). In the ACx, levels of PSD 95 were higher (26%) in suicide completers  
48  
49 compared to those who had died by other causes (Figure 4). The differences in levels of PSD 95  
50  
51 remained significant after removal of data from the controls, none of whom had died by suicide  
52  
53 (ACx  $0.84 \pm 0.06$  vs  $0.60 \pm 0.06$ ;  $p < 0.05$ ). Whilst it would have been interesting to analyse the  
54  
55



1  
2  
3  
4  
5  
6 suicide effect within each diagnoses sample sizes were not large enough to allow such an analyses  
7  
8 to have any predictive power.  
9

### 10 11 12 13 **3.6 Potential Confounds** 14 15

16  
17 Levels of [<sup>3</sup>H]MK-801 binding, hybridisation of radioactive probes to NMDA receptor sub-unit  
18 mRNA or PSD 95 (Male = 0.70 ± 0.05 vs. Female = 0.58 ± 0.05 ratio internal control; p = 0.11)  
19 did not differ with gender in any of the cortical regions examined (Supplementary Table [6-7](#) and  
20 [78](#)). There were no strong correlations between [<sup>3</sup>H]MK-801 binding (Supplementary Table [89](#)),  
21 hybridisation of radioactive probes to NMDA receptor sub-unit mRNA (Supplementary Table  
22 [910](#)) or PSD 95 ( age ( $r^2 = 0.39$ ;  $p < 0.001$ ), PMI ( $r^2 < 0.001$ ;  $p = 0.93$ ), DI ( $r^2 = 0.09$ ;  $p = 0.93$ ),  
23 CNS pH ( $r^2 = 0.003$ ;  $p = 0.69$ ), FRADD ( $r^2 = 0.03$ ;  $p = 0.69$ ) or LEAP ( $r^2 = 0.007$ ;  $p = 0.13$ )) with  
24 any potential confounds.  
25  
26  
27  
28  
29  
30  
31  
32  
33

34  
35 There were a number of correlations between experimental variables where a regression line  
36 defining the relationships deviated significantly from the horizontal (i.e.  $p < 0.05$ : Supplementary  
37 Table [1011](#)). One correlation where there was a  $p < 0.05$  across all cortical regions was between  
38 the level of [<sup>3</sup>H]MK-801 binding in the two cortical binding layers which showed a strong levels  
39 of correlation in the frontal pole, ACx and DLPFC. The other correlation with  $p < 0.05$  across all  
40 regions was level of GRIN1 and GRIN2B mRNA (from  $r^2 = 0.11$  to 0.16).  
41  
42  
43  
44  
45  
46  
47

### 48 49 **4.0 Discussion** 50 51 52 53 54 55

1  
2  
3  
4  
5  
6 A major finding of this study is that there were significantly lower levels of [<sup>3</sup>H]MK-801 binding to the  
7 outer lamina of the DLPFC from people with schizophrenia, and as [<sup>3</sup>H]MK-801 would have been  
8 almost exclusively binding to the NMDAR (Wong et al., 1986), our data suggests there are lower  
9 levels of NMDAR in the outer cortical lamina in DLPFC from people with the disorder. As our  
10 findings are restricted to specific cortical laminae within certain cortical regions any comparisons  
11 to other studies must be tentative but worthwhile to put our findings into some context. Thus,  
12 these data differ from our previous studies that showed no changes in NMDAR in the DLPFC  
13 from people with schizophrenia (Dean et al., 1999a; Scarr et al., 2005). This could be because  
14 our current study is in BA 46 whereas our previous studies were in BA 9 (Dean et al., 1999a;  
15 Scarr et al., 2005) and that loss of NMDAR only occurs in a portion of the DLPFC. Thus, it is  
16 also possible that previous reports of higher (Deakin et al., 1989; Grimwood et al., 1999; Ishimaru  
17 et al., 1994; Newell et al., 2005; Nudmamud and Reynolds, 2001; Zavitsanou et al., 2002),  
18 unchanged (Beneyto and Meador-Woodruff, 2008; Dean et al., 1999a; Kornhuber et al., 1989;  
19 Scarr et al., 2005) or lower (Nudmamud et al., 2003) levels of NMDAR in different cortical  
20 regions could be reflecting these regional selective changes. Our current data also suggests that  
21 the lower levels of NMDAR in the outer lamina of DLPFC from people with schizophrenia is not  
22 associated with any significant changes in levels of receptor sub-unit mRNA. This suggests the  
23 changes in NMDAR in the outer layers of the DLPFC is not due to decreased NMDAR sub-unit  
24 expression and that our data is in agreement with other studies reporting no change in NMDAR  
25 sub-unit mRNA in in the cortex of people with schizophrenia (Supplementary Table 1) but does  
26 not agree with other studies that report changes in levels of GRIN mRNAs (Akbarian et al., 1996;  
27 Dracheva et al., 2001; Kristiansen et al., 2006; Mueller and Meador-Woodruff, 2004; Woo et al.,  
28 2008b).

29  
30  
31  
32  
33  
34  
35  
36  
37  
38  
39  
40  
41  
42  
43  
44  
45  
46  
47  
48  
49  
50  
51  
52 Contrary to a previous study (Funk et al., 2009), we did not find lower levels of PSD 95 in the  
53 ACx from people with schizophrenia. Significantly, PSD 95 has been reported to be higher in the

1  
2  
3  
4  
5  
6 occipital cortex (Dracheva et al., 2001) and lower in the DLPFC (Kristiansen et al., 2010) from  
7  
8 people with schizophrenia. Thus, it would seem that, as for other components of the  
9  
10 glutamatergic system, there are regionally selective changes in PSD 95 in the cortex of people  
11  
12 with schizophrenia.

13  
14  
15  
16  
17  
18  
19 Another major finding of this study is that there were significantly lower levels of NMDAR in the inner  
20  
21 lamina of the ACx and outer lamina of the DLPFC from people with BPDBD. This finding is in line  
22  
23 with an earlier study that reported lower levels of radioligand binding to the glycine binding site on the  
24  
25 NMDAR in the in people with BPDBD (Nudmamud-Thanoi and Reynolds, 2004). We also showed  
26  
27 lower levels of GRIN2C in ACx from people with BPDBD, which raises the possibility the lower  
28  
29 NMDAR in that cortical region, but not the DLPFC, is partly due to decreased gene expression. It has  
30  
31 been suggested that the GRIN2 family of sub-units are important in NMDAR modulation and  
32  
33 desensitization (McIlhinney et al., 2003). Thus our data is consistent with both a lower level of NMDAR  
34  
35 and possibly a change in the ability of these receptors to desensitize in the ACx from people with BPDBD.  
36  
37 As our study is the first to report on NMDAR mRNA in the ACx this is a particularly novel finding. We  
38  
39 did not find changes in the levels of PDS 95 in the ACx from people with BPDBD which agrees with a  
40  
41 previous report of this protein not being changed in the DLPFC from people with BPDBD (Beneyto and  
42  
43 Meador-Woodruff, 2008).

44  
45 In MDD, we found higher levels of GRIN2D mRNA in the frontal pole, where there was no  
46  
47 difference in levels of NMDAR. These data are consistent with the notion that a change in gene  
48  
49 expression will not necessarily be associated with changes for the encoded protein of that gene.

50  
51  
52  
53  
54 Finally, we report higher levels of GRIN2B mRNA in parietal cortex and lower levels of that

mRNA in the DLPFC from suicide completers. In addition, levels of PSD 95 were increased in ACx from suicide completers. These data open up a possible role for abnormal signaling through the NMDAR in the CNS of suicide completers. It is also intriguing that a previous study had reported lower levels of PSD 95 and GRIN2B mRNA in the hippocampus from suicide completers (Sowa-Kucma et al., 2013). These and our findings suggest a further investigation into levels of GRIN2B mRNA and PSD 95 in suicide completion would be worthwhile to better understand the extent of changes in these measures across the CNS. Notably, the study in the hippocampus also reported a significant increase in zinc mediated EC<sub>50</sub> for [<sup>3</sup>H]MK-801 binding, but not total [<sup>3</sup>H]MK-801 binding, in suicide completers (Sowa-Kucma et al., 2013). These latter data suggest a lower bioavailability of the NMDAR in the CNS of suicide completers, possibly due to conformational changes in the assembled receptor.

## 5.0 Conclusion

Our studies have certain limitations. Thus, although our cohort sizes are not unusually small for postmortem CNS studies they are still a low representation from each diagnosis and our findings need replicating in larger cohorts. Moreover, like many studies in psychiatry treatment remains a potential confound. We did not observe any strong relationships between types of drug or drug doses and any of our experimental variables however, at this point, it is not possible to exclude changes in glutamatergic markers in the cortex being part of the neuropsychopharmacological outcome of psychotropic drug treatments. Nonetheless, given the somewhat homogenous neurochemical nature of the human cortex it is somewhat difficult to explain how psychotropic drugs, acting on the same targets throughout the cortex, could produce the region-specific outcomes we observed in different psychiatric disorders. Whilst rates of suicide [completion](#)

1  
2  
3  
4  
5  
6 differed between diagnoses, our sample sizes were too small to determine if suicide completion  
7  
8 within specific diagnoses was associated with changes in glutamatergic markers in the cortex.  
9

10  
11  
12  
13 In interpreting the significance of our finding it is important to note that changed levels of  
14 [<sup>3</sup>H]MK801 binding in rodents have been linked to changes in functions such as learning and  
15 memory (Basham et al., 1996; Stecher et al., 1997) This suggests that the changes in levels of  
16 NMDAR in the DLPFC and ACx from people with schizophrenia and BPDBD could have  
17 behavioral / functional consequences. However, the complex changes in glutamatergic markers  
18 in schizophrenia, BPDBD and MDD will require further study to better understand the complex  
19 regional changes in the CNS that may be altering glutamatergic function in psychiatric disorders  
20 and in suicide. Moreover, given the regional variation in changes in NMDAR in people with  
21 different psychiatric disorders, continuing to unravel these complex changes in the glutamatergic  
22 system in the CNS should help to better understand the role of NMDAR in the pathophysiology  
23 of schizophrenia, BD and MDD as well as the dose-dependent outcomes from ketamine  
24 administration in humansexplain the varying outcomes relating to ketamine in humans.  
25  
26  
27  
28  
29  
30  
31  
32  
33  
34  
35  
36  
37  
38  
39  
40  
41

## 42 **6.0 Conflict of Interest Statement**

43  
44 None of the authors have any conflict of interest and the research described in this manuscript  
45 was completed in the absence of any commercial or financial relationships that could be  
46 construed as a potential conflict of interest. ES has previously received honorarium from Astra-  
47 Zeneca and travel support from GSK that were unrelated to this research.  
48  
49  
50  
51  
52  
53  
54  
55  
56  
57  
58  
59  
60

## 7.0 Author and Contributors

All authors made a substantial contribution to editing the iterations of this manuscript leading to submission for publication. AG, SB and AU completed all of the experimental work described in the manuscript. BD, ES, JMW and RM provided oversight to the experimental activities. BD completed all the statistical analyses described in the manuscript and took the lead role in writing the manuscript.

## 8.0 Acknowledgement

BD is an NHMRC Senior Research Fellow (APP1002240) and ES is an ARC Future Fellow (FT100100689) and was the Royce Abbey Postdoctoral Fellow (Australian Rotary). This work was supported in part by NHMRC project grant (APP628699), the Victorian Government's Operational Infrastructure Support and the Rebecca Cooper Medical Research Foundation. The Victorian Brain Bank Network is supported by the Florey Institute for Neuroscience and Mental Health, the Alfred Hospital, the Victorian Forensic Institute of Medicine, the University of Melbourne and funded by Australia's National Health & Medical Research Council, Helen Macpherson Smith Trust, Parkinson's Victoria and Perpetual Philanthropic Services.

## 9.0 References

- [Abdallah CG, Sanacora G, Duman RS et al. \(2015\) Ketamine and rapid-acting antidepressants: a window into a new neurobiology for mood disorder therapeutics. \*Annual Review of Medicine\* 66: 509-523.](#)
- ~~[aan het Rot M, Zarate CA, Jr., Charney DS et al. \(2012\) Ketamine for depression: where do we go from here? \*Biological Psychiatry\* 72: 537-547.](#)~~
- Akbarian S, Sucher NJ, Bradley D et al. (1996) Selective alterations in gene expression for NMDA receptor subunits in prefrontal cortex of schizophrenics. *J.Neurosci.* 16: 19-30.
- Basham ME, Nordeen EJ, Nordeen KW. (1996) Blockade of NMDA receptors in the anterior forebrain impairs sensory acquisition in the zebra finch (*Poephila guttata*). *Neurobiol.Learn.Mem.* 66: 295-304.
- Beneyto M, Kristiansen LV, Oni-Orisan A et al. (2007) Abnormal glutamate receptor expression in the medial temporal lobe in schizophrenia and mood disorders. *Neuropsychopharmacology* 32: 1888-1902.
- Beneyto M, Meador-Woodruff JH. (2008) Lamina-specific abnormalities of NMDA receptor-associated postsynaptic protein transcripts in the prefrontal cortex in schizophrenia and bipolar disorder. *Neuropsychopharmacology* 33: 2175-2186.
- Bitanhirwe BK, Lim MP, Woo TU. (2010) N-methyl-D-aspartate receptor expression in parvalbumin-containing inhibitory neurons in the prefrontal cortex in bipolar disorder. *Bipolar.Disord.* 12: 95-101.

1  
2  
3  
4  
5  
6 Cook RD, Weisberg S. (1999) Applied Regression Including Computing and Graphics.  
7  
8 Hoboken: Wiley.

9  
10  
11 D'Agostino RB, Belanger A, D'Agostino Jnr RB. (1990) A suggestion for using powerful and  
12  
13 informative tests of normality. *The American Statistician* 44: 316-321.  
14  
15

16  
17 Deakin JF, Slater P, Simpson MD et al. (1989) Frontal cortical and left temporal glutamatergic  
18  
19 dysfunction in schizophrenia. *J.Neurochem.* 52: 1781-1786.

Formatted: Font: (Default) Times New Roman

20  
21  
22 Dean B, Gray L, Scarr E. (2006) Regionally specific changes in levels of cortical S100beta in  
23  
24 bipolar 1 disorder but not schizophrenia. *Aust.N.Z.J.Psychiatry* 40: 217-224.  
25  
26

27  
28 Dean B, Hussain T, Hayes W et al. (1999a) Changes in serotonin2A and GABA(A) receptors  
29  
30 in schizophrenia: studies on the human dorsolateral prefrontal cortex. *J.Neurochem.*  
31  
32 72: 1593-1599.  
33  
34

35  
36 Dean B, Pavey, G, Chai, SY et al. (1999b) The localisation and quantification of molecular  
37  
38 changes in the human brain using *in situ* radioligand binding and autoradiography.  
39  
40 In: Dean B, Kleinman JE, Hyde TM. eds *Using CNS tissue in psychiatric research: A*  
41  
42 *practical guide*. Amsterdam: Harwood Academic Press, pp. 67-83.  
43  
44

45  
46 Dean B, Tawadros N, Scarr E et al. (2010) Regionally-specific changes in levels of tumour  
47  
48 necrosis factor in the dorsolateral prefrontal cortex obtained postmortem from  
49  
50 subjects with major depressive disorder. *Journal of Affective Disorders* 120: 245-248.  
51  
52  
53  
54



- 1  
2  
3  
4  
5  
6 Dracheva S, Marras SA, Elhakem SL et al. (2001) N-methyl-D-aspartic acid receptor  
7  
8 expression in the dorsolateral prefrontal cortex of elderly patients with  
9  
10 schizophrenia. *Am.J.Psychiatry* 158: 1400-1410.  
11  
12  
13 Eaton SL, Roche SL, Llaverro HM et al. (2013) Total protein analysis as a reliable loading  
14  
15 control for quantitative fluorescent Western blotting. *PLoS.ONE*. 8: e72457-  
16  
17  
18 Ferrer I, Santpere G, Arzberger T et al. (2007) Brain protein preservation largely depends on  
19  
20 the postmortem storage temperature: implications for study of proteins in human  
21  
22 neurologic diseases and management of brain banks: a BrainNet Europe Study.  
23  
24 *J.Neuropathol.Exp.Neurol*. 66: 35-46.  
25  
26  
27  
28 Foster P. (1989) Neuroleptic equivalence. *The Pharmaceutical Journal* 243: 431-432.  
29  
30  
31  
32 Funk AJ, Rumbaugh G, Harotunian V et al. (2009) Decreased expression of NMDA receptor-  
33  
34 associated proteins in frontal cortex of elderly patients with schizophrenia.  
35  
36 *Neuroreport* 20: 1019-1022.  
37  
38  
39 Gladding CM, Raymond LA. (2011) Mechanisms underlying NMDA receptor  
40  
41 synaptic/extrasynaptic distribution and function. *Mol.Cell Neurosci*. 48: 308-320.  
42  
43  
44  
45 Grimwood S, Slater P, Deakin JF et al. (1999) NR2B-containing NMDA receptors are up-  
46  
47 regulated in temporal cortex in schizophrenia. *Neuroreport* 10: 461-465.  
48  
49  
50 Hill C, Keks N, Roberts S et al. (1996) Problem of diagnosis in postmortem brain studies of  
51  
52 schizophrenia. *Am.J.Psychiatry* 153: 533-537.  
53  
54  
55  
56  
57  
58  
59  
60

- 1  
2  
3  
4  
5  
6 Holemans S, De PF, Horton RW et al. (1993) NMDA glutamatergic receptors, labelled with  
7 [3H]MK-801, in brain samples from drug-free depressed suicides. *Brain Res.* 616:  
8 138-143.  
9  
10  
11  
12  
13 Ishimaru M, Kurumaji A, Toru M. (1994) Increases in strychnine-insensitive glycine binding  
14 sites in cerebral cortex of chronic schizophrenics: evidence for glutamate hypothesis.  
15 *Biological Psychiatry* 35: 84-95.  
16  
17  
18  
19  
20  
21 Kingsbury AE, Foster OJ, Nisbet AP et al. (1995) Tissue pH as an indicator of mRNA  
22 preservation in human post-mortem brain. *Brain Res.Mol.Brain Res.* 28: 311-318.  
23  
24  
25  
26 Kornhuber J, Mack-Burkhardt F, Riederer P et al. (1989) [3H]MK-801 binding sites in  
27 postmortem brain regions of schizophrenic patients. *J.Neural Transm.* 77: 231-236.  
28  
29  
30  
31  
32 Kristiansen LV, Beneyto M, Haroutunian V et al. (2006) Changes in NMDA receptor subunits  
33 and interacting PSD proteins in dorsolateral prefrontal and anterior cingulate cortex  
34 indicate abnormal regional expression in schizophrenia. *Mol.Psychiatry* 11: 737-47,  
35 705.  
36  
37  
38  
39  
40  
41 Kristiansen LV, Patel SA, Haroutunian V et al. (2010) Expression of the NR2B-NMDA  
42 receptor subunit and its Tbr-1/CINAP regulatory proteins in postmortem brain  
43 suggest altered receptor processing in schizophrenia. *Synapse* 64: 495-502.  
44  
45  
46  
47  
48  
49 ~~Malhotra AK, Pinals DA, Adler CM et al. (1997) Ketamine-induced exacerbation of psychotic~~  
50 ~~symptoms and cognitive impairment in neuroleptic-free schizophrenics.~~  
51 ~~*Neuropsychopharmacology* 17: 141-150.~~  
52  
53  
54  
55  
56  
57  
58  
59  
60

- 1  
2  
3  
4  
5  
6 McIlhinney RA, Philipps E, Le BB et al. (2003) Assembly of N-methyl-D-aspartate (NMDA)  
7  
8 receptors. *Biochem.Soc.Trans.* 31: 865-868.  
9  
10  
11 McKillup S. (2006) Statistics explained: An introductory guide for life sciences. Cambridge:  
12  
13 Cambridge University Press.  
14  
15  
16  
17 Miller GA, Chapman JP. (2001) Misunderstanding analysis of covariance. *J.Abnorm.Psychol.*  
18  
19 110: 40-48.  
20  
21  
22 Mueller HT, Meador-Woodruff JH. (2004) NR3A NMDA receptor subunit mRNA expression  
23  
24 in schizophrenia, depression and bipolar disorder. *Schizophr.Res.* 71: 361-370.  
25  
26  
27  
28 Newell KA, Zavitsanou K, Huang XF. (2005) Ionotropic glutamate receptor binding in the  
29  
30 posterior cingulate cortex in schizophrenia patients. *Neuroreport* 16: 1363-1367.  
31  
32  
33  
34 Nudmamud S, Reynolds GP. (2001) Increased density of glutamate/N-methyl-D-aspartate  
35  
36 receptors in superior temporal cortex in schizophrenia. *Neurosci.Lett.* 304: 9-12.  
37  
38  
39 Nudmamud S, Reynolds LM, Reynolds GP. (2003) N-acetylaspartate and N-  
40  
41 Acetylaspartylglutamate deficits in superior temporal cortex in schizophrenia and  
42  
43 bipolar disorder: a postmortem study. *Biological Psychiatry* 53: 1138-1141.  
44  
45  
46 Nudmamud-Thanoi S, Reynolds GP. (2004) The NR1 subunit of the glutamate/NMDA  
47  
48 receptor in the superior temporal cortex in schizophrenia and affective disorders.  
49  
50 *Neurosci.Lett.* 372: 173-177.  
51  
52  
53  
54  
55  
56  
57  
58  
59  
60

1  
2  
3  
4  
5  
6 Paoletti P, Neyton J. (2007) NMDA receptor subunits: function and pharmacology.

7  
8 *Curr.Opin.Pharmacol.* 7: 39-47.

9  
10  
11 ~~Pavey GM, Copolov DL, Dean B. (2002) High resolution phosphor imaging: validation for use~~  
12 ~~with human brain tissue sections to determine the affinity and density of radioligand~~  
13 ~~binding. *J.Neurosci.Methods* 116: 157-163.~~

14  
15  
16  
17  
18  
19 Reynolds IJ. (2001) [3H](+)MK801 radioligand binding assay at the N-methyl-D-aspartate  
20  
21 receptor. *Curr.Protoc.Pharmacol.* Chapter 1: Unit-

22  
23  
24  
25 Roberts SB, Hill CA, Dean B et al. (1998) Confirmation of the diagnosis of schizophrenia after  
26  
27 death using DSM-IV: a Victorian experience. *Aust.N.Z.J.Psychiatry* 32: 73-76.

28  
29  
30 Ruffolo RR, Jr. (1982) Review important concepts of receptor theory. *J.Auton.Pharmacol.* 2:  
31 277-295.

32  
33  
34  
35  
36  
37  
38  
39 Scarr E, Beneyto M, Meador-Woodruff JH et al. (2005) Cortical glutamatergic markers in  
40  
41 schizophrenia. *Neuropsychopharmacology* 30: 1521-1531.

42  
43  
44  
45 Scarr E, Gray L, Keriakous D et al. (2006) Increased levels of SNAP-25 and synaptophysin in  
46  
47 the dorsolateral prefrontal cortex in bipolar I disorder. *Bipolar.Disord.* 8: 133-143.

48  
49  
50 Scarr E, Pavey G, Sundram S et al. (2003) Decreased hippocampal NMDA, but not kainate or  
51  
52 AMPA receptors in bipolar disorder. *Bipolar.Disord.* 5: 257-264.

- 1  
2  
3  
4  
5  
6 Scherzer CR, Landwehrmeyer GB, Kerner JA et al. (1998) Expression of N-methyl-D-  
7  
8 aspartate receptor subunit mRNAs in the human brain: hippocampus and cortex.  
9  
10 *J.Comp Neurol.* 390: 75-90.  
11  
12  
13 Sowa-Kucma M, Szewczyk B, Sadlik K et al. (2013) Zinc, magnesium and NMDA receptor  
14  
15 alterations in the hippocampus of suicide victims. *Journal of Affective Disorders* 151:  
16  
17 924-931.  
18  
19  
20 Stan AD, Ghose S, Gao XM et al. (2006) Human postmortem tissue: what quality markers  
21  
22 matter? *Brain Res.* 1123: 1-11.  
23  
24  
25  
26 Stecher J, Muller WE, Hoyer S. (1997) Learning abilities depend on NMDA-receptor density  
27  
28 in hippocampus in adult rats. *J.Neural Transm.* 104: 281-289.  
29  
30  
31  
32 Tucholski J, Simmons MS, Pinner AL et al. (2013) N-linked glycosylation of cortical N-  
33  
34 methyl-D-aspartate and kainate receptor subunits in schizophrenia. *Neuroreport* 24:  
35  
36 688-691.  
37  
38  
39 Wong EH, Kemp JA, Priestley T et al. (1986) The anticonvulsant MK-801 is a potent N-  
40  
41 methyl-D-aspartate antagonist. *Proc.Natl.Acad.Sci.U.S.A* 83: 7104-7108.  
42  
43  
44  
45 Woo TU, Shrestha K, Lamb D et al. (2008) N-methyl-D-aspartate receptor and calbindin-  
46  
47 containing neurons in the anterior cingulate cortex in schizophrenia and bipolar  
48  
49 disorder. *Biological Psychiatry* 64: 803-809.  
50  
51  
52  
53  
54  
55  
56  
57  
58  
59  
60

1  
2  
3  
4  
5  
6  
7  
8  
9  
10  
11  
12  
13  
14  
15  
16  
17  
18  
19  
20  
21  
22  
23  
24  
25  
26  
27  
28  
29  
30  
31  
32  
33  
34  
35  
36  
37  
38  
39  
40  
41  
42  
43  
44  
45  
46  
47  
48  
49  
50  
51  
52  
53  
54  
55  
56  
57  
58  
59  
60

Zavitsanou K, Ward PB, Huang XF. (2002) Selective alterations in ionotropic glutamate receptors in the anterior cingulate cortex in schizophrenia. *Neuropsychopharmacology* 27: 826-833.

For Review Only

## 10.0 Figure legends

**Figure 1:** A typical autoradiograph showing the binding of [<sup>3</sup>H]MK-801 to the NMDAR in human cortex in the absence (**A**: Total binding (TB)) or presence (**B**: non-specific binding (NSB)) of 100µM MK-801 and **C**: the levels of specific binding of [<sup>3</sup>H]MK-801 (mean ± SEM) in the inner radioligand binding layer of the anterior cingulate (ACx) and the outer radioligand binding layer of the dorsolateral prefrontal cortex (DLPFC) from the controls and people with schizophrenia (Sz) and bipolar disorder (**BPDBD**). Specific binding was calculated as TB – NSB. \*\*p = 0.01; \*\*\*p < 0.01.

**Figure 2:** Levels of [<sup>35</sup>S]riboprobe hybridisation (mean ± SEM) to the GRIN2D sub-unit in the frontal pole from people with major depressive disorders (MDD) and GRIN2D sub-unit in the ACx from people with bipolar disorder (**BPDBD**) compared to that in the same regions from age / sex matched controls. \*p < 0.05.

**Figure 3:** Levels of [<sup>35</sup>S]riboprobe hybridisation (mean ± SEM) to the GRIN2B sub-unit in the frontal pole and dorsolateral prefrontal cortex (DLPFC) from suicide completers and people who had died from other causes. \*\*p < 0.01, \*\*\*p = 0.02.

**Figure 4A:** A typical Western blot showing PSD 95 immunogenic bands in 2 cases and the internal control (I.C.). The I.C. is run on every gel to control for gel to gel variation and **B**: Levels of PSD 95 (mean ± SEM) in the ACx from suicide completers and people who had died from other causes.

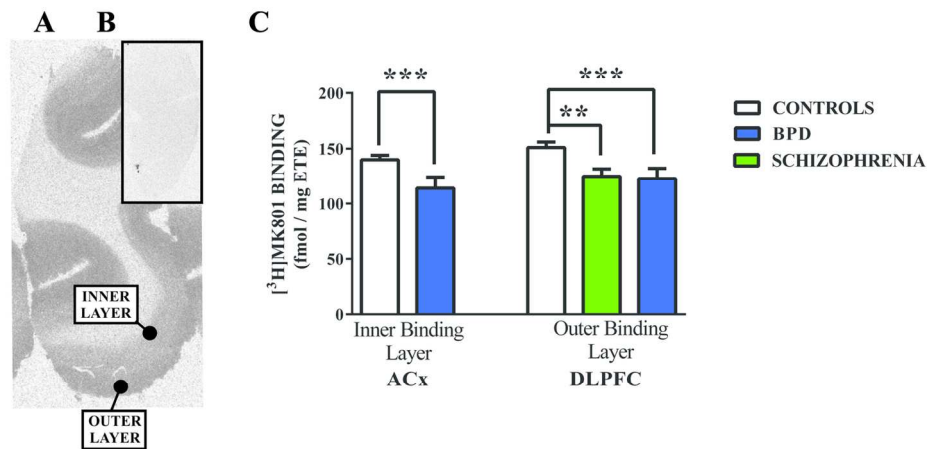


Figure 1: A typical autoradiograph showing the binding of [3H]MK-801 to the NMDAR in human cortex in the absence (A: Total binding (TB)) or presence (B: non-specific binding (NSB)) of 100 $\mu$ M MK-801 and C: the levels of specific binding of [3H]MK-801 (mean  $\pm$  SEM) in the inner radioligand binding layer of the anterior cingulate (ACx) from bipolar disorders (BD) and controls and the outer radioligand binding layer of the dorsolateral prefrontal cortex (DLPFC) from the controls and people with schizophrenia (Sz), BD and controls. Specific binding was calculated as TB - NSB. \*\* $p$  = 0.01; \*\*\* $p$  < 0.01.  
144x73mm (300 x 300 DPI)



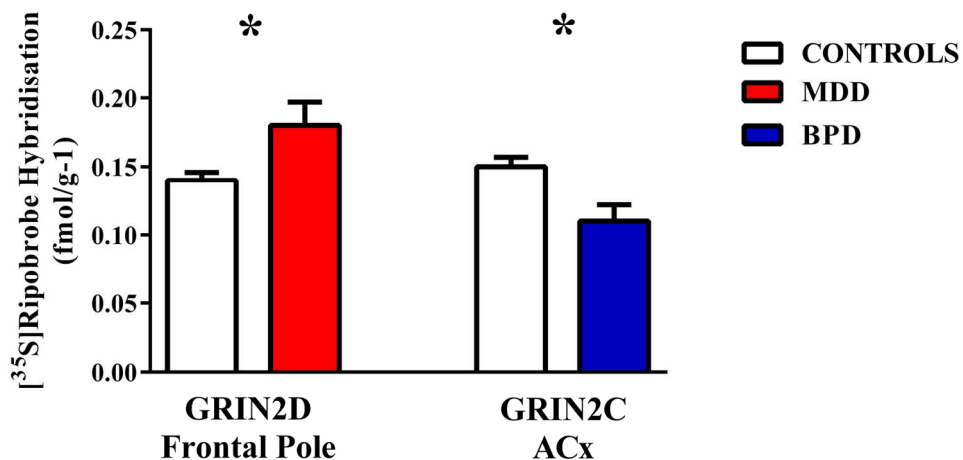


Figure 2: Levels of [<sup>35</sup>S]riboprobe hybridization (mean ± SEM) to the GRIN2D sub-unit in the frontal pole from people with major depressive disorders (MDD) and GRIN2D sub-unit in the ACx from people with bipolar disorder (BD) compared to that in the same regions from age / sex matched controls. \*p < 0.05. 76x39mm (600 x 600 DPI)

View Only

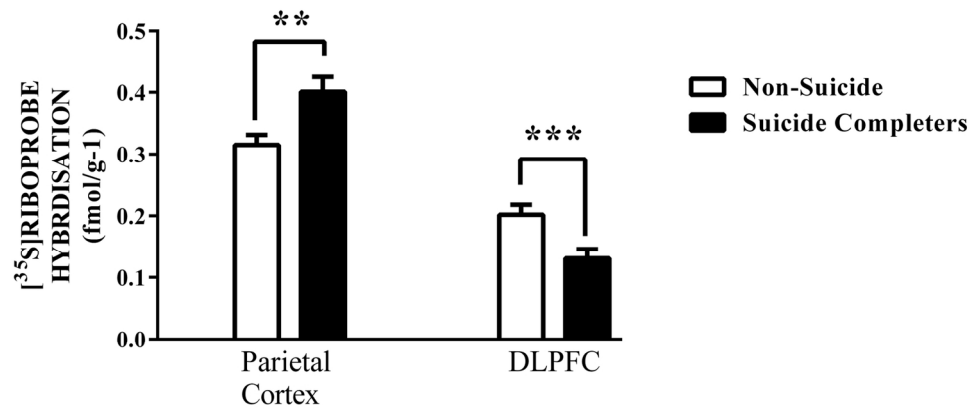


Figure 3: Levels of  $[^{35}\text{S}]$ riboprobe hybridization (mean  $\pm$  SEM) to the GRIN2B sub-unit in the frontal pole and dorsolateral prefrontal cortex (DLPFC) from suicide completers and people who had died from other causes. \*\* $p < 0.01$ , \*\*\* $p = 0.02$ .  
74x34mm (600 x 600 DPI)

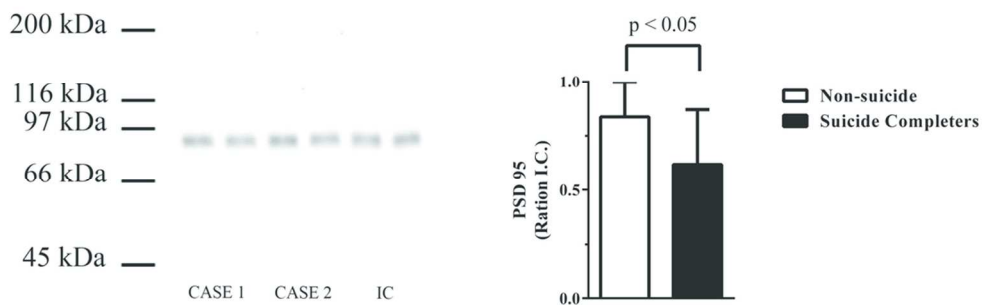


Figure 4A: A typical Western blot showing PSD95 immunogenic bands in 2 cases and the internal control (I.C.). The I.C. is run on every gel to control for gel to gel variation and B: Levels of PSD95 (mean  $\pm$  SEM) in the ACx from suicide completers and people who had died from other causes.  
98x37mm (300 x 300 DPI)

Review Only

Table 1: Summary of demographic and tissue collection data for cases in this study.

	Gender (M / F)	Sui	Age (yrs)		DI (yrs)		PMI (hrs)		pH	
			mean	SEM	mean	SEM	mean	SEM	mean	SEM
Controls	11 / 9	0	50	4.1			42	3.9	6.29	0.05
Schizophrenia	11 / 9	5	51	4.1	21	2.6	40	2.6	6.30	0.05
Bipolar Disorders	5 / 4	1	60	3.3	20	4.6	38	4.7	6.33	0.06
Major Depressive Disorders	5 / 5	8	52	5.2	17	3.3	49	5.1	6.4	0.01

Abbreviations: Sui = suicide completion; PMI = postmortem interval; DI = duration of illness

For Review Only



Minerva Access is the Institutional Repository of The University of Melbourne

**Author/s:**

Dean, B; Gibbons, AS; Boer, S; Uezato, A; Meador-Woodruff, J; Scarr, E; McCullumsmith, RE

**Title:**

Changes in cortical N-methyl-D-aspartate receptors and post-synaptic density protein 95 in schizophrenia, mood disorders and suicide

**Date:**

2016-03-01

**Citation:**

Dean, B., Gibbons, A. S., Boer, S., Uezato, A., Meador-Woodruff, J., Scarr, E. & McCullumsmith, R. E. (2016). Changes in cortical N-methyl-D-aspartate receptors and post-synaptic density protein 95 in schizophrenia, mood disorders and suicide. AUSTRALIAN AND NEW ZEALAND JOURNAL OF PSYCHIATRY, 50 (3), pp.275-283.  
<https://doi.org/10.1177/0004867415586601>.

**Persistent Link:**

<http://hdl.handle.net/11343/230792>

**File Description:**

Submitted version