



Lampasona, V., Pittman, D., Williams, A. J. K., Achenbach, P., Schlosser, M., Akolkar, B., & Winter, W. E. (2019). Islet Autoantibody Standardization Program 2018 Workshop: Interlaboratory Comparison of Glutamic Acid Decarboxylase Autoantibody Assay Performance. *Clinical Chemistry*, 65(9), 1141-1152.
<https://doi.org/10.1373/clinchem.2019.304196>

Peer reviewed version

Link to published version (if available):
[10.1373/clinchem.2019.304196](https://doi.org/10.1373/clinchem.2019.304196)

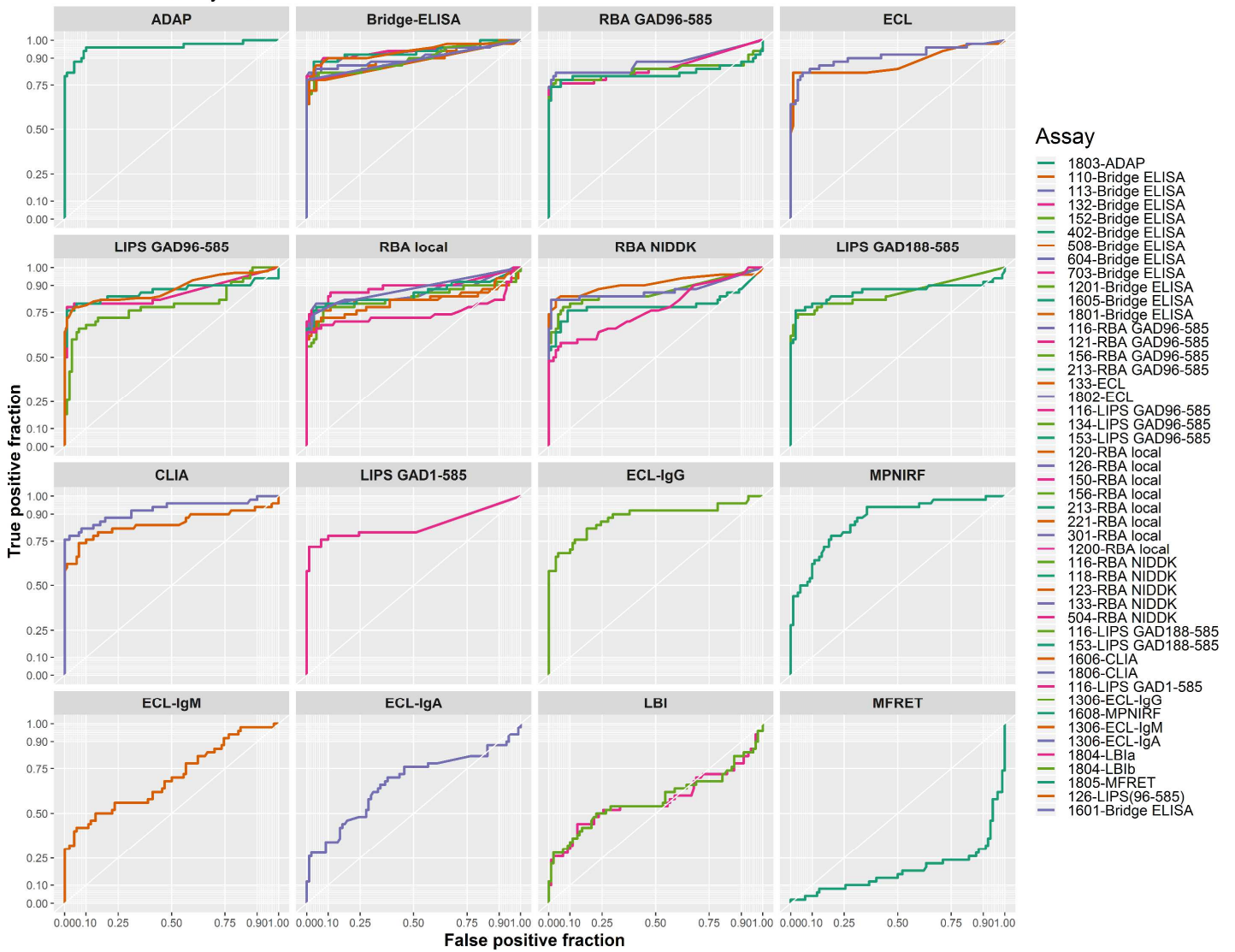
[Link to publication record in Explore Bristol Research](#)
PDF-document

University of Bristol - Explore Bristol Research

General rights

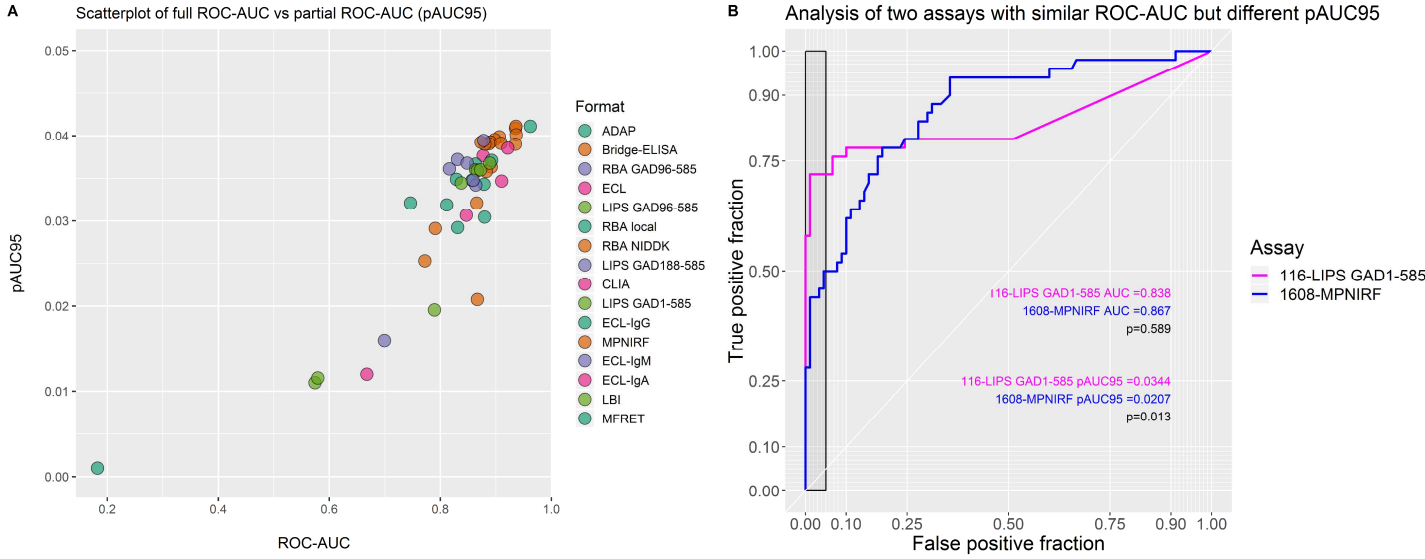
This document is made available in accordance with publisher policies. Please cite only the published version using the reference above. Full terms of use are available:
<http://www.bristol.ac.uk/red/research-policy/pure/user-guides/ebr-terms/>

Supplemental Figure 1 - Performance of GADA assays in IASP 2018
ROC curve analysis.



Assays are grouped by format and its variants and the groups sorted according to their median pAUC95

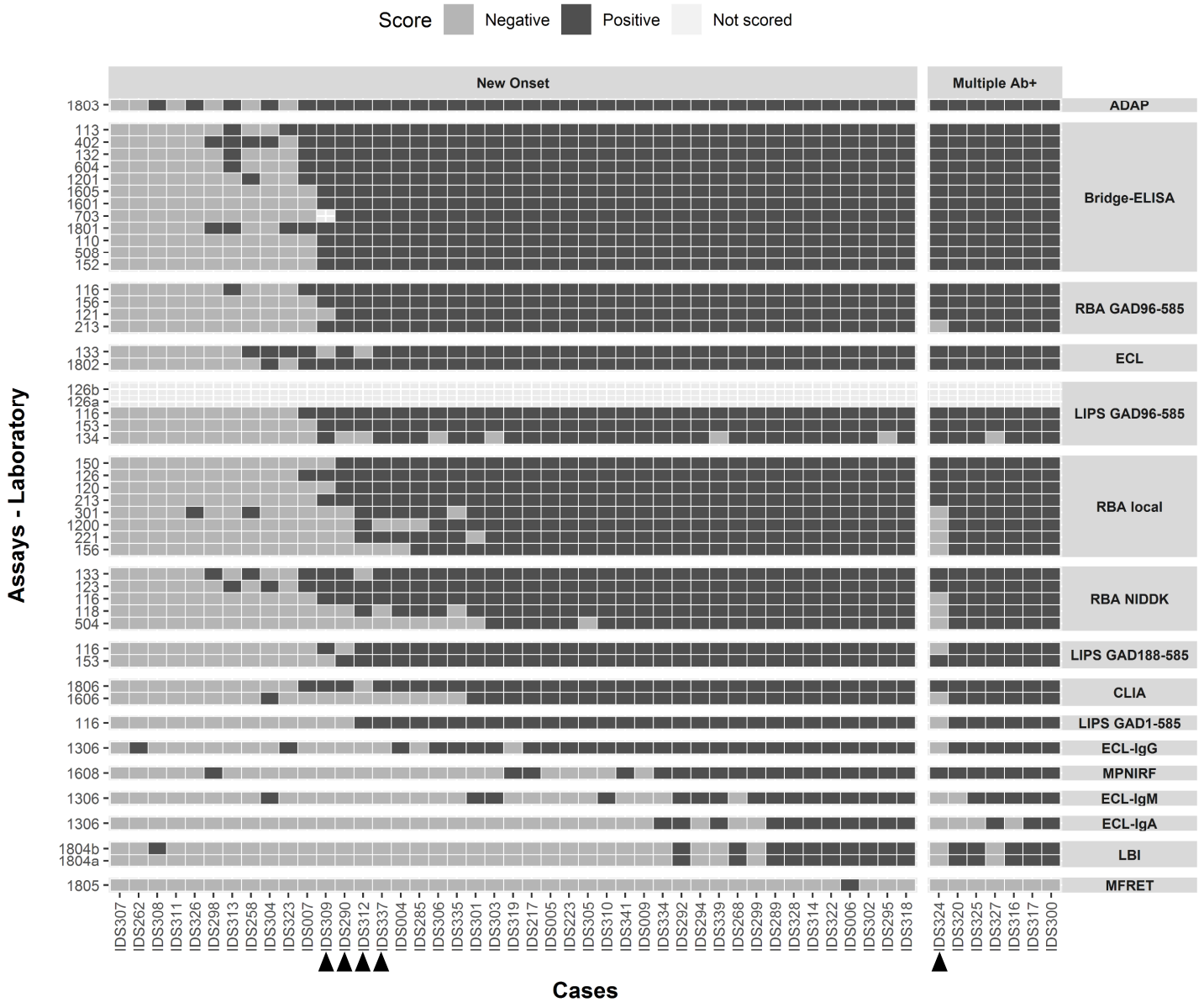
Supplemental Figure 2



Panel A: Correlation of total ROC-AUC vs partial AUC after imposing a specificity $\geq 95\%$ (pAUC95) showing large and frequent discrepancies in pAUC95 across assays with otherwise similar ROC-AUC indicating major differences in assay performance when high specificity was levied. Panel B: An example of two GADA assays with similar total ROC-AUC but with different pAUC95.

Supplemental Figure 3

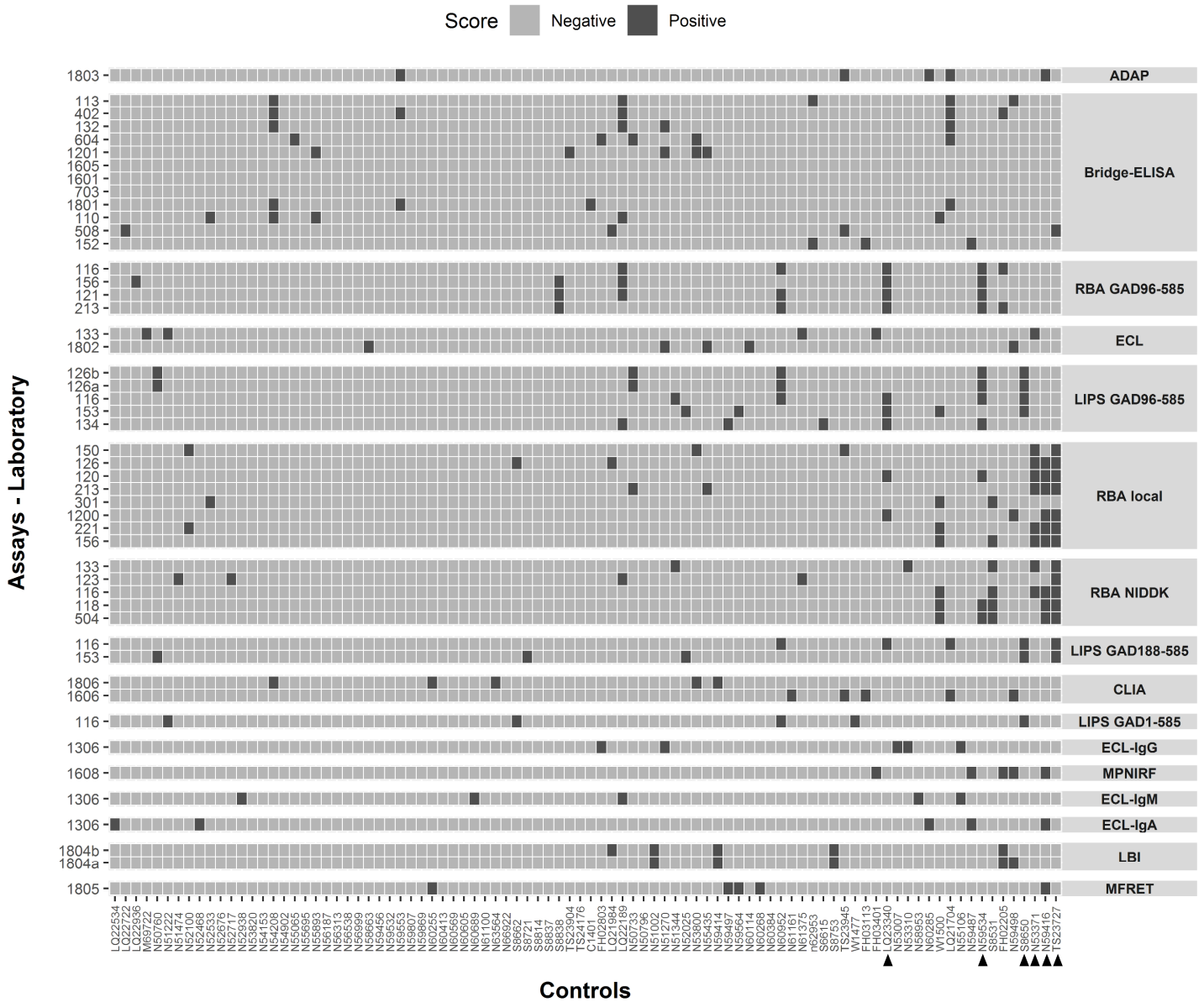
Tilemap of GADA Positive or Negative scores in T1D samples after imposing 95% specificity



Tilemap of GADA positive (dark grey tiles) or negative (light grey tiles) scores assigned to cases after imposing a 95% specificity on IASP2018 controls. Assays are grouped according to format and its variants. Cases are sorted left to right according to descending median rank of GADA titers. Cases with distinctive patterns discussed in the text are indicated by a black triangle.

Supplemental Figure 4

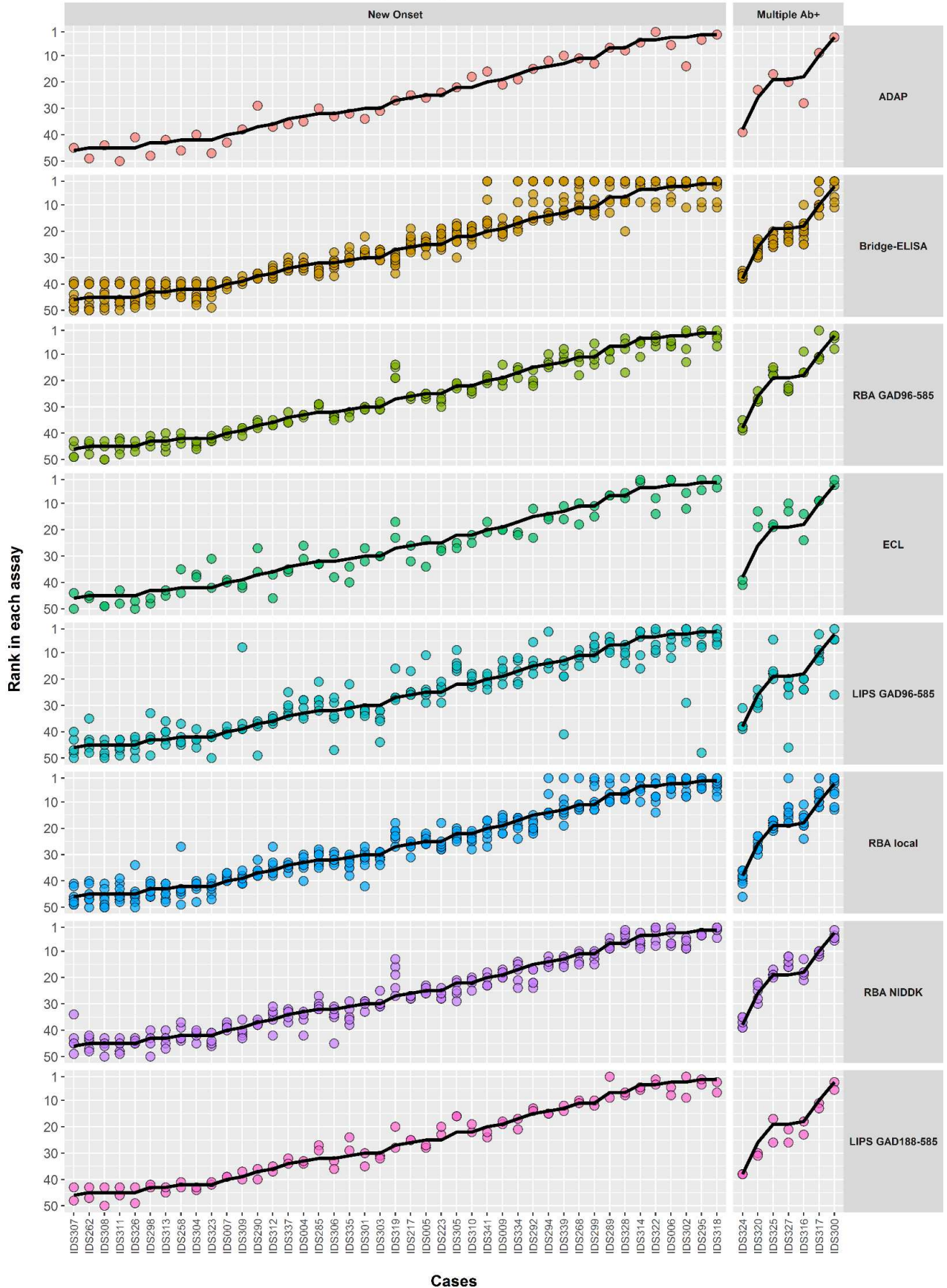
Tilemap of GADA Positive or Negative scores in Control samples after imposing 95% specificity



Tilemap of GADA positive (dark grey tiles) or negative (light grey tiles) scores assigned to control samples after imposing a 95% specificity on IASP2018 controls. Assays are grouped according to format and its variants. Control samples are sorted right to left according to descending frequency of positive score. Controls with distinctive patterns discussed in the text are indicated by a black triangle.

Supplemental Figure 5

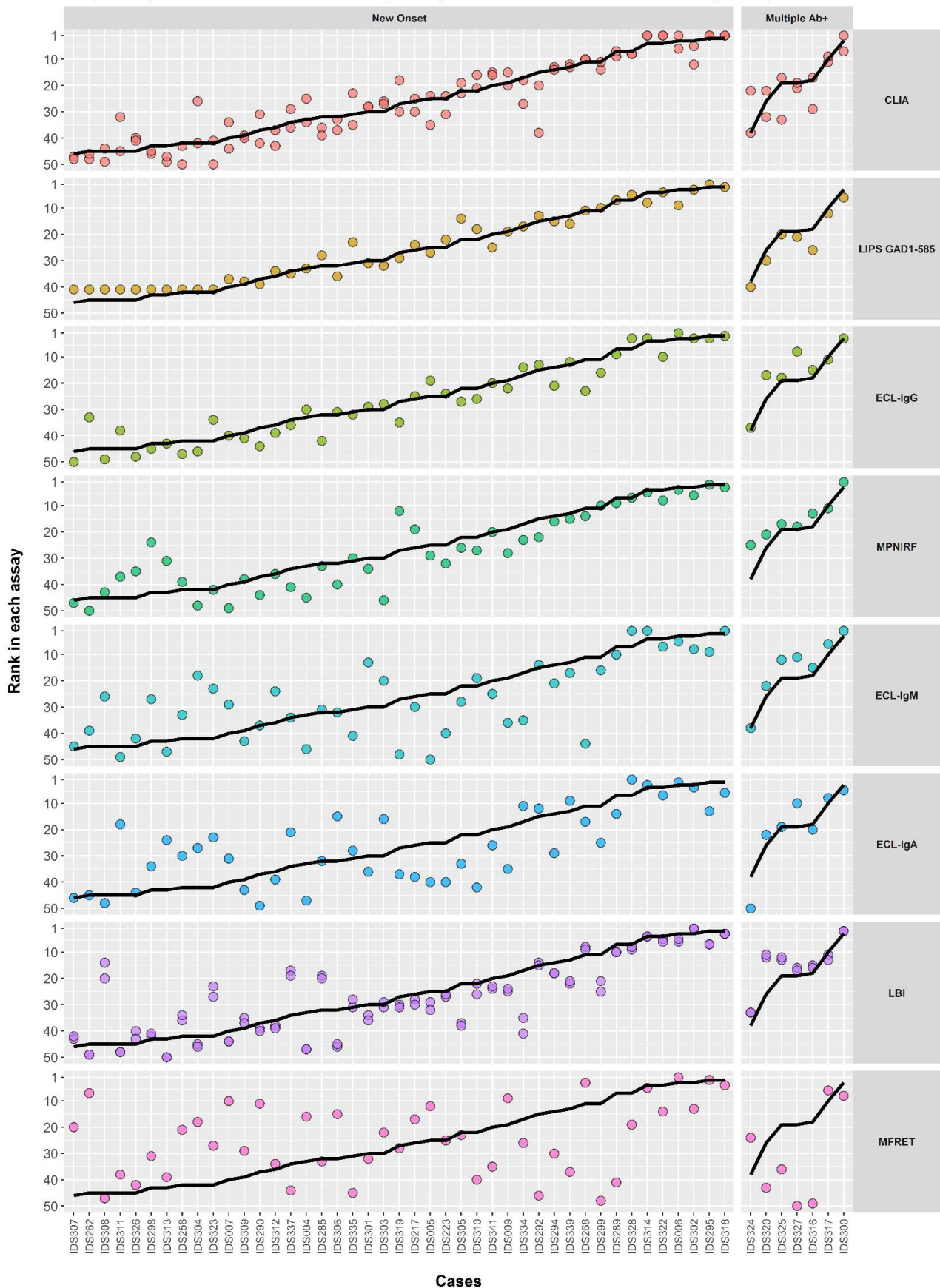
Stripchart plots of GADA titer rank assigned by laboratories to cases stratified by assay format.



Filled circles stand for individual assays assigned rank. The black line stands for the median GADA titer rank. Cases are sorted left to right according to descending median rank of GADA titers. Results are shown only for laboratories that assigned a score.

Supplemental Figure 5

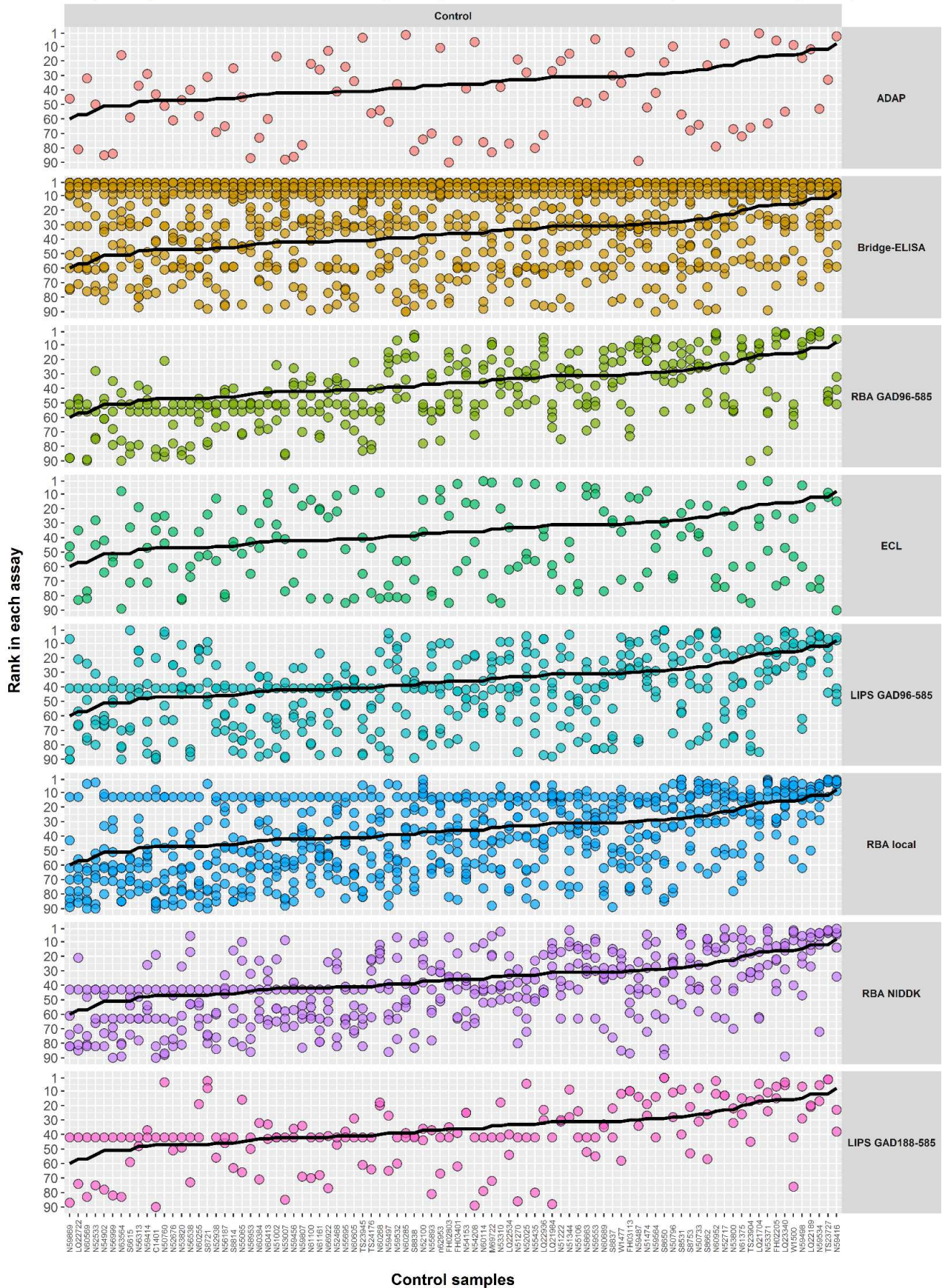
Stripchart plots of GADA titer rank assigned by laboratories to cases stratified by assay format.



Filled circles stand for individual assays assigned rank. The black line stands for the median GADA titer rank. Cases are sorted left to right according to descending median rank of GADA titers. Results are shown only for laboratories that assigned a score.

Supplemental Figure 6

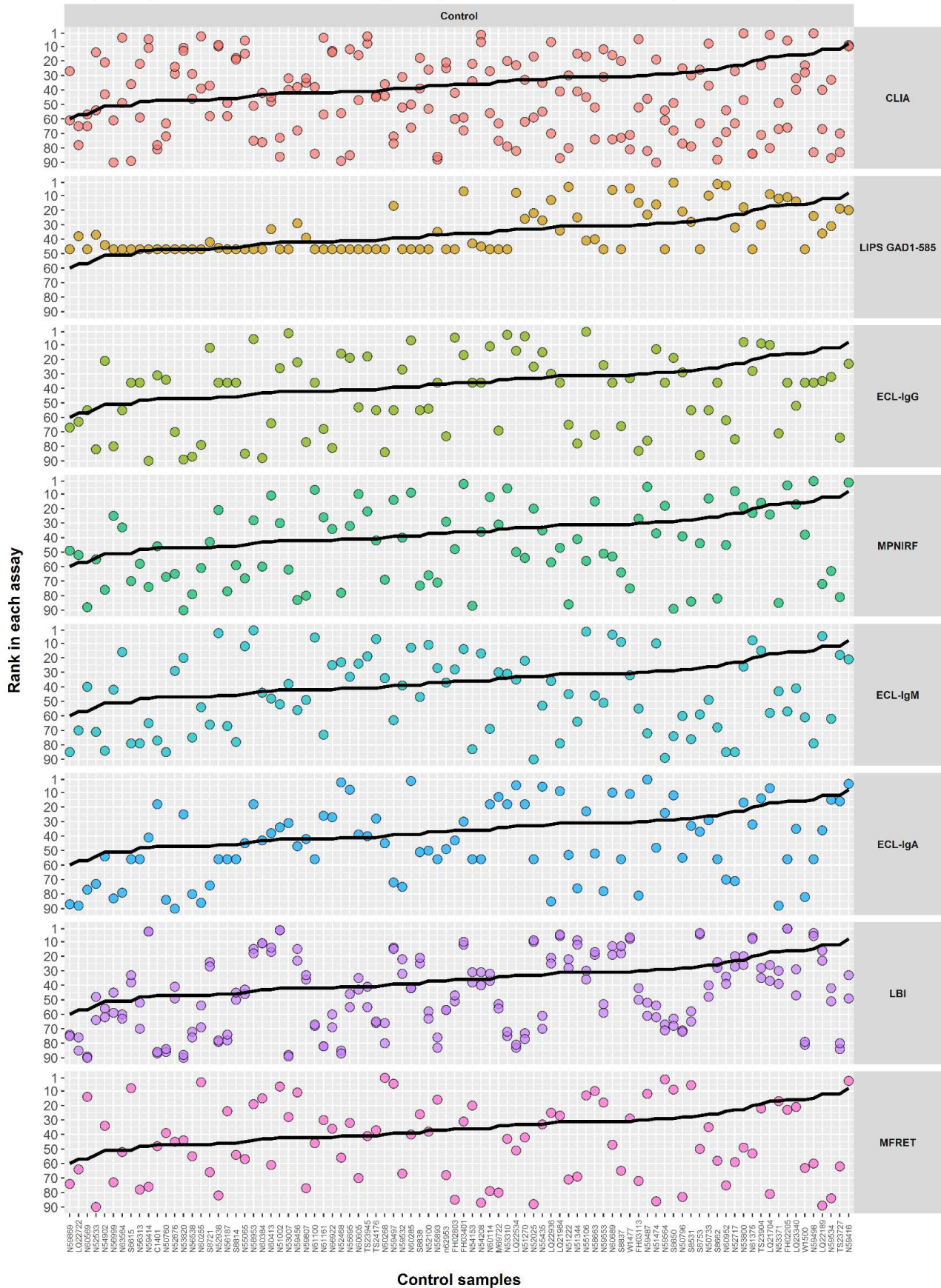
Stripchart plots of GADA titer rank assigned by laboratories to control samples stratified by assay format.



Filled circles stand for individual assays assigned rank. The black line stands for the median GADA titer rank. Control samples are sorted left to right according to descending median rank of GADA titers. Results are shown only for laboratories that assigned a score.

Supplemental Figure 6

Stripchart plots of GADA titer rank assigned by laboratories to control samples stratified by assay format.



Filled circles stand for individual assays assigned rank. The black line stands for the median GADA titer rank. Control samples are sorted left to right according to descending median rank of GADA titers. Results are shown only for laboratories that assigned a score.