

Lack of association between modifiable exposures and glioma risk: A Mendelian randomisation analysis

Charlie N. Saunders¹, Alex J. Cornish¹, Ben Kinnersley¹, Philip J. Law¹, Elizabeth B. Claus^{4,5}, Dora Il'yasova^{6,7,8}, Joellen Schildkraut^{7,8}, Jill S. Barnholtz-Sloan², Sara H. Olson⁹, Jonine L. Bernstein⁹, Rose K. Lai¹⁰, Stephen Chanock¹¹, Preetha Rajaraman¹¹, Christoffer Johansen^{12,13}, Robert B. Jenkins¹⁴, Beatrice S. Melin¹⁵, Margaret R. Wrensch^{16,17}, Marc Sanson^{18,19}, Melissa L. Bondy³, Richard S. Houlston^{1,20}

¹Division of Genetics and Epidemiology, The Institute of Cancer Research, London SW7 3RP, UK; ²Department of Population and Quantitative Health Sciences and the Cleveland Center for Health Outcomes Research, Case Western Reserve University School of Medicine, Cleveland, OH 44106, USA; ³Section of Epidemiology and Population Sciences, Department of Medicine, Dan L. Duncan Comprehensive Cancer Center, Baylor College of Medicine, Houston, TX 77030, USA; ⁴School of Public Health, Yale University, New Haven, CT 06510, USA; ⁵Department of Neurosurgery, Brigham and Women's Hospital, Boston, MA 02115, USA; ⁶Department of Epidemiology and Biostatistics, School of Public Health, Georgia State University, Atlanta, GA 30303, USA; ⁷Duke Cancer Institute, Duke University Medical Center, Durham, NC 27710, USA; ⁸Cancer Control and Prevention Program, Department of Community and Family Medicine, Duke University Medical Center, Durham, NC 27710, USA; ⁹Department of Epidemiology and Biostatistics, Memorial Sloan Kettering Cancer Center, New York, NY 10017, USA; ¹⁰Departments of Neurology and Preventive Medicine, Keck School of Medicine, University of Southern California, Los Angeles, CA 90033, USA; ¹¹Division of Cancer Epidemiology and Genetics, National Cancer Institute, Bethesda, MD 20892, USA; ¹²Danish Cancer Society Research Center, Survivorship, Danish Cancer Society, Copenhagen 2100, Denmark; ¹³Oncology Clinic, Finsen Centre, Rigshospitalet, University of Copenhagen, Copenhagen 2100, Denmark; ¹⁴Department of Laboratory Medicine and Pathology, Mayo Clinic Comprehensive Cancer Center, Mayo Clinic, Rochester, MI 55905, USA; ¹⁵Department of Radiation Sciences, Umeå University, Umeå 901 87, Sweden; ¹⁶Department of Neurological Surgery, School of Medicine, University of California, San Francisco, CA 94143, USA; ¹⁷Institute of Human Genetics, University of California, San Francisco, CA 94143, USA; ¹⁸Sorbonne Université, Inserm, CNRS, UMR S 1127, Institut du Cerveau et de la Moelle épinière, ICM, F-75013, Paris; ¹⁹AP-HP, Groupe Hospitalier Pitié-Salpêtrière, Service de Neurologie 2-Mazarin, Paris 75013, France and ²⁰Division of Molecular Pathology, The Institute of Cancer Research, London SW7 3RP, UK.

Correspondence to: Charlie N. Saunders, Division of Genetics and Epidemiology, The Institute of Cancer Research, London, UK. Email: Charlie.Saunders@icr.ac.uk Word Count: 5054.

© The Author(s) 2019. Published by Oxford University Press on behalf of the Society for Neuro-Oncology. This is an Open Access article distributed under the terms of the Creative Commons Attribution License (<http://creativecommons.org/licenses/by/4.0/>), which permits unrestricted reuse, distribution, and reproduction in any medium, provided the original work is properly cited.

ABSTRACT

Background: The etiological basis of glioma is poorly understood. We have used genetic markers in a Mendelian Randomisation (MR) framework to examine if lifestyle, cardiometabolic and inflammatory factors influence the risk of glioma. This methodology reduces bias from confounding and is not affected by reverse causation.

Methods: We identified genetic instruments for 37 potentially modifiable risk factors and evaluated their association with glioma risk using data from a genome-wide association study of 12,488 glioma patients and 18,169 controls. We used the estimated odds ratio of glioma associated with each of the genetically defined traits to infer evidence for a causal relationship with the following exposures: lifestyle and dietary factors (height, plasma IGF-1, blood carnitine, blood methionine, blood selenium, blood zinc, circulating adiponectin, circulating carotenoids, iron status, serum calcium, vitamin [A1, B12, B6, E and 25-hydroxyvitamin D], fatty acids levels [mono-unsaturated, omega-3 and omega-6] and circulating fetuin-A); cardiometabolic factors (birth weight, HDL cholesterol, LDL cholesterol, total cholesterol, total triglycerides, basal metabolic rate, body fat percentage, body mass index, fasting glucose, fasting proinsulin, HbA1C levels, diastolic and systolic blood pressure, waist circumference, waist-to-hip ratio) were included; inflammatory factors (C-reactive protein (CRP), plasma IL-6 sRa and serum IgE).

Results: After correction for the testing of multiple potential risk factors and excluding associations driven by one single nucleotide polymorphism (SNP) no significant association with glioma risk was observed (*i.e.* $P_{Corrected} > 0.05$).

Conclusions: This study did not provide evidence supporting any of the 37 factors examined as having a significant influence on glioma risk.

IMPORTANCE OF THE STUDY

In this study we attempt to elucidate modifiable risk factors of glioma, the etiological basis of which is poorly understood. We used genetic markers in a Mendelian Randomisation (MR) framework to examine whether the risk of glioma is influenced by one of 37 lifestyle, cardiometabolic and inflammatory factors.

The MR methodology reduces bias from confounding and is not affected by reverse causation, an improvement over the traditional observational studies that have previously been conducted. Additionally, in this study we leverage the largest glioma GWAS dataset published to-date, giving our analysis more power compared to other studies of its type. This improved, unbiased and well powered assessment of potential glioma risk factors provides invaluable information to the field.

Accepted Manuscript

INTRODUCTION

Gliomas account for around 80% of malignant primary brain tumours in adults.¹ Gliomas are heterogeneous and different tumour subtypes can be broadly classified into glioblastoma (GBM) and lower-grade glioma (non-GBM). Gliomas are typically associated with a poor prognosis, irrespective of clinical care, with the most common glioma subtype (GBM) being associated with a median overall survival of only 12 months.²

While glioma subtypes have distinct molecular profiles presumably resulting from different etiological pathways, no environmental exposures have consistently been linked to risk; except for ionizing radiation, which only accounts for a very small number of cases.^{2,3} However, the near threefold higher incidence in Northern Europe (6.59 cases per 100,000) than in prosperous Southeast Asia (2.55 cases per 100,000) raises the possibility that lifestyle factors influence glioma risk.^{2,4} Over the last 30 years, observational epidemiological studies have sought to establish associations between a variety of lifestyle factors and risk of developing glioma. Most studies have focused on factors previously shown to influence risk of other cancers, such as diet. Results from these observational epidemiological studies have so far either been inconsistent, null or not independently validated; for example the conflicting evidence for possible associations with dietary factors and obesity.⁵⁻¹¹ In contrast to other cancer types, published studies have shown an inverse relationship with both diabetes and hyperglycaemia for glioma.¹² Studies of a possible relationship between metabolic syndrome traits (triglyceride and cholesterol levels, body fat and blood pressure) have produced similarly mixed results.^{8,13,14}

Associations seen in conventional observational studies may not be causal, instead arising as a consequence of methodological biases inherent in the study design. Biases include selection bias in controls, recall bias, reverse causation or confounding from unmeasured effects.¹⁵ Furthermore, the high frequency of exposure ascertainment by proxy in studies of glioma represents an additional source of bias.¹⁶

Mendelian randomization (MR) is an analytical approach, whereby germline genetic variants are used as proxies, or instrumental variables (IVs), for putative risk factors.¹⁷ Since genetic variants are randomly assigned at conception, they are not influenced by reverse causation. In the absence of pleiotropy (*i.e.* genetic variants being associated with the disease through alternative pathways) and population stratification they can provide unconfounded estimates of disease risk (Figure 1).¹⁷ MR can therefore mitigate many of the limitations of conventional observational studies and is increasingly being used to estimate the impact of an intervention on disease risk.

We have recently used MR to examine possible links between glioma with 25-hydroxyvitamin D levels, a common proxy for vitamin D levels, obesity and atopy-related traits.^{18–20} Here we have extended our analysis to examine the relationship of 37 potentially modifiable factors with glioma risk, using a two-sample MR framework. Genetic variants associated with these 37 factors were identified from the largest genome-wide association study (GWAS) conducted to date or meta-analysis of each trait. We then evaluated the association of these variants with glioma in a large GWAS comprising 12,488 glioma cases and 18,169 control subjects.²¹

METHODS

Two-sample MR was conducted using data from a GWAS of glioma published by Melin *et al.*²¹ Ethical approval was not sought because these data came from summary statistics and no individual-level data were used.

Potentially modifiable risk factors

The aim of our study was to provide an insight into possible associations between modifiable factors which might influence the risk of glioma development. These factors were chosen on the basis of having been the subject of a previous investigation or having a role in development of a common cancer (Supp. Table 1). Specifically, we considered 19 lifestyle and dietary factors (height, plasma IGF-1, blood carnitine, blood methionine, blood selenium, blood zinc, circulating adiponectin, circulating carotenoids, iron status, serum calcium, vitamin [A1, B12, B6, E and 25-hydroxyvitamin D], fatty acids levels [mono-unsaturated, omega-3 and omega-6] and circulating fetuin-A). Additionally, 15 cardio-metabolic factors were considered (birth weight, HDL cholesterol, LDL cholesterol, total cholesterol, total triglycerides, basal metabolic rate, body fat percentage, body mass index, diastolic blood pressure, fasting glucose, fasting proinsulin, HbA1C levels, systolic blood pressure, waist circumference, waist-to-hip ratio). Lastly, three inflammatory factors (C reactive protein (CRP), IL-6 and serum IgE) were used as general markers of systemic inflammation and were included in the hypothesis driven analysis (Supp. Table 2).

Genetic instruments for putative risk factors

The genetic instruments, *i.e.* SNPs to be used as instrumental variables, were identified from recent meta-analyses or the largest GWAS published to date (Supp. Table 3). For each SNP, the chromosome position was recovered, the effect estimate expressed in standard deviations (SD) of the trait per-allele along with the corresponding standard error. We considered only continuous traits, as analysis of binary traits (such as disease status) with binary outcomes in two-sample MR frameworks can result in inaccurate causal estimates.^{18,19} The analysis was restricted to SNPs associated at genome-wide

significance (*i.e.* $P \leq 5 \times 10^{-8}$) in individuals of European ancestry, to satisfy the MR assumption that genetic variants are associated with the modifiable risk factor.²² To avoid co-linearity between SNPs for each trait, correlated SNPs were excluded using MR-Base (linkage disequilibrium threshold, $r^2 \geq 0.01$) within each trait, with SNPs with the strongest effect size retained.²³ These SNPs and their associated data are detailed in Supp. Table 3. The process used to generate SNPs used as instrumental variables is summarised in Supp. Fig. 1.

Glioma genotyping data

The association of each genetic instrument with glioma risk was examined using summary effect estimates and corresponding standard errors (SEs) from a recent meta-analysis of eight glioma GWAS.²¹ After imputation, this meta-analysis related >10 million genetic variants to glioma in 12,488 cases (6,183 GBM and 5,820 non-GBM) and 18,169 controls of European descent (Supp. Table 4).

Statistical analysis

The MR methodology assumes genetic variants used as instruments for a risk factor are only associated with the risk factor and not with any confounders or another causal pathway (Figure 1). Furthermore, to estimate the size of the causal effect with precision, associations must be linear and not affected by statistical interactions.²⁴ The causal effects for each SNP were first estimated using the Wald ratio (Supp. Table 5). Where multiple SNPs were available as instruments for the trait, causal effects were estimated using an inverse variance weighted fixed-effects (IVW-FE), maximum likelihood estimation (MLE), weighted median estimator (WME) and weighted mode-based estimator (WMBE) methodologies.^{17,25,26} We compared the calculated odd ratios and *P*-values from the four methods to assess the stability and validity of associations. Leave-one-out analysis was used to investigate whether a particular association was driven solely by a single SNP (Supp. Table 6).²⁷ The MR-Egger regression approach was used to evaluate the extent to which directional pleiotropy may affect the causal estimates.²⁸ Results were reported as odds ratios (OR_{SD}) with 95% confidence intervals (CIs) per genetically predicted SD unit increase in each putative risk factor. To address multiple testing, a Bonferroni-corrected *P*-value of 1.35×10^{-3} (*i.e.* $0.05/37$ putative risk factors) was considered significant,

with a $1.35 \times 10^{-3} < P\text{-value} < 0.05$ being considered suggestive of an association. The power of MR to demonstrate a causal effect depends in part on the proportion of variance in the risk factor explained by the genetic variants used as instruments, and we therefore estimated study power for each risk factor *a priori* (Supp. Table 2). Statistical analyses were undertaken using RStudio version 3.4.0²⁹ and MR-Base.²³ Figures were produced using Inkscape version 0.92.³⁰

Accepted Manuscript

RESULTS

Figures 2, 3 and 4 show the association between each of the 37 traits and risk of all glioma, GBM and non-GBM tumours respectively, using the Wald ratio and IVW-FE methodologies.

Dietary factors and lifestyle

There was suggestive evidence of an association between genetically predicted higher basal metabolic rate with increased risk of all glioma ($OR_{SD} = 1.08$, 95% CI: 1.00 - 1.16, $P = 0.047$) and GBM ($OR_{SD} = 1.13$, 95% CI: 1.03 - 1.24, $P = 0.009$). However, leave-one-out analysis showed the association was driven by the SNP rs78378222 at 17p13.3 (Supp. Table 6), a known glioma risk SNP.³¹ With exclusion of rs78378222, no association was observed; glioma ($OR_{SD} = 1.04$, 95% CI: 0.96 - 1.12, $P = 0.319$) and GBM ($OR_{SD} = 1.09$, 95% CI: 0.99 - 1.19, $P = 0.072$). Likewise, the apparent association between genetically predicted raised serum calcium levels and a lower risk of glioma ($OR_{SD} = 0.84$, 95% CI: 0.71 - 0.98, $P = 0.027$) and GBM ($OR_{SD} = 0.76$, 95% CI: 0.62 - 0.92, $P = 0.005$) was reliant on SNP rs780094 (Supp. Table 6). With exclusion of rs780094 the association was non-significant with glioma ($OR_{SD} = 0.92$, 95% CI: 0.69 - 1.23, $P = 0.574$) and GBM ($OR_{SD} = 0.86$, 95% CI: 0.60 - 1.22, $P = 0.391$). There was suggestive evidence for genetically predicted higher serum vitamin B6 levels being associated with lower risk of all glioma ($OR_{SD} = 1.31$, 95% CI: 1.06 - 1.62, $P = 0.012$) and non-GBM ($OR_{SD} = 1.40$, 95% CI: 1.06 - 1.85, $P = 0.017$), however the observation was again reliant on a single SNP (rs4654748). Similarly, the suggestive association between genetically predicted higher blood methionine levels and risk of glioma ($OR_{SD} = 1.66$, 95% CI: 1.13 - 2.45, $P = 0.010$) and GBM ($OR_{SD} = 1.77$, 95% CI: 1.10 - 2.85, $P = 0.019$) was reliant on a single SNP (rs320485).

The fatty acid (FA) metabolic pathway is complex, with SNPs influencing the metabolism of one FA often being associated with circulating concentrations of multiple FAs. To limit bias introduced by vertical and horizontal pleiotropy, we restricted our analysis to classes of FAs; such as omega-3 and omega-6 polyunsaturated FAs (PUFAs) and monounsaturated FAs (MUFAs), rather than individual fatty acids. In this restricted analysis, there was a suggestive association between genetically predicted

levels of MUFA with reduced risk of GBM ($OR_{SD} = 0.76$, 95% CI: 0.63 - 0.91, $P = 0.004$) and between omega-3 PUFA fatty acid levels with reduced risk of glioma ($OR_{SD} = 0.83$, 95% CI: 0.71 - 0.98, $P = 0.029$) and GBM ($OR_{SD} = 0.79$, 95% CI: 0.65 - 0.97, $P = 0.022$). Leave-one-out analysis, however, revealed that all associations were driven by the same Glucokinase Receptor Protein (*GCKR*) SNP (rs1260326, Supp. Table 6). With the exclusion of this SNP, no association remained significant.

Circulating adiponectin levels was the only exposure with an observed association with non-GBM risk only, ($OR_{SD} = 0.74$, 95% CI: 0.57 - 0.96, $P = 0.022$). However, once again leave-one-out analysis showed this association was reliant on rs6810075, upon its removal the association did not remain significant ($OR_{SD} = 0.75$, 95% CI: 0.55 - 1.04, $P = 0.086$).

Genetically predicted circulating levels of carnitine/selenium/zinc/25-hydroxyvitamin-D/carotenoids/fetuin-A/plasma IGF-I/vitamins (A1, B12 and E), height, iron status and circulating levels of mono-unsaturated/omega-3/omega-6 fatty acids showed no evidence for association with risk of all glioma, GBM or non-GBM (Figure 2, 3 and 4).

Cardiometabolic and inflammatory factors

Genetically predicted higher levels of low density lipoprotein (LDL) cholesterol showed suggestive evidence of an association with increased risk of glioma ($OR_{SD} = 1.10$, 95% CI: 1.01 - 1.21, $P = 0.035$) and non-GBM ($OR_{SD} = 1.15$, 95% CI: 1.02 - 1.30, $P = 0.021$). This finding contrasts with our earlier work which found no evidence for an association, however the previous analysis was based on fewer SNPs (26 vs. 44).¹⁸ Genetically predicted plasma total triglyceride (TG) also showed a suggestive association with risk of GBM ($OR_{SD} = 0.87$, 95% CI: 0.76 - 0.99, $P = 0.030$). Leave-one-out analysis showed that both LDL and TG associations were unstable. The LDL association being reliant on rs2131925 (Supp. Table 6), with exclusion of rs2131925 removing any association - glioma ($OR_{SD} = 1.09$, 95% CI: 0.99 - 1.19, $P = 0.085$) and non-GBM risk ($OR_{SD} = 1.12$, 95% CI: 0.98 - 1.27, $P = 0.090$). The TG association was reliant on the *GCKR* SNP (rs1260326, Supp. Table 6); with exclusion of rs1260326 also leading to the loss of association - GBM $OR_{SD} = 0.93$, 95% CI: 0.81 - 1.08, $P = 0.360$).

Genetically predicted higher HbA1C levels were also associated with increased glioma risk ($OR_{SD} = 1.28$, 95% CI: 1.06 - 1.53, $P = 0.010$) and non-GBM ($OR_{SD} = 1.30$, 95% CI: 1.02 - 1.65, $P = 0.036$). However, this association was also reliant on a single SNP (Supp. Table 6), with the exclusion of rs16926246 resulting in loss of any association - glioma ($OR_{SD} = 1.16$, 95% CI: 0.93 - 1.45, $P = 0.177$) and non-GBM risk ($OR_{SD} = 1.15$, 95% CI: 0.86 - 1.54, $P = 0.346$).

Genetically predicted total cholesterol was associated with non-GBM risk only ($OR_{SD} = 1.14$, 95% CI: 1.01 - 1.28, $P = 0.032$). However, this association was also reliant on a single SNP (Supp. Table 6b), with the exclusion of rs7412 resulting in loss of any association ($OR_{SD} = 1.11$, 95% CI: 0.97 - 1.27, $P = 0.116$).

Waist-to-hip ratio was associated with non-GBM risk only ($OR_{SD} = 1.33$, 95% CI: 1.04 - 1.70, $P = 0.022$). Leave-one-out analysis of this exposure revealed that removal of any one of three SNPs (rs10195252, rs1936805 or rs2820443) reduced the P -value to just above the 0.05 threshold for a suggestion of association; ($P = 0.059$, 0.055 and 0.053 respectively). This was less than the drastic reduction seen with the other exposures.

Genetically predicted plasma levels of interleukin-6 (IL-6) receptor subunit alpha (sRa)/C-reactive protein (CRP)/high density lipoprotein and serum IgE, birth weight, body fat percentage, body mass index, diastolic and systolic blood pressure, fasting glucose and proinsulin levels and waist circumference showed no evidence for association with risk of all glioma, GBM or non-GBM (Figure 2, 3 and 4).

DISCUSSION

Despite much research, the etiological basis of glioma has remained elusive. To gain insight into possible causal relationships, we have used a MR-based framework to investigate a range of potentially modifiable risk factors. Many of the factors and traits have either been the subject of previous conventional observational epidemiological studies with varying degrees of support, or are established risk factors for multiple common cancers consistent with them having a generic effect on tumour development.

A major advantage of the MR approach to establish causal links is the avoidance of biases that can influence conventional observational epidemiological studies. A challenge in its implementation is exclusion of pleiotropy, where one SNP is seen to effect two seemingly unrelated phenotypic traits, or an alternative direct causal pathway being the cause of an association.³² The IVW methodology only produces estimates of causal relationship when all genetic variants are valid instruments. To address such a shortcoming, and assess the robustness of estimates, as well as implementing IVW we also made use of WME and WMBE methods, which can provide unbiased causal effect estimates even when many genetic variants are invalid instruments.^{25,26} While not a case of direct pleiotropy, our analysis did show one example of a pleiotropic locus influencing both GCKR SNP (rs1260326) and serum calcium (rs780094). However, both of these exposures were discounted after leave-one-out analysis showed them both to be reliant on these single SNPs, before the need to investigate the association using WME or WMBE methodologies.

None of the 37 potential risk factors we evaluated showed a significant association with glioma risk after adjusting for multiple testing (i.e. $P < 1.35 \times 10^{-3}$) although nine showed suggestive evidence (i.e. $P < 0.05$). OR_{SD} and P -values estimated using IVW and MLE methods showed strong agreement with respect to the nine suggestively associated factors. Only two exposures showed consistent effect estimates across all four analytic methodologies (including WME and WMBE), highlighting the instability of any suggested associations identified by one method alone (Supp. Table 5). These

consistent exposures were HbA1C levels (GBM and non-GBM only) and serum calcium (GBM only), however leave-one-out analysis showed that these associations were reliant on single SNPs, thereby calling into question the validity of associations.

We cannot exclude the possibility that some of our findings have been affected by weak instrument bias, despite all factors having high F-statistics (>10) (Supp. Table 2). For all glioma, we had sufficient power to demonstrate a causal relationship (*i.e.* $>80\%$) and detect OR_{SD} of 1.33 for all but five risk factors. However, we only had $>80\%$ power to detect an OR_{SD} of 1.10 for five traits. Moreover, our power to demonstrate subtype-specific associations was even more restricted (Supp. Table 2a and 2b respectively). Hence, we cannot exclude the possibility that some of the traits examined may have very modest effects on glioma risk.

Accepting these caveats, in conclusion our analysis provides no convincing evidence to support any of the 37 potentially modifiable factors we examined having a significant association with glioma risk.

Accepted Manuscript

ACKNOWLEDGEMENTS

Contributors

CNS and AJC performed statistical analyses. CNS, AJC, BK and RSH drafted the manuscript. All authors reviewed, read and approved the final manuscript.

Funders

CNS supported by Cancer Research UK (C1298/A8362). JLB supported by P30 CA008748. MW supported by National Institutes of Health (P50CA097257 and 1R01CA207360), as well as the LOGLIO Collective and the Stanley D. Lewis and Virginia S. Lewis Endowed Chair in Brain Tumor Research,

Declaration of interests

The authors declare that they have no competing interests

Availability of data and material

Genetic instruments can be obtained through MR-Base (<http://www.mrbase.org/>)²³ or from the individual reference papers. Meta-analysed glioma GWAS data were obtained from the study by Melin et al.²¹, which is a meta-analysis of eight independent GWAS studies (UK³³, French³⁴, German³⁵, MDA³⁶, UCSF-SFAGS³⁶, GliomaScan³⁷, GICC³⁸ and UCSF/Mayo³⁹) detailed in Supp. Tables 4, 4a and 4b.

Genotype data from the Glioma International Case-Control Consortium Study GWAS are available from the database of Genotypes and Phenotypes (dbGaP) under accession phs001319.v1.p1. Additionally, genotypes from the GliomaScan GWAS can be accessed through dbGaP accession phs000652.v1.p1. Summary statistics from the glioma GWAS meta-analysis are available from the European Genome-phenome Archive (EGA, <http://www.ebi.ac.uk/ega/>) under accession number EGAS00001003372.

Supplementary data tables separate SNPs and analysis data by glioma (Supp. Table X), GBM (Supp. Table Xa) and non-GBM (Supp. Table Xb).

Accepted Manuscript

REFERENCES

1. N. A. Shonka, MD, J.S. Loeffler, MD, D. P. Cahill, MD, PhD, and J. De Groot M. Primary and Metastatic Brain Tumors | Cancer Network. *Cancer Netw.* 2015.
<https://www.cancernetwork.com/cancer-management/primary-and-metastatic-brain-tumors>. Accessed July 25, 2019.
2. Bondy ML, Scheurer ME, Malmer B, et al. Brain tumor epidemiology: Consensus from the Brain Tumor Epidemiology Consortium. *Cancer.* 2008;113(7):1953-1968.
doi:10.1002/cncr.23741
3. Peter ID, Linet MS, Heineman EF. Etiology of Brain Tumors in Adults. *Epidemiol Rev.* 2017;17(2):382-414. doi:10.1093/oxfordjournals.epirev.a036200
4. Leece R, Xu J, Ostrom QT, Chen Y, Kruchko C, Barnholtz-Sloan JS. Global incidence of malignant brain and other central nervous system tumors by histology, 2003-2007. *Neuro Oncol.* 2017;19(11):1553-1564. doi:10.1093/neuonc/nox091
5. Lian W, Wang R, Xing B, Yao Y. Fish intake and the risk of brain tumor: A meta-analysis with systematic review. *Nutr J.* 2017;16(1):1. doi:10.1186/s12937-016-0223-4
6. Kaplan S, Novikov L, Modan B. Nutritional Factors in the Etiology of Brain Tumors Potential Role of Nitrosamines, Fat, and Cholesterol. *Am J Epidemiol.* 1997;146(10):832-841.
doi:10.1093/oxfordjournals.aje.a009201
7. Niedermaier T, Behrens G, Schmid D, Schlecht I, Fischer B, Leitzmann MF. Body mass index, physical activity, and risk of adult meningioma and glioma: A meta-analysis. *Neurology.* 2015;85(15):1342-1350. doi:10.1212/WNL.0000000000002020
8. Edlinger M, Strohmaier S, Jonsson H, et al. Blood pressure and other metabolic syndrome factors and risk of brain tumour in the large population-based Me-Can cohort study. *J Hypertens.* 2012;30(2):290-296. doi:10.1097/HJH.0b013e32834e9176
9. Kyritsis AP, Bondy ML, Levin VA. Modulation of glioma risk and progression by dietary nutrients and antiinflammatory agents. *Nutr Cancer.* 2011;63(2):174-184.
doi:10.1080/01635581.2011.523807
10. Qin S, Wang M, Zhang T, Zhang S. Vitamin E intake is not associated with glioma risk: Evidence from a meta-analysis. *Neuroepidemiology.* 2014;43(3-4):253-258.
doi:10.1159/000369345
11. Kuan AS, Green J, Kitahara CM, et al. Diet and risk of glioma: combined analysis of 3 large prospective studies in the UK and USA. *Neuro Oncol.* 2019;21(7):944-952.
doi:10.1093/neuonc/noz013
12. Seliger C, Ricci C, Meier CR, et al. Diabetes, use of antidiabetic drugs, and the risk of glioma. *Neuro Oncol.* 2016;18(3):340-349. doi:10.1093/neuonc/nov100
13. Ulmer H, Borena W, Rapp K, et al. Serum triglyceride concentrations and cancer risk in a

- large cohort study in Austria. *Br J Cancer*. 2009;101(7):1202-1206.
doi:10.1038/sj.bjc.6605264
14. Liang R, Li J, Li M, et al. Clinical significance of pre-surgical serum lipid levels in patients with glioblastoma. *Oncotarget*. 2017;8(49):85940-85948. doi:10.18632/oncotarget.20730
 15. Spiller W, Slichter D, Bowden J, Davey Smith G. Detecting and correcting for bias in Mendelian randomization analyses using Gene-by-Environment interactions. *Int J Epidemiol*. April 2018:187849. doi:10.1093/ije/dyy204
 16. Johansen C, Schüz J, Andreassen AMS, Dalton SO. Study designs may influence results: The problems with questionnaire-based case-control studies on the epidemiology of glioma. *Br J Cancer*. 2017;116(7):841-848. doi:10.1038/bjc.2017.46
 17. Burgess S, Butterworth A, Thompson SG. Mendelian randomization analysis with multiple genetic variants using summarized data. *Genet Epidemiol*. 2013;37(7):658-665. doi:10.1002/gepi.21758
 18. Disney-Hogg L, Sud A, Law PJ, et al. Influence of obesity-related risk factors in the aetiology of glioma. *Brit J Cancer*. 2018;118(7):1020-1027. doi:10.1038/s41416-018-0009-x
 19. Disney-Hogg L, Cornish AJ, Sud A, et al. Impact of atopy on risk of glioma: A Mendelian randomisation study. *BMC Med*. 2018;16(1):1-13. doi:10.1186/s12916-018-1027-5
 20. Takahashi H, Cornish AJ, Sud A, et al. Mendelian randomisation study of the relationship between Vitamin D and risk of glioma. *Sci Rep-UK*. 2018;8(1):2339. doi:10.1038/s41598-018-20844-w
 21. Melin BS, Barnholtz-Sloan JS, Wrensch MR, et al. Genome-wide association study of glioma subtypes identifies specific differences in genetic susceptibility to glioblastoma and non-glioblastoma tumors. *Nat Genet*. 2017;49(5):789-794. doi:10.1038/ng.3823
 22. Davies NM, Holmes M V, Davey Smith G. Reading Mendelian randomisation studies: A guide, glossary, and checklist for clinicians. *BMJ*. 2018;362:k601. doi:10.1136/bmj.k601
 23. Hemani G, Zheng J, Elsworth B, et al. The MR-Base platform supports systematic causal inference across the human phenome. *Elife*. 2018;7:1-29. doi:10.7554/eLife.34408.001
 24. Lawlor DA, Harbord RM, Sterne JAC, Timpson N, Smith GD. Mendelian randomization: Using genes as instruments for making causal inferences in epidemiology. *Stat Med*. 2008;27(8):1133-1163. doi:10.1002/sim.3034
 25. Hartwig FP, Smith GD, Bowden J. Robust inference in summary data Mendelian randomization via the zero modal pleiotropy assumption. *Int J Epidemiol*. 2017;46(6):1985-1998. doi:10.1093/ije/dyx102
 26. Bowden J, Davey Smith G, Haycock PC, Burgess S. Consistent Estimation in Mendelian Randomization with Some Invalid Instruments Using a Weighted Median Estimator. *Genet Epidemiol*. 2016;40(4):304-314. doi:10.1002/gepi.21965
 27. Burgess S, Bowden J, Fall T, Ingelsson E, Thompson SG. Sensitivity analyses for robust

- causal inference from mendelian randomization analyses with multiple genetic variants. *Epidemiology*. 2017;28(1):30-42. doi:10.1097/EDE.0000000000000559
28. Bowden J, Smith GD, Burgess S. Mendelian randomization with invalid instruments: Effect estimation and bias detection through Egger regression. *Int J Epidemiol*. 2015;44(2):512-525. doi:10.1093/ije/dyv080
 29. RStudio Team. RStudio: Integrated Development Environment for R. 2018. <http://www.rstudio.com/>.
 30. Harrington B. INKSCAPE. 2019. <https://www.inkscape.org>.
 31. Stacey SN, Sulem P, Jonasdottir A, et al. A germline variant in the TP53 polyadenylation signal confers cancer susceptibility. *Nat Genet*. 2011;43(11):1098-1103. doi:10.1038/ng.926
 32. Hemani G, Bowden J, Davey Smith G. Evaluating the potential role of pleiotropy in Mendelian randomization studies. *Hum Mol Genet*. 2018;27(R2):R195-R208. doi:10.1093/hmg/ddy163
 33. Cardis E, Richardson L, Deltour I, et al. The INTERPHONE study: design, epidemiological methods, and description of the study population. *Eur J Epidemiol*. 2007;22(9):647-664. doi:10.1007/s10654-007-9152-z
 34. Sanson M, Hosking FJ, Shete S, et al. Chromosome 7p11.2 (EGFR) variation influences glioma risk. *Hum Mol Genet*. 2011;20(14):2897-2904. doi:10.1093/hmg/ddr192
 35. Kinnersley B, Labussière M, Holroyd A, et al. Genome-wide association study identifies multiple susceptibility loci for glioma. *Nat Commun*. 2015;6(1):8559. doi:10.1038/ncomms9559
 36. Shete S, Hosking FJ, Robertson LB, et al. Genome-wide association study identifies five susceptibility loci for glioma. *Nat Genet*. 2009;41(8):899-904. doi:10.1038/ng.407
 37. Rajaraman P, Melin BS, Wang Z, et al. Genome-wide association study of glioma and meta-analysis. *Hum Genet*. 2012;131(12):1877-1888. doi:10.1007/s00439-012-1212-0
 38. Amirian ES, Armstrong GN, Zhou R, et al. The Glioma International Case-Control Study: A Report From the Genetic Epidemiology of Glioma International Consortium. *Am J Epidemiol*. 2015;183(2):kwv235. doi:10.1093/aje/kwv235
 39. Wrensch M, Jenkins RB, Chang JS, et al. Variants in the CDKN2B and RTEL1 regions are associated with high-grade glioma susceptibility. *Nat Genet*. 2009;41(8):905-908. doi:10.1038/ng.408

FIGURE LEGENDS

Figure 1: Principles of Mendelian Randomisation (MR) and the assumptions required to obtain an unbiased causal effect estimate. The three assumptions are: (1) genetic variants used as instrumental variables are only associated with the modifiable risk factor (X); (2) genetic variants only influence the risk of developing glioma (Y) through the modifiable risk factor (X); (3) genetic variants are not associated with any measured or unmeasured confounders. Single Nucleotide Polymorphism (SNP).

Figure 2: Odds ratios for associations between genetically predicted risk factors and glioma. Results reported as odds ratios (OR_{SD}) and 95% confidence intervals (CIs) per genetically predicted standard deviation (SD) unit increase in the risk factor. A fixed-effects inverse variance weighted (IVW-FE) method was used to summarize Wald ratio estimates from individual single nucleotide polymorphism (SNPs). *P*-values suggestive of an association (range: 0.05 – 1.35×10^{-3}) indicated by *, and significant *P*-values ($< 1.35 \times 10^{-3}$) indicated by **. Association (Assoc.); IGF: insulin-like growth factor; IL-6 sRa: interleukin 6 receptor subunit alpha; IgE: Immunoglobulin E; HbA1C: glycated haemoglobin.

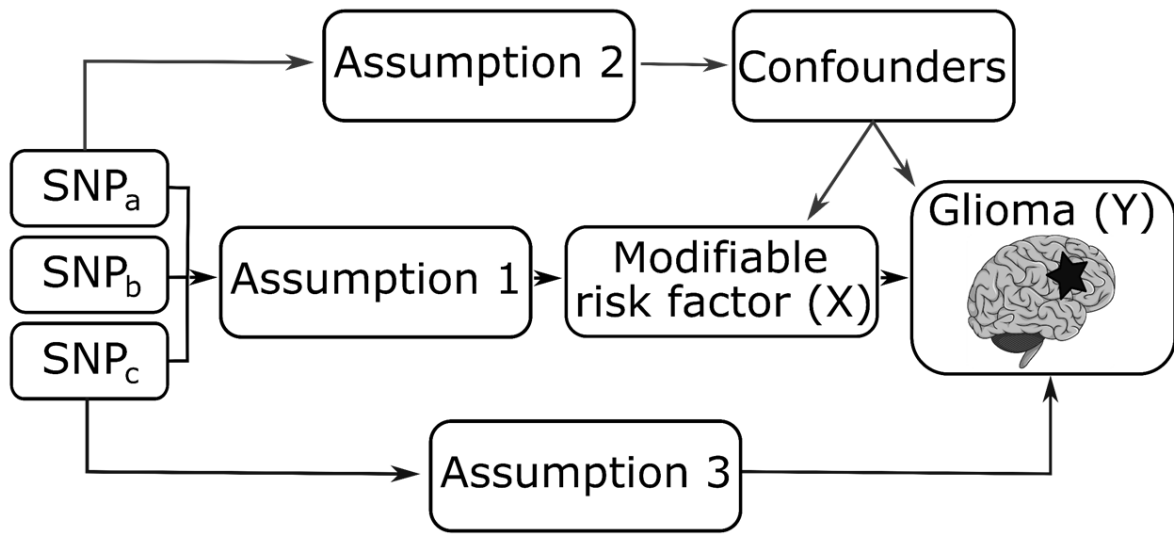
Figure 3: Odds ratios for associations between genetically predicted risk factors and glioblastoma multiforme (GBM). Results reported as odds ratios (OR_{SD}) and 95% confidence intervals (CIs) per genetically predicted standard deviation (SD) unit increase in the risk factor. A fixed-effects inverse variance weighted (IVW-FE) method was used to summarize Wald ratio estimates from individual single nucleotide polymorphism (SNPs). *P*-values suggestive of an association (range: 0.05 – 1.35×10^{-3}) indicated by *, and significant *P*-values ($< 1.35 \times 10^{-3}$) indicated by **. Association (Assoc.); IGF: insulin-like growth factor; IL-6 sRa: interleukin 6 receptor subunit alpha; IgE: Immunoglobulin E; HbA1C: glycated haemoglobin.

Figure 4: Odds ratios for associations between genetically predicted risk factors and non-GBM. Results reported as odds ratios (OR_{SD}) and 95% confidence intervals (CIs) per genetically predicted

standard deviation (SD) unit increase in the risk factor. A fixed-effects inverse variance weighted (IVW-FE) method was used to summarize Wald ratio estimates from individual single nucleotide polymorphism (SNPs). *P*-values suggestive of an association (range: 0.05 – 1.35 x 10⁻³) indicated by *, and significant *P*-values (< 1.35 x 10⁻³) indicated by **. Association (Assoc.); IGF: insulin-like growth factor; IL-6 sRa: interleukin 6 receptor subunit alpha; IgE: Immunoglobulin E; HbA1C: glycated haemoglobin.

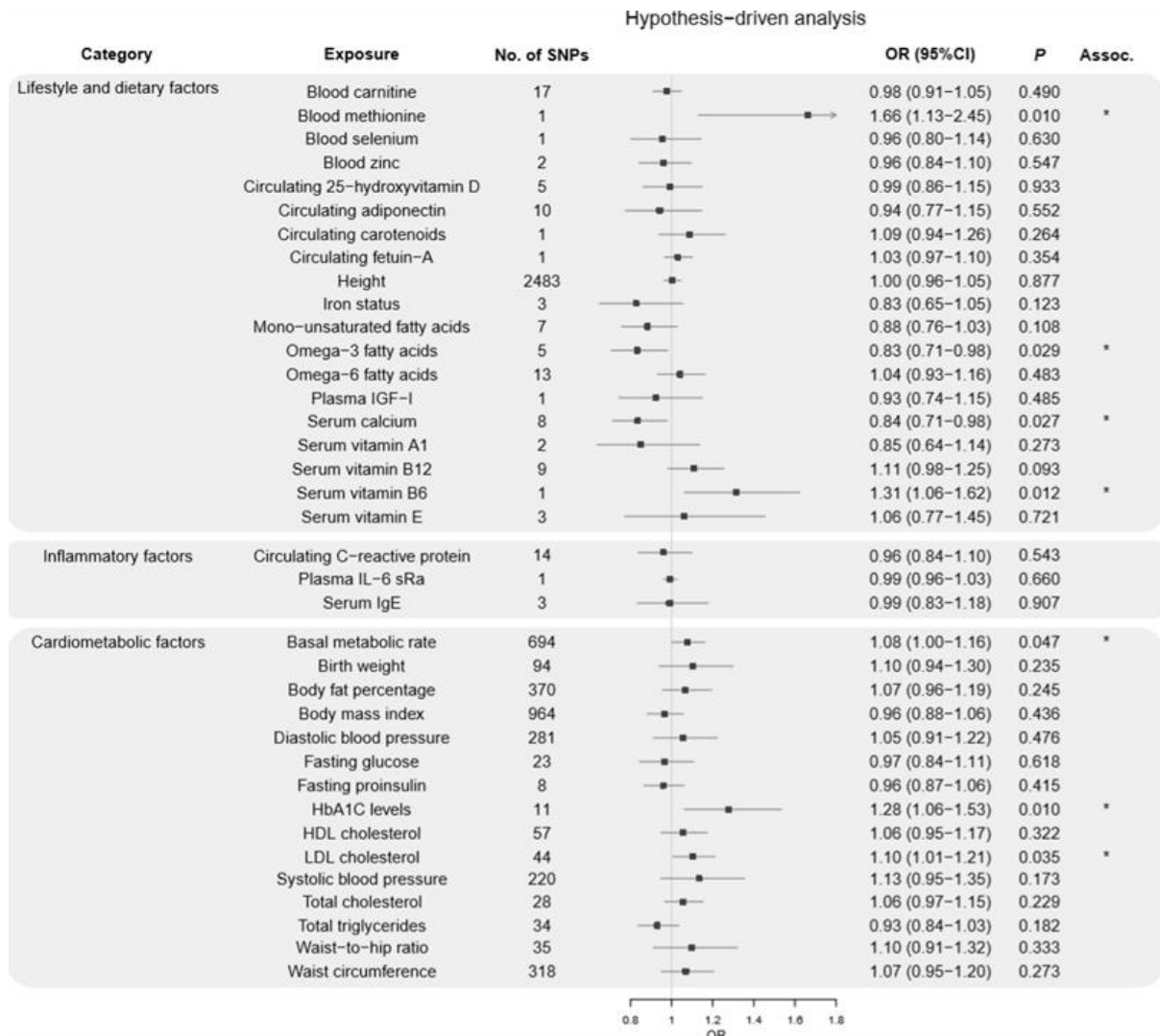
Accepted Manuscript

Figure 1



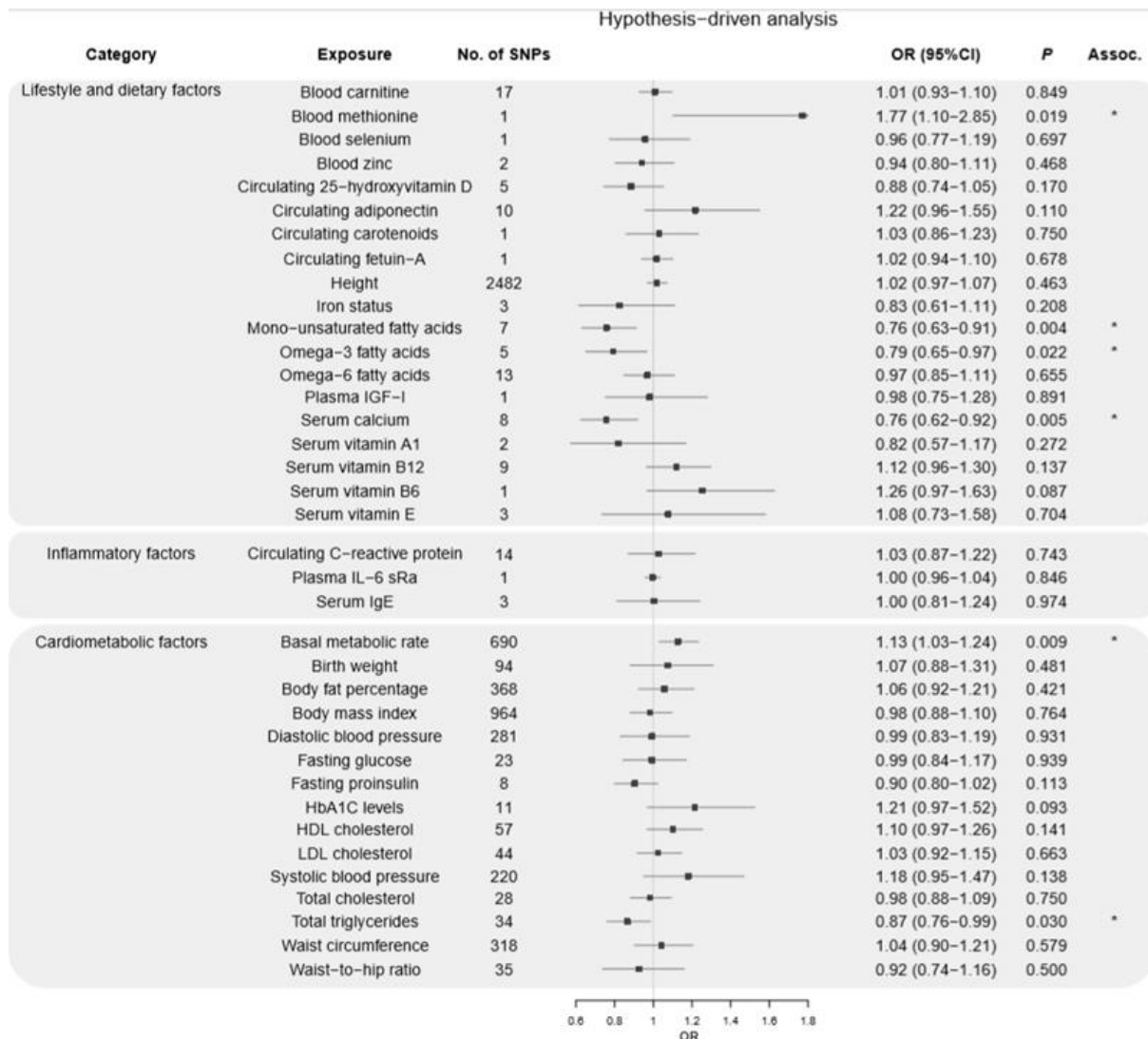
Accepted Manuscript

Figure 2



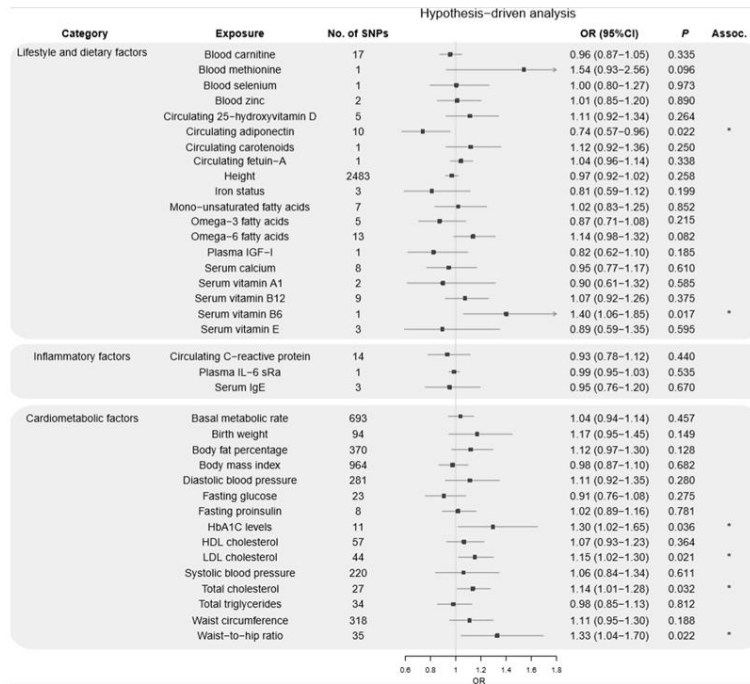
ACCEPT

Figure 3



ACCEPTED

Figure 4



Accepted Manuscript