

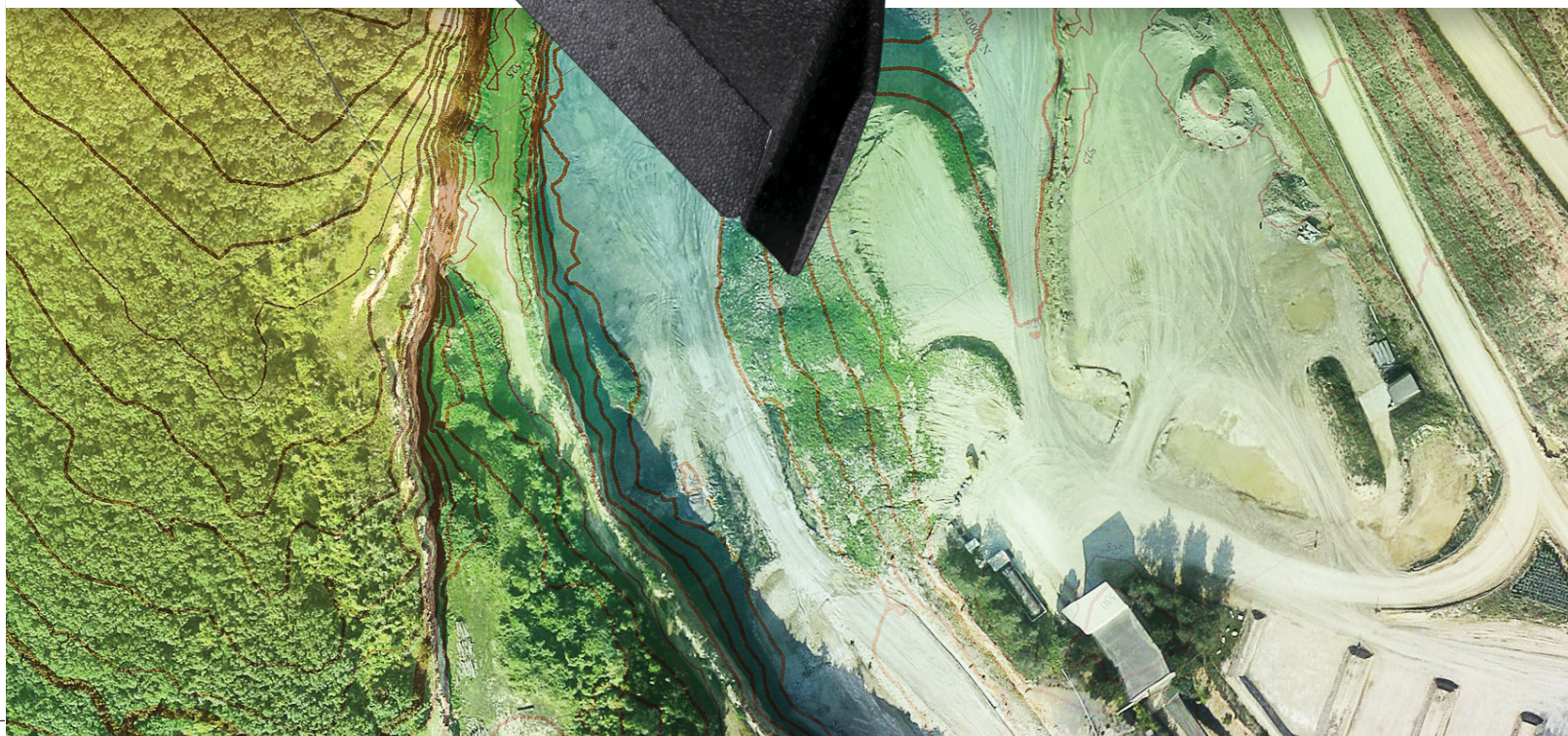
Gather millions of data points **in one short flight**

Spend days in the field, **not weeks**

Achieve high absolute X, Y, Z **accuracy** – without ground control points (eBee RTK)

Improve staff safety **on dangerous sites**

Focus on **analysing data**, not collecting it





eBee⁺

Aerial **efficiency**,
photogrammetric **accuracy**

www.senseFly.com/eBeePlus



Large coverage for optimal efficiency

The eBee Plus can map more square kilometres per flight, than any drone in its weight class, allowing you to maximise your efficiency and plan projects with confidence.

High Precision on Demand (HPoD)

The eBee Plus includes built-in RTK/PPK functionality that can be activated either out of the box or later when required. It's survey-grade accuracy you control, without the need for ground control points—for less time in the field and more time putting your data to work.

Project-perfect payloads

The eBee Plus offers a camera to suit every application, including the senseFly S.O.D.A. (supplied), the first camera designed for photogrammetric drone mapping.

Book your demo today!
www.geomatika-smolcak.hr



Join us online

