

Journal Pre-proofs

Estimating uncertainty in divergence times among three-spined stickleback clades using the multispecies coalescent

Bohao Fang, Juha Merilä, Michael Matschiner, Paolo Momigliano

PII: S1055-7903(19)30098-3
DOI: <https://doi.org/10.1016/j.ympev.2019.106646>
Reference: YMPEV 106646

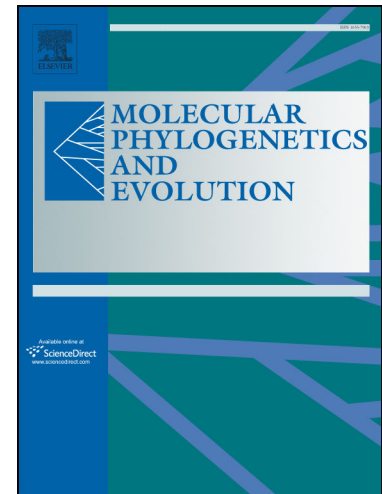
To appear in: *Molecular Phylogenetics and Evolution*

Received Date: 12 February 2019
Revised Date: 20 August 2019
Accepted Date: 9 October 2019

Please cite this article as: Fang, B., Merilä, J., Matschiner, M., Momigliano, P., Estimating uncertainty in divergence times among three-spined stickleback clades using the multispecies coalescent, *Molecular Phylogenetics and Evolution* (2019), doi: <https://doi.org/10.1016/j.ympev.2019.106646>

This is a PDF file of an article that has undergone enhancements after acceptance, such as the addition of a cover page and metadata, and formatting for readability, but it is not yet the definitive version of record. This version will undergo additional copyediting, typesetting and review before it is published in its final form, but we are providing this version to give early visibility of the article. Please note that, during the production process, errors may be discovered which could affect the content, and all legal disclaimers that apply to the journal pertain.

© 2019 The Authors. Published by Elsevier Inc.



Estimating uncertainty in divergence times among three-spined stickleback clades using the multispecies coalescent

Bohao Fang¹, Juha Merilä¹, Michael Matschiner^{2,3} and Paolo Momigliano¹

¹*Ecological Genetics Research Unit, Organismal and Evolutionary Biology Research Program, Faculty of Biological and Environmental Sciences, University of Helsinki, FI-00014 Helsinki, Finland*

²*Department of Palaeontology and Museum, University of Zurich, Karl-Schmid-Strasse 4, 8006 Zurich, Switzerland*

³*Centre for Ecological and Evolutionary Synthesis (CEES), Department of Biosciences, University of Oslo, 0316 Oslo, Norway*

Correspondence to: BF

E-mail: bohao.fang@helsinki.fi

Running title: Stickleback phylogenomics

Abstract

Incomplete lineage sorting (ILS) can lead to biased divergence time estimates. To explore if and how ILS has influenced the results of a recent study of worldwide phylogeny of three-spined sticklebacks (*Gasterosteus aculeatus*), we estimated divergence times among major clades by applying both a concatenation approach and the multispecies coalescent (MSC) model to single-nucleotide polymorphisms. To further test the influence of different calibration strategies, we applied different calibrations to the root and to younger nodes in addition to the ones used in the previous study. Both the updated calibrations and the application of the MSC model influenced divergence time estimates, sometimes significantly. The new divergence time estimates were more ancient than in the previous study for older nodes, whereas the estimates of younger nodes were not strongly affected by the re-analyses. However, given the applied MSC method employs a simple substitution model and cannot account for changes in population size, we suggest that different analytical approaches and calibration strategies should be used in order to explore uncertainty in divergence time estimates. This study provides a valuable reference timeline for the ages of worldwide three-spined stickleback populations and emphasizes the need to embrace, rather than obscure, uncertainties around divergence time estimates.

Keywords: multispecies coalescent, *Gasterosteus*, phylogenomics, RAD-seq, SNP, threespine stickleback

1. Introduction

The development of genome complexity reduction methods (such as restriction site associated DNA sequencing, RAD-seq), dropping sequencing costs and new analytical approaches have brought phylogenomics within the reach of most researchers. However, constructing phylogenies from multiple loci scattered along the genome poses serious challenges: different areas of the genome may undergo different sorting processes, resulting in individual gene trees that are in conflict with each other and with the true species tree (Maddison and Knowles, 2006). When lineage sorting is incomplete (ILS), phylogenetic analyses based on the concatenation of multiple unlinked loci may inflate statistical support, and in some cases lead to biases in branch lengths and divergence time estimates (Mendes and Hahn, 2016; Ogilvie et al., 2017). The multispecies coalescent (MSC) model incorporates incomplete lineage sorting, and may therefore often provide a better alternative for inferring phylogenies using multiple loci, yet most methods based on the MSC are computationally prohibitive to run on more than a few hundred loci and few tens of individuals.

Stange et al. (2018) extended the MSC method implemented in SNAPP (Bryant et al., 2012) to allow Bayesian divergence time estimation with SNP (single nucleotide polymorphism) data and found that their approach can overcome biases resulting from ILS. However, to achieve feasible run times with SNAPP's computationally demanding MSC implementation, the model chosen by Stange et al. (2018) had to make a few simplistic assumptions, which may also introduce novel biases under certain conditions. For example, the model of Stange et al. (2018) assumes an identical population size (Θ) for all lineages, an assumption that is often violated (for example in repeated range expansions) and may lead to overestimating divergence time in smaller populations (Stange et al., 2018). Previous work has shown that short-term mutation rates decay exponentially to long-term substitution rates within a few hundred thousand to a few million years (Ho et al., 2011), and therefore the application of a strict molecular clock when lineages of very different ages are included in the analyses (for example representing a recent radiation) may overestimate divergence times of younger nodes. This time-dependency of rates is usually attributed to the fact that slightly deleterious mutations are removed by purifying selection over time (Ho et al., 2005; BurrIDGE et al., 2008; Membrebe et al., 2019). It is therefore not clear how important this phenomenon is for RADseq data: while the sampled SNPs are unlikely to be under selection, it is likely that at least a portion of the sampled polymorphism is affected by linked background selection (Kern and Hahn, 2018).

In a recent study, Fang et al. (2018) reconstructed the worldwide phylogenetic relationships and colonization history of three-spined stickleback *Gasterosteus aculeatus*, a key model organism in ecology and evolutionary biology, using relaxed molecular clock Bayesian analyses. A time-calibrated phylogeny was built using a supermatrix of 8,079 concatenated SNPs derived from RAD sequencing. The study identified three divergent major clades corresponding to the old Pacific lineage, a younger lineage including southern European populations and a third postglacial lineage including Northern European and Western Atlantic populations. Divergence times among these major clades were found to be far more recent than indicated by previous studies (Fang et al., 2018). Since the applied method using standard Bayesian inference in BEAST 2 did not

account for ILS, it is possible, in light of Stange et al.'s (2018) findings, that estimates of divergence times between major lineages were biased. Stange et al. (2018) reported that when the age of the root is constrained, ILS may lead to overestimation of divergence times of younger nodes when concatenation is used. In Fang et al. (2018), the use of very recent calibration points could potentially have led to bias in the opposite direction in the presence of ILS, leading to an underestimation of divergence times for intermediate nodes.

Three-spined sticklebacks have undergone rapid and repeated “adaptive radiation” towards various phenotypes while colonizing freshwater habitats since the Last Glacial Maximum (LGM, ca. 26.5–20 kya, thousands of years ago; Bell and Foster, 1994; McKinnon and Rundle, 2002; Clark et al., 2009). Hence, these recently diverged populations and lineages, such as Northern European populations, are likely to exhibit a large degree of incomplete lineage sorting (Maddison and Knowles, 2006; Fang et al., 2018).

Here, we reanalyze a subset of the data from Fang et al. (2018) using Stange et al.'s (2018) method in order to test whether ILS may have led to biased estimates of divergence times. It should be noted that the assumption of a constant population size (Θ) across lineages is almost certainly not met in this system, since three-spined stickleback radiations have involved multiple bottlenecks (Taylor and McPhail, 1999, 2000), particularly when freshwater habitats were colonized. Depending on the strength of selection on genome-wide SNPs, we might expect heterogeneous mutation rates across lineages, reflective of the rapid exponential decay of mutation rate observed within the first few hundred thousands to millions of years (Ho et al., 2005). These biases could lead to underestimation or overestimation of the divergence times with respect to Fang et al.'s (2018) results when Stange et al.'s (2018) method is applied, depending on whether old or young nodes are calibrated. Furthermore, since the publication of Fang et al. (2018), the divergence time estimate between the outgroup taxon (*G. nipponicus*) and *G. aculeatus* has been refined from 2 mya to 0.68-1.0 mya (Ravinet et al., 2018), and this could affect divergence times within *G. aculeatus*. Therefore, the results of the extensive reanalysis conducted in this study, together with those from Fang et al. (2018), should present a range of minimum and maximum ages for worldwide stickleback populations, giving rise to a useful reference timeline for the research of the three-spined sticklebacks.

2. Material and methods

The software SNAPP (Bryant et al., 2012) would require prohibitively long run-times for the analysis of the full dataset of Fang et al. (2018; see: Chifman and Kubatko, 2014). Therefore, a subset of 39 *G. aculeatus* individuals, originating from 19 different populations, as well as two individuals representative for the outgroup taxon *G. nipponicus* were extracted from the published dataset of Fang et al. (2018). These representative individuals were chosen so that the sampled populations covered the entire extant species distribution range (sampling locations given in Figure 1b). Only populations from which at least two individuals had been sequenced by Fang et al. (2018) were included as population size estimates could otherwise be unreliable. Within the sampled populations, we chose the two individuals sequenced from Fang et al. (2018) that had the highest sequencing depth to minimize missing data as SNAPP requires a SNP matrix in which each site has data in at least one individual per population. Divergence times were then estimated with the MSC model in SNAPP following Stange et al. (2018). We further estimated divergence times using concatenation as

in Fang et al. (2018), applied to the same subset of individuals as used in MSC analyses, to allow a direct comparison of the estimates from the two approaches. In these analyses, we concatenated the same number of loci and used the same calibration strategies (see below) as in the MSC analyses.

2.1 Specification of calibration points

As for the root calibration point, we re-evaluated the divergence time between *G. aculeatus* and the outgroup taxon *G. nipponicus*. Fang et al. (2018) accepted 2 mya as the divergence time between the two species based on genetic divergence and geological information (Higuchi and Goto, 1996; Higuchi et al., 2014). However, a subsequent study redefined this estimate to 0.68-1.0 mya on the basis of multiple demographic analyses (Ravinet et al., 2018). Given these widely varying estimates, the root calibration point of 2 mya used by Fang et al. (2018) might have led to overestimation of divergence times of the major lineages. Therefore, we re-evaluated the divergence times among different stickleback clades by considering three possible root calibration points (*viz.* 2 mya, 1 mya and 0.68 mya).

In terms of geographic calibrations, Fang et al. (2018) initially used two calibration points which were the Black Sea (7 kya; Gökaşan et al., 1997; Ballard et al., 2000; Ryan and Pitman, 2000) and the Baltic Sea openings (10 kya; Voipio, 1981; Nilsson et al., 2001; Leppäkoski et al., 2002). However, as we ran some initial analyses using the MSC approach we noticed that all calibrations schemes (except the Black Sea calibration) resulted in more ancient times of most recent common ancestor (TMRCA) of the Black Sea and Aegean Sea populations than that of the northern European populations. Although Fang et al. (2018) refuted a pre-Pleistocene origin of contemporary Black Sea sticklebacks on the basis of calibration-free phylogenetic analyses, the current Aegean Sea samples might not be the direct sister group of the Black Sea samples. Therefore, the divergence of current samples from the Aegean Sea and Black Sea could predate the origin of the Black Sea population.

Consequently, the Black Sea calibration would not be applicable to the samples in this study, and therefore we omitted the Black Sea calibration point from the re-analyses.

Hence, on the basis of the latest research and a re-evaluation of the previously applied geographic calibration points, we used the root divergence times 2 mya, 1 mya and 0.68 mya, and the TMRCA of Baltic Sea 10 kya, as calibration points. The four age constraints were implemented with normally distributed densities centered at 2 mya (SD: 0.08 mya), 1 mya (SD: 0.08 mya), 0.68 mya (SD: 0.05), and 10 kya (SD: 0.00035), respectively. The standard deviations of each calibration were chosen so that 99% of the prior distribution for each of the three root calibration points would not overlap. We first performed independent analyses with each one of the above four calibration points, and then combined each of the three root constraints separately with the young Baltic Sea age constraint in subsequent analyses. Consequently, seven sets of calibration schemes were applied, in parallel to the two approaches (MSC and concatenation).

2.2 Divergence time estimation

We subsampled 37 individuals representing 19 populations, as well as two individuals of the outgroup taxon *G. nipponicus*, using VCFtools v0.1.15 (Danecek et al., 2011). From a full dataset of 8,079 concatenated SNPs for 128 samples (Fang et al., 2018), a set of 1,183 bi-allelic SNPs without any missing data was retained in variant

call format (VCF). The genome-wide distribution of 1,183 SNPs is shown in Appendix Figure 1. The VCF file was converted to a PHYLIP format SNP-matrix using the Python script "vcf2phylip" (<https://github.com/edgardomortiz/vcf2phylip>), and the XML input file for SNAPP analyses was prepared using the Ruby script "snapp_prep.rb" (https://github.com/mmatschiner/snapp_prep).

The input for the Ruby script included the above SNP matrix, a starting tree, population information, biogeographic divergence-time constraints and the number of Markov-Chain Monte Carlo (MCMC) iterations. For the starting tree, we trimmed the full phylogenetic tree of 128 individuals (Fang et al., 2018) to 39 individuals, and collapsed the trimmed tree into a tree of 19 monophyletic populations, using the R packages APE and BioGeoBEARS (Paradis et al., 2004; Matzke, 2013). To reduce computational demand, the tree topology was set to be fixed in the SNAPP analyses (as in Stange et al., 2018). All input files, pipelines and produced XML files for SNAPP analyses are available from the DRYAD repository (doi: xxx).

The generated XML files were used for analyses with the SNAPP v.1.3.0 (Bryant et al., 2012) package in BEAST2 v.2.4.7 (Bouckaert et al., 2014). For each calibration strategy, we ran two independent SNAPP analyses with 100 million MCMC iterations. Stationarity and convergence of chains were visually checked in TRACER v1.6 (ESS > 1000; <http://beast.bio.ed.ac.uk/tracer/>). The program DensiTree v.2.2.6 (Bouckaert, 2010) was used to visualize the SNAPP trees after discarding the first 10% of each MCMC chain as burn-in (Appendix Figure 1). A maximum-clade-credibility summary tree was generated with TreeAnnotator (Drummond et al., 2012) and visualized in FigTree v.1.4.3 (<http://tree.bio.ed.ac.uk/software/figtree/>) (DRYAD: doi xxx).

To compare divergence times estimates obtained from MSC and the concatenation approach, a subset of 1,183 randomly selected RAD loci (the same number as the unlinked SNPs used in SNAPP) was concatenated from the iPyRAD "loci" output file from the Fang et al. (2018) using the R package Radami (Hipp et al., 2014). Employing the seven calibration schemes, the 1,183 concatenated loci of the same set of samples (39 individuals) were used for concatenation-based phylogenetic inference in BEAST2 v.2.4.7 as in Fang et al. (2018).

In addition, to assess the possible effect of subsampling individuals, we performed the analyses described above to the full dataset (128 individuals) of Fang et al. (2018; i.e. phylogenetic inference based on 1,183 concatenated loci of 128 individuals under seven calibration schemes). Comparison of the divergence times inferred from the full and the subsampled datasets suggested that the two sets of samples yielded similar divergence time estimates for all nodes, showing highly overlapping estimates (bounds of the 95% highest probability density, HPD) under all seven calibrations schemes (Appendix Figure 2). Hence, the subsample of 39 individuals used in the study was considered to yield reliable and comparable divergence time estimates as the full dataset used by Fang et al. (2018).

3. Results and Discussion

The inferred divergence times were influenced both by the use of different calibration schemes and by the choice of analytical approach (concatenation vs. MSC; Figure 1a). Combining the estimates from the two approaches, the estimated TMRCA for the extant Northern European lineages (node C) varied from 11.3-18.3 kya (single Baltic calibration under MSC) to 137.7-460.5 kya (single 2 mya root calibration under concatenation). The divergence time between the Atlantic and Pacific lineages (node B), on the other hand,

was estimated ranging from 29.5-71.9 kya (single Baltic Sea calibration under concatenation) to 295.3-959.3 kya (single 2 mya root calibration under concatenation). Moreover, the estimates for the TMRCA of all three-spined sticklebacks (node A) varied between 36.9-96.7 kya (single Baltic Sea calibration under concatenation) and 383.1-1250.1 kya (single 2 mya root calibration under concatenation; Figure 1a).

However, several of these estimates set the origin of the Baltic Sea populations to predate the LGM (Figure 1a), which is highly unlikely given the fact that the Baltic Sea did not exist during the LGM (Bell and Foster, 1994; McKinnon and Rundle, 2002; Clark et al., 2009; Stroeven et al., 2016; Fang et al., 2018). For instance, in the analyses using concatenated data, all the three strategies with single root calibration (in this case with age constraints at 0.68, 1 and 2 mya) produced divergence time estimates for the Baltic Sea population that predated the formation of the Baltic Sea. Stange et al. (2018) found that root calibration in combination with concatenated data can lead to extreme overestimation of young divergence times, and in light these known biases, we conclude that the divergence time estimates of young nodes based on analyses of concatenated data with root calibration are likely to be strongly biased. In the analyses performed under the MSC, on the other hand, only the application of the single most ancient root age constraint (2 mya) produced divergence times in conflict with known geological history (Figure 1a). Whenever both calibration points (root calibration and Baltic Sea) were used, both methods yielded similar (i.e. with overlapping HPD) divergence time estimates, though concatenation yielded always wider HPDIs.

Using analytical approaches that are likely to under- or overestimate divergence times due to different potential biases, and using seven sets of calibrations reflecting uncertainty about the true divergence time between *G. aculeatus* and *G. nipponicus*, we can propose the range of divergence times among major three-spined stickleback clades. We frame the divergence time ranges for nodes A, B and C, by casting the maximum and minimum divergence time among those estimates (HPDIs). If we exclude the analyses of concatenated data using only the root calibration, which have been shown by Stange et al. (2018) to overestimate young divergence times and produced in this study estimates that clearly conflict with the known geological history of the Baltic Sea, we conclude that the divergence among major clades (i.e. nodes A, B and C; Figure 1) of the three-spined sticklebacks occurred as follows: The TMRCA of all *G. aculeatus* populations is 36.9-346.5 kya, the divergence between Pacific and Atlantic lineages occurred 29.5-226.6 kya, and the TMRCA for the extant Northern European lineages is set at 11.3-95.2 kya.

The new TMRCA for nodes A, B and C are older than the original estimates in Fang et al. (2018; Figure 1a). Likewise, the upper bounds of the new estimates are higher than those of the original estimates, with greater increments for older nodes. For nodes A, B and C, the upper bounds for the new estimates are 4.4 times (346.5 vs. 78.7 kya), 3.8 times (226.6 vs. 59.4 kya) and 2.5 times (95.2 vs. 38.0 kya) higher than the Fang et al (2018) estimates, respectively, while the lower bounds of the estimates are similar (node A: 36.9 vs. 37.3 kya; node B: 29.5 vs. 31.3 kya; node C: 11.3 vs. 17.0 kya). As re-analyses of the dataset from Fang et al. (2018) using the same concatenation approach, but excluding the Black Sea age constraint, also produced older estimates (Appendix Figure 2), we conclude that not only the use of concatenation, but also the incorrect choice of one of the calibration points, may have biased previous estimates. However, it should also be noted that TMRCA estimates under MSC method in this study for all three-spined sticklebacks (node A), as well as for the Pacific and Atlantic lineages (node B), could be biased because the implemented model assumes a constant and equal population size across all lineages. This assumption is almost certainly violated as some of the stickleback

lineages have undergone recent range expansions likely involving population size bottlenecks (McKinnon and Rundle, 2002). Nevertheless, our analyses confirm that the range expansion from which all sampled populations of *G. aculeatus* originate took place no earlier than ca. 1.25 mya. Under the assumption that the divergence between *G. aculeatus* and *G. nipponicus* took place 0.68 mya (Ravinet et al. 2018), the range expansion of *G. aculeatus* likely happened around 62.7-439.7 kya. This confirms the hypothesis put forth by Orti et al. (1994), and later corroborated by Fang et al. (2018), that extant Atlantic populations originate from a recent re-colonization event from the Pacific, and the Late Pliocene/Early Pleistocene Atlantic populations of *G. aculeatus* – for which there is fossil evidence (Bell and Foster, 1994; Foster, 1995) – had gone extinct before the Atlantic Ocean became re-colonized.

The two analytical approaches (concatenation versus MSC) independently produced comparable but non-identical TMRCA estimates, adding uncertainty to the results. As both methods have their specific shortcomings. As the two methods may bias age estimates in opposite directions when the model assumptions are violated, we argue that the application of both methods provides an opportunity to embrace the underlying uncertainties. Therefore, we suggest that in the absence of more realistic models for divergence time inference based on SNP data, analysis of directly comparable datasets with different models, each making different assumptions about the data, is the most reasonable approach to quantify the uncertainty in divergence time estimates.

Acknowledgments

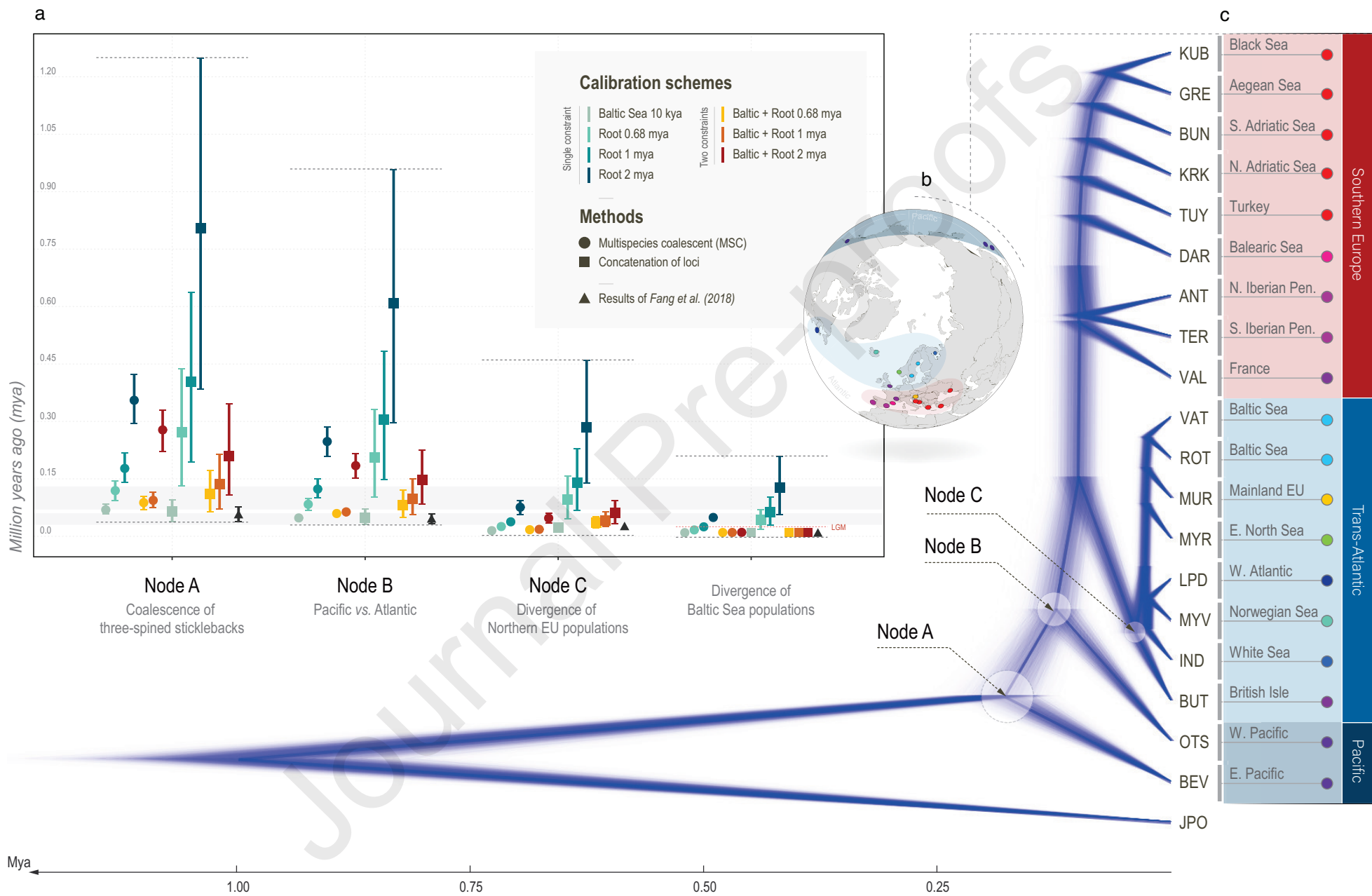
We thank two anonymous referees for helpful feedback on an earlier version of this manuscript. This study was supported by grants from the Chinese Scholarship Council (grant 201606270188 to B.F.), the Academy of Finland (grant 316294 to P.M.; 129662, 134728 and 218343 to J.M.), HiLife (grant 797011029 to J.M.) and the Norwegian Research Council (grant 275869 to M.M.).

References

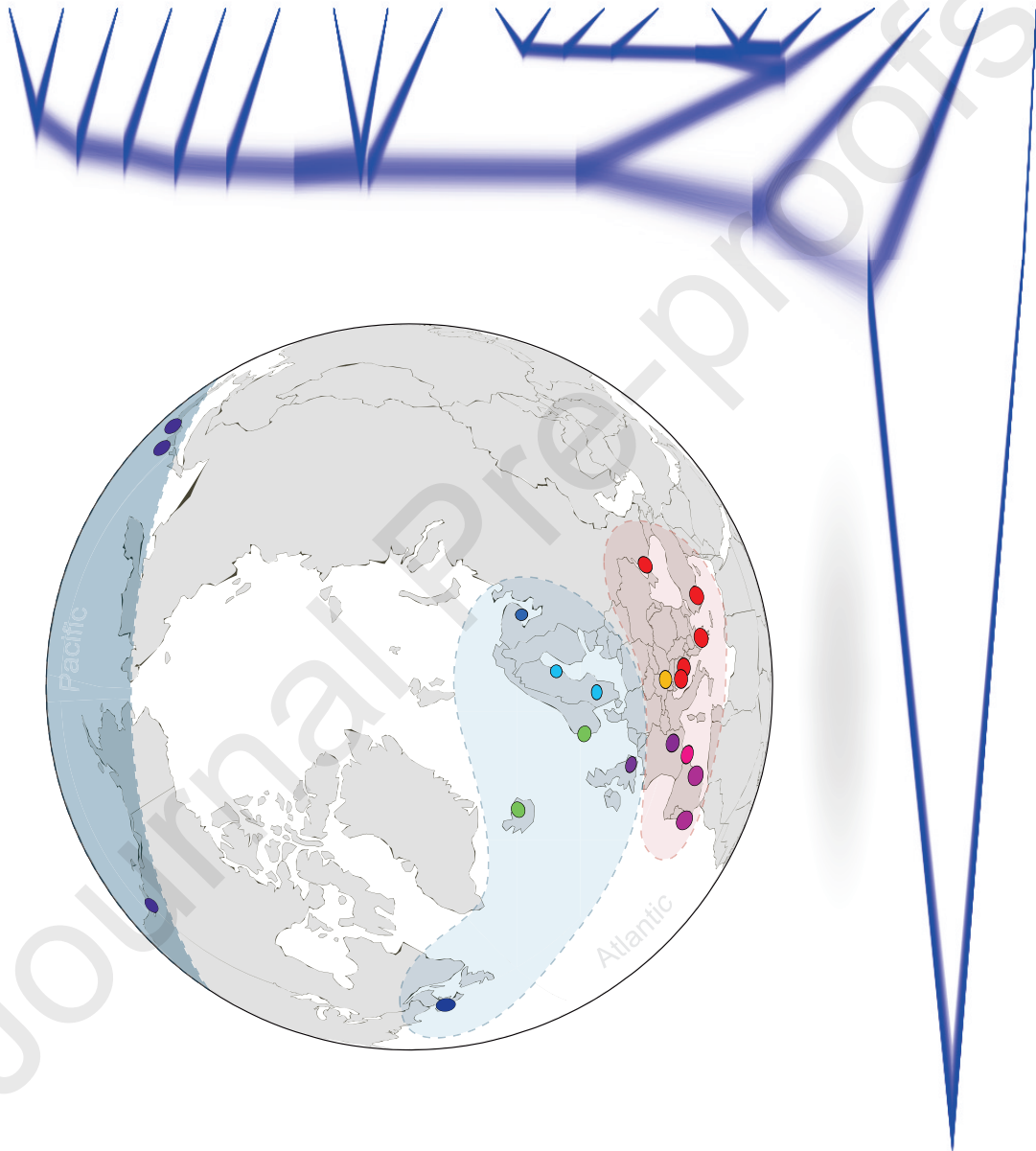
- Ballard, R.D., Coleman, D.F., Rosenberg, G., 2000. Further evidence of abrupt Holocene drowning of the Black Sea shelf. *Mar Geol* 170, 253-261.
- Bell, M.A., Foster, S.A., 1994. *The evolutionary biology of the threespine stickleback*. Oxford University Press.
- Bouckaert, R., Heled, J., Kühnert, D., Vaughan, T., Wu, C.-H., Xie, D., Suchard, M.A., Rambaut, A., Drummond, A.J., 2014. BEAST 2: a software platform for Bayesian evolutionary analysis. *PLoS Comp. Biol.* 10, e1003537.
- Bouckaert, R.R., 2010. DensiTree: making sense of sets of phylogenetic trees. *Bioinformatics* 26, 1372-1373.
- Bryant, D., Bouckaert, R., Felsenstein, J., Rosenberg, N.A., RoyChoudhury, A., 2012. Inferring species trees directly from biallelic genetic markers: bypassing gene trees in a full coalescent analysis. *Mol Biol Evol* 29, 1917-1932.
- Burridge, C.P., Craw, D., Fletcher, D., Waters, J.M., 2008. Geological dates and molecular rates: fish DNA sheds light on time dependency. *Mol Biol Evol* 25, 624-633.
- Clark, P.U., Dyke, A.S., Shakun, J.D., Carlson, A.E., Clark, J., Wohlfarth, B., Mitrovica, J.X., Hostetler, S.W., McCabe, A.M., 2009. The Last Glacial Maximum. *Science* 325, 710-714.
- Chifman, J., Kubatko, L., 2014. Quartet inference from SNP data under the coalescent model. *Bioinformatics* 30, 3317-3324.
- Drummond, A.J., Suchard, M.A., Xie, D., Rambaut, A., 2012. Bayesian phylogenetics with BEAUti and the BEAST 1.7. *Mol Biol Evol* 29, 1969-1973.
- Fang, B., Merila, J., Ribeiro, F., Alexandre, C.M., Momigliano, P., 2018. Worldwide phylogeny of three-spined sticklebacks. *Mol Phylogenet Evol* 127, 613-625.
- Foster, S.A., 1995. Understanding the evolution of behavior in threespine stickleback: The value of geographic variation. *Behaviour* 132, 1107-1129.
- Gökaşan, E., Demirbag, E., Oktay, F.Y., Ecevitog, B., Şimşek, M., Yüce, H., 1997. On the origin of the Bosphorus. *Mar Geol* 140, 183-199.
- Hipp, A.L., Eaton, D.A., Cavender-Bares, J., Fitzek, E., Nipper, R., Manos, P.S., 2014. A framework phylogeny of the American oak clade based on sequenced RAD data. *PLoS One* 9, e93975.
- Ho, S.Y., Lanfear, R., Bromham, L., Phillips, M.J., Soubrier, J., Rodrigo, A.G., Cooper, A., 2011. Time - dependent rates of molecular evolution. *Mol Ecol* 20, 3087-3101.
- Ho, S.Y., Phillips, M.J., Cooper, A., Drummond, A.J., 2005. Time dependency of molecular rate estimates and systematic overestimation of recent divergence times. *Mol Biol Evol* 22, 1561-1568.
- Kern, A.D., Hahn, M.W., 2018. The neutral theory in light of natural selection. *Mol Biol Evol* 35, 1366-1371.
- Leppakoski, E., Gollasch, S., Gruszka, P., Ojaveer, H., Olenin, S., Panov, V., 2002. The Baltic - a sea of invaders. *Can J Fish Aquat Sci* 59, 1175-1188.

- Maddison, W.P., Knowles, L.L., 2006. Inferring phylogeny despite incomplete lineage sorting. *Syst Biol* 55, 21-30.
- Matzke, N.J., 2013. BioGeoBEARS: BioGeography with Bayesian (and likelihood) evolutionary analysis in R Scripts. R package, version 0.2, p. 2013.
- McKinnon, J.S., Rundle, H.D., 2002. Speciation in nature: the threespine stickleback model systems. *Trends Ecol Evol* 17, 480-488.
- Mendes, F.K., Hahn, M.W., 2016. Gene tree discordance causes apparent substitution rate variation. *Syst Biol* 65, 711-721.
- Membrebe, J.V., Suchard, M.A., Rambaut, A., Baele, G., Lemey, P., 2019. Bayesian inference of evolutionary histories under time-dependent substitution rates. *Mol Biol Evol*, msz094.
- Nilsson, J., Gross, R., Asplund, T., Dove, O., Jansson, H., Kelloniemi, J., Kohlmann, K., Löytynoja, A., Nielsen, E.E., Paaver, T., 2001. Matrilinear phylogeography of Atlantic salmon (*Salmo salar L.*) in Europe and postglacial colonization of the Baltic Sea area. *Mol Ecol* 10, 89-102.
- Ogilvie, H.A., Bouckaert, R.R., Drummond, A.J., 2017. StarBEAST2 brings faster species tree inference and accurate estimates of substitution rates. *Mol Biol Evol* 34, 2101-2114.
- Orti, G., Bell, M.A., Reimchen, T.E., Meyer, A., 1994. Global survey of mitochondrial DNA sequences in the threespine stickleback: evidence for recent migrations. *Evolution* 48, 608-622.
- Paradis, E., Claude, J., Strimmer, K., 2004. APE: analyses of phylogenetics and evolution in R language. *Bioinformatics* 20, 289-290.
- Ravinet, M., Yoshida, K., Shigenobu, S., Toyoda, A., Fujiyama, A., Kitano, J., 2018. The genomic landscape at a late stage of stickleback speciation: High genomic divergence interspersed by small localized regions of introgression. *PLoS Genet* 14, e1007358.
- Ryan, W., Pitman, W., 2000. Noah's Flood: The new scientific discoveries about the event that changed history. Simon and Schuster.
- Stange, M., Sanchez-Villagra, M.R., Salzburger, W., Matschiner, M., 2018. Bayesian divergence-time estimation with genome-wide single-nucleotide polymorphism data of sea catfishes (*Ariidae*) supports Miocene closure of the Panamanian Isthmus. *Syst Biol* 67, 681-699.
- Stroeven, A.P., Hättestrand, C., Kleman, J., Heyman, J., Fabel, D., Fredin, O., Goodfellow, B.W., Harbor, J.M., Jansen, J.D., Olsen, L., Caffee, M.W., Fink, D., Lundqvist, J., Rosqvist, G.C., Strömberg, B., Jansson, K.N., 2016. Deglaciation of Fennoscandia. *Quart Sci Rev* 147, 91-121.
- Taylor, E.B., McPhail, J.D., 1999. Evolutionary history of an adaptive radiation in species pairs of threespine sticklebacks (*Gasterosteus*): insights from mitochondrial DNA. *Biol J Linn Soc* 66, 271-291.
- Taylor, E.B., McPhail, J.D., 2000. Historical contingency and ecological determinism interact to prime speciation in sticklebacks, *Gasterosteus*. *Proc Biol Sci B* 267, 2375-2384.
- Voipio, A., 1981. The Baltic Sea. Elsevier.

Figure 1. Estimates of divergence times among major three-spined stickleback clades. (a) Summary of divergence time estimates derived from the multispecies coalescent-based and concatenation-based methods. Seven sets of calibration schemes were applied in the two methods in parallel. Calibration points included three root calibrations (0.68 mya, 1 mya and 2 mya; the divergence time between *G. aculeatus* and the outgroup taxon *G. nipponicus*) and one geographic calibration (10 kya, TMRCA of Baltic Sea populations). Different calibration settings are marked with different colors. The gray-shaded regions denote periods of Bering Seaway existence, providing geographical reference relevant for the estimates of node B. Divergence time estimates are represented by mean ages (dots) and 95% highest posterior density (HPD) intervals (vertical lines). See statistical summary in Appendix Table 1. (b) Schematic globe showing the sampling locations. (c) SNAPP tree, as an example, inferred solely with the 1 mya root calibration point. The geographic regions of populations are given on the right, distinguished by colors corresponding to colored dots in (b).



Southern Europe Trans-Atlantic Pacific



Highlights

1. This study provides refined and robust divergence time estimates among major clades of three-spined sticklebacks based on state-of-art methods.
2. Results confirm that the extant Atlantic Ocean populations originate from a recent re-colonization event from the Pacific Ocean.
3. Both the updated calibration schemes and the application of the multispecies coalescent model impacted upon the earlier divergence time estimates.
4. The new divergence time estimates are more ancient than in the previous study for older nodes, whereas the estimates of younger nodes were not strongly affected by the re-analyses.
5. The study emphasizes the need of using multiple analytical frameworks (each one subject to different potential biases) and directly testing the effect of different calibration strategies to incorporate uncertainties in divergence time estimation.