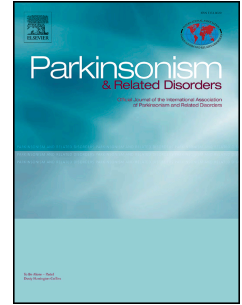


Journal Pre-proof

Impaired serine metabolism complements LRRK2-G2019S pathogenicity in PD patients

Sarah Louise Nickels, Jonas Walter, Silvia Bolognin, Deborah Gérard, Christian Jaeger, Xiaobing Qing, Johan Tisserand, Javier Jarazo, Kathrin Hemmer, Amy Harms, Rashi Halder, Philippe Lucarelli, Emanuel Berger, Paul M.A. Antony, Enrico Glaab, Thomas Hankemeier, Christine Klein, Thomas Sauter, Lasse Sinkkonen, Jens Christian Schwamborn



PII: S1353-8020(19)30395-5

DOI: <https://doi.org/10.1016/j.parkreldis.2019.09.018>

Reference: PRD 4162

To appear in: *Parkinsonism and Related Disorders*

Received Date: 14 June 2019

Revised Date: 14 August 2019

Accepted Date: 15 September 2019

Please cite this article as: Nickels SL, Walter J, Bolognin S, Gérard D, Jaeger C, Qing X, Tisserand J, Jarazo J, Hemmer K, Harms A, Halder R, Lucarelli P, Berger E, Antony PMA, Glaab E, Hankemeier T, Klein C, Sauter T, Sinkkonen L, Schwamborn JC, Impaired serine metabolism complements LRRK2-G2019S pathogenicity in PD patients, *Parkinsonism and Related Disorders* (2019), doi: <https://doi.org/10.1016/j.parkreldis.2019.09.018>.

This is a PDF file of an article that has undergone enhancements after acceptance, such as the addition of a cover page and metadata, and formatting for readability, but it is not yet the definitive version of record. This version will undergo additional copyediting, typesetting and review before it is published in its final form, but we are providing this version to give early visibility of the article. Please note that, during the production process, errors may be discovered which could affect the content, and all legal disclaimers that apply to the journal pertain.

© 2019 The Author(s). Published by Elsevier Ltd.

Impaired serine metabolism complements LRRK2-G2019S pathogenicity in PD patients

Sarah Louise Nickels^{1,2,5}, Jonas Walter¹, Silvia Bolognin¹, Deborah Gérard², Christian Jaeger¹, Xiaobing Qing¹, Johan Tisserand¹, Javier Jarazo¹, Kathrin Hemmer¹, Amy Harms³, Rashi Halder¹, Philippe Lucarelli¹, Emanuel Berger¹, Paul M.A. Antony¹, Enrico Glaab¹, Thomas Hankemeier³, Christine Klein⁴, Thomas Sauter², Lasse Sinkkonen², Jens Christian Schwamborn^{1,*}

¹Luxembourg Centre for Systems Biomedicine (LCSB), University of Luxembourg, L-4367 Belvaux, Luxembourg

²Life Sciences Research Unit (LSRU), Systems Biology Group, University of Luxembourg, L-4367 Belvaux, Luxembourg

³Leiden Academic Centre for Drug Research (LACDR), Analytical Biosciences, Leiden University, NL-2333 CC Leiden, Netherlands

⁴ Institute of Neurogenetics, University of Lübeck, D-23538 Lübeck, Germany

⁵ Integrated Biobank of Luxembourg (IBBL), Luxembourg Institute of Health, L-3555 Dudelange, Luxembourg

*Lead contact: Jens C. Schwamborn, Luxembourg Centre for Systems Biomedicine (LCSB), University of Luxembourg, 6, avenue du Swing, L-4367 Belvaux, Luxembourg; E-mail: jens.schwamborn@uni.lu

ABSTRACT

Parkinson's disease (PD) is a multifactorial disorder with complex etiology. The most prevalent PD associated mutation, LRRK2-G2019S is linked to familial and sporadic cases. Based on the multitude of genetic predispositions in PD and the incomplete penetrance of LRRK2-G2019S, we hypothesize that modifiers in the patients' genetic background act as susceptibility factors for developing PD. To assess LRRK2-G2019S modifiers, we used human induced pluripotent stem cell-derived neuroepithelial stem cells (NESCs). Isogenic controls distinguish between LRRK2-G2019S dependent and independent cellular phenotypes. LRRK2-G2019S patient and healthy mutagenized lines showed altered NESC self-renewal and viability, as well as impaired serine metabolism. In patient cells, phenotypes were only partly LRRK2-G2019S dependent, suggesting a significant contribution of the genetic background. In this context we identified the gene *serine racemase* (*SRR*) as a novel patient-specific, developmental, genetic modifier contributing to the aberrant phenotypes. Its enzymatic product, D-serine, rescued altered cellular phenotypes. Susceptibility factors in the genetic background, such as *SRR*, could be new targets for early PD diagnosis and treatment.

KEYWORDS

Parkinson's disease, LRRK2-G2019S, Neuroepithelial stem cells, Genetic background, Susceptibility factor, Serine racemase, second hit.

INTRODUCTION

Parkinson's disease (PD) is the second most common progressive neurodegenerative disease. Pathophysiologically, PD is characterized by the loss of midbrain dopaminergic neurons (DN) in the *substantia nigra*. The triggers that lead to the onset of PD and finally to DN degeneration are poorly understood and thus, PD pathogenesis remains largely elusive with no effective protective treatment. PD has been proposed to encompass different multifactorial diseases, with similar phenotypic outcome (1). Multiple genetic predispositions, monogenetic mutations, and risk loci can cause similar parkinsonian phenotypes and symptoms.

The most common mutation that causes autosomal dominant PD is a glycine to serine substitution at position 2019 (G2019S) in the leucine-rich-repeat-kinase-2 (LRRK2) (2,3). *LRRK2* is of special interest as its mutations are the monogenetic cause of familial PD and the reason for 1-2 % of the sporadic cases (4,5). Furthermore, a single nucleotide polymorphism (SNP) in the *LRRK2* gene acts as common risk modifier for developing PD (6). Epidemiologic studies suggest that the age of onset between individuals carrying LRRK2-G2019S is highly variable and that different ethnicities show higher prevalence's (7). Accordingly genetic variations within the patient-specific genetic background may underlie this variability. Such so-called second hits may explain why asymptomatic carriers exist, why the penetrance of LRRK2-G2019S is age-dependent and why the LRRK2 phenotypic spectrum is practically indistinguishable from that of idiopathic PD (iPD) (4).

Previous studies suggest that LRRK2 has an impact on neural stem cell (NSC) proliferation and integrity and plays a role in neurogenesis (8–12). Furthermore, *LRRK2* expression is enhanced in the stem cell niches of the developing mouse brain during neurogenesis (13). These observations imply a possible link between LRRK2, impaired neurogenesis, and the onset or progression of PD and therefore, we hypothesize that PD might have a neuro-developmental component that could explain DN vulnerability.

To explore this hypothesis, we investigated human PD patient-specific, iPSC-derived, neuroepithelial stem cells (NESC). To differentiate between LRRK2-G2019S dependent phenotypes and genetic background-specific changes, isogenic control lines were used (14). The identification of phenotypes in LRRK2-G2019S PD patient-specific NESCs allows to gain new insights into NSC deregulations in PD pathogenesis and development. Finally, analysing the patient genetic background enables to discover susceptibility factors that may control disease-related cellular phenotypes and predispose to PD. These novel genetic modifiers could potentially be used as biomarkers for early diagnosis or as personalized therapeutic targets for precision medicine.

RESULTS

Patient cell lines show impaired stem cell self-renewal and serine metabolism

To get an unbiased overview of the pathways that are affected in patients compared to healthy individuals, we assessed the transcriptome of the healthy (H) vs. patients (P) NESCs lines depicted in **Figure 1A**. Quality controls regarding characterisation, derivation, gene-editing and individual absolute values of hNESCs phenotypes can be found in the supplements. Microarray analysis was performed and 865 significantly differentially expressed genes (DEGs) were identified between the six healthy and the six patient derived cell lines (H-6 vs. P-5), $FDR \leq 0.05$ (15). Metacore pathway enrichment analysis revealed that the transcriptional regulation of amino acid metabolism, the cell cycle, cellular development as well as oxidative stress are within the top five networks enriched in the PD patients compared to healthy individuals (**Figure 1B**). We decided to focus the further analysis on the deregulated cell cycle and amino acid metabolism by assessing the corresponding phenotypes, such as metabolic activity, proliferation and cell death (**Figure 1C-F**). MTT assay derived growth curves revealed reduced cell viability or metabolic activity of the patient cell lines when compared to the healthy lines (H1-6 vs. P1-5) (**Figure 1C**). To link this decrease to lower proliferation rates and increased cell death, we stained for the mitosis marker phospho-histone H3 (PH3) (H1-6

vs. P1-5) and proliferation marker Ki67 (H1, H2, H6 vs P1, P2, P1.1). In the patient-derived lines, less cells were undergoing cell division as compared to healthy controls (**Figure 1D** and **S3E**). Moreover, immunostainings for cleaved caspase 3 (CC3) (H1-6 vs. P1-5) and for pyknotic nuclei (PYK) (H1-6 vs. P1-5), as well as flow cytometric counts for propidium iodide (H1-2&4-5 vs. P1-5) revealed increased cell death and apoptosis in patient-derived lines (**Figure 1E, 1F** and **S3E**).

Next, we used a metabolomics approach to investigate the intracellular levels of amino acids in the NESC cultures from healthy individuals and patients (H1-6 vs. P1-5) (**Figure 1G**). From all amino acids measured (H1-6 vs. P1-5), the L-serine increase in patients was the most promising candidate (**Figure 1H**). Interestingly, the most decreased amino acid was phospho-serine, the precursor metabolite of serine (**Figure 1G**), suggesting that serine metabolism is deregulated in LRRK2-G2019S patients. This hypothesis is further strengthened by the investigation of serine levels in the blood plasma of 25 healthy individuals, 25 iPD patients and 5 PD patients with the LRRK2-G2019S mutation (**Figure 1I**). (**Figure 1I**), suggesting that impaired serine metabolism is caused by LRRK2-G2019S. Furthermore, this observation supports the concept that findings from a PD patient-specific NSC model can be replicated in patients biofluids.

Stratification of LRRK2-G2019S dependent and independent phenotypes

Next, we investigated whether the phenotypes we observed in patient cells (**Figure 1**), were indeed caused by the LRRK2-G2019S mutation (**Figure 2**). For this purpose, we made use of the NESCs where the mutation had been introduced into the healthy background (H1, H3, H6.1 vs H1G2019S, H3G2019S, H6.1G2019S). We were able to detect phenotypes similar to the ones observed in patient lines, indicating that the LRRK2-G2019S mutation is sufficient to alter proliferation, cell death and metabolic activity (**Figure 2A and B**). Moreover, LRRK2-G2019S dependency of these phenotypes was highlighted by treatment with the LRRK2 inhibitor, CZC-25146, that was able to rescue the mutation-dependent increase in cell death and the decrease in mitosis (**Figure S4A**). We further

analyzed the serine levels upon the insertion of the mutation and could show that LRRK2-G2019S increases serine levels in hNESCs (**Figure 2C**). Furthermore, we also detected an increase in the serine levels in mice expressing human LRRK2-G2019S (**Figure 2D**). These observations, support the hypothesis that the observed serine deregulations are specific for the LRRK2-G2019S mutation.

Next, we gene-corrected the LRRK2-G2019S mutation in the patient cell lines (P1, P1.1, P2 vs P1GC, P1.1GC, P2GC). Indeed, correcting the mutation resulted in the rescue of previously published phenotypes (16), such as increased protein levels of alpha-Synuclein and TAU (**Figure S3A**). Strikingly, the correction of the mutation was, not able to rescue proliferation and survival phenotypes in patient-specific NESCs (**Figure 2E-G**). Moreover, concerning the serine levels only a partial rescue can be observed (**Figure 2H**). This observation suggests that in the patient-derived lines, the genetic background is contributing to the phenotypes. To get further insights into the origin of the observed phenotypes and to delineate their dependency on LRRK2-G2019S, we repeated the proliferation and cell death assays in the presence of the LRRK2 kinase inhibitor CZC-25146 (17). Previously, CZC-25146 was shown to rescue LRRK2-G2019S induced apoptosis in DNs (17). Within the PD patient-derived NESCs, increased cell death and decreased mitosis were not rescued by inhibiting LRRK2-kinase activity (**Figure 2I and 2J**). This observation suggests that other factors, which are independent of LRRK2-G2019S, strongly contribute to these phenotype . Moreover, inhibiting LRRK2 in the gene-corrected cells had as expected no effect (**Figure S4B**). These results emphasize the finding that the gene-correction of LRRK2-G2019S was not sufficient to rescue the phenotypes and highlight the important contribution of the genetic background.

Identification of potential susceptibility factors in the patient's genetic background

Based on the observation that cellular phenotypes partially depend on the information carried by the patient's genetic background, we aimed at identifying responsible genes. For this purpose, we

reanalysed the gene expression via whole transcriptome microarray profiling taking into account also the isogenic controls. Moreover to narrow down, which genes could act as possible genetic modifiers, we performed a stricter analysis using the eBayes method (18). The data confirmed that deregulation of the NESC transcriptome is strongly influenced by the patient's genetic background. The heatmap shows that patient cells cluster with their gene-corrected counterpart, suggesting a limited contribution of LRRK2-G2019S alone to the changes in gene expression (**Figure 3A**). To investigate which genes could act as possible susceptibility factors accounting for the patients' genetic background-dependent part of the phenotypes, we evaluated the DEGs from the Healthy vs. Patient comparison. The top 50 candidates are represented in a second heat map (**Figure 3B**). These top candidates include genes such as RAB32 and PTGR1 that have implications in LRRK2-G2019S induced PD pathogenesis (19) or were linked to the PD genetic background in DNs (20). To further emphasize the top candidate genes we performed a variable importance ranking based on the significance (**Figure 3C**). Interestingly, among the top five genes that were unique to the Healthy vs. Patient comparison we found 2 genes, *ARL17a*, *ARL17b*, in which SNPs have been linked to PD before (21) (**Figure 3D**). Other significant DEGs involved in pathways potentially relevant for PD, were serine racemase (*SRR*), neurotensin (*NTS*) and DLEU7 Antisense RNA 1 (*DLEU7-AS1*). The most promising candidates that may act as the here sought-after genetic modifiers were *SRR* and *NTS* because of their involvement in neuromodulation, -transmission and neurological diseases, such as PD (22,23).

Patient cell lines show impaired *SRR* expression, deregulated serine metabolism and the enzymatic product of *SRR*, D-serine, rescues patient phenotypes.

SRR is the enzyme that catalyzes the conversion between L-serine and D-serine (**Figure 4A**). Since serine metabolism was already affected by LRRK2-G2019S in hNESCs (**Figure 1 and 2**), we decided to

focus on SRR as a potential genetic modifier for LRRK2-G2019S induced PD. RT-qPCR for *SRR* mRNA validated the reduced expression in patient cell lines (H1-6 vs. P1-5) (**Figure 4B**). Consistent with the reduced SRR expression, the patient lines showed increased levels of L-serine compared to the healthy lines (H1-6 vs. P1-5) (**Figure 4A**). Therefore, we hypothesized that the reduced levels of SRR lead to increased levels of serine and a deficiency in the conversion to D-serine (**Figure 4A**). Based on the described function of D-serine in NSCs (24,25), the deficiency in D-serine production might contribute to the observed cellular phenotypes, and consequently, the effects may be rescued through treatment with D-serine. Indeed, treatment with 100 μ M D-serine led to the complete rescue of the proliferation and cell death phenotypes in PD patient-derived cells without affecting healthy lines (H1-6 vs P1-5) (**Figure 4C**). Strikingly, this rescue is specific for the NSC-related phenotypes. No rescue of the neuronal phenotypes (H1-6 vs. P1-5) was achievable through D-serine treatment (**Figure S5**). Furthermore, D-serine was rescuing LRRK2-G2019S dependent phenotypes in the three healthy lines where we inserted the mutation (**Figure S4C**). In addition, D-serine rescued proliferation and partially rescued apoptosis in the three patient lines where the mutation had been corrected (**Figure S4D**). These rescue effects highlight the contribution of impaired serine metabolism within the phenotypes and emphasizes the role of the LRRK2-G2019S mutation.

DISCUSSION

This study supports the concept that PD is not a monogenetic disease, a common interpretation of its diversity follows the multiple-hit hypothesis, which states that different incidences, or genetic predispositions may to act in parallel or consecutively to cause PD (26).

Our data suggests that both a decrease in *SRR* expression caused by the genetic background as well as an increase of serine levels caused by LRRK2-G2019S influence serine metabolism. In patients both deregulations, the reduction of SRR caused by the genetic background and the LRRK2-G2019S mutation, may complement each other (**Figure 4D**). Based on these results, we propose an interplay

between impaired serine metabolism, the PD genetic background and LRRK2-G2019S. However, we are aware that some of the here presented results are unexpected and have clear constraints, including the facts that the sample sizes is limited and that some of the observed phenotypes are rather subtle or have marginal statistical significance.

Initially, we thought that within patients LRRK2-G2019S alone leads to increased serine levels as observed in NESCs. Increased serine levels were, for instance, previously reported in the striatum of 6-OHDA lesioned rats (27) and serine inversely correlates with PD progression, suggesting that it might inhere a compensatory mechanism (28). This view, however, was challenged in our data by the discrepancy that gene-correcting LRRK2-G2019S within the patient genetic background did not rescue phenotypes, meaning that other susceptibility factors contribute to phenotype manifestation. A screen for potential genes that could act as genetic modifier and represent the driving force behind the phenotypes identified *SRR*, which is directly involved in serine metabolism. We showed that cell lines having the patient background have decreased *SRR* expression, which is in accordance with existing transcriptomic data from the *substantia nigra* of PD patients (29). Accordingly it seems more likely that two independent pathways exist that both affect serine metabolism and might act together under disease conditions. Mouse studies showed for instance similar phenotypes in *SRR*-KO and LRRK2-G2019S mice, suggesting that LRRK2-G2019S and *SRR* might have opposing modulating capacities (8,30). The mechanism on how LRRK2-G2019S deregulates serine levels, however, remains an open question and the possibility of a direct interaction between both proteins cannot be excluded (Figure 4d).

In regards to our hypothesis that PD may have a developmental component, patient NESCs show significant alterations in cell death and proliferation, which are both indicators of functionally relevant developmental impairments and could have significant consequences for *in vivo* neurogenesis. LRRK2 indeed is necessary for maintaining the balance between self-renewal and cell death in NESCs. Moreover, pathway analysis confirmed that developmental genes, independent of

LRRK2-G2019S, are altered between healthy and patient cell lines demonstrating that both LRRK2-G2019S and the patient genetic background can influence organism development in the context of PD.

Lastly, the deregulated serine metabolism by LRRK2-G2019S and decreased SRR expression levels consolidated the use of D-serine as potential rescue strategy. Moreover, a pilot study described that D-serine treatment alleviates behavioural and motor symptoms in PD (31). The fact that LRRK2 alone is not responsible for the investigated impairments, could have implications on PD therapeutic strategies in LRRK2-G2019S carriers. SRR, and L/D-serine could serve as new therapeutic targets for complementary treatment of early stage PD or may be used as potential blood biomarkers for diagnosis, stratification and preventive strategies. Finally, the results presented here might help to explain the incomplete penetrance and the variable age of onset and progression of LRRK2-G2019S carriers.

ACKNOWLEDGMENTS

The JCS lab is supported by the Fonds National de la Recherche (FNR) (CORE, C13/BM/5791363). JW, DG, JJ, and XQ are supported by fellowships from the FNR (AFR, Aides à la Formation-Recherche) and SN had a doctoral school position from the Doctoral School in Systems and Molecular Biomedicine of University of Luxembourg. This is an EU Joint Programme - Neurodegenerative Disease Research (JPND) project (INTER/JPND/14/02; INTER/JPND/15/11092422). Further support comes from the SysMedPD project which has received funding from the European Union's Horizon 2020 research and innovation programme under grant agreement No 668738. We thank Xiangyi Dong for her assistance in the laboratory. CK is supported by the DFG through FOR2488 (P1). We thank the Wellcome Trust Sanger institute, its funders, collaborators and Life Tech limited for supporting us with cell lines. We thank Prof. Dr. Thomas Gasser from the Universitätsklinikum Tübingen, Prof. Dr. Hans R. Schöler from the Max-Planck-Gesellschaft and Dr. Jared Sternecker from the CRTD for

providing us with cell lines. We thank the NINDS repository for providing cell lines. Microarrays were performed with EMBL GeneCore genomics core facility. We thank Aurélien Ginolhac for the preliminary microarray analysis. Bioinformatics analyses presented in this paper were carried out in part using the HPC facilities of the University of Luxembourg (see <http://hpc.uni.lu>). Amino acid measurements were performed at the LACDR, Analytical Biosciences, Leiden University. EG acknowledges support by the Fonds Nationale de la Recherche (FNR) through the National Centre of Excellence in Research (NCER) on Parkinson's disease (I1R-BIC-PFN-15NCER) and as part of the project MitoPD, under the auspices of the bilateral e:Med program by the German Federal Ministry of Education and Research and the FNR (INTER/BMBF/13/04).

EXPERIMENTAL PROCEDURES

Detailed experimental procedures are described in the supplements that can be found online. NESCs were generated from iPSCs, gene edited and cultivated as described by Qing et al., 2017 and Reinhardt et al., 2013. Antibodies and reagents for immunocytochemistry can be found in Table 1. Confocal images were preprocessed with Zeiss and analysed using image J. MTT was performed using the manufacturer's protocol (Sigma). Flow cytometry is described in Walter et al., 2019. RT-qPCR was done using Taqman probes (Table 1). Metabolite blood and mouse extractions are described in Jäger et al., 2016 and cellular metabolites have been analysed by the University of Leiden. Mice were purchased from Jackson Lab Stock# 012467 derived from the WT funder line C5713467. Chemical reagents and treatments can be found in Table 1. RNA was extracted using miRNA easy kit. Samples were processed with EMBL Genomics Core Facility using Affymetrix Human Gene 2.0 arrays. GEO accession number GSE101534.

REFERENCES

1. Dick FD, De Palma G, Ahmadi a, Scott NW, Prescott GJ, Bennett J, et al. Environmental risk factors for Parkinson's disease and parkinsonism: the Geoparkinson study. *Occup Environ Med* [Internet]. 2007 Oct [cited 2014 Jan 29];64(10):666–72. Available from: <http://www.pubmedcentral.nih.gov/articlerender.fcgi?artid=2078401&tool=pmcentrez&rendertype=abstract>
2. Zimprich A, Biskup S, Leitner P, Lichtner P, Farrer M, Lincoln S, et al. Mutations in LRRK2 cause autosomal-dominant parkinsonism with pleomorphic pathology. *Neuron*. 2004;44(4):601–7.
3. Paisán-Ruiz C, Jain S, Evans EW, Gilks WP, Simón J, Van Der Brug M, et al. Cloning of the gene containing mutations that cause PARK8-linked Parkinson's disease. *Neuron*. 2004;44(4):595–600.
4. Healy DG, Falchi M, O'Sullivan SS, Bonifati V, Durr A, Bressman S, et al. Phenotype, genotype, and worldwide genetic penetrance of LRRK2-associated Parkinson's disease: a case-control study. *Lancet Neurol*. 2008;7(7):583–90.
5. Berg D, Schweitzer KJ, Leitner, P E Al. Type and frequency of mutations in the LRRK2 gene in familial and sporadic Parkinson's disease*. *Brain*. 2005;128:3000–11.
6. Nalls MA, Saad M, Noyce AJ, Keller MF, Schrag A, Bestwick JP, et al. Genetic comorbidities in parkinson's disease. *Hum Mol Genet*. 2014;23(3):831–41.
7. Hentati F, Trinh J, Thompson C, Nosova E, Farrer MJ, Aasly JO. LRRK2 parkinsonism in Tunisia and Norway: A comparative analysis of disease penetrance. *Neurology*. 2014;83(6):568–9.
8. Winner B, Melrose HL, Zhao C, Hinkle KM, Yue M, Kent C, et al. Adult neurogenesis and neurite outgrowth are impaired in LRRK2 G2019S mice. *Neurobiol Dis* [Internet]. 2011 Mar [cited 2013 Oct 31];41(3):706–16. Available from: <http://www.pubmedcentral.nih.gov/articlerender.fcgi?artid=3059106&tool=pmcentrez&rendertype=abstract>
9. Bahnassawy L, Nicklas S, Palm T, Menzl I, Birzele F, Gillardon F, et al. The parkinson's disease-associated LRRK2 mutation R1441G inhibits neuronal differentiation of neural stem cells. *Stem Cells Dev* [Internet]. 2013;22(18):2487–96. Available from: <http://www.ncbi.nlm.nih.gov/pubmed/23600457>
10. Gonzalez-cano L, Menzl I, Tisserand J, Nicklas S, Jens C. Parkinson ' s disease associated mutant LRRK2 mediated inhibition of miRNA activity is antagonized by TRIM32 .
11. Liu G-H, Qu J, Suzuki K, Nivet E, Li M, Montserrat N, et al. Progressive degeneration of human neural stem cells caused by pathogenic LRRK2. *Nature* [Internet]. 2012 Nov 22 [cited 2014 Mar 23];491(7425):603–7. Available from: <http://www.pubmedcentral.nih.gov/articlerender.fcgi?artid=3504651&tool=pmcentrez&rendertype=abstract>
12. Milosevic J, Schwarz SC, Ogunlade V, Meyer AK, Storch A, Schwarz J. Emerging role of LRRK2 in human neural progenitor cell cycle progression, survival and differentiation. *Mol Neurodegener*. 2009;4:25.
13. Zechel S, Meinhardt A, Unsicker K, von Bohlen und Halbach O. Expression of leucine-rich-repeat-kinase 2 (LRRK2) during embryonic development. *Int J Dev Neurosci* [Internet]. 2010;28(5):391–9. Available from: <http://dx.doi.org/10.1016/j.ijdevneu.2010.04.002>
14. Soldner F, Laganière J, Cheng AW, Hockemeyer D, Gao Q, Alagappan R, et al. Generation of

- Isogenic Pluripotent Stem Cells Differing Exclusively at Two Early Onset Parkinson Point Mutations. *Cell* [Internet]. 2011;146(2):318–31. Available from: <http://linkinghub.elsevier.com/retrieve/pii/S0092867411006611>
15. Breitling R, Armengaud P, Amtmann A, Herzyk P. Rank products: A simple, yet powerful, new method to detect differentially regulated genes in replicated microarray experiments. *FEBS Lett*. 2004;573(1–3):83–92.
 16. Reinhardt P, Schmid B, Burbulla LF, Schöndorf DC, Wagner L, Glatza M, et al. Genetic correction of a LRRK2 mutation in human iPSCs links parkinsonian neurodegeneration to ERK-dependent changes in gene expression. *Cell Stem Cell* [Internet]. 2013 Mar 7 [cited 2013 Oct 31];12(3):354–67. Available from: <http://www.ncbi.nlm.nih.gov/pubmed/23472874>
 17. Ramsden N, Perrin J, Ren Z, Lee BD, Zinn N, Dawson VL, Tam D, Bova M, Lang M, Drewes G, Bantscheff M, Bard F, Dawson TM HC. Chemoproteomics-based design of potent LRRK2-selective lead compounds that attenuate Parkinson's disease-related toxicity in human neurons. *ACS Chem Biol*. 2011;6(10):1021–8.
 18. Smyth GK. Linear Models and Empirical Bayes Methods for Assessing Differential Expression in Microarray Experiments [Internet]. Vol. 3, Statistical Applications in Genetics and Molecular Biology. 2004. p. 1. Available from: <file://www.degruyter.com/view/j/sagmb.2004.3.issue-1/sagmb.2004.3.1.1027/sagmb.2004.3.1.1027.xml>
 19. Waschbüsch D, Michels H, Strassheim S, Ossendorf E, Kessler D, Gloeckner CJ, et al. LRRK2 transport is regulated by its novel interacting partner Rab32. *PLoS One*. 2014;9(10).
 20. Momcilovic O, Sivapatham R, Oron TR, Meyer M, Mooney S, Rao MS, et al. Derivation, characterization, and neural differentiation of integration-free induced pluripotent stem cell lines from Parkinson's disease patients carrying SNCA, LRRK2, PARK2, and GBA mutations. *PLoS One*. 2016;11(5):1–26.
 21. Allen M, Burgess JD, Ballard T, Serie D, Wang X, Younkin CS, et al. Gene expression, methylation and neuropathology correlations at progressive supranuclear palsy risk loci. *Acta Neuropathol*. 2016;132(2):1–15.
 22. Sasabe J, Chiba T, Yamada M, Okamoto K, Nishimoto I, Matsuoka M, et al. D-serine is a key determinant of glutamate toxicity in amyotrophic lateral sclerosis. *EMBO J* [Internet]. 2007;26(18):4149–59. Available from: <http://emboj.embopress.org/content/26/18/4149.abstract>
 23. St.-Gelais F, Jomphe C, Trudeau LÉ. The role of neurotensin in central nervous system pathophysiology: What is the evidence? *J Psychiatry Neurosci*. 2006;31(4):229–45.
 24. Canu N, Ciotti MT, Pollegioni L. Serine racemase: A key player in apoptosis and necrosis. *Front Synaptic Neurosci*. 2014;6(APR):1–15.
 25. Huang X, Kong H, Tang M, Lu M, Ding J-H, Hu G. D-Serine regulates proliferation and neuronal differentiation of neural stem cells from postnatal mouse forebrain. *CNS Neurosci Ther* [Internet]. 2012;18(1):4–13. Available from: <http://www.ncbi.nlm.nih.gov/pubmed/22280157>
 26. Sulzer D. Multiple hit hypotheses for dopamine neuron loss in Parkinson's disease. *Trends Neurosci*. 2007;30(5):244–50.
 27. El Arfani A, Albertini G, Bentea E, Demuyser T, Van Eeckhaut A, Smolders I, et al. Alterations in the motor cortical and striatal glutamatergic system and d-serine levels in the bilateral 6-hydroxydopamine rat model for Parkinson's disease. *Neurochem Int* [Internet]. 2015;88:88–96. Available from: <http://www.sciencedirect.com/science/article/pii/S0197018615300073>

28. Lewitt PA, Li J, Lu M, Guo L, Auinger P. Metabolomic biomarkers as strong correlates of Parkinson disease progression. *Neurology*. 2017;88(9):862–9.
29. Glaab E, Schneider R. Comparative pathway and network analysis of brain transcriptome changes during adult aging and in Parkinson’s disease. *Neurobiol Dis* [Internet]. 2015;74(2015):1–13. Available from: <http://dx.doi.org/10.1016/j.nbd.2014.11.002>
30. Balu DT, Li Y, Puhl MD, Benneyworth MA, Basu AC, Takagi S, et al. Multiple risk pathways for schizophrenia converge in serine racemase knockout mice, a mouse model of NMDA receptor hypofunction. *Proc Natl Acad Sci U S A* [Internet]. 2013;110(26):E2400-9. Available from: <http://www.pnas.org/content/110/26/E2400%5Cnhttp://www.pubmedcentral.nih.gov/articlerender.fcgi?artid=3696825&tool=pmcentrez&rendertype=abstract>
31. Gelfin E, Kaufman Y, Korn-Lubetzki I, Bloch B, Kremer I, Javitt DC, et al. D-serine adjuvant treatment alleviates behavioural and motor symptoms in Parkinson’s disease. *Int J Neuropsychopharmacol*. 2011;(2012):1–7.

FIGURE LEGENDS

Figure 1. Patient cell lines show impaired stem cell renewal and serine metabolism compared to healthy hNESCs

(A) Summary of cell lines: patients (P) healthy donors (H), insertion of LRRK2-G2019S (HG2019S) or gene correction (PGC).

(B) Metacore pathway enrichment analysis for H1-6 vs. P1-5, based on 865 DEGs (RankProduct).

(C) Growth curve of hNESCs by MTT at day 1, 3 and 6. Data as Mean \pm SEM. * $p \leq 0.05$, 2-way ANOVA. Sidak's multiple comparison * $p < 0.05$ at day 6. N=6 (H1-6 vs. P1-5), n=5.

(D) Representative images of phenotypes. P hNESCs show decreased mitosis (pH3) and proliferation (Ki67). Quantifications as Mean \pm SEM. * $p \leq 0.05$, t-test, GRUBB's test $\alpha = 0.1$, no outlier, N=6 (H1-6 vs. P1-5), n=3. For Ki67 N=3 (H1-2, H6 vs. P1-2), n=3. See Figure S3F for individual values.

(E) Propidium Iodide positive cell count after flow cytometry. Mean \pm SEM. * $p \leq 0.05$, t-test, GRUBB's test $\alpha = 0.1$, 1 outlier, N=5/6 (H1-2, H4-6 vs. P1-5) n=3.

(F) Representative images of phenotypes. P hNESCs show increased pyknosis (white stars) and apoptosis (CC3). Average percentages of positive cells \pm SEM. * $p \leq 0.05$, t-test, GRUBB's test $\alpha = 0.1$, no outlier for CC3, 1 outlier in H and P for PYK. N=6 (H1-6 vs. P1-5), n=3. See Figure S3F for individual values.

(G) Intracellular amino acid metabolite levels of hNESCs show increased serine levels in P. Data is shown as logFC, Mean \pm SEM.

(H) Serine metabolite levels in P vs. H individuals. Data is shown as Mean \pm SEM $p \leq 0.053$, t-test. GRUBB's test within 3 technical and 3 biological replicates per line $\alpha = 0.1$. 1 outlier in H2, H3, H5 and P5. N=6 (H1-6 vs. P1-5), n=3. See also Figure S3B for individual values.

(I) Serine blood plasma levels are increased in in P vs. H and in P vs. iPD cases. Mean \pm SEM. * $p \leq 0.05$, t-test, GRUBB's test $\alpha = 0.1$, no outliers. 1-way ANOVA $p = 0.0555$.

Figure 2. LRRK2-G2019S is sufficient to increase cell death, and serine metabolism and to decrease proliferation and metabolic activity. However within patients, LRRK2-G2019S is not necessary to maintain phenotypes.

(A) Representative images of HG2019S hNESCs. Introduction of LRRK2-G2019S in H cell lines increases pyknosis (Hoechst) and apoptosis (CC3) and reduces mitosis (PH3). Average percentage of positive cells \pm SEM. * $p \leq 0.05$, ** $p \leq 0.01$, *** $p \leq 0.001$, paired t-test, GRUBB's test $\alpha = 0.1$, no outliers. N=3 (H1,H3,H6 vs. H1G2019S, H3G2019S, H6G2019S), n=3.

(B) Growth curve of hNESCs by MTT after 1, 3 and 6 days. Mean \pm SEM. 2-way ANOVA followed by Sidak's multiple comparison * $p < 0.05$ at day 6. N=2 (H1, H3 vs. H1G2019S, H3G2019S), n=5.

(C) Serine levels are increased in HG2019S vs. H individuals. Mean \pm SEM. ** $p \leq 0.001$, t-test, GRUBB's test $\alpha = 0.1$, 1 outlier in H2, H3 and H5. N=2/6 (H1G2019S, H3G2019S vs. H1-6), n=3

(D) Serine level in striatum of LRRK2-G201S carrying mice is increased compared to WT mice from the same strain. Mean \pm SEM. * $p \leq 0.05$, t-test, GRUBB's test $\alpha = 0.1$, 1 outlier in WT and G2019S. N=7/5.

(E) Growth curve of hNESCs by MTT after 1, 3 and 6 days. Mean \pm SEM. * $p < 0.05$, 2-way ANOVA followed by Sidak's multiple comparison. N=3 (P1-2 vs. P1-2GC), n=5.

(F) Representative images of PGC hNESCs. Gene correction is not rescuing reduced mitosis (PH3) and increased pyknosis (Hoechst) and apoptosis (CC3).

(G) Quantification of B. Percentages as Mean \pm SEM. * $p \leq 0.05$, paired t-test, GRUBB's test $\alpha = 0.1$, 1 outlier for PYK (P). N=3 (P1-2 vs. P1-2GC), n=3.

(H) Serine levels are not significantly decreased by gene-correcting LRRK2-G2019S in patient lines. Mean \pm SEM, * $p \leq 0.053$, t-test, GRUBB's test $\alpha = 0.1$, 1 outlier in P5 and P2GC. N=3 (P1-5 vs. P1-2GC), n=3.

(I) Representative images of hNESCs stained for Hoechst, PH3 and CC3 after treatment with 0.5 μ M LRRK2 Inhibitor CZC-25146 in DMSO.

(J) Quantification of **D**. Inhibition of LRRK2-G2019S is not rescuing reduced mitosis or cell death in patient lines. Data as Mean \pm SEM. * $p \leq 0.05$, ** $p \leq 0.01$, *** $p \leq 0.001$, t-test, GRUBB's test $\alpha = 0.1$, 1 outlier in Pdms0 and PLRRK2in for CC3 and PYK and Hdms0 for PH3, N=6 (H1-6 vs. P1-5), n=3.

Figure 3. Identification of genes deregulated in LRRK2-G2019S carriers that might act as susceptibility factors within the patient genetic background to contribute to the observed phenotypes.

(A) Heatmap showing clustering of the cell lines for the top 50 DEGs between H and P using the eBayes method, FDR ≤ 0.05 .

(B) Heatmap of top 50 DEGs between H vs. P comparison, eBayes differential expression analysis, FDR ≤ 0.05 . N=6, n=3.

(C) DEGs ranked by significance to identify the top candidates.

(D) Top five DEGs between H and P are background dependent, * $p < 0.05$ t-test, *FDR < 0.05 . Each dot represents one cell line. For H vs. P N=6 (H1-6 vs. P1-5), n=3. For PGC N=3 (P1-2GC), n=3. For HG2019S N=2 (H1G2019S, H3G2019S), n=3.

Figure 4. SRR might contribute to deregulated serine metabolism, and D-serine the metabolic product of SRR rescues phenotypes in patients.

(A) Validation of *SRR* expression by RT-qPCR. The H lines were set to 1. Mean \pm SEM. * $p \leq 0.05$, t-test. N=6 (H1-6 vs. P1-5), n=3

(B) SRR converts L-serine to D-serine and is downregulated in the patient genetic background.

(C) Representative images of hNESCs stained with Hoechst, PH3 and CC3 after treatment with 100 μ M D-serine for 6 days. Quantification: D-serine rescues cell death and mitosis in patient cell lines; Mean \pm SEM. * $p < 0.05$, t-test, GRUBB's test $\alpha = 0.1$, 1 outlier in Pser for PH3 and in Hser for CC3. N=6 (H1-6 vs. P1-5), n=3.

(D) SRR acts as genetic modifier for LRRK2-G2019S induced PD. Overview showing the synthesis of previous Figures.

Journal Pre-proof

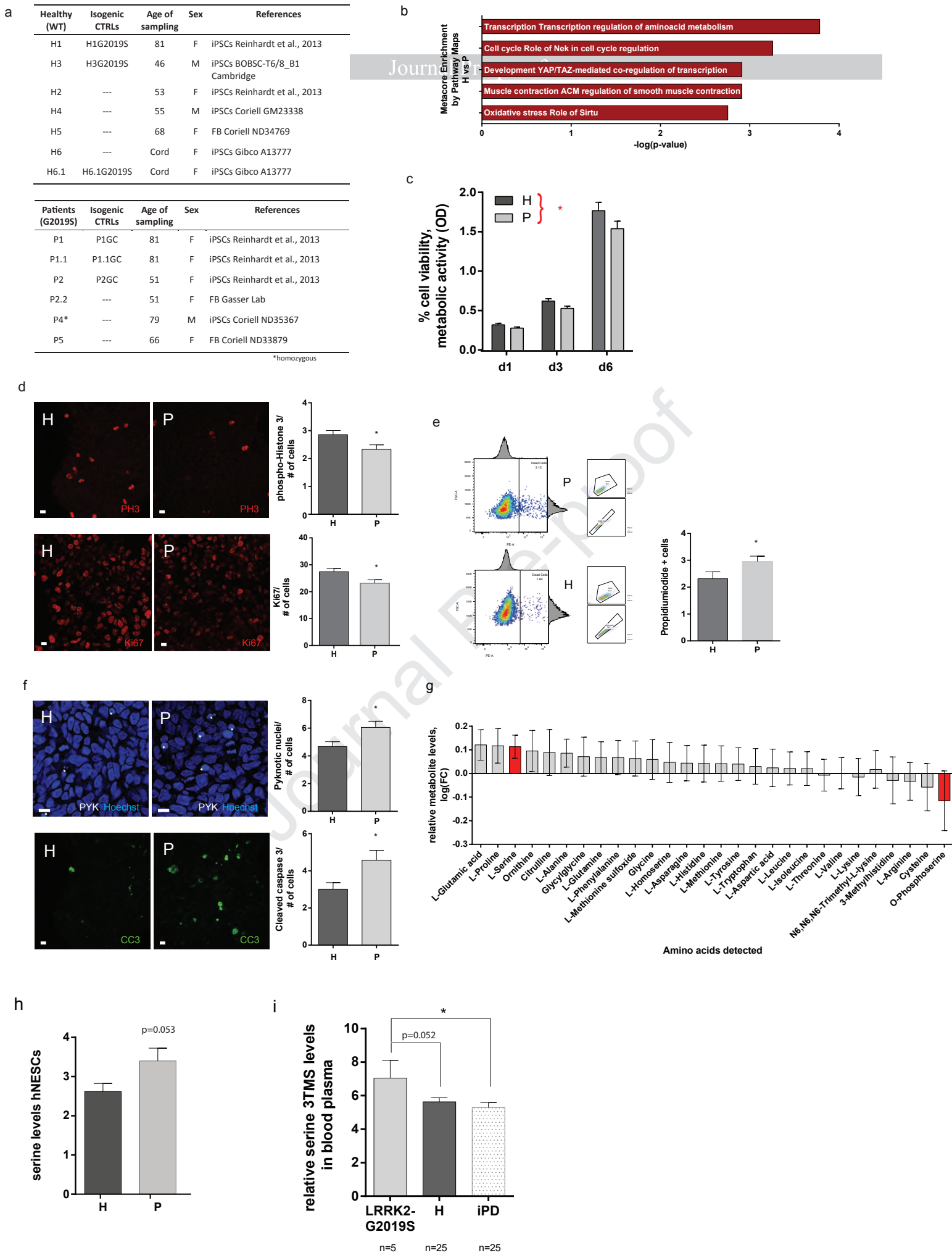


Figure 1 Phenotypes

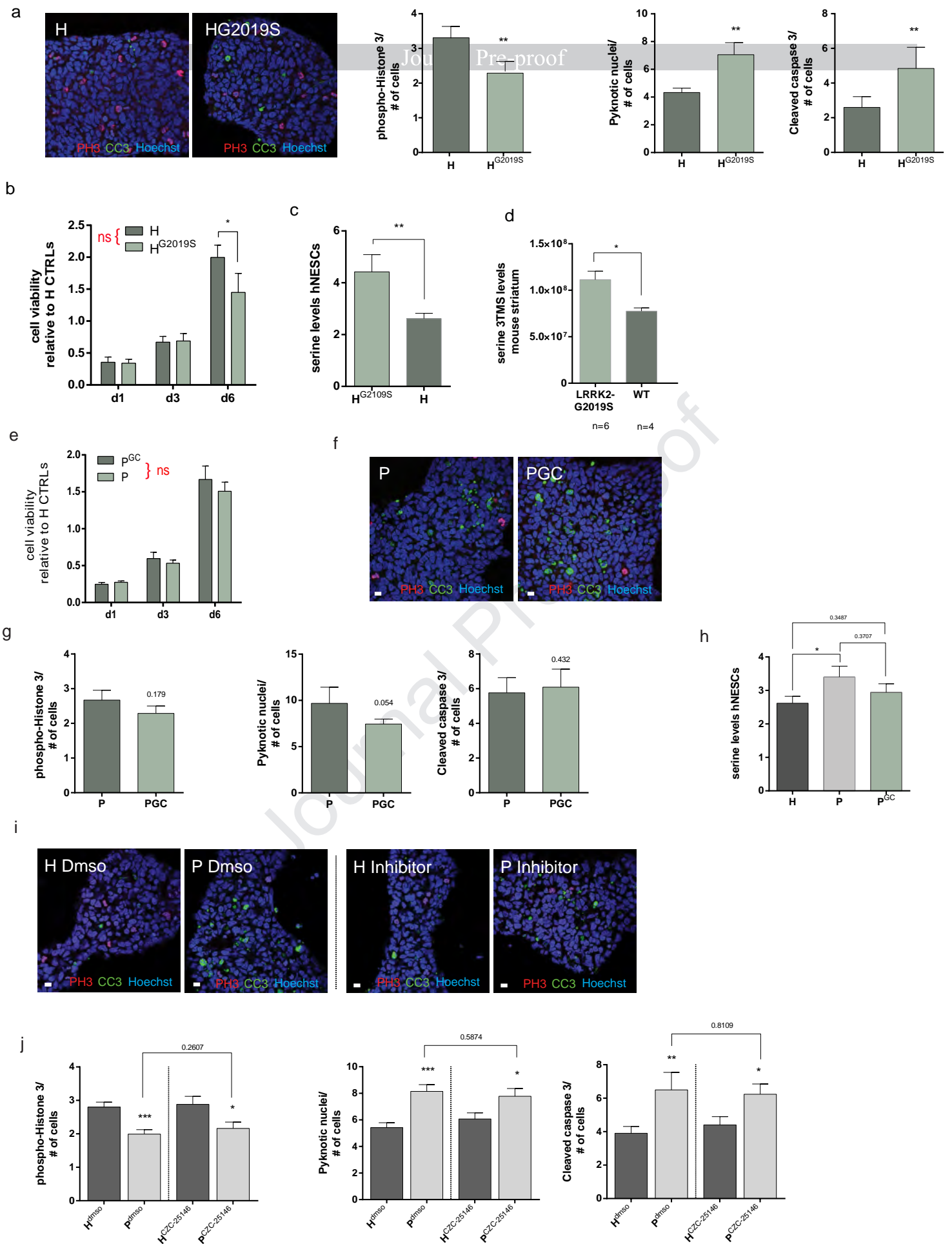


Figure 2 Insertion of LRRK2-G2019S into healthy lines is sufficient to cause phenotypes but within patients LRRK2-G2019S is not necessary to maintain phenotypes

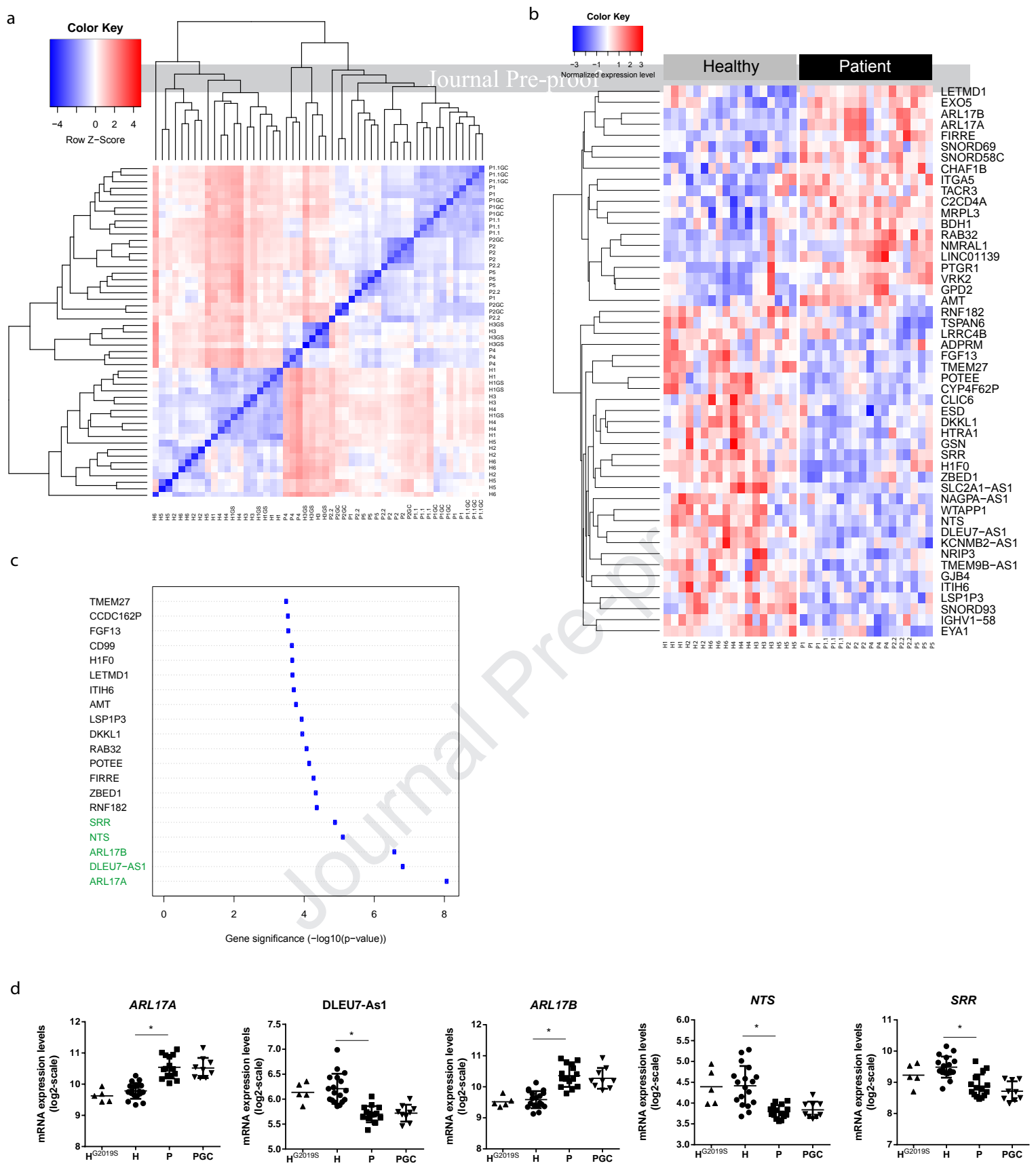


Figure 3 Susceptibility factors

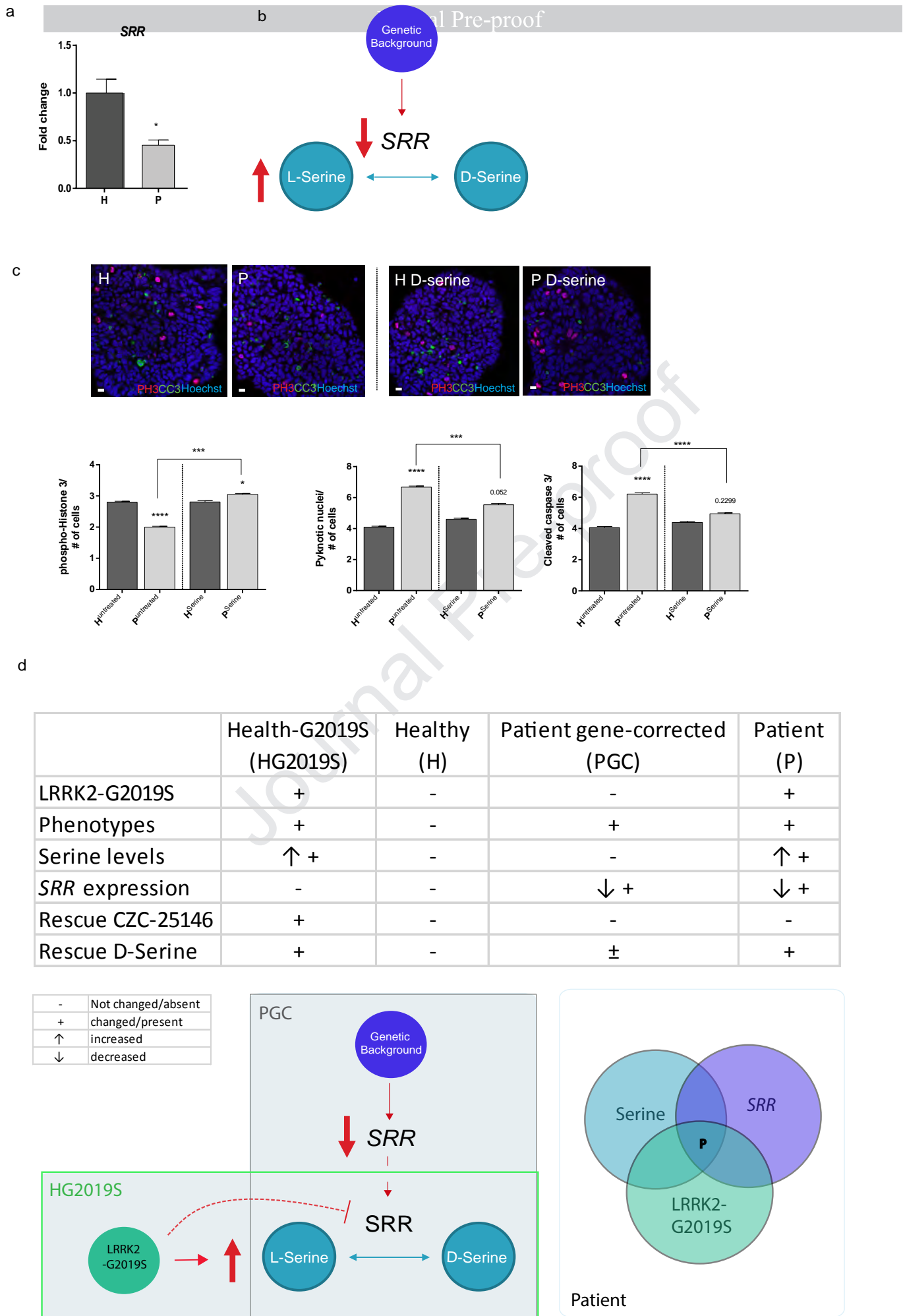


Figure 4 D-serine rescues phenotypes as SRR might act as susceptibility factor within the patient background

HIGHLIGHTS

- Stem cells from LRRK2-G2019S patients show impaired self-renewal, viability, and serine metabolism.
- Patient phenotypes only partly depend on LRRK2-G2019S, the PD genetic background contributes.
- Identification of *SRR* as a possible susceptibility factor within the PD genetic background.
- The enzymatic product of SRR, D-serine rescues background related phenotypes within PD patient cells.