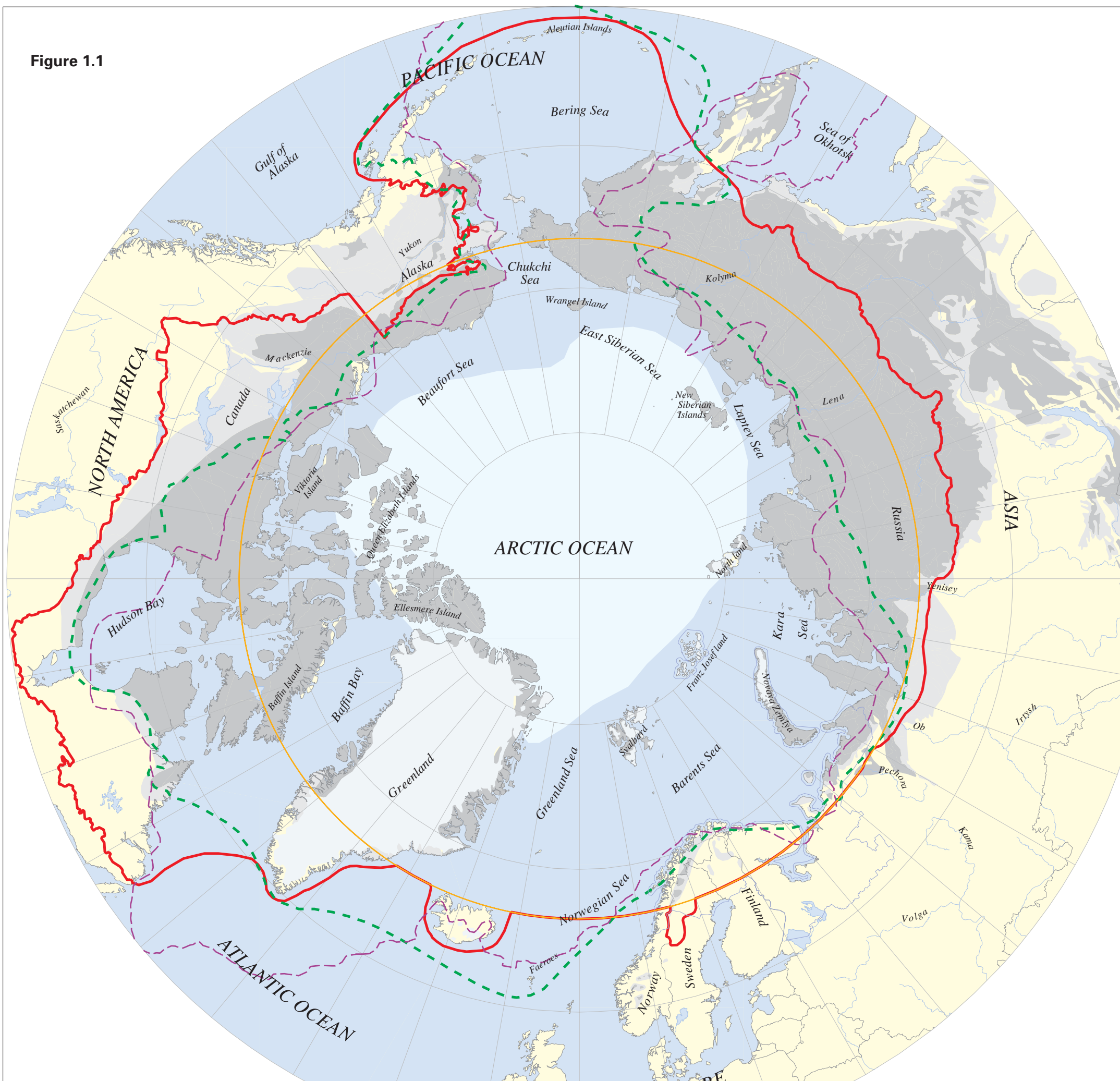

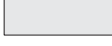







Figure 1.1



The Arctic Region

-  Continuous permafrost
-  Discontinuous permafrost
-  10°C - July isotherm
-  Phytogeographic Arctic boundary
-  Arctic Circle (Latitude: 66° 33' North)
-  Southern limit of Arctic data as provided by CAFF member countries
-  Outline of The Euro-Arctic Barents Region

Source data supplied by CAFF member countries:



Compilation and map production by:



Disclaimer:
 Neither the delineation of boundaries nor the use of any name in the publication implies an expression of opinion on the part of UNEP concerning the legal status of any country or territory, or of its authorities, or concerning the delimitation of the frontiers of any country or territory.
 Projection: Lambert-Azimuthal Equal Area. UNEP/GRID-Arendal March 1996.